

Data Path : Z:\voasrv\HPCHEM1\MSVOA\_D\Data\VD091923\  
 Data File : VD077149.D  
 Acq On : 19 Sep 2023 16:32  
 Operator : JC/SY  
 Sample : 04443-01  
 Misc : 5.05G/5.0ml/MSVOA\_D/SOIL  
 ALS Vial : 9 Sample Multiplier: 1

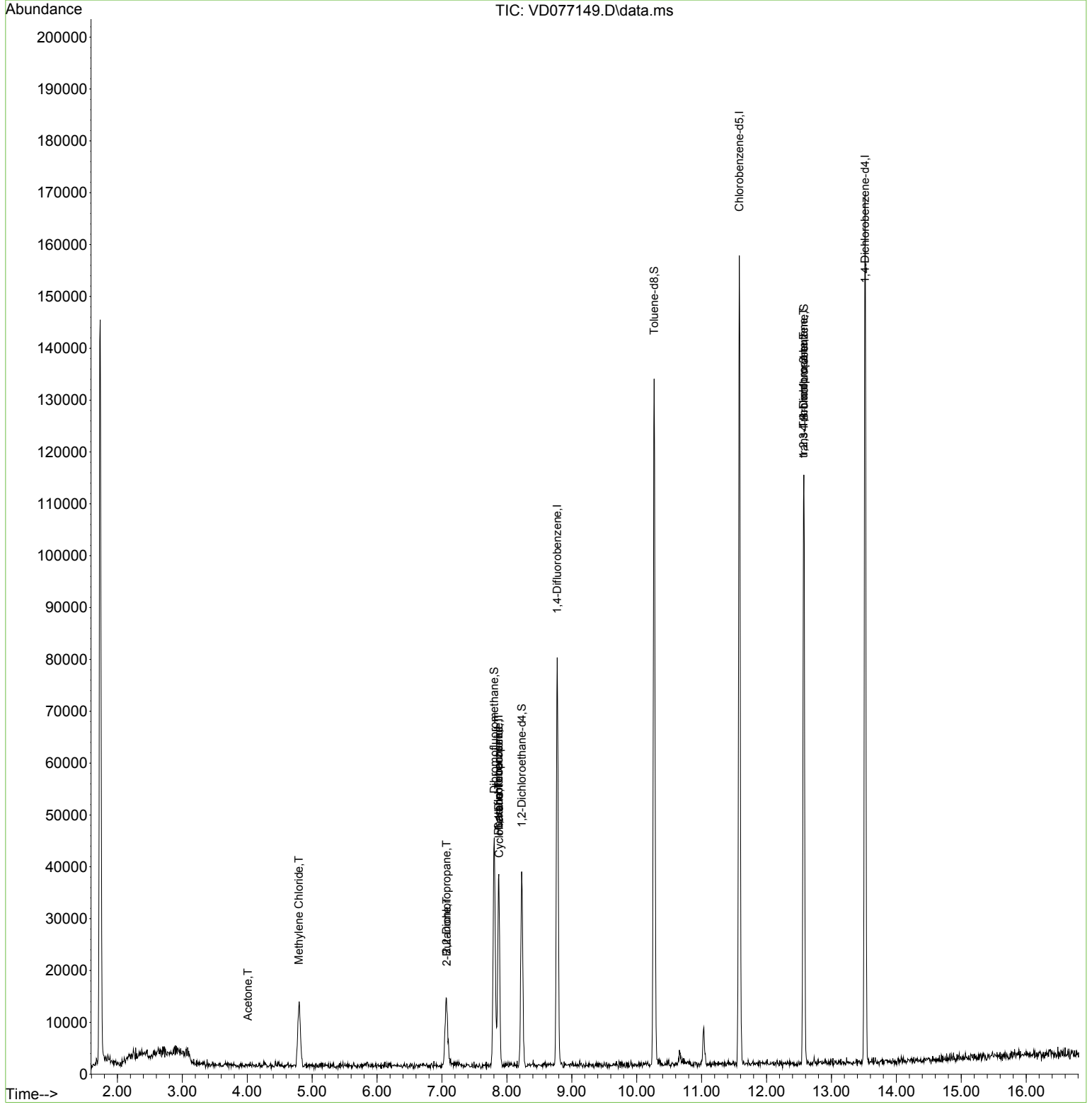
Quant Time: Sep 20 02:03:24 2023  
 Quant Method : Z:\voasrv\HPCHEM1\MSVOA\_D\Method\82D091823S.M  
 Quant Title : SW846 8260  
 QLast Update : Tue Sep 19 04:46:37 2023  
 Response via : Initial Calibration

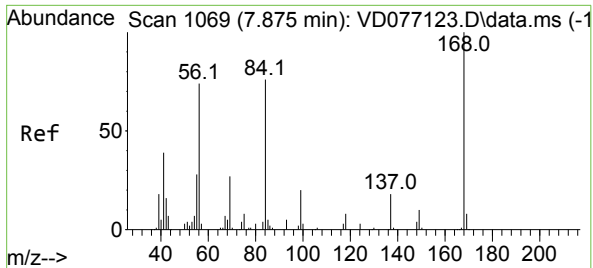
Compound	R.T.	QIon	Response	Conc	Units	Dev(Min)
-----						
Internal Standards						
1) Pentafluorobenzene	7.869	168	27413	50.000	ug/l	0.00
34) 1,4-Difluorobenzene	8.775	114	72096	50.000	ug/l	0.00
63) Chlorobenzene-d5	11.581	117	94855	50.000	ug/l	0.00
72) 1,4-Dichlorobenzene-d4	13.516	152	49013	50.000	ug/l	0.00
System Monitoring Compounds						
33) 1,2-Dichloroethane-d4	8.228	65	28263	102.160	ug/l	0.00
Spiked Amount	50.000	Range	50 - 163	Recovery	=	204.320%#
35) Dibromofluoromethane	7.805	113	31050	62.004	ug/l	0.00
Spiked Amount	50.000	Range	54 - 147	Recovery	=	124.000%
50) Toluene-d8	10.269	98	96043	53.882	ug/l	0.00
Spiked Amount	50.000	Range	58 - 134	Recovery	=	107.760%
62) 4-Bromofluorobenzene	12.575	95	35875	64.936	ug/l	0.00
Spiked Amount	50.000	Range	30 - 143	Recovery	=	129.880%
Target Compounds						
					Qvalue	
16) Acetone	4.011	43	86	1.360	ug/l #	32
20) Methylene Chloride	4.793	84	9696	19.906	ug/l	90
25) 2-Butanone	7.075	43	216	2.597	ug/l #	37
26) 2,2-Dichloropropane	7.069	77	1153	2.151	ug/l #	49
31) Cyclohexane	7.881	56	509	1.052	ug/l #	64
36) 1,1-Dichloropropene	7.875	75	2485	3.295	ug/l #	39
38) Carbon Tetrachloride	7.875	117	2713	3.660	ug/l #	11
76) 1,2,3-Trichloropropane	12.569	75	18201	46.554	ug/l #	100
81) trans-1,4-Dichloro-2-b...	12.569	75	18201	88.118	ug/l #	17
-----						

(#) = qualifier out of range (m) = manual integration (+) = signals summed

Data Path : Z:\voasrv\HPCHEM1\MSVOA\_D\Data\VD091923\  
 Data File : VD077149.D  
 Acq On : 19 Sep 2023 16:32  
 Operator : JC/SY  
 Sample : 04443-01  
 Misc : 5.05G/5.0ml/MSVOA\_D/SOIL  
 ALS Vial : 9 Sample Multiplier: 1

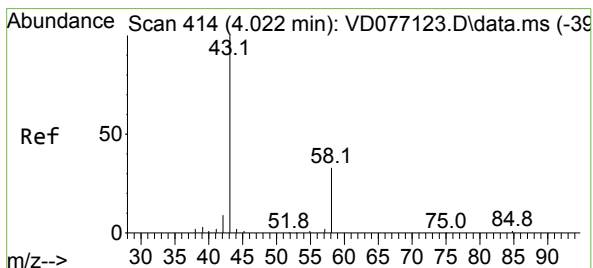
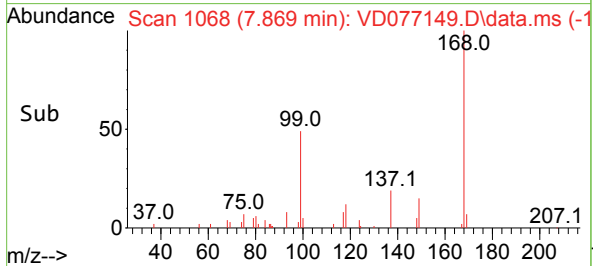
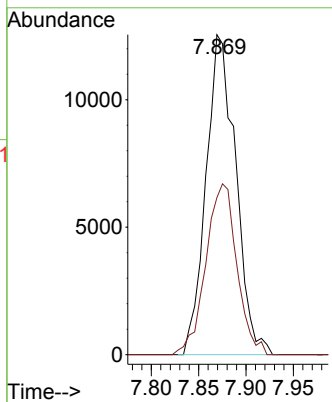
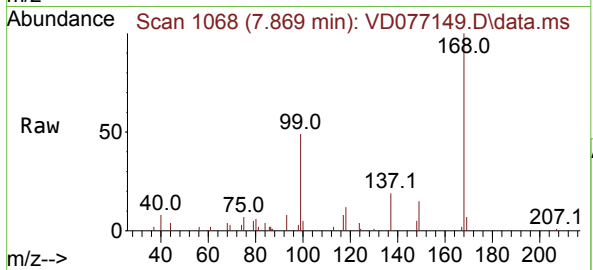
Quant Time: Sep 20 02:03:24 2023  
 Quant Method : Z:\voasrv\HPCHEM1\MSVOA\_D\Method\82D091823S.M  
 Quant Title : SW846 8260  
 QLast Update : Tue Sep 19 04:46:37 2023  
 Response via : Initial Calibration





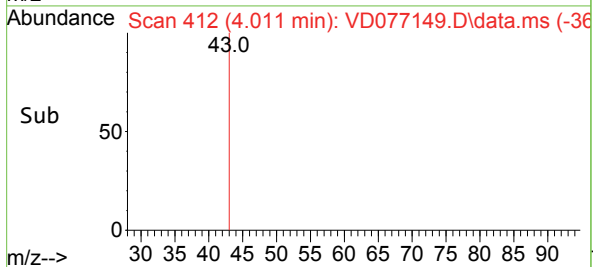
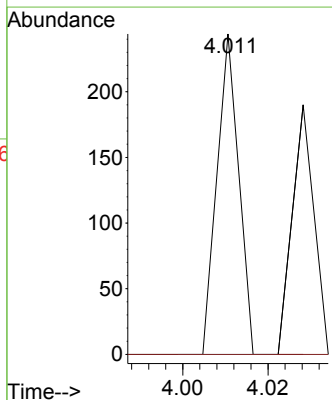
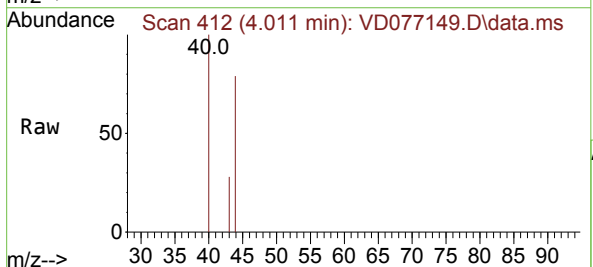
#1  
 Pentafluorobenzene  
 Concen: 50.000 ug/l  
 RT: 7.869 min Scan# 1068  
 Delta R.T. -0.006 min  
 Lab File: VD077149.D  
 Acq: 19 Sep 2023 16:32

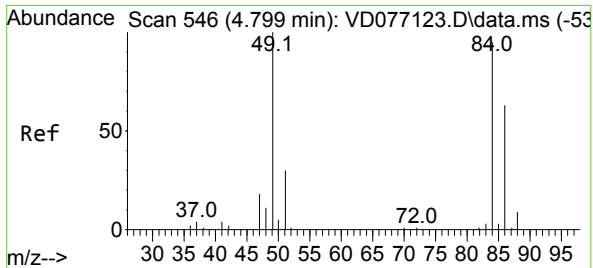
Tgt Ion:168 Resp: 27413  
 Ion Ratio Lower Upper  
 168 100  
 99 49.1 36.7 55.1



#16  
 Acetone  
 Concen: 1.360 ug/l  
 RT: 4.011 min Scan# 412  
 Delta R.T. -0.012 min  
 Lab File: VD077149.D  
 Acq: 19 Sep 2023 16:32

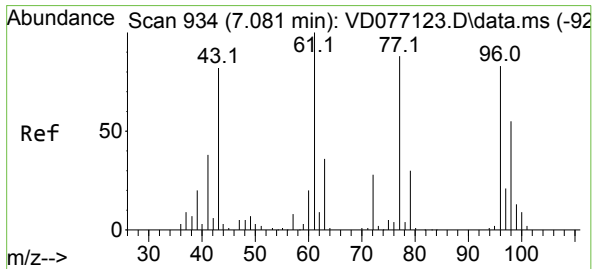
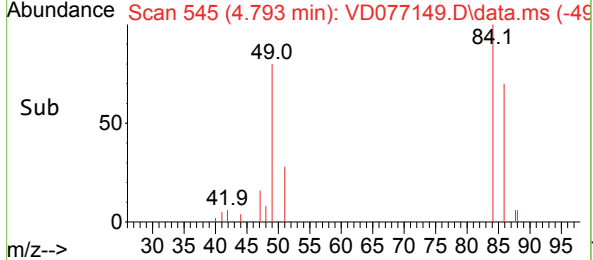
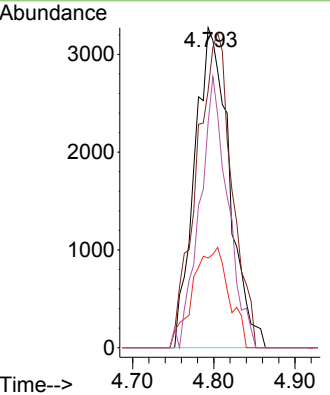
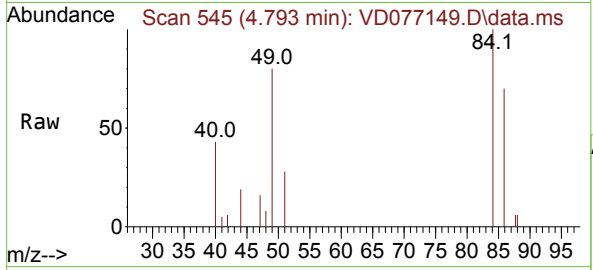
Tgt Ion: 43 Resp: 86  
 Ion Ratio Lower Upper  
 43 100  
 58 0.0 34.7 52.1#





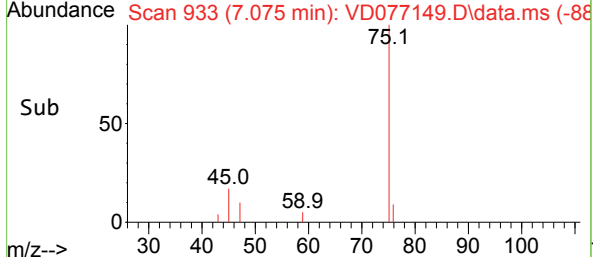
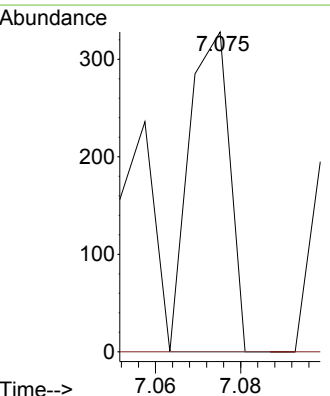
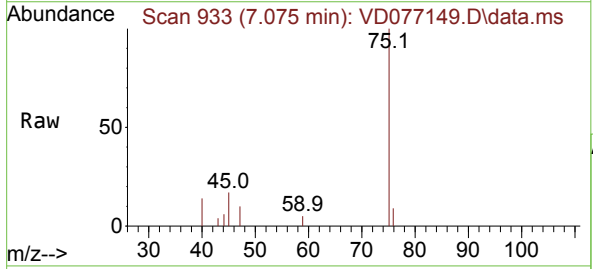
#20  
 Methylene Chloride  
 Concen: 19.906 ug/l  
 RT: 4.793 min Scan# 545  
 Delta R.T. -0.006 min  
 Lab File: VD077149.D  
 Acq: 19 Sep 2023 16:32

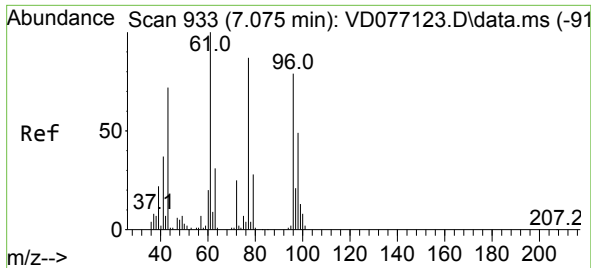
Tgt Ion	Resp	Lower	Upper
84	9696		
49	80.4	71.4	107.2
51	28.0	24.5	36.7
86	70.3	48.7	73.1



#25  
 2-Butanone  
 Concen: 2.597 ug/l  
 RT: 7.075 min Scan# 933  
 Delta R.T. -0.006 min  
 Lab File: VD077149.D  
 Acq: 19 Sep 2023 16:32

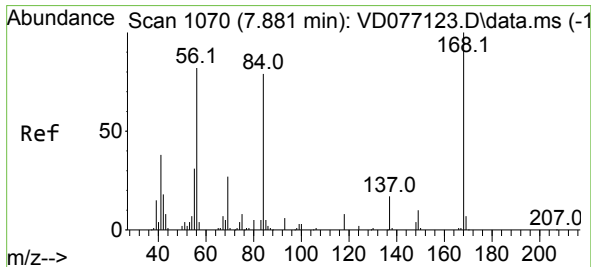
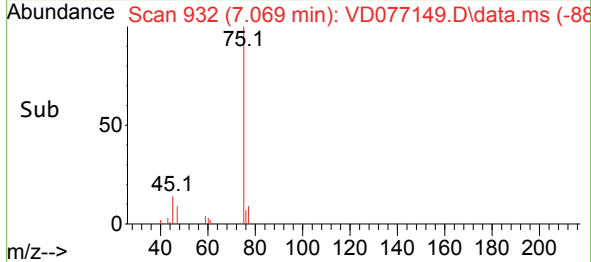
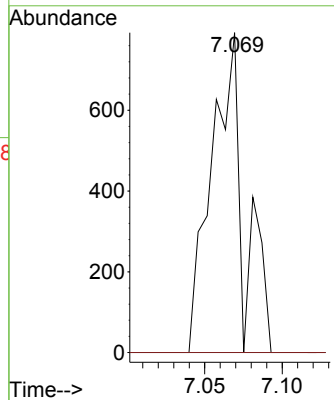
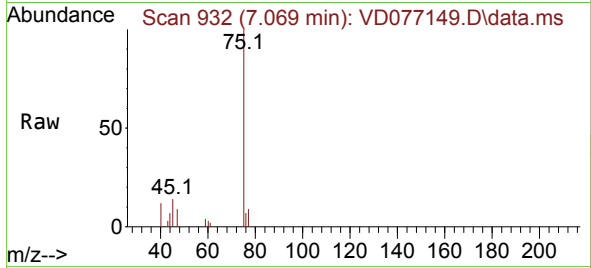
Tgt Ion	Resp	Lower	Upper
43	216		
72	0.0	30.7	46.1#





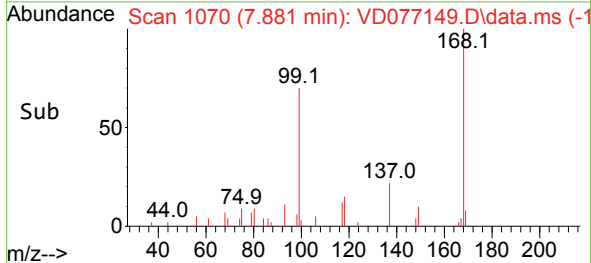
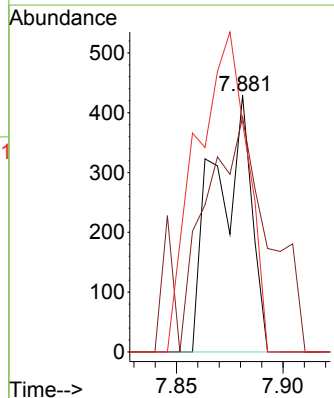
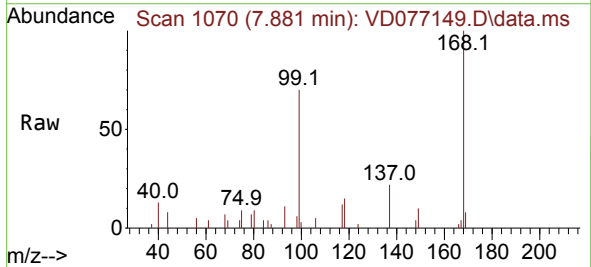
#26  
 2,2-Dichloropropane  
 Concen: 2.151 ug/l  
 RT: 7.069 min Scan# 932  
 Delta R.T. -0.006 min  
 Lab File: VD077149.D  
 Acq: 19 Sep 2023 16:32

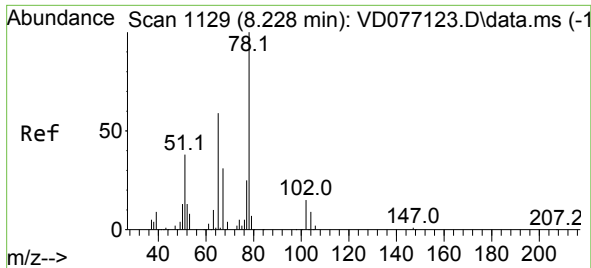
Tgt Ion: 77 Resp: 1153  
 Ion Ratio Lower Upper  
 77 100  
 97 0.0 13.2 39.6#



#31  
 Cyclohexane  
 Concen: 1.052 ug/l  
 RT: 7.881 min Scan# 1070  
 Delta R.T. 0.000 min  
 Lab File: VD077149.D  
 Acq: 19 Sep 2023 16:32

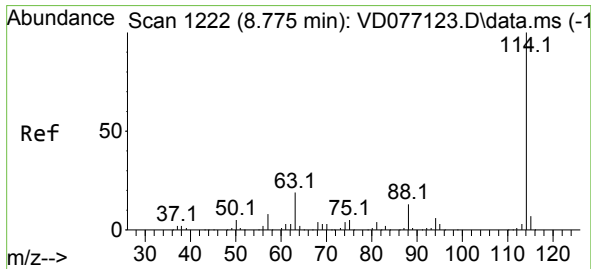
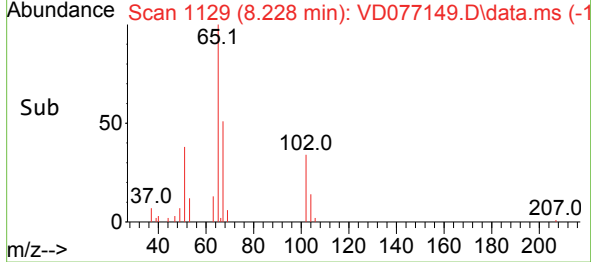
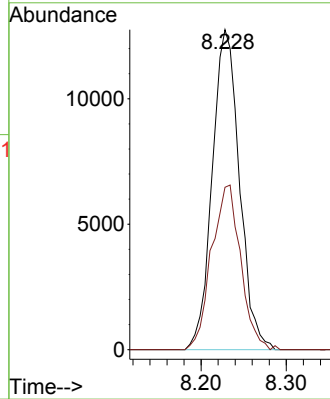
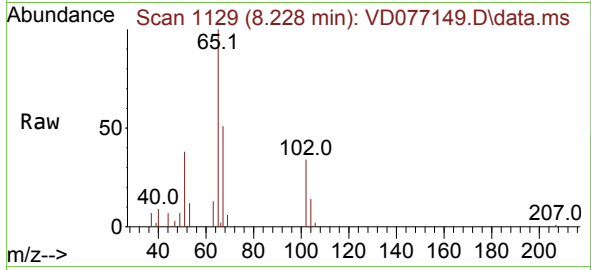
Tgt Ion: 56 Resp: 509  
 Ion Ratio Lower Upper  
 56 100  
 69 91.6 28.6 43.0#  
 84 89.3 84.8 127.2





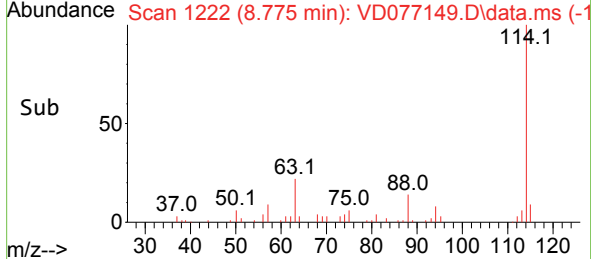
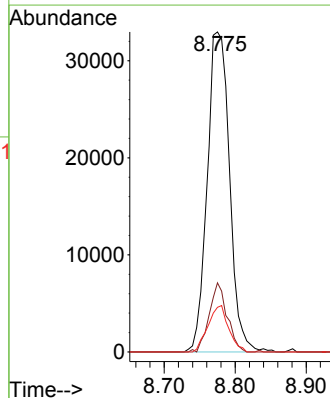
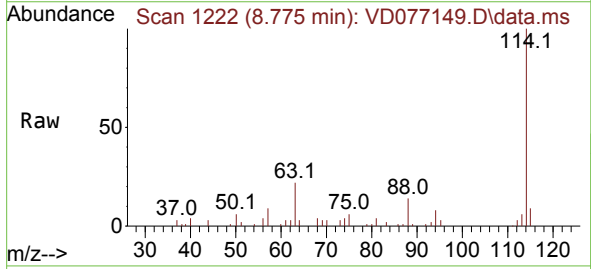
#33  
 1,2-Dichloroethane-d4  
 Concen: 102.160 ug/l  
 RT: 8.228 min Scan# 1129  
 Delta R.T. 0.000 min  
 Lab File: VD077149.D  
 Acq: 19 Sep 2023 16:32

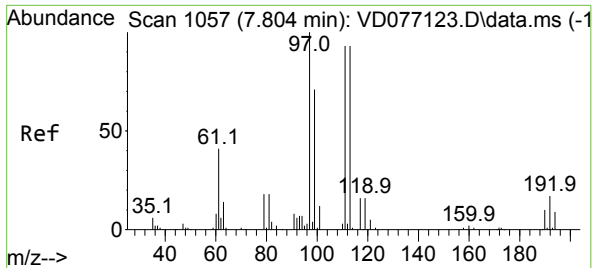
Tgt Ion: 65 Resp: 28263  
 Ion Ratio Lower Upper  
 65 100  
 67 55.1 0.0 115.0



#34  
 1,4-Difluorobenzene  
 Concen: 50.000 ug/l  
 RT: 8.775 min Scan# 1222  
 Delta R.T. 0.000 min  
 Lab File: VD077149.D  
 Acq: 19 Sep 2023 16:32

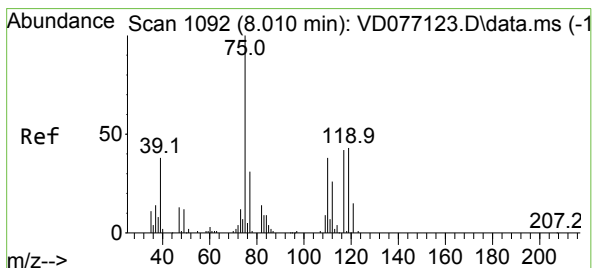
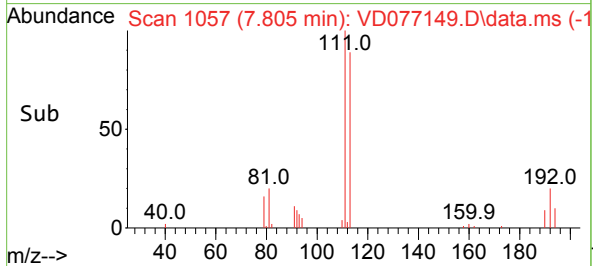
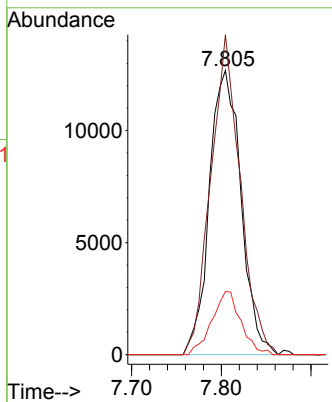
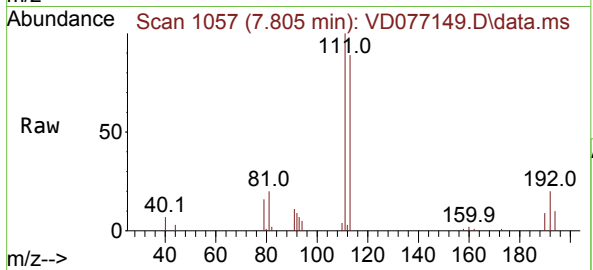
Tgt Ion:114 Resp: 72096  
 Ion Ratio Lower Upper  
 114 100  
 63 21.6 0.0 33.4  
 88 13.9 0.0 26.2





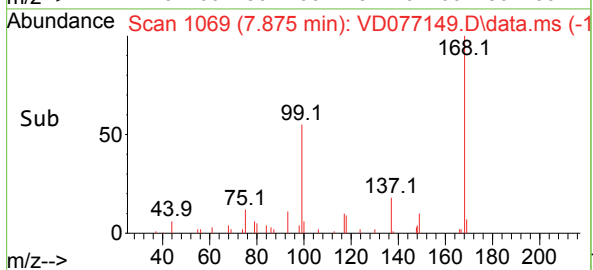
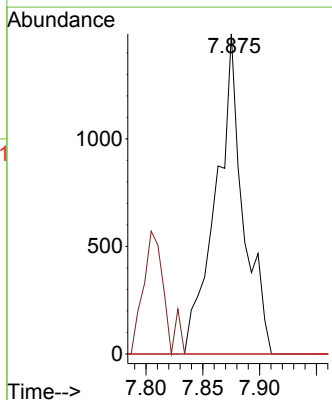
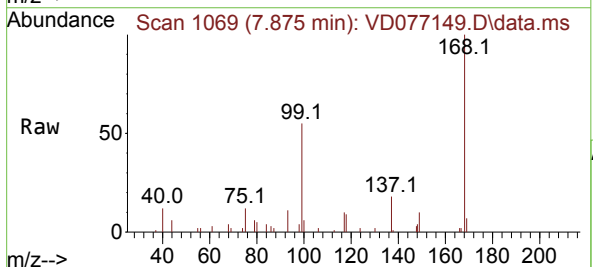
#35  
 Dibromofluoromethane  
 Concen: 62.004 ug/l  
 RT: 7.805 min Scan# 1057  
 Delta R.T. 0.000 min  
 Lab File: VD077149.D  
 Acq: 19 Sep 2023 16:32

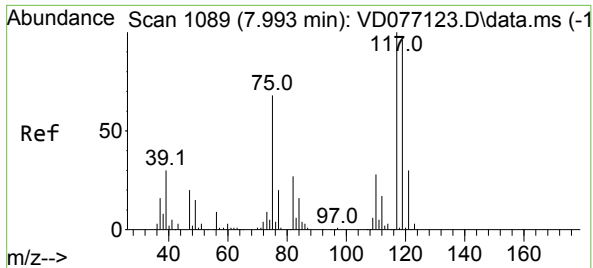
Tgt Ion	Resp	Lower	Upper
113	31050		
113	100		
111	105.0	84.7	127.1
192	20.5	16.8	25.2



#36  
 1,1-Dichloropropene  
 Concen: 3.295 ug/l  
 RT: 7.875 min Scan# 1069  
 Delta R.T. -0.135 min  
 Lab File: VD077149.D  
 Acq: 19 Sep 2023 16:32

Tgt Ion	Resp	Lower	Upper
75	2485		
75	100		
110	0.0	19.9	59.6#
77	0.0	24.7	37.1#

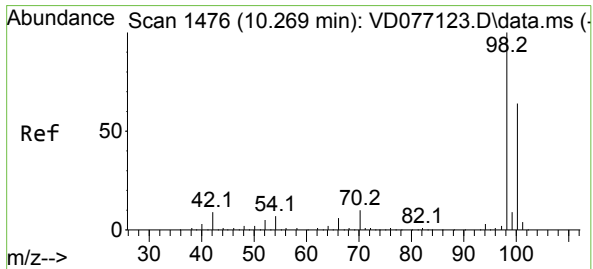
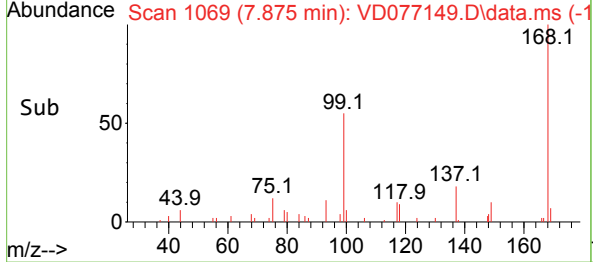
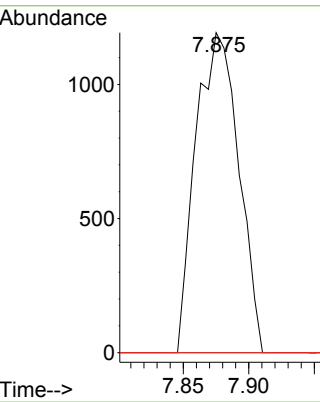
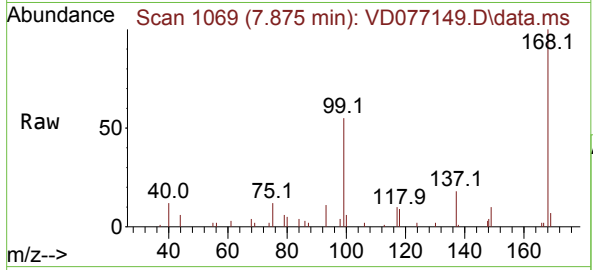




#38  
 Carbon Tetrachloride  
 Concen: 3.660 ug/l  
 RT: 7.875 min Scan# 1069  
 Delta R.T. -0.117 min  
 Lab File: VD077149.D  
 Acq: 19 Sep 2023 16:32

Tgt Ion:117 Resp: 2713

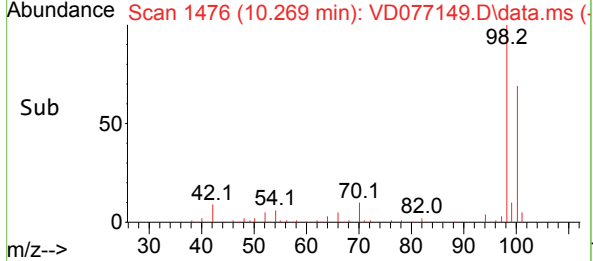
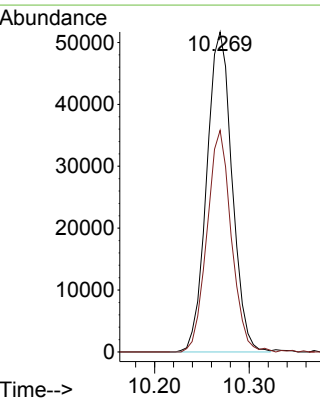
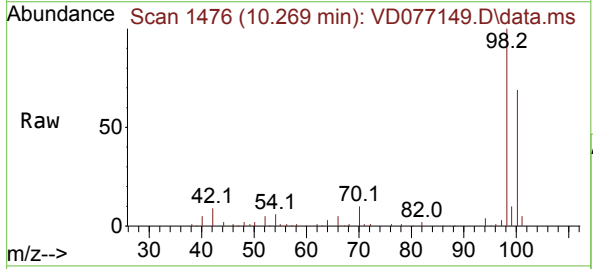
Ion	Ratio	Lower	Upper
117	100		
119	0.0	78.0	117.0#
121	0.0	24.2	36.2#



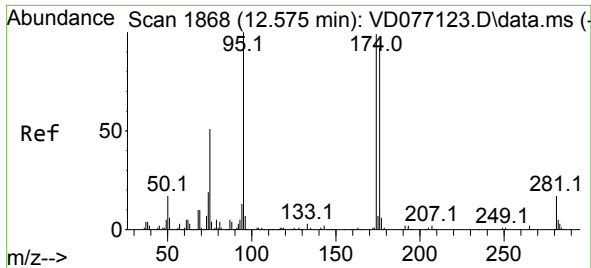
#50  
 Toluene-d8  
 Concen: 53.882 ug/l  
 RT: 10.269 min Scan# 1476  
 Delta R.T. 0.000 min  
 Lab File: VD077149.D  
 Acq: 19 Sep 2023 16:32

Tgt Ion: 98 Resp: 96043

Ion	Ratio	Lower	Upper
98	100		
100	66.4	50.3	75.5

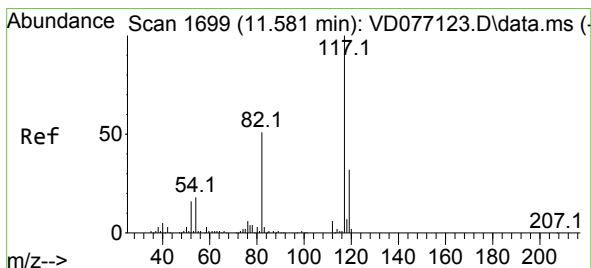
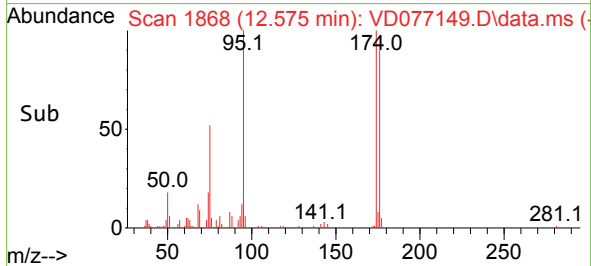
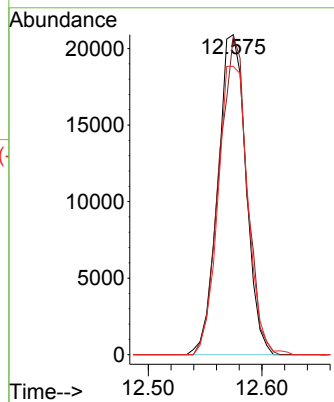
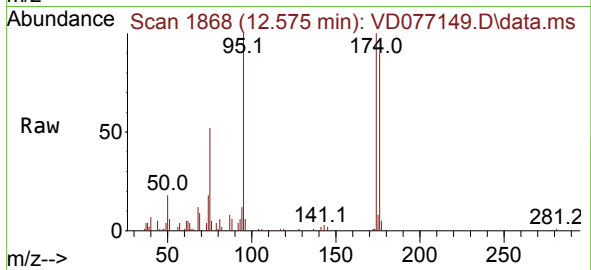






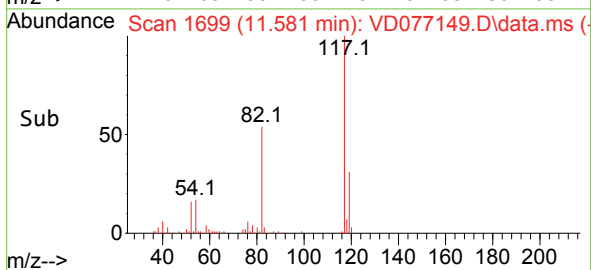
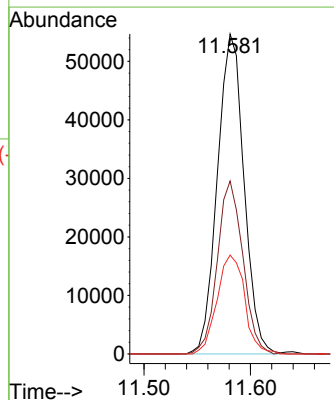
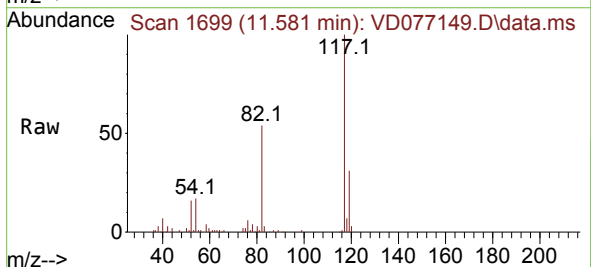
#62  
 4-Bromofluorobenzene  
 Concen: 64.936 ug/l  
 RT: 12.575 min Scan# 1868  
 Delta R.T. 0.000 min  
 Lab File: VD077149.D  
 Acq: 19 Sep 2023 16:32

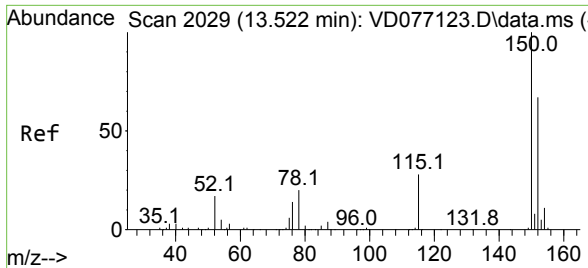
Tgt Ion	Resp	Lower	Upper
95	35875		
174	98.9	0.0	201.8
176	96.0	0.0	191.8



#63  
 Chlorobenzene-d5  
 Concen: 50.000 ug/l  
 RT: 11.581 min Scan# 1699  
 Delta R.T. 0.000 min  
 Lab File: VD077149.D  
 Acq: 19 Sep 2023 16:32

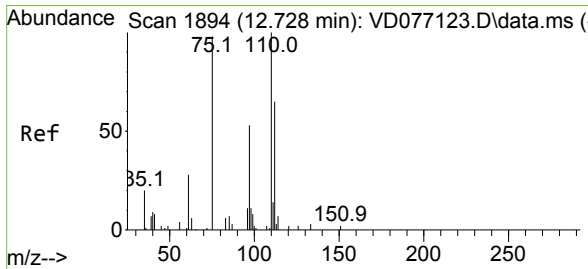
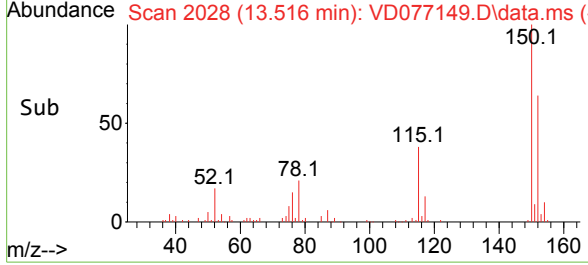
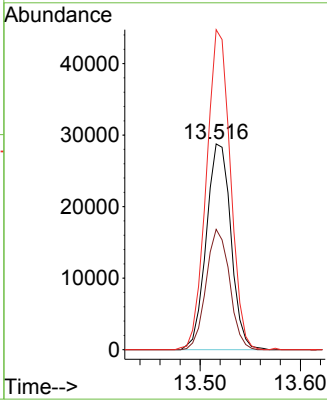
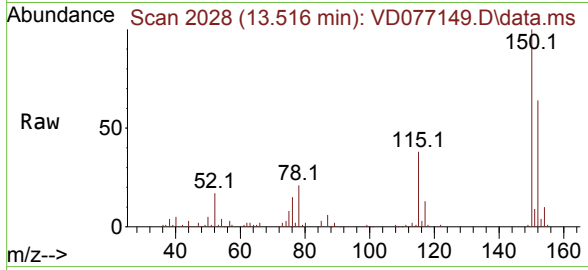
Tgt Ion	Resp	Lower	Upper
117	94855		
82	54.0	38.3	57.5
119	30.9	25.0	37.4





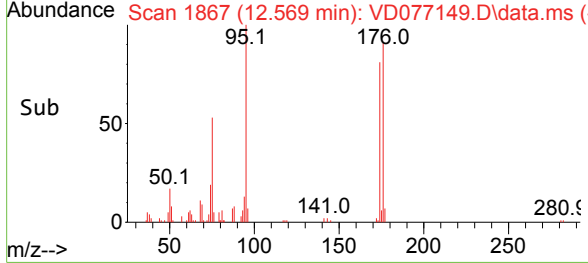
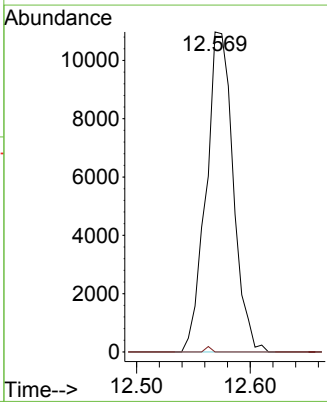
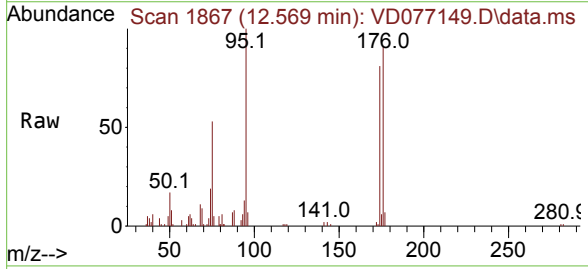
#72  
 1,4-Dichlorobenzene-d4  
 Concen: 50.000 ug/l  
 RT: 13.516 min Scan# 2028  
 Delta R.T. -0.006 min  
 Lab File: VD077149.D  
 Acq: 19 Sep 2023 16:32

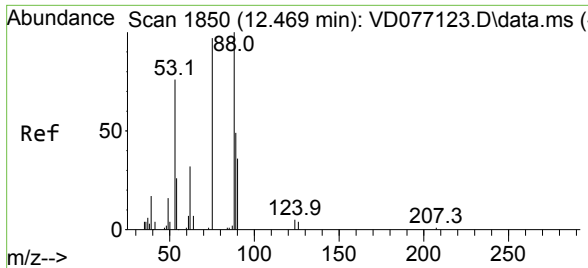
Tgt Ion	Resp	Lower	Upper
152	100		
115	55.7	27.1	81.3
150	151.5	0.0	353.6



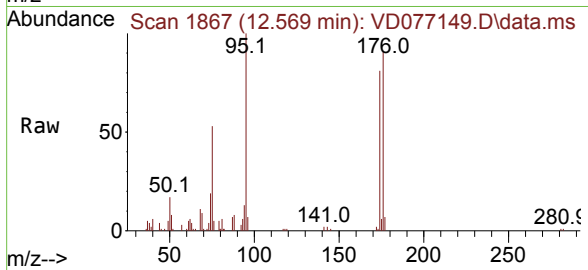
#76  
 1,2,3-Trichloropropane  
 Concen: 46.554 ug/l  
 RT: 12.569 min Scan# 1867  
 Delta R.T. -0.159 min  
 Lab File: VD077149.D  
 Acq: 19 Sep 2023 16:32

Tgt Ion	Resp	Lower	Upper
75	100		
77	0.4	0.0	0.0#





#81  
 trans-1,4-Dichloro-2-butene  
 Concen: 88.118 ug/l  
 RT: 12.569 min Scan# 1867  
 Delta R.T. 0.100 min  
 Lab File: VD077149.D  
 Acq: 19 Sep 2023 16:32



Tgt Ion: 75 Resp: 18201

Ion	Ratio	Lower	Upper
75	100		
53	0.0	63.0	94.4#
89	0.0	37.9	56.9#

