

Data Path : Z:\voasrv\HPCHEM1\MSVOA_D\Data\VD092021\
 Data File : VD070379.D
 Acq On : 20 Sep 2021 12:54
 Operator : VA/SY
 Sample : M3804-01
 Misc : 5.01G/5.00ml/MSVOA_D/SOIL
 ALS Vial : 6 Sample Multiplier: 1

Instrument :
 MSVOA_D
 ClientSampleId :
 CL-01-091721

Quant Time: Sep 21 03:33:21 2021
 Quant Method : Z:\voasrv\HPCHEM1\MSVOA_D\Method\82D090821S.M
 Quant Title : SW846 8260
 QLast Update : Thu Sep 09 03:07:09 2021
 Response via : Initial Calibration

Compound	R.T.	QIon	Response	Conc	Units	Dev(Min)

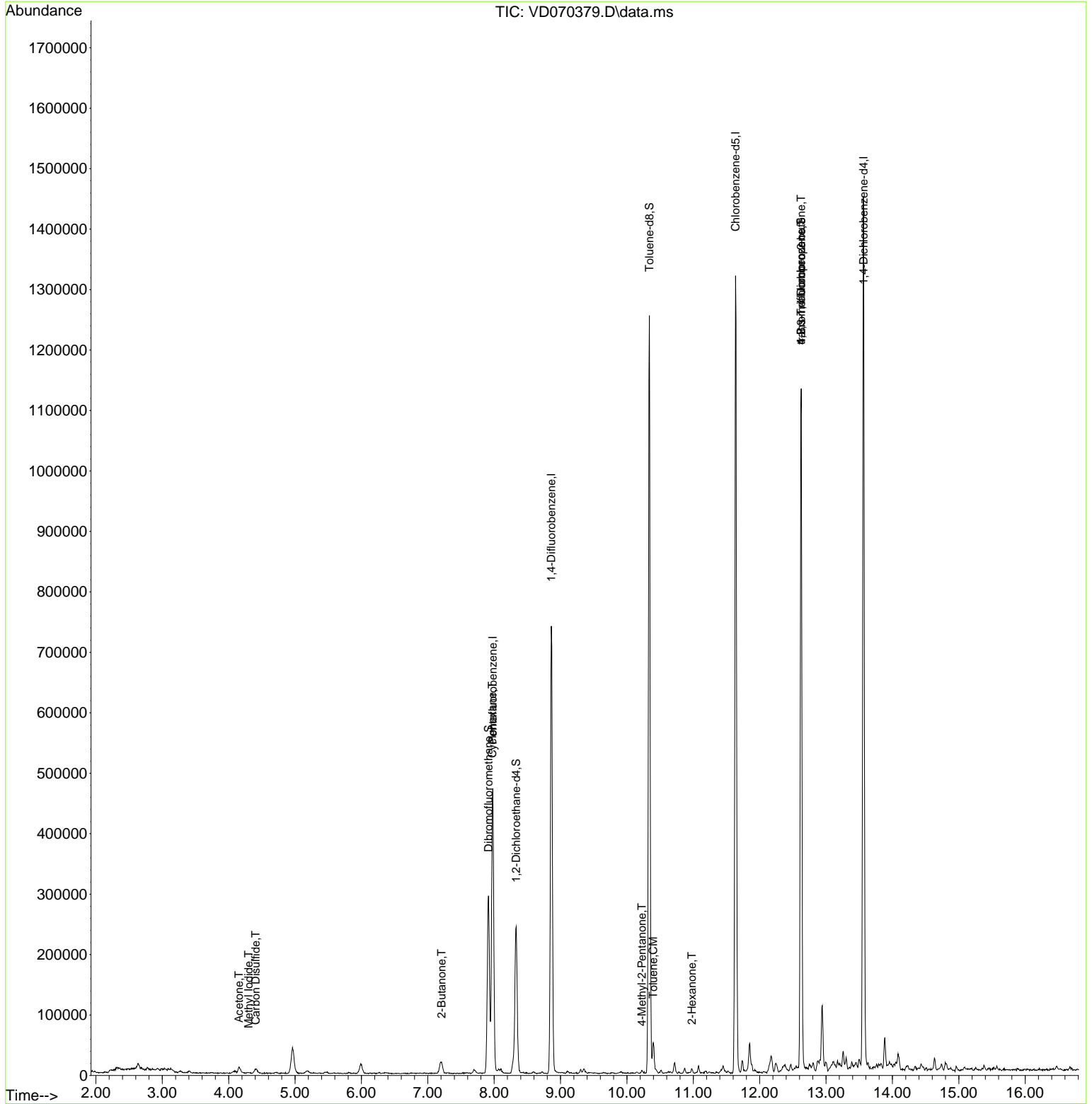
Internal Standards						
1) Pentafluorobenzene	7.979	168	321951	50.000	ug/l	0.00
34) 1,4-Difluorobenzene	8.861	114	643790	50.000	ug/l	0.00
63) Chlorobenzene-d5	11.638	117	783340	50.000	ug/l	0.00
72) 1,4-Dichlorobenzene-d4	13.567	152	379113	50.000	ug/l	0.00
System Monitoring Compounds						
33) 1,2-Dichloroethane-d4	8.332	65	189674	45.882	ug/l	0.00
Spiked Amount	50.000	Range	50 - 163	Recovery	=	91.760%
35) Dibromofluoromethane	7.914	113	216640	47.275	ug/l	0.00
Spiked Amount	50.000	Range	54 - 147	Recovery	=	94.540%
50) Toluene-d8	10.338	98	854833	51.378	ug/l	0.00
Spiked Amount	50.000	Range	49 - 140	Recovery	=	102.760%
62) 4-Bromofluorobenzene	12.626	95	400414	68.861	ug/l	0.00
Spiked Amount	50.000	Range	25 - 144	Recovery	=	137.720%
Target Compounds						
						Qvalue
2) Dichlorodifluoromethane	1.985	85	1668	Below Cal		75
3) Chloromethane	2.209	50	2250	Below Cal		95
5) Bromomethane	2.779	94	2899	Below Cal		86
6) Chloroethane	2.920	64	991	Below Cal	#	47
10) Methyl Iodide	4.303	142	1511	1.400	ug/l #	87
16) Acetone	4.156	43	17522	23.741	ug/l	99
17) Carbon Disulfide	4.409	76	15763	1.140	ug/l #	92
18) Methyl Acetate	4.714	43	123	Below Cal	#	48
25) 2-Butanone	7.208	43	8981	9.141	ug/l	97
31) Cyclohexane	7.973	56	10009	1.406	ug/l #	23
51) 4-Methyl-2-Pentanone	10.226	43	2965	1.204	ug/l	89
52) Toluene	10.397	92	20183	1.656	ug/l	92
59) 2-Hexanone	10.979	43	4844	2.949	ug/l	88
76) 1,2,3-Trichloropropane	12.626	75	193702	50.512	ug/l #	1
81) trans-1,4-Dichloro-2-b...	12.626	75	193702	126.562	ug/l #	18

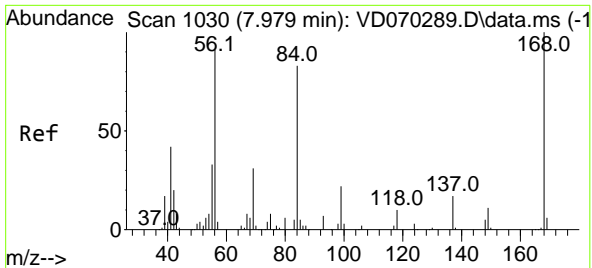
(#) = qualifier out of range (m) = manual integration (+) = signals summed

Data Path : Z:\voasrv\HPCHEM1\MSVOA_D\Data\VD092021\
 Data File : VD070379.D
 Acq On : 20 Sep 2021 12:54
 Operator : VA/SY
 Sample : M3804-01
 Misc : 5.01G/5.00ml/MSVOA_D/SOIL
 ALS Vial : 6 Sample Multiplier: 1

Instrument :
 MSVOA_D
 Client Sampled :
 CL-01-091721

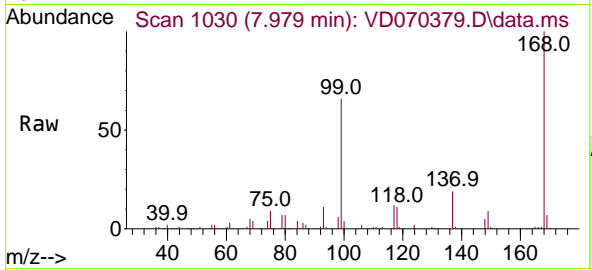
Quant Time: Sep 21 03:33:21 2021
 Quant Method : Z:\voasrv\HPCHEM1\MSVOA_D\Method\82D090821S.M
 Quant Title : SW846 8260
 QLast Update : Thu Sep 09 03:07:09 2021
 Response via : Initial Calibration



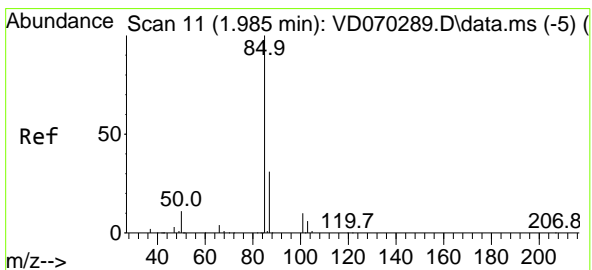
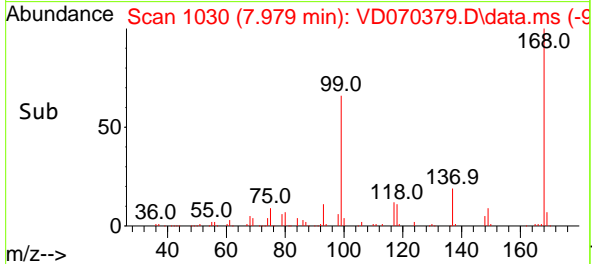
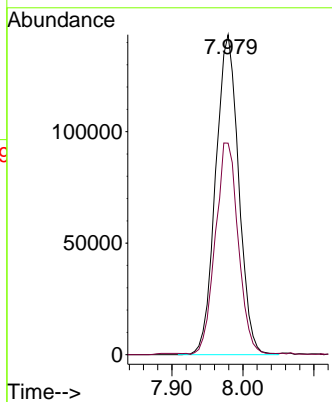


#1
 Pentafluorobenzene
 Concen: 50.000 ug/l
 RT: 7.979 min Scan# 1030
 Delta R.T. 0.000 min
 Lab File: VD070379.D
 Acq: 20 Sep 2021 12:54

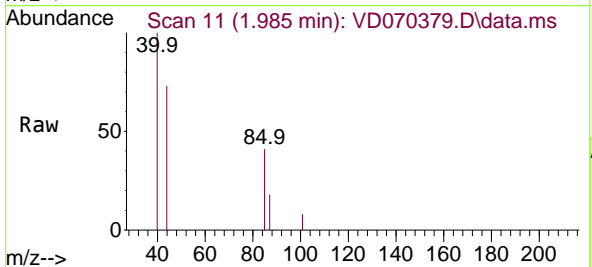
Instrument :
 MSVOA_D
 ClientSampled :
 CL-01-091721



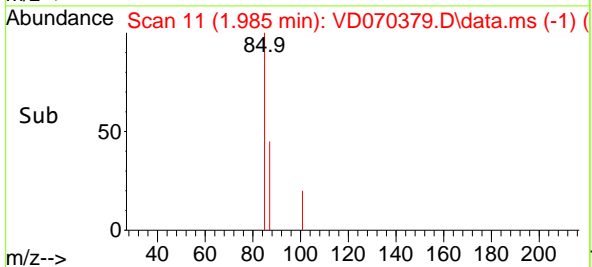
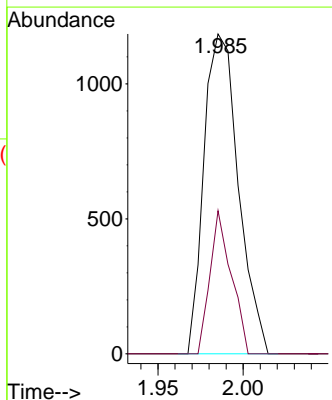
Tgt Ion:168 Resp: 321951
 Ion Ratio Lower Upper
 168 100
 99 65.7 50.8 76.2

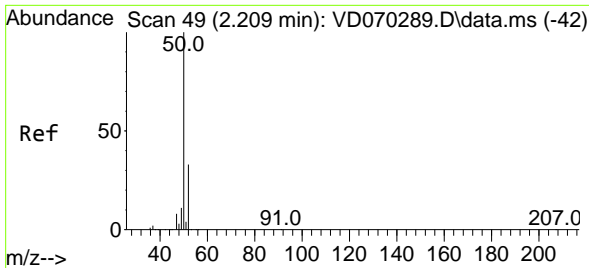


#2
 Dichlorodifluoromethane
 Concen: Below Cal
 RT: 1.985 min Scan# 11
 Delta R.T. 0.000 min
 Lab File: VD070379.D
 Acq: 20 Sep 2021 12:54



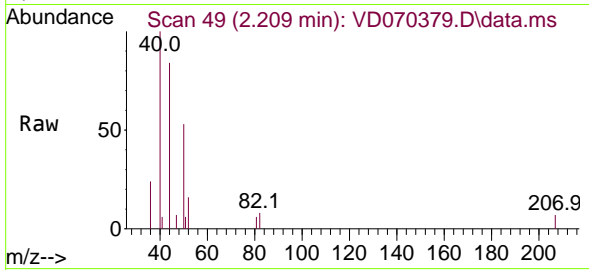
Tgt Ion: 85 Resp: 1668
 Ion Ratio Lower Upper
 85 100
 87 44.7 15.6 46.8



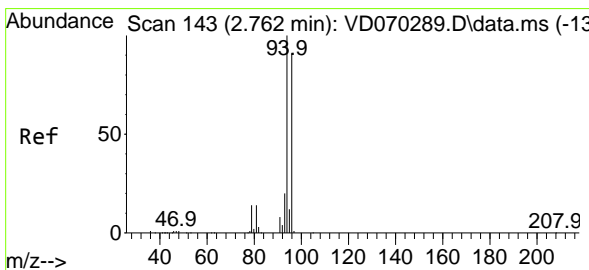
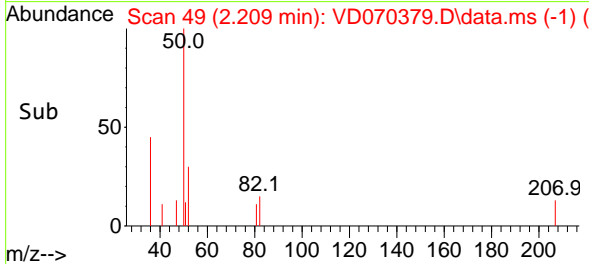
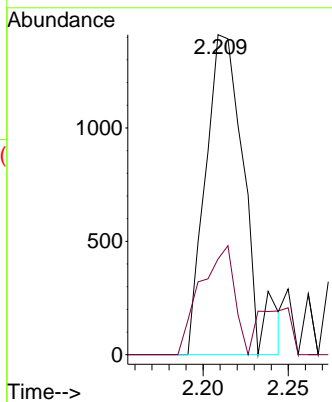


#3
 Chloromethane
 Concen: Below Cal
 RT: 2.209 min Scan# 49
 Delta R.T. -0.000 min
 Lab File: VD070379.D
 Acq: 20 Sep 2021 12:54

Instrument :
 MSVOA_D
 ClientSampled :
 CL-01-091721

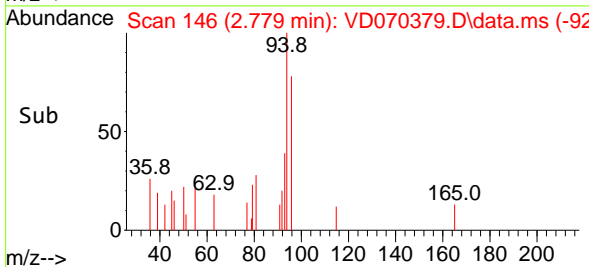
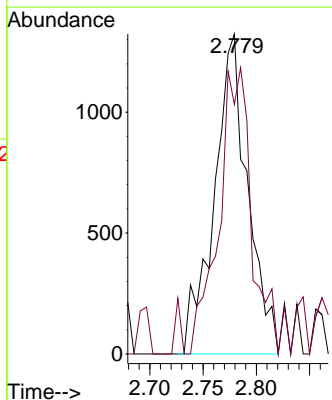
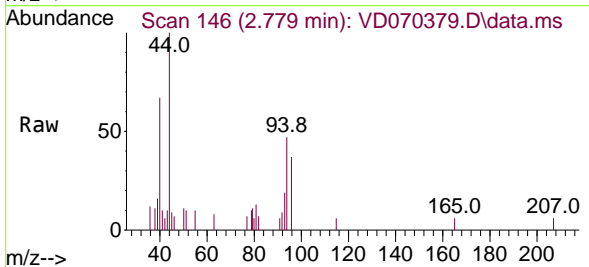


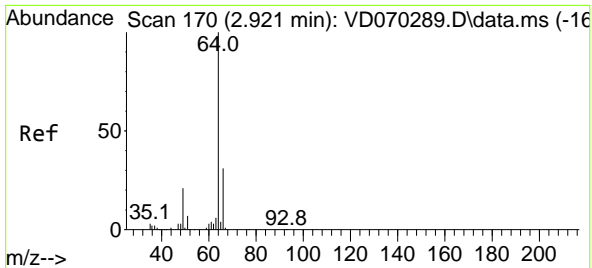
Tgt Ion: 50 Resp: 2250
 Ion Ratio Lower Upper
 50 100
 52 29.9 26.2 39.2



#5
 Bromomethane
 Concen: Below Cal
 RT: 2.779 min Scan# 146
 Delta R.T. 0.017 min
 Lab File: VD070379.D
 Acq: 20 Sep 2021 12:54

Tgt Ion: 94 Resp: 2899
 Ion Ratio Lower Upper
 94 100
 96 78.0 73.0 109.6

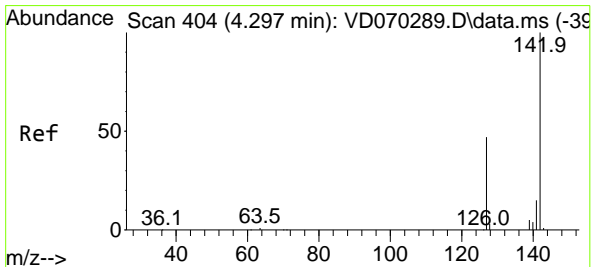
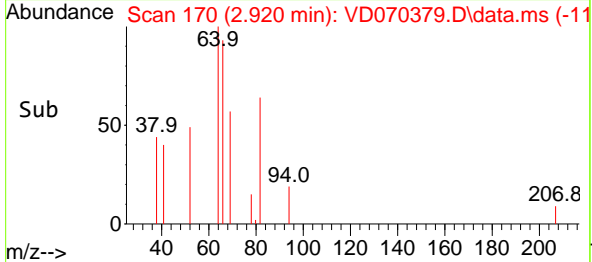
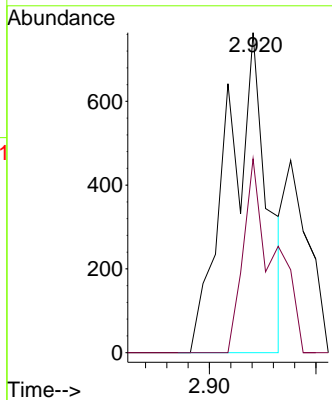
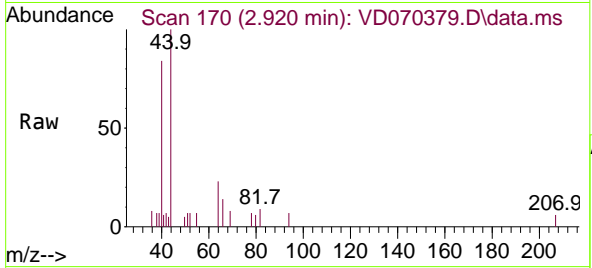




#6
 Chloroethane
 Concen: Below Cal
 RT: 2.920 min Scan# 170
 Delta R.T. -0.001 min
 Lab File: VD070379.D
 Acq: 20 Sep 2021 12:54

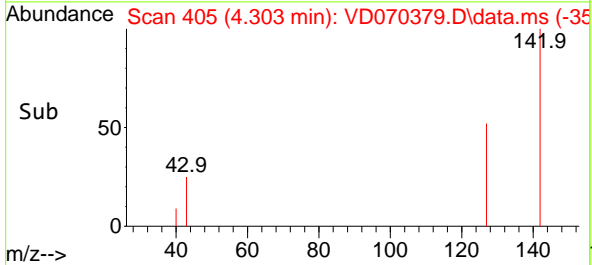
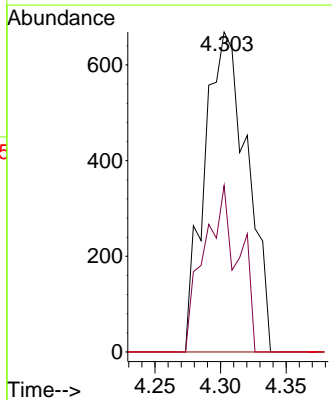
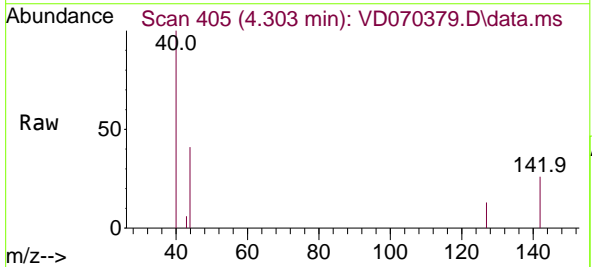
Instrument :
 MSVOA_D
 ClientSampleId :
 CL-01-091721

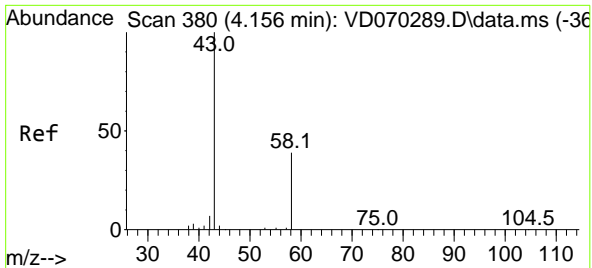
Tgt Ion: 64 Resp: 991
 Ion Ratio Lower Upper
 64 100
 66 60.6 25.0 37.4#



#10
 Methyl Iodide
 Concen: 1.400 ug/l
 RT: 4.303 min Scan# 405
 Delta R.T. 0.006 min
 Lab File: VD070379.D
 Acq: 20 Sep 2021 12:54

Tgt Ion: 142 Resp: 1511
 Ion Ratio Lower Upper
 142 100
 127 42.4 36.9 55.3
 141 0.0 11.8 17.6#

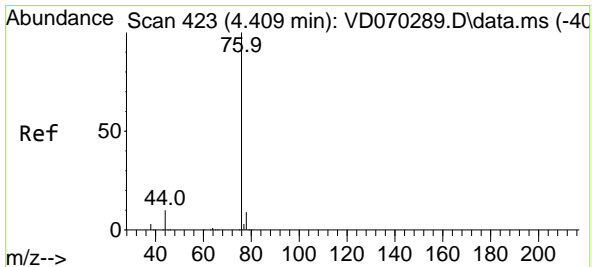
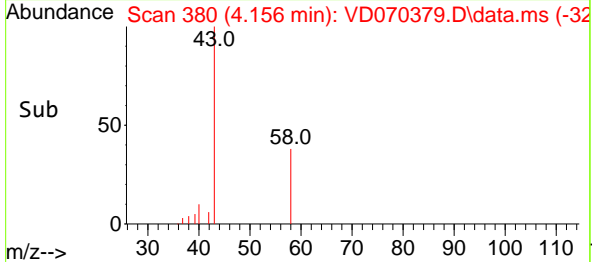
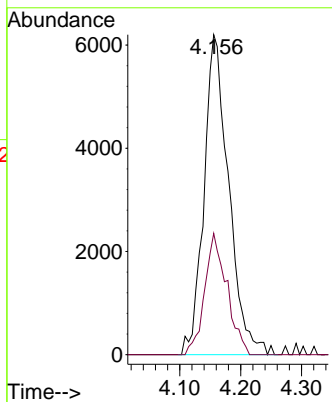
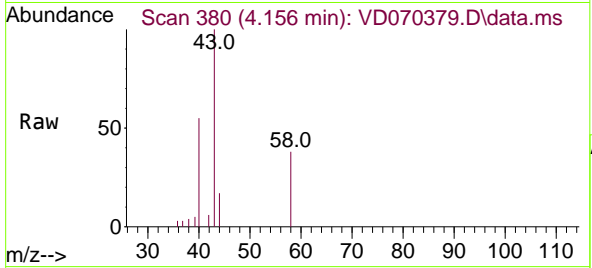




#16
 Acetone
 Concen: 23.741 ug/l
 RT: 4.156 min Scan# 380
 Delta R.T. -0.000 min
 Lab File: VD070379.D
 Acq: 20 Sep 2021 12:54

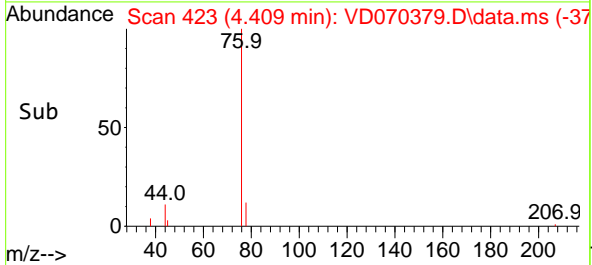
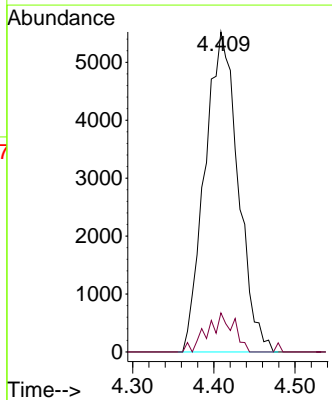
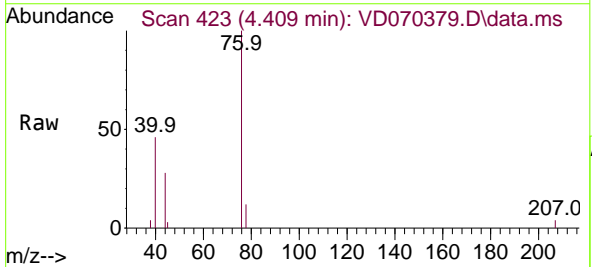
Instrument :
 MSVOA_D
 ClientSampled :
 CL-01-091721

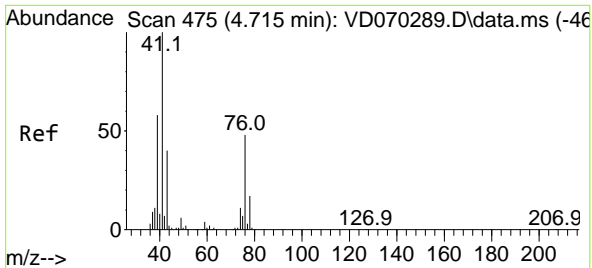
Tgt Ion: 43 Resp: 17522
 Ion Ratio Lower Upper
 43 100
 58 37.9 30.9 46.3



#17
 Carbon Disulfide
 Concen: 1.140 ug/l
 RT: 4.409 min Scan# 423
 Delta R.T. -0.000 min
 Lab File: VD070379.D
 Acq: 20 Sep 2021 12:54

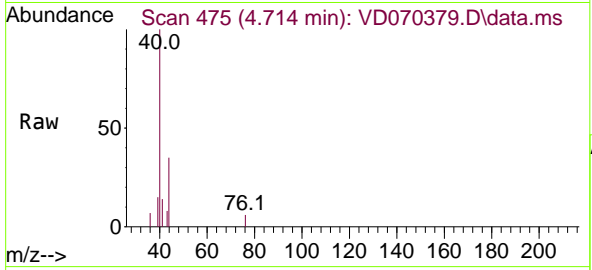
Tgt Ion: 76 Resp: 15763
 Ion Ratio Lower Upper
 76 100
 78 12.2 7.5 11.3#



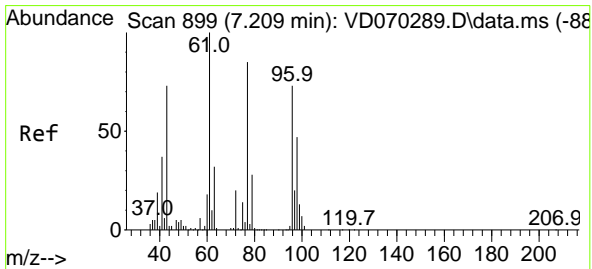
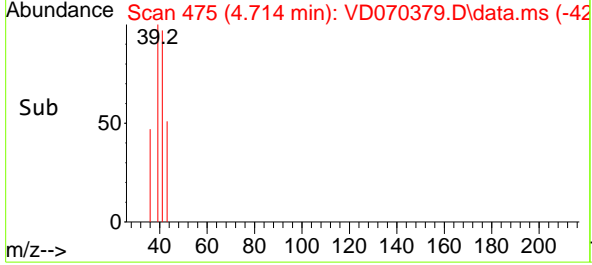
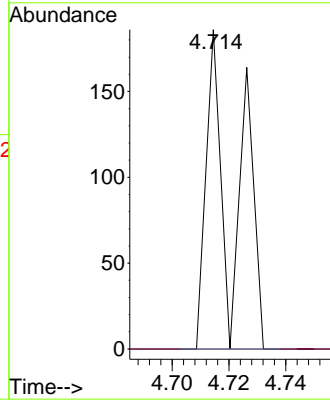


#18
 Methyl Acetate
 Concen: Below Cal
 RT: 4.714 min Scan# 475
 Delta R.T. -0.001 min
 Lab File: VD070379.D
 Acq: 20 Sep 2021 12:54

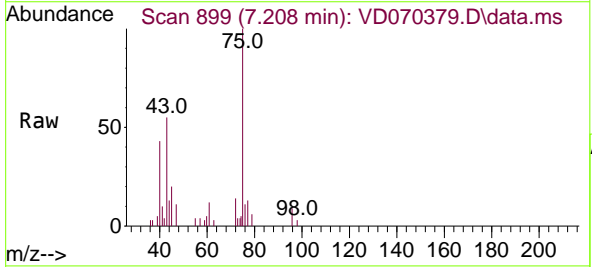
Instrument :
 MSVOA_D
 ClientSampled :
 CL-01-091721



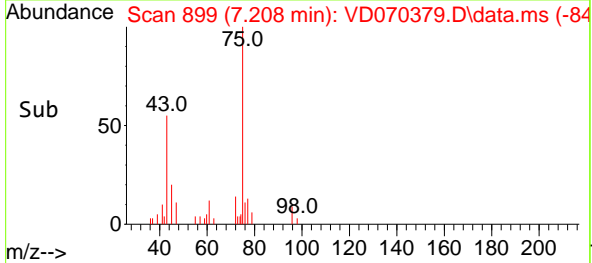
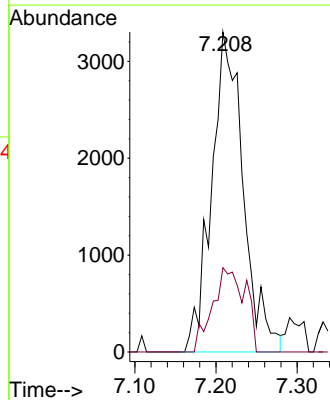
Tgt Ion: 43 Resp: 123
 Ion Ratio Lower Upper
 43 100
 74 0.0 21.6 32.4#

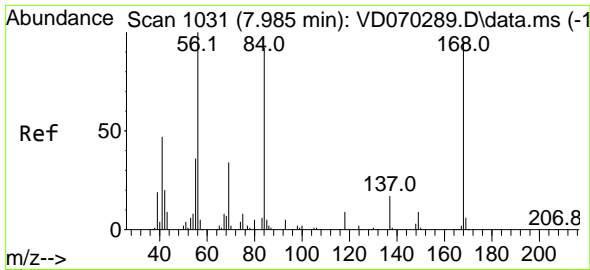


#25
 2-Butanone
 Concen: 9.141 ug/l
 RT: 7.208 min Scan# 899
 Delta R.T. -0.000 min
 Lab File: VD070379.D
 Acq: 20 Sep 2021 12:54



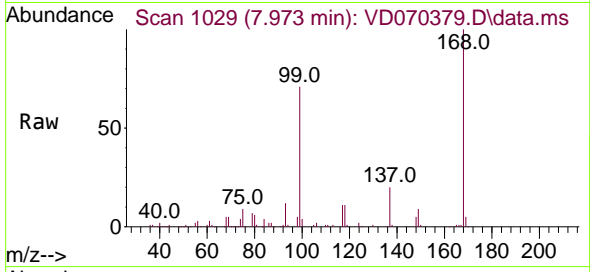
Tgt Ion: 43 Resp: 8981
 Ion Ratio Lower Upper
 43 100
 72 26.3 22.2 33.4



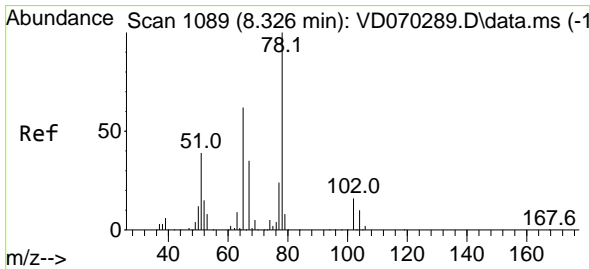
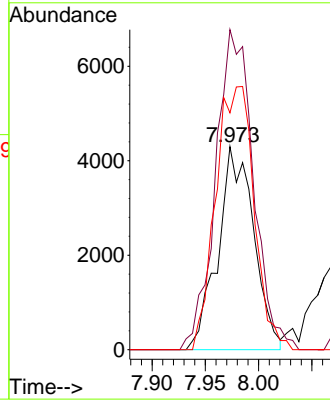
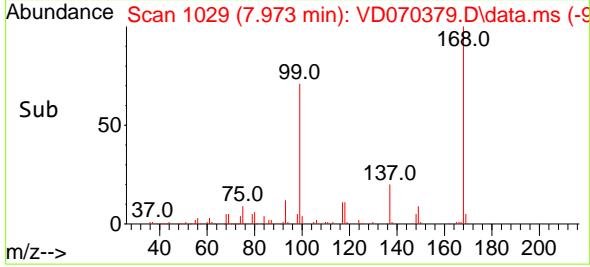


#31
 Cyclohexane
 Concen: 1.406 ug/l
 RT: 7.973 min Scan# 1029
 Delta R.T. -0.012 min
 Lab File: VD070379.D
 Acq: 20 Sep 2021 12:54

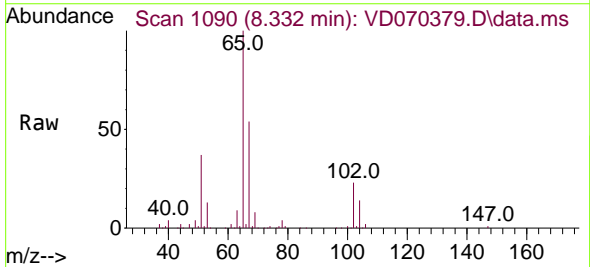
Instrument :
 MSVOA_D
 ClientSampled :
 CL-01-091721



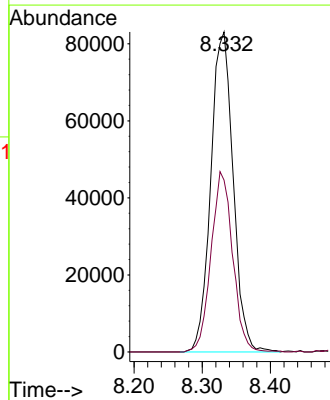
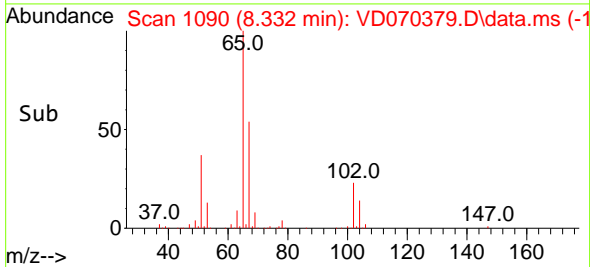
Tgt Ion: 56 Resp: 10009
 Ion Ratio Lower Upper
 56 100
 69 157.6 26.9 40.3#
 84 116.6 73.6 110.4#

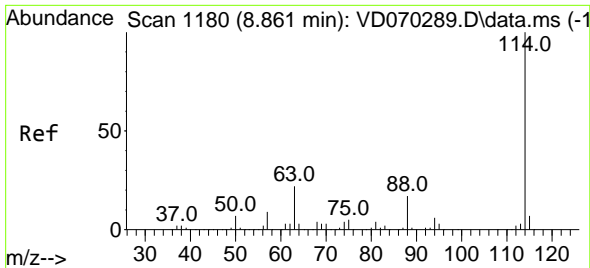


#33
 1,2-Dichloroethane-d4
 Concen: 45.882 ug/l
 RT: 8.332 min Scan# 1090
 Delta R.T. 0.006 min
 Lab File: VD070379.D
 Acq: 20 Sep 2021 12:54



Tgt Ion: 65 Resp: 189674
 Ion Ratio Lower Upper
 65 100
 67 54.5 0.0 111.4

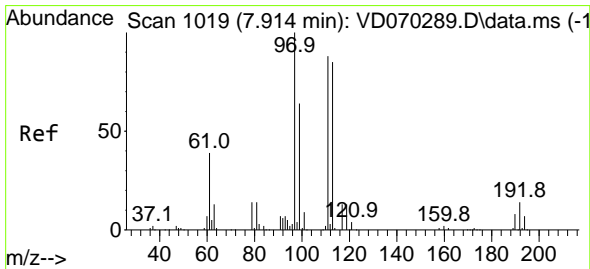
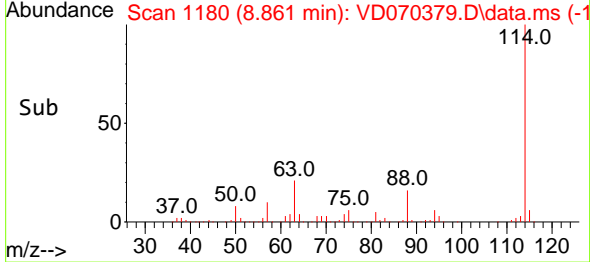
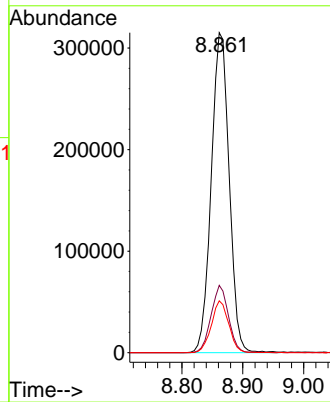
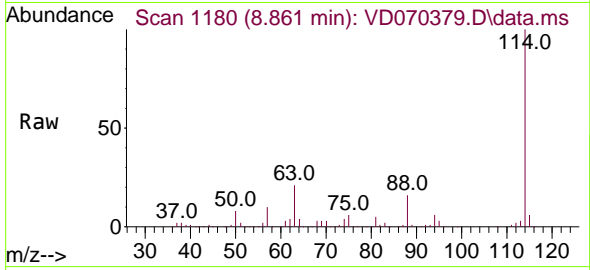




#34
 1,4-Difluorobenzene
 Concen: 50.000 ug/l
 RT: 8.861 min Scan# 1180
 Delta R.T. -0.000 min
 Lab File: VD070379.D
 Acq: 20 Sep 2021 12:54

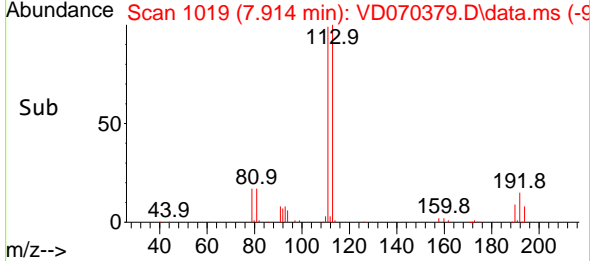
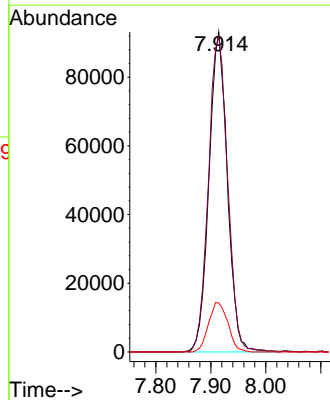
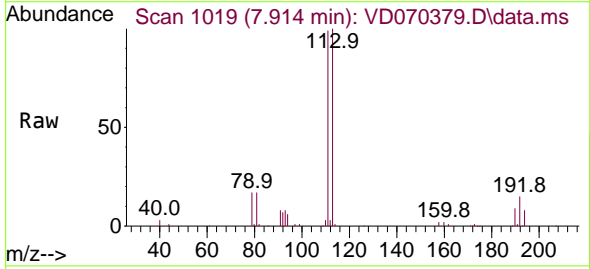
Instrument :
 MSVOA_D
 ClientSampleID :
 CL-01-091721

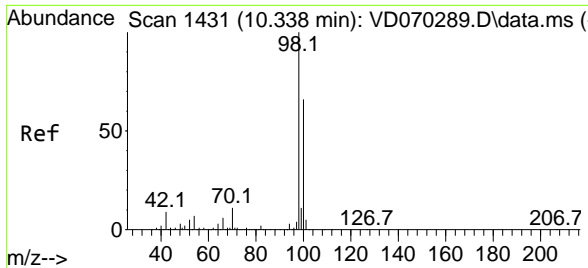
Tgt Ion	Resp	Lower	Upper
114	100		
63	21.1	0.0	43.4
88	16.2	0.0	33.4



#35
 Dibromofluoromethane
 Concen: 47.275 ug/l
 RT: 7.914 min Scan# 1019
 Delta R.T. -0.000 min
 Lab File: VD070379.D
 Acq: 20 Sep 2021 12:54

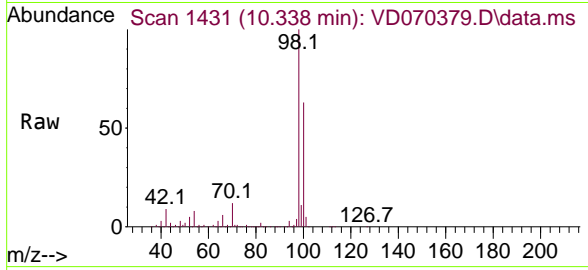
Tgt Ion	Resp	Lower	Upper
113	100		
111	103.1	81.4	122.2
192	16.2	13.0	19.6



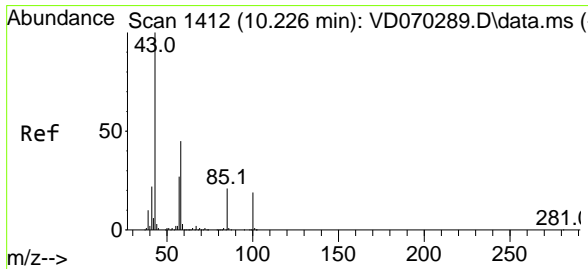
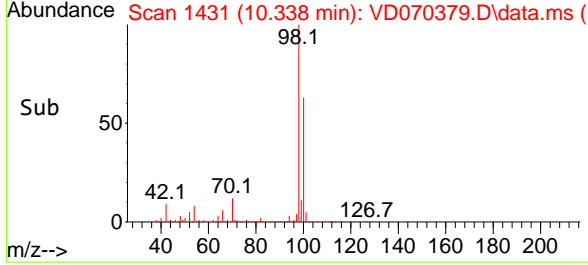
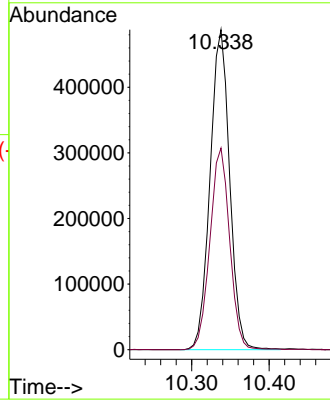


#50
 Toluene-d8
 Concen: 51.378 ug/l
 RT: 10.338 min Scan# 1431
 Delta R.T. -0.000 min
 Lab File: VD070379.D
 Acq: 20 Sep 2021 12:54

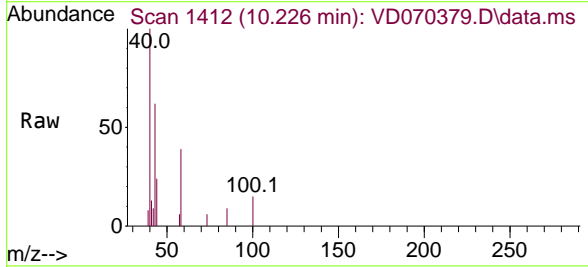
Instrument :
 MSVOA_D
 ClientSampled :
 CL-01-091721



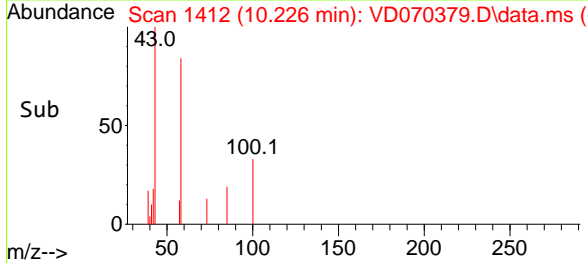
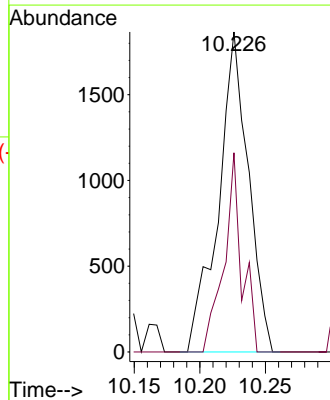
Tgt Ion: 98 Resp: 854833
 Ion Ratio Lower Upper
 98 100
 100 63.6 52.0 78.0

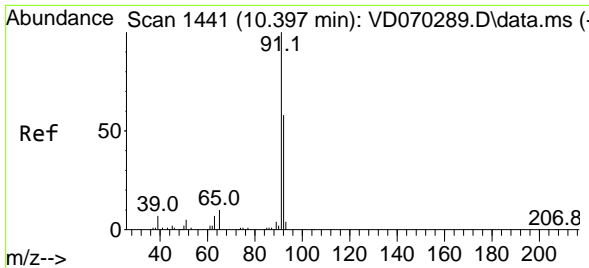


#51
 4-Methyl-2-Pentanone
 Concen: 1.204 ug/l
 RT: 10.226 min Scan# 1412
 Delta R.T. -0.000 min
 Lab File: VD070379.D
 Acq: 20 Sep 2021 12:54



Tgt Ion: 43 Resp: 2965
 Ion Ratio Lower Upper
 43 100
 58 36.9 35.4 53.2

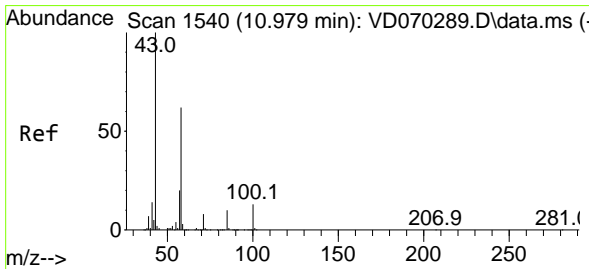
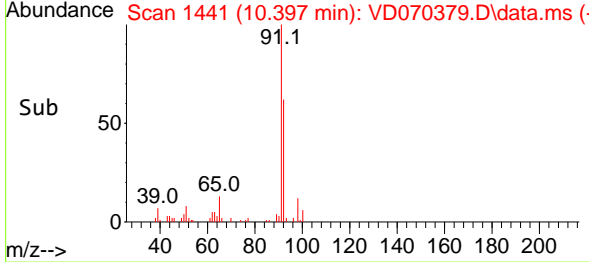
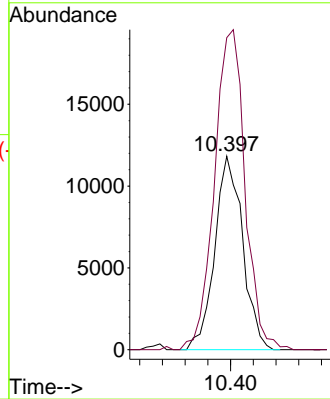
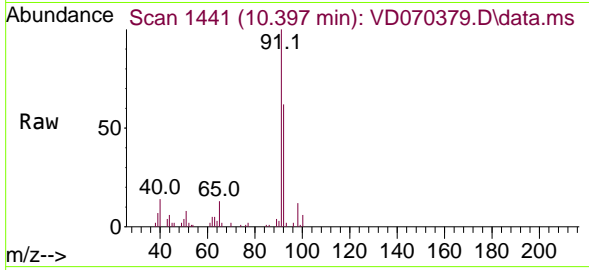




#52
 Toluene
 Concen: 1.656 ug/l
 RT: 10.397 min Scan# 1441
 Delta R.T. -0.000 min
 Lab File: VD070379.D
 Acq: 20 Sep 2021 12:54

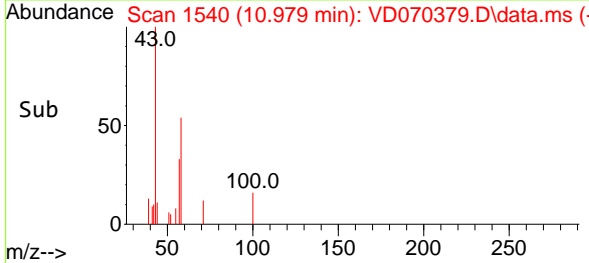
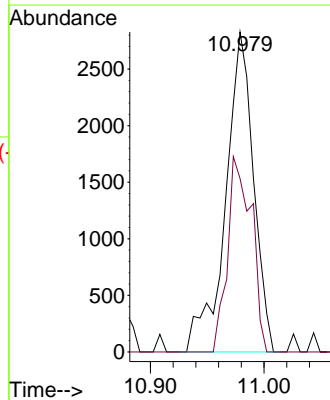
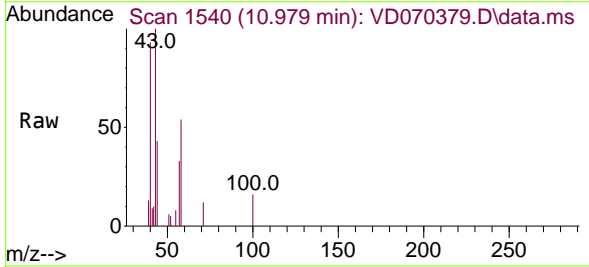
Instrument :
 MSVOA_D
 ClientSampled :
 CL-01-091721

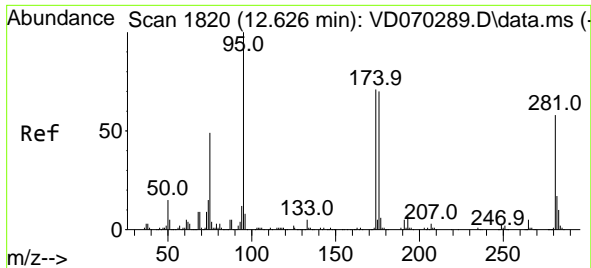
Tgt Ion: 92 Resp: 20183
 Ion Ratio Lower Upper
 92 100
 91 181.4 136.2 204.2



#59
 2-Hexanone
 Concen: 2.949 ug/l
 RT: 10.979 min Scan# 1540
 Delta R.T. -0.000 min
 Lab File: VD070379.D
 Acq: 20 Sep 2021 12:54

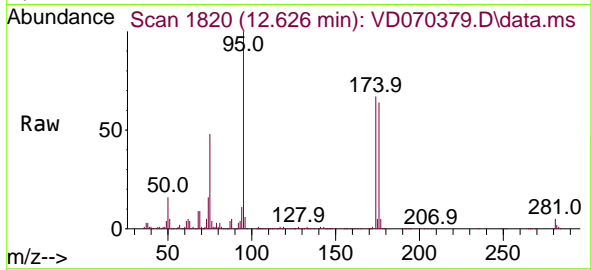
Tgt Ion: 43 Resp: 4844
 Ion Ratio Lower Upper
 43 100
 58 52.1 30.6 91.6



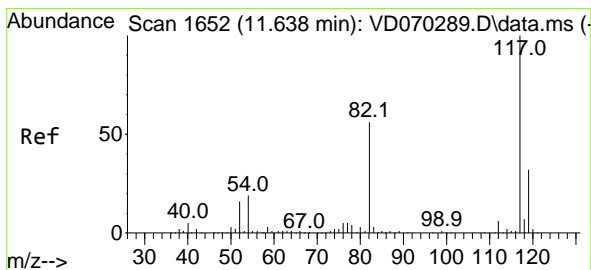
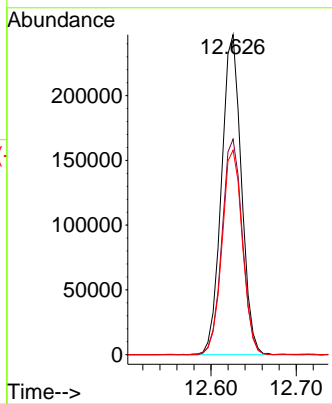
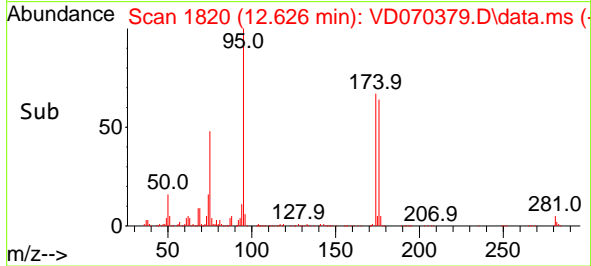


#62
 4-Bromofluorobenzene
 Concen: 68.861 ug/l
 RT: 12.626 min Scan# 1820
 Delta R.T. -0.000 min
 Lab File: VD070379.D
 Acq: 20 Sep 2021 12:54

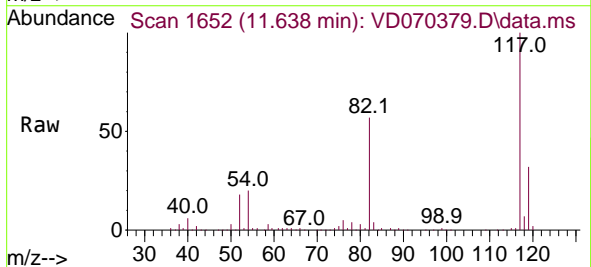
Instrument :
 MSVOA_D
ClientSampled :
 CL-01-091721



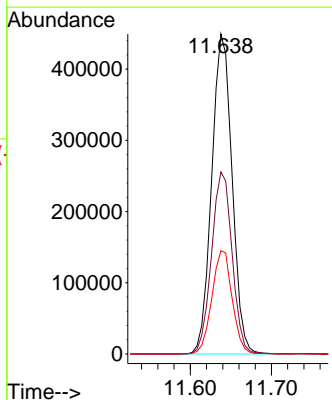
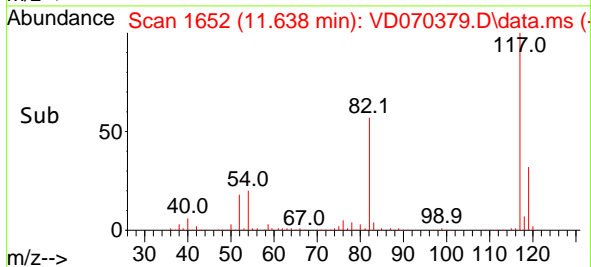
Tgt Ion: 95 Resp: 400414
 Ion Ratio Lower Upper
 95 100
 174 68.7 0.0 140.6
 176 65.5 0.0 137.4

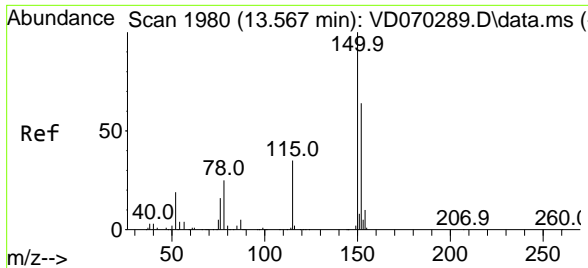


#63
 Chlorobenzene-d5
 Concen: 50.000 ug/l
 RT: 11.638 min Scan# 1652
 Delta R.T. -0.000 min
 Lab File: VD070379.D
 Acq: 20 Sep 2021 12:54



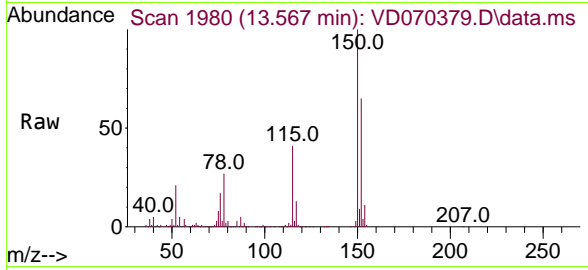
Tgt Ion: 117 Resp: 783340
 Ion Ratio Lower Upper
 117 100
 82 56.9 45.0 67.4
 119 32.2 25.2 37.8





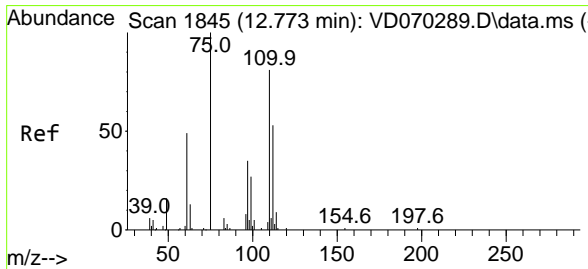
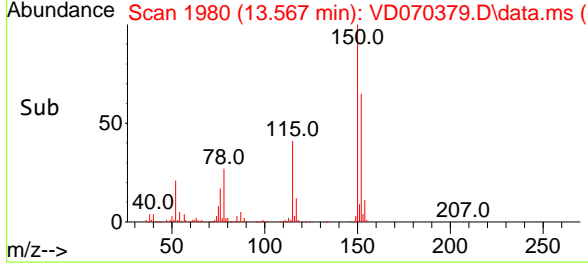
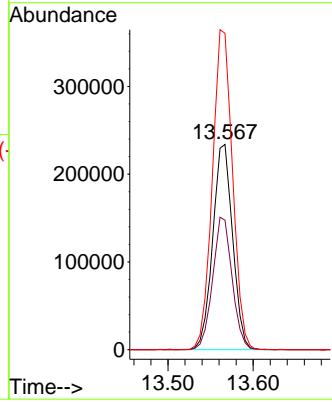
#72
 1,4-Dichlorobenzene-d4
 Concen: 50.000 ug/l
 RT: 13.567 min Scan# 1980
 Delta R.T. -0.000 min
 Lab File: VD070379.D
 Acq: 20 Sep 2021 12:54

Instrument :
 MSVOA_D
ClientSampleId :
 CL-01-091721

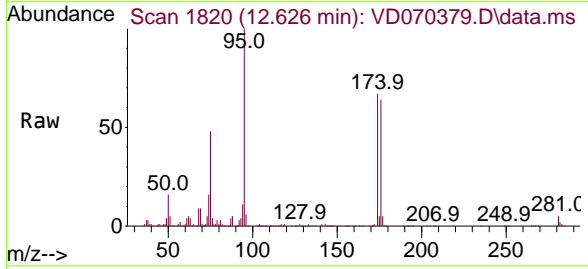


Tgt Ion:152 Resp: 379113

Ion	Ratio	Lower	Upper
152	100		
115	63.3	32.1	96.3
150	158.0	0.0	350.6

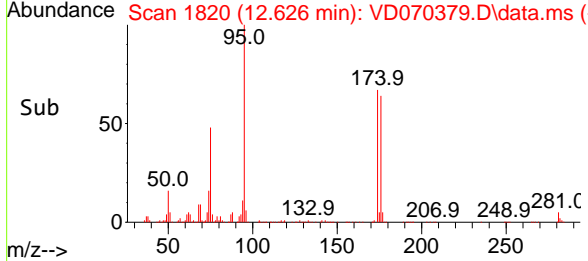
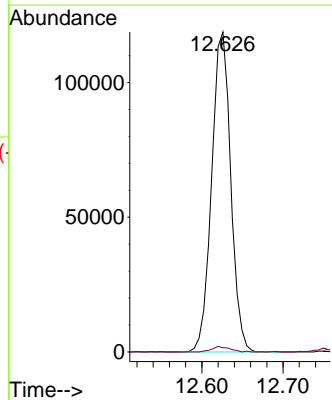


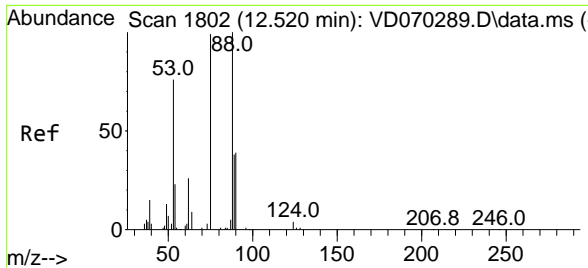
#76
 1,2,3-Trichloropropane
 Concen: 50.512 ug/l
 RT: 12.626 min Scan# 1820
 Delta R.T. -0.147 min
 Lab File: VD070379.D
 Acq: 20 Sep 2021 12:54



Tgt Ion: 75 Resp: 193702

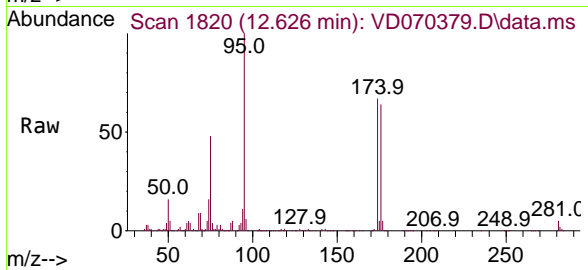
Ion	Ratio	Lower	Upper
75	100		
77	1.6	174.9	524.7#





#81
 trans-1,4-Dichloro-2-butene
 Concen: 126.562 ug/l
 RT: 12.626 min Scan# 1820
 Delta R.T. 0.106 min
 Lab File: VD070379.D
 Acq: 20 Sep 2021 12:54

Instrument :
 MSVOA_D
ClientSampled :
 CL-01-091721



Tgt Ion: 75 Resp: 193702

Ion	Ratio	Lower	Upper
75	100		
53	0.4	64.2	96.2#
89	0.0	35.6	53.4#

