

Data Path : Z:\voasrv\HPCHEM1\MSVOA\_D\Data\VD092121\  
 Data File : VD070407.D  
 Acq On : 21 Sep 2021 16:35  
 Operator : VA/SY  
 Sample : M3832-01  
 Misc : 5.02G/5.00ml/MSVOA\_D/SOIL  
 ALS Vial : 13 Sample Multiplier: 1

Instrument :  
 MSVOA\_D  
 ClientSampled :  
 TP-B

Quant Time: Sep 22 01:48:21 2021  
 Quant Method : Z:\voasrv\HPCHEM1\MSVOA\_D\Method\82D090821S.M  
 Quant Title : SW846 8260  
 QLast Update : Thu Sep 09 03:07:09 2021  
 Response via : Initial Calibration

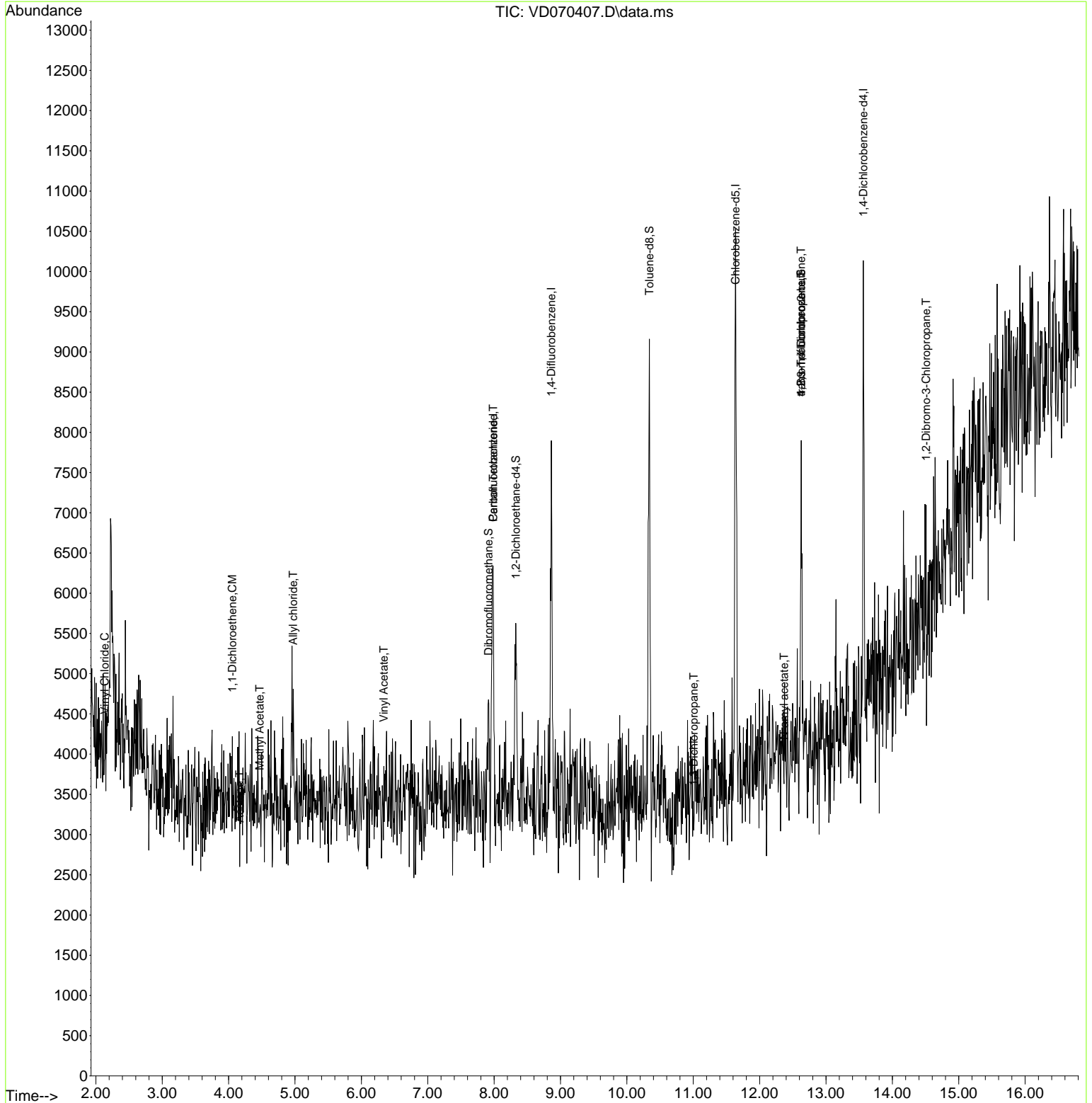
Compound	R.T.	QIon	Response	Conc	Units	Dev(Min)
-----						
Internal Standards						
1) Pentafluorobenzene	7.985	168	2661	50.000	ug/l	# 0.00
34) 1,4-Difluorobenzene	8.861	114	3952	50.000	ug/l	0.00
63) Chlorobenzene-d5	11.638	117	4655	50.000	ug/l	# 0.00
72) 1,4-Dichlorobenzene-d4	13.561	152	1505	50.000	ug/l	0.00
System Monitoring Compounds						
33) 1,2-Dichloroethane-d4	8.326	65	1748	51.159	ug/l	0.00
Spiked Amount	50.000	Range	50 - 163	Recovery	=	102.320%
35) Dibromofluoromethane	7.914	113	996	35.406	ug/l	0.00
Spiked Amount	50.000	Range	54 - 147	Recovery	=	70.820%
50) Toluene-d8	10.338	98	4075	39.898	ug/l	0.00
Spiked Amount	50.000	Range	49 - 140	Recovery	=	79.800%
62) 4-Bromofluorobenzene	12.626	95	1549	43.395	ug/l	0.00
Spiked Amount	50.000	Range	25 - 144	Recovery	=	86.800%
Target Compounds						
						Qvalue
4) Vinyl Chloride	2.132	62	55	1.314	ug/l	# 44
6) Chloroethane	2.644	64	59	Below Cal		# 43
12) 1,1-Dichloroethene	4.056	96	68	2.195	ug/l	# 1
14) Allyl chloride	4.973	41	55	1.208	ug/l	# 27
16) Acetone	4.168	43	64	10.492	ug/l	# 36
18) Methyl Acetate	4.467	43	72	2.873	ug/l	# 48
20) Methylene Chloride	4.991	84	181	Below Cal		# 9
23) Vinyl Acetate	6.338	43	77	1.706	ug/l	# 68
38) Carbon Tetrachloride	7.985	117	137	3.279	ug/l	# 12
57) 1,3-Dichloropropane	11.008	76	58	1.481	ug/l	# 42
74) N-amyl acetate	12.367	43	63	2.740	ug/l	# 37
76) 1,2,3-Trichloropropane	12.626	75	756	49.661	ug/l	# 1
81) trans-1,4-Dichloro-2-b...	12.626	75	756	124.430	ug/l	# 17
92) 1,2-Dibromo-3-Chloropr...	14.508	75	55	16.246	ug/l	# 5
-----						

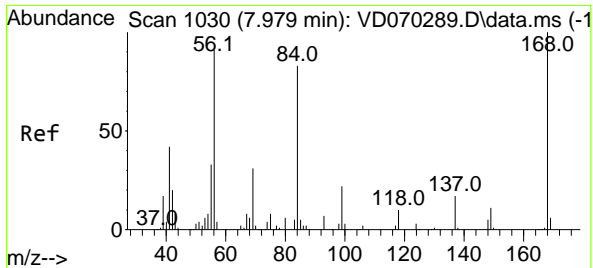
(#) = qualifier out of range (m) = manual integration (+) = signals summed

Data Path : Z:\voasrv\HPCHEM1\MSVOA\_D\Data\VD092121\  
 Data File : VD070407.D  
 Acq On : 21 Sep 2021 16:35  
 Operator : VA/SY  
 Sample : M3832-01  
 Misc : 5.02G/5.00ml/MSVOA\_D/SOIL  
 ALS Vial : 13 Sample Multiplier: 1

Instrument :  
 MSVOA\_D  
 Client Sampled :  
 TP-B

Quant Time: Sep 22 01:48:21 2021  
 Quant Method : Z:\voasrv\HPCHEM1\MSVOA\_D\Method\82D090821S.M  
 Quant Title : SW846 8260  
 QLast Update : Thu Sep 09 03:07:09 2021  
 Response via : Initial Calibration

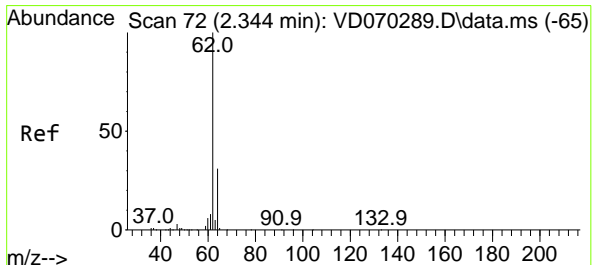
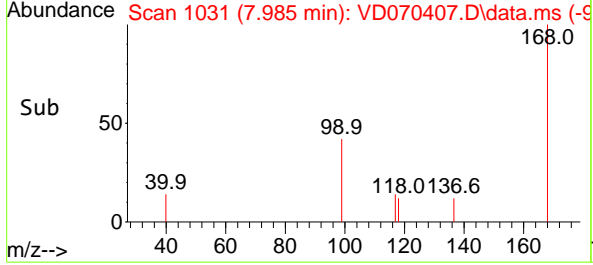
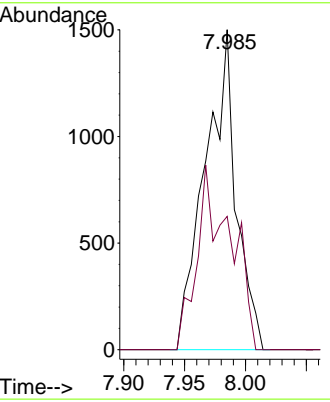
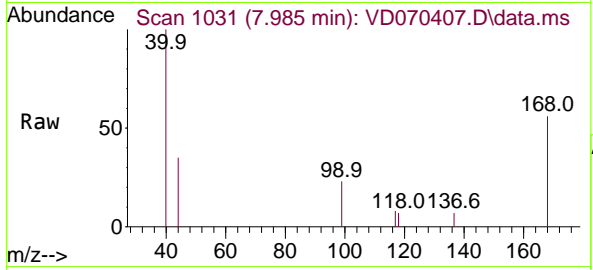




#1  
 Pentafluorobenzene  
 Concen: 50.000 ug/l  
 RT: 7.985 min Scan# 1031  
 Delta R.T. 0.006 min  
 Lab File: VD070407.D  
 Acq: 21 Sep 2021 16:35

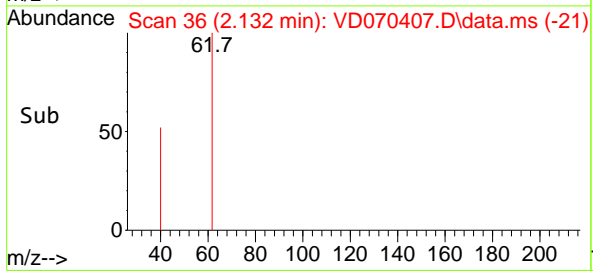
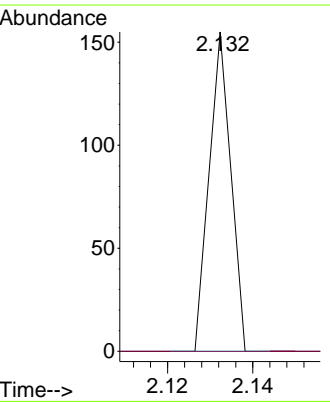
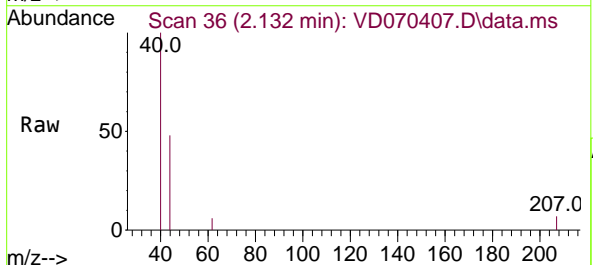
Instrument :  
 MSVOA\_D  
 ClientSampled :  
 TP-B

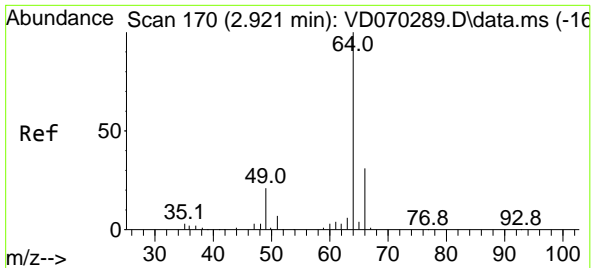
Tgt Ion:168 Resp: 2661  
 Ion Ratio Lower Upper  
 168 100  
 99 41.6 50.8 76.2#



#4  
 Vinyl Chloride  
 Concen: 1.314 ug/l  
 RT: 2.132 min Scan# 36  
 Delta R.T. -0.212 min  
 Lab File: VD070407.D  
 Acq: 21 Sep 2021 16:35

Tgt Ion: 62 Resp: 55  
 Ion Ratio Lower Upper  
 62 100  
 64 0.0 24.6 36.8#

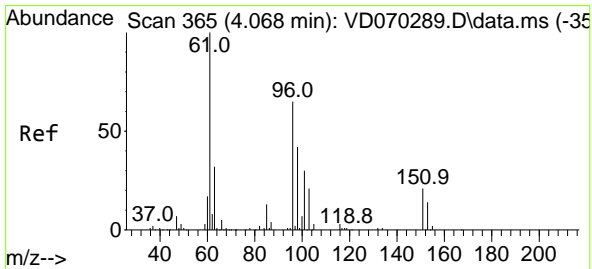
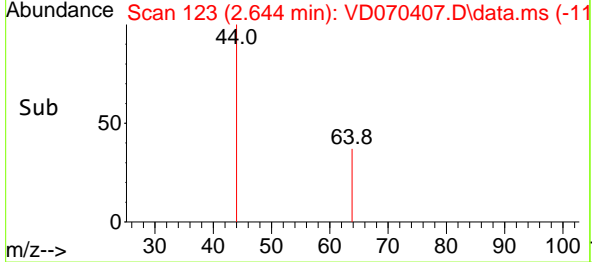
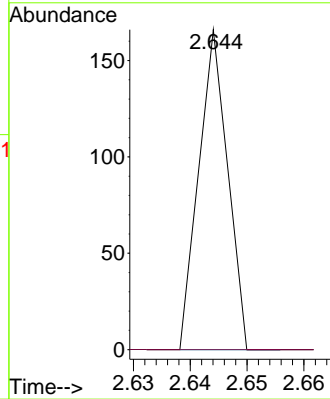
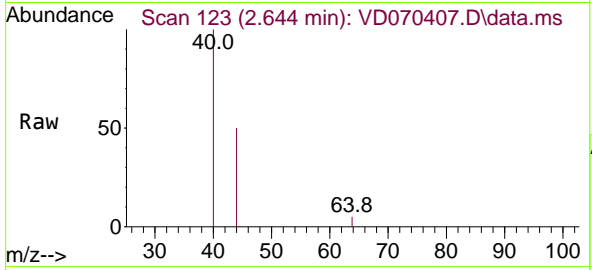




#6  
 Chloroethane  
 Concen: Below Cal  
 RT: 2.644 min Scan# 123  
 Delta R.T. -0.277 min  
 Lab File: VD070407.D  
 Acq: 21 Sep 2021 16:35

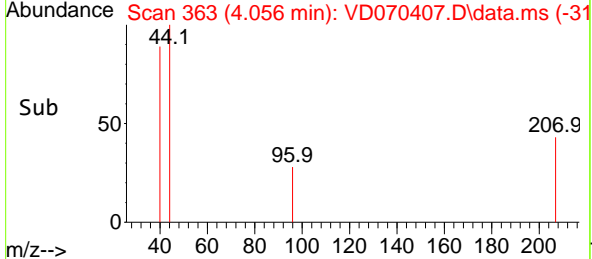
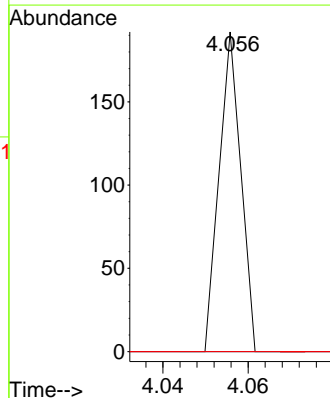
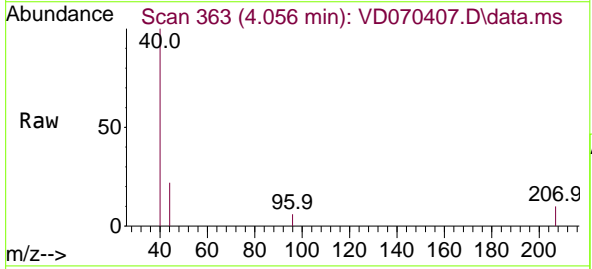
Instrument :  
 MSVOA\_D  
 ClientSampled :  
 TP-B

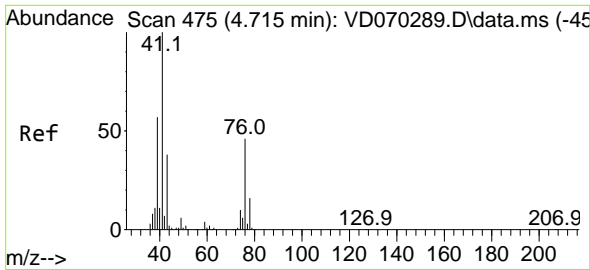
Tgt Ion: 64 Resp: 59  
 Ion Ratio Lower Upper  
 64 100  
 66 0.0 25.0 37.4#



#12  
 1,1-Dichloroethene  
 Concen: 2.195 ug/l  
 RT: 4.056 min Scan# 363  
 Delta R.T. -0.012 min  
 Lab File: VD070407.D  
 Acq: 21 Sep 2021 16:35

Tgt Ion: 96 Resp: 68  
 Ion Ratio Lower Upper  
 96 100  
 61 0.0 123.2 184.8#  
 98 0.0 51.9 77.9#

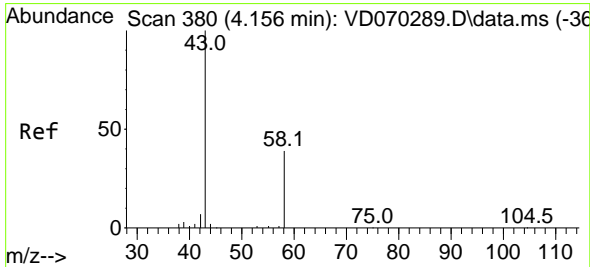
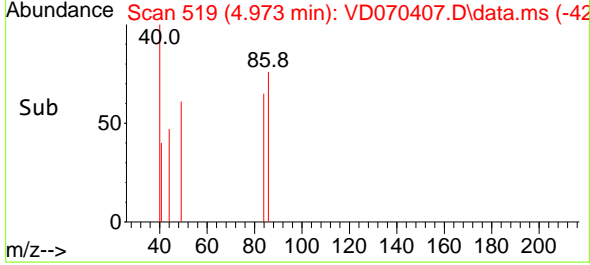
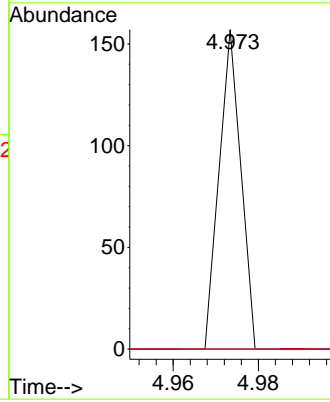
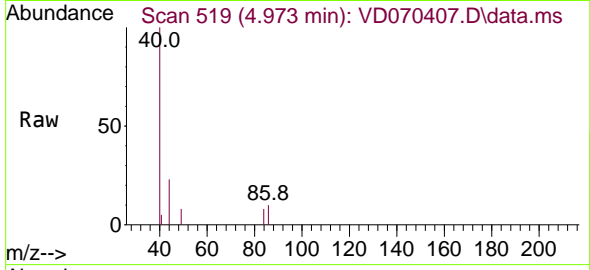




#14  
 Allyl chloride  
 Concen: 1.208 ug/l  
 RT: 4.973 min Scan# 519  
 Delta R.T. 0.259 min  
 Lab File: VD070407.D  
 Acq: 21 Sep 2021 16:35

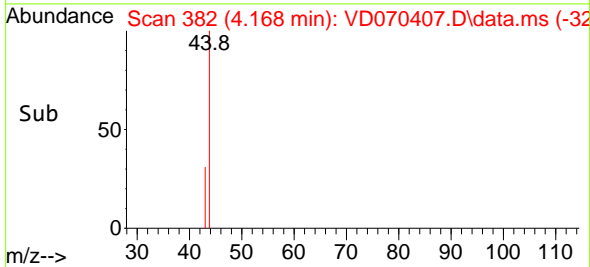
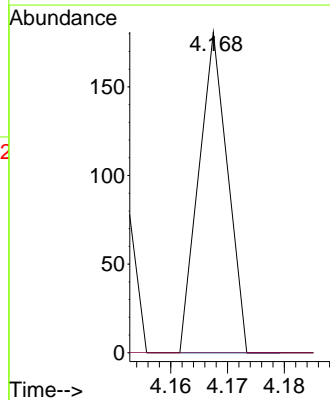
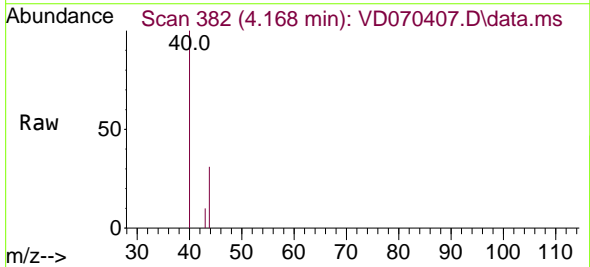
Instrument :  
 MSVOA\_D  
 ClientSampled :  
 TP-B

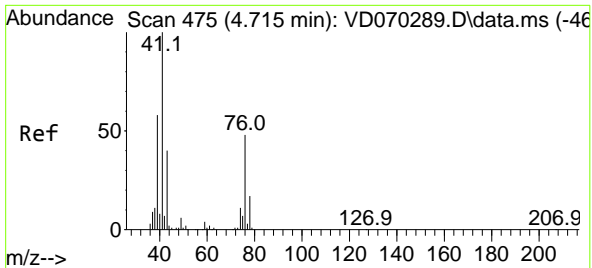
Tgt Ion: 41 Resp: 55  
 Ion Ratio Lower Upper  
 41 100  
 39 0.0 46.2 69.4#  
 76 0.0 34.1 51.1#



#16  
 Acetone  
 Concen: 10.492 ug/l  
 RT: 4.168 min Scan# 382  
 Delta R.T. 0.012 min  
 Lab File: VD070407.D  
 Acq: 21 Sep 2021 16:35

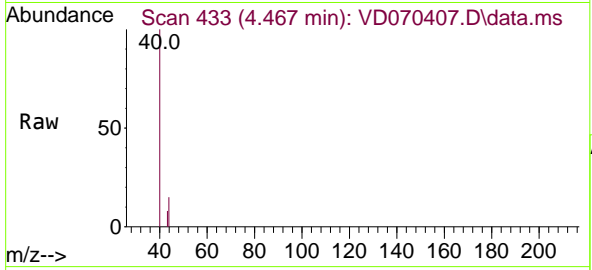
Tgt Ion: 43 Resp: 64  
 Ion Ratio Lower Upper  
 43 100  
 58 0.0 30.9 46.3#



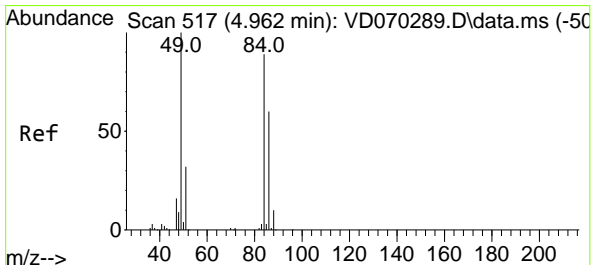
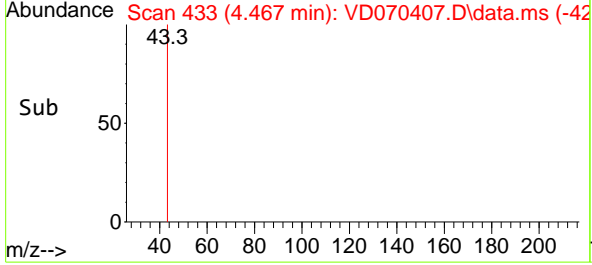
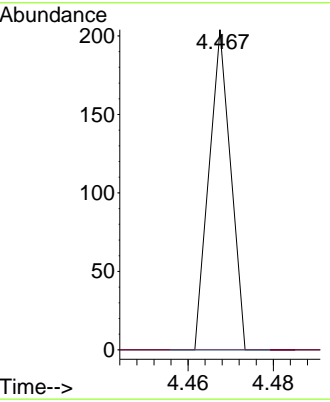


#18  
 Methyl Acetate  
 Concen: 2.873 ug/l  
 RT: 4.467 min Scan# 433  
 Delta R.T. -0.248 min  
 Lab File: VD070407.D  
 Acq: 21 Sep 2021 16:35

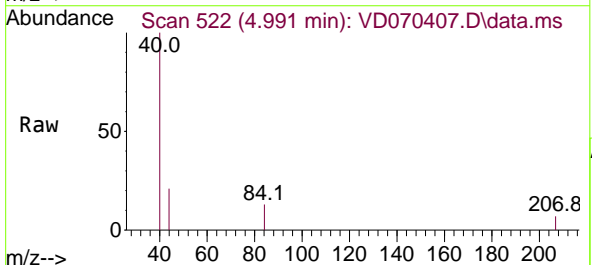
Instrument :  
 MSVOA\_D  
 ClientSampled :  
 TP-B



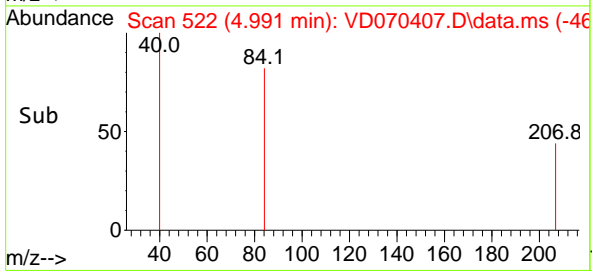
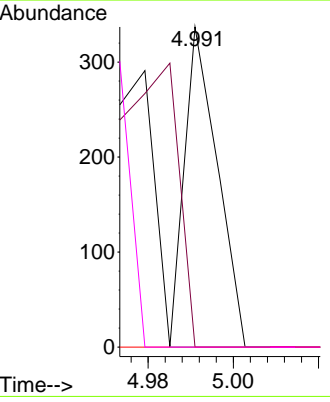
Tgt Ion: 43 Resp: 72  
 Ion Ratio Lower Upper  
 43 100  
 74 0.0 21.6 32.4#

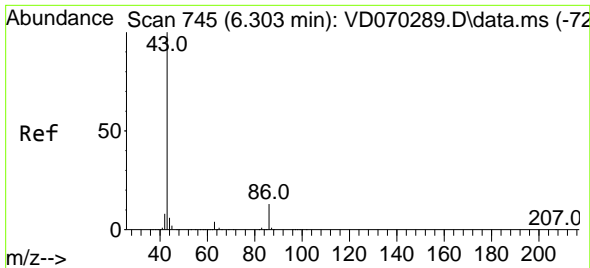


#20  
 Methylene Chloride  
 Concen: Below Cal  
 RT: 4.991 min Scan# 522  
 Delta R.T. 0.029 min  
 Lab File: VD070407.D  
 Acq: 21 Sep 2021 16:35



Tgt Ion: 84 Resp: 181  
 Ion Ratio Lower Upper  
 84 100  
 49 0.0 89.6 134.4#  
 51 0.0 28.6 43.0#  
 86 0.0 53.5 80.3#

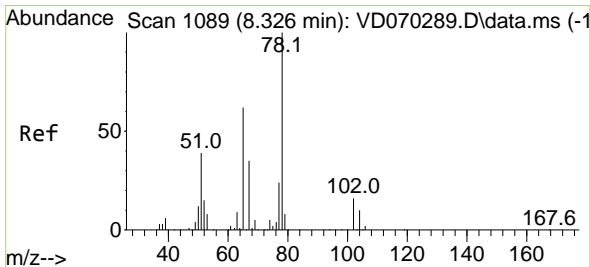
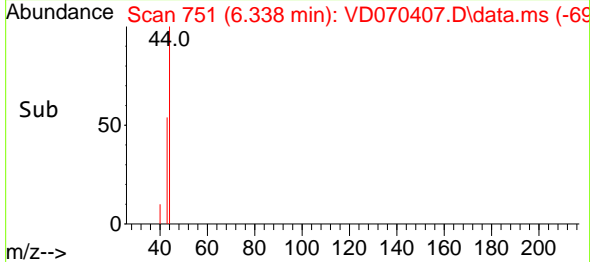
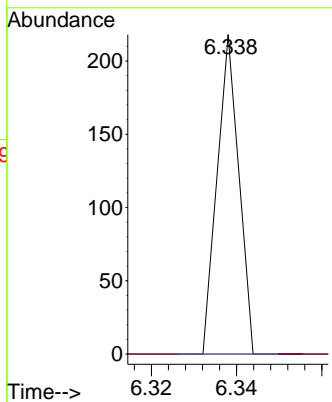
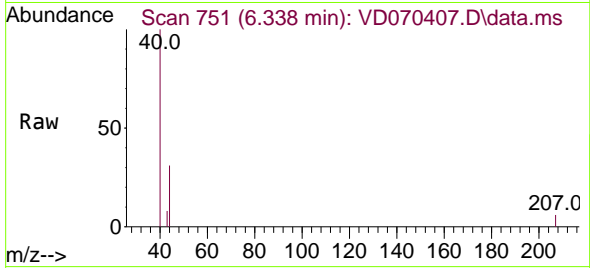




#23  
 Vinyl Acetate  
 Concen: 1.706 ug/l  
 RT: 6.338 min Scan# 751  
 Delta R.T. 0.035 min  
 Lab File: VD070407.D  
 Acq: 21 Sep 2021 16:35

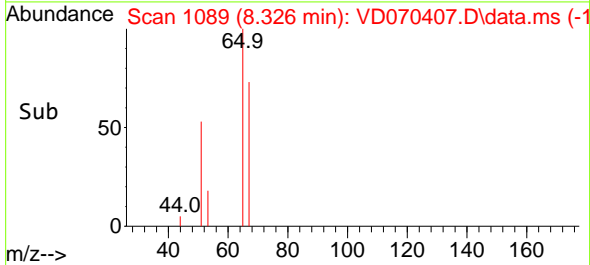
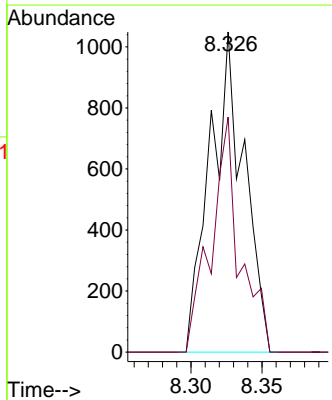
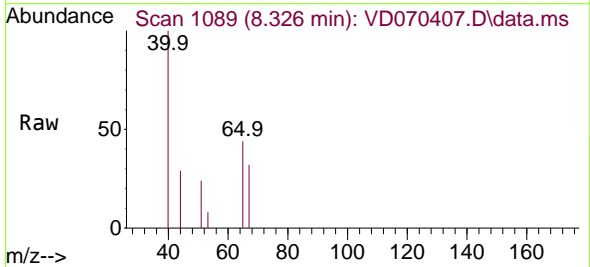
Instrument :  
 MSVOA\_D  
 ClientSampled :  
 TP-B

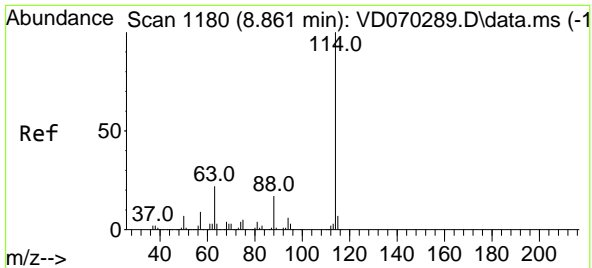
Tgt Ion: 43 Resp: 77  
 Ion Ratio Lower Upper  
 43 100  
 86 0.0 10.2 15.4#



#33  
 1,2-Dichloroethane-d4  
 Concen: 51.159 ug/l  
 RT: 8.326 min Scan# 1089  
 Delta R.T. -0.000 min  
 Lab File: VD070407.D  
 Acq: 21 Sep 2021 16:35

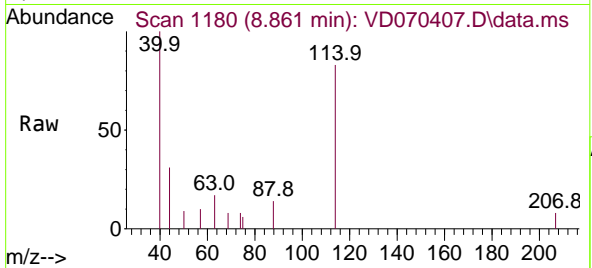
Tgt Ion: 65 Resp: 1748  
 Ion Ratio Lower Upper  
 65 100  
 67 61.7 0.0 111.4



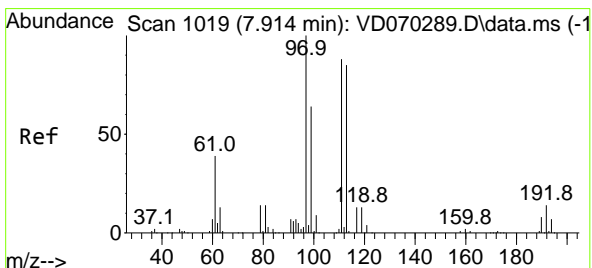
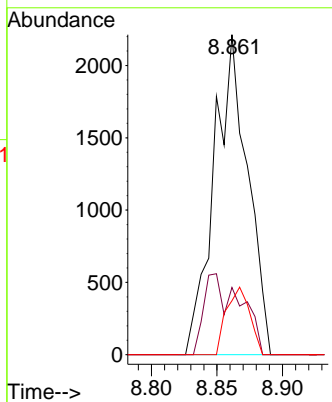
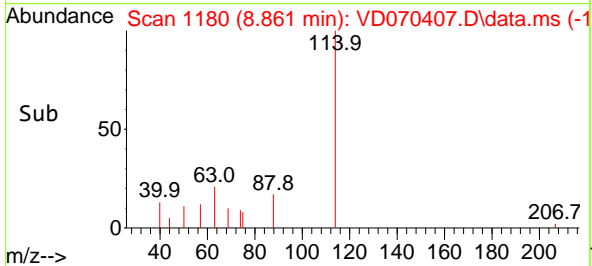


#34  
 1,4-Difluorobenzene  
 Concen: 50.000 ug/l  
 RT: 8.861 min Scan# 1180  
 Delta R.T. -0.000 min  
 Lab File: VD070407.D  
 Acq: 21 Sep 2021 16:35

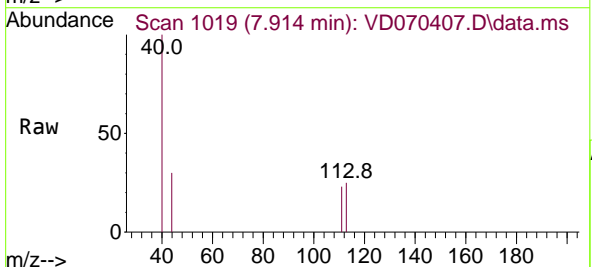
Instrument :  
 MSVOA\_D  
 ClientSampled :  
 TP-B



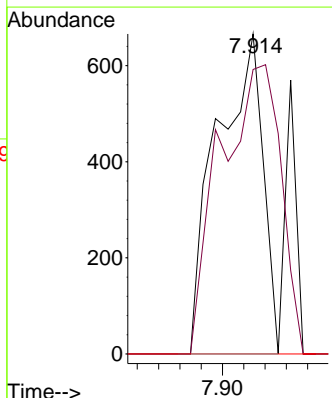
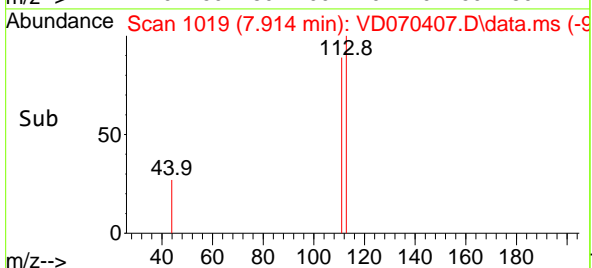
Tgt Ion	Resp	Lower	Upper
114	100		
63	21.0	0.0	43.4
88	16.9	0.0	33.4



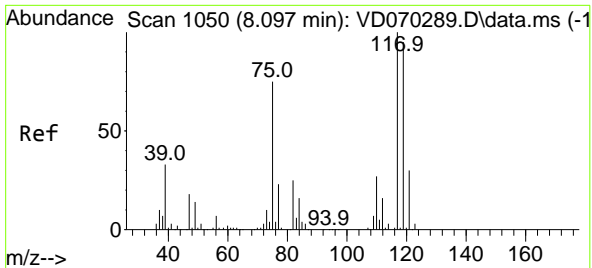
#35  
 Dibromofluoromethane  
 Concen: 35.406 ug/l  
 RT: 7.914 min Scan# 1019  
 Delta R.T. -0.000 min  
 Lab File: VD070407.D  
 Acq: 21 Sep 2021 16:35



Tgt Ion	Resp	Lower	Upper
113	100		
111	119.4	81.4	122.2
192	0.0	13.0	19.6#



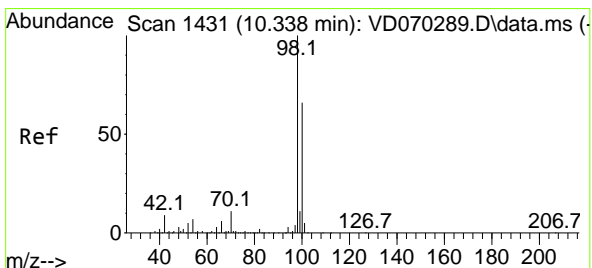
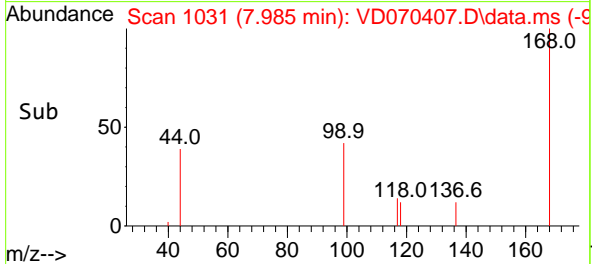
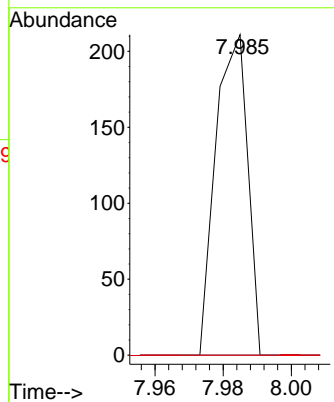
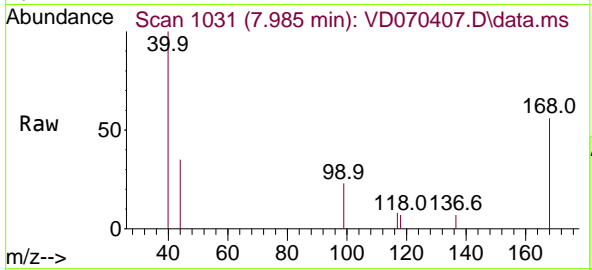




#38  
 Carbon Tetrachloride  
 Concen: 3.279 ug/l  
 RT: 7.985 min Scan# 1031  
 Delta R.T. -0.112 min  
 Lab File: VD070407.D  
 Acq: 21 Sep 2021 16:35

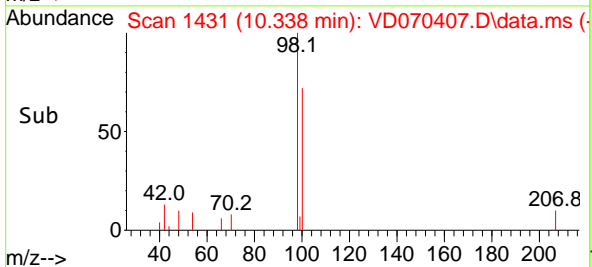
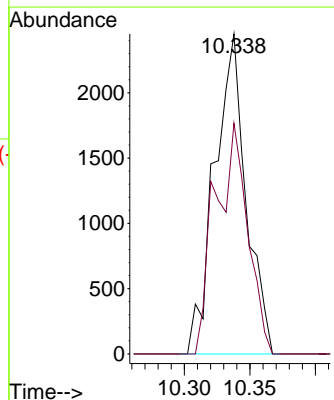
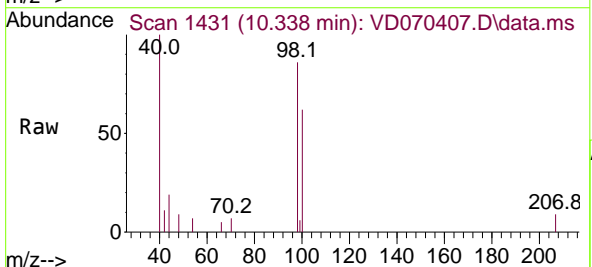
Instrument :  
 MSVOA\_D  
 ClientSampled :  
 TP-B

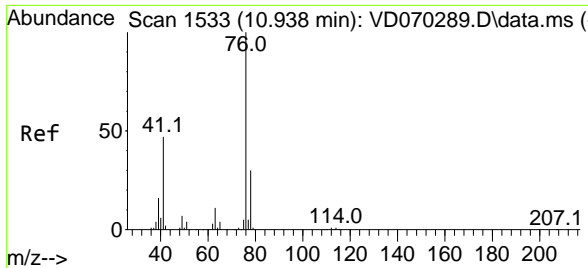
Tgt Ion:117 Resp: 137  
 Ion Ratio Lower Upper  
 117 100  
 119 0.0 76.1 114.1#  
 121 0.0 23.8 35.6#



#50  
 Toluene-d8  
 Concen: 39.898 ug/l  
 RT: 10.338 min Scan# 1431  
 Delta R.T. -0.000 min  
 Lab File: VD070407.D  
 Acq: 21 Sep 2021 16:35

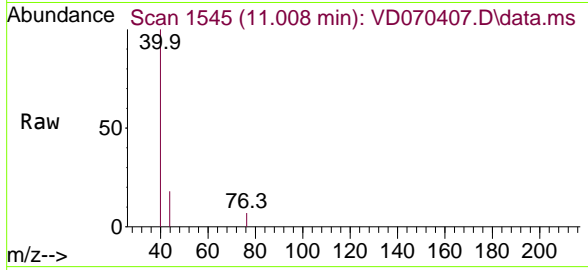
Tgt Ion: 98 Resp: 4075  
 Ion Ratio Lower Upper  
 98 100  
 100 74.5 52.0 78.0



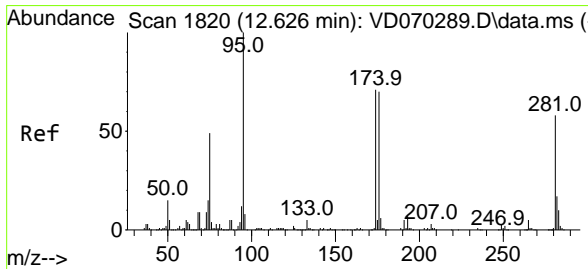
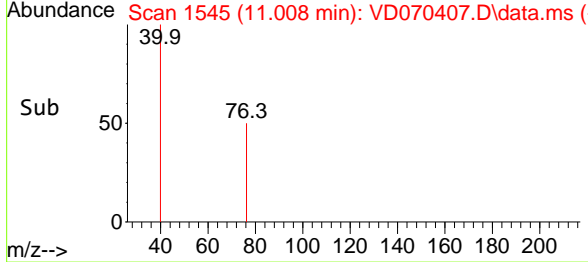
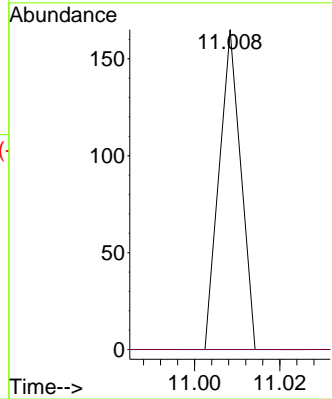


#57  
 1,3-Dichloropropane  
 Concen: 1.481 ug/l  
 RT: 11.008 min Scan# 1545  
 Delta R.T. 0.071 min  
 Lab File: VD070407.D  
 Acq: 21 Sep 2021 16:35

Instrument : MSVOA\_D  
 ClientSampled : TP-B

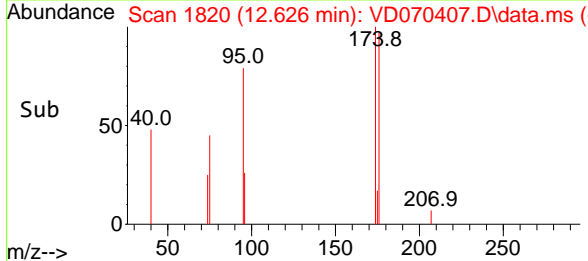
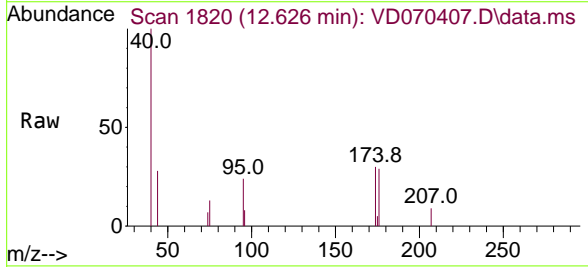
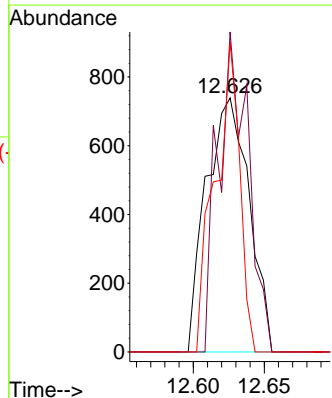


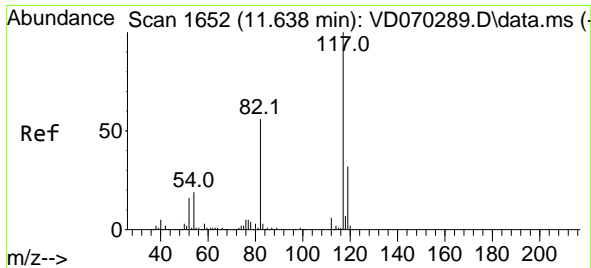
Tgt Ion: 76 Resp: 58  
 Ion Ratio Lower Upper  
 76 100  
 78 0.0 25.8 38.8#



#62  
 4-Bromofluorobenzene  
 Concen: 43.395 ug/l  
 RT: 12.626 min Scan# 1820  
 Delta R.T. -0.000 min  
 Lab File: VD070407.D  
 Acq: 21 Sep 2021 16:35

Tgt Ion: 95 Resp: 1549  
 Ion Ratio Lower Upper  
 95 100  
 174 88.5 0.0 140.6  
 176 70.1 0.0 137.4

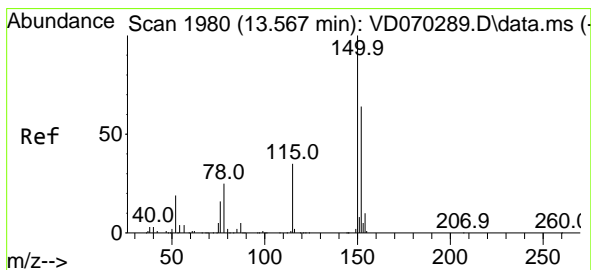
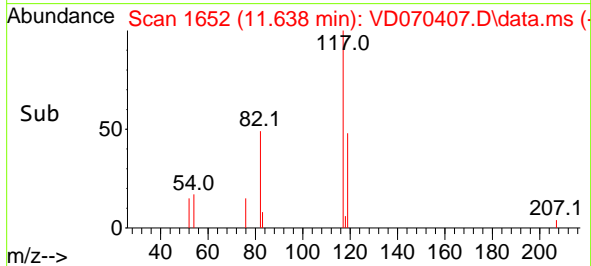
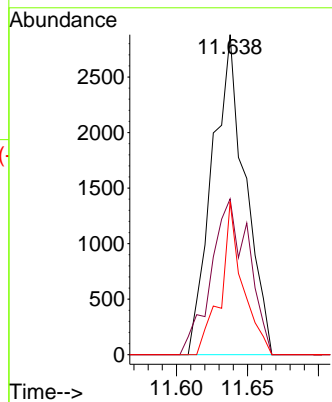
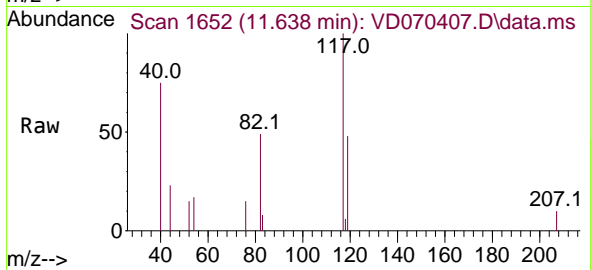




#63  
 Chlorobenzene-d5  
 Concen: 50.000 ug/l  
 RT: 11.638 min Scan# 1652  
 Delta R.T. -0.000 min  
 Lab File: VD070407.D  
 Acq: 21 Sep 2021 16:35

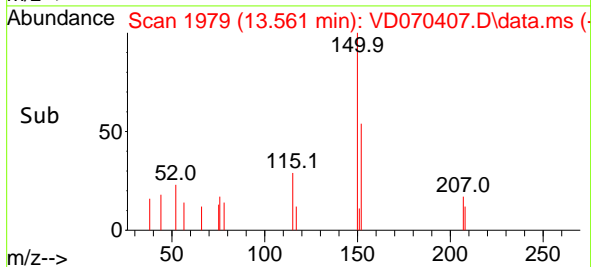
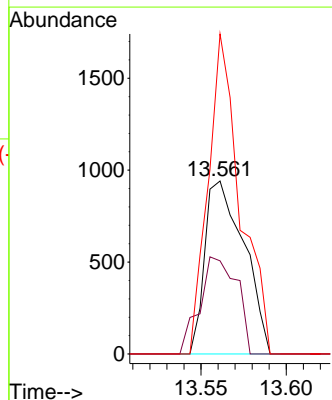
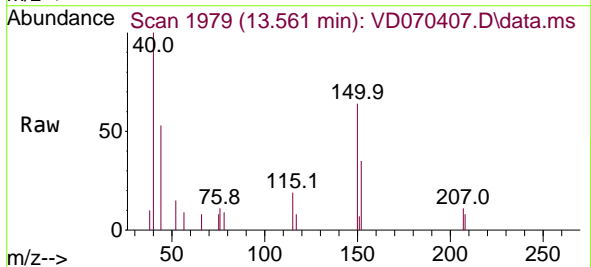
Instrument :  
 MSVOA\_D  
 ClientSampled :  
 TP-B

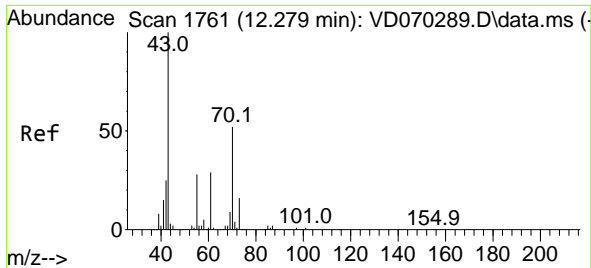
Tgt Ion	Resp	Lower	Upper
117	100		
82	48.7	45.0	67.4
119	47.8	25.2	37.8#



#72  
 1,4-Dichlorobenzene-d4  
 Concen: 50.000 ug/l  
 RT: 13.561 min Scan# 1979  
 Delta R.T. -0.006 min  
 Lab File: VD070407.D  
 Acq: 21 Sep 2021 16:35

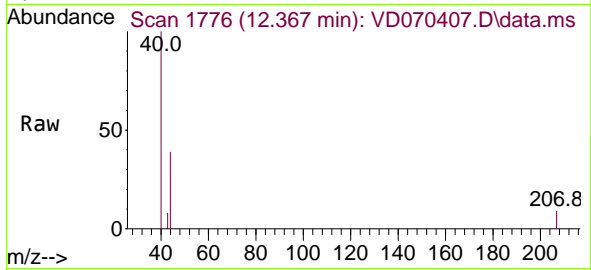
Tgt Ion	Resp	Lower	Upper
152	100		
115	53.1	32.1	96.3
150	151.4	0.0	350.6



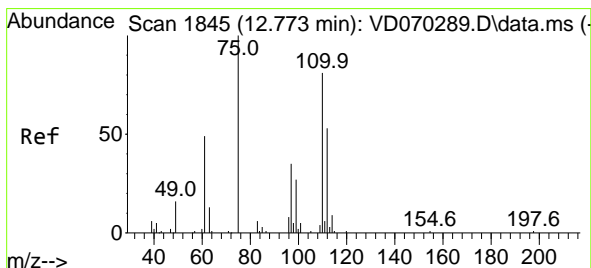
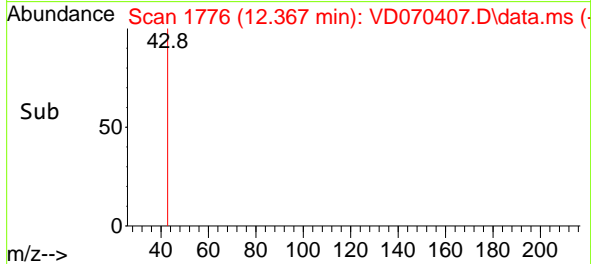
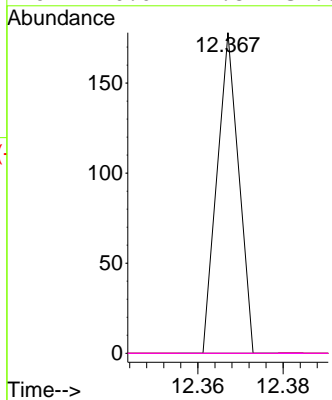


#74  
 N-amy1 acetate  
 Concen: 2.740 ug/l  
 RT: 12.367 min Scan# 1776  
 Delta R.T. 0.088 min  
 Lab File: VD070407.D  
 Acq: 21 Sep 2021 16:35

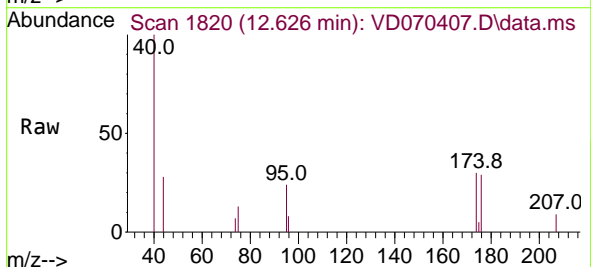
Instrument :  
 MSVOA\_D  
 ClientSampled :  
 TP-B



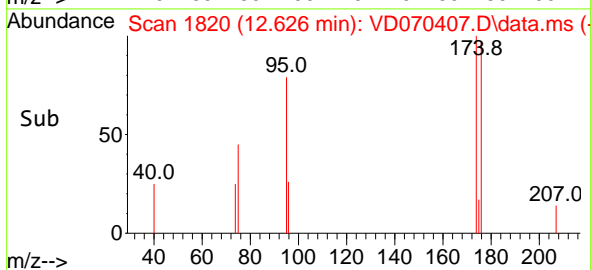
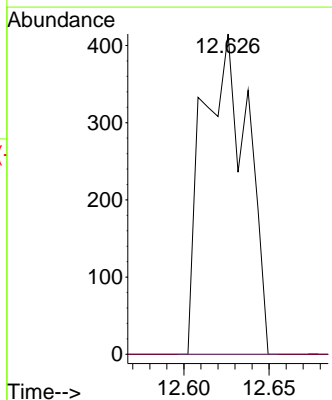
Tgt Ion	Resp	Lower	Upper
43	100		
70	0.0	41.4	62.0#
55	0.0	22.8	34.2#
61	0.0	21.8	32.6#

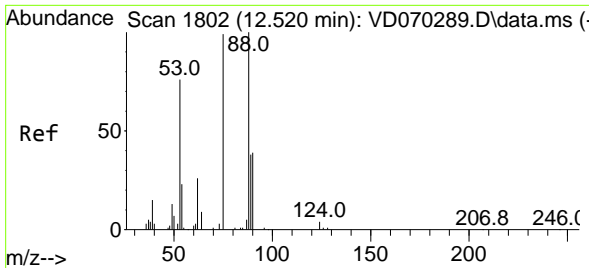


#76  
 1,2,3-Trichloropropane  
 Concen: 49.661 ug/l  
 RT: 12.626 min Scan# 1820  
 Delta R.T. -0.147 min  
 Lab File: VD070407.D  
 Acq: 21 Sep 2021 16:35



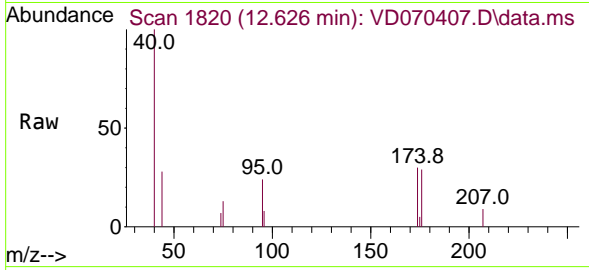
Tgt Ion	Resp	Lower	Upper
75	100		
77	0.0	174.9	524.7#



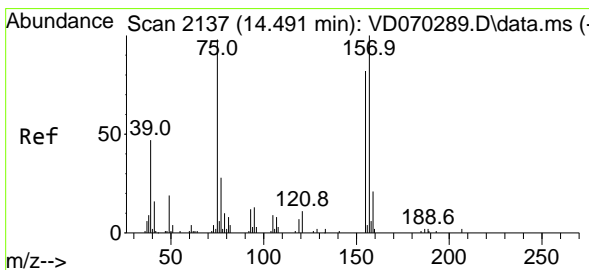
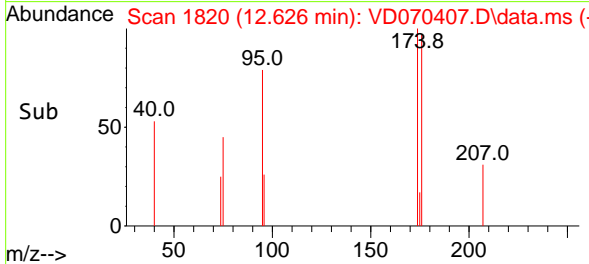
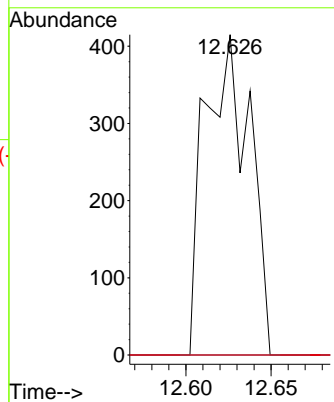


#81  
 trans-1,4-Dichloro-2-butene  
 Concen: 124.430 ug/l  
 RT: 12.626 min Scan# 1820  
 Delta R.T. 0.106 min  
 Lab File: VD070407.D  
 Acq: 21 Sep 2021 16:35

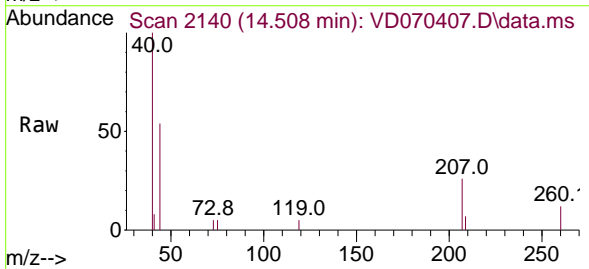
**Instrument :**  
 MSVOA\_D  
**ClientSampled :**  
 TP-B



Tgt Ion	Ratio	Lower	Upper
75	100		
53	0.0	64.2	96.2#
89	0.0	35.6	53.4#



#92  
 1,2-Dibromo-3-Chloropropane  
 Concen: 16.246 ug/l  
 RT: 14.508 min Scan# 2140  
 Delta R.T. 0.018 min  
 Lab File: VD070407.D  
 Acq: 21 Sep 2021 16:35



Tgt Ion	Ratio	Lower	Upper
75	100		
155	0.0	40.3	120.9#
157	0.0	48.9	146.6#

