

Data Path : Z:\voasrv\HPCHEM1\MSVOA_D\Data\VD092121\
 Data File : VD070410.D
 Acq On : 21 Sep 2021 18:00
 Operator : VA/SY
 Sample : M3824-04
 Misc : 5.06G/5.00ml/MSVOA_D/SOIL
 ALS Vial : 16 Sample Multiplier: 1

Instrument :
 MSVOA_D
 ClientSampleId :
 TP-C

Quant Time: Sep 22 01:48:48 2021
 Quant Method : Z:\voasrv\HPCHEM1\MSVOA_D\Method\82D090821S.M
 Quant Title : SW846 8260
 QLast Update : Thu Sep 09 03:07:09 2021
 Response via : Initial Calibration

Compound	R.T.	QIon	Response	Conc	Units	Dev(Min)

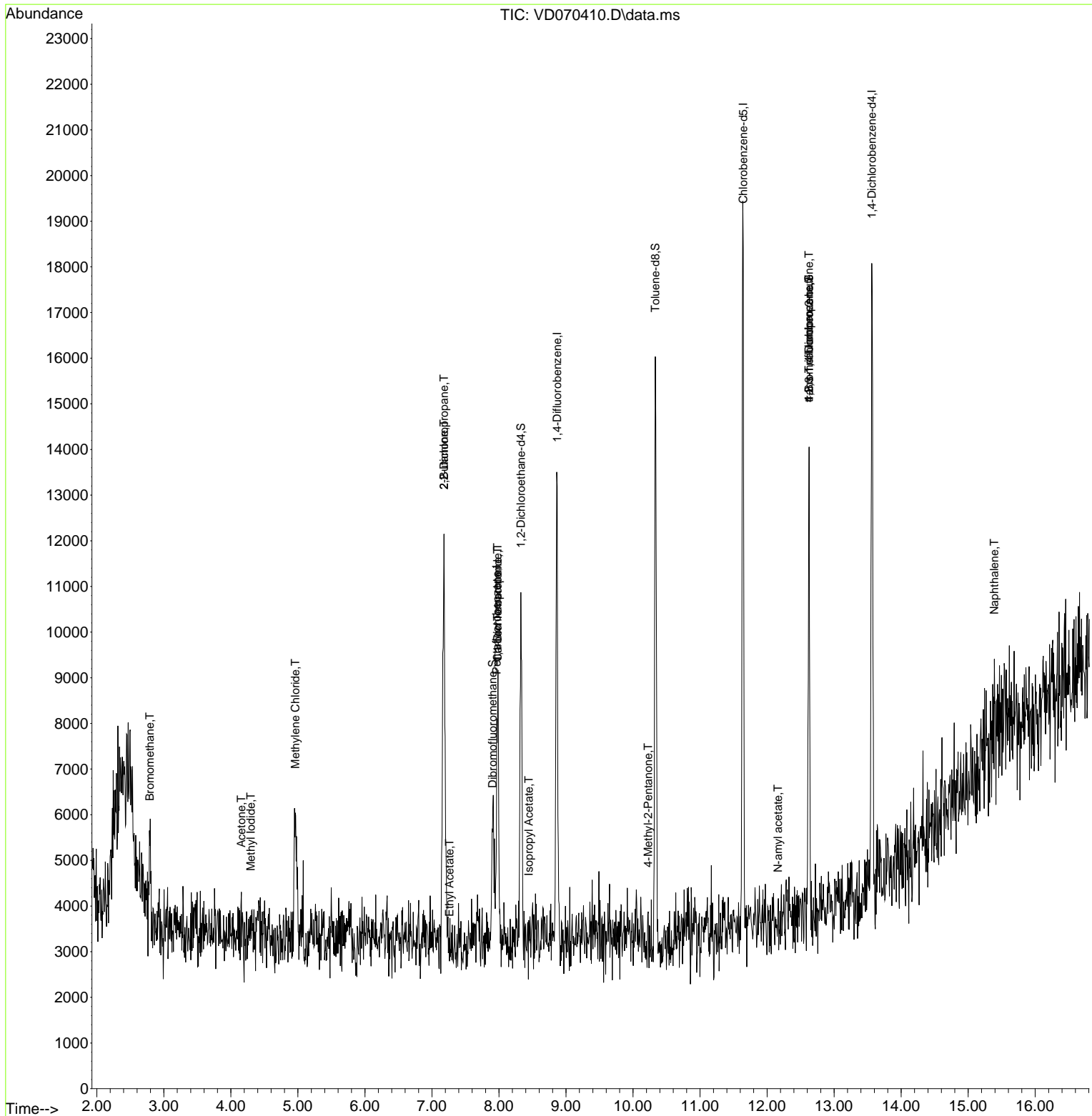
Internal Standards						
1) Pentafluorobenzene	7.967	168	4794	50.000	ug/l	#-0.01
34) 1,4-Difluorobenzene	8.867	114	9377	50.000	ug/l	0.00
63) Chlorobenzene-d5	11.644	117	10290	50.000	ug/l	0.00
72) 1,4-Dichlorobenzene-d4	13.561	152	4277	50.000	ug/l	0.00
System Monitoring Compounds						
33) 1,2-Dichloroethane-d4	8.326	65	5760	93.573	ug/l	0.00
Spiked Amount	50.000	Range 50 - 163	Recovery	=	187.140%#	
35) Dibromofluoromethane	7.903	113	2575	38.579	ug/l	-0.01
Spiked Amount	50.000	Range 54 - 147	Recovery	=	77.160%	
50) Toluene-d8	10.332	98	9839	40.600	ug/l	0.00
Spiked Amount	50.000	Range 49 - 140	Recovery	=	81.200%	
62) 4-Bromofluorobenzene	12.626	95	3615	42.683	ug/l	0.00
Spiked Amount	50.000	Range 25 - 144	Recovery	=	85.360%	
Target Compounds						
						Qvalue
5) Bromomethane	2.791	94	1357	27.260	ug/l #	48
10) Methyl Iodide	4.297	142	391	7.484	ug/l #	39
16) Acetone	4.156	43	654	59.509	ug/l #	36
20) Methylene Chloride	4.962	84	2105	27.465	ug/l #	87
25) 2-Butanone	7.179	43	122	8.339	ug/l #	47
26) 2,2-Dichloropropane	7.179	77	268	2.669	ug/l #	51
36) 1,1-Dichloropropene	7.979	75	221	2.205	ug/l #	41
37) Ethyl Acetate	7.261	43	63	1.681	ug/l #	65
38) Carbon Tetrachloride	7.979	117	258	2.603	ug/l #	12
43) Isopropyl Acetate	8.444	43	74	1.068	ug/l #	46
51) 4-Methyl-2-Pentanone	10.226	43	85	2.370	ug/l #	32
74) N-amyl acetate	12.161	43	170	2.601	ug/l #	37
76) 1,2,3-Trichloropropane	12.626	75	1772	40.959	ug/l #	1
81) trans-1,4-Dichloro-2-b...	12.626	75	1772	102.627	ug/l #	17
95) Naphthalene	15.390	128	139	1.114	ug/l #	69

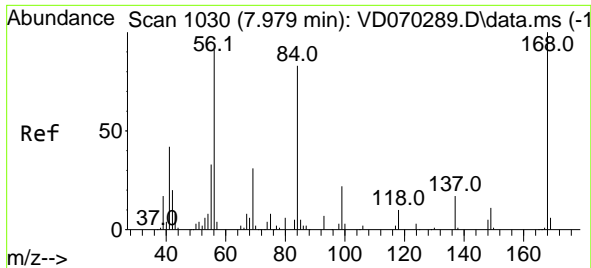
(#) = qualifier out of range (m) = manual integration (+) = signals summed

Data Path : Z:\voasrv\HPCHEM1\MSVOA_D\Data\VD092121\
 Data File : VD070410.D
 Acq On : 21 Sep 2021 18:00
 Operator : VA/SY
 Sample : M3824-04
 Misc : 5.06G/5.00ml/MSVOA_D/SOIL
 ALS Vial : 16 Sample Multiplier: 1

Instrument :
 MSVOA_D
 ClientSampled :
 TP-C

Quant Time: Sep 22 01:48:48 2021
 Quant Method : Z:\voasrv\HPCHEM1\MSVOA_D\Method\82D090821S.M
 Quant Title : SW846 8260
 QLast Update : Thu Sep 09 03:07:09 2021
 Response via : Initial Calibration

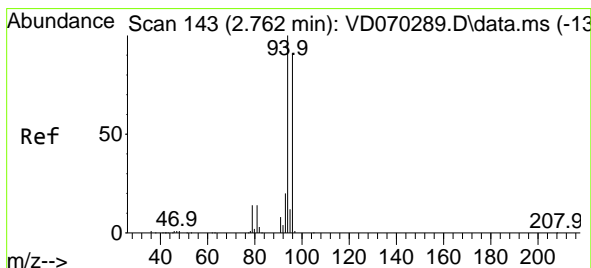
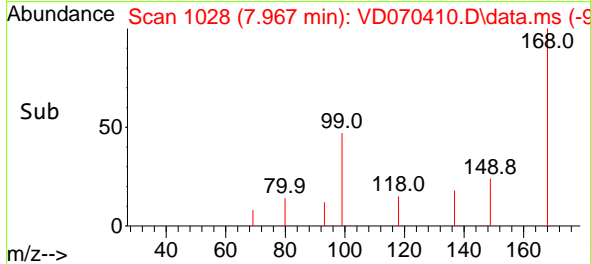
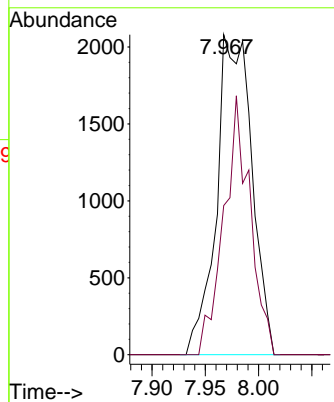
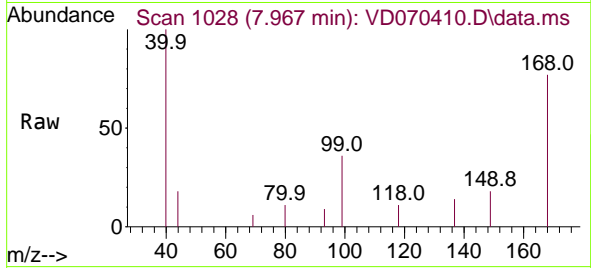




#1
 Pentafluorobenzene
 Concen: 50.000 ug/l
 RT: 7.967 min Scan# 1028
 Delta R.T. -0.012 min
 Lab File: VD070410.D
 Acq: 21 Sep 2021 18:00

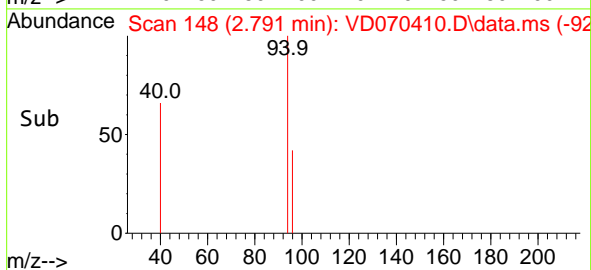
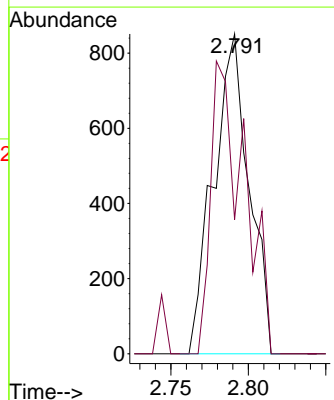
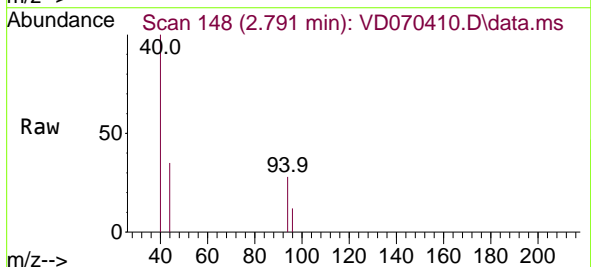
Instrument :
 MSVOA_D
 ClientSampled :
 TP-C

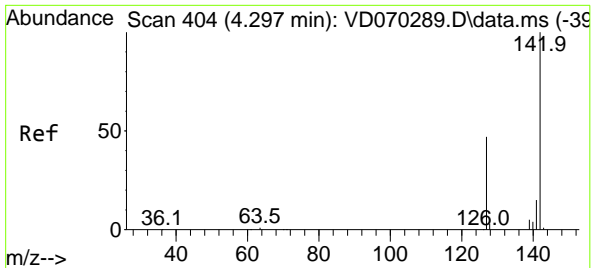
Tgt Ion:168 Resp: 4794
 Ion Ratio Lower Upper
 168 100
 99 46.6 50.8 76.2#



#5
 Bromomethane
 Concen: 27.260 ug/l
 RT: 2.791 min Scan# 148
 Delta R.T. 0.029 min
 Lab File: VD070410.D
 Acq: 21 Sep 2021 18:00

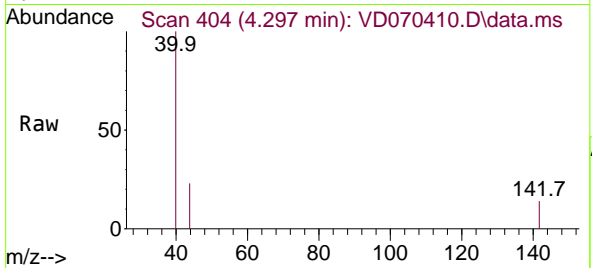
Tgt Ion: 94 Resp: 1357
 Ion Ratio Lower Upper
 94 100
 96 42.0 73.0 109.6#



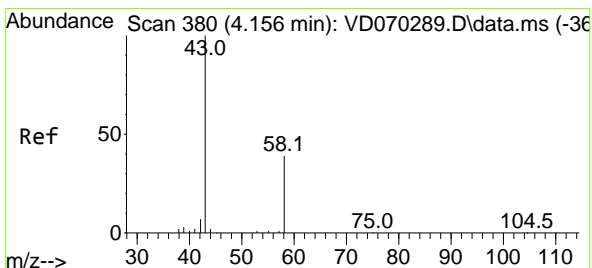
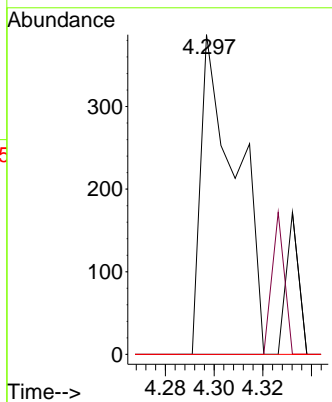
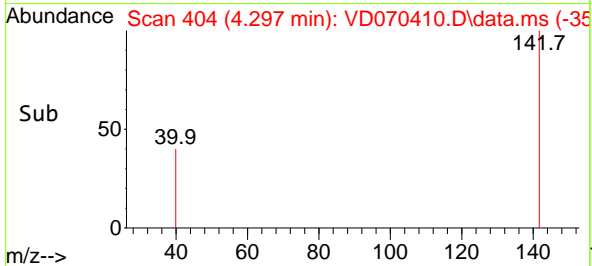


#10
Methyl Iodide
Concen: 7.484 ug/l
RT: 4.297 min Scan# 404
Delta R.T. -0.000 min
Lab File: VD070410.D
Acq: 21 Sep 2021 18:00

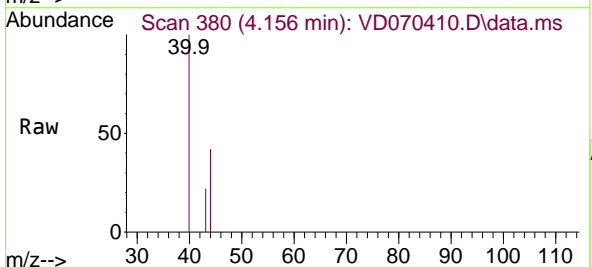
Instrument :
MSVOA_D
ClientSampled :
TP-C



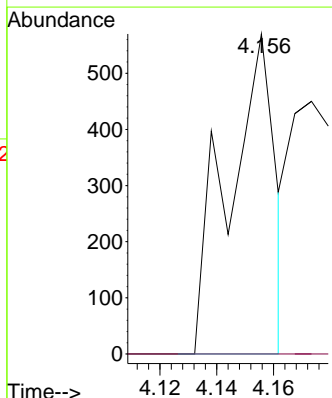
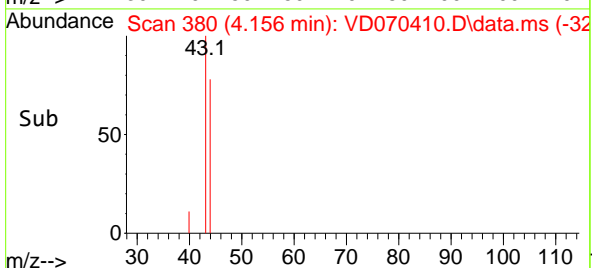
Tgt Ion:142 Resp: 391
Ion Ratio Lower Upper
142 100
127 0.0 36.9 55.3#
141 0.0 11.8 17.6#

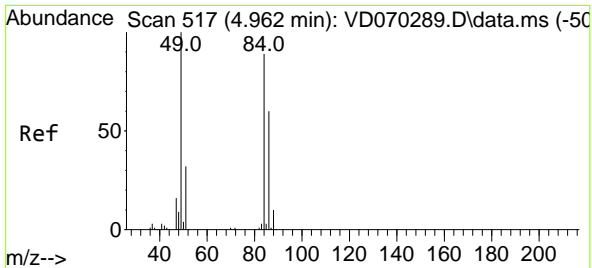


#16
Acetone
Concen: 59.509 ug/l
RT: 4.156 min Scan# 380
Delta R.T. -0.000 min
Lab File: VD070410.D
Acq: 21 Sep 2021 18:00



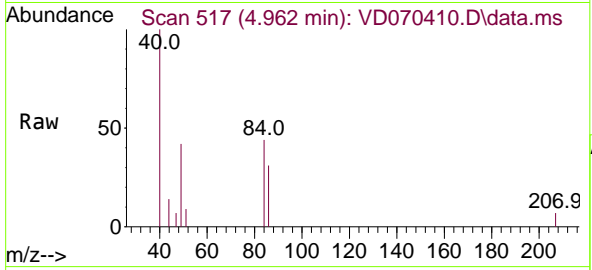
Tgt Ion: 43 Resp: 654
Ion Ratio Lower Upper
43 100
58 0.0 30.9 46.3#





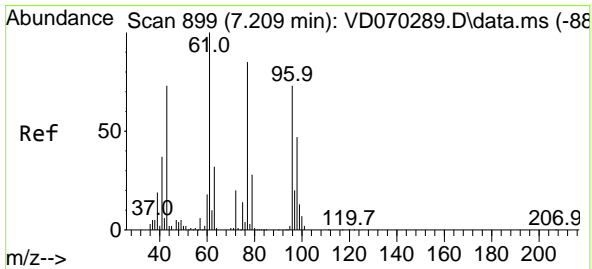
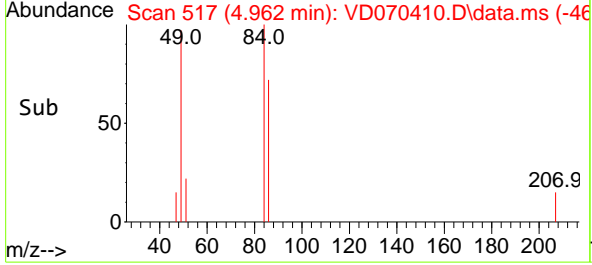
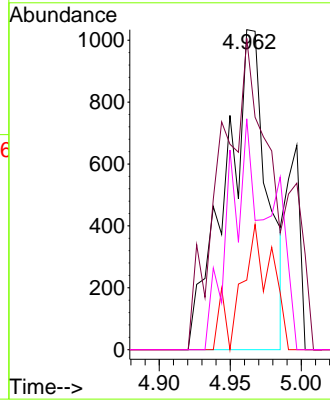
#20
 Methylene Chloride
 Concen: 27.465 ug/l
 RT: 4.962 min Scan# 517
 Delta R.T. -0.000 min
 Lab File: VD070410.D
 Acq: 21 Sep 2021 18:00

Instrument :
 MSVOA_D
 ClientSampled :
 TP-C

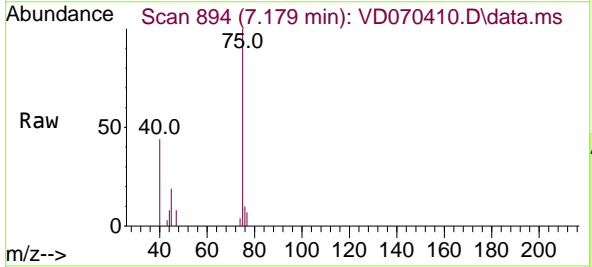


Tgt Ion: 84 Resp: 2105

Ion	Ratio	Lower	Upper
84	100		
49	97.3	89.6	134.4
51	21.8	28.6	43.0#
86	72.1	53.5	80.3

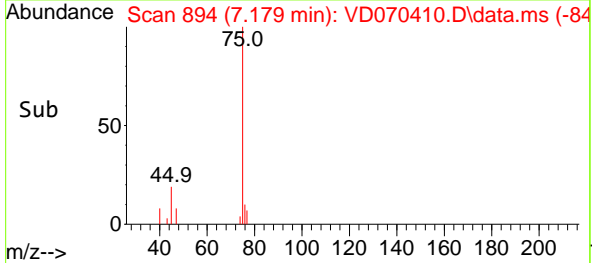
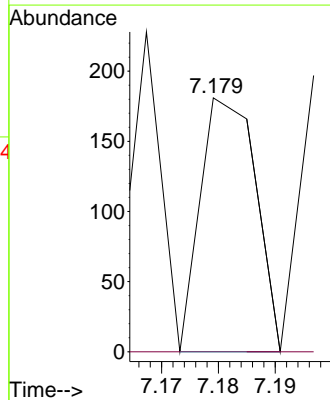


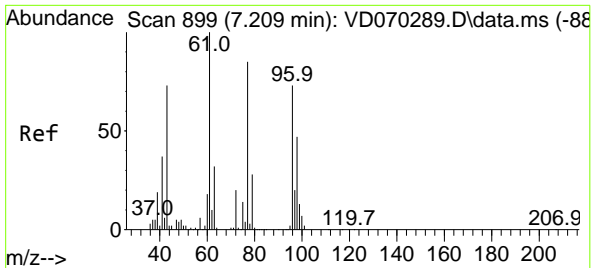
#25
 2-Butanone
 Concen: 8.339 ug/l
 RT: 7.179 min Scan# 894
 Delta R.T. -0.029 min
 Lab File: VD070410.D
 Acq: 21 Sep 2021 18:00



Tgt Ion: 43 Resp: 122

Ion	Ratio	Lower	Upper
43	100		
72	0.0	22.2	33.4#

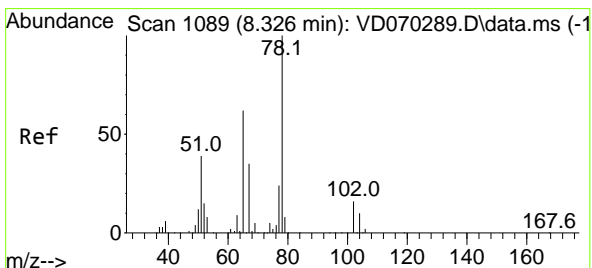
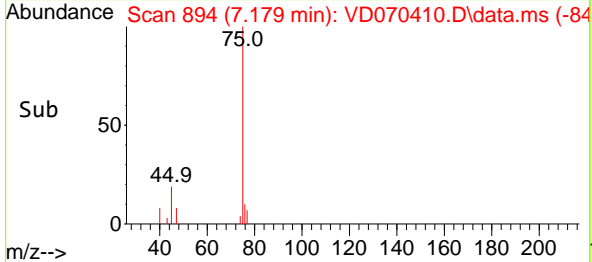
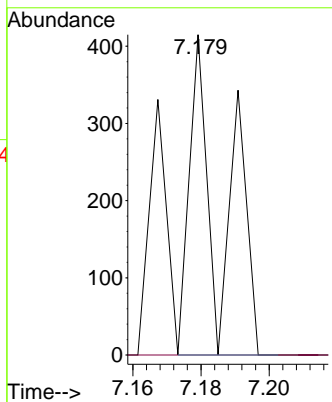
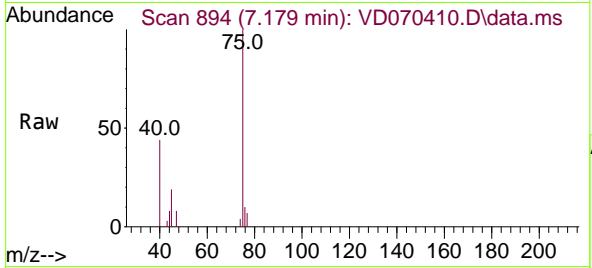




#26
 2,2-Dichloropropane
 Concen: 2.669 ug/l
 RT: 7.179 min Scan# 894
 Delta R.T. -0.029 min
 Lab File: VD070410.D
 Acq: 21 Sep 2021 18:00

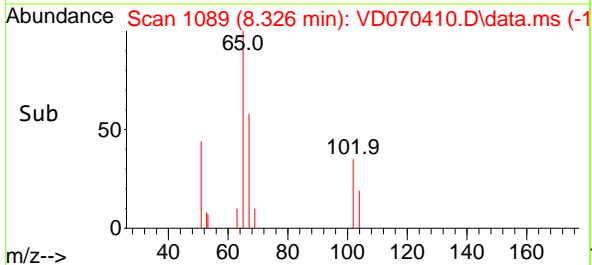
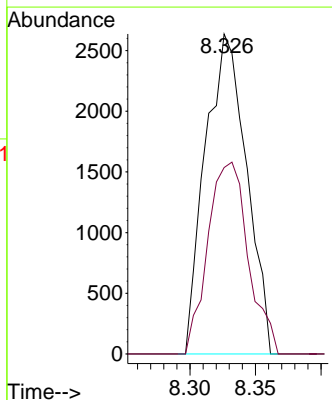
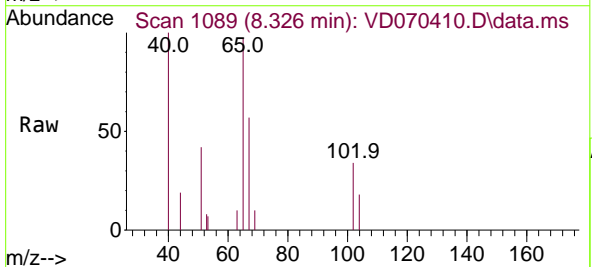
Instrument :
 MSVOA_D
 ClientSampled :
 TP-C

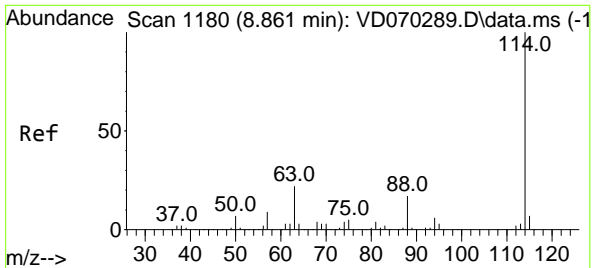
Tgt Ion: 77 Resp: 268
 Ion Ratio Lower Upper
 77 100
 97 0.0 11.9 35.9#



#33
 1,2-Dichloroethane-d4
 Concen: 93.573 ug/l
 RT: 8.326 min Scan# 1089
 Delta R.T. -0.000 min
 Lab File: VD070410.D
 Acq: 21 Sep 2021 18:00

Tgt Ion: 65 Resp: 5760
 Ion Ratio Lower Upper
 65 100
 67 58.7 0.0 111.4

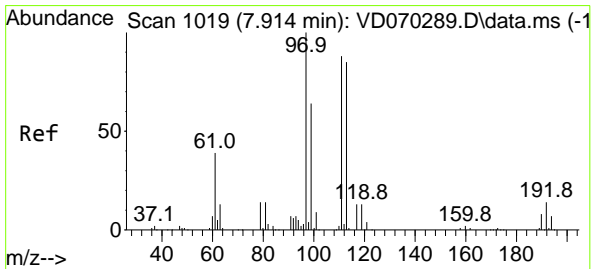
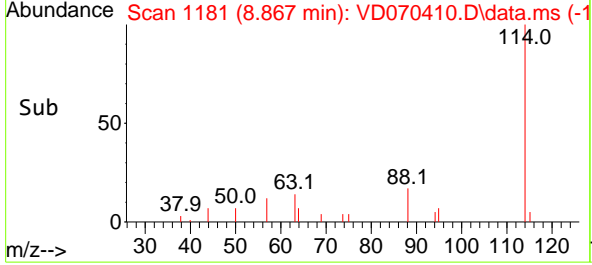
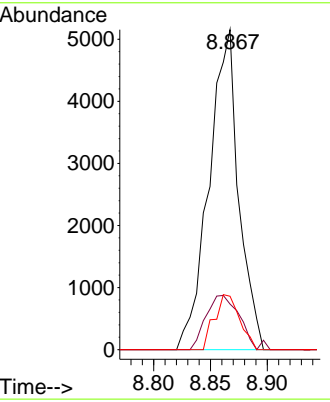
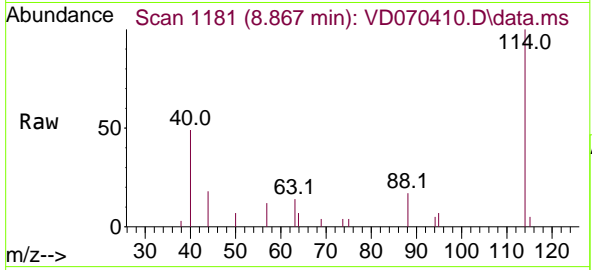




#34
 1,4-Difluorobenzene
 Concen: 50.000 ug/l
 RT: 8.867 min Scan# 1181
 Delta R.T. 0.006 min
 Lab File: VD070410.D
 Acq: 21 Sep 2021 18:00

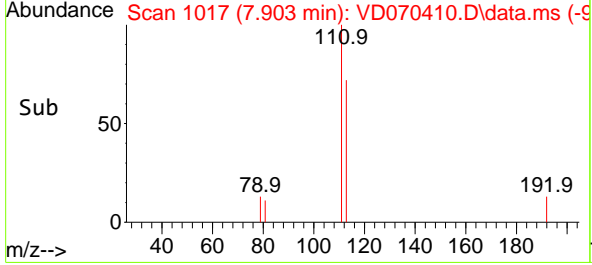
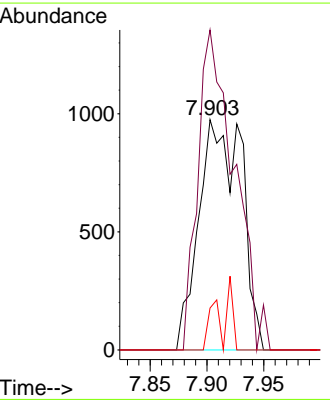
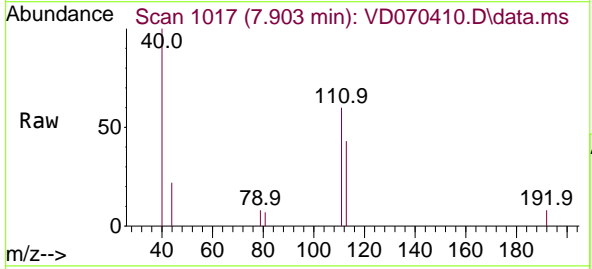
Instrument : MSVOA_D
 ClientSampled : TP-C

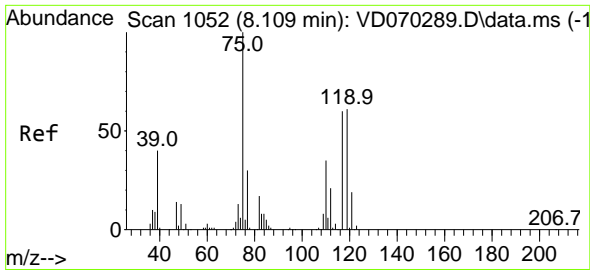
Tgt Ion	Resp	Lower	Upper
114	100		
63	14.3	0.0	43.4
88	16.7	0.0	33.4



#35
 Dibromofluoromethane
 Concen: 38.579 ug/l
 RT: 7.903 min Scan# 1017
 Delta R.T. -0.012 min
 Lab File: VD070410.D
 Acq: 21 Sep 2021 18:00

Tgt Ion	Resp	Lower	Upper
113	100		
111	117.3	81.4	122.2
192	5.3	13.0	19.6#



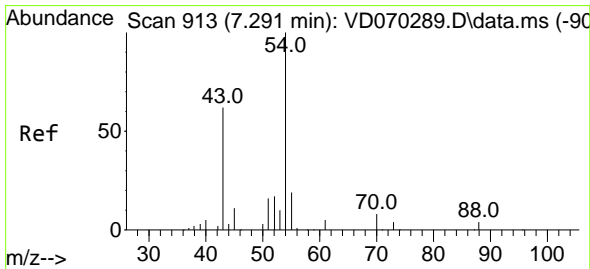
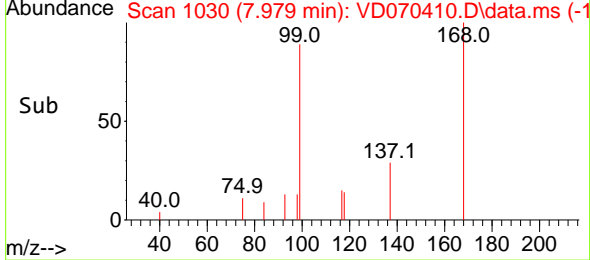
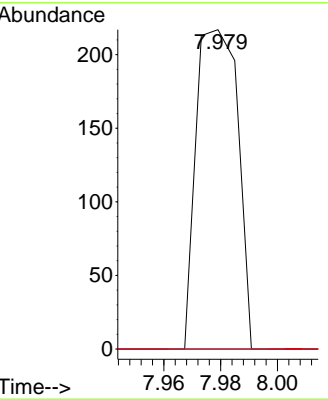
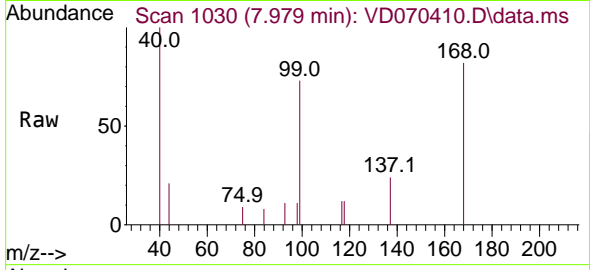


#36
 1,1-Dichloropropene
 Concen: 2.205 ug/l
 RT: 7.979 min Scan# 1030
 Delta R.T. -0.129 min
 Lab File: VD070410.D
 Acq: 21 Sep 2021 18:00

Instrument :
 MSVOA_D
 ClientSampled :
 TP-C

Tgt Ion: 75 Resp: 221

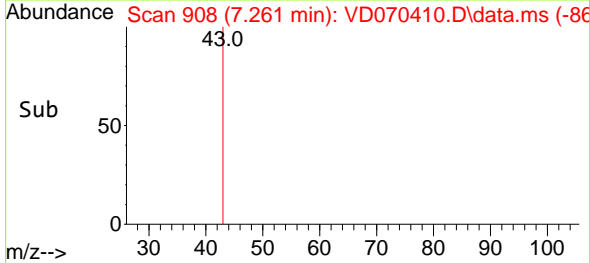
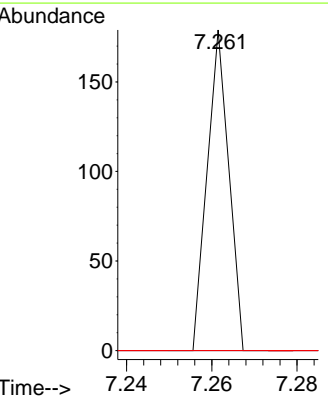
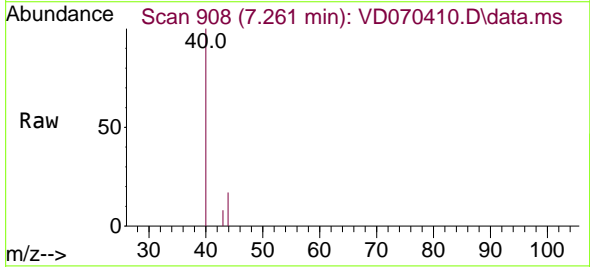
Ion	Ratio	Lower	Upper
75	100		
110	0.0	17.9	53.7#
77	0.0	25.3	37.9#

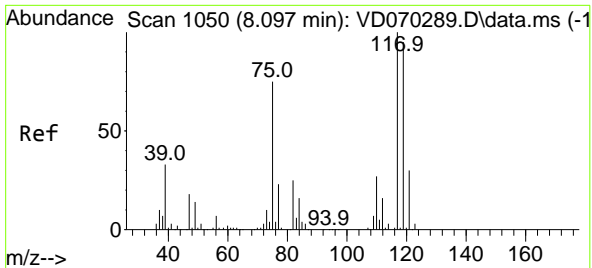


#37
 Ethyl Acetate
 Concen: 1.681 ug/l
 RT: 7.261 min Scan# 908
 Delta R.T. -0.029 min
 Lab File: VD070410.D
 Acq: 21 Sep 2021 18:00

Tgt Ion: 43 Resp: 63

Ion	Ratio	Lower	Upper
43	100		
61	0.0	13.0	19.6#
70	0.0	9.8	14.6#



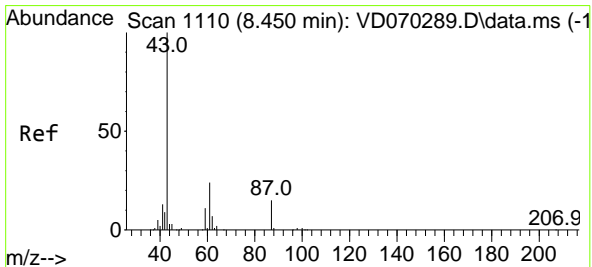
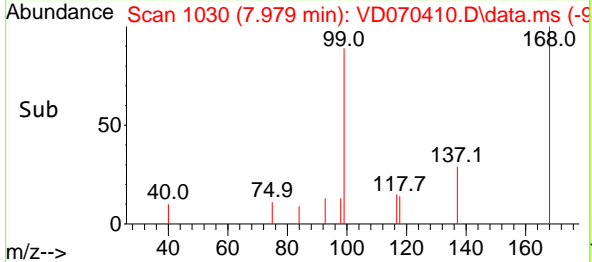
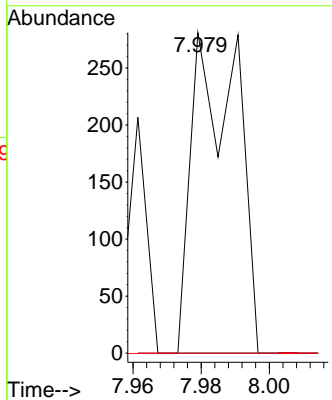
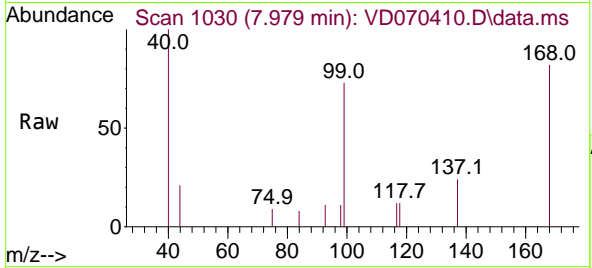


#38
 Carbon Tetrachloride
 Concen: 2.603 ug/l
 RT: 7.979 min Scan# 1030
 Delta R.T. -0.118 min
 Lab File: VD070410.D
 Acq: 21 Sep 2021 18:00

Instrument :
 MSVOA_D
 ClientSampleId :
 TP-C

Tgt Ion:117 Resp: 258

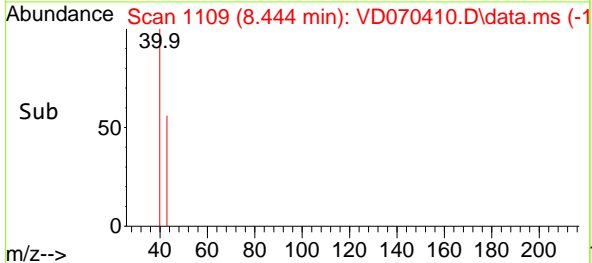
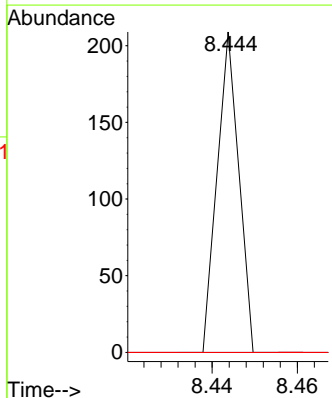
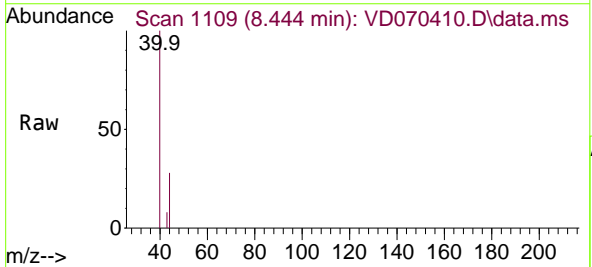
Ion	Ratio	Lower	Upper
117	100		
119	0.0	76.1	114.1#
121	0.0	23.8	35.6#

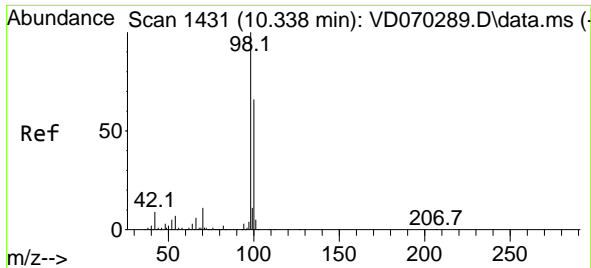


#43
 Isopropyl Acetate
 Concen: 1.068 ug/l
 RT: 8.444 min Scan# 1109
 Delta R.T. -0.006 min
 Lab File: VD070410.D
 Acq: 21 Sep 2021 18:00

Tgt Ion: 43 Resp: 74

Ion	Ratio	Lower	Upper
43	100		
61	0.0	29.0	43.6#
87	0.0	12.8	19.2#

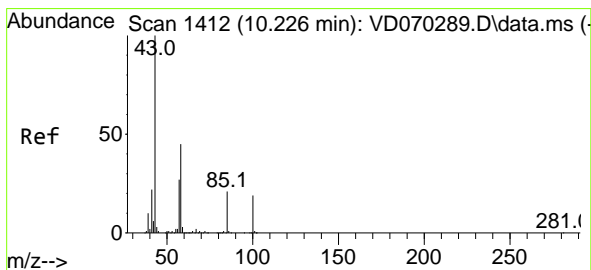
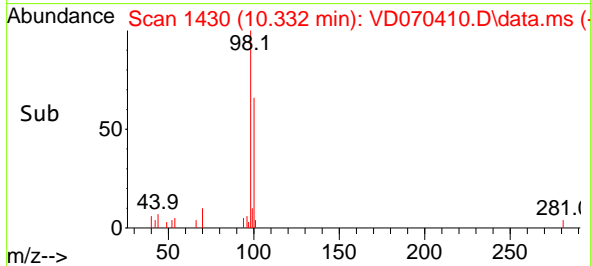
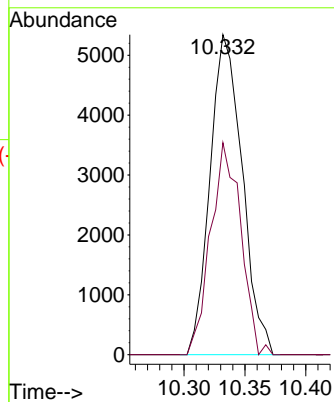
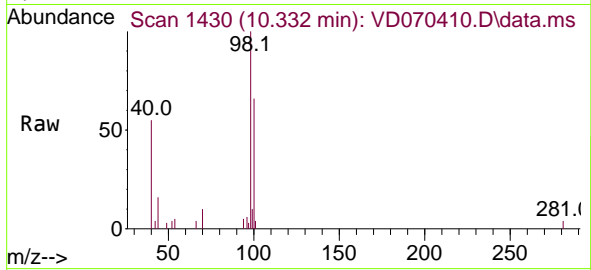




#50
 Toluene-d8
 Concen: 40.600 ug/l
 RT: 10.332 min Scan# 1430
 Delta R.T. -0.006 min
 Lab File: VD070410.D
 Acq: 21 Sep 2021 18:00

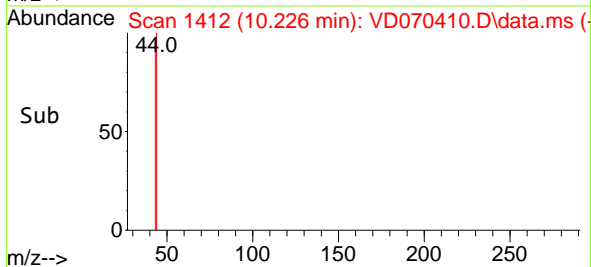
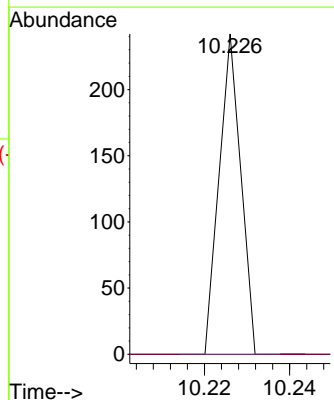
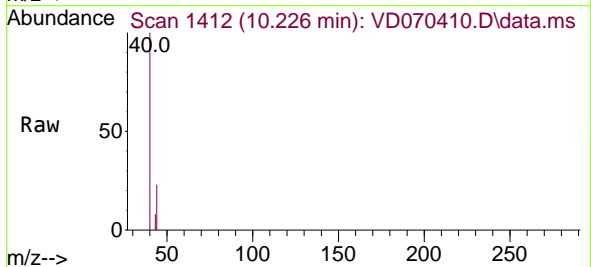
Instrument :
 MSVOA_D
 ClientSampled :
 TP-C

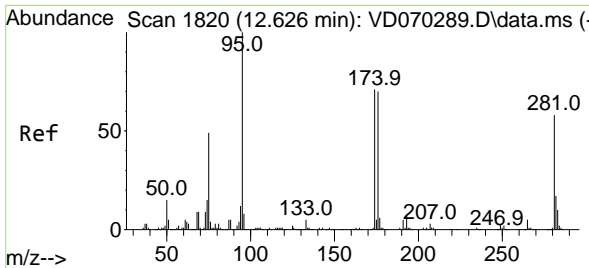
Tgt Ion: 98 Resp: 9839
 Ion Ratio Lower Upper
 98 100
 100 62.0 52.0 78.0



#51
 4-Methyl-2-Pentanone
 Concen: 2.370 ug/l
 RT: 10.226 min Scan# 1412
 Delta R.T. -0.000 min
 Lab File: VD070410.D
 Acq: 21 Sep 2021 18:00

Tgt Ion: 43 Resp: 85
 Ion Ratio Lower Upper
 43 100
 58 0.0 35.4 53.2#

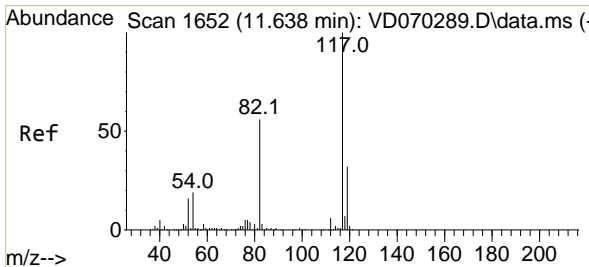
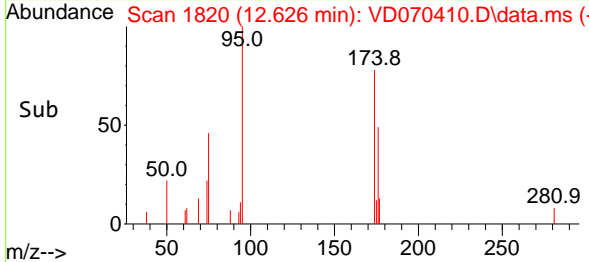
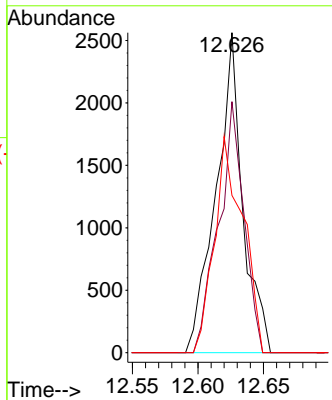
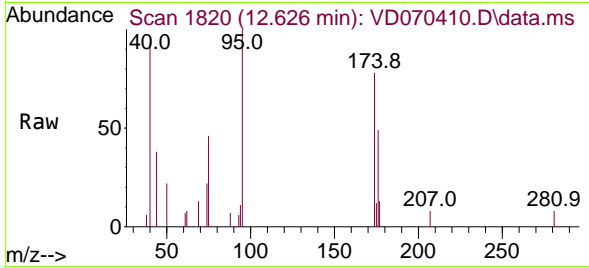




#62
 4-Bromofluorobenzene
 Concen: 42.683 ug/l
 RT: 12.626 min Scan# 1820
 Delta R.T. -0.000 min
 Lab File: VD070410.D
 Acq: 21 Sep 2021 18:00

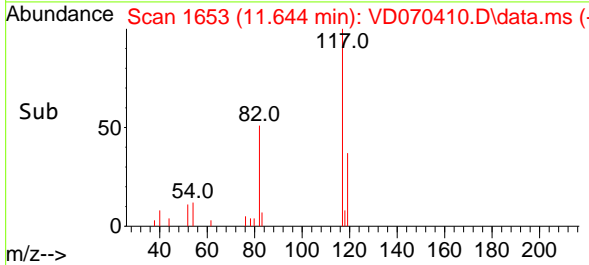
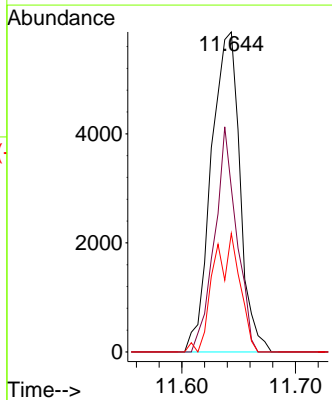
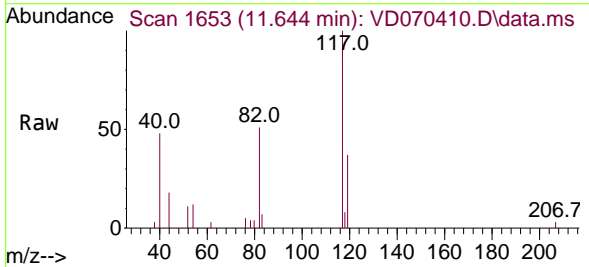
Instrument :
 MSVOA_D
 ClientSampled :
 TP-C

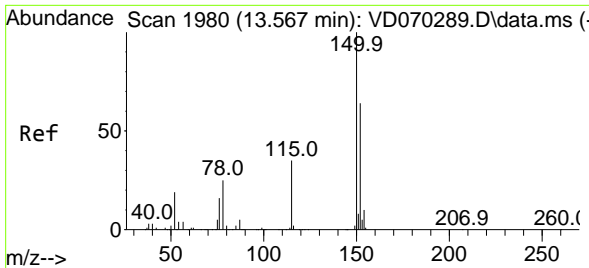
Tgt Ion	Resp	Lower	Upper
95	3615		
174	74.8	0.0	140.6
176	72.1	0.0	137.4



#63
 Chlorobenzene-d5
 Concen: 50.000 ug/l
 RT: 11.644 min Scan# 1653
 Delta R.T. 0.006 min
 Lab File: VD070410.D
 Acq: 21 Sep 2021 18:00

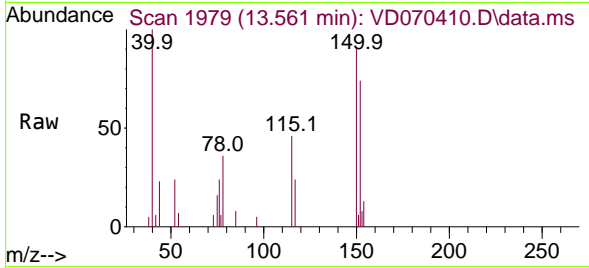
Tgt Ion	Resp	Lower	Upper
117	10290		
82	51.2	45.0	67.4
119	37.0	25.2	37.8



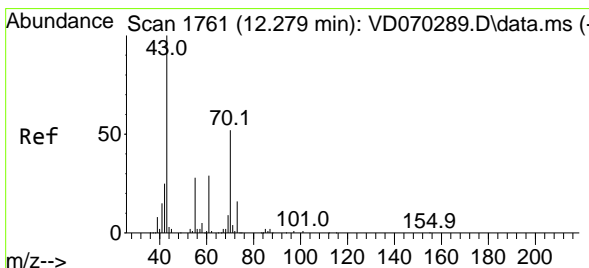
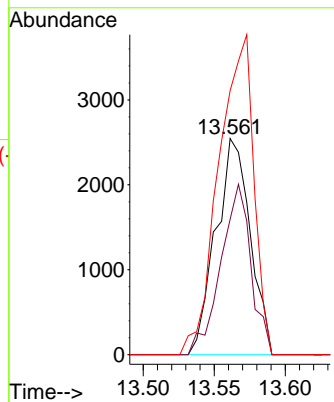
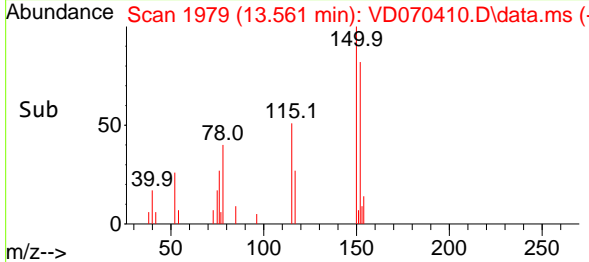


#72
 1,4-Dichlorobenzene-d4
 Concen: 50.000 ug/l
 RT: 13.561 min Scan# 1979
 Delta R.T. -0.006 min
 Lab File: VD070410.D
 Acq: 21 Sep 2021 18:00

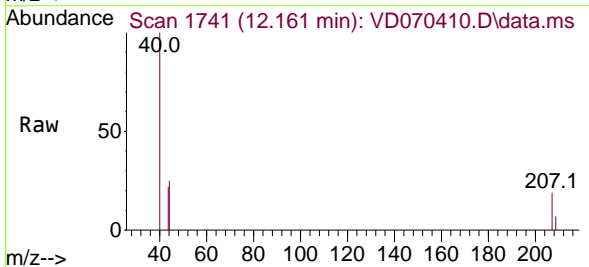
Instrument :
 MSVOA_D
 ClientSampled :
 TP-C



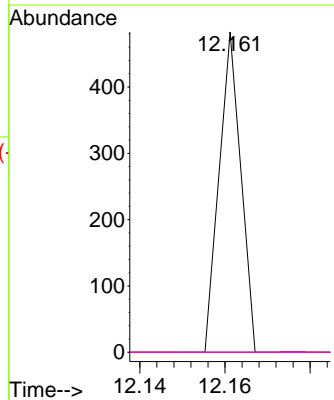
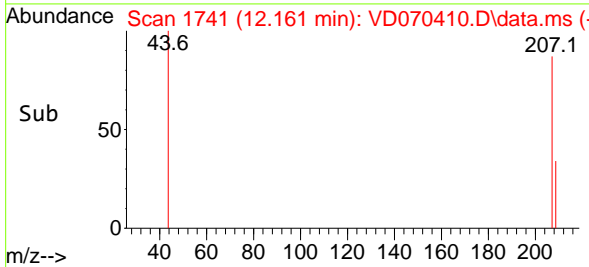
Tgt Ion:152 Resp: 4277
 Ion Ratio Lower Upper
 152 100
 115 69.3 32.1 96.3
 150 150.8 0.0 350.6

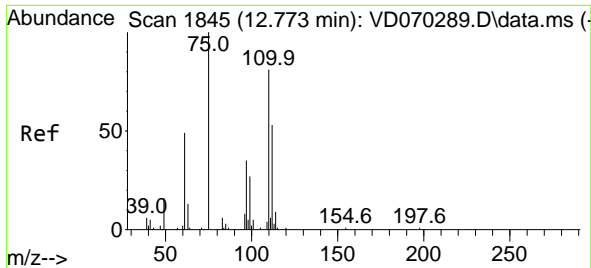


#74
 N-amy1 acetate
 Concen: 2.601 ug/l
 RT: 12.161 min Scan# 1741
 Delta R.T. -0.118 min
 Lab File: VD070410.D
 Acq: 21 Sep 2021 18:00



Tgt Ion: 43 Resp: 170
 Ion Ratio Lower Upper
 43 100
 70 0.0 41.4 62.0#
 55 0.0 22.8 34.2#
 61 0.0 21.8 32.6#

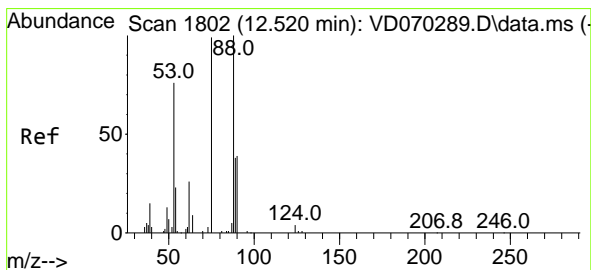
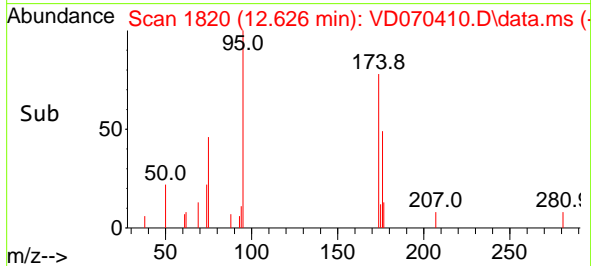
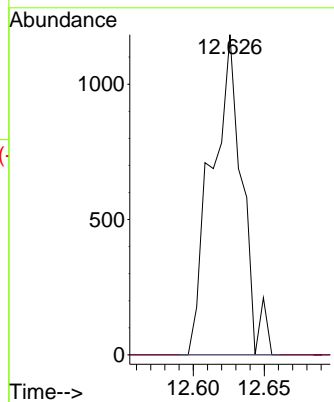
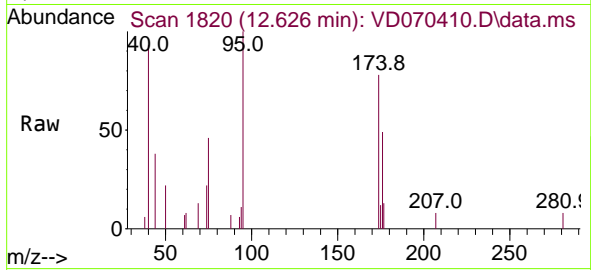




#76
 1,2,3-Trichloropropane
 Concen: 40.959 ug/l
 RT: 12.626 min Scan# 1820
 Delta R.T. -0.147 min
 Lab File: VD070410.D
 Acq: 21 Sep 2021 18:00

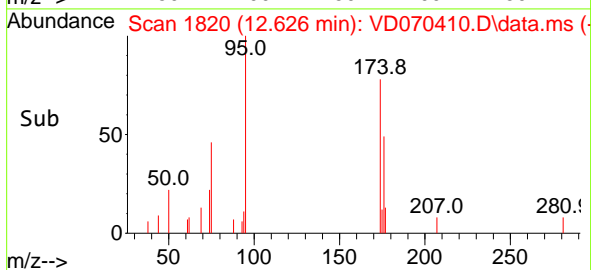
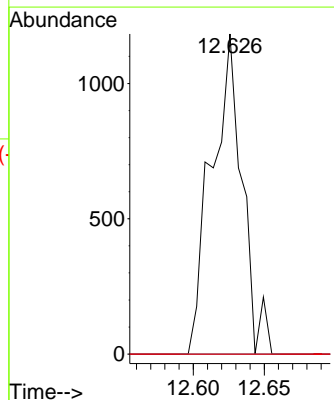
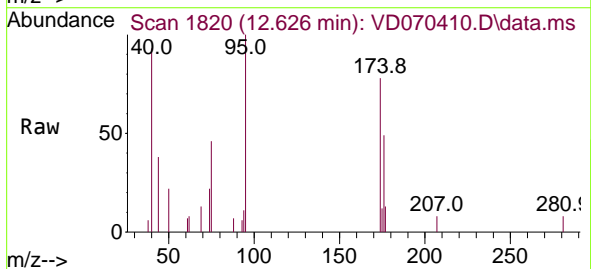
Instrument :
 MSVOA_D
 ClientSampled :
 TP-C

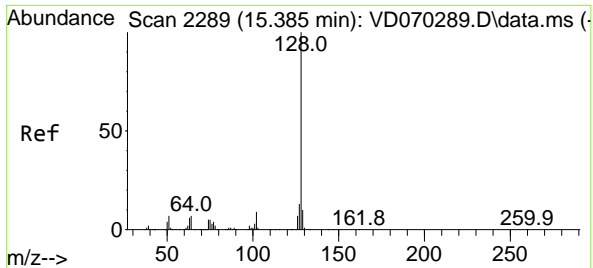
Tgt Ion: 75 Resp: 1772
 Ion Ratio Lower Upper
 75 100
 77 0.0 174.9 524.7#



#81
 trans-1,4-Dichloro-2-butene
 Concen: 102.627 ug/l
 RT: 12.626 min Scan# 1820
 Delta R.T. 0.106 min
 Lab File: VD070410.D
 Acq: 21 Sep 2021 18:00

Tgt Ion: 75 Resp: 1772
 Ion Ratio Lower Upper
 75 100
 53 0.0 64.2 96.2#
 89 0.0 35.6 53.4#





#95
 Naphthalene
 Concen: 1.114 ug/l
 RT: 15.390 min Scan# 2290
 Delta R.T. 0.006 min
 Lab File: VD070410.D
 Acq: 21 Sep 2021 18:00

Instrument :
 MSVOA_D
 ClientSampled :
 TP-C

Tgt Ion:128 Resp: 139

Ion	Ratio	Lower	Upper
128	100		
127	0.0	10.5	15.7#
129	0.0	9.0	13.4#

