

Data Path : Z:\voasrv\HPCHEM1\MSVOA_D\Data\VD092221\
 Data File : VD070416.D
 Acq On : 22 Sep 2021 10:09
 Operator : VA/SY
 Sample : VD0922SBL01
 Misc : 5.00G/5.00ml/MSVOA_D/SOIL
 ALS Vial : 3 Sample Multiplier: 1

Instrument :
 MSVOA_D
 ClientSampleId :
 VD0922SBL01

Quant Time: Sep 23 05:28:52 2021
 Quant Method : Z:\voasrv\HPCHEM1\MSVOA_D\Method\82D090821S.M
 Quant Title : SW846 8260
 QLast Update : Thu Sep 09 03:07:09 2021
 Response via : Initial Calibration

Compound	R.T.	QIon	Response	Conc	Units	Dev(Min)

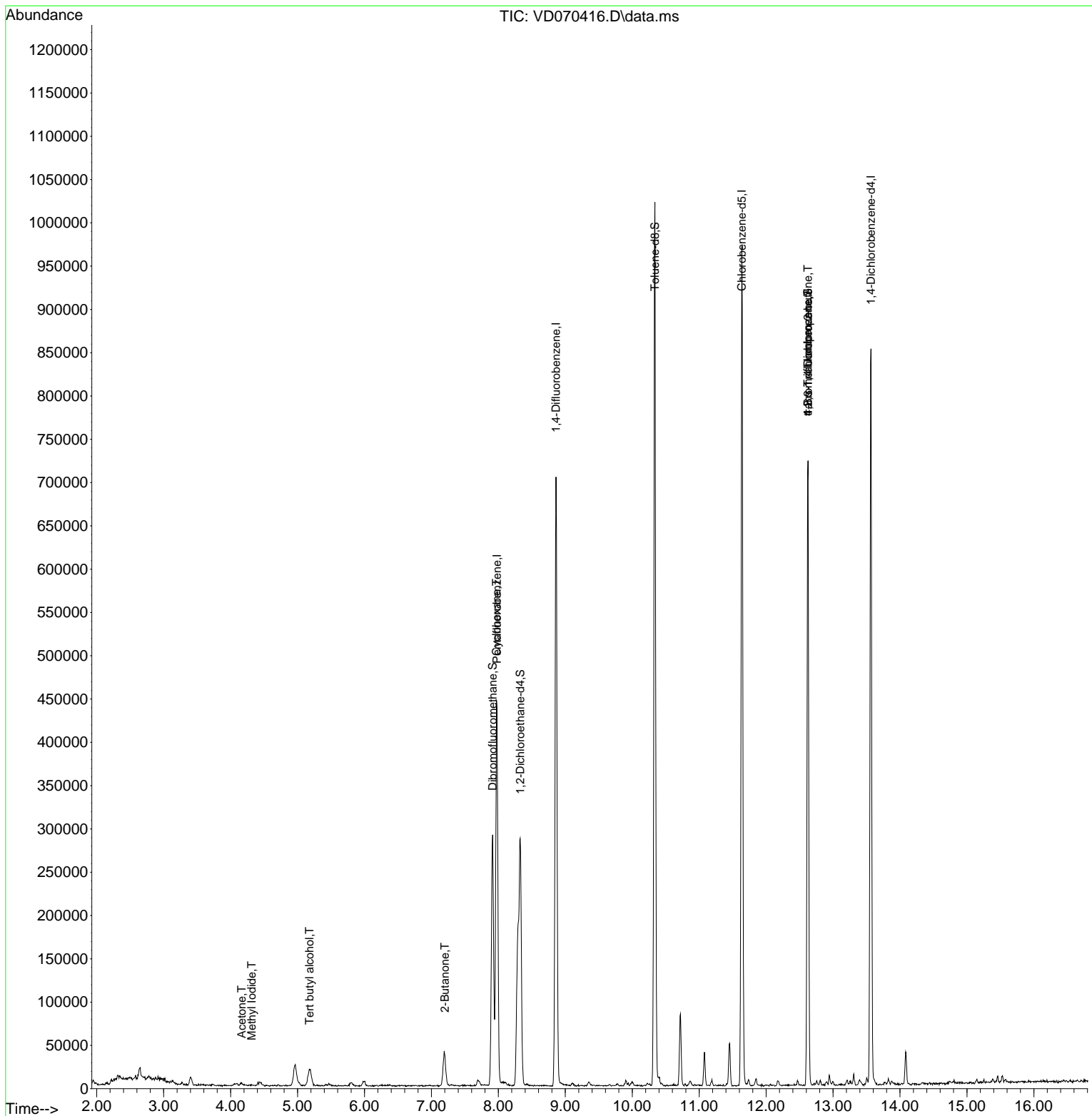
Internal Standards						
1) Pentafluorobenzene	7.979	168	306394	50.000	ug/l	0.00
34) 1,4-Difluorobenzene	8.861	114	613248	50.000	ug/l	0.00
63) Chlorobenzene-d5	11.638	117	575463	50.000	ug/l	0.00
72) 1,4-Dichlorobenzene-d4	13.567	152	233610	50.000	ug/l	0.00
System Monitoring Compounds						
33) 1,2-Dichloroethane-d4	8.326	65	216431	55.013	ug/l	0.00
Spiked Amount	50.000	Range	50 - 163	Recovery	=	110.020%
35) Dibromofluoromethane	7.914	113	209506	47.995	ug/l	0.00
Spiked Amount	50.000	Range	54 - 147	Recovery	=	95.980%
50) Toluene-d8	10.338	98	697589	44.015	ug/l	0.00
Spiked Amount	50.000	Range	49 - 140	Recovery	=	88.020%
62) 4-Bromofluorobenzene	12.626	95	217138	39.202	ug/l	0.00
Spiked Amount	50.000	Range	25 - 144	Recovery	=	78.400%
Target Compounds						
						Qvalue
2) Dichlorodifluoromethane	1.991	85	1255	Below Cal		99
3) Chloromethane	2.215	50	2049	Below Cal	#	85
5) Bromomethane	2.773	94	3326	Below Cal		84
6) Chloroethane	2.915	64	1189	Below Cal	#	69
10) Methyl Iodide	4.314	142	1530	1.424	ug/l #	39
11) Tert butyl alcohol	5.179	59	16809	37.788	ug/l #	100
16) Acetone	4.167	43	5287	7.527	ug/l	99
18) Methyl Acetate	4.714	43	81	Below Cal	#	48
20) Methylene Chloride	4.956	84	19410	Below Cal	#	92
25) 2-Butanone	7.203	43	2695	2.882	ug/l #	87
31) Cyclohexane	7.973	56	8415	1.242	ug/l #	1
76) 1,2,3-Trichloropropane	12.626	75	106776	45.187	ug/l #	1
81) trans-1,4-Dichloro-2-b...	12.626	75	106776	113.219	ug/l #	18

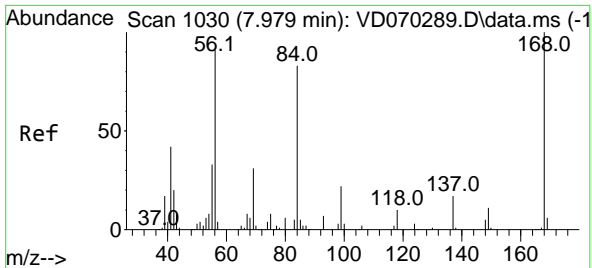
(#) = qualifier out of range (m) = manual integration (+) = signals summed

Data Path : Z:\voasrv\HPCHEM1\MSVOA_D\Data\VD092221\
 Data File : VD070416.D
 Acq On : 22 Sep 2021 10:09
 Operator : VA/SY
 Sample : VD0922SBL01
 Misc : 5.00G/5.00ml/MSVOA_D/SOIL
 ALS Vial : 3 Sample Multiplier: 1

Instrument :
 MSVOA_D
 Client Sampled :
 VD0922SBL01

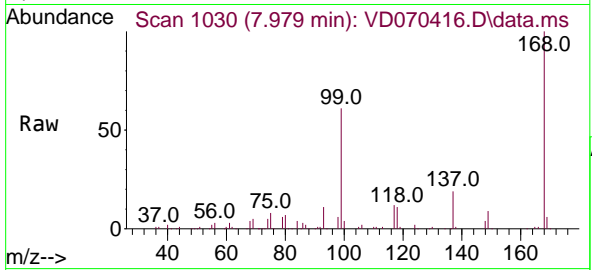
Quant Time: Sep 23 05:28:52 2021
 Quant Method : Z:\voasrv\HPCHEM1\MSVOA_D\Method\82D090821S.M
 Quant Title : SW846 8260
 QLast Update : Thu Sep 09 03:07:09 2021
 Response via : Initial Calibration



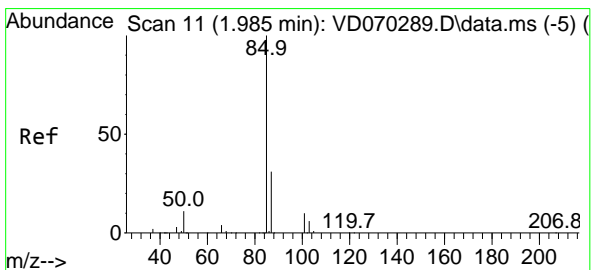
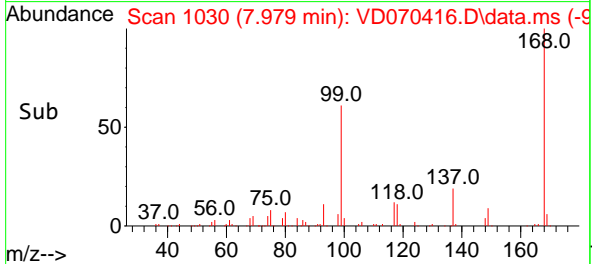
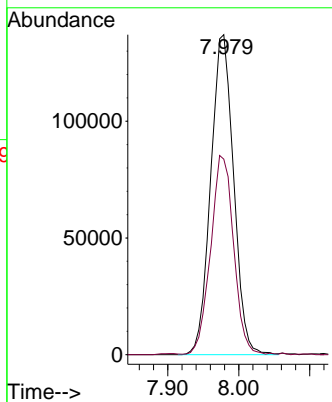


#1
 Pentafluorobenzene
 Concen: 50.000 ug/l
 RT: 7.979 min Scan# 1030
 Delta R.T. 0.000 min
 Lab File: VD070416.D
 Acq: 22 Sep 2021 10:09

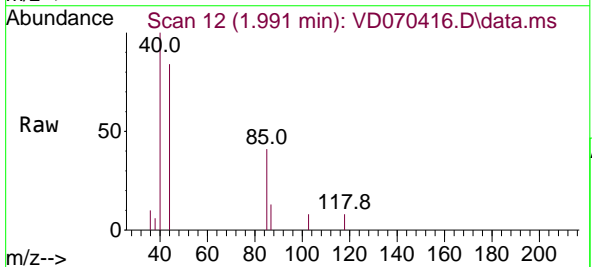
Instrument :
 MSVOA_D
 ClientSampled :
 VD0922SBL01



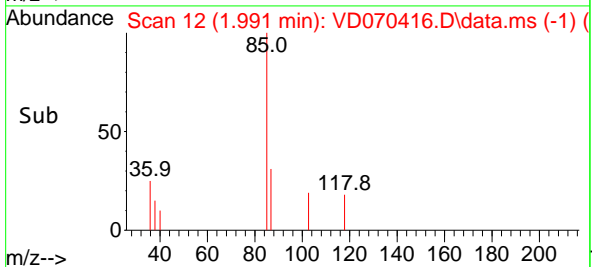
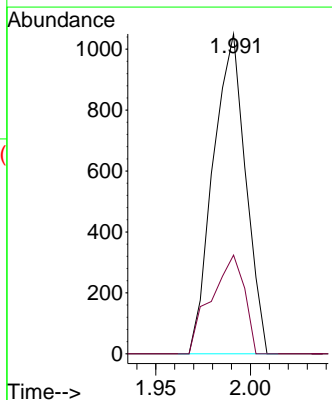
Tgt Ion:168 Resp: 306394
 Ion Ratio Lower Upper
 168 100
 99 60.9 50.8 76.2

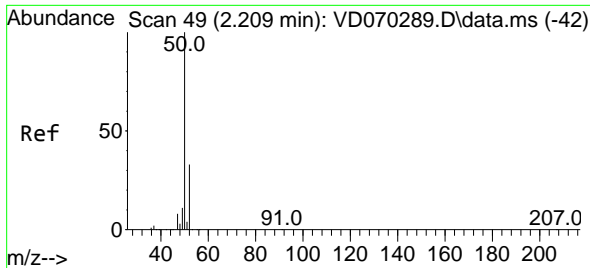


#2
 Dichlorodifluoromethane
 Concen: Below Cal
 RT: 1.991 min Scan# 12
 Delta R.T. 0.006 min
 Lab File: VD070416.D
 Acq: 22 Sep 2021 10:09



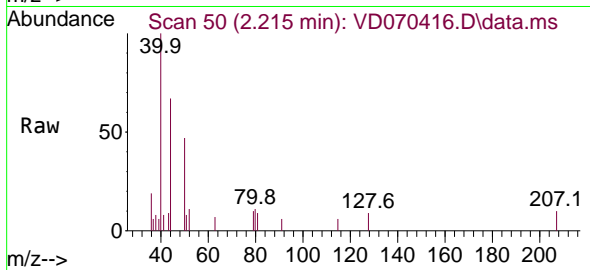
Tgt Ion: 85 Resp: 1255
 Ion Ratio Lower Upper
 85 100
 87 30.9 15.6 46.8



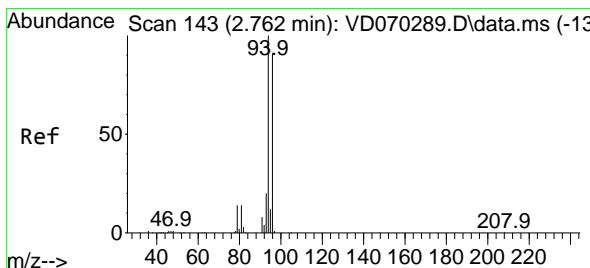
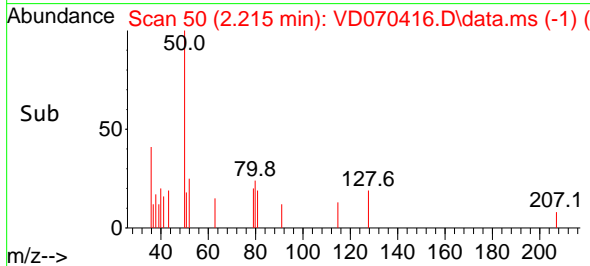
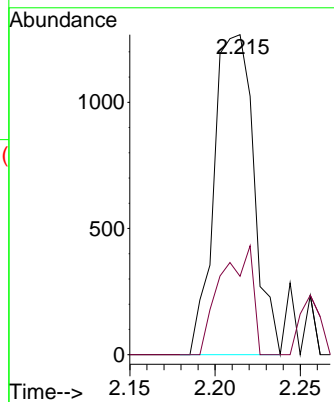


#3
 Chloromethane
 Concen: Below Cal
 RT: 2.215 min Scan# 50
 Delta R.T. 0.006 min
 Lab File: VD070416.D
 Acq: 22 Sep 2021 10:09

Instrument :
 MSVOA_D
 ClientSampled :
 VD0922SBL01

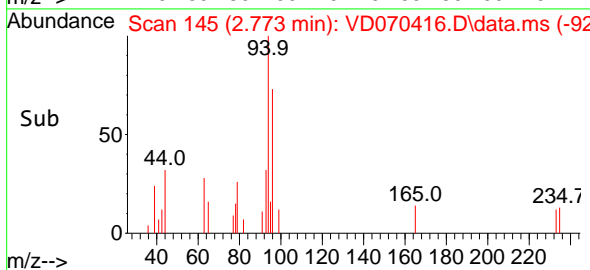
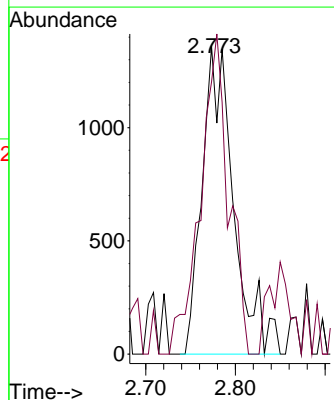
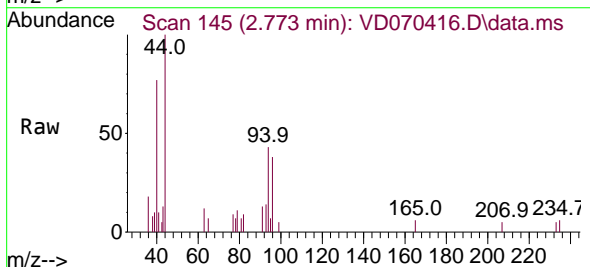


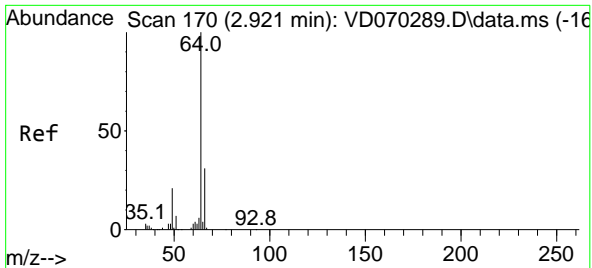
Tgt Ion: 50 Resp: 2049
 Ion Ratio Lower Upper
 50 100
 52 24.5 26.2 39.2#



#5
 Bromomethane
 Concen: Below Cal
 RT: 2.773 min Scan# 145
 Delta R.T. 0.011 min
 Lab File: VD070416.D
 Acq: 22 Sep 2021 10:09

Tgt Ion: 94 Resp: 3326
 Ion Ratio Lower Upper
 94 100
 96 75.6 73.0 109.6

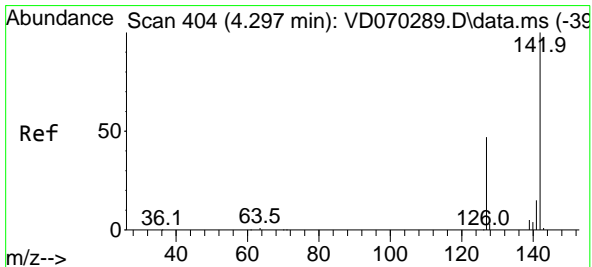
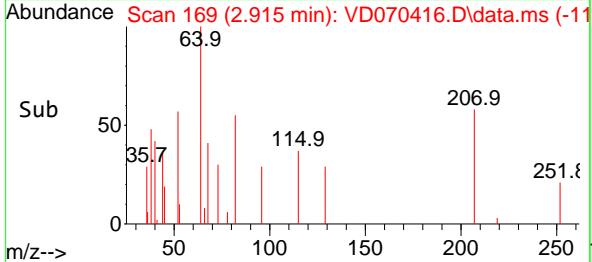
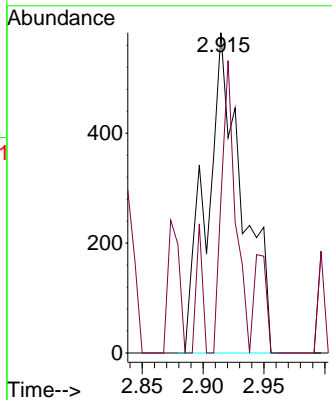
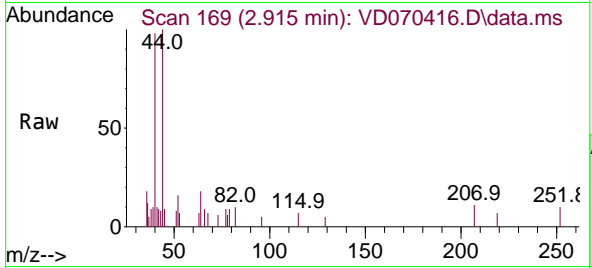




#6
 Chloroethane
 Concen: Below Cal
 RT: 2.915 min Scan# 169
 Delta R.T. -0.006 min
 Lab File: VD070416.D
 Acq: 22 Sep 2021 10:09

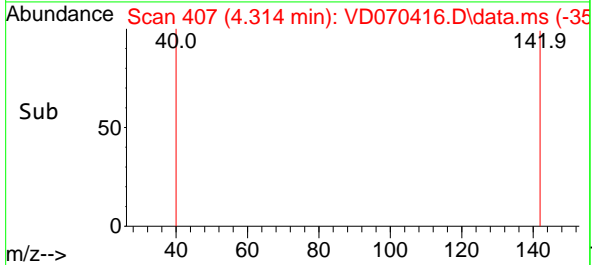
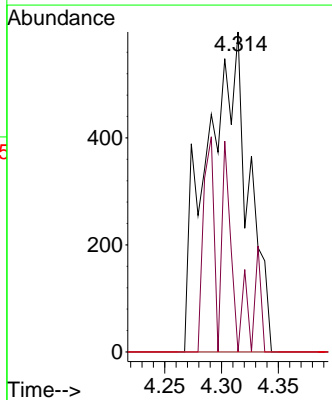
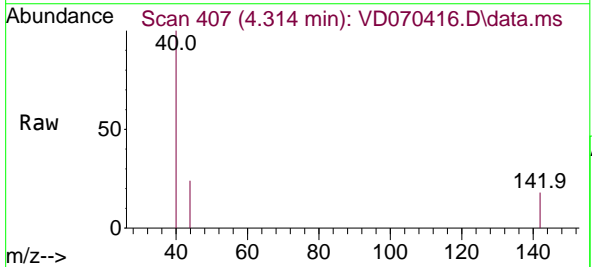
Instrument :
 MSVOA_D
 ClientSampleID :
 VD0922SBL01

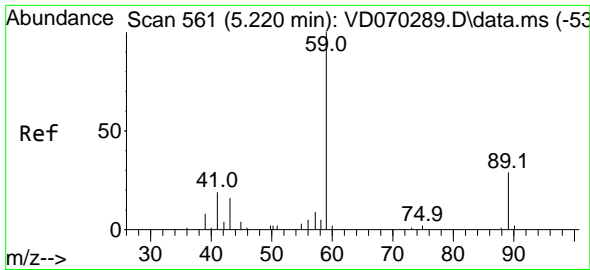
Tgt Ion: 64 Resp: 1189
 Ion Ratio Lower Upper
 64 100
 66 48.2 25.0 37.4#



#10
 Methyl Iodide
 Concen: 1.424 ug/l
 RT: 4.314 min Scan# 407
 Delta R.T. 0.018 min
 Lab File: VD070416.D
 Acq: 22 Sep 2021 10:09

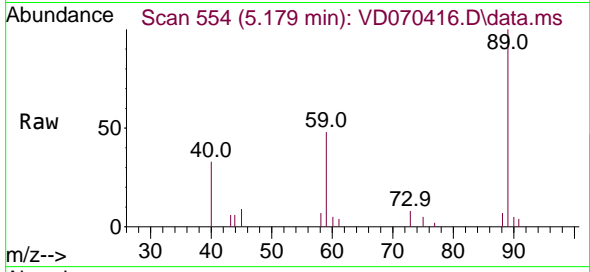
Tgt Ion:142 Resp: 1530
 Ion Ratio Lower Upper
 142 100
 127 0.0 36.9 55.3#
 141 0.0 11.8 17.6#



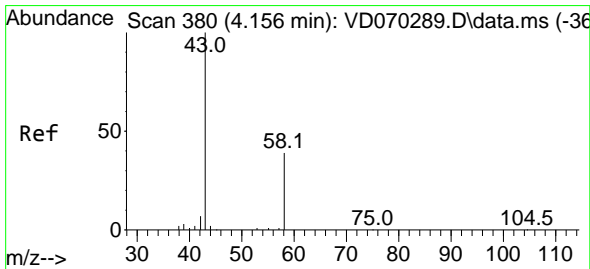
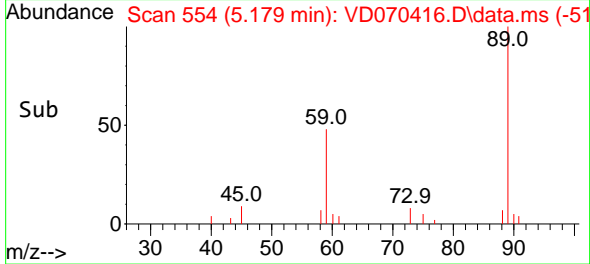
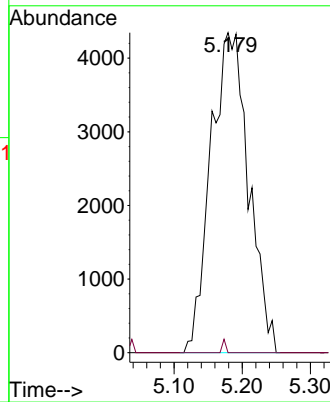


#11
 Tert butyl alcohol
 Concen: 37.788 ug/l
 RT: 5.179 min Scan# 554
 Delta R.T. -0.041 min
 Lab File: VD070416.D
 Acq: 22 Sep 2021 10:09

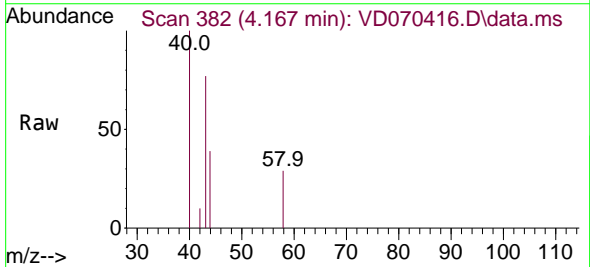
Instrument :
 MSVOA_D
 ClientSampled :
 VD0922SBL01



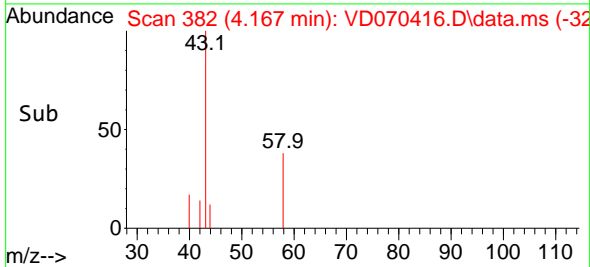
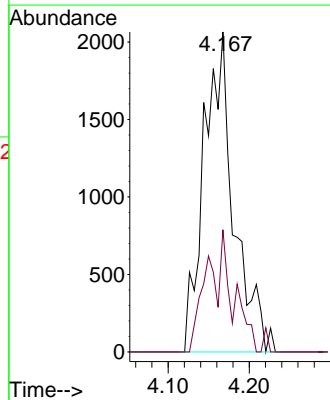
Tgt Ion: 59 Resp: 16809
 Ion Ratio Lower Upper
 59 100
 57 0.4 0.0 0.0#

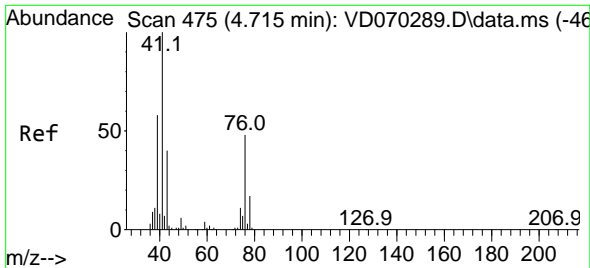


#16
 Acetone
 Concen: 7.527 ug/l
 RT: 4.167 min Scan# 382
 Delta R.T. 0.012 min
 Lab File: VD070416.D
 Acq: 22 Sep 2021 10:09



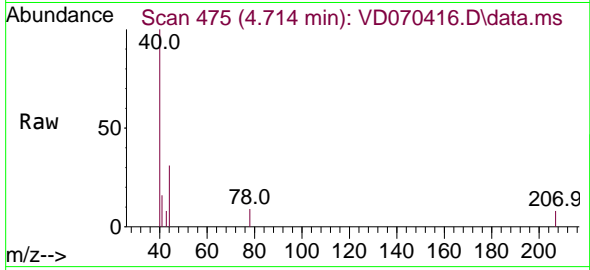
Tgt Ion: 43 Resp: 5287
 Ion Ratio Lower Upper
 43 100
 58 38.2 30.9 46.3



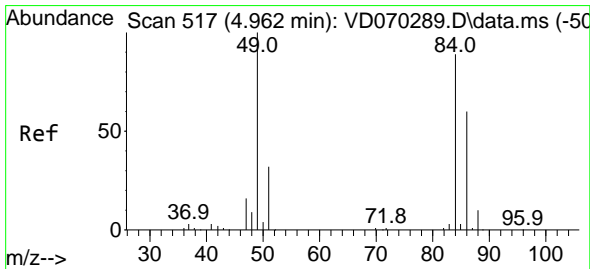
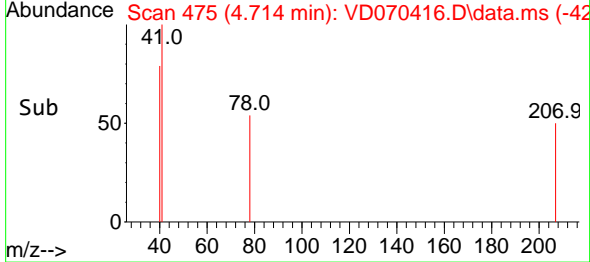
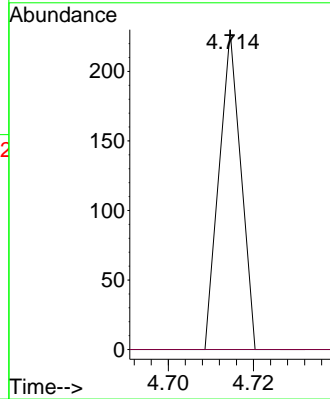


#18
 Methyl Acetate
 Concen: Below Cal
 RT: 4.714 min Scan# 475
 Delta R.T. -0.001 min
 Lab File: VD070416.D
 Acq: 22 Sep 2021 10:09

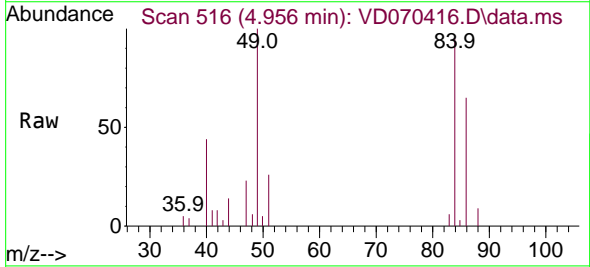
Instrument :
 MSVOA_D
 ClientSampleId :
 VD0922SBL01



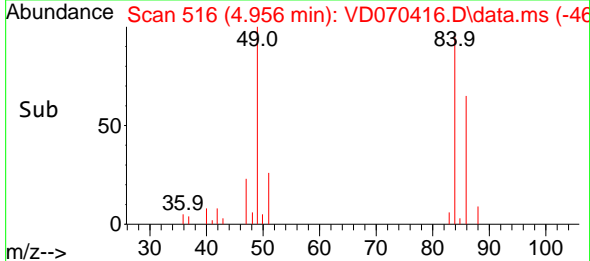
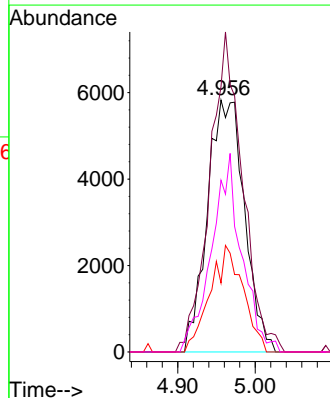
Tgt Ion: 43 Resp: 81
 Ion Ratio Lower Upper
 43 100
 74 0.0 21.6 32.4#

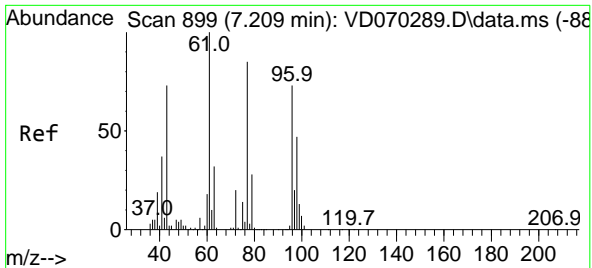


#20
 Methylene Chloride
 Concen: Below Cal
 RT: 4.956 min Scan# 516
 Delta R.T. -0.006 min
 Lab File: VD070416.D
 Acq: 22 Sep 2021 10:09



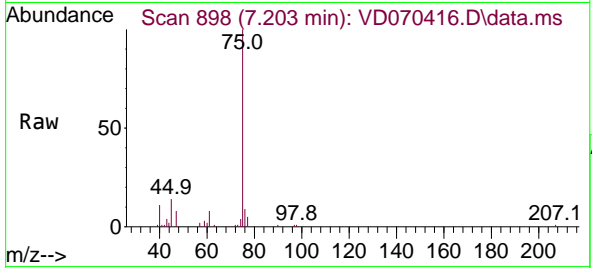
Tgt Ion: 84 Resp: 19410
 Ion Ratio Lower Upper
 84 100
 49 102.3 89.6 134.4
 51 27.4 28.6 43.0#
 86 68.2 53.5 80.3



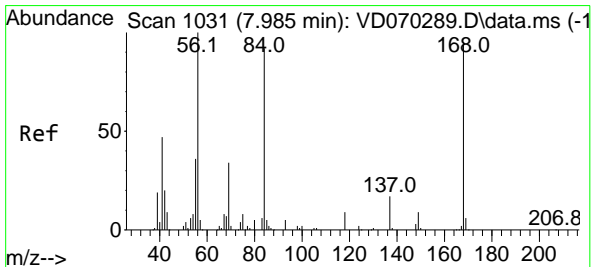
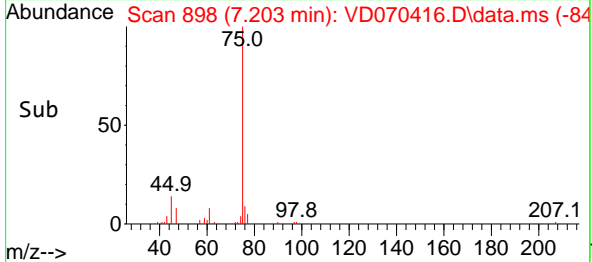
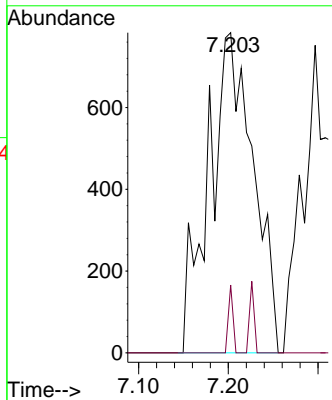


#25
 2-Butanone
 Concen: 2.882 ug/l
 RT: 7.203 min Scan# 898
 Delta R.T. -0.006 min
 Lab File: VD070416.D
 Acq: 22 Sep 2021 10:09

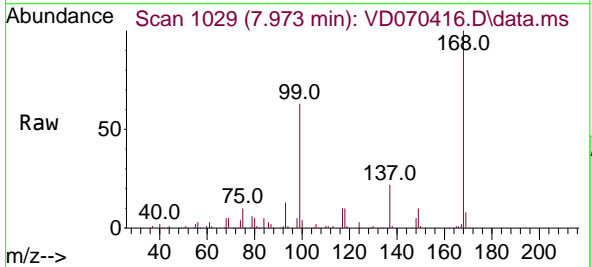
Instrument :
 MSVOA_D
 ClientSampled :
 VD0922SBL01



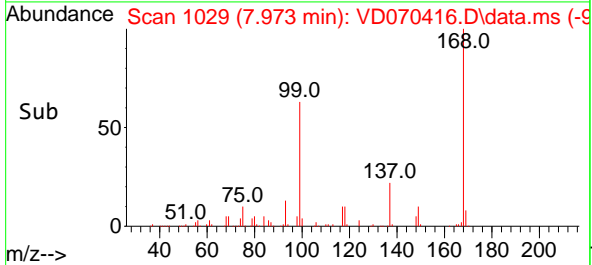
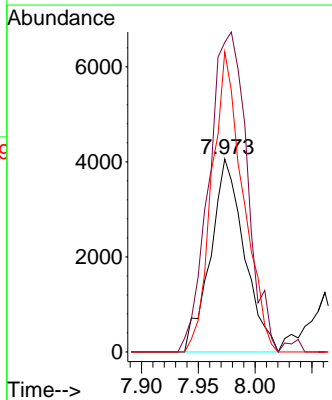
Tgt Ion: 43 Resp: 2695
 Ion Ratio Lower Upper
 43 100
 72 21.2 22.2 33.4#

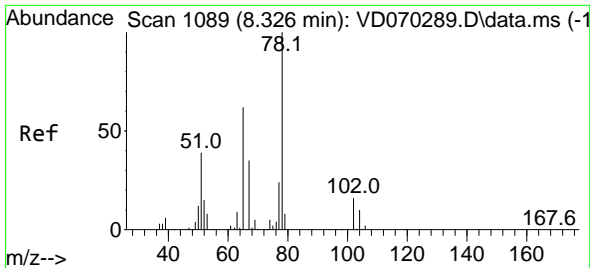


#31
 Cyclohexane
 Concen: 1.242 ug/l
 RT: 7.973 min Scan# 1029
 Delta R.T. -0.012 min
 Lab File: VD070416.D
 Acq: 22 Sep 2021 10:09



Tgt Ion: 56 Resp: 8415
 Ion Ratio Lower Upper
 56 100
 69 160.4 26.9 40.3#
 84 155.6 73.6 110.4#

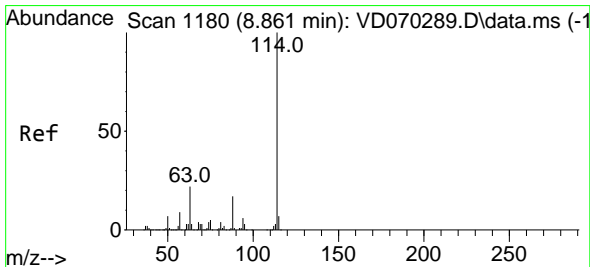
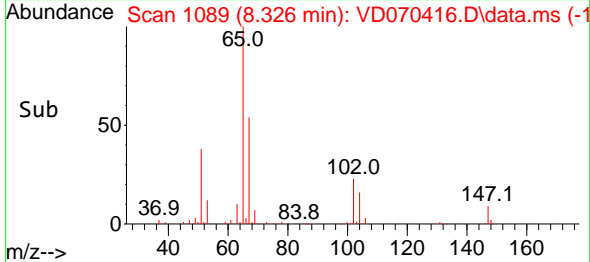
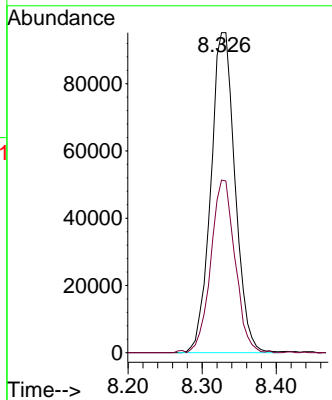
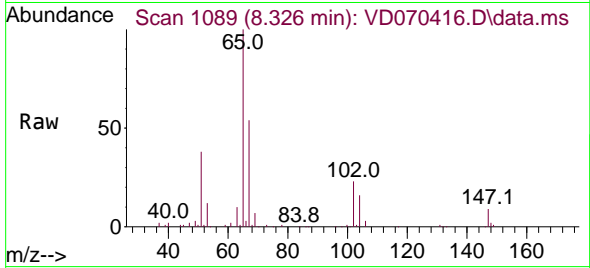




#33
 1,2-Dichloroethane-d4
 Concen: 55.013 ug/l
 RT: 8.326 min Scan# 1089
 Delta R.T. -0.000 min
 Lab File: VD070416.D
 Acq: 22 Sep 2021 10:09

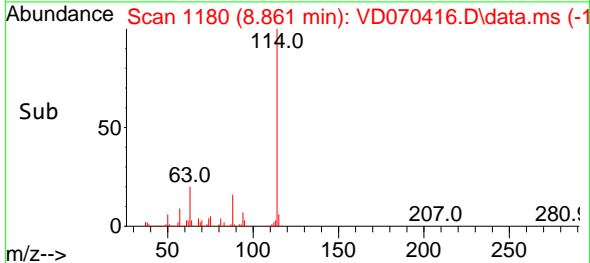
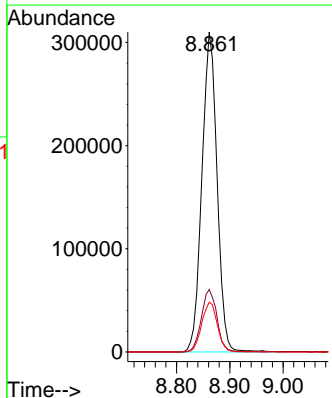
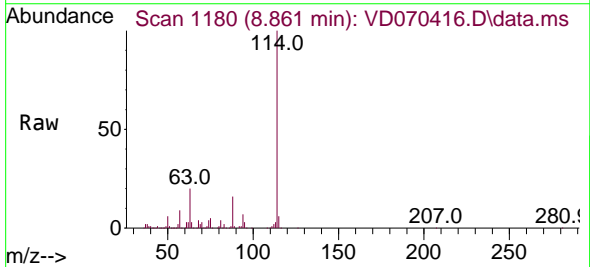
Instrument :
 MSVOA_D
 ClientSampled :
 VD0922SBL01

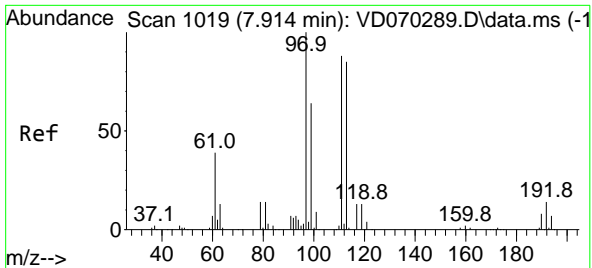
Tgt Ion: 65 Resp: 216431
 Ion Ratio Lower Upper
 65 100
 67 53.9 0.0 111.4



#34
 1,4-Difluorobenzene
 Concen: 50.000 ug/l
 RT: 8.861 min Scan# 1180
 Delta R.T. -0.000 min
 Lab File: VD070416.D
 Acq: 22 Sep 2021 10:09

Tgt Ion:114 Resp: 613248
 Ion Ratio Lower Upper
 114 100
 63 19.5 0.0 43.4
 88 15.5 0.0 33.4

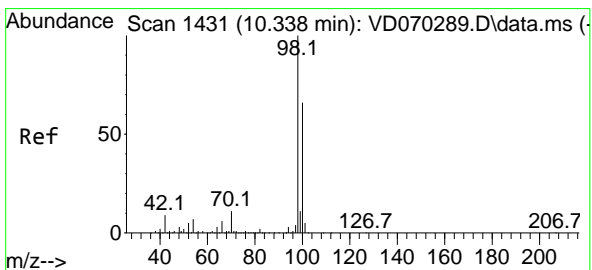
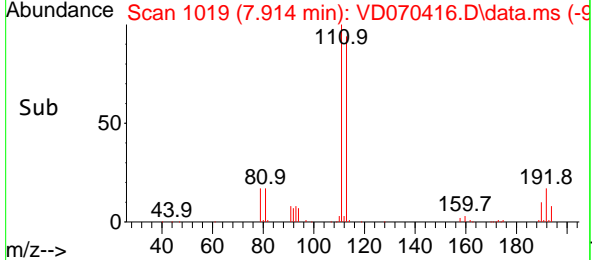
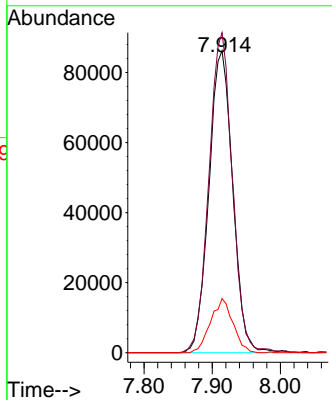
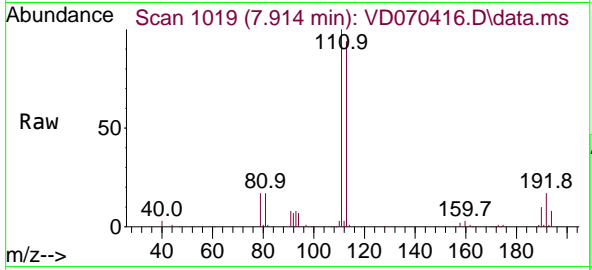




#35
 Dibromofluoromethane
 Concen: 47.995 ug/l
 RT: 7.914 min Scan# 1019
 Delta R.T. -0.000 min
 Lab File: VD070416.D
 Acq: 22 Sep 2021 10:09

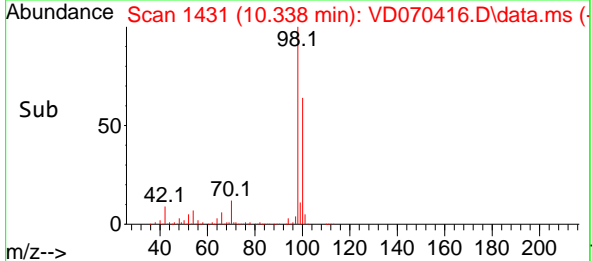
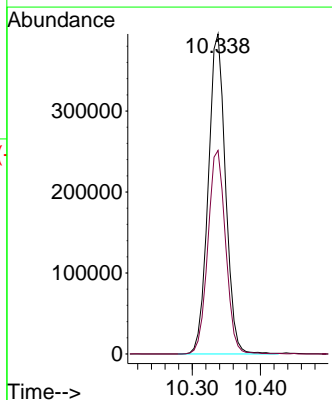
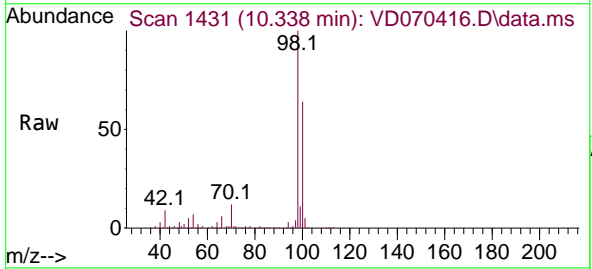
Instrument :
 MSVOA_D
ClientSampled :
 VD0922SBL01

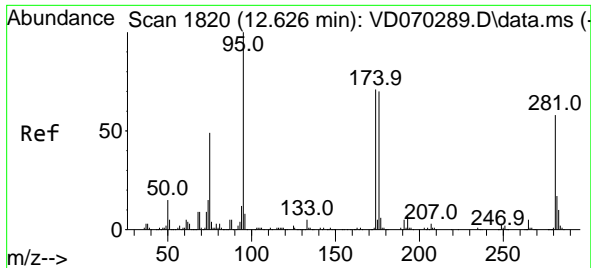
Tgt Ion	Resp	Lower	Upper
113	209506		
113	100		
111	104.5	81.4	122.2
192	16.8	13.0	19.6



#50
 Toluene-d8
 Concen: 44.015 ug/l
 RT: 10.338 min Scan# 1431
 Delta R.T. -0.000 min
 Lab File: VD070416.D
 Acq: 22 Sep 2021 10:09

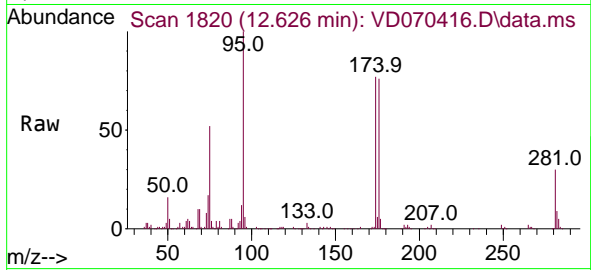
Tgt Ion	Resp	Lower	Upper
98	697589		
98	100		
100	65.2	52.0	78.0



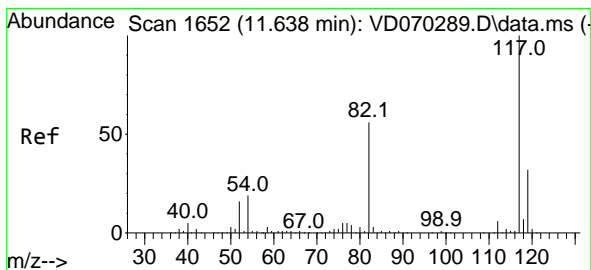
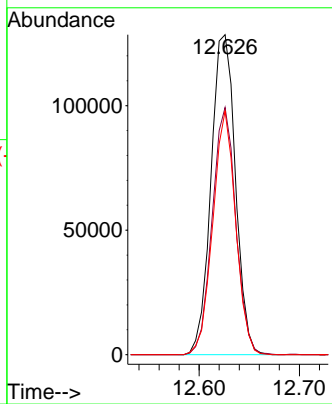
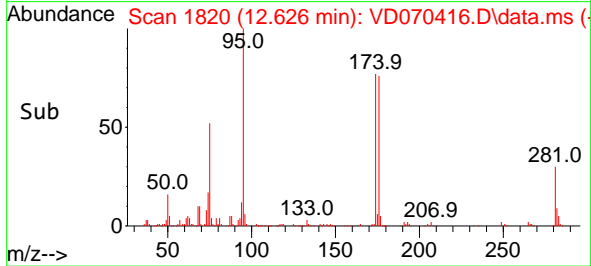


#62
 4-Bromofluorobenzene
 Concen: 39.202 ug/l
 RT: 12.626 min Scan# 1820
 Delta R.T. -0.000 min
 Lab File: VD070416.D
 Acq: 22 Sep 2021 10:09

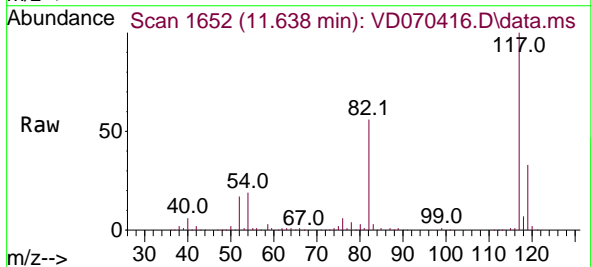
Instrument : MSVOA_D
 ClientSampleId : VD0922SBL01



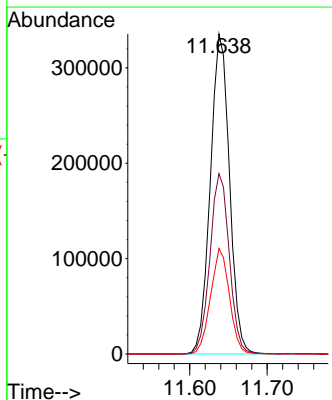
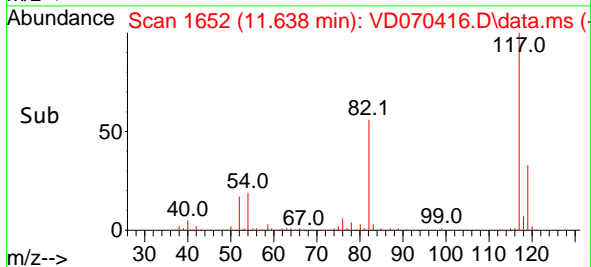
Tgt Ion: 95 Resp: 217138
 Ion Ratio Lower Upper
 95 100
 174 74.5 0.0 140.6
 176 71.1 0.0 137.4

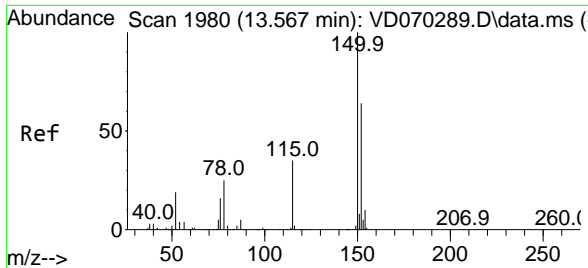


#63
 Chlorobenzene-d5
 Concen: 50.000 ug/l
 RT: 11.638 min Scan# 1652
 Delta R.T. -0.000 min
 Lab File: VD070416.D
 Acq: 22 Sep 2021 10:09



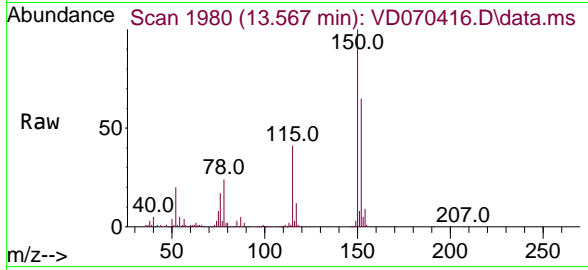
Tgt Ion: 117 Resp: 575463
 Ion Ratio Lower Upper
 117 100
 82 56.4 45.0 67.4
 119 32.9 25.2 37.8



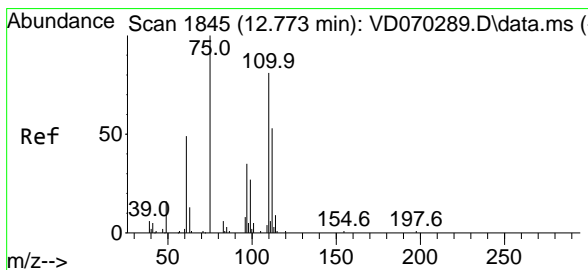
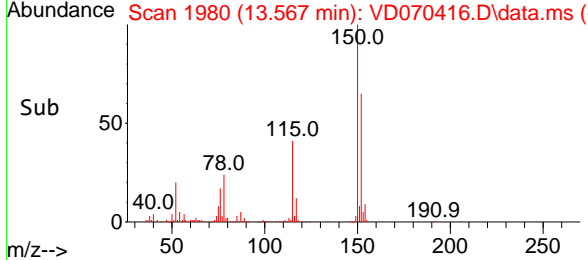
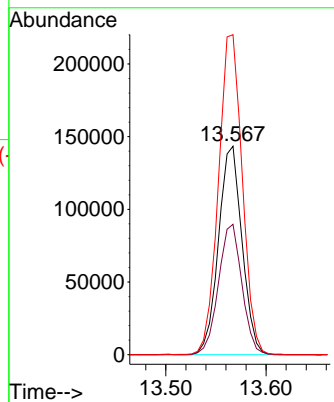


#72
 1,4-Dichlorobenzene-d4
 Concen: 50.000 ug/l
 RT: 13.567 min Scan# 1980
 Delta R.T. -0.000 min
 Lab File: VD070416.D
 Acq: 22 Sep 2021 10:09

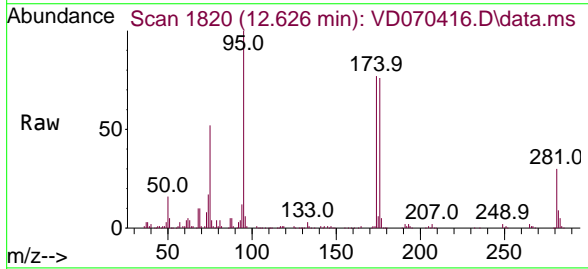
Instrument :
 MSVOA_D
ClientSampled :
 VD0922SBL01



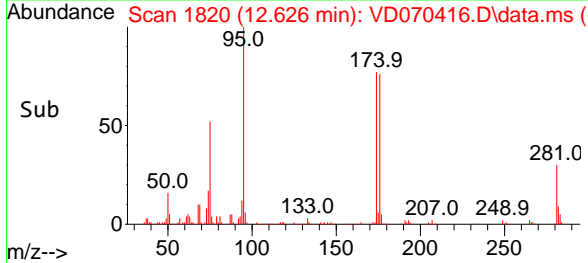
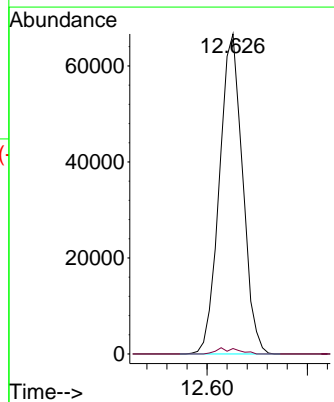
Tgt Ion:152 Resp: 233610
 Ion Ratio Lower Upper
 152 100
 115 62.3 32.1 96.3
 150 155.7 0.0 350.6

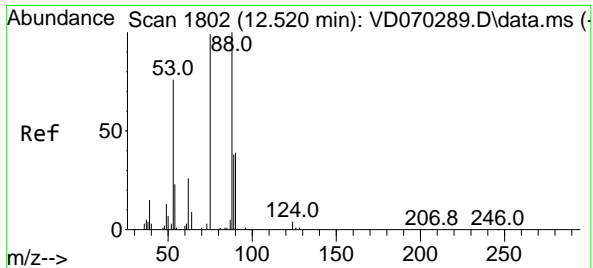


#76
 1,2,3-Trichloropropane
 Concen: 45.187 ug/l
 RT: 12.626 min Scan# 1820
 Delta R.T. -0.147 min
 Lab File: VD070416.D
 Acq: 22 Sep 2021 10:09



Tgt Ion: 75 Resp: 106776
 Ion Ratio Lower Upper
 75 100
 77 1.8 174.9 524.7#





#81
 trans-1,4-Dichloro-2-butene
 Concen: 113.219 ug/l
 RT: 12.626 min Scan# 1820
 Delta R.T. 0.106 min
 Lab File: VD070416.D
 Acq: 22 Sep 2021 10:09

Instrument :
 MSVOA_D
 ClientSampled :
 VD0922SBL01

Tgt Ion: 75 Resp: 106776

Ion	Ratio	Lower	Upper
75	100		
53	0.1	64.2	96.2#
89	0.6	35.6	53.4#

