

Data Path : Z:\voasrv\HPCHEM1\MSVOA_D\Data\VD092221\
 Data File : VD070431.D
 Acq On : 22 Sep 2021 17:19
 Operator : VA/SY
 Sample : M3867-01RE
 Misc : 9.54G/5.00ml/MSVOA_D/SOIL
 ALS Vial : 18 Sample Multiplier: 1

Instrument :
 MSVOA_D
 ClientSampleId :
 SB-1-(8.0-9.0)RE

Quant Time: Sep 23 05:34:23 2021
 Quant Method : Z:\voasrv\HPCHEM1\MSVOA_D\Method\82D090821S.M
 Quant Title : SW846 8260
 QLast Update : Thu Sep 09 03:07:09 2021
 Response via : Initial Calibration

Compound	R.T.	QIon	Response	Conc	Units	Dev(Min)

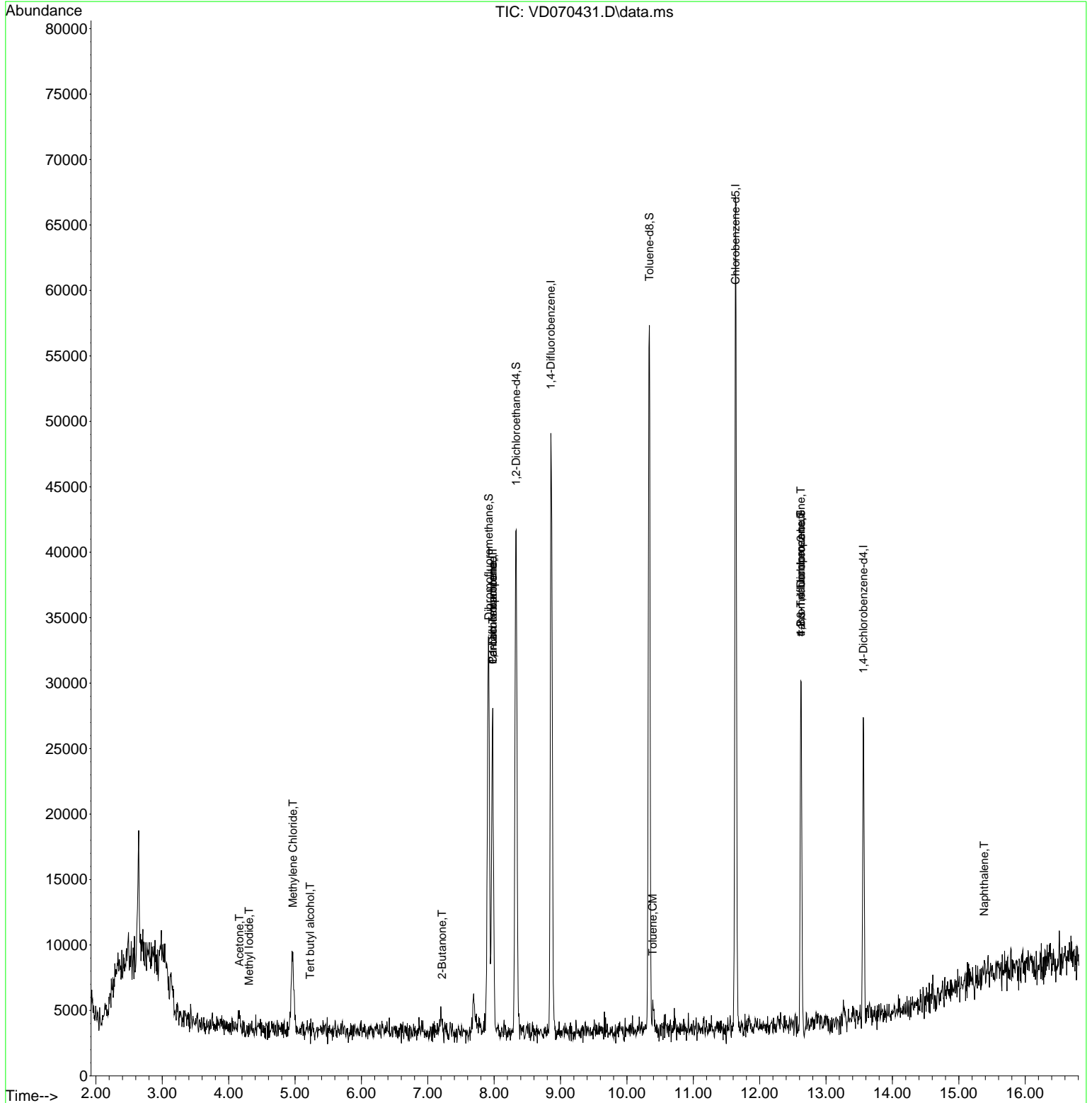
Internal Standards						
1) Pentafluorobenzene	7.979	168	16274	50.000	ug/l	0.00
34) 1,4-Difluorobenzene	8.855	114	39923	50.000	ug/l	0.00
63) Chlorobenzene-d5	11.638	117	36668	50.000	ug/l	0.00
72) 1,4-Dichlorobenzene-d4	13.561	152	6423	50.000	ug/l	0.00
System Monitoring Compounds						
33) 1,2-Dichloroethane-d4	8.332	65	30591	146.395	ug/l	0.00
Spiked Amount	50.000	Range 50 - 163	Recovery	=	292.800%#	
35) Dibromofluoromethane	7.920	113	21302	74.960	ug/l	0.00
Spiked Amount	50.000	Range 54 - 147	Recovery	=	149.920%#	
50) Toluene-d8	10.338	98	40495	39.248	ug/l	0.00
Spiked Amount	50.000	Range 49 - 140	Recovery	=	78.500%	
62) 4-Bromofluorobenzene	12.620	95	9628	26.700	ug/l	0.00
Spiked Amount	50.000	Range 25 - 144	Recovery	=	53.400%	
Target Compounds						
						Qvalue
3) Chloromethane	2.209	50	361	Below Cal	#	1
5) Bromomethane	2.779	94	583	Below Cal	#	60
6) Chloroethane	2.638	64	57	Below Cal	#	43
10) Methyl Iodide	4.309	142	114	1.583	ug/l #	39
11) Tert butyl alcohol	5.226	59	432	18.284	ug/l #	100
16) Acetone	4.161	43	2267	60.766	ug/l #	82
18) Methyl Acetate	4.644	43	78	Below Cal	#	48
20) Methylene Chloride	4.967	84	5166	17.500	ug/l #	77
25) 2-Butanone	7.214	43	60	1.208	ug/l #	47
36) 1,1-Dichloropropene	7.979	75	1542	3.614	ug/l #	41
38) Carbon Tetrachloride	7.979	117	1923	4.557	ug/l #	12
52) Toluene	10.391	92	904	1.196	ug/l #	68
76) 1,2,3-Trichloropropane	12.620	75	4470	68.802	ug/l #	1
81) trans-1,4-Dichloro-2-b...	12.620	75	4470	172.389	ug/l #	17
95) Naphthalene	15.384	128	499	2.663	ug/l #	69

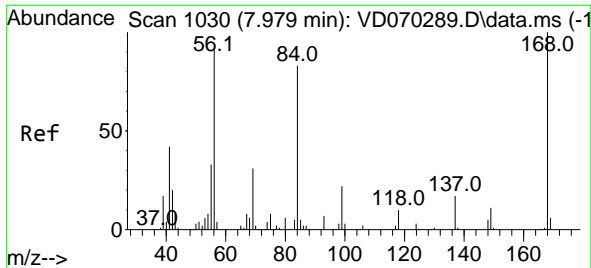
(#) = qualifier out of range (m) = manual integration (+) = signals summed

Data Path : Z:\voasrv\HPCHEM1\MSVOA_D\Data\VD092221\
 Data File : VD070431.D
 Acq On : 22 Sep 2021 17:19
 Operator : VA/SY
 Sample : M3867-01RE
 Misc : 9.54G/5.00ml/MSVOA_D/SOIL
 ALS Vial : 18 Sample Multiplier: 1

Instrument :
 MSVOA_D
Client Sampled :
 SB-1-(8.0-9.0)RE

Quant Time: Sep 23 05:34:23 2021
 Quant Method : Z:\voasrv\HPCHEM1\MSVOA_D\Method\82D090821S.M
 Quant Title : SW846 8260
 QLast Update : Thu Sep 09 03:07:09 2021
 Response via : Initial Calibration

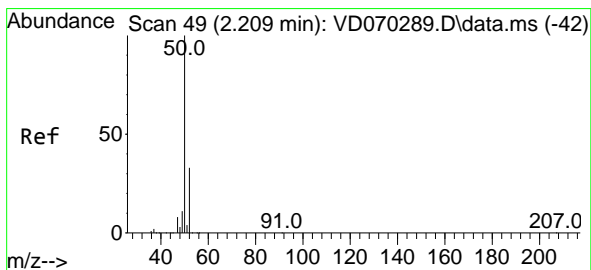
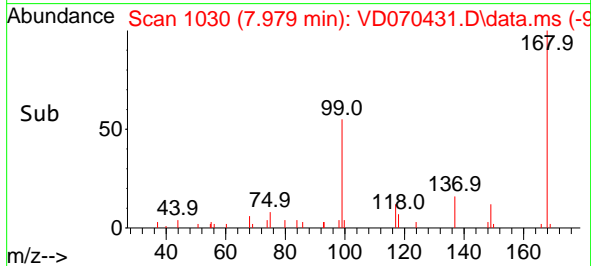
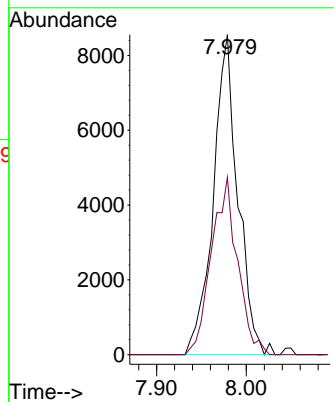
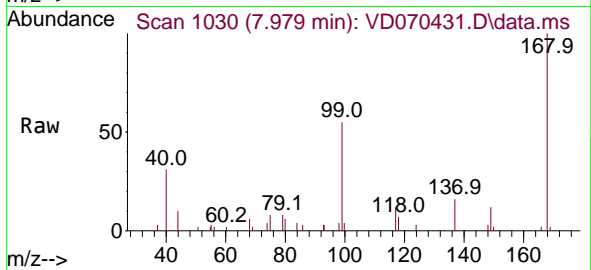




#1
 Pentafluorobenzene
 Concen: 50.000 ug/l
 RT: 7.979 min Scan# 1030
 Delta R.T. -0.000 min
 Lab File: VD070431.D
 Acq: 22 Sep 2021 17:19

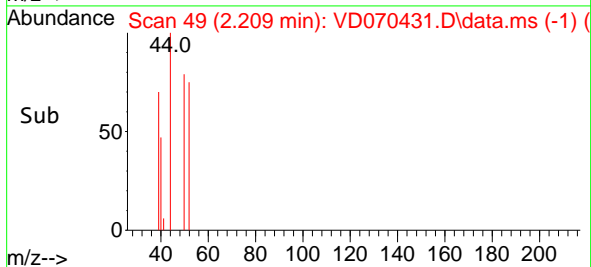
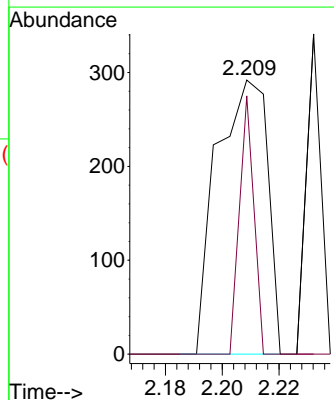
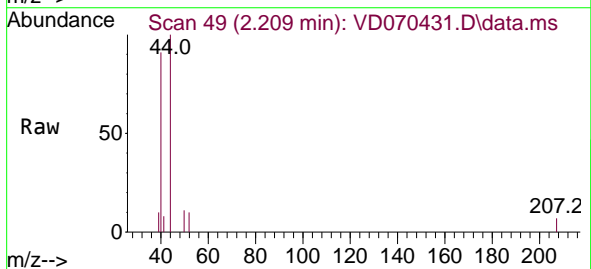
Instrument :
 MSVOA_D
 ClientSampled :
 SB-1-(8.0-9.0)RE

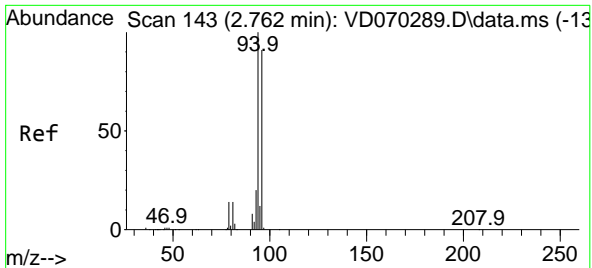
Tgt Ion:168 Resp: 16274
 Ion Ratio Lower Upper
 168 100
 99 55.5 50.8 76.2



#3
 Chloromethane
 Concen: Below Cal
 RT: 2.209 min Scan# 49
 Delta R.T. -0.000 min
 Lab File: VD070431.D
 Acq: 22 Sep 2021 17:19

Tgt Ion: 50 Resp: 361
 Ion Ratio Lower Upper
 50 100
 52 94.2 26.2 39.2#

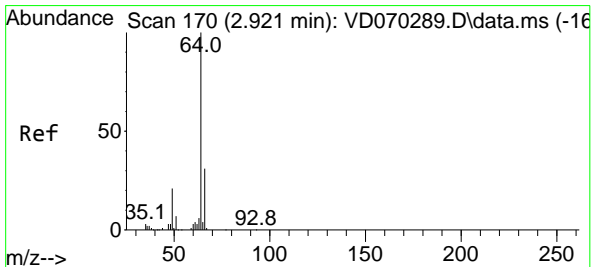
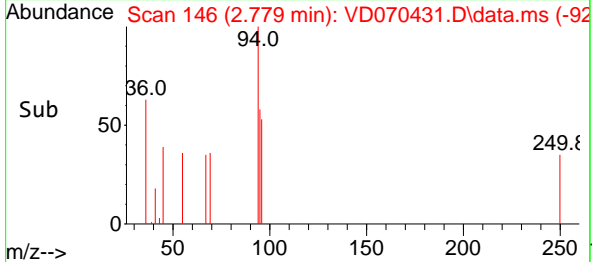
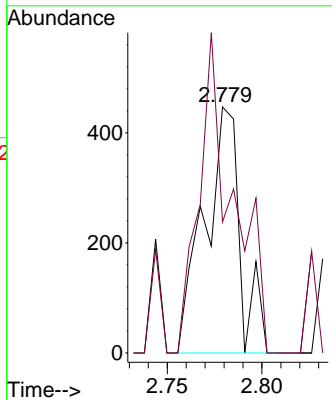
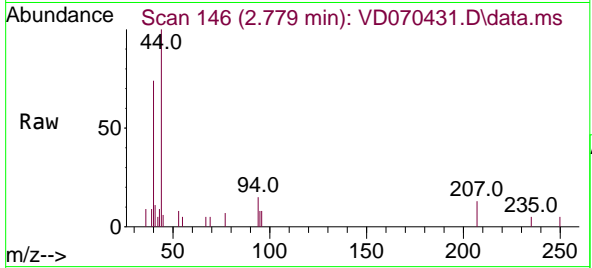




#5
 Bromomethane
 Concen: Below Cal
 RT: 2.779 min Scan# 146
 Delta R.T. 0.017 min
 Lab File: VD070431.D
 Acq: 22 Sep 2021 17:19

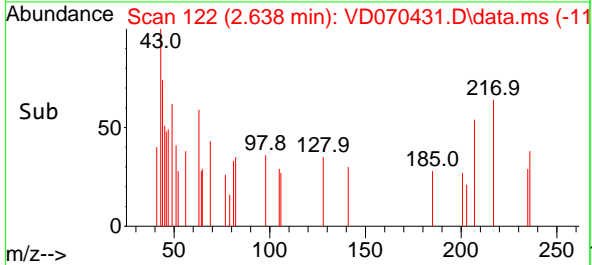
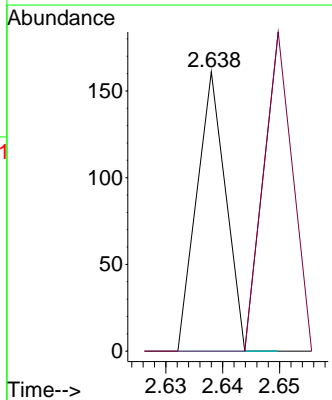
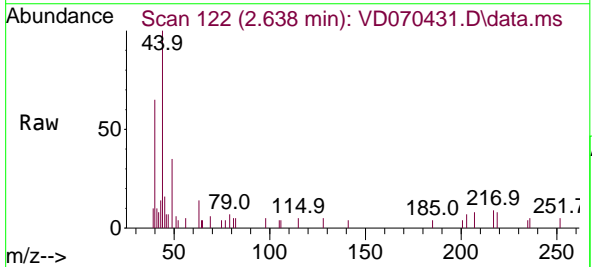
Instrument :
 MSVOA_D
 ClientSampled :
 SB-1-(8.0-9.0)RE

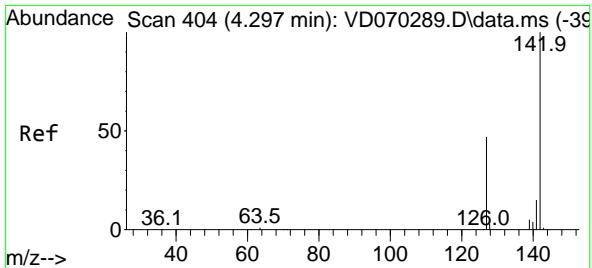
Tgt Ion: 94 Resp: 583
 Ion Ratio Lower Upper
 94 100
 96 53.2 73.0 109.6#



#6
 Chloroethane
 Concen: Below Cal
 RT: 2.638 min Scan# 122
 Delta R.T. -0.283 min
 Lab File: VD070431.D
 Acq: 22 Sep 2021 17:19

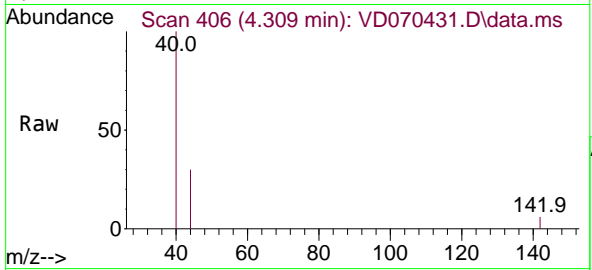
Tgt Ion: 64 Resp: 57
 Ion Ratio Lower Upper
 64 100
 66 0.0 25.0 37.4#



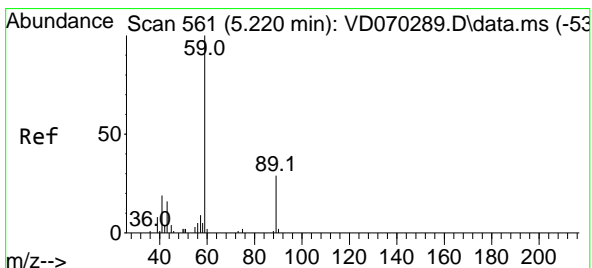
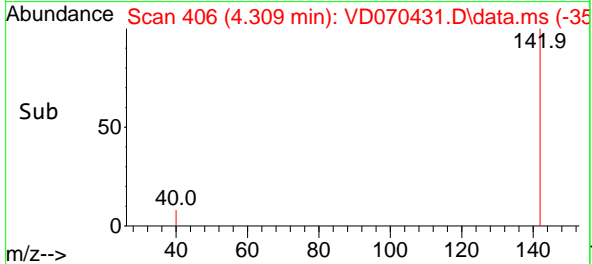
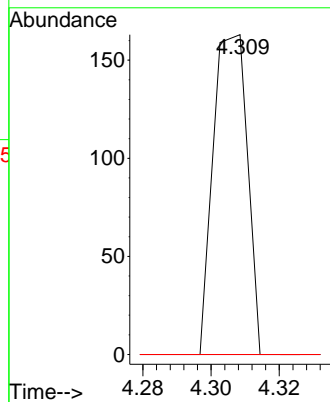


#10
 Methyl Iodide
 Concen: 1.583 ug/l
 RT: 4.309 min Scan# 406
 Delta R.T. 0.012 min
 Lab File: VD070431.D
 Acq: 22 Sep 2021 17:19

Instrument :
 MSVOA_D
 ClientSampled :
 SB-1-(8.0-9.0)RE

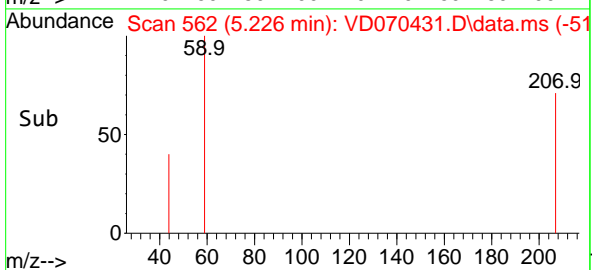
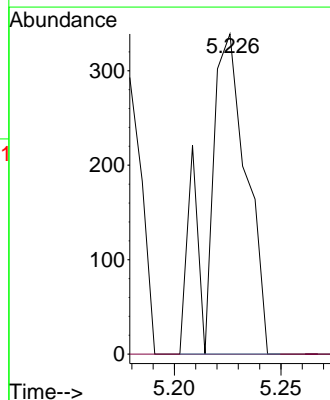
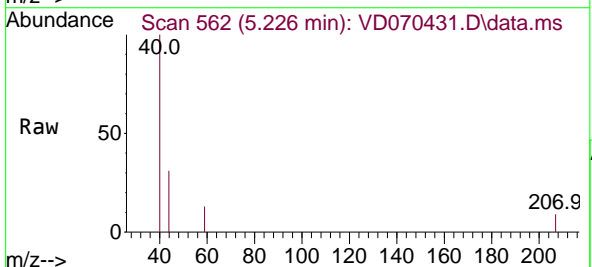


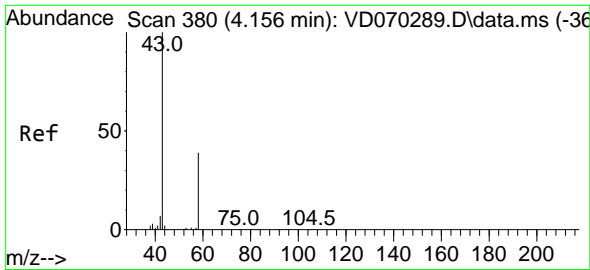
Tgt Ion:142 Resp: 114
 Ion Ratio Lower Upper
 142 100
 127 0.0 36.9 55.3#
 141 0.0 11.8 17.6#



#11
 Tert butyl alcohol
 Concen: 18.284 ug/l
 RT: 5.226 min Scan# 562
 Delta R.T. 0.006 min
 Lab File: VD070431.D
 Acq: 22 Sep 2021 17:19

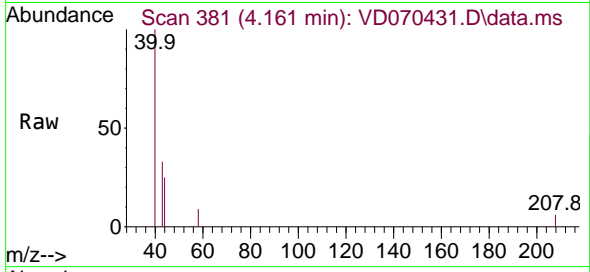
Tgt Ion: 59 Resp: 432
 Ion Ratio Lower Upper
 59 100
 57 0.0 0.0 0.0



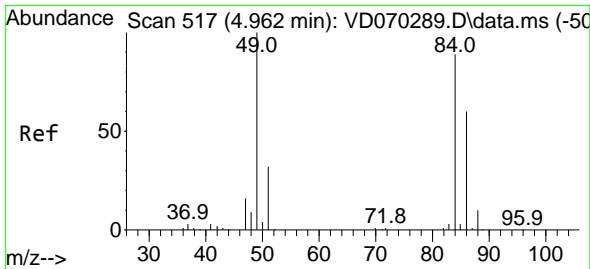
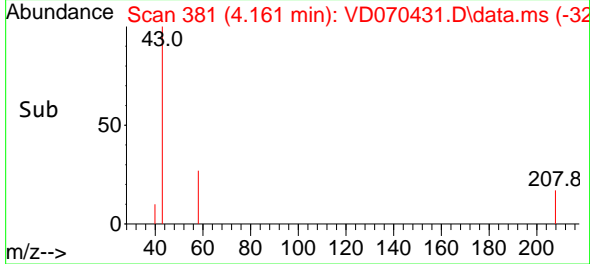
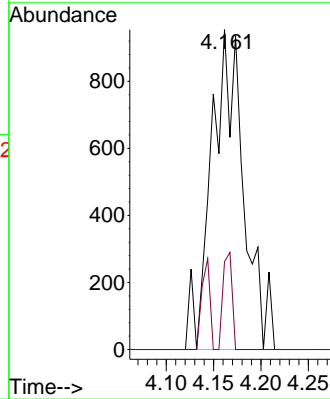


#16
 Acetone
 Concen: 60.766 ug/l
 RT: 4.161 min Scan# 381
 Delta R.T. 0.006 min
 Lab File: VD070431.D
 Acq: 22 Sep 2021 17:19

Instrument :
 MSVOA_D
 ClientSampleId :
 SB-1-(8.0-9.0)RE

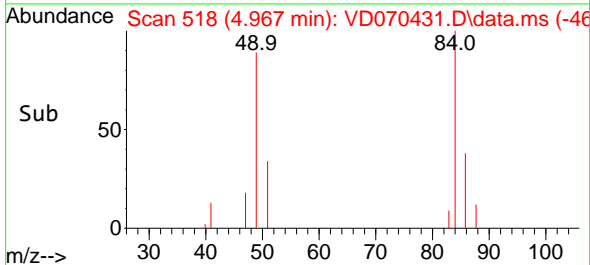
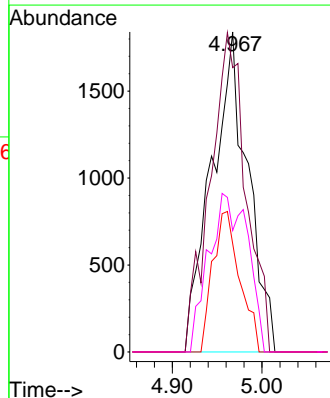
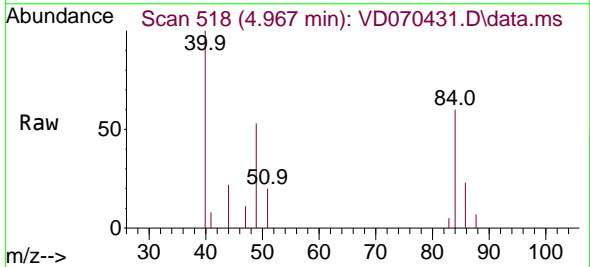


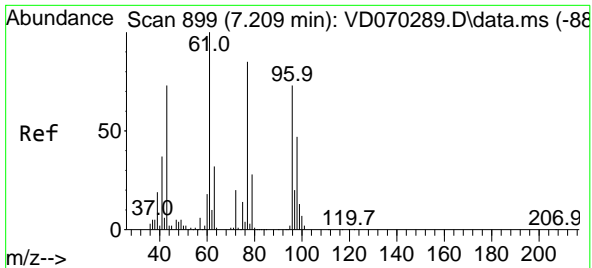
Tgt Ion: 43 Resp: 2267
 Ion Ratio Lower Upper
 43 100
 58 27.5 30.9 46.3#



#20
 Methylene Chloride
 Concen: 17.500 ug/l
 RT: 4.967 min Scan# 518
 Delta R.T. 0.005 min
 Lab File: VD070431.D
 Acq: 22 Sep 2021 17:19

Tgt Ion: 84 Resp: 5166
 Ion Ratio Lower Upper
 84 100
 49 88.9 89.6 134.4#
 51 33.9 28.6 43.0
 86 37.9 53.5 80.3#

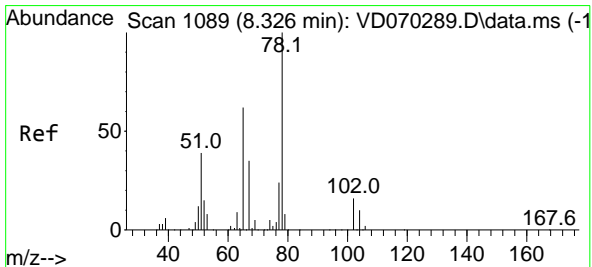
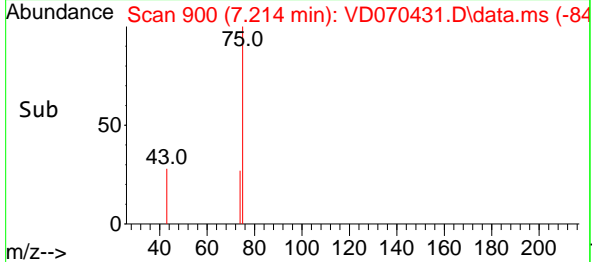
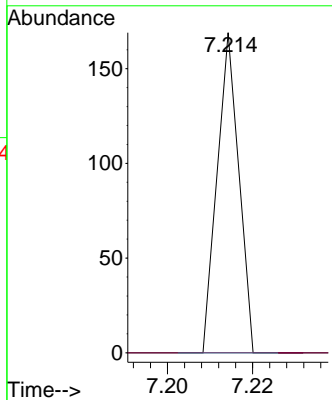
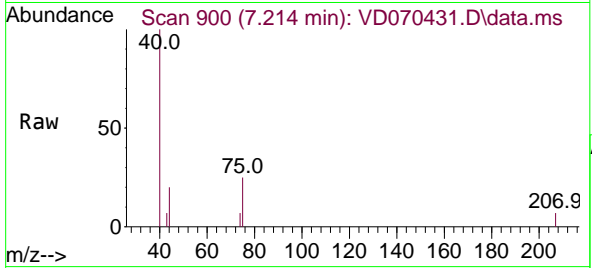




#25
 2-Butanone
 Concen: 1.208 ug/l
 RT: 7.214 min Scan# 900
 Delta R.T. 0.006 min
 Lab File: VD070431.D
 Acq: 22 Sep 2021 17:19

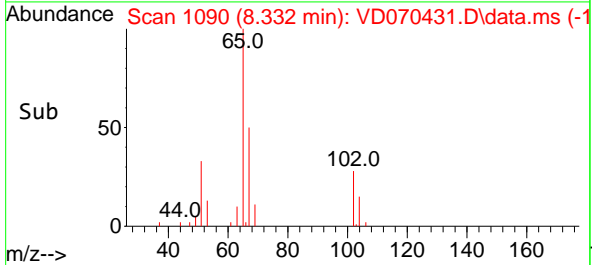
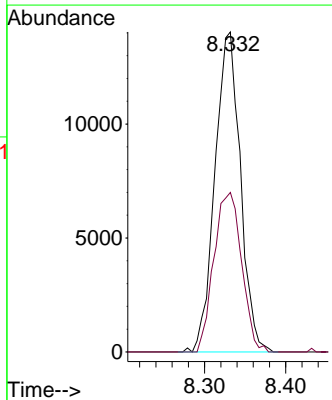
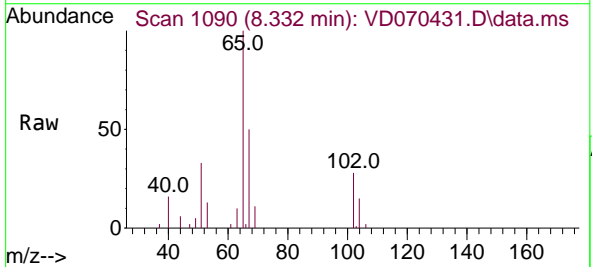
Instrument :
 MSVOA_D
 ClientSampled :
 SB-1-(8.0-9.0)RE

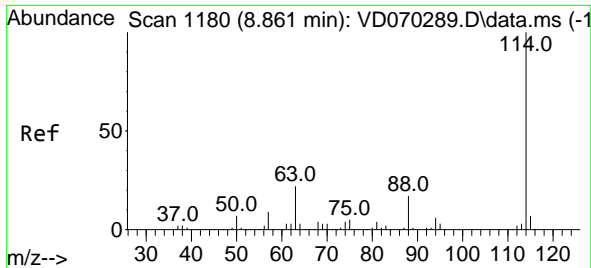
Tgt Ion: 43 Resp: 60
 Ion Ratio Lower Upper
 43 100
 72 0.0 22.2 33.4#



#33
 1,2-Dichloroethane-d4
 Concen: 146.395 ug/l
 RT: 8.332 min Scan# 1090
 Delta R.T. 0.006 min
 Lab File: VD070431.D
 Acq: 22 Sep 2021 17:19

Tgt Ion: 65 Resp: 30591
 Ion Ratio Lower Upper
 65 100
 67 54.2 0.0 111.4

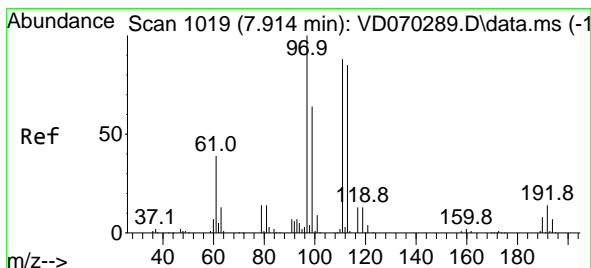
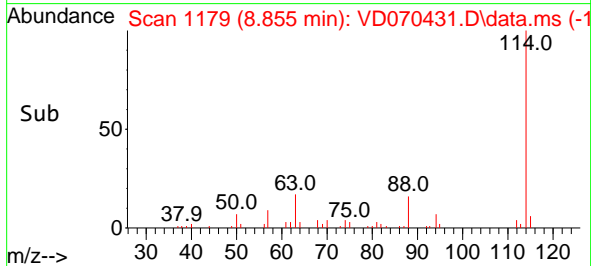
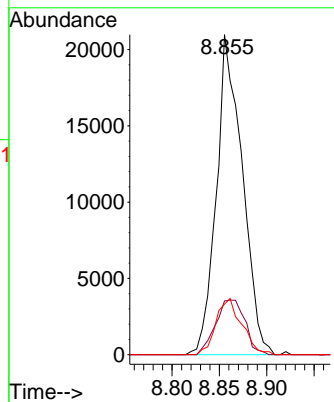
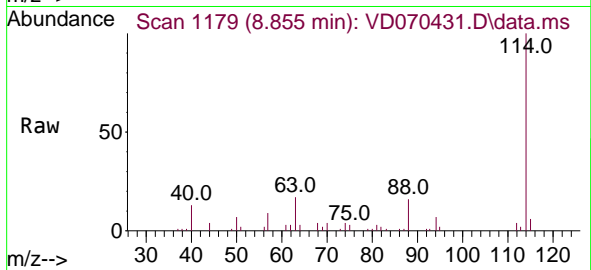




#34
 1,4-Difluorobenzene
 Concen: 50.000 ug/l
 RT: 8.855 min Scan# 1179
 Delta R.T. -0.006 min
 Lab File: VD070431.D
 Acq: 22 Sep 2021 17:19

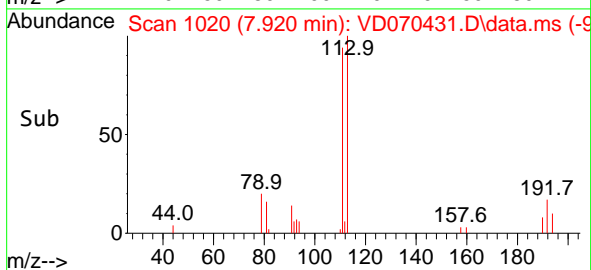
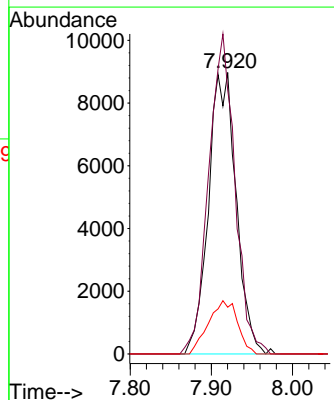
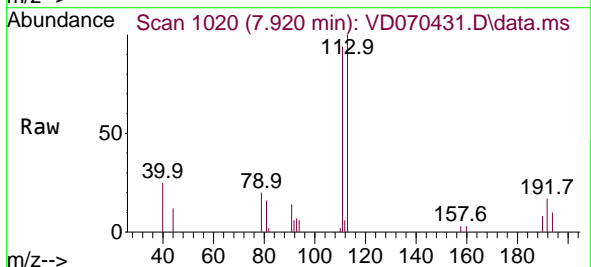
Instrument :
 MSVOA_D
 ClientSampleId :
 SB-1-(8.0-9.0)RE

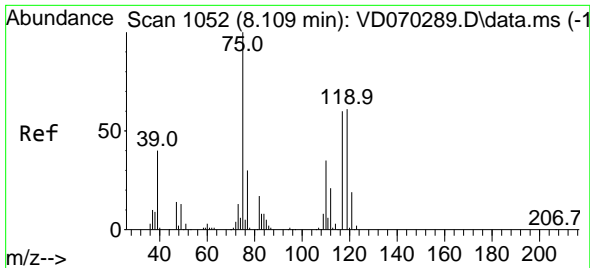
Tgt Ion	Resp	Lower	Upper
114	39923		
63	16.8	0.0	43.4
88	15.8	0.0	33.4



#35
 Dibromofluoromethane
 Concen: 74.960 ug/l
 RT: 7.920 min Scan# 1020
 Delta R.T. 0.006 min
 Lab File: VD070431.D
 Acq: 22 Sep 2021 17:19

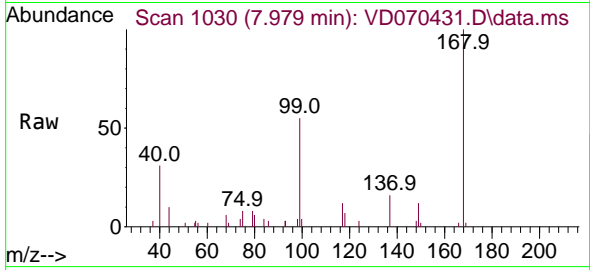
Tgt Ion	Resp	Lower	Upper
113	21302		
111	107.9	81.4	122.2
192	19.9	13.0	19.6#



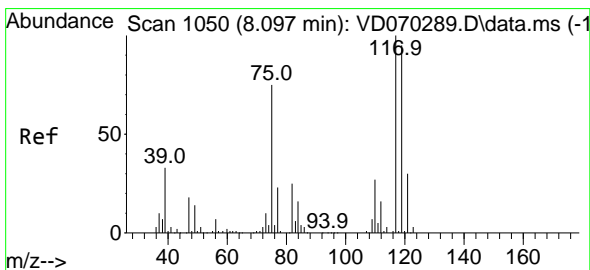
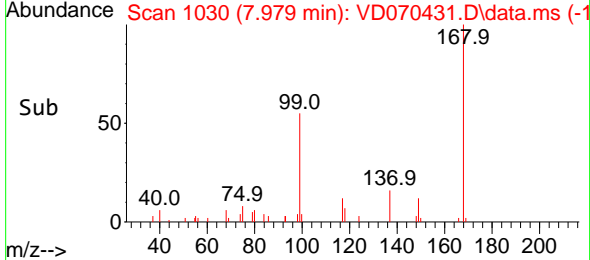
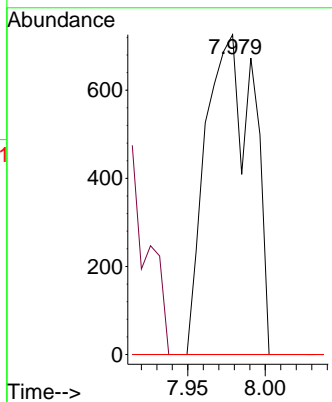


#36
 1,1-Dichloropropene
 Concen: 3.614 ug/l
 RT: 7.979 min Scan# 1030
 Delta R.T. -0.130 min
 Lab File: VD070431.D
 Acq: 22 Sep 2021 17:19

Instrument : MSVOA_D
 ClientSampled : SB-1-(8.0-9.0)RE

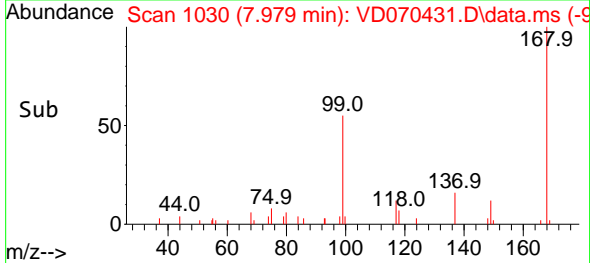
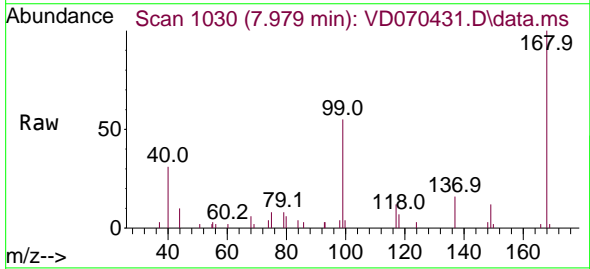
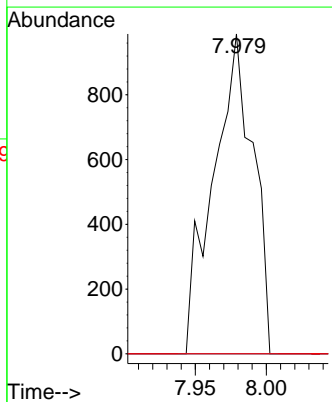


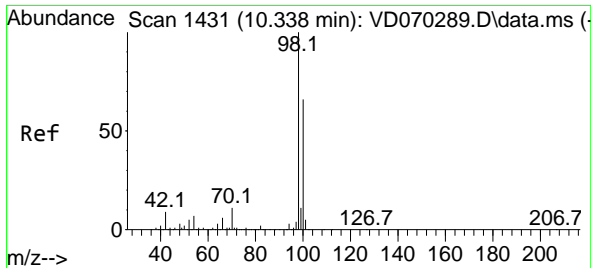
Tgt Ion: 75 Resp: 1542
 Ion Ratio Lower Upper
 75 100
 110 0.0 17.9 53.7#
 77 0.0 25.3 37.9#



#38
 Carbon Tetrachloride
 Concen: 4.557 ug/l
 RT: 7.979 min Scan# 1030
 Delta R.T. -0.118 min
 Lab File: VD070431.D
 Acq: 22 Sep 2021 17:19

Tgt Ion:117 Resp: 1923
 Ion Ratio Lower Upper
 117 100
 119 0.0 76.1 114.1#
 121 0.0 23.8 35.6#

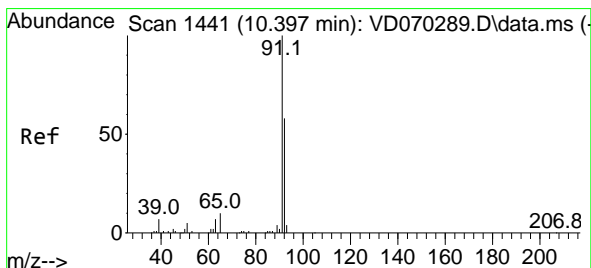
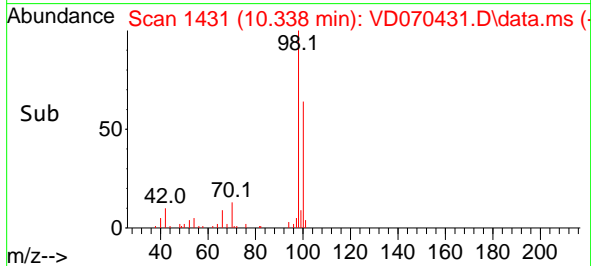
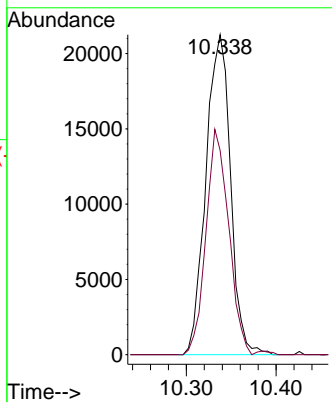
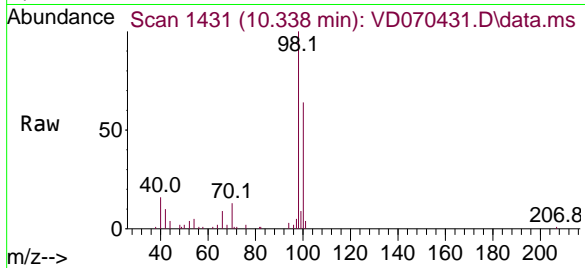




#50
 Toluene-d8
 Concen: 39.248 ug/l
 RT: 10.338 min Scan# 1431
 Delta R.T. -0.000 min
 Lab File: VD070431.D
 Acq: 22 Sep 2021 17:19

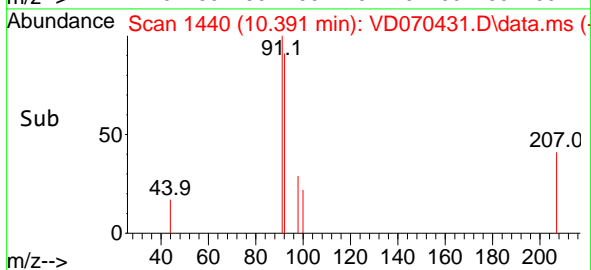
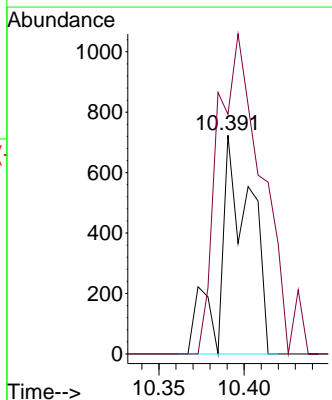
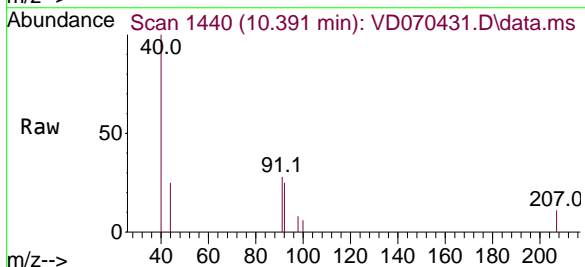
Instrument :
 MSVOA_D
 ClientSampled :
 SB-1-(8.0-9.0)RE

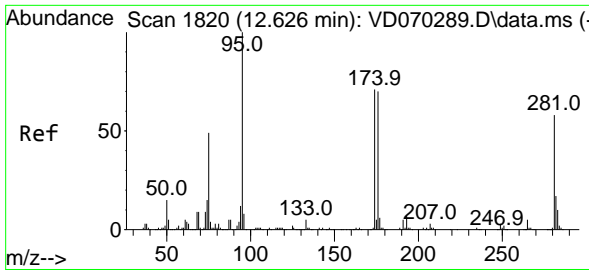
Tgt Ion: 98 Resp: 40495
 Ion Ratio Lower Upper
 98 100
 100 65.2 52.0 78.0



#52
 Toluene
 Concen: 1.196 ug/l
 RT: 10.391 min Scan# 1440
 Delta R.T. -0.006 min
 Lab File: VD070431.D
 Acq: 22 Sep 2021 17:19

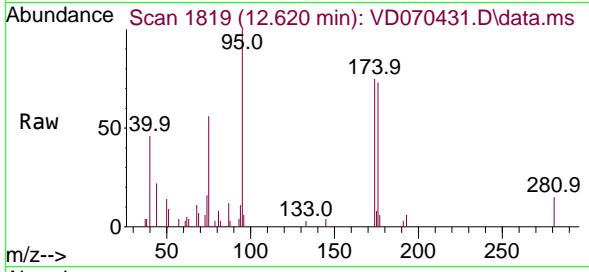
Tgt Ion: 92 Resp: 904
 Ion Ratio Lower Upper
 92 100
 91 214.5 136.2 204.2#



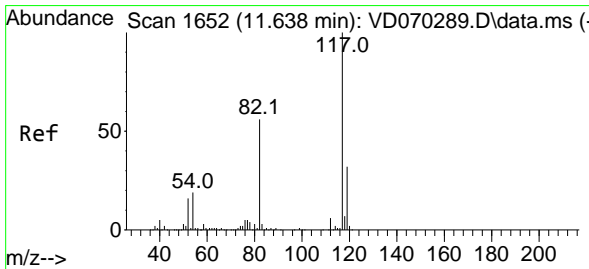
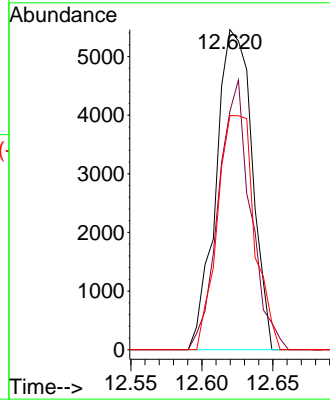
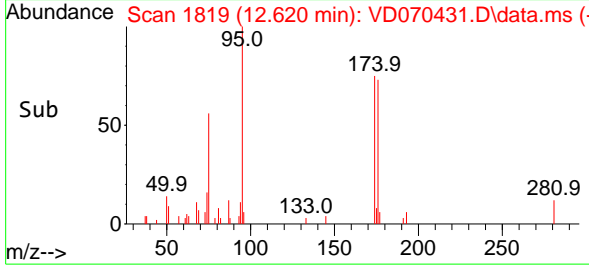


#62
 4-Bromofluorobenzene
 Concen: 26.700 ug/l
 RT: 12.620 min Scan# 1819
 Delta R.T. -0.006 min
 Lab File: VD070431.D
 Acq: 22 Sep 2021 17:19

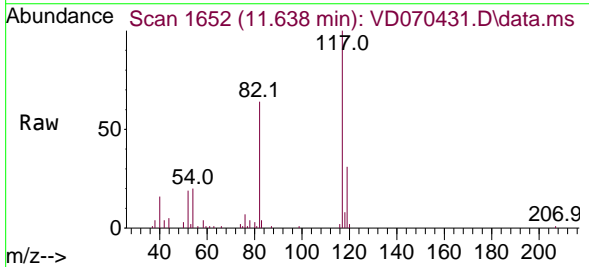
Instrument :
 MSVOA_D
 ClientSampled :
 SB-1-(8.0-9.0)RE



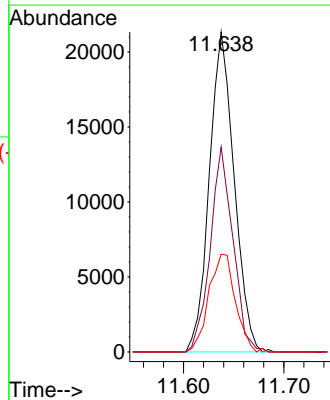
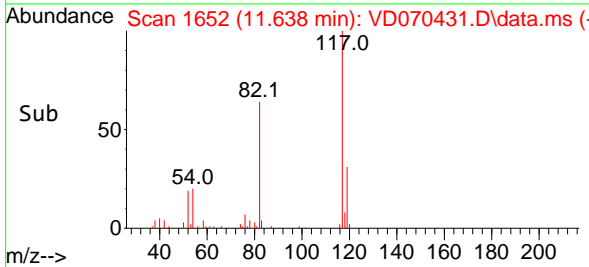
Tgt Ion: 95 Resp: 9628
 Ion Ratio Lower Upper
 95 100
 174 74.9 0.0 140.6
 176 75.1 0.0 137.4

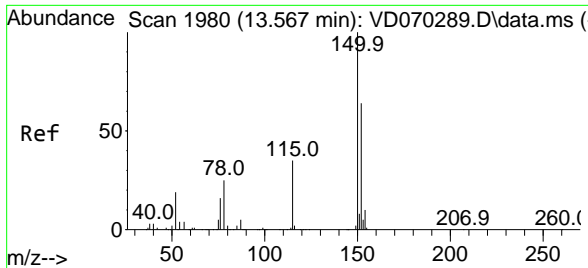


#63
 Chlorobenzene-d5
 Concen: 50.000 ug/l
 RT: 11.638 min Scan# 1652
 Delta R.T. -0.000 min
 Lab File: VD070431.D
 Acq: 22 Sep 2021 17:19



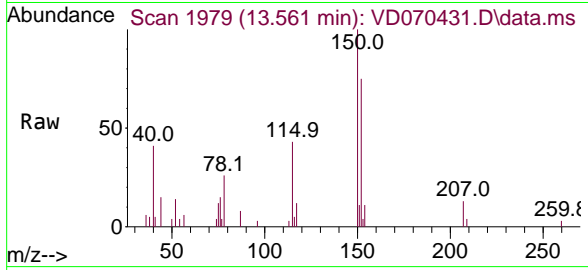
Tgt Ion: 117 Resp: 36668
 Ion Ratio Lower Upper
 117 100
 82 64.0 45.0 67.4
 119 30.5 25.2 37.8



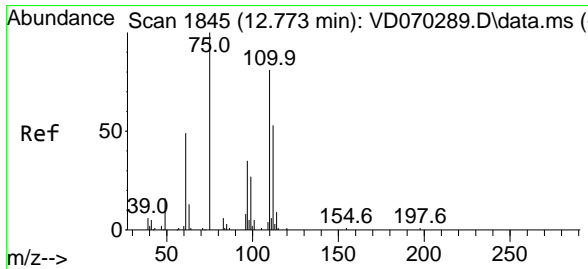
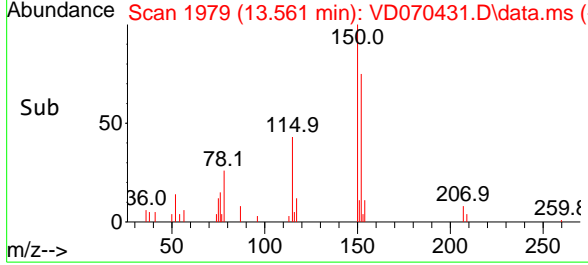
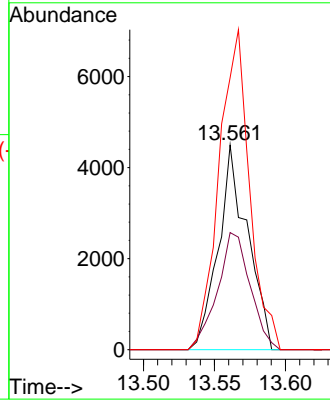


#72
 1,4-Dichlorobenzene-d4
 Concen: 50.000 ug/l
 RT: 13.561 min Scan# 1979
 Delta R.T. -0.006 min
 Lab File: VD070431.D
 Acq: 22 Sep 2021 17:19

Instrument :
 MSVOA_D
 ClientSampled :
 SB-1-(8.0-9.0)RE

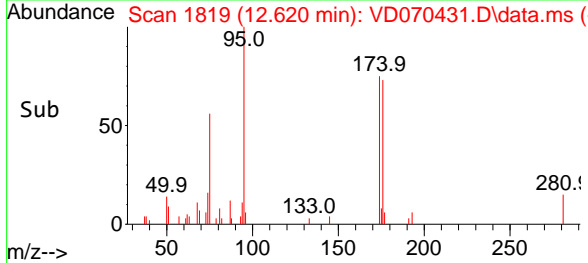
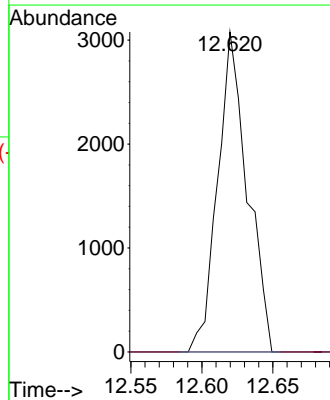
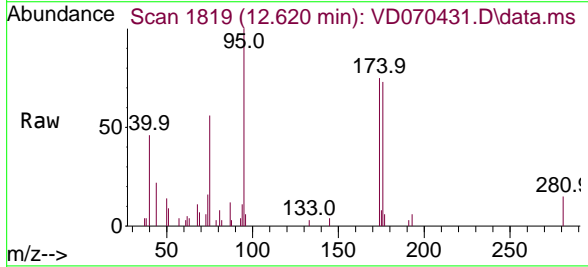


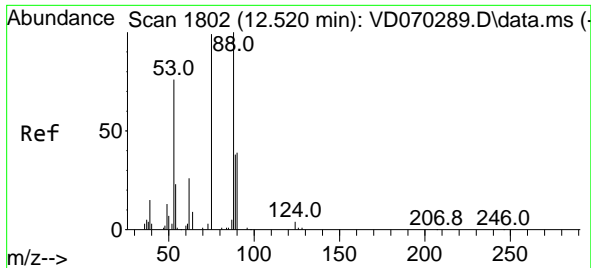
Tgt Ion:152 Resp: 6423
 Ion Ratio Lower Upper
 152 100
 115 64.2 32.1 96.3
 150 163.3 0.0 350.6



#76
 1,2,3-Trichloropropane
 Concen: 68.802 ug/l
 RT: 12.620 min Scan# 1819
 Delta R.T. -0.153 min
 Lab File: VD070431.D
 Acq: 22 Sep 2021 17:19

Tgt Ion: 75 Resp: 4470
 Ion Ratio Lower Upper
 75 100
 77 0.0 174.9 524.7#

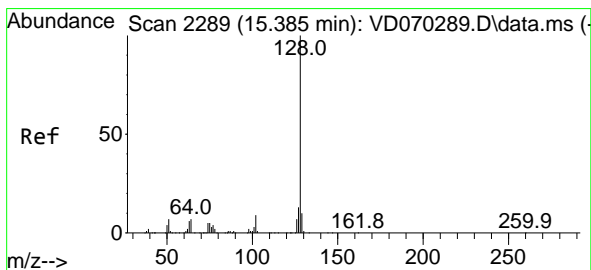
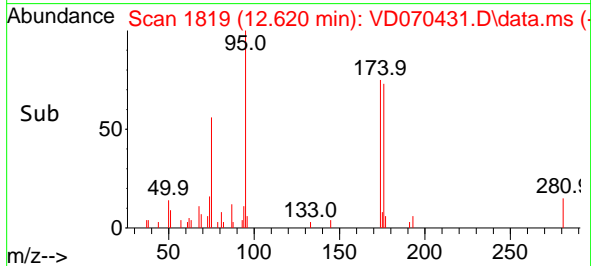
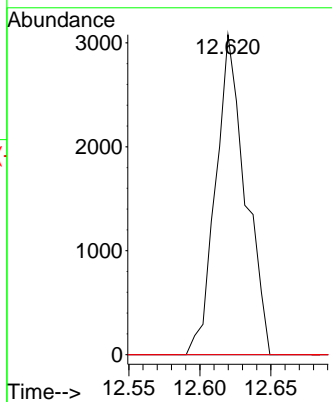
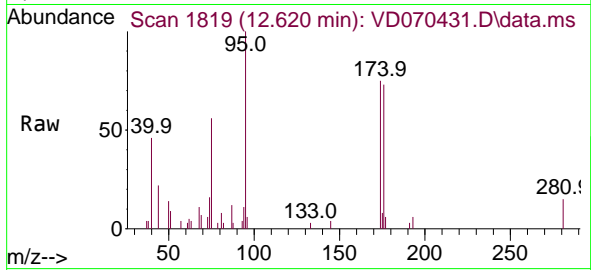




#81
 trans-1,4-Dichloro-2-butene
 Concen: 172.389 ug/l
 RT: 12.620 min Scan# 1819
 Delta R.T. 0.100 min
 Lab File: VD070431.D
 Acq: 22 Sep 2021 17:19

Instrument :
 MSVOA_D
 ClientSampled :
 SB-1-(8.0-9.0)RE

Tgt Ion	Resp	Lower	Upper
75	4470		
75	100		
53	0.0	64.2	96.2#
89	0.0	35.6	53.4#



#95
 Naphthalene
 Concen: 2.663 ug/l
 RT: 15.384 min Scan# 2289
 Delta R.T. -0.000 min
 Lab File: VD070431.D
 Acq: 22 Sep 2021 17:19

Tgt Ion	Resp	Lower	Upper
128	499		
128	100		
127	0.0	10.5	15.7#
129	0.0	9.0	13.4#

