

Data Path : Z:\voasrv\HPCHEM1\MSVOA\_D\Data\VD092223\  
 Data File : VD077195.D  
 Acq On : 22 Sep 2023 11:30  
 Operator : JC/SY  
 Sample : 04469-05  
 Misc : 4.87G/10.0ml/MSVOA\_D/SOIL  
 ALS Vial : 6 Sample Multiplier: 1

Instrument :  
 MSVOA\_D  
 ClientSampleId :

Quant Time: Sep 22 23:42:36 2023  
 Quant Method : Z:\voasrv\HPCHEM1\MSVOA\_D\Method\SFAMDLM090123SMA.M  
 Quant Title : SFAM01.0  
 QLast Update : Fri Sep 22 23:41:10 2023  
 Response via : Initial Calibration

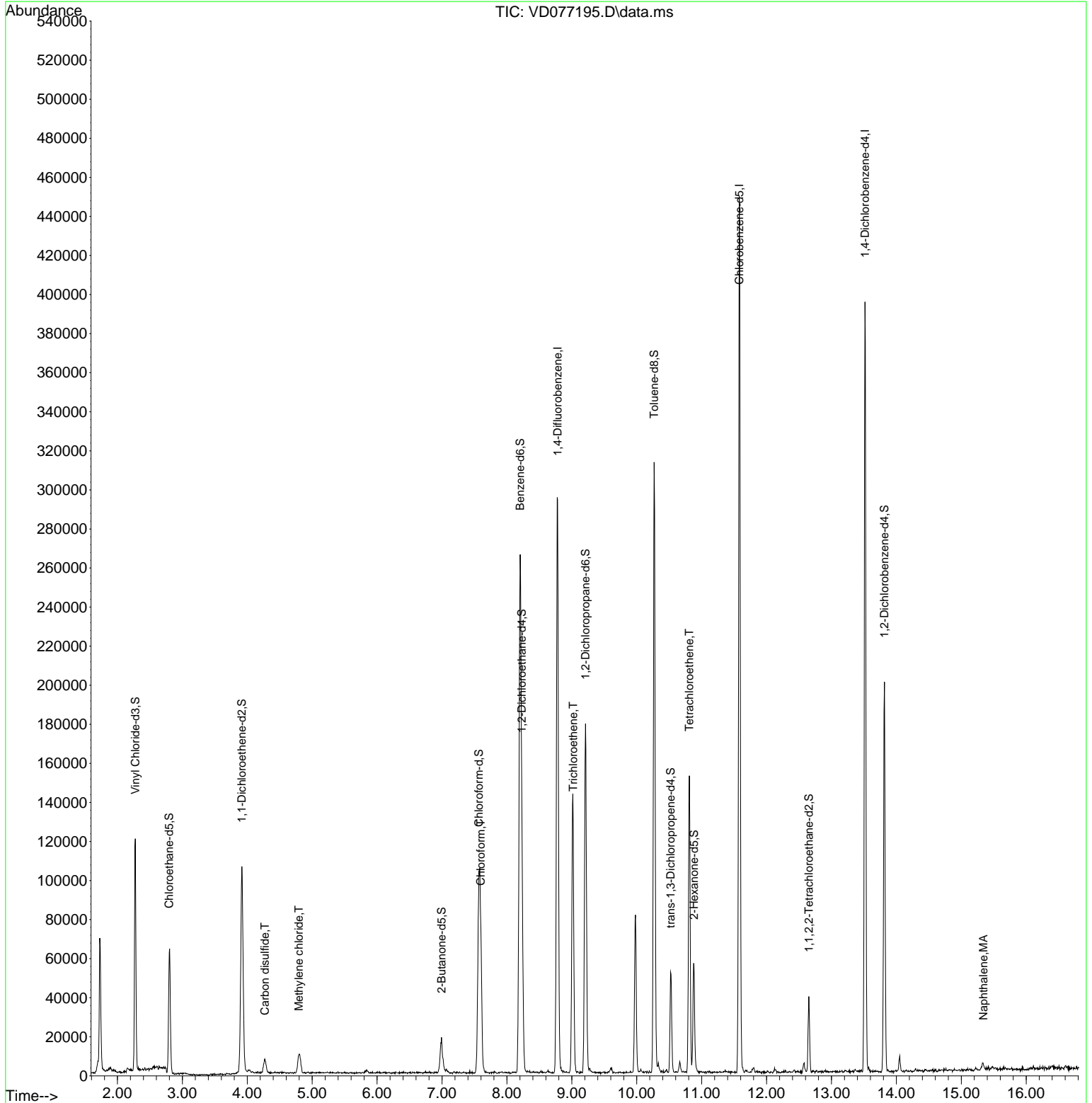
Compound	R.T.	QIon	Response	Conc	Units	Dev(Min)
-----						
Internal Standards						
1) 1,4-Difluorobenzene	8.781	114	279562	25.000	ug/L	0.00
28) Chlorobenzene-d5	11.581	117	271299	25.000	ug/L	0.00
58) 1,4-Dichlorobenzene-d4	13.516	152	111747	25.000	ug/L	0.00
System Monitoring Compounds						
4) Vinyl Chloride-d3	2.275	65	111506	16.187	ug/L	0.00
Spiked Amount	25.000	Range 30 - 150	Recovery =	64.760%		
7) Chloroethane-d5	2.799	69	66176	11.682	ug/L	0.00
Spiked Amount	25.000	Range 30 - 150	Recovery =	46.720%		
11) 1,1-Dichloroethene-d2	3.916	65	29002	18.534	ug/L	0.00
Spiked Amount	25.000	Range 45 - 110	Recovery =	74.120%		
21) 2-Butanone-d5	6.993	46	28708	33.081	ug/L	0.01
Spiked Amount	50.000	Range 20 - 135	Recovery =	66.160%		
24) Chloroform-d	7.569	84	93901	12.275	ug/L	0.00
Spiked Amount	25.000	Range 40 - 150	Recovery =	49.120%		
26) 1,2-Dichloroethane-d4	8.228	65	72940	20.118	ug/L	0.00
Spiked Amount	25.000	Range 70 - 130	Recovery =	80.480%		
32) Benzene-d6	8.204	84	287280	19.172	ug/L	0.00
Spiked Amount	25.000	Range 20 - 135	Recovery =	76.680%		
36) 1,2-Dichloropropane-d6	9.210	67	92298	21.479	ug/L	0.00
Spiked Amount	25.000	Range 70 - 120	Recovery =	85.920%		
41) Toluene-d8	10.269	98	226260	16.495	ug/L	0.00
Spiked Amount	25.000	Range 30 - 130	Recovery =	66.000%		
43) trans-1,3-Dichloroprop...	10.522	79	31686	16.183	ug/L	0.00
Spiked Amount	25.000	Range 30 - 135	Recovery =	64.720%		
47) 2-Hexanone-d5	10.881	63	18478	26.923	ug/L	0.00
Spiked Amount	50.000	Range 20 - 135	Recovery =	53.840%		
56) 1,1,2,2-Tetrachloroeth...	12.651	84	19390	5.062	ug/L	0.00
Spiked Amount	25.000	Range 45 - 120	Recovery =	20.240%#		
66) 1,2-Dichlorobenzene-d4	13.816	152	54895	15.305	ug/L	0.00
Spiked Amount	25.000	Range 75 - 120	Recovery =	61.200%#		
-----						
Target Compounds						Qvalue
14) Carbon disulfide	4.269	76	14587	1.200	ug/L	97
16) Methylene chloride	4.793	84	4381	0.770	ug/L	91
25) Chloroform	7.599	83	60298	7.836	ug/L	96
34) Trichloroethene	9.022	95	1920	0.444	ug/L #	78
46) Tetrachloroethene	10.810	164	36256	10.263	ug/L	96
71) Naphthalene	15.339	128	4651	0.601	ug/L #	74
-----						

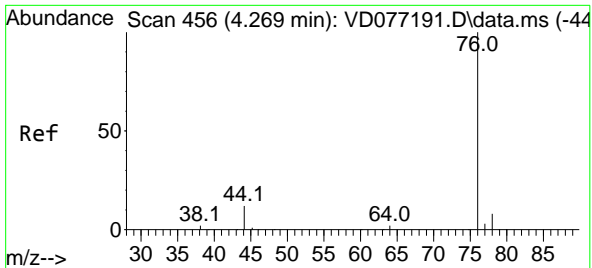
(#) = qualifier out of range (m) = manual integration (+) = signals summed

Data Path : Z:\voasrv\HPCHEM1\MSVOA\_D\Data\VD092223\  
 Data File : VD077195.D  
 Acq On : 22 Sep 2023 11:30  
 Operator : JC/SY  
 Sample : 04469-05  
 Misc : 4.87G/10.0ml/MSVOA\_D/SOIL  
 ALS Vial : 6 Sample Multiplier: 1

Instrument :  
 MSVOA\_D  
 ClientSampleId :

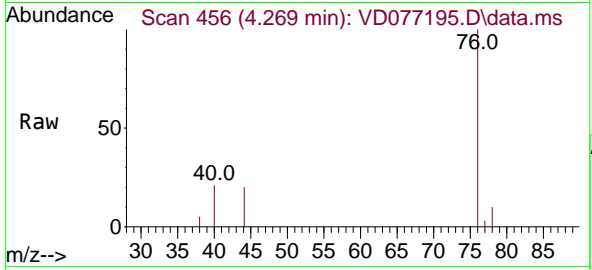
Quant Time: Sep 22 23:42:36 2023  
 Quant Method : Z:\voasrv\HPCHEM1\MSVOA\_D\Method\SFAMDLM090123SMA.M  
 Quant Title : SFAM01.0  
 QLast Update : Fri Sep 22 23:41:10 2023  
 Response via : Initial Calibration



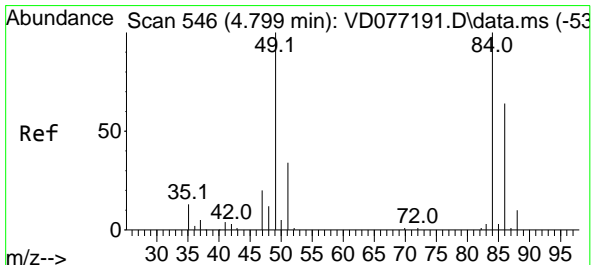
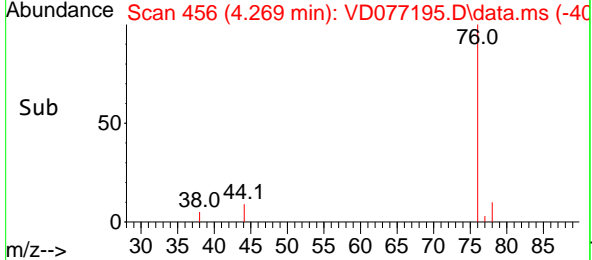
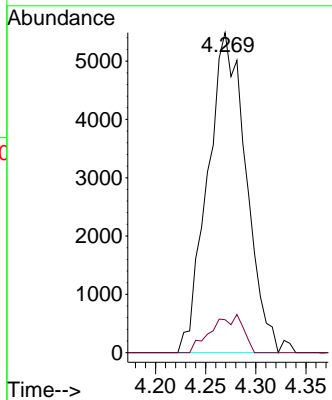


#14  
 Carbon disulfide  
 Concen: 1.200 ug/L  
 RT: 4.269 min Scan# 41  
 Delta R.T. 0.000 min  
 Lab File: VD077195.D  
 Acq: 22 Sep 2023 11:30

Instrument : MSVOA\_D  
 ClientSampleId :

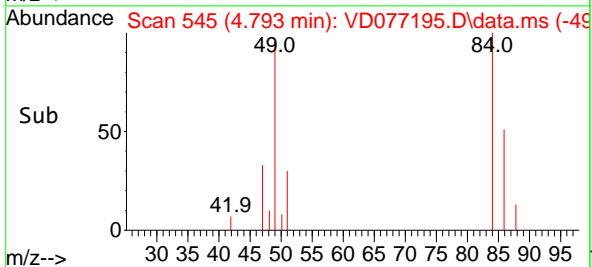
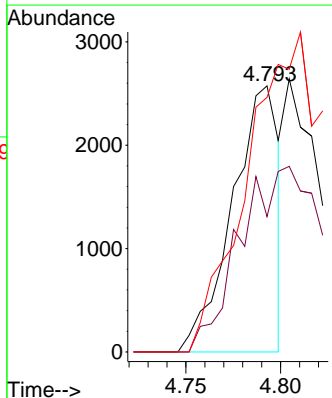
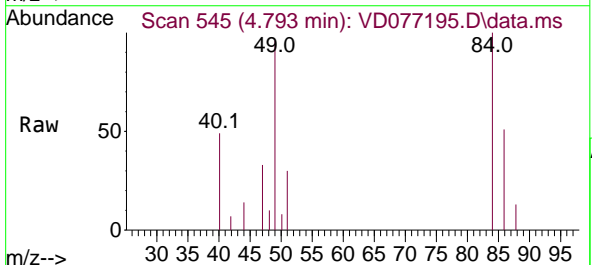


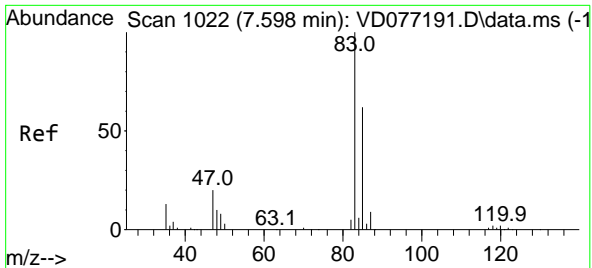
Tgt Ion: 76 Resp: 14587  
 Ion Ratio Lower Upper  
 76 100  
 78 10.3 7.5 11.3



#16  
 Methylene chloride  
 Concen: 0.770 ug/L  
 RT: 4.793 min Scan# 545  
 Delta R.T. -0.006 min  
 Lab File: VD077195.D  
 Acq: 22 Sep 2023 11:30

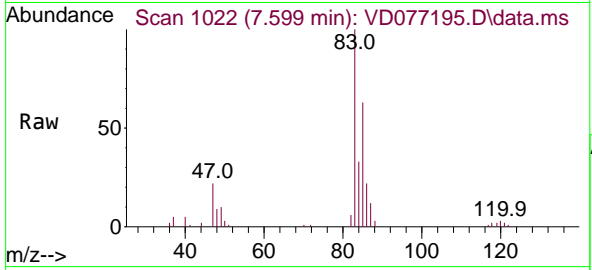
Tgt Ion: 84 Resp: 4381  
 Ion Ratio Lower Upper  
 84 100  
 86 50.8 45.3 84.1  
 49 95.7 69.2 128.6



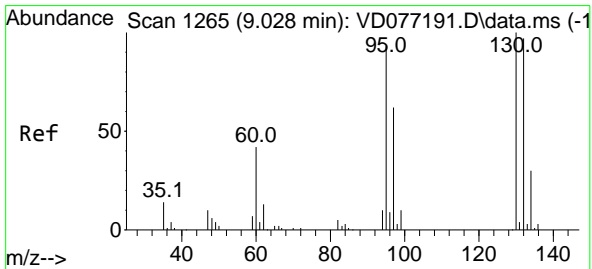
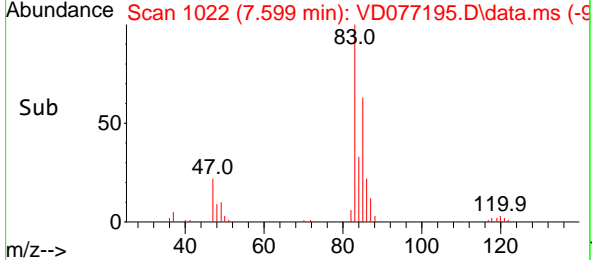
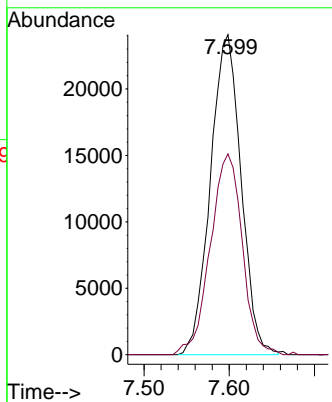


#25  
 Chloroform  
 Concen: 7.836 ug/L  
 RT: 7.599 min Scan# 1022  
 Delta R.T. 0.000 min  
 Lab File: VD077195.D  
 Acq: 22 Sep 2023 11:30

Instrument : MSVOA\_D  
 ClientSampleId :

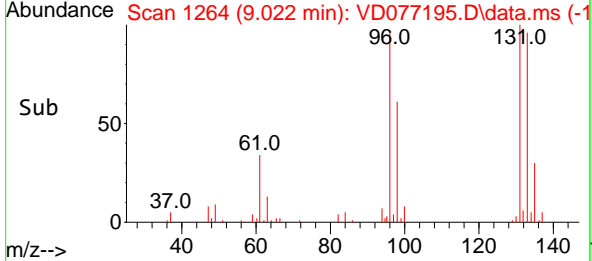
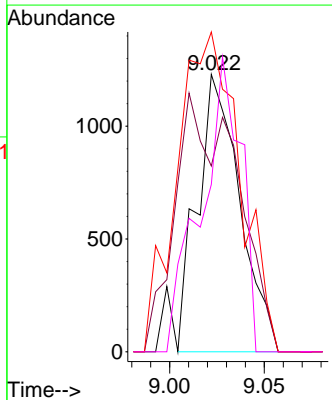
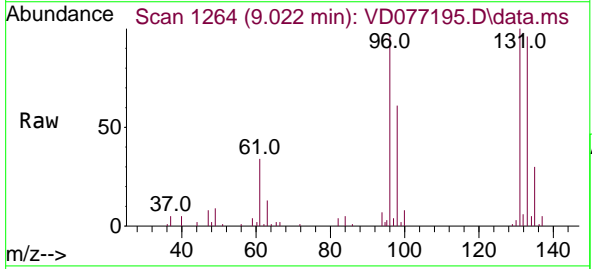


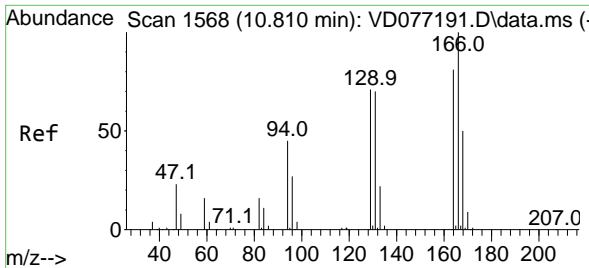
Tgt Ion: 83 Resp: 60298  
 Ion Ratio Lower Upper  
 83 100  
 85 62.7 46.2 85.8



#34  
 Trichloroethene  
 Concen: 0.444 ug/L  
 RT: 9.022 min Scan# 1264  
 Delta R.T. -0.006 min  
 Lab File: VD077195.D  
 Acq: 22 Sep 2023 11:30

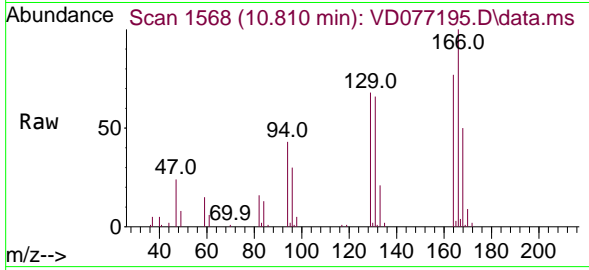
Tgt Ion: 95 Resp: 1920  
 Ion Ratio Lower Upper  
 95 100  
 97 67.0 46.4 86.2  
 132 115.3 70.1 130.1  
 130 60.3 72.4 134.5#



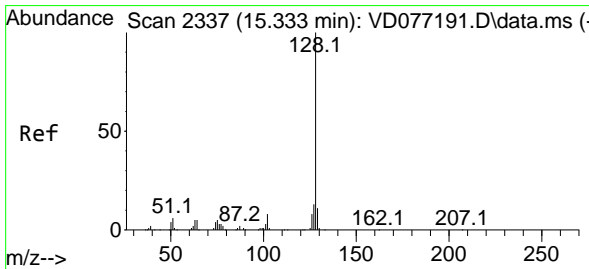
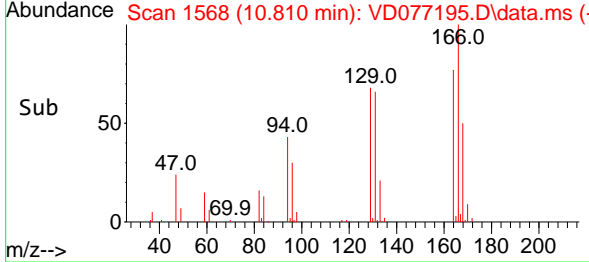
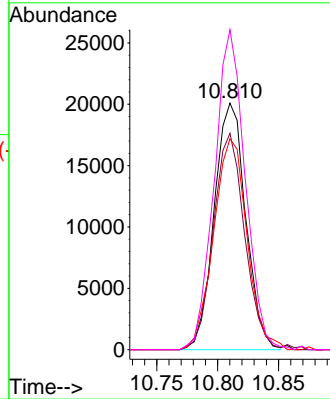


#46  
 Tetrachloroethene  
 Concen: 10.263 ug/L  
 RT: 10.810 min Scan# 11  
 Delta R.T. 0.000 min  
 Lab File: VD077195.D  
 Acq: 22 Sep 2023 11:30

Instrument :  
 MSVOA\_D  
 ClientSampleId :



Tgt Ion:164 Resp: 36256  
 Ion Ratio Lower Upper  
 164 100  
 129 87.7 66.4 123.4  
 131 85.5 62.6 116.3  
 166 129.8 89.6 166.4



#71  
 Naphthalene  
 Concen: 0.601 ug/L  
 RT: 15.339 min Scan# 2338  
 Delta R.T. 0.006 min  
 Lab File: VD077195.D  
 Acq: 22 Sep 2023 11:30

Tgt Ion:128 Resp: 4651  
 Ion Ratio Lower Upper  
 128 100  
 127 0.0 10.6 16.0#  
 129 4.2 8.6 13.0#

