

Data Path : Z:\VOASRV\HPCHEM1\MSVOA D\DATA\VD092520\
 Data File : VD066894.D
 Acq On : 26 Sep 2020 02:11
 Operator : VA/SY
 Sample : L4154-04
 Misc : 5.01G/5.00ml/MSVOA D/SOIL
 ALS Vial : 36 Sample Multiplier: 1

Instrument :
 MSVOA_D
 ClientSampleID :
 DUP-1

Quant Time: Sep 26 07:13:56 2020
 Quant Method : Z:\VOASRV\HPCHEM1\MSVOA_D\METHOD\82D092220S.M
 Quant Title : SW846 8260
 QLast Update : Wed Sep 23 01:34:05 2020
 Response via : Initial Calibration

Internal Standards	R.T.	QIon	Response	Conc	Units	Dev(Min)
1) Pentafluorobenzene	7.98	168	490265	50.00	ug/l	0.00
34) 1,4-Difluorobenzene	8.86	114	840762	50.00	ug/l	0.00
63) Chlorobenzene-d5	11.64	117	870676	50.00	ug/l	0.00
72) 1,4-Dichlorobenzene-d4	13.58	152	415979	50.00	ug/l	0.00

System Monitoring Compounds

33) 1,2-Dichloroethane-d4	8.33	65	234351	48.84	ug/l	0.00
Spiked Amount				50.000		
			Recovery	=	97.68%	
35) Dibromofluoromethane	7.91	113	255986	47.86	ug/l	0.00
Spiked Amount				50.000		
			Recovery	=	95.72%	
50) Toluene-d8	10.34	98	1026154	56.31	ug/l	0.00
Spiked Amount				50.000		
			Recovery	=	112.62%	
62) 4-Bromofluorobenzene	12.63	95	404300	64.80	ug/l	0.00
Spiked Amount				50.000		
			Recovery	=	129.60%	

Target Compounds

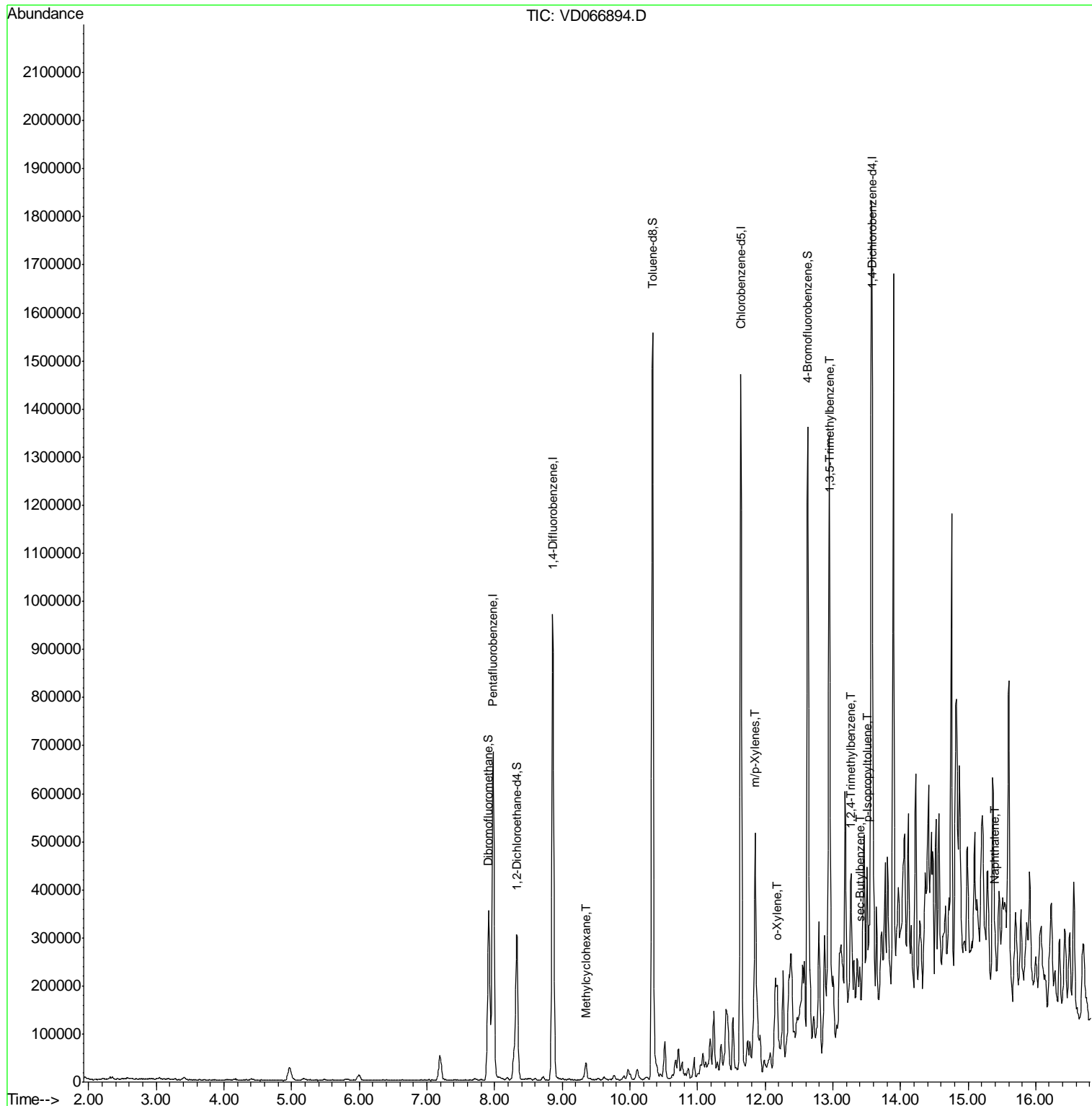
						Qvalue
39) Methylcyclohexane	9.36	83	13251	1.384	ug/l	89
68) m/p-Xylenes	11.85	106	50812	4.216	ug/l	97
69) o-Xylene	12.18	106	33671	3.090	ug/l	99
80) 1,3,5-Trimethylbenzene	12.96	105	98473	3.862	ug/l	99
84) 1,2,4-Trimethylbenzene	13.27	105	168743	6.674	ug/l	100
85) sec-Butylbenzene	13.40	105	33188	1.102	ug/l	87
86) p-Isopropyltoluene	13.51	119	37689	1.388	ug/l	96
95) Naphthalene	15.40	128	63176	4.976	ug/l #	91

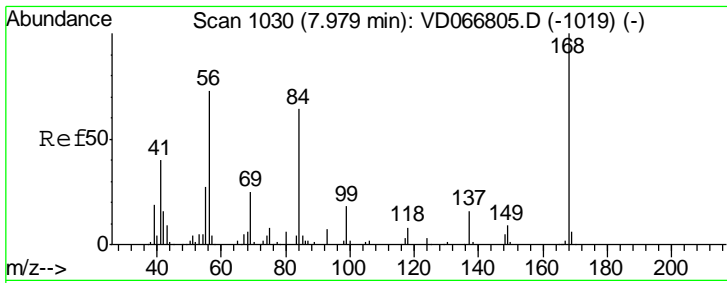
(#) = qualifier out of range (m) = manual integration (+) = signals summed

Data Path : Z:\VOASRV\HPCHEM1\MSVOA D\DATA\VD092520\
 Data File : VD066894.D
 Acq On : 26 Sep 2020 02:11
 Operator : VA/SY
 Sample : L4154-04
 Misc : 5.01G/5.00ml/MSVOA D/SOIL
 ALS Vial : 36 Sample Multiplier: 1

Instrument :
 MSVOA_D
 Client Sampled :
 DUP-1

Quant Time: Sep 26 07:13:56 2020
 Quant Method : Z:\VOASRV\HPCHEM1\MSVOA_D\METHOD\82D092220S.M
 Quant Title : SW846 8260
 QLast Update : Wed Sep 23 01:34:05 2020
 Response via : Initial Calibration

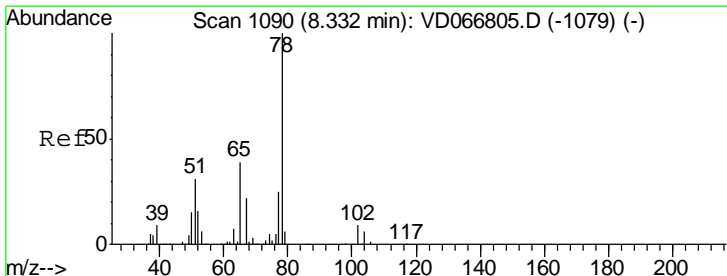
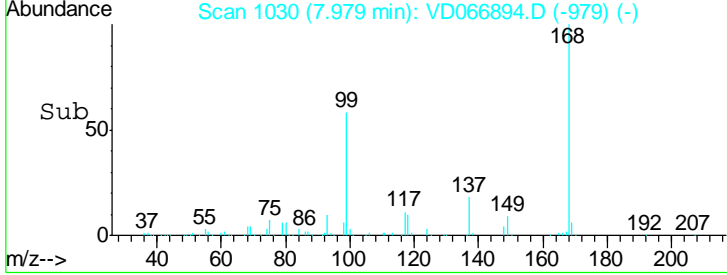
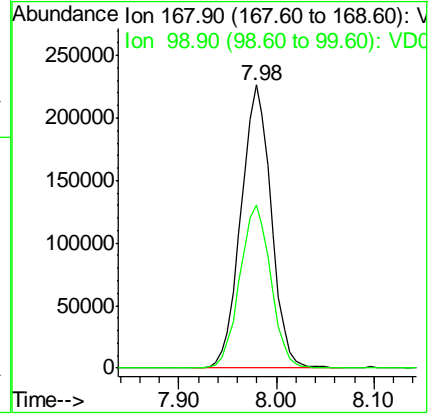
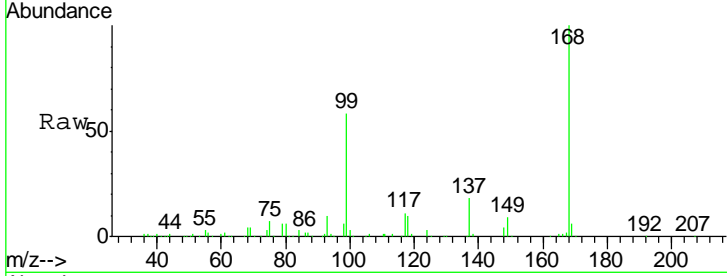




#1
 Pentafluorobenzene
 Concen: 50.000 ug/l
 RT: 7.98 min Scan# 1030
 Delta R.T. -0.00 min
 Lab File: VD066894.D
 Acq: 26 Sep 2020 02:11

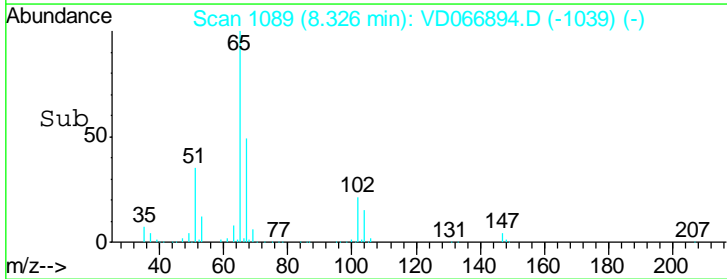
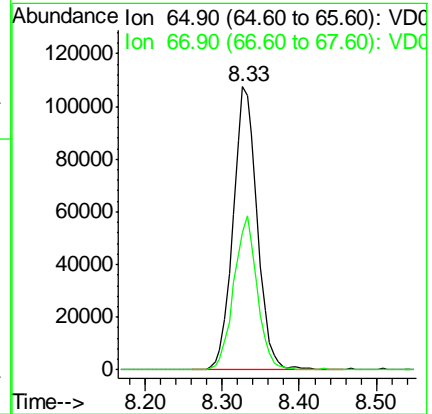
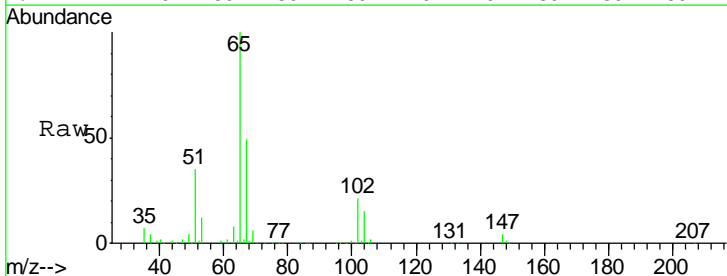
Instrument :
 MSVOA_D
 ClientSampled :
 DUP-1

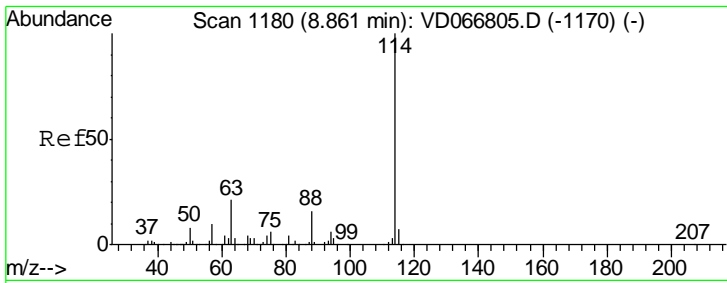
Tgt Ion: 168 Resp: 490265
 Ion Ratio Lower Upper
 168 100
 99 57.7 46.6 69.8



#33
 1,2-Dichloroethane-d4
 Concen: 48.838 ug/l
 RT: 8.33 min Scan# 1089
 Delta R.T. -0.01 min
 Lab File: VD066894.D
 Acq: 26 Sep 2020 02:11

Tgt Ion: 65 Resp: 234351
 Ion Ratio Lower Upper
 65 100
 67 52.8 0.0 107.2

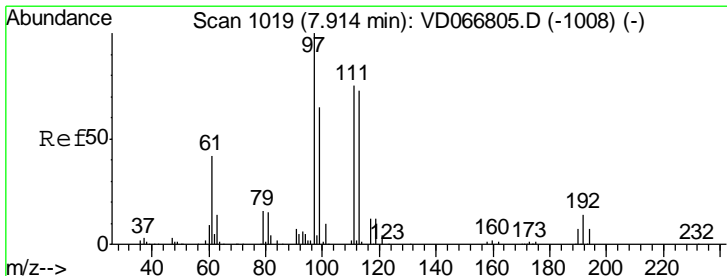
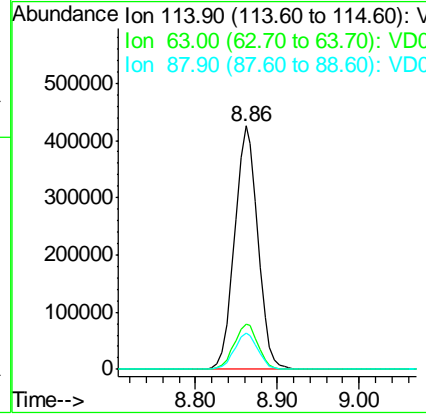
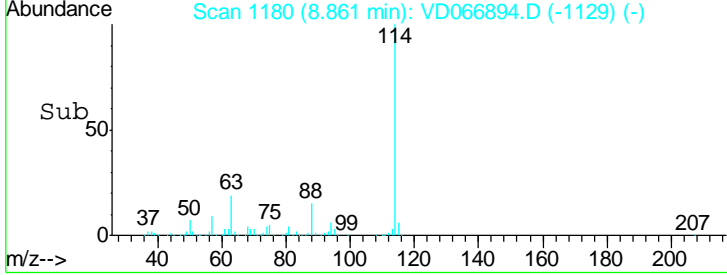
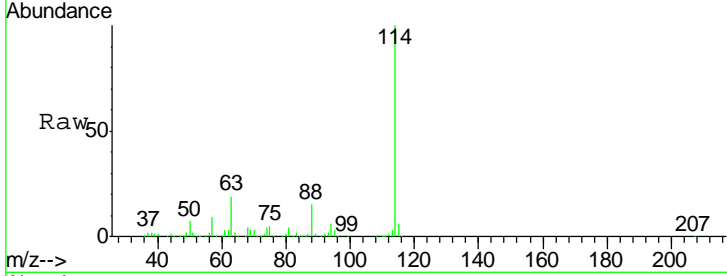




#34
 1,4-Difluorobenzene
 Concen: 50.000 ug/l
 RT: 8.86 min Scan# 1180
 Delta R.T. -0.00 min
 Lab File: VD066894.D
 Acq: 26 Sep 2020 02:11

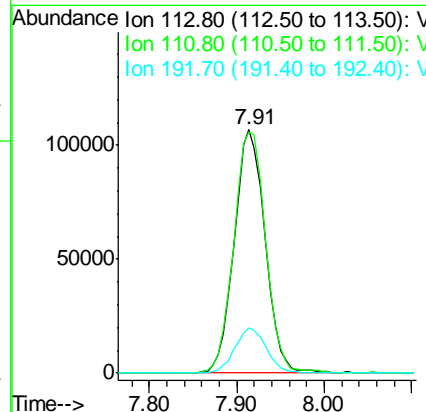
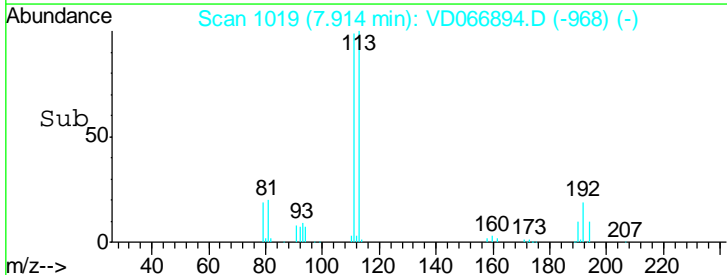
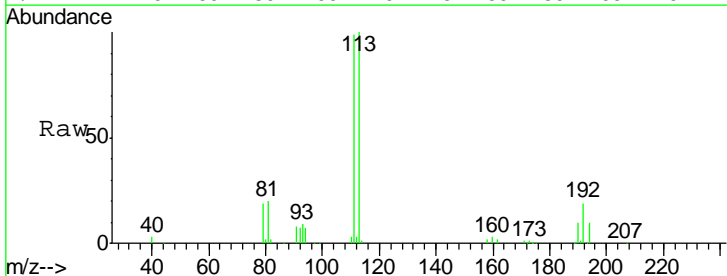
Instrument :
 MSVOA_D
 ClientSampled :
 DUP-1

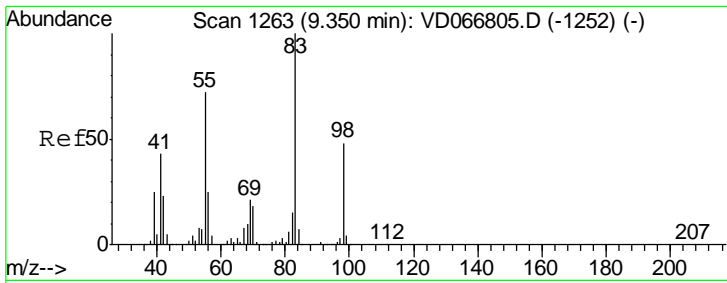
Tgt Ion	Resp	Lower	Upper
114	100		
63	18.7	0.0	42.6
88	14.7	0.0	32.6



#35
 Dibromofluoromethane
 Concen: 47.857 ug/l
 RT: 7.91 min Scan# 1019
 Delta R.T. -0.00 min
 Lab File: VD066894.D
 Acq: 26 Sep 2020 02:11

Tgt Ion	Resp	Lower	Upper
113	100		
111	102.1	81.8	122.8
192	18.6	14.4	21.6

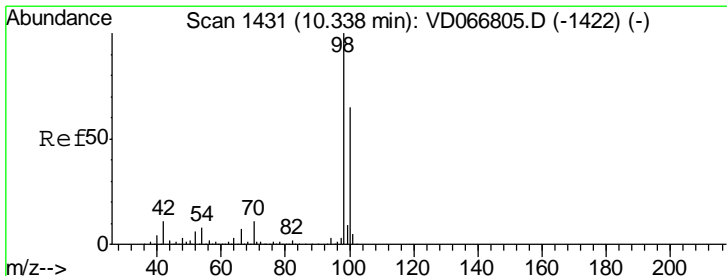
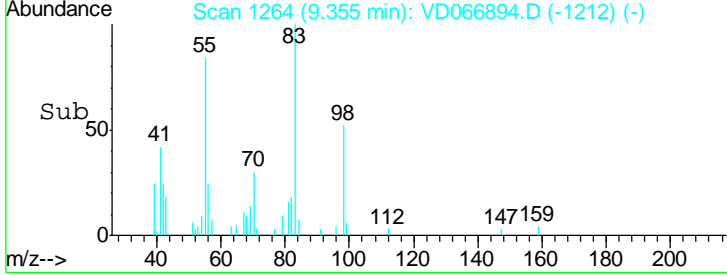
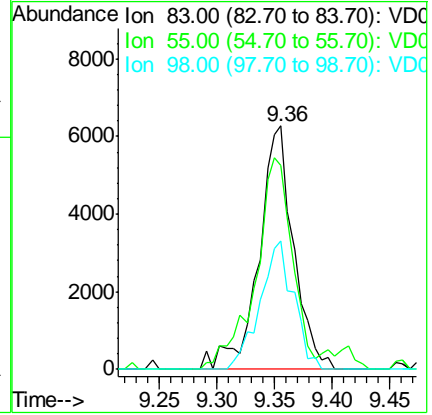
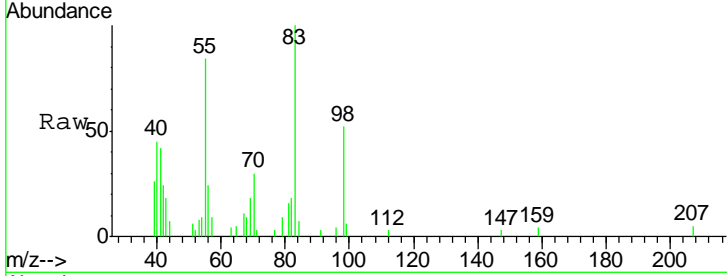




#39
 Methylcyclohexane
 Concen: 1.384 ug/l
 RT: 9.36 min Scan# 1264
 Delta R.T. 0.01 min
 Lab File: VD066894.D
 Acq: 26 Sep 2020 02:11

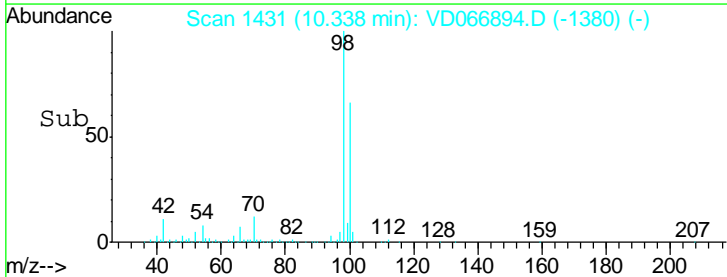
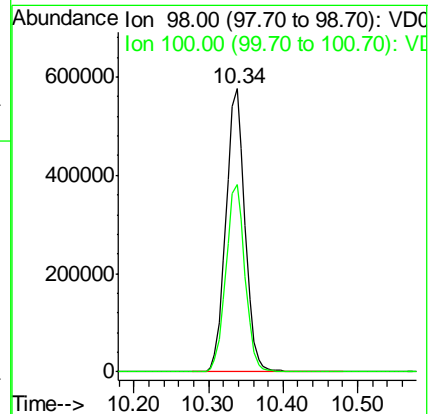
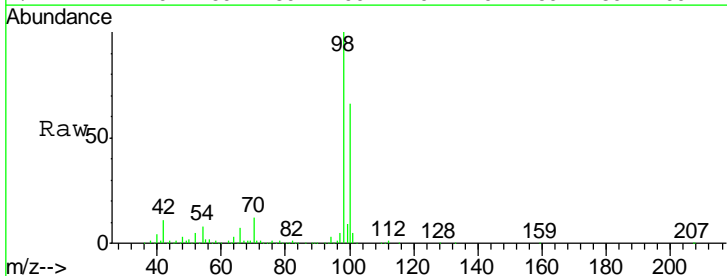
Instrument :
 MSVOA_D
 ClientSampled :
 DUP-1

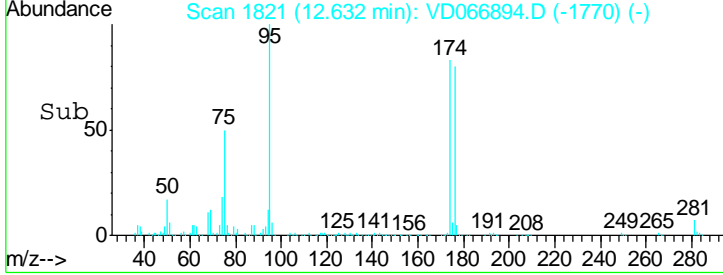
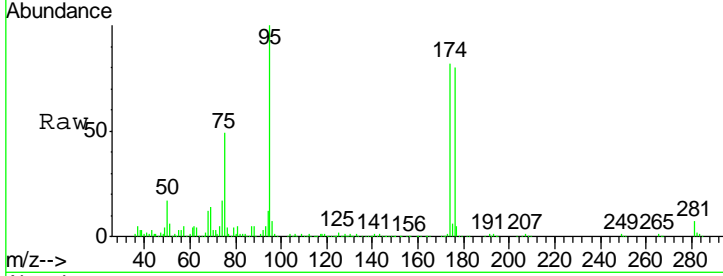
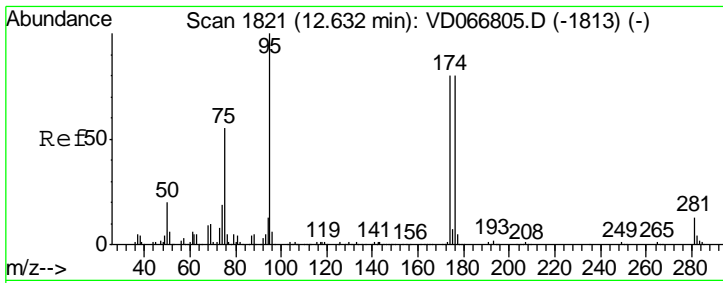
Tgt Ion	Resp	Lower	Upper
83	13251		
55	83.7	57.7	86.5
98	52.5	38.4	57.6



#50
 Toluene-d8
 Concen: 56.306 ug/l
 RT: 10.34 min Scan# 1431
 Delta R.T. -0.00 min
 Lab File: VD066894.D
 Acq: 26 Sep 2020 02:11

Tgt Ion	Resp	Lower	Upper
98	1026154		
100	66.2	52.2	78.2

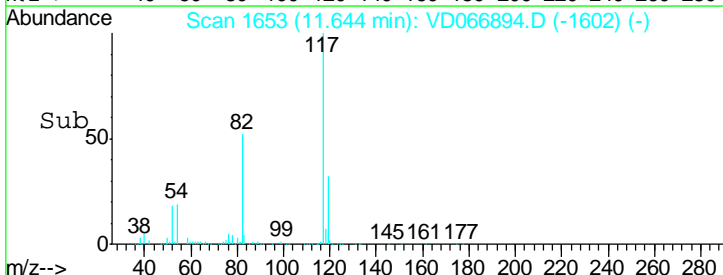
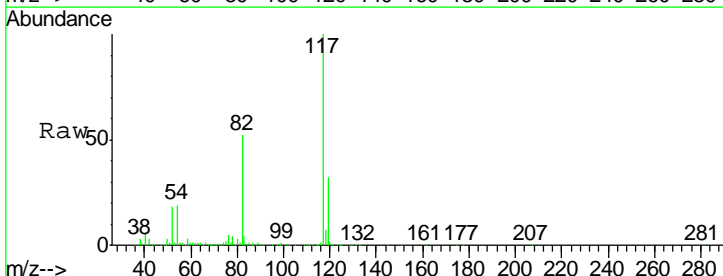
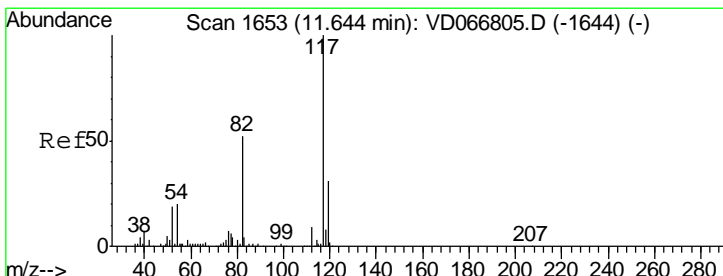
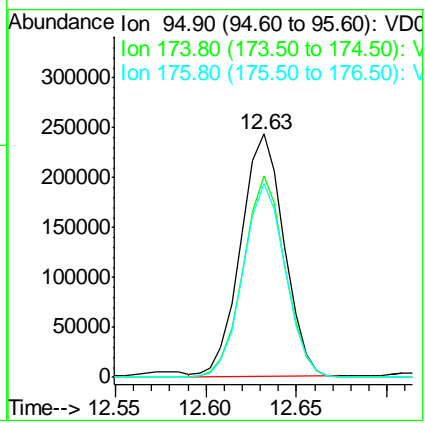




#62
 4-Bromofluorobenzene
 Concen: 64.802 ug/l
 RT: 12.63 min Scan# 1821
 Delta R.T. -0.00 min
 Lab File: VD066894.D
 Acq: 26 Sep 2020 02:11

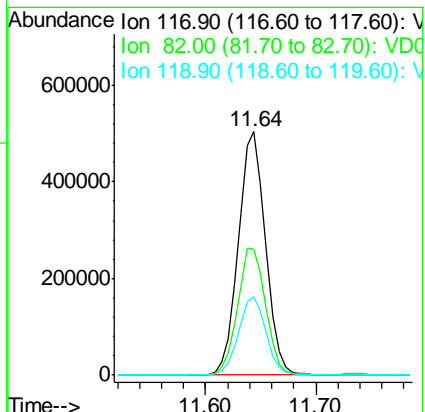
Instrument : MSVOA_D
 ClientSampled : DUP-1

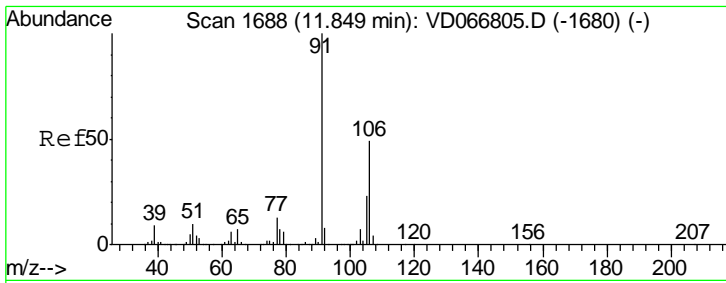
Tgt Ion	Resp	Lower	Upper
95	404300		
174	80.4	0.0	159.8
176	78.1	0.0	154.4



#63
 Chlorobenzene-d5
 Concen: 50.000 ug/l
 RT: 11.64 min Scan# 1653
 Delta R.T. -0.00 min
 Lab File: VD066894.D
 Acq: 26 Sep 2020 02:11

Tgt Ion	Resp	Lower	Upper
117	870676		
82	51.7	41.8	62.6
119	32.0	24.6	37.0

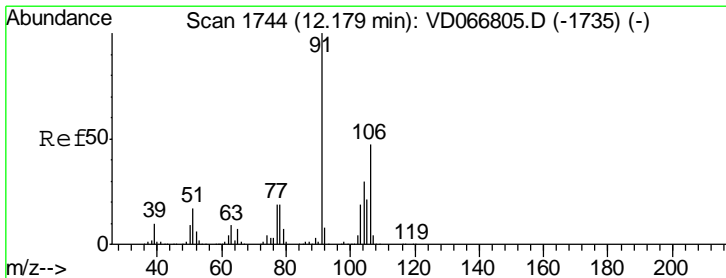
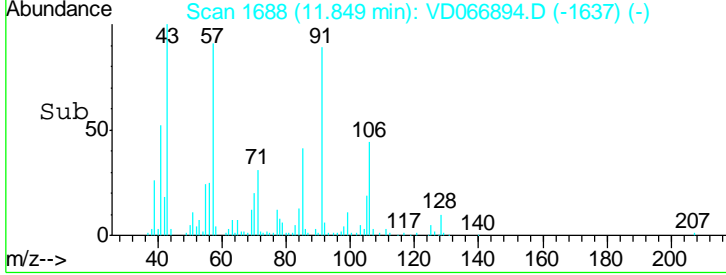
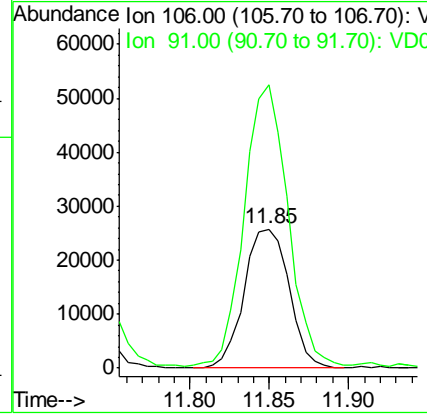
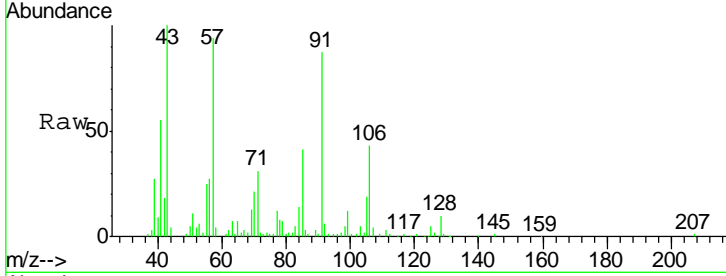




#68
 m/p-Xylenes
 Concen: 4.216 ug/l
 RT: 11.85 min Scan# 1688
 Delta R.T. -0.00 min
 Lab File: VD066894.D
 Acq: 26 Sep 2020 02:11

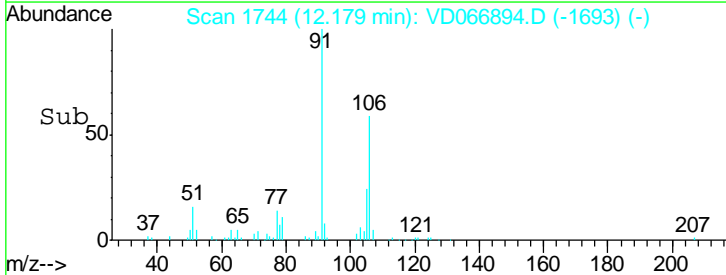
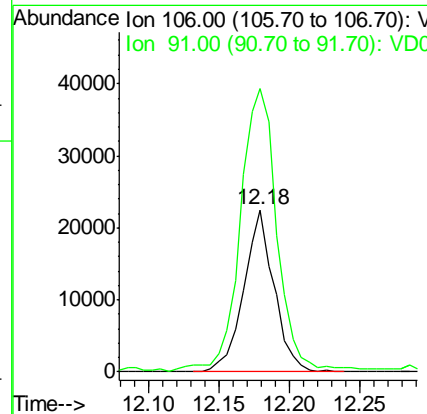
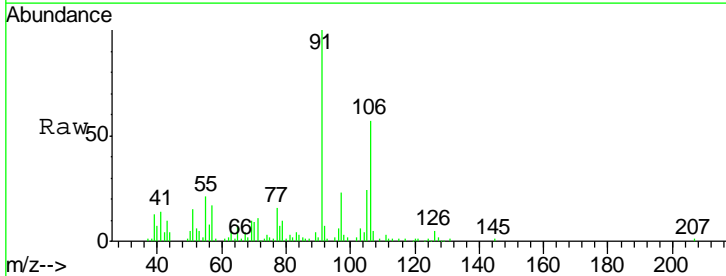
Instrument :
 MSVOA_D
 ClientSampled :
 DUP-1

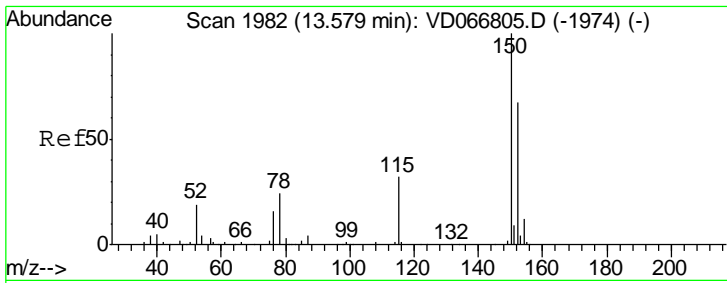
Tgt Ion:106 Resp: 50812
 Ion Ratio Lower Upper
 106 100
 91 196.0 160.7 241.1



#69
 o-Xylene
 Concen: 3.090 ug/l
 RT: 12.18 min Scan# 1744
 Delta R.T. -0.00 min
 Lab File: VD066894.D
 Acq: 26 Sep 2020 02:11

Tgt Ion:106 Resp: 33671
 Ion Ratio Lower Upper
 106 100
 91 214.8 106.3 318.8

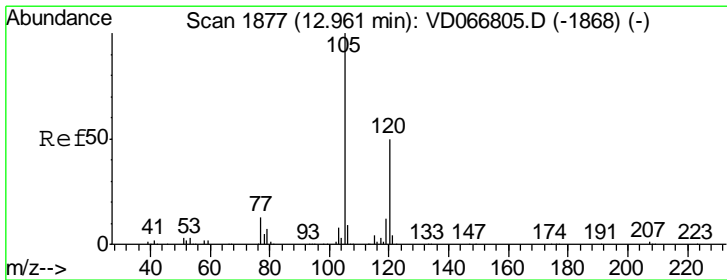
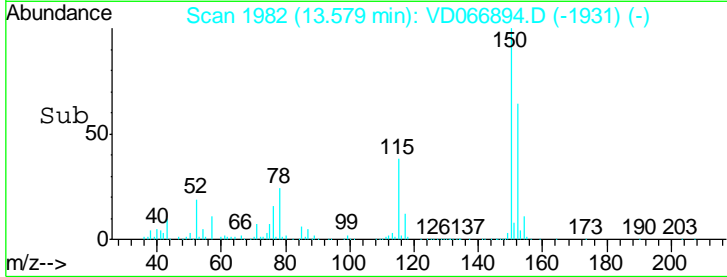
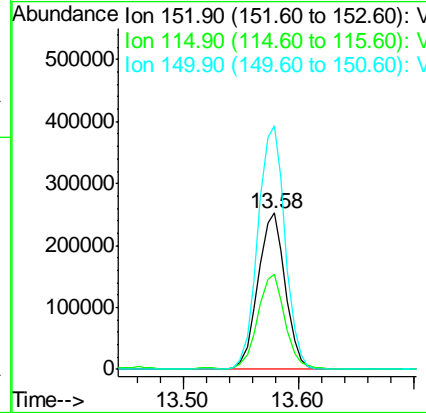
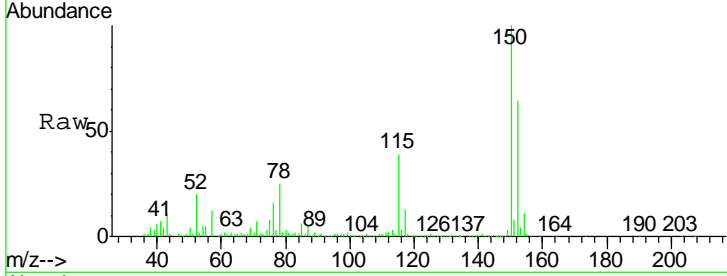




#72
 1,4-Dichlorobenzene-d4
 Concen: 50.000 ug/l
 RT: 13.58 min Scan# 1982
 Delta R.T. -0.00 min
 Lab File: VD066894.D
 Acq: 26 Sep 2020 02:11

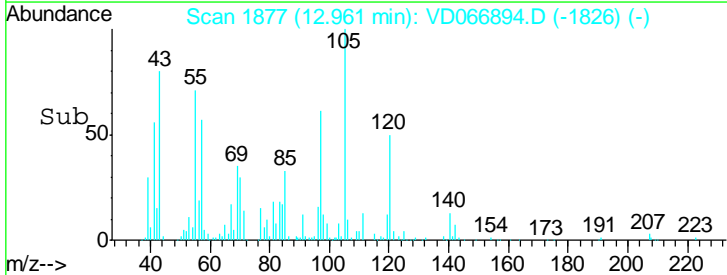
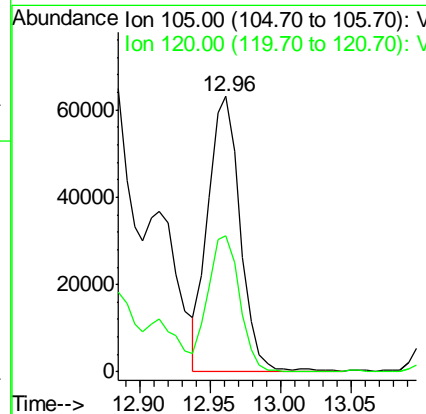
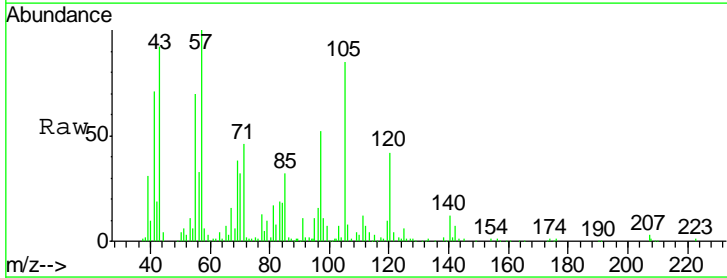
Instrument :
 MSVOA_D
 ClientSampled :
 DUP-1

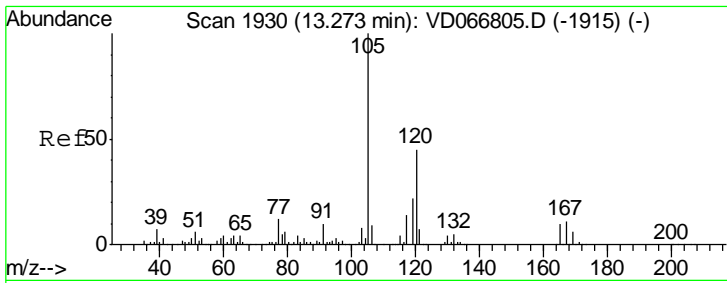
Tgt Ion	Resp	Lower	Upper
152	100		
115	60.8	30.3	91.0
150	155.1	0.0	346.2



#80
 1,3,5-Trimethylbenzene
 Concen: 3.862 ug/l
 RT: 12.96 min Scan# 1877
 Delta R.T. -0.00 min
 Lab File: VD066894.D
 Acq: 26 Sep 2020 02:11

Tgt Ion	Resp	Lower	Upper
105	100		
120	49.4	24.4	73.4

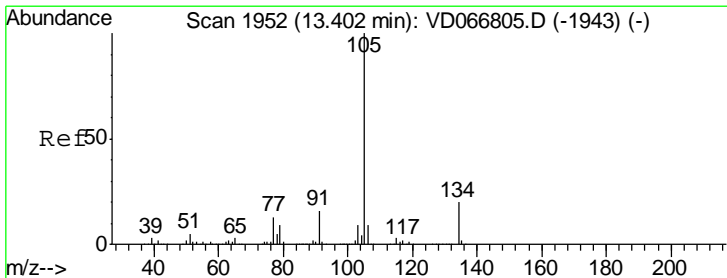
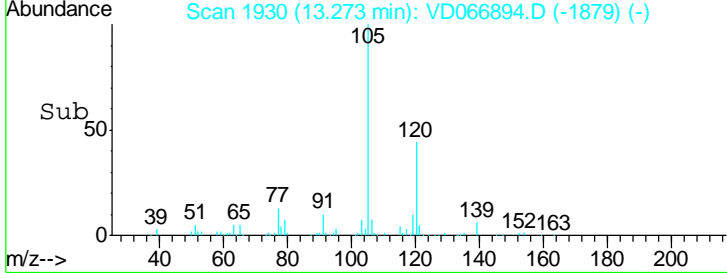
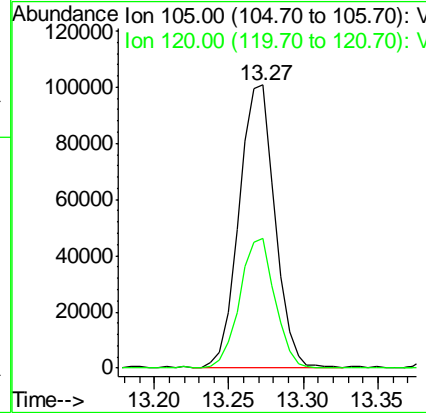
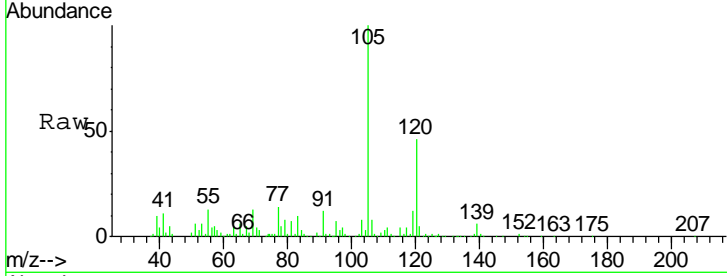




#84
 1,2,4-Trimethylbenzene
 Concen: 6.674 ug/l
 RT: 13.27 min Scan# 1930
 Delta R.T. -0.00 min
 Lab File: VD066894.D
 Acq: 26 Sep 2020 02:11

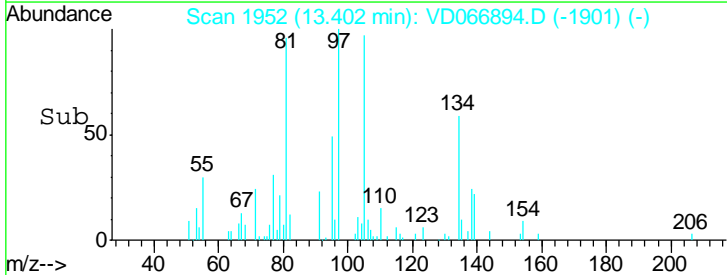
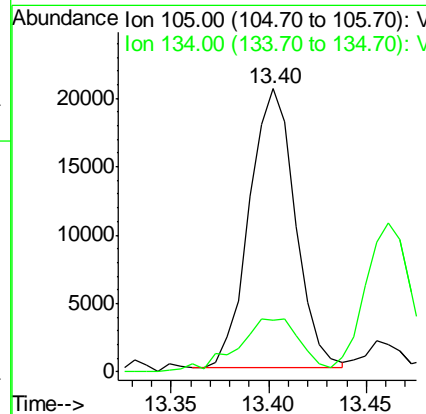
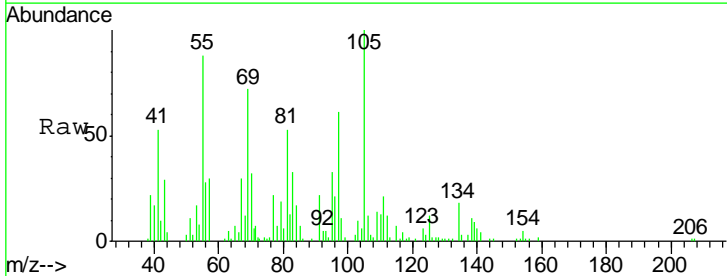
Instrument :
 MSVOA_D
 ClientSampled :
 DUP-1

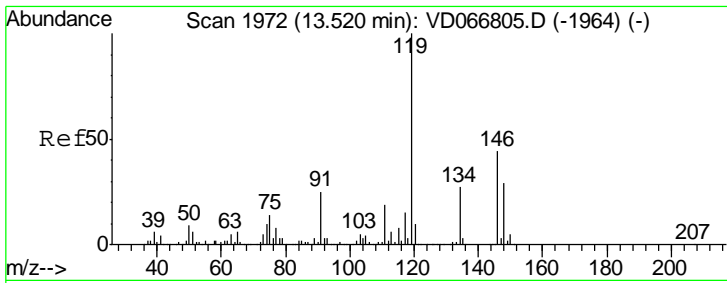
Tgt Ion:105 Resp: 168743
 Ion Ratio Lower Upper
 105 100
 120 44.7 22.3 66.9



#85
 sec-Butylbenzene
 Concen: 1.102 ug/l
 RT: 13.40 min Scan# 1952
 Delta R.T. -0.00 min
 Lab File: VD066894.D
 Acq: 26 Sep 2020 02:11

Tgt Ion:105 Resp: 33188
 Ion Ratio Lower Upper
 105 100
 134 26.6 10.2 30.6

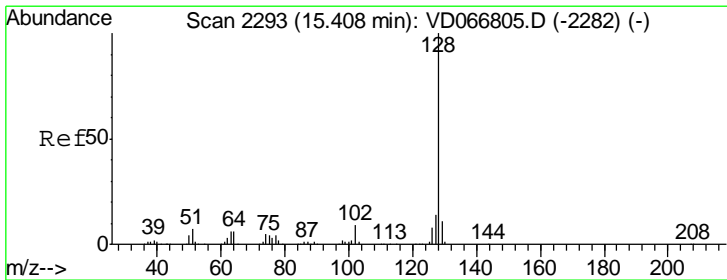
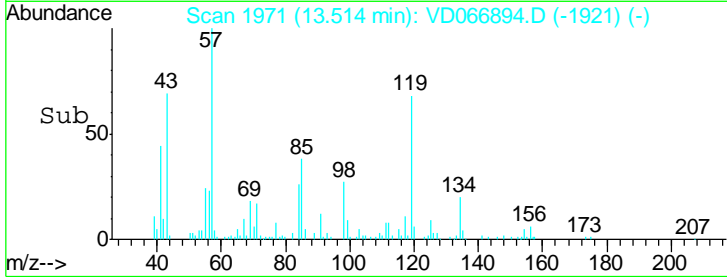
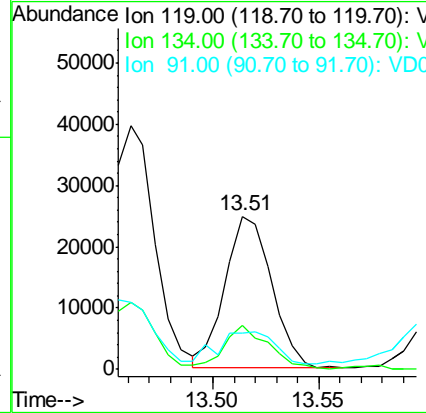
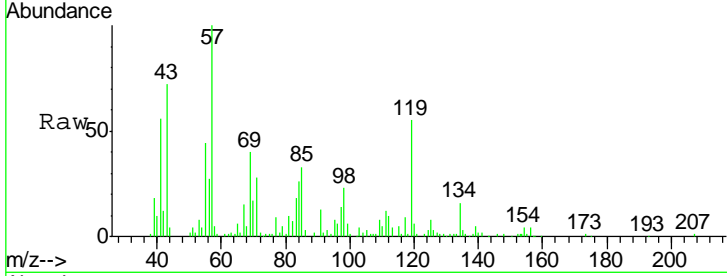




#86
 p-Isopropyltoluene
 Concen: 1.388 ug/l
 RT: 13.51 min Scan# 1971
 Delta R.T. -0.01 min
 Lab File: VD066894.D
 Acq: 26 Sep 2020 02:11

Instrument :
 MSVOA_D
 ClientSampled :
 DUP-1

Tgt Ion	Resp	Lower	Upper
119	100		
134	27.9	13.0	38.9
91	26.0	12.0	36.1



#95
 Naphthalene
 Concen: 4.976 ug/l
 RT: 15.40 min Scan# 2292
 Delta R.T. -0.01 min
 Lab File: VD066894.D
 Acq: 26 Sep 2020 02:11

Tgt Ion	Resp	Lower	Upper
128	100		
127	15.7	10.6	16.0
129	6.0	8.9	13.3#

