

Data Path : Z:\VOASRV\HPCHEM1\MSVOA D\DATA\VD092520\
 Data File : VD066888.D
 Acq On : 25 Sep 2020 23:27
 Operator : VA/SY
 Sample : VD0925SBL02
 Misc : 5.00G/5.00ml/MSVOA D/SOIL
 ALS Vial : 30 Sample Multiplier: 1

Instrument :
 MSVOA_D
 ClientSampleID :
 VD0925SBL02

Integration Parameters: RTEINT.P

Integrator: RTE
 Smoothing : ON Filtering: 5
 Sampling : 1 Min Area: 3 % of largest Peak
 Start Thrs: 0.2 Max Peaks: 100
 Stop Thrs : 0 Peak Location: TOP

If leading or trailing edge < 100 prefer < Baseline drop else tangent >
 Peak separation: 5

Method : Z:\VOASRV\HPCHEM1\MSVOA_D\METHOD\82D092220S.M
 Title : SW846 8260

Signal : TIC

peak #	R.T. min	first scan	max scan	last scan	PK TY	peak height	corr. area	corr. % max.	% of total
1	4.967	506	518	528	rBV2	32619	109551	6.68%	1.051%
2	5.997	682	693	702	rBV5	9178	28374	1.73%	0.272%
3	7.197	886	897	907	rBV	69435	194036	11.83%	1.861%
4	7.914	1010	1019	1024	rBV	257731	616993	37.63%	5.918%
5	7.979	1024	1030	1041	rVB	449418	1003253	61.18%	9.624%
6	8.326	1073	1089	1099	rBV2	237173	828215	50.51%	7.945%
7	8.861	1170	1180	1189	rBV	672225	1374785	83.84%	13.188%
8	10.338	1423	1431	1441	rBV	890687	1608031	98.06%	15.425%
9	10.720	1489	1496	1504	rVB	91577	166509	10.15%	1.597%
10	10.867	1514	1521	1526	rBV5	10611	20794	1.27%	0.199%
11	11.085	1552	1558	1564	rBV2	71989	116320	7.09%	1.116%
12	11.461	1617	1622	1627	rVB2	21054	31874	1.94%	0.306%
13	11.644	1645	1653	1664	rBV	984084	1639793	100.00%	15.730%
14	11.744	1664	1670	1676	rVB3	11349	17916	1.09%	0.172%
15	11.855	1682	1689	1696	rVB3	11632	24623	1.50%	0.236%
16	12.479	1789	1795	1802	rBV4	9184	16457	1.00%	0.158%
17	12.632	1814	1821	1830	rBV	672225	1084198	66.12%	10.400%
18	12.961	1871	1877	1881	rBV3	24020	39964	2.44%	0.383%
19	13.514	1966	1971	1975	rBV4	11080	19122	1.17%	0.183%
20	13.579	1975	1982	1990	rVB	884092	1441910	87.93%	13.831%
21	14.096	2065	2070	2078	rBV2	22842	42127	2.57%	0.404%

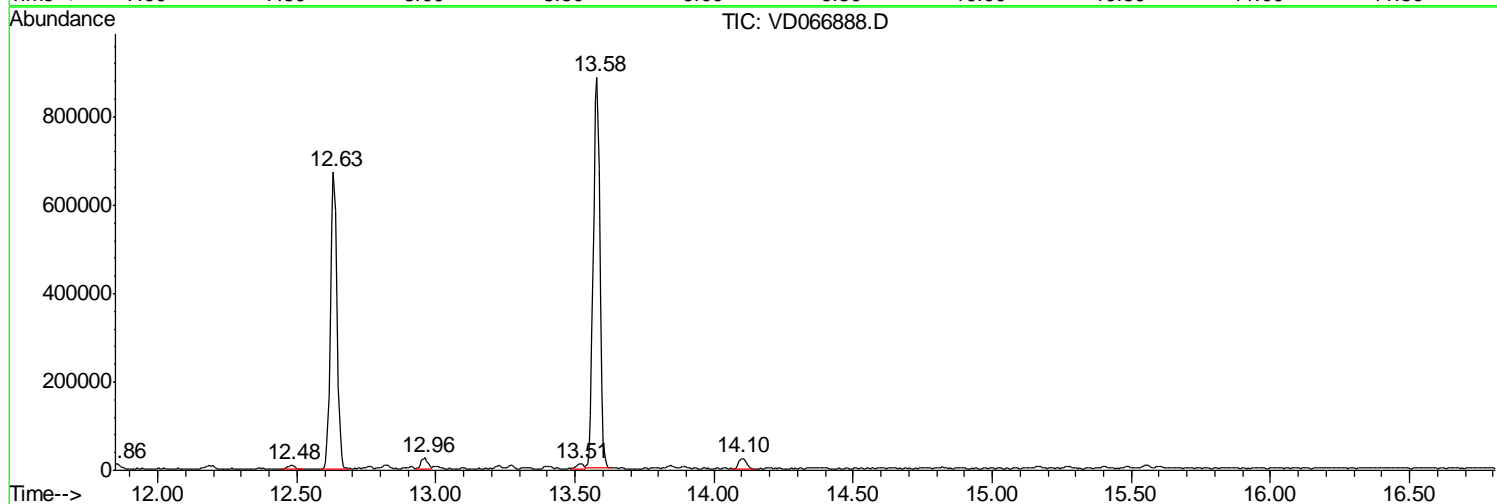
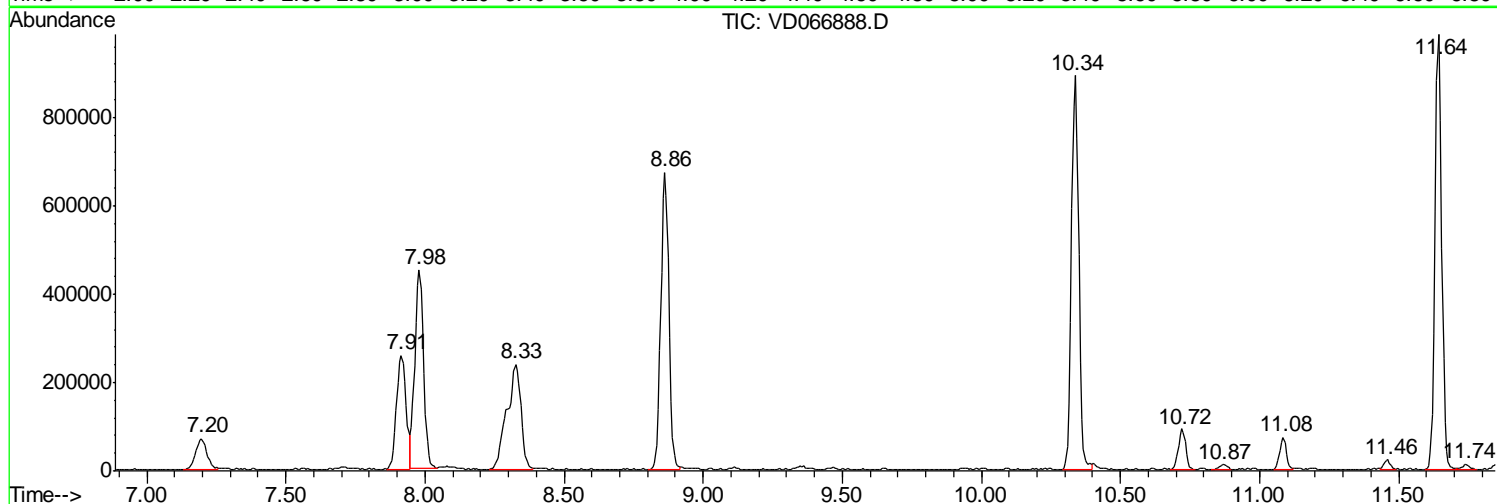
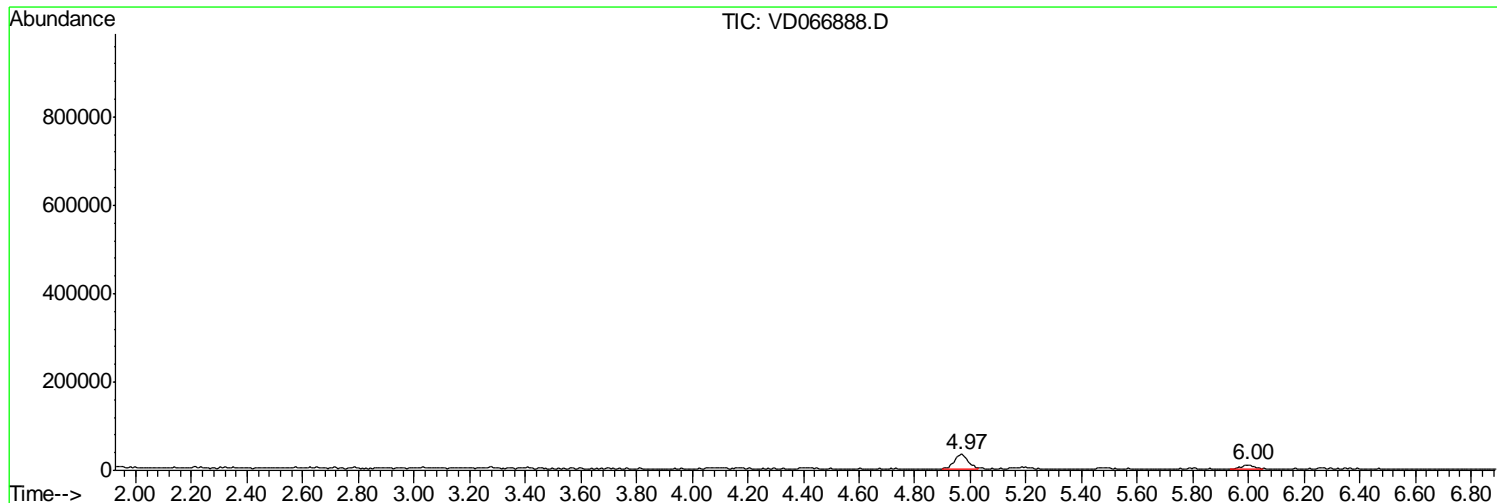
Sum of corrected areas: 10424845

Data Path : Z:\VOASRV\HPCHEM1\MSVOA D\DATA\VD092520\
 Data File : VD066888.D
 Acq On : 25 Sep 2020 23:27
 Operator : VA/SY
 Sample : VD0925SBL02
 Misc : 5.00G/5.00ml/MSVOA D/SOIL
 ALS Vial : 30 Sample Multiplier: 1

Instrument :
 MSVOA_D
 ClientSampleId :
 VD0925SBL02

Quant Method : Z:\VOASRV\HPCHEM1\MSVOA_D\METHOD\82D092220S.M
 Quant Title : SW846 8260

TIC Library : C:\DATABASE\NIST11.L
 TIC Integration Parameters: LSCINT.P



Data Path : Z:\VOASRV\HPCHEM1\MSVOA_D\DATA\VD092520\
Data File : VD066888.D
Acq On : 25 Sep 2020 23:27
Operator : VA/SY
Sample : VD0925SBL02
Misc : 5.00G/5.00ml/MSVOA_D/SOIL
ALS Vial : 30 Sample Multiplier: 1

Instrument :
MSVOA_D
ClientSampleId :
VD0925SBL02

Quant Method : Z:\VOASRV\HPCHEM1\MSVOA_D\METHOD\82D092220S.M
Quant Title : SW846 8260

TIC Library : C:\DATABASE\NIST11.L
TIC Integration Parameters: LSCINT.P

No Library Search Compounds Detected

Data Path : Z:\VOASRV\HPCHEM1\MSVOA_D\DATA\VD092520\
Data File : VD066888.D
Acq On : 25 Sep 2020 23:27
Operator : VA/SY
Sample : VD0925SBL02
Misc : 5.00G/5.00ml/MSVOA_D/SOIL
ALS Vial : 30 Sample Multiplier: 1

Instrument :
MSVOA_D
ClientSampleId :
VD0925SBL02

Quant Method : Z:\VOASRV\HPCHEM1\MSVOA_D\METHOD\82D092220S.M
Quant Title : SW846 8260

TIC Library : C:\DATABASE\NIST11.L
TIC Integration Parameters: LSCINT.P

TIC Top Hit name	RT	EstConc	Units	Response	--Internal Standard--			
					#	RT	Resp	Conc
