

Data Path : Z:\VOASRV\HPCHEM1\MSVOA D\DATA\VD092520\
 Data File : VD066899.D
 Acq On : 26 Sep 2020 04:28
 Operator : VA/SY
 Sample : L4154-09
 Misc : 5.08G/5.00ml/MSVOA D/SOIL
 ALS Vial : 41 Sample Multiplier: 1

Instrument :
 MSVOA_D
 ClientSampleId :
 B-5(11-13)

Integration Parameters: RTEINT.P
 Integrator: RTE
 Smoothing : ON Filtering: 5
 Sampling : 1 Min Area: 3 % of largest Peak
 Start Thrs: 0.2 Max Peaks: 100
 Stop Thrs : 0 Peak Location: TOP

If leading or trailing edge < 100 prefer < Baseline drop else tangent >
 Peak separation: 5

Method : Z:\VOASRV\HPCHEM1\MSVOA_D\METHOD\82D092220S.M
 Title : SW846 8260

Signal : TIC

peak #	R.T. min	first scan	max scan	last scan	PK TY	peak height	corr. area	corr. % max.	% of total
1	4.973	506	519	535	rBV3	30472	103615	4.10%	0.744%
2	5.997	682	693	705	rVB4	12763	37617	1.49%	0.270%
3	7.191	886	896	909	rBV2	44625	123574	4.89%	0.887%
4	7.914	1008	1019	1024	rBV	254788	611816	24.21%	4.391%
5	7.979	1024	1030	1046	rVB	645807	1430804	56.62%	10.268%
6	8.326	1074	1089	1104	rBV2	277549	752846	29.79%	5.403%
7	8.861	1171	1180	1191	rBV	913787	1834373	72.59%	13.164%
8	10.338	1421	1431	1439	rBV	1398264	2527128	100.00%	18.136%
9	11.455	1616	1621	1629	rVB4	14024	25679	1.02%	0.184%
10	11.644	1643	1653	1665	rBV	1396092	2348061	92.91%	16.851%
11	12.632	1813	1821	1830	rVB	1100790	1799983	71.23%	12.918%
12	13.579	1974	1982	1991	rVB	1374340	2269461	89.80%	16.287%
13	15.408	2284	2293	2298	rVB2	35030	69394	2.75%	0.498%

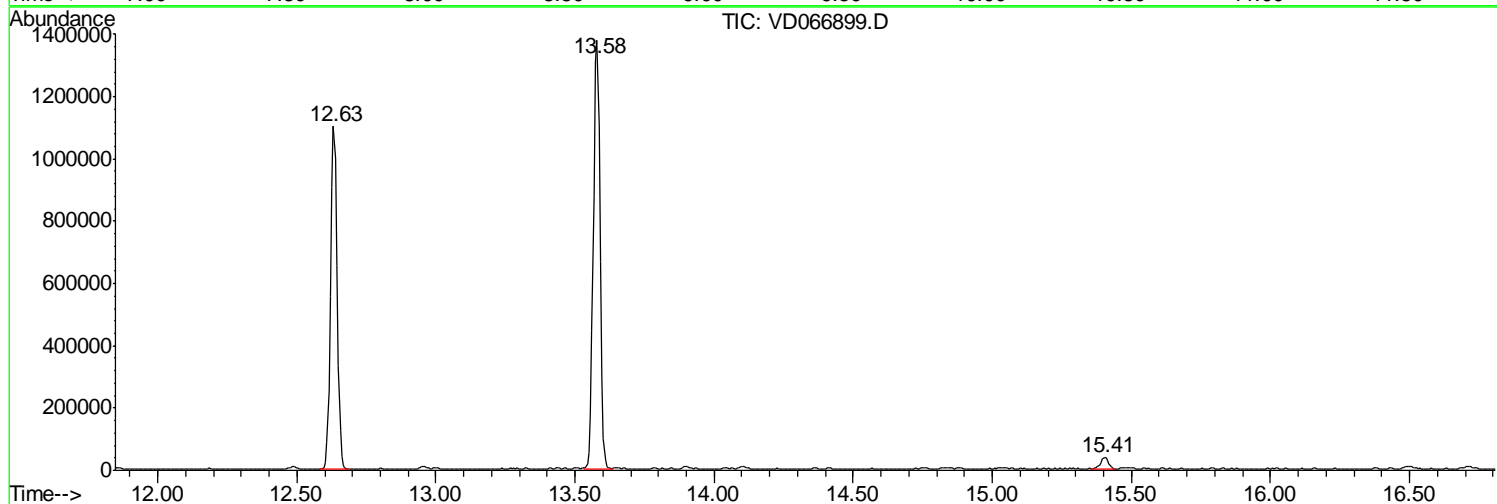
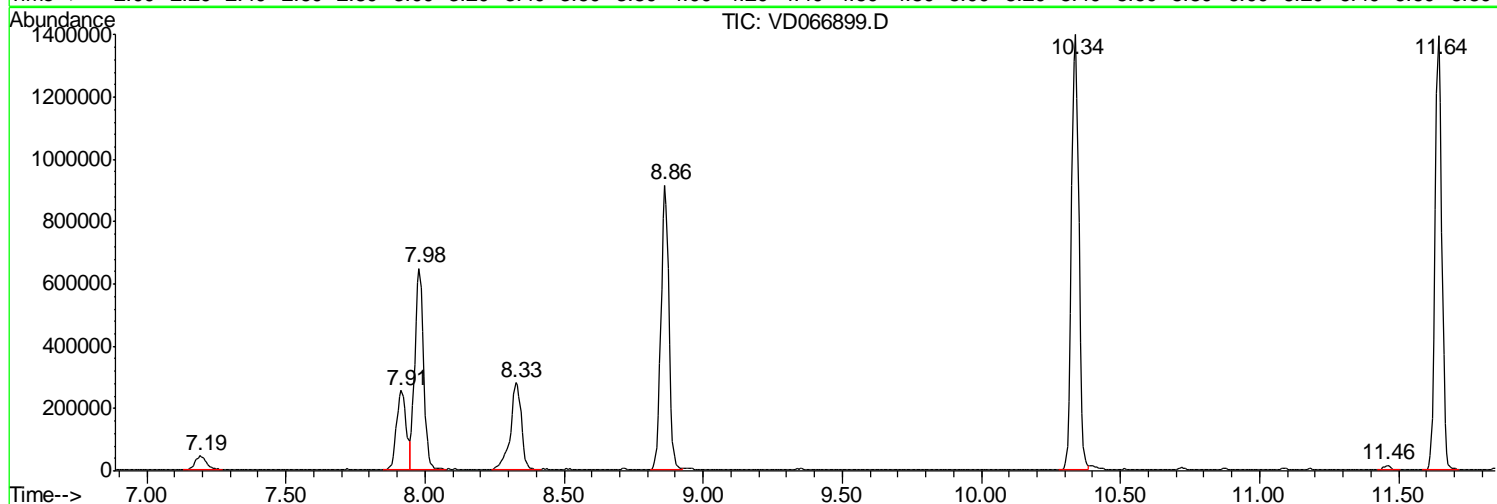
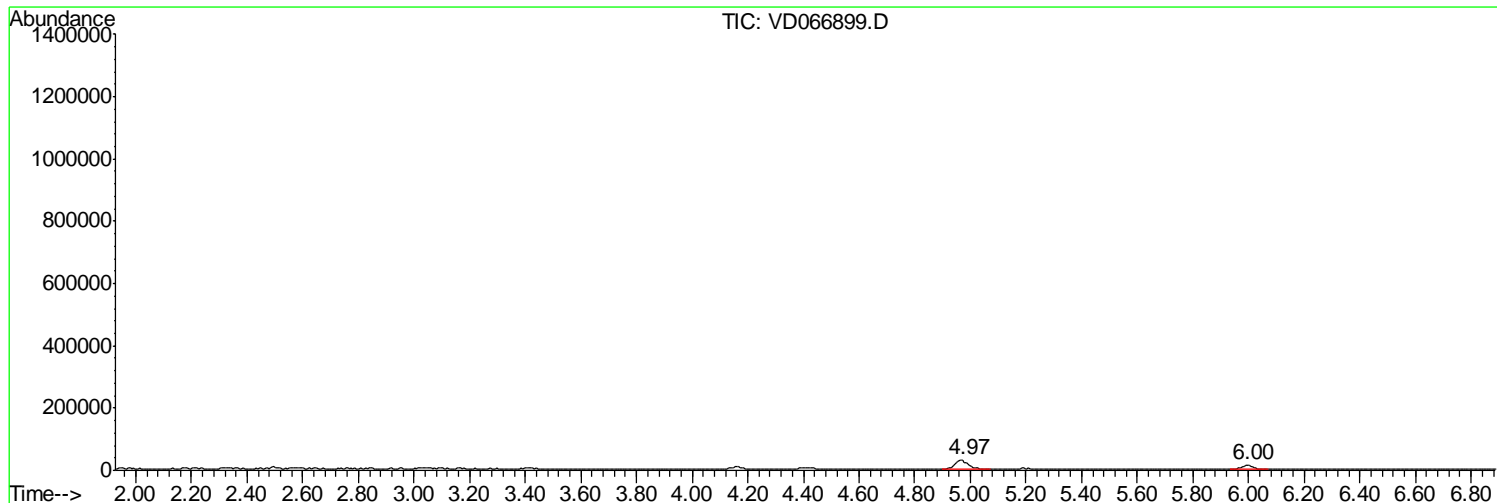
Sum of corrected areas: 13934351

Data Path : Z:\VOASRV\HPCHEM1\MSVOA D\DATA\VD092520\
 Data File : VD066899.D
 Acq On : 26 Sep 2020 04:28
 Operator : VA/SY
 Sample : L4154-09
 Misc : 5.08G/5.00ml/MSVOA D/SOIL
 ALS Vial : 41 Sample Multiplier: 1

Instrument :
 MSVOA_D
 ClientSampleId :
 B-5(11-13)

Quant Method : Z:\VOASRV\HPCHEM1\MSVOA_D\METHOD\82D092220S.M
 Quant Title : SW846 8260

TIC Library : C:\DATABASE\NIST11.L
 TIC Integration Parameters: LSCINT.P



Data Path : Z:\VOASRV\HPCHEM1\MSVOA_D\DATA\VD092520\
Data File : VD066899.D
Acq On : 26 Sep 2020 04:28
Operator : VA/SY
Sample : L4154-09
Misc : 5.08G/5.00ml/MSVOA_D/SOIL
ALS Vial : 41 Sample Multiplier: 1

Instrument :
MSVOA_D
ClientSampleId :
B-5(11-13)

Quant Method : Z:\VOASRV\HPCHEM1\MSVOA_D\METHOD\82D092220S.M
Quant Title : SW846 8260

TIC Library : C:\DATABASE\NIST11.L
TIC Integration Parameters: LSCINT.P

No Library Search Compounds Detected

Data Path : Z:\VOASRV\HPCHEM1\MSVOA_D\DATA\VD092520\
Data File : VD066899.D
Acq On : 26 Sep 2020 04:28
Operator : VA/SY
Sample : L4154-09
Misc : 5.08G/5.00ml/MSVOA_D/SOIL
ALS Vial : 41 Sample Multiplier: 1

Instrument :
MSVOA_D
ClientSampleId :
B-5(11-13)

Quant Method : Z:\VOASRV\HPCHEM1\MSVOA_D\METHOD\82D092220S.M
Quant Title : SW846 8260

TIC Library : C:\DATABASE\NIST11.L
TIC Integration Parameters: LSCINT.P

TIC Top Hit name	RT	EstConc	Units	Response	--Internal Standard--			
					#	RT	Resp	Conc
