

Data Path : Z:\voasrv\HPCHEM1\MSVOA_D\Data\VD092823\
 Data File : VD077236.D
 Acq On : 28 Sep 2023 18:18
 Operator : JC/SY
 Sample : 04668-05
 Misc : 5.01G/5.0ml/MSVOA_D/SOIL
 ALS Vial : 11 Sample Multiplier: 1

Instrument :
 MSVOA_D
 ClientSampleId :

Quant Time: Sep 29 02:21:09 2023
 Quant Method : Z:\voasrv\HPCHEM1\MSVOA_D\Method\82D091823S.M
 Quant Title : SW846 8260
 QLast Update : Tue Sep 19 04:46:37 2023
 Response via : Initial Calibration

Compound	R.T.	QIon	Response	Conc	Units	Dev(Min)

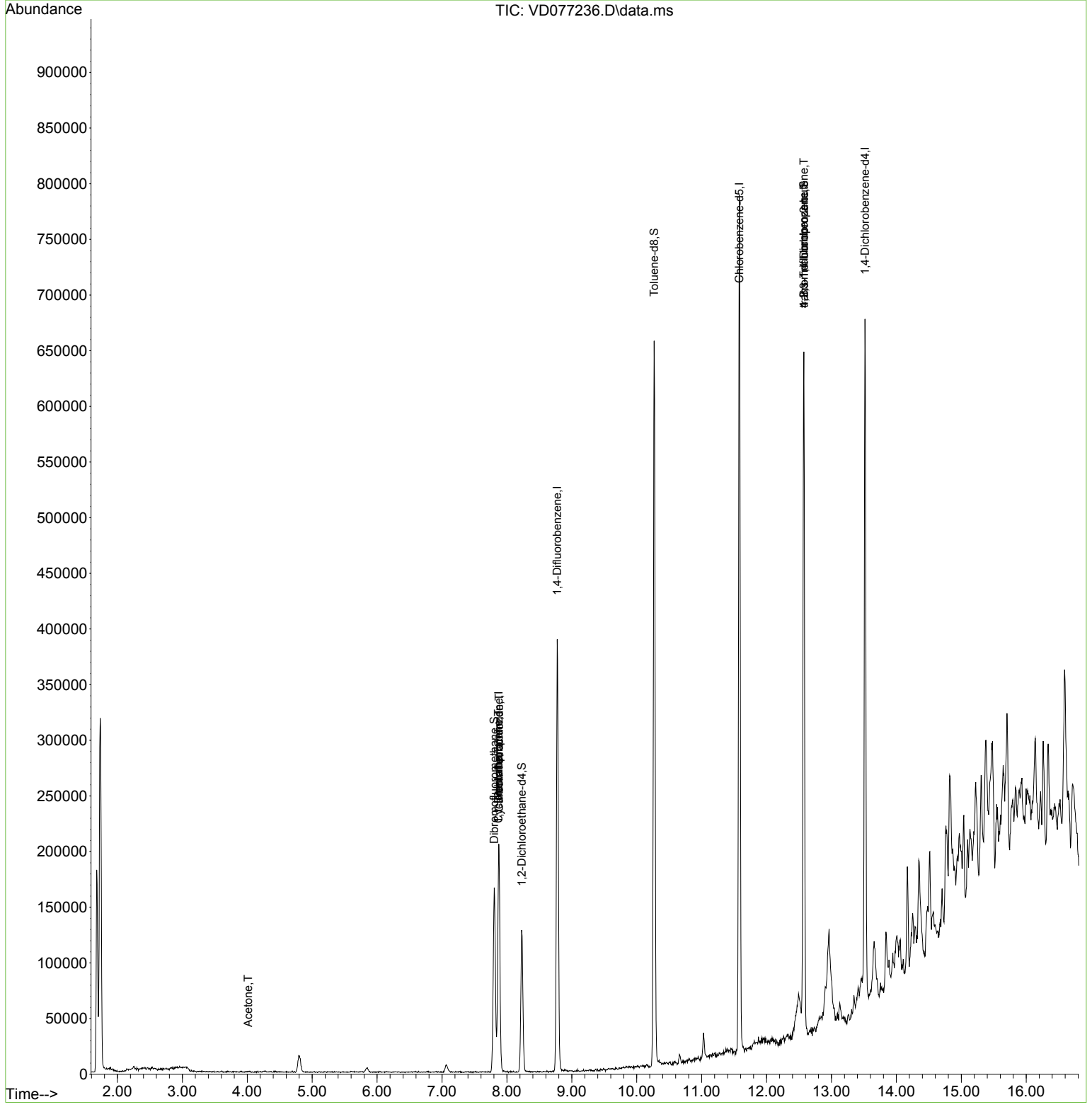
Internal Standards						
1) Pentafluorobenzene	7.875	168	160678	50.000	ug/l	0.00
34) 1,4-Difluorobenzene	8.775	114	355252	50.000	ug/l	0.00
63) Chlorobenzene-d5	11.581	117	461962	50.000	ug/l	0.00
72) 1,4-Dichlorobenzene-d4	13.516	152	167209	50.000	ug/l	0.00
System Monitoring Compounds						
33) 1,2-Dichloroethane-d4	8.228	65	96742	59.659	ug/l	0.00
Spiked Amount	50.000	Range	50 - 163	Recovery	=	119.320%
35) Dibromofluoromethane	7.805	113	119278	48.338	ug/l	0.00
Spiked Amount	50.000	Range	54 - 147	Recovery	=	96.680%
50) Toluene-d8	10.269	98	464316	52.865	ug/l	0.00
Spiked Amount	50.000	Range	58 - 134	Recovery	=	105.740%
62) 4-Bromofluorobenzene	12.575	95	193995	71.263	ug/l	0.00
Spiked Amount	50.000	Range	30 - 143	Recovery	=	142.520%
Target Compounds						
					Qvalue	
13) Acrolein	3.875	56	54	Below Cal	#	15
16) Acetone	4.016	43	444	1.198	ug/l	91
20) Methylene Chloride	4.805	84	12360	Below Cal		98
31) Cyclohexane	7.869	56	3255	1.147	ug/l #	10
36) 1,1-Dichloropropene	7.869	75	13046	3.511	ug/l #	47
38) Carbon Tetrachloride	7.881	117	16287	4.459	ug/l #	16
76) 1,2,3-Trichloropropane	12.575	75	99816	74.837	ug/l #	100
81) trans-1,4-Dichloro-2-b...	12.575	75	99816	141.651	ug/l #	18

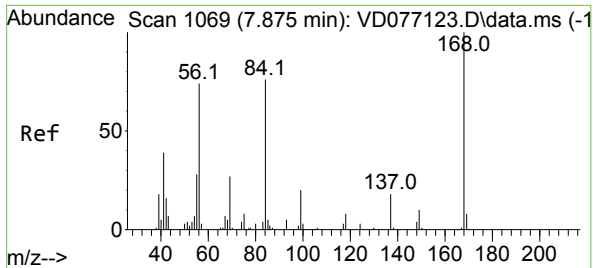
(#) = qualifier out of range (m) = manual integration (+) = signals summed

Data Path : Z:\voasrv\HPCHEM1\MSVOA_D\Data\VD092823\
Data File : VD077236.D
Acq On : 28 Sep 2023 18:18
Operator : JC/SY
Sample : 04668-05
Misc : 5.01G/5.0ml/MSVOA_D/SOIL
ALS Vial : 11 Sample Multiplier: 1

Instrument :
MSVOA_D
ClientSampleId :

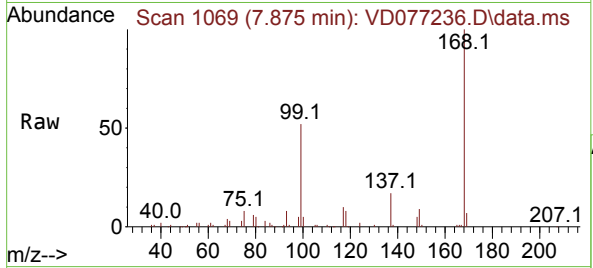
Quant Time: Sep 29 02:21:09 2023
Quant Method : Z:\voasrv\HPCHEM1\MSVOA_D\Method\82D091823S.M
Quant Title : SW846 8260
QLast Update : Tue Sep 19 04:46:37 2023
Response via : Initial Calibration



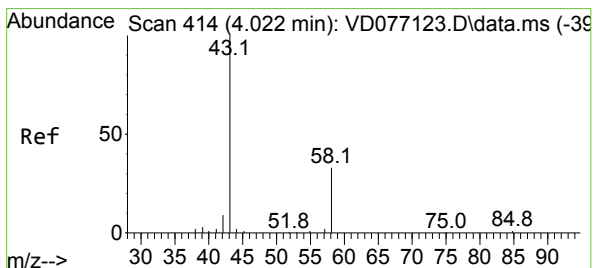
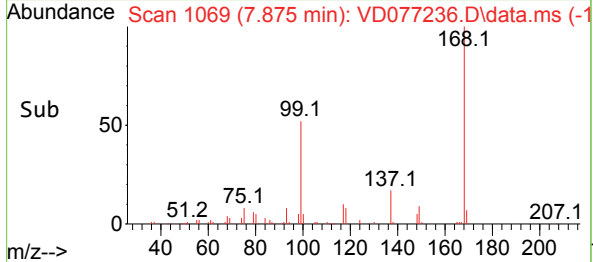
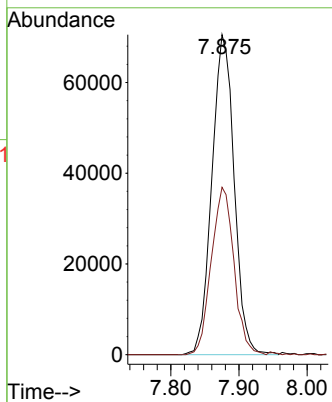


#1
 Pentafluorobenzene
 Concen: 50.000 ug/l
 RT: 7.875 min Scan# 1069
 Delta R.T. 0.000 min
 Lab File: VD077236.D
 Acq: 28 Sep 2023 18:18

Instrument : MSVOA_D
 ClientSampleId :

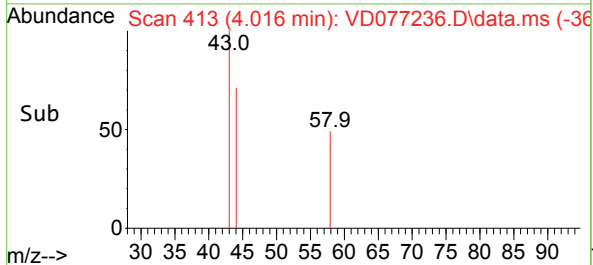
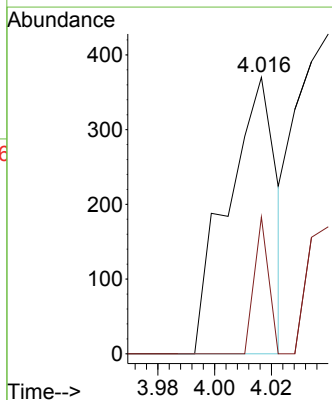
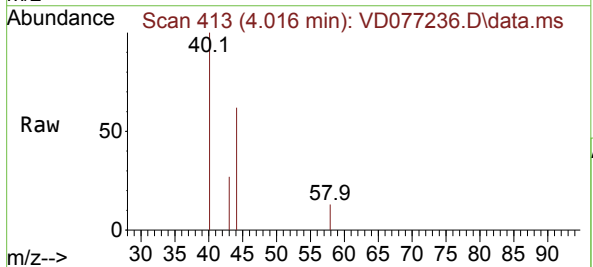


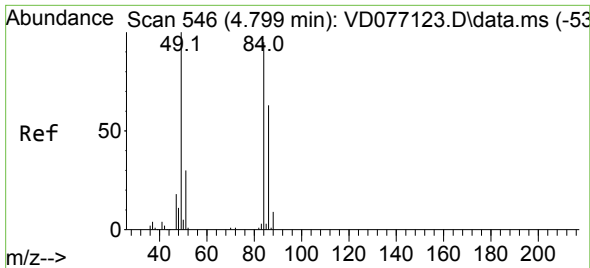
Tgt Ion:168 Resp: 160678
 Ion Ratio Lower Upper
 168 100
 99 52.3 36.7 55.1



#16
 Acetone
 Concen: 1.198 ug/l
 RT: 4.016 min Scan# 413
 Delta R.T. -0.006 min
 Lab File: VD077236.D
 Acq: 28 Sep 2023 18:18

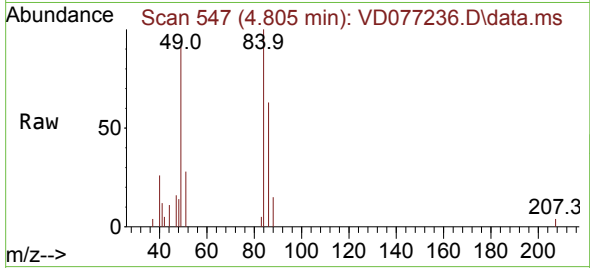
Tgt Ion: 43 Resp: 444
 Ion Ratio Lower Upper
 43 100
 58 49.5 34.7 52.1





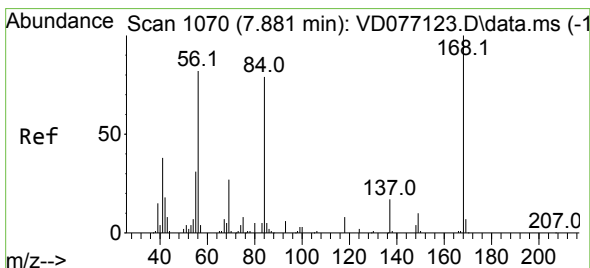
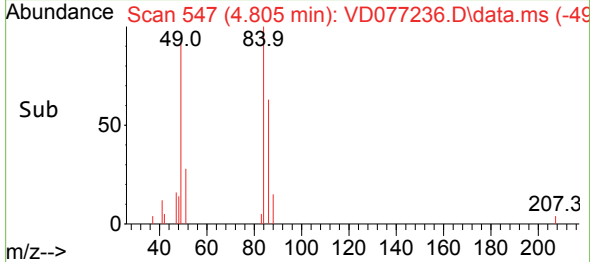
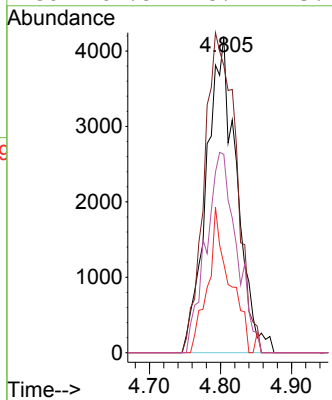
#20
 Methylene Chloride
 Concen: Below Cal
 RT: 4.805 min Scan# 546
 Delta R.T. 0.006 min
 Lab File: VD077236.D
 Acq: 28 Sep 2023 18:18

Instrument :
 MSVOA_D
 ClientSampleId :

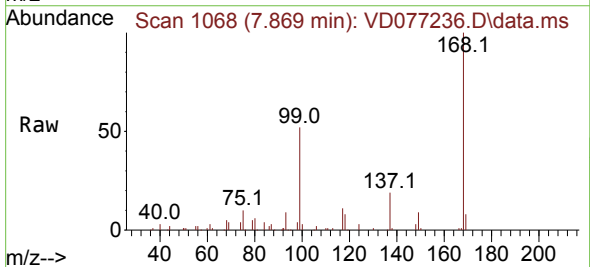


Tgt Ion: 84 Resp: 12360

Ion	Ratio	Lower	Upper
84	100		
49	91.0	71.4	107.2
51	28.2	24.5	36.7
86	62.8	48.7	73.1

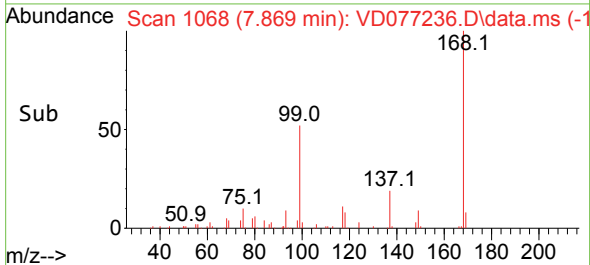
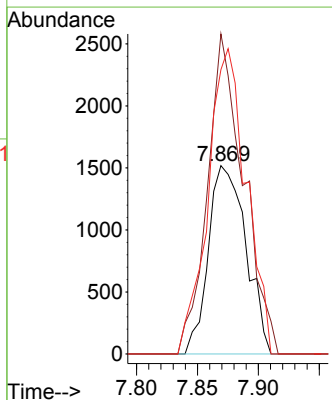


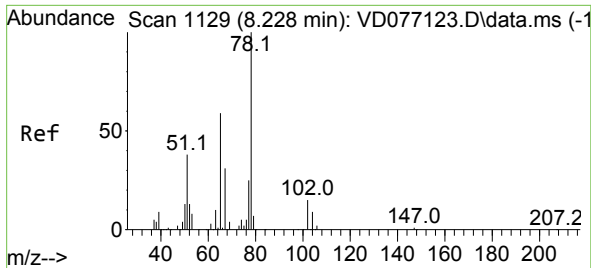
#31
 Cyclohexane
 Concen: 1.147 ug/l
 RT: 7.869 min Scan# 1068
 Delta R.T. -0.012 min
 Lab File: VD077236.D
 Acq: 28 Sep 2023 18:18



Tgt Ion: 56 Resp: 3255

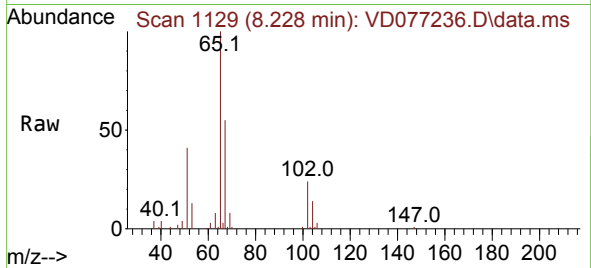
Ion	Ratio	Lower	Upper
56	100		
69	169.8	28.6	43.0#
84	151.0	84.8	127.2#



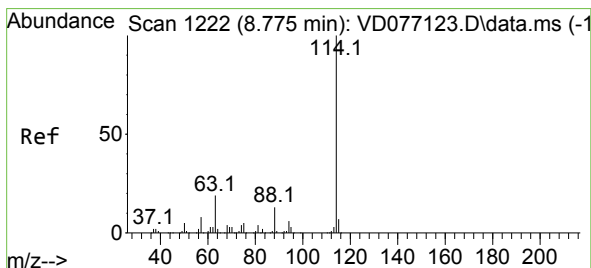
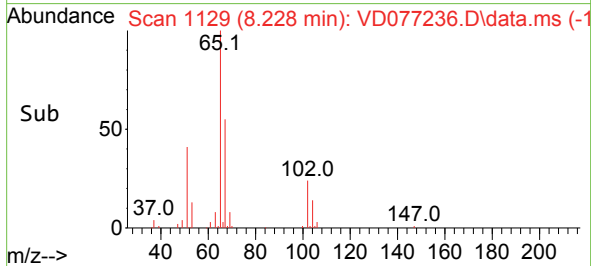
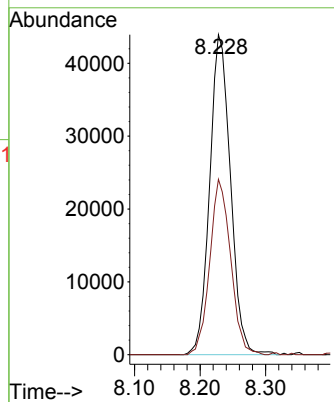


#33
 1,2-Dichloroethane-d4
 Concen: 59.659 ug/l
 RT: 8.228 min Scan# 1129
 Delta R.T. 0.000 min
 Lab File: VD077236.D
 Acq: 28 Sep 2023 18:18

Instrument : MSVOA_D
 ClientSampleId :

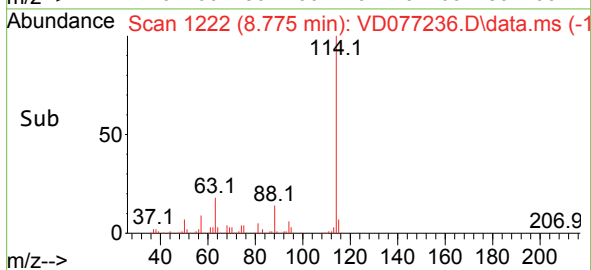
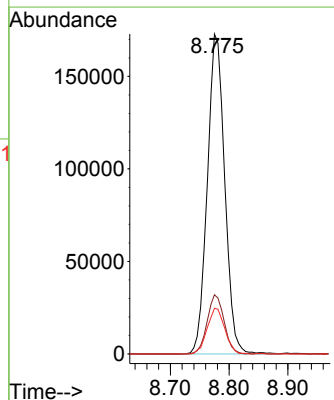
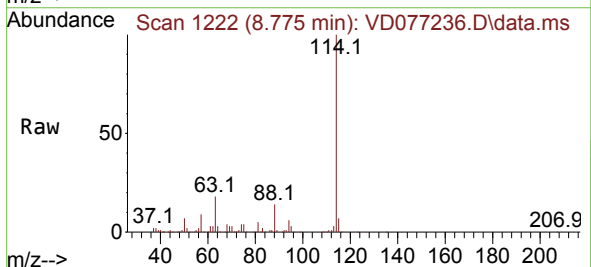


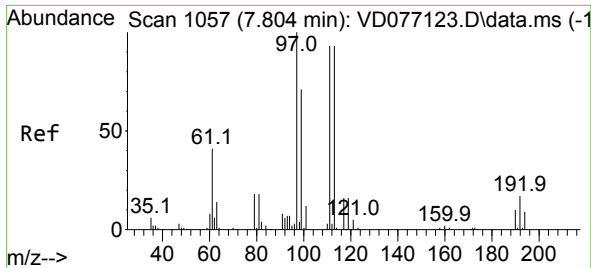
Tgt Ion: 65 Resp: 96742
 Ion Ratio Lower Upper
 65 100
 67 55.0 0.0 115.0



#34
 1,4-Difluorobenzene
 Concen: 50.000 ug/l
 RT: 8.775 min Scan# 1222
 Delta R.T. 0.000 min
 Lab File: VD077236.D
 Acq: 28 Sep 2023 18:18

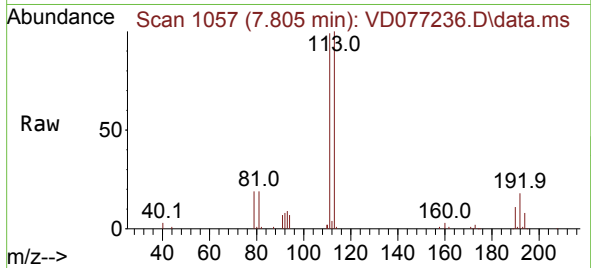
Tgt Ion: 114 Resp: 355252
 Ion Ratio Lower Upper
 114 100
 63 18.5 0.0 33.4
 88 14.3 0.0 26.2



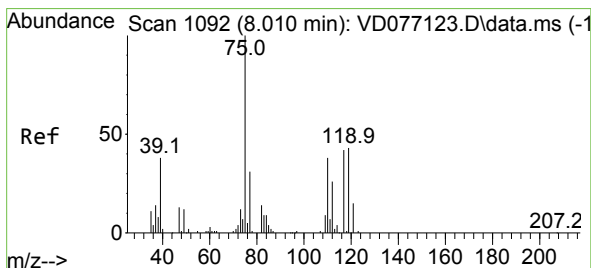
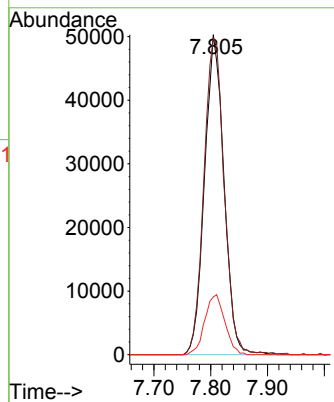
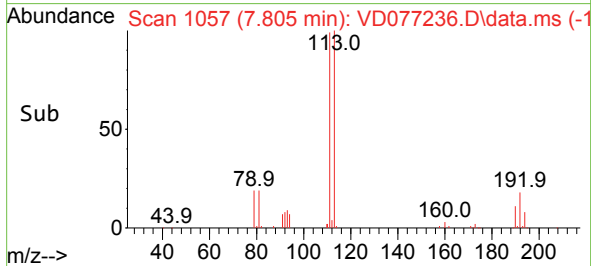


#35
 Dibromofluoromethane
 Concen: 48.338 ug/l
 RT: 7.805 min Scan# 1068
 Delta R.T. 0.000 min
 Lab File: VD077236.D
 Acq: 28 Sep 2023 18:18

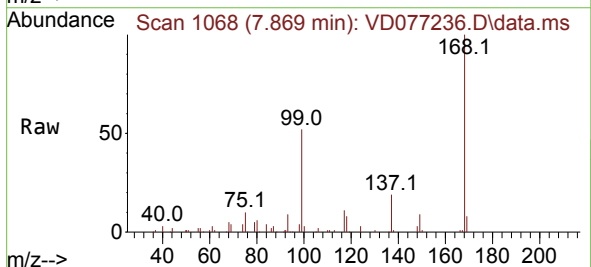
Instrument : MSVOA_D
 ClientSampleId :



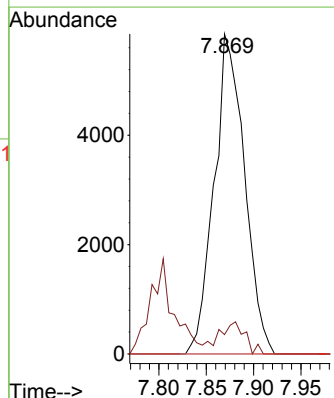
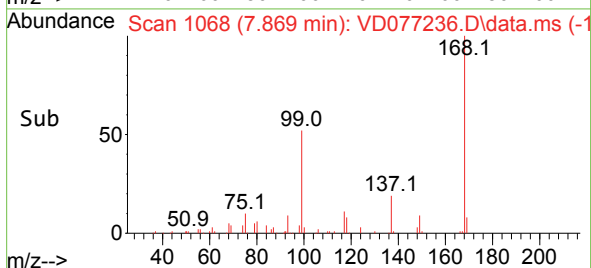
Tgt Ion:113 Resp: 119278
 Ion Ratio Lower Upper
 113 100
 111 103.1 84.7 127.1
 192 19.4 16.8 25.2

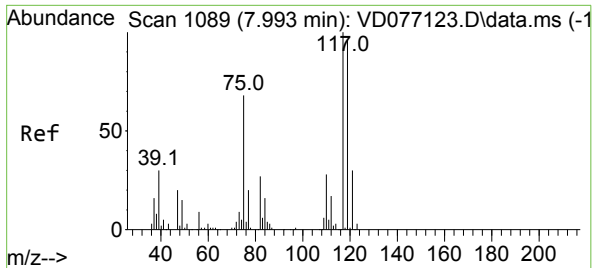


#36
 1,1-Dichloropropene
 Concen: 3.511 ug/l
 RT: 7.869 min Scan# 1068
 Delta R.T. -0.141 min
 Lab File: VD077236.D
 Acq: 28 Sep 2023 18:18



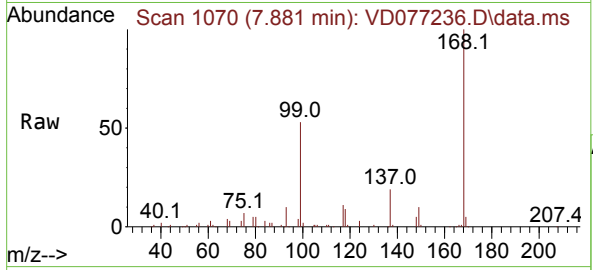
Tgt Ion: 75 Resp: 13046
 Ion Ratio Lower Upper
 75 100
 110 8.8 19.9 59.6#
 77 0.0 24.7 37.1#



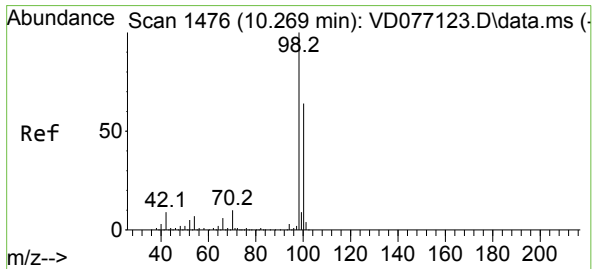
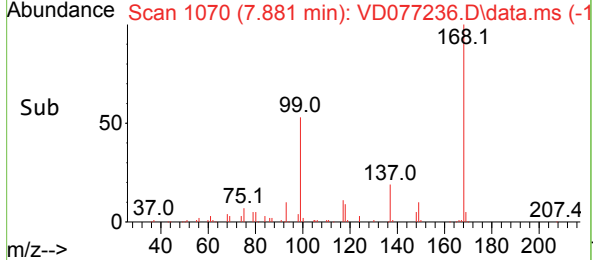
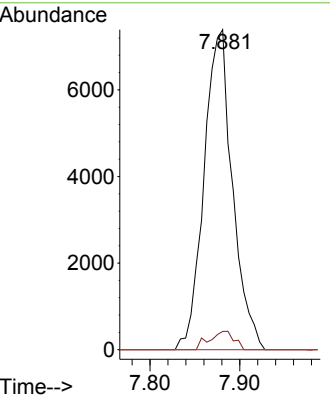


#38
 Carbon Tetrachloride
 Concen: 4.459 ug/l
 RT: 7.881 min Scan# 1070
 Delta R.T. -0.112 min
 Lab File: VD077236.D
 Acq: 28 Sep 2023 18:18

Instrument : MSVOA_D
 ClientSampleId :

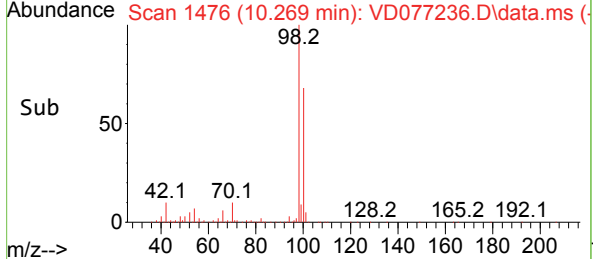
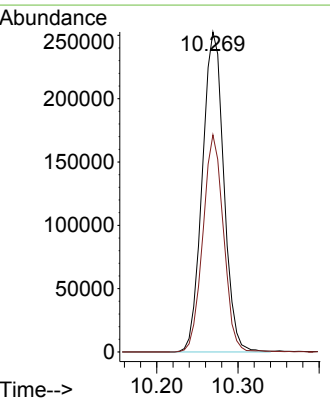
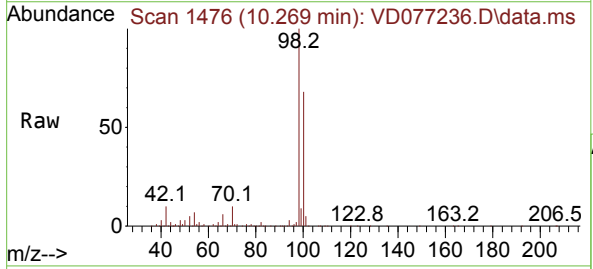


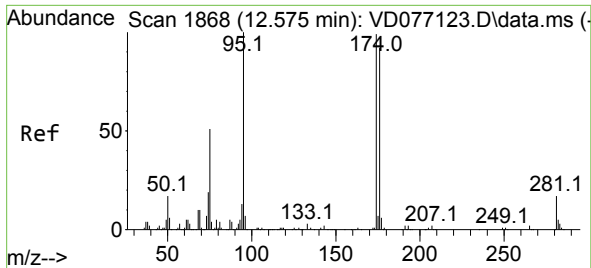
Tgt Ion:117 Resp: 16287
 Ion Ratio Lower Upper
 117 100
 119 5.7 78.0 117.0#
 121 0.0 24.2 36.2#



#50
 Toluene-d8
 Concen: 52.865 ug/l
 RT: 10.269 min Scan# 1476
 Delta R.T. 0.000 min
 Lab File: VD077236.D
 Acq: 28 Sep 2023 18:18

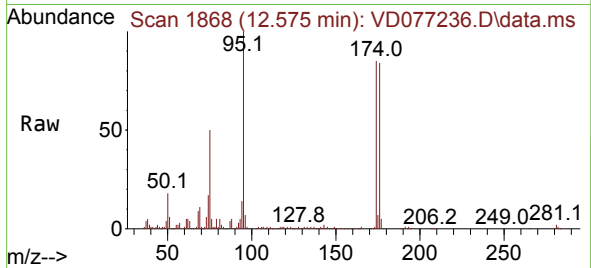
Tgt Ion: 98 Resp: 464316
 Ion Ratio Lower Upper
 98 100
 100 65.3 50.3 75.5



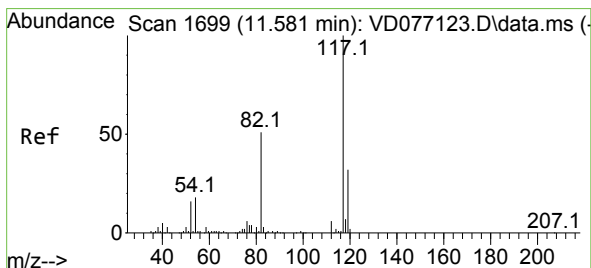
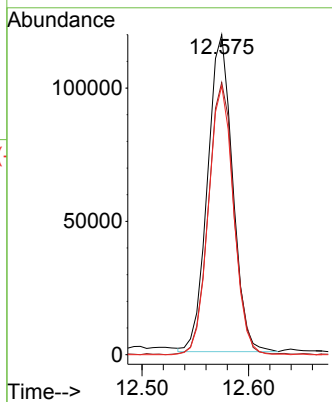
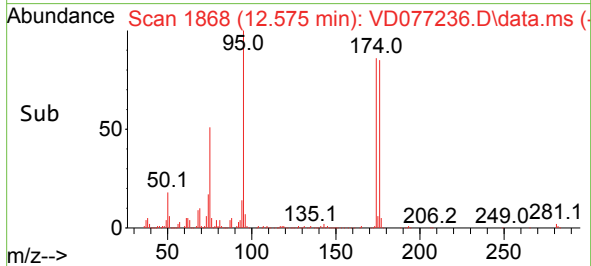


#62
 4-Bromofluorobenzene
 Concen: 71.263 ug/l
 RT: 12.575 min Scan# 1868
 Delta R.T. 0.000 min
 Lab File: VD077236.D
 Acq: 28 Sep 2023 18:18

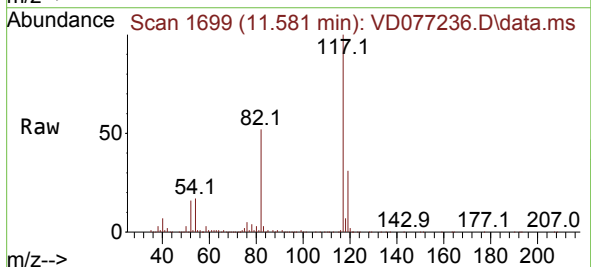
Instrument : MSVOA_D
 ClientSampleId :



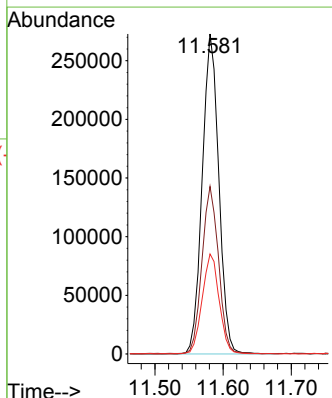
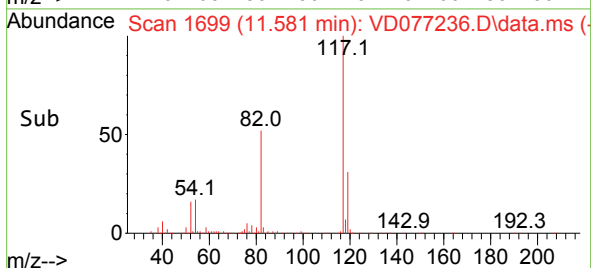
Tgt Ion: 95 Resp: 193995
 Ion Ratio Lower Upper
 95 100
 174 87.5 0.0 201.8
 176 85.0 0.0 191.8

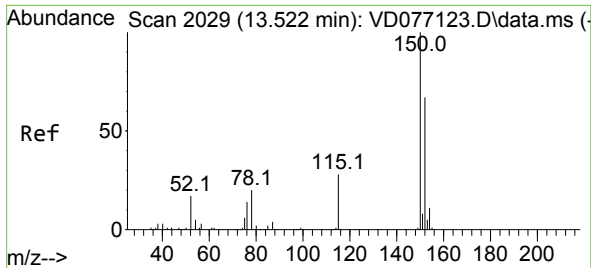


#63
 Chlorobenzene-d5
 Concen: 50.000 ug/l
 RT: 11.581 min Scan# 1699
 Delta R.T. 0.000 min
 Lab File: VD077236.D
 Acq: 28 Sep 2023 18:18



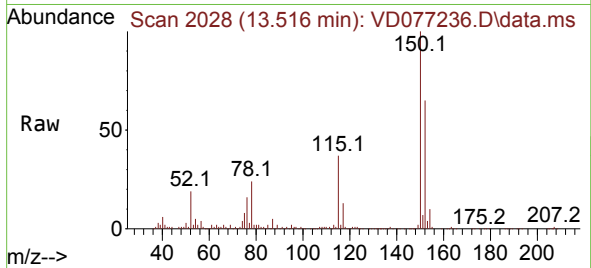
Tgt Ion: 117 Resp: 461962
 Ion Ratio Lower Upper
 117 100
 82 52.2 38.3 57.5
 119 31.2 25.0 37.4



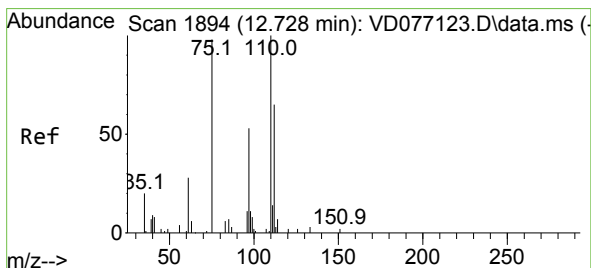
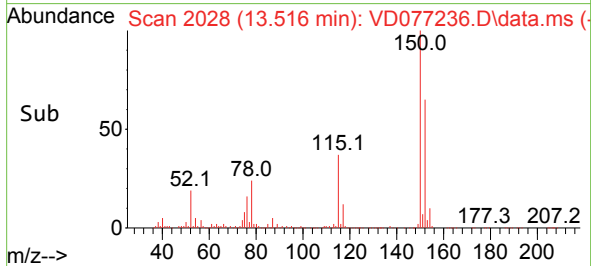
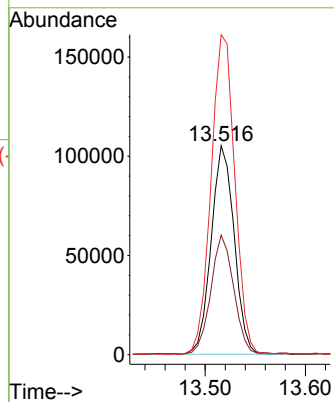


#72
 1,4-Dichlorobenzene-d4
 Concen: 50.000 ug/l
 RT: 13.516 min Scan# 2029
 Delta R.T. -0.006 min
 Lab File: VD077236.D
 Acq: 28 Sep 2023 18:18

Instrument : MSVOA_D
 ClientSampleId :

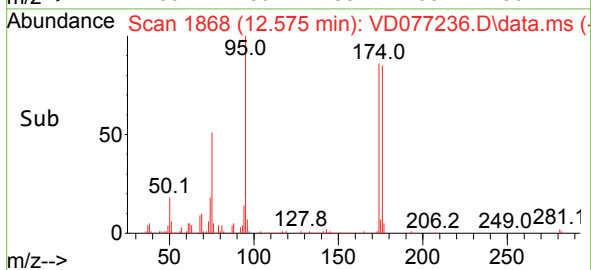
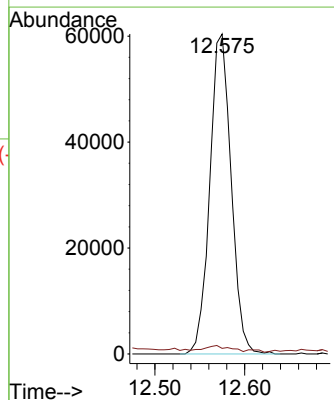
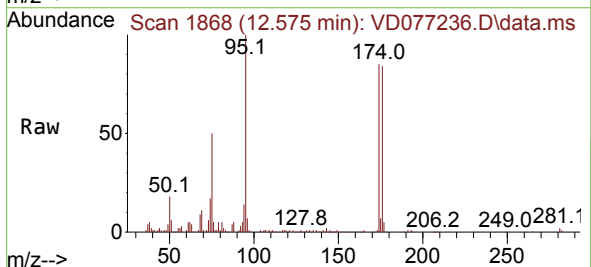


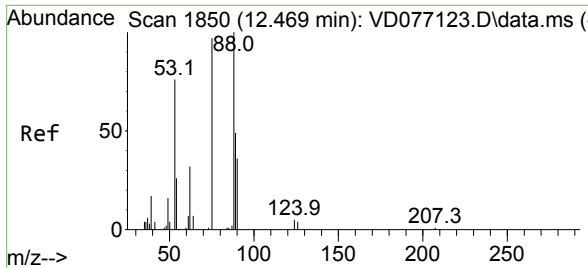
Tgt Ion:152 Resp: 167209
 Ion Ratio Lower Upper
 152 100
 115 57.0 27.1 81.3
 150 158.8 0.0 353.6



#76
 1,2,3-Trichloropropane
 Concen: 74.837 ug/l
 RT: 12.575 min Scan# 1868
 Delta R.T. -0.153 min
 Lab File: VD077236.D
 Acq: 28 Sep 2023 18:18

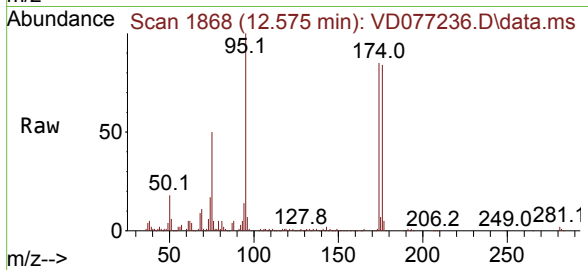
Tgt Ion: 75 Resp: 99816
 Ion Ratio Lower Upper
 75 100
 77 2.1 0.0 0.0#





#81
 trans-1,4-Dichloro-2-butene
 Concen: 141.651 ug/l
 RT: 12.575 min Scan# 1868
 Delta R.T. 0.106 min
 Lab File: VD077236.D
 Acq: 28 Sep 2023 18:18

Instrument :
 MSVOA_D
 ClientSampleId :



Tgt Ion: 75 Resp: 99816

Ion	Ratio	Lower	Upper
75	100		
53	0.7	63.0	94.4#
89	0.1	37.9	56.9#

