

Data Path : Z:\VOASRV\HPCHEM1\MSVOA D\DATA\VD092920\
 Data File : VD066938.D
 Acq On : 29 Sep 2020 14:57
 Operator : VA/SY
 Sample : L4172-05
 Misc : 5.08G/5.00ml/MSVOA D/SOIL
 ALS Vial : 13 Sample Multiplier: 1

Instrument :
 MSVOA_D
 ClientSampleId :
 DUP-2

Integration Parameters: RTEINT.P

Integrator: RTE
 Smoothing : ON Filtering: 5
 Sampling : 1 Min Area: 3 % of largest Peak
 Start Thrs: 0.2 Max Peaks: 100
 Stop Thrs : 0 Peak Location: TOP

If leading or trailing edge < 100 prefer < Baseline drop else tangent >
 Peak separation: 5

Method : Z:\VOASRV\HPCHEM1\MSVOA_D\METHOD\82D092220S.M
 Title : SW846 8260

Signal : TIC

peak #	R.T. min	first scan	max scan	last scan	PK TY	peak height	corr. area	corr. % max.	% of total
1	4.968	507	518	532	rBV5	26784	87292	3.82%	0.674%
2	5.991	683	692	703	rVB5	10375	29265	1.28%	0.226%
3	7.197	886	897	906	rBV2	44169	125666	5.51%	0.970%
4	7.914	1008	1019	1024	rBV	311710	747791	32.76%	5.774%
5	7.979	1024	1030	1044	rVB	554730	1261501	55.27%	9.740%
6	8.326	1073	1089	1100	rBV2	249188	666696	29.21%	5.148%
7	8.861	1169	1180	1197	rBV	803629	1634403	71.60%	12.619%
8	10.338	1423	1431	1446	rBV	1271990	2282574	100.00%	17.624%
9	10.720	1486	1496	1505	rBV	44570	81923	3.59%	0.633%
10	11.085	1550	1558	1565	rBV2	34102	58899	2.58%	0.455%
11	11.644	1644	1653	1666	rBV	1273590	2165805	94.88%	16.722%
12	12.632	1814	1821	1831	rBV	986097	1665257	72.96%	12.858%
13	13.579	1973	1982	1990	rBV	1306459	2144390	93.95%	16.557%

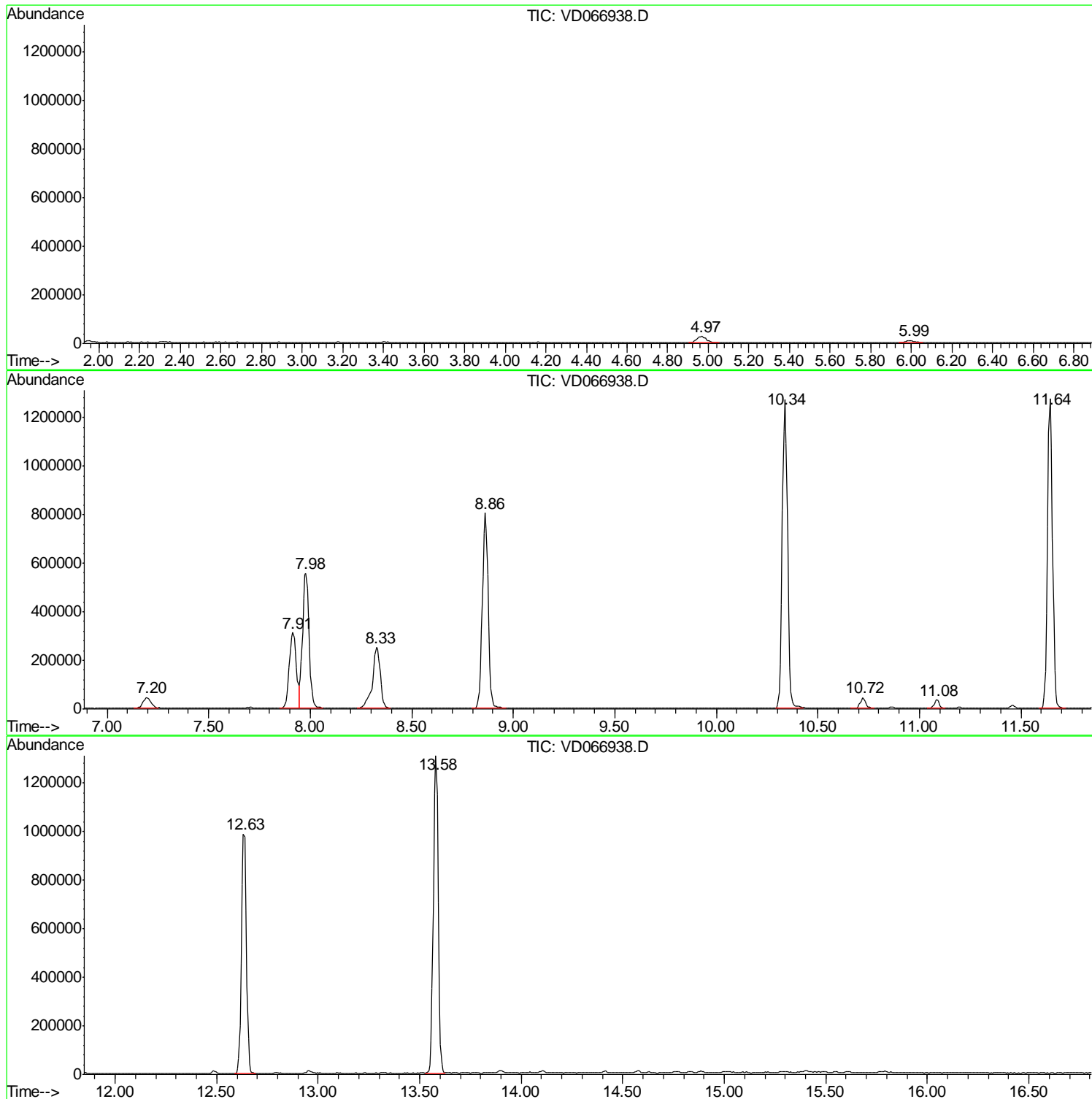
Sum of corrected areas: 12951462

Data Path : Z:\VOASRV\HPCHEM1\MSVOA D\DATA\VD092920\
Data File : VD066938.D
Acq On : 29 Sep 2020 14:57
Operator : VA/SY
Sample : L4172-05
Misc : 5.08G/5.00ml/MSVOA D/SOIL
ALS Vial : 13 Sample Multiplier: 1

Instrument :
MSVOA_D
ClientSampled :
DUP-2

Quant Method : Z:\VOASRV\HPCHEM1\MSVOA_D\METHOD\82D092220S.M
Quant Title : SW846 8260

TIC Library : C:\DATABASE\NIST11.L
TIC Integration Parameters: LSCINT.P



Data Path : Z:\VOASRV\HPCHEM1\MSVOA_D\DATA\VD092920\
Data File : VD066938.D
Acq On : 29 Sep 2020 14:57
Operator : VA/SY
Sample : L4172-05
Misc : 5.08G/5.00ml/MSVOA_D/SOIL
ALS Vial : 13 Sample Multiplier: 1

Instrument :
MSVOA_D
ClientSampleId :
DUP-2

Quant Method : Z:\VOASRV\HPCHEM1\MSVOA_D\METHOD\82D092220S.M
Quant Title : SW846 8260

TIC Library : C:\DATABASE\NIST11.L
TIC Integration Parameters: LSCINT.P

No Library Search Compounds Detected

Data Path : Z:\VOASRV\HPCHEM1\MSVOA_D\DATA\VD092920\
Data File : VD066938.D
Acq On : 29 Sep 2020 14:57
Operator : VA/SY
Sample : L4172-05
Misc : 5.08G/5.00ml/MSVOA_D/SOIL
ALS Vial : 13 Sample Multiplier: 1

Instrument :
MSVOA_D
ClientSampleId :
DUP-2

Quant Method : Z:\VOASRV\HPCHEM1\MSVOA_D\METHOD\82D092220S.M
Quant Title : SW846 8260

TIC Library : C:\DATABASE\NIST11.L
TIC Integration Parameters: LSCINT.P

TIC Top Hit name	RT	EstConc	Units	Response	--Internal Standard--			
					#	RT	Resp	Conc
