

Data Path : Z:\voasrv\HPCHEM1\MSVOA_D\Data\VD093021\
 Data File : VD070542.D
 Acq On : 30 Sep 2021 15:48
 Operator : VA/SY
 Sample : M3975-05
 Misc : 8.13G/5.00ml/MSVOA_D/SOIL
 ALS Vial : 12 Sample Multiplier: 1

Instrument :
 MSVOA_D
 ClientSampleId :
 S-841-R-SO-2-2.5-092821

Quant Time: Oct 01 02:05:00 2021
 Quant Method : Z:\voasrv\HPCHEM1\MSVOA_D\Method\82D090821S.M
 Quant Title : SW846 8260
 QLast Update : Thu Sep 09 03:07:09 2021
 Response via : Initial Calibration

Compound	R.T.	QIon	Response	Conc	Units	Dev(Min)

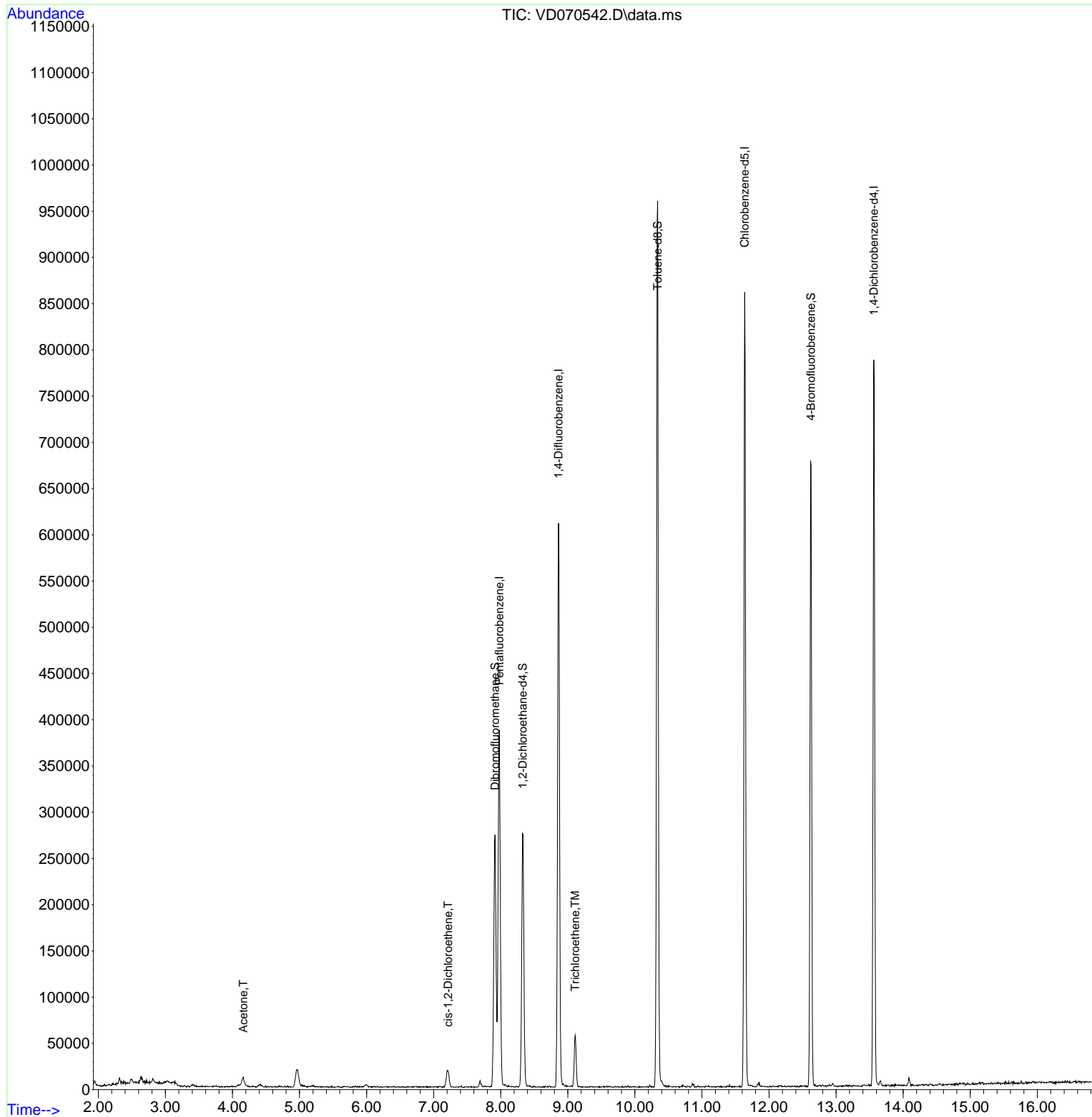
Internal Standards						
1) Pentafluorobenzene	7.979	168	267664	50.000	ug/l	0.00
34) 1,4-Difluorobenzene	8.861	114	531934	50.000	ug/l	0.00
63) Chlorobenzene-d5	11.638	117	512696	50.000	ug/l	0.00
72) 1,4-Dichlorobenzene-d4	13.561	152	213868	50.000	ug/l	0.00
System Monitoring Compounds						
33) 1,2-Dichloroethane-d4	8.326	65	220175	64.063	ug/l	0.00
Spiked Amount	50.000	Range	50 - 163	Recovery	=	128.120%
35) Dibromofluoromethane	7.914	113	200321	52.906	ug/l	0.00
Spiked Amount	50.000	Range	54 - 147	Recovery	=	105.820%
50) Toluene-d8	10.338	98	677133	49.255	ug/l	0.00
Spiked Amount	50.000	Range	49 - 140	Recovery	=	98.520%
62) 4-Bromofluorobenzene	12.626	95	213262	44.388	ug/l	0.00
Spiked Amount	50.000	Range	25 - 144	Recovery	=	88.780%
Target Compounds						
						Qvalue
16) Acetone	4.162	43	17965	29.278	ug/l	96
27) cis-1,2-Dichloroethene	7.215	96	10463	2.626	ug/l	84
44) Trichloroethene	9.109	130	20609	5.175	ug/l	100

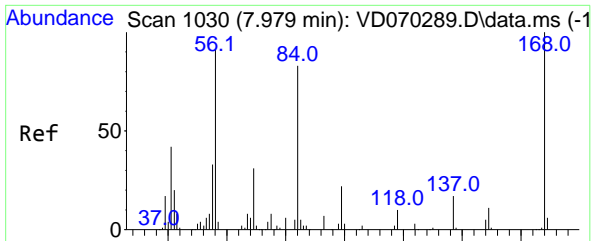
(#) = qualifier out of range (m) = manual integration (+) = signals summed

Data Path : Z:\voasrv\HPCHEM1\MSVOA_D\Data\VD093021\
 Data File : VD070542.D
 Acq On : 30 Sep 2021 15:48
 Operator : VA/SY
 Sample : M3975-05
 Misc : 8.13G/5.00ml/MSVOA_D/SOIL
 ALS Vial : 12 Sample Multiplier: 1

Instrument :
 MSVOA_D
 ClientSampleID :
 S-841-R-SO-2-2.5-092821

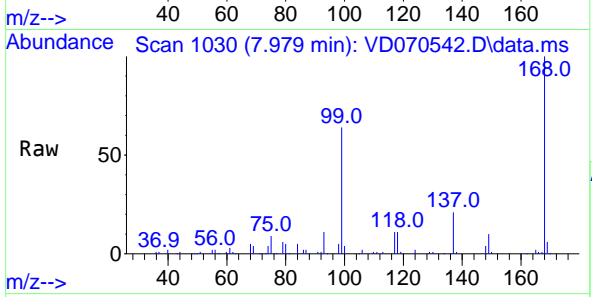
Quant Time: Oct 01 02:05:00 2021
 Quant Method : Z:\voasrv\HPCHEM1\MSVOA_D\Method\82D090821S.M
 Quant Title : SW846 8260
 QLast Update : Thu Sep 09 03:07:09 2021
 Response via : Initial Calibration



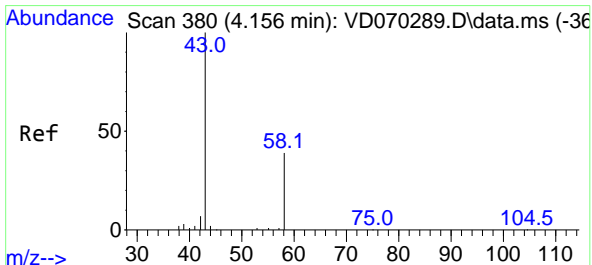
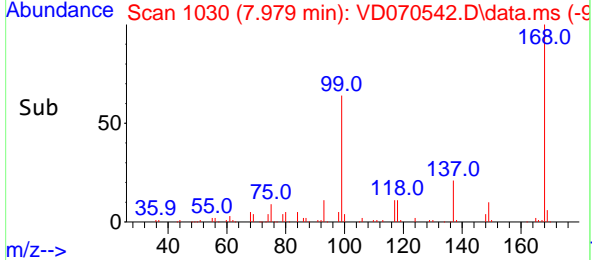
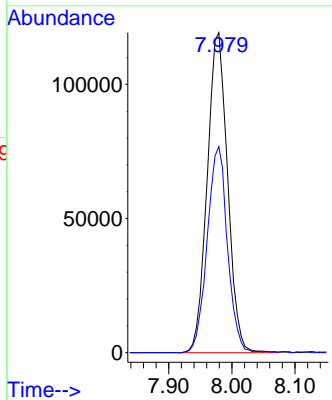


#1
 Pentafluorobenzene
 Concen: 50.000 ug/l
 RT: 7.979 min Scan# 1030
 Delta R.T. 0.000 min
 Lab File: VD070542.D
 Acq: 30 Sep 2021 15:48

Instrument :
 MSVOA_D
ClientSampleId :
 S-841-R-SO-2-2.5-092821

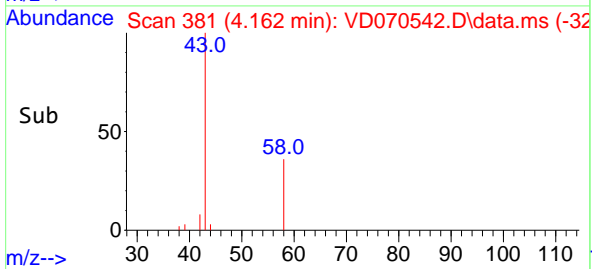
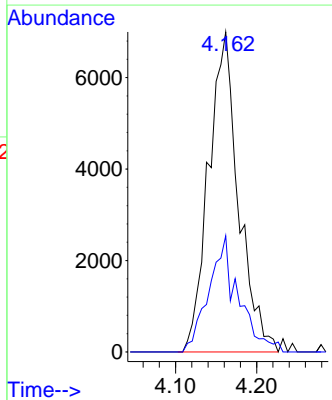
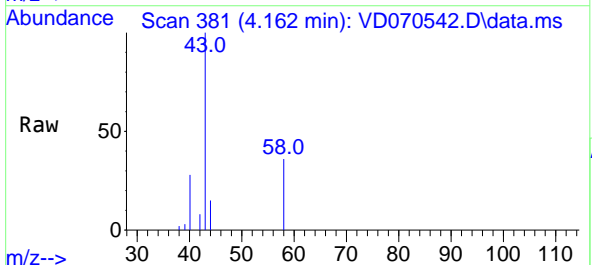


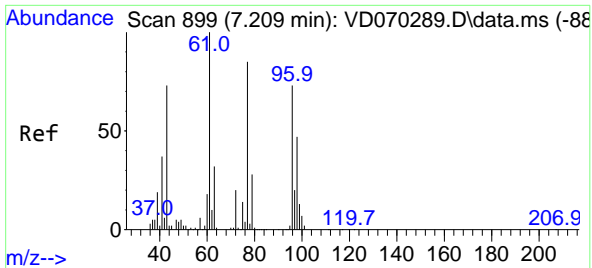
Tgt Ion:168 Resp: 267664
 Ion Ratio Lower Upper
 168 100
 99 64.4 50.8 76.2



#16
 Acetone
 Concen: 29.278 ug/l
 RT: 4.162 min Scan# 381
 Delta R.T. 0.006 min
 Lab File: VD070542.D
 Acq: 30 Sep 2021 15:48

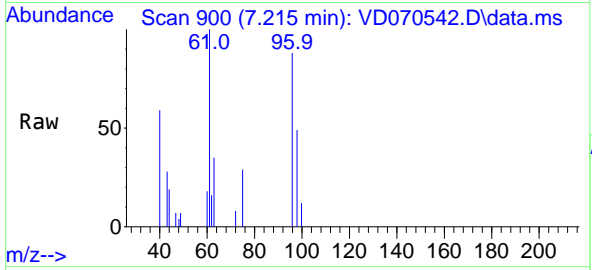
Tgt Ion: 43 Resp: 17965
 Ion Ratio Lower Upper
 43 100
 58 36.3 30.9 46.3





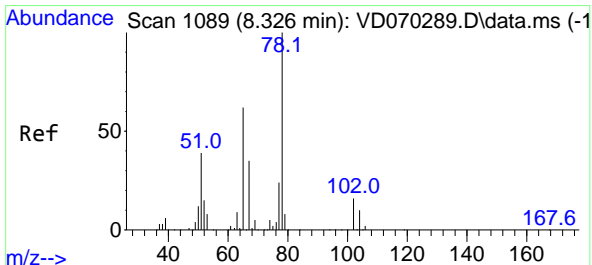
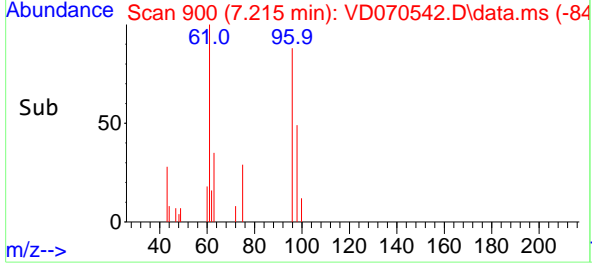
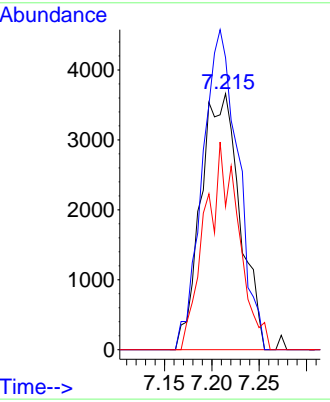
#27
 cis-1,2-Dichloroethene
 Concen: 2.626 ug/l
 RT: 7.215 min Scan# 900
 Delta R.T. 0.006 min
 Lab File: VD070542.D
 Acq: 30 Sep 2021 15:48

Instrument :
 MSVOA_D
ClientSampleId :
 S-841-R-SO-2-2.5-092821

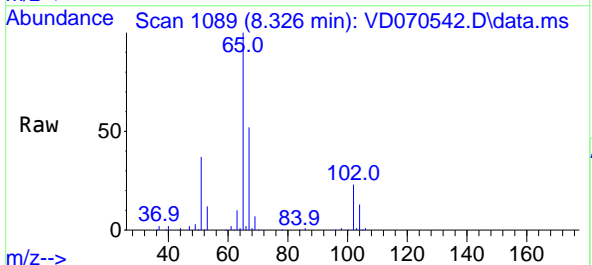


Tgt Ion: 96 Resp: 10463

Ion	Ratio	Lower	Upper
96	100		
61	114.6	0.0	277.4
98	70.2	0.0	130.0

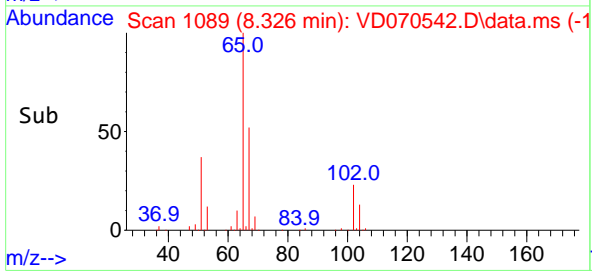
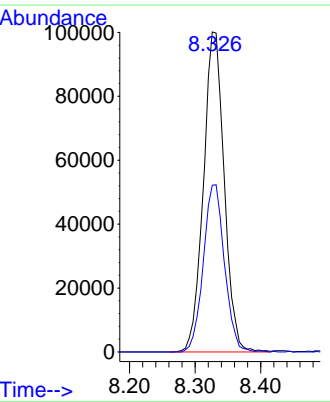


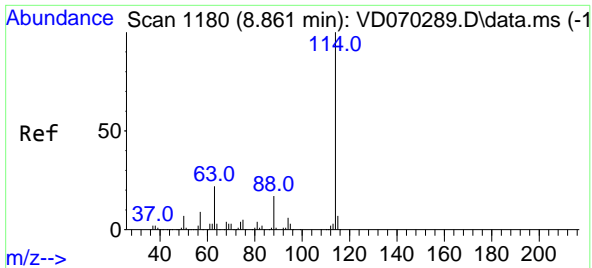
#33
 1,2-Dichloroethane-d4
 Concen: 64.063 ug/l
 RT: 8.326 min Scan# 1089
 Delta R.T. 0.000 min
 Lab File: VD070542.D
 Acq: 30 Sep 2021 15:48



Tgt Ion: 65 Resp: 220175

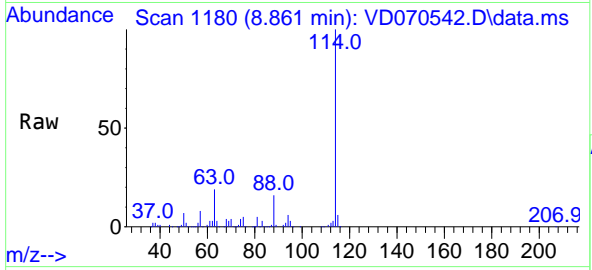
Ion	Ratio	Lower	Upper
65	100		
67	53.2	0.0	111.4





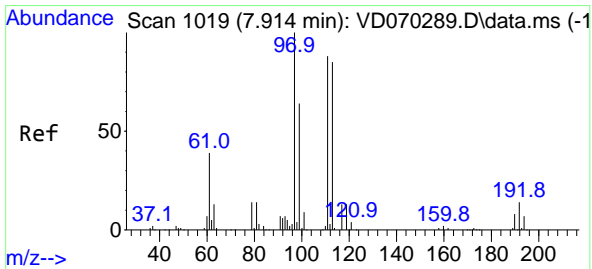
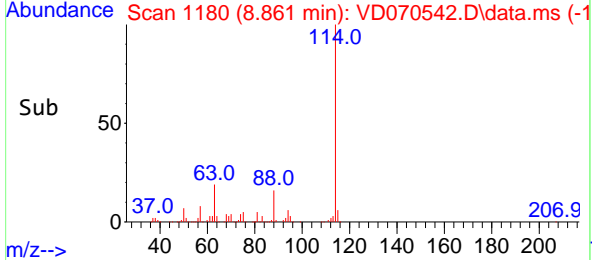
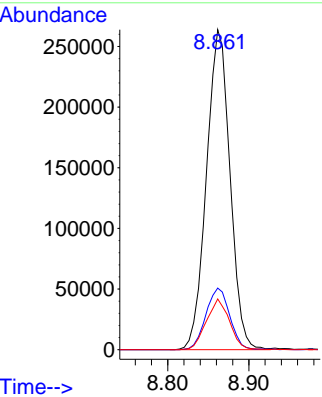
#34
 1,4-Difluorobenzene
 Concen: 50.000 ug/l
 RT: 8.861 min Scan# 1180
 Delta R.T. 0.000 min
 Lab File: VD070542.D
 Acq: 30 Sep 2021 15:48

Instrument :
 MSVOA_D
ClientSampled :
 S-841-R-SO-2-2.5-092821

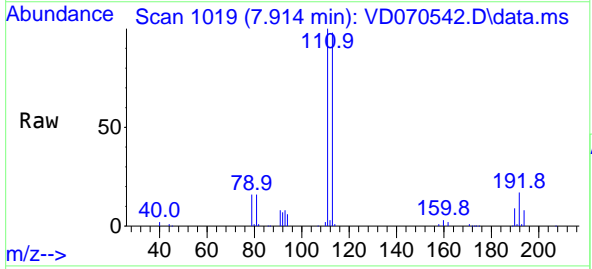


Tgt Ion:114 Resp: 531934

Ion	Ratio	Lower	Upper
114	100		
63	19.3	0.0	43.4
88	15.8	0.0	33.4

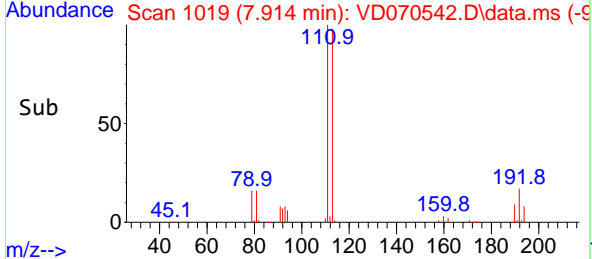
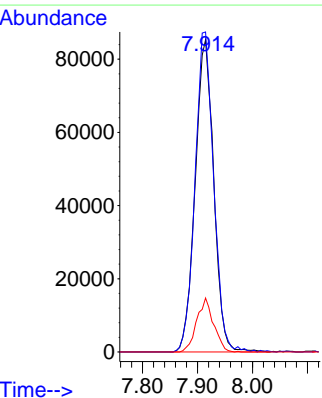


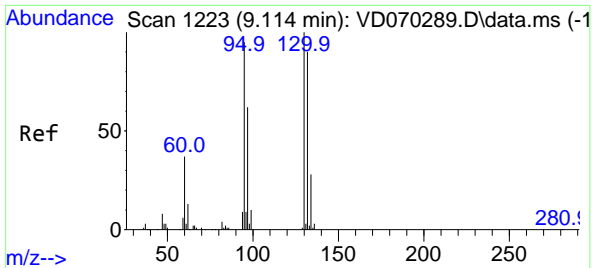
#35
 Dibromofluoromethane
 Concen: 52.906 ug/l
 RT: 7.914 min Scan# 1019
 Delta R.T. 0.000 min
 Lab File: VD070542.D
 Acq: 30 Sep 2021 15:48



Tgt Ion:113 Resp: 200321

Ion	Ratio	Lower	Upper
113	100		
111	102.4	81.4	122.2
192	15.6	13.0	19.6

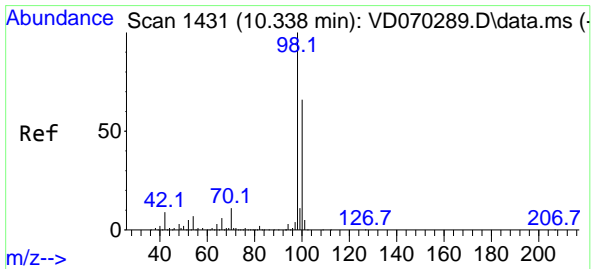
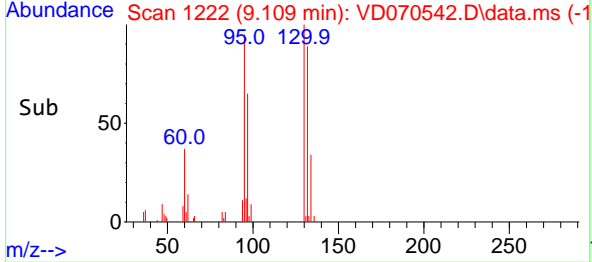
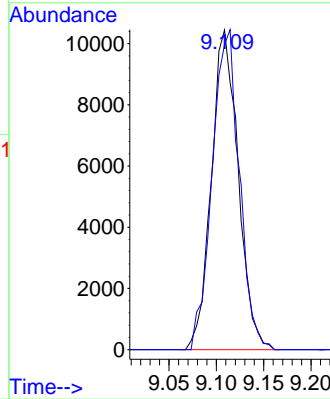
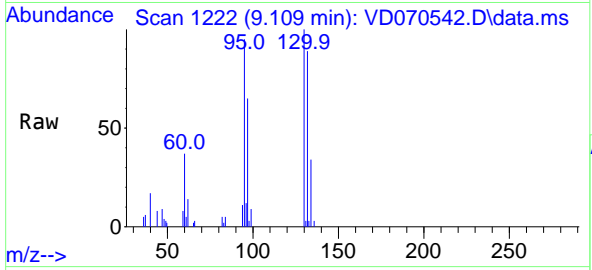




#44
 Trichloroethene
 Concen: 5.175 ug/l
 RT: 9.109 min Scan# 1222
 Delta R.T. -0.006 min
 Lab File: VD070542.D
 Acq: 30 Sep 2021 15:48

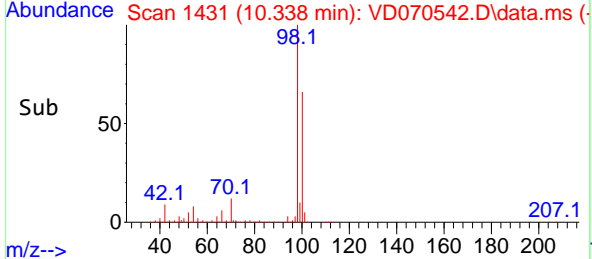
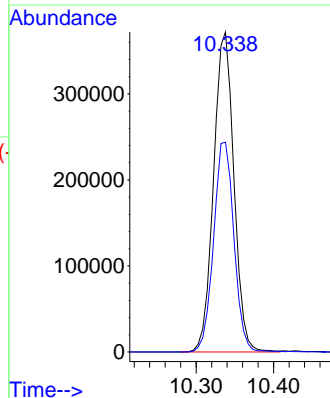
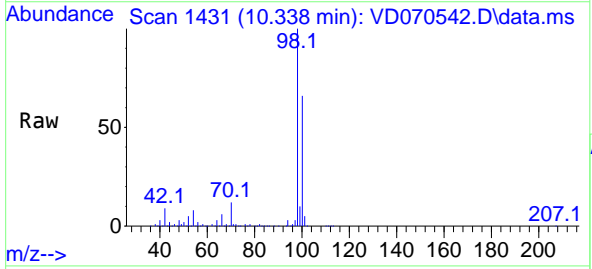
Instrument : MSVOA_D
 ClientSampled : S-841-R-SO-2-2.5-092821

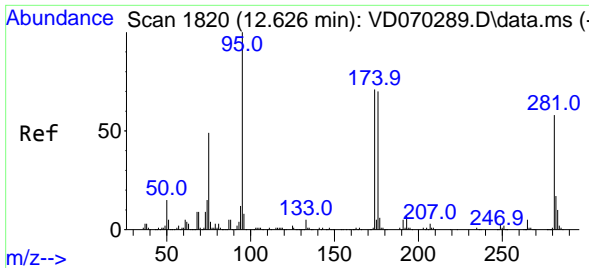
Tgt Ion:130 Resp: 20609
 Ion Ratio Lower Upper
 130 100
 95 95.4 0.0 190.0



#50
 Toluene-d8
 Concen: 49.255 ug/l
 RT: 10.338 min Scan# 1431
 Delta R.T. 0.000 min
 Lab File: VD070542.D
 Acq: 30 Sep 2021 15:48

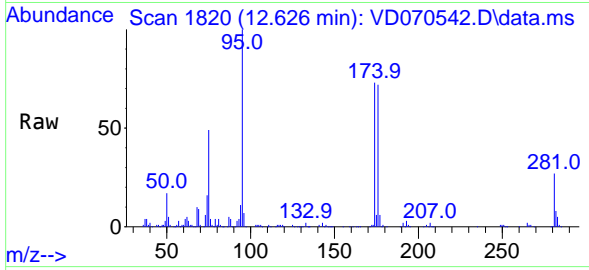
Tgt Ion: 98 Resp: 677133
 Ion Ratio Lower Upper
 98 100
 100 65.8 52.0 78.0



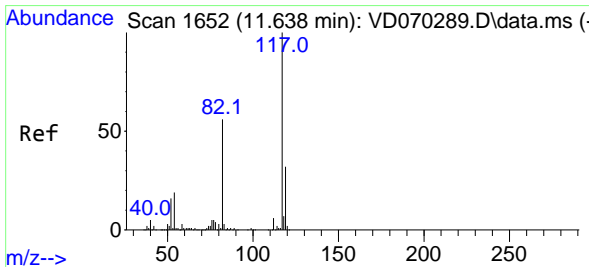
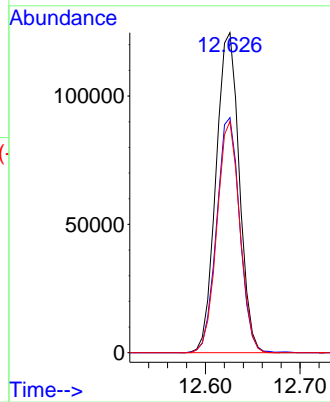
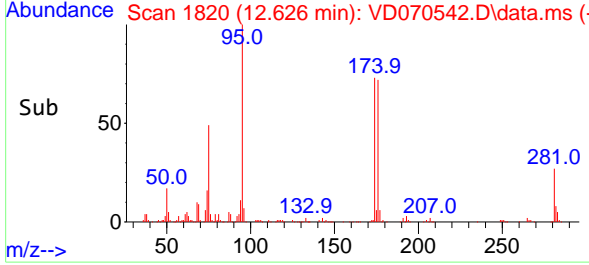


#62
 4-Bromofluorobenzene
 Concen: 44.388 ug/l
 RT: 12.626 min Scan# 1820
 Delta R.T. 0.000 min
 Lab File: VD070542.D
 Acq: 30 Sep 2021 15:48

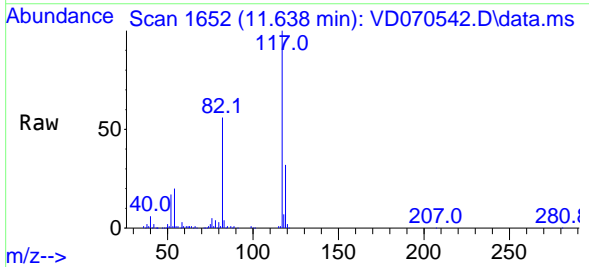
Instrument :
 MSVOA_D
ClientSampled :
 S-841-R-SO-2-2.5-092821



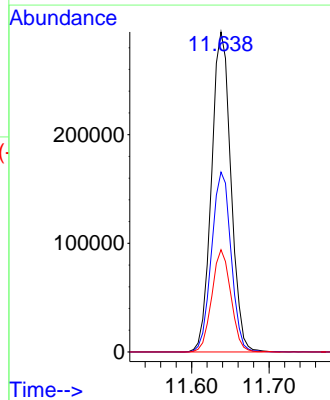
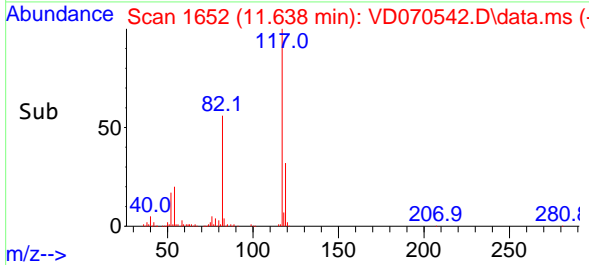
Tgt Ion: 95 Resp: 213262
 Ion Ratio Lower Upper
 95 100
 174 72.9 0.0 140.6
 176 70.8 0.0 137.4

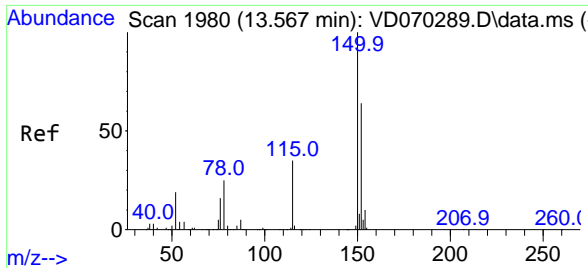


#63
 Chlorobenzene-d5
 Concen: 50.000 ug/l
 RT: 11.638 min Scan# 1652
 Delta R.T. 0.000 min
 Lab File: VD070542.D
 Acq: 30 Sep 2021 15:48



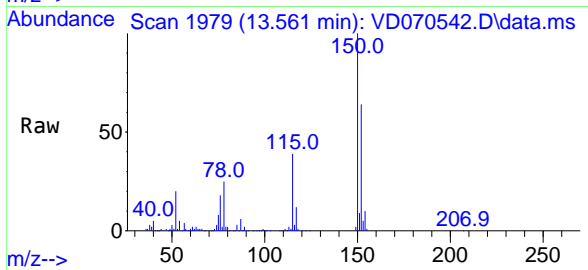
Tgt Ion: 117 Resp: 512696
 Ion Ratio Lower Upper
 117 100
 82 56.2 45.0 67.4
 119 32.0 25.2 37.8





#72
 1,4-Dichlorobenzene-d4
 Concen: 50.000 ug/l
 RT: 13.561 min Scan# 1979
 Delta R.T. -0.006 min
 Lab File: VD070542.D
 Acq: 30 Sep 2021 15:48

Instrument :
 MSVOA_D
ClientSampled :
 S-841-R-SO-2-2.5-092821



Tgt Ion:152 Resp: 213868

Ion	Ratio	Lower	Upper
152	100		
115	62.1	32.1	96.3
150	156.8	0.0	350.6

