

Data Path : Z:\VOASRV\HPCHEM1\MSVOA D\DATA\VD100419\  
 Data File : VD063885.D  
 Acq On : 04 Oct 2019 12:24  
 Operator : VA/SY  
 Sample : VD1004SBL01  
 Misc : 5.00µ/5.00mL/MSVOA D/SOIL  
 ALS Vial : 3 Sample Multiplier: 1

Instrument :  
 MSVOA\_D  
 ClientSampleId :  
 VD1004SBL01

Quant Time: Oct 05 04:00:11 2019  
 Quant Method : Z:\VOASRV\HPCHEM1\MSVOA\_D\METHOD\82D100219S.M  
 Quant Title : SW846 8260  
 QLast Update : Sat Oct 05 03:51:17 2019  
 Response via : Initial Calibration

Internal Standards	R.T.	QIon	Response	Conc	Units	Dev(Min)
1) Pentafluorobenzene	7.98	168	204991	50.00	µg/l	0.00
34) 1,4-Difluorobenzene	8.87	114	325116	50.00	µg/l	0.00
63) Chlorobenzene-d5	11.64	117	313472	50.00	µg/l	0.00
72) 1,4-Dichlorobenzene-d4	13.57	152	153922	50.00	µg/l	0.00

System Monitoring Compounds

33) 1,2-Dichloroethane-d4	8.33	65	101982	51.10	µg/l	0.00
Spiked Amount				50.000		
			Recovery	=	102.20%	
35) Dibromofluoromethane	7.91	113	98451	49.55	µg/l	0.00
Spiked Amount				50.000		
			Recovery	=	99.10%	
50) Toluene-d8	10.34	98	406821	50.45	µg/l	0.00
Spiked Amount				50.000		
			Recovery	=	100.90%	
62) 4-Bromofluorobenzene	12.63	95	127187	45.39	µg/l	0.00
Spiked Amount				50.000		
			Recovery	=	90.78%	

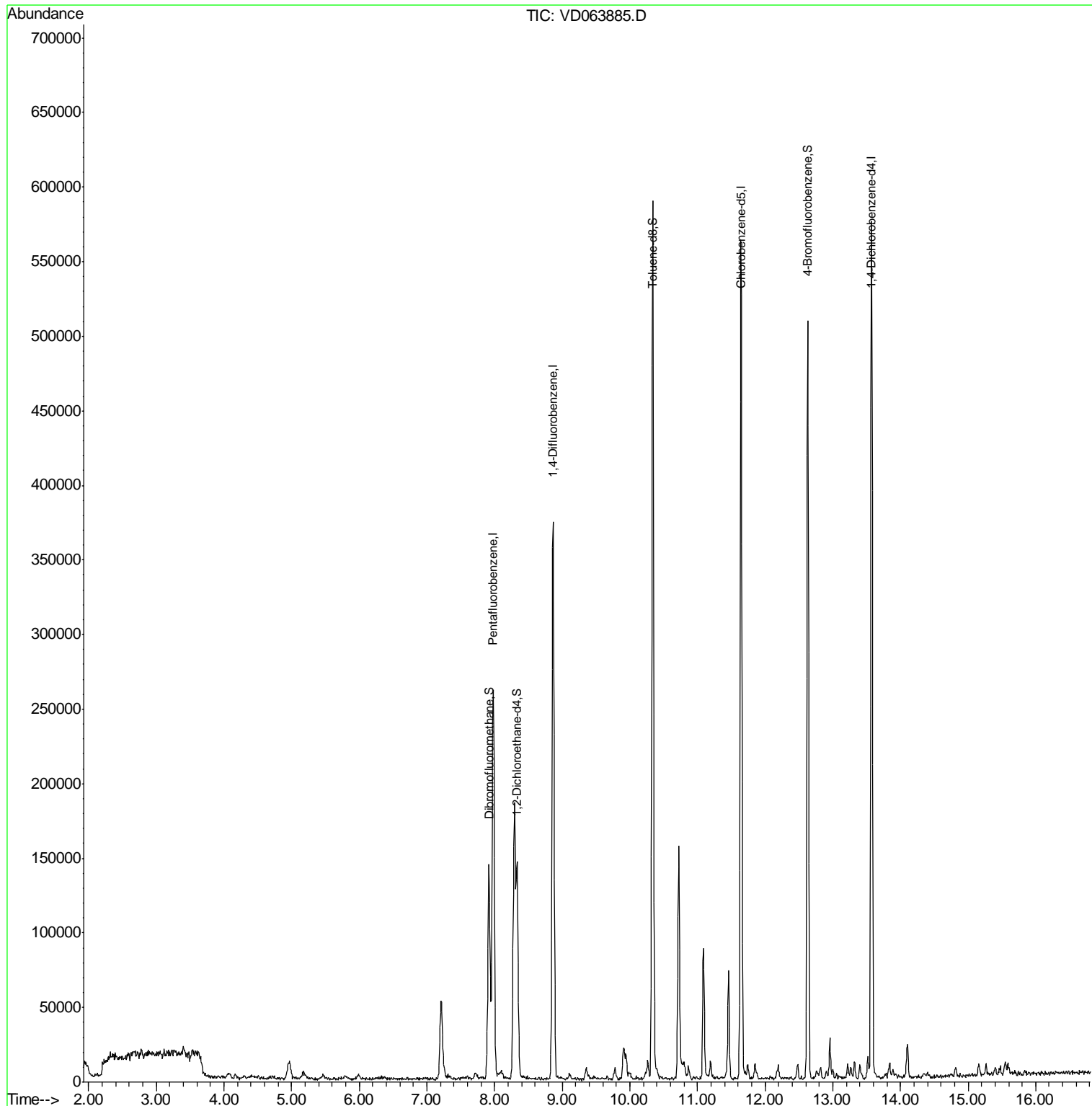
Target Compounds Qvalue

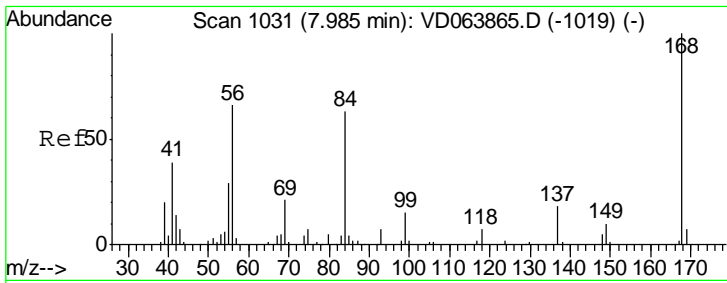
(#) = qualifier out of range (m) = manual integration (+) = signals summed

Data Path : Z:\VOASRV\HPCHEM1\MSVOA D\DATA\VD100419\  
 Data File : VD063885.D  
 Acq On : 04 Oct 2019 12:24  
 Operator : VA/SY  
 Sample : VD1004SBL01  
 Misc : 5.00µ/5.00mL/MSVOA D/SOIL  
 ALS Vial : 3 Sample Multiplier: 1

**Instrument :**  
 MSVOA\_D  
**ClientSampleId :**  
 VD1004SBL01

Quant Time: Oct 05 04:00:11 2019  
 Quant Method : Z:\VOASRV\HPCHEM1\MSVOA\_D\METHOD\82D100219S.M  
 Quant Title : SW846 8260  
 QLast Update : Sat Oct 05 03:51:17 2019  
 Response via : Initial Calibration

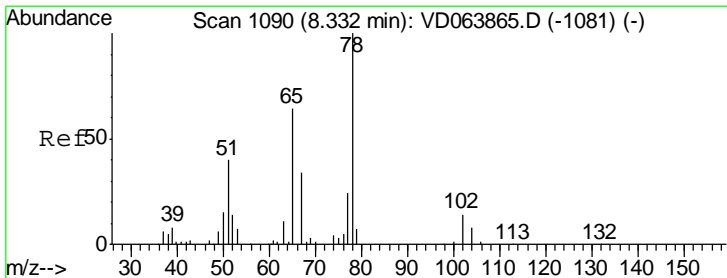
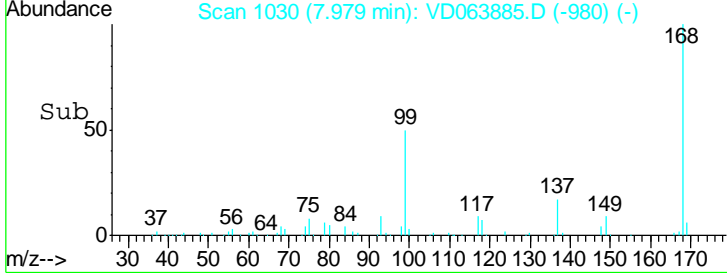
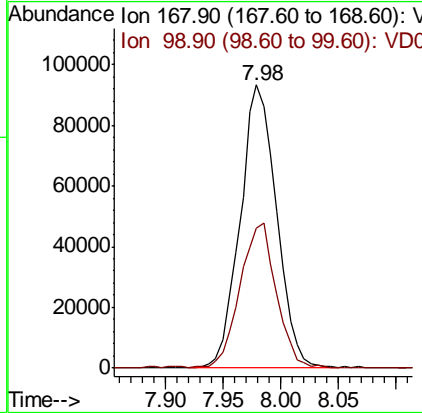
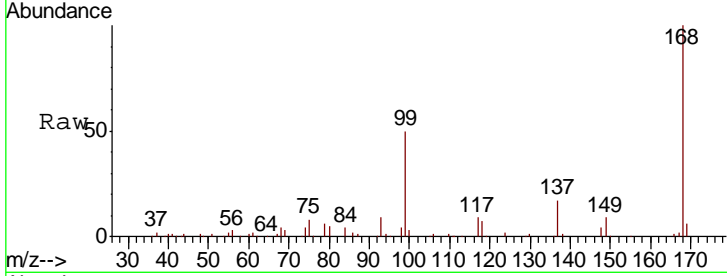




#1  
 Pentafluorobenzene  
 Concen: 50.000 ug/l  
 RT: 7.98 min Scan# 1030  
 Delta R.T. -0.01 min  
 Lab File: VD063885.D  
 Acq: 04 Oct 2019 12:24

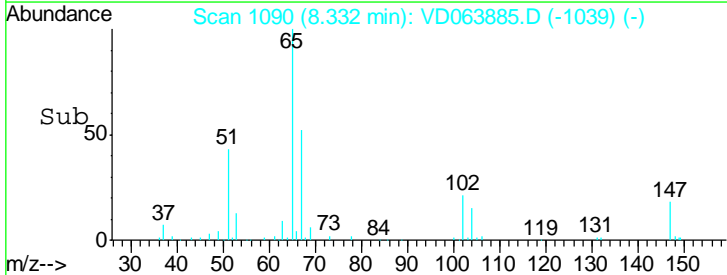
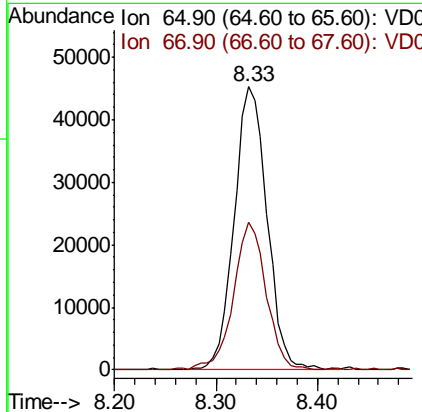
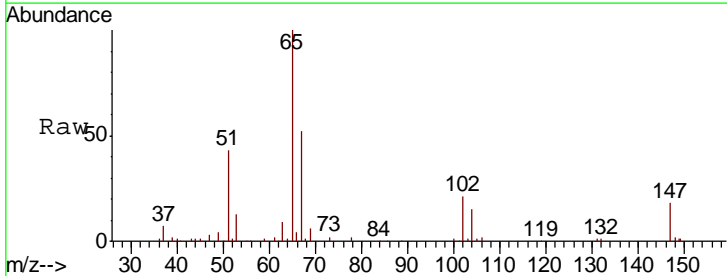
Instrument : MSVOA\_D  
 ClientSampleID : VD1004SBL01

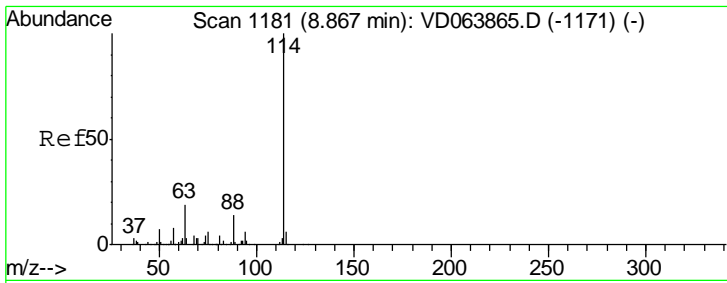
Tgt Ion	Resp	Lower	Upper
168	100		
99	49.5	43.0	64.4



#33  
 1,2-Dichloroethane-d4  
 Concen: 51.100 ug/l  
 RT: 8.33 min Scan# 1090  
 Delta R.T. -0.00 min  
 Lab File: VD063885.D  
 Acq: 04 Oct 2019 12:24

Tgt Ion	Resp	Lower	Upper
65	100		
67	52.0	0.0	106.4

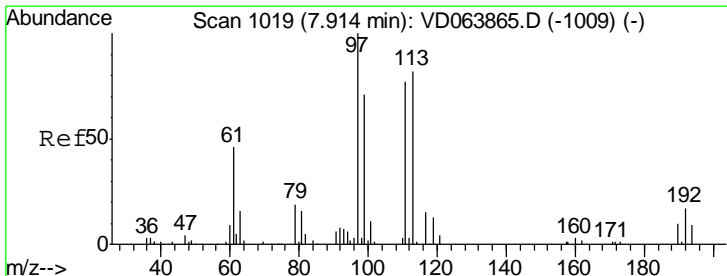
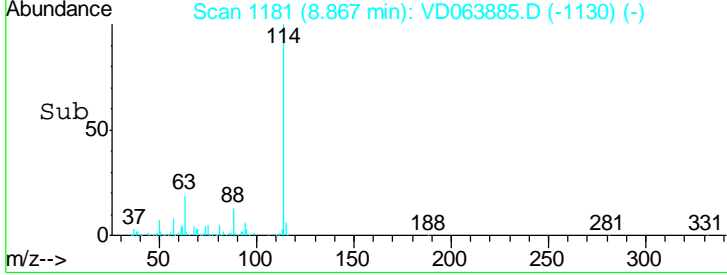
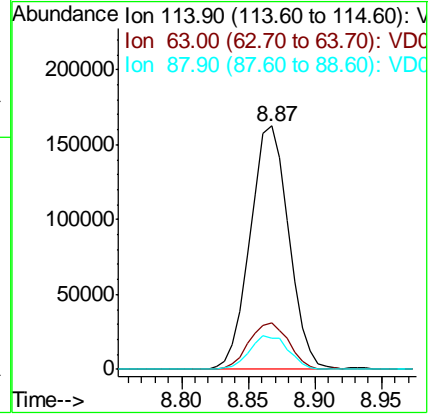
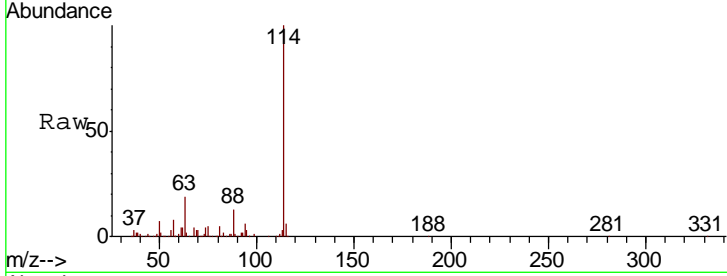




#34  
 1,4-Difluorobenzene  
 Concen: 50.000 ug/l  
 RT: 8.87 min Scan# 1181  
 Delta R.T. -0.00 min  
 Lab File: VD063885.D  
 Acq: 04 Oct 2019 12:24

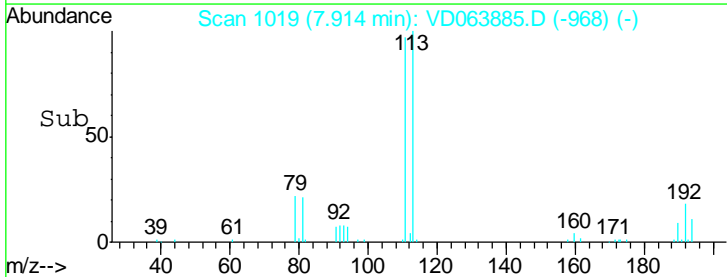
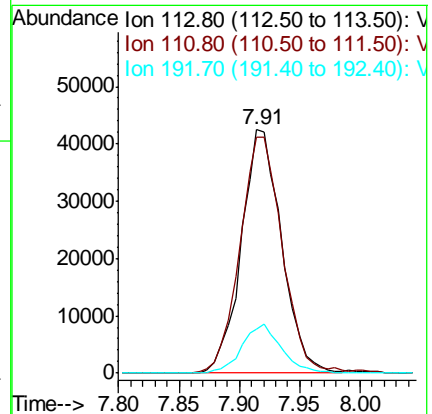
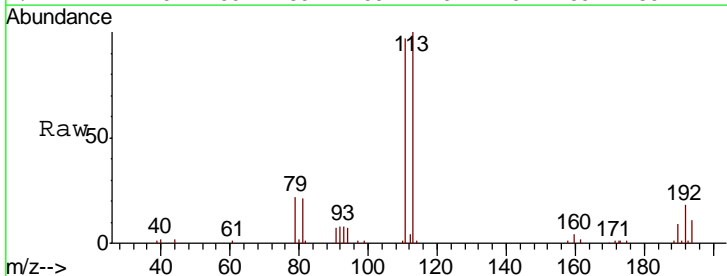
Instrument : MSVOA\_D  
 ClientSampled : VD1004SBL01

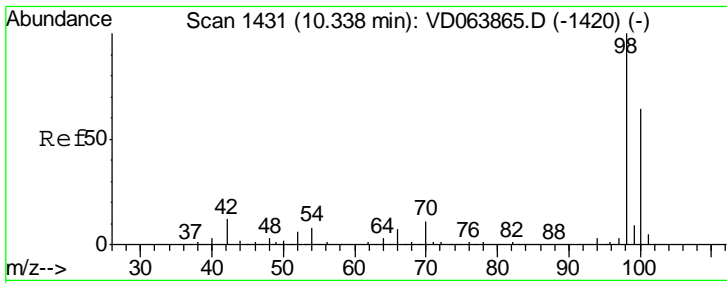
Tgt Ion	Resp	Lower	Upper
114	100		
63	18.9	0.0	38.4
88	13.1	0.0	27.4



#35  
 Dibromofluoromethane  
 Concen: 49.550 ug/l  
 RT: 7.91 min Scan# 1019  
 Delta R.T. -0.00 min  
 Lab File: VD063885.D  
 Acq: 04 Oct 2019 12:24

Tgt Ion	Resp	Lower	Upper
113	100		
111	101.8	82.6	123.8
192	19.6	17.1	25.7

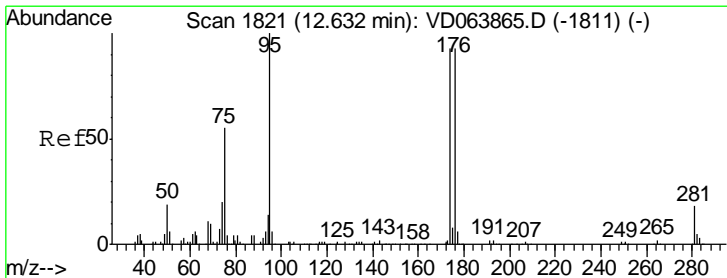
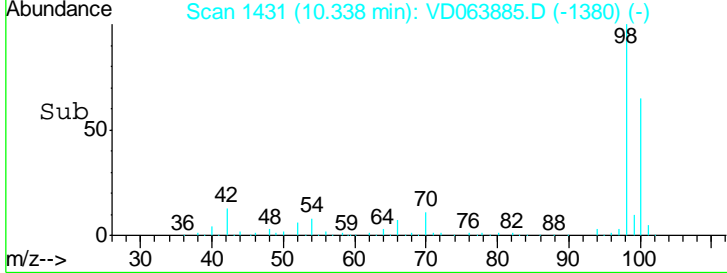
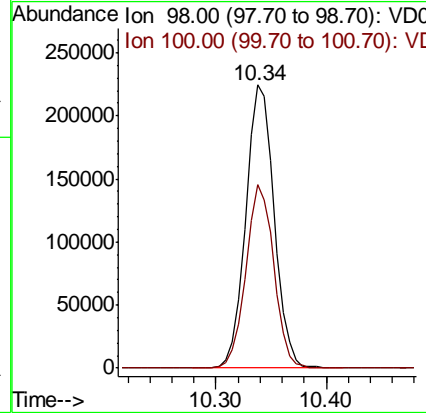
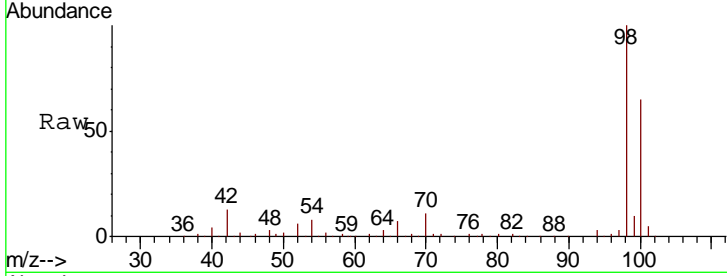




#50  
 Toluene-d8  
 Concen: 50.446 ug/l  
 RT: 10.34 min Scan# 1431  
 Delta R.T. -0.00 min  
 Lab File: VD063885.D  
 Acq: 04 Oct 2019 12:24

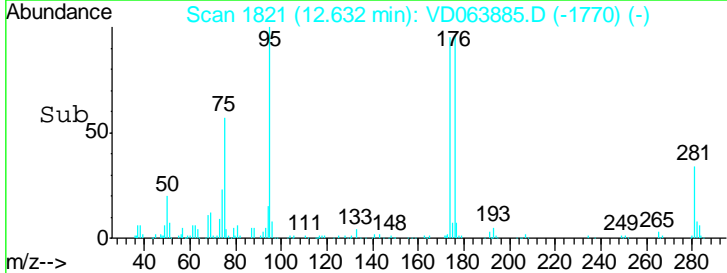
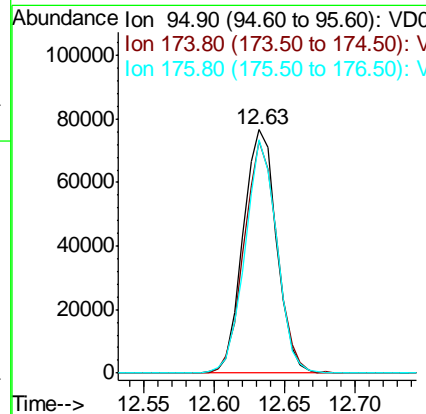
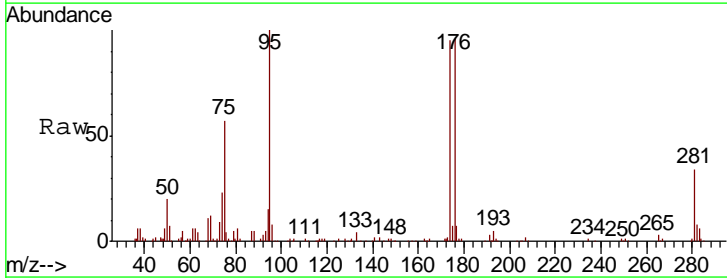
Instrument : MSVOA\_D  
 ClientSampleID : VD1004SBL01

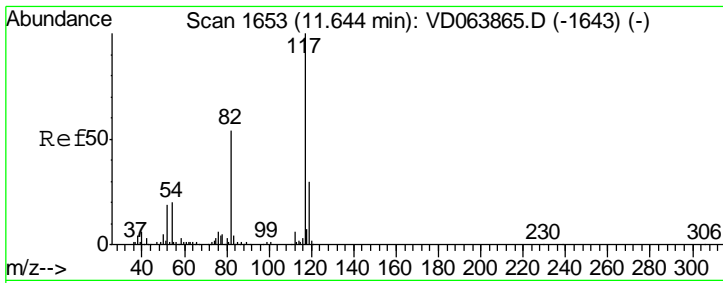
Tot Ion: 98 Resp: 406821  
 Ion Ratio Lower Upper  
 98 100  
 100 63.5 52.1 78.1



#62  
 4-Bromofluorobenzene  
 Concen: 45.385 ug/l  
 RT: 12.63 min Scan# 1821  
 Delta R.T. -0.00 min  
 Lab File: VD063885.D  
 Acq: 04 Oct 2019 12:24

Tgt Ion: 95 Resp: 127187  
 Ion Ratio Lower Upper  
 95 100  
 174 93.9 0.0 186.4  
 176 91.1 0.0 184.2

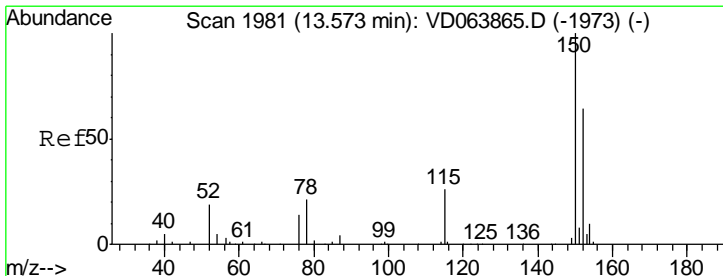
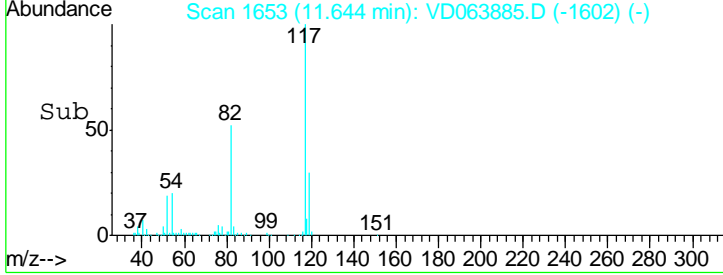
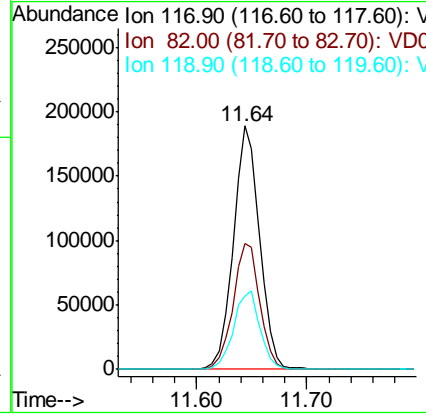
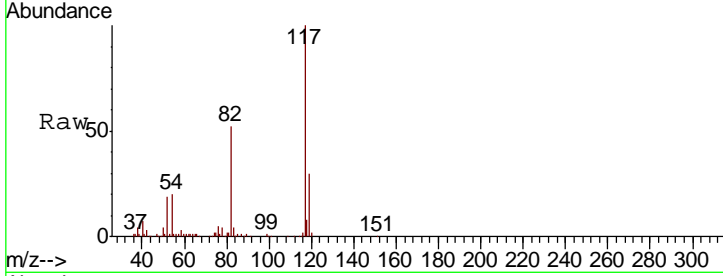




#63  
 Chlorobenzene-d5  
 Concen: 50.000 ug/l  
 RT: 11.64 min Scan# 1653  
 Delta R.T. -0.00 min  
 Lab File: VD063885.D  
 Acq: 04 Oct 2019 12:24

Instrument : MSVOA\_D  
 ClientSampleID : VD1004SBL01

Tgt Ion	Resp	Lower	Upper
117	313472		
82	51.8	42.8	64.2
119	30.3	24.4	36.6



#72  
 1,4-Dichlorobenzene-d4  
 Concen: 50.000 ug/l  
 RT: 13.57 min Scan# 1981  
 Delta R.T. -0.00 min  
 Lab File: VD063885.D  
 Acq: 04 Oct 2019 12:24

Tgt Ion	Resp	Lower	Upper
152	153922		
115	53.5	25.9	77.7
150	152.9	0.0	344.2

