

Data Path : Z:\voasrv\HPCHEM1\MSVOA\_D\Data\VD100421\  
 Data File : VD070546.D  
 Acq On : 04 Oct 2021 12:48  
 Operator : VA/SY  
 Sample : VD1004SBL01  
 Misc : 5.00G/5.00ml/MSVOA\_D/SOIL  
 ALS Vial : 3 Sample Multiplier: 1

Instrument :  
 MSVOA\_D  
 ClientSampleId :  
 VD1004SBL01

Integration Parameters: RTEINT.P  
 Integrator: RTE  
 Smoothing : ON Filtering: 5  
 Sampling : 1 Min Area: 3 % of largest Peak  
 Start Thrs: 0.2 Max Peaks: 100  
 Stop Thrs : 0 Peak Location: TOP

If leading or trailing edge < 100 prefer < Baseline drop else tangent >  
 Peak separation: 5

Method : Z:\voasrv\HPCHEM1\MSVOA\_D\Method\82D090821S.M  
 Title : SW846 8260

Signal : TIC: VD070546.D\data.ms

peak #	R.T. min	first scan	max scan	last scan	PK TY	peak height	corr. area	corr. % max.	% of total
1	2.638	108	122	130	rBV9	10915	32403	1.28%	0.255%
2	7.914	1009	1019	1024	rBV	346674	855819	33.78%	6.735%
3	7.973	1024	1029	1040	rVB	571409	1282012	50.61%	10.088%
4	8.326	1080	1089	1099	rBV	315054	716632	28.29%	5.639%
5	8.861	1170	1180	1189	rBV	916291	1836596	72.50%	14.452%
6	10.338	1421	1431	1438	rBV	1401952	2533361	100.00%	19.935%
7	11.638	1642	1652	1663	rBV	1229563	2095424	82.71%	16.489%
8	11.738	1663	1669	1678	rVB4	13975	25611	1.01%	0.202%
9	11.849	1681	1688	1695	rVV2	15434	28057	1.11%	0.221%
10	12.626	1813	1820	1831	rVB	818752	1403192	55.39%	11.042%
11	13.561	1972	1979	1988	rVB	1107054	1821233	71.89%	14.332%
12	14.085	2063	2068	2076	rVB4	27181	50562	2.00%	0.398%
13	15.526	2308	2313	2319	rBV2	15702	26954	1.06%	0.212%

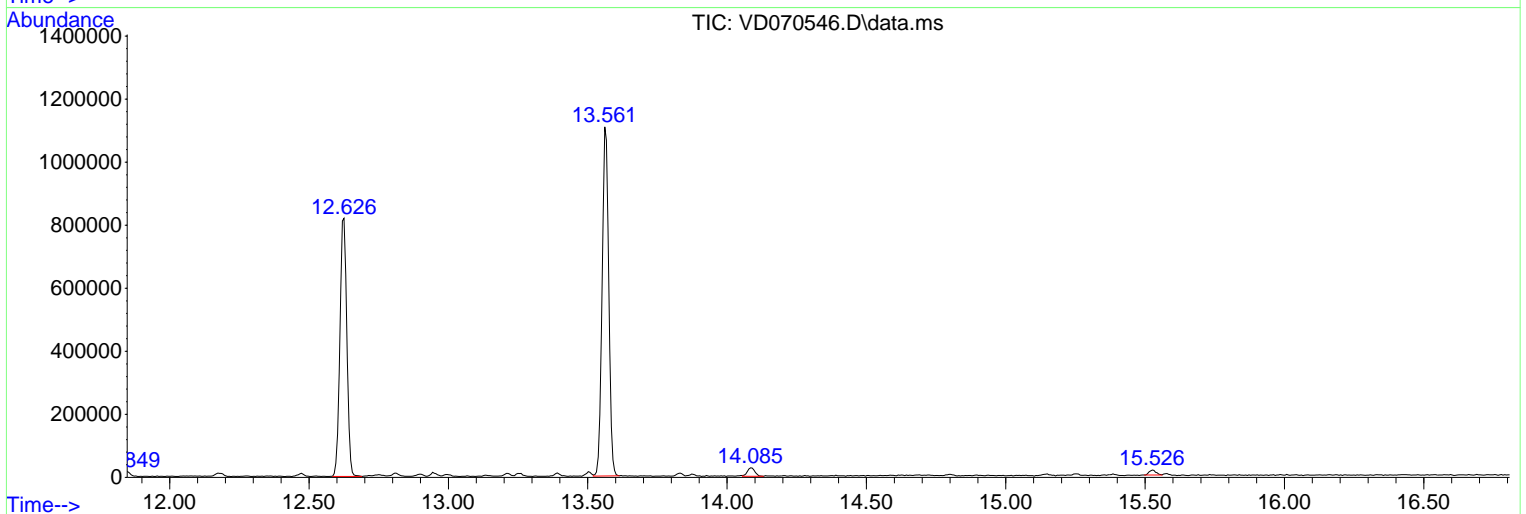
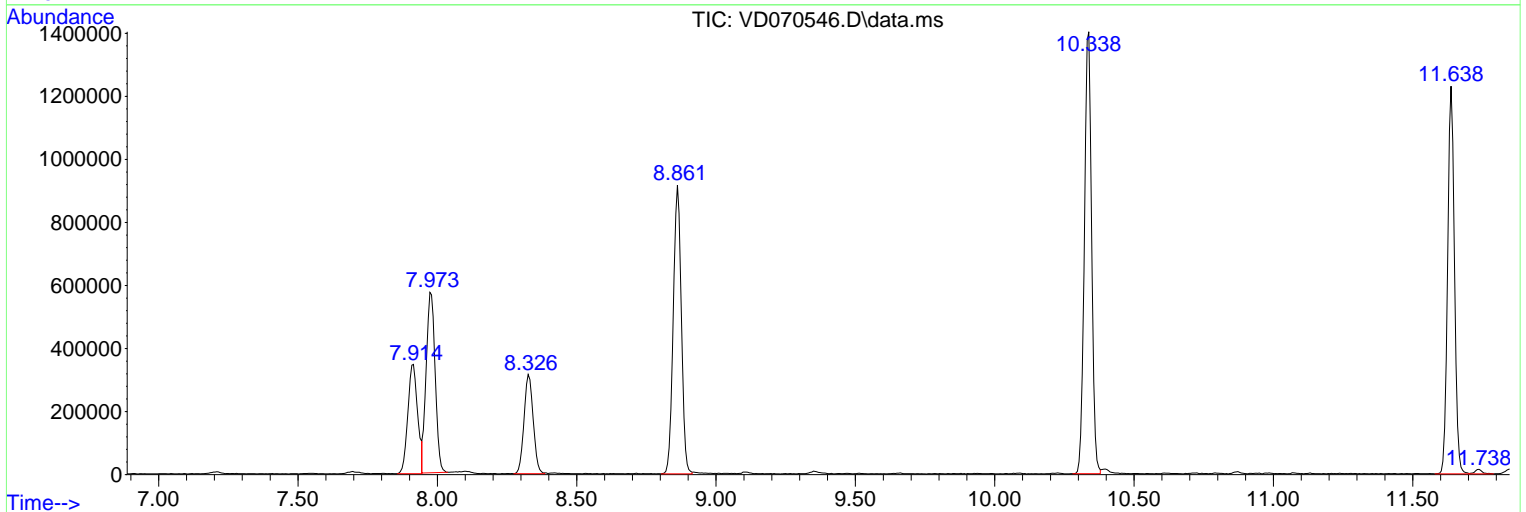
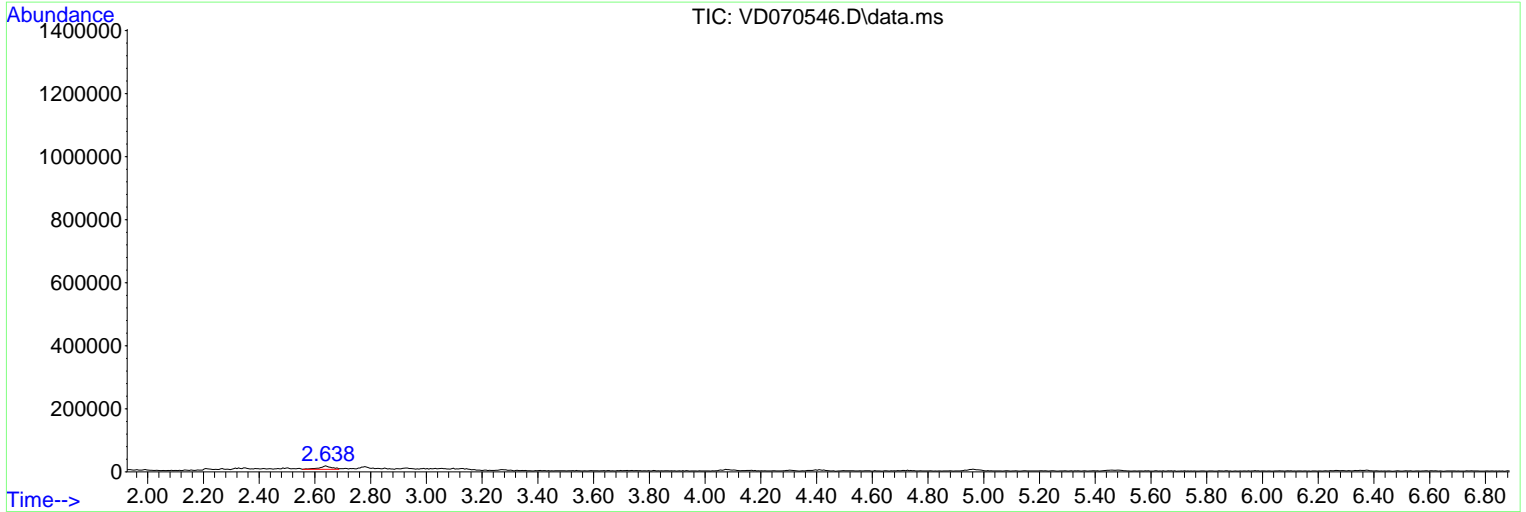
Sum of corrected areas: 12707856

Data Path : Z:\voasrv\HPCHEM1\MSVOA\_D\Data\VD100421\  
 Data File : VD070546.D  
 Acq On : 04 Oct 2021 12:48  
 Operator : VA/SY  
 Sample : VD1004SBL01  
 Misc : 5.00G/5.00ml/MSVOA\_D/SOIL  
 ALS Vial : 3 Sample Multiplier: 1

Instrument :  
 MSVOA\_D  
 ClientSampleId :  
 VD1004SBL01

Quant Method : Z:\voasrv\HPCHEM1\MSVOA\_D\Method\82D090821S.M  
 Quant Title : SW846 8260

TIC Library : C:\Database\NIST20.L  
 TIC Integration Parameters: LSCINT.P



Library Search Compound Report

Data Path : Z:\voasrv\HPCHEM1\MSVOA\_D\Data\VD100421\  
Data File : VD070546.D  
Acq On : 04 Oct 2021 12:48  
Operator : VA/SY  
Sample : VD1004SBL01  
Misc : 5.00G/5.00ml/MSVOA\_D/SOIL  
ALS Vial : 3 Sample Multiplier: 1

Instrument :  
MSVOA\_D  
ClientSampleId :  
VD1004SBL01

Quant Method : Z:\voasrv\HPCHEM1\MSVOA\_D\Method\82D090821S.M  
Quant Title : SW846 8260

TIC Library : C:\Database\NIST20.L  
TIC Integration Parameters: LSCINT.P

No Library Search Compounds Detected

\*\*\*\*\*

Data Path : Z:\voasrv\HPCHEM1\MSVOA\_D\Data\VD100421\  
Data File : VD070546.D  
Acq On : 04 Oct 2021 12:48  
Operator : VA/SY  
Sample : VD1004SBL01  
Misc : 5.00G/5.00ml/MSVOA\_D/SOIL  
ALS Vial : 3 Sample Multiplier: 1

Instrument :  
MSVOA\_D  
ClientSampleId :  
VD1004SBL01

Quant Method : Z:\voasrv\HPCHEM1\MSVOA\_D\Method\82D090821S.M  
Quant Title : SW846 8260

TIC Library : C:\Database\NIST20.L  
TIC Integration Parameters: LSCINT.P

TIC Top Hit name	RT	EstConc	Units	Response	--Internal Standard--			
					#	RT	Resp	Conc

---