

Data Path : Z:\VOASRV\HPCHEM1\MSVOA D\DATA\VD100620\
 Data File : VD067105.D
 Acq On : 06 Oct 2020 14:00
 Operator : VA/SY
 Sample : L4272-18
 Misc : 7.04G/5.00ml/MSVOA D/SOIL
 ALS Vial : 11 Sample Multiplier: 1

Instrument :
 MSVOA_D
 ClientSampleId :
 GIS-3-(6)

Integration Parameters: RTEINT.P

Integrator: RTE
 Smoothing : ON Filtering: 5
 Sampling : 1 Min Area: 3 % of largest Peak
 Start Thrs: 0.2 Max Peaks: 100
 Stop Thrs : 0 Peak Location: TOP

If leading or trailing edge < 100 prefer < Baseline drop else tangent >
 Peak separation: 5

Method : Z:\VOASRV\HPCHEM1\MSVOA_D\METHOD\82D100120S.M
 Title : SW846 8260

Signal : TIC

peak #	R.T. min	first scan	max scan	last scan	PK TY	peak height	corr. area	corr. % max.	% of total
1	4.973	503	519	529	rBV2	58799	186837	8.36%	1.593%
2	7.914	1008	1019	1024	rBV	325191	766179	34.30%	6.532%
3	7.979	1024	1030	1041	rVB	540813	1244713	55.72%	10.611%
4	8.332	1080	1090	1103	rBV	263550	595623	26.66%	5.078%
5	8.861	1170	1180	1195	rBV	785019	1611584	72.14%	13.739%
6	10.338	1422	1431	1450	rBV	1224815	2234064	100.00%	19.046%
7	11.644	1644	1653	1662	rBV	1101898	1893516	84.76%	16.142%
8	12.638	1814	1822	1830	rBV	826071	1397483	62.55%	11.914%
9	13.579	1975	1982	1992	rVB	1091499	1800128	80.58%	15.346%

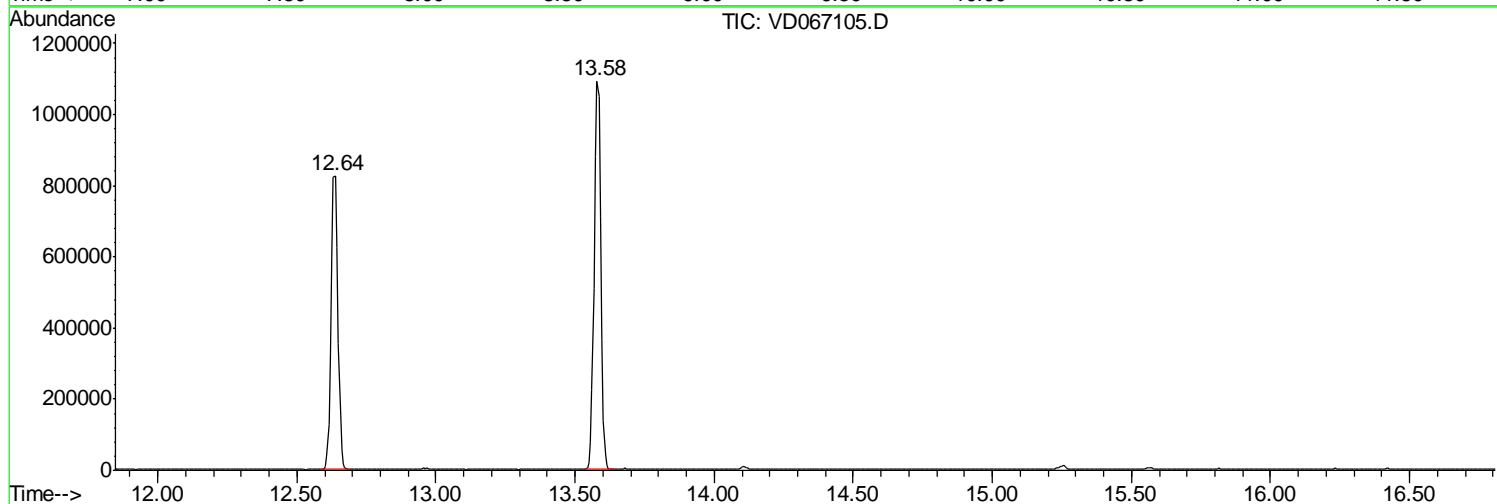
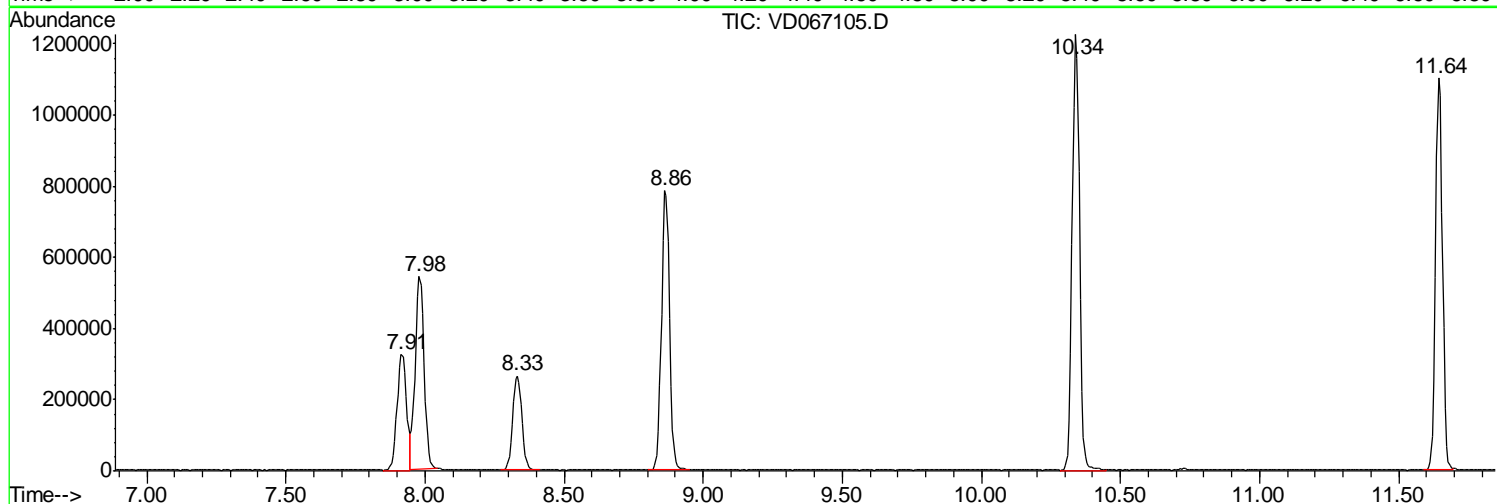
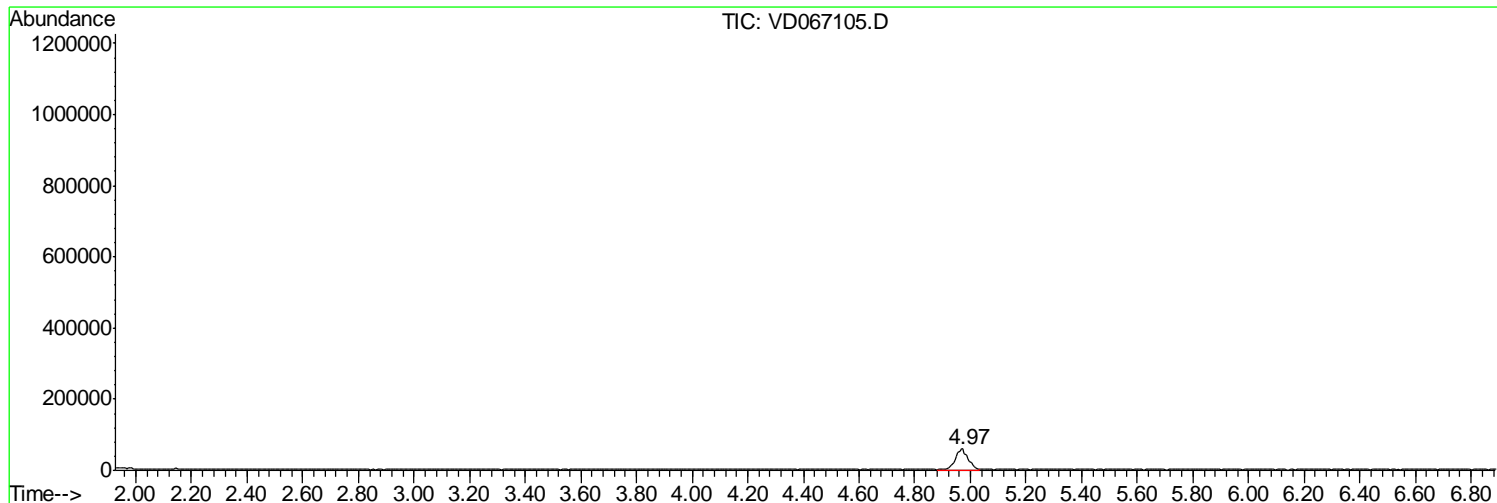
Sum of corrected areas: 11730127

Data Path : Z:\VOASRV\HPCHEM1\MSVOA D\DATA\VD100620\
 Data File : VD067105.D
 Acq On : 06 Oct 2020 14:00
 Operator : VA/SY
 Sample : L4272-18
 Misc : 7.04G/5.00ml/MSVOA D/SOIL
 ALS Vial : 11 Sample Multiplier: 1

Instrument :
 MSVOA_D
ClientSampled :
 GIS-3-(6)

Quant Method : Z:\VOASRV\HPCHEM1\MSVOA_D\METHOD\82D100120S.M
 Quant Title : SW846 8260

TIC Library : C:\DATABASE\NIST11.L
 TIC Integration Parameters: LSCINT.P



Data Path : Z:\VOASRV\HPCHEM1\MSVOA_D\DATA\VD100620\
Data File : VD067105.D
Acq On : 06 Oct 2020 14:00
Operator : VA/SY
Sample : L4272-18
Misc : 7.04G/5.00ml/MSVOA_D/SOIL
ALS Vial : 11 Sample Multiplier: 1

Instrument :
MSVOA_D
ClientSampleId :
GIS-3-(6)

Quant Method : Z:\VOASRV\HPCHEM1\MSVOA_D\METHOD\82D100120S.M
Quant Title : SW846 8260

TIC Library : C:\DATABASE\NIST11.L
TIC Integration Parameters: LSCINT.P

No Library Search Compounds Detected

Data Path : Z:\VOASRV\HPCHEM1\MSVOA_D\DATA\VD100620\
Data File : VD067105.D
Acq On : 06 Oct 2020 14:00
Operator : VA/SY
Sample : L4272-18
Misc : 7.04G/5.00ml/MSVOA_D/SOIL
ALS Vial : 11 Sample Multiplier: 1

Instrument :
MSVOA_D
ClientSampleId :
GIS-3-(6)

Quant Method : Z:\VOASRV\HPCHEM1\MSVOA_D\METHOD\82D100120S.M
Quant Title : SW846 8260

TIC Library : C:\DATABASE\NIST11.L
TIC Integration Parameters: LSCINT.P

TIC Top Hit name	RT	EstConc	Units	Response	--Internal Standard--			
					#	RT	Resp	Conc
