

Data Path : Z:\voasrv\HPCHEM1\MSVOA_D\Data\VD100622\
 Data File : VD074471.D
 Acq On : 06 Oct 2022 17:32
 Operator : VA/SY
 Sample : N5014-08
 Misc : 5.07G/5.00ml/MSVOA_D/SOIL
 ALS Vial : 15 Sample Multiplier: 1

Instrument :
 MSVOA_D
 ClientSampleId :
 SB-09-0-2.0

Integration Parameters: RTEINT.P

Integrator: RTE
 Smoothing : ON Filtering: 5
 Sampling : 1 Min Area: 3 % of largest Peak
 Start Thrs: 0.2 Max Peaks: 100
 Stop Thrs : 0 Peak Location: TOP

If leading or trailing edge < 100 prefer < Baseline drop else tangent >
 Peak separation: 5

Method : Z:\voasrv\HPCHEM1\MSVOA_D\Method\82D100522S.M
 Title : SW846 8260

Signal : TIC: VD074471.D\data.ms

peak #	R.T. min	first scan	max scan	last scan	PK TY	peak height	corr. area	corr. % max.	% of total
1	1.728	18	24	33	rBV	315349	499206	87.34%	13.025%
2	4.804	537	547	558	rVB3	12565	40098	7.02%	1.046%
3	7.069	922	932	944	rVB	8859	24706	4.32%	0.645%
4	7.804	1046	1057	1063	rBV2	90460	221669	38.78%	5.784%
5	7.875	1063	1069	1078	rVB	167023	370663	64.85%	9.671%
6	8.234	1116	1130	1139	rBV	62713	148069	25.91%	3.863%
7	8.775	1214	1222	1234	rBV	250389	503282	88.06%	13.131%
8	10.269	1465	1476	1485	rBV	305500	539959	94.47%	14.088%
9	10.657	1537	1542	1550	rVB3	4663	8925	1.56%	0.233%
10	11.581	1691	1699	1713	rVB	331835	571547	100.00%	14.913%
11	12.569	1860	1867	1875	rVB	248515	393509	68.85%	10.267%
12	13.510	2020	2027	2035	rBV	320523	511007	89.41%	13.333%

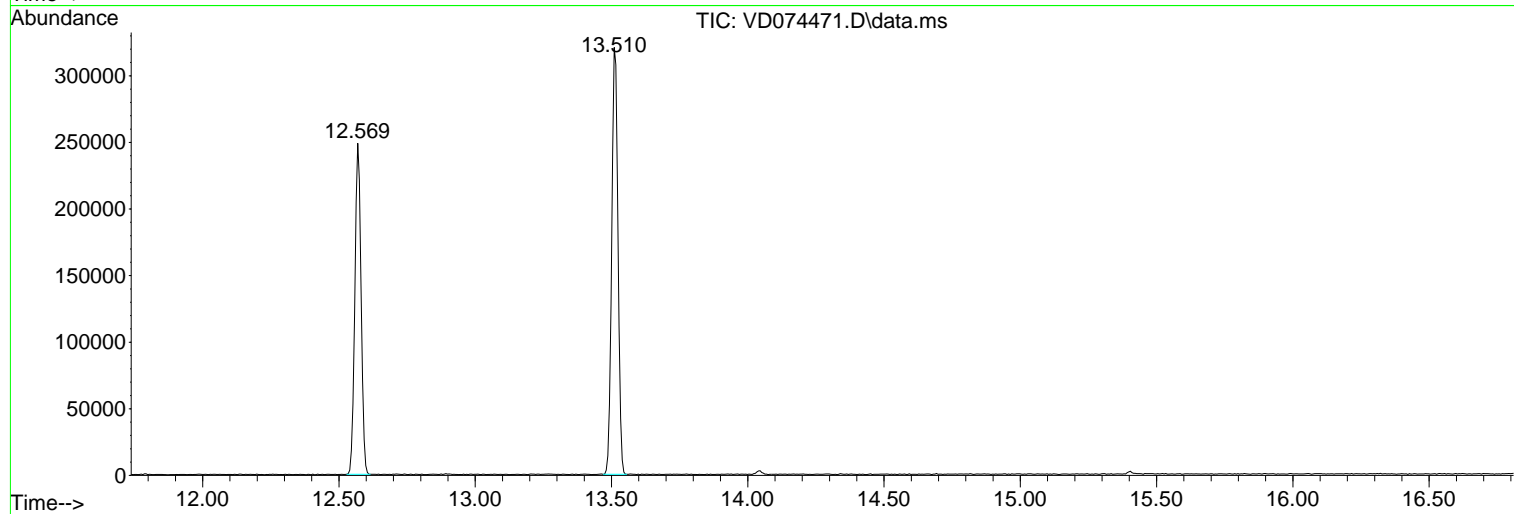
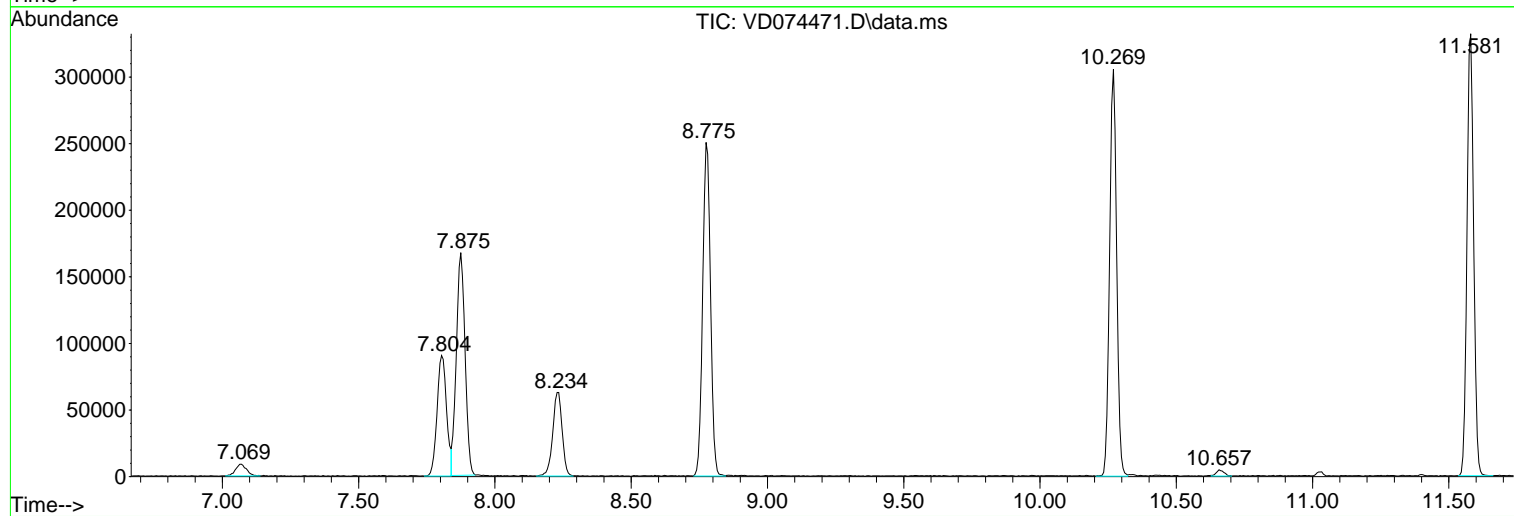
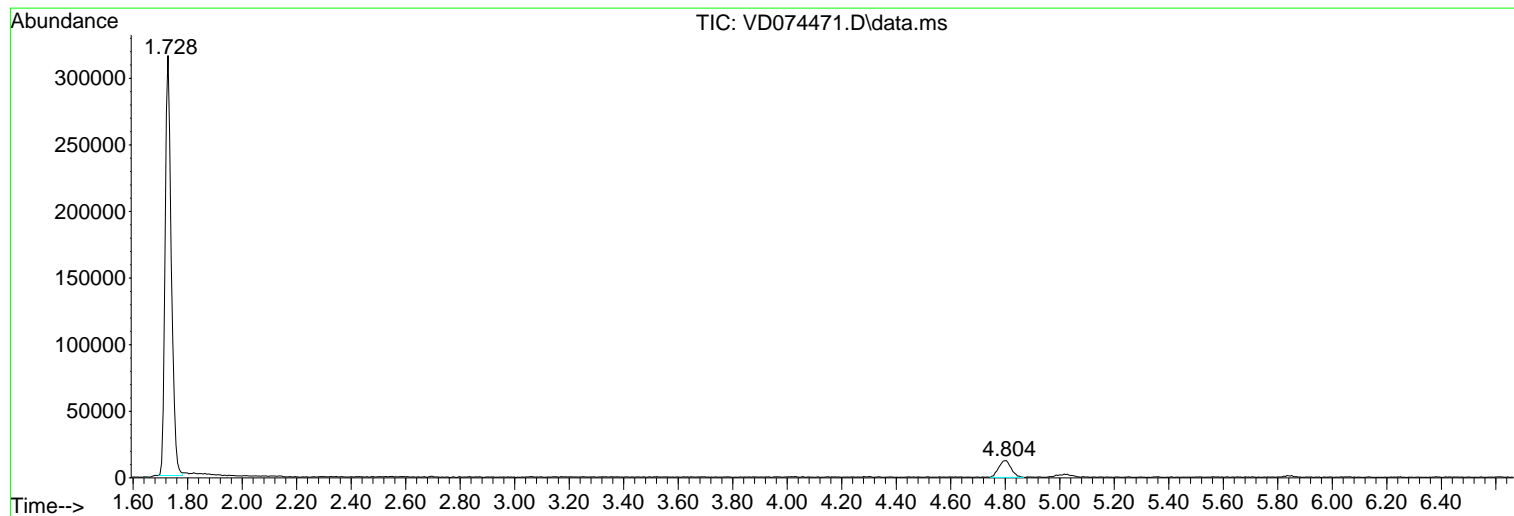
Sum of corrected areas: 3832640

Data Path : Z:\voasrv\HPCHEM1\MSVOA_D\Data\VD100622\
Data File : VD074471.D
Acq On : 06 Oct 2022 17:32
Operator : VA/SY
Sample : N5014-08
Misc : 5.07G/5.00ml/MSVOA_D/SOIL
ALS Vial : 15 Sample Multiplier: 1

Instrument :
MSVOA_D
ClientSampleId :
SB-09-0-2.0

Quant Method : Z:\voasrv\HPCHEM1\MSVOA_D\Method\82D100522S.M
Quant Title : SW846 8260

TIC Library : C:\Database\NIST20.L
TIC Integration Parameters: LSCINT.P



Library Search Compound Report

Data Path : Z:\voasrv\HPCHEM1\MSVOA_D\Data\VD100622\
Data File : VD074471.D
Acq On : 06 Oct 2022 17:32
Operator : VA/SY
Sample : N5014-08
Misc : 5.07G/5.00ml/MSVOA_D/SOIL
ALS Vial : 15 Sample Multiplier: 1

Instrument :
MSVOA_D
ClientSampleId :
SB-09-0-2.0

Quant Method : Z:\voasrv\HPCHEM1\MSVOA_D\Method\82D100522S.M
Quant Title : SW846 8260

TIC Library : C:\Database\NIST20.L
TIC Integration Parameters: LSCINT.P

No Library Search Compounds Detected

Data Path : Z:\voasrv\HPCHEM1\MSVOA_D\Data\VD100622\
Data File : VD074471.D
Acq On : 06 Oct 2022 17:32
Operator : VA/SY
Sample : N5014-08
Misc : 5.07G/5.00ml/MSVOA_D/SOIL
ALS Vial : 15 Sample Multiplier: 1

Instrument :
MSVOA_D
ClientSampleId :
SB-09-0-2.0

Quant Method : Z:\voasrv\HPCHEM1\MSVOA_D\Method\82D100522S.M
Quant Title : SW846 8260

TIC Library : C:\Database\NIST20.L
TIC Integration Parameters: LSCINT.P

TIC Top Hit name	RT	EstConc	Units	Response	--Internal Standard--			
					#	RT	Resp	Conc
