

Data Path : Z:\voasrv\HPCHEM1\MSVOA\_D\Data\VD100721\  
 Data File : VD070625.D  
 Acq On : 07 Oct 2021 19:06  
 Operator : VA/SY  
 Sample : M4117-08  
 Misc : 4.48G/5.00ml/MSVOA\_D/SOIL  
 ALS Vial : 23 Sample Multiplier: 1

Instrument :  
 MSVOA\_D  
 ClientSampleId :  
 SB-3(3.0-3.5)

Quant Time: Oct 08 04:54:54 2021  
 Quant Method : Z:\voasrv\HPCHEM1\MSVOA\_D\Method\82D100521S.M  
 Quant Title : SW846 8260  
 QLast Update : Wed Oct 06 09:10:31 2021  
 Response via : Initial Calibration

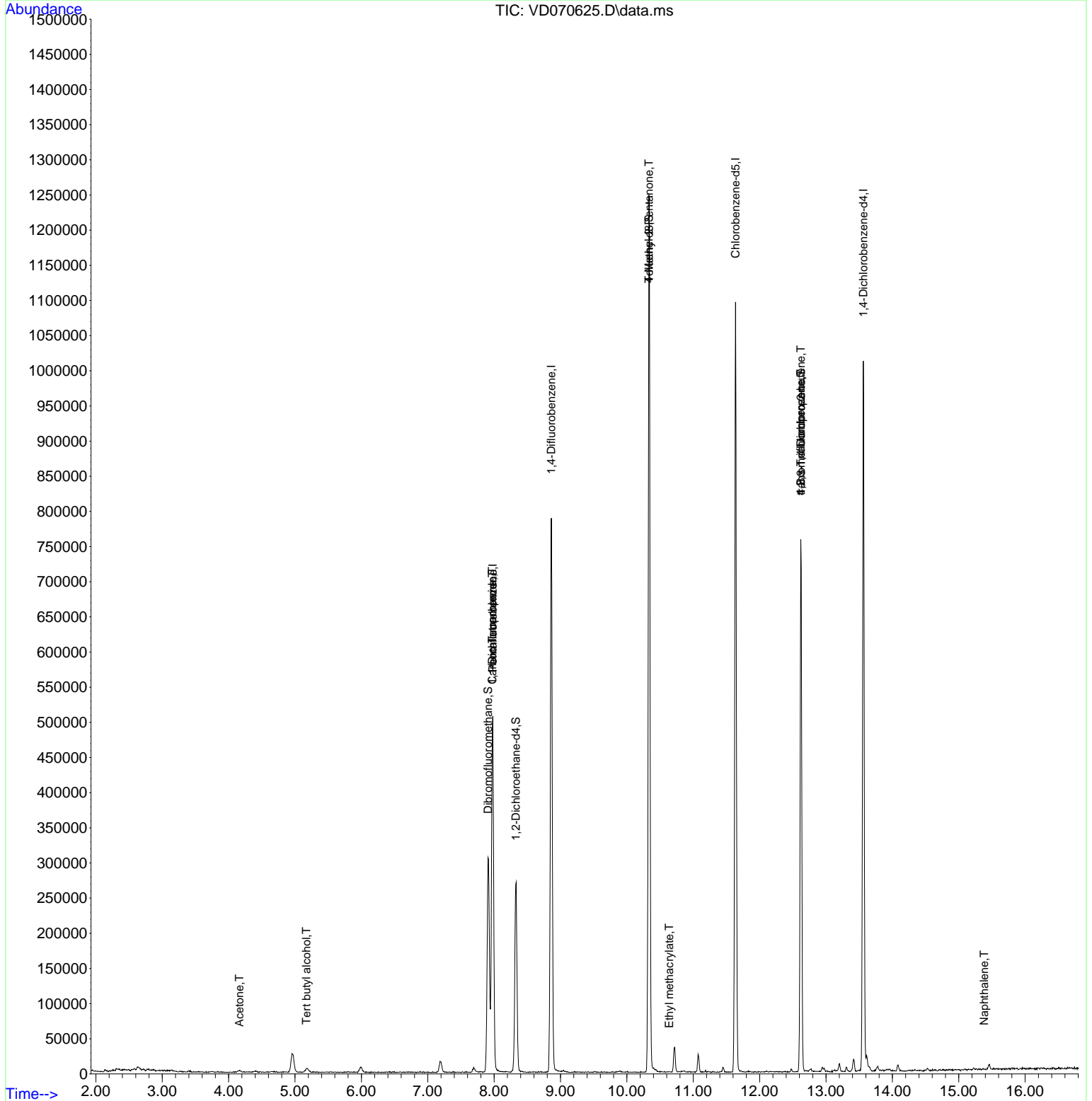
Compound	R.T.	QIon	Response	Conc	Units	Dev(Min)
-----						
Internal Standards						
1) Pentafluorobenzene	7.979	168	363014	50.00	ug/l	0.00
34) 1,4-Difluorobenzene	8.861	114	675987	50.00	ug/l	0.00
63) Chlorobenzene-d5	11.638	117	652930	50.00	ug/l	0.00
72) 1,4-Dichlorobenzene-d4	13.561	152	269999	50.00	ug/l	0.00
System Monitoring Compounds						
33) 1,2-Dichloroethane-d4	8.326	65	219080	51.28	ug/l	0.00
Spiked Amount	50.000	Range	50 - 163	Recovery	=	102.56%
35) Dibromofluoromethane	7.908	113	228422	50.82	ug/l	0.00
Spiked Amount	50.000	Range	54 - 147	Recovery	=	101.64%
50) Toluene-d8	10.332	98	882223	51.35	ug/l	0.00
Spiked Amount	50.000	Range	49 - 140	Recovery	=	102.70%
62) 4-Bromofluorobenzene	12.620	95	260431	45.35	ug/l	0.00
Spiked Amount	50.000	Range	25 - 144	Recovery	=	90.70%
Target Compounds						
					Qvalue	
5) Bromomethane	2.779	94	1113	Below Cal	#	67
11) Tert butyl alcohol	5.173	59	5338	25.22	ug/l #	83
16) Acetone	4.162	43	4526	6.24	ug/l	92
20) Methylene Chloride	4.956	84	22115	Below Cal	#	90
36) 1,1-Dichloropropene	7.973	75	31840	4.43	ug/l #	50
38) Carbon Tetrachloride	7.973	117	38063	5.07	ug/l #	18
51) 4-Methyl-2-Pentanone	10.332	43	3362	1.49	ug/l #	1
56) Ethyl methacrylate	10.638	69	268	1.43	ug/l #	63
59) 2-Hexanone	11.067	43	441	Below Cal	#	36
76) 1,2,3-Trichloropropane	12.620	75	125009	51.15	ug/l #	100
81) trans-1,4-Dichloro-2-b...	12.620	75	125009	113.57	ug/l #	17
95) Naphthalene	15.385	128	80	2.50	ug/l #	69
-----						

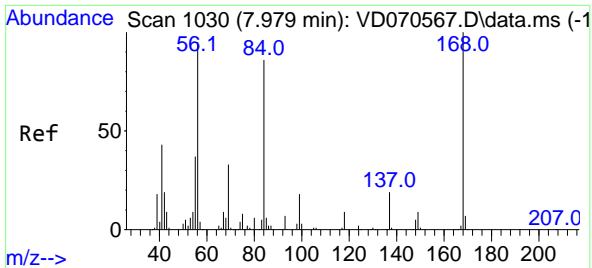
(#) = qualifier out of range (m) = manual integration (+) = signals summed

Data Path : Z:\voasrv\HPCHEM1\MSVOA\_D\Data\VD100721\  
 Data File : VD070625.D  
 Acq On : 07 Oct 2021 19:06  
 Operator : VA/SY  
 Sample : M4117-08  
 Misc : 4.48G/5.00ml/MSVOA\_D/SOIL  
 ALS Vial : 23 Sample Multiplier: 1

Instrument :  
 MSVOA\_D  
 Client Sampled :  
 SB-3(3.0-3.5)

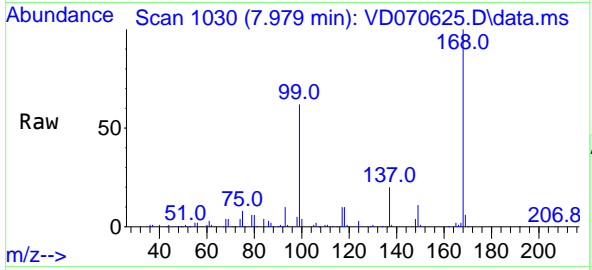
Quant Time: Oct 08 04:54:54 2021  
 Quant Method : Z:\voasrv\HPCHEM1\MSVOA\_D\Method\82D100521S.M  
 Quant Title : SW846 8260  
 QLast Update : Wed Oct 06 09:10:31 2021  
 Response via : Initial Calibration



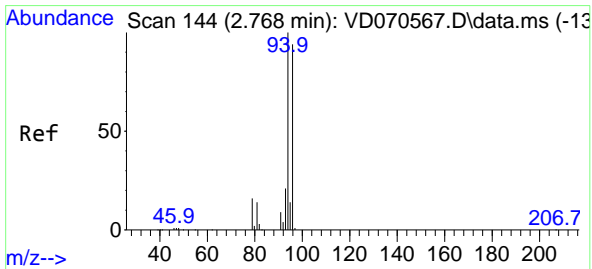
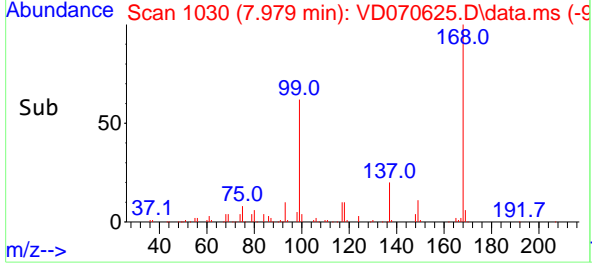
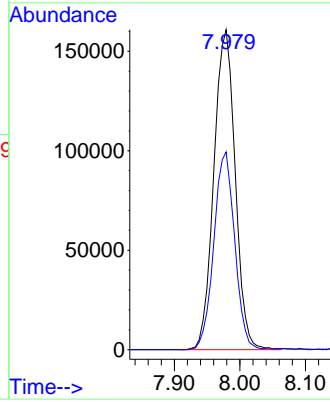


#1  
 Pentafluorobenzene  
 Concen: 50.00 ug/l  
 RT: 7.979 min Scan# 1030  
 Delta R.T. 0.000 min  
 Lab File: VD070625.D  
 Acq: 07 Oct 2021 19:06

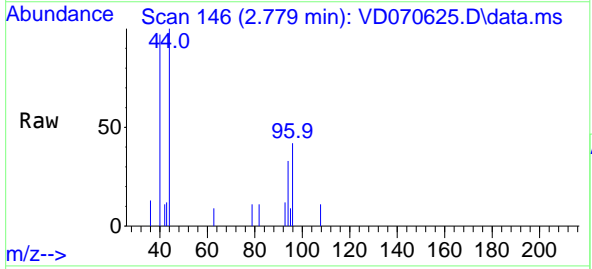
**Instrument :**  
 MSVOA\_D  
**ClientSampled :**  
 SB-3(3.0-3.5)



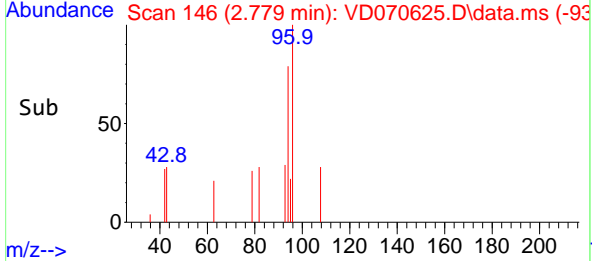
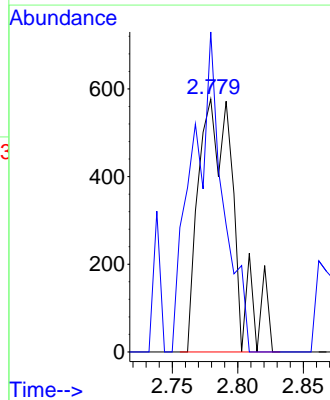
Tgt Ion:168 Resp: 363014  
 Ion Ratio Lower Upper  
 168 100  
 99 61.8 51.4 77.0

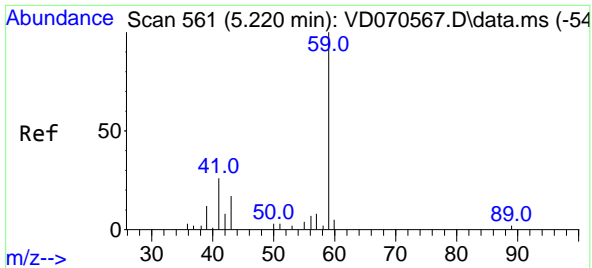


#5  
 Bromomethane  
 Concen: Below Cal  
 RT: 2.779 min Scan# 146  
 Delta R.T. 0.011 min  
 Lab File: VD070625.D  
 Acq: 07 Oct 2021 19:06



Tgt Ion: 94 Resp: 1113  
 Ion Ratio Lower Upper  
 94 100  
 96 126.5 75.5 113.3#

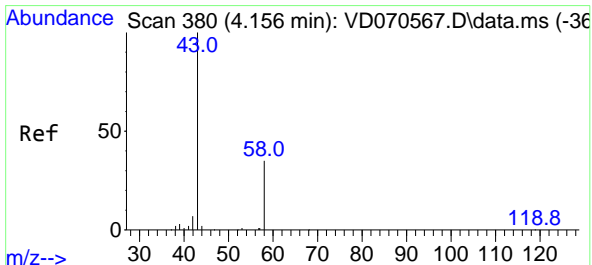
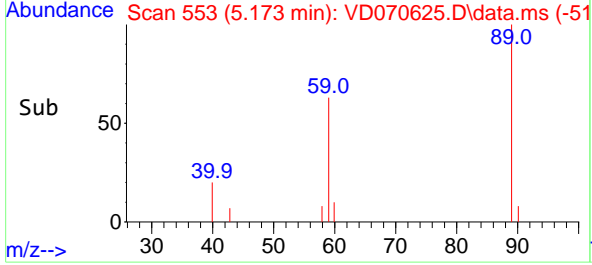
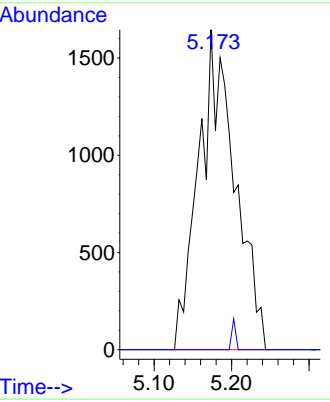
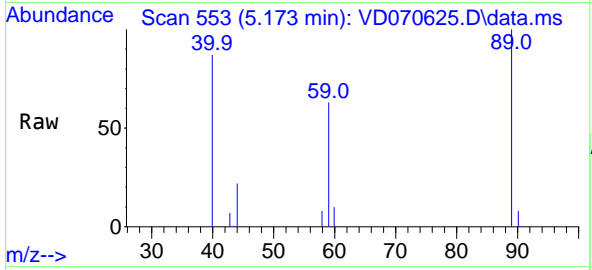




#11  
 Tert butyl alcohol  
 Concen: 25.22 ug/l  
 RT: 5.173 min Scan# 553  
 Delta R.T. -0.047 min  
 Lab File: VD070625.D  
 Acq: 07 Oct 2021 19:06

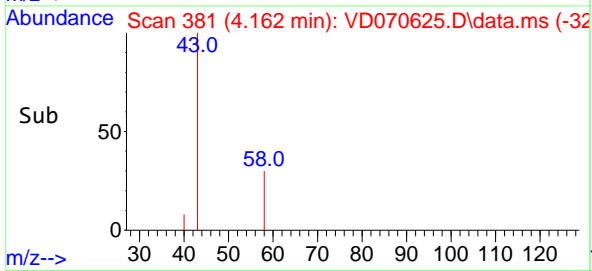
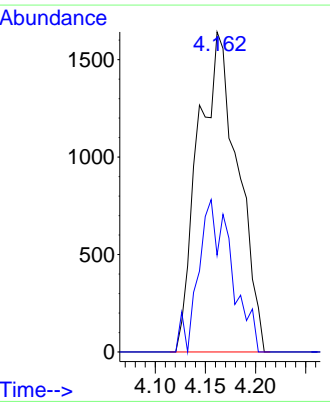
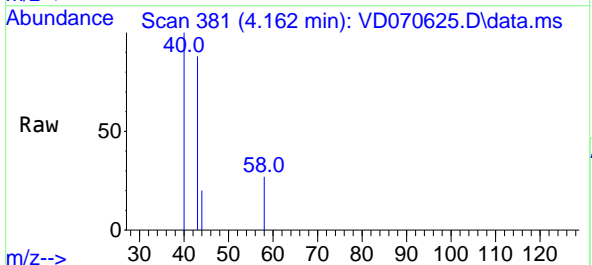
**Instrument :**  
 MSVOA\_D  
**ClientSampled :**  
 SB-3(3.0-3.5)

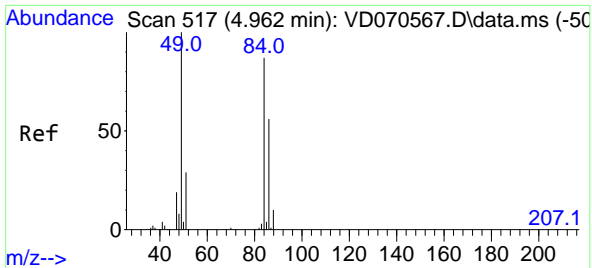
Tgt Ion: 59 Resp: 5338  
 Ion Ratio Lower Upper  
 59 100  
 57 0.0 4.5 6.7#



#16  
 Acetone  
 Concen: 6.24 ug/l  
 RT: 4.162 min Scan# 381  
 Delta R.T. 0.006 min  
 Lab File: VD070625.D  
 Acq: 07 Oct 2021 19:06

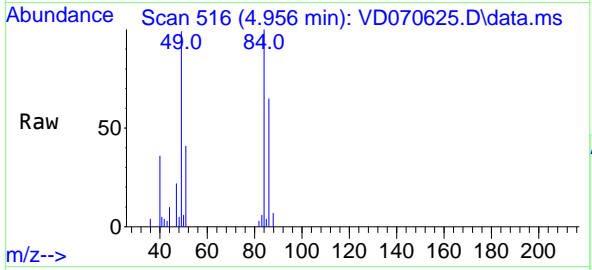
Tgt Ion: 43 Resp: 4526  
 Ion Ratio Lower Upper  
 43 100  
 58 30.3 28.2 42.2



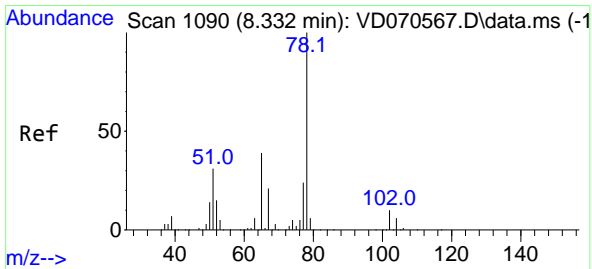
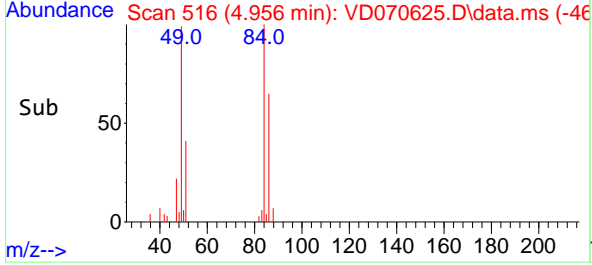
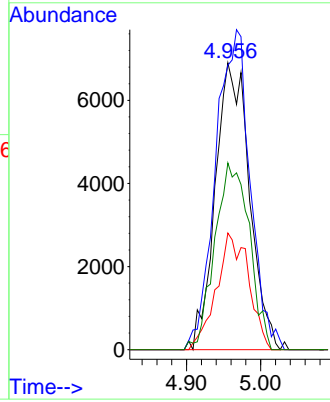


#20  
Methylene Chloride  
Concen: Below Cal  
RT: 4.956 min Scan# 516  
Delta R.T. -0.006 min  
Lab File: VD070625.D  
Acq: 07 Oct 2021 19:06

Instrument :  
MSVOA\_D  
ClientSampleId :  
SB-3(3.0-3.5)

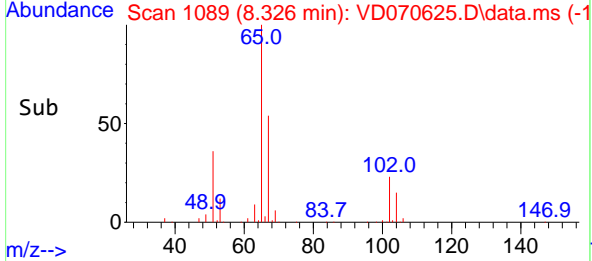
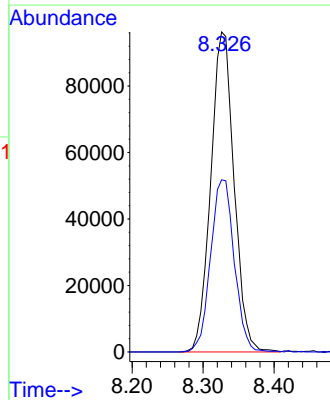
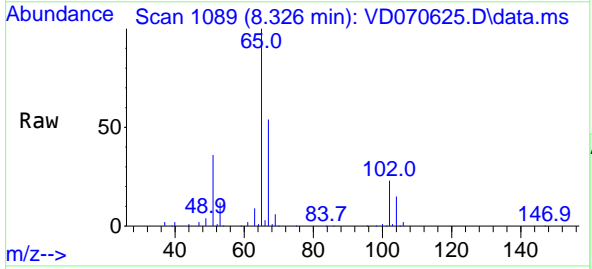


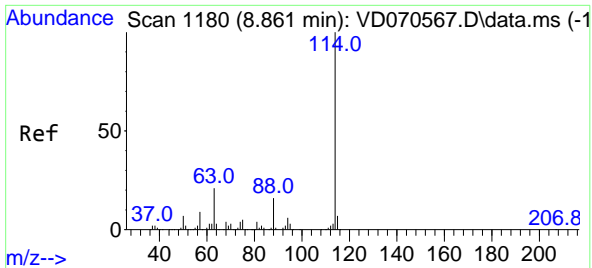
Tgt Ion: 84 Resp: 22115  
Ion Ratio Lower Upper  
84 100  
49 99.2 91.4 137.2  
51 40.6 26.7 40.1#  
86 65.1 50.8 76.2



#33  
1,2-Dichloroethane-d4  
Concen: 51.28 ug/l  
RT: 8.326 min Scan# 1089  
Delta R.T. -0.006 min  
Lab File: VD070625.D  
Acq: 07 Oct 2021 19:06

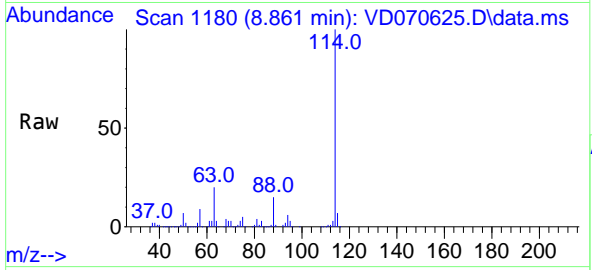
Tgt Ion: 65 Resp: 219080  
Ion Ratio Lower Upper  
65 100  
67 54.7 0.0 110.2





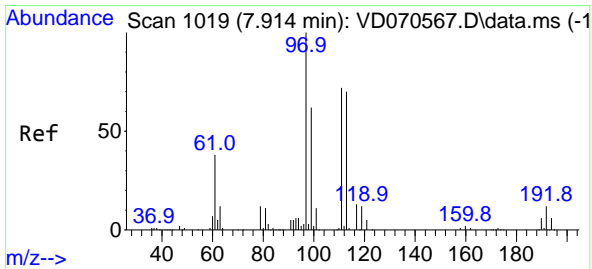
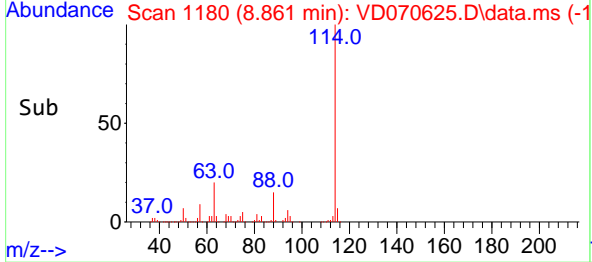
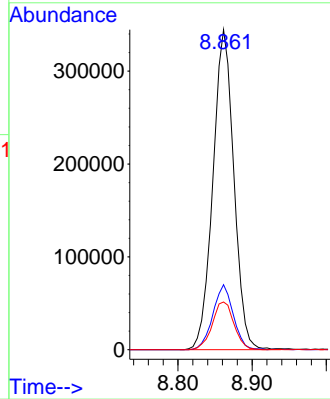
#34  
 1,4-Difluorobenzene  
 Concen: 50.00 ug/l  
 RT: 8.861 min Scan# 1180  
 Delta R.T. -0.000 min  
 Lab File: VD070625.D  
 Acq: 07 Oct 2021 19:06

Instrument :  
 MSVOA\_D  
 ClientSampled :  
 SB-3(3.0-3.5)

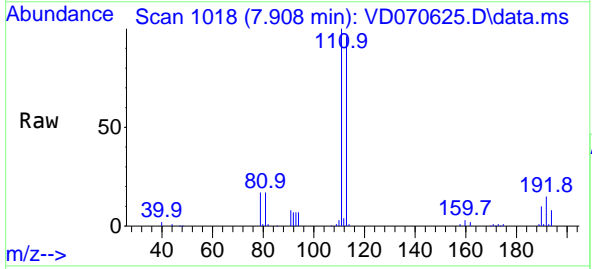


Tgt Ion:114 Resp: 675987

Ion	Ratio	Lower	Upper
114	100		
63	20.3	0.0	41.8
88	14.9	0.0	32.6

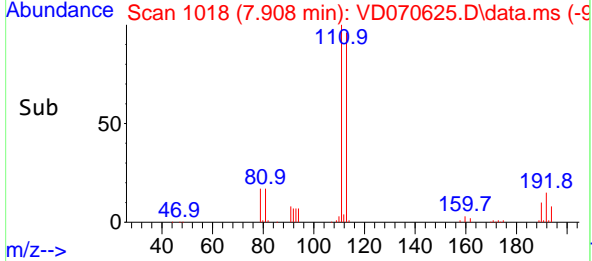
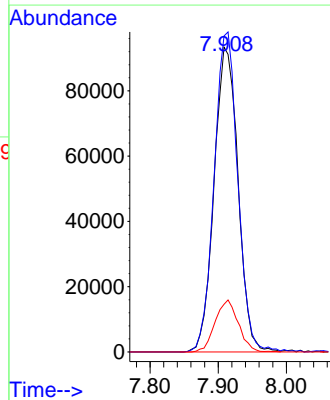


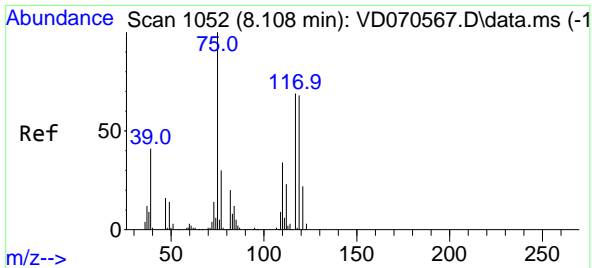
#35  
 Dibromofluoromethane  
 Concen: 50.82 ug/l  
 RT: 7.908 min Scan# 1018  
 Delta R.T. -0.006 min  
 Lab File: VD070625.D  
 Acq: 07 Oct 2021 19:06



Tgt Ion:113 Resp: 228422

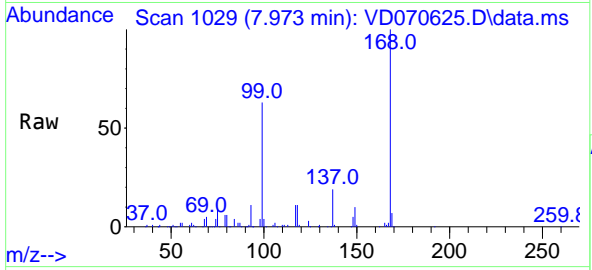
Ion	Ratio	Lower	Upper
113	100		
111	103.8	83.1	124.7
192	16.5	12.7	19.1





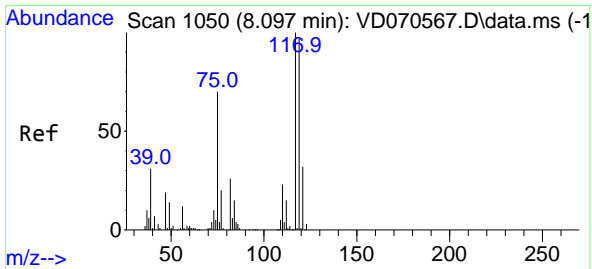
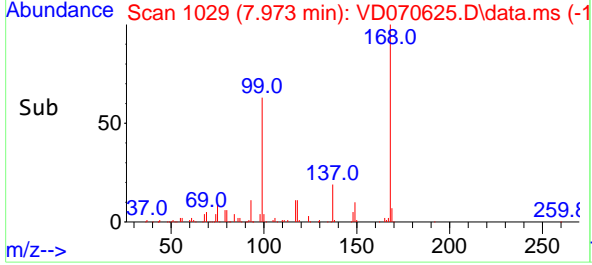
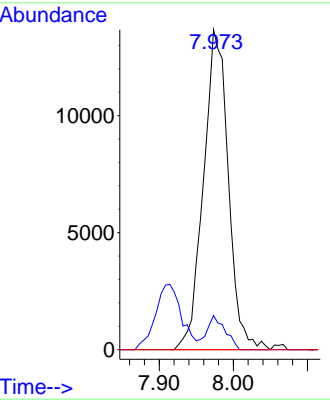
#36  
 1,1-Dichloropropene  
 Concen: 4.43 ug/l  
 RT: 7.973 min Scan# 1029  
 Delta R.T. -0.135 min  
 Lab File: VD070625.D  
 Acq: 07 Oct 2021 19:06

**Instrument :**  
 MSVOA\_D  
**ClientSampled :**  
 SB-3(3.0-3.5)

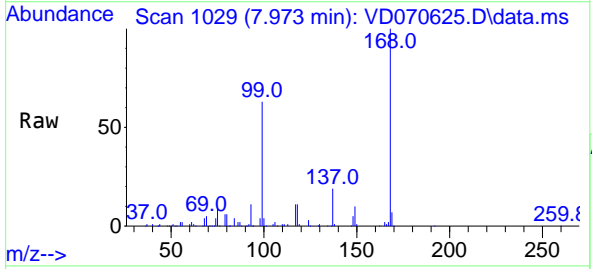


Tgt Ion: 75 Resp: 31840

Ion	Ratio	Lower	Upper
75	100		
110	8.0	17.2	51.6#
77	0.0	24.2	36.4#

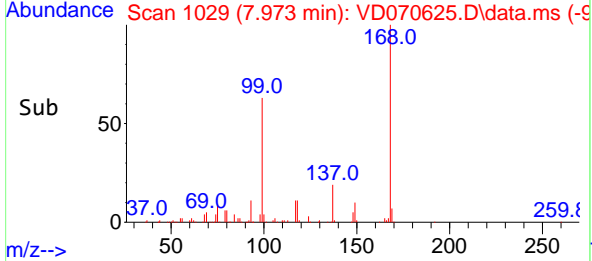
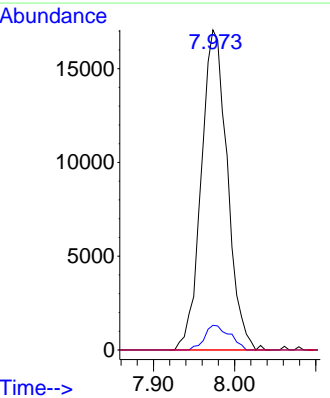


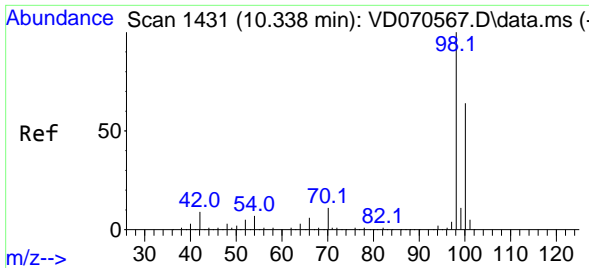
#38  
 Carbon Tetrachloride  
 Concen: 5.07 ug/l  
 RT: 7.973 min Scan# 1029  
 Delta R.T. -0.124 min  
 Lab File: VD070625.D  
 Acq: 07 Oct 2021 19:06



Tgt Ion: 117 Resp: 38063

Ion	Ratio	Lower	Upper
117	100		
119	7.7	77.4	116.0#
121	0.0	25.4	38.0#

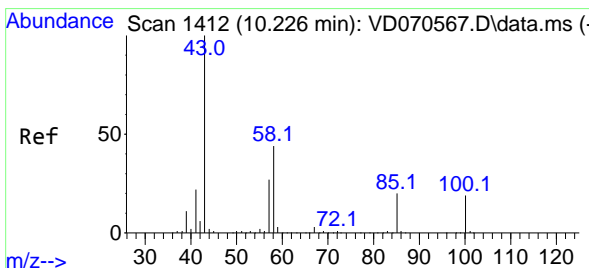
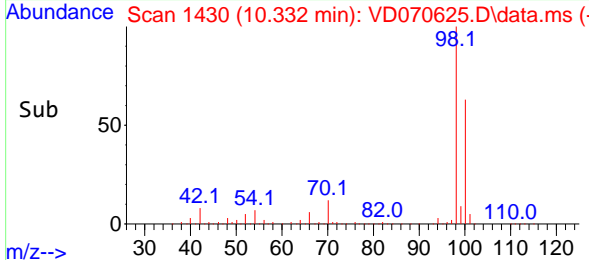
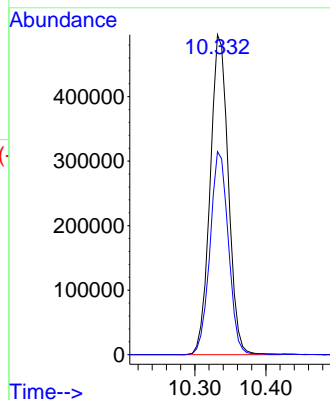
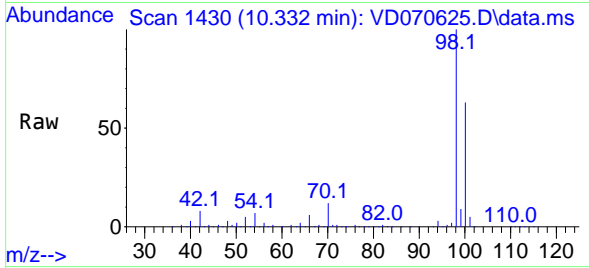




#50  
 Toluene-d8  
 Concen: 51.35 ug/l  
 RT: 10.332 min Scan# 1430  
 Delta R.T. -0.006 min  
 Lab File: VD070625.D  
 Acq: 07 Oct 2021 19:06

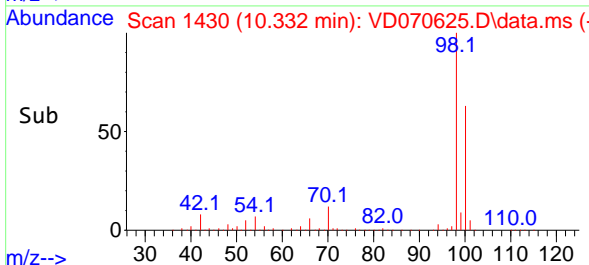
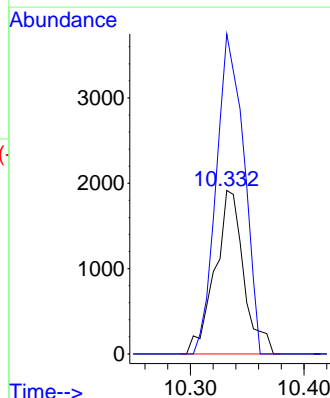
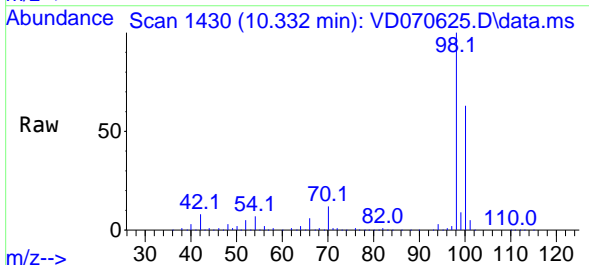
Instrument :  
 MSVOA\_D  
 ClientSampled :  
 SB-3(3.0-3.5)

Tgt Ion: 98 Resp: 882223  
 Ion Ratio Lower Upper  
 98 100  
 100 64.2 52.2 78.4

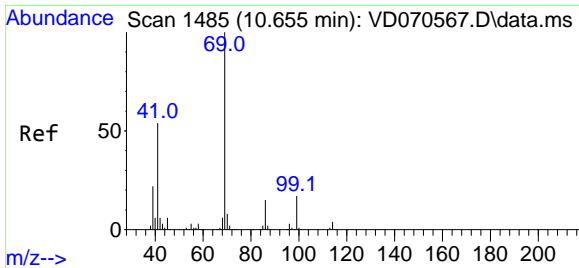


#51  
 4-Methyl-2-Pentanone  
 Concen: 1.49 ug/l  
 RT: 10.332 min Scan# 1430  
 Delta R.T. 0.106 min  
 Lab File: VD070625.D  
 Acq: 07 Oct 2021 19:06

Tgt Ion: 43 Resp: 3362  
 Ion Ratio Lower Upper  
 43 100  
 58 188.3 35.0 52.6#

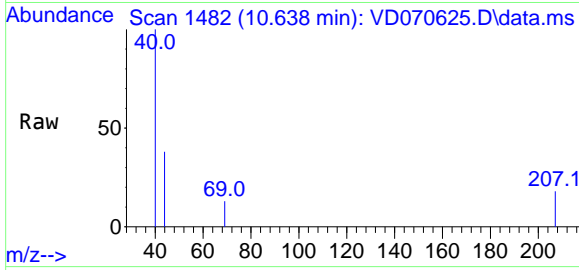






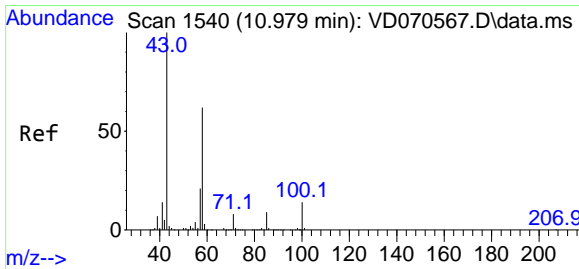
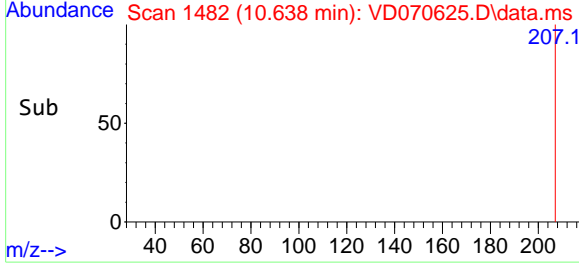
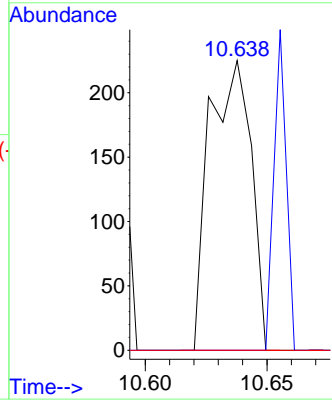
#56  
 Ethyl methacrylate  
 Concen: 1.43 ug/l  
 RT: 10.638 min Scan# 1482  
 Delta R.T. -0.017 min  
 Lab File: VD070625.D  
 Acq: 07 Oct 2021 19:06

**Instrument :**  
 MSVOA\_D  
**ClientSampled :**  
 SB-3(3.0-3.5)

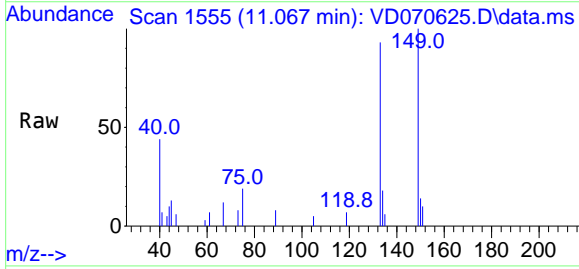


Tgt Ion: 69 Resp: 268

Ion	Ratio	Lower	Upper
69	100		
41	32.8	44.7	67.1#
39	0.0	19.5	29.3#

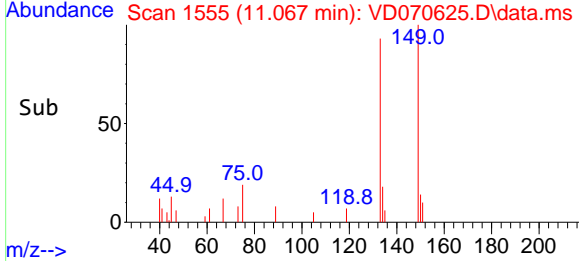
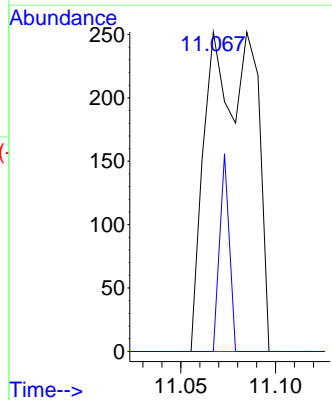


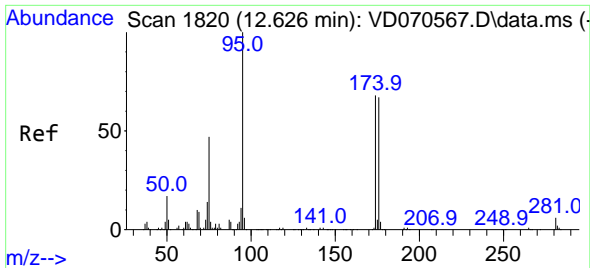
#59  
 2-Hexanone  
 Concen: Below Cal  
 RT: 11.067 min Scan# 1555  
 Delta R.T. 0.088 min  
 Lab File: VD070625.D  
 Acq: 07 Oct 2021 19:06



Tgt Ion: 43 Resp: 441

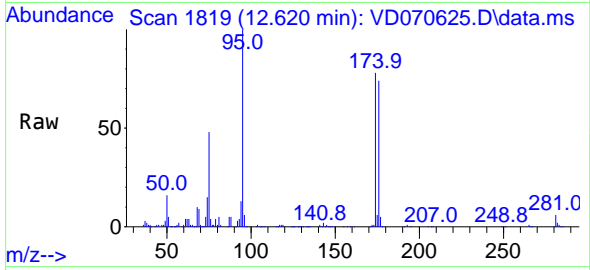
Ion	Ratio	Lower	Upper
43	100		
58	12.5	30.4	91.3#



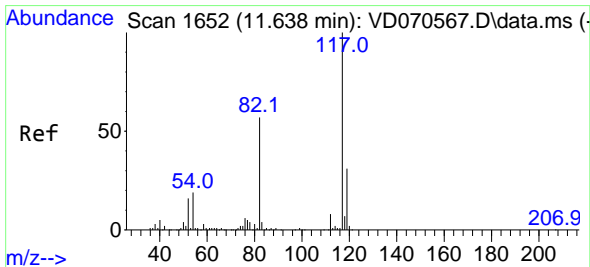
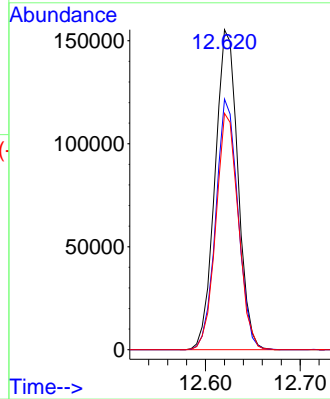
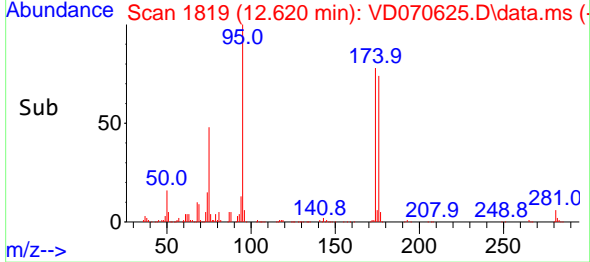


#62  
 4-Bromofluorobenzene  
 Concen: 45.35 ug/l  
 RT: 12.620 min Scan# 1819  
 Delta R.T. -0.006 min  
 Lab File: VD070625.D  
 Acq: 07 Oct 2021 19:06

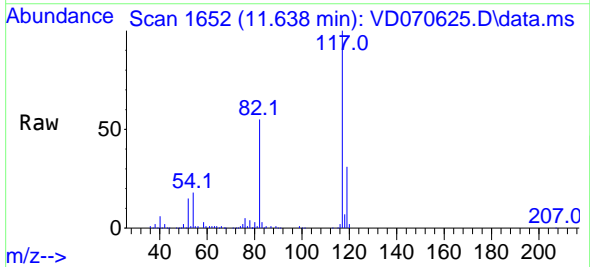
Instrument :  
 MSVOA\_D  
 ClientSampleId :  
 SB-3(3.0-3.5)



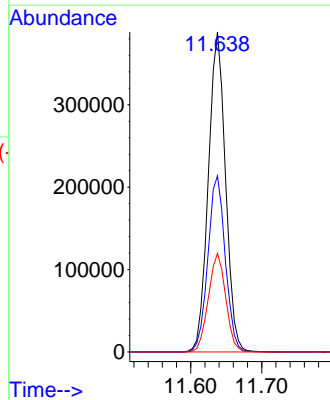
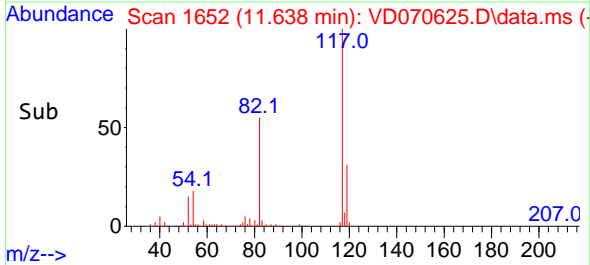
Tgt Ion: 95 Resp: 260431  
 Ion Ratio Lower Upper  
 95 100  
 174 76.1 0.0 138.0  
 176 72.4 0.0 135.6

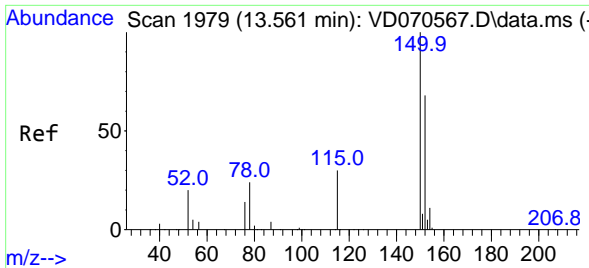


#63  
 Chlorobenzene-d5  
 Concen: 50.00 ug/l  
 RT: 11.638 min Scan# 1652  
 Delta R.T. 0.000 min  
 Lab File: VD070625.D  
 Acq: 07 Oct 2021 19:06



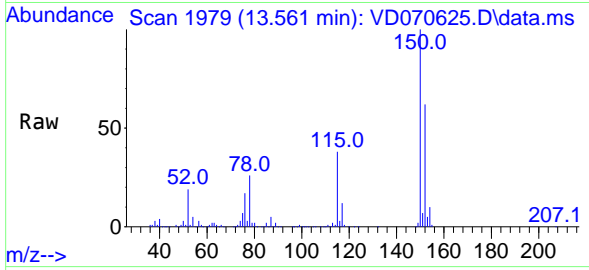
Tgt Ion: 117 Resp: 652930  
 Ion Ratio Lower Upper  
 117 100  
 82 55.1 45.4 68.2  
 119 30.8 24.7 37.1



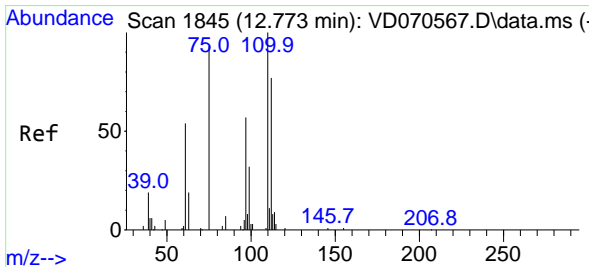
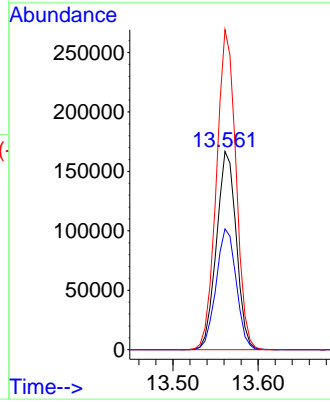
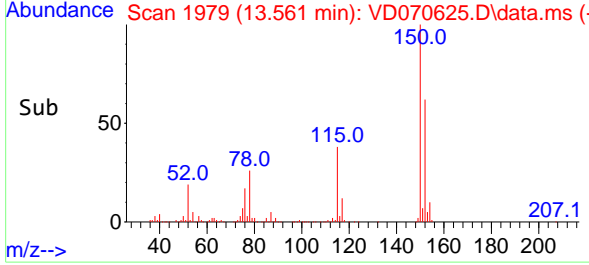


#72  
 1,4-Dichlorobenzene-d4  
 Concen: 50.00 ug/l  
 RT: 13.561 min Scan# 1979  
 Delta R.T. 0.000 min  
 Lab File: VD070625.D  
 Acq: 07 Oct 2021 19:06

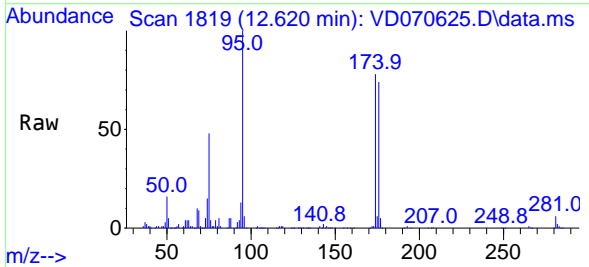
Instrument :  
 MSVOA\_D  
 ClientSampled :  
 SB-3(3.0-3.5)



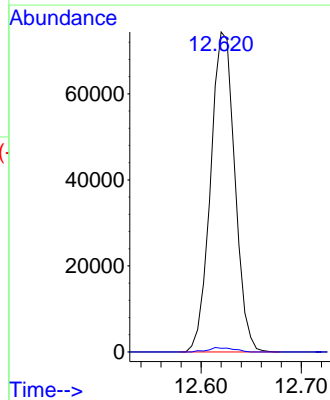
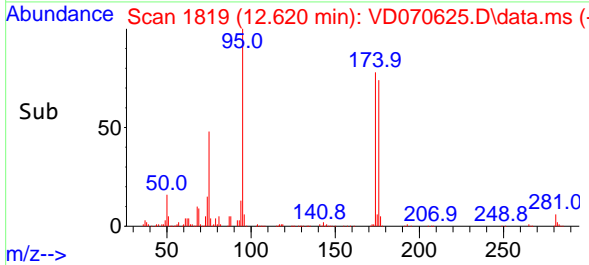
Tgt Ion:152 Resp: 269999  
 Ion Ratio Lower Upper  
 152 100  
 115 62.1 31.9 95.7  
 150 158.8 0.0 350.0

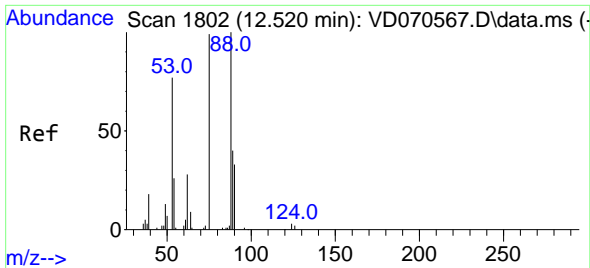


#76  
 1,2,3-Trichloropropane  
 Concen: 51.15 ug/l  
 RT: 12.620 min Scan# 1819  
 Delta R.T. -0.153 min  
 Lab File: VD070625.D  
 Acq: 07 Oct 2021 19:06



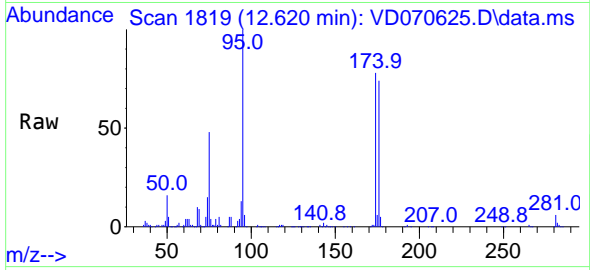
Tgt Ion: 75 Resp: 125009  
 Ion Ratio Lower Upper  
 75 100  
 77 1.4 0.0 0.0#



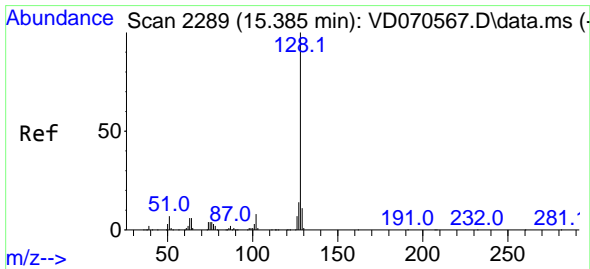
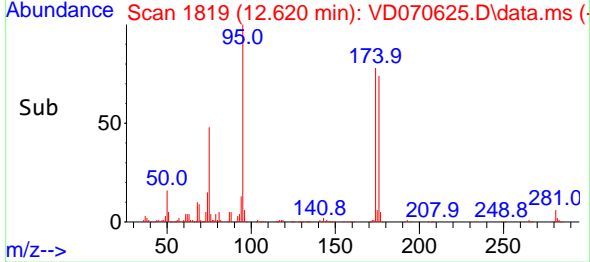
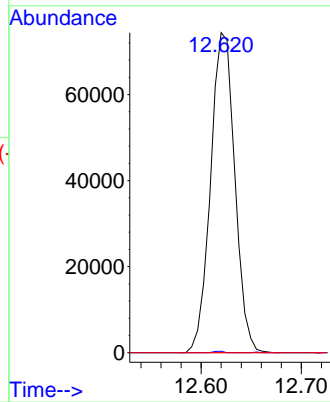


#81  
 trans-1,4-Dichloro-2-butene  
 Concen: 113.57 ug/l  
 RT: 12.620 min Scan# 1819  
 Delta R.T. 0.100 min  
 Lab File: VD070625.D  
 Acq: 07 Oct 2021 19:06

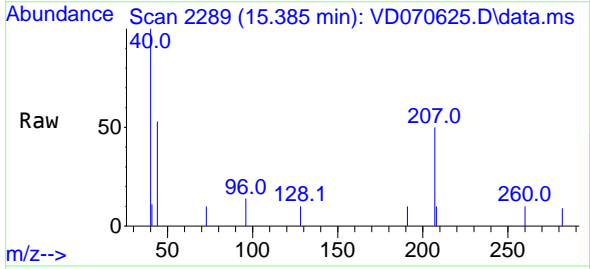
Instrument :  
 MSVOA\_D  
 ClientSampleId :  
 SB-3(3.0-3.5)



Tgt Ion: 75 Resp: 125009  
 Ion Ratio Lower Upper  
 75 100  
 53 0.2 64.5 96.7#  
 89 0.0 35.3 52.9#



#95  
 Naphthalene  
 Concen: 2.50 ug/l  
 RT: 15.385 min Scan# 2289  
 Delta R.T. -0.000 min  
 Lab File: VD070625.D  
 Acq: 07 Oct 2021 19:06



Tgt Ion:128 Resp: 80  
 Ion Ratio Lower Upper  
 128 100  
 127 0.0 10.9 16.3#  
 129 0.0 8.6 12.8#

