

Data Path : Z:\VOASRV\HPCHEM1\MSVOA_D\DATA\VD100820\
 Data File : VD067187.D
 Acq On : 08 Oct 2020 11:52
 Operator : VA/SY
 Sample : L4303-21
 Misc : 9.76G/5.00ml/MSVOA_D/SOIL
 ALS Vial : 6 Sample Multiplier: 1

Instrument :
 MSVOA_D
 ClientSampleId :
 IDW-20201006

Quant Time: Oct 08 18:57:40 2020
 Quant Method : Z:\VOASRV\HPCHEM1\MSVOA_D\METHOD\82D100120S.M
 Quant Title : SW846 8260
 QLast Update : Thu Oct 01 15:19:17 2020
 Response via : Initial Calibration

Internal Standards	R.T.	QIon	Response	Conc	Units	Dev(Min)
1) Pentafluorobenzene	7.98	168	394919	50.00	ug/l	0.00
34) 1,4-Difluorobenzene	8.87	114	632352	50.00	ug/l	0.00
63) Chlorobenzene-d5	11.64	117	585182	50.00	ug/l	0.00
72) 1,4-Dichlorobenzene-d4	13.58	152	272417	50.00	ug/l	0.00

System Monitoring Compounds

33) 1,2-Dichloroethane-d4	8.33	65	190282	50.02	ug/l	0.00
Spiked Amount	50.000		Recovery	=	100.04%	
35) Dibromofluoromethane	7.92	113	200772	48.50	ug/l	0.00
Spiked Amount	50.000		Recovery	=	97.00%	
50) Toluene-d8	10.34	98	739561	49.03	ug/l	0.00
Spiked Amount	50.000		Recovery	=	98.06%	
62) 4-Bromofluorobenzene	12.64	95	246568	48.15	ug/l	0.00
Spiked Amount	50.000		Recovery	=	96.30%	

Target Compounds

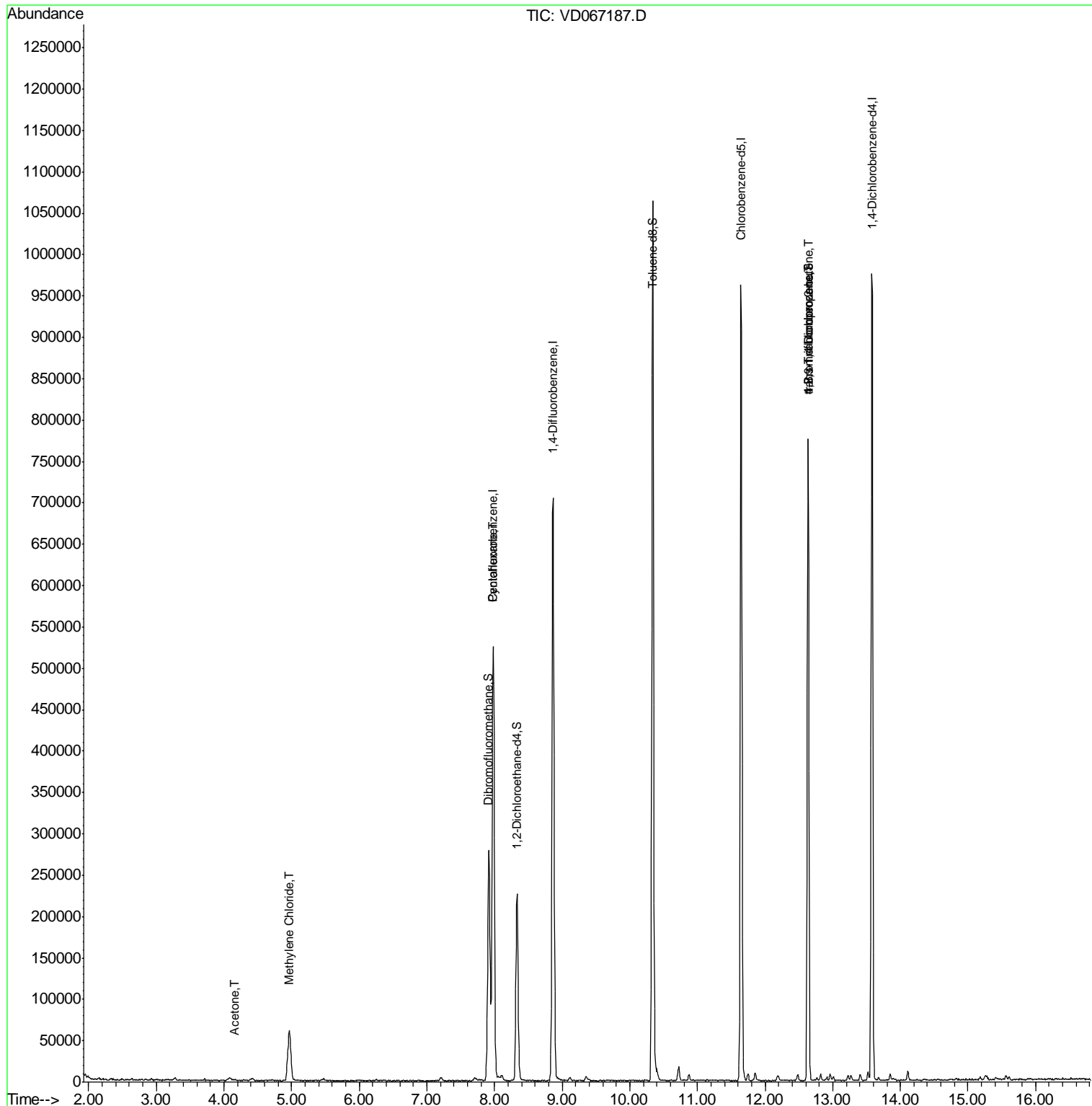
					Qvalue
2) Dichlorodifluoromethane	1.99	85	1972	Below Cal	76
5) Bromomethane	2.76	94	143	Below Cal #	66
11) Tert butyl alcohol	5.19	59	82	Below Cal #	72
16) Acetone	4.16	43	807	1.390 ug/l #	42
20) Methylene Chloride	4.97	84	52233	6.321 ug/l	96
26) 2,2-Dichloropropane	7.22	77	1410	Below Cal #	53
31) Cyclohexane	7.98	56	9203	1.611 ug/l #	32
76) 1,2,3-Trichloropropane	12.64	75	126074	53.132 ug/l #	100
81) trans-1,4-Dichloro-2-buten	12.64	75	126074	132.465 ug/l #	12

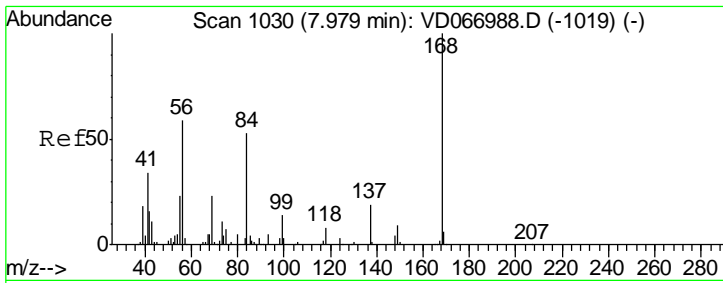
(#) = qualifier out of range (m) = manual integration (+) = signals summed

Data Path : Z:\VOASRV\HPCHEM1\MSVOA_D\DATA\VD100820\
 Data File : VD067187.D
 Acq On : 08 Oct 2020 11:52
 Operator : VA/SY
 Sample : L4303-21
 Misc : 9.76G/5.00ml/MSVOA_D/SOIL
 ALS Vial : 6 Sample Multiplier: 1

Instrument :
 MSVOA_D
 ClientSampleID :
 IDW-20201006

Quant Time: Oct 08 18:57:40 2020
 Quant Method : Z:\VOASRV\HPCHEM1\MSVOA_D\METHOD\82D100120S.M
 Quant Title : SW846 8260
 QLast Update : Thu Oct 01 15:19:17 2020
 Response via : Initial Calibration

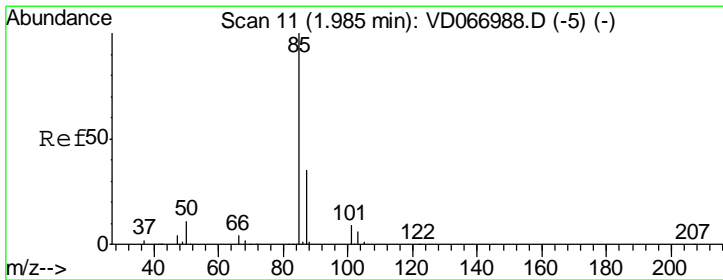
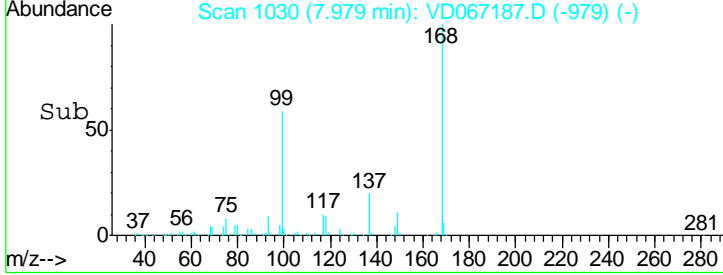
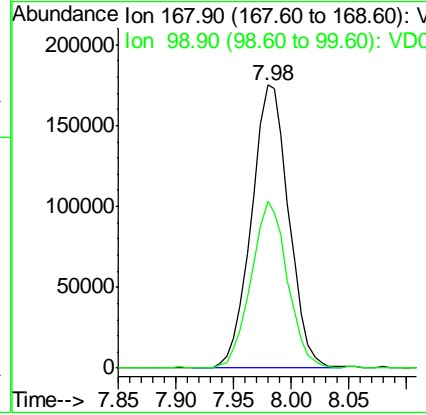
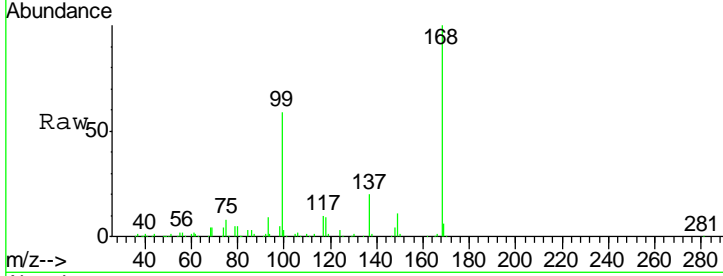




#1
 Pentafluorobenzene
 Concen: 50.000 ug/l
 RT: 7.98 min Scan# 1030
 Delta R.T. 0.00 min
 Lab File: VD067187.D
 Acq: 08 Oct 2020 11:52

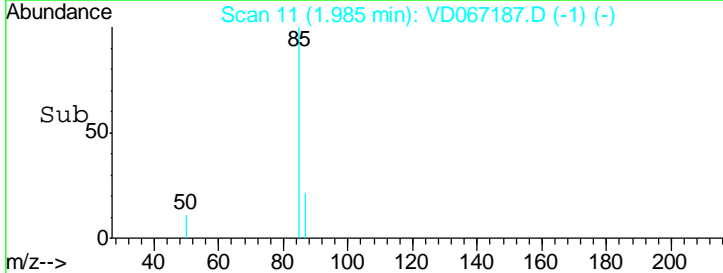
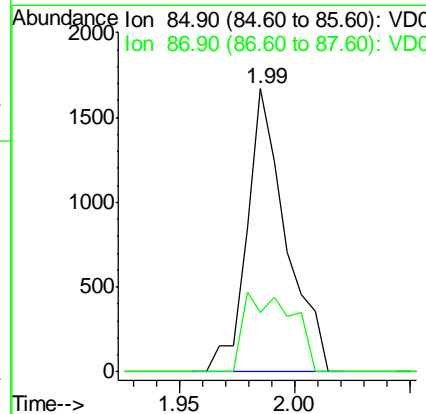
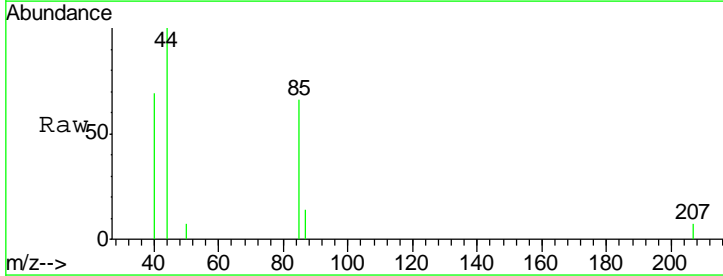
Instrument : MSVOA_D
 ClientSampleID : IDW-20201006

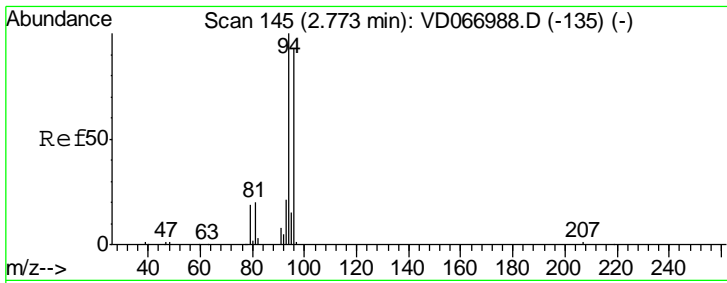
Tgt Ion: 168 Resp: 394919
 Ion Ratio Lower Upper
 168 100
 99 58.6 44.1 66.1



#2
 Dichlorodifluoromethane
 Concen: Below Cal
 RT: 1.99 min Scan# 11
 Delta R.T. 0.00 min
 Lab File: VD067187.D
 Acq: 08 Oct 2020 11:52

Tgt Ion: 85 Resp: 1972
 Ion Ratio Lower Upper
 85 100
 87 20.9 17.3 52.0

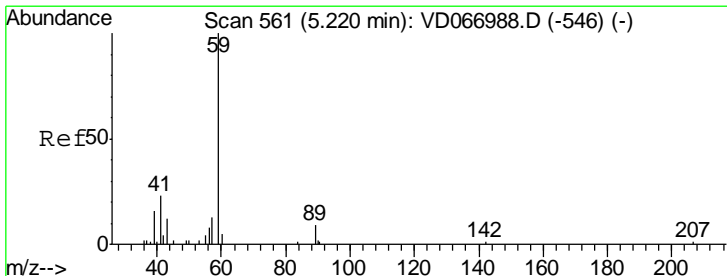
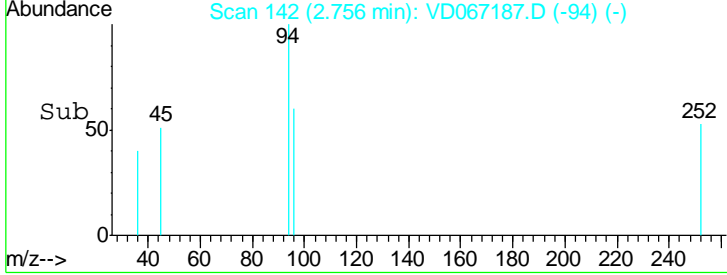
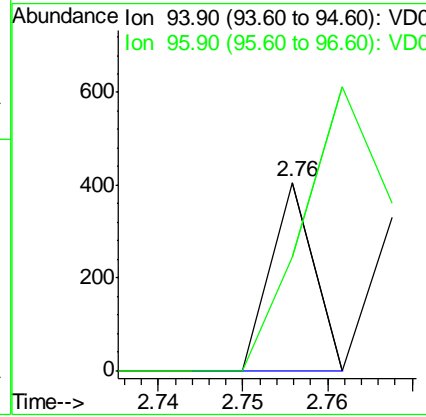
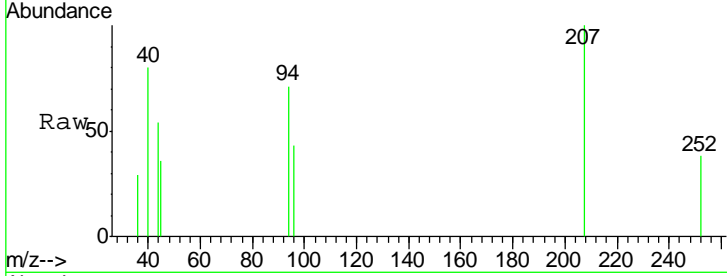




#5
 Bromomethane
 Concen: Below Cal
 RT: 2.76 min Scan# 142
 Delta R.T. -0.02 min
 Lab File: VD067187.D
 Acq: 08 Oct 2020 11:52

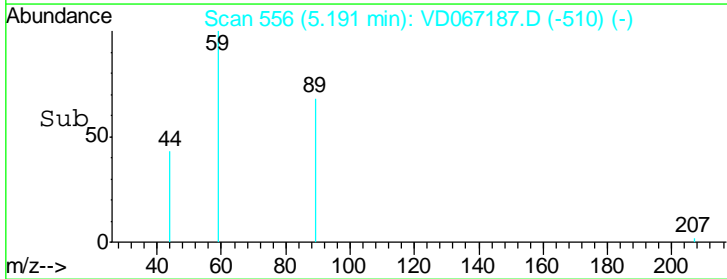
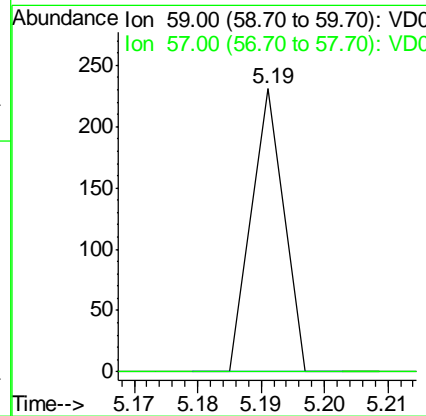
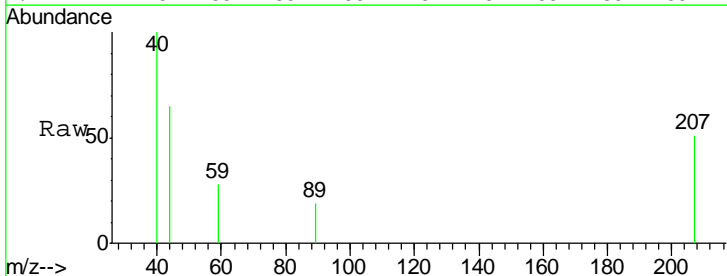
Instrument : MSVOA_D
 ClientSampleID : IDW-20201006

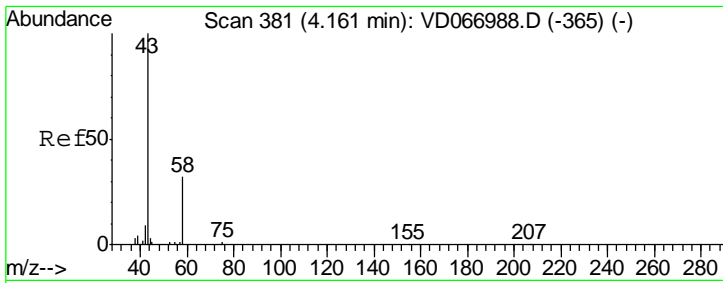
Tgt Ion: 94 Resp: 143
 Ion Ratio Lower Upper
 94 100
 96 60.3 74.6 112.0#



#11
 Tert butyl alcohol
 Concen: Below Cal
 RT: 5.19 min Scan# 556
 Delta R.T. -0.03 min
 Lab File: VD067187.D
 Acq: 08 Oct 2020 11:52

Tgt Ion: 59 Resp: 82
 Ion Ratio Lower Upper
 59 100
 57 0.0 8.2 12.4#

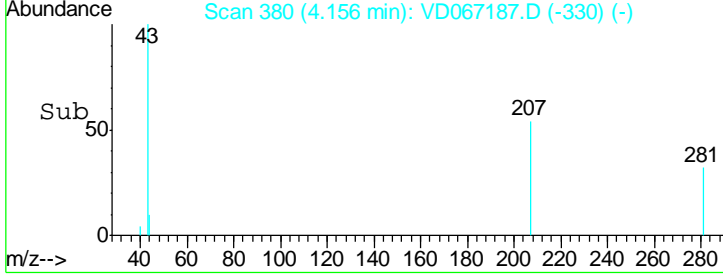
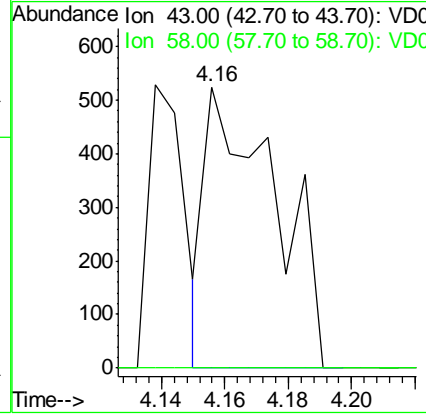
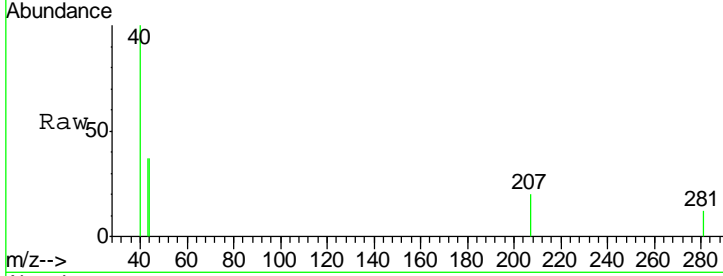




#16
 Acetone
 Concen: 1.390 ug/l
 RT: 4.16 min Scan# 380
 Delta R.T. -0.01 min
 Lab File: VD067187.D
 Acq: 08 Oct 2020 11:52

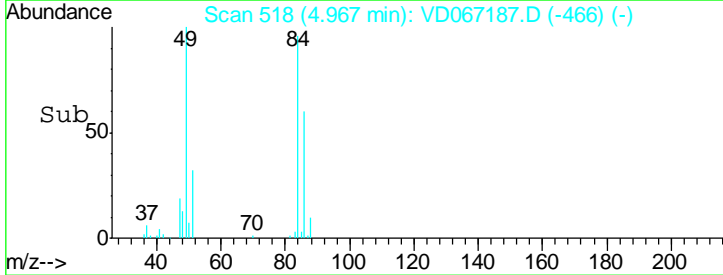
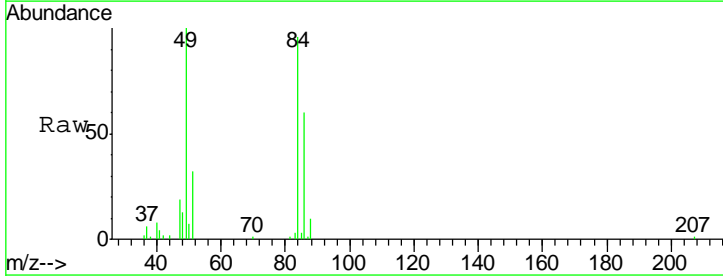
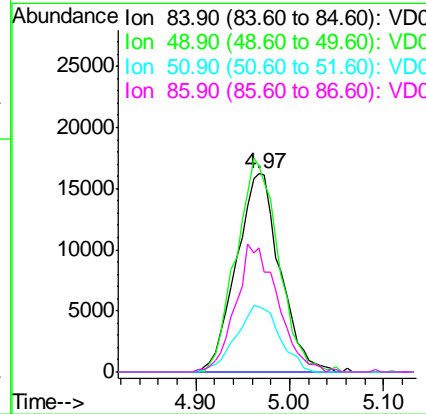
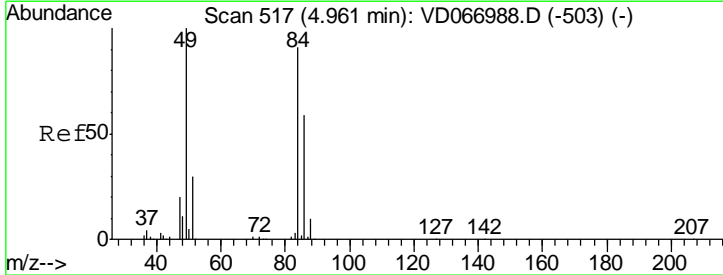
Instrument :
 MSVOA_D
ClientSampled :
 IDW-20201006

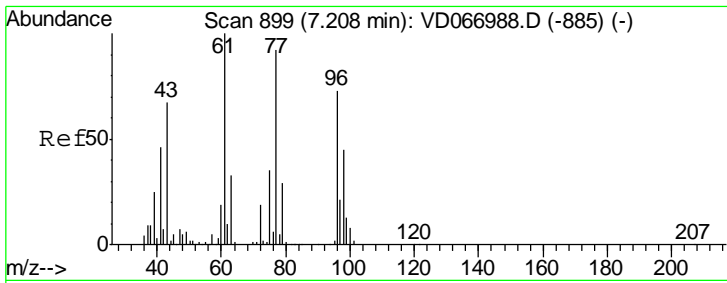
Tgt Ion	Resp	Lower	Upper
43	100		
58	0.0	25.9	38.9#



#20
 Methylene Chloride
 Concen: 6.321 ug/l
 RT: 4.97 min Scan# 518
 Delta R.T. 0.01 min
 Lab File: VD067187.D
 Acq: 08 Oct 2020 11:52

Tgt Ion	Resp	Lower	Upper
84	100		
49	104.2	88.2	132.2
51	33.1	26.6	39.8
86	62.9	52.1	78.1

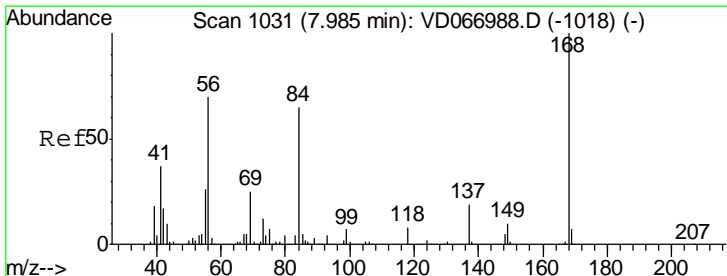
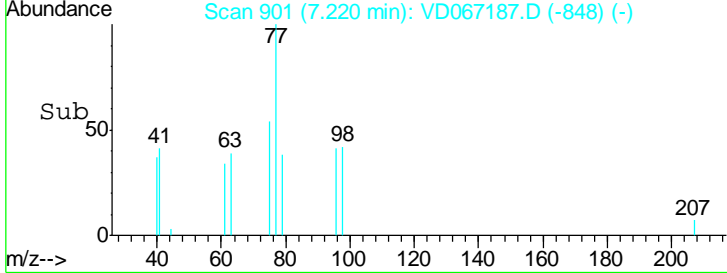
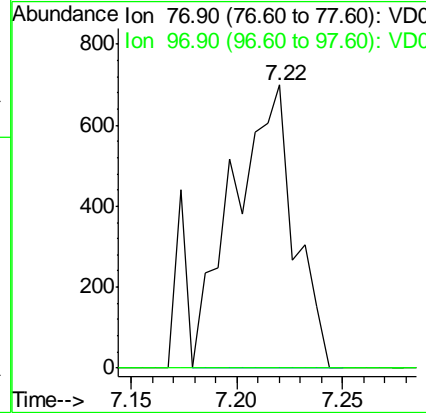
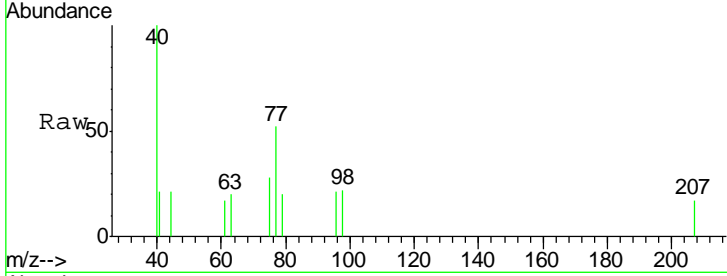




#26
 2,2-Dichloropropane
 Concen: Below Cal
 RT: 7.22 min Scan# 901
 Delta R.T. 0.01 min
 Lab File: VD067187.D
 Acq: 08 Oct 2020 11:52

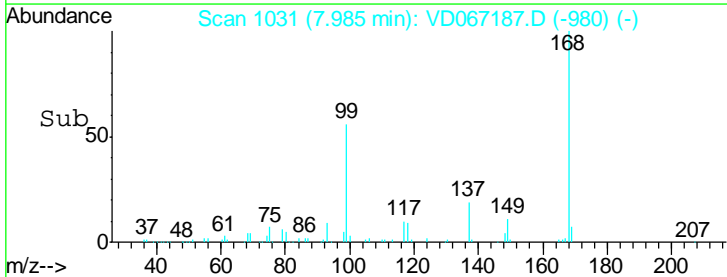
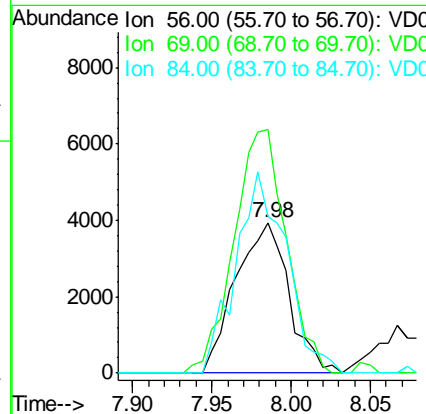
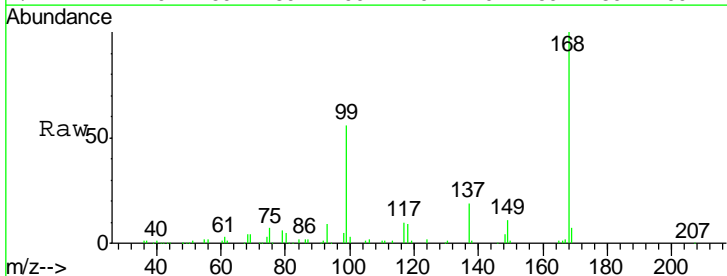
Instrument :
 MSVOA_D
 ClientSampleID :
 IDW-20201006

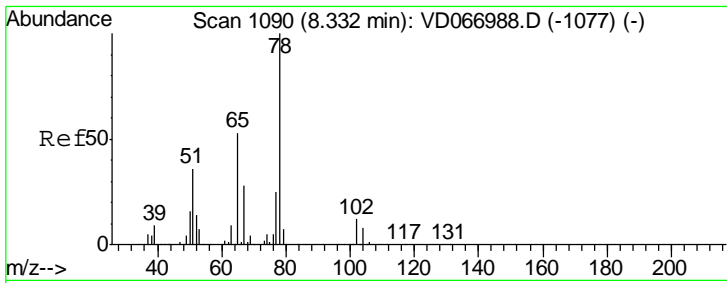
Tgt Ion: 77 Resp: 1410
 Ion Ratio Lower Upper
 77 100
 97 0.0 11.4 34.2#



#31
 Cyclohexane
 Concen: 1.611 ug/l
 RT: 7.98 min Scan# 1031
 Delta R.T. 0.00 min
 Lab File: VD067187.D
 Acq: 08 Oct 2020 11:52

Tgt Ion: 56 Resp: 9203
 Ion Ratio Lower Upper
 56 100
 69 161.6 29.0 43.6#
 84 104.3 74.2 111.2

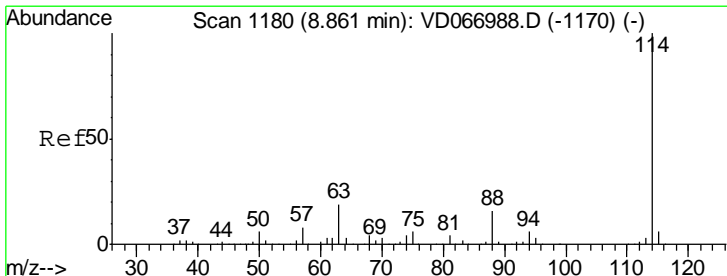
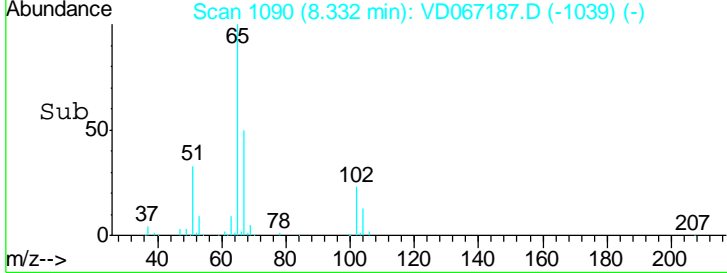
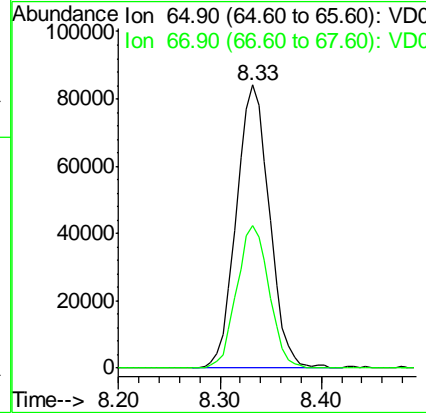
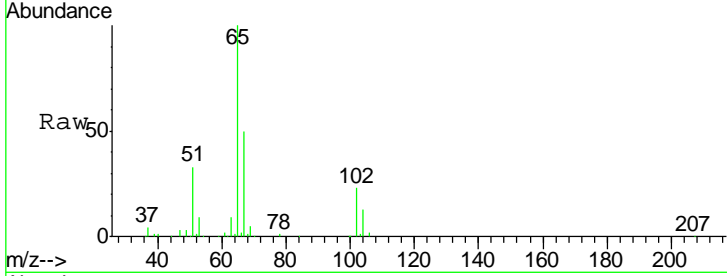




#33
 1,2-Dichloroethane-d4
 Concen: 50.024 ug/l
 RT: 8.33 min Scan# 1090
 Delta R.T. 0.00 min
 Lab File: VD067187.D
 Acq: 08 Oct 2020 11:52

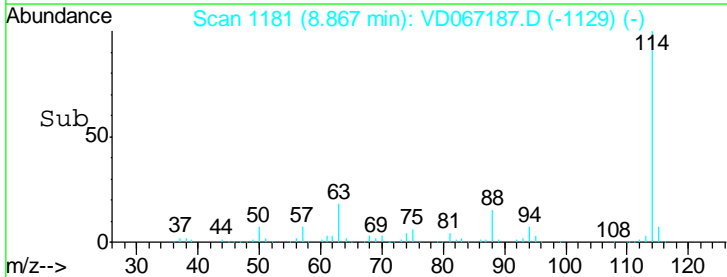
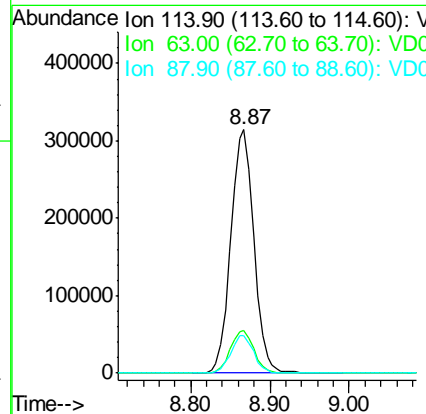
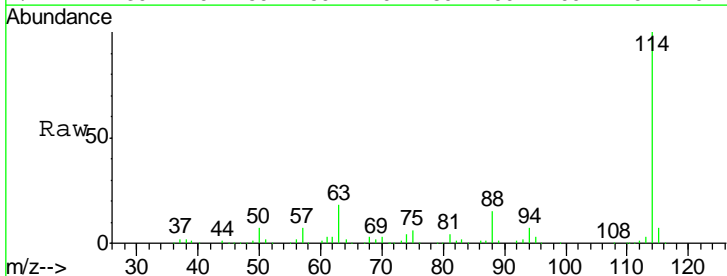
Instrument :
 MSVOA_D
ClientSampled :
 IDW-20201006

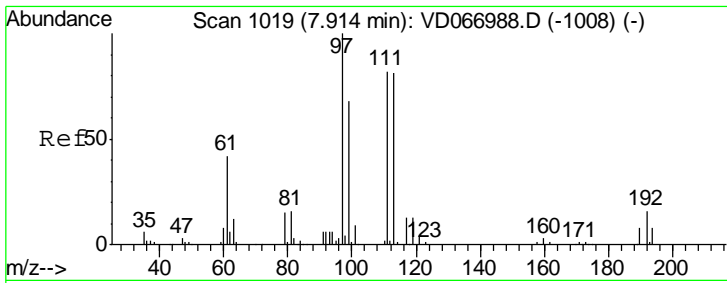
Tgt Ion: 65 Resp: 190282
 Ion Ratio Lower Upper
 65 100
 67 49.4 0.0 106.8



#34
 1,4-Difluorobenzene
 Concen: 50.000 ug/l
 RT: 8.87 min Scan# 1181
 Delta R.T. 0.01 min
 Lab File: VD067187.D
 Acq: 08 Oct 2020 11:52

Tgt Ion: 114 Resp: 632352
 Ion Ratio Lower Upper
 114 100
 63 17.5 0.0 38.4
 88 15.5 0.0 31.2

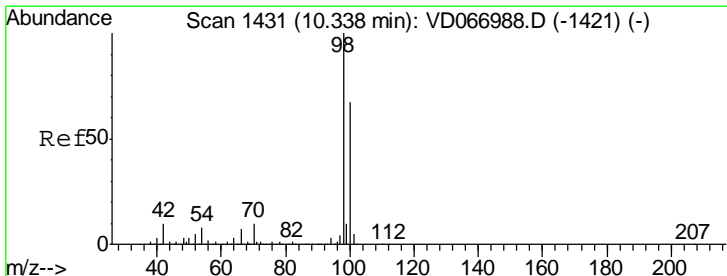
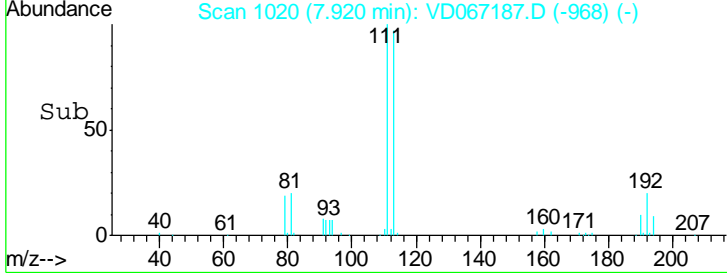
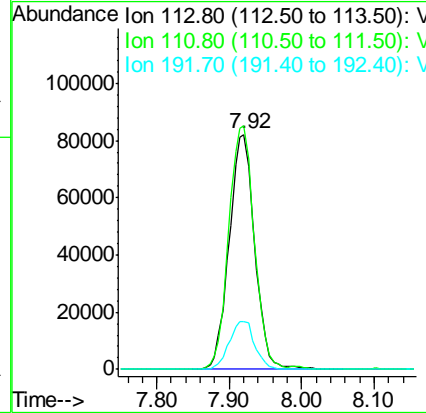
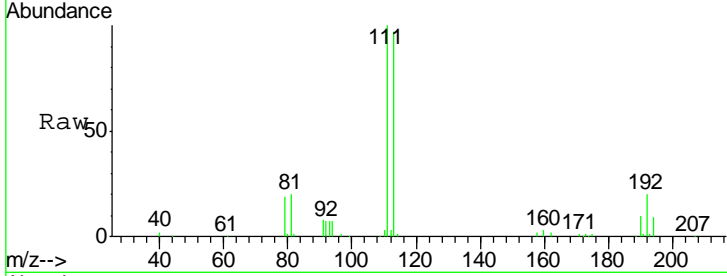




#35
 Dibromofluoromethane
 Concen: 48.497 ug/l
 RT: 7.92 min Scan# 1020
 Delta R.T. 0.01 min
 Lab File: VD067187.D
 Acq: 08 Oct 2020 11:52

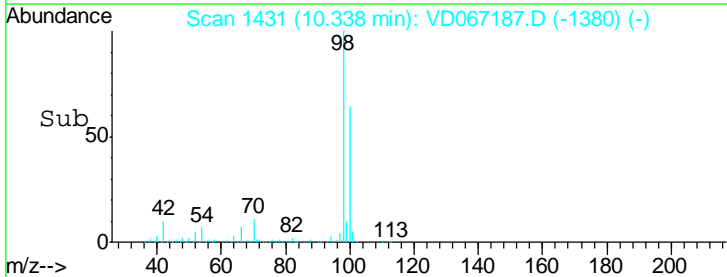
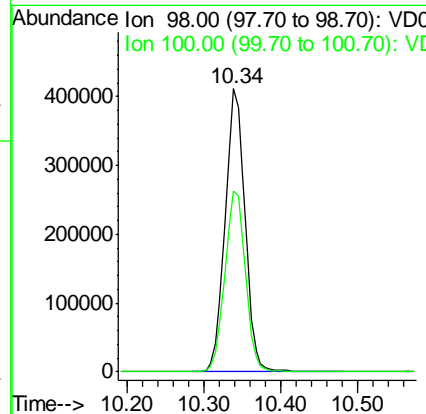
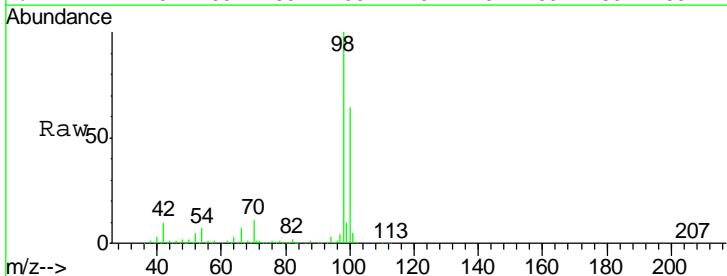
Instrument :
 MSVOA_D
ClientSampled :
 IDW-20201006

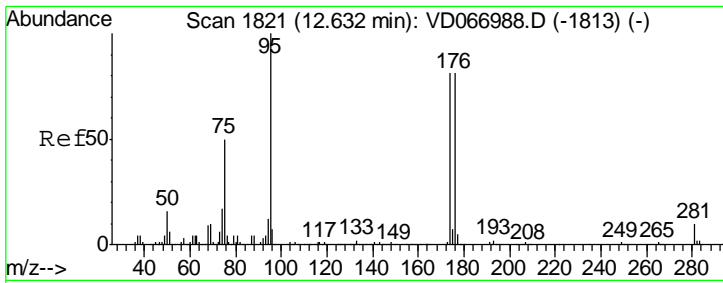
Tgt Ion	Resp	Lower	Upper
113	200772		
111	103.6	83.0	124.4
192	20.3	15.5	23.3



#50
 Toluene-d8
 Concen: 49.025 ug/l
 RT: 10.34 min Scan# 1431
 Delta R.T. 0.00 min
 Lab File: VD067187.D
 Acq: 08 Oct 2020 11:52

Tgt Ion	Resp	Lower	Upper
98	739561		
100	65.8	52.8	79.2

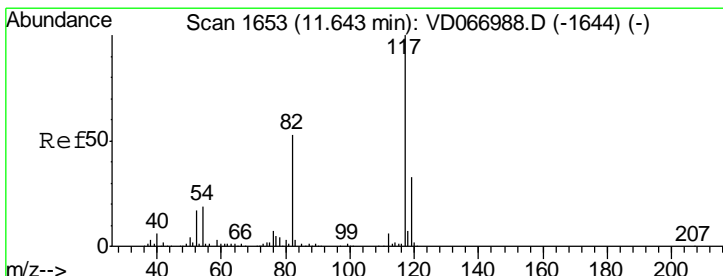
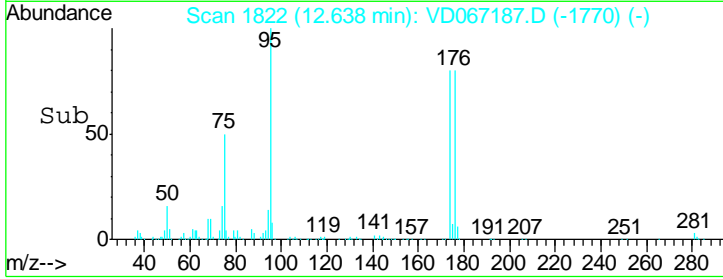
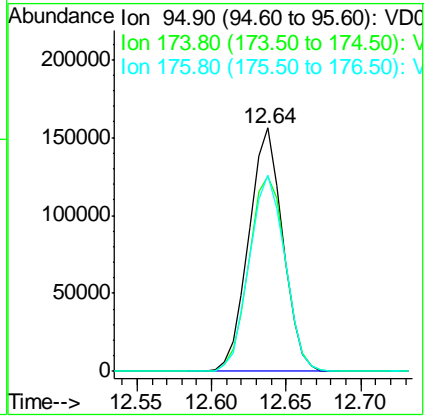
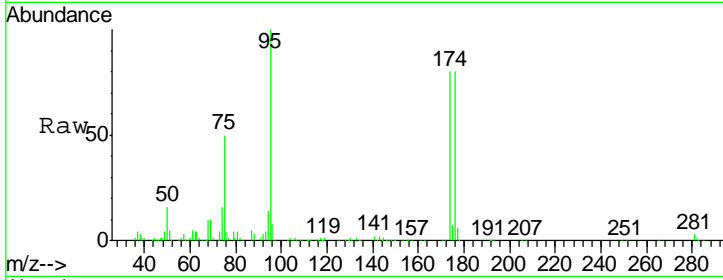




#62
 4-Bromofluorobenzene
 Concen: 48.148 ug/l
 RT: 12.64 min Scan# 1822
 Delta R.T. 0.01 min
 Lab File: VD067187.D
 Acq: 08 Oct 2020 11:52

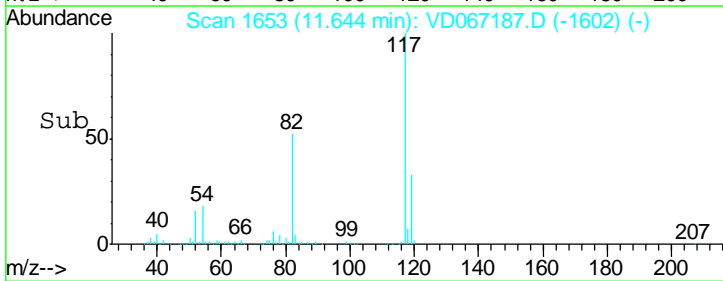
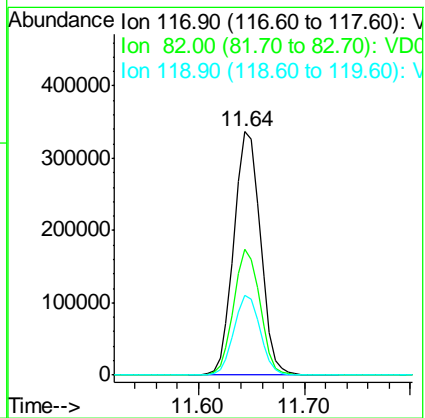
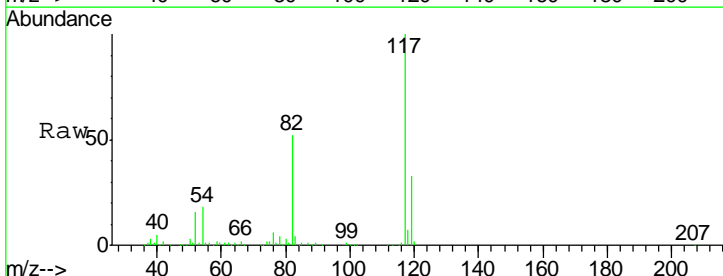
Instrument : MSVOA_D
 ClientSampleID : IDW-20201006

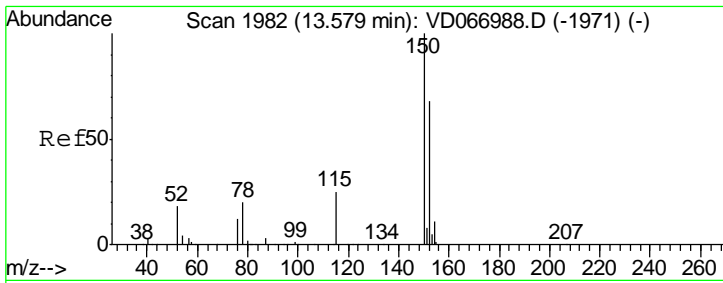
Tgt Ion	Resp	Lower	Upper
95	100		
174	86.1	0.0	167.6
176	84.3	0.0	162.4



#63
 Chlorobenzene-d5
 Concen: 50.000 ug/l
 RT: 11.64 min Scan# 1653
 Delta R.T. 0.00 min
 Lab File: VD067187.D
 Acq: 08 Oct 2020 11:52

Tgt Ion	Resp	Lower	Upper
117	100		
82	51.5	42.6	63.8
119	32.6	26.3	39.5

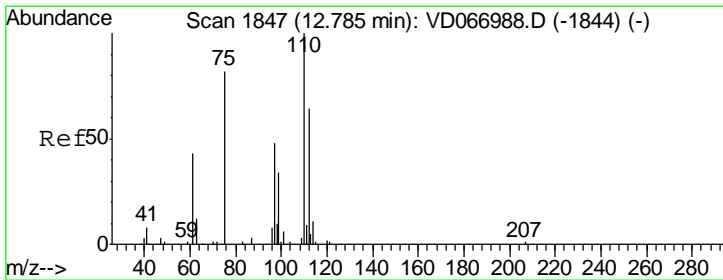
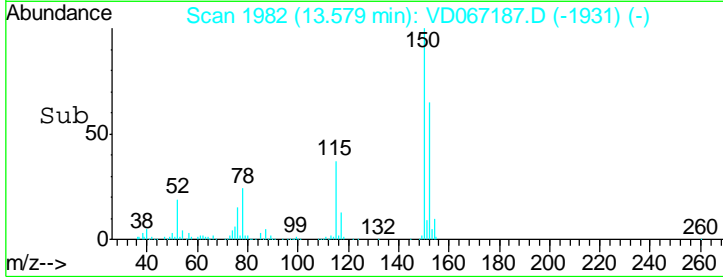
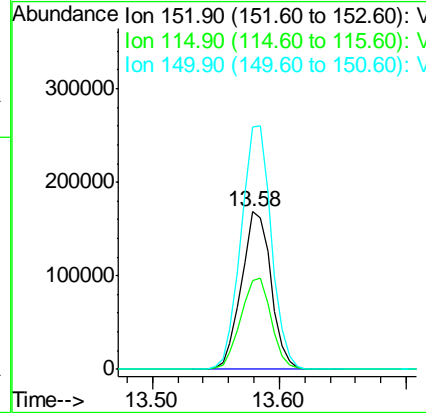
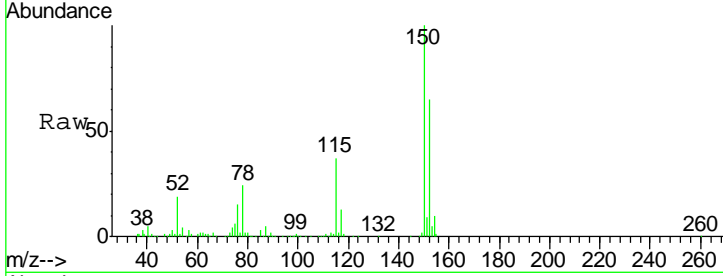




#72
 1,4-Dichlorobenzene-d4
 Concen: 50.000 ug/l
 RT: 13.58 min Scan# 1982
 Delta R.T. 0.00 min
 Lab File: VD067187.D
 Acq: 08 Oct 2020 11:52

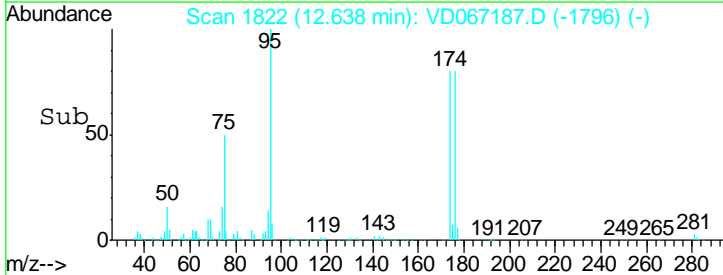
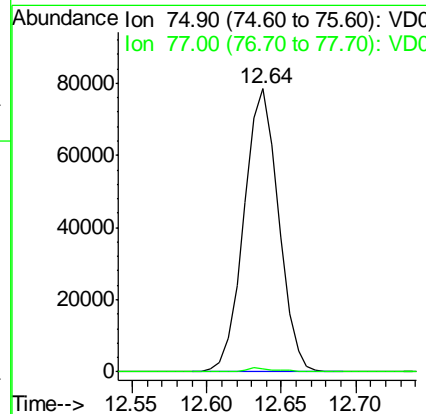
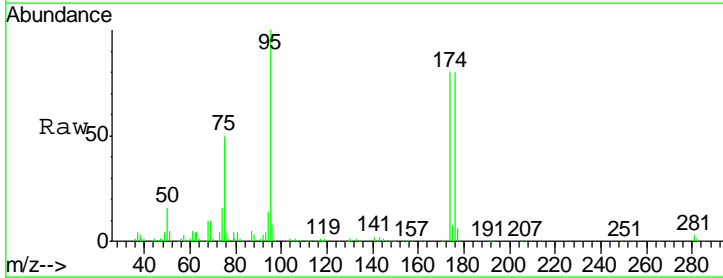
Instrument : MSVOA_D
 ClientSampleID : IDW-20201006

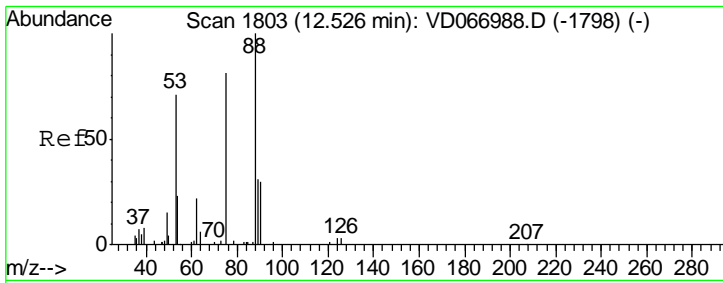
Tgt Ion	Resp	Lower	Upper
152	100		
115	59.5	29.6	88.8
150	157.9	0.0	344.8



#76
 1,2,3-Trichloropropane
 Concen: 53.132 ug/l
 RT: 12.64 min Scan# 1822
 Delta R.T. -0.15 min
 Lab File: VD067187.D
 Acq: 08 Oct 2020 11:52

Tgt Ion	Resp	Lower	Upper
75	100		
77	1.1	0.0	0.0#

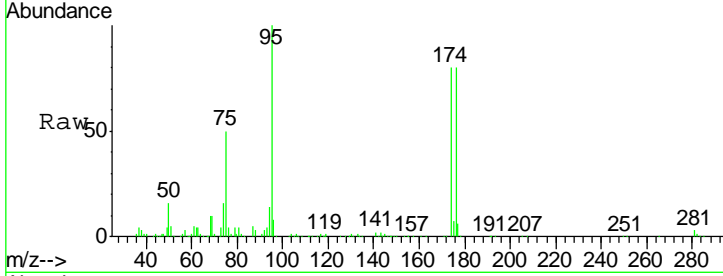




#81
 trans-1,4-Dichloro-2-butene
 Concen: 132.465 ug/l
 RT: 12.64 min Scan# 1822
 Delta R.T. 0.11 min
 Lab File: VD067187.D
 Acq: 08 Oct 2020 11:52

Instrument :
 MSVOA_D
 ClientSampleID :
 IDW-20201006

Tgt Ion	Resp	Lower	Upper
75	100		
53	0.0	73.8	110.6#
89	0.0	38.9	58.3#



Abundance Ion 74.90 (74.60 to 75.60): VDC
 Ion 53.00 (52.70 to 53.70): VDC
 Ion 88.90 (88.60 to 89.60): VDC

