

Data Path : Z:\VOASRV\HPCHEM1\MSVOA D\DATA\VD100820\  
 Data File : VD067196.D  
 Acq On : 08 Oct 2020 15:59  
 Operator : VA/SY  
 Sample : L4300-01  
 Misc : 5.00G/5.00ml/MSVOA D/SOIL  
 ALS Vial : 15 Sample Multiplier: 1

Instrument :  
 MSVOA\_D  
 ClientSampleId :  
 231-232-COMP

Quant Time: Oct 09 03:05:05 2020  
 Quant Method : Z:\VOASRV\HPCHEM1\MSVOA\_D\METHOD\82D100120S.M  
 Quant Title : SW846 8260  
 QLast Update : Thu Oct 01 15:19:17 2020  
 Response via : Initial Calibration

| Internal Standards         | R.T.  | QIon | Response | Conc  | Units | Dev(Min) |
|----------------------------|-------|------|----------|-------|-------|----------|
| 1) Pentafluorobenzene      | 7.99  | 168  | 362204   | 50.00 | ug/l  | 0.00     |
| 34) 1,4-Difluorobenzene    | 8.87  | 114  | 582437   | 50.00 | ug/l  | 0.00     |
| 63) Chlorobenzene-d5       | 11.64 | 117  | 535624   | 50.00 | ug/l  | 0.00     |
| 72) 1,4-Dichlorobenzene-d4 | 13.58 | 152  | 231861   | 50.00 | ug/l  | 0.00     |

## System Monitoring Compounds

|                           |        |     |          |       |         |      |
|---------------------------|--------|-----|----------|-------|---------|------|
| 33) 1,2-Dichloroethane-d4 | 8.34   | 65  | 179076   | 51.33 | ug/l    | 0.00 |
| Spiked Amount             | 50.000 |     | Recovery | =     | 102.66% |      |
| 35) Dibromofluoromethane  | 7.91   | 113 | 188371   | 49.40 | ug/l    | 0.00 |
| Spiked Amount             | 50.000 |     | Recovery | =     | 98.80%  |      |
| 50) Toluene-d8            | 10.34  | 98  | 681899   | 49.08 | ug/l    | 0.00 |
| Spiked Amount             | 50.000 |     | Recovery | =     | 98.16%  |      |
| 62) 4-Bromofluorobenzene  | 12.64  | 95  | 220813   | 46.81 | ug/l    | 0.00 |
| Spiked Amount             | 50.000 |     | Recovery | =     | 93.62%  |      |

## Target Compounds

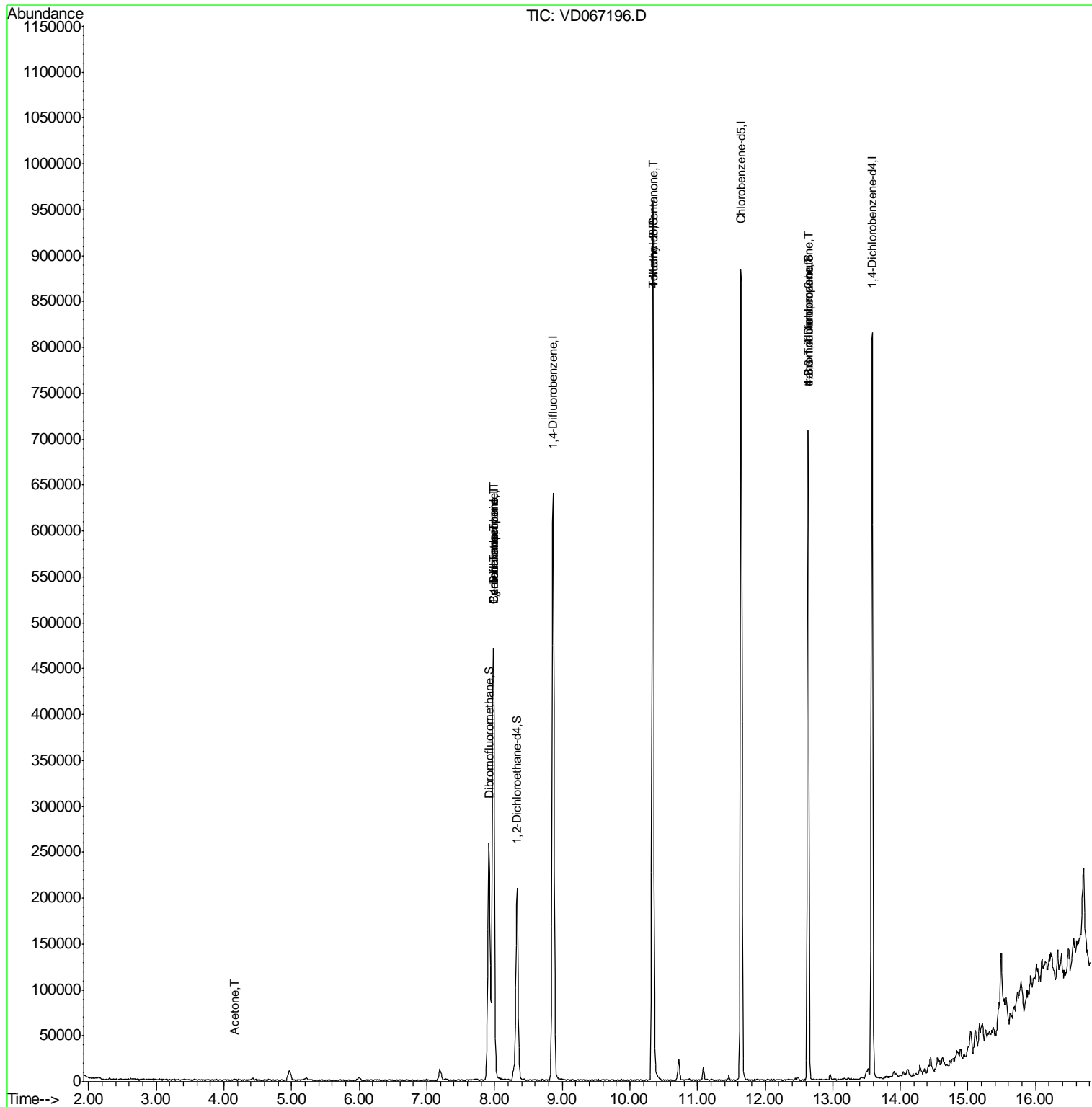
|                                |       |     |        |              | Qvalue |
|--------------------------------|-------|-----|--------|--------------|--------|
| 2) Dichlorodifluoromethane     | 1.99  | 85  | 351    | Below Cal    | # 40   |
| 5) Bromomethane                | 2.77  | 94  | 64     | Below Cal    | # 3    |
| 11) Tert butyl alcohol         | 5.22  | 59  | 4036   | Below Cal    | # 81   |
| 16) Acetone                    | 4.16  | 43  | 785    | 1.474 ug/l   | # 42   |
| 20) Methylene Chloride         | 4.96  | 84  | 3576   | Below Cal    | # 83   |
| 26) 2,2-Dichloropropane        | 7.19  | 77  | 434    | Below Cal    | # 53   |
| 31) Cyclohexane                | 7.99  | 56  | 7158   | 1.366 ug/l   | # 6    |
| 36) 1,1-Dichloropropene        | 7.99  | 75  | 26078  | 4.803 ug/l   | # 52   |
| 38) Carbon Tetrachloride       | 7.98  | 117 | 36162  | 6.156 ug/l   | # 15   |
| 51) 4-Methyl-2-Pentanone       | 10.34 | 43  | 2717   | 1.574 ug/l   | # 1    |
| 76) 1,2,3-Trichloropropane     | 12.64 | 75  | 111120 | 55.021 ug/l  | # 100  |
| 81) trans-1,4-Dichloro-2-buten | 12.64 | 75  | 111120 | 137.175 ug/l | # 12   |

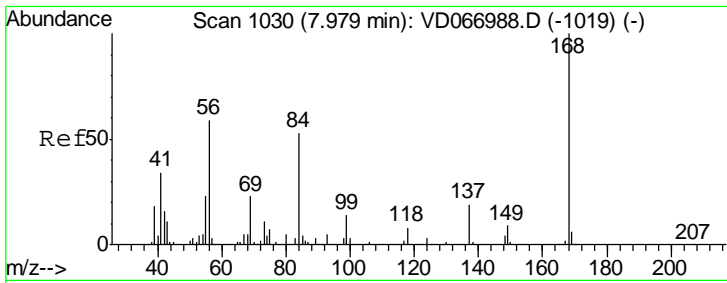
(#) = qualifier out of range (m) = manual integration (+) = signals summed

Data Path : Z:\VOASRV\HPCHEM1\MSVOA D\DATA\VD100820\  
 Data File : VD067196.D  
 Acq On : 08 Oct 2020 15:59  
 Operator : VA/SY  
 Sample : L4300-01  
 Misc : 5.00G/5.00ml/MSVOA D/SOIL  
 ALS Vial : 15 Sample Multiplier: 1

Instrument :  
 MSVOA\_D  
 Client Sampled :  
 231-232-COMP

Quant Time: Oct 09 03:05:05 2020  
 Quant Method : Z:\VOASRV\HPCHEM1\MSVOA\_D\METHOD\82D100120S.M  
 Quant Title : SW846 8260  
 QLast Update : Thu Oct 01 15:19:17 2020  
 Response via : Initial Calibration

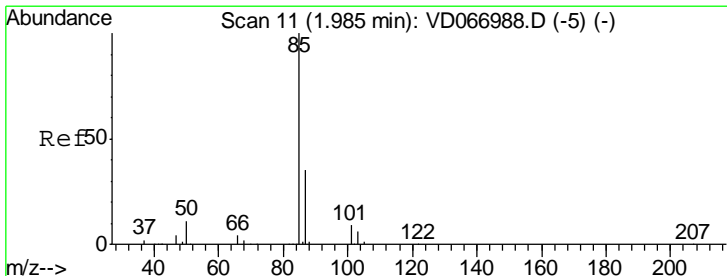
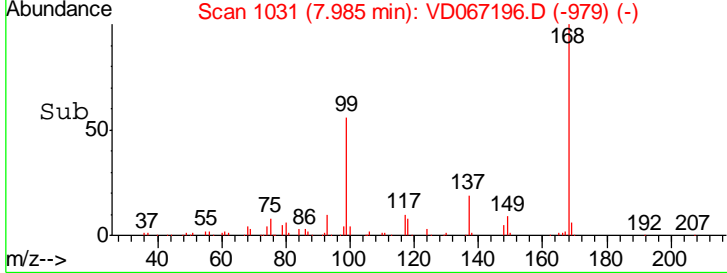
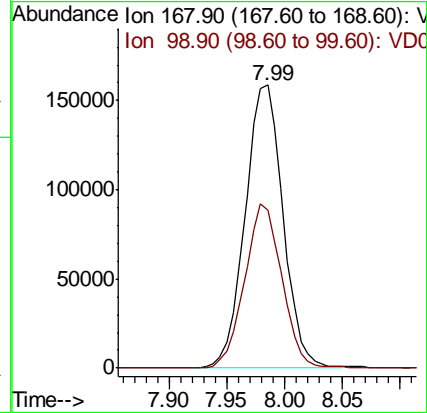
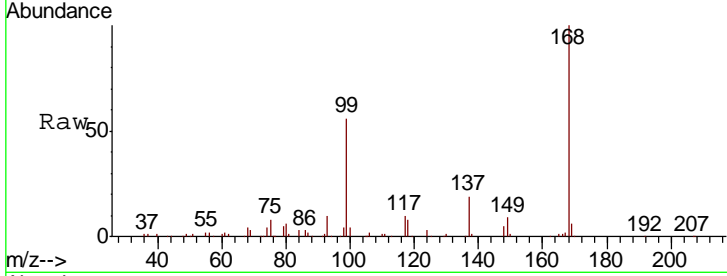




#1  
 Pentafluorobenzene  
 Concen: 50.000 ug/l  
 RT: 7.99 min Scan# 1031  
 Delta R.T. 0.01 min  
 Lab File: VD067196.D  
 Acq: 08 Oct 2020 15:59

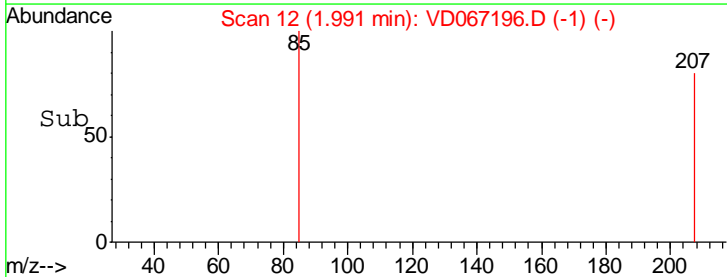
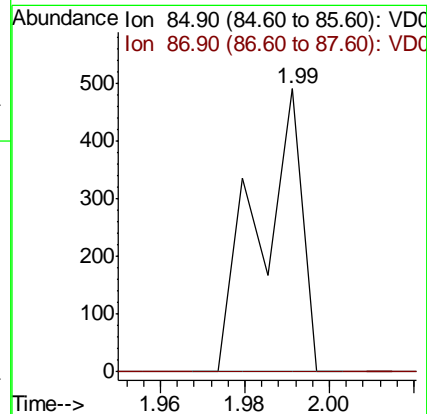
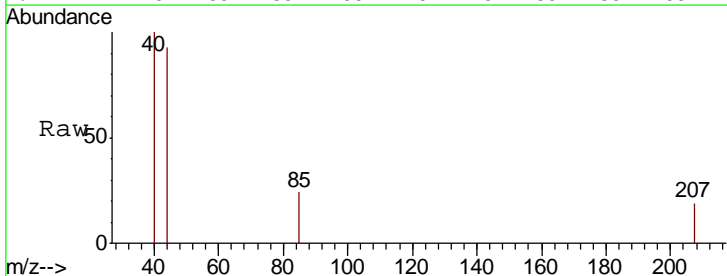
Instrument :  
 MSVOA\_D  
 ClientSampled :  
 231-232-COMP

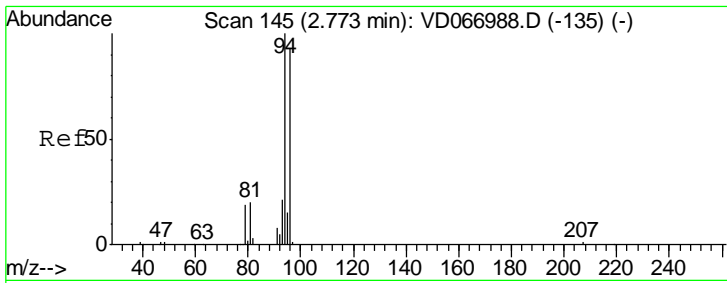
Tgt Ion: 168 Resp: 362204  
 Ion Ratio Lower Upper  
 168 100  
 99 55.8 44.1 66.1



#2  
 Dichlorodifluoromethane  
 Concen: Below Cal  
 RT: 1.99 min Scan# 12  
 Delta R.T. 0.01 min  
 Lab File: VD067196.D  
 Acq: 08 Oct 2020 15:59

Tgt Ion: 85 Resp: 351  
 Ion Ratio Lower Upper  
 85 100  
 87 0.0 17.3 52.0#

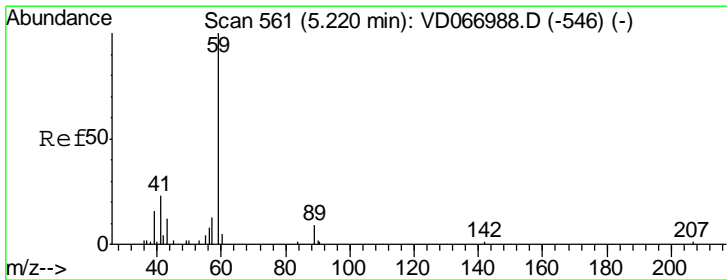
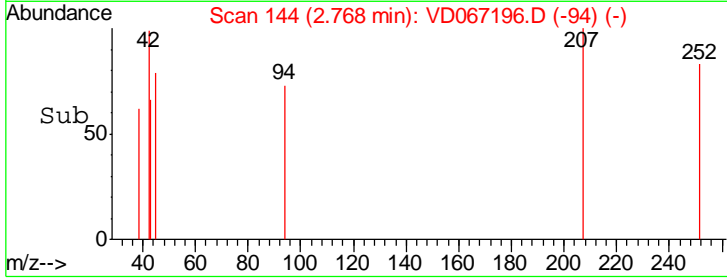
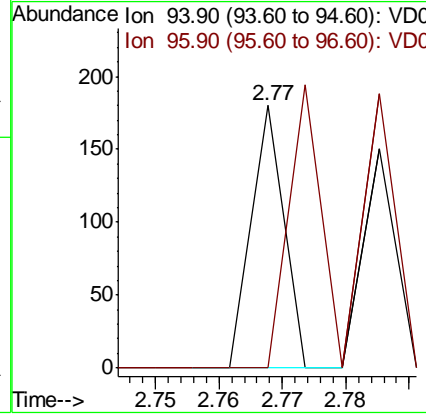
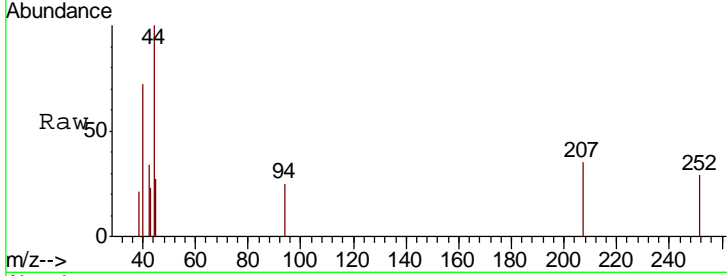




#5  
 Bromomethane  
 Concen: Below Cal  
 RT: 2.77 min Scan# 144  
 Delta R.T. -0.01 min  
 Lab File: VD067196.D  
 Acq: 08 Oct 2020 15:59

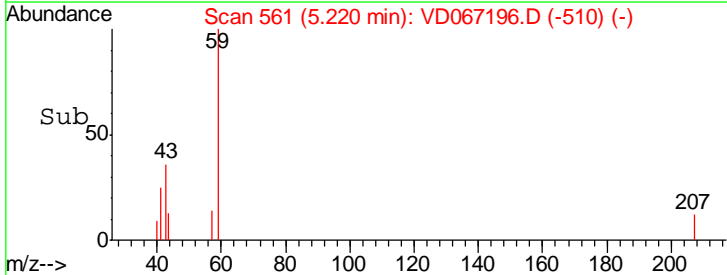
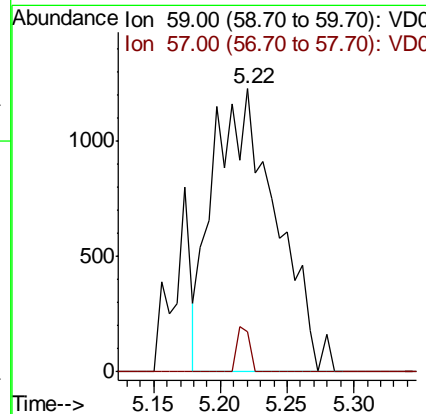
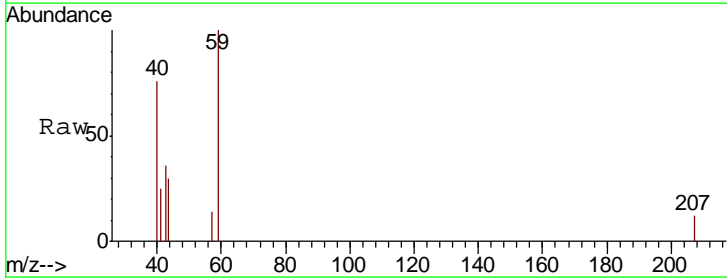
Instrument :  
 MSVOA\_D  
 ClientSampled :  
 231-232-COMP

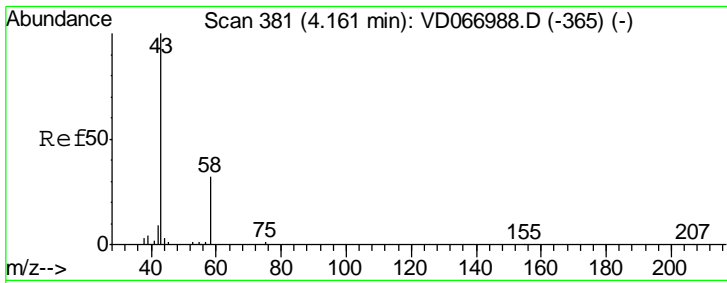
Tgt Ion: 94 Resp: 64  
 Ion Ratio Lower Upper  
 94 100  
 96 0.0 74.6 112.0#



#11  
 Tert butyl alcohol  
 Concen: Below Cal  
 RT: 5.22 min Scan# 561  
 Delta R.T. 0.00 min  
 Lab File: VD067196.D  
 Acq: 08 Oct 2020 15:59

Tgt Ion: 59 Resp: 4036  
 Ion Ratio Lower Upper  
 59 100  
 57 3.2 8.2 12.4#

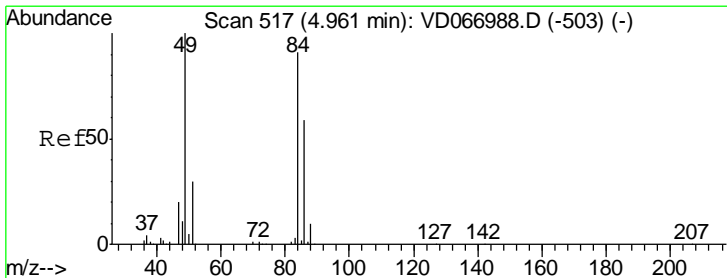
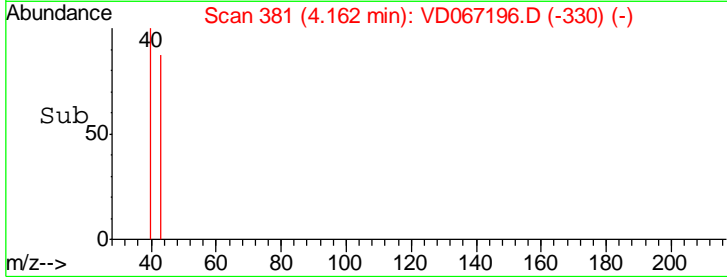
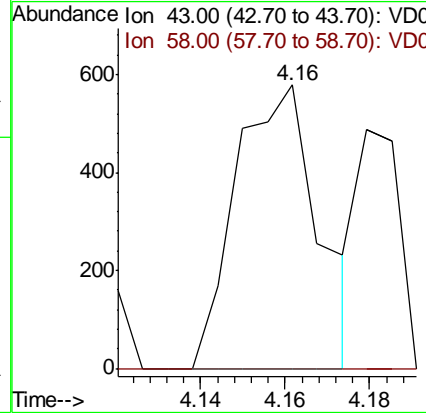
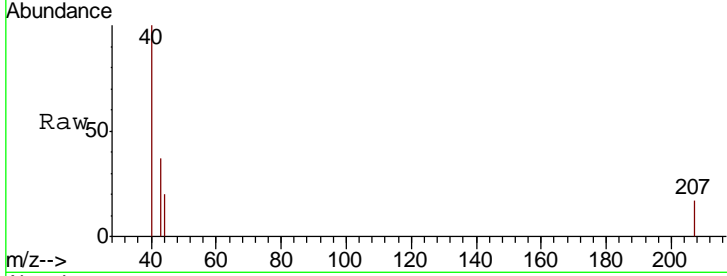




#16  
 Acetone  
 Concen: 1.474 ug/l  
 RT: 4.16 min Scan# 381  
 Delta R.T. 0.00 min  
 Lab File: VD067196.D  
 Acq: 08 Oct 2020 15:59

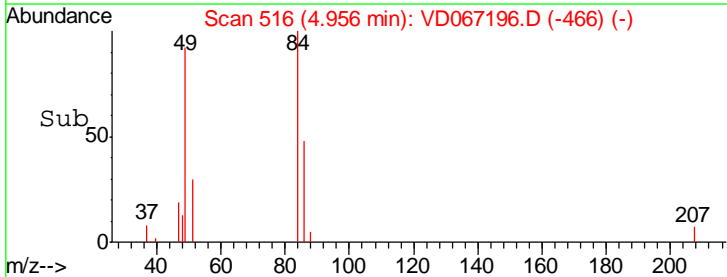
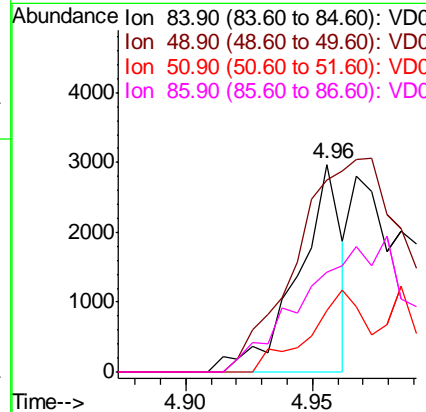
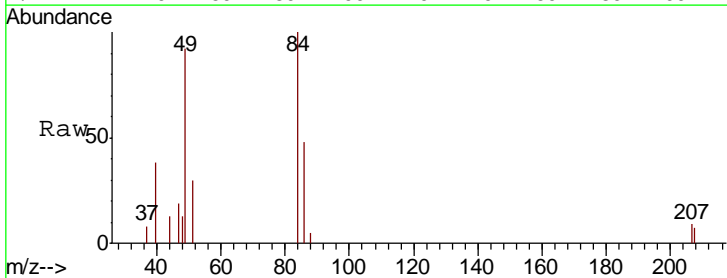
Instrument :  
 MSVOA\_D  
 ClientSampleId :  
 231-232-COMP

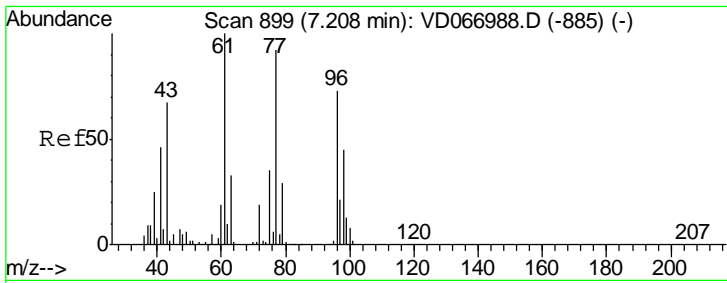
Tgt Ion: 43 Resp: 785  
 Ion Ratio Lower Upper  
 43 100  
 58 0.0 25.9 38.9#



#20  
 Methylene Chloride  
 Concen: Below Cal  
 RT: 4.96 min Scan# 516  
 Delta R.T. -0.01 min  
 Lab File: VD067196.D  
 Acq: 08 Oct 2020 15:59

Tgt Ion: 84 Resp: 3576  
 Ion Ratio Lower Upper  
 84 100  
 49 92.4 88.2 132.2  
 51 29.8 26.6 39.8  
 86 48.0 52.1 78.1#

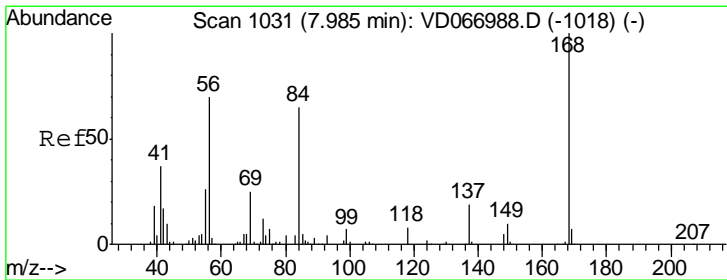
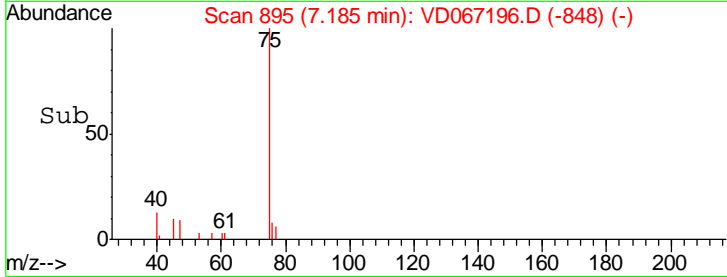
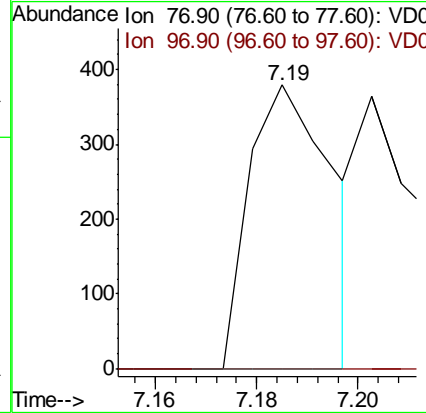
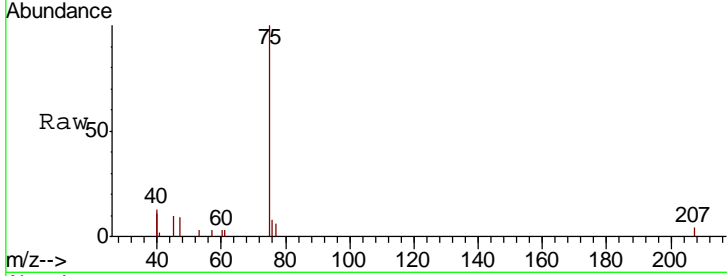




#26  
 2,2-Dichloropropane  
 Concen: Below Cal  
 RT: 7.19 min Scan# 895  
 Delta R.T. -0.02 min  
 Lab File: VD067196.D  
 Acq: 08 Oct 2020 15:59

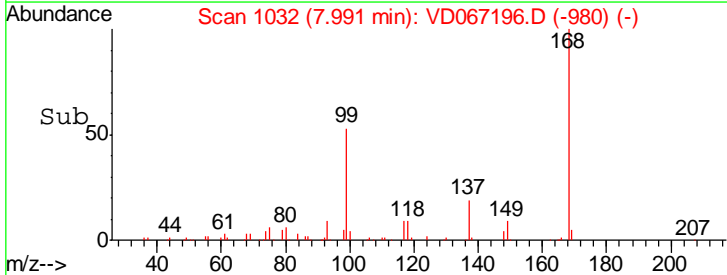
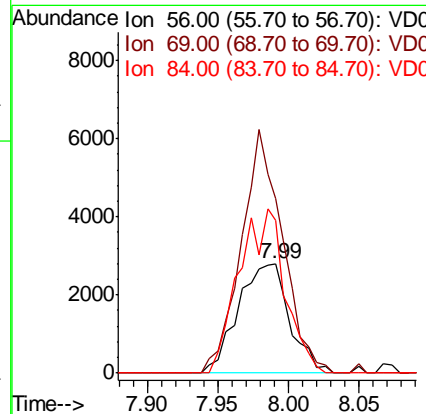
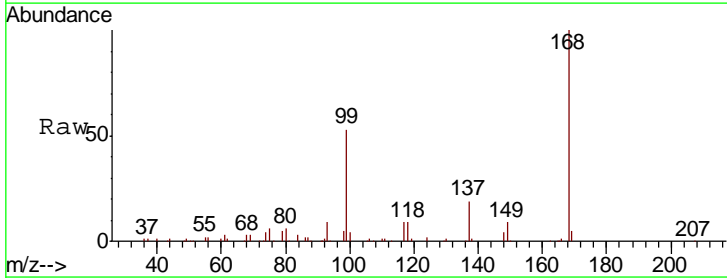
Instrument :  
 MSVOA\_D  
 ClientSampled :  
 231-232-COMP

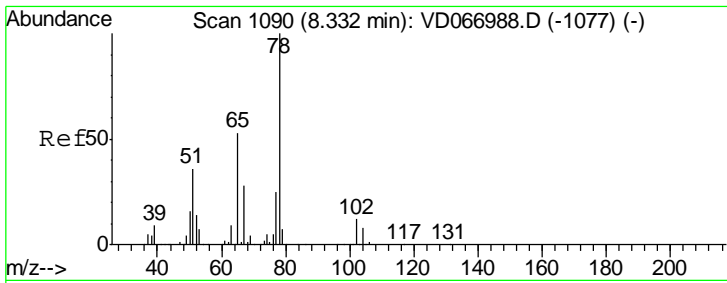
Tgt Ion: 77 Resp: 434  
 Ion Ratio Lower Upper  
 77 100  
 97 0.0 11.4 34.2#



#31  
 Cyclohexane  
 Concen: 1.366 ug/l  
 RT: 7.99 min Scan# 1032  
 Delta R.T. 0.01 min  
 Lab File: VD067196.D  
 Acq: 08 Oct 2020 15:59

Tgt Ion: 56 Resp: 7158  
 Ion Ratio Lower Upper  
 56 100  
 69 159.1 29.0 43.6#  
 84 139.9 74.2 111.2#

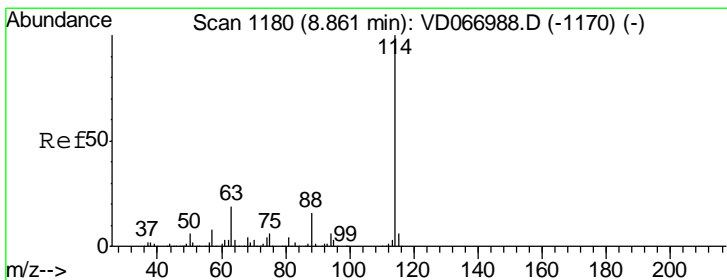
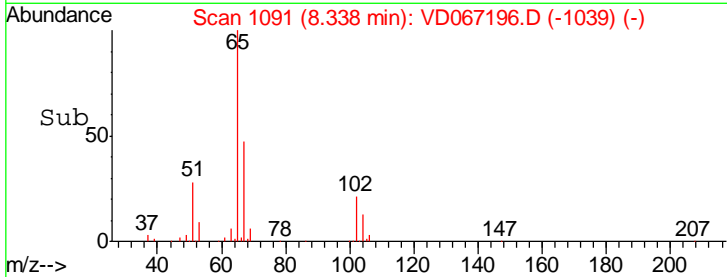
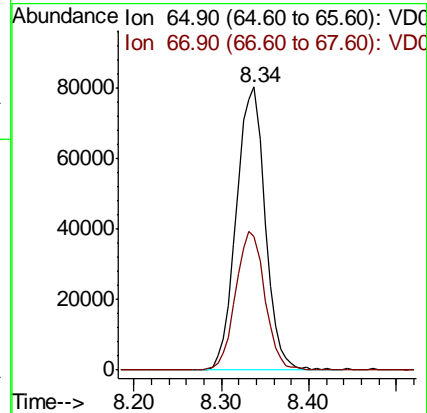
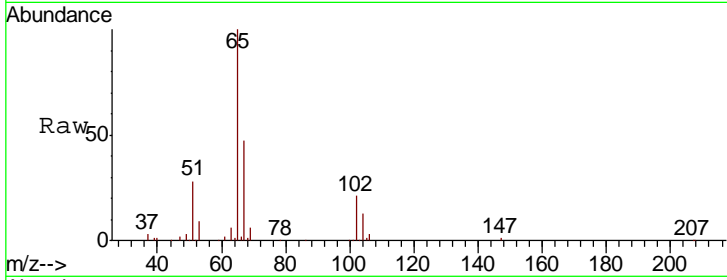




#33  
 1,2-Dichloroethane-d4  
 Concen: 51.330 ug/l  
 RT: 8.34 min Scan# 1091  
 Delta R.T. 0.01 min  
 Lab File: VD067196.D  
 Acq: 08 Oct 2020 15:59

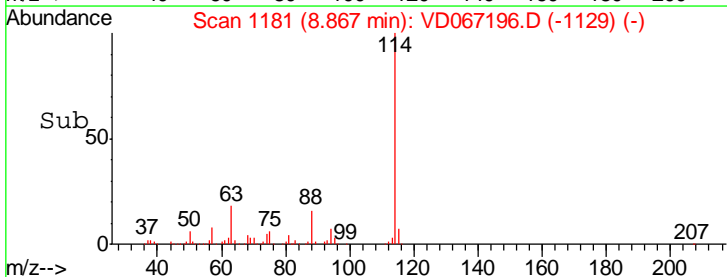
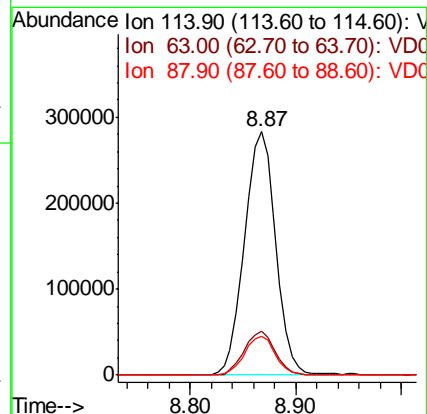
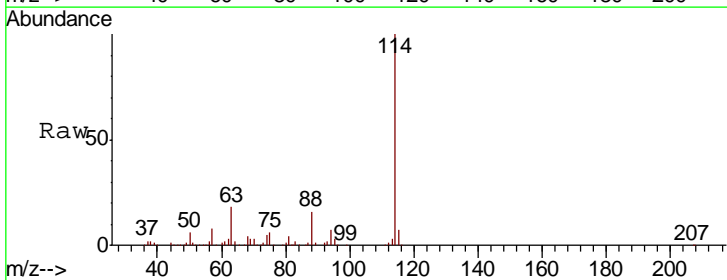
Instrument :  
 MSVOA\_D  
 ClientSampled :  
 231-232-COMP

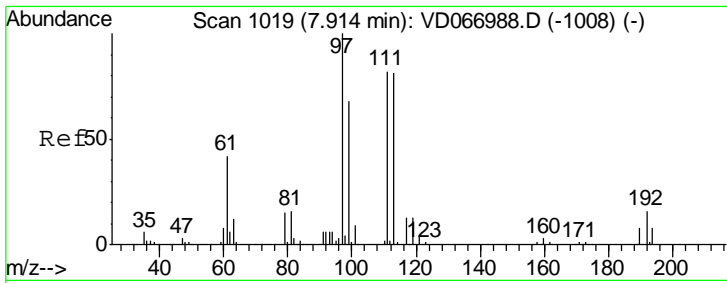
| Tgt Ion | Resp   | Lower | Upper |
|---------|--------|-------|-------|
| 65      | 179076 |       |       |
| 65      | 100    |       |       |
| 67      | 49.8   | 0.0   | 106.8 |



#34  
 1,4-Difluorobenzene  
 Concen: 50.000 ug/l  
 RT: 8.87 min Scan# 1181  
 Delta R.T. 0.01 min  
 Lab File: VD067196.D  
 Acq: 08 Oct 2020 15:59

| Tgt Ion | Resp   | Lower | Upper |
|---------|--------|-------|-------|
| 114     | 582437 |       |       |
| 114     | 100    |       |       |
| 63      | 18.0   | 0.0   | 38.4  |
| 88      | 16.1   | 0.0   | 31.2  |

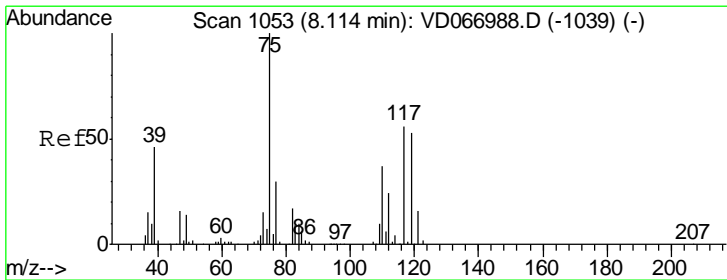
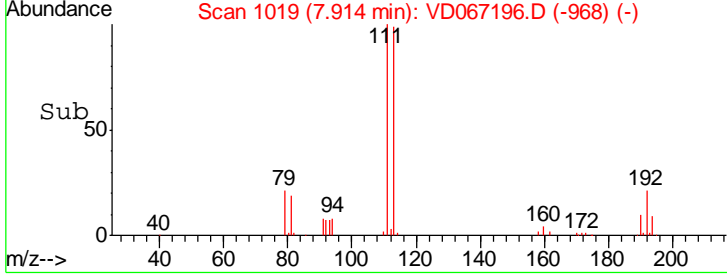
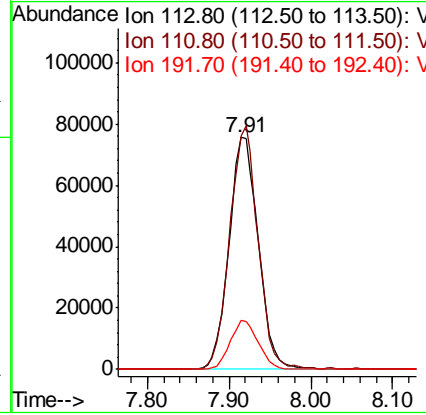
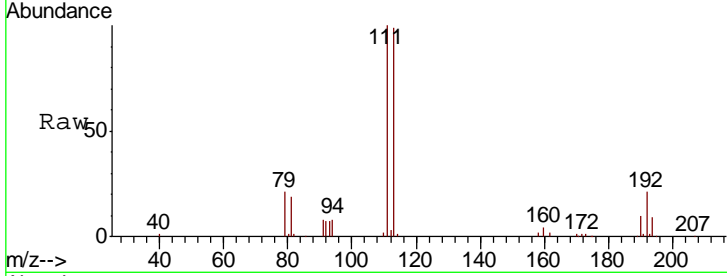




#35  
 Dibromofluoromethane  
 Concen: 49.401 ug/l  
 RT: 7.91 min Scan# 1019  
 Delta R.T. 0.00 min  
 Lab File: VD067196.D  
 Acq: 08 Oct 2020 15:59

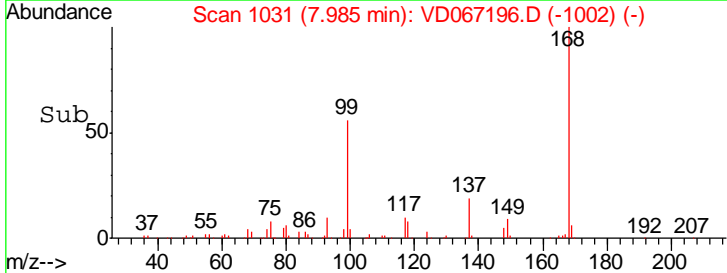
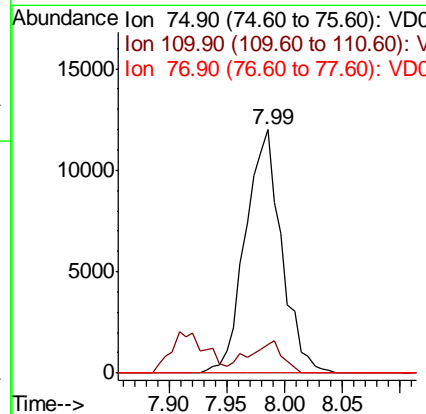
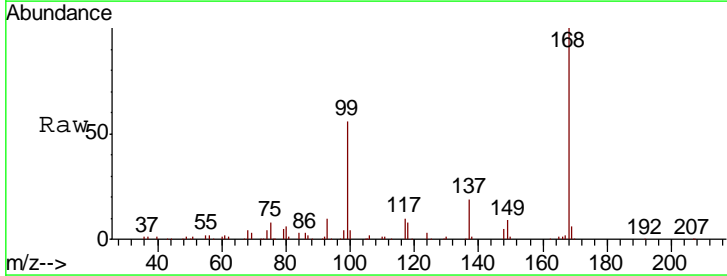
Instrument :  
 MSVOA\_D  
 ClientSampleID :  
 231-232-COMP

| Tgt Ion | Resp   | Lower | Upper |
|---------|--------|-------|-------|
| 113     | 188371 |       |       |
| 113     | 100    |       |       |
| 111     | 101.5  | 83.0  | 124.4 |
| 192     | 20.0   | 15.5  | 23.3  |

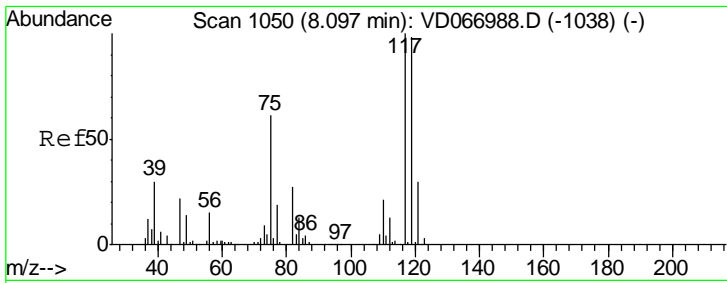


#36  
 1,1-Dichloropropene  
 Concen: 4.803 ug/l  
 RT: 7.99 min Scan# 1031  
 Delta R.T. -0.13 min  
 Lab File: VD067196.D  
 Acq: 08 Oct 2020 15:59

| Tgt Ion | Resp  | Lower | Upper |
|---------|-------|-------|-------|
| 75      | 26078 |       |       |
| 75      | 100   |       |       |
| 110     | 12.2  | 18.4  | 55.0# |
| 77      | 0.0   | 24.8  | 37.2# |



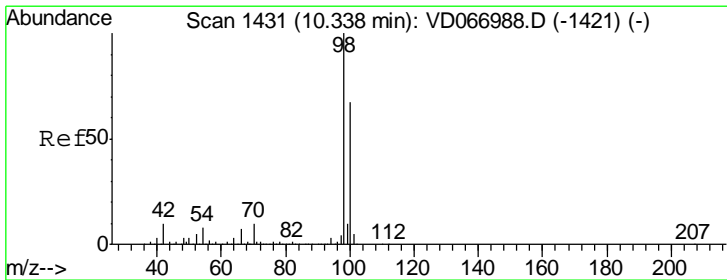
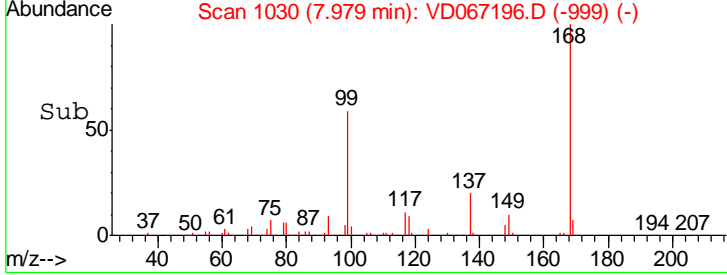
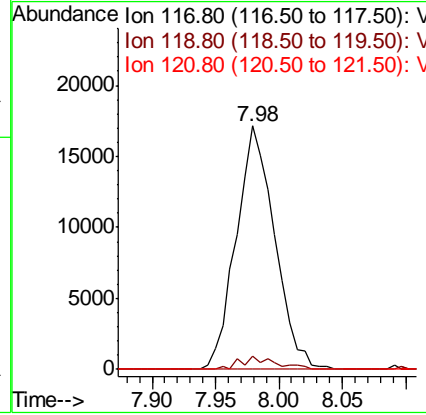
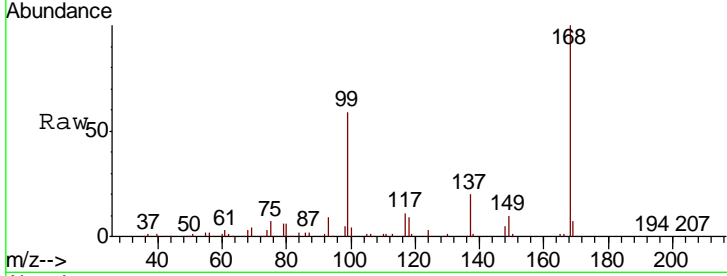




#38  
 Carbon Tetrachloride  
 Concen: 6.156 ug/l  
 RT: 7.98 min Scan# 1030  
 Delta R.T. -0.12 min  
 Lab File: VD067196.D  
 Acq: 08 Oct 2020 15:59

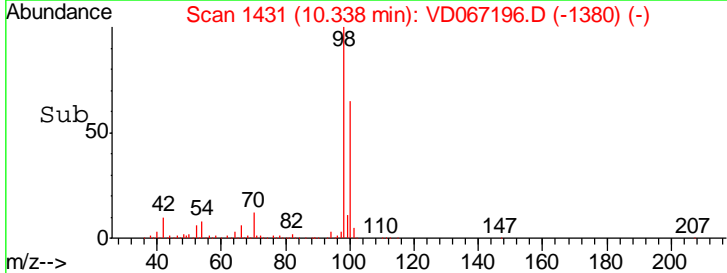
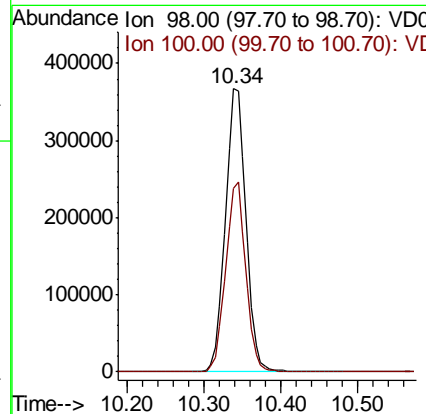
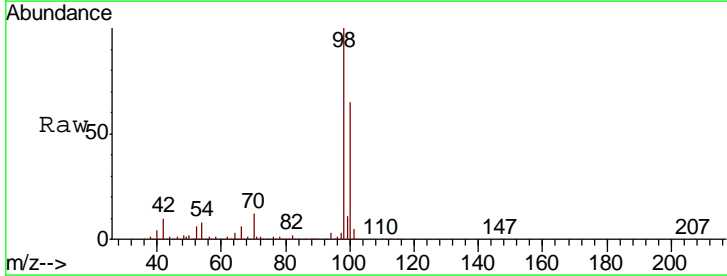
**Instrument :**  
 MSVOA\_D  
**ClientSampled :**  
 231-232-COMP

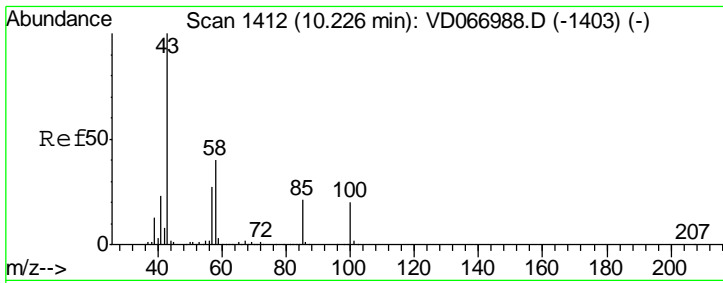
| Tgt Ion | Resp  | Lower | Upper  |
|---------|-------|-------|--------|
| 117     | 36162 |       |        |
| 119     | 5.2   | 78.7  | 118.1# |
| 121     | 0.0   | 24.2  | 36.2#  |



#50  
 Toluene-d8  
 Concen: 49.077 ug/l  
 RT: 10.34 min Scan# 1431  
 Delta R.T. 0.00 min  
 Lab File: VD067196.D  
 Acq: 08 Oct 2020 15:59

| Tgt Ion | Resp   | Lower | Upper |
|---------|--------|-------|-------|
| 98      | 681899 |       |       |
| 100     | 65.5   | 52.8  | 79.2  |

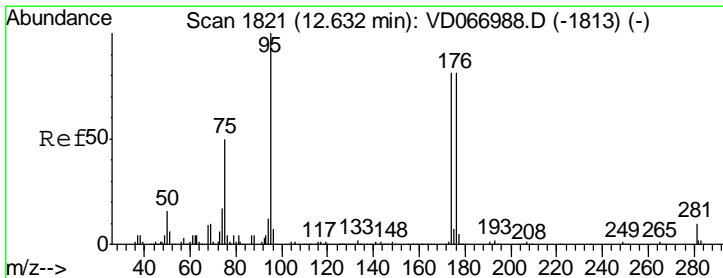
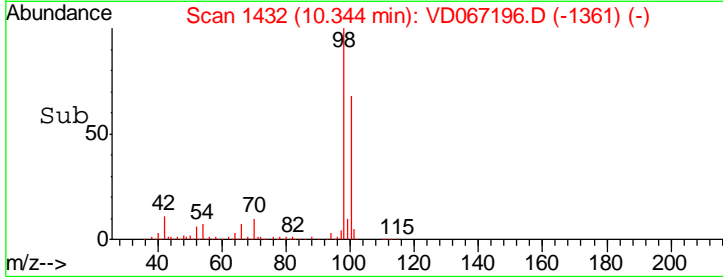
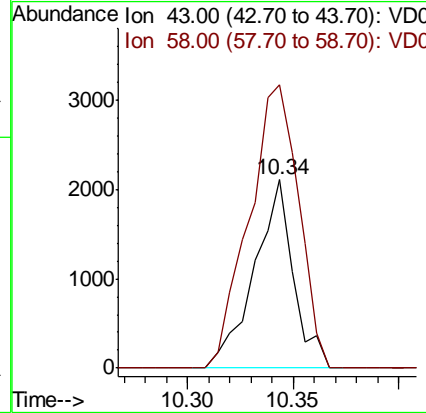
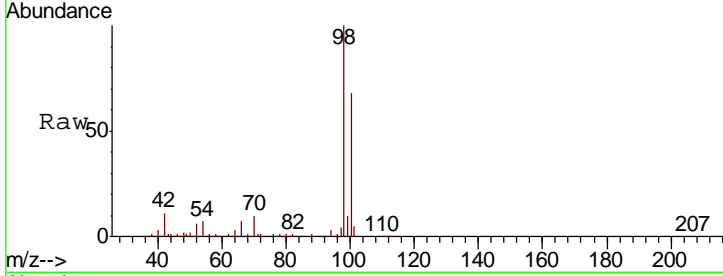




#51  
 4-Methyl-2-Pentanone  
 Concen: 1.574 ug/l  
 RT: 10.34 min Scan# 1432  
 Delta R.T. 0.12 min  
 Lab File: VD067196.D  
 Acq: 08 Oct 2020 15:59

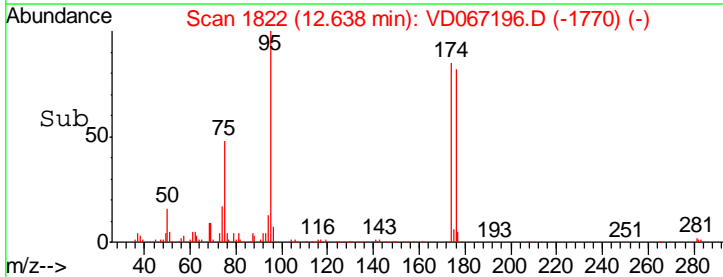
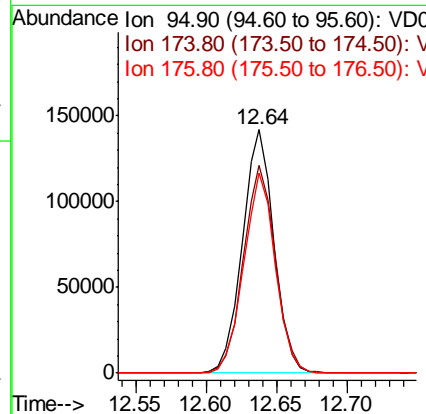
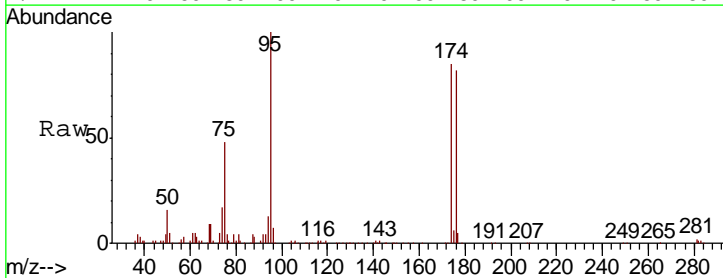
Instrument :  
 MSVOA\_D  
 ClientSampled :  
 231-232-COMP

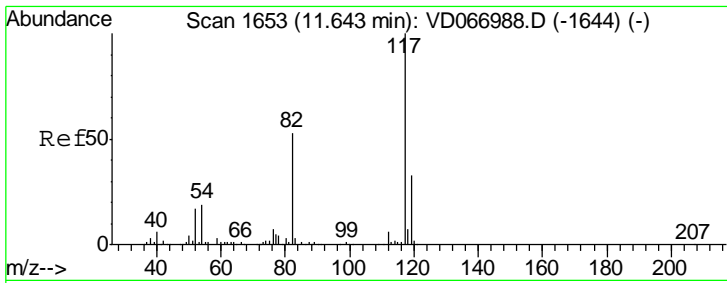
| Tgt Ion | Resp  | Lower | Upper |
|---------|-------|-------|-------|
| 43      | 100   |       |       |
| 58      | 191.2 | 33.8  | 50.8# |



#62  
 4-Bromofluorobenzene  
 Concen: 46.814 ug/l  
 RT: 12.64 min Scan# 1822  
 Delta R.T. 0.01 min  
 Lab File: VD067196.D  
 Acq: 08 Oct 2020 15:59

| Tgt Ion | Resp | Lower | Upper |
|---------|------|-------|-------|
| 95      | 100  |       |       |
| 174     | 87.1 | 0.0   | 167.6 |
| 176     | 82.7 | 0.0   | 162.4 |

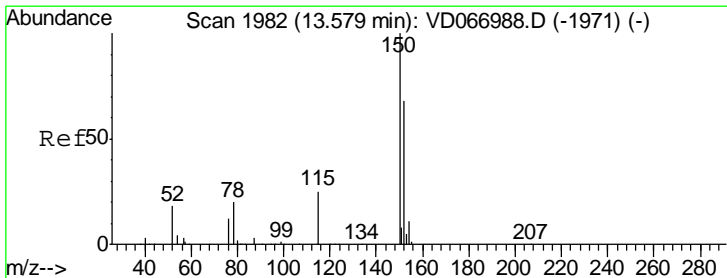
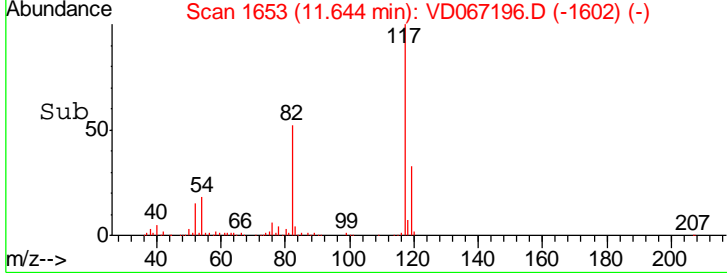
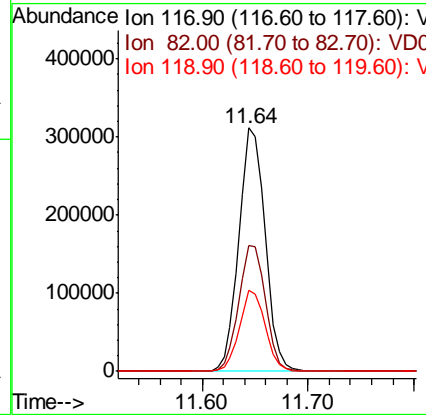
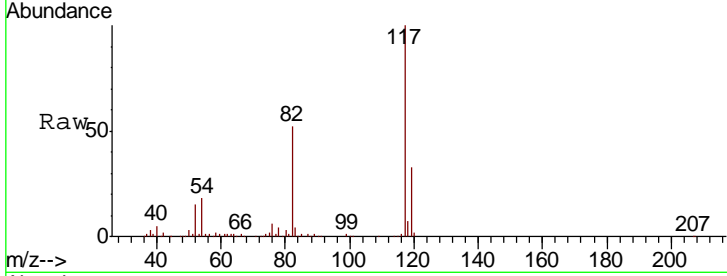




#63  
 Chlorobenzene-d5  
 Concen: 50.000 ug/l  
 RT: 11.64 min Scan# 1653  
 Delta R.T. 0.00 min  
 Lab File: VD067196.D  
 Acq: 08 Oct 2020 15:59

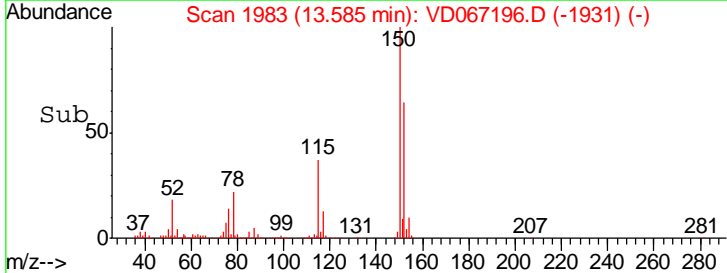
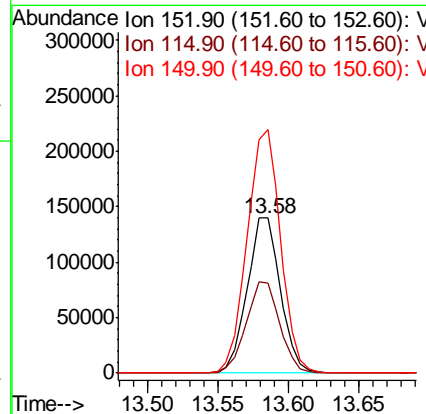
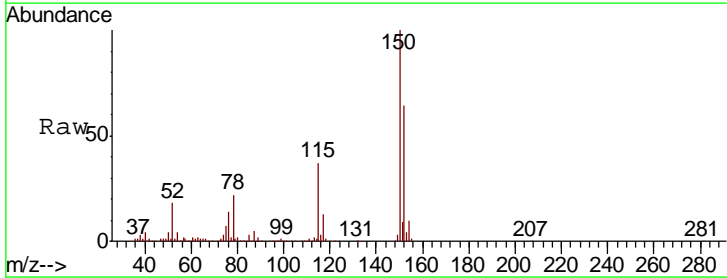
Instrument :  
 MSVOA\_D  
 ClientSampleId :  
 231-232-COMP

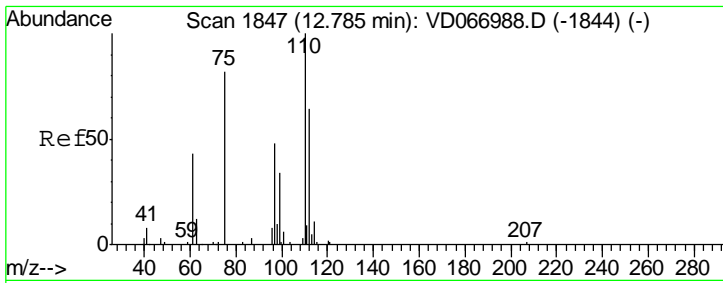
| Tgt Ion | Resp | Lower | Upper |
|---------|------|-------|-------|
| 117     | 100  |       |       |
| 82      | 51.6 | 42.6  | 63.8  |
| 119     | 33.2 | 26.3  | 39.5  |



#72  
 1,4-Dichlorobenzene-d4  
 Concen: 50.000 ug/l  
 RT: 13.58 min Scan# 1983  
 Delta R.T. 0.01 min  
 Lab File: VD067196.D  
 Acq: 08 Oct 2020 15:59

| Tgt Ion | Resp  | Lower | Upper |
|---------|-------|-------|-------|
| 152     | 100   |       |       |
| 115     | 59.1  | 29.6  | 88.8  |
| 150     | 157.2 | 0.0   | 344.8 |

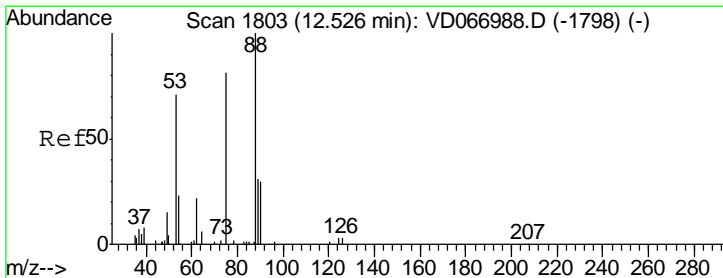
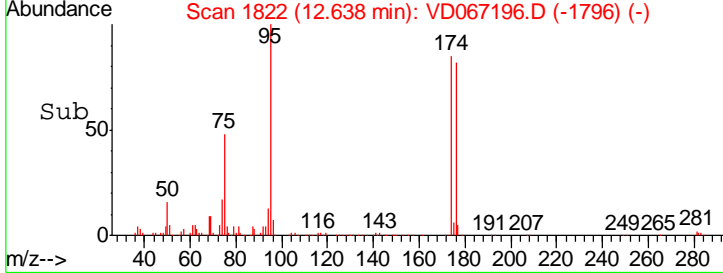
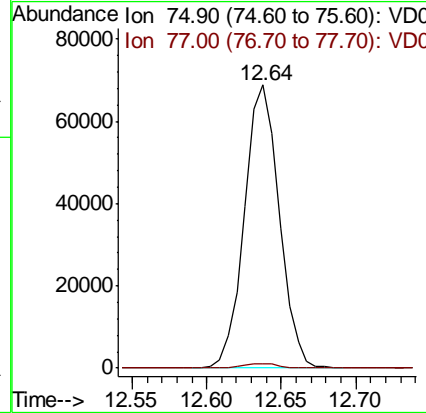
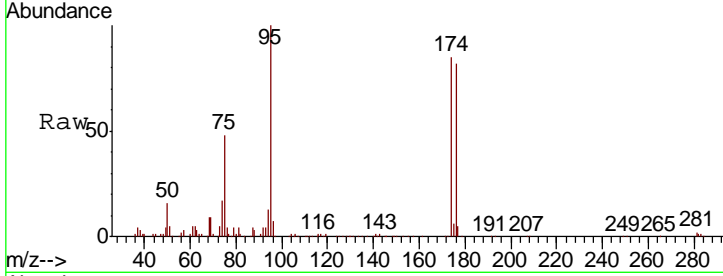




#76  
 1,2,3-Trichloropropane  
 Concen: 55.021 ug/l  
 RT: 12.64 min Scan# 1822  
 Delta R.T. -0.15 min  
 Lab File: VD067196.D  
 Acq: 08 Oct 2020 15:59

Instrument :  
 MSVOA\_D  
 ClientSampled :  
 231-232-COMP

| Tgt Ion | Resp | Lower | Upper |
|---------|------|-------|-------|
| 75      | 100  |       |       |
| 77      | 1.6  | 0.0   | 0.0#  |



#81  
 trans-1,4-Dichloro-2-butene  
 Concen: 137.175 ug/l  
 RT: 12.64 min Scan# 1822  
 Delta R.T. 0.11 min  
 Lab File: VD067196.D  
 Acq: 08 Oct 2020 15:59

| Tgt Ion | Resp | Lower | Upper  |
|---------|------|-------|--------|
| 75      | 100  |       |        |
| 53      | 0.2  | 73.8  | 110.6# |
| 89      | 0.0  | 38.9  | 58.3#  |

