

Data Path : Z:\VOASRV\HPCHEM1\MSVOA D\DATA\VD100918\
 Data File : VD060159.D
 Acq On : 9 Oct 2018 19:04
 Operator : VA/AP
 Sample : J5326-09
 Misc : 6.17g/5ml/MSVOA D/SOIL
 ALS Vial : 16 Sample Multiplier: 1

Instrument :
 MSVOA_D
 ClientSampleId :
 FL-PIT-3

Integration Parameters: RTEINT.P
 Integrator: RTE
 Smoothing : ON Filtering: 5
 Sampling : 1 Min Area: 3 % of largest Peak
 Start Thrs: 0.2 Max Peaks: 100
 Stop Thrs : 0 Peak Location: TOP

If leading or trailing edge < 100 prefer < Baseline drop else tangent >
 Peak separation: 5

Method : Z:\VOASRV\HPCHEM1\MSVOA_D\METHOD\82D100118S.M
 Title : SW846 8260

Signal : TIC

peak #	R.T. min	first scan	max scan	last scan	PK TY	peak height	corr. area	corr. % max.	% of total
1	1.819	27	30	35	rVB2	65708	102094	1.61%	0.285%
2	3.128	158	163	173	rBV	63085	186065	2.93%	0.519%
3	3.679	212	219	230	rBV	257292	692811	10.91%	1.932%
4	3.837	230	235	241	rVB	47432	152576	2.40%	0.426%
5	4.476	294	300	309	rVB2	27138	84513	1.33%	0.236%
6	5.628	407	417	431	rBV	575957	1789699	28.17%	4.992%
7	6.287	478	484	488	rBV	1117405	2727782	42.94%	7.608%
8	6.376	488	493	513	rVB	1344101	3594152	56.58%	10.025%
9	6.749	525	531	545	rBV	802460	2056899	32.38%	5.737%
10	7.409	593	598	618	rVB	1780017	4204125	66.18%	11.726%
11	9.426	798	803	819	rBV	2825575	6352382	100.00%	17.718%
12	10.174	873	879	886	rBV	81467	219503	3.46%	0.612%
13	11.266	986	990	1002	rBV	2840581	4515759	71.09%	12.595%
14	12.418	1103	1107	1116	rBV	2935296	4457565	70.17%	12.433%
15	12.556	1117	1121	1130	rVB	97496	168731	2.66%	0.471%
16	13.363	1199	1203	1217	rBV	3437206	4548718	71.61%	12.687%

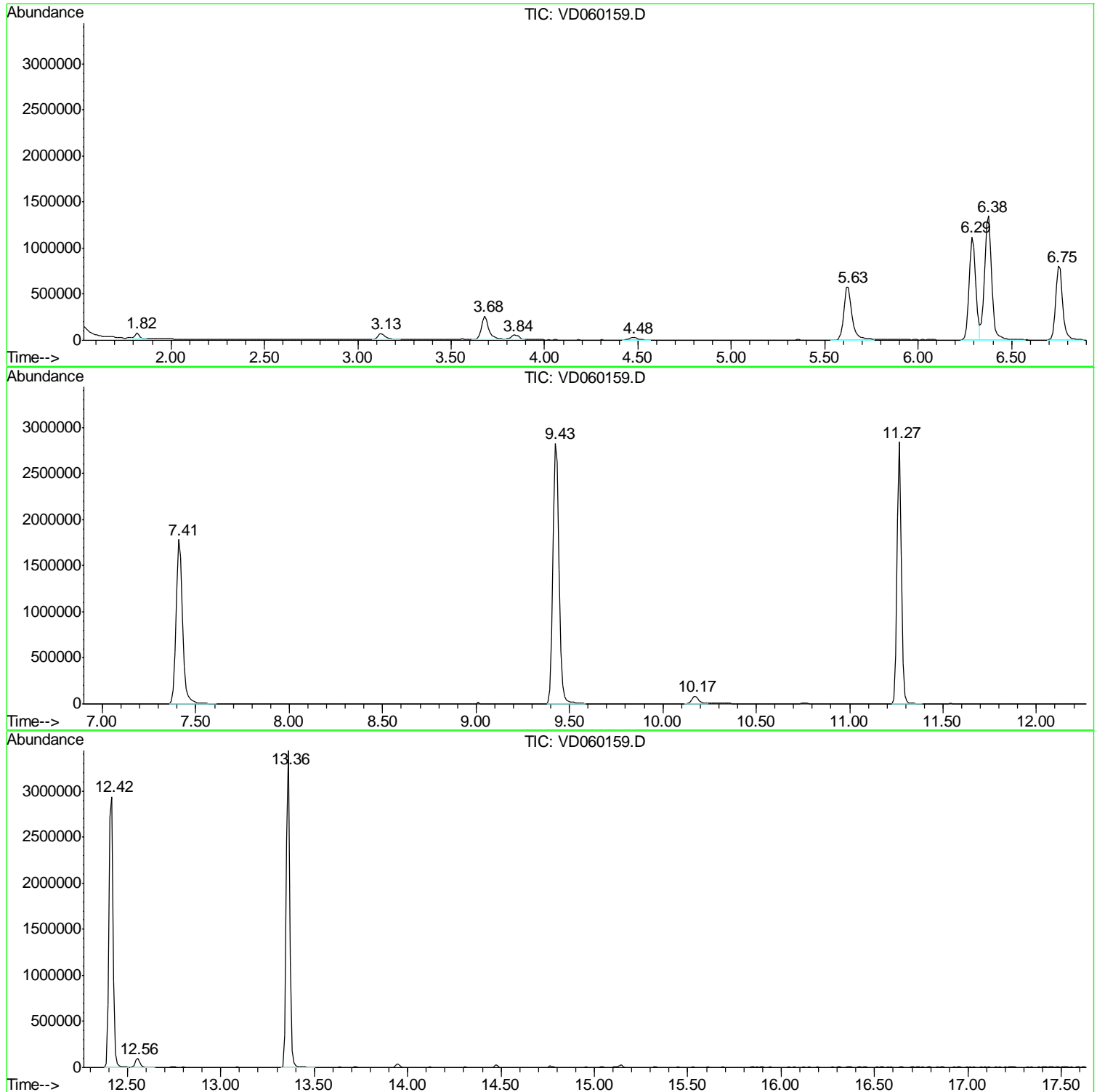
Sum of corrected areas: 35853374

Data Path : Z:\VOASRV\HPCHEM1\MSVOA D\DATA\VD100918\
Data File : VD060159.D
Acq On : 9 Oct 2018 19:04
Operator : VA/AP
Sample : J5326-09
Misc : 6.17µ/5ml/MSVOA D/SOIL
ALS Vial : 16 Sample Multiplier: 1

Instrument :
MSVOA_D
ClientSampled :
FL-PIT-3

Quant Method : Z:\VOASRV\HPCHEM1\MSVOA_D\METHOD\82D100118S.M
Quant Title : SW846 8260

TIC Library : C:\DATABASE\NIST11.L
TIC Integration Parameters: LSCINT.P



Data Path : Z:\VOASRV\HPCHEM1\MSVOA_D\DATA\VD100918\
Data File : VD060159.D
Acq On : 9 Oct 2018 19:04
Operator : VA/AP
Sample : J5326-09
Misc : 6.17g/5ml/MSVOA_D/SOIL
ALS Vial : 16 Sample Multiplier: 1

Instrument :
MSVOA_D
ClientSampleId :
FL-PIT-3

Quant Method : Z:\VOASRV\HPCHEM1\MSVOA_D\METHOD\82D100118S.M
Quant Title : SW846 8260

TIC Library : C:\DATABASE\NIST11.L
TIC Integration Parameters: LSCINT.P

No Library Search Compounds Detected

Data Path : Z:\VOASRV\HPCHEM1\MSVOA_D\DATA\VD100918\
Data File : VD060159.D
Acq On : 9 Oct 2018 19:04
Operator : VA/AP
Sample : J5326-09
Misc : 6.17g/5ml/MSVOA_D/SOIL
ALS Vial : 16 Sample Multiplier: 1

Instrument :
MSVOA_D
ClientSampleId :
FL-PIT-3

Quant Method : Z:\VOASRV\HPCHEM1\MSVOA_D\METHOD\82D100118S.M
Quant Title : SW846 8260

TIC Library : C:\DATABASE\NIST11.L
TIC Integration Parameters: LSCINT.P

TIC Top Hit name	RT	EstConc	Units	Response	--Internal Standard--			
					#	RT	Resp	Conc
