

Data Path : Z:\VOASRV\HPCHEM1\MSVOA D\DATA\VD101019\  
 Data File : VD063907.D  
 Acq On : 10 Oct 2019 13:48  
 Operator : VA/SY  
 Sample : K5285-05  
 Misc : 5.09G/5ml/MSVOA D/SOIL  
 ALS Vial : 8 Sample Multiplier: 1

Instrument :  
 MSVOA\_D  
 ClientSampleId :  
 TP-1-D1

Quant Time: Oct 11 07:55:43 2019  
 Quant Method : Z:\VOASRV\HPCHEM1\MSVOA\_D\METHOD\82D100219S.M  
 Quant Title : SW846 8260  
 QLast Update : Sat Oct 05 03:51:17 2019  
 Response via : Initial Calibration

Internal Standards	R.T.	QIon	Response	Conc	Units	Dev(Min)
1) Pentafluorobenzene	7.98	168	193258	50.00	ug/l	0.00
34) 1,4-Difluorobenzene	8.87	114	314934	50.00	ug/l	0.00
63) Chlorobenzene-d5	11.64	117	305142	50.00	ug/l	0.00
72) 1,4-Dichlorobenzene-d4	13.57	152	149592	50.00	ug/l	0.00

System Monitoring Compounds	R.T.	QIon	Response	Conc	Units	Dev(Min)
33) 1,2-Dichloroethane-d4	8.34	65	98508	52.36	ug/l	0.00
Spiked Amount				50.000		
Recovery						= 104.72%
35) Dibromofluoromethane	7.92	113	98731	51.30	ug/l	0.00
Spiked Amount				50.000		
Recovery						= 102.60%
50) Toluene-d8	10.34	98	406439	52.03	ug/l	0.00
Spiked Amount				50.000		
Recovery						= 104.06%
62) 4-Bromofluorobenzene	12.64	95	122803	45.24	ug/l	0.00
Spiked Amount				50.000		
Recovery						= 90.48%

Target Compounds Qvalue

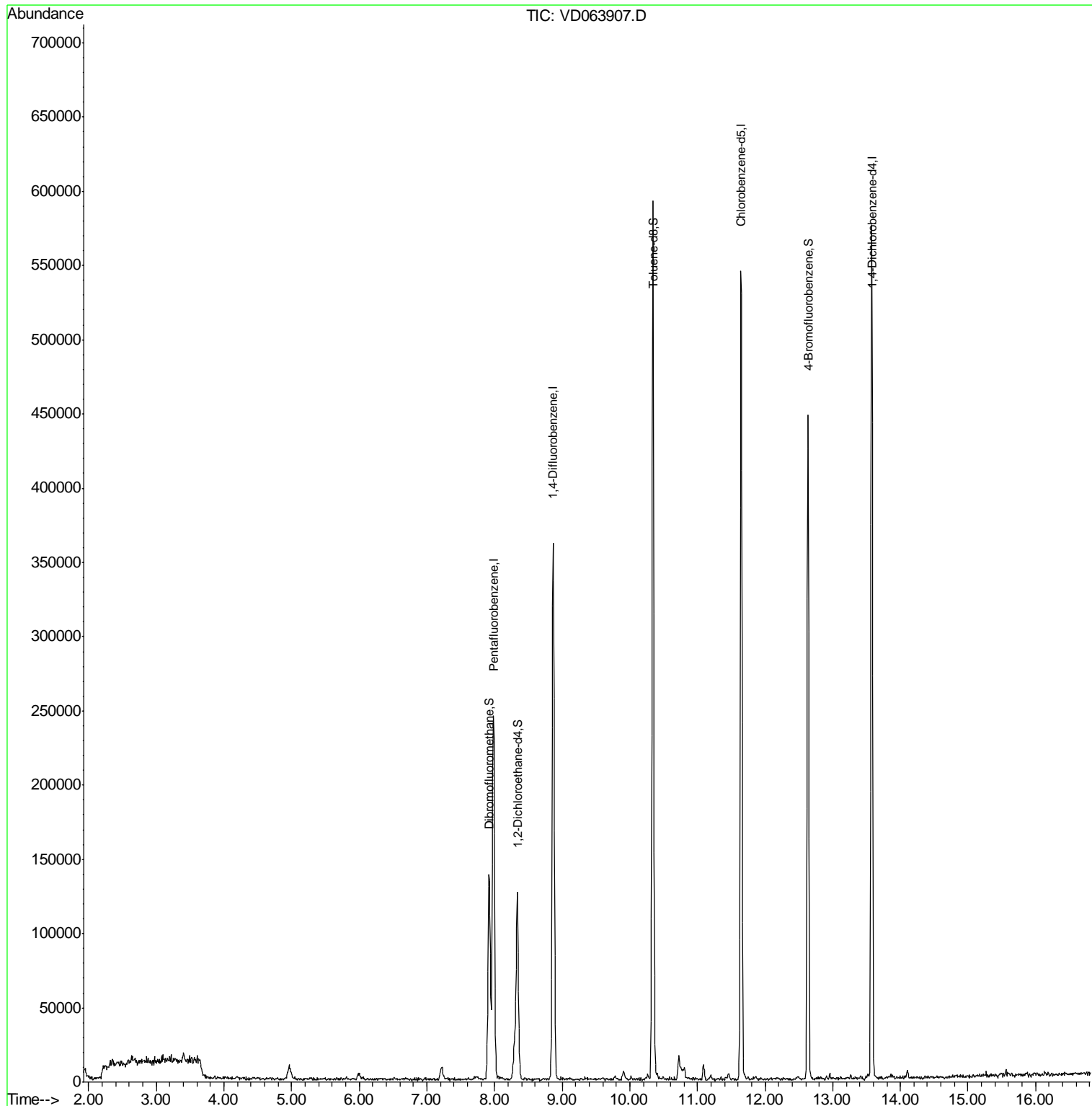
---

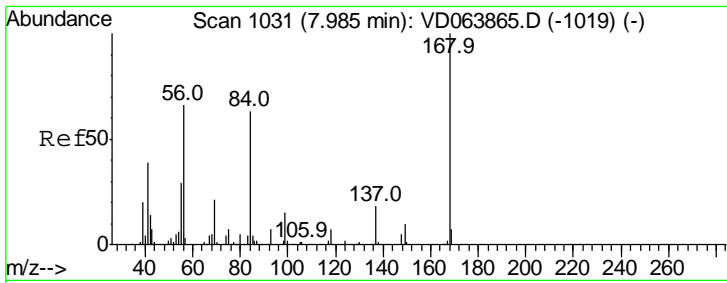
(#) = qualifier out of range (m) = manual integration (+) = signals summed

Data Path : Z:\VOASRV\HPCHEM1\MSVOA D\DATA\VD101019\  
 Data File : VD063907.D  
 Acq On : 10 Oct 2019 13:48  
 Operator : VA/SY  
 Sample : K5285-05  
 Misc : 5.09G/5ml/MSVOA D/SOIL  
 ALS Vial : 8 Sample Multiplier: 1

Instrument :  
 MSVOA\_D  
 ClientSampled :  
 TP-1-D1

Quant Time: Oct 11 07:55:43 2019  
 Quant Method : Z:\VOASRV\HPCHEM1\MSVOA\_D\METHOD\82D100219S.M  
 Quant Title : SW846 8260  
 QLast Update : Sat Oct 05 03:51:17 2019  
 Response via : Initial Calibration

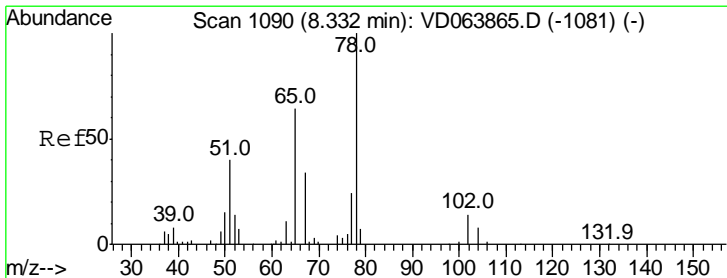
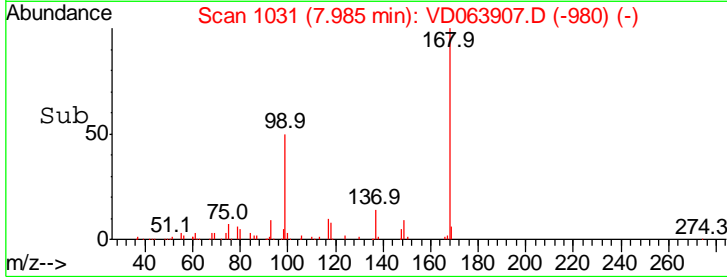
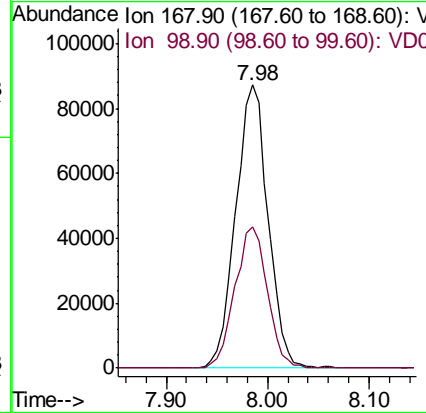
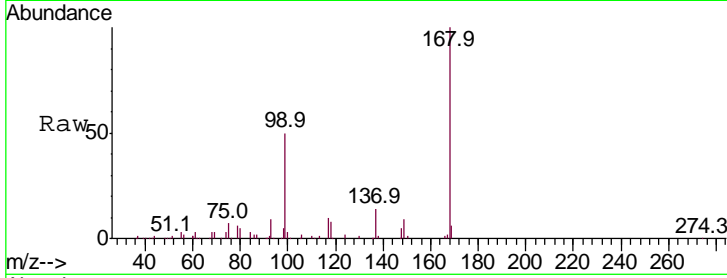




#1  
 Pentafluorobenzene  
 Concen: 50.000 ug/l  
 RT: 7.98 min Scan# 1031  
 Delta R.T. -0.00 min  
 Lab File: VD063907.D  
 Acq: 10 Oct 2019 13:48

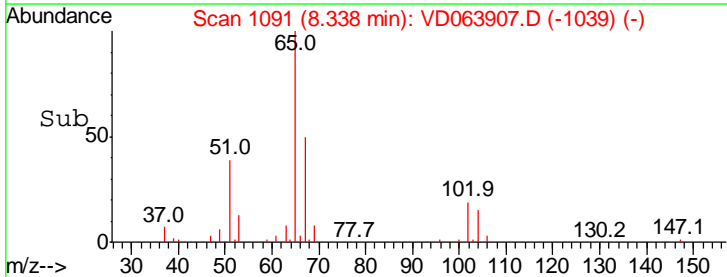
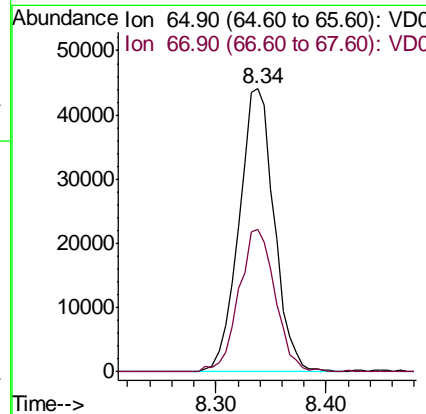
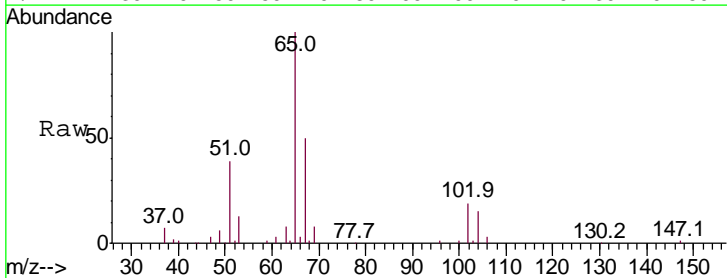
**Instrument :**  
 MSVOA\_D  
**ClientSampled :**  
 TP-1-D1

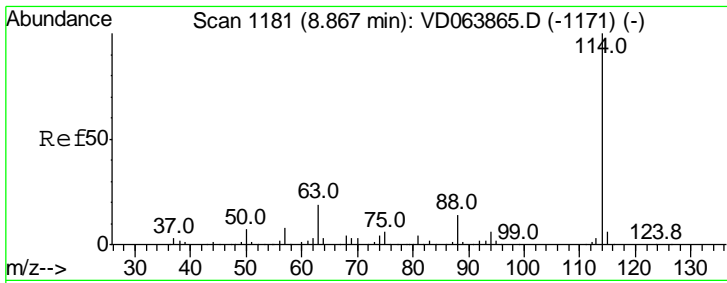
Tgt Ion	Resp	Lower	Upper
168	100		
99	49.9	43.0	64.4



#33  
 1,2-Dichloroethane-d4  
 Concen: 52.356 ug/l  
 RT: 8.34 min Scan# 1091  
 Delta R.T. 0.01 min  
 Lab File: VD063907.D  
 Acq: 10 Oct 2019 13:48

Tgt Ion	Resp	Lower	Upper
65	100		
67	52.2	0.0	106.4

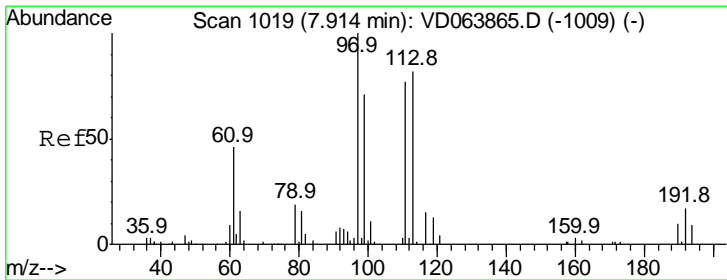
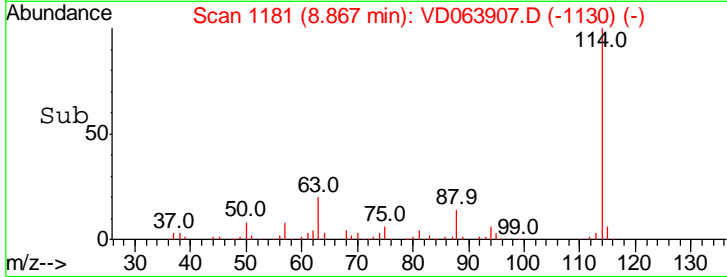
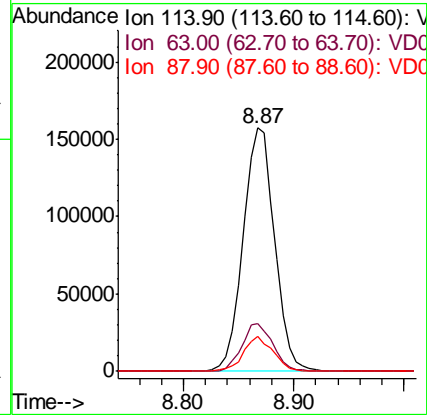
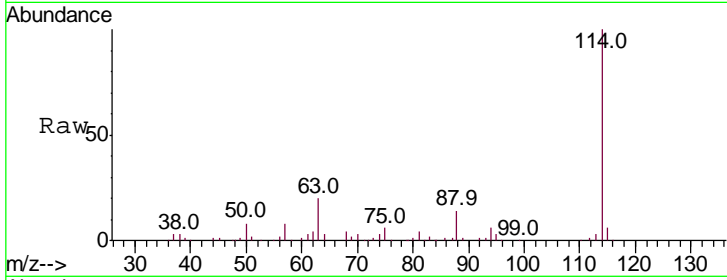




#34  
 1,4-Difluorobenzene  
 Concen: 50.000 ug/l  
 RT: 8.87 min Scan# 1181  
 Delta R.T. -0.00 min  
 Lab File: VD063907.D  
 Acq: 10 Oct 2019 13:48

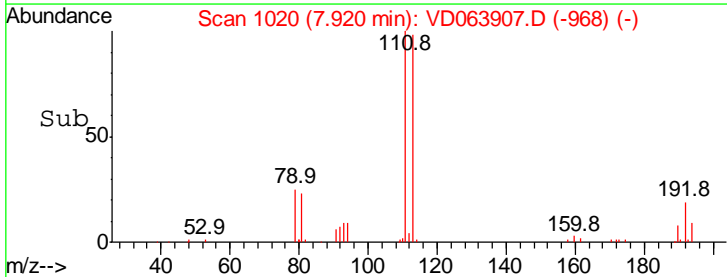
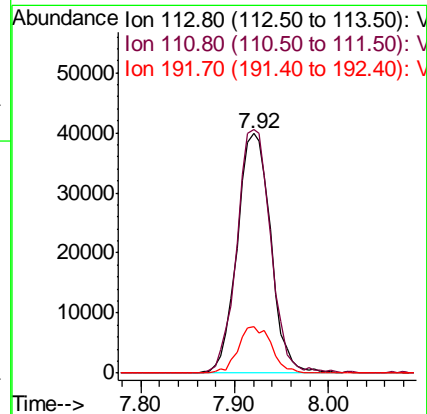
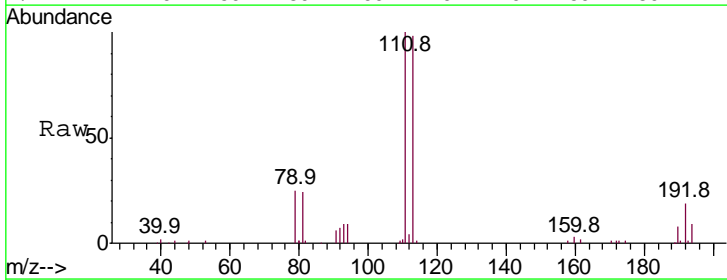
Instrument :  
 MSVOA\_D  
 ClientSampled :  
 TP-1-D1

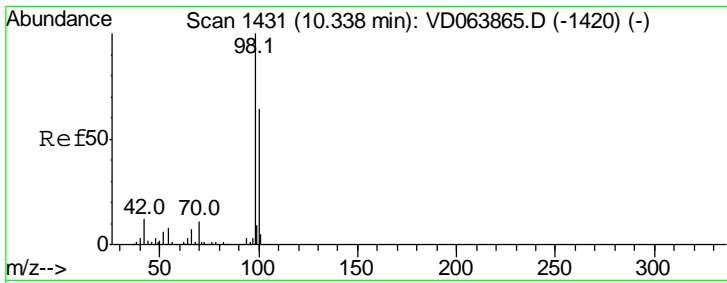
Tgt Ion	Resp	Lower	Upper
114	100		
63	19.6	0.0	38.4
88	14.4	0.0	27.4



#35  
 Dibromofluoromethane  
 Concen: 51.298 ug/l  
 RT: 7.92 min Scan# 1020  
 Delta R.T. 0.01 min  
 Lab File: VD063907.D  
 Acq: 10 Oct 2019 13:48

Tgt Ion	Resp	Lower	Upper
113	100		
111	102.5	82.6	123.8
192	19.1	17.1	25.7

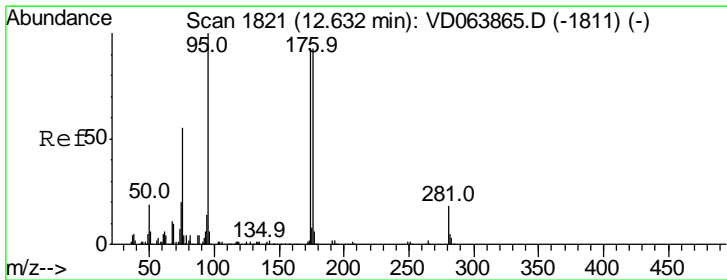
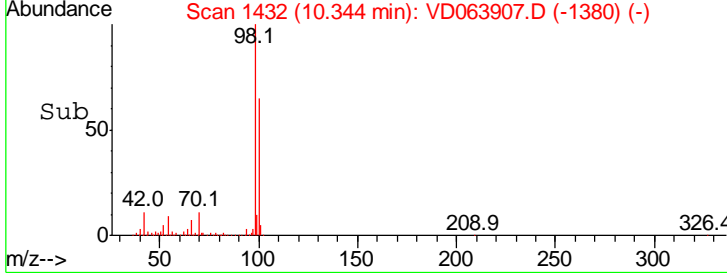
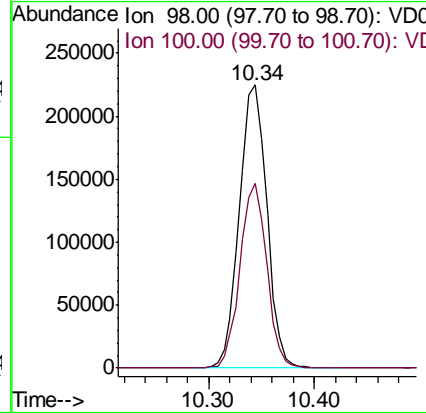
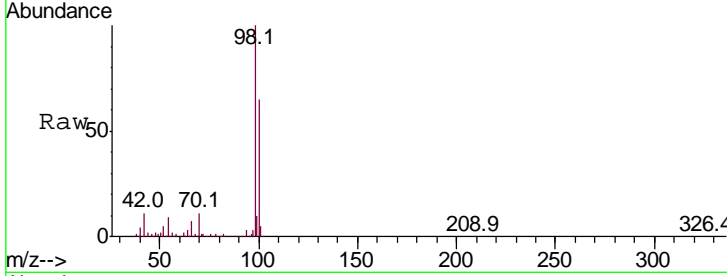




#50  
 Toluene-d8  
 Concen: 52.028 ug/l  
 RT: 10.34 min Scan# 1432  
 Delta R.T. 0.01 min  
 Lab File: VD063907.D  
 Acq: 10 Oct 2019 13:48

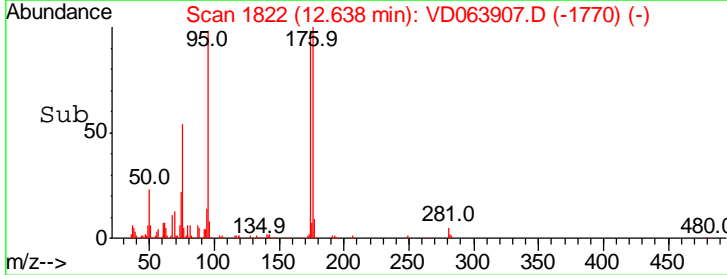
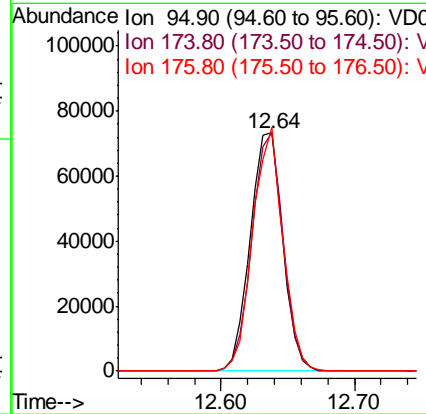
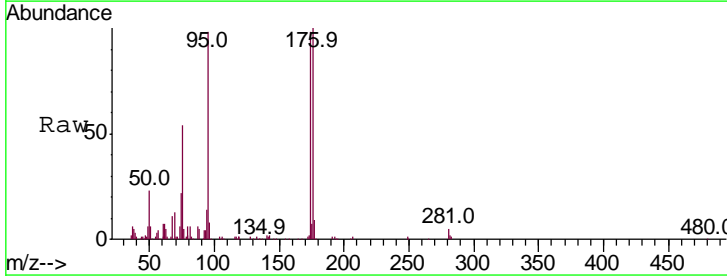
Instrument : MSVOA\_D  
 ClientSampled : TP-1-D1

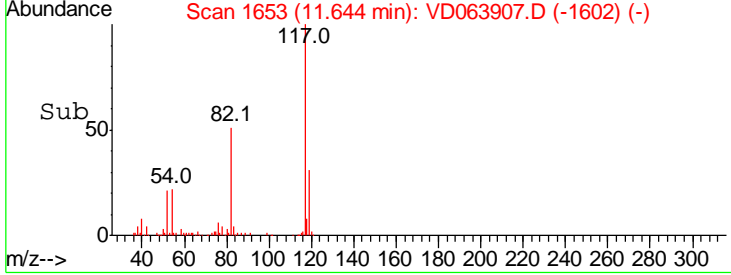
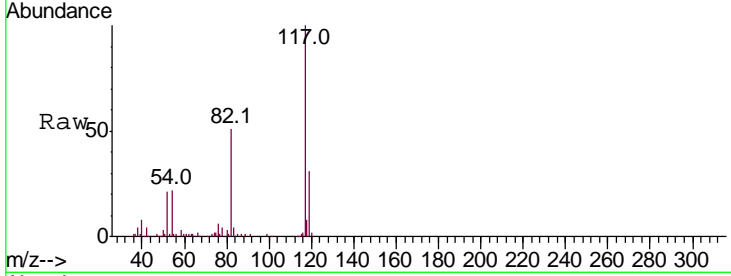
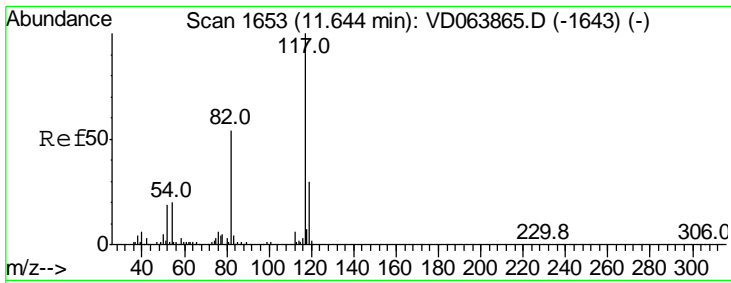
Tgt Ion	Resp	Lower	Upper
98	100		
100	63.1	52.1	78.1



#62  
 4-Bromofluorobenzene  
 Concen: 45.238 ug/l  
 RT: 12.64 min Scan# 1822  
 Delta R.T. 0.01 min  
 Lab File: VD063907.D  
 Acq: 10 Oct 2019 13:48

Tgt Ion	Resp	Lower	Upper
95	100		
174	95.7	0.0	186.4
176	95.0	0.0	184.2

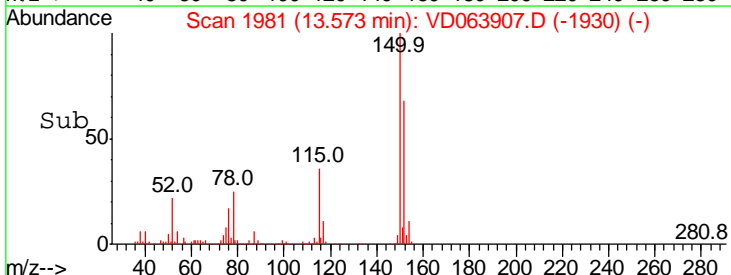
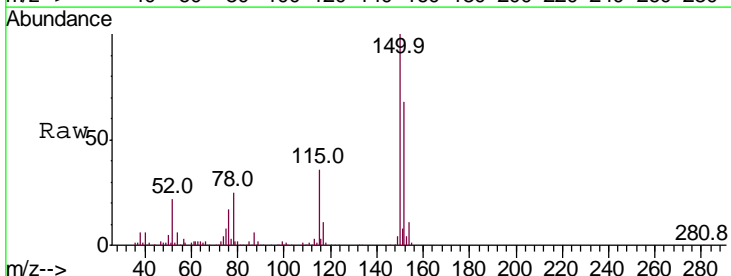
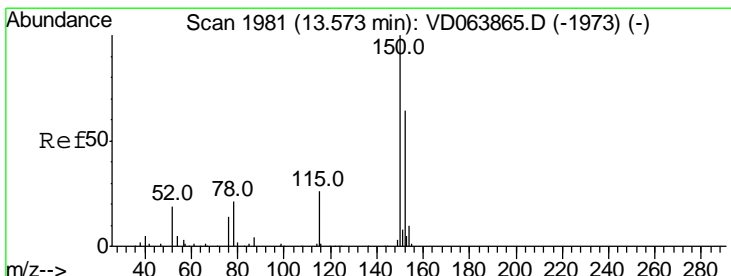
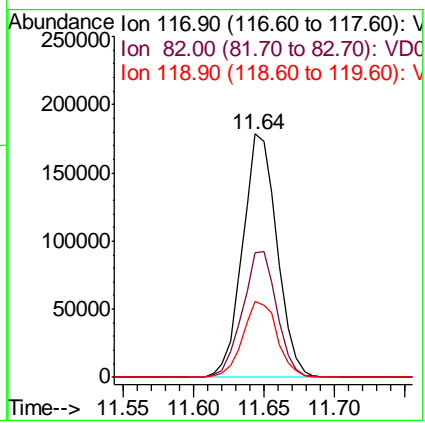




#63  
 Chlorobenzene-d5  
 Concen: 50.000 ug/l  
 RT: 11.64 min Scan# 1653  
 Delta R.T. -0.00 min  
 Lab File: VD063907.D  
 Acq: 10 Oct 2019 13:48

Instrument : MSVOA\_D  
 ClientSampled : TP-1-D1

Tgt Ion	Resp	Lower	Upper
117	100		
82	51.2	42.8	64.2
119	31.1	24.4	36.6



#72  
 1,4-Dichlorobenzene-d4  
 Concen: 50.000 ug/l  
 RT: 13.57 min Scan# 1981  
 Delta R.T. -0.00 min  
 Lab File: VD063907.D  
 Acq: 10 Oct 2019 13:48

Tgt Ion	Resp	Lower	Upper
152	100		
115	55.0	25.9	77.7
150	158.4	0.0	344.2

