

Data Path : Z:\VOASRV\HPCHEM1\MSVOA D\DATA\VD101019\
 Data File : VD063915.D
 Acq On : 10 Oct 2019 17:34
 Operator : VA/SY
 Sample : K5297-04
 Misc : 6.00G/5ml/MSVOA D/SOIL
 ALS Vial : 16 Sample Multiplier: 1

Instrument :
 MSVOA_D
 ClientSampled :
 TP-1

Manual Integrations
 APPROVED

MMDadoda
 10/11/2019 10:24:10 AM

Quant Time: Oct 11 08:16:50 2019
 Quant Method : Z:\VOASRV\HPCHEM1\MSVOA_D\METHOD\82D100219S.M
 Quant Title : SW846 8260
 QLast Update : Sat Oct 05 03:51:17 2019
 Response via : Initial Calibration

Internal Standards	R.T.	QIon	Response	Conc	Units	Dev(Min)
1) Pentafluorobenzene	7.99	168	33898	50.00	ug/l	0.00
34) 1,4-Difluorobenzene	8.87	114	62379	50.00	ug/l	0.00
63) Chlorobenzene-d5	11.64	117	61763	50.00	ug/l	0.00
72) 1,4-Dichlorobenzene-d4	13.57	152	32125	50.00	ug/l	0.00
System Monitoring Compounds						
33) 1,2-Dichloroethane-d4	8.34	65	23259	70.48	ug/l	0.00
Spiked Amount	50.000		Recovery	=	140.96%	
35) Dibromofluoromethane	7.93	113	19846	52.06	ug/l	0.01
Spiked Amount	50.000		Recovery	=	104.12%	
50) Toluene-d8	10.34	98	78806	50.93	ug/l	0.00
Spiked Amount	50.000		Recovery	=	101.86%	
62) 4-Bromofluorobenzene	12.64	95	26294	48.90	ug/l	0.00
Spiked Amount	50.000		Recovery	=	97.80%	
Target Compounds						
					Qvalue	
78) n-propylbenzene	12.82	91	15334	6.049	ug/l	97
80) 1,3,5-Trimethylbenzene	12.96	105	5411	3.003	ug/l	95
84) 1,2,4-Trimethylbenzene	13.27	105	20068	10.804	ug/l	92
85) sec-Butylbenzene	13.40	105	3397	1.569	ug/l #	36
86) p-Isopropyltoluene	13.53	119	2134	1.041	ug/l #	50
89) n-Butylbenzene	13.84	91	9024m	4.731	ug/l	
95) Naphthalene	15.40	128	93144	78.392	ug/l	98

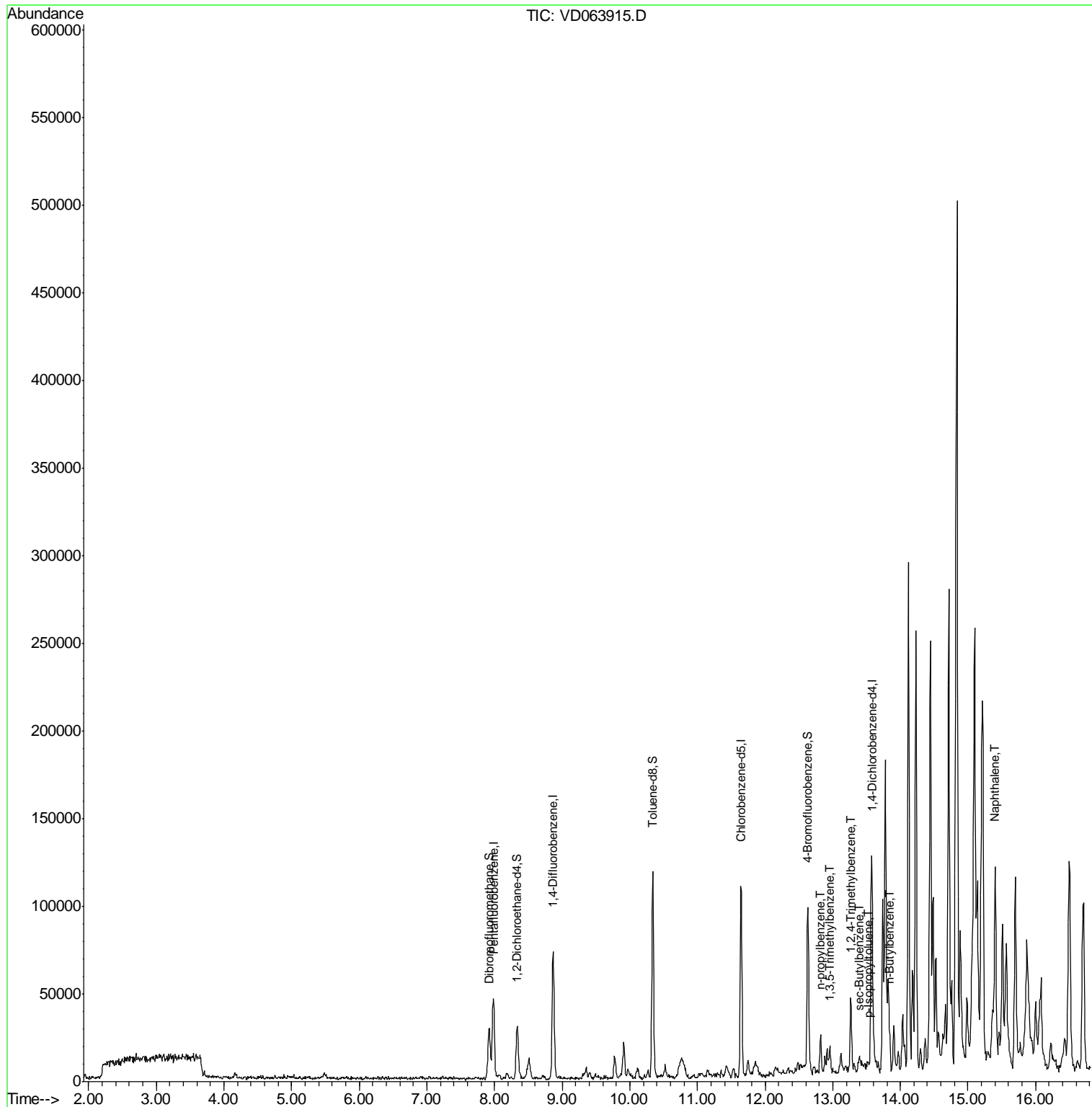
(#) = qualifier out of range (m) = manual integration (+) = signals summed

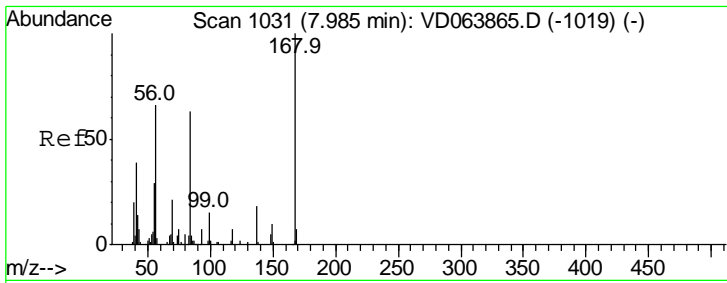
Data Path : Z:\VOASRV\HPCHEM1\MSVOA D\DATA\VD101019\
 Data File : VD063915.D
 Acq On : 10 Oct 2019 17:34
 Operator : VA/SY
 Sample : K5297-04
 Misc : 6.00G/5ml/MSVOA D/SOIL
 ALS Vial : 16 Sample Multiplier: 1

Instrument :
 MSVOA_D
Client Sampled :
 TP-1

Manual Integrations
APPROVED
 MMDadoda
 10/11/2019 10:24:10 AM

Quant Time: Oct 11 08:16:50 2019
 Quant Method : Z:\VOASRV\HPCHEM1\MSVOA_D\METHOD\82D100219S.M
 Quant Title : SW846 8260
 QLast Update : Sat Oct 05 03:51:17 2019
 Response via : Initial Calibration



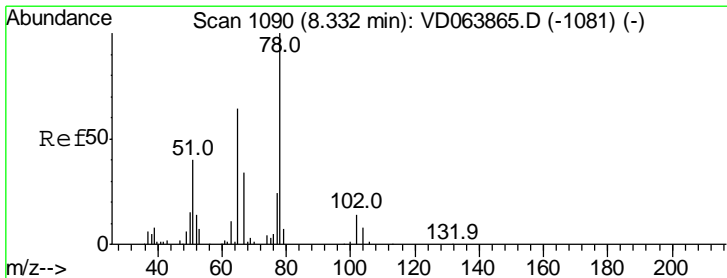
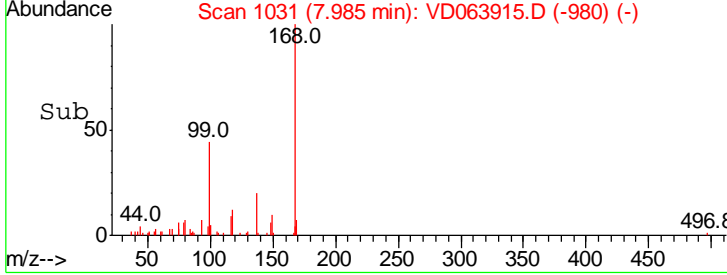
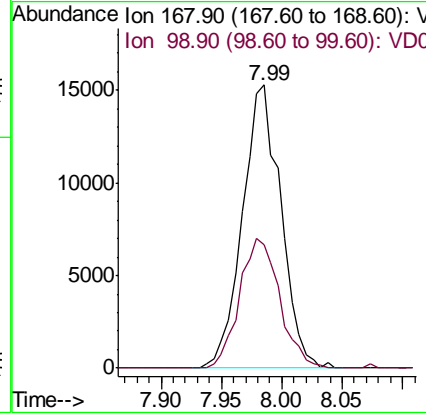
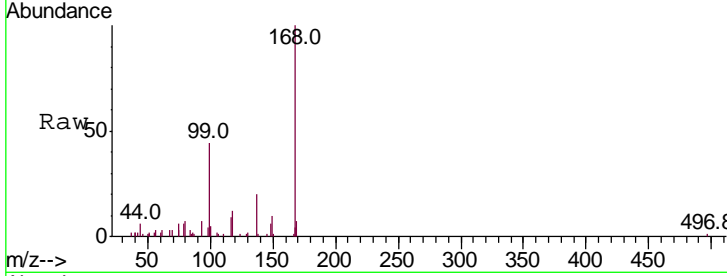


#1
 Pentafluorobenzene
 Concen: 50.000 ug/l
 RT: 7.99 min Scan# 1031
 Delta R.T. 0.00 min
 Lab File: VD063915.D
 Acq: 10 Oct 2019 17:34

Tgt Ion	Resp	Lower	Upper
168	100		
99	43.5	43.0	64.4

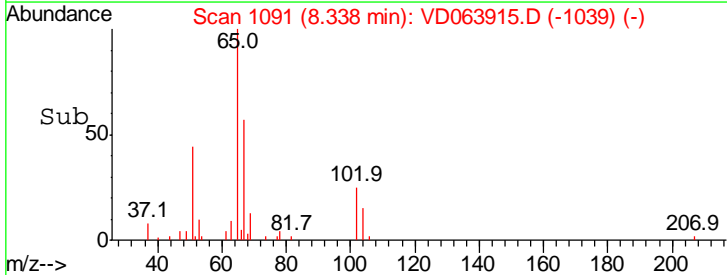
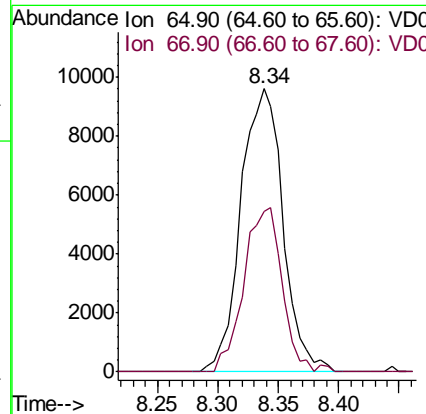
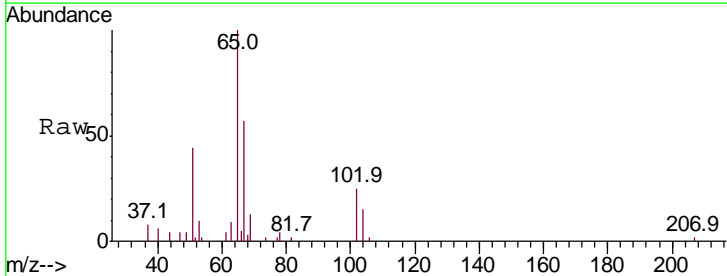
Instrument : MSVOA_D
 ClientSampled : TP-1

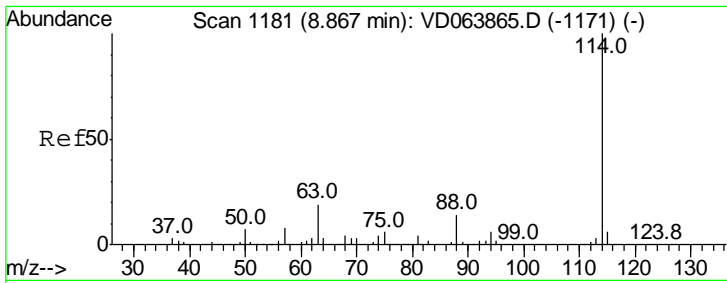
Manual Integrations APPROVED
 MMDadoda
 10/11/2019 10:24:10 AM



#33
 1,2-Dichloroethane-d4
 Concen: 70.477 ug/l
 RT: 8.34 min Scan# 1091
 Delta R.T. 0.01 min
 Lab File: VD063915.D
 Acq: 10 Oct 2019 17:34

Tgt Ion	Resp	Lower	Upper
65	100		
67	53.2	0.0	106.4





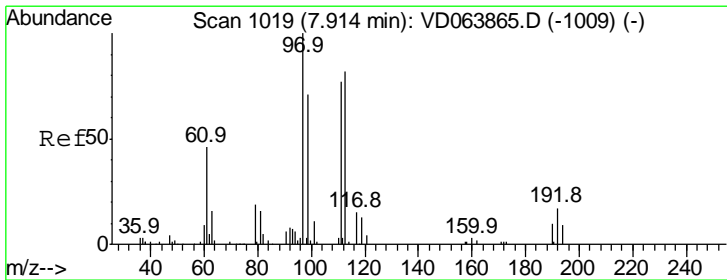
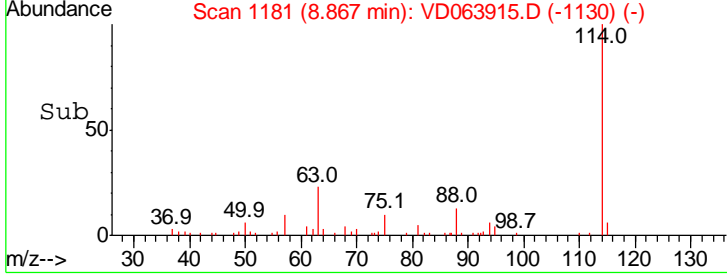
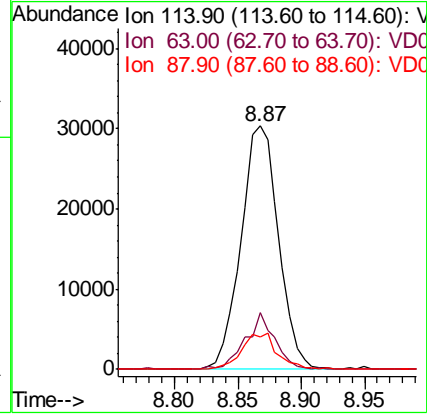
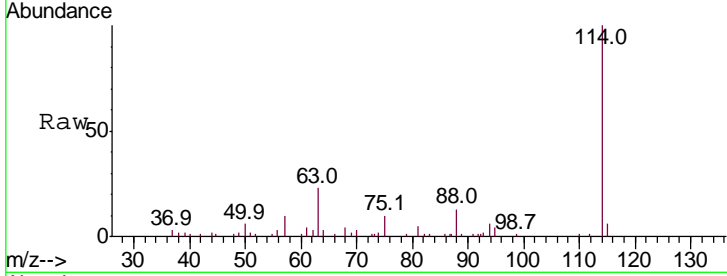
#34
 1,4-Difluorobenzene
 Concen: 50.000 ug/l
 RT: 8.87 min Scan# 1181
 Delta R.T. 0.00 min
 Lab File: VD063915.D
 Acq: 10 Oct 2019 17:34

Instrument : MSVOA_D
 ClientSampled : TP-1

Tgt Ion	Ratio	Lower	Upper
114	100		
63	23.3	0.0	38.4
88	13.3	0.0	27.4

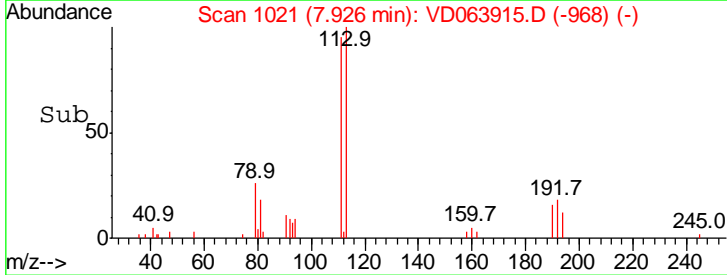
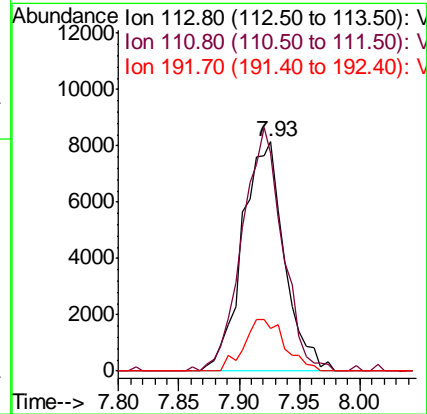
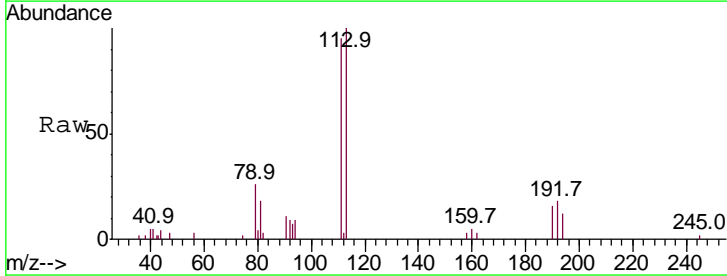
Manual Integrations
 APPROVED

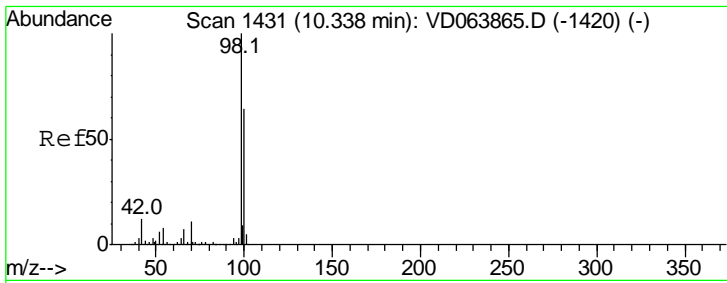
MMDadoda
 10/11/2019 10:24:10 AM



#35
 Dibromofluoromethane
 Concen: 52.060 ug/l
 RT: 7.93 min Scan# 1021
 Delta R.T. 0.01 min
 Lab File: VD063915.D
 Acq: 10 Oct 2019 17:34

Tgt Ion	Ratio	Lower	Upper
113	100		
111	101.7	82.6	123.8
192	21.7	17.1	25.7





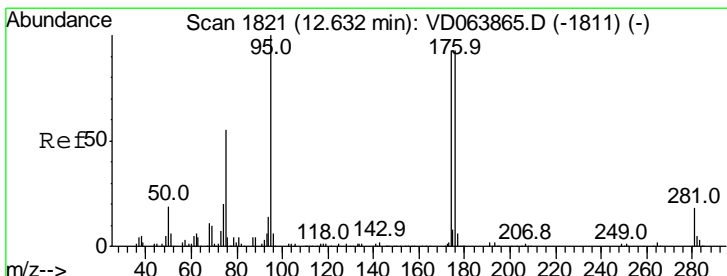
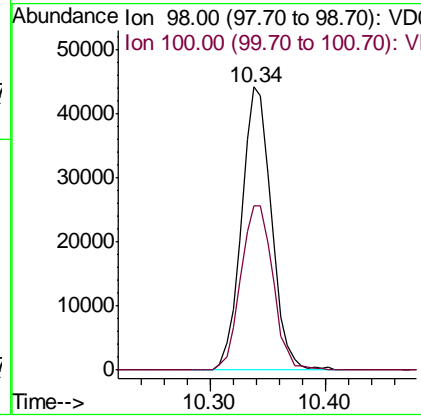
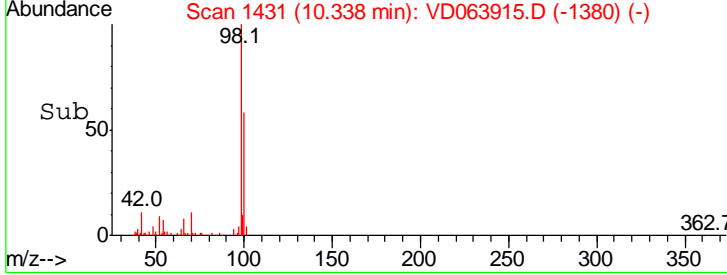
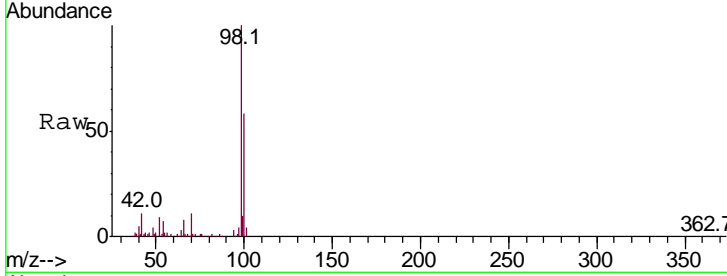
#50
 Toluene-d8
 Concen: 50.931 ug/l
 RT: 10.34 min Scan# 1431
 Delta R.T. 0.00 min
 Lab File: VD063915.D
 Acq: 10 Oct 2019 17:34

Instrument : MSVOA_D
 ClientSampled : TP-1

Tgt Ion	Resp	Lower	Upper
98	100		
100	62.8	52.1	78.1

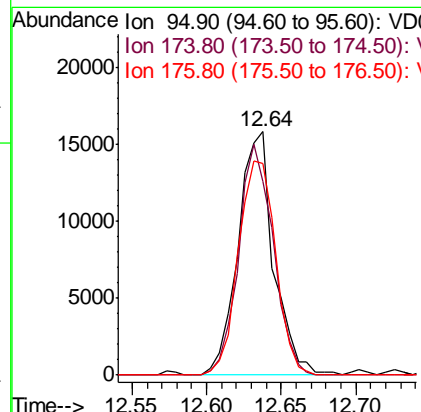
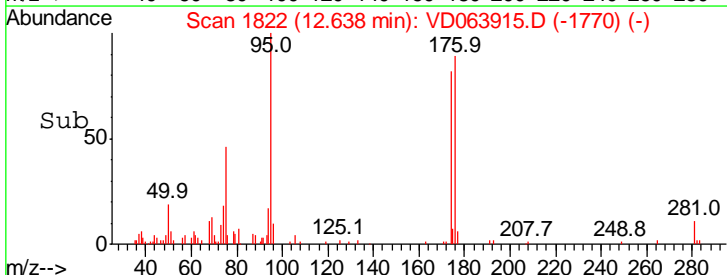
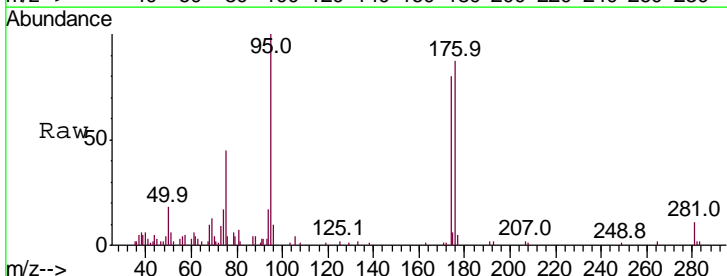
Manual Integrations
 APPROVED

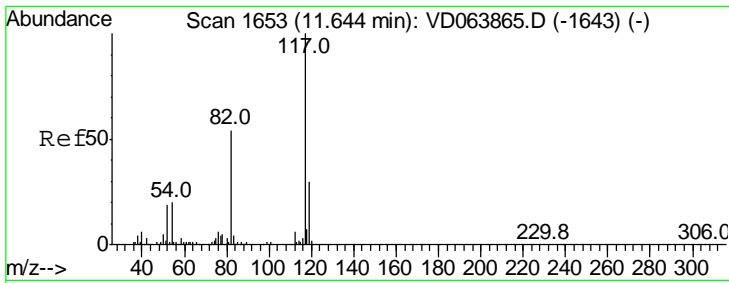
MMDadoda
 10/11/2019 10:24:10 AM



#62
 4-Bromofluorobenzene
 Concen: 48.902 ug/l
 RT: 12.64 min Scan# 1822
 Delta R.T. 0.01 min
 Lab File: VD063915.D
 Acq: 10 Oct 2019 17:34

Tgt Ion	Resp	Lower	Upper
95	100		
174	92.2	0.0	186.4
176	92.0	0.0	184.2



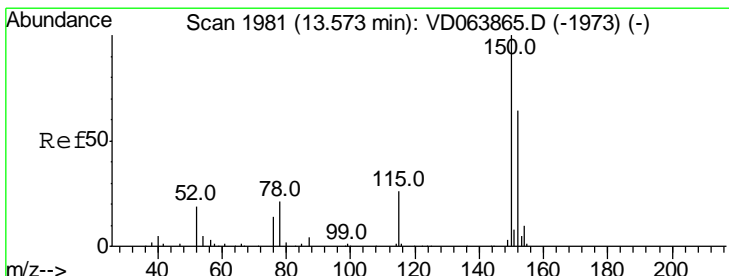
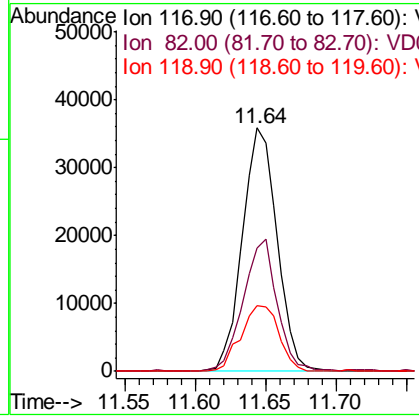
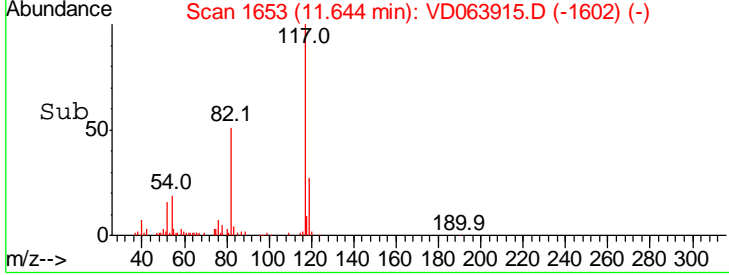
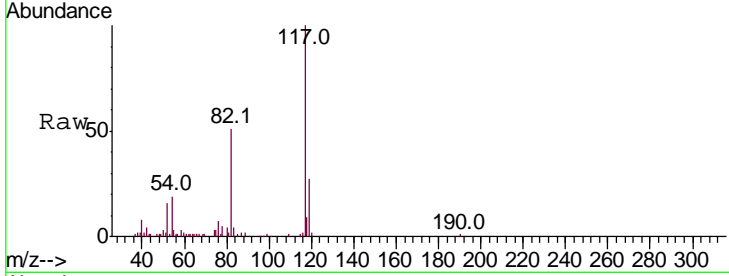


#63
 Chlorobenzene-d5
 Concen: 50.000 ug/l
 RT: 11.64 min Scan# 1653
 Delta R.T. -0.00 min
 Lab File: VD063915.D
 Acq: 10 Oct 2019 17:34

Instrument : MSVOA_D
 ClientSampled : TP-1

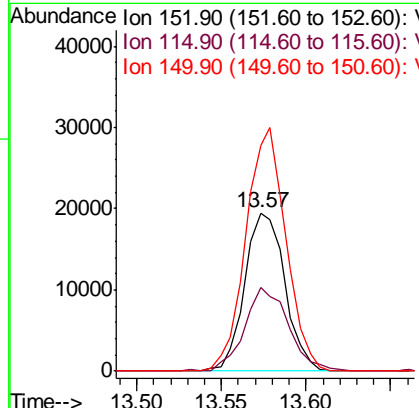
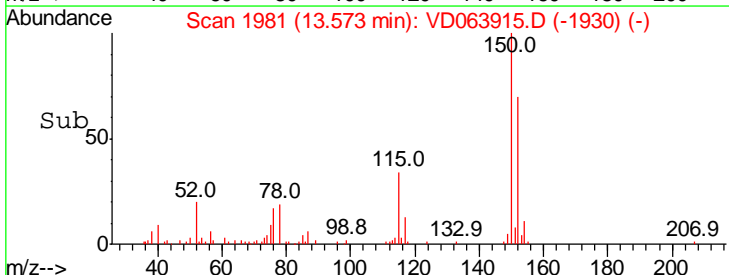
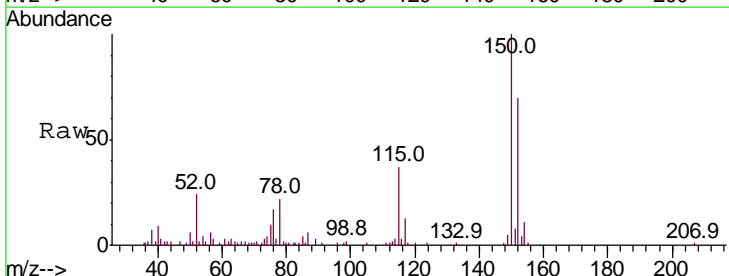
Tgt Ion	Resp	Lower	Upper
117	100		
82	50.9	42.8	64.2
119	26.9	24.4	36.6

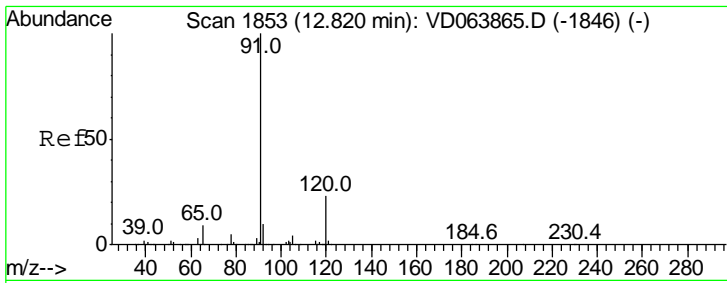
Manual Integrations
APPROVED
 MMDadoda
 10/11/2019 10:24:10 AM



#72
 1,4-Dichlorobenzene-d4
 Concen: 50.000 ug/l
 RT: 13.57 min Scan# 1981
 Delta R.T. -0.00 min
 Lab File: VD063915.D
 Acq: 10 Oct 2019 17:34

Tgt Ion	Resp	Lower	Upper
152	100		
115	57.7	25.9	77.7
150	153.0	0.0	344.2





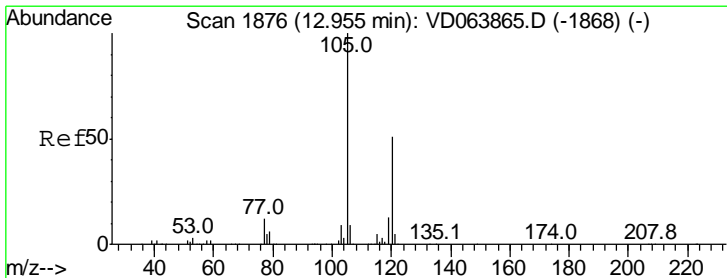
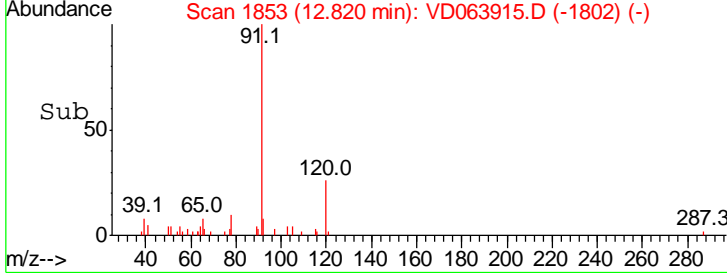
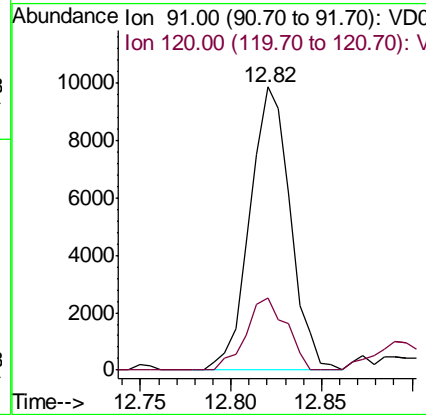
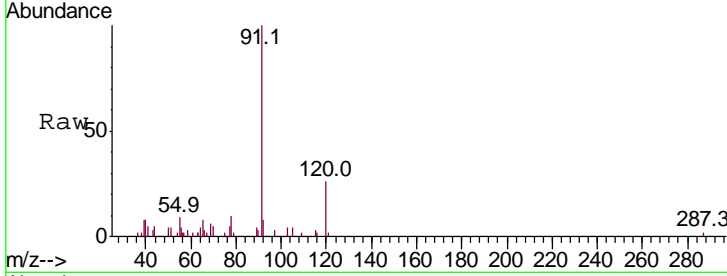
#78
 n-propylbenzene
 Concen: 6.049 ug/l
 RT: 12.82 min Scan# 1853
 Delta R.T. 0.00 min
 Lab File: VD063915.D
 Acq: 10 Oct 2019 17:34

Instrument : MSVOA_D
 Client Sampled : TP-1

Tgt Ion	Resp	Lower	Upper
91	100		
120	25.3	12.0	36.0

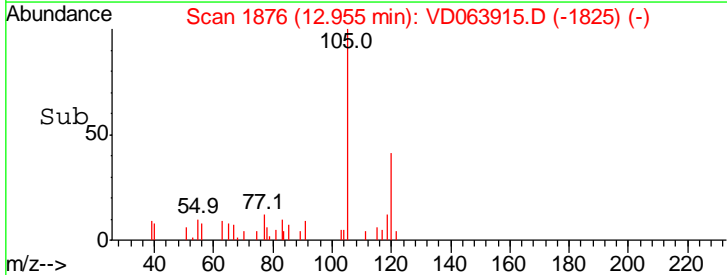
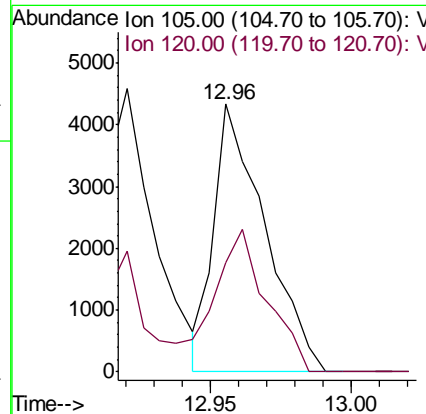
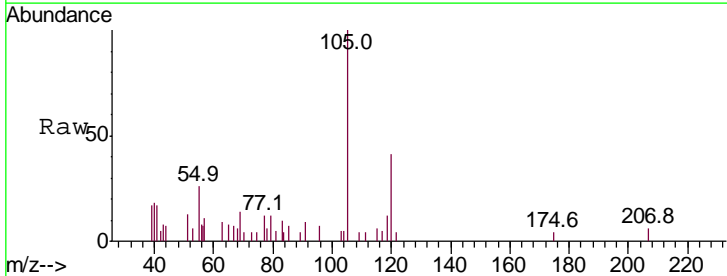
Manual Integrations
 APPROVED

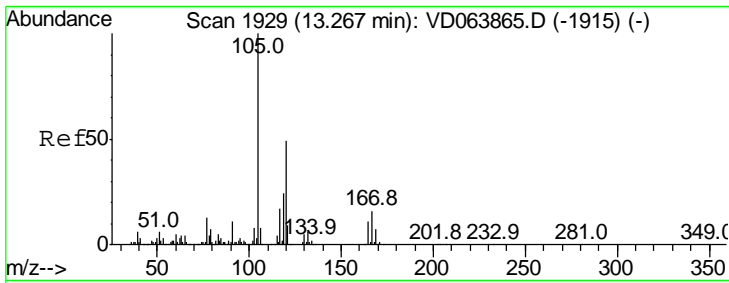
MMDadoda
 10/11/2019 10:24:10 AM



#80
 1,3,5-Trimethylbenzene
 Concen: 3.003 ug/l
 RT: 12.96 min Scan# 1876
 Delta R.T. -0.00 min
 Lab File: VD063915.D
 Acq: 10 Oct 2019 17:34

Tgt Ion	Resp	Lower	Upper
105	100		
120	55.5	25.9	77.8





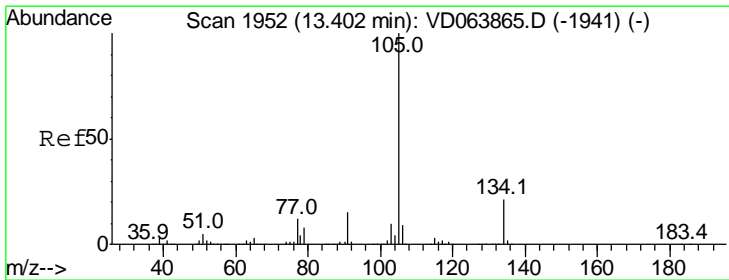
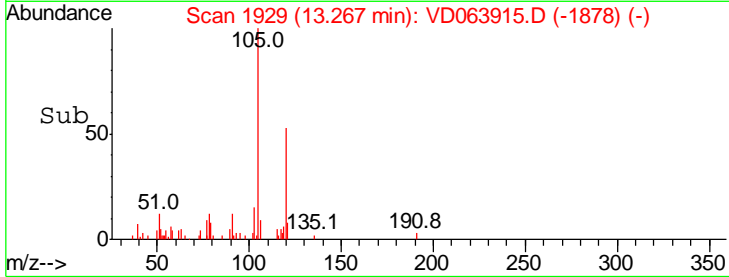
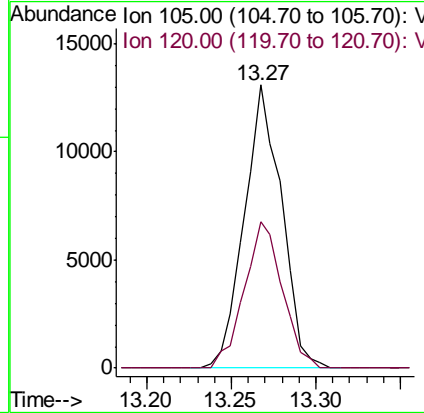
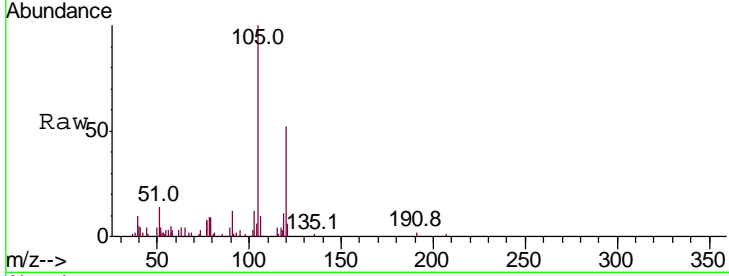
#84
 1,2,4-Trimethylbenzene
 Concen: 10.804 ug/l
 RT: 13.27 min Scan# 1929
 Delta R.T. -0.00 min
 Lab File: VD063915.D
 Acq: 10 Oct 2019 17:34

Instrument :
 MSVOA_D
 ClientSampled :
 TP-1

Tgt Ion	Ratio	Lower	Upper
105	100		
120	52.9	23.8	71.5

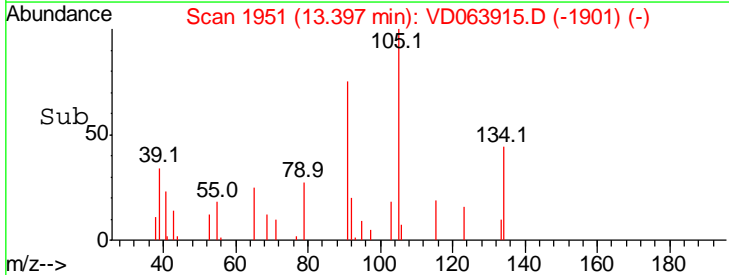
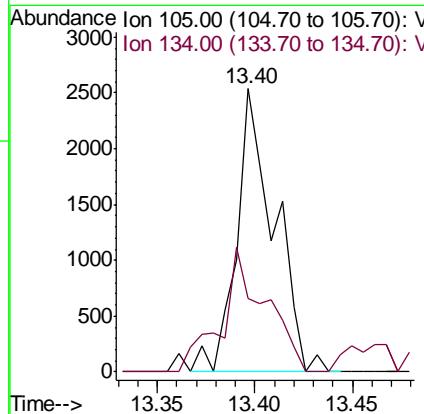
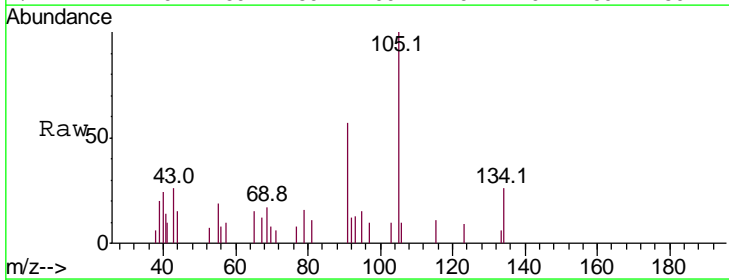
Manual Integrations
 APPROVED

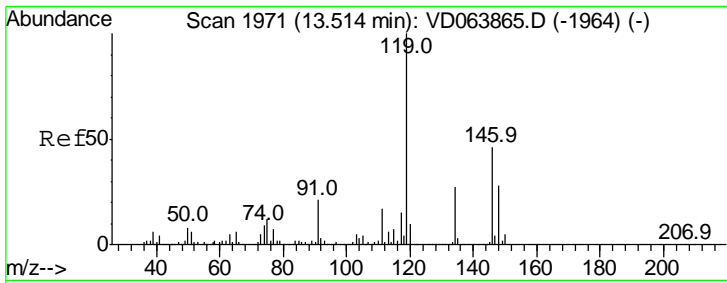
MMDadoda
 10/11/2019 10:24:10 AM



#85
 sec-Butylbenzene
 Concen: 1.569 ug/l
 RT: 13.40 min Scan# 1951
 Delta R.T. -0.01 min
 Lab File: VD063915.D
 Acq: 10 Oct 2019 17:34

Tgt Ion	Ratio	Lower	Upper
105	100		
134	51.3	10.6	31.8#





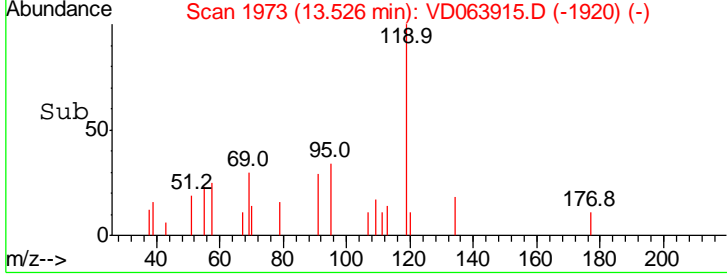
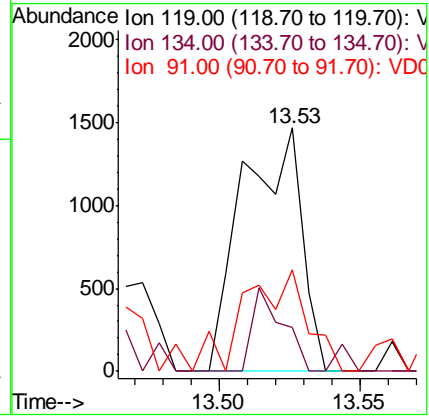
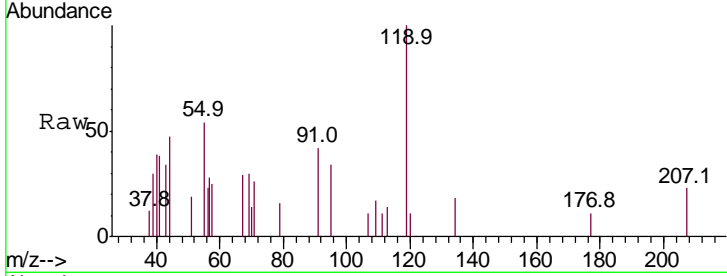
#86
 p-Isopropyltoluene
 Concen: 1.041 ug/l
 RT: 13.53 min Scan# 1973
 Delta R.T. 0.01 min
 Lab File: VD063915.D
 Acq: 10 Oct 2019 17:34

Instrument : MSVOA_D
 ClientSampled : TP-1

Tgt Ion	Resp	Lower	Upper
119	100		
134	0.0	13.9	41.6#
91	44.2	11.2	33.5#

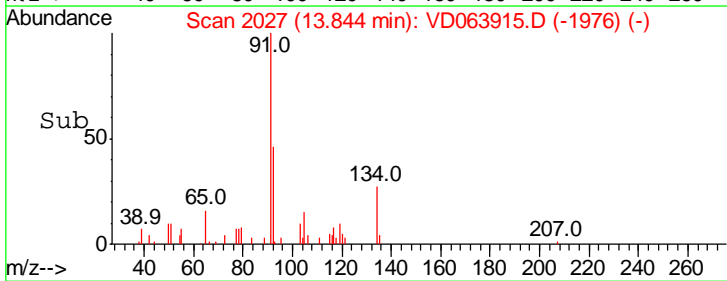
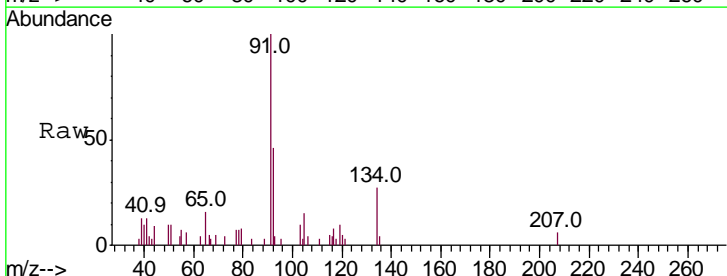
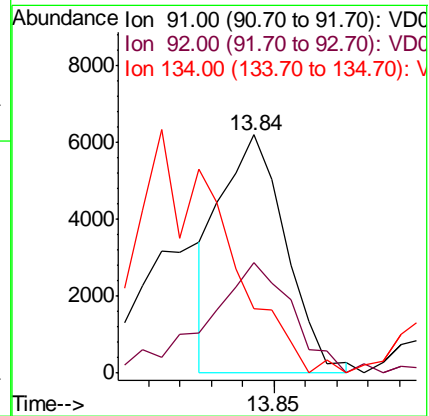
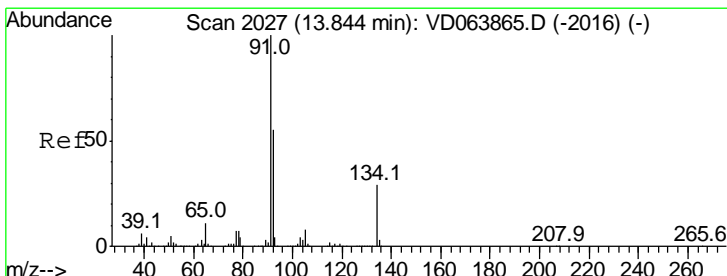
Manual Integrations
 APPROVED

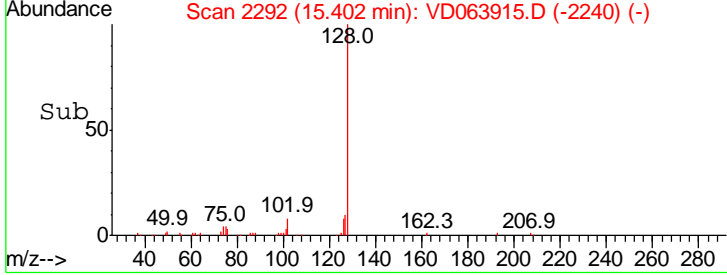
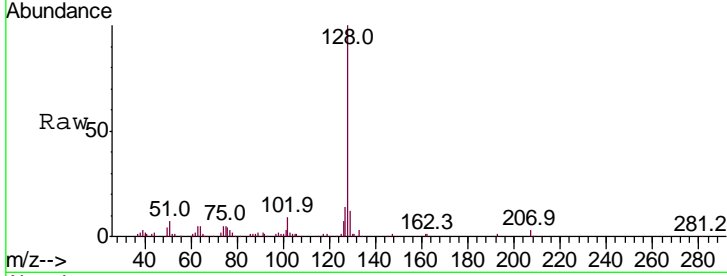
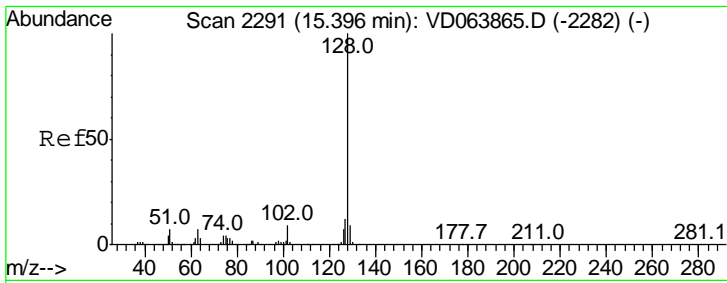
MMDadoda
 10/11/2019 10:24:10 AM



#89
 n-Butylbenzene
 Concen: 4.731 ug/l m
 RT: 13.84 min Scan# 2027
 Delta R.T. -0.00 min
 Lab File: VD063915.D
 Acq: 10 Oct 2019 17:34

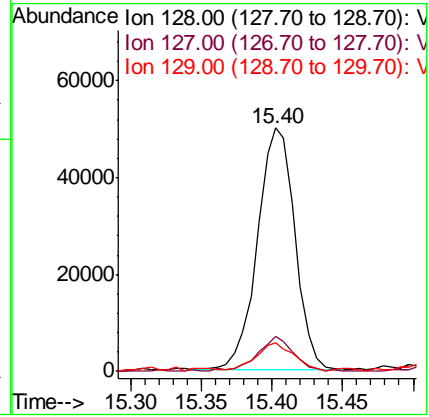
Tgt Ion	Resp	Lower	Upper
91	100		
92	60.4	26.8	80.3
134	0.0	14.4	43.0#





#95
 Naphthalene
 Concen: 78.392 ug/l
 RT: 15.40 min Scan# 2292
 Delta R.T. 0.01 min
 Lab File: VD063915.D
 Acq: 10 Oct 2019 17:34

Tot Ion	Ratio	Lower	Upper
128	100		
127	14.0	10.6	16.0
129	11.5	8.6	13.0



Instrument : MSVOA_D
 ClientSampled : TP-1

Manual Integrations
APPROVED
 MMDadoda
 10/11/2019 10:24:10 AM