

Data Path : Z:\VOASRV\HPCHEM1\MSVOA D\DATA\VD101220\
 Data File : VD067233.D
 Acq On : 12 Oct 2020 14:53
 Operator : VA/SY
 Sample : L4337-01
 Misc : 5.00G/5.00ml/MSVOA D/SOIL
 ALS Vial : 10 Sample Multiplier: 1

Instrument :
 MSVOA_D
 ClientSampleId :
 TP-4

Quant Time: Oct 13 00:16:44 2020
 Quant Method : Z:\VOASRV\HPCHEM1\MSVOA_D\METHOD\82D100120S.M
 Quant Title : SW846 8260
 QLast Update : Thu Oct 01 15:19:17 2020
 Response via : Initial Calibration

Internal Standards	R.T.	QIon	Response	Conc	Units	Dev(Min)
1) Pentafluorobenzene	7.98	168	362599	50.00	ug/l	0.00
34) 1,4-Difluorobenzene	8.87	114	583499	50.00	ug/l	0.00
63) Chlorobenzene-d5	11.65	117	540021	50.00	ug/l	0.00
72) 1,4-Dichlorobenzene-d4	13.58	152	254351	50.00	ug/l	0.00

System Monitoring Compounds

33) 1,2-Dichloroethane-d4	8.33	65	175229	50.17	ug/l	0.00
Spiked Amount	50.000		Recovery	=	100.34%	
35) Dibromofluoromethane	7.91	113	184569	48.32	ug/l	0.00
Spiked Amount	50.000		Recovery	=	96.64%	
50) Toluene-d8	10.34	98	668117	48.00	ug/l	0.00
Spiked Amount	50.000		Recovery	=	96.00%	
62) 4-Bromofluorobenzene	12.64	95	229569	48.58	ug/l	0.00
Spiked Amount	50.000		Recovery	=	97.16%	

Target Compounds

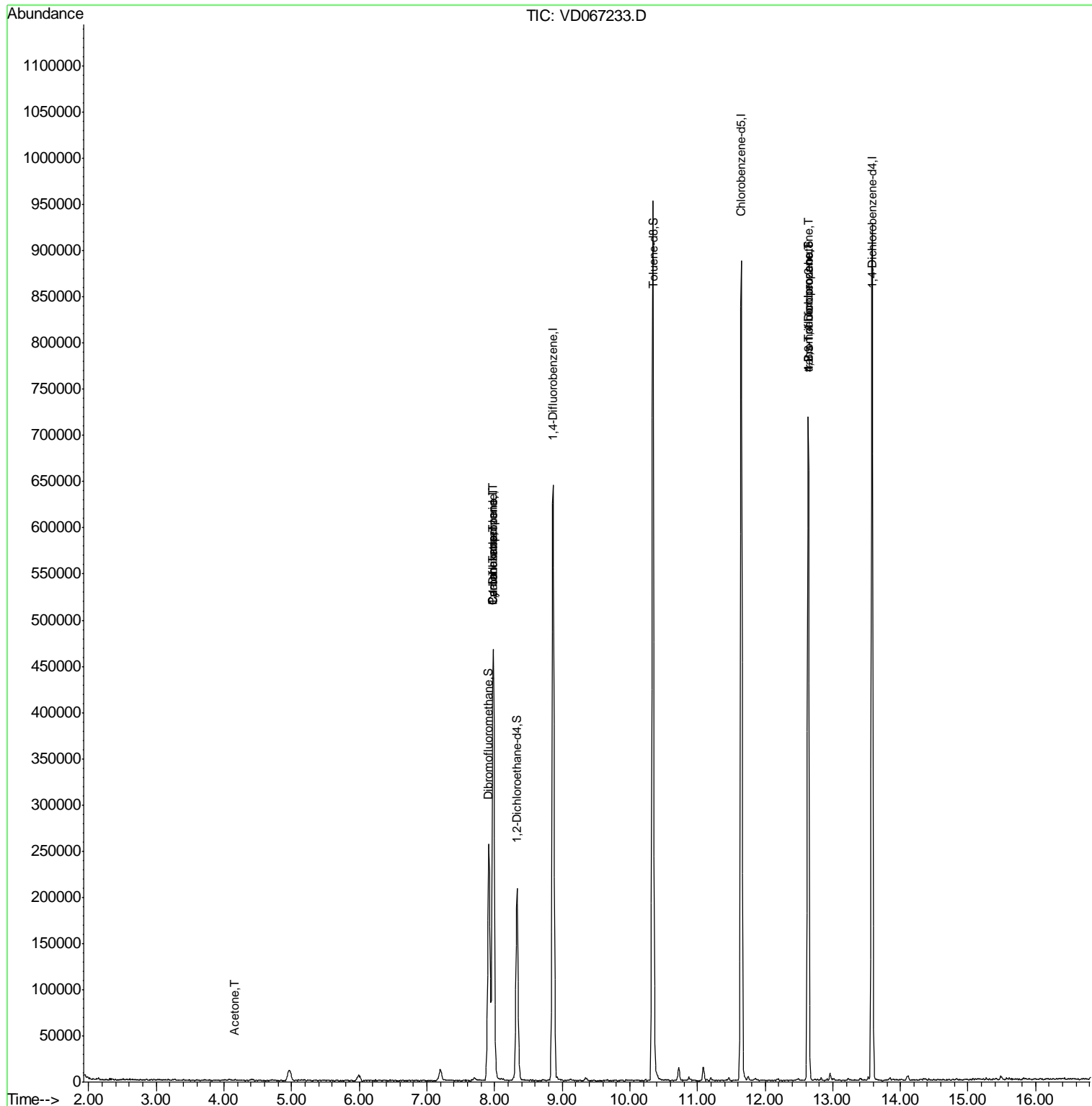
					Qvalue	
2) Dichlorodifluoromethane	1.99	85	632	Below Cal	#	5
5) Bromomethane	2.78	94	416	Below Cal		83
11) Tert butyl alcohol	5.23	59	243	Below Cal	#	72
16) Acetone	4.16	43	1237	2.320	ug/l #	42
20) Methylene Chloride	4.96	84	4840	Below Cal		94
26) 2,2-Dichloropropane	7.20	77	1318	Below Cal	#	64
31) Cyclohexane	7.97	56	7616	1.452	ug/l #	45
36) 1,1-Dichloropropene	7.98	75	24817	4.563	ug/l #	52
38) Carbon Tetrachloride	7.98	117	35706	6.068	ug/l #	15
76) 1,2,3-Trichloropropane	12.64	75	117547	53.057	ug/l #	100
81) trans-1,4-Dichloro-2-buten	12.64	75	117547	132.278	ug/l #	12

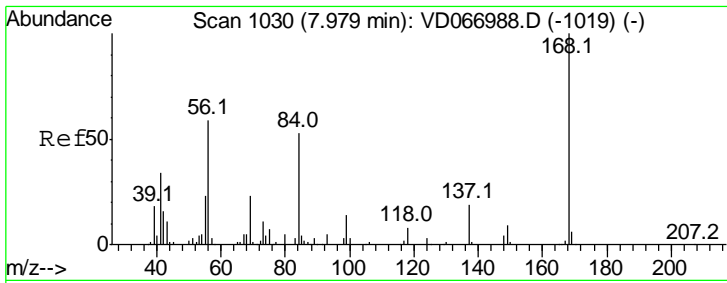
(#) = qualifier out of range (m) = manual integration (+) = signals summed

Data Path : Z:\VOASRV\HPCHEM1\MSVOA D\DATA\VD101220\
 Data File : VD067233.D
 Acq On : 12 Oct 2020 14:53
 Operator : VA/SY
 Sample : L4337-01
 Misc : 5.00G/5.00ml/MSVOA D/SOIL
 ALS Vial : 10 Sample Multiplier: 1

Instrument :
 MSVOA_D
 ClientSampled :
 TP-4

Quant Time: Oct 13 00:16:44 2020
 Quant Method : Z:\VOASRV\HPCHEM1\MSVOA_D\METHOD\82D100120S.M
 Quant Title : SW846 8260
 QLast Update : Thu Oct 01 15:19:17 2020
 Response via : Initial Calibration

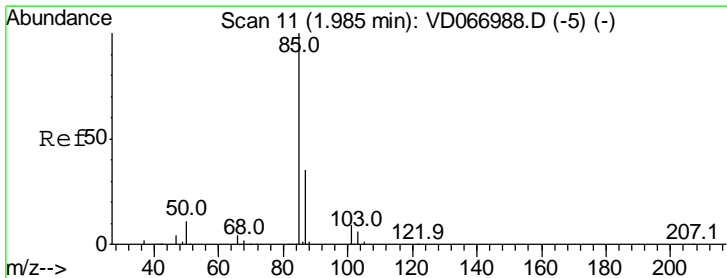
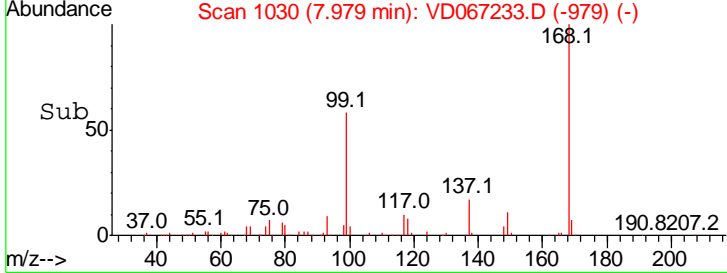
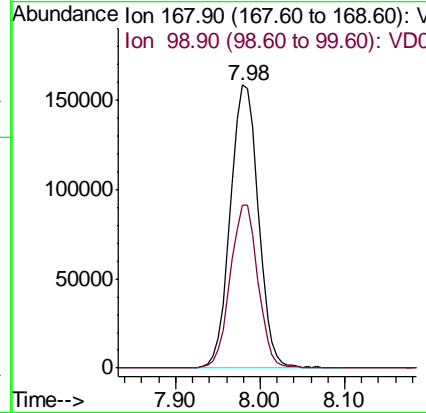
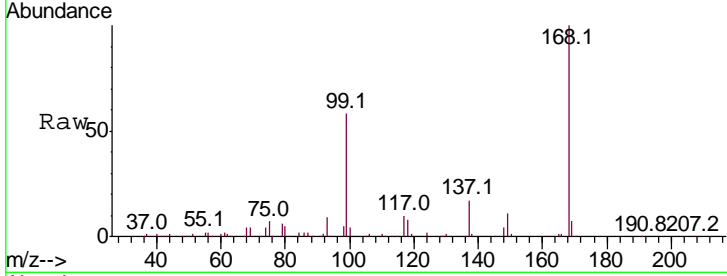




#1
 Pentafluorobenzene
 Concen: 50.000 ug/l
 RT: 7.98 min Scan# 1030
 Delta R.T. 0.00 min
 Lab File: VD067233.D
 Acq: 12 Oct 2020 14:53

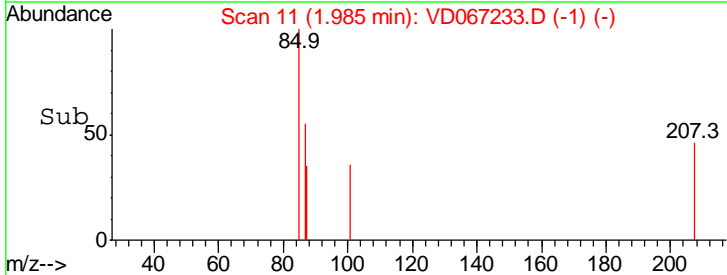
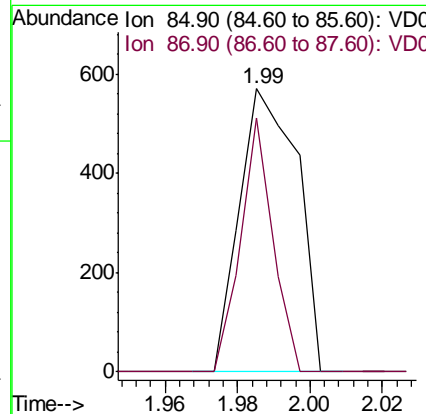
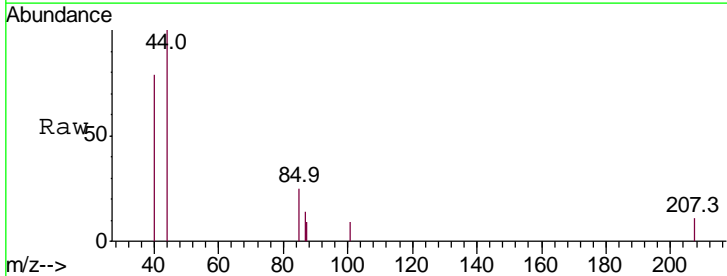
Instrument : MSVOA_D
 ClientSampled : TP-4

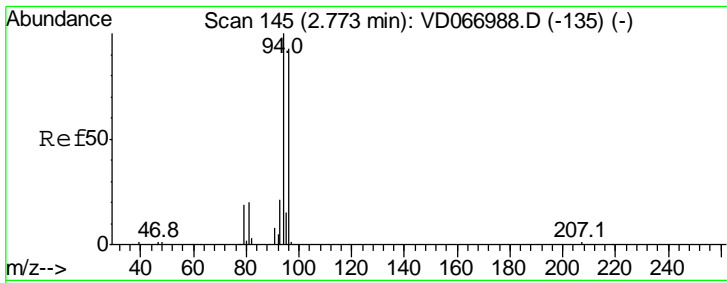
Tgt Ion: 168 Resp: 362599
 Ion Ratio Lower Upper
 168 100
 99 57.6 44.1 66.1



#2
 Dichlorodifluoromethane
 Concen: Below Cal
 RT: 1.99 min Scan# 11
 Delta R.T. 0.00 min
 Lab File: VD067233.D
 Acq: 12 Oct 2020 14:53

Tgt Ion: 85 Resp: 632
 Ion Ratio Lower Upper
 85 100
 87 89.7 17.3 52.0#

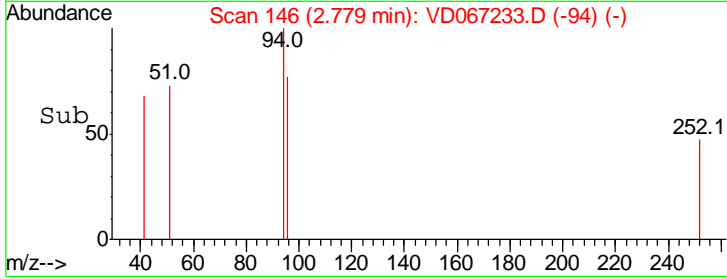
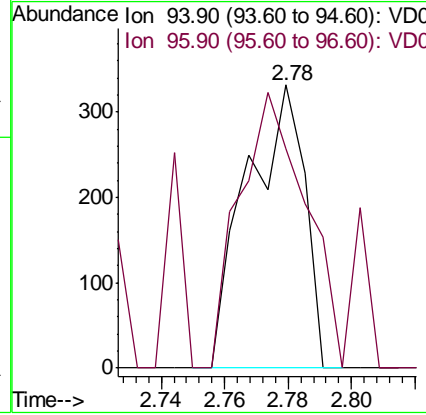
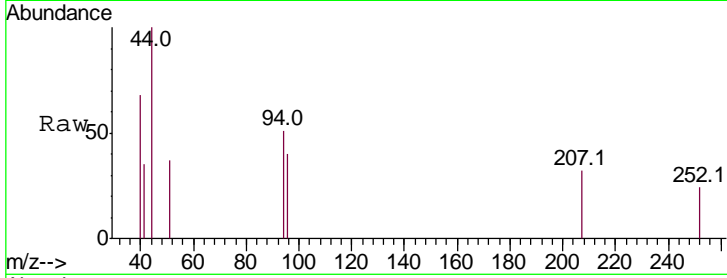




#5
 Bromomethane
 Concen: Below Cal
 RT: 2.78 min Scan# 146
 Delta R.T. 0.01 min
 Lab File: VD067233.D
 Acq: 12 Oct 2020 14:53

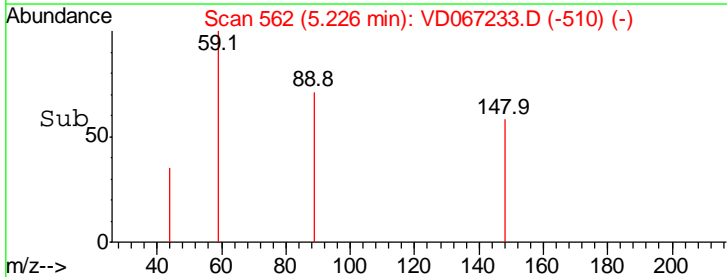
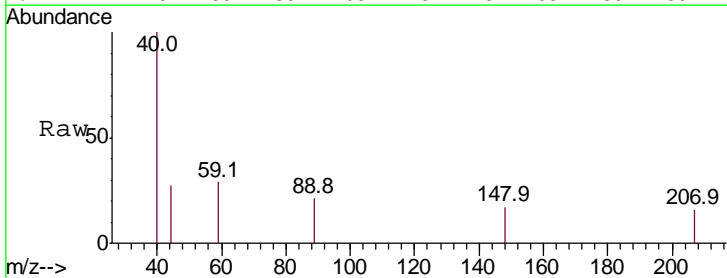
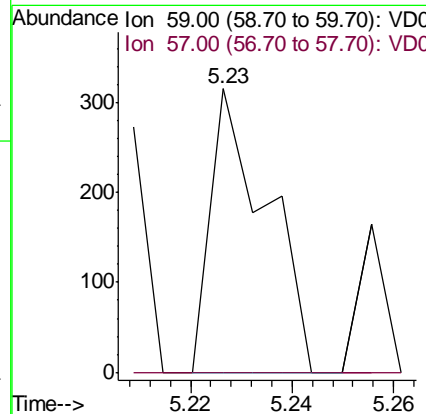
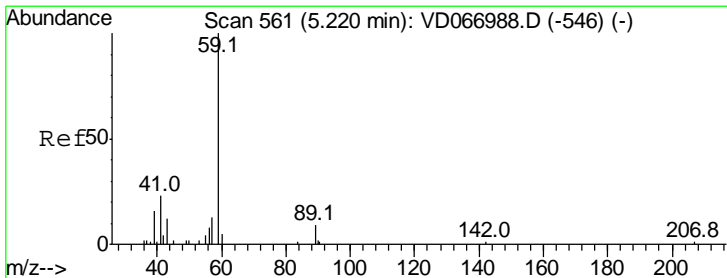
Instrument :
 MSVOA_D
 ClientSampled :
 TP-4

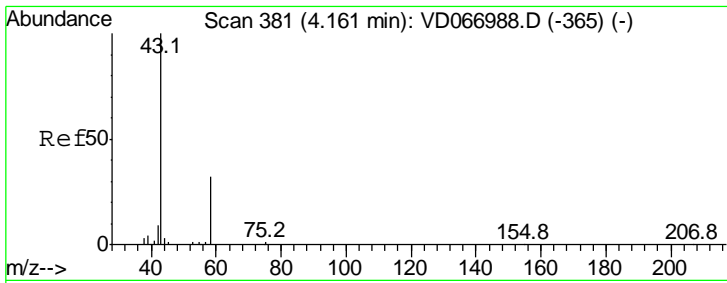
Tgt Ion: 94 Resp: 416
 Ion Ratio Lower Upper
 94 100
 96 77.4 74.6 112.0



#11
 Tert butyl alcohol
 Concen: Below Cal
 RT: 5.23 min Scan# 562
 Delta R.T. 0.01 min
 Lab File: VD067233.D
 Acq: 12 Oct 2020 14:53

Tgt Ion: 59 Resp: 243
 Ion Ratio Lower Upper
 59 100
 57 0.0 8.2 12.4#

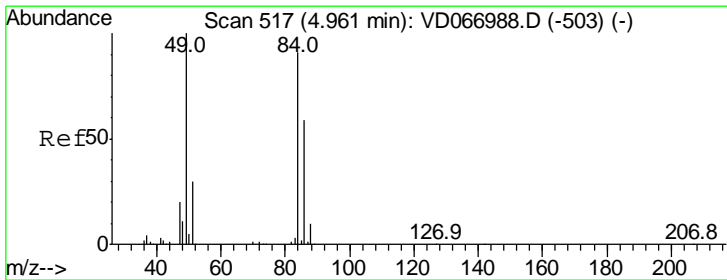
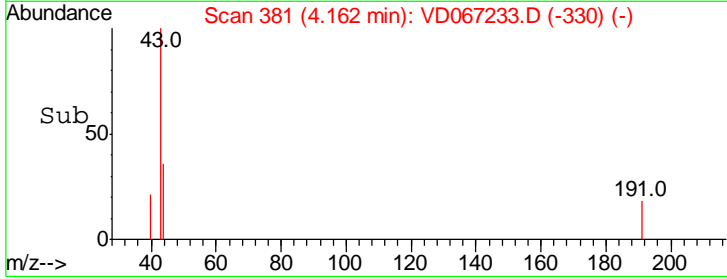
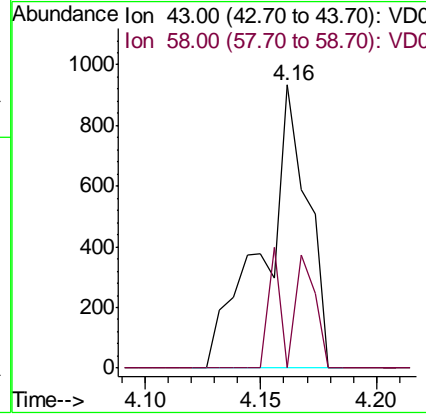
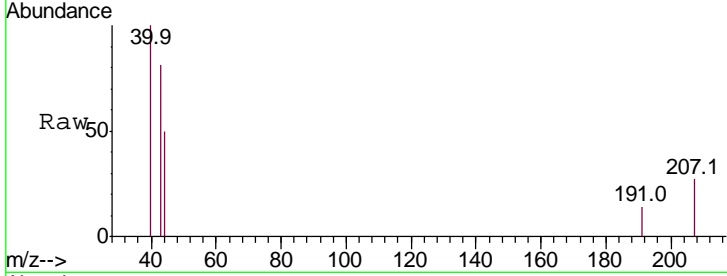




#16
 Acetone
 Concen: 2.320 ug/l
 RT: 4.16 min Scan# 381
 Delta R.T. 0.00 min
 Lab File: VD067233.D
 Acq: 12 Oct 2020 14:53

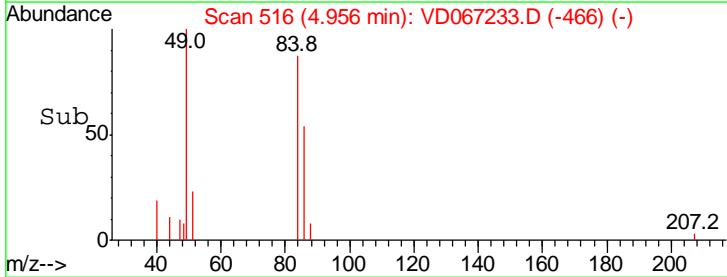
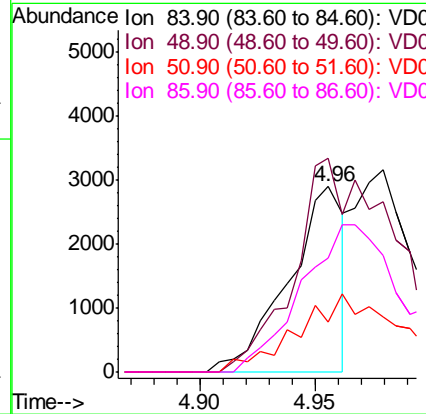
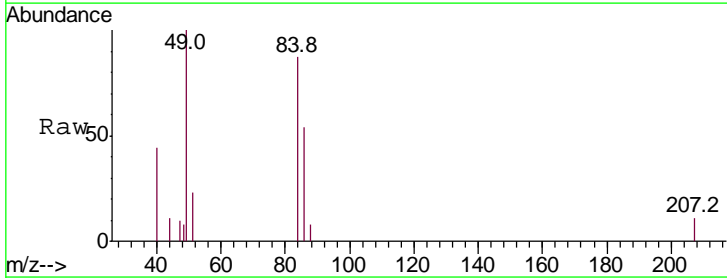
Instrument :
 MSVOA_D
 ClientSampled :
 TP-4

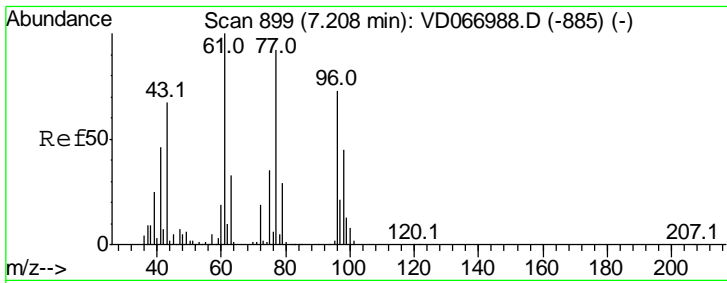
Tgt Ion: 43 Resp: 1237
 Ion Ratio Lower Upper
 43 100
 58 0.0 25.9 38.9#



#20
 Methylene Chloride
 Concen: Below Cal
 RT: 4.96 min Scan# 516
 Delta R.T. -0.01 min
 Lab File: VD067233.D
 Acq: 12 Oct 2020 14:53

Tgt Ion: 84 Resp: 4840
 Ion Ratio Lower Upper
 84 100
 49 115.2 88.2 132.2
 51 26.6 26.6 39.8
 86 61.7 52.1 78.1

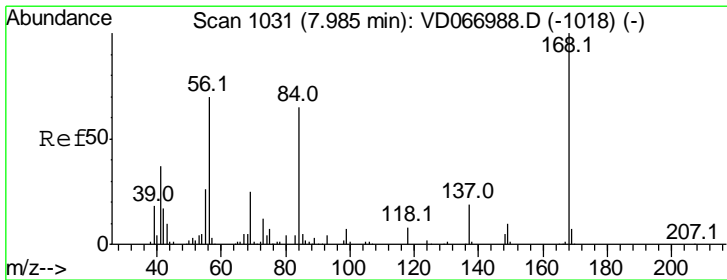
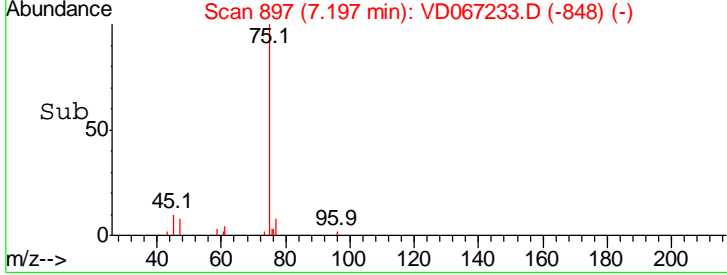
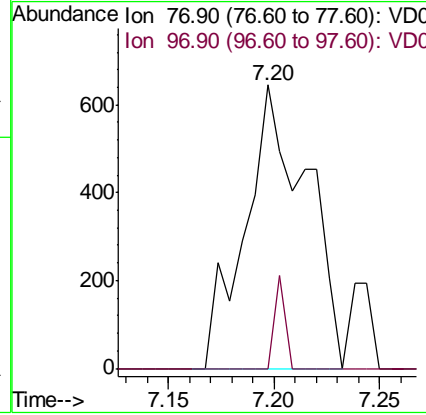
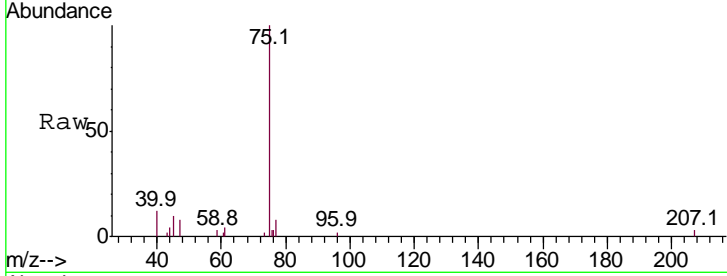




#26
 2,2-Dichloropropane
 Concen: Below Cal
 RT: 7.20 min Scan# 897
 Delta R.T. -0.01 min
 Lab File: VD067233.D
 Acq: 12 Oct 2020 14:53

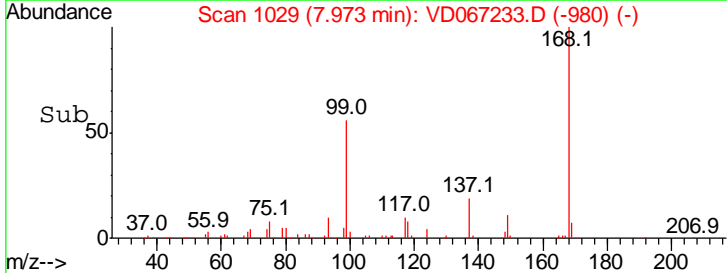
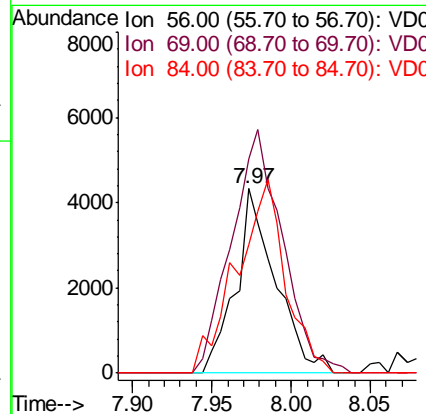
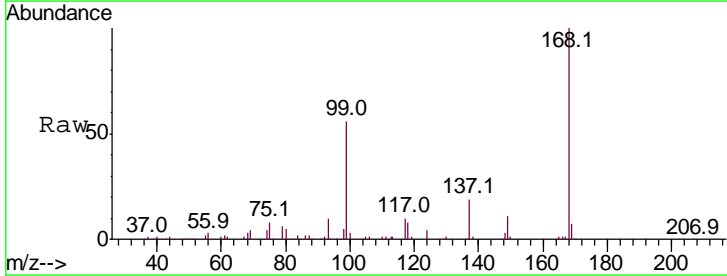
Instrument : MSVOA_D
 ClientSampled : TP-4

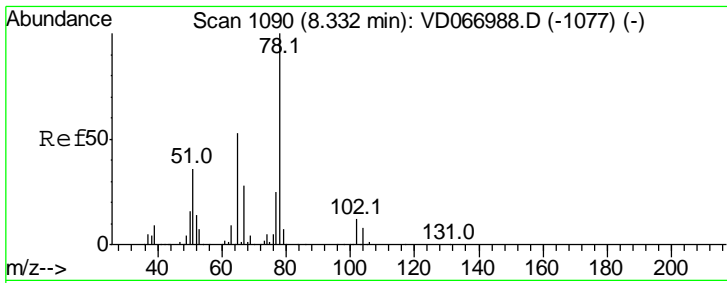
Tgt Ion	Resp	Lower	Upper
77	100		
97	5.6	11.4	34.2#



#31
 Cyclohexane
 Concen: 1.452 ug/l
 RT: 7.97 min Scan# 1029
 Delta R.T. -0.01 min
 Lab File: VD067233.D
 Acq: 12 Oct 2020 14:53

Tgt Ion	Resp	Lower	Upper
56	100		
69	116.0	29.0	43.6#
84	69.9	74.2	111.2#

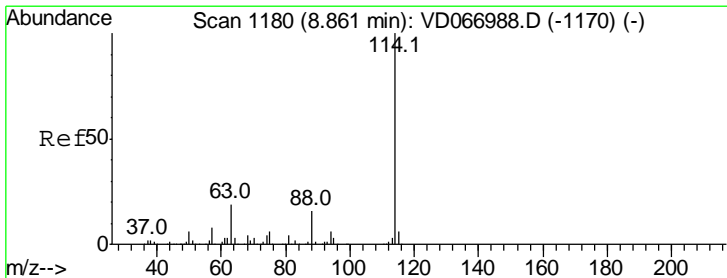
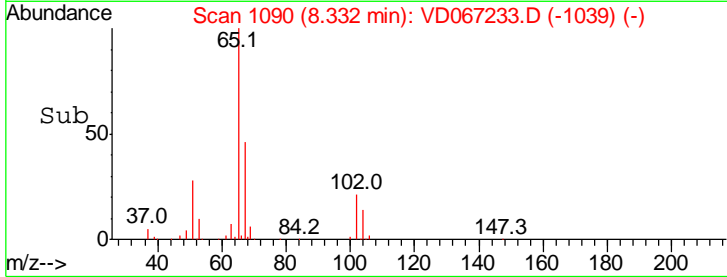
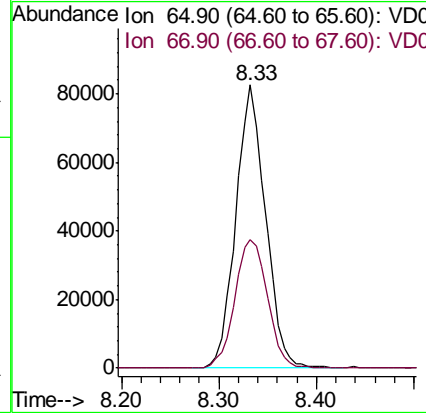
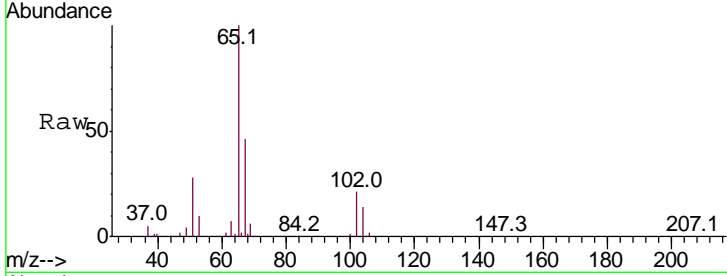




#33
 1,2-Dichloroethane-d4
 Concen: 50.172 ug/l
 RT: 8.33 min Scan# 1090
 Delta R.T. 0.00 min
 Lab File: VD067233.D
 Acq: 12 Oct 2020 14:53

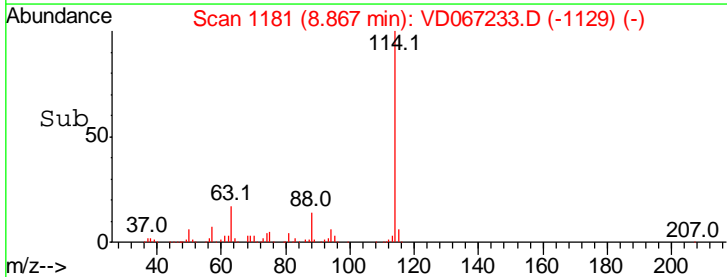
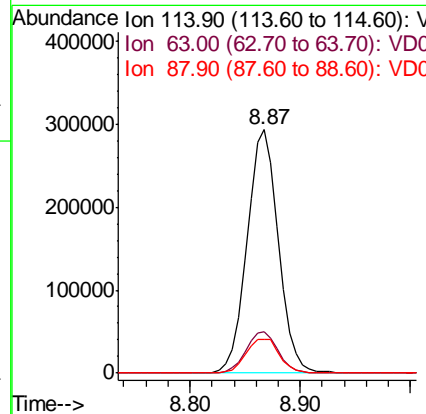
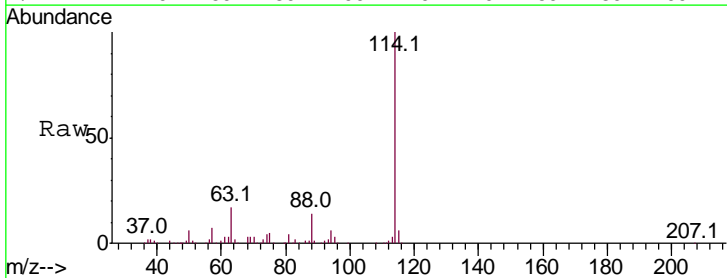
Instrument :
 MSVOA_D
 ClientSampled :
 TP-4

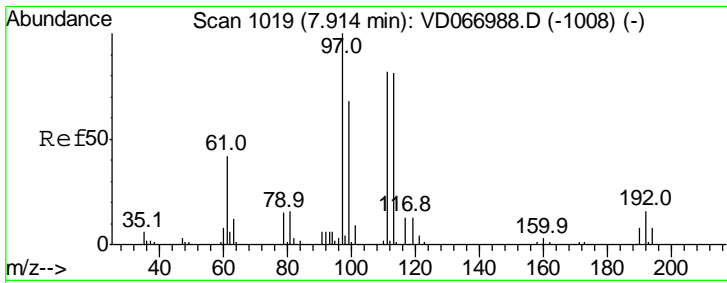
Tgt Ion	Resp	Lower	Upper
65	100		
67	49.9	0.0	106.8



#34
 1,4-Difluorobenzene
 Concen: 50.000 ug/l
 RT: 8.87 min Scan# 1181
 Delta R.T. 0.01 min
 Lab File: VD067233.D
 Acq: 12 Oct 2020 14:53

Tgt Ion	Resp	Lower	Upper
114	100		
63	17.0	0.0	38.4
88	13.9	0.0	31.2

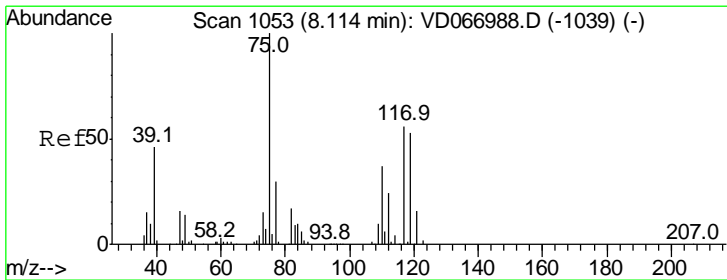
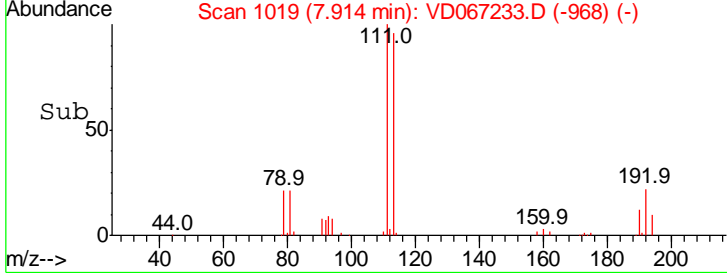
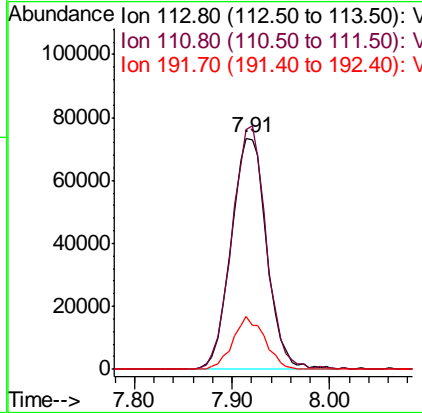
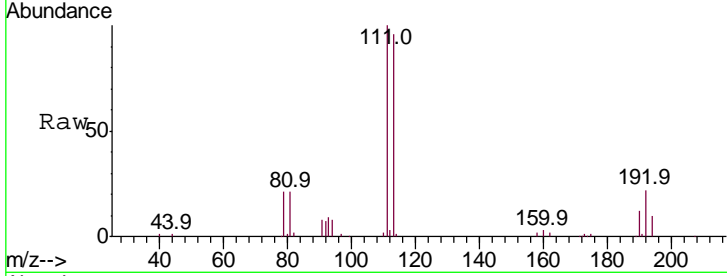




#35
 Dibromofluoromethane
 Concen: 48.316 ug/l
 RT: 7.91 min Scan# 1019
 Delta R.T. 0.00 min
 Lab File: VD067233.D
 Acq: 12 Oct 2020 14:53

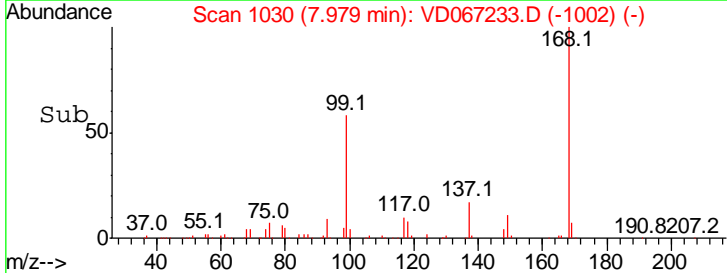
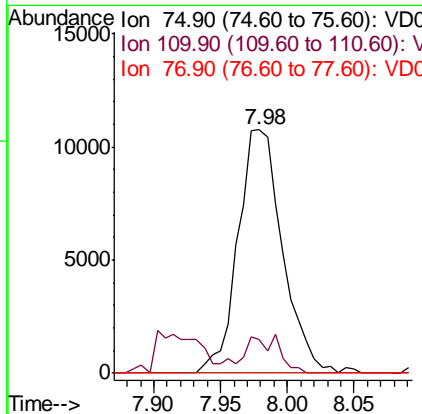
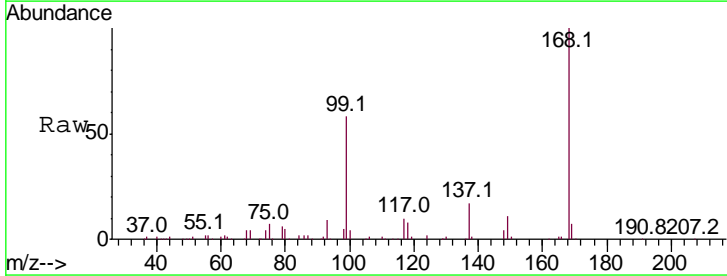
Instrument : MSVOA_D
 ClientSampled : TP-4

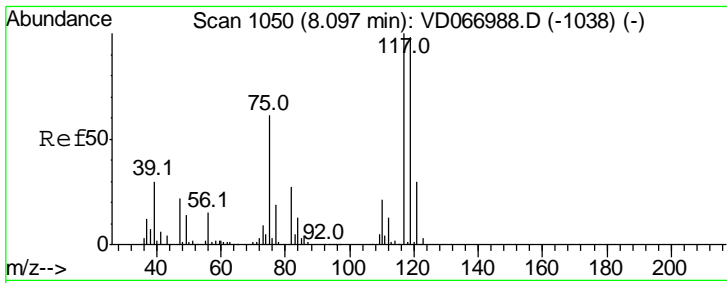
Tgt Ion	Resp	Lower	Upper
113	100		
111	102.2	83.0	124.4
192	20.7	15.5	23.3



#36
 1,1-Dichloropropene
 Concen: 4.563 ug/l
 RT: 7.98 min Scan# 1030
 Delta R.T. -0.14 min
 Lab File: VD067233.D
 Acq: 12 Oct 2020 14:53

Tgt Ion	Resp	Lower	Upper
75	100		
110	12.3	18.4	55.0#
77	0.0	24.8	37.2#

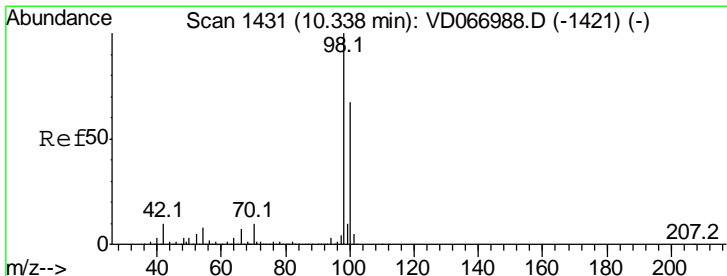
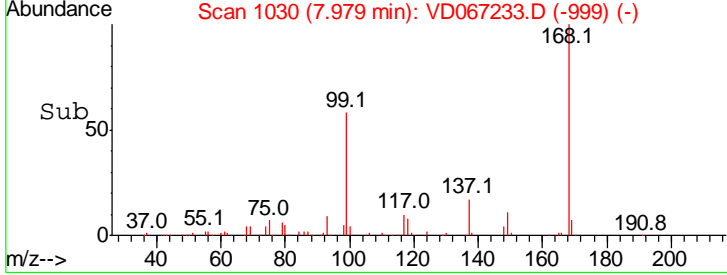
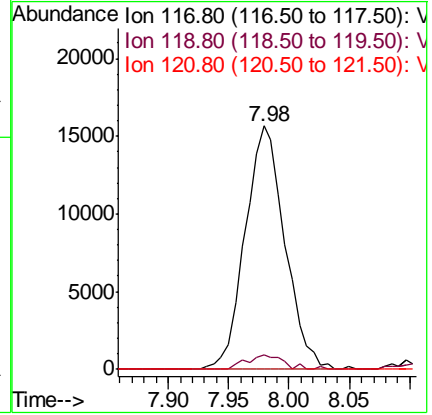
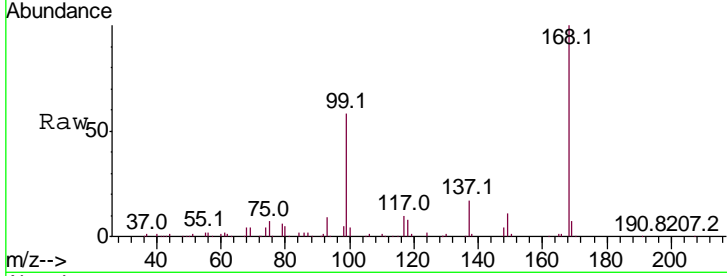




#38
 Carbon Tetrachloride
 Concen: 6.068 ug/l
 RT: 7.98 min Scan# 1030
 Delta R.T. -0.12 min
 Lab File: VD067233.D
 Acq: 12 Oct 2020 14:53

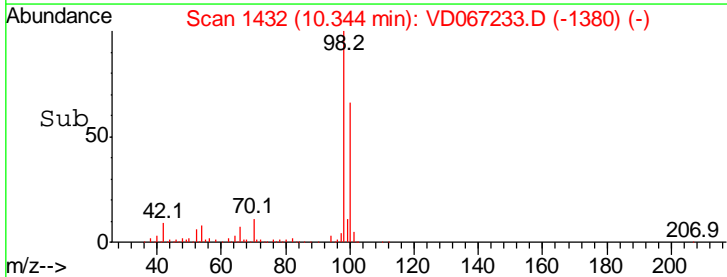
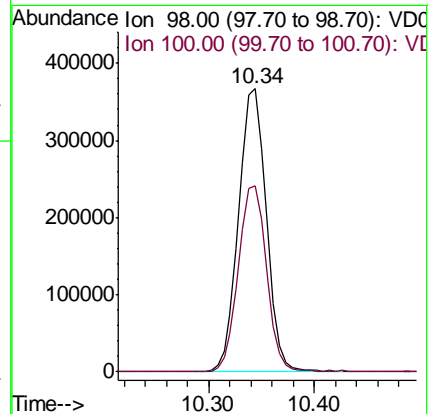
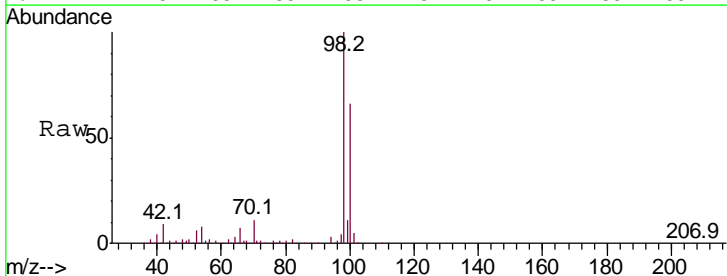
Instrument : MSVOA_D
 ClientSampled : TP-4

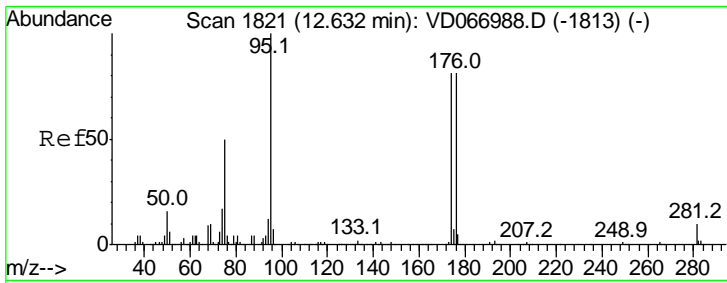
Tgt Ion	Resp	Lower	Upper
117	100		
119	5.8	78.7	118.1#
121	0.0	24.2	36.2#



#50
 Toluene-d8
 Concen: 47.998 ug/l
 RT: 10.34 min Scan# 1432
 Delta R.T. 0.01 min
 Lab File: VD067233.D
 Acq: 12 Oct 2020 14:53

Tgt Ion	Resp	Lower	Upper
98	100		
100	66.7	52.8	79.2

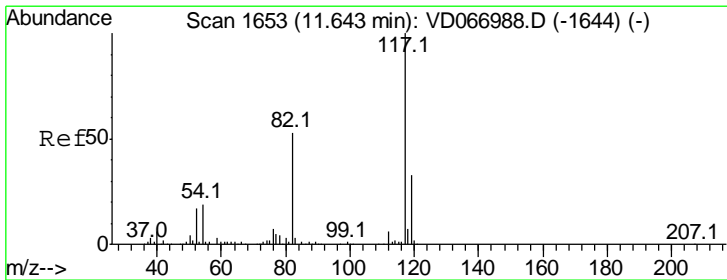
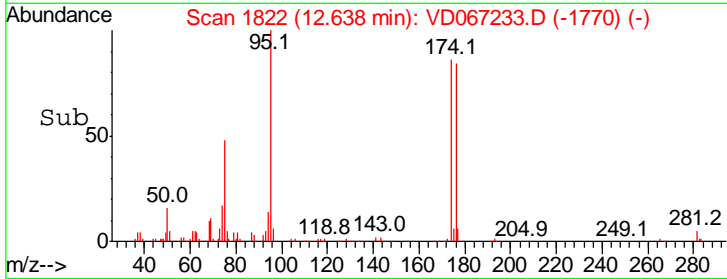
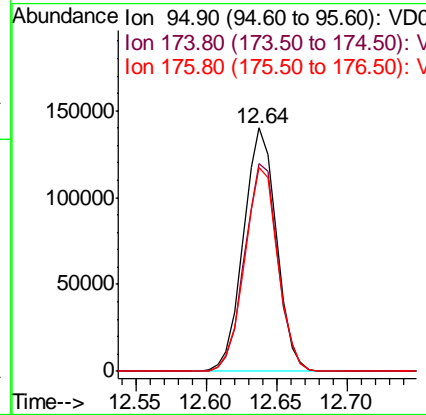
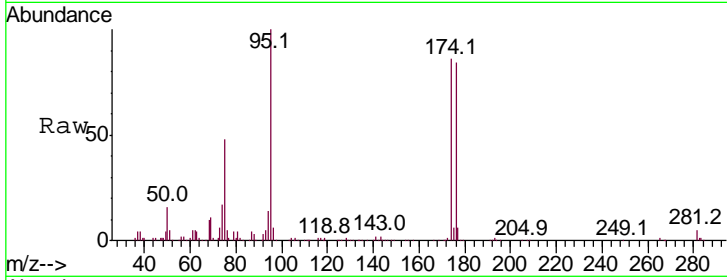




#62
 4-Bromofluorobenzene
 Concen: 48.581 ug/l
 RT: 12.64 min Scan# 1822
 Delta R.T. 0.01 min
 Lab File: VD067233.D
 Acq: 12 Oct 2020 14:53

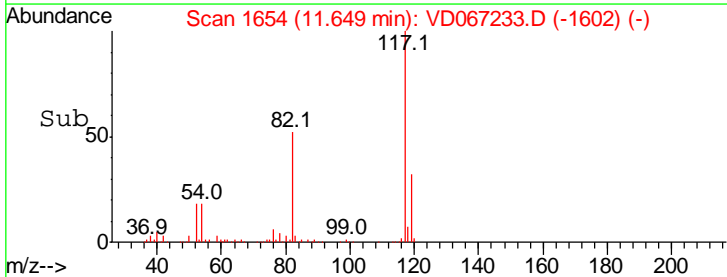
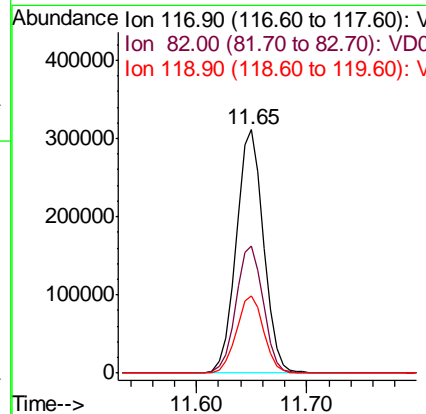
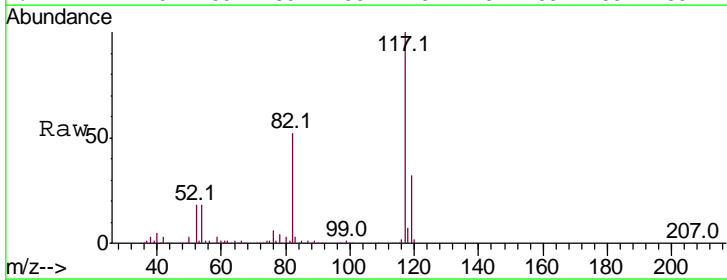
Instrument :
 MSVOA_D
 ClientSampled :
 TP-4

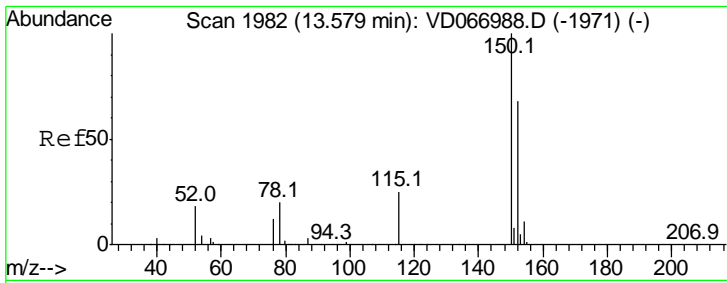
Tgt Ion	Resp	Lower	Upper
95	100		
174	86.2	0.0	167.6
176	84.0	0.0	162.4



#63
 Chlorobenzene-d5
 Concen: 50.000 ug/l
 RT: 11.65 min Scan# 1654
 Delta R.T. 0.01 min
 Lab File: VD067233.D
 Acq: 12 Oct 2020 14:53

Tgt Ion	Resp	Lower	Upper
117	100		
82	52.1	42.6	63.8
119	31.7	26.3	39.5

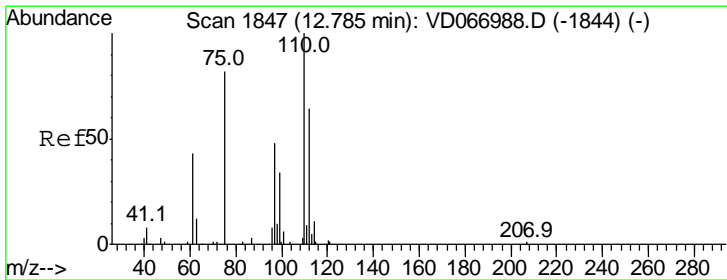
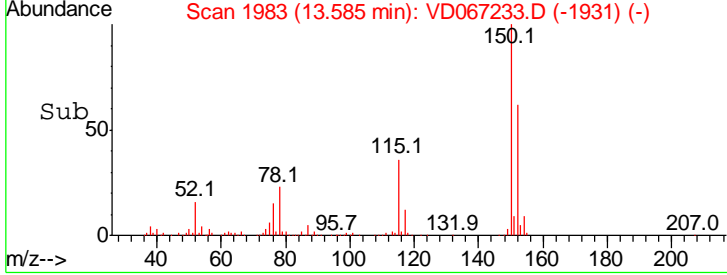
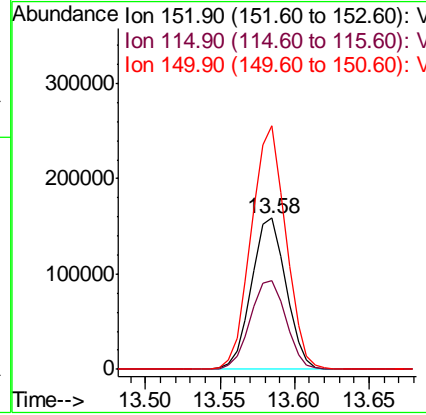
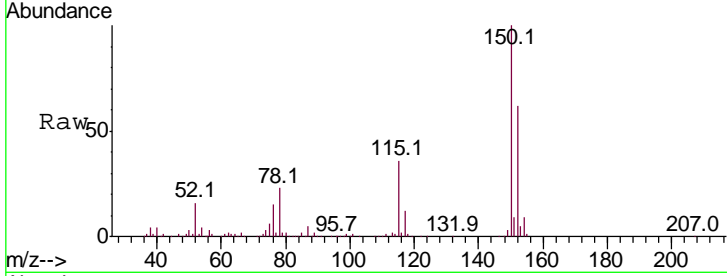




#72
 1,4-Dichlorobenzene-d4
 Concen: 50.000 ug/l
 RT: 13.58 min Scan# 1983
 Delta R.T. 0.01 min
 Lab File: VD067233.D
 Acq: 12 Oct 2020 14:53

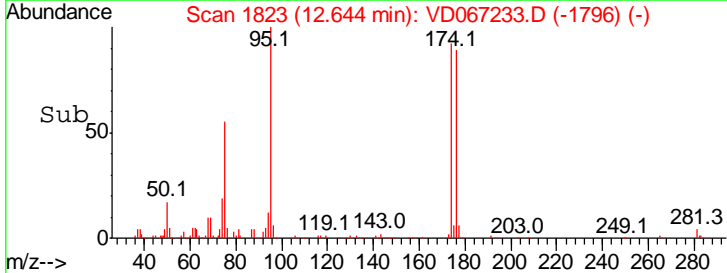
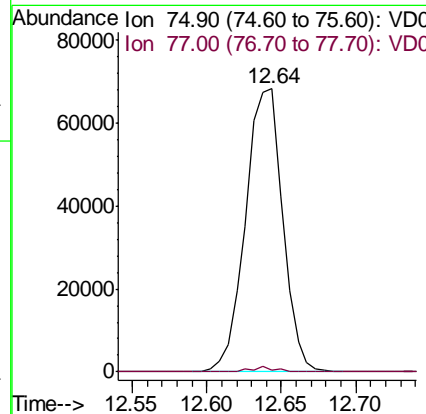
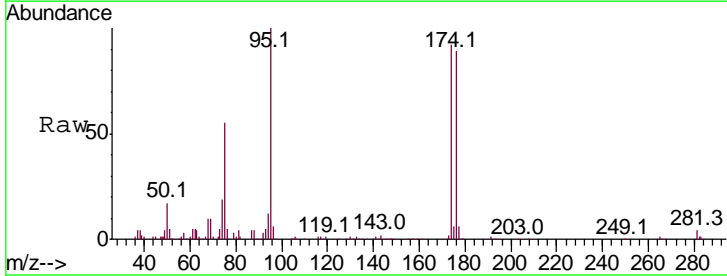
Instrument : MSVOA_D
 ClientSampled : TP-4

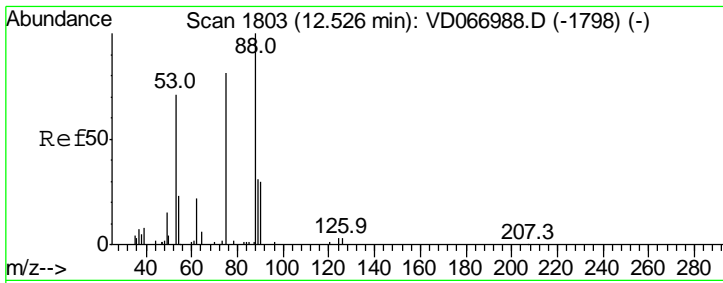
Tgt Ion	Resp	Lower	Upper
152	100		
115	60.5	29.6	88.8
150	160.4	0.0	344.8



#76
 1,2,3-Trichloropropane
 Concen: 53.057 ug/l
 RT: 12.64 min Scan# 1823
 Delta R.T. -0.14 min
 Lab File: VD067233.D
 Acq: 12 Oct 2020 14:53

Tgt Ion	Resp	Lower	Upper
75	100		
77	1.3	0.0	0.0#





#81
 trans-1,4-Dichloro-2-butene
 Concen: 132.278 ug/l
 RT: 12.64 min Scan# 1823
 Delta R.T. 0.12 min
 Lab File: VD067233.D
 Acq: 12 Oct 2020 14:53

Instrument :
 MSVOA_D
 ClientSampled :
 TP-4

Tot Ion	Ratio	Lower	Upper
75	100		
53	0.0	73.8	110.6#
89	0.3	38.9	58.3#

