

Data Path : Z:\voasrv\HPCHEM1\MSVOA_D\Data\VD101321\
 Data File : VD070705.D
 Acq On : 13 Oct 2021 18:43
 Operator : VA/SY
 Sample : M4193-02
 Misc : 5.07G/5.00ml/MSVOA_D/SOIL
 ALS Vial : 15 Sample Multiplier: 1

Instrument :
 MSVOA_D
 ClientSampleId :

Quant Time: Oct 14 04:05:35 2021
 Quant Method : Z:\voasrv\HPCHEM1\MSVOA_D\Method\82D100521S.M
 Quant Title : SW846 8260
 QLast Update : Wed Oct 06 09:10:31 2021
 Response via : Initial Calibration

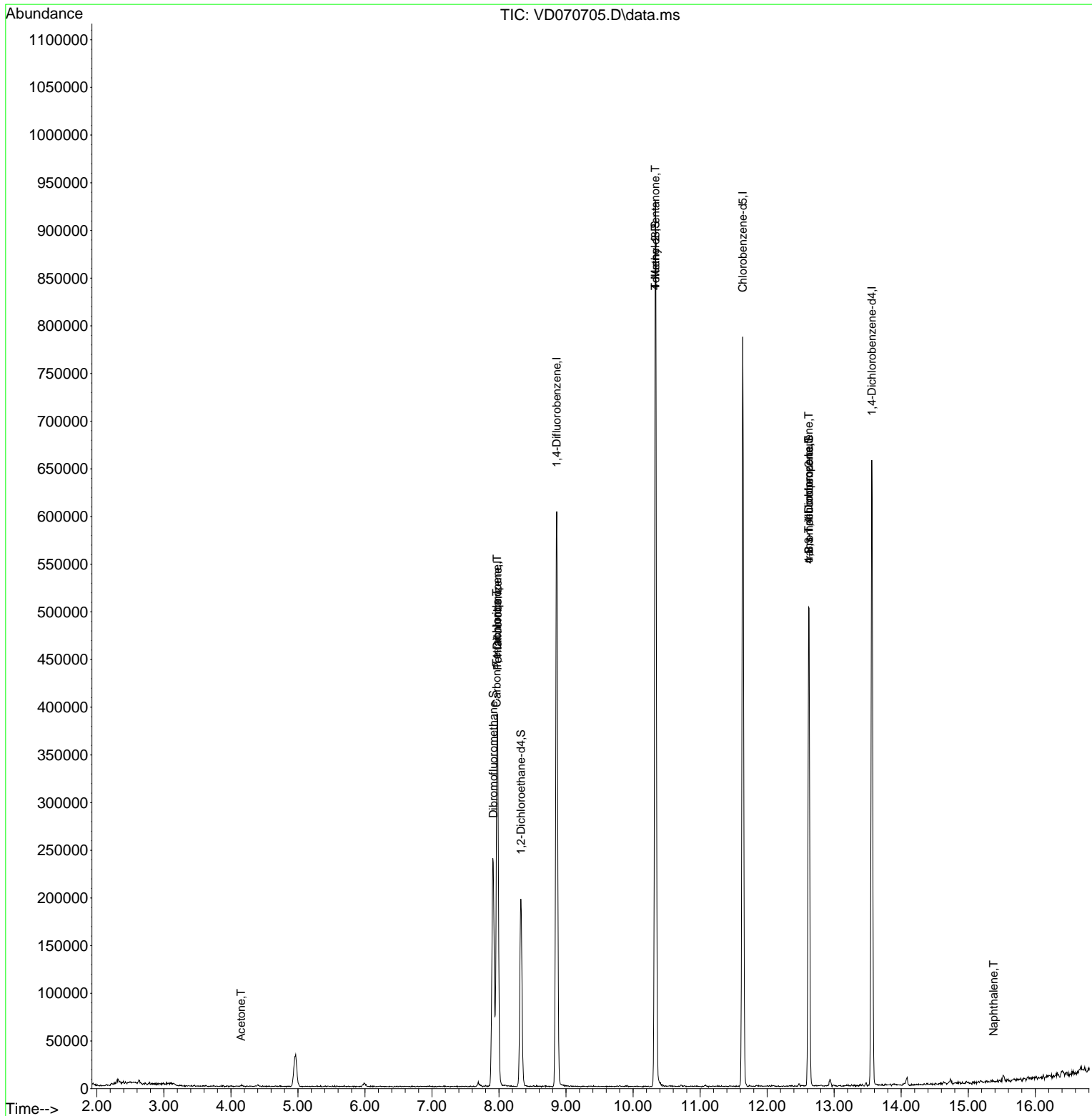
| Compound | R.T. | QIon | Response | Conc | Units | Dev(Min) |
|-------------------------------|--------|-------|----------|-----------|--------|----------|
| ----- | | | | | | |
| Internal Standards | | | | | | |
| 1) Pentafluorobenzene | 7.979 | 168 | 290589 | 50.000 | ug/l | 0.00 |
| 34) 1,4-Difluorobenzene | 8.861 | 114 | 541099 | 50.000 | ug/l | 0.00 |
| 63) Chlorobenzene-d5 | 11.638 | 117 | 478449 | 50.000 | ug/l | 0.00 |
| 72) 1,4-Dichlorobenzene-d4 | 13.561 | 152 | 181402 | 50.000 | ug/l | 0.00 |
| System Monitoring Compounds | | | | | | |
| 33) 1,2-Dichloroethane-d4 | 8.326 | 65 | 157582 | 46.079 | ug/l | 0.00 |
| Spiked Amount | 50.000 | Range | 50 - 163 | Recovery | = | 92.160% |
| 35) Dibromofluoromethane | 7.914 | 113 | 180762 | 50.246 | ug/l | 0.00 |
| Spiked Amount | 50.000 | Range | 54 - 147 | Recovery | = | 100.500% |
| 50) Toluene-d8 | 10.332 | 98 | 676803 | 49.212 | ug/l | 0.00 |
| Spiked Amount | 50.000 | Range | 49 - 140 | Recovery | = | 98.420% |
| 62) 4-Bromofluorobenzene | 12.626 | 95 | 187131 | 40.711 | ug/l | 0.00 |
| Spiked Amount | 50.000 | Range | 25 - 144 | Recovery | = | 81.420% |
| Target Compounds | | | | | | |
| | | | | | | Qvalue |
| 5) Bromomethane | 2.785 | 94 | 1093 | Below Cal | | 82 |
| 16) Acetone | 4.150 | 43 | 626 | 1.078 | ug/l # | 40 |
| 20) Methylene Chloride | 4.967 | 84 | 28821 | Below Cal | | 91 |
| 36) 1,1-Dichloropropene | 7.973 | 75 | 24245 | 4.219 | ug/l # | 51 |
| 38) Carbon Tetrachloride | 7.967 | 117 | 31771 | 5.283 | ug/l # | 17 |
| 51) 4-Methyl-2-Pentanone | 10.332 | 43 | 2553 | 1.414 | ug/l # | 1 |
| 76) 1,2,3-Trichloropropane | 12.620 | 75 | 86823 | 52.880 | ug/l # | 100 |
| 81) trans-1,4-Dichloro-2-b... | 12.620 | 75 | 86823 | 117.403 | ug/l # | 17 |
| 95) Naphthalene | 15.379 | 128 | 655 | 2.598 | ug/l # | 69 |
| ----- | | | | | | |

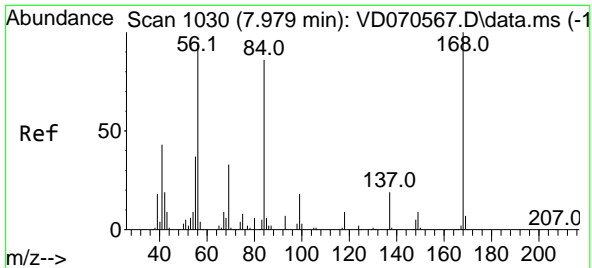
(#) = qualifier out of range (m) = manual integration (+) = signals summed

Data Path : Z:\voasrv\HPCHEM1\MSVOA_D\Data\VD101321\
 Data File : VD070705.D
 Acq On : 13 Oct 2021 18:43
 Operator : VA/SY
 Sample : M4193-02
 Misc : 5.07G/5.00ml/MSVOA_D/SOIL
 ALS Vial : 15 Sample Multiplier: 1

Instrument :
 MSVOA_D
 ClientSampled :

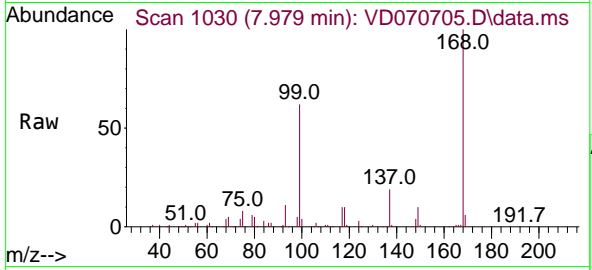
Quant Time: Oct 14 04:05:35 2021
 Quant Method : Z:\voasrv\HPCHEM1\MSVOA_D\Method\82D100521S.M
 Quant Title : SW846 8260
 QLast Update : Wed Oct 06 09:10:31 2021
 Response via : Initial Calibration



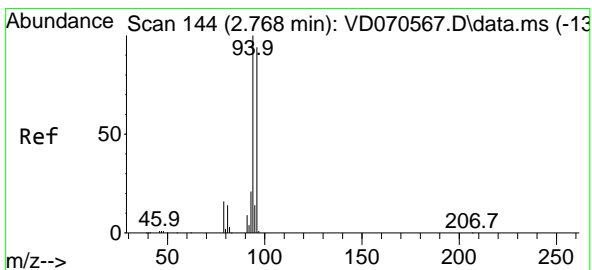
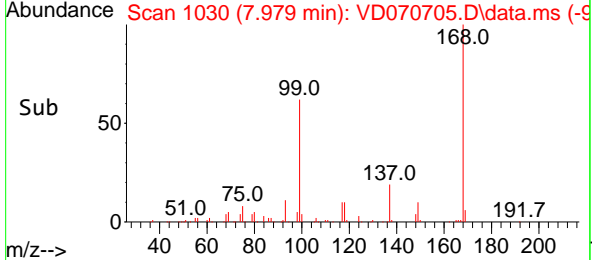
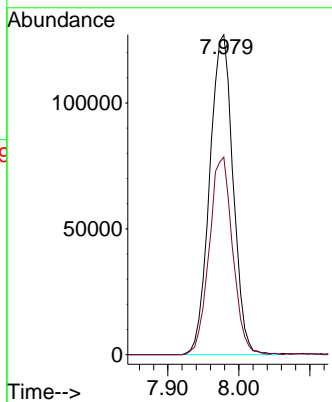


#1
 Pentafluorobenzene
 Concen: 50.000 ug/l
 RT: 7.979 min Scan# 1030
 Delta R.T. -0.000 min
 Lab File: VD070705.D
 Acq: 13 Oct 2021 18:43

Instrument :
 MSVOA_D
 ClientSampled :

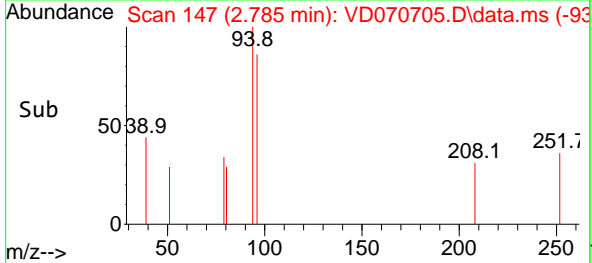
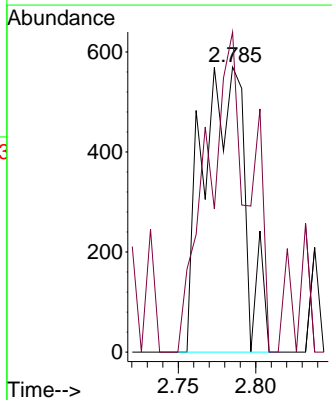
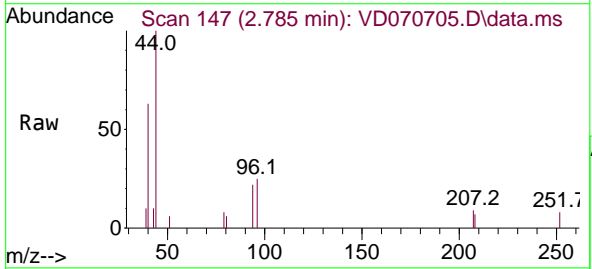


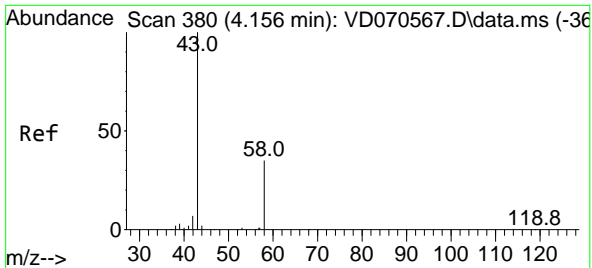
Tgt Ion:168 Resp: 290589
 Ion Ratio Lower Upper
 168 100
 99 61.8 51.4 77.0



#5
 Bromomethane
 Concen: Below Cal
 RT: 2.785 min Scan# 147
 Delta R.T. 0.017 min
 Lab File: VD070705.D
 Acq: 13 Oct 2021 18:43

Tgt Ion: 94 Resp: 1093
 Ion Ratio Lower Upper
 94 100
 96 112.3 75.5 113.3

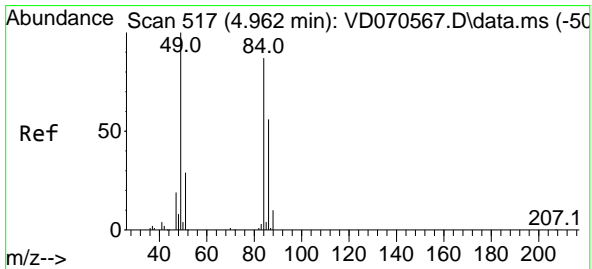
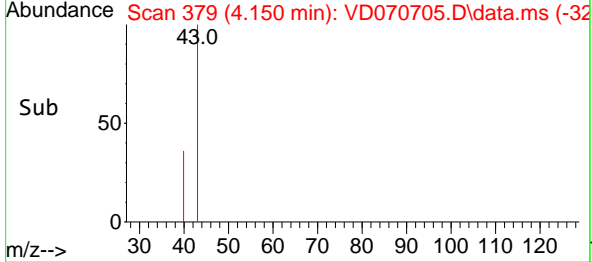
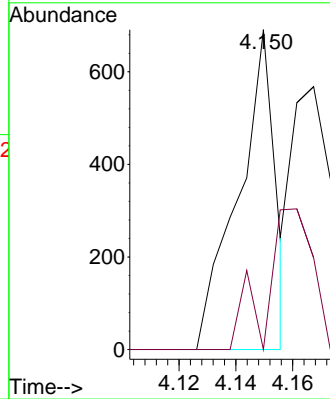
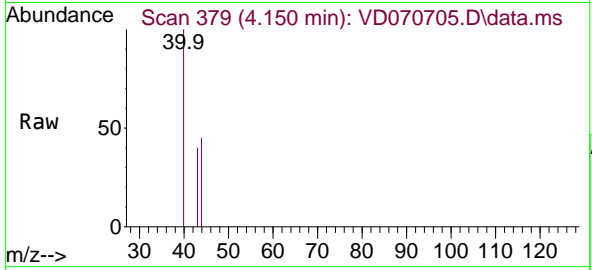




#16
 Acetone
 Concen: 1.078 ug/l
 RT: 4.150 min Scan# 379
 Delta R.T. -0.006 min
 Lab File: VD070705.D
 Acq: 13 Oct 2021 18:43

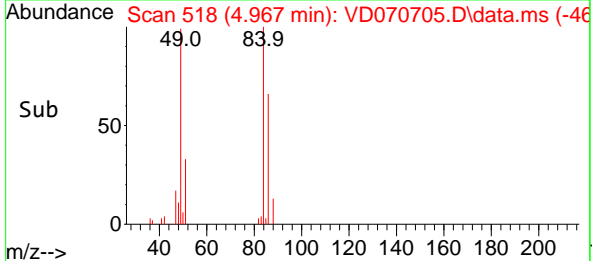
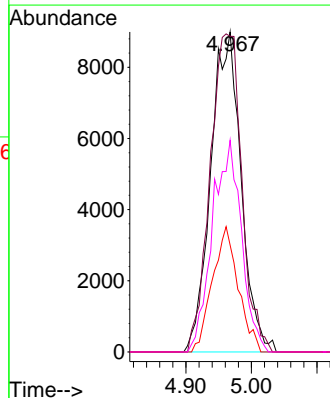
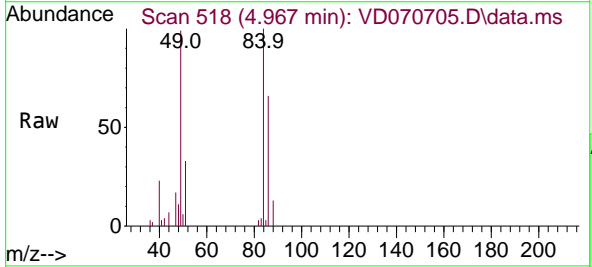
Instrument :
 MSVOA_D
 ClientSampled :

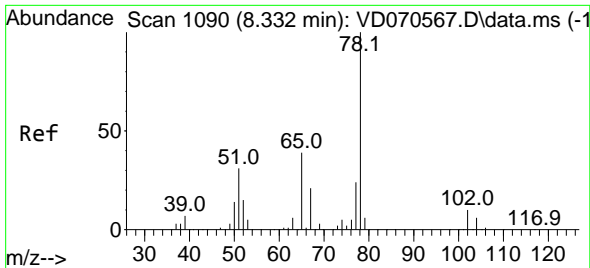
Tgt Ion: 43 Resp: 626
 Ion Ratio Lower Upper
 43 100
 58 0.0 28.2 42.2#



#20
 Methylene Chloride
 Concen: Below Cal
 RT: 4.967 min Scan# 518
 Delta R.T. 0.005 min
 Lab File: VD070705.D
 Acq: 13 Oct 2021 18:43

Tgt Ion: 84 Resp: 28821
 Ion Ratio Lower Upper
 84 100
 49 98.6 91.4 137.2
 51 33.4 26.7 40.1
 86 66.2 50.8 76.2

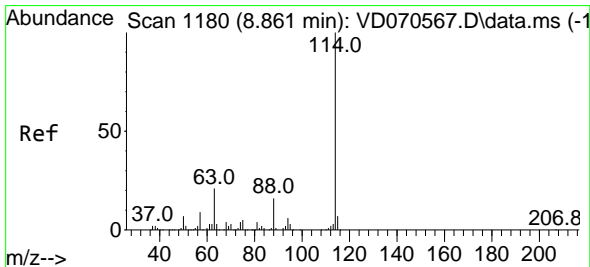
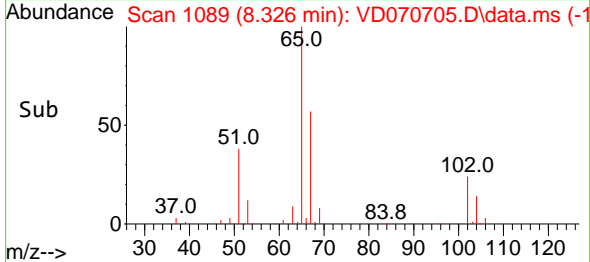
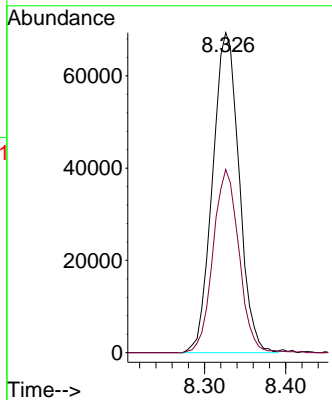
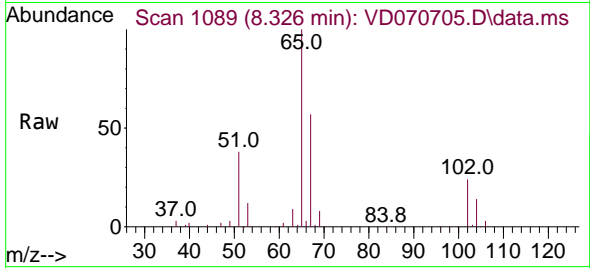




#33
 1,2-Dichloroethane-d4
 Concen: 46.079 ug/l
 RT: 8.326 min Scan# 1089
 Delta R.T. -0.006 min
 Lab File: VD070705.D
 Acq: 13 Oct 2021 18:43

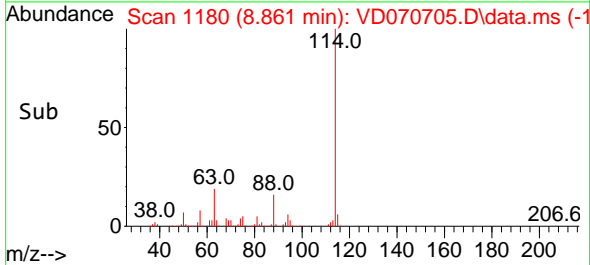
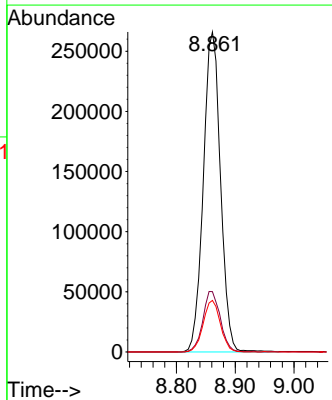
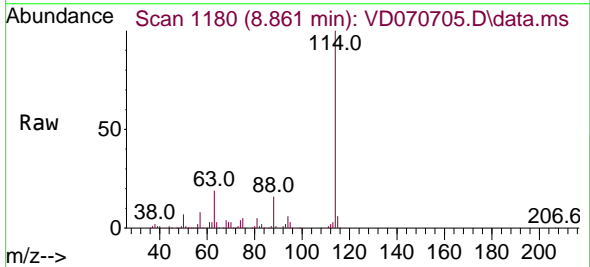
Instrument :
 MSVOA_D
 ClientSampled :

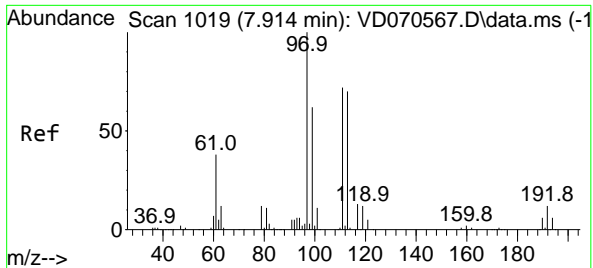
Tgt Ion: 65 Resp: 157582
 Ion Ratio Lower Upper
 65 100
 67 56.0 0.0 110.2



#34
 1,4-Difluorobenzene
 Concen: 50.000 ug/l
 RT: 8.861 min Scan# 1180
 Delta R.T. -0.000 min
 Lab File: VD070705.D
 Acq: 13 Oct 2021 18:43

Tgt Ion:114 Resp: 541099
 Ion Ratio Lower Upper
 114 100
 63 18.9 0.0 41.8
 88 16.1 0.0 32.6

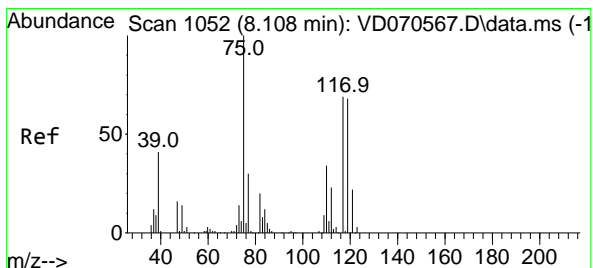
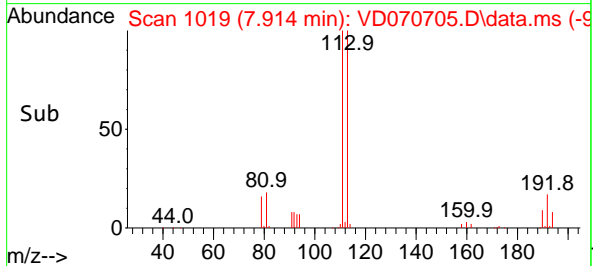
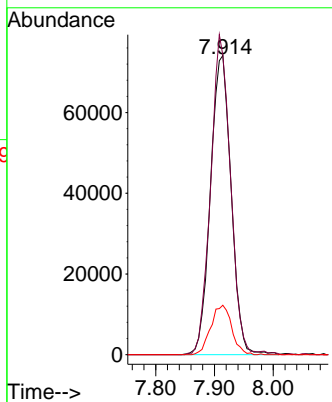
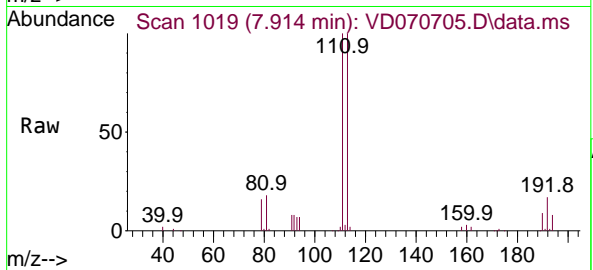




#35
 Dibromofluoromethane
 Concen: 50.246 ug/l
 RT: 7.914 min Scan# 1019
 Delta R.T. -0.000 min
 Lab File: VD070705.D
 Acq: 13 Oct 2021 18:43

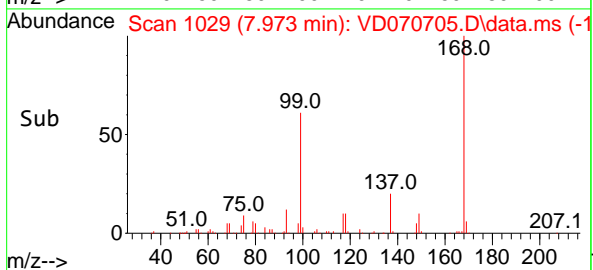
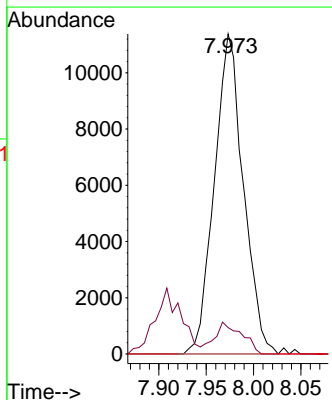
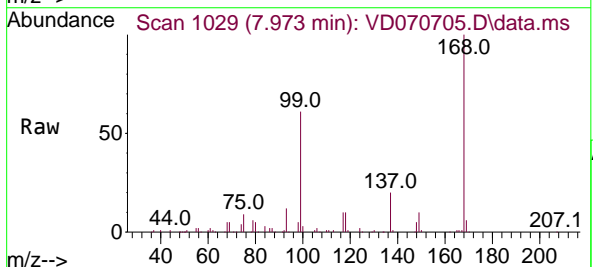
Instrument :
 MSVOA_D
 ClientSampled :

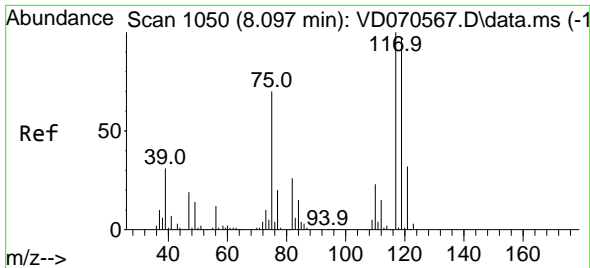
| Tgt Ion | Resp | Lower | Upper |
|---------|-------|-------|-------|
| 113 | 100 | | |
| 111 | 102.3 | 83.1 | 124.7 |
| 192 | 16.7 | 12.7 | 19.1 |



#36
 1,1-Dichloropropene
 Concen: 4.219 ug/l
 RT: 7.973 min Scan# 1029
 Delta R.T. -0.135 min
 Lab File: VD070705.D
 Acq: 13 Oct 2021 18:43

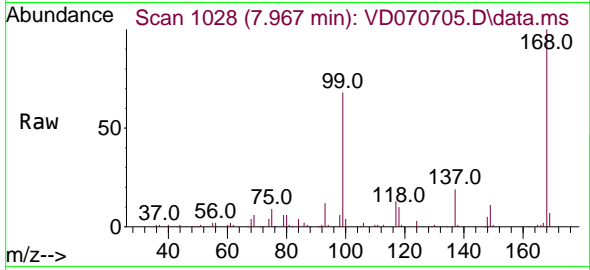
| Tgt Ion | Resp | Lower | Upper |
|---------|------|-------|-------|
| 75 | 100 | | |
| 110 | 9.4 | 17.2 | 51.6# |
| 77 | 0.0 | 24.2 | 36.4# |



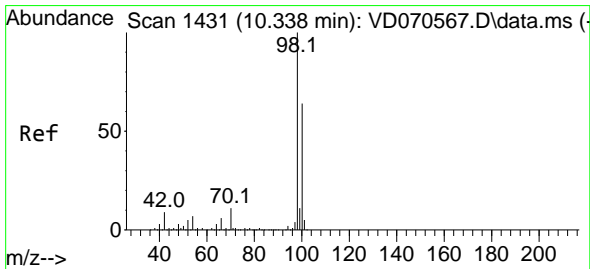
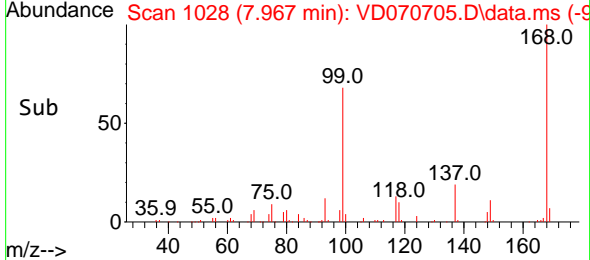
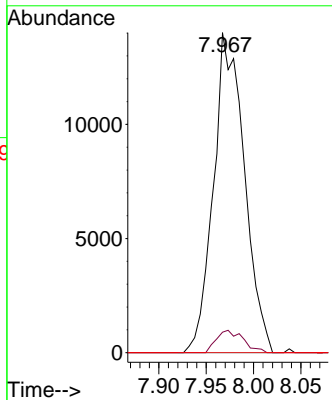


#38
 Carbon Tetrachloride
 Concen: 5.283 ug/l
 RT: 7.967 min Scan# 1028
 Delta R.T. -0.130 min
 Lab File: VD070705.D
 Acq: 13 Oct 2021 18:43

Instrument :
 MSVOA_D
 ClientSampled :

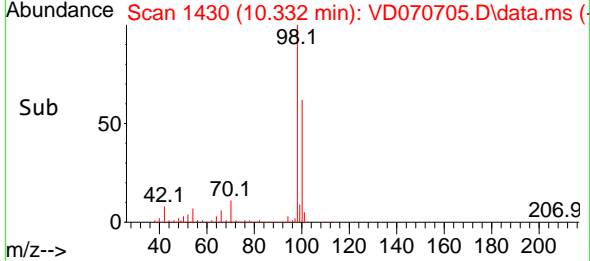
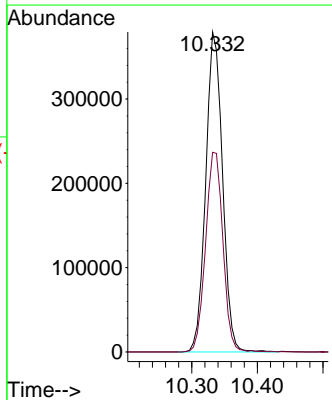
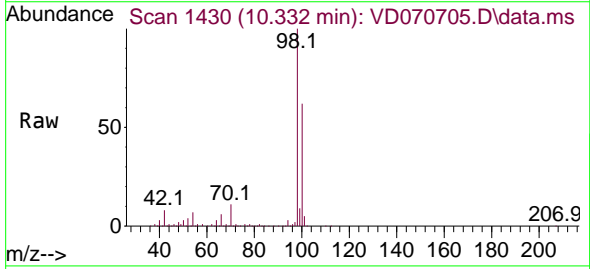


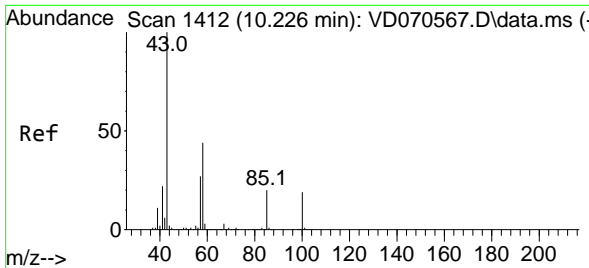
Tgt Ion:117 Resp: 31771
 Ion Ratio Lower Upper
 117 100
 119 6.4 77.4 116.0#
 121 0.0 25.4 38.0#



#50
 Toluene-d8
 Concen: 49.212 ug/l
 RT: 10.332 min Scan# 1430
 Delta R.T. -0.006 min
 Lab File: VD070705.D
 Acq: 13 Oct 2021 18:43

Tgt Ion: 98 Resp: 676803
 Ion Ratio Lower Upper
 98 100
 100 64.5 52.2 78.4

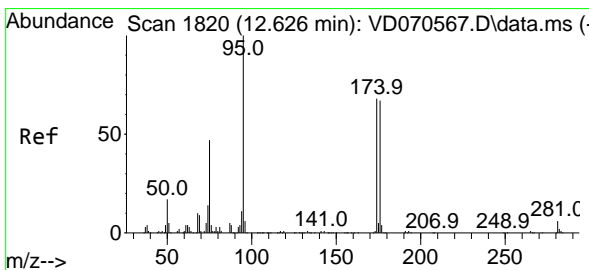
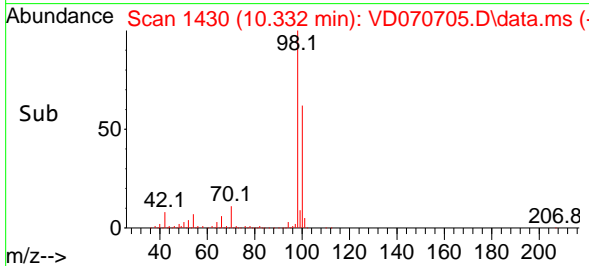
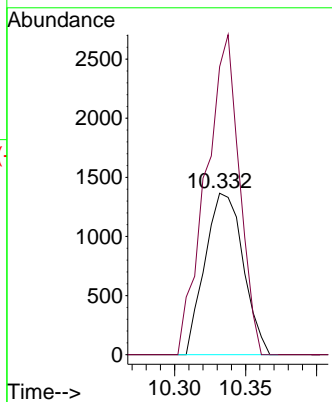
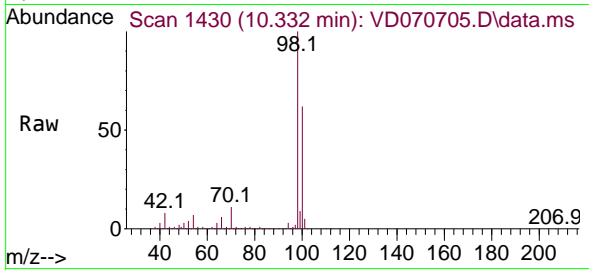




#51
 4-Methyl-2-Pentanone
 Concen: 1.414 ug/l
 RT: 10.332 min Scan# 1430
 Delta R.T. 0.106 min
 Lab File: VD070705.D
 Acq: 13 Oct 2021 18:43

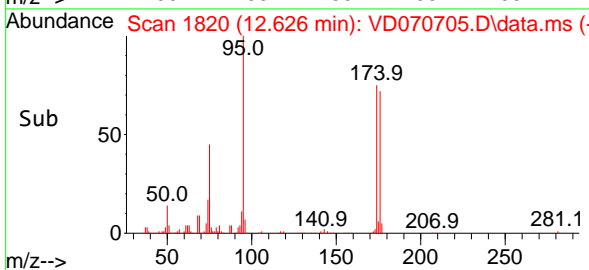
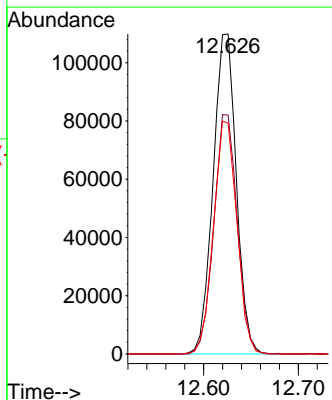
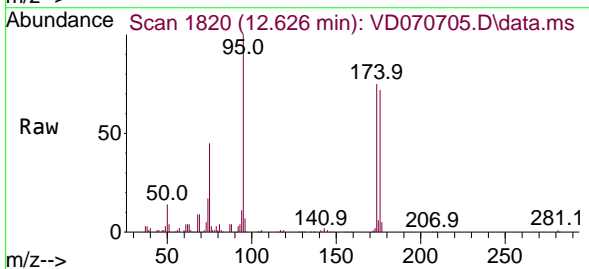
Instrument :
 MSVOA_D
 ClientSampled :

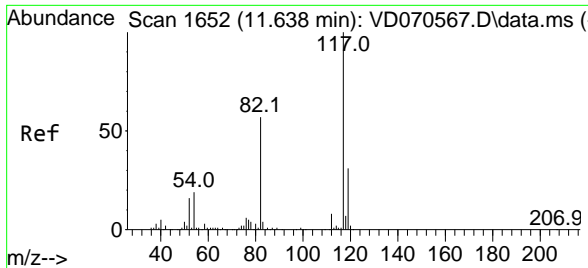
Tgt Ion: 43 Resp: 2553
 Ion Ratio Lower Upper
 43 100
 58 174.3 35.0 52.6#



#62
 4-Bromofluorobenzene
 Concen: 40.711 ug/l
 RT: 12.626 min Scan# 1820
 Delta R.T. -0.000 min
 Lab File: VD070705.D
 Acq: 13 Oct 2021 18:43

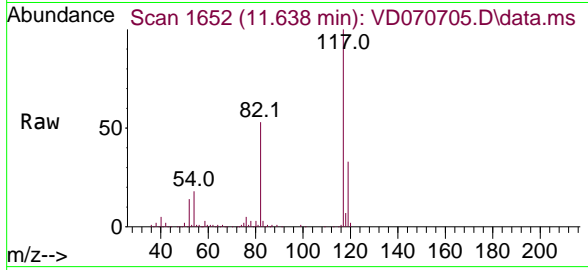
Tgt Ion: 95 Resp: 187131
 Ion Ratio Lower Upper
 95 100
 174 75.3 0.0 138.0
 176 73.2 0.0 135.6





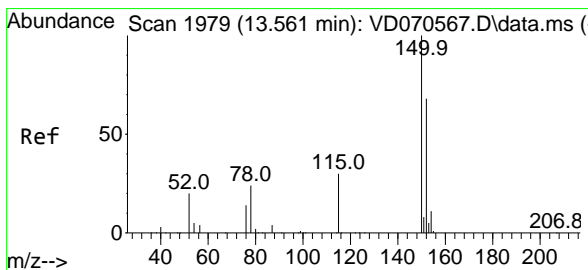
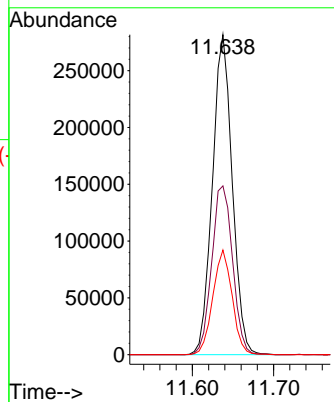
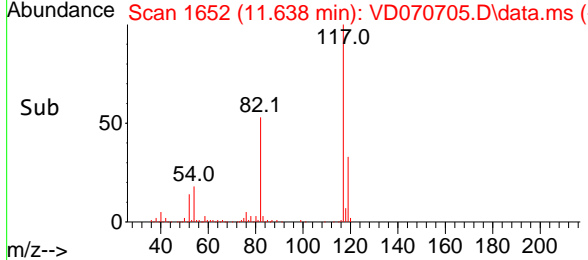
#63
 Chlorobenzene-d5
 Concen: 50.000 ug/l
 RT: 11.638 min Scan# 1652
 Delta R.T. -0.000 min
 Lab File: VD070705.D
 Acq: 13 Oct 2021 18:43

Instrument :
 MSVOA_D
 ClientSampled :

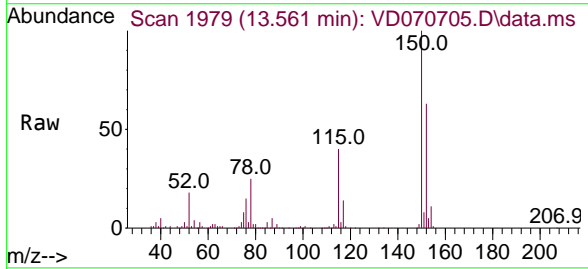


Tgt Ion:117 Resp: 478449

| Ion | Ratio | Lower | Upper |
|-----|-------|-------|-------|
| 117 | 100 | | |
| 82 | 52.7 | 45.4 | 68.2 |
| 119 | 32.7 | 24.7 | 37.1 |

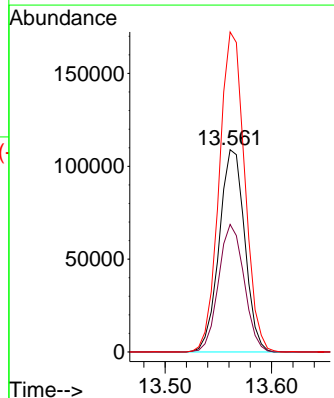
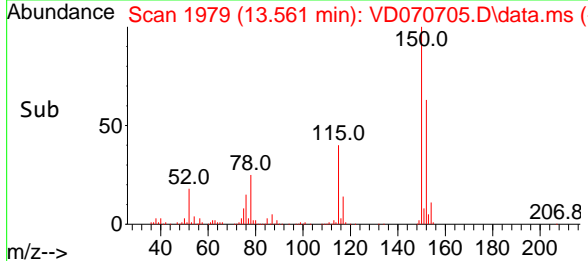


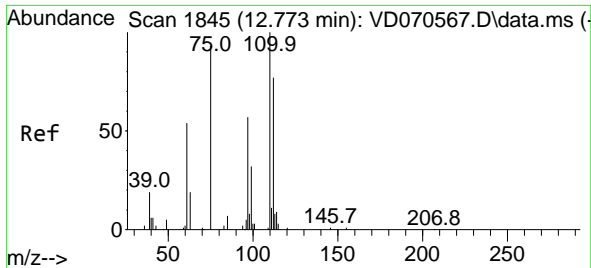
#72
 1,4-Dichlorobenzene-d4
 Concen: 50.000 ug/l
 RT: 13.561 min Scan# 1979
 Delta R.T. -0.000 min
 Lab File: VD070705.D
 Acq: 13 Oct 2021 18:43



Tgt Ion:152 Resp: 181402

| Ion | Ratio | Lower | Upper |
|-----|-------|-------|-------|
| 152 | 100 | | |
| 115 | 63.0 | 31.9 | 95.7 |
| 150 | 157.9 | 0.0 | 350.0 |

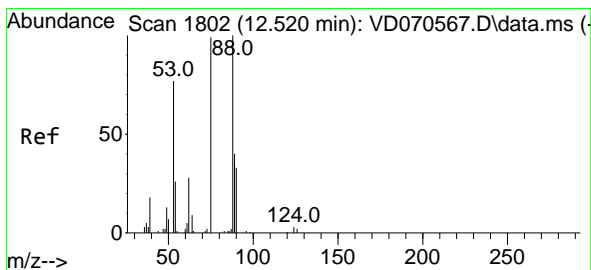
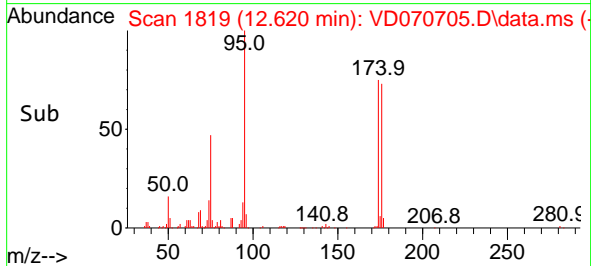
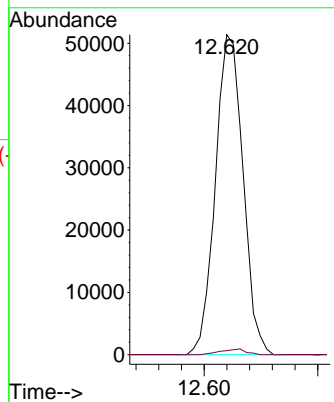
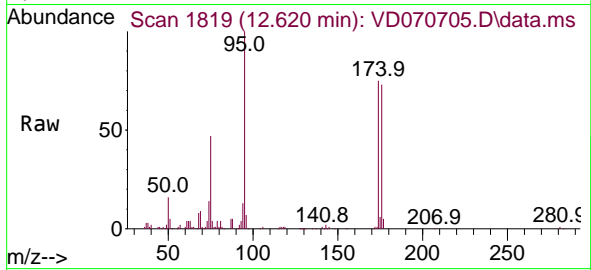




#76
 1,2,3-Trichloropropane
 Concen: 52.880 ug/l
 RT: 12.620 min Scan# 1819
 Delta R.T. -0.153 min
 Lab File: VD070705.D
 Acq: 13 Oct 2021 18:43

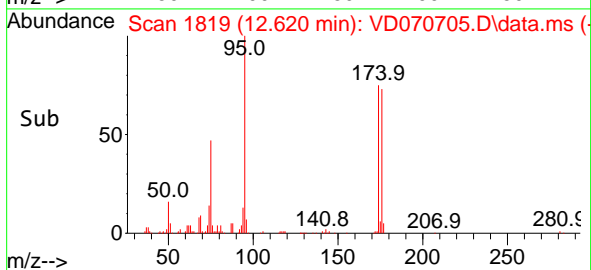
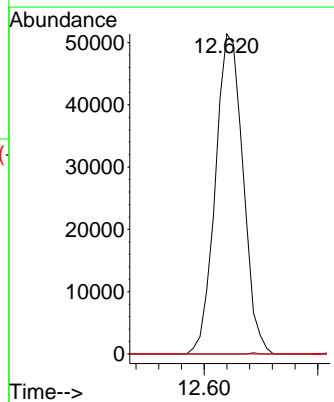
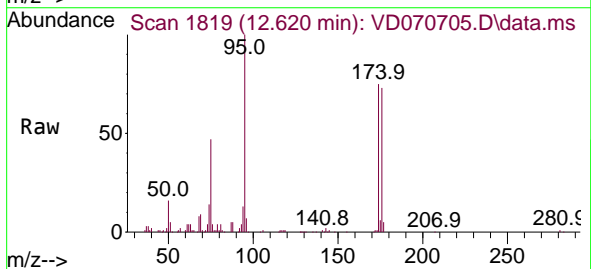
Instrument :
 MSVOA_D
 ClientSampled :

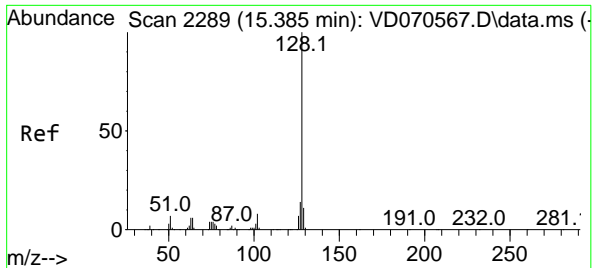
Tgt Ion: 75 Resp: 86823
 Ion Ratio Lower Upper
 75 100
 77 1.6 0.0 0.0#



#81
 trans-1,4-Dichloro-2-butene
 Concen: 117.403 ug/l
 RT: 12.620 min Scan# 1819
 Delta R.T. 0.100 min
 Lab File: VD070705.D
 Acq: 13 Oct 2021 18:43

Tgt Ion: 75 Resp: 86823
 Ion Ratio Lower Upper
 75 100
 53 0.0 64.5 96.7#
 89 0.0 35.3 52.9#





#95
 Naphthalene
 Concen: 2.598 ug/l
 RT: 15.379 min Scan# 2288
 Delta R.T. -0.006 min
 Lab File: VD070705.D
 Acq: 13 Oct 2021 18:43

Instrument :
 MSVOA_D
 ClientSampled :

Tgt Ion:128 Resp: 655

| Ion | Ratio | Lower | Upper |
|-----|-------|-------|-------|
| 128 | 100 | | |
| 127 | 0.0 | 10.9 | 16.3# |
| 129 | 0.0 | 8.6 | 12.8# |

