

Data Path : Z:\voasrv\HPCHEM1\MSVOA_D\Data\VD102423\
 Data File : VD077403.D
 Acq On : 24 Oct 2023 19:04
 Operator : JC/SY
 Sample : 05015-01
 Misc : 5.02G/5.0ml/MSVOA_D/SOIL
 ALS Vial : 20 Sample Multiplier: 1

Instrument :
 MSVOA_D
 ClientSampleId :

Quant Time: Oct 25 04:09:07 2023
 Quant Method : Z:\voasrv\HPCHEM1\MSVOA_D\Method\82D101723S.M
 Quant Title : SW846 8260
 QLast Update : Wed Oct 18 03:02:43 2023
 Response via : Initial Calibration

Compound	R.T.	QIon	Response	Conc	Units	Dev(Min)

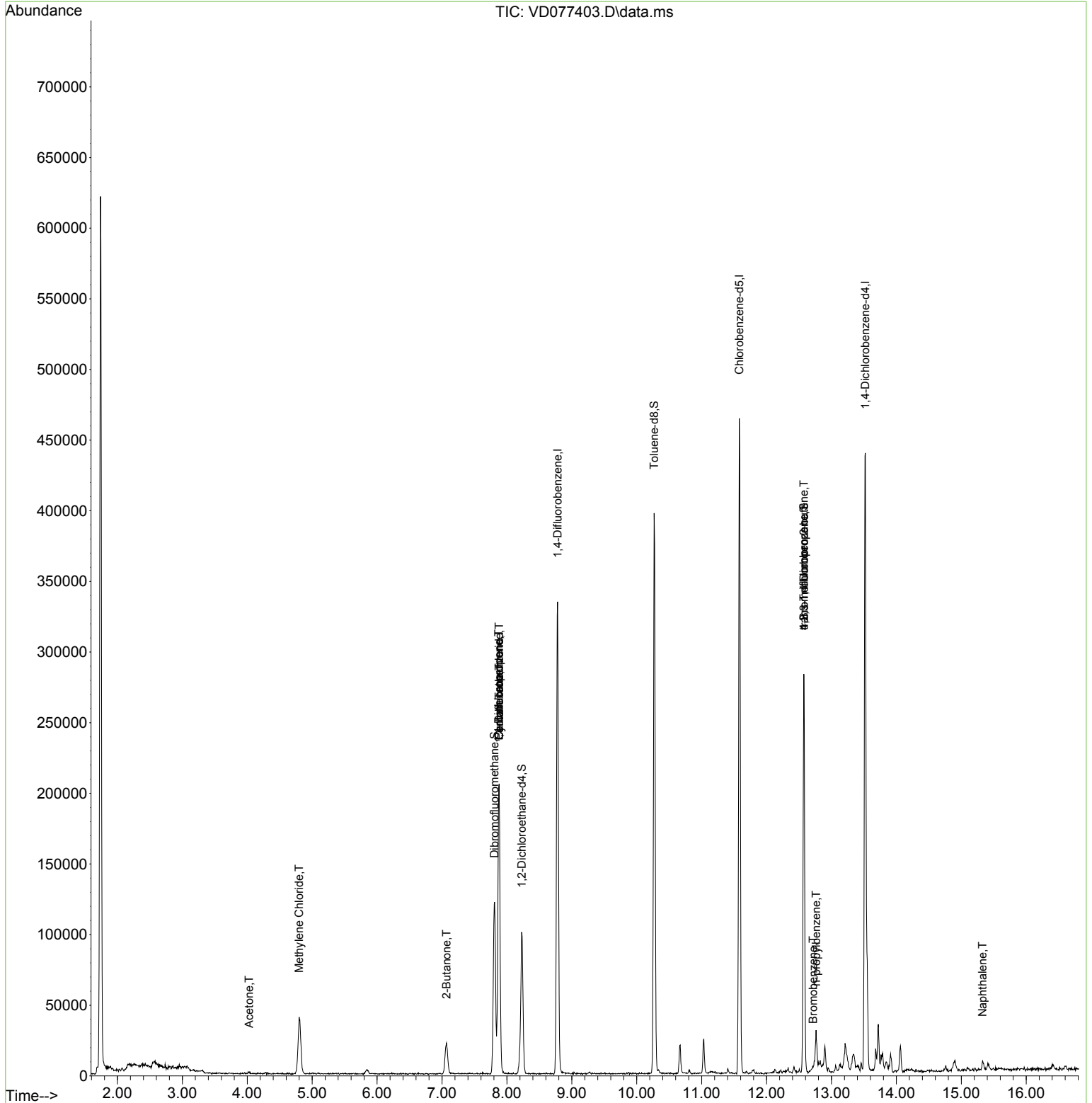
Internal Standards						
1) Pentafluorobenzene	7.881	168	170254	50.000	ug/l	0.00
34) 1,4-Difluorobenzene	8.781	114	324986	50.000	ug/l	0.00
63) Chlorobenzene-d5	11.581	117	297617	50.000	ug/l	0.00
72) 1,4-Dichlorobenzene-d4	13.522	152	127911	50.000	ug/l	0.00
System Monitoring Compounds						
33) 1,2-Dichloroethane-d4	8.228	65	74868	49.247	ug/l	0.00
Spiked Amount	50.000	Range	50 - 163	Recovery	=	98.500%
35) Dibromofluoromethane	7.810	113	93046	40.753	ug/l	0.00
Spiked Amount	50.000	Range	54 - 147	Recovery	=	81.500%
50) Toluene-d8	10.269	98	291596	35.662	ug/l	0.00
Spiked Amount	50.000	Range	58 - 134	Recovery	=	71.320%
62) 4-Bromofluorobenzene	12.575	95	83083	35.298	ug/l	0.00
Spiked Amount	50.000	Range	30 - 143	Recovery	=	70.600%
Target Compounds						
					Qvalue	
16) Acetone	4.028	43	1627	4.880	ug/l #	74
20) Methylene Chloride	4.799	84	34287	13.511	ug/l	94
25) 2-Butanone	7.069	43	879	2.542	ug/l #	37
31) Cyclohexane	7.881	56	3335	1.410	ug/l #	23
36) 1,1-Dichloropropene	7.875	75	11941	3.980	ug/l #	47
38) Carbon Tetrachloride	7.881	117	15581	4.669	ug/l #	17
76) 1,2,3-Trichloropropane	12.575	75	40456	24.760	ug/l #	100
77) Bromobenzene	12.716	156	3297	1.484	ug/l #	7
78) n-propylbenzene	12.763	91	18355	1.801	ug/l	98
81) trans-1,4-Dichloro-2-b...	12.575	75	40456	84.749	ug/l #	17
95) Naphthalene	15.328	128	6220	1.497	ug/l #	91

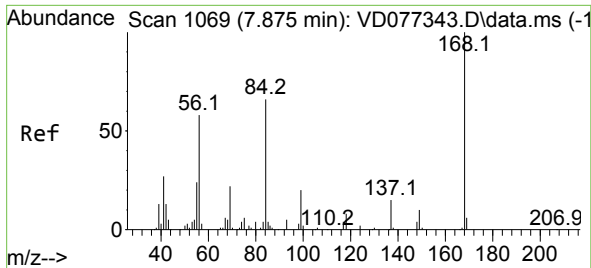
(#) = qualifier out of range (m) = manual integration (+) = signals summed

Data Path : Z:\voasrv\HPCHEM1\MSVOA_D\Data\VD102423\
 Data File : VD077403.D
 Acq On : 24 Oct 2023 19:04
 Operator : JC/SY
 Sample : 05015-01
 Misc : 5.02G/5.0ml/MSVOA_D/SOIL
 ALS Vial : 20 Sample Multiplier: 1

Instrument :
 MSVOA_D
 ClientSampleId :

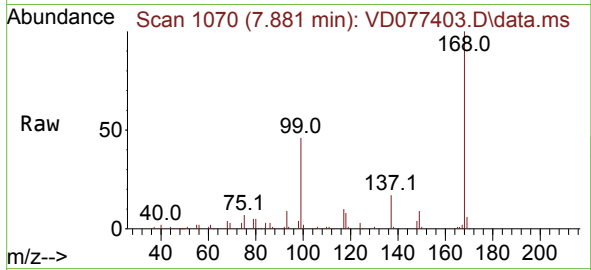
Quant Time: Oct 25 04:09:07 2023
 Quant Method : Z:\voasrv\HPCHEM1\MSVOA_D\Method\82D101723S.M
 Quant Title : SW846 8260
 QLast Update : Wed Oct 18 03:02:43 2023
 Response via : Initial Calibration



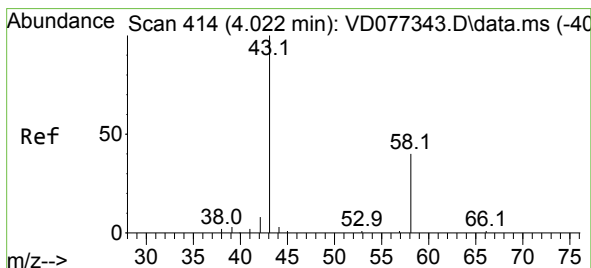
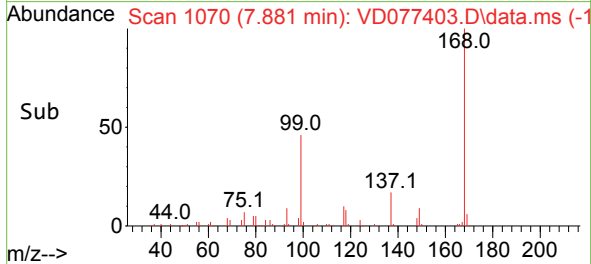
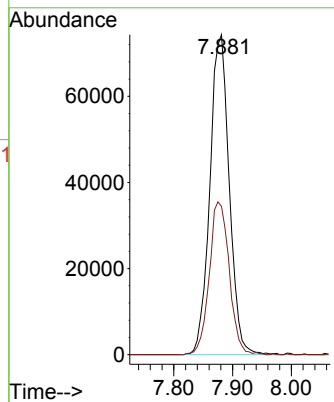


#1
 Pentafluorobenzene
 Concen: 50.000 ug/l
 RT: 7.881 min Scan# 1069
 Delta R.T. 0.006 min
 Lab File: VD077403.D
 Acq: 24 Oct 2023 19:04

Instrument :
 MSVOA_D
 ClientSampleId :

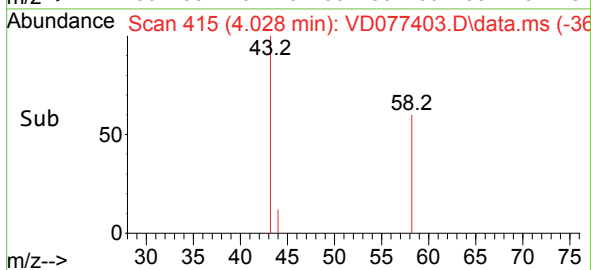
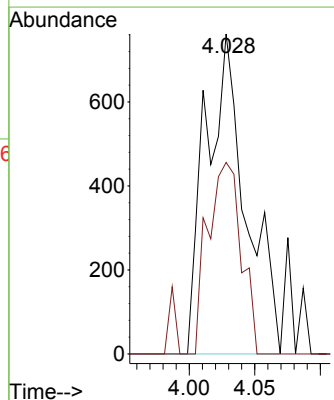
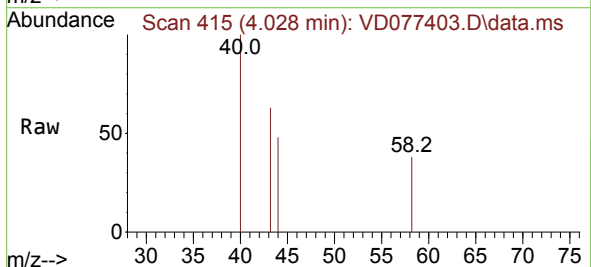


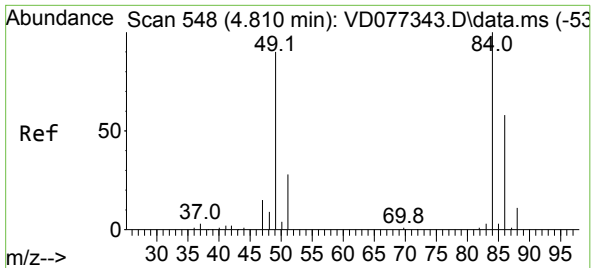
Tgt Ion:168 Resp: 170254
 Ion Ratio Lower Upper
 168 100
 99 46.4 36.7 55.1



#16
 Acetone
 Concen: 4.880 ug/l
 RT: 4.028 min Scan# 415
 Delta R.T. 0.006 min
 Lab File: VD077403.D
 Acq: 24 Oct 2023 19:04

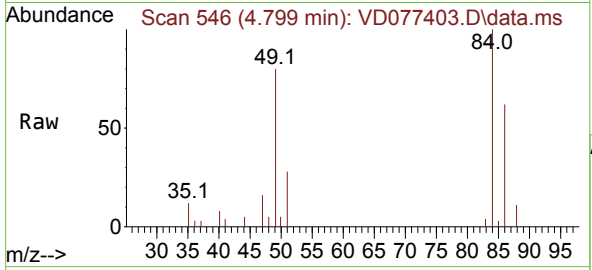
Tgt Ion: 43 Resp: 1627
 Ion Ratio Lower Upper
 43 100
 58 59.8 34.7 52.1#





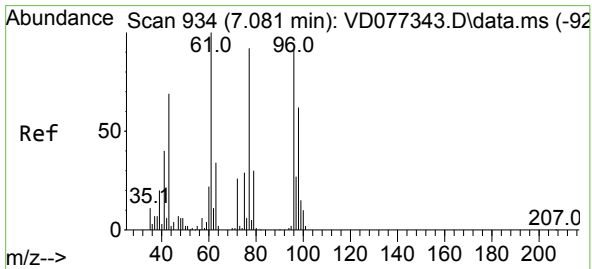
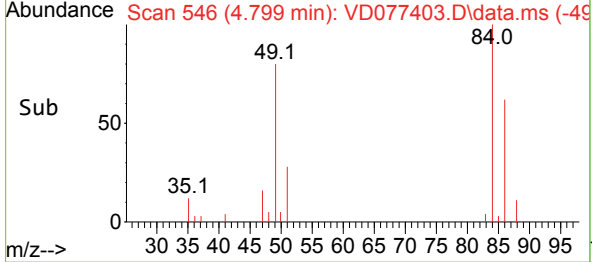
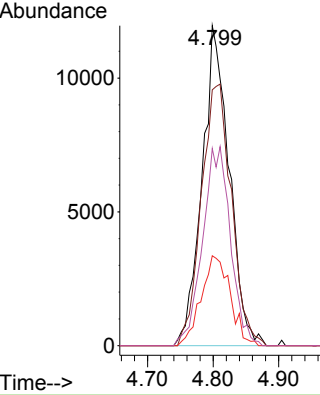
#20
 Methylene Chloride
 Concen: 13.511 ug/l
 RT: 4.799 min Scan# 54
 Delta R.T. -0.011 min
 Lab File: VD077403.D
 Acq: 24 Oct 2023 19:04

Instrument : MSVOA_D
 ClientSampleId :



Tgt Ion: 84 Resp: 34287

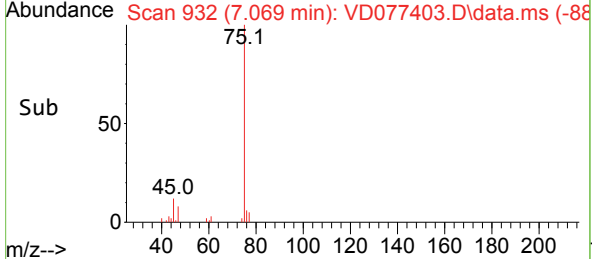
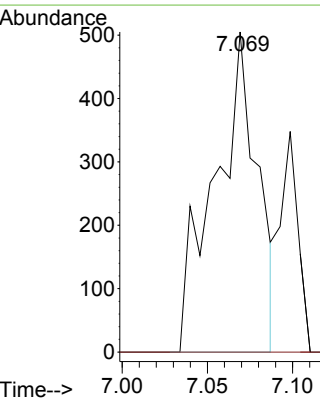
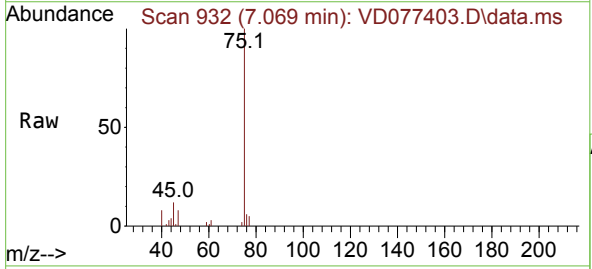
Ion	Ratio	Lower	Upper
84	100		
49	80.0	71.4	107.2
51	28.1	24.5	36.7
86	61.6	48.7	73.1

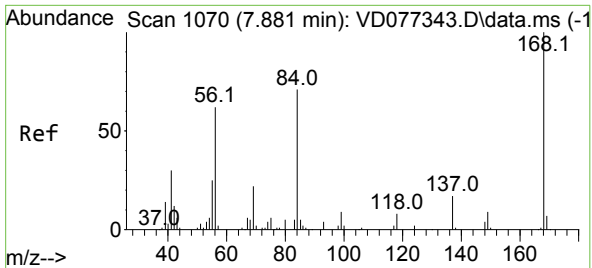


#25
 2-Butanone
 Concen: 2.542 ug/l
 RT: 7.069 min Scan# 932
 Delta R.T. -0.012 min
 Lab File: VD077403.D
 Acq: 24 Oct 2023 19:04

Tgt Ion: 43 Resp: 879

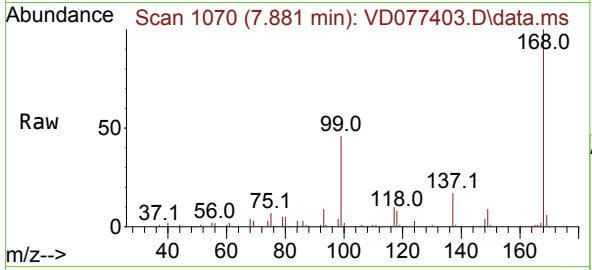
Ion	Ratio	Lower	Upper
43	100		
72	0.0	30.7	46.1#



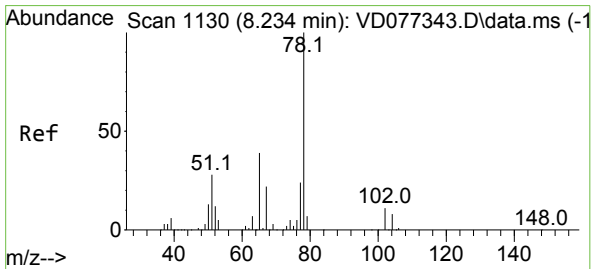
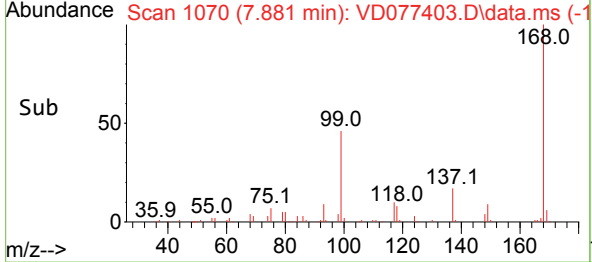
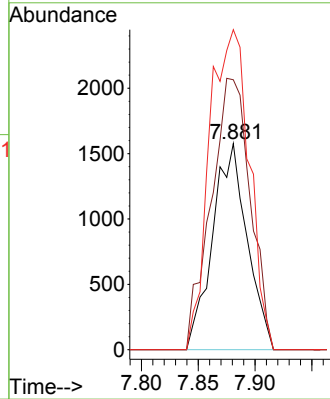


#31
 Cyclohexane
 Concen: 1.410 ug/l
 RT: 7.881 min Scan# 1109
 Delta R.T. -0.000 min
 Lab File: VD077403.D
 Acq: 24 Oct 2023 19:04

Instrument : MSVOA_D
 ClientSampleId :

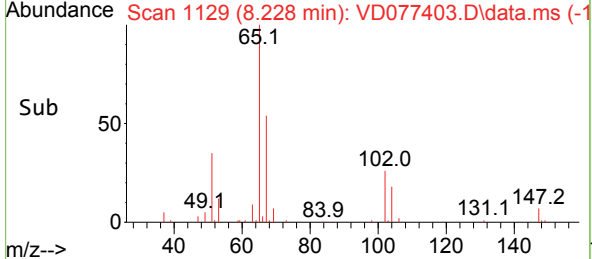
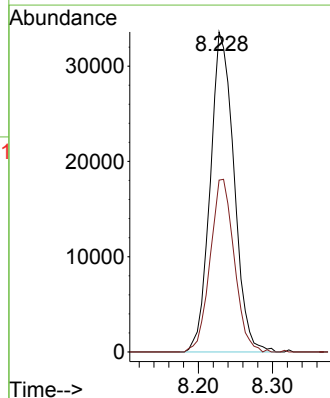
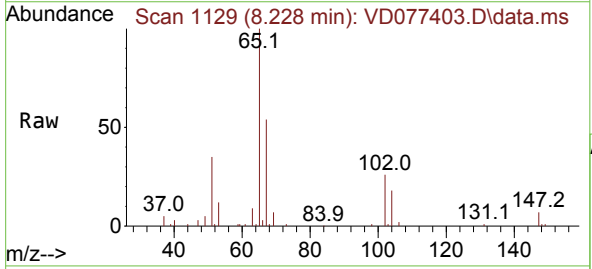


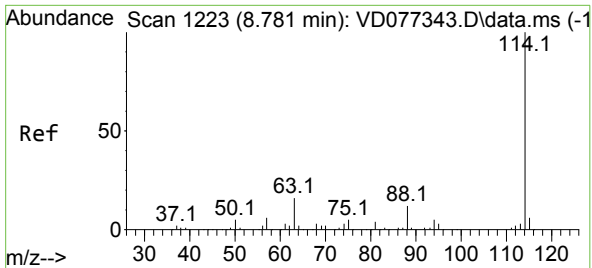
Tgt Ion: 56 Resp: 3335
 Ion Ratio Lower Upper
 56 100
 69 130.9 28.6 43.0#
 84 155.2 84.8 127.2#



#33
 1,2-Dichloroethane-d4
 Concen: 49.247 ug/l
 RT: 8.228 min Scan# 1129
 Delta R.T. -0.006 min
 Lab File: VD077403.D
 Acq: 24 Oct 2023 19:04

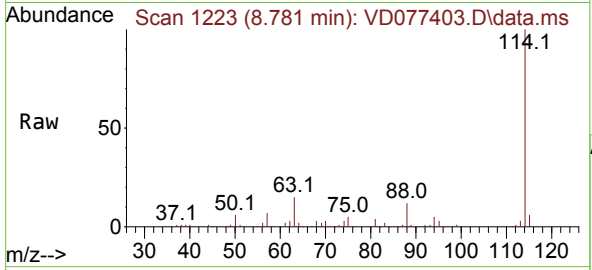
Tgt Ion: 65 Resp: 74868
 Ion Ratio Lower Upper
 65 100
 67 54.6 0.0 115.0





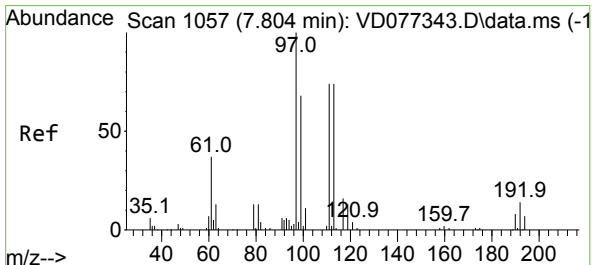
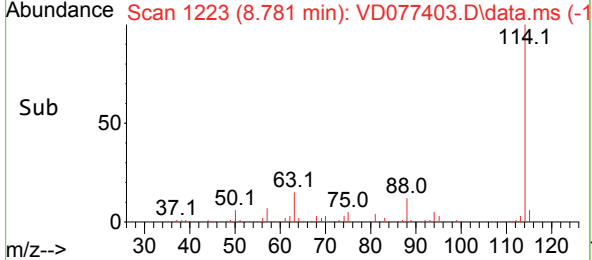
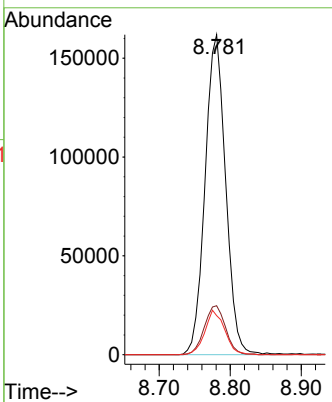
#34
 1,4-Difluorobenzene
 Concen: 50.000 ug/l
 RT: 8.781 min Scan# 11
 Delta R.T. -0.000 min
 Lab File: VD077403.D
 Acq: 24 Oct 2023 19:04

Instrument :
 MSVOA_D
 ClientSampleId :



Tgt Ion:114 Resp: 324986

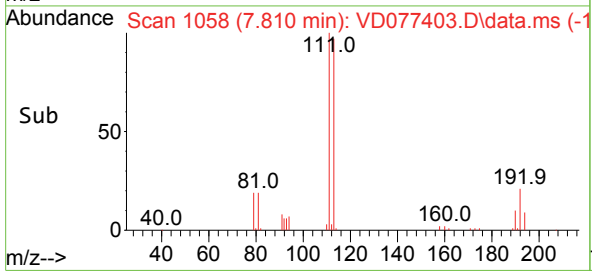
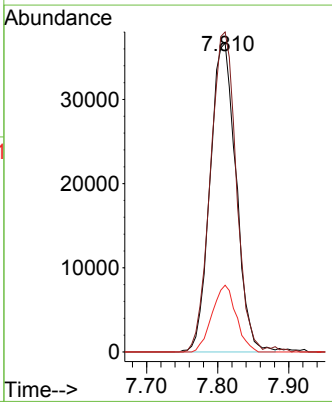
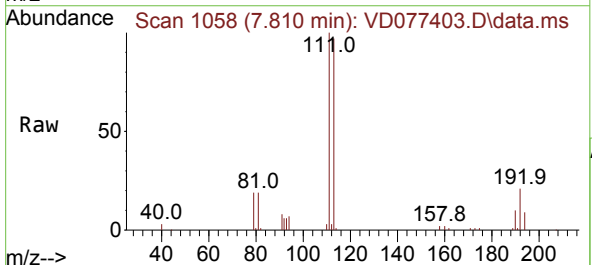
Ion	Ratio	Lower	Upper
114	100		
63	15.3	0.0	33.4
88	12.2	0.0	26.2

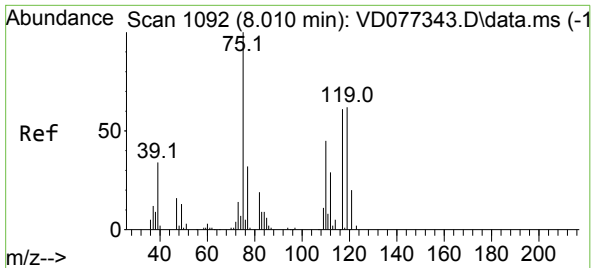


#35
 Dibromofluoromethane
 Concen: 40.753 ug/l
 RT: 7.810 min Scan# 1058
 Delta R.T. 0.006 min
 Lab File: VD077403.D
 Acq: 24 Oct 2023 19:04

Tgt Ion:113 Resp: 93046

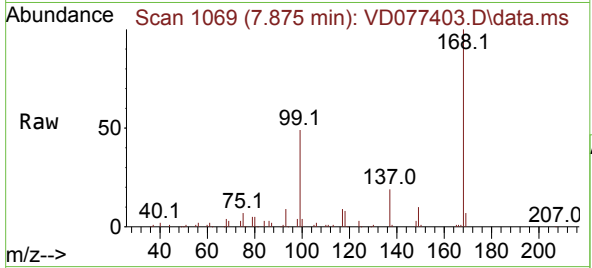
Ion	Ratio	Lower	Upper
113	100		
111	103.1	84.7	127.1
192	20.1	16.8	25.2





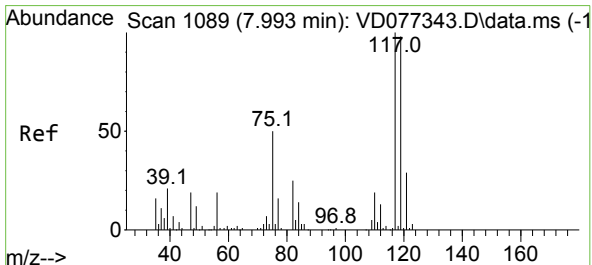
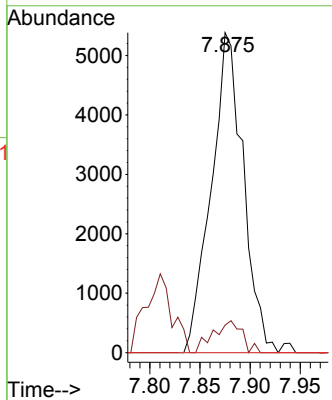
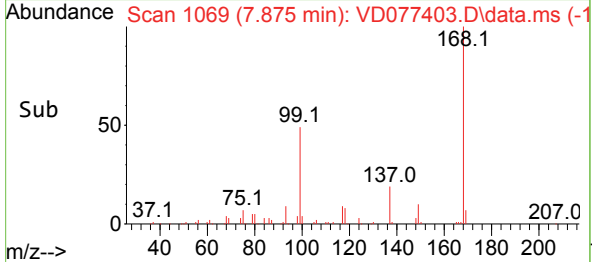
#36
 1,1-Dichloropropene
 Concen: 3.980 ug/l
 RT: 7.875 min Scan# 1070
 Delta R.T. -0.135 min
 Lab File: VD077403.D
 Acq: 24 Oct 2023 19:04

Instrument : MSVOA_D
 ClientSampleId :



Tgt Ion: 75 Resp: 11941

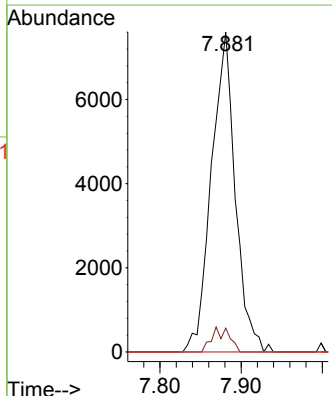
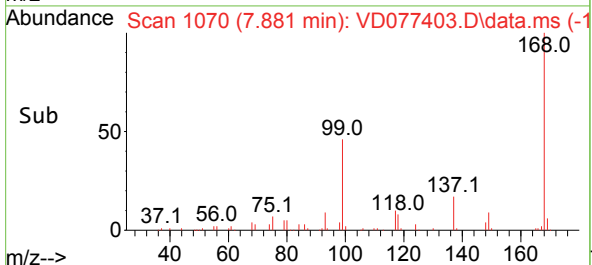
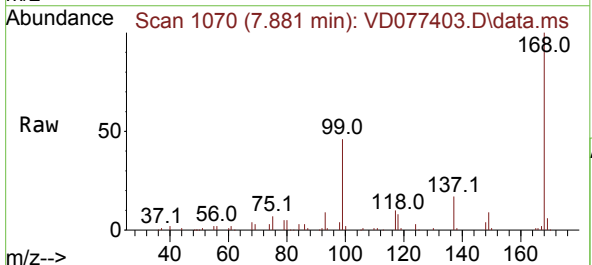
Ion	Ratio	Lower	Upper
75	100		
110	9.0	19.9	59.6#
77	0.0	24.7	37.1#

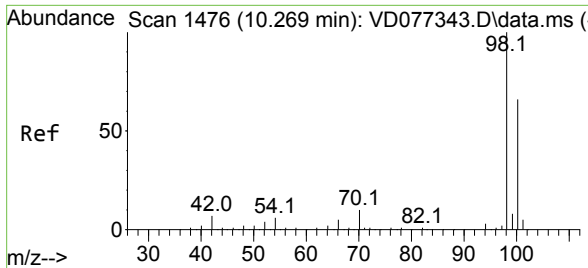


#38
 Carbon Tetrachloride
 Concen: 4.669 ug/l
 RT: 7.881 min Scan# 1070
 Delta R.T. -0.112 min
 Lab File: VD077403.D
 Acq: 24 Oct 2023 19:04

Tgt Ion: 117 Resp: 15581

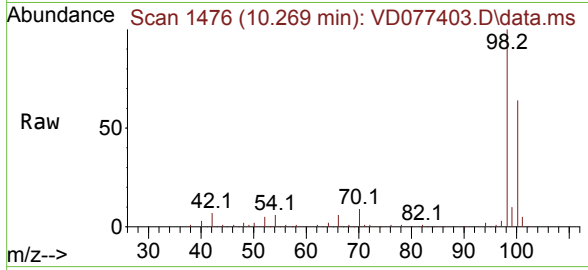
Ion	Ratio	Lower	Upper
117	100		
119	7.4	78.0	117.0#
121	0.0	24.2	36.2#



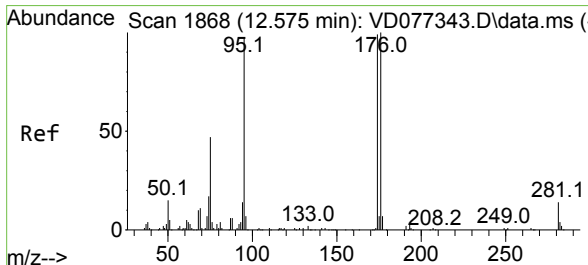
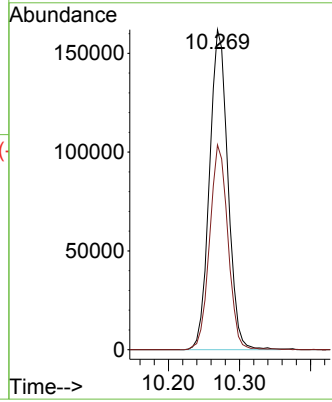
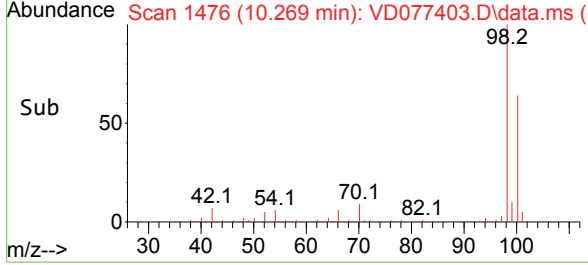


#50
 Toluene-d8
 Concen: 35.662 ug/l
 RT: 10.269 min Scan# 1476
 Delta R.T. 0.000 min
 Lab File: VD077403.D
 Acq: 24 Oct 2023 19:04

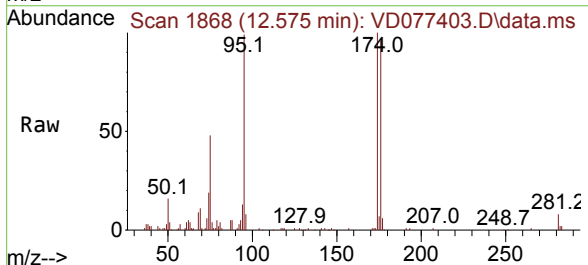
Instrument : MSVOA_D
 ClientSampleId :



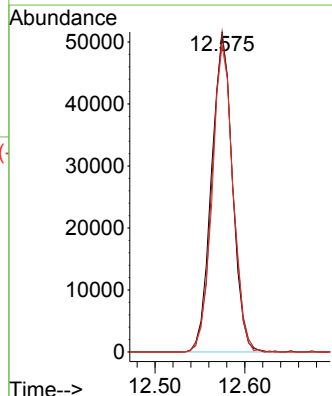
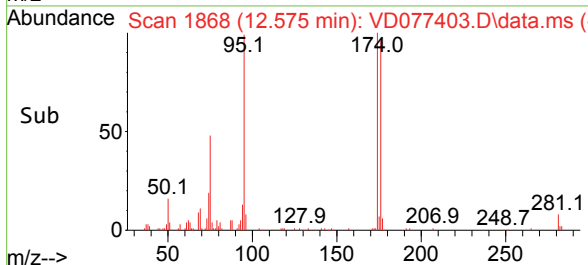
Tgt Ion: 98 Resp: 291596
 Ion Ratio Lower Upper
 98 100
 100 63.6 50.3 75.5

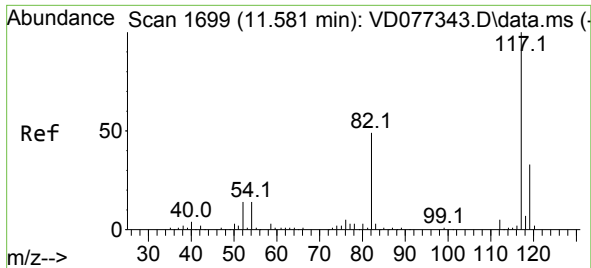


#62
 4-Bromofluorobenzene
 Concen: 35.298 ug/l
 RT: 12.575 min Scan# 1868
 Delta R.T. -0.000 min
 Lab File: VD077403.D
 Acq: 24 Oct 2023 19:04



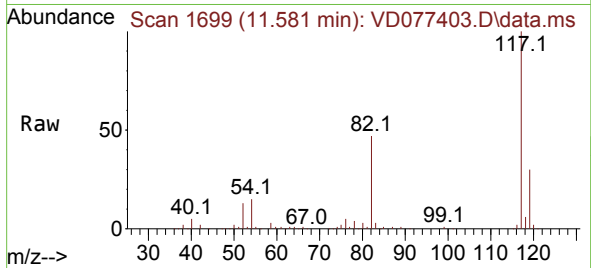
Tgt Ion: 95 Resp: 83083
 Ion Ratio Lower Upper
 95 100
 174 98.4 0.0 201.8
 176 95.6 0.0 191.8



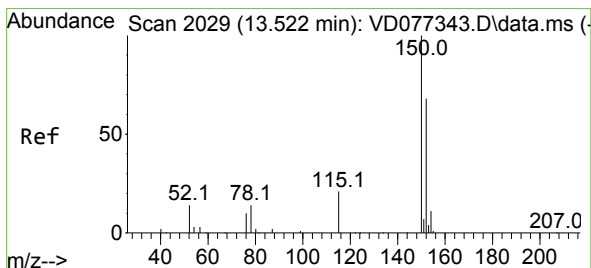
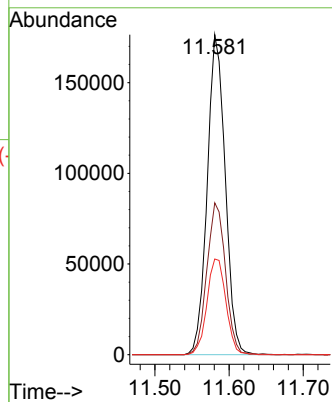
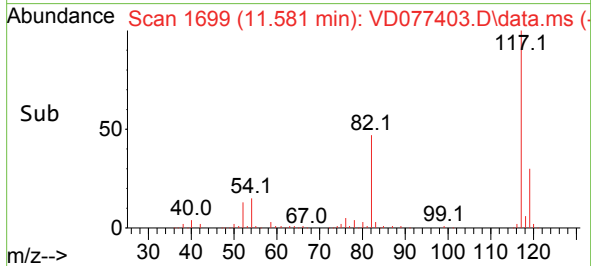


#63
 Chlorobenzene-d5
 Concen: 50.000 ug/l
 RT: 11.581 min Scan# 11
 Delta R.T. -0.000 min
 Lab File: VD077403.D
 Acq: 24 Oct 2023 19:04

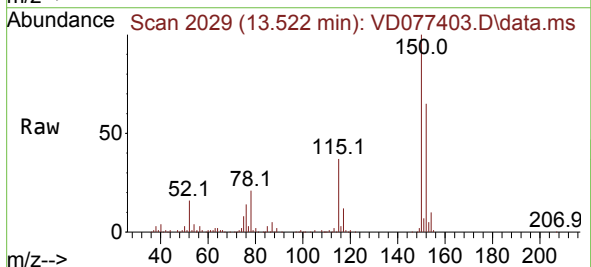
Instrument :
 MSVOA_D
 ClientSampleId :



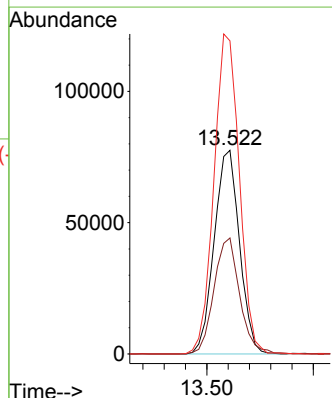
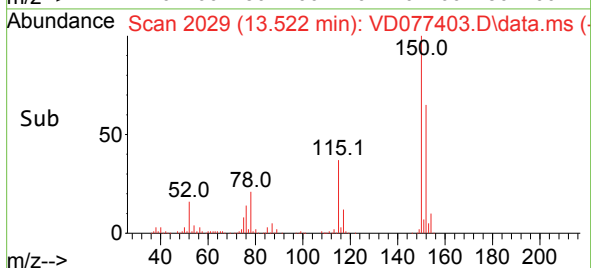
Tgt Ion:117 Resp: 297617
 Ion Ratio Lower Upper
 117 100
 82 47.5 38.3 57.5
 119 29.9 25.0 37.4

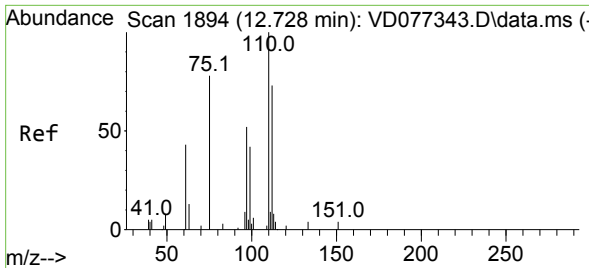


#72
 1,4-Dichlorobenzene-d4
 Concen: 50.000 ug/l
 RT: 13.522 min Scan# 2029
 Delta R.T. -0.000 min
 Lab File: VD077403.D
 Acq: 24 Oct 2023 19:04



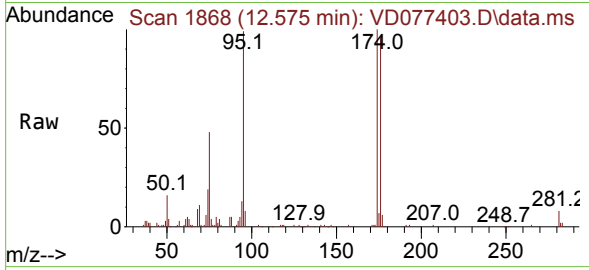
Tgt Ion:152 Resp: 127911
 Ion Ratio Lower Upper
 152 100
 115 57.8 27.1 81.3
 150 157.5 0.0 353.6



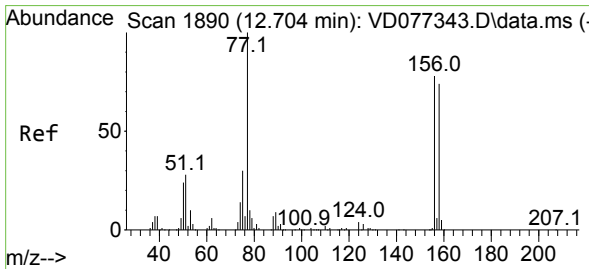
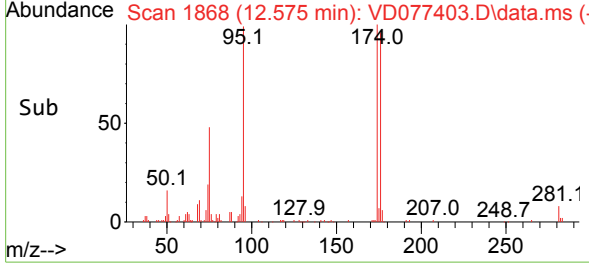
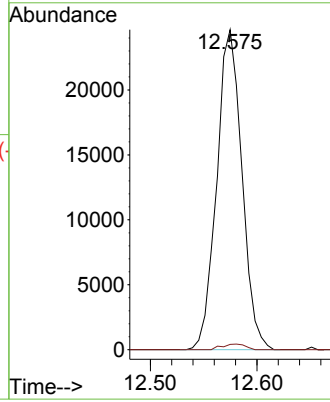


#76
 1,2,3-Trichloropropane
 Concen: 24.760 ug/l
 RT: 12.575 min Scan# 1868
 Delta R.T. -0.153 min
 Lab File: VD077403.D
 Acq: 24 Oct 2023 19:04

Instrument : MSVOA_D
 ClientSampleId :

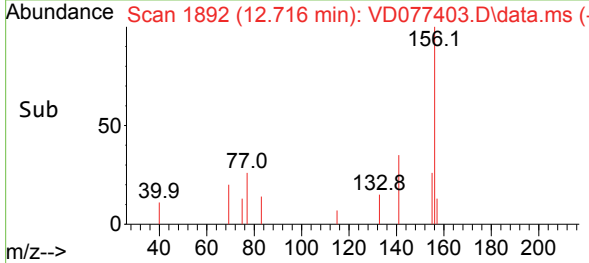
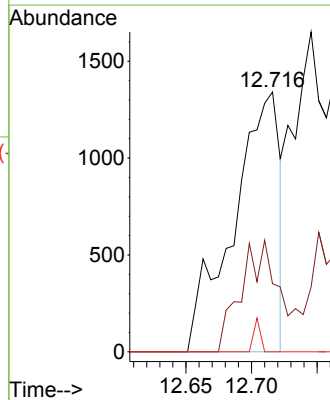
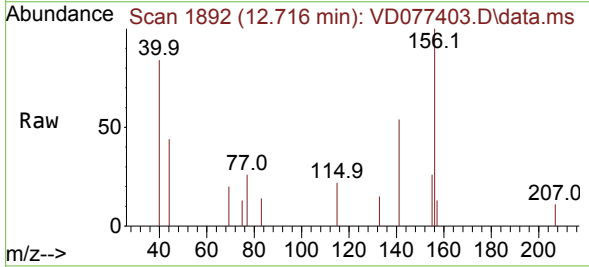


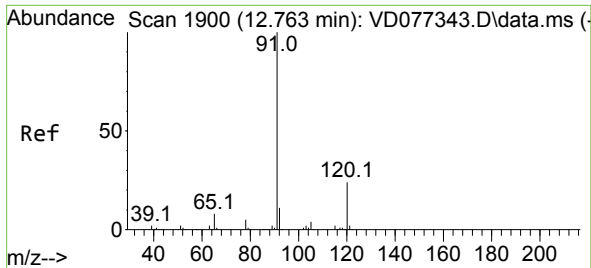
Tgt Ion: 75 Resp: 40456
 Ion Ratio Lower Upper
 75 100
 77 1.6 0.0 0.0#



#77
 Bromobenzene
 Concen: 1.484 ug/l
 RT: 12.716 min Scan# 1892
 Delta R.T. 0.012 min
 Lab File: VD077403.D
 Acq: 24 Oct 2023 19:04

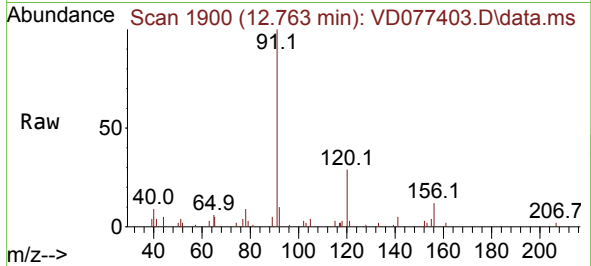
Tgt Ion: 156 Resp: 3297
 Ion Ratio Lower Upper
 156 100
 77 37.6 76.8 230.4#
 158 1.9 48.6 145.9#



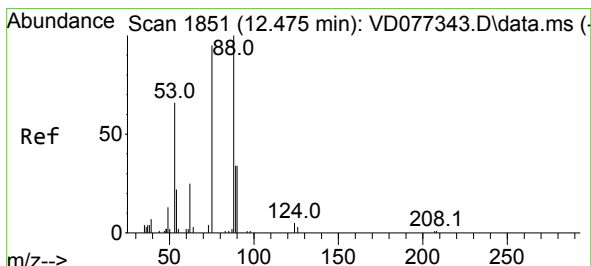
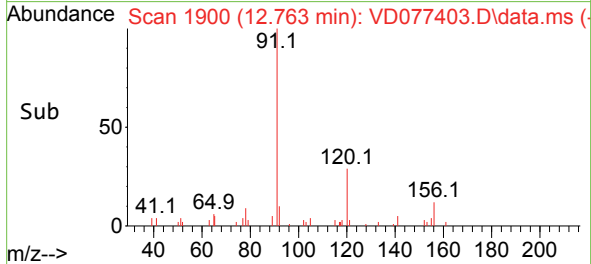
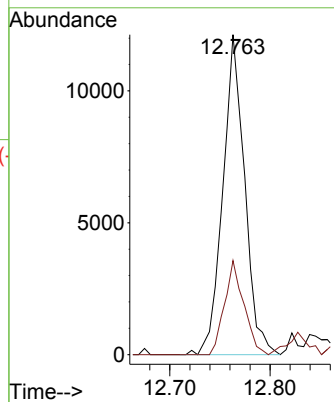


#78
 n-propylbenzene
 Concen: 1.801 ug/l
 RT: 12.763 min Scan# 1900
 Delta R.T. -0.000 min
 Lab File: VD077403.D
 Acq: 24 Oct 2023 19:04

Instrument : MSVOA_D
 ClientSampleId :

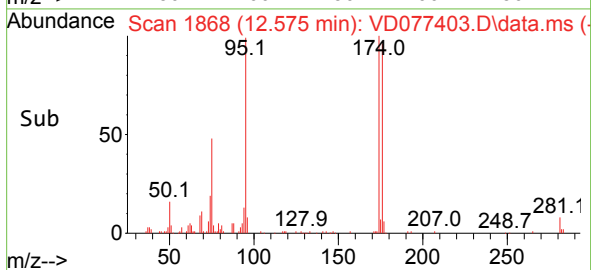
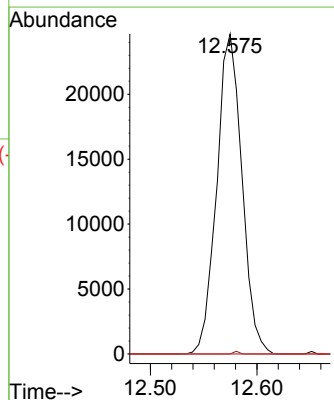
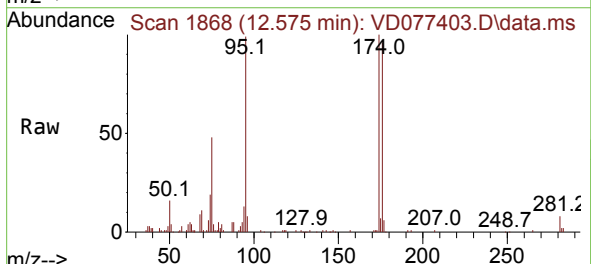


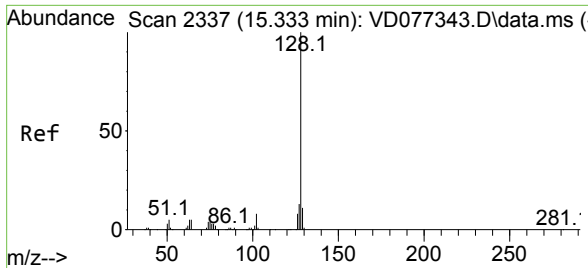
Tgt Ion: 91 Resp: 18355
 Ion Ratio Lower Upper
 91 100
 120 26.0 12.4 37.2



#81
 trans-1,4-Dichloro-2-butene
 Concen: 84.749 ug/l
 RT: 12.575 min Scan# 1868
 Delta R.T. 0.100 min
 Lab File: VD077403.D
 Acq: 24 Oct 2023 19:04

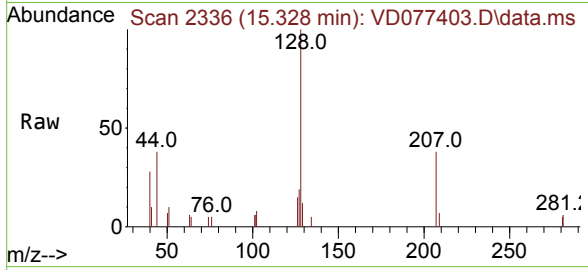
Tgt Ion: 75 Resp: 40456
 Ion Ratio Lower Upper
 75 100
 53 0.2 63.0 94.4#
 89 0.0 37.9 56.9#





#95
 Naphthalene
 Concen: 1.497 ug/l
 RT: 15.328 min Scan# 21
 Delta R.T. -0.006 min
 Lab File: VD077403.D
 Acq: 24 Oct 2023 19:04

Instrument :
 MSVOA_D
 ClientSampleId :



Tgt Ion:128 Resp: 6220

Ion	Ratio	Lower	Upper
128	100		
127	19.3	10.5	15.7#
129	11.8	8.7	13.1

