

Data Path : Z:\voasrv\HPCHEM1\MSVOA\_D\Data\VD102423\  
 Data File : VD077397.D  
 Acq On : 24 Oct 2023 16:21  
 Operator : JC/SY  
 Sample : 05011-03  
 Misc : 5.05G/5.0ml/MSVOA\_D/SOIL  
 ALS Vial : 14 Sample Multiplier: 1

Instrument :  
 MSVOA\_D  
 ClientSampleId :  
 RBR-200010

Integration Parameters: RTEINT.P

Integrator: RTE  
 Smoothing : ON  
 Sampling : 1  
 Start Thrs : 0.2  
 Stop Thrs : 0

Filtering: 5  
 Min Area: 3 % of largest Peak  
 Max Peaks: 100  
 Peak Location: TOP

If leading or trailing edge < 100 prefer < Baseline drop else tangent >  
 Peak separation: 5

Method : Z:\voasrv\HPCHEM1\MSVOA\_D\Method\82D101723S.M  
 Title : SW846 8260

Signal : TIC: VD077397.D\data.ms

peak #	R.T. min	first scan	max scan	last scan	PK TY	peak height	corr. area	corr. % max.	% of total
1	1.740	19	26	38	rBV	1086565	1830948	100.00%	32.654%
2	4.805	535	547	558	rVB3	14733	48841	2.67%	0.871%
3	7.069	923	932	943	rBV	18698	54977	3.00%	0.980%
4	7.810	1047	1058	1063	rBV	97439	236872	12.94%	4.224%
5	7.875	1063	1069	1082	rVB2	147776	335432	18.32%	5.982%
6	8.234	1117	1130	1141	rBV2	82918	209328	11.43%	3.733%
7	8.781	1214	1223	1233	rBV	239420	500063	27.31%	8.918%
8	10.269	1467	1476	1487	rBV	234461	417263	22.79%	7.442%
9	10.663	1538	1543	1550	rBV2	13689	23434	1.28%	0.418%
10	11.581	1692	1699	1710	rVB	251353	438511	23.95%	7.821%
11	12.575	1862	1868	1877	rBV2	119819	193632	10.58%	3.453%
12	12.898	1917	1923	1929	rBV6	9313	19104	1.04%	0.341%
13	13.410	2003	2010	2014	rBV8	9130	23582	1.29%	0.421%
14	13.516	2022	2028	2038	rVB	145149	244213	13.34%	4.355%
15	13.839	2077	2083	2087	rBV6	35216	64513	3.52%	1.151%
16	14.051	2117	2119	2124	rVB5	18803	25047	1.37%	0.447%
17	14.098	2125	2127	2134	rVB7	14403	19996	1.09%	0.357%
18	14.169	2134	2139	2142	rBV5	23284	39913	2.18%	0.712%
19	14.228	2144	2149	2156	rBV10	22865	49172	2.69%	0.877%
20	14.286	2156	2159	2164	rBV6	12244	21395	1.17%	0.382%
21	14.351	2164	2170	2179	rBV7	48525	149393	8.16%	2.664%
22	14.510	2188	2197	2202	rBV6	50589	118711	6.48%	2.117%
23	14.557	2203	2205	2211	rVB6	20397	37530	2.05%	0.669%
24	14.775	2237	2242	2246	rBV7	38702	82567	4.51%	1.473%
25	14.822	2246	2250	2256	rVB5	67372	121918	6.66%	2.174%
26	15.039	2283	2287	2291	rVB4	44468	69720	3.81%	1.243%
27	15.098	2293	2297	2299	rBV4	33116	52761	2.88%	0.941%
28	15.304	2329	2332	2338	rVB3	49167	77243	4.22%	1.378%
29	15.375	2340	2344	2348	rBV6	52989	101050	5.52%	1.802%

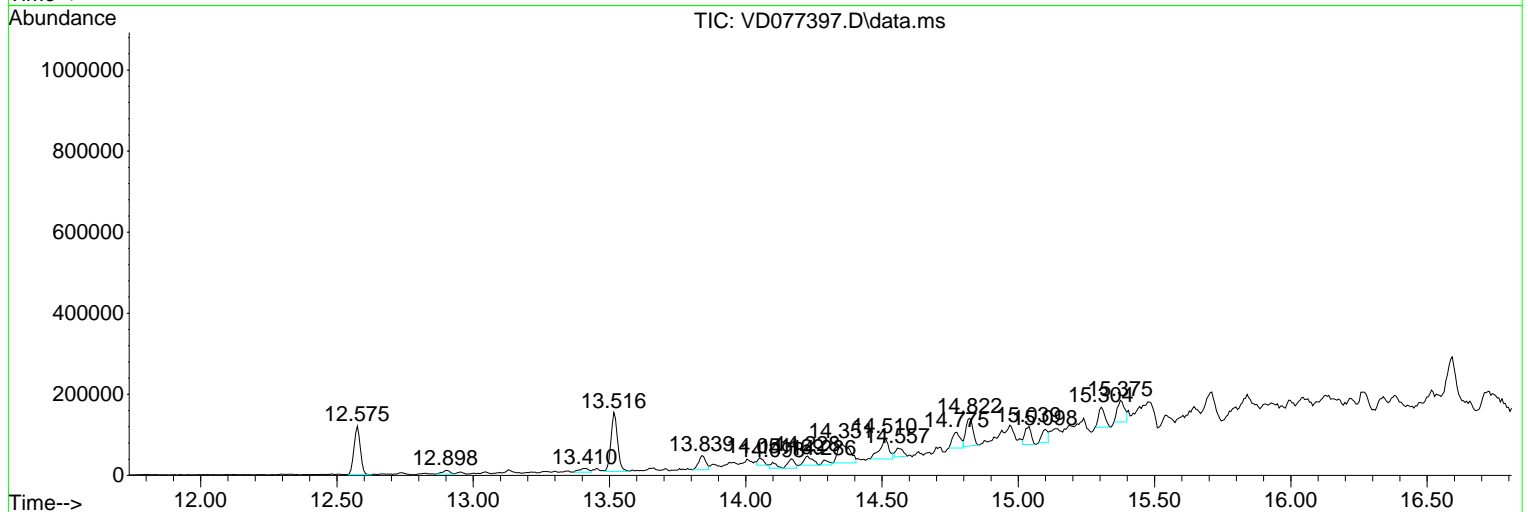
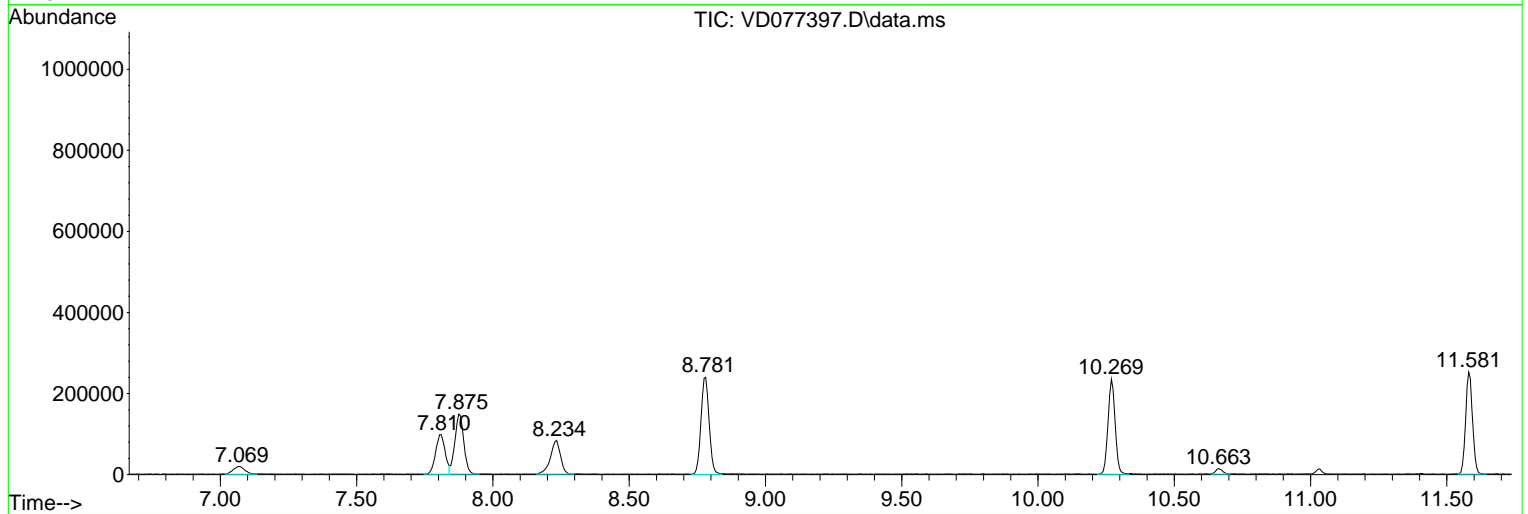
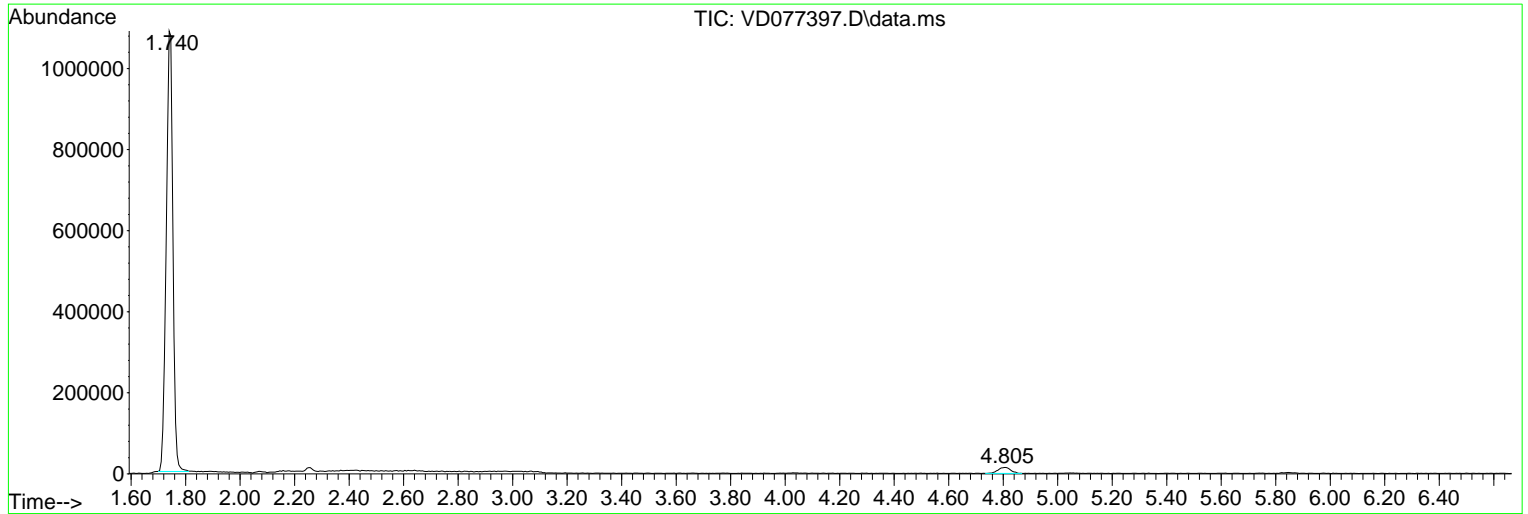
Sum of corrected areas: 5607129

Data Path : Z:\voasrv\HPCHEM1\MSVOA\_D\Data\VD102423\  
 Data File : VD077397.D  
 Acq On : 24 Oct 2023 16:21  
 Operator : JC/SY  
 Sample : 05011-03  
 Misc : 5.05G/5.0ml/MSVOA\_D/SOIL  
 ALS Vial : 14 Sample Multiplier: 1

**Instrument :**  
 MSVOA\_D  
**ClientSampleId :**  
 RBR-200010

Quant Method : Z:\voasrv\HPCHEM1\MSVOA\_D\Method\82D101723S.M  
 Quant Title : SW846 8260

TIC Library : C:\Database\NIST20.L  
 TIC Integration Parameters: LSCINT.P



Data Path : Z:\voasrv\HPCHEM1\MSVOA\_D\Data\VD102423\  
 Data File : VD077397.D  
 Acq On : 24 Oct 2023 16:21  
 Operator : JC/SY  
 Sample : 05011-03  
 Misc : 5.05G/5.0ml/MSVOA\_D/SOIL  
 ALS Vial : 14 Sample Multiplier: 1

Instrument :  
 MSVOA\_D  
 ClientSampleId :  
 RBR-200010

Quant Method : Z:\voasrv\HPCHEM1\MSVOA\_D\Method\82D101723S.M  
 Quant Title : SW846 8260

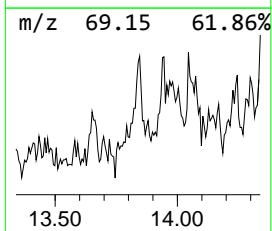
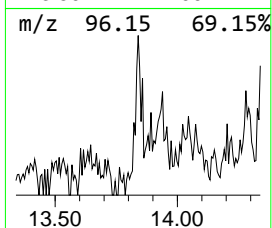
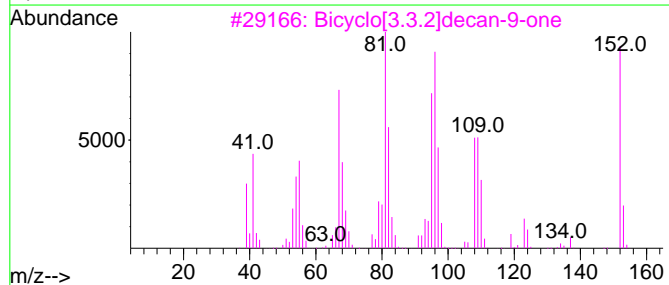
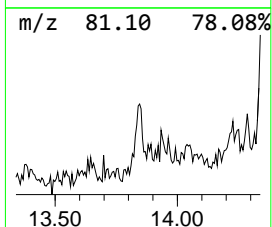
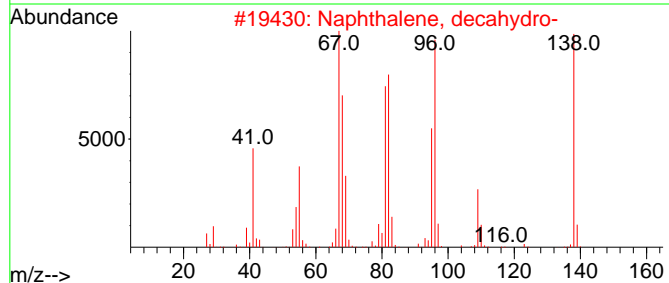
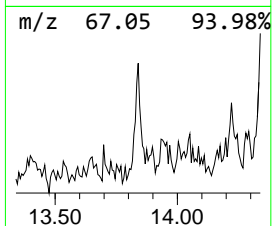
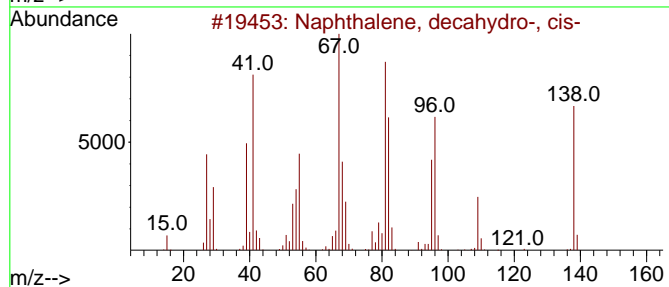
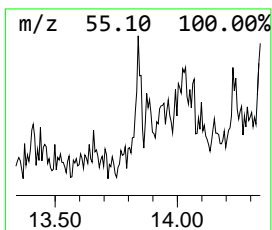
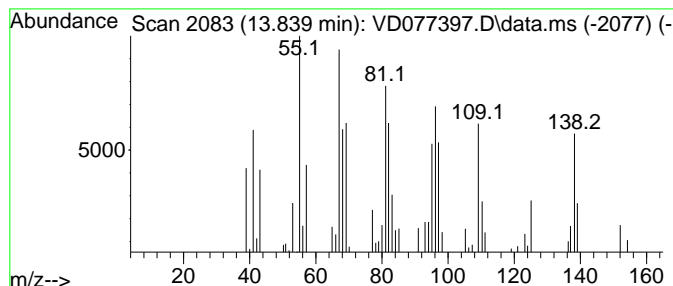
TIC Library : C:\Database\NIST20.L  
 TIC Integration Parameters: LSCINT.P

\*\*\*\*\*  
 Peak Number 2 Naphthalene, decahydro-, cis- Concentration Rank 9

R.T.	EstConc	Area	Relative to ISTD	R.T.
13.839	13.21 ug/l	64513	1,4-Dichlorobenzene-d4	13.516

Hit#	of	5	Tentative ID	MW	MolForm	CAS#	Qual
1			Naphthalene, decahydro-, cis-	138	C10H18	000493-01-6	86
2			Naphthalene, decahydro-	138	C10H18	000091-17-8	70
3			Bicyclo[3.3.2]decan-9-one	152	C10H16O	028054-91-3	60
4			Cyclohexane, 1,3-dimethyl-2-meth...	124	C9H16	020348-74-7	60
5			Bicyclo[2.2.1]heptane, 2-methyl-...	110	C8H14	000872-78-6	55



Data Path : Z:\voasrv\HPCHEM1\MSVOA\_D\Data\VD102423\  
 Data File : VD077397.D  
 Acq On : 24 Oct 2023 16:21  
 Operator : JC/SY  
 Sample : 05011-03  
 Misc : 5.05G/5.0ml/MSVOA\_D/SOIL  
 ALS Vial : 14 Sample Multiplier: 1

Instrument :  
 MSVOA\_D  
 ClientSampleId :  
 RBR-200010

Quant Method : Z:\voasrv\HPCHEM1\MSVOA\_D\Method\82D101723S.M  
 Quant Title : SW846 8260

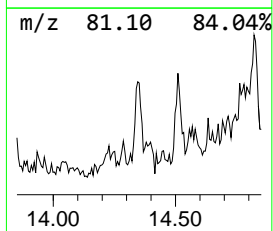
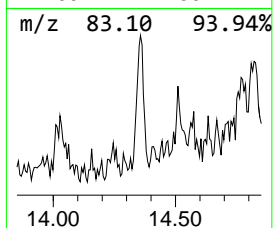
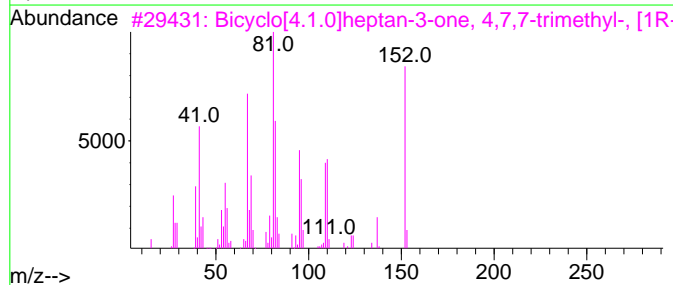
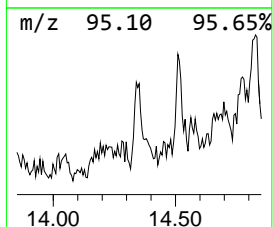
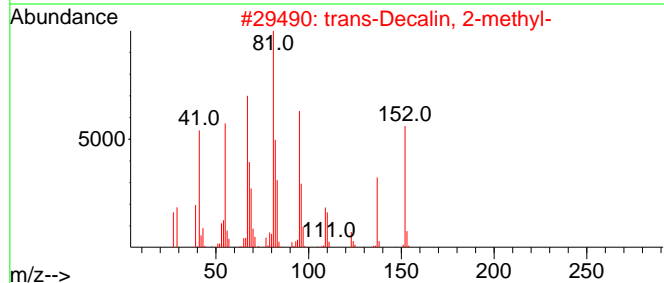
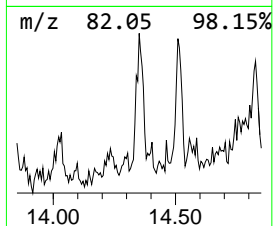
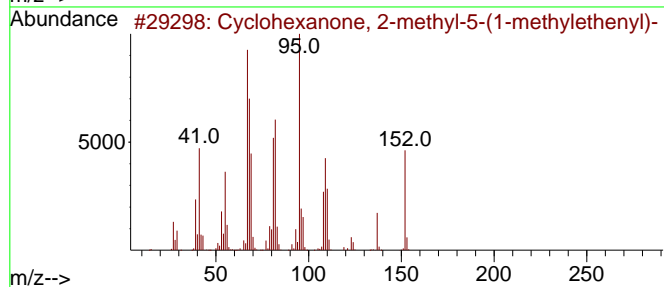
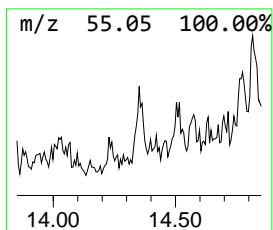
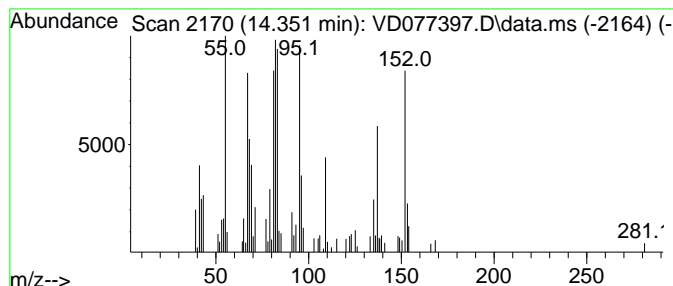
TIC Library : C:\Database\NIST20.L  
 TIC Integration Parameters: LSCINT.P

\*\*\*\*\*  
 Peak Number 3 Cyclohexanone, 2-methyl-5-(... Concentration Rank 2

R.T.	EstConc	Area	Relative to ISTD	R.T.
14.351	30.59 ug/l	149393	1,4-Dichlorobenzene-d4	13.516

Hit#	of	5	Tentative ID	MW	MolForm	CAS#	Qual
1			Cyclohexanone, 2-methyl-5-(1-met...	152	C10H16O	007764-50-3	55
2			trans-Decalin, 2-methyl-	152	C11H20	1000152-47-3	53
3			Bicyclo[4.1.0]heptan-3-one, 4,7,...	152	C10H16O	004176-04-9	53
4			cis-Decalin, 2-syn-methyl-	152	C11H20	1000155-85-6	53
5			Naphthalene, decahydro-2-methyl-	152	C11H20	002958-76-1	53



Data Path : Z:\voasrv\HPCHEM1\MSVOA\_D\Data\VD102423\  
 Data File : VD077397.D  
 Acq On : 24 Oct 2023 16:21  
 Operator : JC/SY  
 Sample : 05011-03  
 Misc : 5.05G/5.0ml/MSVOA\_D/SOIL  
 ALS Vial : 14 Sample Multiplier: 1

Instrument :  
 MSVOA\_D  
 ClientSampleId :  
 RBR-200010

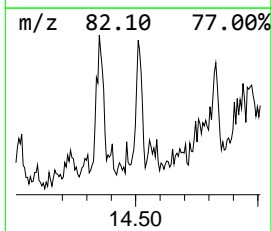
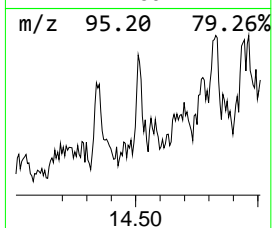
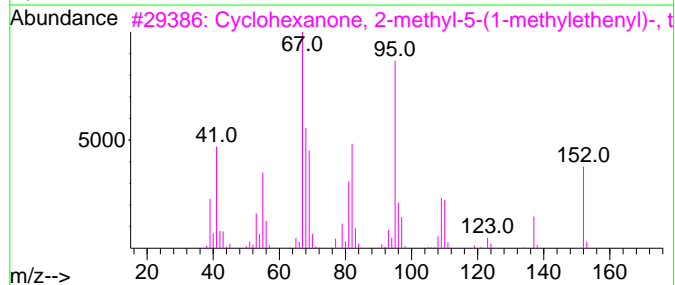
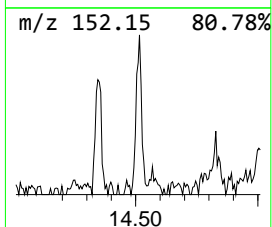
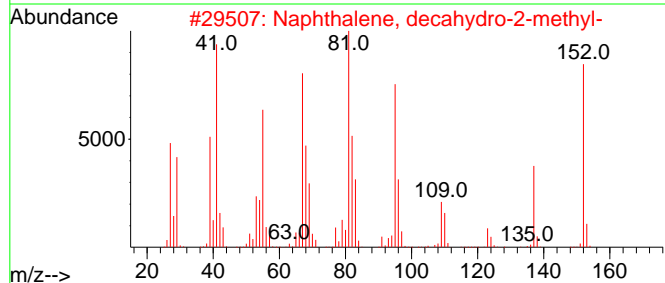
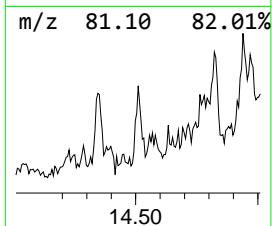
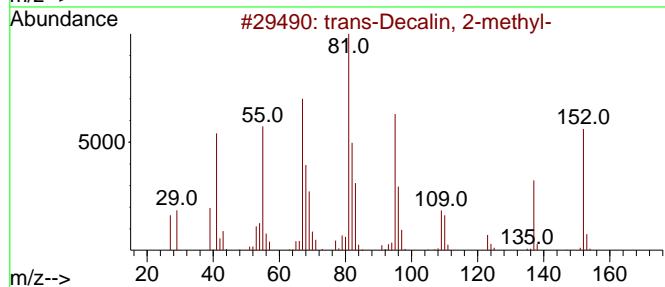
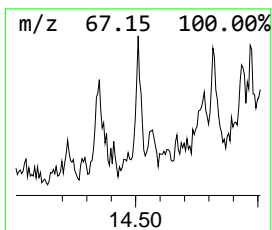
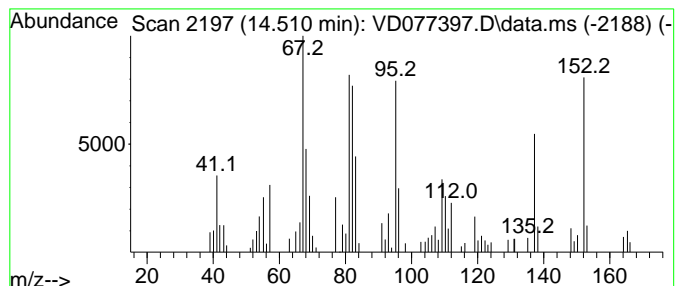
Quant Method : Z:\voasrv\HPCHEM1\MSVOA\_D\Method\82D101723S.M  
 Quant Title : SW846 8260

TIC Library : C:\Database\NIST20.L  
 TIC Integration Parameters: LSCINT.P

\*\*\*\*\*  
 Peak Number 4 trans-Decalin, 2-methyl- Concentration Rank 4

R.T.	EstConc	Area	Relative to ISTD	R.T.
14.510	24.30 ug/l	118711	1,4-Dichlorobenzene-d4	13.516

Hit#	of	5	Tentative ID	MW	MolForm	CAS#	Qual
1			trans-Decalin, 2-methyl-	152	C11H20	1000152-47-3	76
2			Naphthalene, decahydro-2-methyl-	152	C11H20	002958-76-1	62
3			Cyclohexanone, 2-methyl-5-(1-met...	152	C10H16O	005948-04-9	62
4			Cyclohexane, 1-methyl-3-(1-methy...	138	C10H18	024399-15-3	60
5			1-Methyl-2-methylenecyclohexane	110	C8H14	002808-75-5	55



Data Path : Z:\voasrv\HPCHEM1\MSVOA\_D\Data\VD102423\  
 Data File : VD077397.D  
 Acq On : 24 Oct 2023 16:21  
 Operator : JC/SY  
 Sample : 05011-03  
 Misc : 5.05G/5.0ml/MSVOA\_D/SOIL  
 ALS Vial : 14 Sample Multiplier: 1

Instrument :  
 MSVOA\_D  
 ClientSampleId :  
 RBR-200010

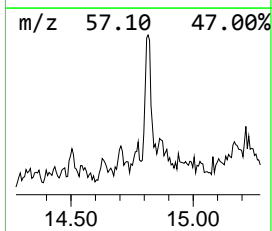
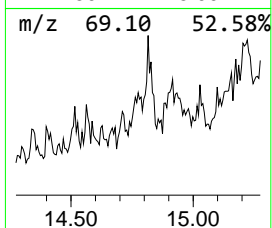
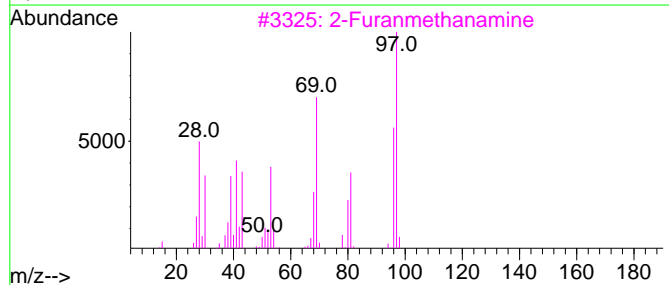
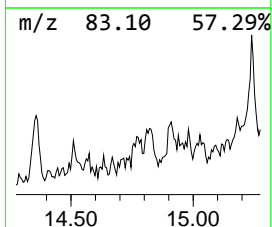
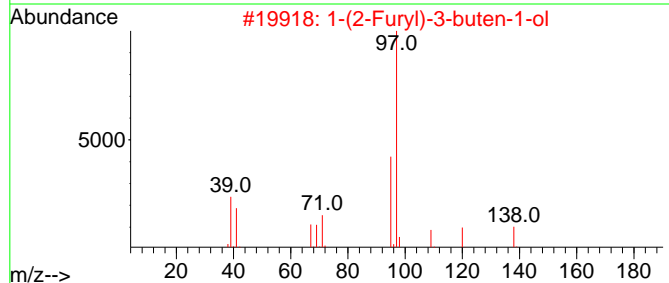
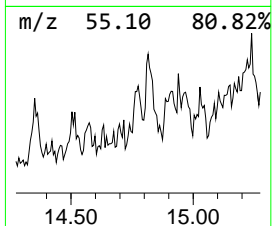
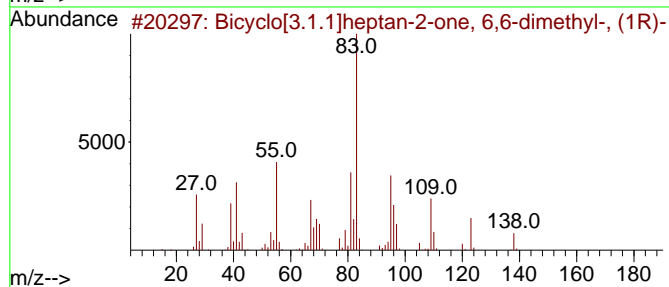
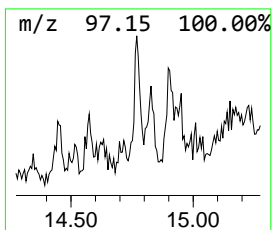
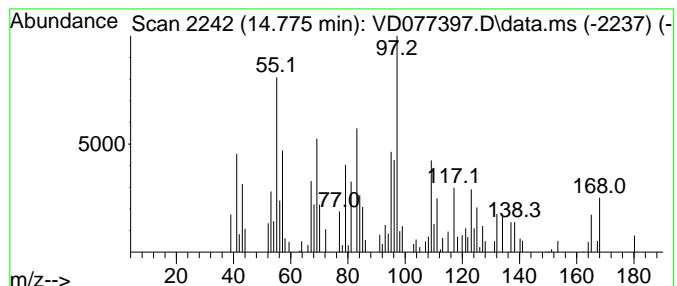
Quant Method : Z:\voasrv\HPCHEM1\MSVOA\_D\Method\82D101723S.M  
 Quant Title : SW846 8260

TIC Library : C:\Database\NIST20.L  
 TIC Integration Parameters: LSCINT.P

\*\*\*\*\*  
 Peak Number 5 unknown14.775 Concentration Rank 6

R.T.	EstConc	Area	Relative to ISTD	R.T.
14.775	16.90 ug/l	82567	1,4-Dichlorobenzene-d4	13.516

Hit#	of	5	Tentative ID	MW	MolForm	CAS#	Qual
1			Bicyclo[3.1.1]heptan-2-one, 6,6-...	138	C9H14O	038651-65-9	38
2			1-(2-Furyl)-3-buten-1-ol	138	C8H10O2	1000311-94-9	30
3			2-Furanmethanamine	97	C5H7NO	000617-89-0	30
4			Bicyclo[3.1.1]heptan-2-one, 6,6-...	138	C9H14O	024903-95-5	30
5			1-Azabicyclo[2.2.2]octan-3-one	125	C7H11NO	003731-38-2	30



Data Path : Z:\voasrv\HPCHEM1\MSVOA\_D\Data\VD102423\  
 Data File : VD077397.D  
 Acq On : 24 Oct 2023 16:21  
 Operator : JC/SY  
 Sample : 05011-03  
 Misc : 5.05G/5.0ml/MSVOA\_D/SOIL  
 ALS Vial : 14 Sample Multiplier: 1

Instrument :  
 MSVOA\_D  
 ClientSampleId :  
 RBR-200010

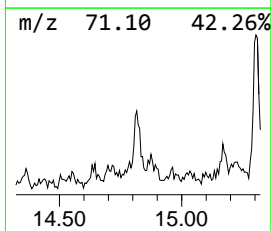
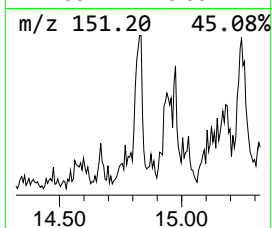
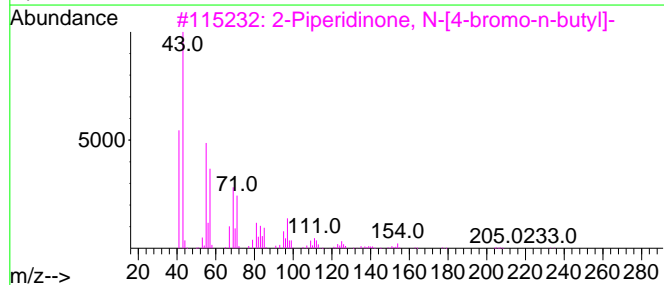
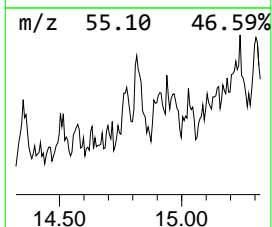
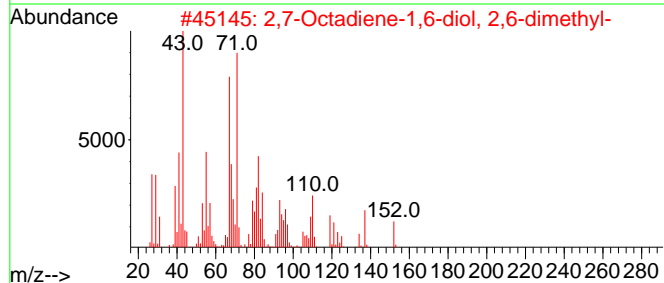
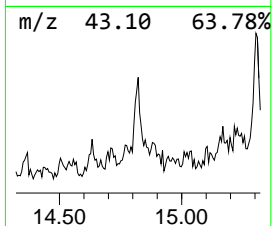
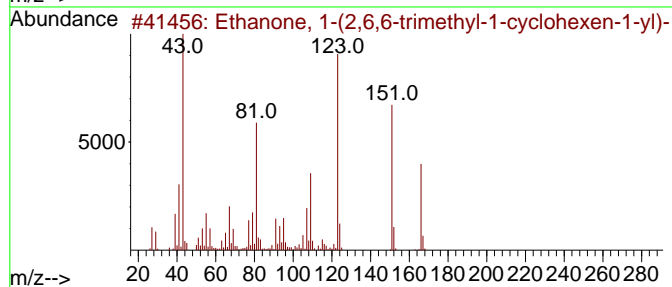
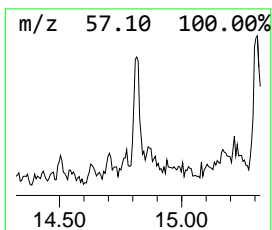
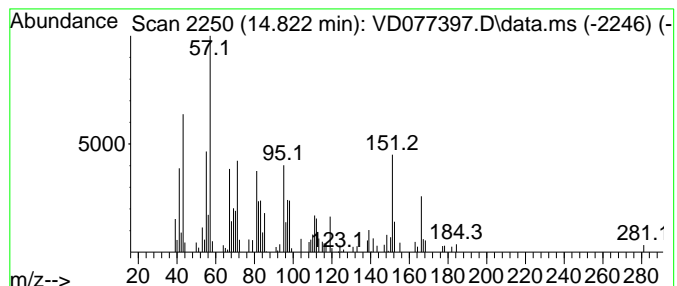
Quant Method : Z:\voasrv\HPCHEM1\MSVOA\_D\Method\82D101723S.M  
 Quant Title : SW846 8260

TIC Library : C:\Database\NIST0.L  
 TIC Integration Parameters: LSCINT.P

\*\*\*\*\*  
 Peak Number 6 unknown14.822 Concentration Rank 3

R.T.	EstConc	Area	Relative to ISTD	R.T.
14.822	24.96 ug/l	121918	1,4-Dichlorobenzene-d4	13.516

Hit#	of	5	Tentative ID	MW	MolForm	CAS#	Qual
1			Ethanone, 1-(2,6,6-trimethyl-1-c...	166	C11H18O	001197-92-8	22
2			2,7-Octadiene-1,6-diol, 2,6-dime...	170	C10H18O2	064142-78-5	22
3			2-Piperidinone, N-[4-bromo-n-but...	233	C9H16BrNO	195194-80-0	22
4			2-t-Butylimino-4-hydroxy-pent-3-...	166	C9H14N2O	1000186-22-1	14
5			2(3H)-Furanone, dihydro-5,5-dime...	184	C10H16O3	004436-81-1	11



Data Path : Z:\voasrv\HPCHEM1\MSVOA\_D\Data\VD102423\  
 Data File : VD077397.D  
 Acq On : 24 Oct 2023 16:21  
 Operator : JC/SY  
 Sample : 05011-03  
 Misc : 5.05G/5.0ml/MSVOA\_D/SOIL  
 ALS Vial : 14 Sample Multiplier: 1

Instrument :  
 MSVOA\_D  
 ClientSampleId :  
 RBR-200010

Quant Method : Z:\voasrv\HPCHEM1\MSVOA\_D\Method\82D101723S.M  
 Quant Title : SW846 8260

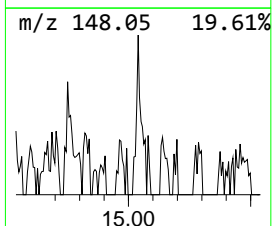
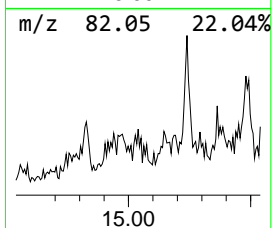
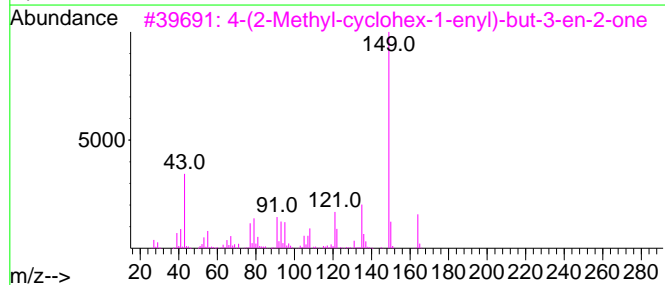
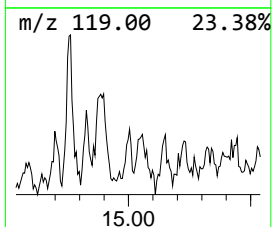
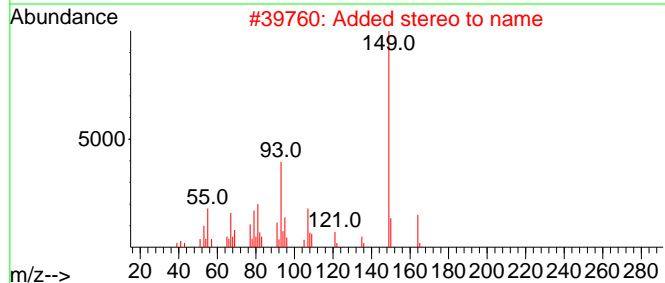
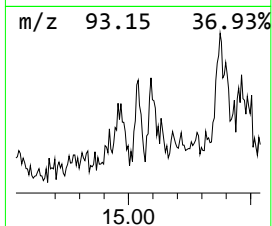
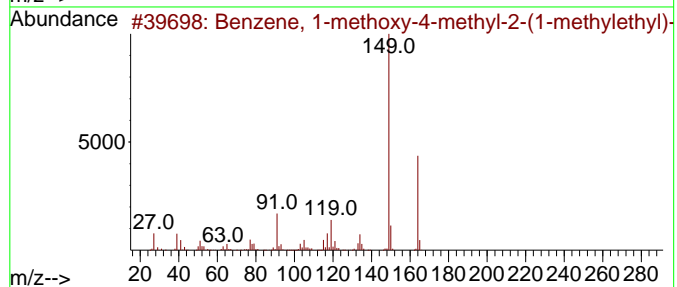
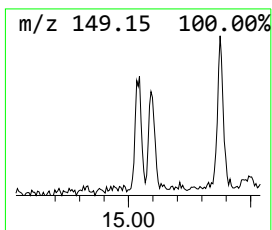
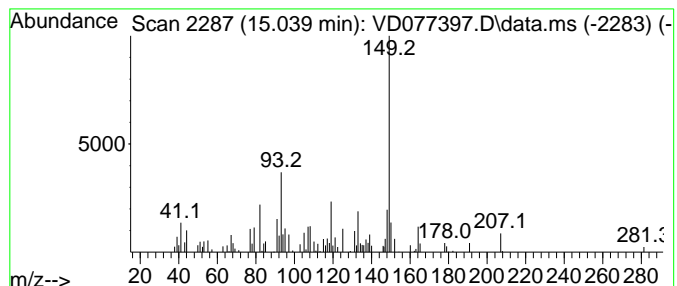
TIC Library : C:\Database\NIST20.L  
 TIC Integration Parameters: LSCINT.P

\*\*\*\*\*  
 Peak Number 7 Benzene, 1-methoxy-4-methyl... Concentration Rank 8

R.T.	EstConc	Area	Relative to ISTD	R.T.
15.039	14.27 ug/l	69720	1,4-Dichlorobenzene-d4	13.516

Hit#	of	5	Tentative ID	MW	MolForm	CAS#	Qual
1			Benzene, 1-methoxy-4-methyl-2-(1...	164	C11H16O	031574-44-4	58
2			Added stereo to name	164	C12H20	024145-88-8	53
3			4-(2-Methyl-cyclohex-1-enyl)-but...	164	C11H16O	041437-92-7	53
4			Benzene, 2-methoxy-4-methyl-1-(1...	164	C11H16O	001076-56-8	52
5			2-Ethyl-5-methyl-2-phenyl-4-hexe...	218	C15H22O	1000432-24-4	50





Data Path : Z:\voasrv\HPCHEM1\MSVOA\_D\Data\VD102423\  
 Data File : VD077397.D  
 Acq On : 24 Oct 2023 16:21  
 Operator : JC/SY  
 Sample : 05011-03  
 Misc : 5.05G/5.0ml/MSVOA\_D/SOIL  
 ALS Vial : 14 Sample Multiplier: 1

Instrument :  
 MSVOA\_D  
 ClientSampleId :  
 RBR-200010

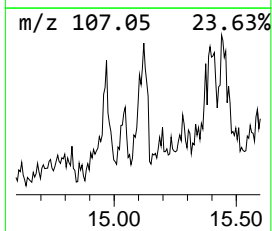
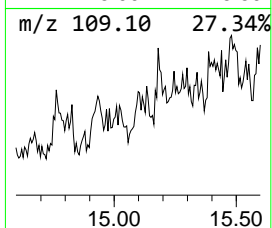
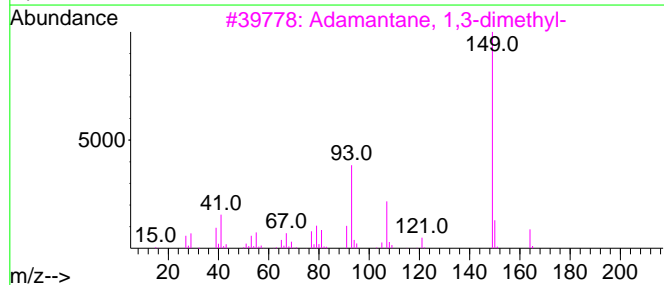
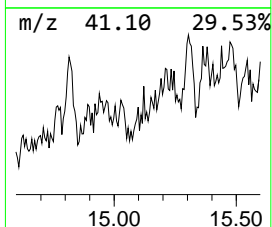
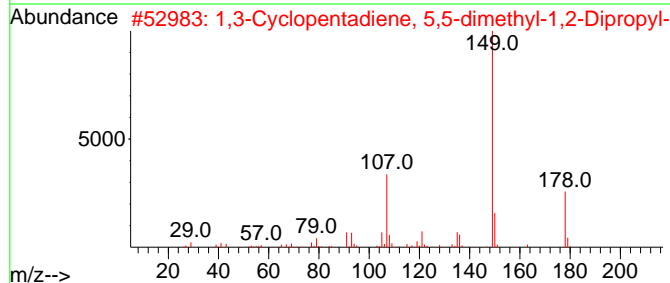
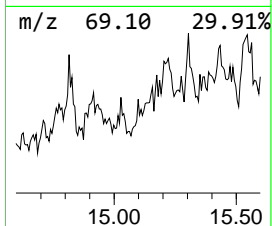
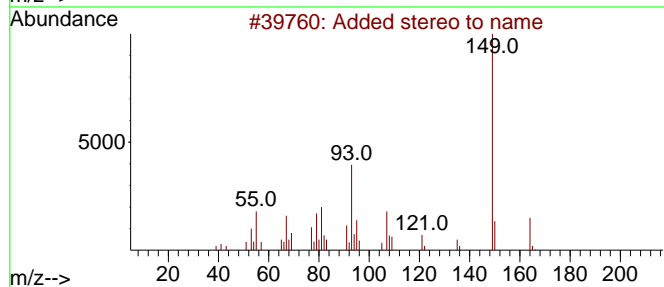
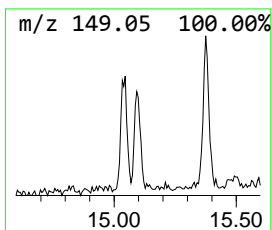
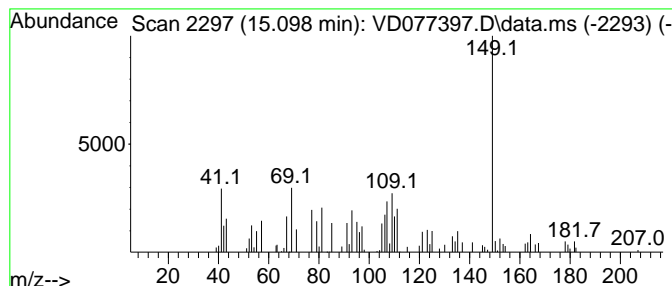
Quant Method : Z:\voasrv\HPCHEM1\MSVOA\_D\Method\82D101723S.M  
 Quant Title : SW846 8260

TIC Library : C:\Database\NIST0.L  
 TIC Integration Parameters: LSCINT.P

\*\*\*\*\*  
 Peak Number 8 unknown15.098 Concentration Rank 10

R.T.	EstConc	Area	Relative to ISTD	R.T.
15.098	10.80 ug/l	52761	1,4-Dichlorobenzene-d4	13.516

Hit#	of	5	Tentative ID	MW	MolForm	CAS#	Qual
1	Added stereo to name			164	C12H20	024145-88-8	47
2	1,3-Cyclopentadiene, 5,5-dimethy...			178	C13H22	1000163-88-0	47
3	Adamantane, 1,3-dimethyl-			164	C12H20	000702-79-4	43
4	5-Methyl-7-amino-s-triazolo(1,5-...			149	C6H7N5	033376-96-4	38
5	1-Methyl-1-hydroxymethyladamantane			180	C12H20O	001200-78-8	38



Data Path : Z:\voasrv\HPCHEM1\MSVOA\_D\Data\VD102423\  
 Data File : VD077397.D  
 Acq On : 24 Oct 2023 16:21  
 Operator : JC/SY  
 Sample : 05011-03  
 Misc : 5.05G/5.0ml/MSVOA\_D/SOIL  
 ALS Vial : 14 Sample Multiplier: 1

Instrument :  
 MSVOA\_D  
 ClientSampleId :  
 RBR-200010

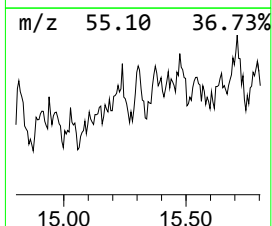
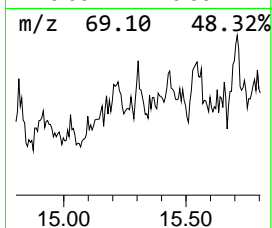
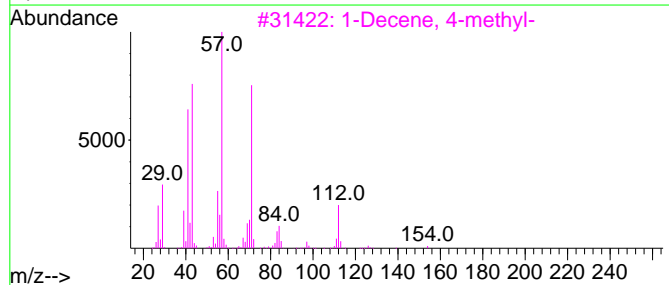
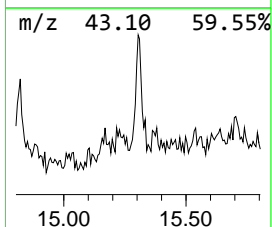
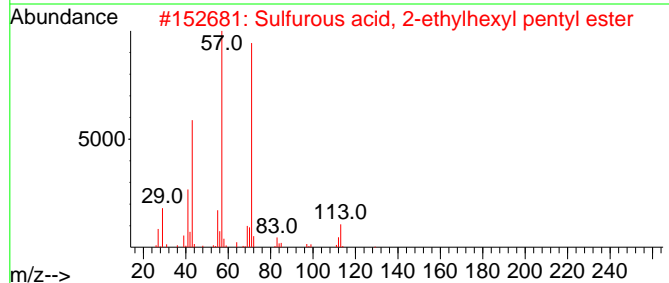
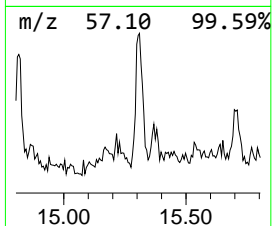
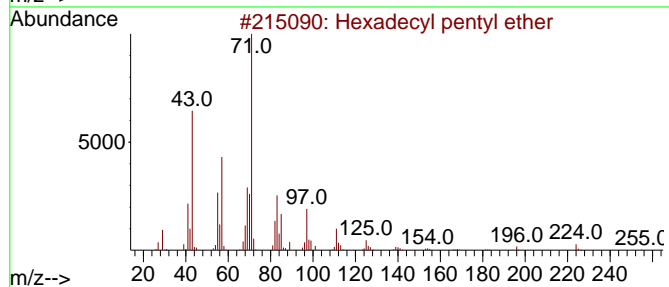
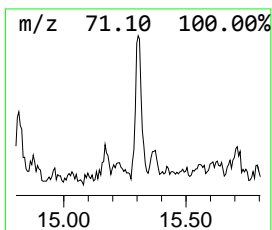
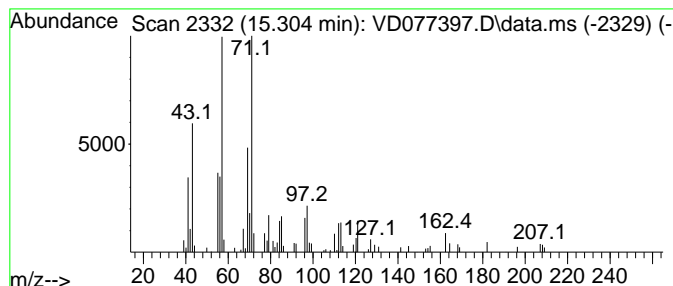
Quant Method : Z:\voasrv\HPCHEM1\MSVOA\_D\Method\82D101723S.M  
 Quant Title : SW846 8260

TIC Library : C:\Database\NIST20.L  
 TIC Integration Parameters: LSCINT.P

\*\*\*\*\*  
 Peak Number 9 Hexadecyl pentyl ether Concentration Rank 7

R.T.	EstConc	Area	Relative to ISTD	R.T.
15.304	15.81 ug/l	77243	1,4-Dichlorobenzene-d4	13.516

Hit#	of	5	Tentative ID	MW	MolForm	CAS#	Qual
1			Hexadecyl pentyl ether	312	C21H44O	1000406-41-8	53
2			Sulfurous acid, 2-ethylhexyl pen...	264	C13H28O3S	1000309-18-9	50
3			1-Decene, 4-methyl-	154	C11H22	013151-29-6	50
4			Sulfurous acid, butyl undecyl ester	292	C15H32O3S	1000309-17-8	50
5			Heptane, 5-ethyl-2-methyl-	142	C10H22	013475-78-0	50



Data Path : Z:\voasrv\HPCHEM1\MSVOA\_D\Data\VD102423\  
 Data File : VD077397.D  
 Acq On : 24 Oct 2023 16:21  
 Operator : JC/SY  
 Sample : 05011-03  
 Misc : 5.05G/5.0ml/MSVOA\_D/SOIL  
 ALS Vial : 14 Sample Multiplier: 1

Instrument :  
 MSVOA\_D  
 ClientSampleId :  
 RBR-200010

Quant Method : Z:\voasrv\HPCHEM1\MSVOA\_D\Method\82D101723S.M  
 Quant Title : SW846 8260

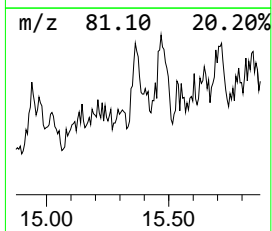
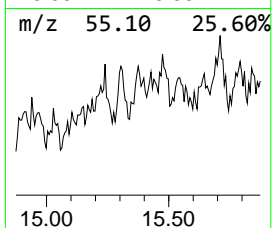
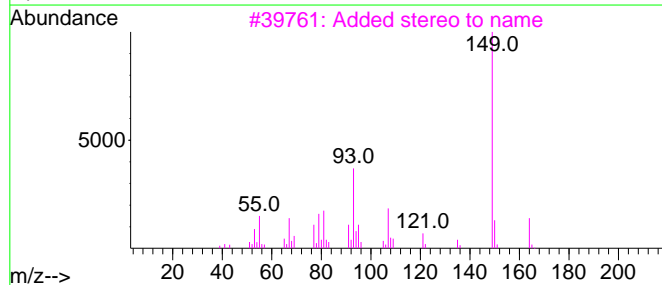
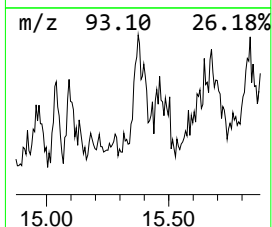
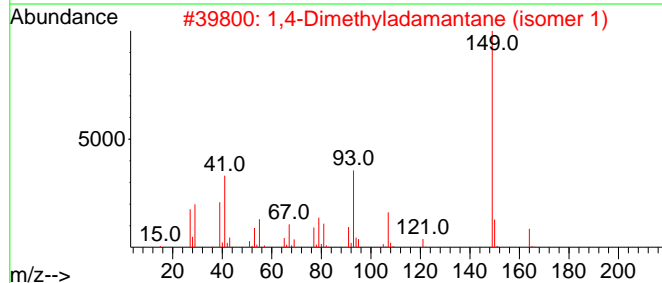
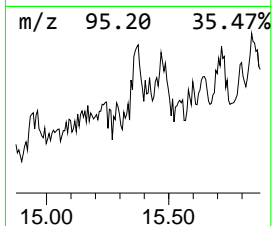
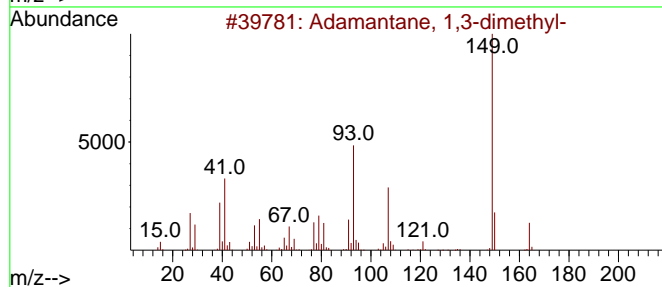
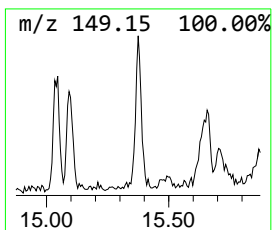
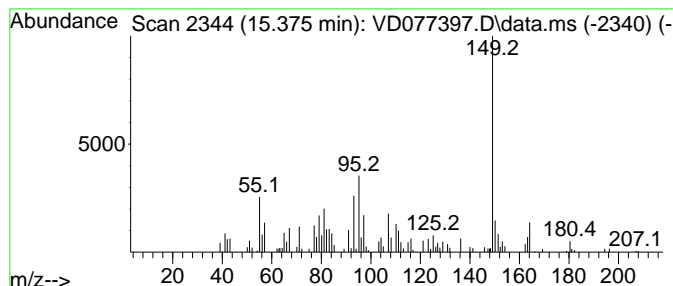
TIC Library : C:\Database\NIST0.L  
 TIC Integration Parameters: LSCINT.P

\*\*\*\*\*  
 Peak Number 10 Adamantane, 1,3-dimethyl- Concentration Rank 5

R.T.	EstConc	Area	Relative to ISTD	R.T.
15.375	20.69 ug/l	101050	1,4-Dichlorobenzene-d4	13.516

Hit#	of 5	Tentative ID	MW	MolForm	CAS#	Qual
1		Adamantane, 1,3-dimethyl-	164	C12H20	000702-79-4	62
2		1,4-Dimethyladamantane (isomer 1)	164	C12H20	1000460-67-0	60
3		Added stereo to name	164	C12H20	024145-89-9	58
4		1-Methyl-3-ethyladamantane	178	C13H22	001687-34-9	53
5		1,3-Cyclohexadiene, 1,3,5,5,6,6-...	164	C12H20	1000150-39-4	50



Data Path : Z:\voasrv\HPCHEM1\MSVOA\_D\Data\VD102423\  
 Data File : VD077397.D  
 Acq On : 24 Oct 2023 16:21  
 Operator : JC/SY  
 Sample : 05011-03  
 Misc : 5.05G/5.0ml/MSVOA\_D/SOIL  
 ALS Vial : 14 Sample Multiplier: 1

Instrument :  
 MSVOA\_D  
 ClientSampleId :  
 RBR-200010

Quant Method : Z:\voasrv\HPCHEM1\MSVOA\_D\Method\82D101723S.M  
 Quant Title : SW846 8260

TIC Library : C:\Database\NIST0.L  
 TIC Integration Parameters: LSCINT.P

TIC Top Hit name	RT	EstConc	Units	Response	--Internal Standard--			
					#	RT	Resp	Conc
Naphthalene, de...	13.839	13.2	ug/l	64513	4	13.516	244213	50.0
Cyclohexanone, ...	14.351	30.6	ug/l	149393	4	13.516	244213	50.0
trans-Decalin, ...	14.510	24.3	ug/l	118711	4	13.516	244213	50.0
unknown14.775	14.775	16.9	ug/l	82567	4	13.516	244213	50.0
unknown14.822	14.822	25.0	ug/l	121918	4	13.516	244213	50.0
Benzene, 1-meth...	15.039	14.3	ug/l	69720	4	13.516	244213	50.0
unknown15.098	15.098	10.8	ug/l	52761	4	13.516	244213	50.0
Hexadecyl penty...	15.304	15.8	ug/l	77243	4	13.516	244213	50.0
Adamantane, 1,3...	15.375	20.7	ug/l	101050	4	13.516	244213	50.0