

Data Path : Z:\VOASRV\HPCHEM1\MSVOA\_D\DATA\VD102618\  
 Data File : VD060218.D  
 Acq On : 26 Oct 2018 16:08  
 Operator : JC/SY  
 Sample : J5658-07RE  
 Misc : 5.02g/5ml/MSVOA\_D/SOIL  
 ALS Vial : 6 Sample Multiplier: 1

Instrument :  
 MSVOA\_D  
 ClientSampleId :  
 JC-TS-005

Quant Time: Oct 26 23:43:07 2018  
 Quant Method : Z:\VOASRV\HPCHEM1\MSVOA\_D\METHOD\82D100118S.M  
 Quant Title : SW846 8260  
 QLast Update : Tue Oct 02 06:56:35 2018  
 Response via : Initial Calibration

Internal Standards	R.T.	QIon	Response	Conc	Units	Dev(Min)
1) Pentafluorobenzene	6.41	168	1519672	50.00	ug/l	0.02
34) 1,4-Difluorobenzene	7.44	114	2121612	50.00	ug/l	0.02
63) Chlorobenzene-d5	11.28	117	1576437	50.00	ug/l	0.01
72) 1,4-Dichlorobenzene-d4	13.37	152	626353	50.00	ug/l	0.01

## System Monitoring Compounds

33) 1,2-Dichloroethane-d4	6.78	65	670313	58.19	ug/l	0.02
Spiked Amount				50.000		
			Recovery	=	116.38%	
35) Dibromofluoromethane	6.32	113	831870	51.63	ug/l	0.02
Spiked Amount				50.000		
			Recovery	=	103.26%	
50) Toluene-d8	9.46	98	2178639	47.42	ug/l	0.02
Spiked Amount				50.000		
			Recovery	=	94.84%	
62) 4-Bromofluorobenzene	12.42	95	669447	38.92	ug/l	0.00
Spiked Amount				50.000		
			Recovery	=	77.84%	

## Target Compounds

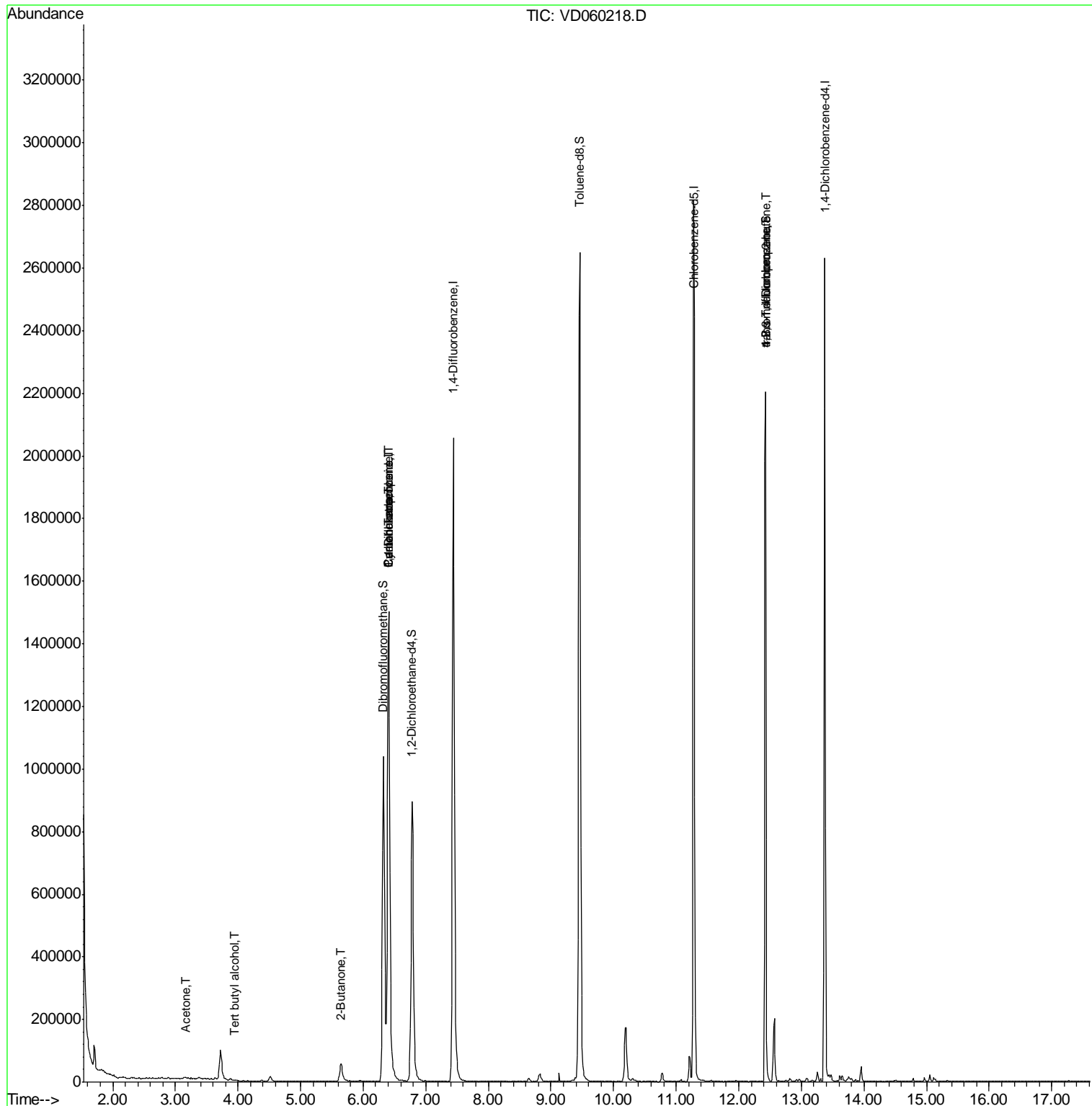
					Qvalue	
11) Tert butyl alcohol	3.96	59	4174	5.052	ug/l #	74
16) Acetone	3.16	43	14830	7.095	ug/l	96
20) Methylene Chloride	3.72	84	61795	Below Cal		94
25) 2-Butanone	5.63	43	6064	1.161	ug/l #	59
31) Cyclohexane	6.40	56	27581	1.105	ug/l #	1
36) 1,1-Dichloropropene	6.41	75	111180	5.484	ug/l #	45
38) Carbon Tetrachloride	6.41	117	116836	6.349	ug/l #	15
76) 1,2,3-Trichloropropane	12.42	75	270502	29.988	ug/l #	45
81) trans-1,4-Dichloro-2-buten	12.42	75	271890	107.272	ug/l #	13

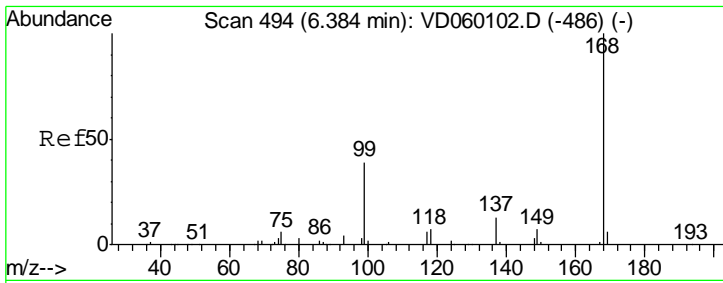
(#) = qualifier out of range (m) = manual integration (+) = signals summed

Data Path : Z:\VOASRV\HPCHEM1\MSVOA\_D\DATA\VD102618\  
 Data File : VD060218.D  
 Acq On : 26 Oct 2018 16:08  
 Operator : JC/SY  
 Sample : J5658-07RE  
 Misc : 5.02g/5ml/MSVOA\_D/SOIL  
 ALS Vial : 6 Sample Multiplier: 1

Instrument :  
 MSVOA\_D  
 Client Sampled :  
 JC-TS-005

Quant Time: Oct 26 23:43:07 2018  
 Quant Method : Z:\VOASRV\HPCHEM1\MSVOA\_D\METHOD\82D100118S.M  
 Quant Title : SW846 8260  
 QLast Update : Tue Oct 02 06:56:35 2018  
 Response via : Initial Calibration

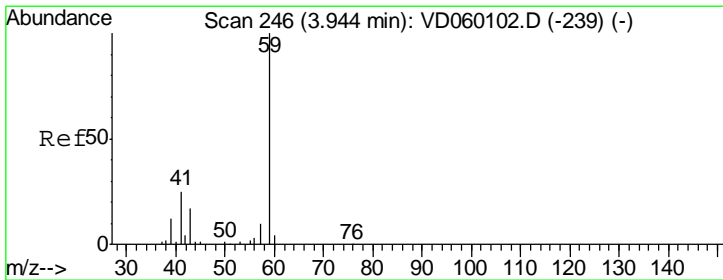
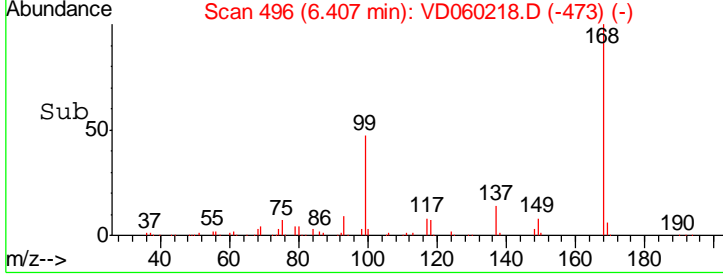
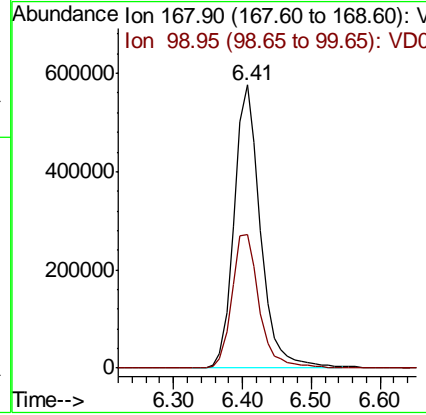
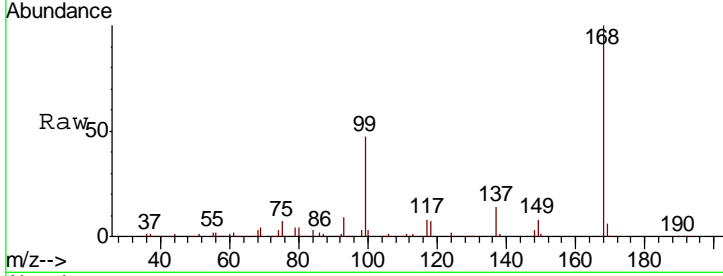




#1  
 Pentafluorobenzene  
 Concen: 50.000 ug/l  
 RT: 6.41 min Scan# 496  
 Delta R.T. 0.02 min  
 Lab File: VD060218.D  
 Acq: 26 Oct 2018 16:08

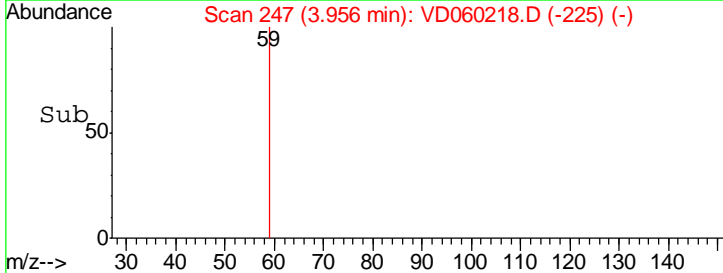
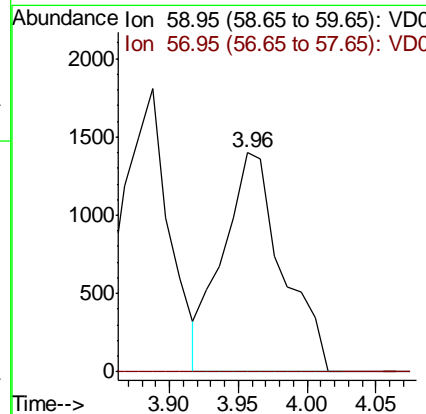
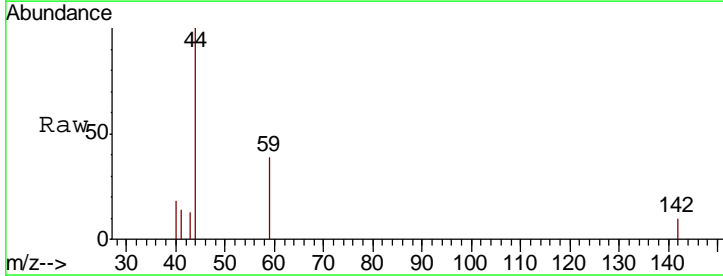
Instrument : MSVOA\_D  
 ClientSampled : JC-TS-005

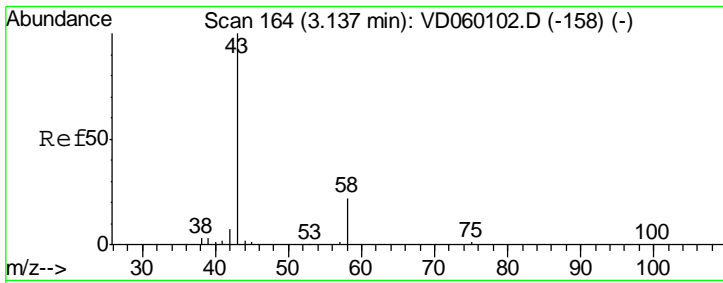
Tgt Ion: 168 Resp: 1519672  
 Ion Ratio Lower Upper  
 168 100  
 99 47.3 35.4 53.0



#11  
 Tert butyl alcohol  
 Concen: 5.052 ug/l  
 RT: 3.96 min Scan# 247  
 Delta R.T. 0.01 min  
 Lab File: VD060218.D  
 Acq: 26 Oct 2018 16:08

Tgt Ion: 59 Resp: 4174  
 Ion Ratio Lower Upper  
 59 100  
 57 0.0 7.8 11.6#

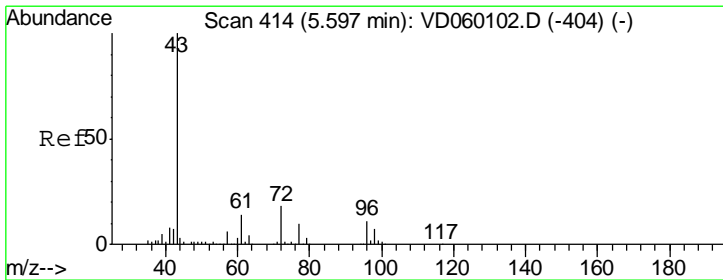
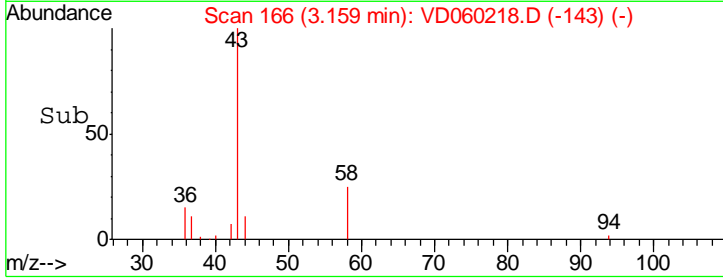
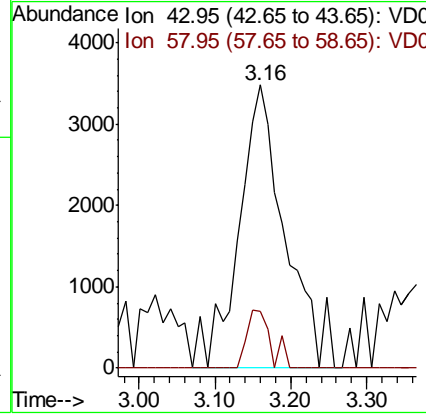
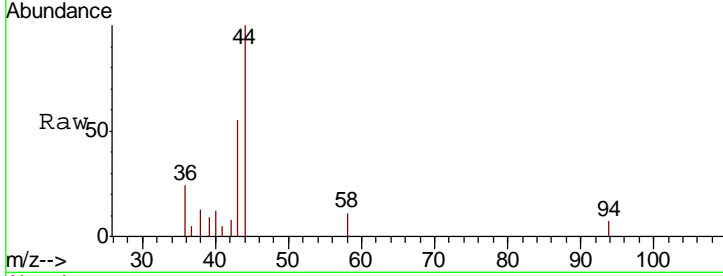




#16  
 Acetone  
 Concen: 7.095 ug/l  
 RT: 3.16 min Scan# 166  
 Delta R.T. 0.02 min  
 Lab File: VD060218.D  
 Acq: 26 Oct 2018 16:08

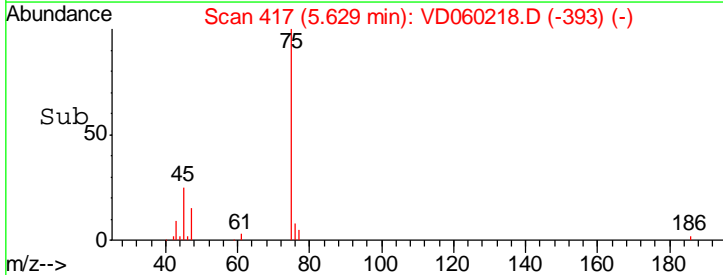
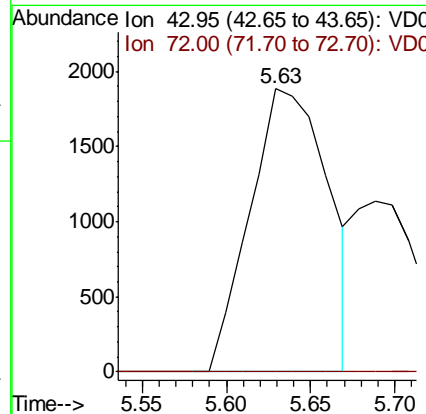
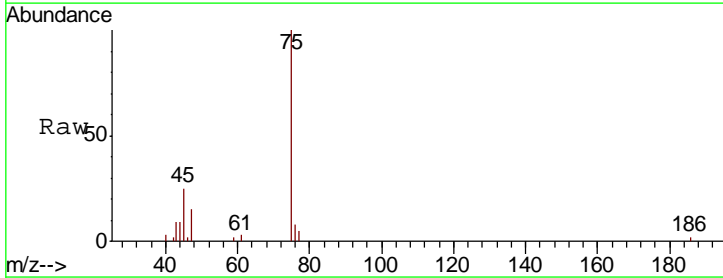
Instrument :  
 MSVOA\_D  
 ClientSampled :  
 JC-TS-005

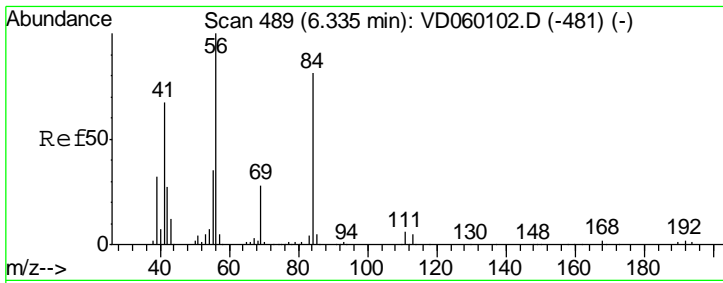
Tgt Ion: 43 Resp: 14830  
 Ion Ratio Lower Upper  
 43 100  
 58 20.2 17.7 26.5



#25  
 2-Butanone  
 Concen: 1.161 ug/l  
 RT: 5.63 min Scan# 417  
 Delta R.T. 0.03 min  
 Lab File: VD060218.D  
 Acq: 26 Oct 2018 16:08

Tgt Ion: 43 Resp: 6064  
 Ion Ratio Lower Upper  
 43 100  
 72 0.0 14.5 21.7#

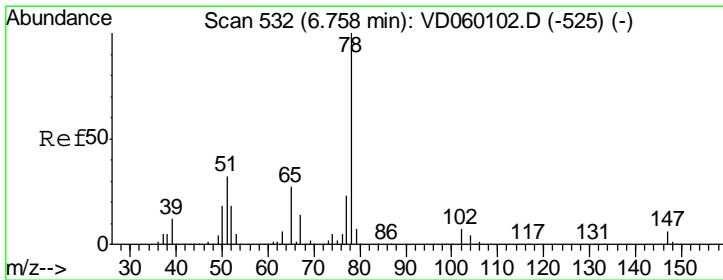
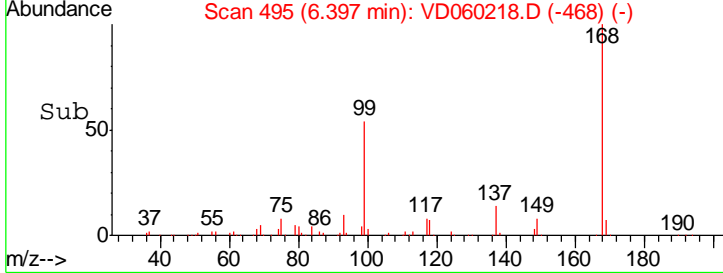
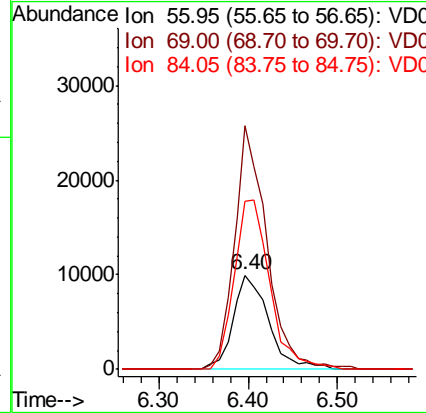
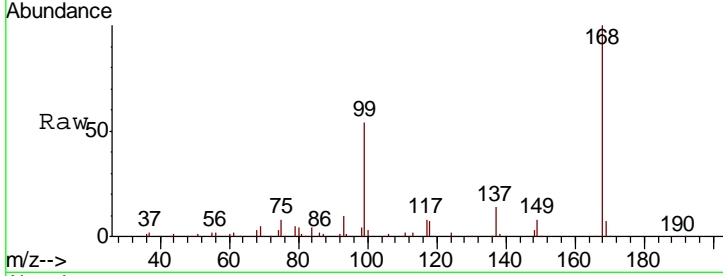




#31  
 Cyclohexane  
 Concen: 1.105 ug/l  
 RT: 6.40 min Scan# 495  
 Delta R.T. 0.06 min  
 Lab File: VD060218.D  
 Acq: 26 Oct 2018 16:08

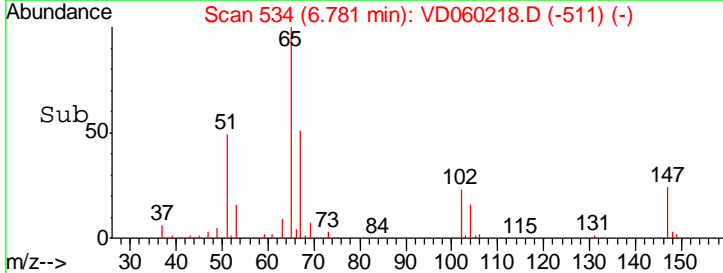
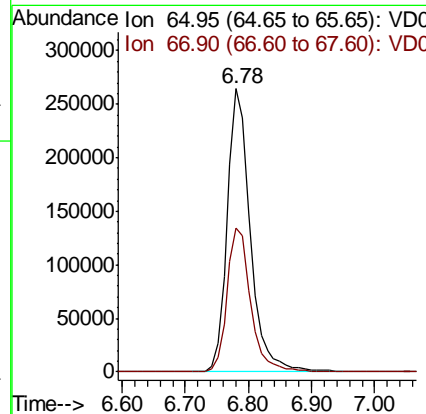
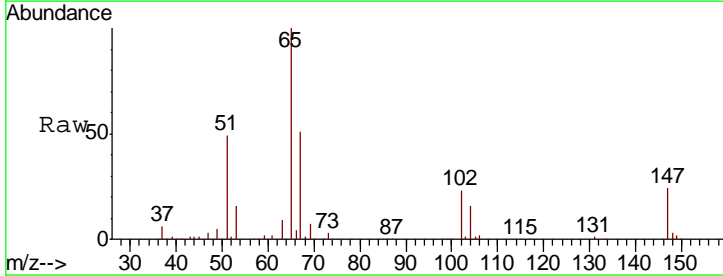
Instrument :  
 MSVOA\_D  
 ClientSampled :  
 JC-TS-005

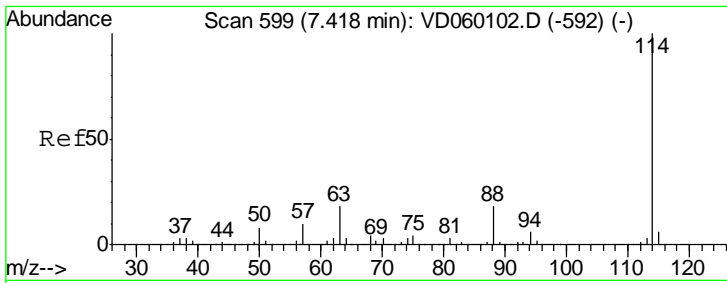
Tgt Ion	Resp	Lower	Upper
56	100		
69	258.7	22.8	34.2#
84	178.0	64.9	97.3#



#33  
 1,2-Dichloroethane-d4  
 Concen: N.D. ug/l  
 RT: 6.78 min Scan# 534  
 Delta R.T. 0.02 min  
 Lab File: VD060218.D  
 Acq: 26 Oct 2018 16:08

Tgt Ion	Resp	Lower	Upper
65	100		
67	50.8	0.0	106.2



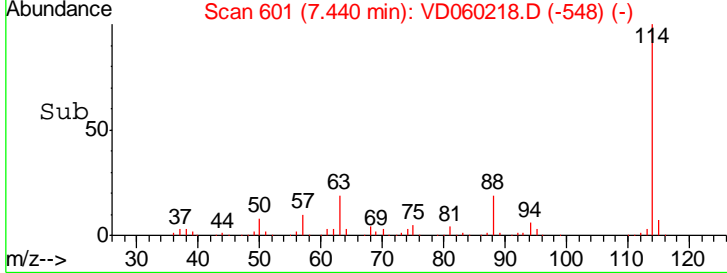
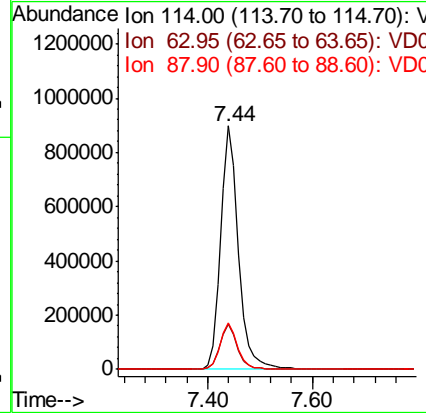
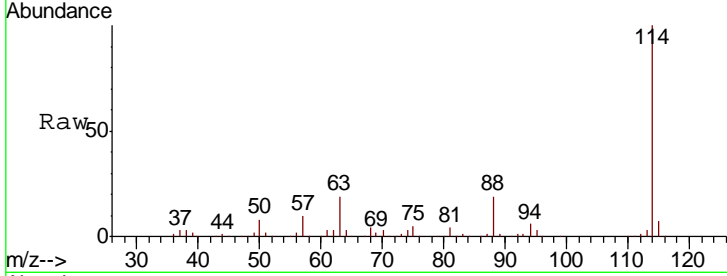


#34  
 1,4-Difluorobenzene  
 Concen: 50.000 ug/l  
 RT: 7.44 min Scan# 601  
 Delta R.T. 0.02 min  
 Lab File: VD060218.D  
 Acq: 26 Oct 2018 16:08

Instrument :  
 MSVOA\_D  
 ClientSampleId :  
 JC-TS-005

Tgt Ion:114 Resp: 2121612

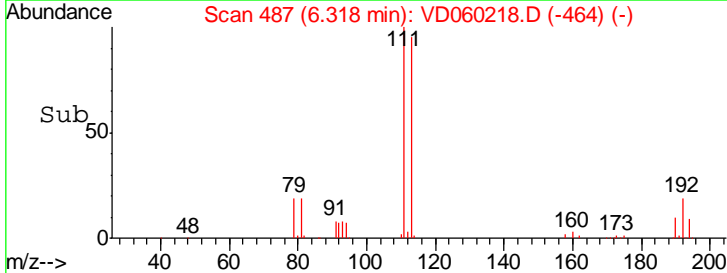
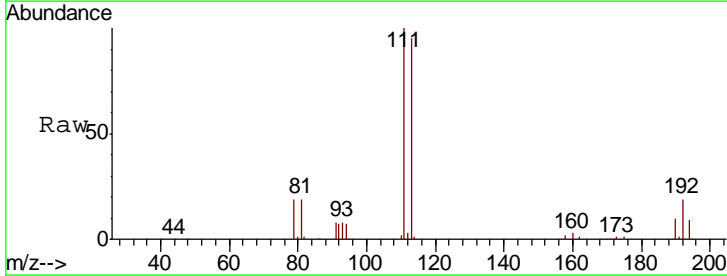
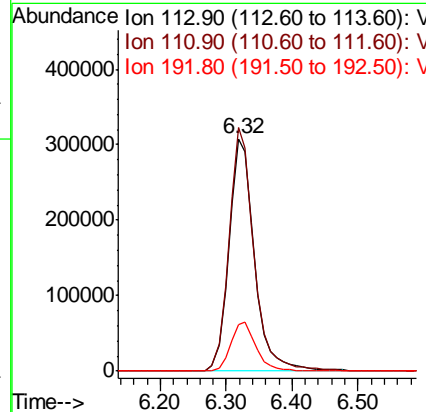
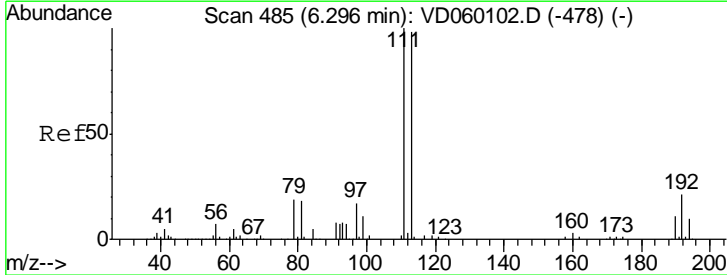
Ion	Ratio	Lower	Upper
114	100		
63	18.6	0.0	36.0
88	19.0	0.0	36.2

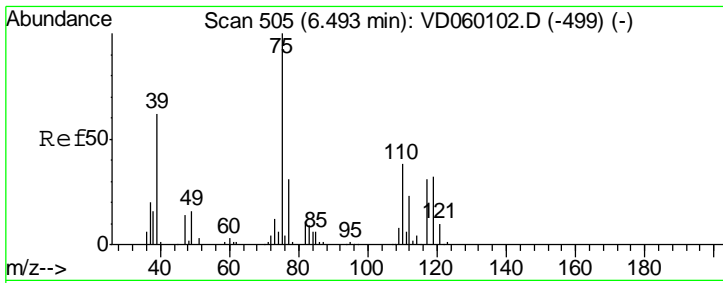


#35  
 Dibromofluoromethane  
 Concen: 50.000 ug/l  
 RT: 6.32 min Scan# 487  
 Delta R.T. 0.02 min  
 Lab File: VD060218.D  
 Acq: 26 Oct 2018 16:08

Tgt Ion:113 Resp: 831870

Ion	Ratio	Lower	Upper
113	100		
111	104.8	81.5	122.3
192	20.0	17.4	26.0

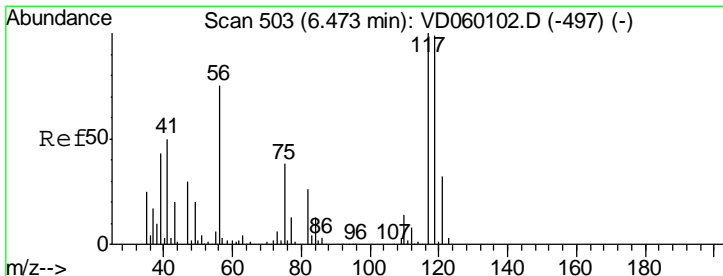
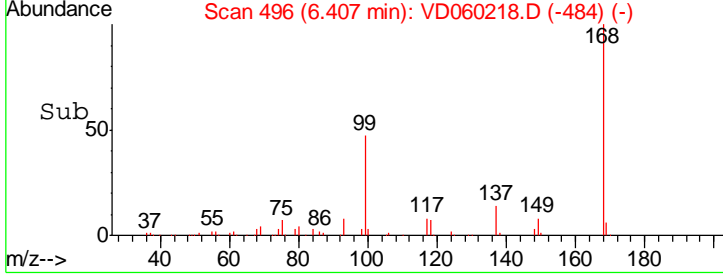
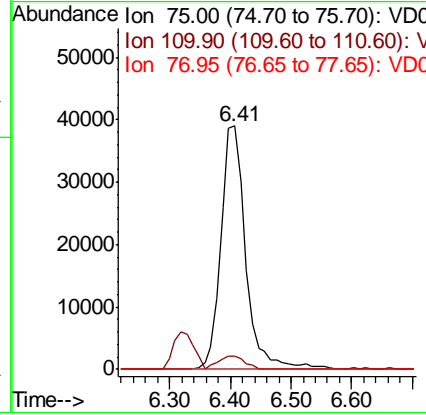
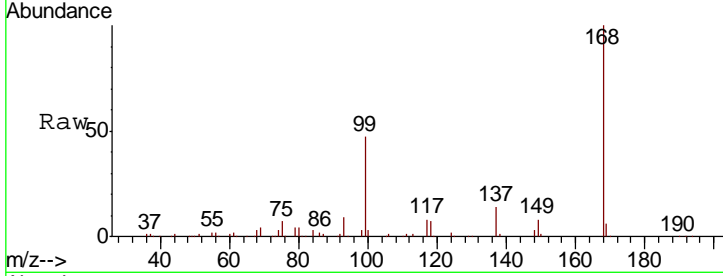




#36  
 1,1-Dichloropropene  
 Concen: 5.484 ug/l  
 RT: 6.41 min Scan# 496  
 Delta R.T. -0.09 min  
 Lab File: VD060218.D  
 Acq: 26 Oct 2018 16:08

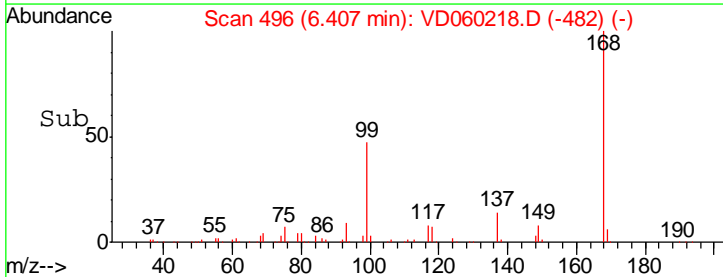
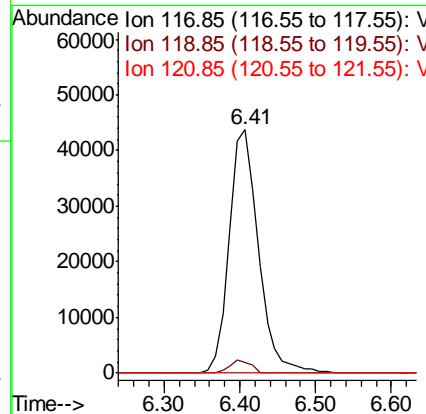
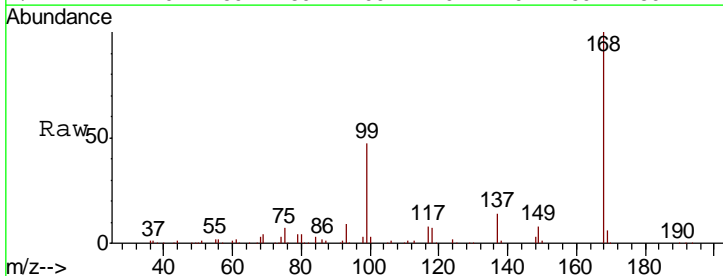
Instrument :  
 MSVOA\_D  
 ClientSampled :  
 JC-TS-005

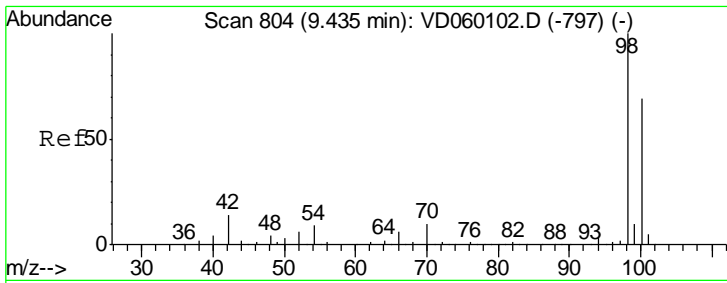
Tgt Ion	Resp	Lower	Upper
75	111180		
110	5.7	19.0	57.0#
77	0.0	24.9	37.3#



#38  
 Carbon Tetrachloride  
 Concen: 6.349 ug/l  
 RT: 6.41 min Scan# 496  
 Delta R.T. -0.07 min  
 Lab File: VD060218.D  
 Acq: 26 Oct 2018 16:08

Tgt Ion	Resp	Lower	Upper
117	116836		
119	4.5	77.8	116.6#
121	0.0	24.8	37.2#

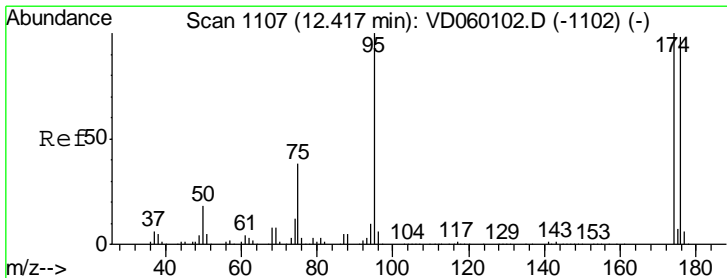
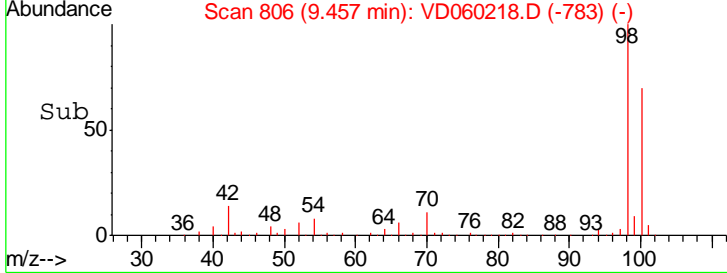
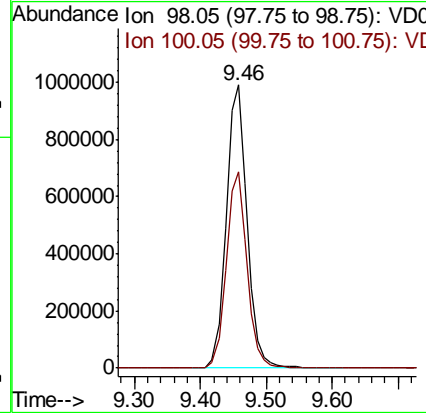
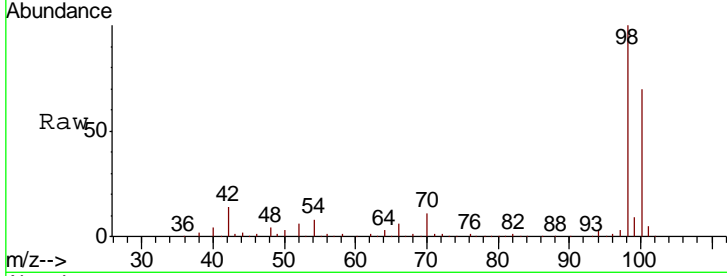




#50  
 Toluene-d8  
 Concen: N.D. ug/l  
 RT: 9.46 min Scan# 806  
 Delta R.T. 0.02 min  
 Lab File: VD060218.D  
 Acq: 26 Oct 2018 16:08

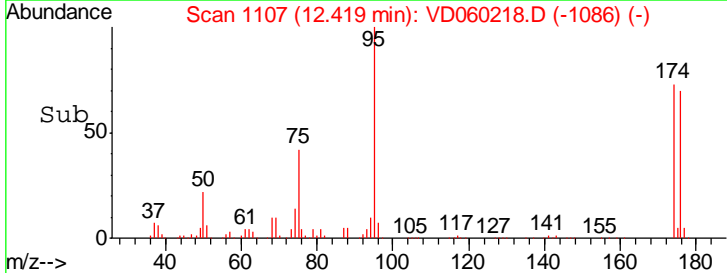
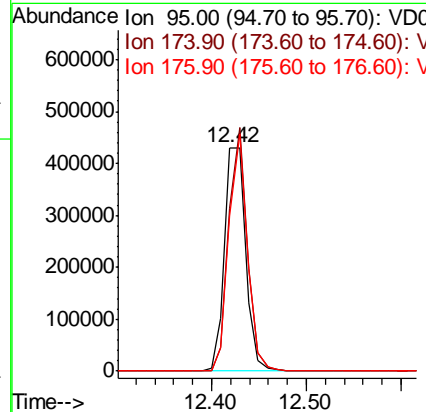
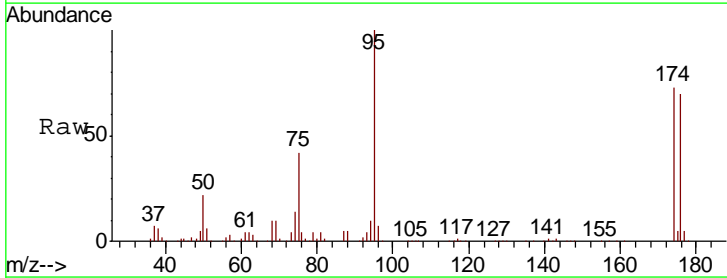
**Instrument :**  
 MSVOA\_D  
**ClientSampled :**  
 JC-TS-005

Tgt Ion: 98 Resp: 2178639  
 Ion Ratio Lower Upper  
 98 100  
 100 69.5 55.4 83.0

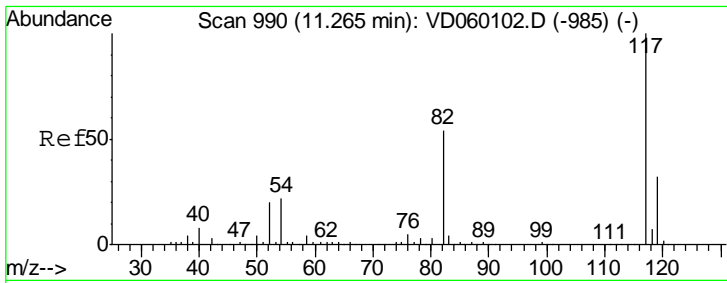


#62  
 4-Bromofluorobenzene  
 Concen: Below ug/l  
 RT: 12.42 min Scan# 1107  
 Delta R.T. 0.00 min  
 Lab File: VD060218.D  
 Acq: 26 Oct 2018 16:08

Tgt Ion: 95 Resp: 669447  
 Ion Ratio Lower Upper  
 95 100  
 174 73.1 0.0 200.2  
 176 69.7 0.0 195.6





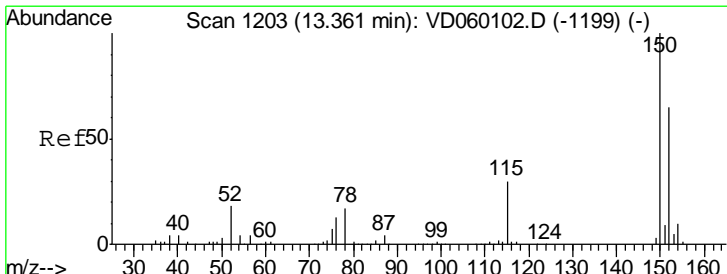
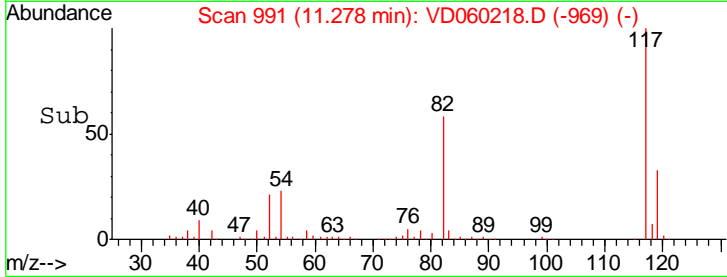
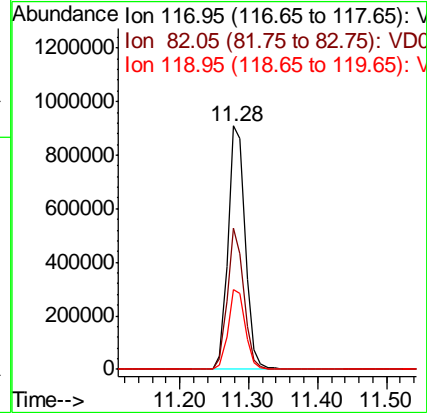
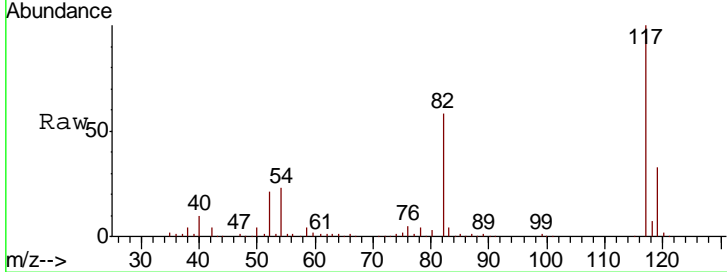


#63  
 Chlorobenzene-d5  
 Concen: 50.000 ug/l  
 RT: 11.28 min Scan# 991  
 Delta R.T. 0.01 min  
 Lab File: VD060218.D  
 Acq: 26 Oct 2018 16:08

Instrument :  
 MSVOA\_D  
 ClientSampled :  
 JC-TS-005

Tgt Ion:117 Resp: 1576437

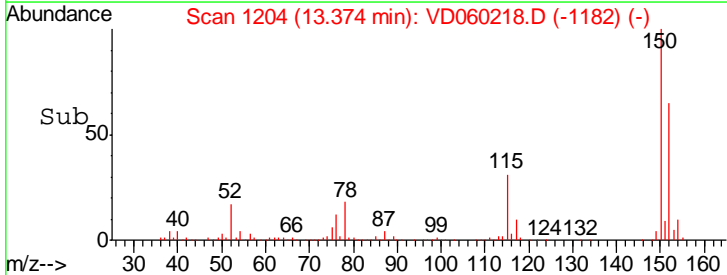
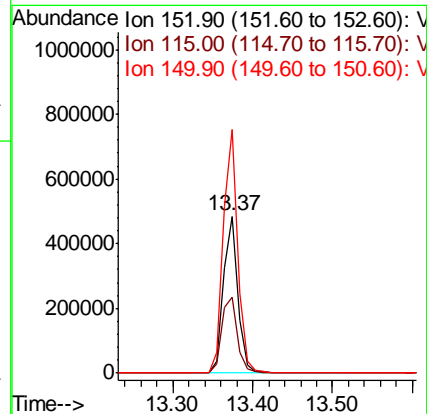
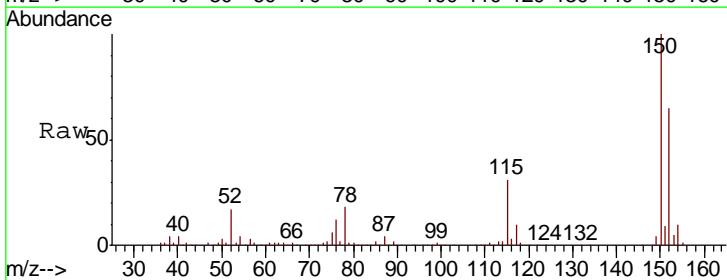
Ion	Ratio	Lower	Upper
117	100		
82	57.9	43.4	65.2
119	32.6	26.0	39.0

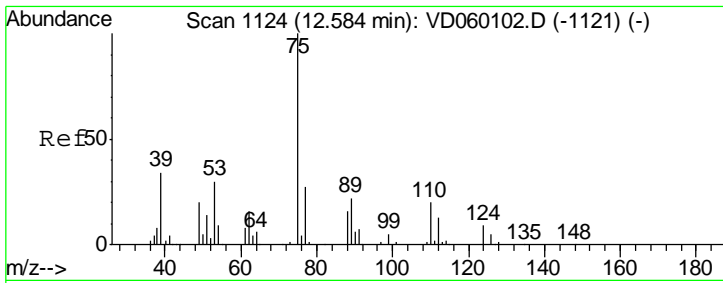


#72  
 1,4-Dichlorobenzene-d4  
 Concen: 50.000 ug/l  
 RT: 13.37 min Scan# 1204  
 Delta R.T. 0.01 min  
 Lab File: VD060218.D  
 Acq: 26 Oct 2018 16:08

Tgt Ion:152 Resp: 626353

Ion	Ratio	Lower	Upper
152	100		
115	48.4	27.1	81.2
150	155.0	0.0	311.8

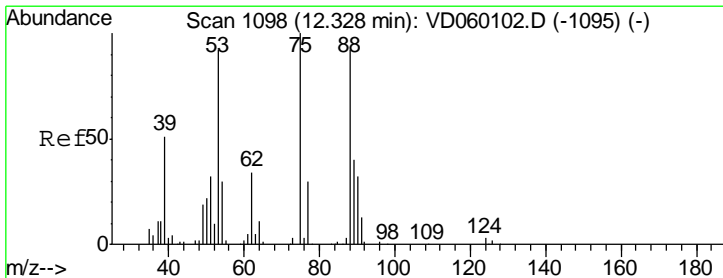
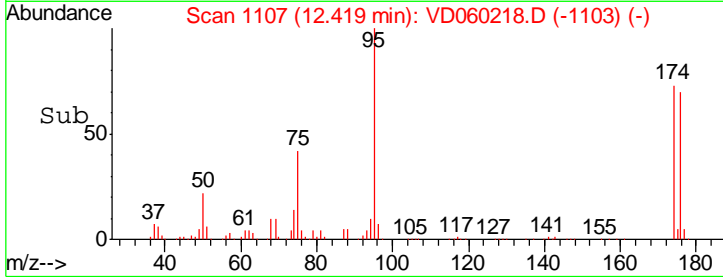
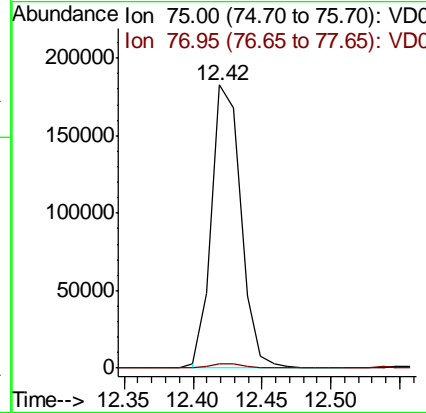
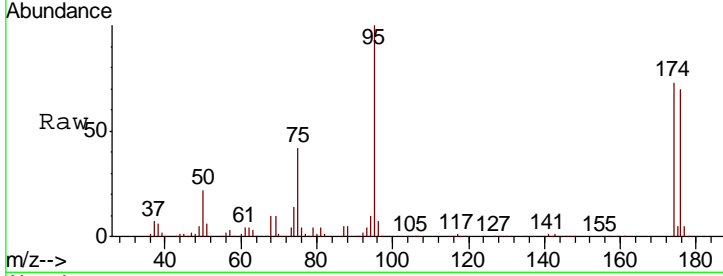




#76  
 1,2,3-Trichloropropane  
 Concen: 29.988 ug/l  
 RT: 12.42 min Scan# 1107  
 Delta R.T. -0.16 min  
 Lab File: VD060218.D  
 Acq: 26 Oct 2018 16:08

Instrument :  
 MSVOA\_D  
 ClientSampled :  
 JC-TS-005

Tgt Ion: 75 Resp: 270502  
 Ion Ratio Lower Upper  
 75 100  
 77 1.7 16.3 48.9#



#81  
 trans-1,4-Dichloro-2-butene  
 Concen: 107.272 ug/l  
 RT: 12.42 min Scan# 1107  
 Delta R.T. 0.09 min  
 Lab File: VD060218.D  
 Acq: 26 Oct 2018 16:08

Tgt Ion: 75 Resp: 271890  
 Ion Ratio Lower Upper  
 75 100  
 53 0.0 73.0 109.6#  
 89 0.0 32.0 48.0#

