

Data Path : Z:\VOASRV\HPCHEM1\MSVOA D\DATA\VD102820\  
 Data File : VD067437.D  
 Acq On : 28 Oct 2020 16:56  
 Operator : VA/SY  
 Sample : L4547-02  
 Misc : 8.03G/5.00ml/MSVOA D/SOIL  
 ALS Vial : 13 Sample Multiplier: 1

**Instrument :**  
 MSVOA\_D  
**ClientSampleId :**  
 TT-033-IDWSO-20201027

Quant Time: Oct 29 01:17:50 2020  
 Quant Method : Z:\VOASRV\HPCHEM1\MSVOA\_D\METHOD\82D101320S.M  
 Quant Title : SW846 8260  
 QLast Update : Mon Oct 19 19:13:29 2020  
 Response via : Initial Calibration

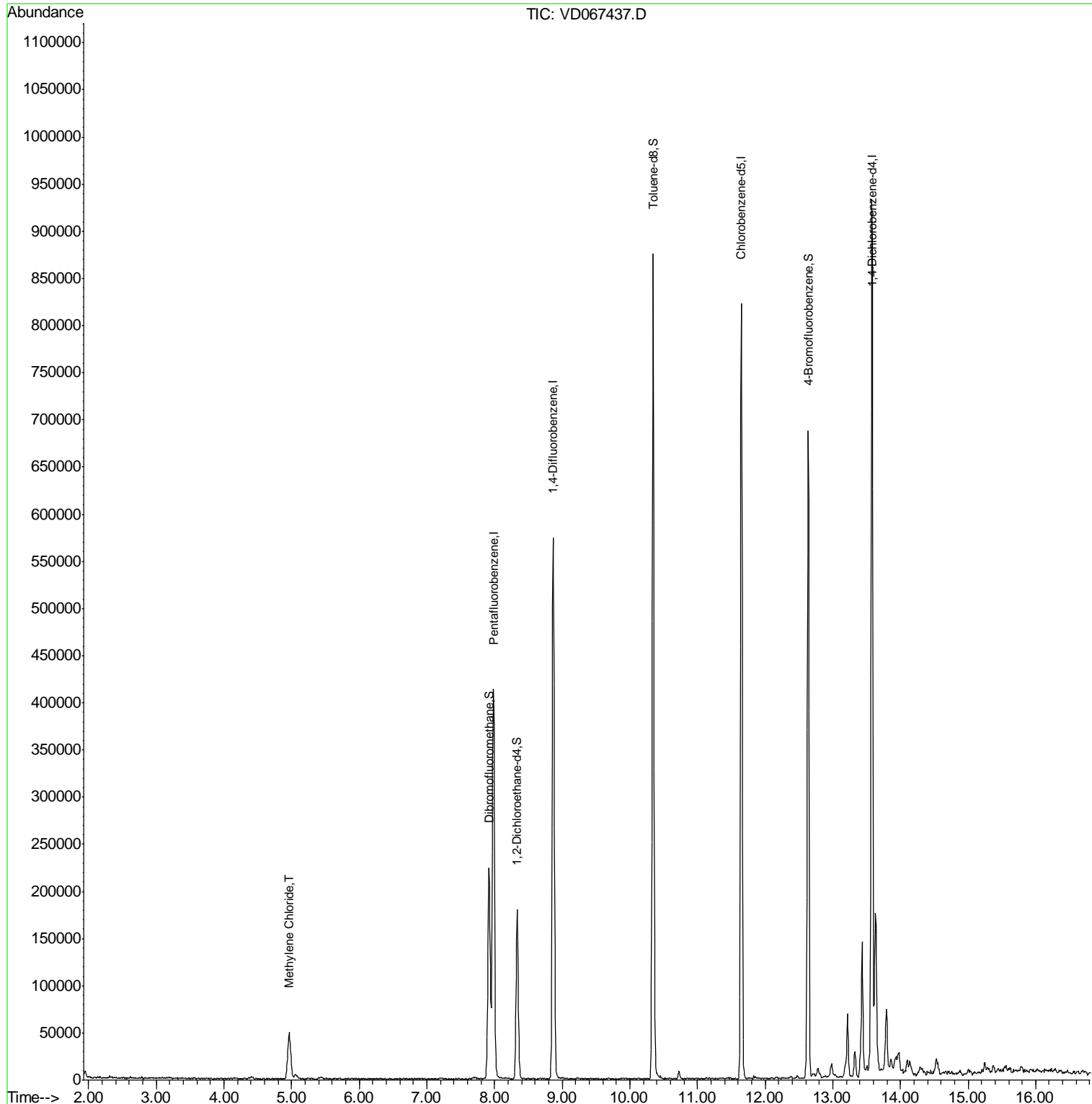
Internal Standards	R.T.	QIon	Response	Conc	Units	Dev(Min)
1) Pentafluorobenzene	7.98	168	320783	50.00	ug/l	0.00
34) 1,4-Difluorobenzene	8.87	114	515630	50.00	ug/l	0.00
63) Chlorobenzene-d5	11.65	117	499136	50.00	ug/l	0.00
72) 1,4-Dichlorobenzene-d4	13.58	152	258217	50.00	ug/l	0.00
System Monitoring Compounds						
33) 1,2-Dichloroethane-d4	8.33	65	152389	47.42	ug/l	0.00
Spiked Amount	50.000		Recovery	=	94.84%	
35) Dibromofluoromethane	7.91	113	165142	48.12	ug/l	0.00
Spiked Amount	50.000		Recovery	=	96.24%	
50) Toluene-d8	10.34	98	603159	48.57	ug/l	0.00
Spiked Amount	50.000		Recovery	=	97.14%	
62) 4-Bromofluorobenzene	12.64	95	218618	50.63	ug/l	0.00
Spiked Amount	50.000		Recovery	=	101.26%	
Target Compounds						Qvalue
20) Methylene Chloride	4.96	84	40985	10.687	ug/l	98

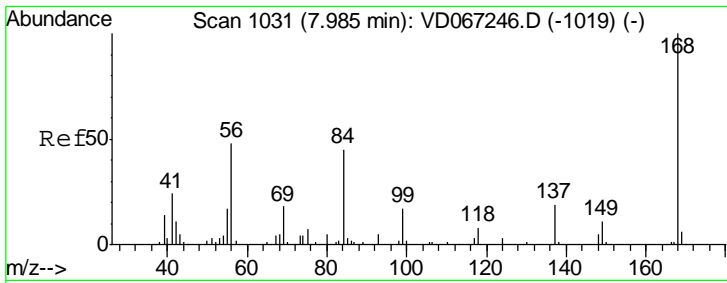
(#) = qualifier out of range (m) = manual integration (+) = signals summed

Data Path : Z:\VOASRV\HPCHEM1\MSVOA D\DATA\VD102820\  
 Data File : VD067437.D  
 Acq On : 28 Oct 2020 16:56  
 Operator : VA/SY  
 Sample : L4547-02  
 Misc : 8.03G/5.00ml/MSVOA D/SOIL  
 ALS Vial : 13 Sample Multiplier: 1

Instrument :  
 MSVOA\_D  
 Client Sampled :  
 TT-033-IDWSO-20201027

Quant Time: Oct 29 01:17:50 2020  
 Quant Method : Z:\VOASRV\HPCHEM1\MSVOA\_D\METHOD\82D101320S.M  
 Quant Title : SW846 8260  
 QLast Update : Mon Oct 19 19:13:29 2020  
 Response via : Initial Calibration

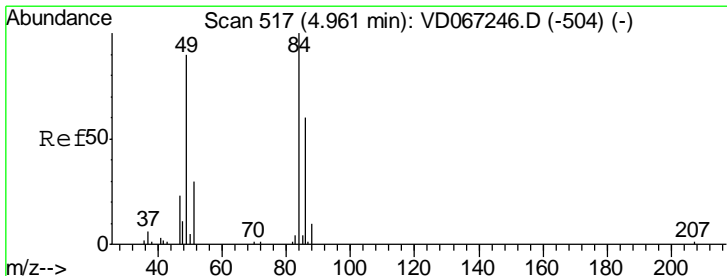
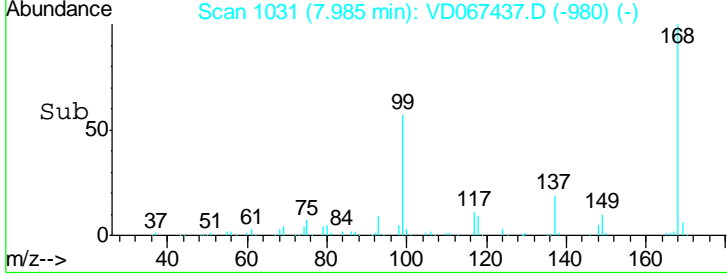
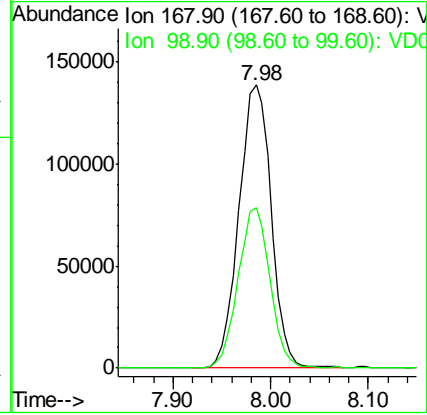
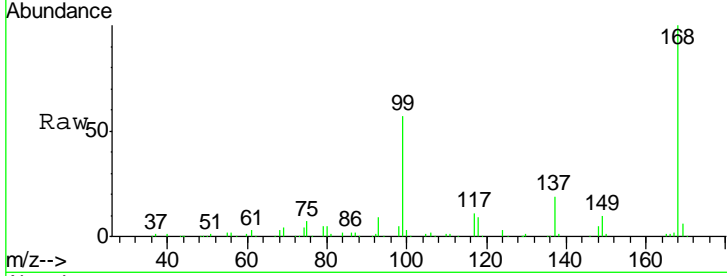




#1  
 Pentafluorobenzene  
 Concen: 50.000 ug/l  
 RT: 7.98 min Scan# 1031  
 Delta R.T. 0.00 min  
 Lab File: VD067437.D  
 Acq: 28 Oct 2020 16:56

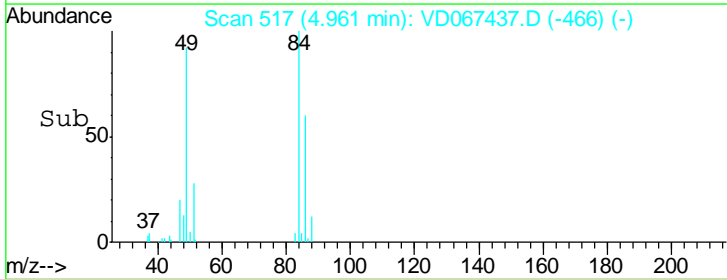
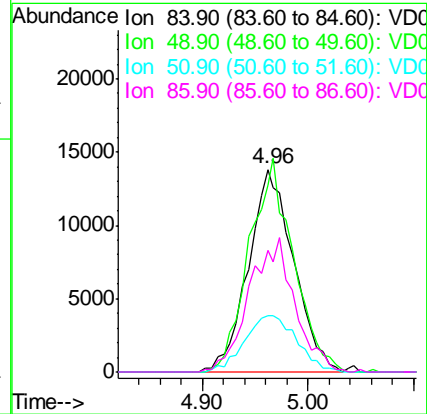
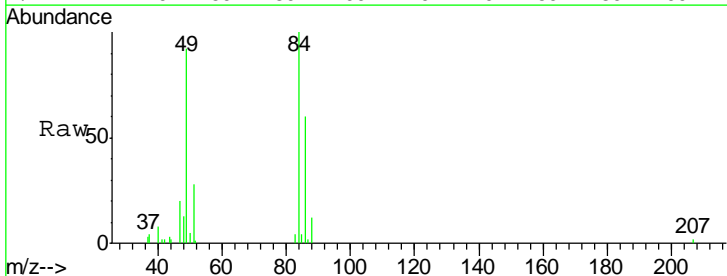
Instrument : MSVOA\_D  
 ClientSampleId : TT-033-IDWSO-20201027

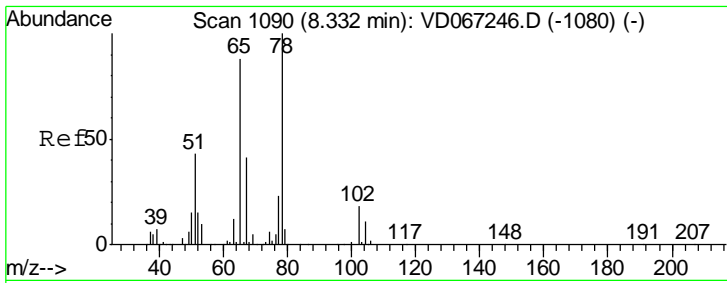
Tgt Ion	Resp	Lower	Upper
168	100		
99	56.6	45.9	68.9



#20  
 Methylene Chloride  
 Concen: 10.687 ug/l  
 RT: 4.96 min Scan# 517  
 Delta R.T. 0.00 min  
 Lab File: VD067437.D  
 Acq: 28 Oct 2020 16:56

Tgt Ion	Resp	Lower	Upper
84	100		
49	92.0	72.2	108.2
51	27.9	23.8	35.8
86	59.9	48.2	72.4

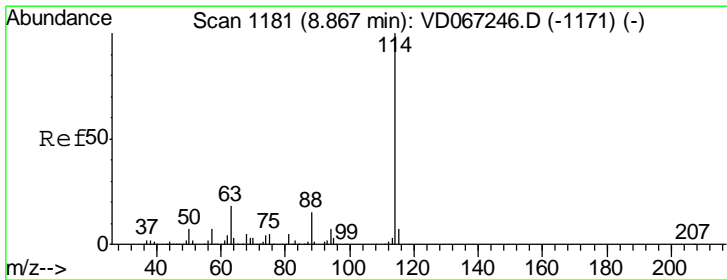
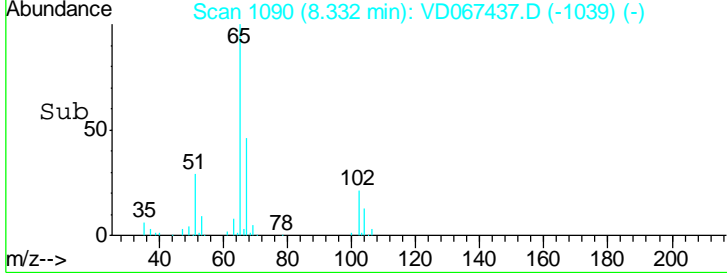
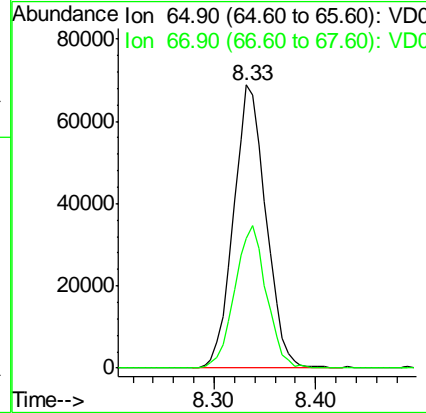
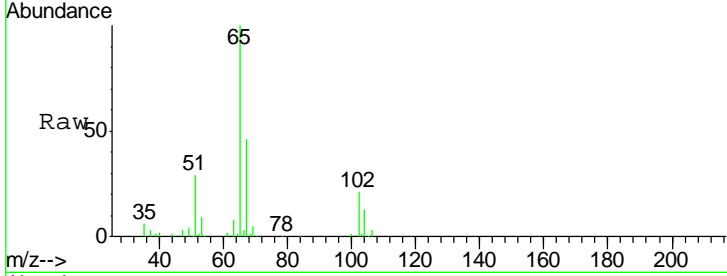




#33  
 1,2-Dichloroethane-d4  
 Concen: 47.418 ug/l  
 RT: 8.33 min Scan# 1090  
 Delta R.T. 0.00 min  
 Lab File: VD067437.D  
 Acq: 28 Oct 2020 16:56

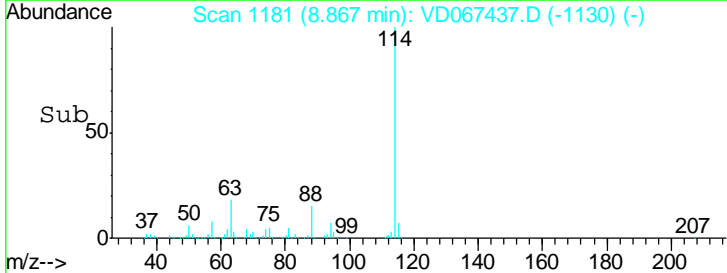
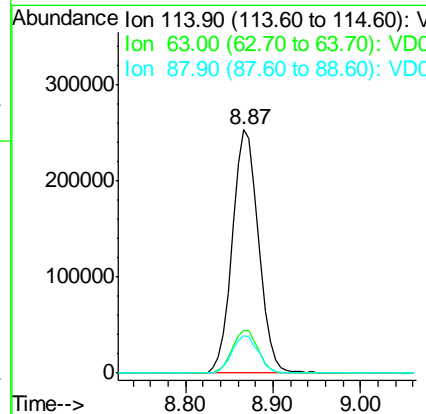
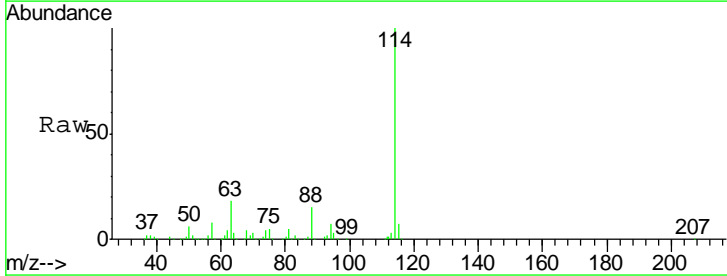
**Instrument :**  
 MSVOA\_D  
**ClientSampleId :**  
 TT-033-IDWSO-20201027

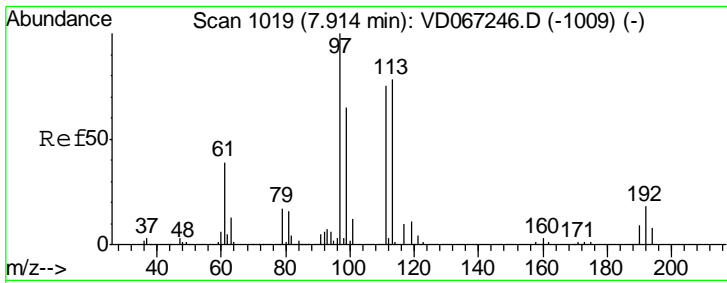
Tgt Ion: 65 Resp: 152389  
 Ion Ratio Lower Upper  
 65 100  
 67 49.1 0.0 103.8



#34  
 1,4-Difluorobenzene  
 Concen: 50.000 ug/l  
 RT: 8.87 min Scan# 1181  
 Delta R.T. 0.00 min  
 Lab File: VD067437.D  
 Acq: 28 Oct 2020 16:56

Tgt Ion: 114 Resp: 515630  
 Ion Ratio Lower Upper  
 114 100  
 63 17.8 0.0 35.0  
 88 15.3 0.0 30.6

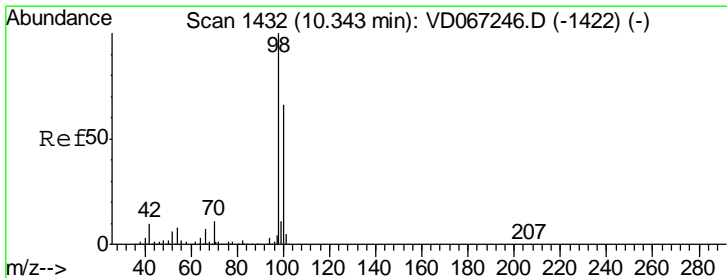
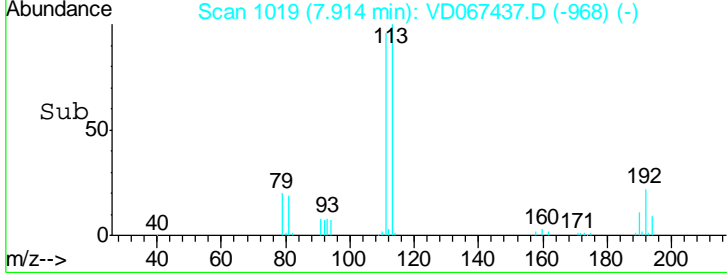
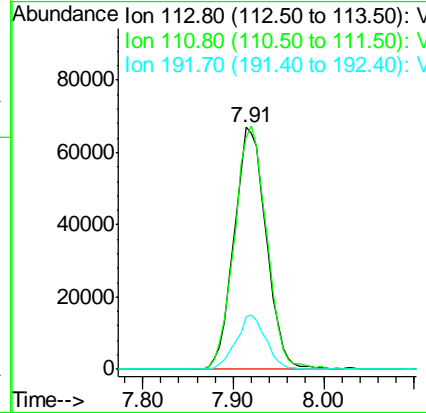
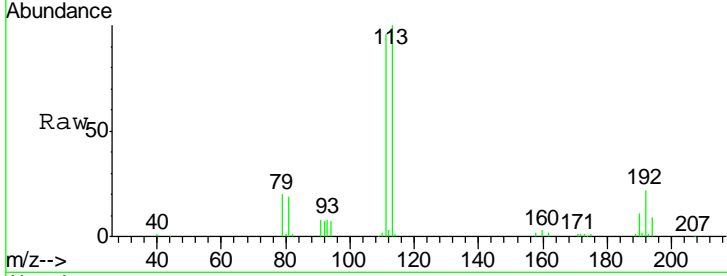




#35  
 Dibromofluoromethane  
 Concen: 48.125 ug/l  
 RT: 7.91 min Scan# 1019  
 Delta R.T. 0.00 min  
 Lab File: VD067437.D  
 Acq: 28 Oct 2020 16:56

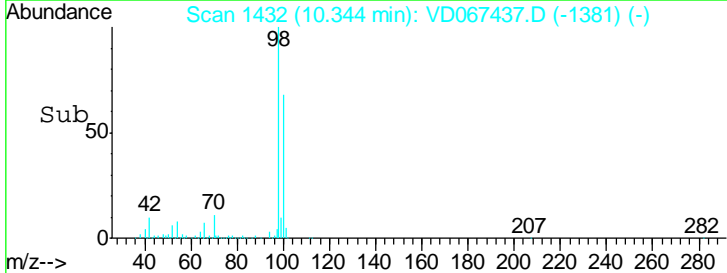
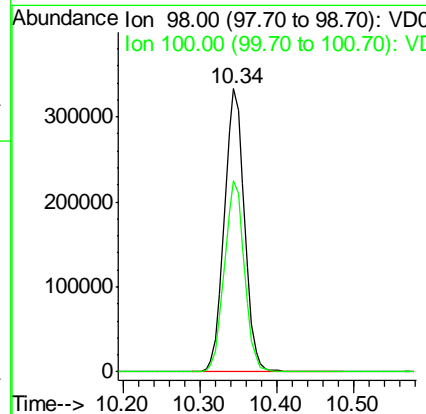
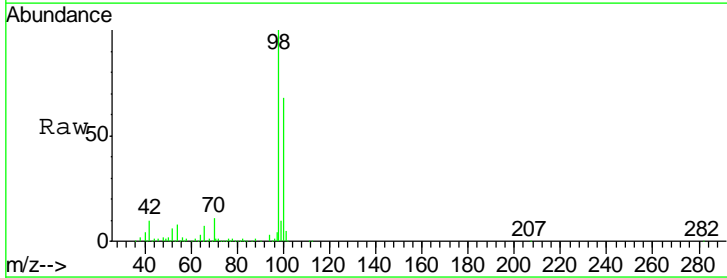
**Instrument :**  
 MSVOA\_D  
**ClientSampled :**  
 TT-033-IDWSO-20201027

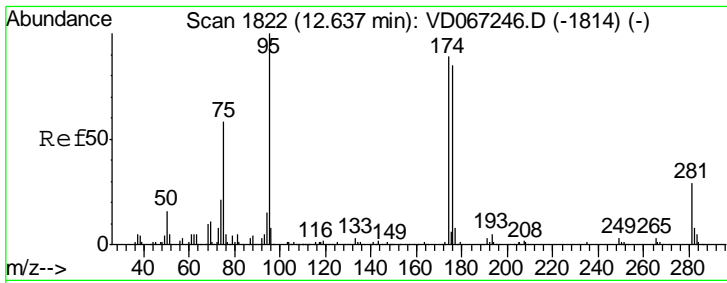
Tgt Ion	Resp	Lower	Upper
113	165142		
111	100.8	81.6	122.4
192	20.9	17.0	25.4



#50  
 Toluene-d8  
 Concen: 48.570 ug/l  
 RT: 10.34 min Scan# 1432  
 Delta R.T. 0.00 min  
 Lab File: VD067437.D  
 Acq: 28 Oct 2020 16:56

Tgt Ion	Resp	Lower	Upper
98	603159		
100	67.1	53.1	79.7

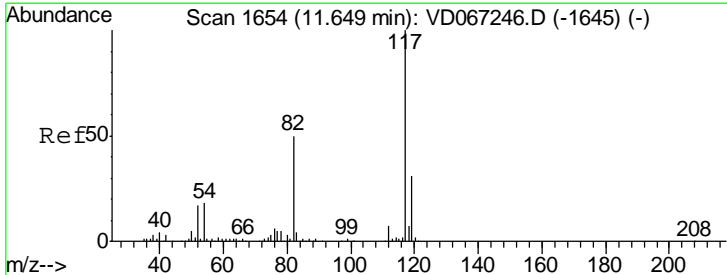
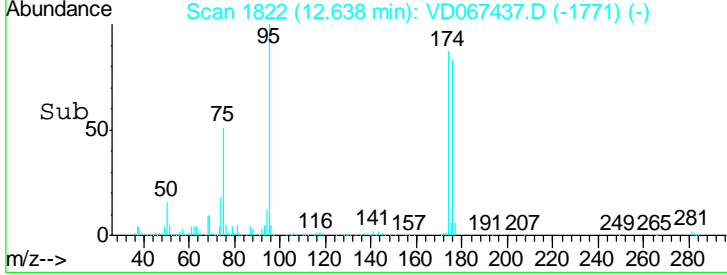
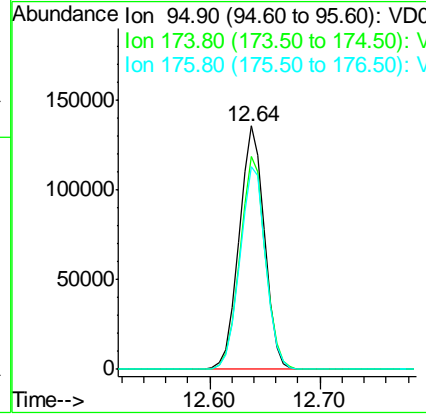
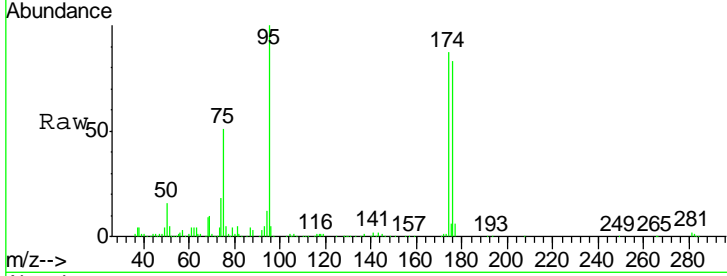




#62  
 4-Bromofluorobenzene  
 Concen: 50.628 ug/l  
 RT: 12.64 min Scan# 1822  
 Delta R.T. 0.00 min  
 Lab File: VD067437.D  
 Acq: 28 Oct 2020 16:56

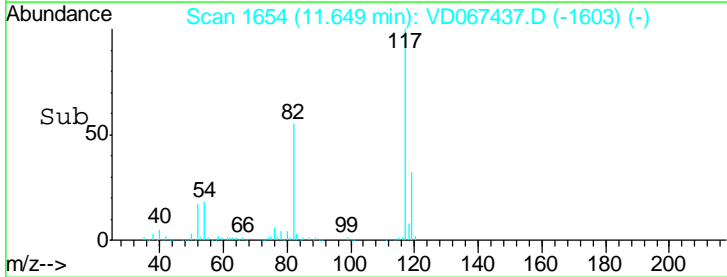
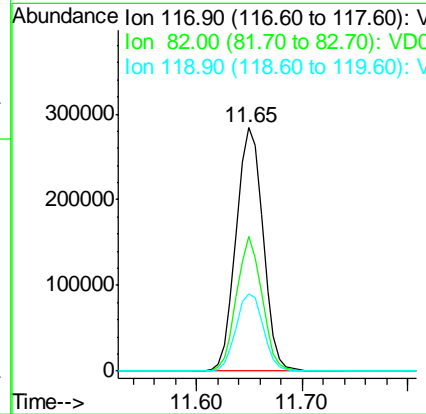
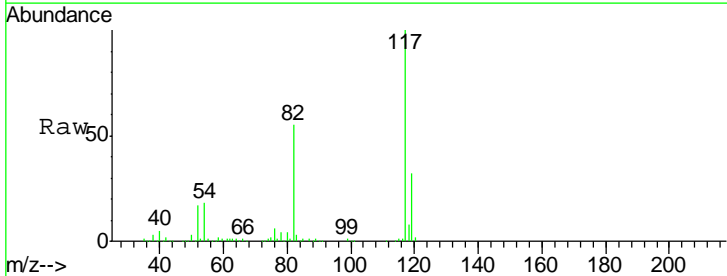
Instrument : MSVOA\_D  
 ClientSampleID : TT-033-IDWSO-20201027

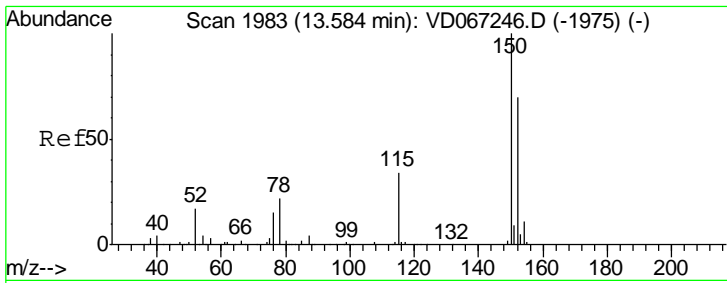
Tgt Ion	Resp	Lower	Upper
95	218618		
174	87.4	0.0	175.2
176	84.4	0.0	168.6



#63  
 Chlorobenzene-d5  
 Concen: 50.000 ug/l  
 RT: 11.65 min Scan# 1654  
 Delta R.T. 0.00 min  
 Lab File: VD067437.D  
 Acq: 28 Oct 2020 16:56

Tgt Ion	Resp	Lower	Upper
117	499136		
82	55.3	39.9	59.9
119	31.5	24.9	37.3





#72  
 1,4-Dichlorobenzene-d4  
 Concen: 50.000 ug/l  
 RT: 13.58 min Scan# 1982  
 Delta R.T. -0.01 min  
 Lab File: VD067437.D  
 Acq: 28 Oct 2020 16:56

Instrument : MSVOA\_D  
 ClientSampleId : TT-033-IDWSO-20201027

Tot Ion	Resp	Lower	Upper
152	100		
115	58.7	29.3	87.9
150	157.1	0.0	339.0

