

Data Path : Z:\VOASRV\HPCHEM1\MSVOA D\DATA\VD102820\
 Data File : VD067438.D
 Acq On : 28 Oct 2020 17:24
 Operator : VA/SY
 Sample : L4529-01
 Misc : 7.33G/5.00ml/MSVOA D/SOIL
 ALS Vial : 14 Sample Multiplier: 1

Instrument :
 MSVOA_D
 ClientSampleId :
 TP-T3

Quant Time: Oct 29 01:19:38 2020
 Quant Method : Z:\VOASRV\HPCHEM1\MSVOA_D\METHOD\82D101320S.M
 Quant Title : SW846 8260
 QLast Update : Mon Oct 19 19:13:29 2020
 Response via : Initial Calibration

Internal Standards	R.T.	QIon	Response	Conc	Units	Dev(Min)
1) Pentafluorobenzene	7.98	168	336761	50.00	ug/l	0.00
34) 1,4-Difluorobenzene	8.87	114	546646	50.00	ug/l	0.00
63) Chlorobenzene-d5	11.65	117	538276	50.00	ug/l	0.00
72) 1,4-Dichlorobenzene-d4	13.58	152	267875	50.00	ug/l	0.00
System Monitoring Compounds						
33) 1,2-Dichloroethane-d4	8.33	65	171259	50.76	ug/l	0.00
Spiked Amount	50.000		Recovery	=	101.52%	
35) Dibromofluoromethane	7.92	113	177073	48.67	ug/l	0.00
Spiked Amount	50.000		Recovery	=	97.34%	
50) Toluene-d8	10.34	98	640057	48.62	ug/l	0.00
Spiked Amount	50.000		Recovery	=	97.24%	
62) 4-Bromofluorobenzene	12.64	95	232725	50.84	ug/l	0.00
Spiked Amount	50.000		Recovery	=	101.68%	

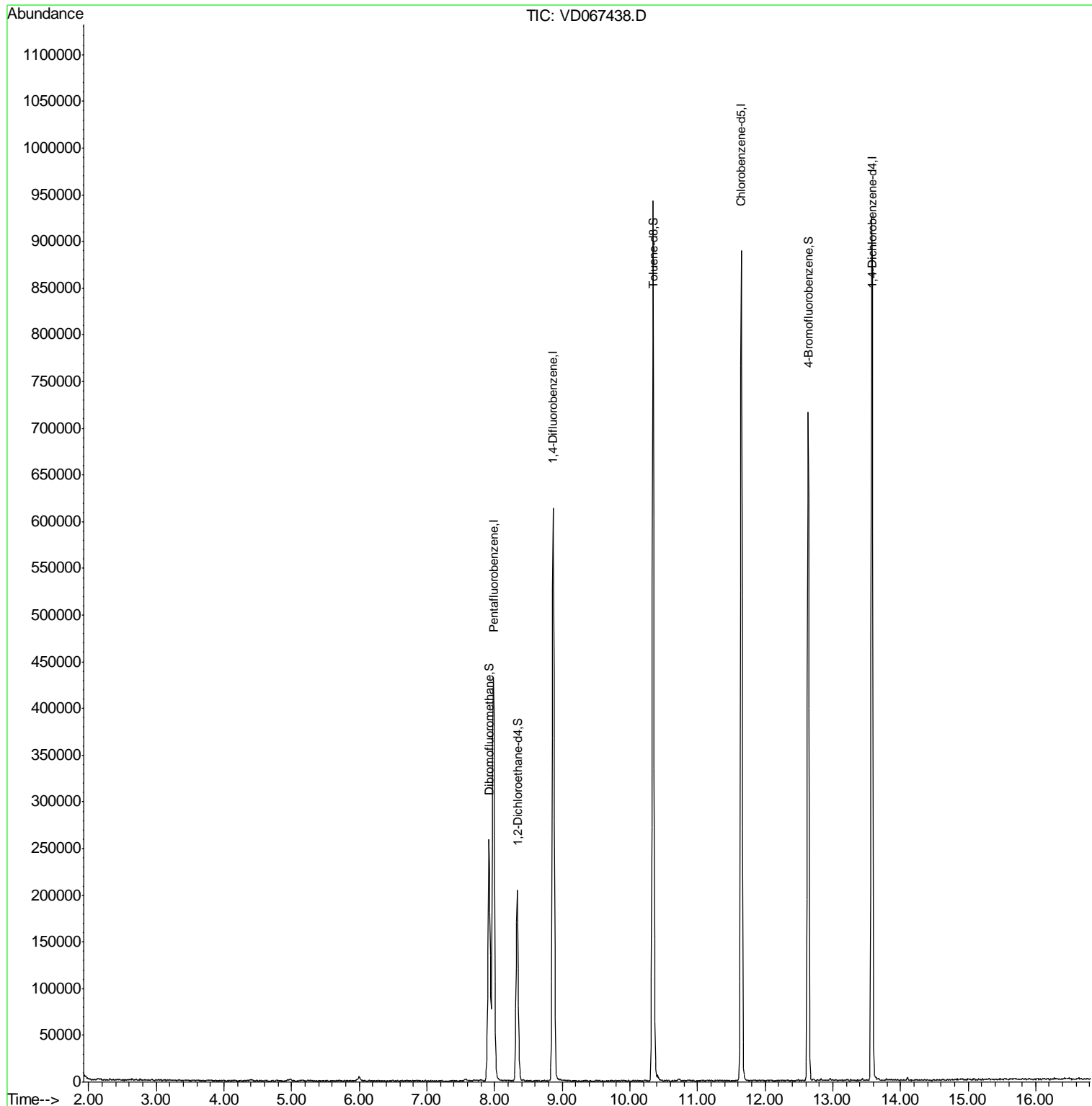
Target Compounds Qvalue

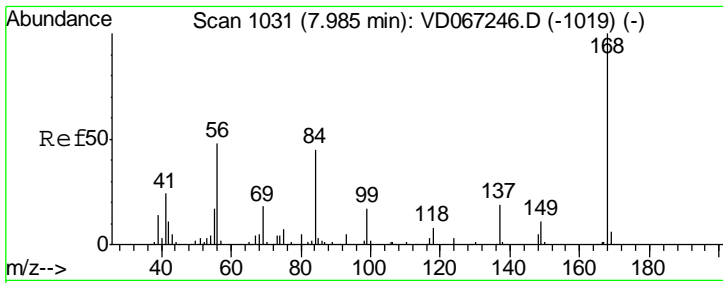
(#) = qualifier out of range (m) = manual integration (+) = signals summed

Data Path : Z:\VOASRV\HPCHEM1\MSVOA D\DATA\VD102820\
 Data File : VD067438.D
 Acq On : 28 Oct 2020 17:24
 Operator : VA/SY
 Sample : L4529-01
 Misc : 7.33G/5.00ml/MSVOA D/SOIL
 ALS Vial : 14 Sample Multiplier: 1

Instrument :
 MSVOA_D
 ClientSampled :
 TP-T3

Quant Time: Oct 29 01:19:38 2020
 Quant Method : Z:\VOASRV\HPCHEM1\MSVOA_D\METHOD\82D101320S.M
 Quant Title : SW846 8260
 QLast Update : Mon Oct 19 19:13:29 2020
 Response via : Initial Calibration

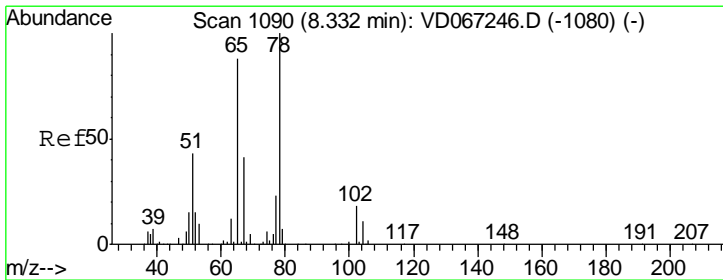
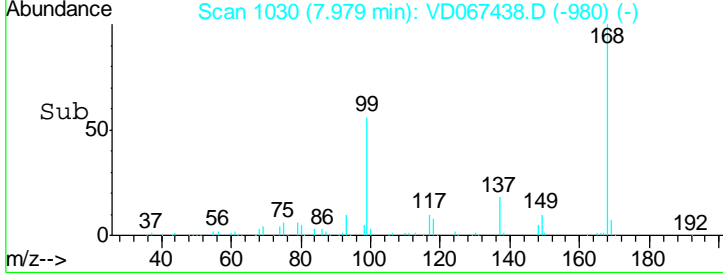
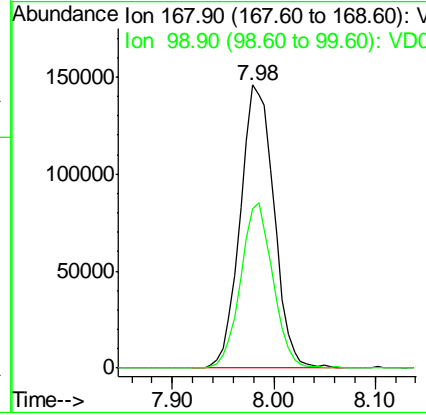
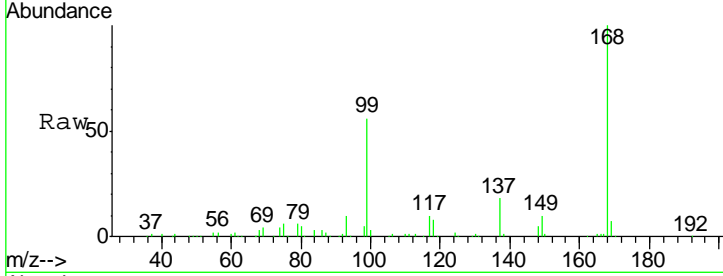




#1
 Pentafluorobenzene
 Concen: 50.000 ug/l
 RT: 7.98 min Scan# 1030
 Delta R.T. -0.01 min
 Lab File: VD067438.D
 Acq: 28 Oct 2020 17:24

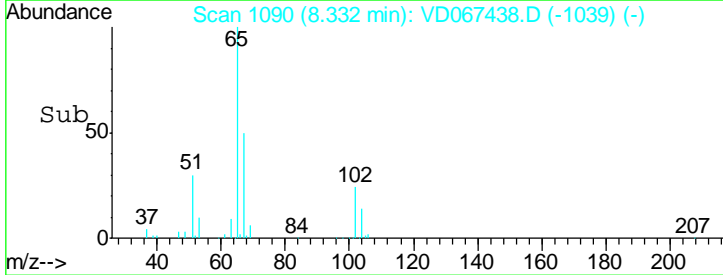
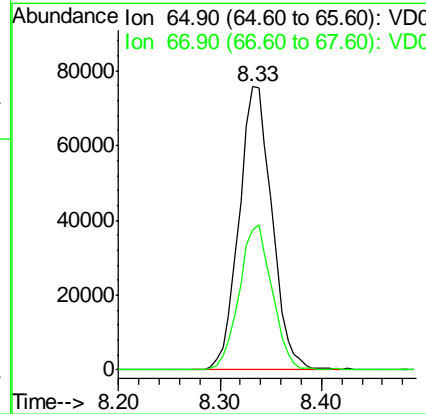
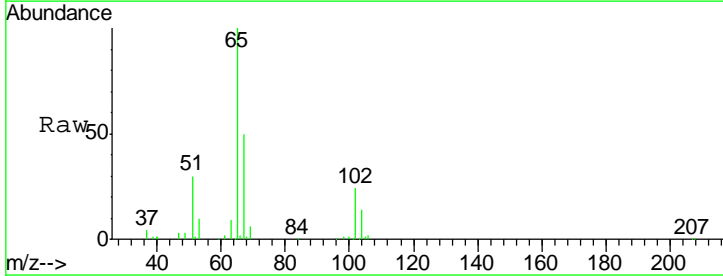
Instrument :
 MSVOA_D
 ClientSampled :
 TP-T3

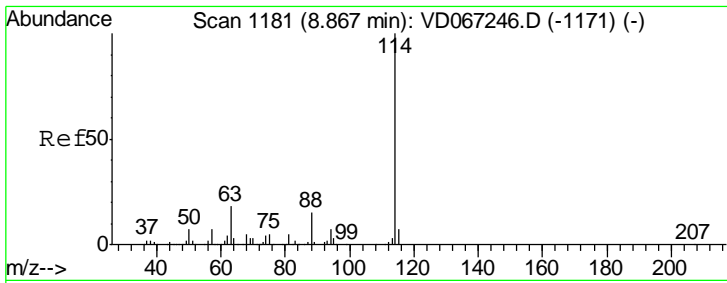
Tgt Ion: 168 Resp: 336761
 Ion Ratio Lower Upper
 168 100
 99 56.2 45.9 68.9



#33
 1,2-Dichloroethane-d4
 Concen: 50.761 ug/l
 RT: 8.33 min Scan# 1090
 Delta R.T. 0.00 min
 Lab File: VD067438.D
 Acq: 28 Oct 2020 17:24

Tgt Ion: 65 Resp: 171259
 Ion Ratio Lower Upper
 65 100
 67 50.9 0.0 103.8

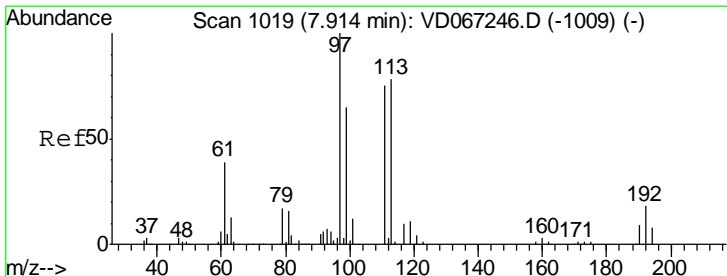
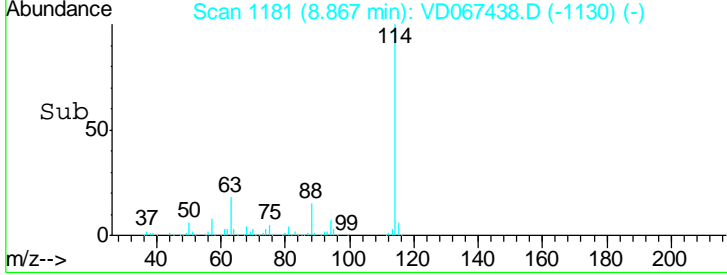
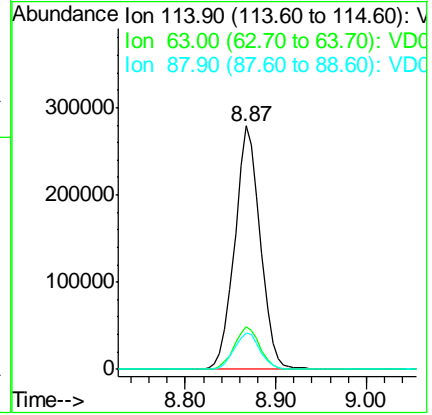
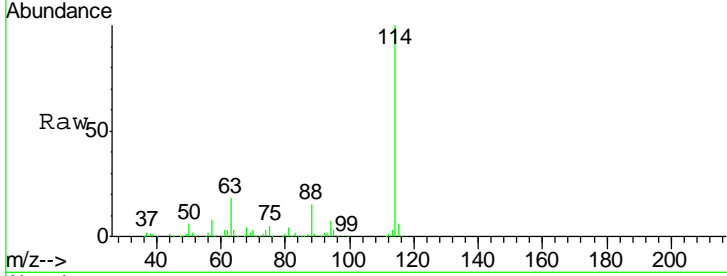




#34
 1,4-Difluorobenzene
 Concen: 50.000 ug/l
 RT: 8.87 min Scan# 1181
 Delta R.T. 0.00 min
 Lab File: VD067438.D
 Acq: 28 Oct 2020 17:24

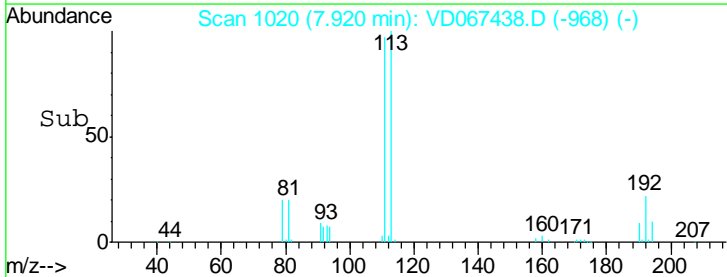
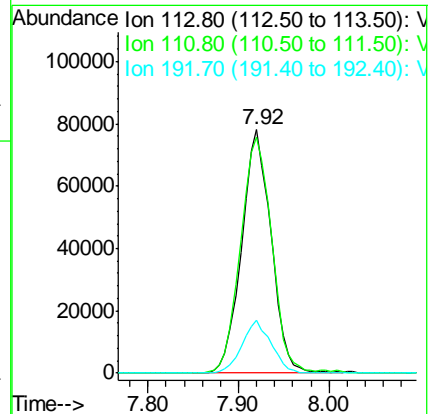
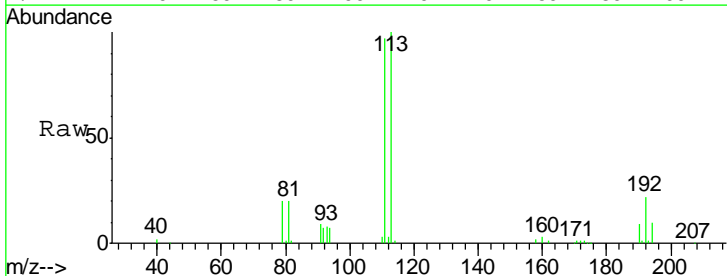
Instrument :
 MSVOA_D
 ClientSampled :
 TP-T3

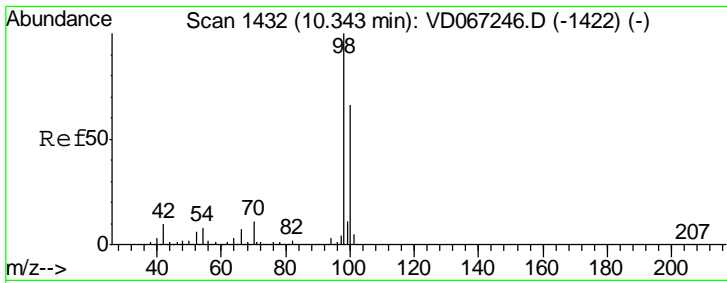
Tgt Ion	Resp	Lower	Upper
114	100		
63	17.6	0.0	35.0
88	14.9	0.0	30.6



#35
 Dibromofluoromethane
 Concen: 48.674 ug/l
 RT: 7.92 min Scan# 1020
 Delta R.T. 0.01 min
 Lab File: VD067438.D
 Acq: 28 Oct 2020 17:24

Tgt Ion	Resp	Lower	Upper
113	100		
111	101.9	81.6	122.4
192	21.5	17.0	25.4

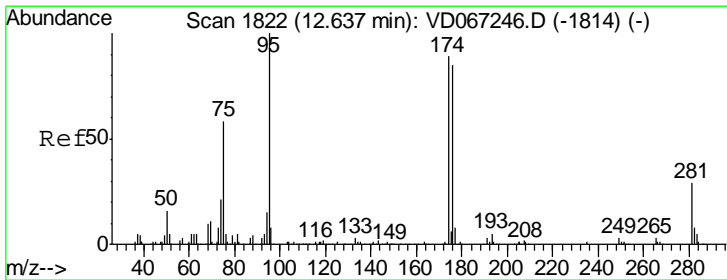
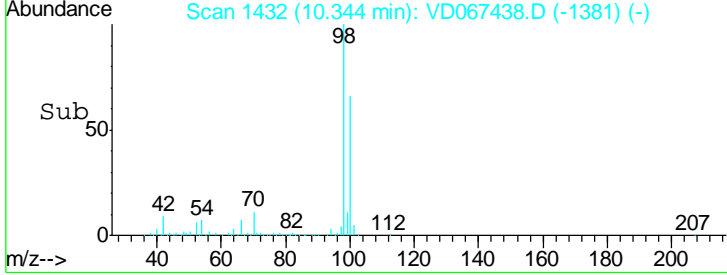
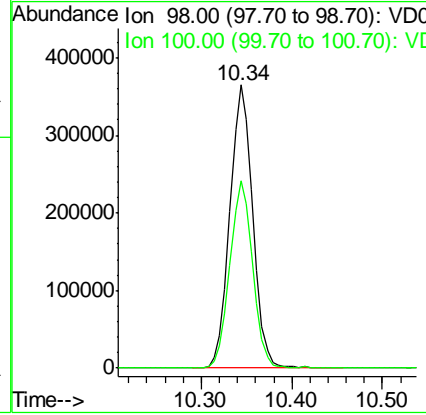
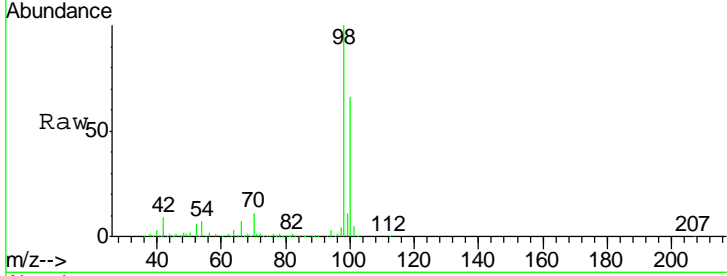




#50
 Toluene-d8
 Concen: 48.617 ug/l
 RT: 10.34 min Scan# 1432
 Delta R.T. 0.00 min
 Lab File: VD067438.D
 Acq: 28 Oct 2020 17:24

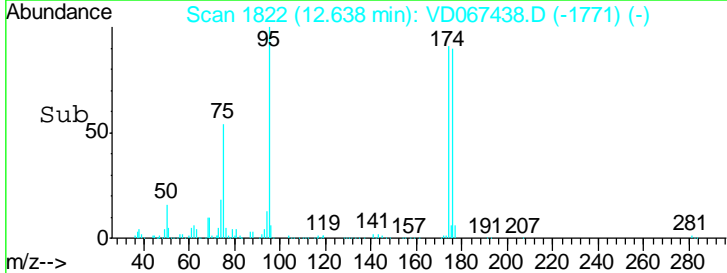
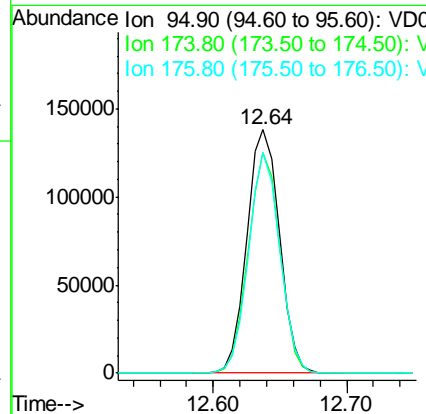
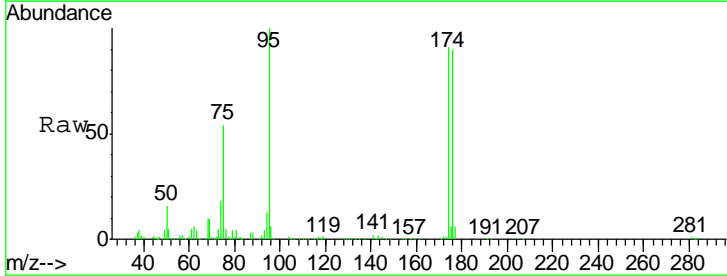
Instrument : MSVOA_D
 ClientSampled : TP-T3

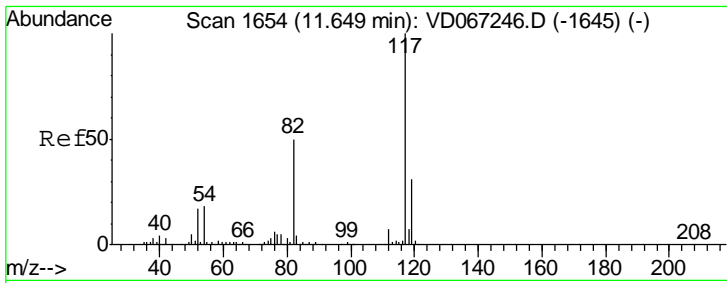
Tgt Ion	Resp	Lower	Upper
98	100		
100	65.9	53.1	79.7



#62
 4-Bromofluorobenzene
 Concen: 50.837 ug/l
 RT: 12.64 min Scan# 1822
 Delta R.T. 0.00 min
 Lab File: VD067438.D
 Acq: 28 Oct 2020 17:24

Tgt Ion	Resp	Lower	Upper
95	100		
174	87.8	0.0	175.2
176	86.7	0.0	168.6

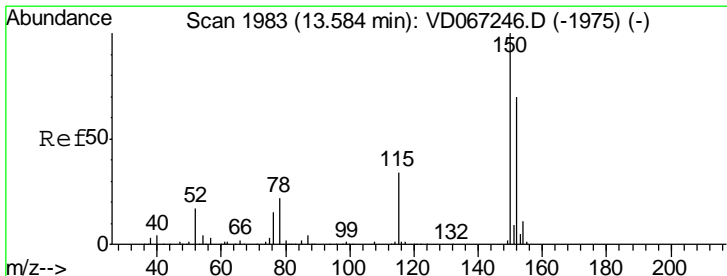
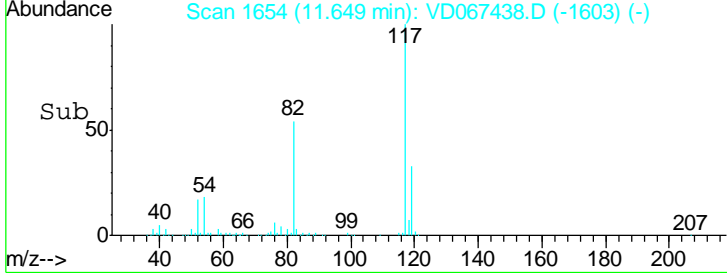
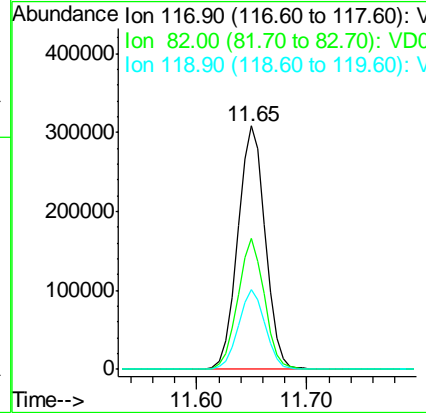
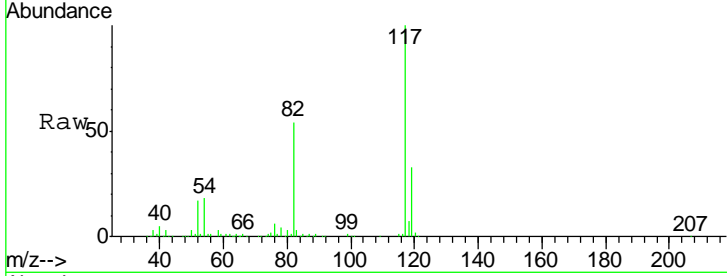




#63
 Chlorobenzene-d5
 Concen: 50.000 ug/l
 RT: 11.65 min Scan# 1654
 Delta R.T. 0.00 min
 Lab File: VD067438.D
 Acq: 28 Oct 2020 17:24

Instrument : MSVOA_D
 ClientSampled : TP-T3

Tgt Ion	Resp	Lower	Upper
117	100		
82	53.6	39.9	59.9
119	32.8	24.9	37.3



#72
 1,4-Dichlorobenzene-d4
 Concen: 50.000 ug/l
 RT: 13.58 min Scan# 1982
 Delta R.T. -0.01 min
 Lab File: VD067438.D
 Acq: 28 Oct 2020 17:24

Tgt Ion	Resp	Lower	Upper
152	100		
115	57.0	29.3	87.9
150	155.0	0.0	339.0

