

Data Path : Z:\voasrv\HPCHEM1\MSVOA D\Data\VD110118\  
 Data File : VD060265.D  
 Acq On : 1 Nov 2018 16:35  
 Operator : VA/AP  
 Sample : J5759-09  
 Misc : 5.87µ/5ml/MSVOA D/SOIL  
 ALS Vial : 8 Sample Multiplier: 1

Instrument :  
 MSVOA\_D  
 ClientSampleId :  
 TP-3

Quant Time: Nov 01 17:42:35 2018  
 Quant Method : Z:\VOASRV\HPCHEM1\MSVOA\_D\METHOD\82D100118S.M  
 Quant Title : SW846 8260  
 QLast Update : Tue Oct 02 06:56:35 2018  
 Response via : Initial Calibration

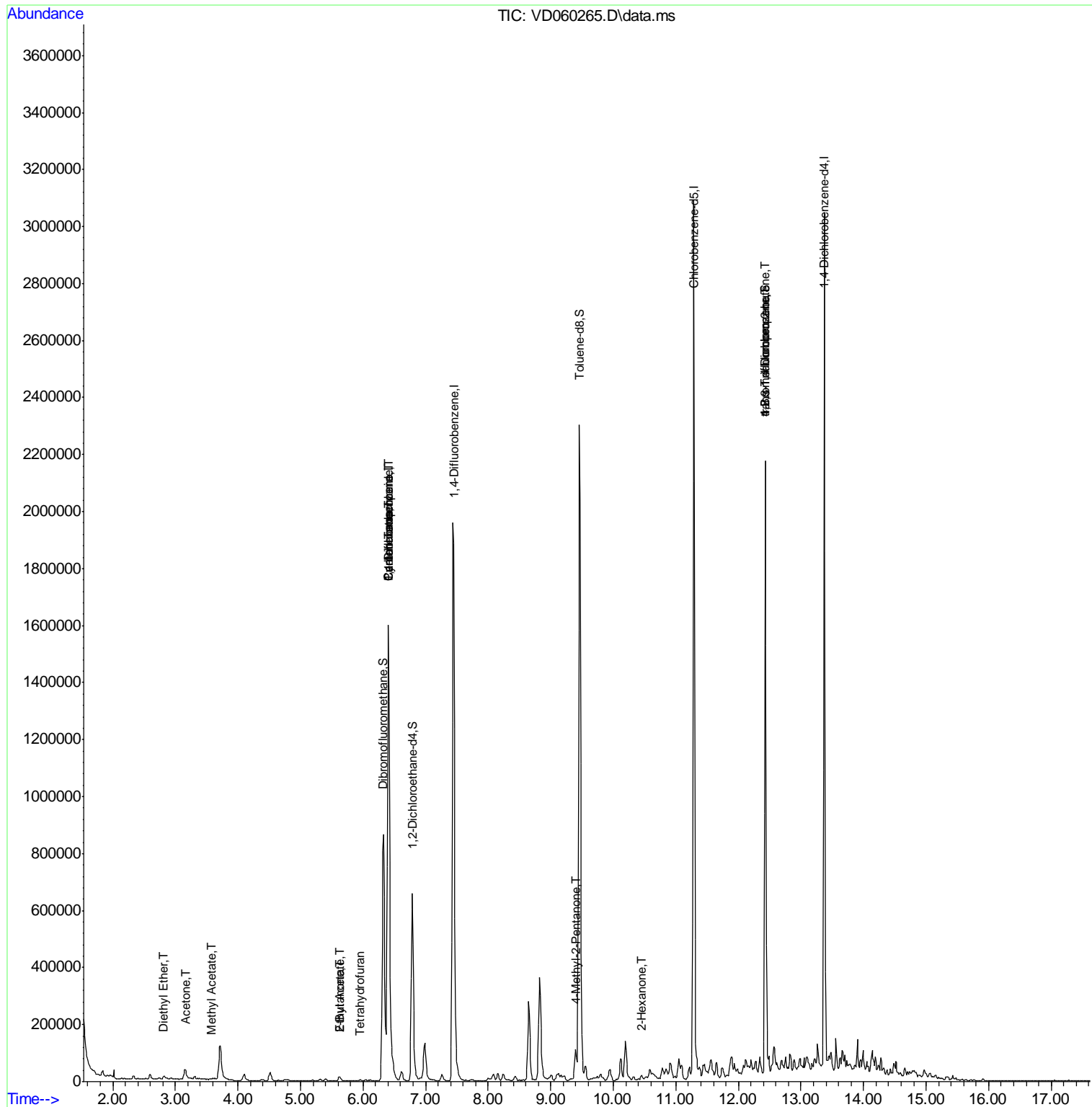
Compound	R.T.	QIon	Response	Conc	Units	Dev(Min)	
-----							
Internal Standards							
1) Pentafluorobenzene	6.406	168	1539599	50.00	µg/l	0.02	
34) 1,4-Difluorobenzene	7.449	114	2105203	50.00	µg/l	0.03	
63) Chlorobenzene-d5	11.287	117	1615012	50.00	µg/l	0.02	
72) 1,4-Dichlorobenzene-d4	13.373	152	671164	50.00	µg/l	0.01	
System Monitoring Compounds							
33) 1,2-Dichloroethane-d4	6.790	65	536967	46.01	µg/l	0.03	
Spiked Amount	50.000						Recovery = 92.02%
35) Dibromofluoromethane	6.327	113	675865	42.28	µg/l	0.03	
Spiked Amount	50.000						Recovery = 84.56%
50) Toluene-d8	9.456	98	1863784	40.89	µg/l	0.02	
Spiked Amount	50.000						Recovery = 81.78%
62) 4-Bromofluorobenzene	12.428	95	600360	35.17	µg/l	0.01	
Spiked Amount	50.000						Recovery = 70.34%
Target Compounds							
							Qvalue
8) Diethyl Ether	2.814	74	3361	1.28	µg/l		85
16) Acetone	3.158	43	73759	34.83	µg/l		95
18) Methyl Acetate	3.581	43	4654	1.02	µg/l #		63
20) Methylene Chloride	3.719	84	64591	Below	Cal		97
25) 2-Butanone	5.628	43	32354	6.12	µg/l		97
29) Tetrahydrofuran	5.953	42	3267	1.06	µg/l #		84
31) Cyclohexane	6.406	56	34942	1.38	µg/l #		1
36) 1,1-Dichloropropene	6.406	75	108252	5.38	µg/l #		45
37) Ethyl Acetate	5.628	43	32354	2.42	µg/l #		71
38) Carbon Tetrachloride	6.406	117	118360	6.48	µg/l #		15
51) 4-Methyl-2-Pentanone	9.397	43	20752	1.87	µg/l #		83
59) 2-Hexanone	10.450	43	12284	1.54	µg/l #		30
76) 1,2,3-Trichloropropane	12.428	75	240173	24.85	µg/l #		45
81) trans-1,4-Dichloro-2-b...	12.428	75	239888	88.33	µg/l #		14
-----							

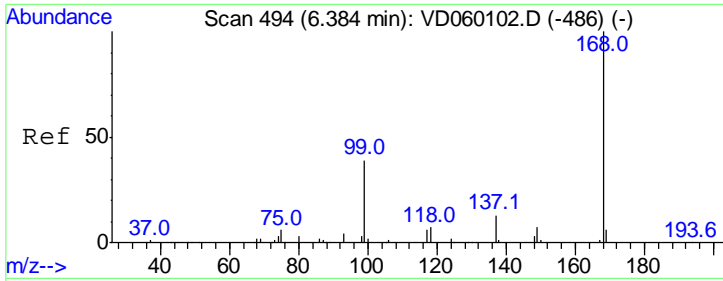
(#) = qualifier out of range (m) = manual integration (+) = signals summed

Data Path : Z:\voasrv\HPCHEM1\MSVOA D\Data\VD110118\  
 Data File : VD060265.D  
 Acq On : 1 Nov 2018 16:35  
 Operator : VA/AP  
 Sample : J5759-09  
 Misc : 5.87µ/5ml/MSVOA D/SOIL  
 ALS Vial : 8 Sample Multiplier: 1

Instrument :  
 MSVOA\_D  
 Client Sampled :  
 TP-3

Quant Time: Nov 01 17:42:35 2018  
 Quant Method : Z:\VOASRV\HPCHEM1\MSVOA\_D\METHOD\82D100118S.M  
 Quant Title : SW846 8260  
 QLast Update : Tue Oct 02 06:56:35 2018  
 Response via : Initial Calibration



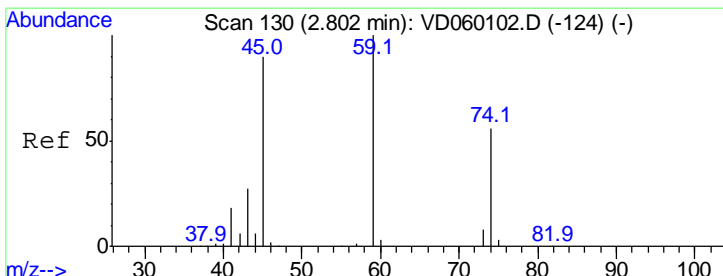
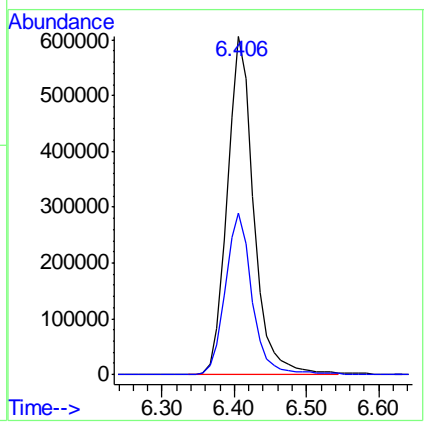
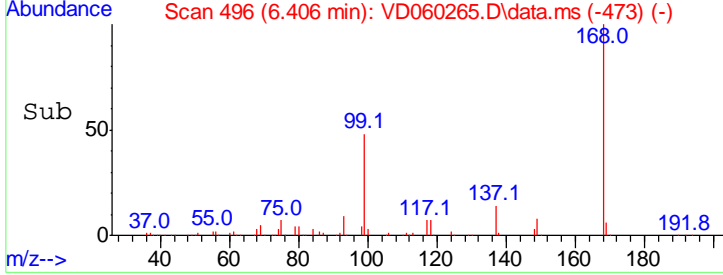
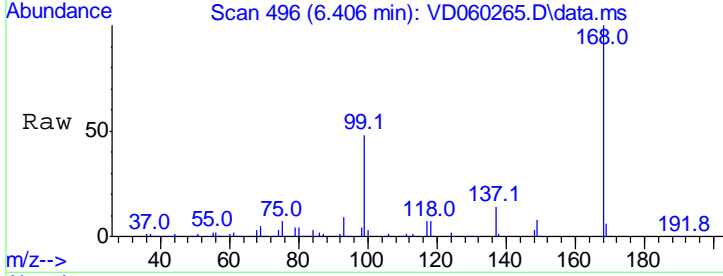


#1  
 Pentafluorobenzene  
 Concen: 50.00 ug/l  
 RT: 6.406 min Scan# 49  
 Delta R.T. 0.021 min  
 Lab File: VD060265.D  
 Acq: 1 Nov 2018 16:35

Instrument : MSVOA\_D  
 ClientSampled : TP-3

Tgt Ion:168 Resp: 1539599

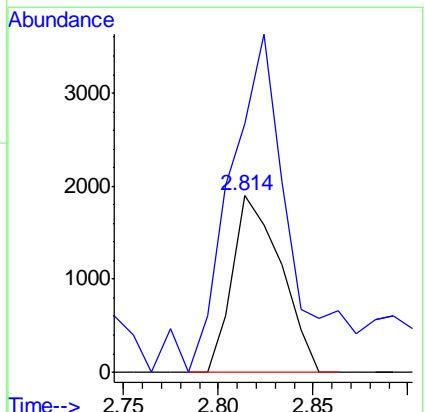
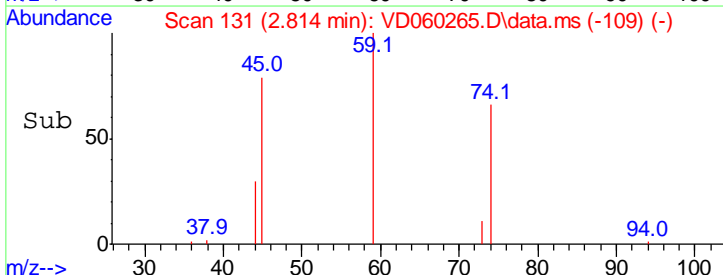
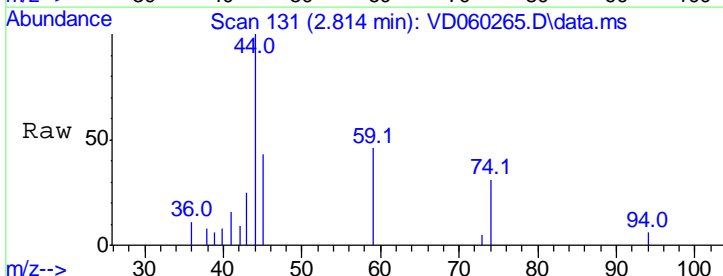
Ion	Ratio	Lower	Upper
168	100		
99	47.8	35.4	53.0

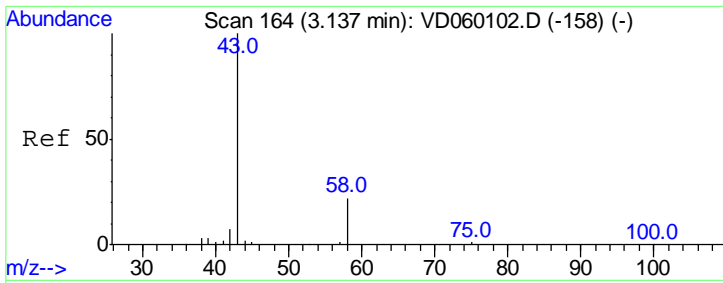


#8  
 Diethyl Ether  
 Concen: 1.28 ug/l  
 RT: 2.814 min Scan# 131  
 Delta R.T. 0.012 min  
 Lab File: VD060265.D  
 Acq: 1 Nov 2018 16:35

Tgt Ion: 74 Resp: 3361

Ion	Ratio	Lower	Upper
74	100		
45	140.5	80.3	241.0

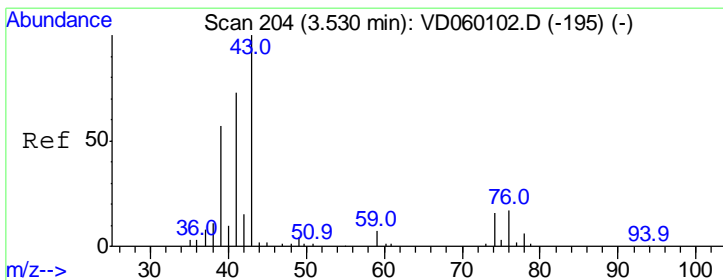
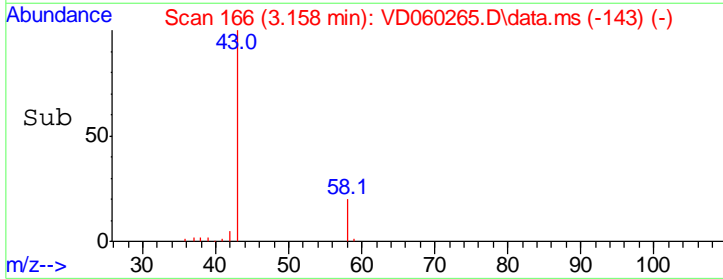
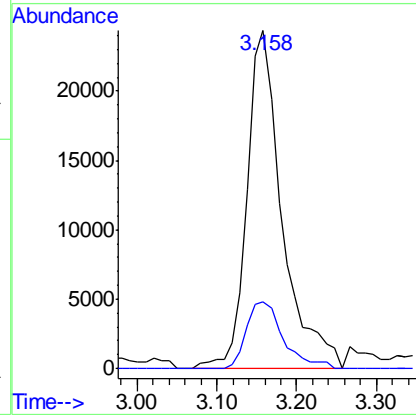
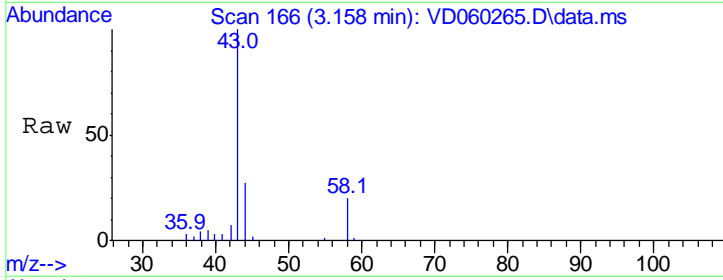




#16  
 Acetone  
 Concen: 34.83 ug/l  
 RT: 3.158 min Scan# 16  
 Delta R.T. 0.021 min  
 Lab File: VD060265.D  
 Acq: 1 Nov 2018 16:35

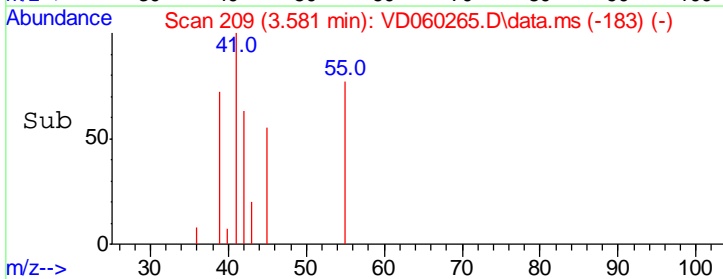
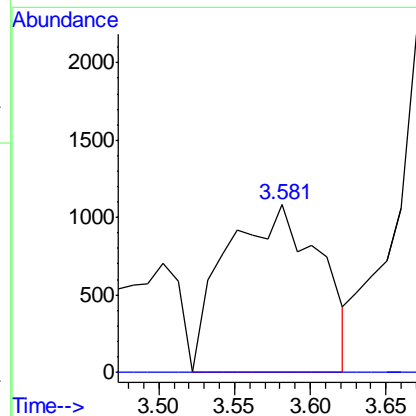
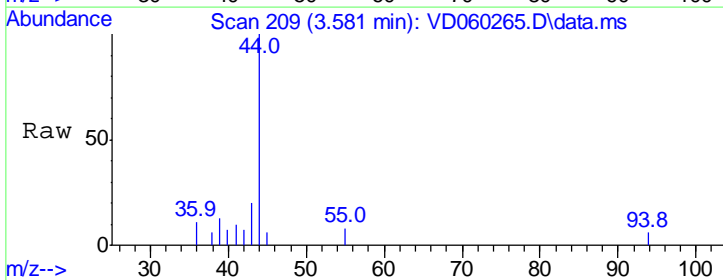
Instrument : MSVOA\_D  
 ClientSampled : TP-3

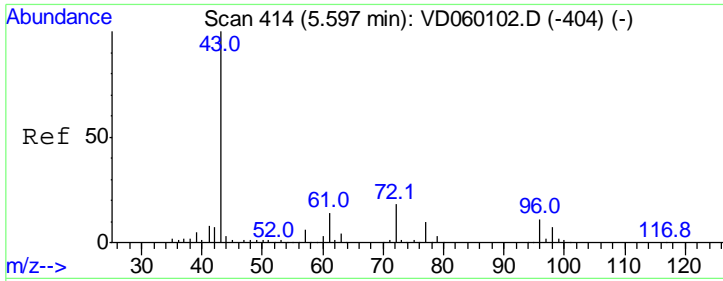
Tgt Ion	Resp	Lower	Upper
43	100		
58	19.6	17.7	26.5



#18  
 Methyl Acetate  
 Concen: 1.02 ug/l  
 RT: 3.581 min Scan# 209  
 Delta R.T. 0.051 min  
 Lab File: VD060265.D  
 Acq: 1 Nov 2018 16:35

Tgt Ion	Resp	Lower	Upper
43	100		
74	0.0	12.6	19.0#



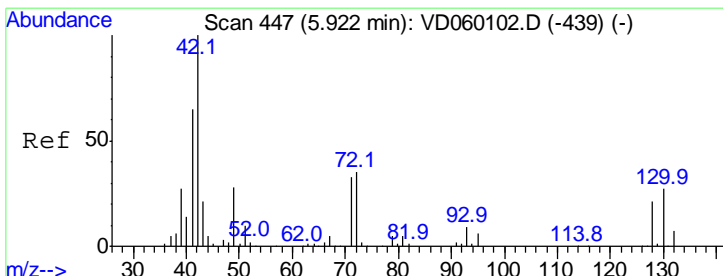
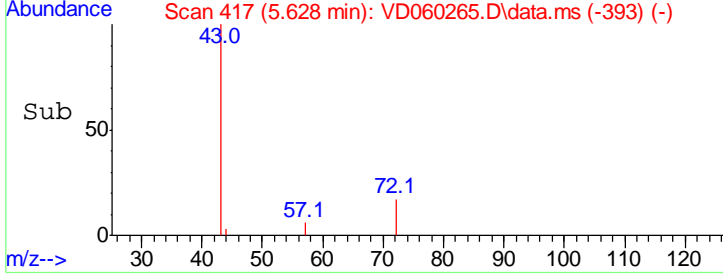
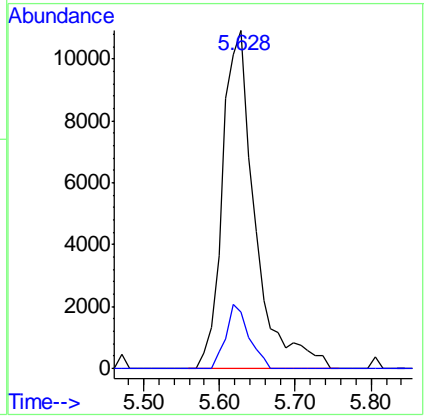
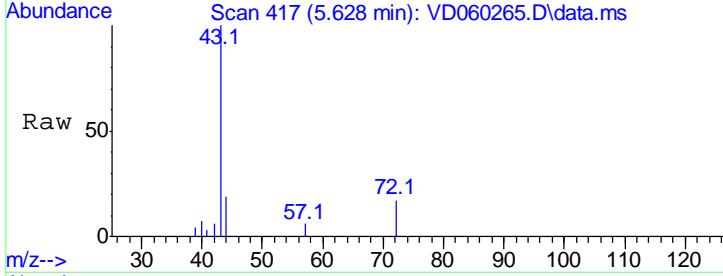


#25  
 2-Butanone  
 Concen: 6.12 ug/l  
 RT: 5.628 min Scan# 41  
 Delta R.T. 0.031 min  
 Lab File: VD060265.D  
 Acq: 1 Nov 2018 16:35

Instrument : MSVOA\_D  
 ClientSampled : TP-3

Tgt Ion: 43 Resp: 32354

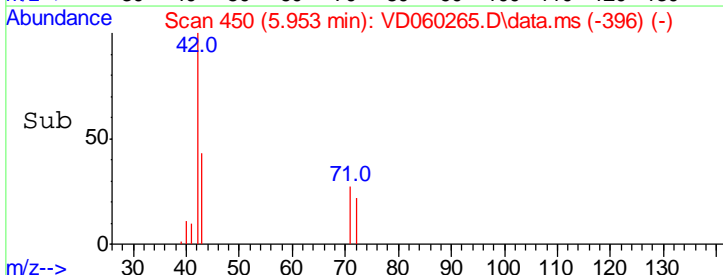
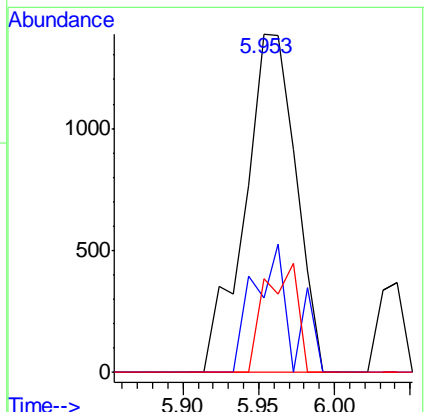
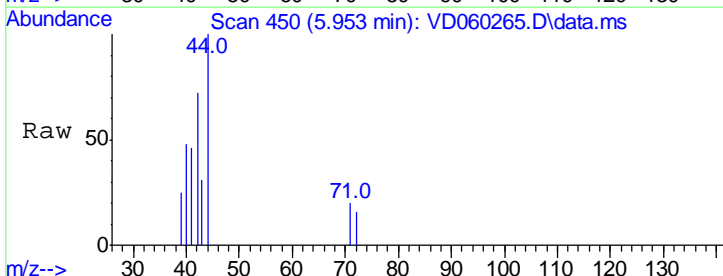
Ion	Ratio	Lower	Upper
43	100		
72	16.6	14.5	21.7

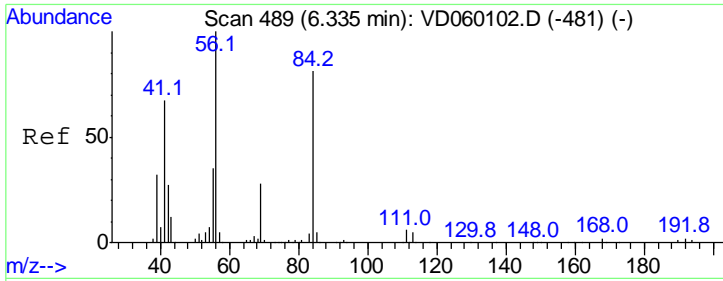


#29  
 Tetrahydrofuran  
 Concen: 1.06 ug/l  
 RT: 5.953 min Scan# 450  
 Delta R.T. 0.031 min  
 Lab File: VD060265.D  
 Acq: 1 Nov 2018 16:35

Tgt Ion: 42 Resp: 3267

Ion	Ratio	Lower	Upper
42	100		
72	28.3	26.9	40.3
71	20.7	26.7	40.1#

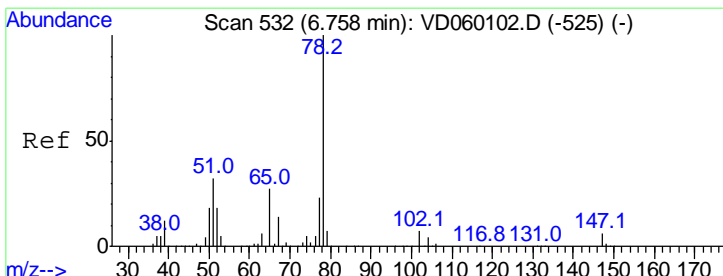
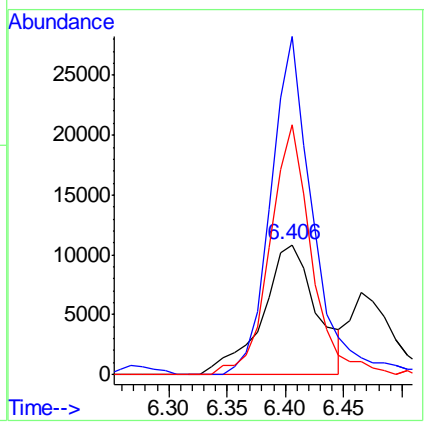
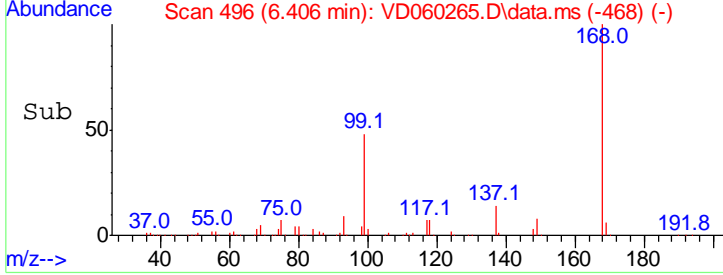
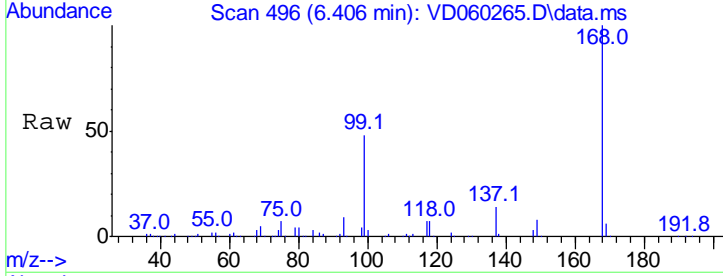




#31  
 Cyclohexane  
 Concen: 1.38 ug/l  
 RT: 6.406 min Scan# 49  
 Delta R.T. 0.071 min  
 Lab File: VD060265.D  
 Acq: 1 Nov 2018 16:35

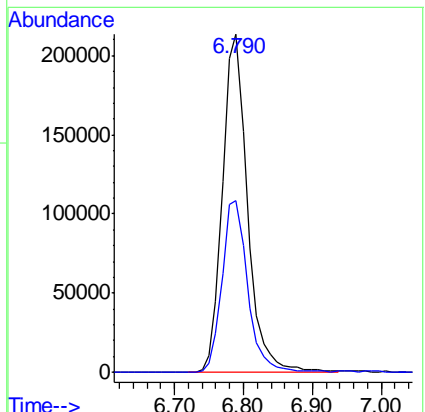
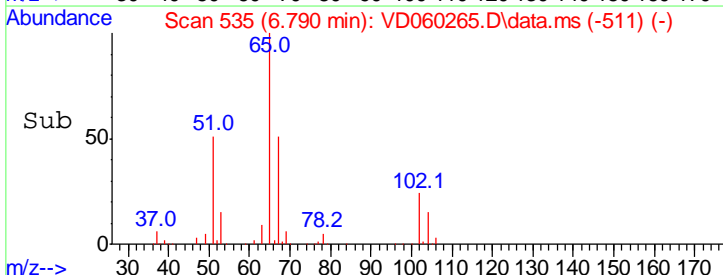
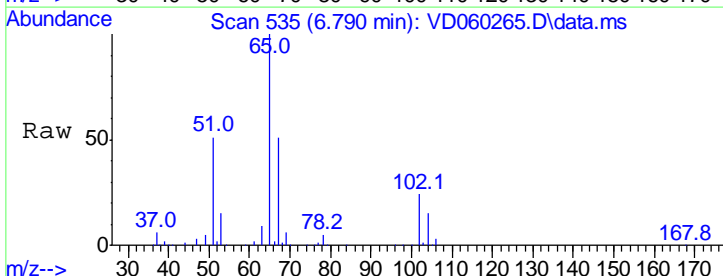
Instrument : MSVOA\_D  
 ClientSampled : TP-3

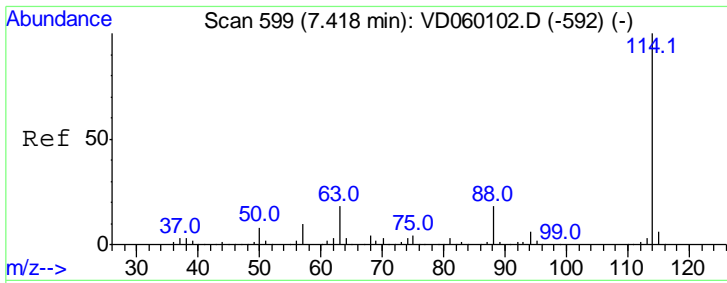
Tgt Ion	Resp	Lower	Upper
56	100		
69	261.2	22.8	34.2#
84	192.9	64.9	97.3#



#33  
 1,2-Dichloroethane-d4  
 Concen: 46.01 ug/l  
 RT: 6.790 min Scan# 535  
 Delta R.T. 0.031 min  
 Lab File: VD060265.D  
 Acq: 1 Nov 2018 16:35

Tgt Ion	Resp	Lower	Upper
65	100		
67	51.0	0.0	106.2



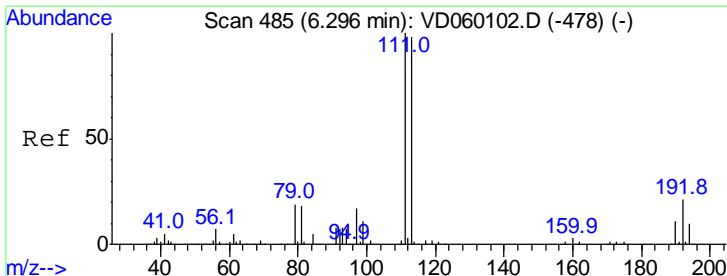
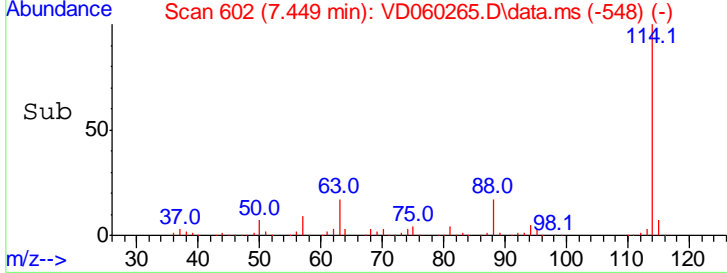
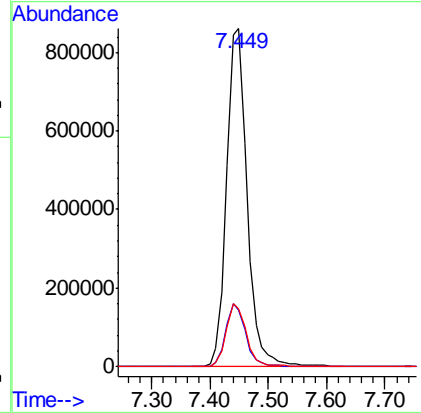
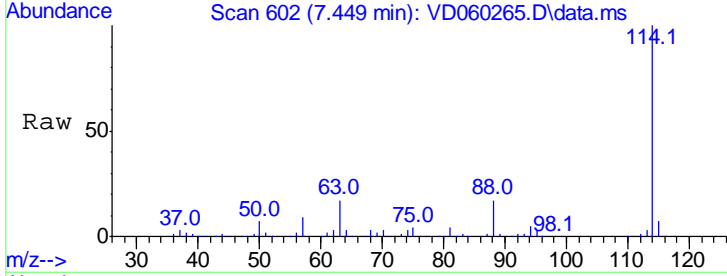


#34  
 1,4-Difluorobenzene  
 Concen: 50.00 ug/l  
 RT: 7.449 min Scan# 60  
 Delta R.T. 0.031 min  
 Lab File: VD060265.D  
 Acq: 1 Nov 2018 16:35

Instrument : MSVOA\_D  
 ClientSampled : TP-3

Tgt Ion:114 Resp: 2105203

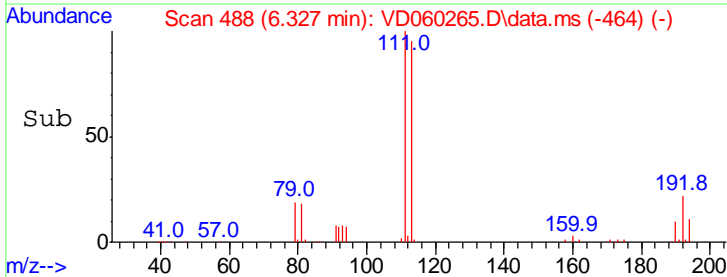
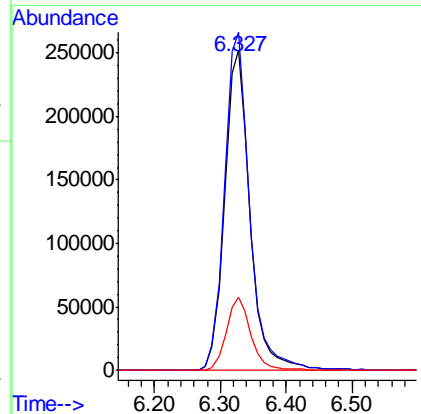
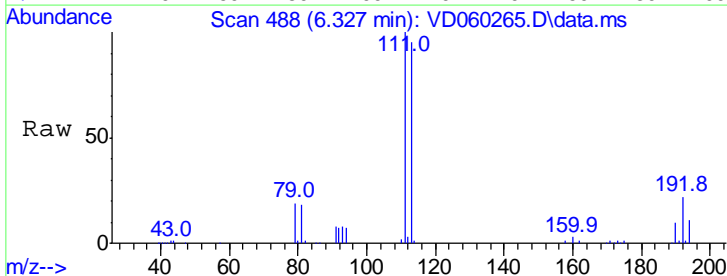
Ion	Ratio	Lower	Upper
114	100		
63	16.9	0.0	36.0
88	17.2	0.0	36.2

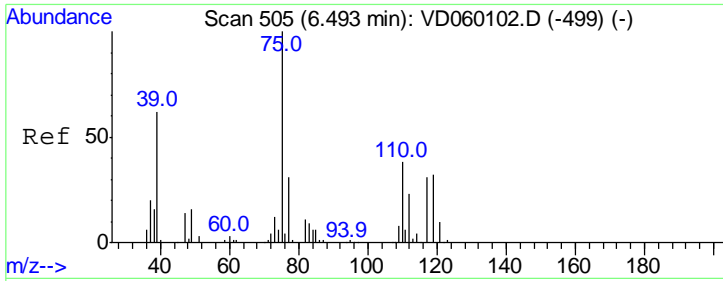


#35  
 Dibromofluoromethane  
 Concen: 42.28 ug/l  
 RT: 6.327 min Scan# 488  
 Delta R.T. 0.031 min  
 Lab File: VD060265.D  
 Acq: 1 Nov 2018 16:35

Tgt Ion:113 Resp: 675865

Ion	Ratio	Lower	Upper
113	100		
111	105.6	81.5	122.3
192	23.0	17.4	26.0

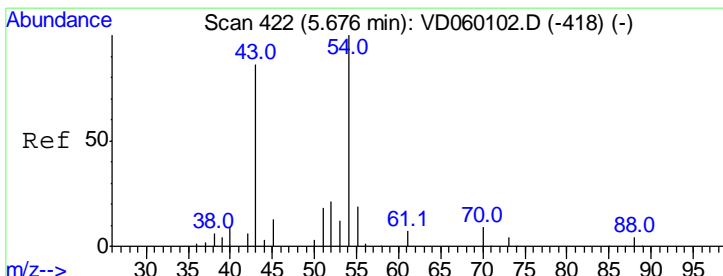
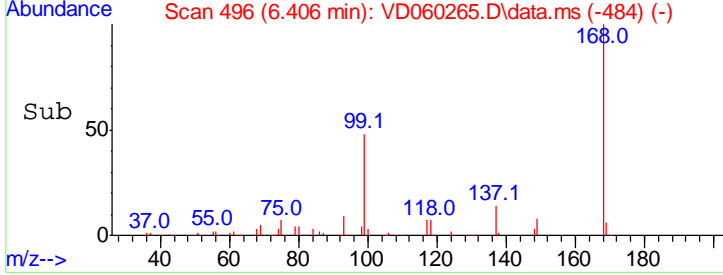
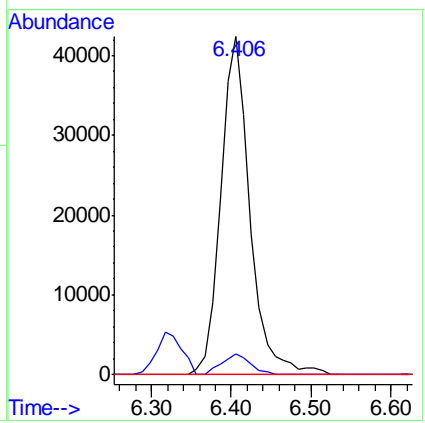
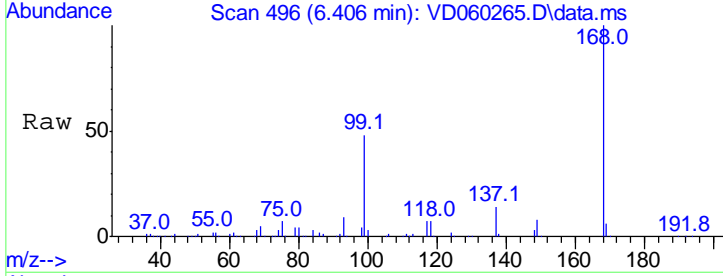




#36  
 1,1-Dichloropropene  
 Concen: 5.38 ug/l  
 RT: 6.406 min Scan# 49  
 Delta R.T. -0.087 min  
 Lab File: VD060265.D  
 Acq: 1 Nov 2018 16:35

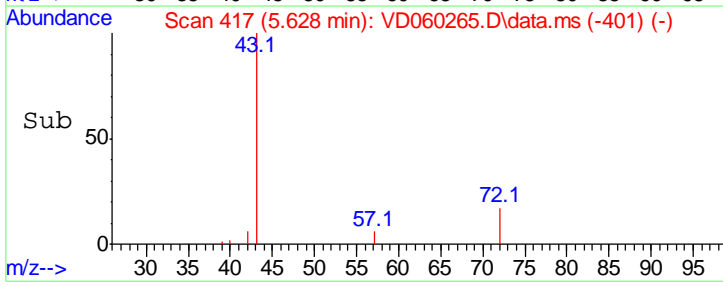
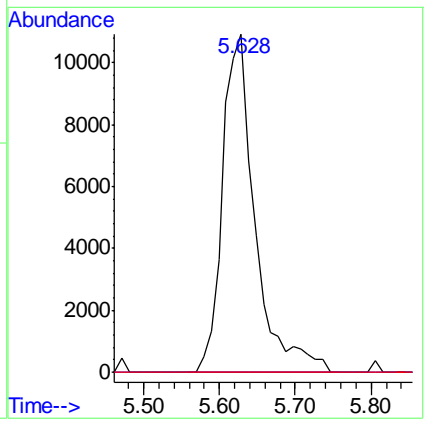
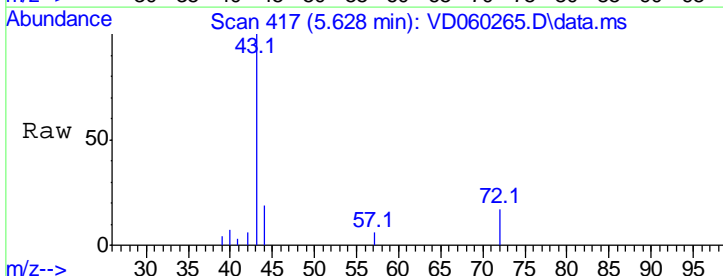
Instrument : MSVOA\_D  
 ClientSampled : TP-3

Tgt Ion	Ratio	Lower	Upper
75	100		
110	6.0	19.0	57.0#
77	0.0	24.9	37.3#

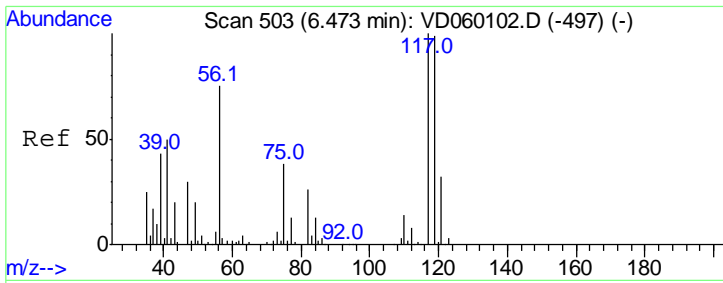


#37  
 Ethyl Acetate  
 Concen: 2.42 ug/l  
 RT: 5.628 min Scan# 417  
 Delta R.T. -0.047 min  
 Lab File: VD060265.D  
 Acq: 1 Nov 2018 16:35

Tgt Ion	Ratio	Lower	Upper
43	100		
61	0.0	10.5	15.7#
70	0.0	6.3	9.5#



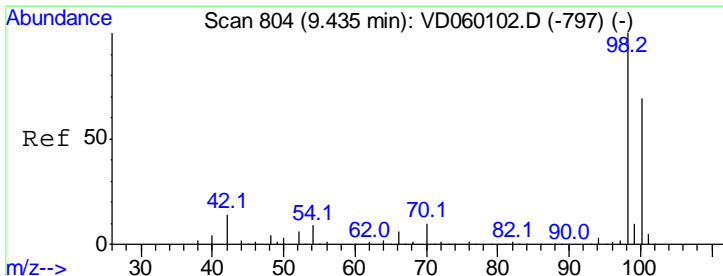
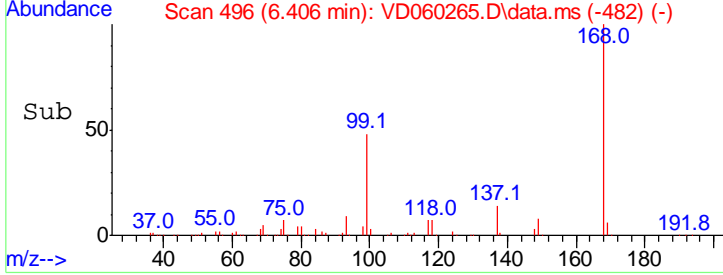
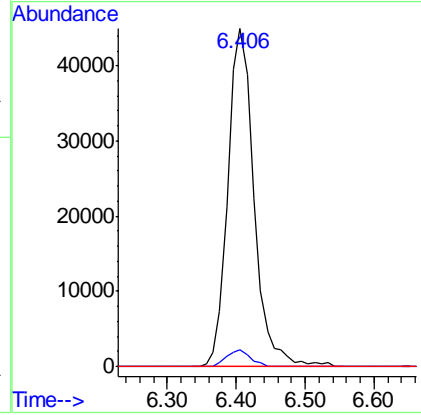
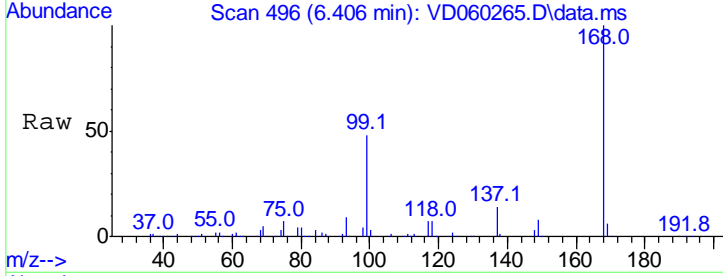




#38  
 Carbon Tetrachloride  
 Concen: 6.48 ug/l  
 RT: 6.406 min Scan# 49  
 Delta R.T. -0.067 min  
 Lab File: VD060265.D  
 Acq: 1 Nov 2018 16:35

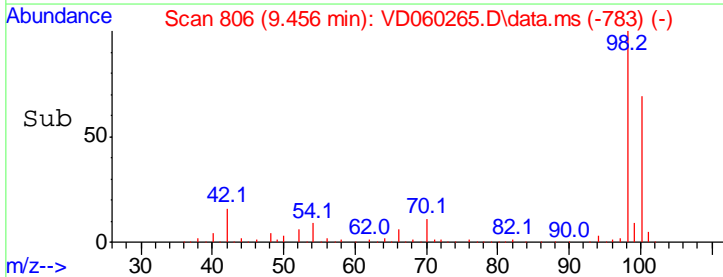
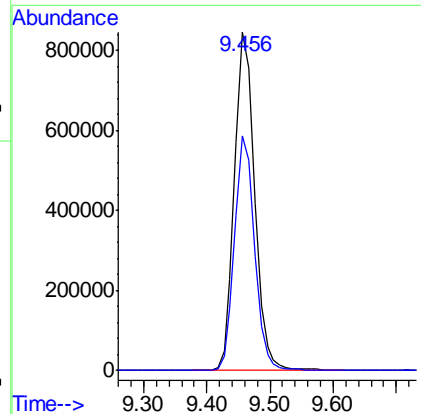
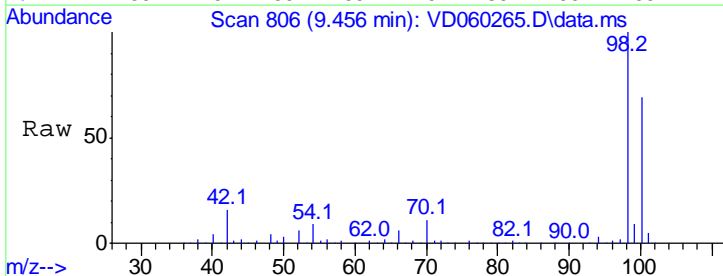
Instrument : MSVOA\_D  
 ClientSampled : TP-3

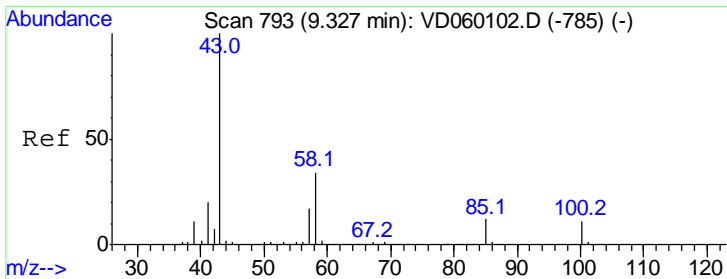
Tgt Ion	Resp	Lower	Upper
117	100		
119	4.8	77.8	116.6#
121	0.0	24.8	37.2#



#50  
 Toluene-d8  
 Concen: 40.89 ug/l  
 RT: 9.456 min Scan# 806  
 Delta R.T. 0.021 min  
 Lab File: VD060265.D  
 Acq: 1 Nov 2018 16:35

Tgt Ion	Resp	Lower	Upper
98	100		
100	69.4	55.4	83.0

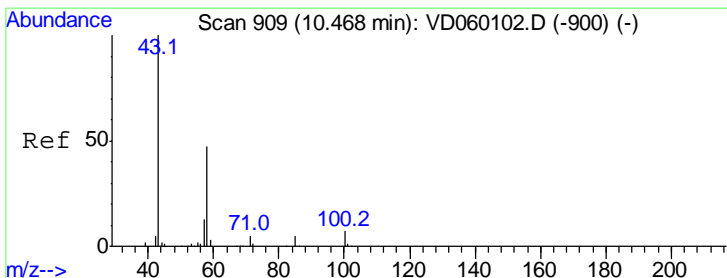
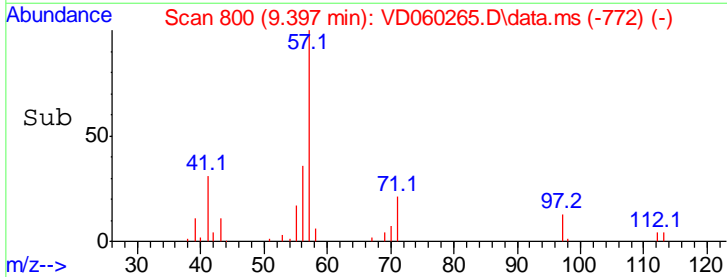
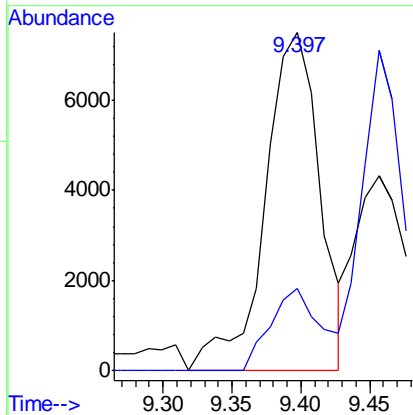
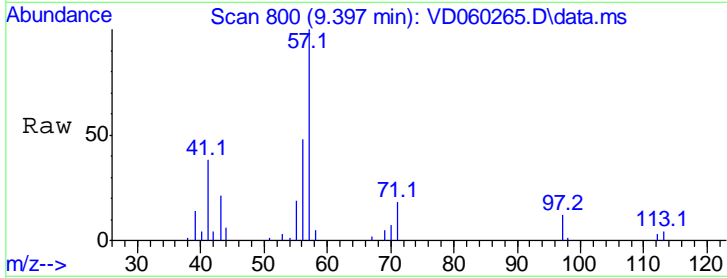




#51  
 4-Methyl-2-Pentanone  
 Concen: 1.87 ug/l  
 RT: 9.397 min Scan# 80  
 Delta R.T. 0.071 min  
 Lab File: VD060265.D  
 Acq: 1 Nov 2018 16:35

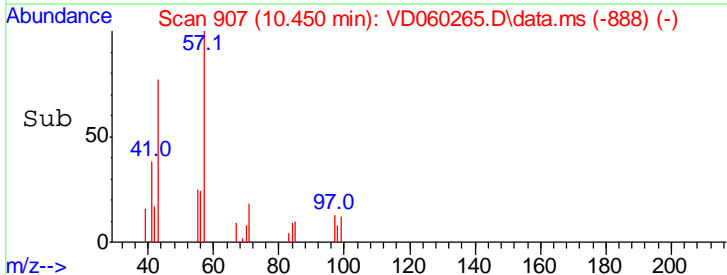
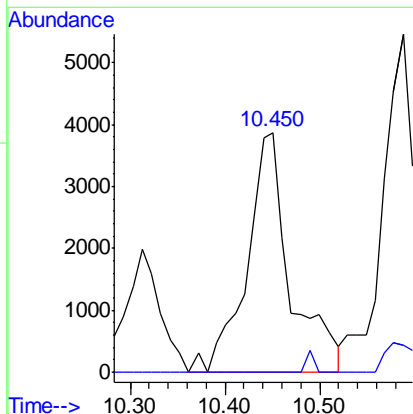
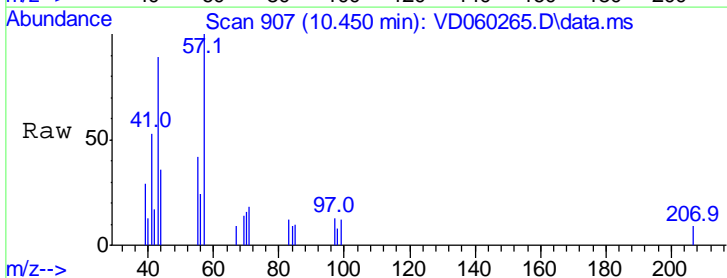
Instrument : MSVOA\_D  
 ClientSampled : TP-3

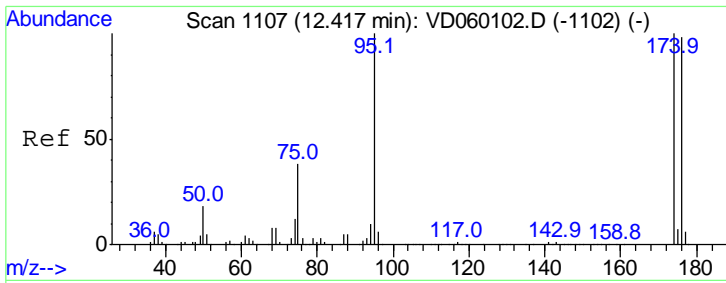
Tgt Ion: 43 Resp: 20752  
 Ion Ratio Lower Upper  
 43 100  
 58 24.3 27.2 40.8#



#59  
 2-Hexanone  
 Concen: 1.54 ug/l  
 RT: 10.450 min Scan# 907  
 Delta R.T. -0.018 min  
 Lab File: VD060265.D  
 Acq: 1 Nov 2018 16:35

Tgt Ion: 43 Resp: 12284  
 Ion Ratio Lower Upper  
 43 100  
 58 0.0 23.3 69.9#

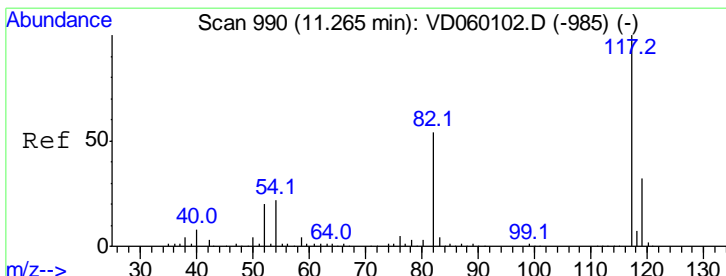
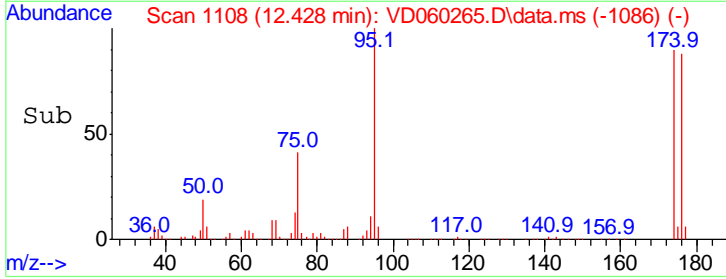
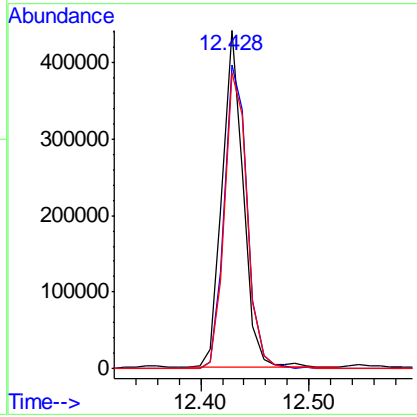
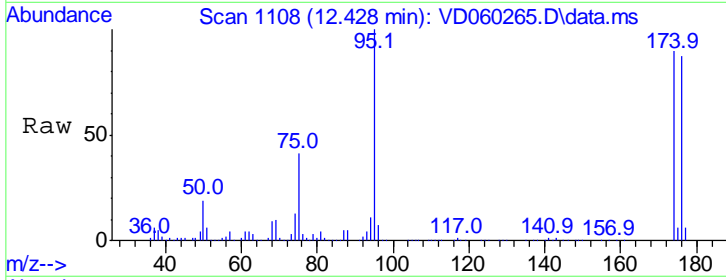




#62  
 4-Bromofluorobenzene  
 Concen: 35.17 ug/l  
 RT: 12.428 min Scan# 11  
 Delta R.T. 0.012 min  
 Lab File: VD060265.D  
 Acq: 1 Nov 2018 16:35

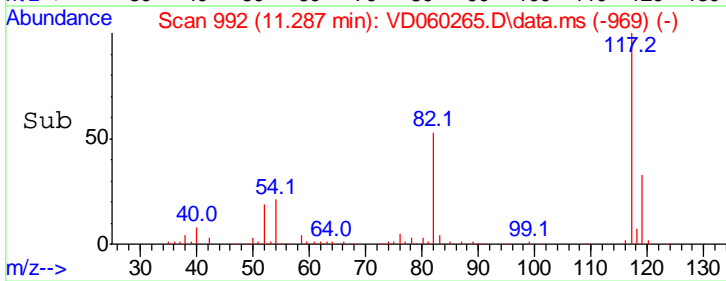
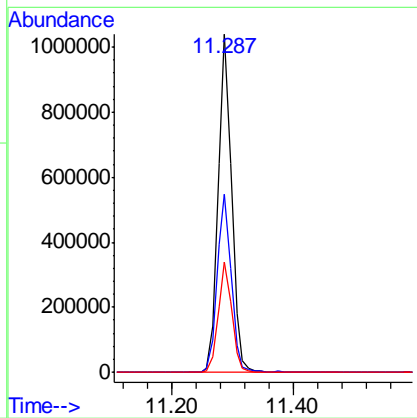
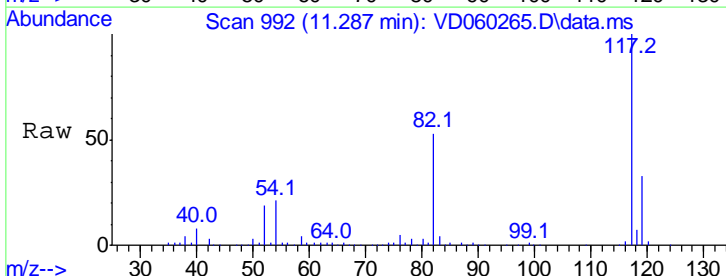
Instrument : MSVOA\_D  
 ClientSampled : TP-3

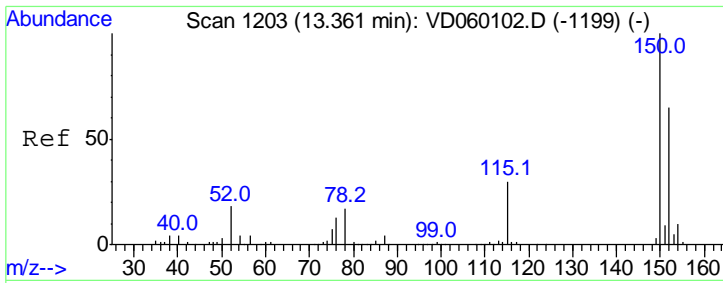
Tgt Ion	Resp	Lower	Upper
95	100		
174	89.6	0.0	200.2
176	87.3	0.0	195.6



#63  
 Chlorobenzene-d5  
 Concen: 50.00 ug/l  
 RT: 11.287 min Scan# 992  
 Delta R.T. 0.021 min  
 Lab File: VD060265.D  
 Acq: 1 Nov 2018 16:35

Tgt Ion	Resp	Lower	Upper
117	100		
82	52.6	43.4	65.2
119	32.7	26.0	39.0



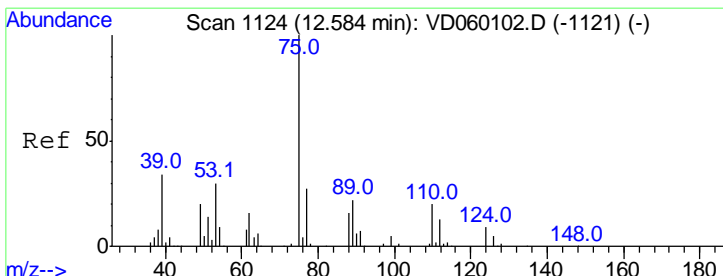
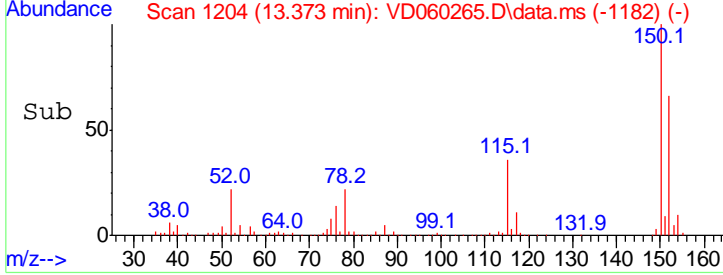
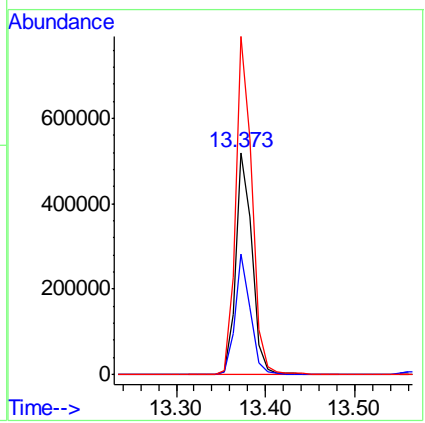
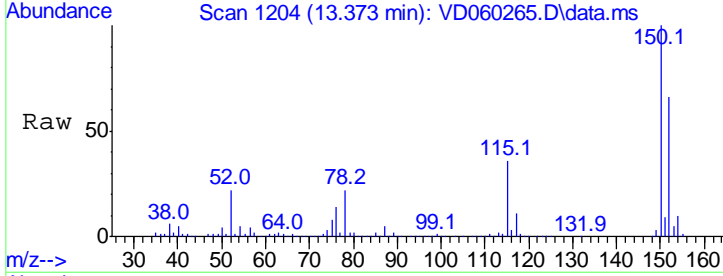


#72  
 1,4-Dichlorobenzene-d4  
 Concen: 50.00 ug/l  
 RT: 13.373 min Scan# 12  
 Delta R.T. 0.012 min  
 Lab File: VD060265.D  
 Acq: 1 Nov 2018 16:35

Instrument : MSVOA\_D  
 ClientSampled : TP-3

Tgt Ion:152 Resp: 671164

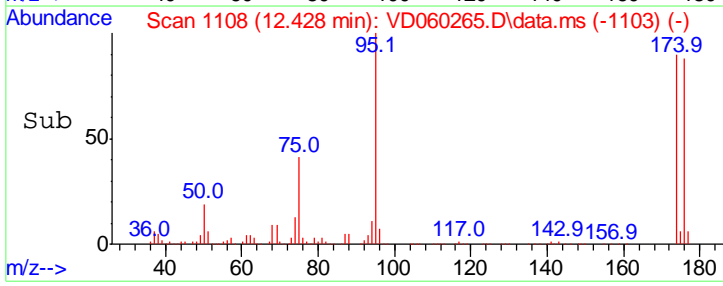
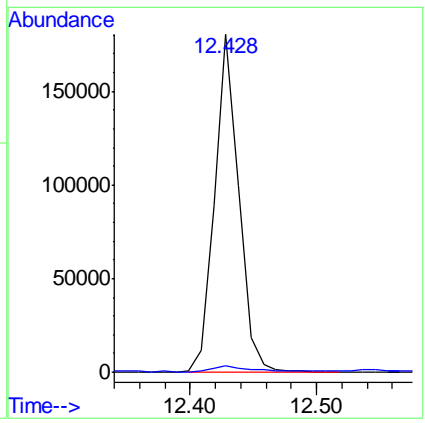
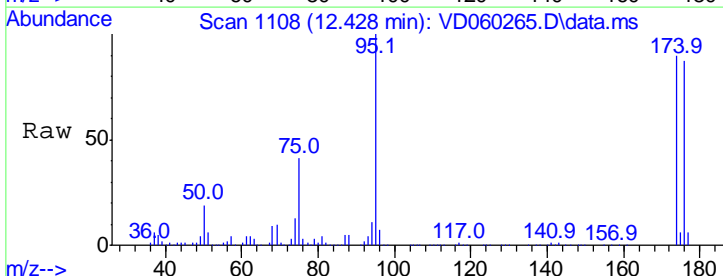
Ion	Ratio	Lower	Upper
152	100		
115	54.1	27.1	81.2
150	152.3	0.0	311.8

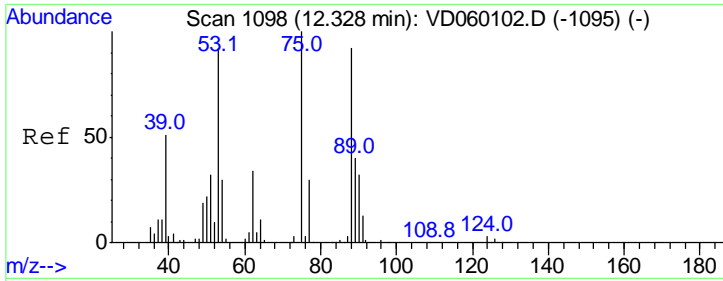


#76  
 1,2,3-Trichloropropane  
 Concen: 24.85 ug/l  
 RT: 12.428 min Scan# 1108  
 Delta R.T. -0.156 min  
 Lab File: VD060265.D  
 Acq: 1 Nov 2018 16:35

Tgt Ion: 75 Resp: 240173

Ion	Ratio	Lower	Upper
75	100		
77	1.9	16.3	48.9#





#81  
 trans-1,4-Dichloro-2-butene  
 Concen: 88.33 ug/l  
 RT: 12.428 min Scan# 11  
 Delta R.T. 0.100 min  
 Lab File: VD060265.D  
 Acq: 1 Nov 2018 16:35

Instrument :  
 MSVOA\_D  
 ClientSampled :  
 TP-3

Tot Ion	Ratio	Lower	Upper
75	100		
53	0.6	73.0	109.6#
89	0.0	32.0	48.0#

