

Data Path : Z:\VOASRV\HPCHEM1\MSVOA D\DATA\VD110718\  
 Data File : VD060301.D  
 Acq On : 7 Nov 2018 15:18  
 Operator : JC/SY  
 Sample : J5827-31  
 Misc : 5.19g/5ml/MSVOA D/SOIL  
 ALS Vial : 11 Sample Multiplier: 1

Instrument :  
 MSVOA\_D  
 ClientSampleID :  
 SP-D

Integration Parameters: RTEINT.P  
 Integrator: RTE  
 Smoothing : ON Filtering: 5  
 Sampling : 1 Min Area: 3 % of largest Peak  
 Start Thrs: 0.2 Max Peaks: 100  
 Stop Thrs : 0 Peak Location: TOP

If leading or trailing edge < 100 prefer < Baseline drop else tangent >  
 Peak separation: 5

Method : Z:\VOASRV\HPCHEM1\MSVOA\_D\METHOD\82D110618S.M  
 Title : SW846 8260

Signal : TIC

peak #	R.T. min	first scan	max scan	last scan	PK TY	peak height	corr. area	corr. % max.	% of total
1	3.713	217	222	237	rVB	233581	621592	11.36%	2.154%
2	4.510	298	303	311	rBV2	27220	75232	1.37%	0.261%
3	5.642	412	418	425	rBV	25131	79502	1.45%	0.275%
4	6.321	481	487	491	rBV	986689	2433373	44.46%	8.432%
5	6.399	491	495	511	rVB	1446752	3889521	71.07%	13.478%
6	6.783	528	534	548	rBV	645359	1610102	29.42%	5.579%
7	7.442	595	601	621	rBV	2021318	4745820	86.71%	16.445%
8	9.460	800	806	818	rBV	2450984	5473140	100.00%	18.965%
9	11.280	987	991	1002	rBV	2459964	4141435	75.67%	14.351%
10	12.432	1104	1108	1117	rBV	1983291	2832408	51.75%	9.815%
11	13.377	1200	1204	1216	rBV	2144932	2956487	54.02%	10.245%

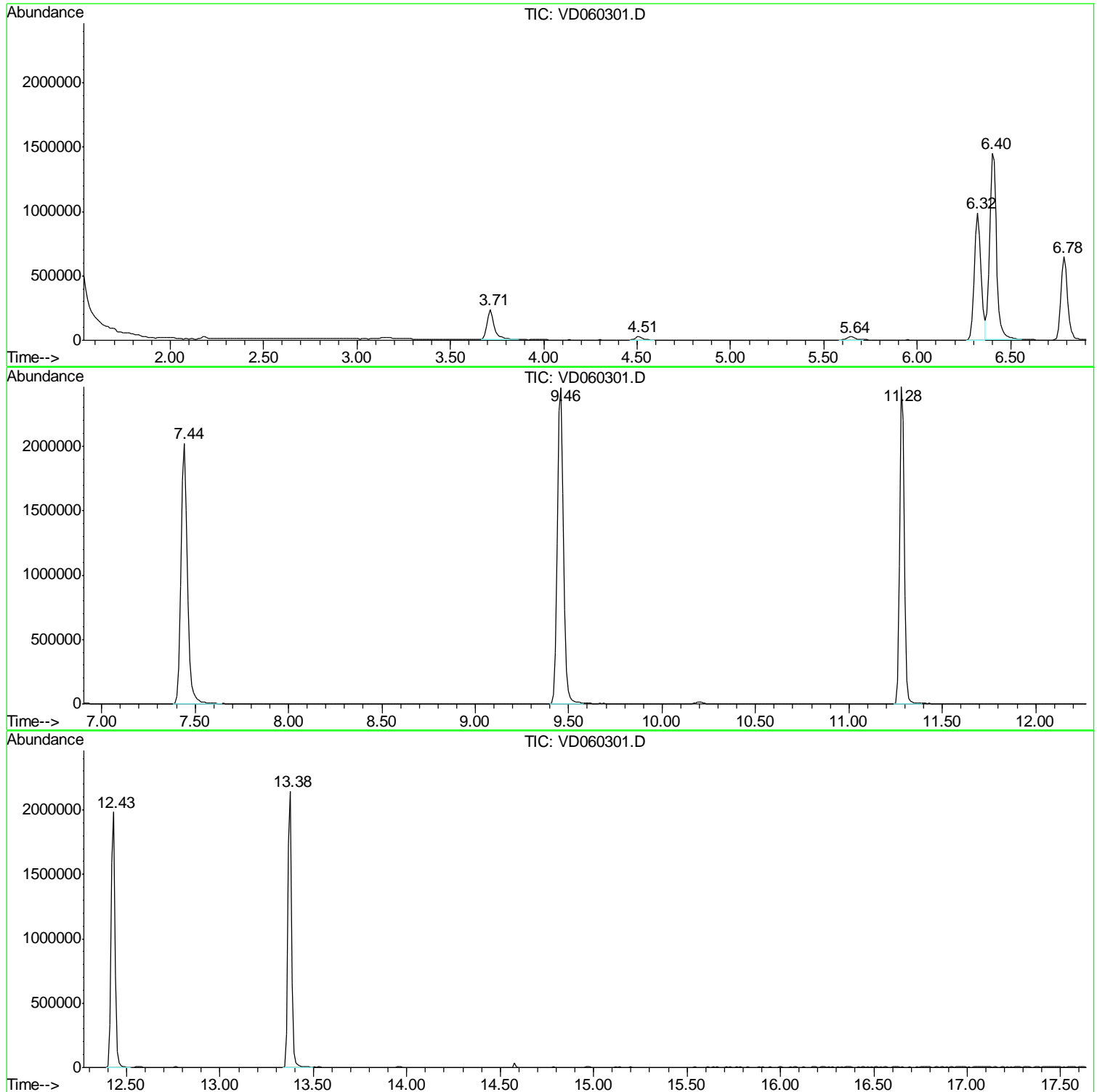
Sum of corrected areas: 28858612

Data Path : Z:\VOASRV\HPCHEM1\MSVOA D\DATA\VD110718\  
Data File : VD060301.D  
Acq On : 7 Nov 2018 15:18  
Operator : JC/SY  
Sample : J5827-31  
Misc : 5.19g/5ml/MSVOA D/SOIL  
ALS Vial : 11 Sample Multiplier: 1

Instrument :  
MSVOA\_D  
ClientSampled :  
SP-D

Quant Method : Z:\VOASRV\HPCHEM1\MSVOA\_D\METHOD\82D110618S.M  
Quant Title : SW846 8260

TIC Library : C:\DATABASE\NIST11.L  
TIC Integration Parameters: LSCINT.P



Data Path : Z:\VOASRV\HPCHEM1\MSVOA\_D\DATA\VD110718\  
Data File : VD060301.D  
Acq On : 7 Nov 2018 15:18  
Operator : JC/SY  
Sample : J5827-31  
Misc : 5.19g/5ml/MSVOA\_D/SOIL  
ALS Vial : 11 Sample Multiplier: 1

Instrument :  
MSVOA\_D  
ClientSampleId :  
SP-D

Quant Method : Z:\VOASRV\HPCHEM1\MSVOA\_D\METHOD\82D110618S.M  
Quant Title : SW846 8260

TIC Library : C:\DATABASE\NIST11.L  
TIC Integration Parameters: LSCINT.P

No Library Search Compounds Detected

\*\*\*\*\*

Data Path : Z:\VOASRV\HPCHEM1\MSVOA\_D\DATA\VD110718\  
Data File : VD060301.D  
Acq On : 7 Nov 2018 15:18  
Operator : JC/SY  
Sample : J5827-31  
Misc : 5.19g/5ml/MSVOA\_D/SOIL  
ALS Vial : 11 Sample Multiplier: 1

Instrument :  
MSVOA\_D  
ClientSampleId :  
SP-D

Quant Method : Z:\VOASRV\HPCHEM1\MSVOA\_D\METHOD\82D110618S.M  
Quant Title : SW846 8260

TIC Library : C:\DATABASE\NIST11.L  
TIC Integration Parameters: LSCINT.P

TIC Top Hit name	RT	EstConc	Units	Response	--Internal Standard--			
					#	RT	Resp	Conc

---