

Data Path : Z:\voasrv\HPCHEM1\MSVOA_D\Data\VD110921\
 Data File : VD070955.D
 Acq On : 09 Nov 2021 17:45
 Operator : VA/SY
 Sample : M4569-01
 Misc : 5.05G/5.00ml/MSVOA_D/SOIL
 ALS Vial : 15 Sample Multiplier: 1

Instrument :
 MSVOA_D
 ClientSampleId :
 CL-02-110521

Quant Time: Nov 10 03:58:06 2021
 Quant Method : Z:\voasrv\HPCHEM1\MSVOA_D\Method\82D110921S.M
 Quant Title : SW846 8260
 QLast Update : Wed Nov 10 03:55:51 2021
 Response via : Initial Calibration

Compound	R.T.	QIon	Response	Conc	Units	Dev(Min)

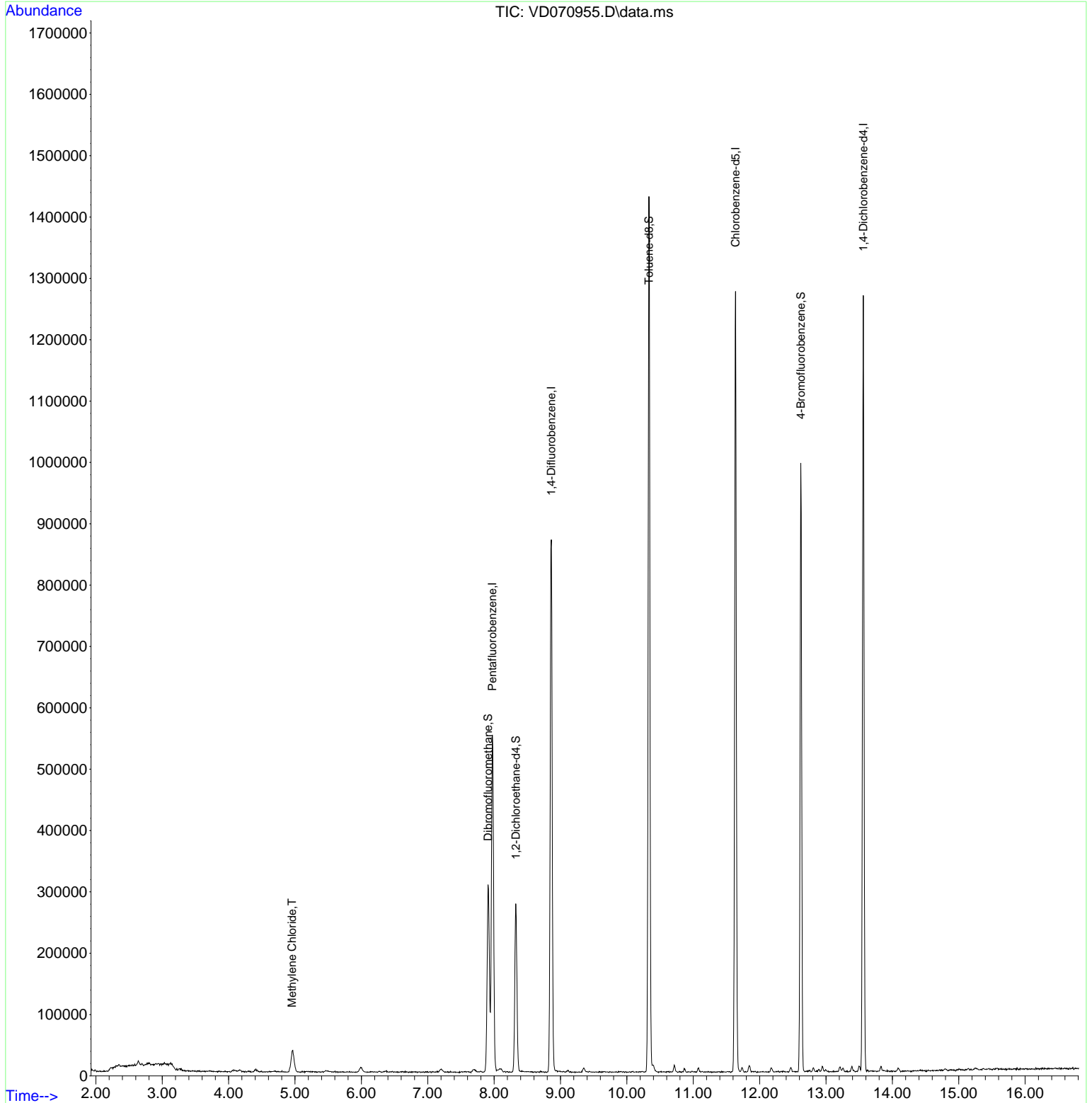
Internal Standards						
1) Pentafluorobenzene	7.973	168	405371	50.000	ug/l	0.00
34) 1,4-Difluorobenzene	8.861	114	742928	50.000	ug/l	0.00
63) Chlorobenzene-d5	11.638	117	703193	50.000	ug/l	0.00
72) 1,4-Dichlorobenzene-d4	13.561	152	311959	50.000	ug/l	0.00
System Monitoring Compounds						
33) 1,2-Dichloroethane-d4	8.326	65	209279	48.489	ug/l	0.00
Spiked Amount	50.000	Range	50 - 163	Recovery	=	96.980%
35) Dibromofluoromethane	7.909	113	219354	52.324	ug/l	0.00
Spiked Amount	50.000	Range	54 - 147	Recovery	=	104.640%
50) Toluene-d8	10.332	98	934233	56.904	ug/l	0.00
Spiked Amount	50.000	Range	49 - 140	Recovery	=	113.800%
62) 4-Bromofluorobenzene	12.620	95	328961	55.649	ug/l	0.00
Spiked Amount	50.000	Range	25 - 144	Recovery	=	111.300%
Target Compounds						
20) Methylene Chloride	4.956	84	25480	4.809	ug/l	94

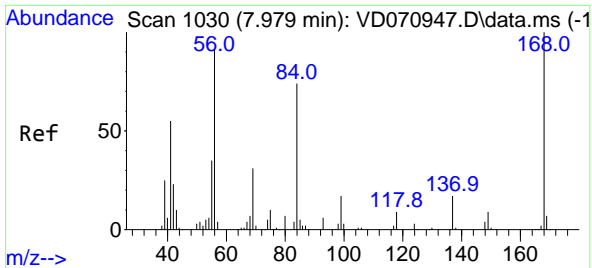
(#) = qualifier out of range (m) = manual integration (+) = signals summed

Data Path : Z:\voasrv\HPCHEM1\MSVOA_D\Data\VD110921\
 Data File : VD070955.D
 Acq On : 09 Nov 2021 17:45
 Operator : VA/SY
 Sample : M4569-01
 Misc : 5.05G/5.00ml/MSVOA_D/SOIL
 ALS Vial : 15 Sample Multiplier: 1

Instrument :
 MSVOA_D
 ClientSampleId :
 CL-02-110521

Quant Time: Nov 10 03:58:06 2021
 Quant Method : Z:\voasrv\HPCHEM1\MSVOA_D\Method\82D110921S.M
 Quant Title : SW846 8260
 QLast Update : Wed Nov 10 03:55:51 2021
 Response via : Initial Calibration

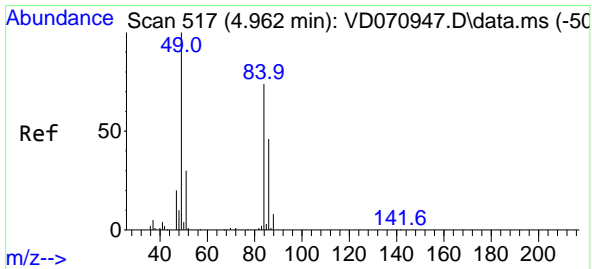
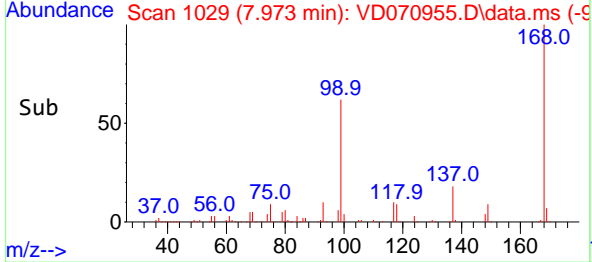
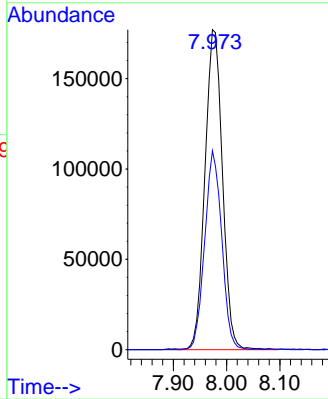
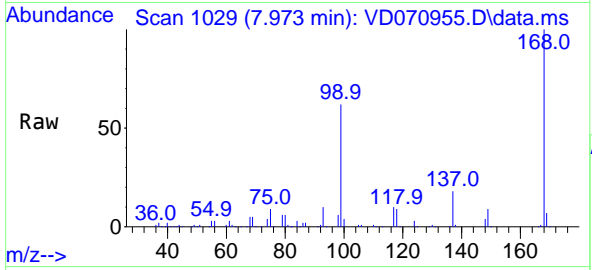




#1
 Pentafluorobenzene
 Concen: 50.000 ug/l
 RT: 7.973 min Scan# 10
 Delta R.T. -0.006 min
 Lab File: VD070955.D
 Acq: 09 Nov 2021 17:45

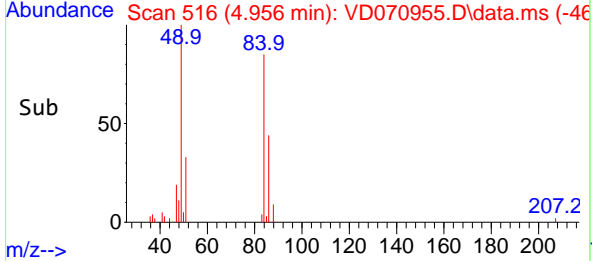
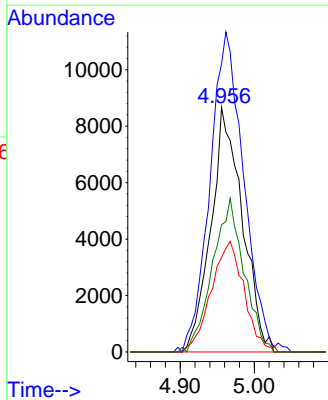
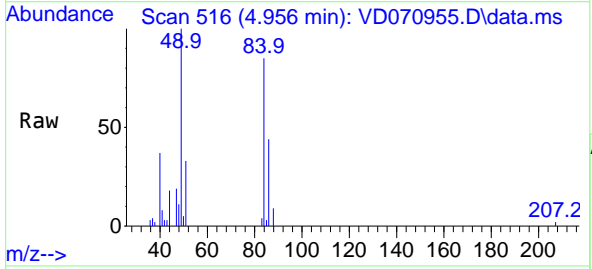
Instrument : MSVOA_D
 ClientSampleId : CL-02-110521

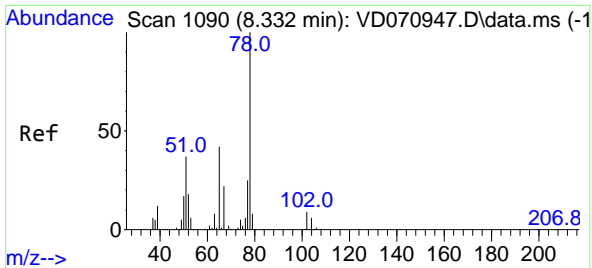
Tgt Ion:168 Resp: 405371
 Ion Ratio Lower Upper
 168 100
 99 62.0 46.6 69.8



#20
 Methylene Chloride
 Concen: 4.809 ug/l
 RT: 4.956 min Scan# 516
 Delta R.T. -0.006 min
 Lab File: VD070955.D
 Acq: 09 Nov 2021 17:45

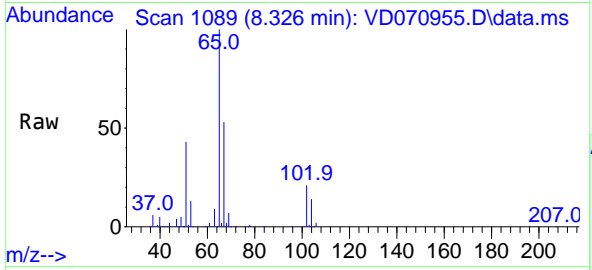
Tgt Ion: 84 Resp: 25480
 Ion Ratio Lower Upper
 84 100
 49 115.9 95.8 143.6
 51 38.6 30.9 46.3
 86 52.1 50.3 75.5



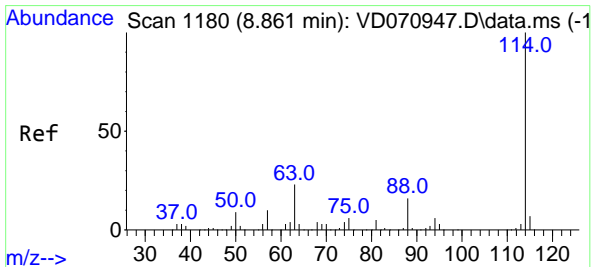
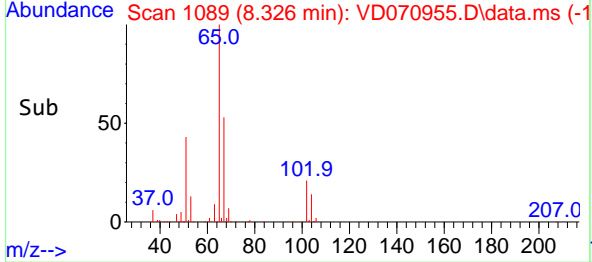
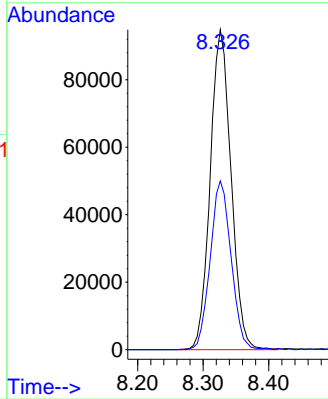


#33
 1,2-Dichloroethane-d4
 Concen: 48.489 ug/l
 RT: 8.326 min Scan# 1090
 Delta R.T. -0.006 min
 Lab File: VD070955.D
 Acq: 09 Nov 2021 17:45

Instrument : MSVOA_D
 ClientSampleId : CL-02-110521

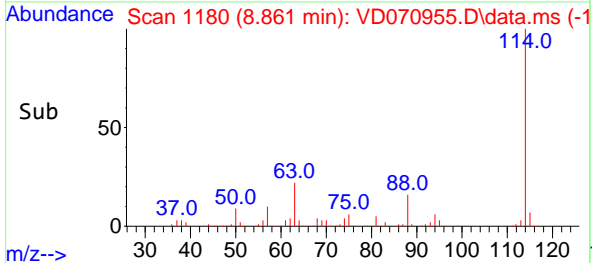
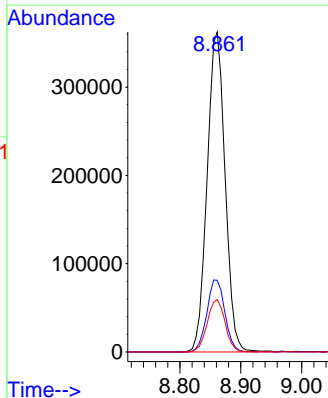
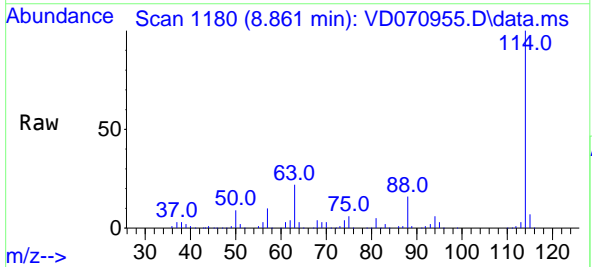


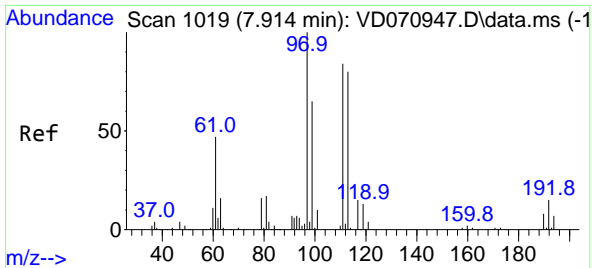
Tgt Ion: 65 Resp: 209279
 Ion Ratio Lower Upper
 65 100
 67 52.8 0.0 112.2



#34
 1,4-Difluorobenzene
 Concen: 50.000 ug/l
 RT: 8.861 min Scan# 1180
 Delta R.T. 0.000 min
 Lab File: VD070955.D
 Acq: 09 Nov 2021 17:45

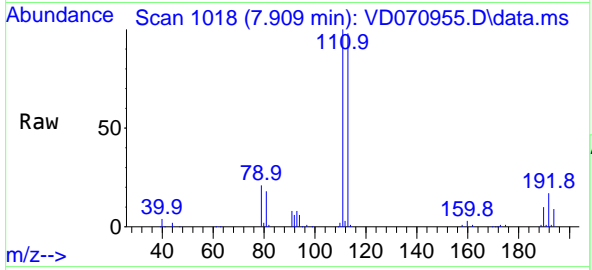
Tgt Ion: 114 Resp: 742928
 Ion Ratio Lower Upper
 114 100
 63 22.4 0.0 41.8
 88 16.3 0.0 32.8



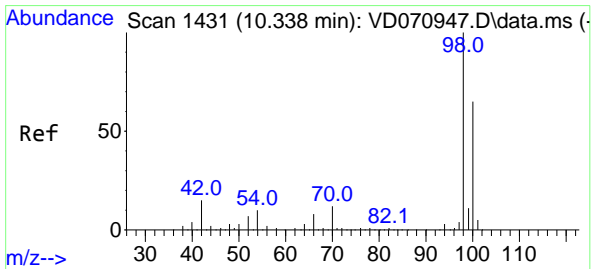
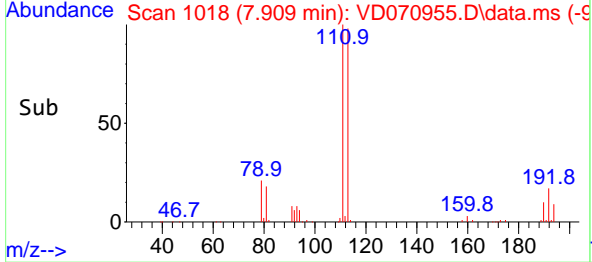
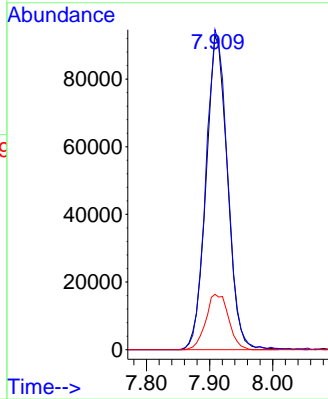


#35
 Dibromofluoromethane
 Concen: 52.324 ug/l
 RT: 7.909 min Scan# 1019
 Delta R.T. -0.005 min
 Lab File: VD070955.D
 Acq: 09 Nov 2021 17:45

Instrument : MSVOA_D
 ClientSampleId : CL-02-110521

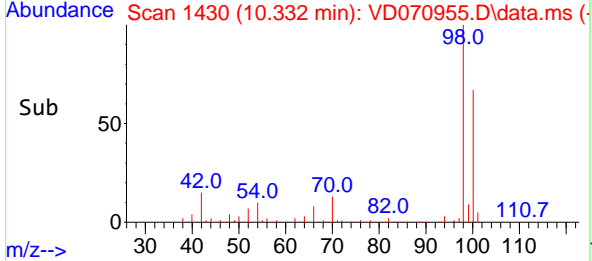
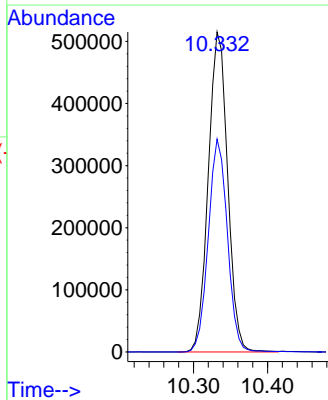
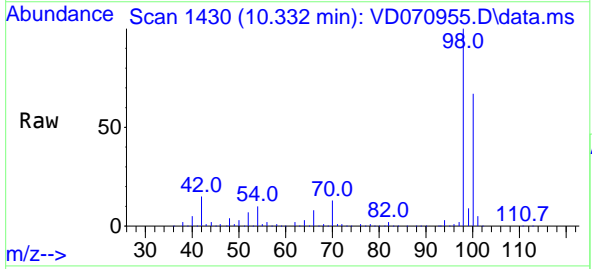


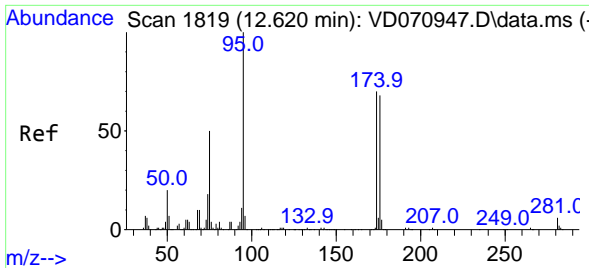
Tgt Ion:113 Resp: 219354
 Ion Ratio Lower Upper
 113 100
 111 102.7 82.0 123.0
 192 18.7 15.2 22.8



#50
 Toluene-d8
 Concen: 56.904 ug/l
 RT: 10.332 min Scan# 1430
 Delta R.T. -0.006 min
 Lab File: VD070955.D
 Acq: 09 Nov 2021 17:45

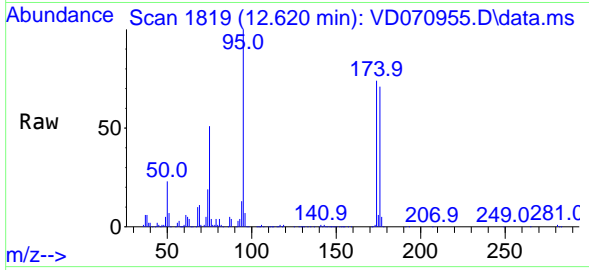
Tgt Ion: 98 Resp: 934233
 Ion Ratio Lower Upper
 98 100
 100 65.7 51.8 77.6





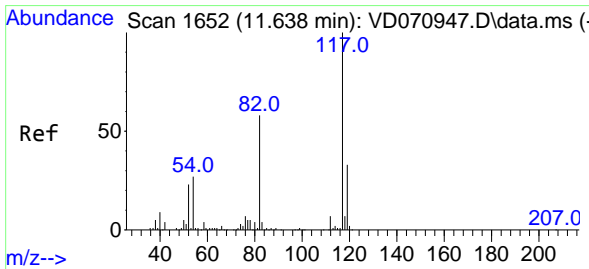
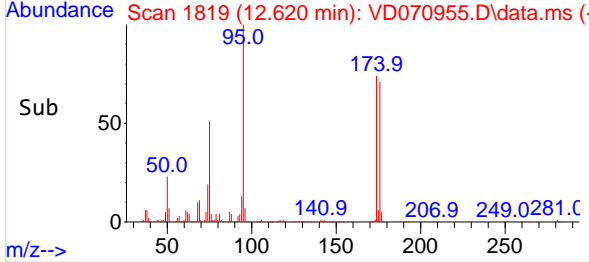
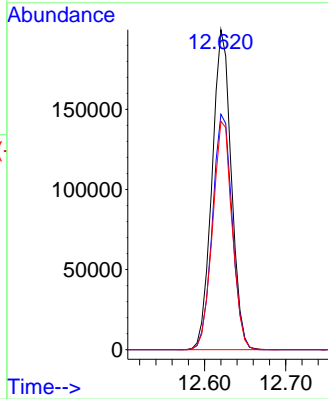
#62
 4-Bromofluorobenzene
 Concen: 55.649 ug/l
 RT: 12.620 min Scan# 1819
 Delta R.T. 0.000 min
 Lab File: VD070955.D
 Acq: 09 Nov 2021 17:45

Instrument : MSVOA_D
 ClientSampleId : CL-02-110521



Tgt Ion: 95 Resp: 328961

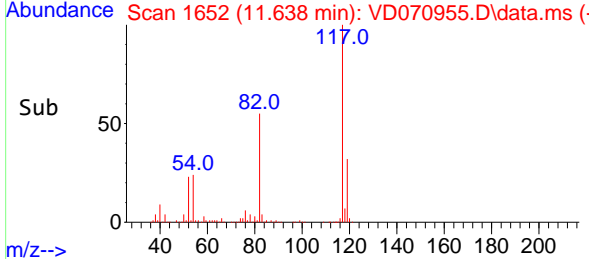
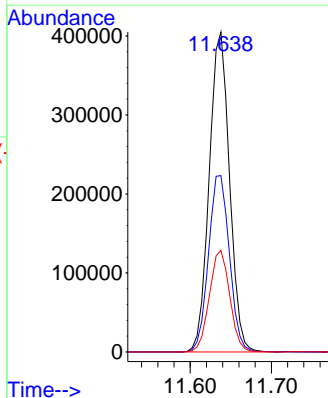
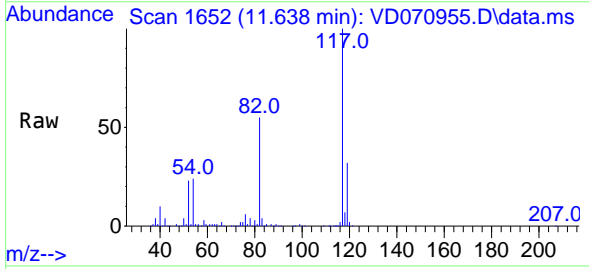
Ion	Ratio	Lower	Upper
95	100		
174	75.5	0.0	159.4
176	72.5	0.0	154.0

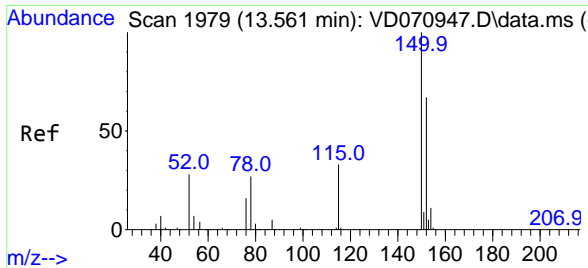


#63
 Chlorobenzene-d5
 Concen: 50.000 ug/l
 RT: 11.638 min Scan# 1652
 Delta R.T. -0.000 min
 Lab File: VD070955.D
 Acq: 09 Nov 2021 17:45

Tgt Ion: 117 Resp: 703193

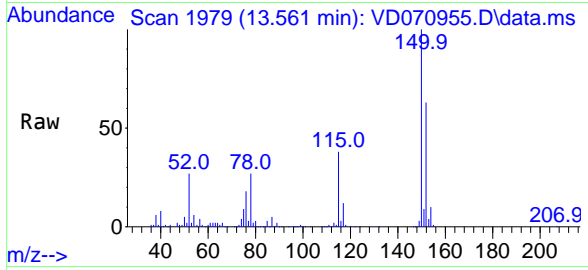
Ion	Ratio	Lower	Upper
117	100		
82	55.1	44.7	67.1
119	31.8	26.2	39.4





#72
 1,4-Dichlorobenzene-d4
 Concen: 50.000 ug/l
 RT: 13.561 min Scan# 1979
 Delta R.T. 0.000 min
 Lab File: VD070955.D
 Acq: 09 Nov 2021 17:45

Instrument :
 MSVOA_D
 ClientSampleId :
 CL-02-110521



Tgt Ion:152 Resp: 311959

Ion	Ratio	Lower	Upper
152	100		
115	60.3	29.8	89.3
150	158.2	0.0	349.2

