

Data Path : Z:\VOASRV\HPCHEM1\MSVOA_D\DATA\VD111218\
 Data File : VD060345.D
 Acq On : 12 Nov 2018 18:50
 Operator : JC/SY
 Sample : J5907-15
 Misc : 6.16g/5ml/MSVOA_D/SOIL
 ALS Vial : 18 Sample Multiplier: 1

Instrument :
 MSVOA_D
 ClientSampleId :
 TP-4-S

Quant Time: Nov 13 00:42:01 2018
 Quant Method : Z:\VOASRV\HPCHEM1\MSVOA_D\METHOD\82D110618S.M
 Quant Title : SW846 8260
 QLast Update : Tue Nov 06 13:56:04 2018
 Response via : Initial Calibration

Internal Standards	R.T.	QIon	Response	Conc	Units	Dev(Min)
1) Pentafluorobenzene	6.38	168	1521225	50.00	ug/l	-0.04
34) 1,4-Difluorobenzene	7.43	114	2005741	50.00	ug/l	-0.03
63) Chlorobenzene-d5	11.26	117	1360158	50.00	ug/l	-0.03
72) 1,4-Dichlorobenzene-d4	13.36	152	436182	50.00	ug/l	-0.02

System Monitoring Compounds

33) 1,2-Dichloroethane-d4	6.77	65	475639	43.67	ug/l	-0.03
Spiked Amount	50.000		Recovery	=	87.34%	
35) Dibromofluoromethane	6.30	113	660993	44.19	ug/l	-0.03
Spiked Amount	50.000		Recovery	=	88.38%	
50) Toluene-d8	9.43	98	1762528	40.26	ug/l	-0.03
Spiked Amount	50.000		Recovery	=	80.52%	
62) 4-Bromofluorobenzene	12.42	95	455030	28.69	ug/l	-0.02
Spiked Amount	50.000		Recovery	=	57.38%	

Target Compounds

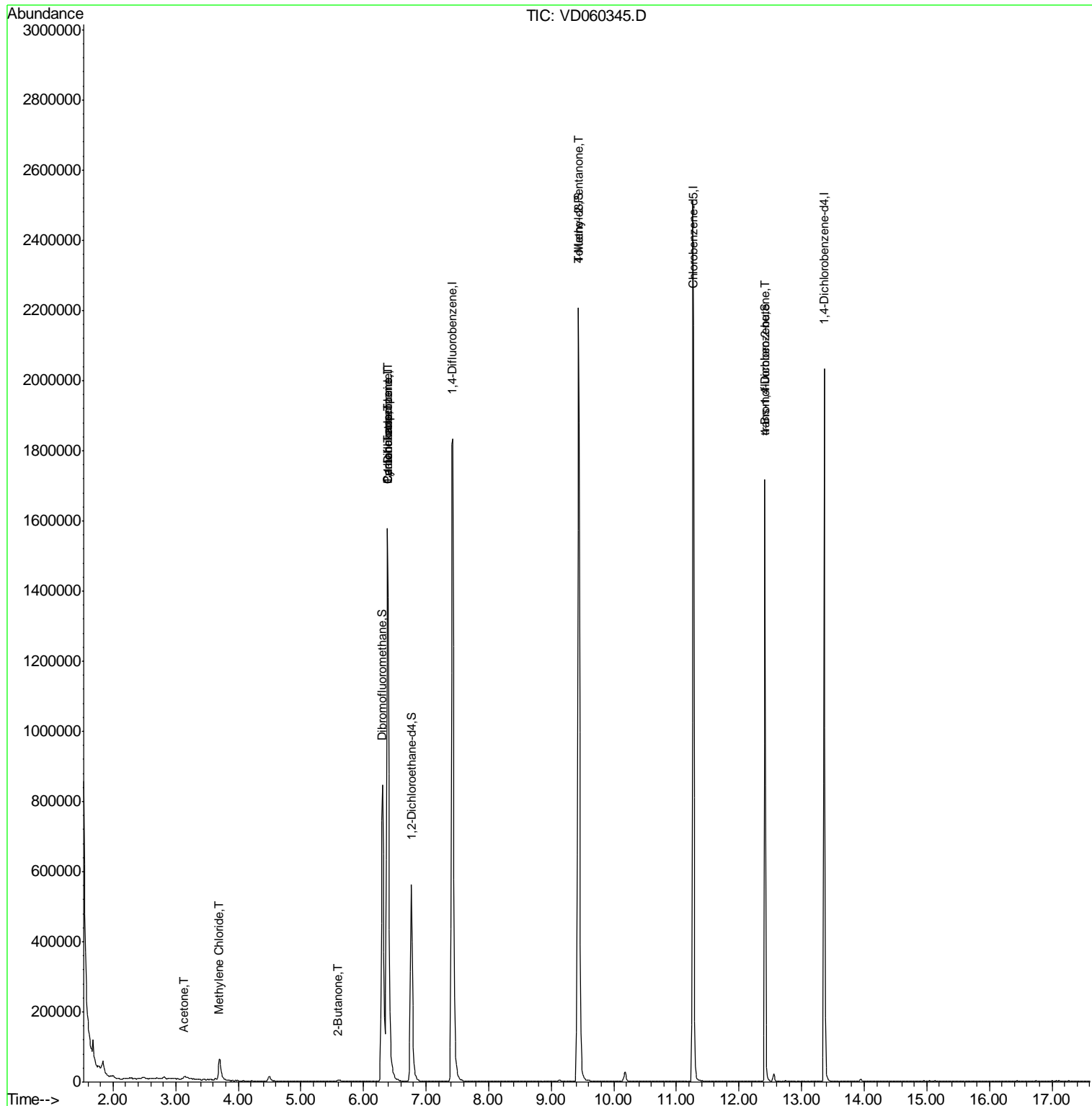
					Qvalue
2) Dichlorodifluoromethane	1.58	85	264	Below Cal	# 41
16) Acetone	3.14	43	18796	9.948	ug/l 95
20) Methylene Chloride	3.71	84	39077	2.332	ug/l 99
25) 2-Butanone	5.60	43	6992	1.780	ug/l 98
31) Cyclohexane	6.38	56	28636	1.101	ug/l # 1
36) 1,1-Dichloropropene	6.38	75	109834	5.543	ug/l # 47
38) Carbon Tetrachloride	6.38	117	115937	6.307	ug/l # 16
51) 4-Methyl-2-Pentanone	9.43	43	9723	1.304	ug/l # 1
81) trans-1,4-Dichloro-2-buten	12.42	75	193133	130.013	ug/l # 15
89) n-Butylbenzene	13.64	91	237	Below Cal	# 29

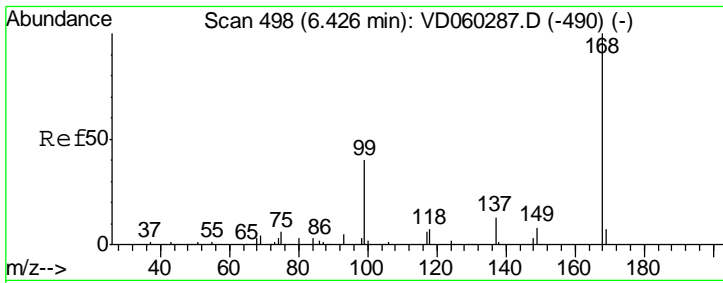
(#) = qualifier out of range (m) = manual integration (+) = signals summed

Data Path : Z:\VOASRV\HPCHEM1\MSVOA_D\DATA\VD111218\
 Data File : VD060345.D
 Acq On : 12 Nov 2018 18:50
 Operator : JC/SY
 Sample : J5907-15
 Misc : 6.16g/5ml/MSVOA_D/SOIL
 ALS Vial : 18 Sample Multiplier: 1

Instrument :
 MSVOA_D
 Client Sampled :
 TP-4-S

Quant Time: Nov 13 00:42:01 2018
 Quant Method : Z:\VOASRV\HPCHEM1\MSVOA_D\METHOD\82D110618S.M
 Quant Title : SW846 8260
 QLast Update : Tue Nov 06 13:56:04 2018
 Response via : Initial Calibration

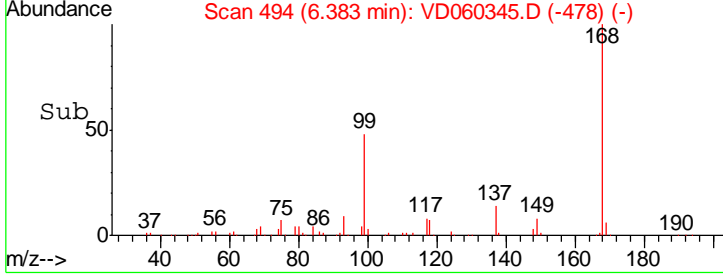
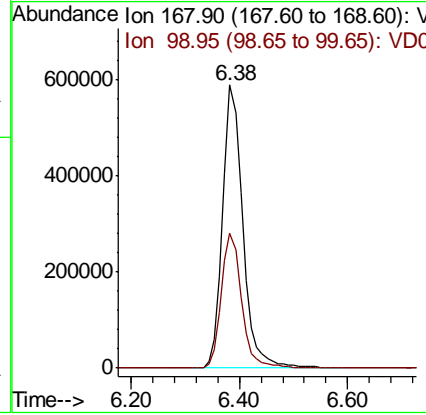
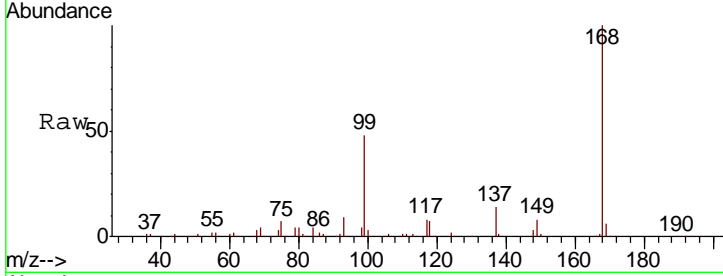




#1
 Pentafluorobenzene
 Concen: 50.000 ug/l
 RT: 6.38 min Scan# 494
 Delta R.T. -0.04 min
 Lab File: VD060345.D
 Acq: 12 Nov 2018 18:50

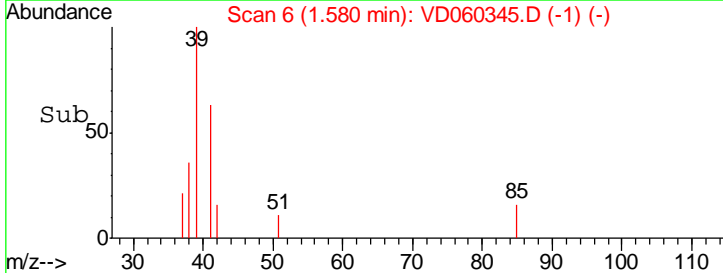
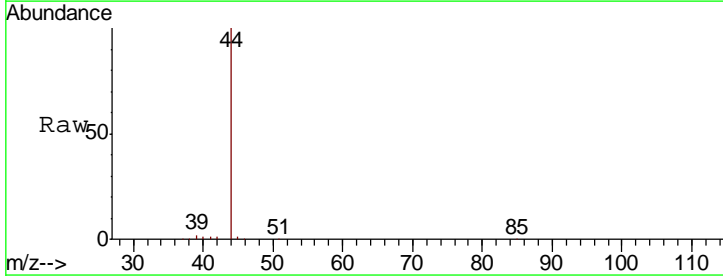
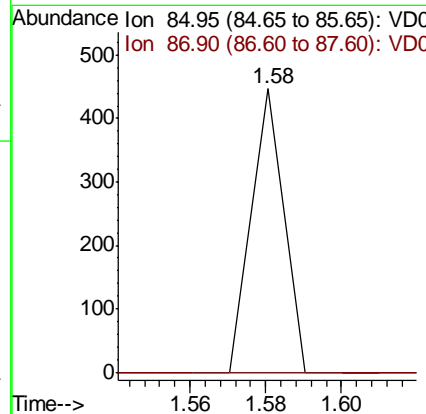
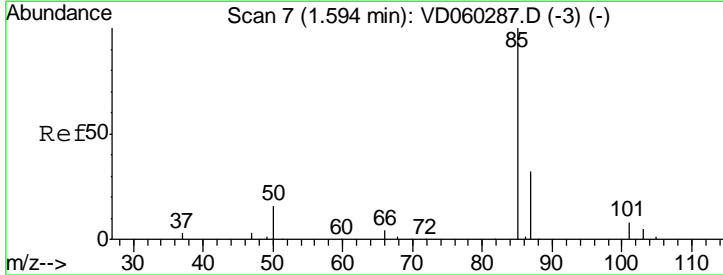
Instrument : MSVOA_D
 ClientSampleID : TP-4-S

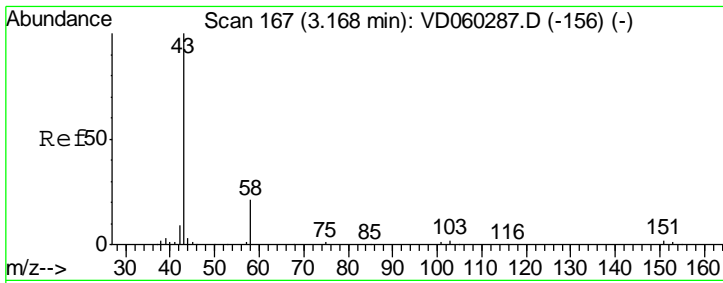
Tgt Ion: 168 Resp: 1521225
 Ion Ratio Lower Upper
 168 100
 99 47.8 39.8 59.8



#2
 Dichlorodifluoromethane
 Concen: Below Cal
 RT: 1.58 min Scan# 6
 Delta R.T. -0.01 min
 Lab File: VD060345.D
 Acq: 12 Nov 2018 18:50

Tgt Ion: 85 Resp: 264
 Ion Ratio Lower Upper
 85 100
 87 0.0 16.8 50.4#

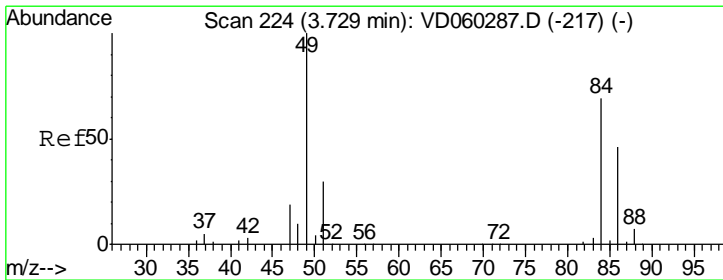
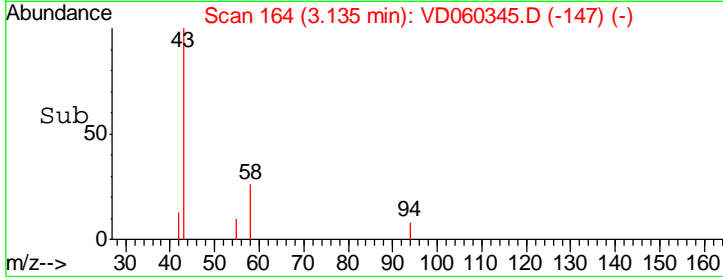
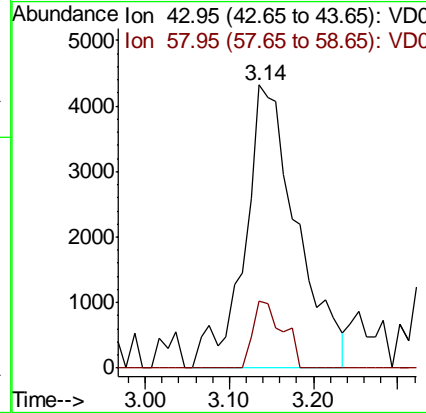
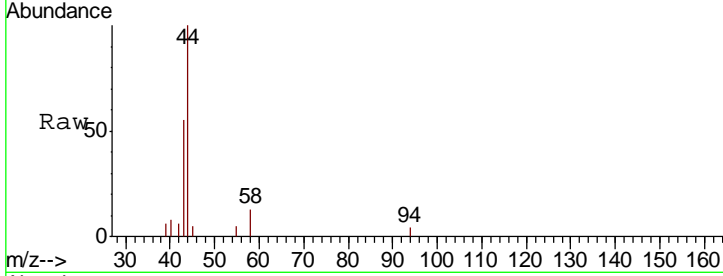




#16
 Acetone
 Concen: 9.948 ug/l
 RT: 3.14 min Scan# 164
 Delta R.T. -0.03 min
 Lab File: VD060345.D
 Acq: 12 Nov 2018 18:50

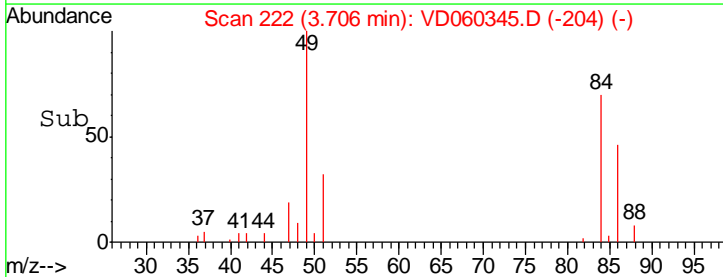
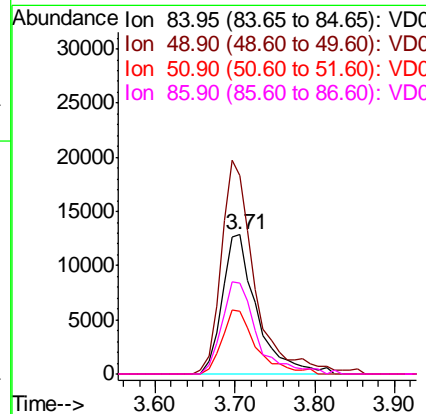
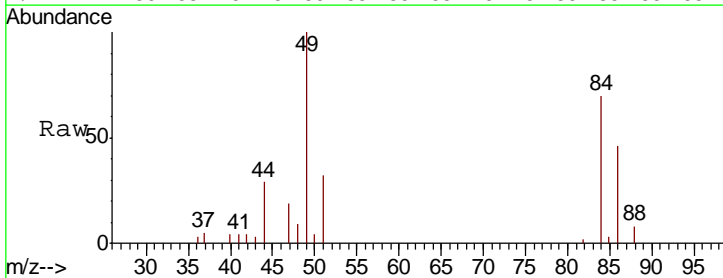
Instrument :
 MSVOA_D
 ClientSampled :
 TP-4-S

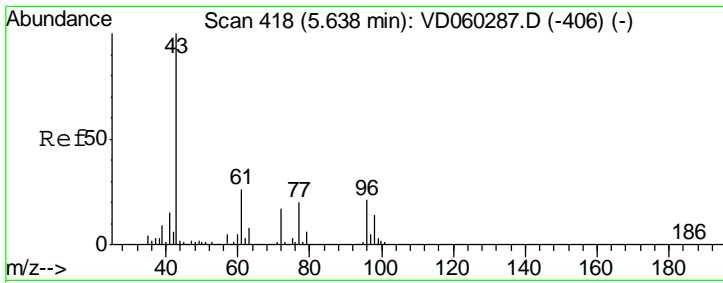
Tgt Ion: 43 Resp: 18796
 Ion Ratio Lower Upper
 43 100
 58 23.5 16.9 25.3



#20
 Methylene Chloride
 Concen: 2.332 ug/l
 RT: 3.71 min Scan# 222
 Delta R.T. -0.02 min
 Lab File: VD060345.D
 Acq: 12 Nov 2018 18:50

Tgt Ion: 84 Resp: 39077
 Ion Ratio Lower Upper
 84 100
 49 142.7 115.6 173.4
 51 45.1 35.6 53.4
 86 65.4 52.3 78.5

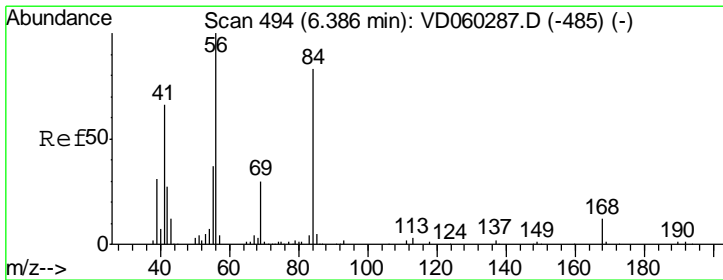
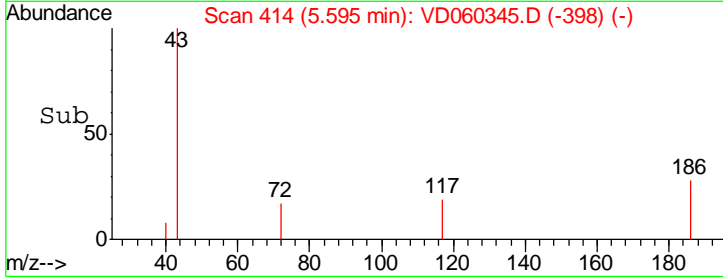
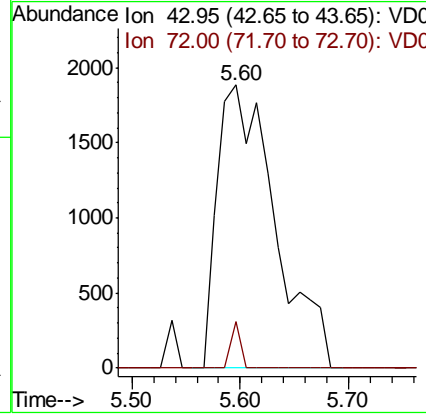
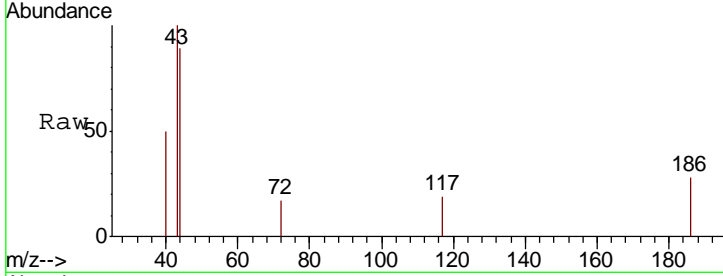




#25
 2-Butanone
 Concen: 1.780 ug/l
 RT: 5.60 min Scan# 414
 Delta R.T. -0.04 min
 Lab File: VD060345.D
 Acq: 12 Nov 2018 18:50

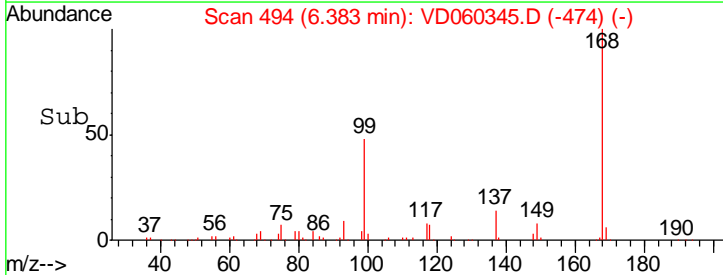
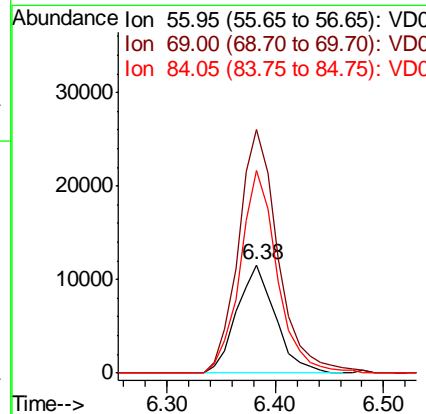
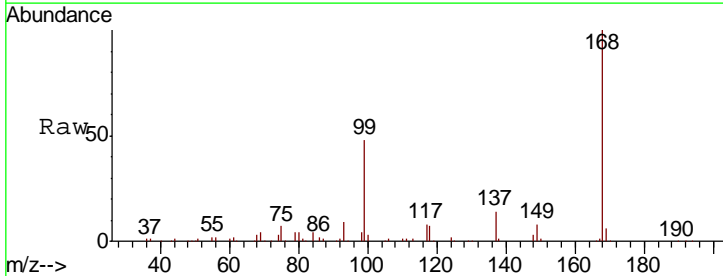
Instrument :
 MSVOA_D
 ClientSampled :
 TP-4-S

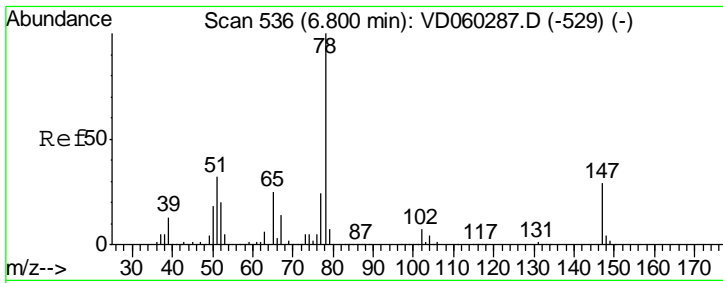
Tgt Ion: 43 Resp: 6992
 Ion Ratio Lower Upper
 43 100
 72 16.5 13.8 20.8



#31
 Cyclohexane
 Concen: 1.101 ug/l
 RT: 6.38 min Scan# 494
 Delta R.T. -0.00 min
 Lab File: VD060345.D
 Acq: 12 Nov 2018 18:50

Tgt Ion: 56 Resp: 28636
 Ion Ratio Lower Upper
 56 100
 69 225.4 22.2 33.2#
 84 188.2 63.0 94.4#

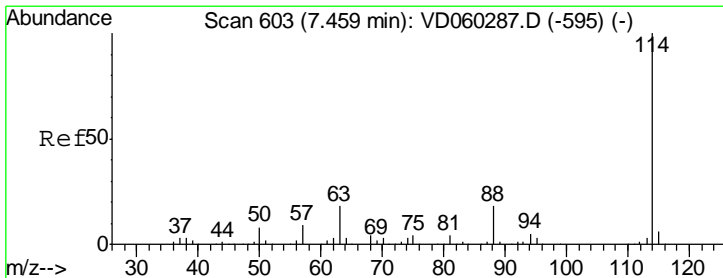
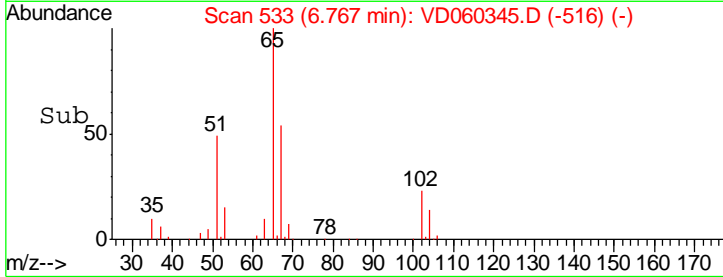
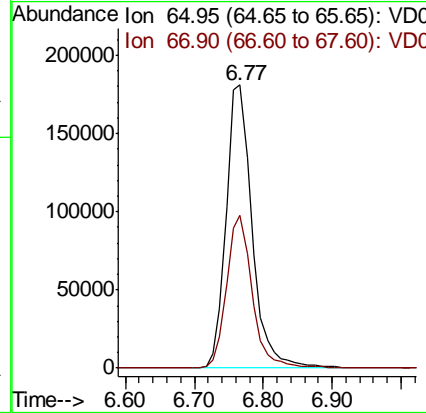
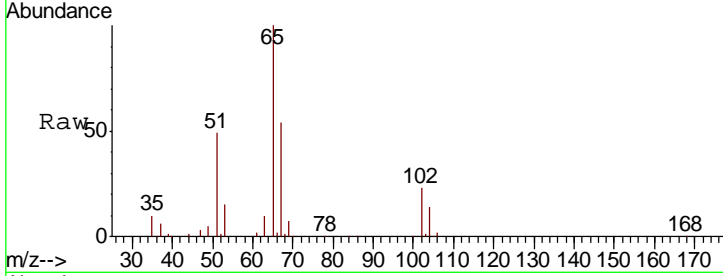




#33
 1,2-Dichloroethane-d4
 Concen: N.D. ug/l
 RT: 6.77 min Scan# 533
 Delta R.T. -0.03 min
 Lab File: VD060345.D
 Acq: 12 Nov 2018 18:50

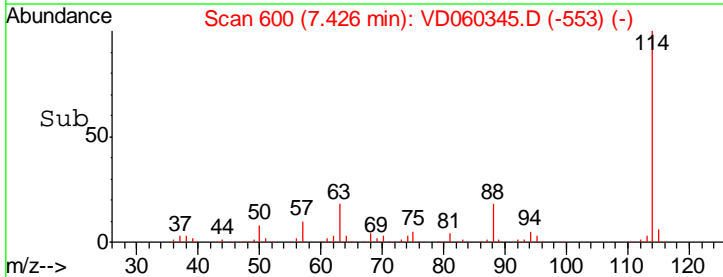
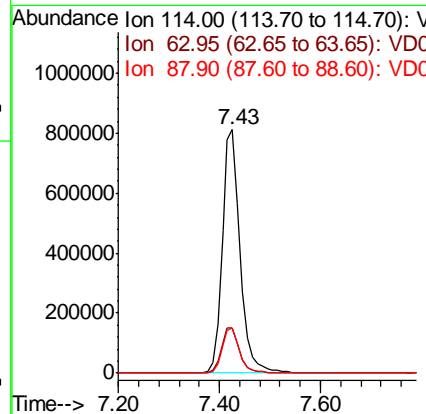
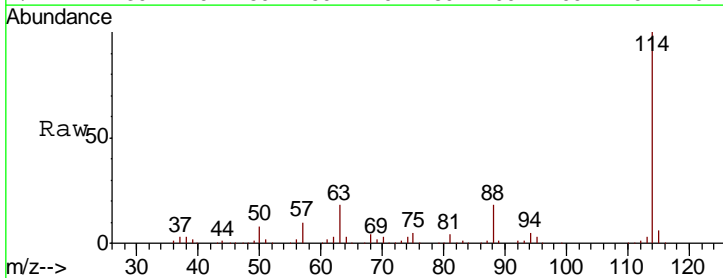
Instrument :
 MSVOA_D
ClientSampled :
 TP-4-S

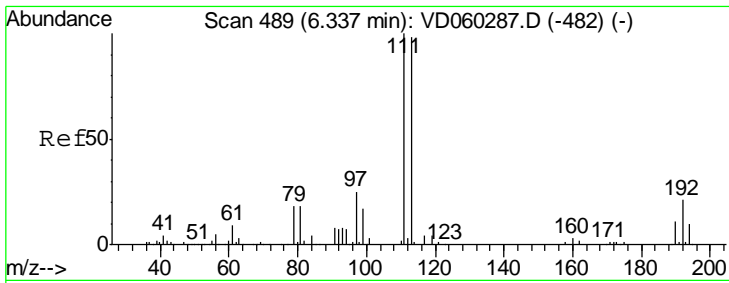
Tgt Ion: 65 Resp: 475639
 Ion Ratio Lower Upper
 65 100
 67 53.8 0.0 109.8



#34
 1,4-Difluorobenzene
 Concen: 50.000 ug/l
 RT: 7.43 min Scan# 600
 Delta R.T. -0.03 min
 Lab File: VD060345.D
 Acq: 12 Nov 2018 18:50

Tgt Ion: 114 Resp: 2005741
 Ion Ratio Lower Upper
 114 100
 63 18.5 0.0 34.0
 88 18.3 0.0 35.4

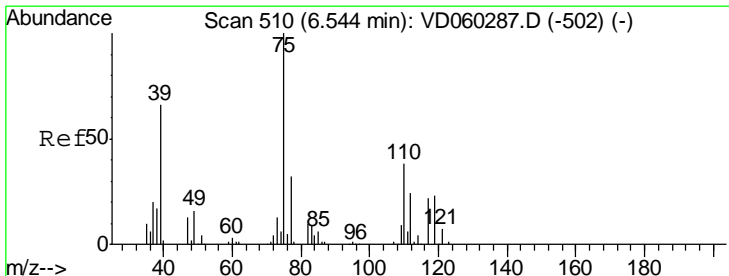
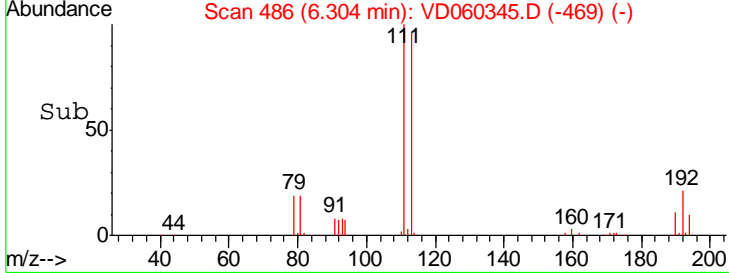
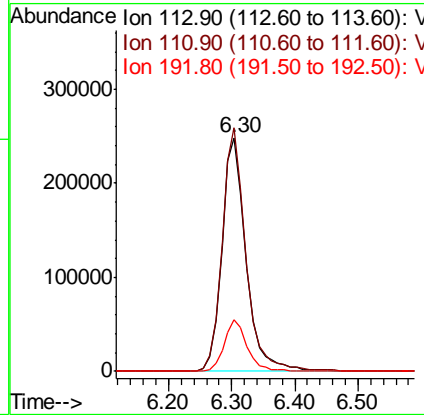
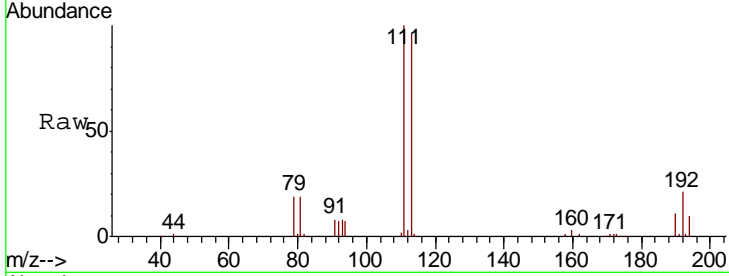




#35
 Dibromofluoromethane
 Concen: 50.000 ug/l
 RT: 6.30 min Scan# 486
 Delta R.T. -0.03 min
 Lab File: VD060345.D
 Acq: 12 Nov 2018 18:50

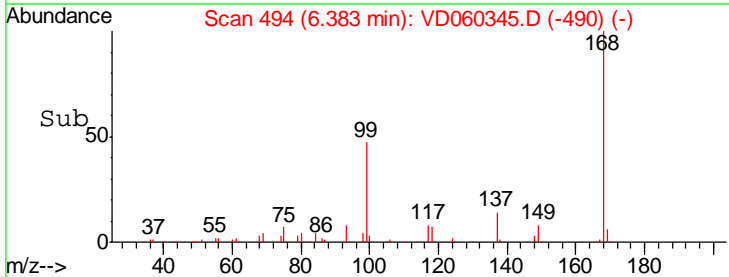
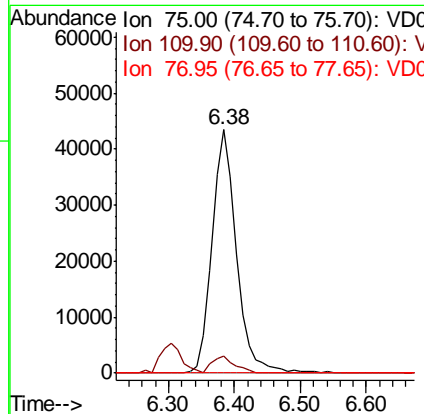
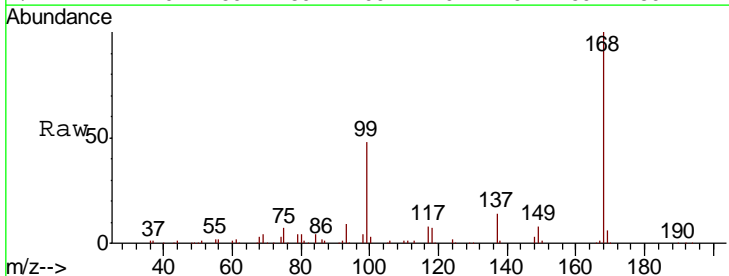
Instrument : MSVOA_D
 ClientSampled : TP-4-S

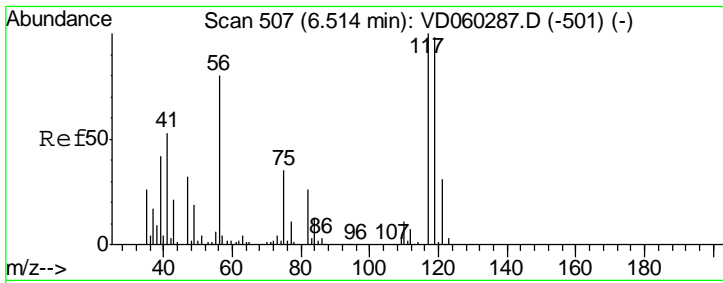
Tgt Ion	Resp	Lower	Upper
113	660993		
111	104.2	81.6	122.4
192	22.1	16.5	24.7



#36
 1,1-Dichloropropene
 Concen: 5.543 ug/l
 RT: 6.38 min Scan# 494
 Delta R.T. -0.16 min
 Lab File: VD060345.D
 Acq: 12 Nov 2018 18:50

Tgt Ion	Resp	Lower	Upper
75	109834		
110	7.0	18.0	54.0#
77	0.0	25.6	38.4#

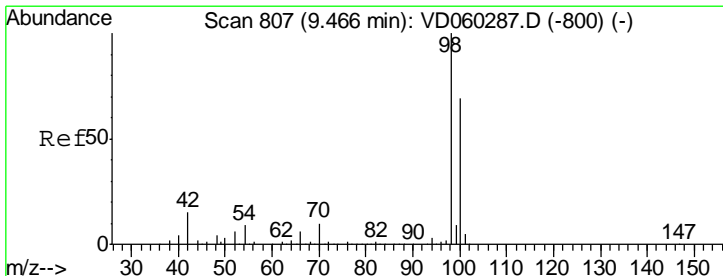
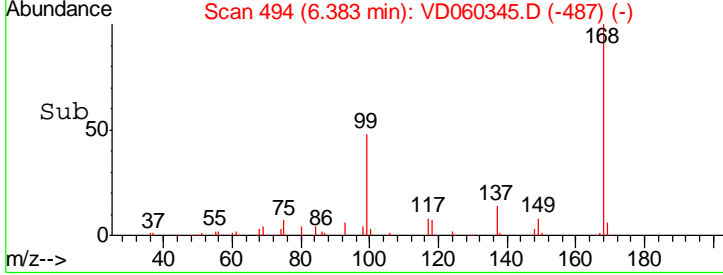
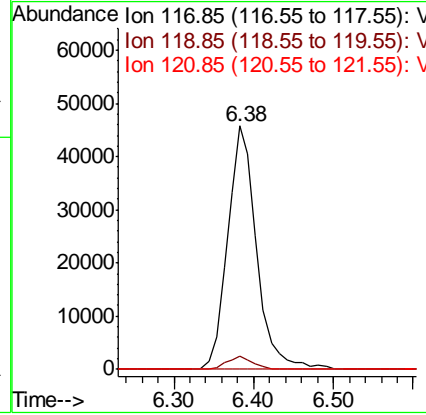
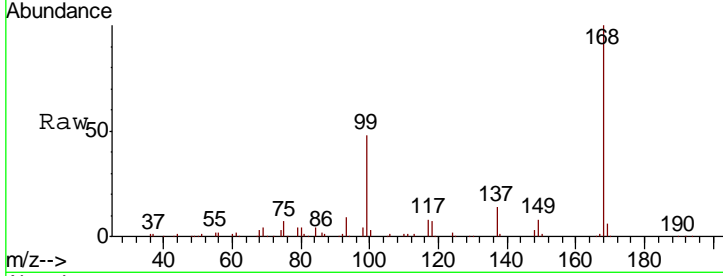




#38
 Carbon Tetrachloride
 Concen: 6.307 ug/l
 RT: 6.38 min Scan# 494
 Delta R.T. -0.13 min
 Lab File: VD060345.D
 Acq: 12 Nov 2018 18:50

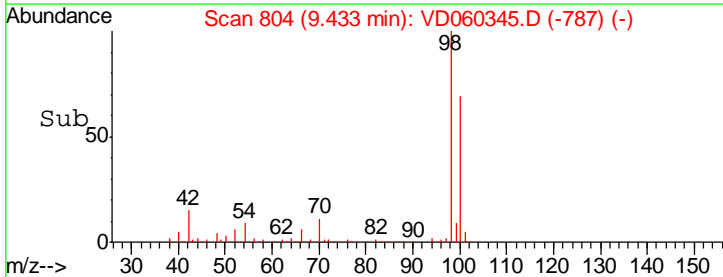
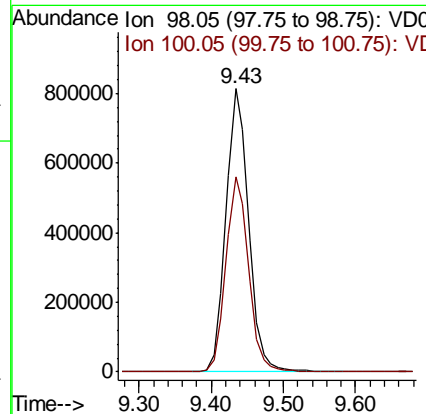
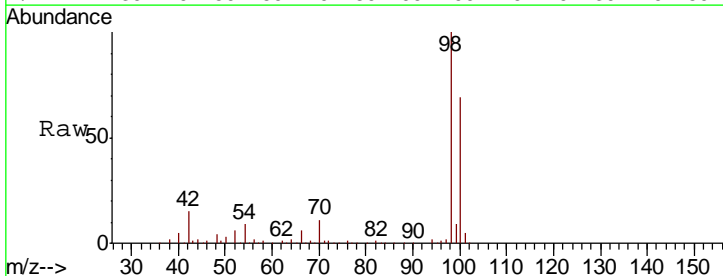
Instrument :
 MSVOA_D
 ClientSampleID :
 TP-4-S

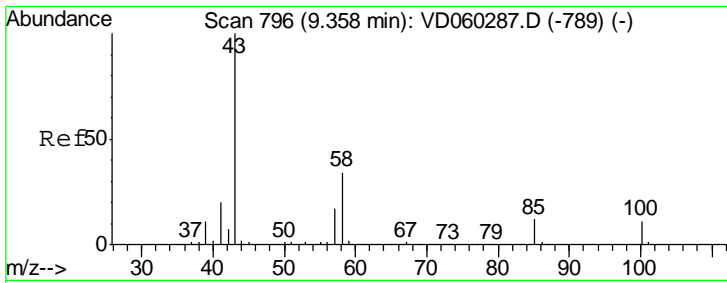
Tgt Ion	Resp	Lower	Upper
117	115937		
119	5.5	76.6	115.0#
121	0.0	24.3	36.5#



#50
 Toluene-d8
 Concen: N.D. ug/l
 RT: 9.43 min Scan# 804
 Delta R.T. -0.03 min
 Lab File: VD060345.D
 Acq: 12 Nov 2018 18:50

Tgt Ion	Resp	Lower	Upper
98	1762528		
100	68.8	55.2	82.8

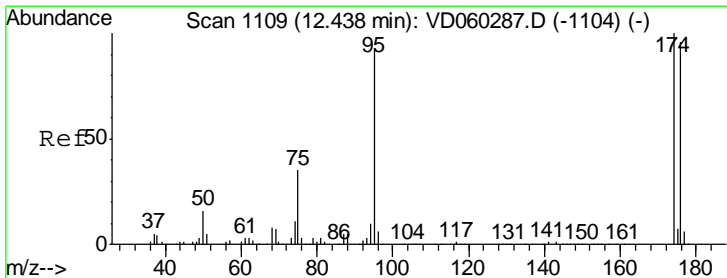
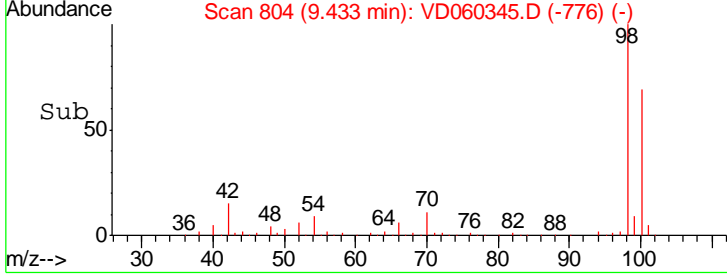
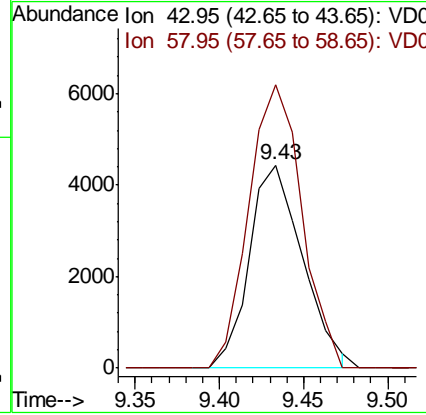
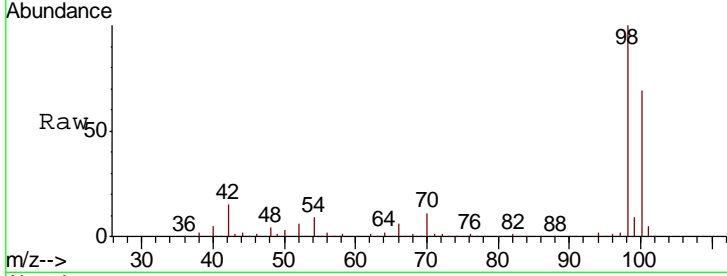




#51
 4-Methyl-2-Pentanone
 Concen: 1.304 ug/l
 RT: 9.43 min Scan# 804
 Delta R.T. 0.08 min
 Lab File: VD060345.D
 Acq: 12 Nov 2018 18:50

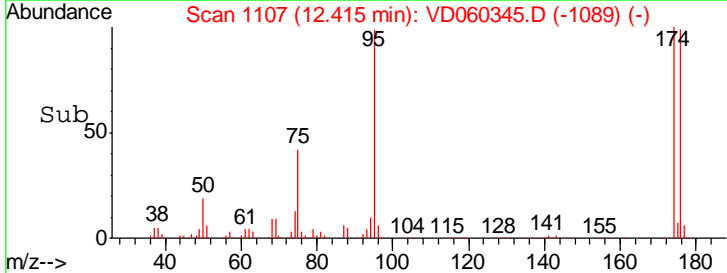
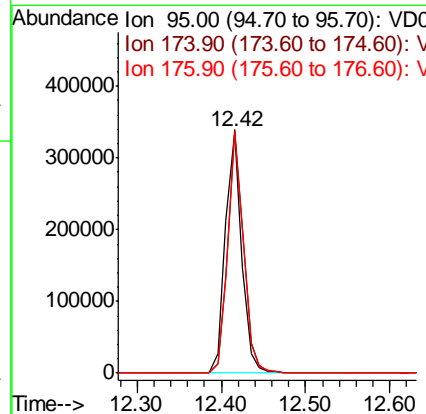
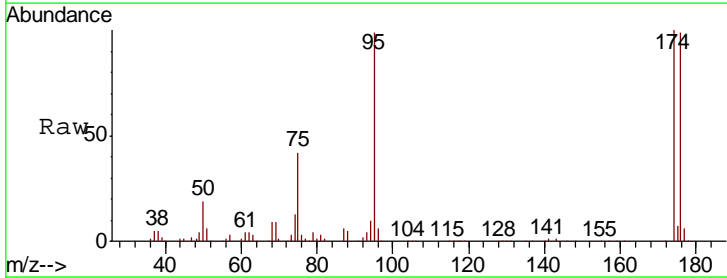
Instrument :
 MSVOA_D
 ClientSampled :
 TP-4-S

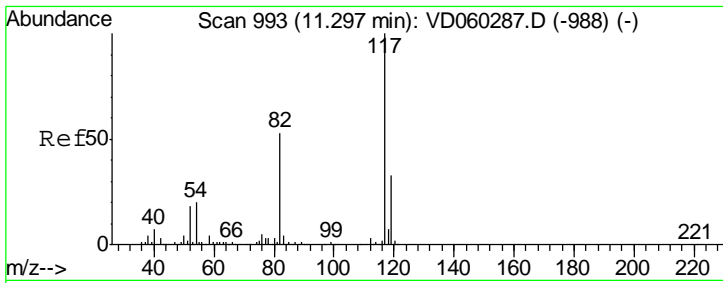
Tgt Ion: 43 Resp: 9723
 Ion Ratio Lower Upper
 43 100
 58 139.6 26.1 39.1#



#62
 4-Bromofluorobenzene
 Concen: N.D. ug/l
 RT: 12.42 min Scan# 1107
 Delta R.T. -0.02 min
 Lab File: VD060345.D
 Acq: 12 Nov 2018 18:50

Tgt Ion: 95 Resp: 455030
 Ion Ratio Lower Upper
 95 100
 174 100.8 0.0 160.8
 176 99.7 0.0 154.6

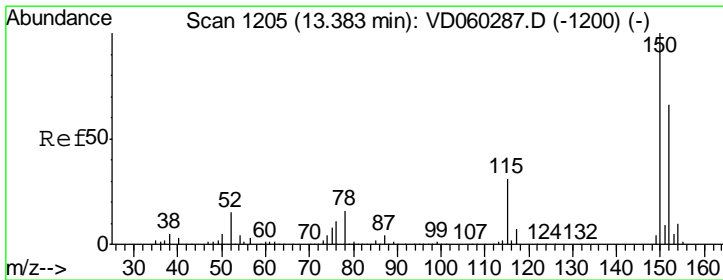
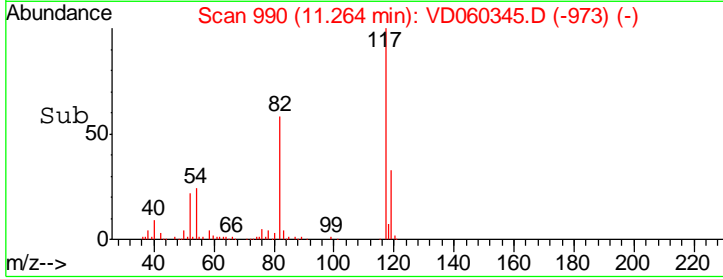
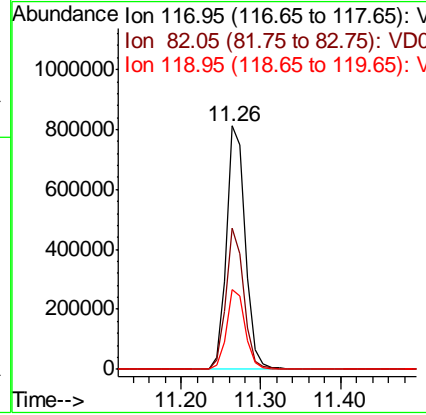
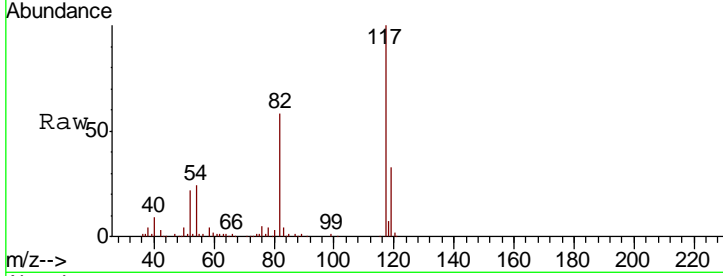




#63
 Chlorobenzene-d5
 Concen: 50.000 ug/l
 RT: 11.26 min Scan# 990
 Delta R.T. -0.03 min
 Lab File: VD060345.D
 Acq: 12 Nov 2018 18:50

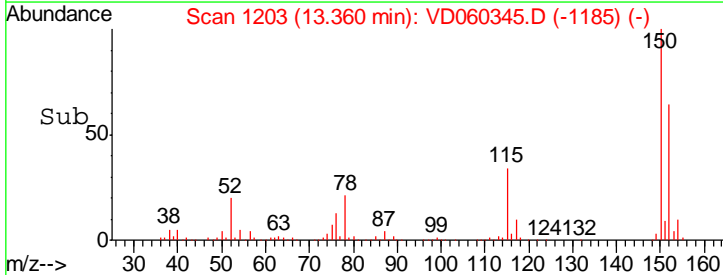
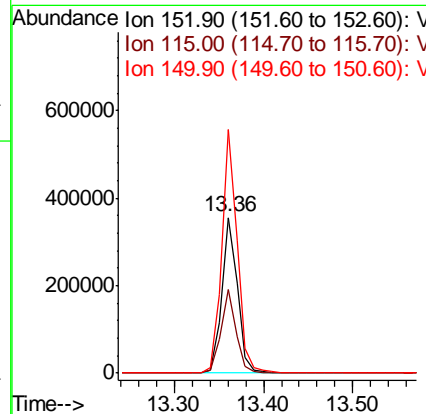
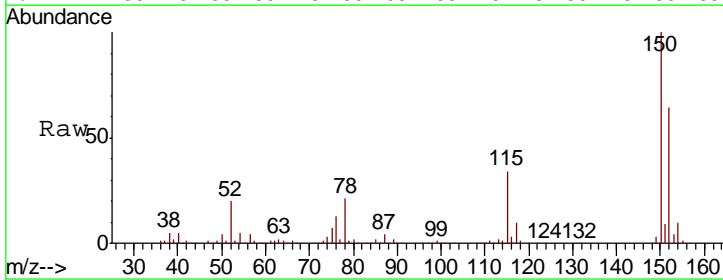
Instrument :
 MSVOA_D
 ClientSampled :
 TP-4-S

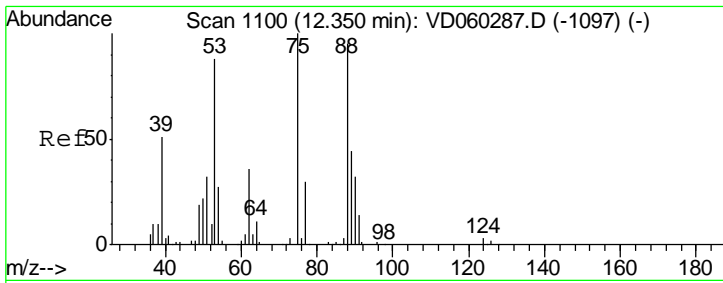
Tgt Ion	Resp	Lower	Upper
117	1360158		
82	58.2	43.7	65.5
119	32.8	26.1	39.1



#72
 1,4-Dichlorobenzene-d4
 Concen: 50.000 ug/l
 RT: 13.36 min Scan# 1203
 Delta R.T. -0.02 min
 Lab File: VD060345.D
 Acq: 12 Nov 2018 18:50

Tgt Ion	Resp	Lower	Upper
152	436182		
115	53.4	24.1	72.3
150	156.4	0.0	310.6

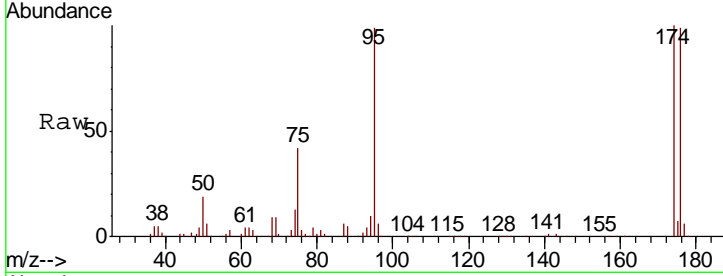




#81
 trans-1,4-Dichloro-2-butene
 Concen: 130.013 ug/l
 RT: 12.42 min Scan# 1107
 Delta R.T. 0.07 min
 Lab File: VD060345.D
 Acq: 12 Nov 2018 18:50

Instrument :
 MSVOA_D
 ClientSampled :
 TP-4-S

Tgt Ion	Resp	Lower	Upper
75	193133		
53	0.0	68.6	103.0#
89	0.0	34.1	51.1#



Abundance Ion 75.00 (74.70 to 75.70): VDC
 Ion 53.00 (52.70 to 53.70): VDC
 Ion 89.00 (88.70 to 89.70): VDC

