

Data Path : Z:\VOASRV\HPCHEM1\MSVOA D\DATA\VD111218\  
 Data File : VD060350.D  
 Acq On : 12 Nov 2018 21:12  
 Operator : JC/SY  
 Sample : J5908-19  
 Misc : 4.23g/5ml/MSVOA D/SOIL  
 ALS Vial : 23 Sample Multiplier: 1

Instrument :  
 MSVOA\_D  
 ClientSampleId :  
 SR-8

Integration Parameters: RTEINT.P  
 Integrator: RTE  
 Smoothing : ON Filtering: 5  
 Sampling : 1 Min Area: 3 % of largest Peak  
 Start Thrs: 0.2 Max Peaks: 100  
 Stop Thrs : 0 Peak Location: TOP

If leading or trailing edge < 100 prefer < Baseline drop else tangent >  
 Peak separation: 5

Method : Z:\VOASRV\HPCHEM1\MSVOA\_D\METHOD\82D110618S.M  
 Title : SW846 8260

Signal : TIC

peak #	R.T. min	first scan	max scan	last scan	PK TY	peak height	corr. area	corr. % max.	% of total
1	3.146	158	165	173	rBV	19790	68847	1.16%	0.191%
2	3.707	216	222	245	rVB	238882	767026	12.91%	2.130%
3	6.305	480	486	490	rBV	996058	2518281	42.40%	6.993%
4	6.384	490	494	514	rVB	1692235	4481950	75.46%	12.445%
5	6.767	527	533	547	rBV	688333	1708205	28.76%	4.743%
6	7.417	593	599	617	rBV	2151190	5373997	90.47%	14.922%
7	9.434	799	804	812	rBV	2716877	5939839	100.00%	16.493%
8	10.172	874	879	886	rBV	25658	67535	1.14%	0.188%
9	11.265	986	990	1004	rBV	3184593	5335363	89.82%	14.815%
10	11.944	1056	1059	1069	rVB	1073754	1406412	23.68%	3.905%
11	12.416	1103	1107	1118	rBV	2705315	3681443	61.98%	10.222%
12	13.361	1200	1203	1216	rBV	3738895	4664541	78.53%	12.952%

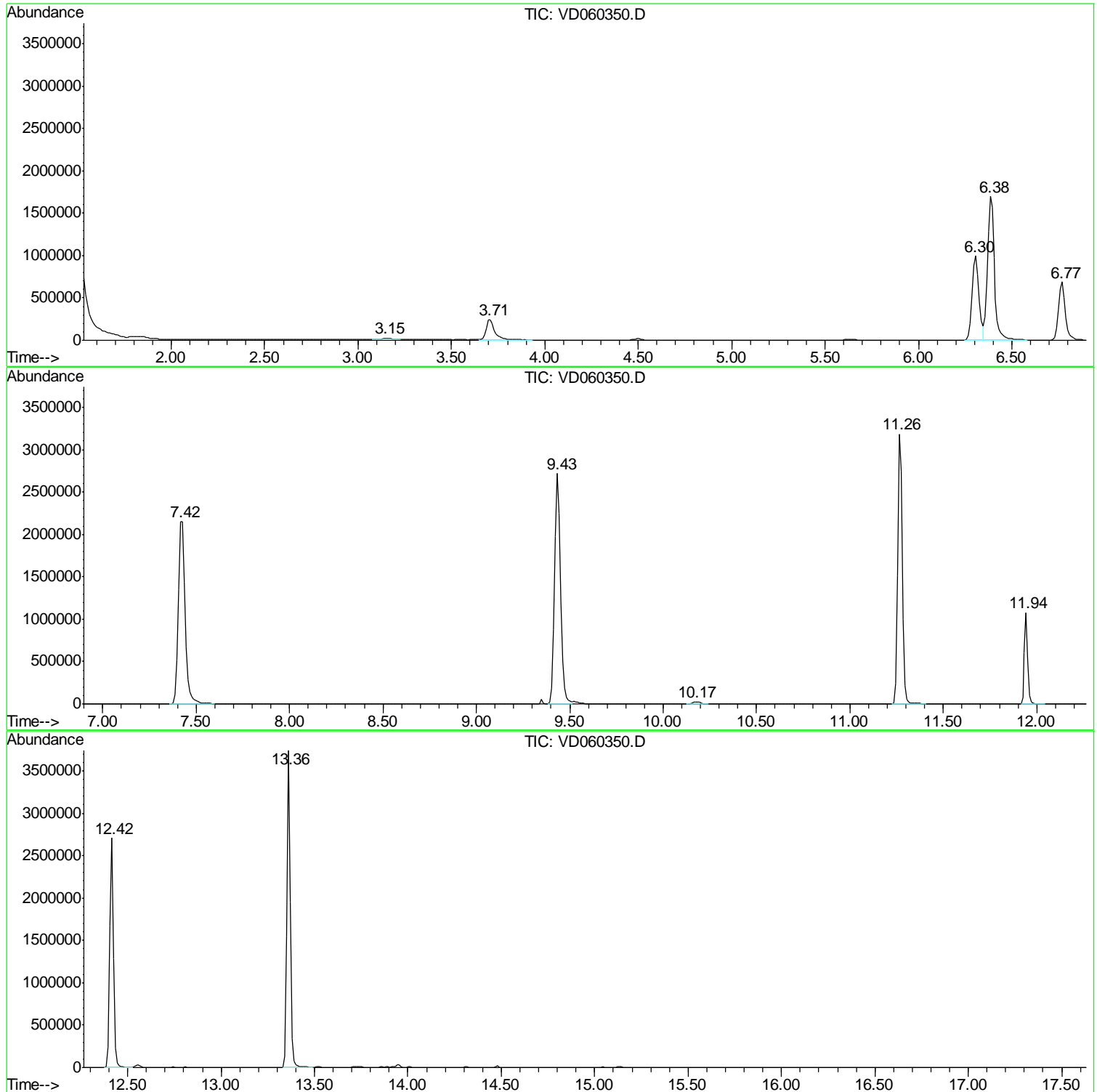
Sum of corrected areas: 36013439

Data Path : Z:\VOASRV\HPCHEM1\MSVOA D\DATA\VD111218\  
Data File : VD060350.D  
Acq On : 12 Nov 2018 21:12  
Operator : JC/SY  
Sample : J5908-19  
Misc : 4.23g/5ml/MSVOA D/SOIL  
ALS Vial : 23 Sample Multiplier: 1

Instrument :  
MSVOA\_D  
ClientSampled :  
SR-8

Quant Method : Z:\VOASRV\HPCHEM1\MSVOA\_D\METHOD\82D110618S.M  
Quant Title : SW846 8260

TIC Library : C:\DATABASE\NIST11.L  
TIC Integration Parameters: LSCINT.P



Data Path : Z:\VOASRV\HPCHEM1\MSVOA\_D\DATA\VD111218\  
Data File : VD060350.D  
Acq On : 12 Nov 2018 21:12  
Operator : JC/SY  
Sample : J5908-19  
Misc : 4.23g/5ml/MSVOA\_D/SOIL  
ALS Vial : 23 Sample Multiplier: 1

Instrument :  
MSVOA\_D  
ClientSampleId :  
SR-8

Quant Method : Z:\VOASRV\HPCHEM1\MSVOA\_D\METHOD\82D110618S.M  
Quant Title : SW846 8260

TIC Library : C:\DATABASE\NIST11.L  
TIC Integration Parameters: LSCINT.P

No Library Search Compounds Detected

\*\*\*\*\*

Data Path : Z:\VOASRV\HPCHEM1\MSVOA\_D\DATA\VD111218\  
Data File : VD060350.D  
Acq On : 12 Nov 2018 21:12  
Operator : JC/SY  
Sample : J5908-19  
Misc : 4.23g/5ml/MSVOA\_D/SOIL  
ALS Vial : 23 Sample Multiplier: 1

Instrument :  
MSVOA\_D  
ClientSampleId :  
SR-8

Quant Method : Z:\VOASRV\HPCHEM1\MSVOA\_D\METHOD\82D110618S.M  
Quant Title : SW846 8260

TIC Library : C:\DATABASE\NIST11.L  
TIC Integration Parameters: LSCINT.P

TIC Top Hit name	RT	EstConc	Units	Response	--Internal Standard--			
					#	RT	Resp	Conc

---