

Data Path : Z:\VOASRV\HPCHEM1\MSVOA D\DATA\VD111219\
 Data File : VD064204.D
 Acq On : 12 Nov 2019 19:00
 Operator : VA/SY
 Sample : K5777-02
 Misc : 7.11G/5.00ml/MSVOA D/SOIL
 ALS Vial : 11 Sample Multiplier: 1

Instrument :
 MSVOA_D
 ClientSampleId :
 AOC-7-WEST-OUTFALL-(10)

Integration Parameters: RTEINT.P
 Integrator: RTE
 Smoothing : ON Filtering: 5
 Sampling : 1 Min Area: 3 % of largest Peak
 Start Thrs: 0.2 Max Peaks: 100
 Stop Thrs : 0 Peak Location: TOP

If leading or trailing edge < 100 prefer < Baseline drop else tangent >
 Peak separation: 5

Method : Z:\VOASRV\HPCHEM1\MSVOA_D\METHOD\82D110819S.M
 Title : SW846 8260

Signal : TIC

peak #	R.T. min	first scan	max scan	last scan	PK TY	peak height	corr. area	corr. % max.	% of total
1	1.950	3	5	18	rVB2	34111	59994	2.04%	0.335%
2	4.167	374	382	393	rBV2	41007	122595	4.18%	0.684%
3	4.403	414	422	430	rBV2	14955	43608	1.49%	0.243%
4	7.220	892	901	915	rVB2	23479	68849	2.35%	0.384%
5	7.920	1008	1020	1025	rBV	369750	901104	30.71%	5.027%
6	7.985	1025	1031	1042	rVB	693233	1529762	52.14%	8.533%
7	8.338	1080	1091	1103	rBV	332174	755415	25.75%	4.214%
8	8.867	1172	1181	1191	rBV	937331	1918144	65.37%	10.700%
9	10.344	1423	1432	1441	rBV	1497599	2681001	91.37%	14.955%
10	10.726	1489	1497	1504	rBV2	20675	41905	1.43%	0.234%
11	11.649	1647	1654	1666	rBV	1563724	2716273	92.57%	15.152%
12	11.855	1683	1689	1695	rBV5	18363	36856	1.26%	0.206%
13	12.008	1710	1715	1720	rVB3	19412	33492	1.14%	0.187%
14	12.491	1790	1797	1804	rBV2	93937	165332	5.63%	0.922%
15	12.638	1815	1822	1830	rBV	1482783	2497841	85.13%	13.933%
16	13.043	1886	1891	1894	rBV3	75631	136734	4.66%	0.763%
17	13.449	1957	1960	1966	rVB5	22234	35762	1.22%	0.199%
18	13.585	1975	1983	1991	rBV	1777962	2934165	100.00%	16.367%
19	13.785	2013	2017	2021	rBV4	23714	37722	1.29%	0.210%
20	14.279	2099	2101	2109	rVB6	21043	36093	1.23%	0.201%
21	14.473	2127	2134	2139	rVB	116346	207238	7.06%	1.156%
22	14.726	2173	2177	2183	rBV6	24288	44028	1.50%	0.246%
23	14.890	2199	2205	2212	rBV	280802	467499	15.93%	2.608%
24	14.996	2217	2223	2228	rBV4	59377	101435	3.46%	0.566%
25	15.114	2238	2243	2249	rVB4	41392	68444	2.33%	0.382%
26	15.185	2250	2255	2261	rVB2	44725	74023	2.52%	0.413%
27	15.302	2270	2275	2280	rVB3	69770	116164	3.96%	0.648%
28	15.414	2288	2294	2298	rBV	29055	48510	1.65%	0.271%
29	15.561	2314	2319	2325	rVB3	25955	46931	1.60%	0.262%

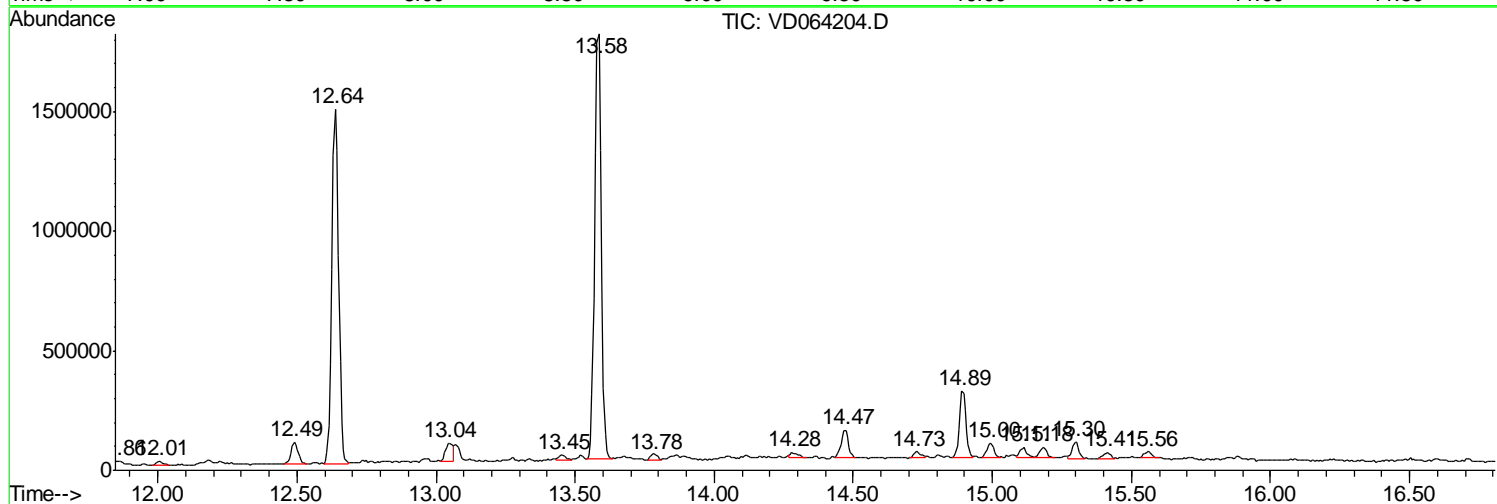
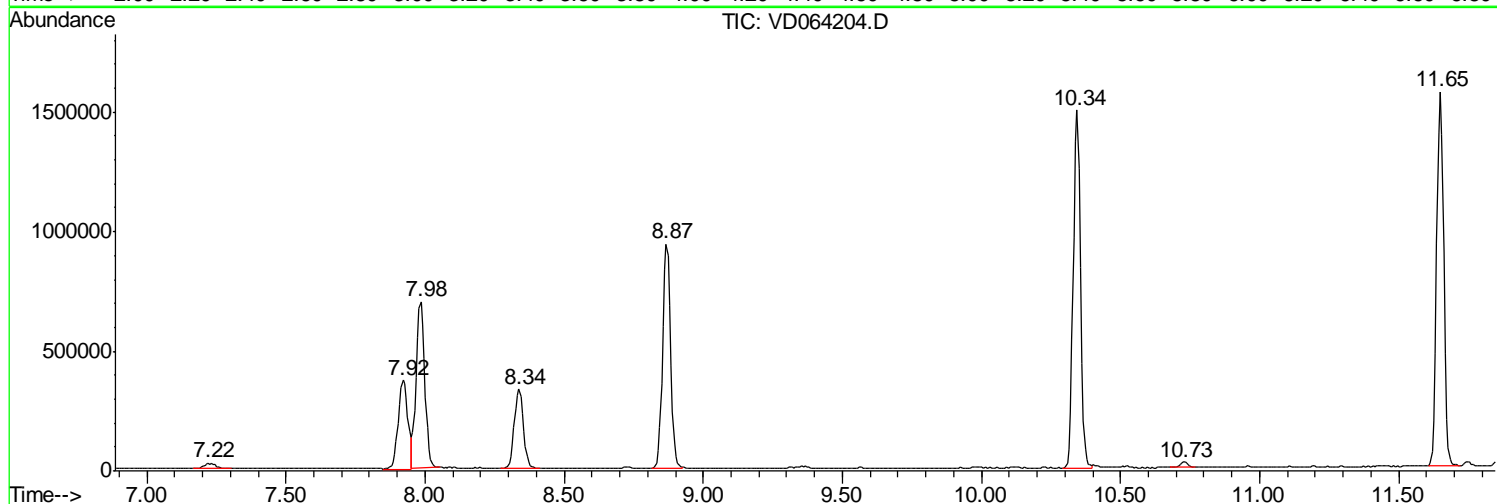
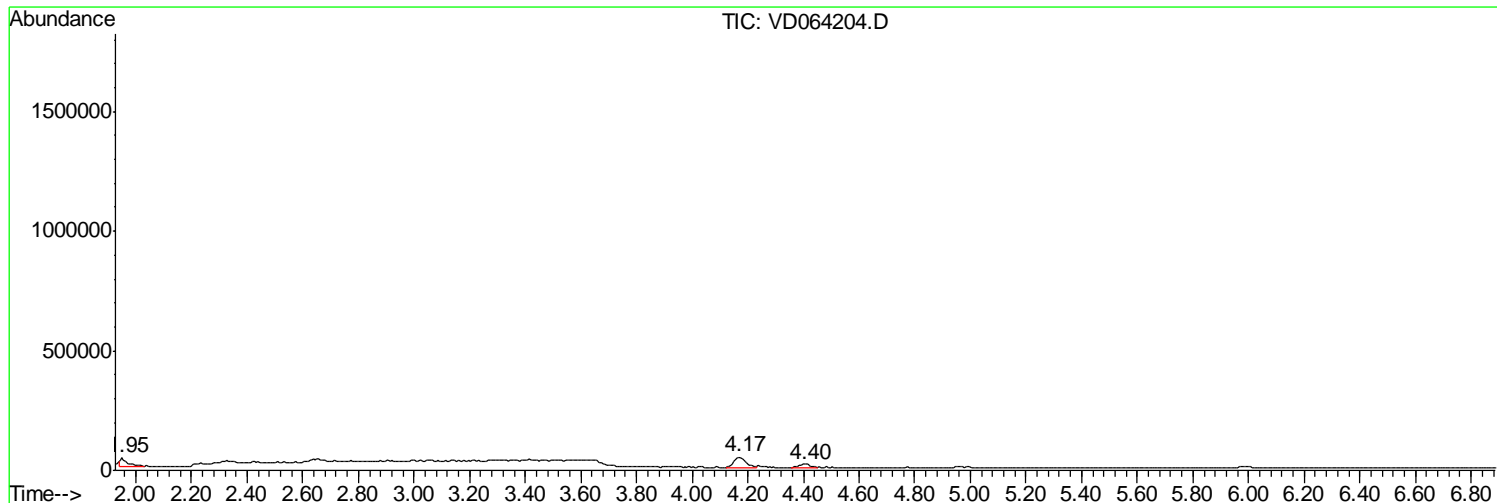
Sum of corrected areas: 17926919

Data Path : Z:\VOASRV\HPCHEM1\MSVOA D\DATA\VD111219\
 Data File : VD064204.D
 Acq On : 12 Nov 2019 19:00
 Operator : VA/SY
 Sample : K5777-02
 Misc : 7.11G/5.00ml/MSVOA D/SOIL
 ALS Vial : 11 Sample Multiplier: 1

Instrument :
 MSVOA_D
ClientSampleId :
 AOC-7-WEST-OUTFALL-(10)

Quant Method : Z:\VOASRV\HPCHEM1\MSVOA_D\METHOD\82D110819S.M
 Quant Title : SW846 8260

TIC Library : C:\DATABASE\NIST11.L
 TIC Integration Parameters: LSCINT.P



Data Path : Z:\VOASRV\HPCHEM1\MSVOA D\DATA\VD111219\
 Data File : VD064204.D
 Acq On : 12 Nov 2019 19:00
 Operator : VA/SY
 Sample : K5777-02
 Misc : 7.11G/5.00ml/MSVOA D/SOIL
 ALS Vial : 11 Sample Multiplier: 1

Instrument :
 MSVOA_D
 ClientSampleID :
 AOC-7-WEST-OUTFALL-(10)

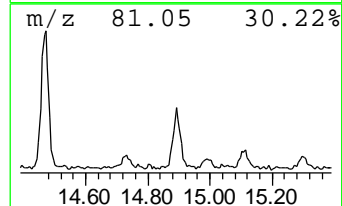
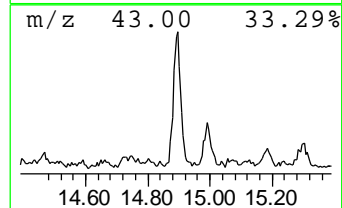
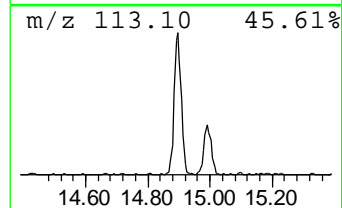
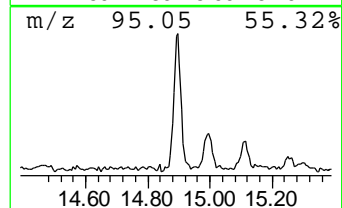
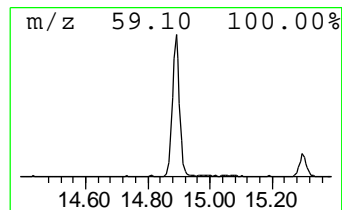
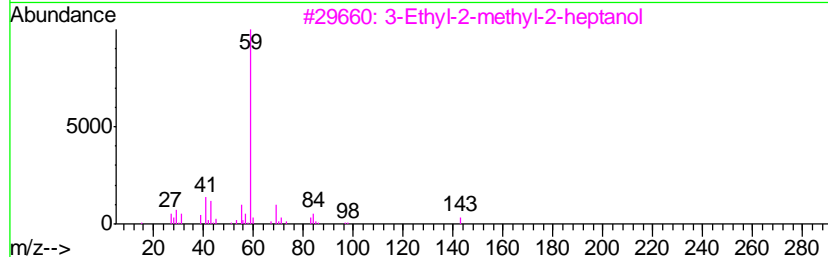
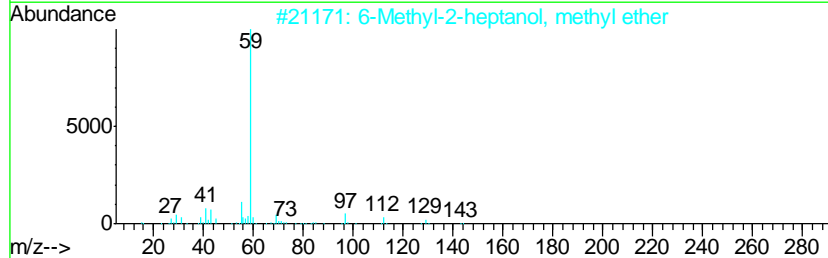
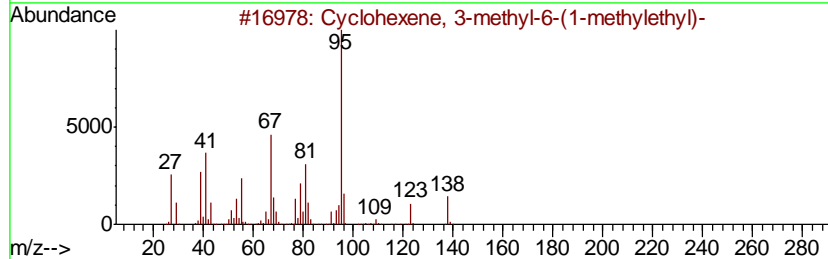
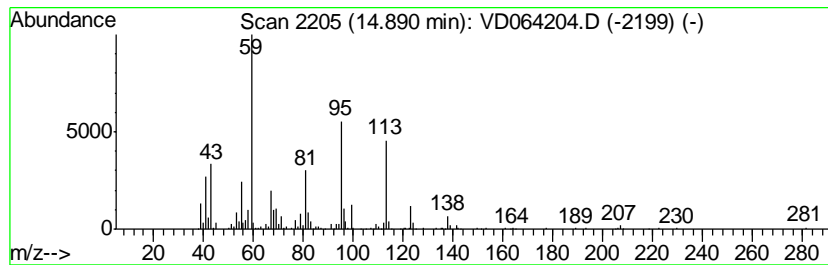
Quant Method : Z:\VOASRV\HPCHEM1\MSVOA_D\METHOD\82D110819S.M
 Quant Title : SW846 8260

TIC Library : C:\DATABASE\NIST11.L
 TIC Integration Parameters: LSCINT.P

 Peak Number 1 unknown14.89 Concentration Rank 1

R.T.	EstConc	Area	Relative to ISTD	R.T.
14.89	7.97 ug/l	467499	1,4-Dichlorobenzene-d4	13.58

Hit#	of	Tentative ID	MW	MolForm	CAS#	Qual
1	5	Cyclohexene, 3-methyl-6-(1-methyl-...	138	C10H18	005256-65-5	22
2		6-Methyl-2-heptanol, methyl ether	144	C9H20O	1000365-52-0	22
3		3-Ethyl-2-methyl-2-heptanol	158	C10H22O	019780-59-7	22
4		Cyclohexene, 4-methyl-1-(1-methyl-...	138	C10H18	000500-00-5	20
5		Cyclohexane, 1-methyl-4-(1-methyl-...	138	C10H18	001124-27-2	15



Data Path : Z:\VOASRV\HPCHEM1\MSVOA_D\DATA\VD111219\
Data File : VD064204.D
Acq On : 12 Nov 2019 19:00
Operator : VA/SY
Sample : K5777-02
Misc : 7.11G/5.00ml/MSVOA_D/SOIL
ALS Vial : 11 Sample Multiplier: 1

Instrument :
MSVOA_D
ClientSampleId :
AOC-7-WEST-OUTFALL-(10)

Quant Method : Z:\VOASRV\HPCHEM1\MSVOA_D\METHOD\82D110819S.M
Quant Title : SW846 8260

TIC Library : C:\DATABASE\NIST11.L
TIC Integration Parameters: LSCINT.P

TIC Top Hit name	RT	EstConc	Units	Response	--Internal Standard--			
					#	RT	Resp	Conc
unknown14.89	14.89	8.0	ug/l	467499	4	13.58	2934170	50.0