

Data Path : Z:\VOASRV\HPCHEM1\MSVOA\_D\DATA\VD111418\  
 Data File : VD060381.D  
 Acq On : 14 Nov 2018 16:13  
 Operator : JC/SY  
 Sample : J5930-01  
 Misc : 6.61g/5ml/MSVOA\_D/SOIL  
 ALS Vial : 13 Sample Multiplier: 1

Instrument :  
 MSVOA\_D  
 ClientSampleId :  
 32727-45914-21716

Integration Parameters: RTEINT.P  
 Integrator: RTE  
 Smoothing : ON  
 Sampling : 1  
 Start Thrs: 0.2  
 Stop Thrs : 0

Filtering: 5  
 Min Area: 3 % of largest Peak  
 Max Peaks: 100  
 Peak Location: TOP

If leading or trailing edge < 100 prefer < Baseline drop else tangent >  
 Peak separation: 5

Method : Z:\VOASRV\HPCHEM1\MSVOA\_D\METHOD\82D110618S.M  
 Title : SW846 8260

Signal : TIC

peak #	R.T. min	first scan	max scan	last scan	PK TY	peak height	corr. area	corr. % max.	% of total
1	1.946	39	43	64	rBV	2144818	5565498	9.04%	1.867%
2	6.295	478	485	489	rBV	518187	1370712	2.23%	0.460%
3	6.374	489	493	508	rVB	695624	1936644	3.14%	0.650%
4	6.758	526	532	542	rBV	608742	1627951	2.64%	0.546%
5	7.407	592	598	615	rBV	979451	2506443	4.07%	0.841%
6	9.425	793	803	809	rBV	1030126	2444024	3.97%	0.820%
7	9.523	809	813	820	rVB	463606	1048611	1.70%	0.352%
8	11.265	986	990	992	rBV	968818	1894061	3.08%	0.635%
9	11.413	1002	1005	1011	rBV2	320589	691475	1.12%	0.232%
10	11.541	1011	1018	1020	rBV	465347	1179725	1.92%	0.396%
11	11.580	1020	1022	1024	rVV	448803	736630	1.20%	0.247%
12	11.865	1047	1051	1054	rBV3	610924	1581881	2.57%	0.531%
13	11.915	1054	1056	1058	rVV	412494	735487	1.19%	0.247%
14	11.944	1058	1059	1063	rVV2	423274	846151	1.37%	0.284%
15	12.072	1067	1072	1076	rVV3	1415368	3118338	5.06%	1.046%
16	12.190	1076	1084	1087	rVV2	1739210	5354441	8.70%	1.797%
17	12.249	1087	1090	1094	rVV2	1082859	2144016	3.48%	0.719%
18	12.338	1094	1099	1102	rVV2	1244327	3022549	4.91%	1.014%
19	12.397	1102	1105	1110	rVV2	1421158	3327126	5.40%	1.116%
20	12.476	1110	1113	1114	rVV2	499911	838844	1.36%	0.281%
21	12.515	1114	1117	1119	rVV	986826	1917229	3.11%	0.643%
22	12.564	1119	1122	1129	rVV3	2129669	4021605	6.53%	1.349%
23	12.672	1129	1133	1137	rVV3	1015439	2635168	4.28%	0.884%
24	12.771	1137	1143	1145	rVV3	2146903	6555301	10.65%	2.199%
25	12.810	1145	1147	1150	rVV2	2301117	4192946	6.81%	1.407%
26	12.869	1150	1153	1155	rVV2	788687	1838477	2.99%	0.617%
27	12.909	1155	1157	1158	rVV	850584	1167473	1.90%	0.392%
28	12.948	1158	1161	1164	rVV3	1821105	4476872	7.27%	1.502%
29	13.007	1164	1167	1168	rVV2	1824824	3531371	5.73%	1.185%
30	13.036	1168	1170	1173	rVV	5793556	10159893	16.50%	3.409%
31	13.095	1173	1176	1181	rVV4	2420155	6669386	10.83%	2.238%
32	13.164	1181	1183	1185	rVV	1889651	3395919	5.51%	1.139%
33	13.214	1185	1188	1192	rVV3	2942844	7973258	12.95%	2.675%
34	13.273	1192	1194	1196	rVV2	3180838	5972283	9.70%	2.004%

Data Path : Z:\VOASRV\HPCHEM1\MSVOA\_D\DATA\VD111418\  
 Data File : VD060381.D  
 Acq On : 14 Nov 2018 16:13  
 Operator : JC/SY  
 Sample : J5930-01  
 Misc : 6.61g/5ml/MSVOA\_D/SOIL  
 ALS Vial : 13 Sample Multiplier: 1

Instrument :  
 MSVOA\_D  
 ClientSampleId :  
 32727-45914-21716

Integration Parameters: RTEINT.P  
 Integrator: RTE  
 Smoothing : ON  
 Sampling : 1  
 Start Thrs: 0.2  
 Stop Thrs : 0

Filtering: 5  
 Min Area: 3 % of largest Peak  
 Max Peaks: 100  
 Peak Location: TOP

If leading or trailing edge < 100 prefer < Baseline drop else tangent >  
 Peak separation: 5

Method : Z:\VOASRV\HPCHEM1\MSVOA\_D\METHOD\82D110618S.M  
 Title : SW846 8260

35	13.312	1196	1198	1200	rVV2	2382879	4334237	7.04%	1.454%
36	13.351	1200	1202	1207	rVV3	3604996	9865783	16.02%	3.310%
37	13.420	1207	1209	1211	rVV2	1574034	3212129	5.22%	1.078%
38	13.489	1214	1216	1219	rVV	2417967	4731894	7.68%	1.588%
39	13.538	1219	1221	1223	rVV2	1272905	2772424	4.50%	0.930%
40	13.617	1227	1229	1230	rVV2	1161915	1934608	3.14%	0.649%
41	13.647	1230	1232	1236	rVV3	3662356	8997148	14.61%	3.019%
42	13.725	1236	1240	1243	rVV3	3703699	10725471	17.42%	3.599%
43	13.784	1243	1246	1249	rVV2	3274578	8637098	14.03%	2.898%
44	13.863	1250	1254	1261	rVV4	4002145	14904251	24.20%	5.001%
45	13.952	1261	1263	1267	rVV	2617048	6007303	9.76%	2.016%
46	14.060	1270	1274	1277	rVV4	2074112	5726190	9.30%	1.921%
47	14.119	1277	1280	1281	rVV	3505410	5670675	9.21%	1.903%
48	14.148	1281	1283	1288	rVV3	3398701	8399395	13.64%	2.818%
49	14.217	1288	1290	1292	rVV3	1237923	2471471	4.01%	0.829%
50	14.267	1292	1295	1297	rVV2	2911252	5285639	8.58%	1.773%
51	14.306	1297	1299	1301	rVV2	1299889	2433335	3.95%	0.816%
52	14.345	1301	1303	1307	rVV3	971177	2503365	4.07%	0.840%
53	14.414	1308	1310	1314	rVV2	912677	2528346	4.11%	0.848%
54	14.473	1314	1316	1317	rVV2	1009472	1574763	2.56%	0.528%
55	14.503	1317	1319	1324	rVV	6570303	10404753	16.90%	3.491%
56	14.572	1324	1326	1330	rVV	1438930	2675312	4.34%	0.898%
57	14.641	1330	1333	1343	rVB2	1477765	3235755	5.25%	1.086%
58	14.877	1354	1357	1363	rVB3	416631	953884	1.55%	0.320%
59	15.014	1366	1371	1401	rVB	19758565	61579751	100.00%	20.661%

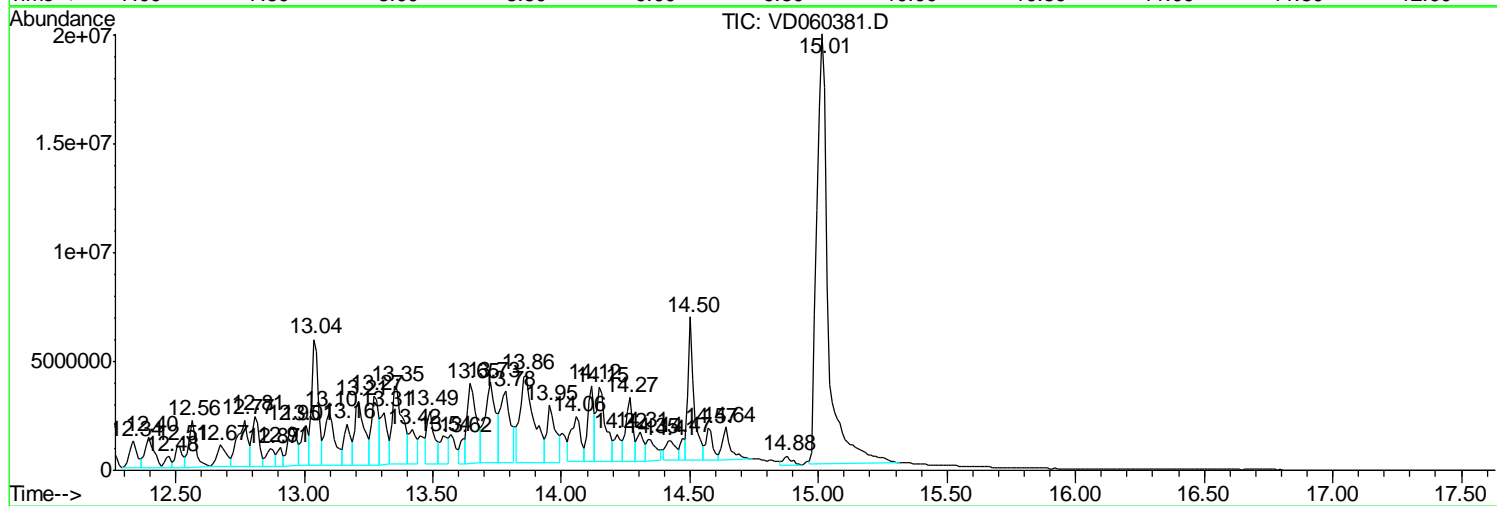
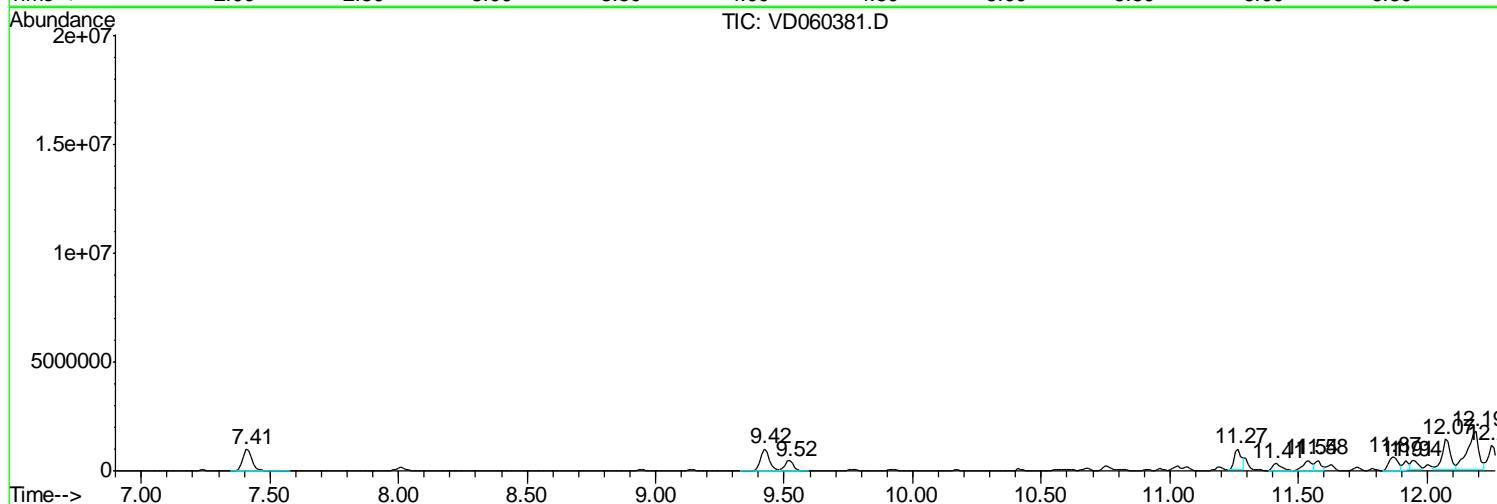
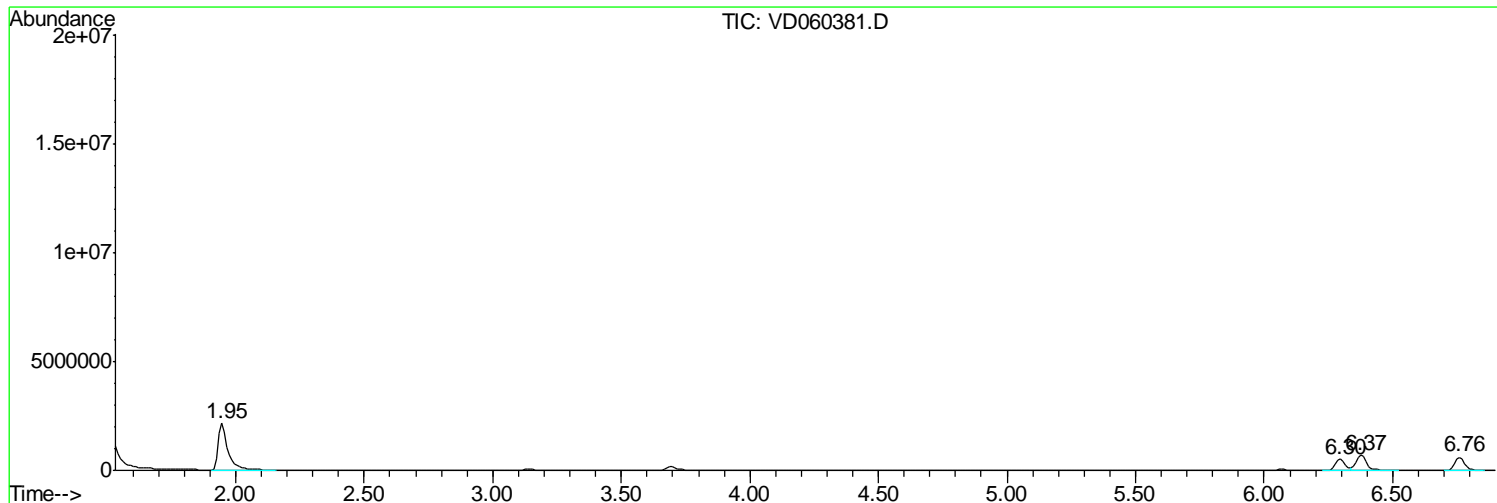
Sum of corrected areas: 298042768

Data Path : Z:\VOASRV\HPCHEM1\MSVOA\_D\DATA\VD111418\  
 Data File : VD060381.D  
 Acq On : 14 Nov 2018 16:13  
 Operator : JC/SY  
 Sample : J5930-01  
 Misc : 6.61g/5ml/MSVOA\_D/SOIL  
 ALS Vial : 13 Sample Multiplier: 1

Instrument :  
 MSVOA\_D  
 ClientSampleId :  
 32727-45914-21716

Quant Method : Z:\VOASRV\HPCHEM1\MSVOA\_D\METHOD\82D110618S.M  
 Quant Title : SW846 8260

TIC Library : C:\DATABASE\NIST11.L  
 TIC Integration Parameters: LSCINT.P



Data Path : Z:\VOASRV\HPCHEM1\MSVOA\_D\DATA\VD111418\  
 Data File : VD060381.D  
 Acq On : 14 Nov 2018 16:13  
 Operator : JC/SY  
 Sample : J5930-01  
 Misc : 6.61g/5ml/MSVOA\_D/SOIL  
 ALS Vial : 13 Sample Multiplier: 1

Instrument :  
 MSVOA\_D  
 ClientSampleID :  
 32727-45914-21716

Quant Method : Z:\VOASRV\HPCHEM1\MSVOA\_D\METHOD\82D110618S.M  
 Quant Title : SW846 8260

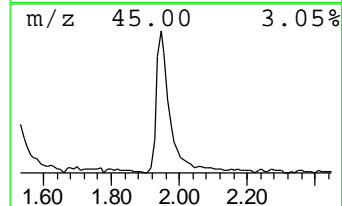
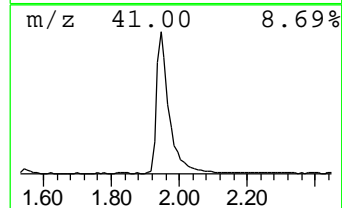
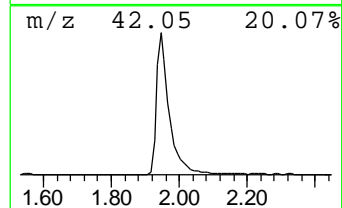
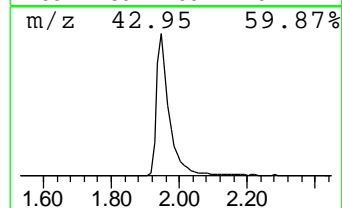
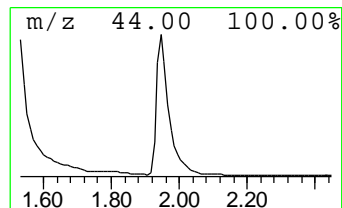
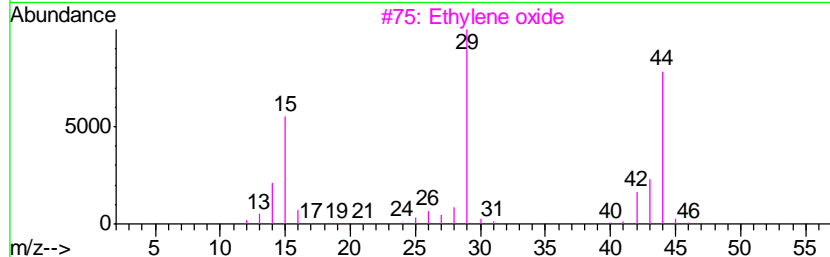
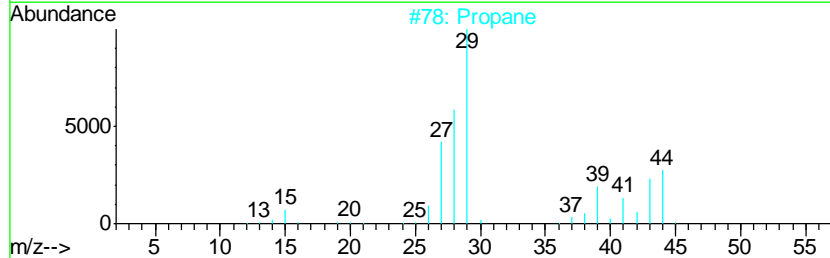
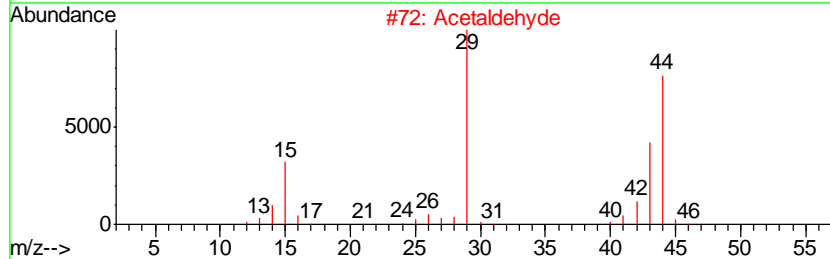
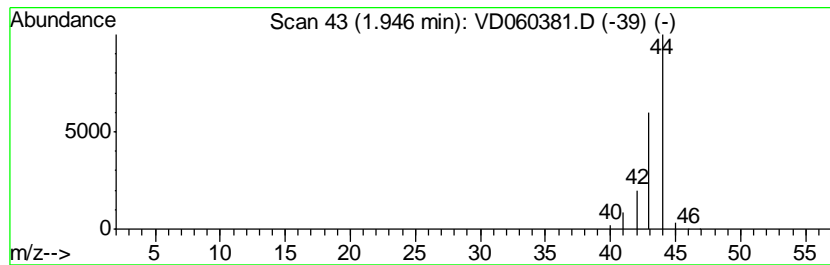
TIC Library : C:\DATABASE\NIST11.L  
 TIC Integration Parameters: LSCINT.P

\*\*\*\*\*  
 Peak Number 1 Acetaldehyde Concentration Rank 2

R.T.	EstConc	Area	Relative to ISTD	R.T.
1.95	143.69 ug/l	5565500	Pentafluorobenzene	6.37

Hit#	of	Tentative ID	MW	MolForm	CAS#	Qual
1	5	Acetaldehyde	44	C2H4O	000075-07-0	74
2		Propane	44	C3H8	000074-98-6	5
3		Ethylene oxide	44	C2H4O	000075-21-8	5
4		Alanine	89	C3H7NO2	000056-41-7	4
5		Ethyne, fluoro-	44	C2HF	002713-09-9	3



Data Path : Z:\VOASRV\HPCHEM1\MSVOA\_D\DATA\VD111418\  
 Data File : VD060381.D  
 Acq On : 14 Nov 2018 16:13  
 Operator : JC/SY  
 Sample : J5930-01  
 Misc : 6.61g/5ml/MSVOA\_D/SOIL  
 ALS Vial : 13 Sample Multiplier: 1

Instrument :  
 MSVOA\_D  
 ClientSampled :  
 32727-45914-21716

Quant Method : Z:\VOASRV\HPCHEM1\MSVOA\_D\METHOD\82D110618S.M  
 Quant Title : SW846 8260

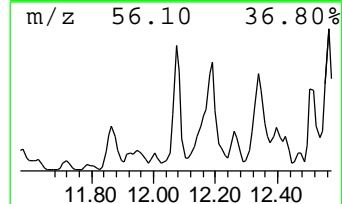
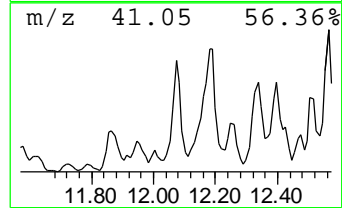
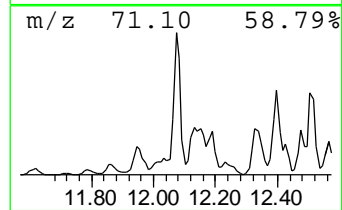
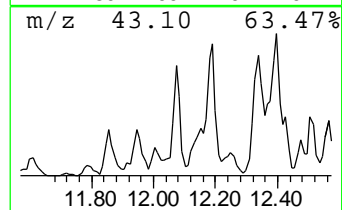
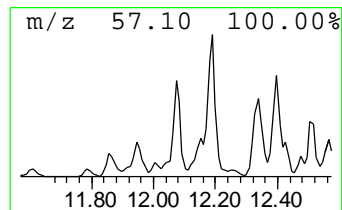
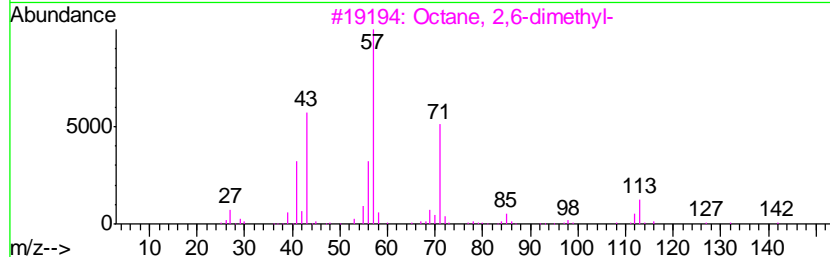
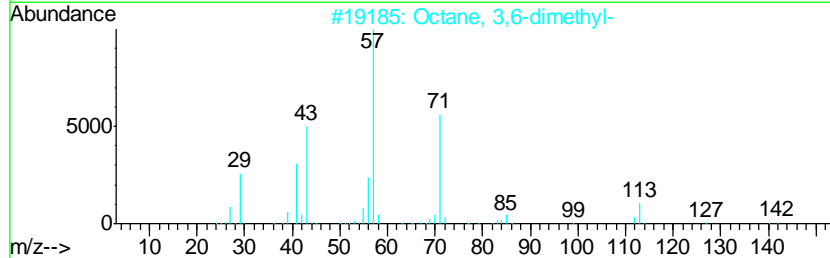
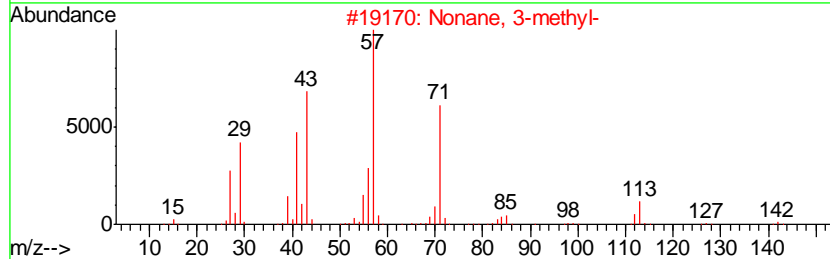
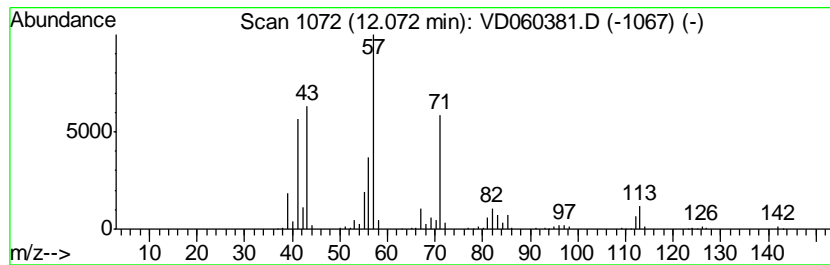
TIC Library : C:\DATABASE\NIST11.L  
 TIC Integration Parameters: LSCINT.P

\*\*\*\*\*  
 Peak Number 2 Nonane, 3-methyl- Concentration Rank 4

R.T.	EstConc	Area	Relative to ISTD	R.T.
12.07	82.32 ug/l	3118340	Chlorobenzene-d5	11.27

Hit#	of	Tentative ID	MW	MolForm	CAS#	Qual
1	5	Nonane, 3-methyl-	142	C10H22	005911-04-6	90
2		Octane, 3,6-dimethyl-	142	C10H22	015869-94-0	81
3		Octane, 2,6-dimethyl-	142	C10H22	002051-30-1	72
4		Octane, 2,3,6-trimethyl-	156	C11H24	062016-33-5	53
5		Octane, 2,3,7-trimethyl-	156	C11H24	062016-34-6	53



Data Path : Z:\VOASRV\HPCHEM1\MSVOA\_D\DATA\VD111418\  
 Data File : VD060381.D  
 Acq On : 14 Nov 2018 16:13  
 Operator : JC/SY  
 Sample : J5930-01  
 Misc : 6.61g/5ml/MSVOA\_D/SOIL  
 ALS Vial : 13 Sample Multiplier: 1

Instrument :  
 MSVOA\_D  
 ClientSampled :  
 32727-45914-21716

Quant Method : Z:\VOASRV\HPCHEM1\MSVOA\_D\METHOD\82D110618S.M  
 Quant Title : SW846 8260

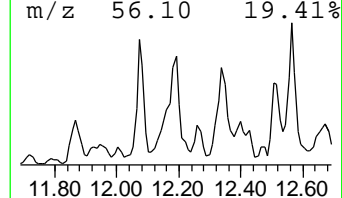
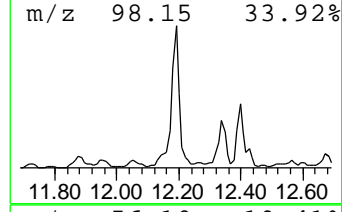
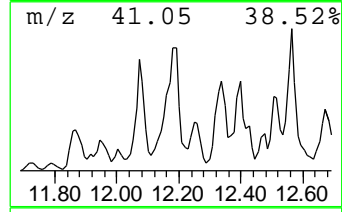
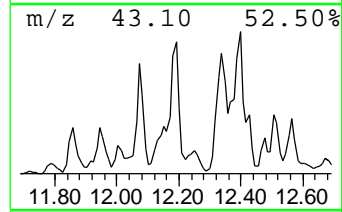
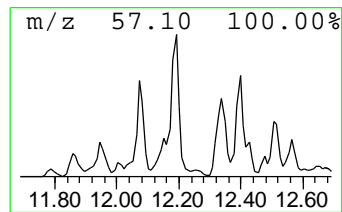
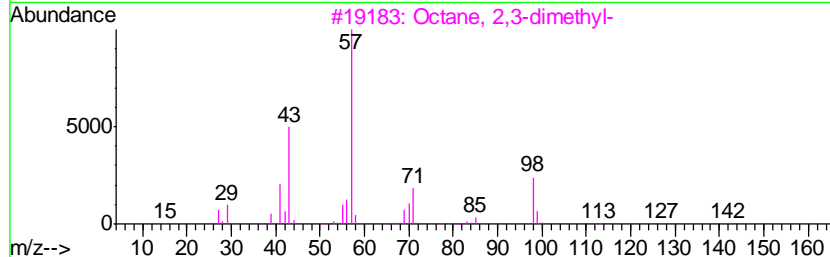
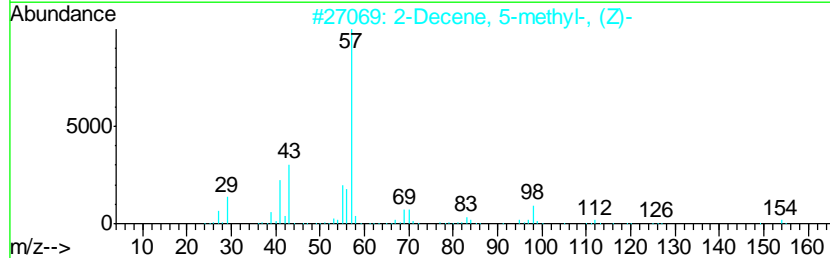
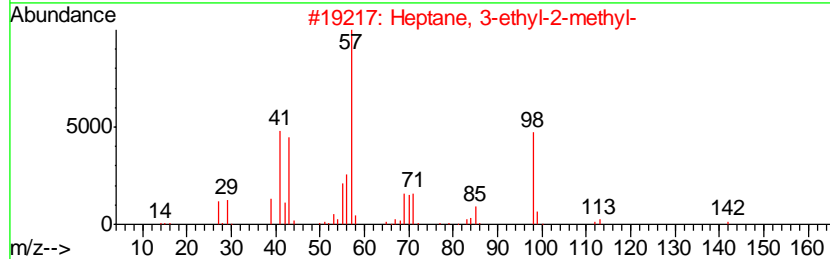
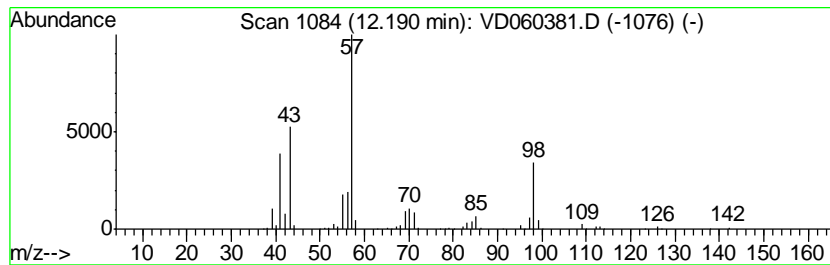
TIC Library : C:\DATABASE\NIST11.L  
 TIC Integration Parameters: LSCINT.P

\*\*\*\*\*  
 Peak Number 3 Heptane, 3-ethyl-2-methyl- Concentration Rank 3

R.T.	EstConc	Area	Relative to ISTD	R.T.
12.19	141.35 ug/l	5354440	Chlorobenzene-d5	11.27

Hit#	of	Tentative ID	MW	MolForm	CAS#	Qual
1	5	Heptane, 3-ethyl-2-methyl-	142	C10H22	014676-29-0	81
2		2-Decene, 5-methyl-, (Z)-	154	C11H22	074645-86-6	78
3		Octane, 2,3-dimethyl-	142	C10H22	007146-60-3	53
4		Heptane, 4-propyl-	142	C10H22	003178-29-8	53
5		Heptane, 4-(1-methylethyl)-	142	C10H22	052896-87-4	53



Data Path : Z:\VOASRV\HPCHEM1\MSVOA\_D\DATA\VD111418\  
 Data File : VD060381.D  
 Acq On : 14 Nov 2018 16:13  
 Operator : JC/SY  
 Sample : J5930-01  
 Misc : 6.61g/5ml/MSVOA\_D/SOIL  
 ALS Vial : 13 Sample Multiplier: 1

Instrument :  
 MSVOA\_D  
 ClientSampleId :  
 32727-45914-21716

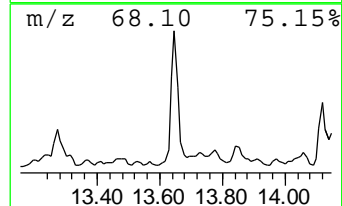
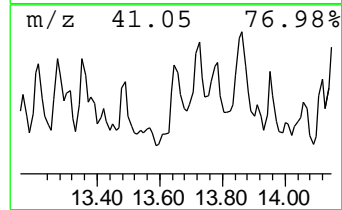
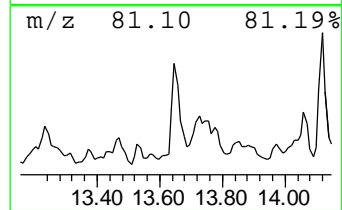
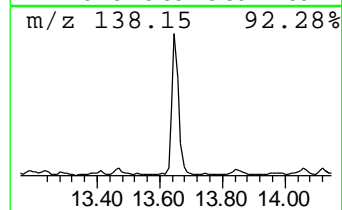
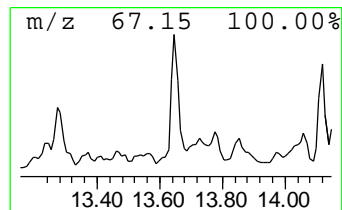
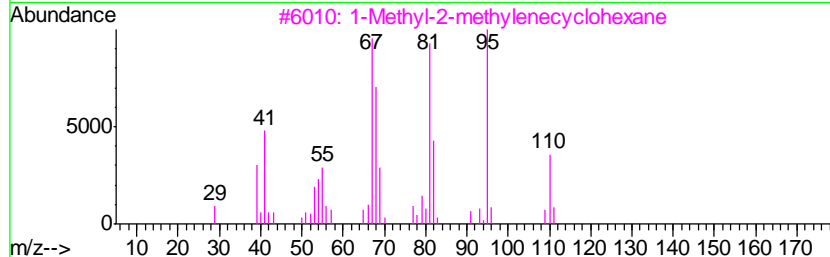
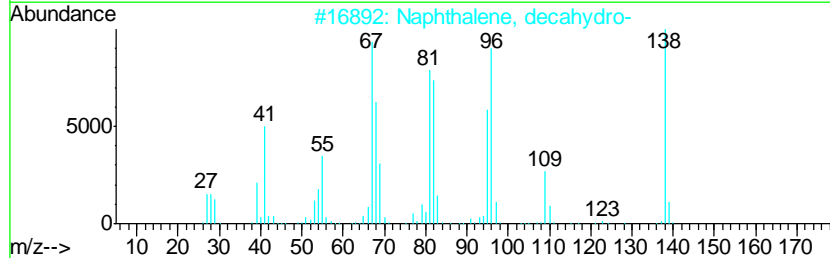
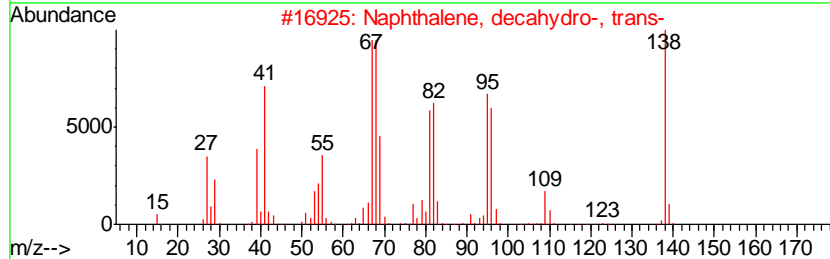
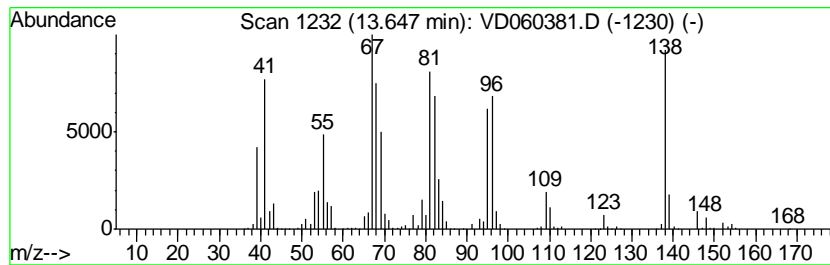
Quant Method : Z:\VOASRV\HPCHEM1\MSVOA\_D\METHOD\82D110618S.M  
 Quant Title : SW846 8260

TIC Library : C:\DATABASE\NIST11.L  
 TIC Integration Parameters: LSCINT.P

\*\*\*\*\*  
 Peak Number 4 Naphthalene, decahydro-, tr... Concentration Rank 8

R.T.	EstConc	Area	Relative to ISTD	R.T.
13.65	45.60 ug/l	8997150	1,4-Dichlorobenzene-d4	13.36

Hit#	of	Tentative ID	MW	MolForm	CAS#	Qual
1	5	Naphthalene, decahydro-, trans-	138	C10H18	000493-02-7	98
2		Naphthalene, decahydro-	138	C10H18	000091-17-8	96
3		1-Methyl-2-methylenecyclohexane	110	C8H14	002808-75-5	83
4		Spiro[4.5]decane	138	C10H18	000176-63-6	81
5		Naphthalene, decahydro-, cis-	138	C10H18	000493-01-6	81



Data Path : Z:\VOASRV\HPCHEM1\MSVOA\_D\DATA\VD111418\  
 Data File : VD060381.D  
 Acq On : 14 Nov 2018 16:13  
 Operator : JC/SY  
 Sample : J5930-01  
 Misc : 6.61g/5ml/MSVOA\_D/SOIL  
 ALS Vial : 13 Sample Multiplier: 1

Instrument :  
 MSVOA\_D  
 ClientSampleID :  
 32727-45914-21716

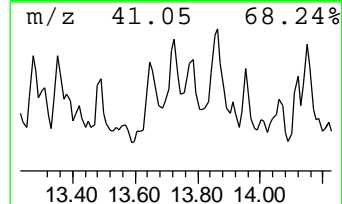
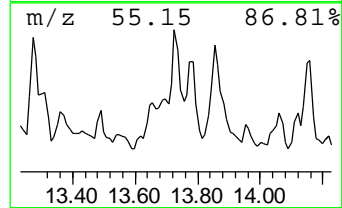
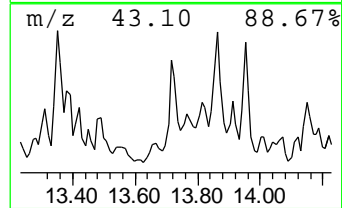
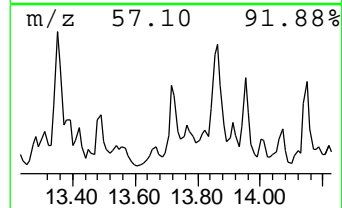
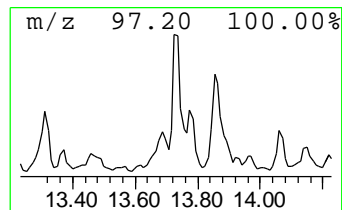
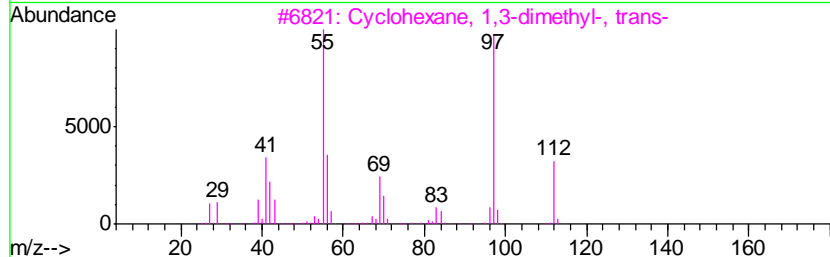
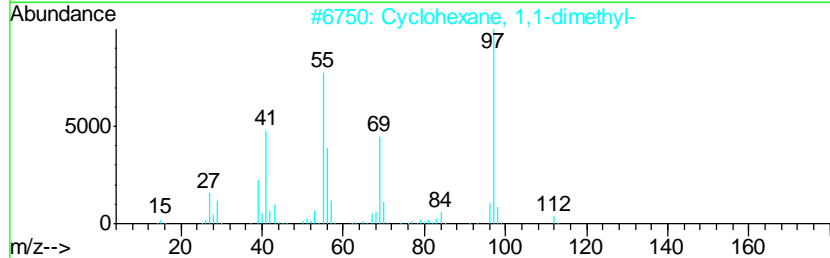
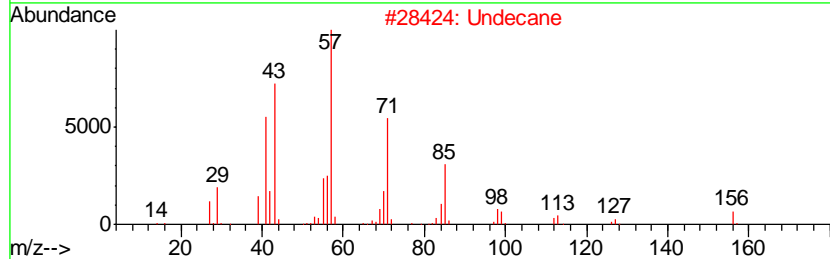
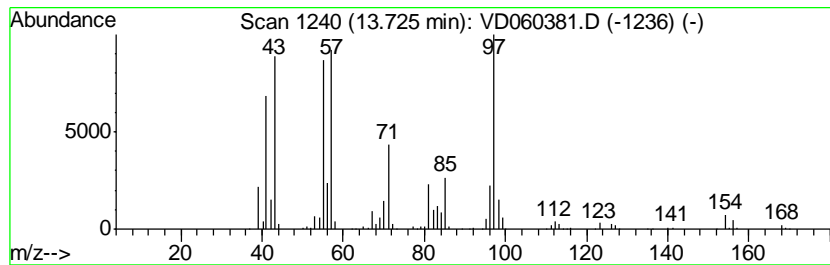
Quant Method : Z:\VOASRV\HPCHEM1\MSVOA\_D\METHOD\82D110618S.M  
 Quant Title : SW846 8260

TIC Library : C:\DATABASE\NIST11.L  
 TIC Integration Parameters: LSCINT.P

\*\*\*\*\*  
 Peak Number 5 Undecane Concentration Rank 6

R.T.	EstConc	Area	Relative to ISTD	R.T.
13.73	54.36 ug/l	10725500	1,4-Dichlorobenzene-d4	13.36

Hit#	of	Tentative ID	MW	MolForm	CAS#	Qual
1	5	Undecane	156	C11H24	001120-21-4	83
2		Cyclohexane, 1,1-dimethyl-	112	C8H16	000590-66-9	46
3		Cyclohexane, 1,3-dimethyl-, trans-	112	C8H16	002207-03-6	43
4		Diethylmalonic acid, monochlorid...	274	C14H23ClO3	1000371-17-9	43
5		Cycloheptane, bromo-	176	C7H13Br	002404-35-5	35





Data Path : Z:\VOASRV\HPCHEM1\MSVOA\_D\DATA\VD111418\  
 Data File : VD060381.D  
 Acq On : 14 Nov 2018 16:13  
 Operator : JC/SY  
 Sample : J5930-01  
 Misc : 6.61g/5ml/MSVOA\_D/SOIL  
 ALS Vial : 13 Sample Multiplier: 1

Instrument :  
 MSVOA\_D  
 ClientSampled :  
 32727-45914-21716

Quant Method : Z:\VOASRV\HPCHEM1\MSVOA\_D\METHOD\82D110618S.M  
 Quant Title : SW846 8260

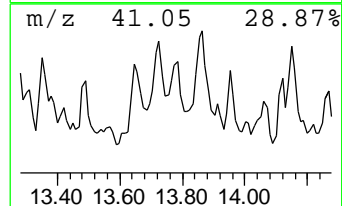
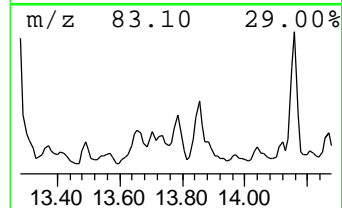
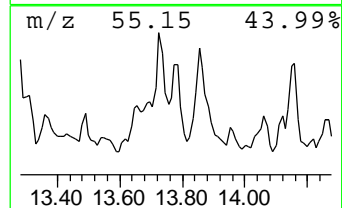
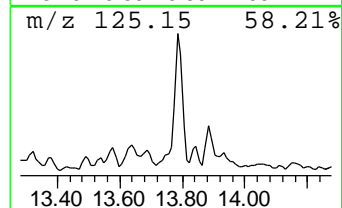
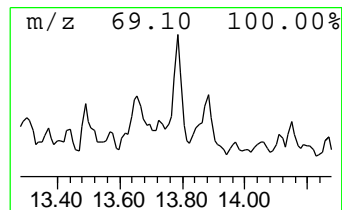
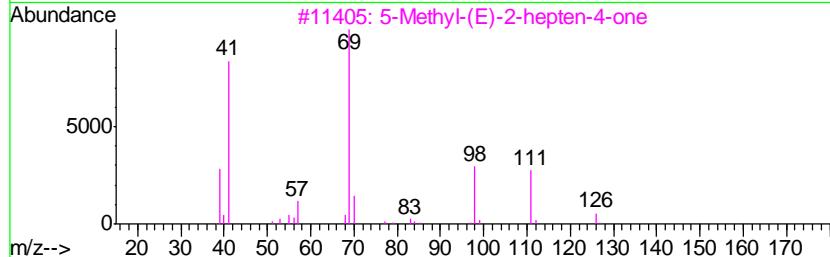
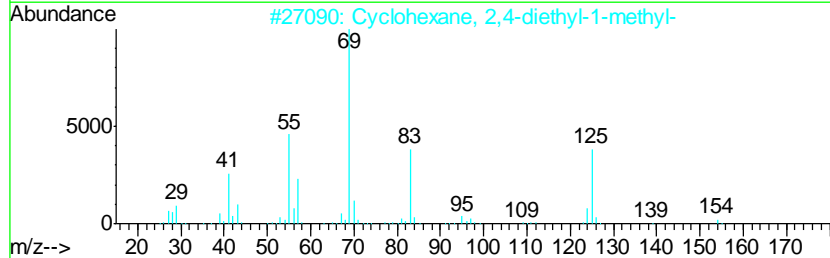
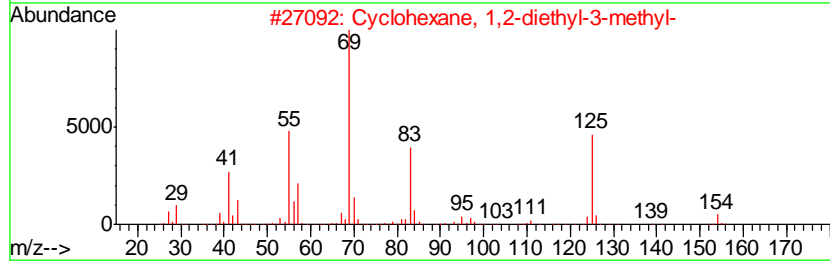
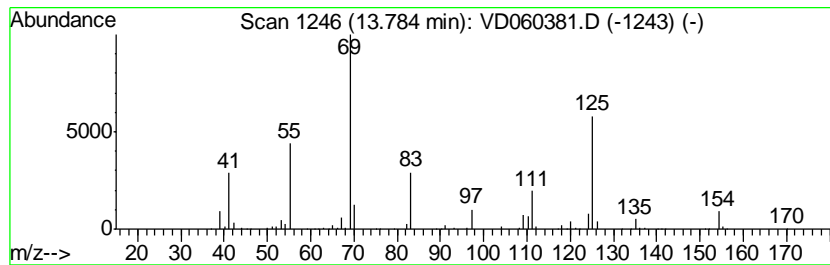
TIC Library : C:\DATABASE\NIST11.L  
 TIC Integration Parameters: LSCINT.P

\*\*\*\*\*  
 Peak Number 6 Cyclohexane, 1,2-diethyl-3-... Concentration Rank 9

R.T.	EstConc	Area	Relative to ISTD	R.T.
13.78	43.77 ug/l	8637100	1,4-Dichlorobenzene-d4	13.36

Hit#	of	Tentative ID	MW	MolForm	CAS#	Qual
1	5	Cyclohexane, 1,2-diethyl-3-methyl-	154	C11H22	061141-80-8	72
2		Cyclohexane, 2,4-diethyl-1-methyl-	154	C11H22	061142-70-9	53
3		5-Methyl-(E)-2-hepten-4-one	126	C8H14O	102322-83-8	43
4		Cyclohexane, 1-ethyl-2-propyl-	154	C11H22	062238-33-9	42
5		1-Undecyn-4-ol	168	C11H20O	022127-86-2	38



Data Path : Z:\VOASRV\HPCHEM1\MSVOA\_D\DATA\VD111418\  
 Data File : VD060381.D  
 Acq On : 14 Nov 2018 16:13  
 Operator : JC/SY  
 Sample : J5930-01  
 Misc : 6.61g/5ml/MSVOA\_D/SOIL  
 ALS Vial : 13 Sample Multiplier: 1

Instrument :  
 MSVOA\_D  
 ClientSampleID :  
 32727-45914-21716

Quant Method : Z:\VOASRV\HPCHEM1\MSVOA\_D\METHOD\82D110618S.M  
 Quant Title : SW846 8260

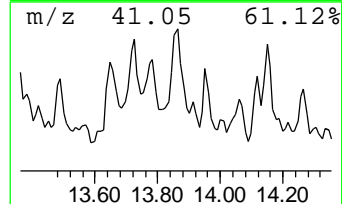
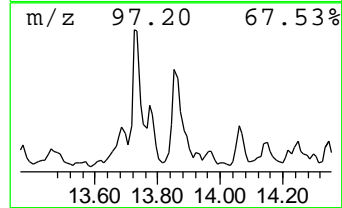
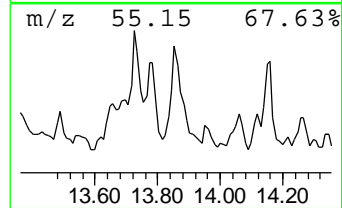
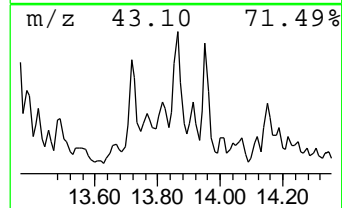
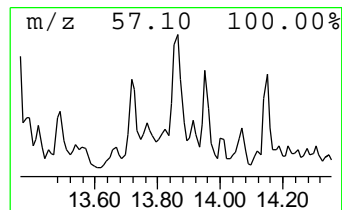
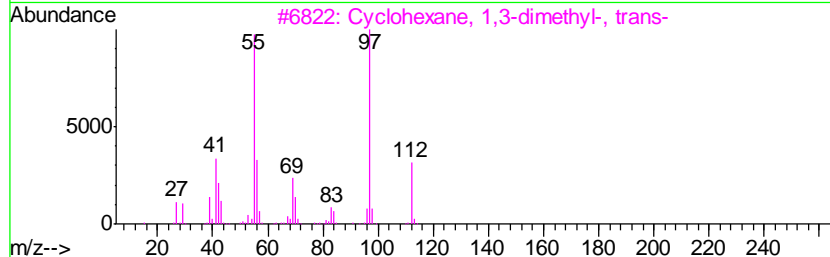
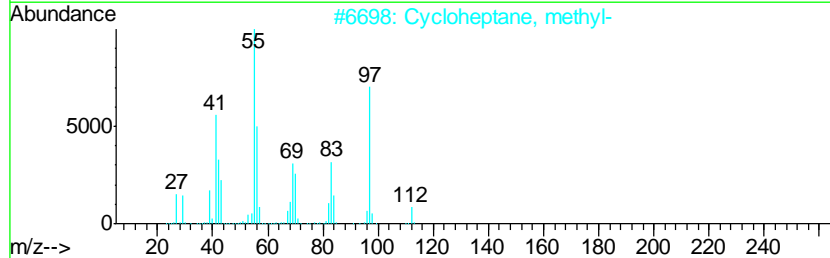
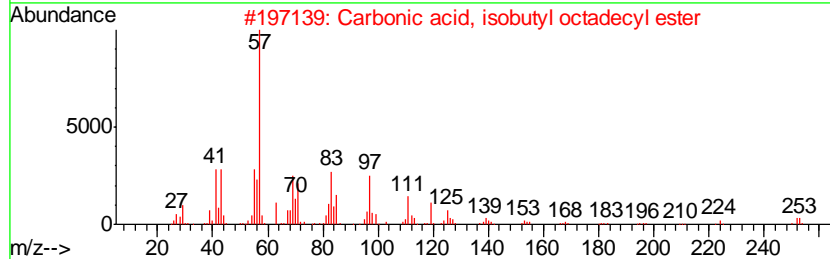
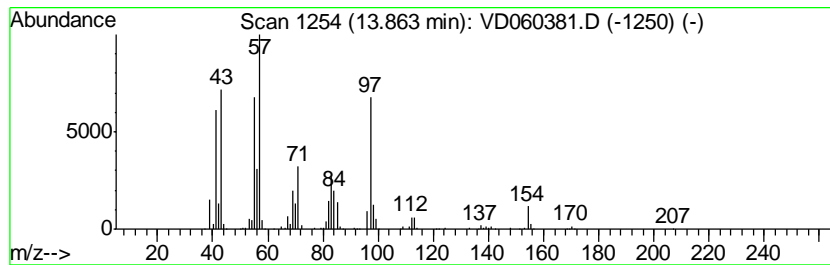
TIC Library : C:\DATABASE\NIST11.L  
 TIC Integration Parameters: LSCINT.P

\*\*\*\*\*  
 Peak Number 7 Carbonic acid, isobutyl oct... Concentration Rank 5

R.T.	EstConc	Area	Relative to ISTD	R.T.
13.86	75.54 ug/l	14904300	1,4-Dichlorobenzene-d4	13.36

Hit#	of	Tentative ID	MW	MolForm	CAS#	Qual
1	5	Carbonic acid, isobutyl octadecy...	370	C23H46O3	1000314-61-5	53
2		Cycloheptane, methyl-	112	C8H16	004126-78-7	43
3		Cyclohexane, 1,3-dimethyl-, trans-	112	C8H16	002207-03-6	38
4		Hept-2-ene, 2,4,4,6-tetramethyl-	154	C11H22	103982-58-7	38
5		Tridecane, 6-methyl-	198	C14H30	013287-21-3	35



Data Path : Z:\VOASRV\HPCHEM1\MSVOA\_D\DATA\VD111418\  
 Data File : VD060381.D  
 Acq On : 14 Nov 2018 16:13  
 Operator : JC/SY  
 Sample : J5930-01  
 Misc : 6.61g/5ml/MSVOA\_D/SOIL  
 ALS Vial : 13 Sample Multiplier: 1

Instrument :  
 MSVOA\_D  
 ClientSampleID :  
 32727-45914-21716

Quant Method : Z:\VOASRV\HPCHEM1\MSVOA\_D\METHOD\82D110618S.M  
 Quant Title : SW846 8260

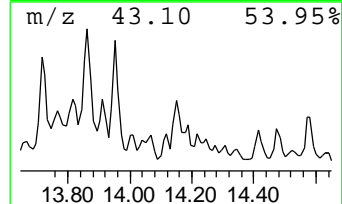
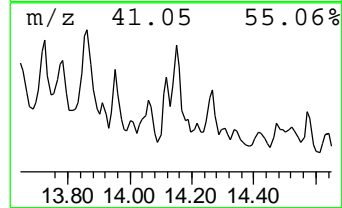
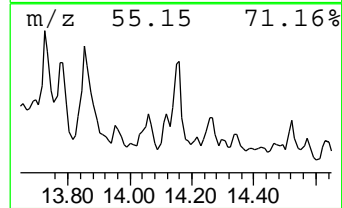
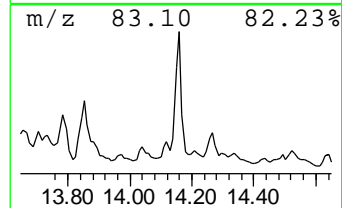
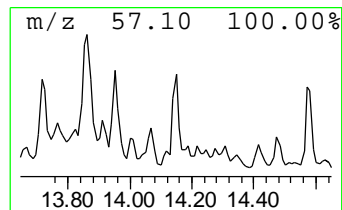
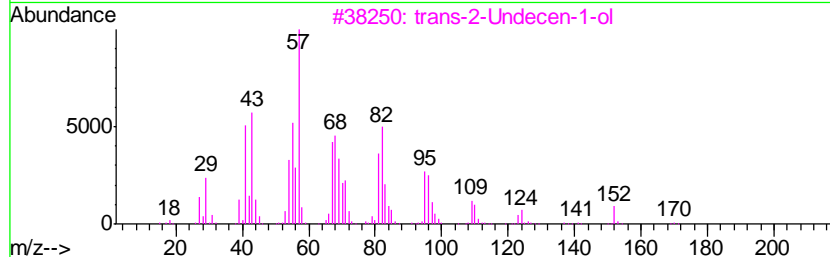
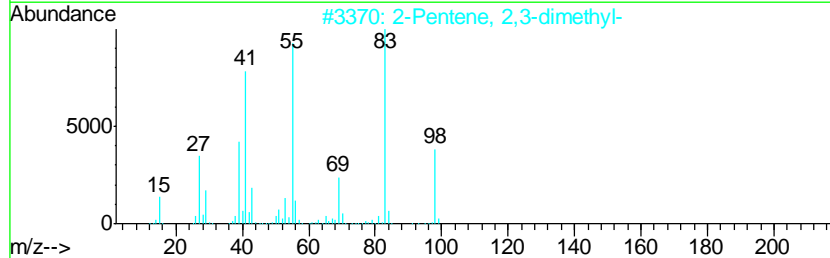
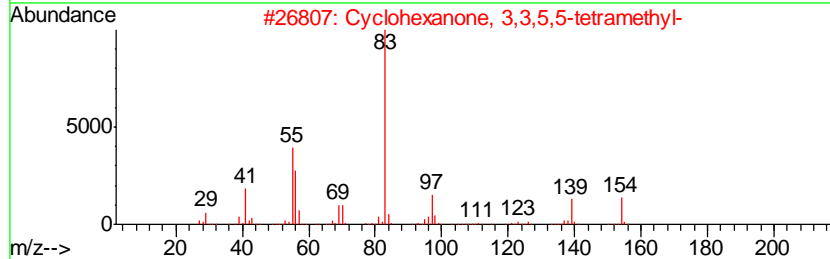
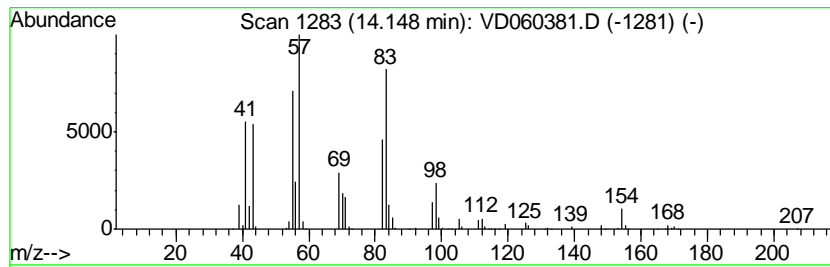
TIC Library : C:\DATABASE\NIST11.L  
 TIC Integration Parameters: LSCINT.P

\*\*\*\*\*  
 Peak Number 8 unknown14.15 Concentration Rank 10

R.T.	EstConc	Area	Relative to ISTD	R.T.
14.15	42.57 ug/l	8399400	1,4-Dichlorobenzene-d4	13.36

Hit#	of	Tentative ID	MW	MolForm	CAS#	Qual
1	5	Cyclohexanone, 3,3,5,5-tetramethyl-	154	C10H18O	014376-79-5	47
2		2-Pentene, 2,3-dimethyl-	98	C7H14	010574-37-5	43
3		trans-2-Undecen-1-ol	170	C11H22O	075039-84-8	38
4		5-Undecene	154	C11H22	004941-53-1	20
5		Cyclopropane, 1-butyl-1-methyl-2...	154	C11H22	041977-34-8	18



Data Path : Z:\VOASRV\HPCHEM1\MSVOA\_D\DATA\VD111418\  
 Data File : VD060381.D  
 Acq On : 14 Nov 2018 16:13  
 Operator : JC/SY  
 Sample : J5930-01  
 Misc : 6.61g/5ml/MSVOA\_D/SOIL  
 ALS Vial : 13 Sample Multiplier: 1

Instrument :  
 MSVOA\_D  
 ClientSampleID :  
 32727-45914-21716

Quant Method : Z:\VOASRV\HPCHEM1\MSVOA\_D\METHOD\82D110618S.M  
 Quant Title : SW846 8260

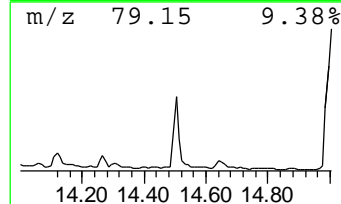
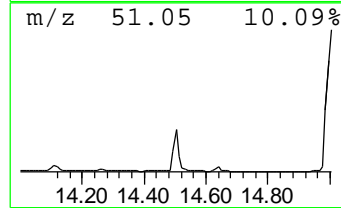
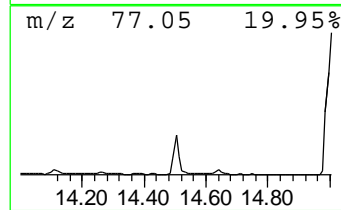
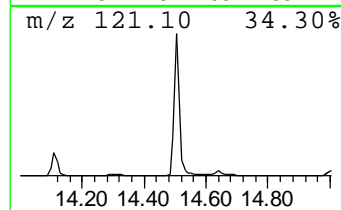
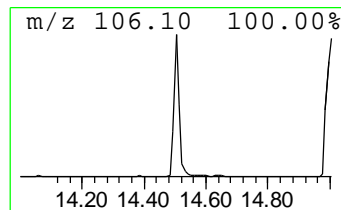
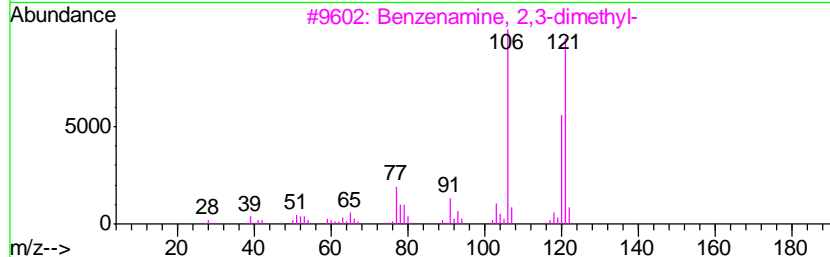
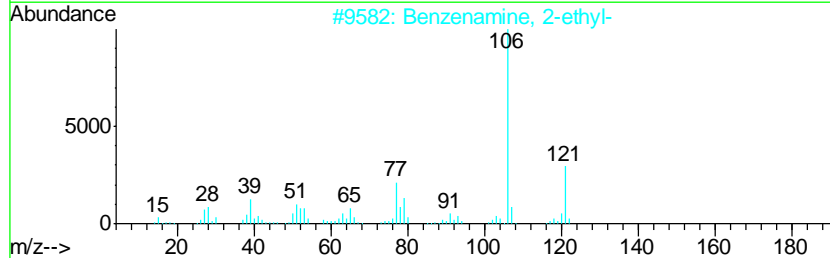
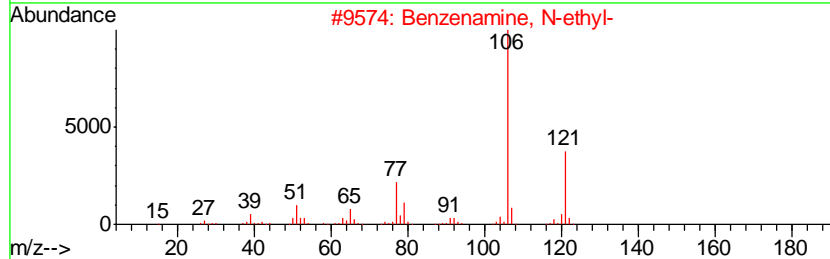
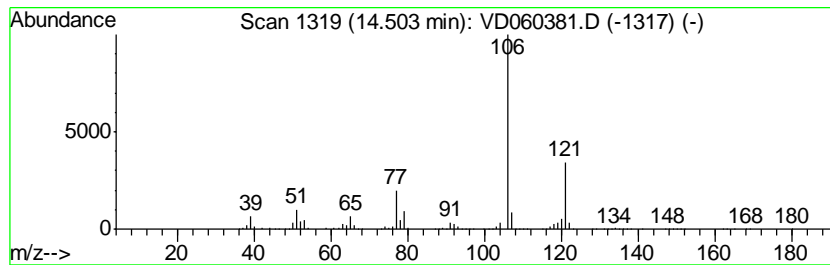
TIC Library : C:\DATABASE\NIST11.L  
 TIC Integration Parameters: LSCINT.P

\*\*\*\*\*  
 Peak Number 9 Benzenamine, N-ethyl- Concentration Rank 7

R.T.	EstConc	Area	Relative to ISTD	R.T.
14.50	52.73 ug/l	10404800	1,4-Dichlorobenzene-d4	13.36

Hit#	of	Tentative ID	MW	MolForm	CAS#	Qual
1	5	Benzenamine, N-ethyl-	121	C8H11N	000103-69-5	97
2		Benzenamine, 2-ethyl-	121	C8H11N	000578-54-1	91
3		Benzenamine, 2,3-dimethyl-	121	C8H11N	000087-59-2	86
4		Benzenamine, 4-ethyl-	121	C8H11N	000589-16-2	80
5		Pyridine, 3-ethyl-4-methyl-	121	C8H11N	000529-21-5	78



Data Path : Z:\VOASRV\HPCHEM1\MSVOA\_D\DATA\VD111418\  
 Data File : VD060381.D  
 Acq On : 14 Nov 2018 16:13  
 Operator : JC/SY  
 Sample : J5930-01  
 Misc : 6.61g/5ml/MSVOA\_D/SOIL  
 ALS Vial : 13 Sample Multiplier: 1

Instrument :  
 MSVOA\_D  
 ClientSampleID :  
 32727-45914-21716

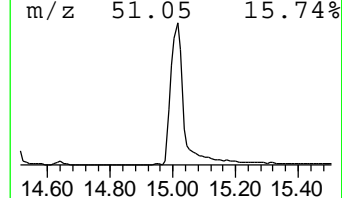
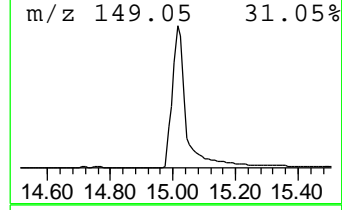
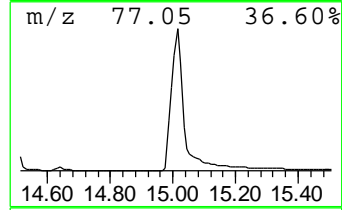
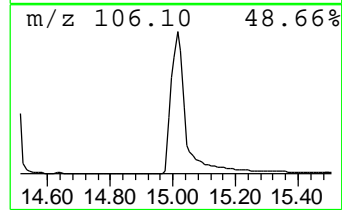
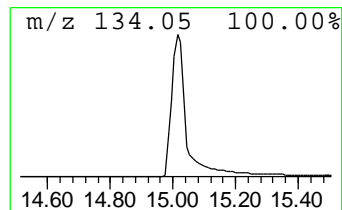
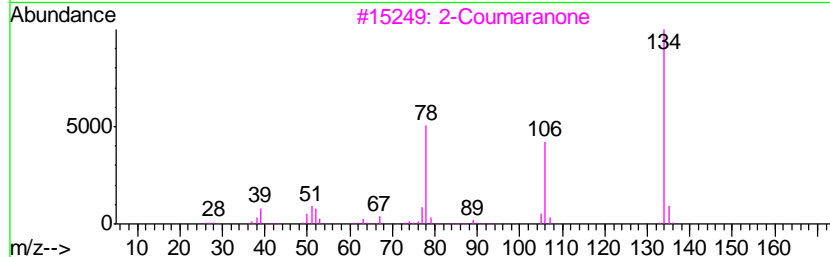
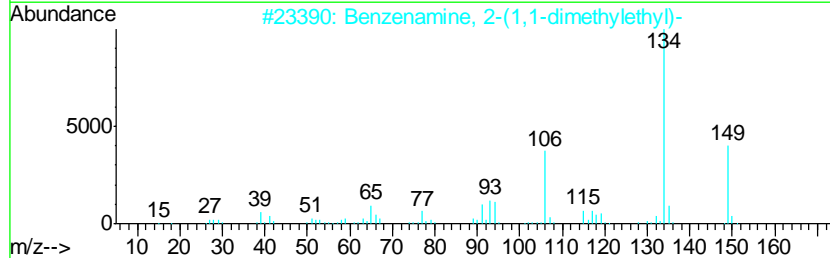
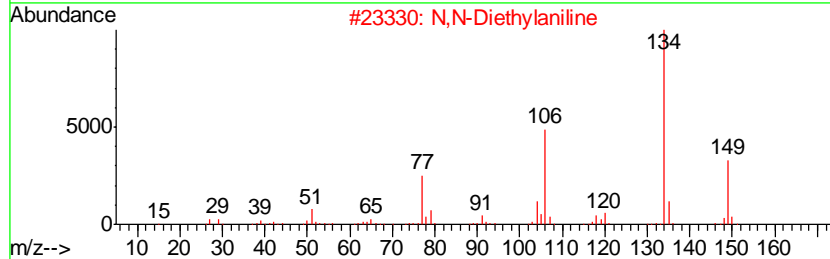
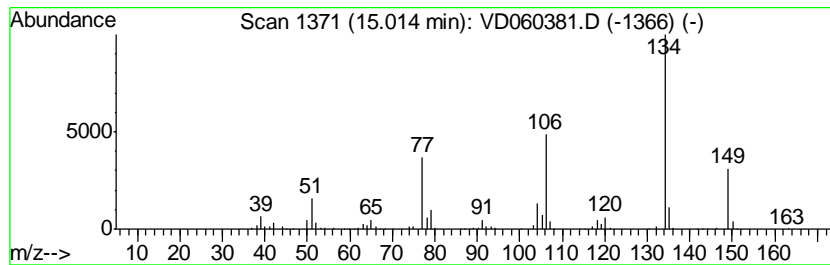
Quant Method : Z:\VOASRV\HPCHEM1\MSVOA\_D\METHOD\82D110618S.M  
 Quant Title : SW846 8260

TIC Library : C:\DATABASE\NIST11.L  
 TIC Integration Parameters: LSCINT.P

\*\*\*\*\*  
 Peak Number 10 N,N-Diethylaniline Concentration Rank 1

R.T.	EstConc	Area	Relative to ISTD	R.T.
15.01	312.09 ug/l	61579800	1,4-Dichlorobenzene-d4	13.36

Hit#	of	Tentative ID	MW	MolForm	CAS#	Qual
1	5	N,N-Diethylaniline	149	C10H15N	000091-66-7	95
2		Benzenamine, 2-(1,1-dimethylethyl)-	149	C10H15N	006310-21-0	64
3		2-Coumaranone	134	C8H6O2	000553-86-6	53
4		N-Ethyl-2,3-xylidine	149	C10H15N	041115-23-5	52
5		3-Methylisoxazolo[5,4-b]pyridine	134	C7H6N2O	058035-50-0	50



Data Path : Z:\VOASRV\HPCHEM1\MSVOA\_D\DATA\VD111418\  
Data File : VD060381.D  
Acq On : 14 Nov 2018 16:13  
Operator : JC/SY  
Sample : J5930-01  
Misc : 6.61g/5ml/MSVOA\_D/SOIL  
ALS Vial : 13 Sample Multiplier: 1

Instrument :  
MSVOA\_D  
ClientSampleId :  
32727-45914-21716

Quant Method : Z:\VOASRV\HPCHEM1\MSVOA\_D\METHOD\82D110618S.M  
Quant Title : SW846 8260

TIC Library : C:\DATABASE\NIST11.L  
TIC Integration Parameters: LSCINT.P

TIC Top Hit name	RT	EstConc	Units	Response	--Internal Standard--			
					#	RT	Resp	Conc
Acetaldehyde	1.95	143.7	ug/l	5565500	1	6.37	1936640	50.0
Nonane, 3-methyl-	12.07	82.3	ug/l	3118340	3	11.27	1894060	50.0
Heptane, 3-ethyl-...	12.19	141.3	ug/l	5354440	3	11.27	1894060	50.0
Naphthalene, deca...	13.65	45.6	ug/l	8997150	4	13.36	9865780	50.0
Undecane	13.73	54.4	ug/l	10725500	4	13.36	9865780	50.0
Cyclohexane, 1,2-...	13.78	43.8	ug/l	8637100	4	13.36	9865780	50.0
Carbonic acid, is...	13.86	75.5	ug/l	14904300	4	13.36	9865780	50.0
unknown14.15	14.15	42.6	ug/l	8399400	4	13.36	9865780	50.0
Benzenamine, N-et...	14.50	52.7	ug/l	10404800	4	13.36	9865780	50.0
N,N-Diethylaniline	15.01	312.1	ug/l	61579800	4	13.36	9865780	50.0