

Data Path : Z:\voasrv\HPCHEM1\MSVOA\_D\Data\VD111423\  
 Data File : VD077557.D  
 Acq On : 14 Nov 2023 11:36  
 Operator : JC/SY  
 Sample : 05296-07  
 Misc : 5.41G/10ml/MSVOA\_D/SOIL  
 ALS Vial : 6 Sample Multiplier: 1

Instrument :  
 MSVOA\_D  
 ClientSampleId :  
 BH3R9

Quant Time: Nov 16 02:27:52 2023  
 Quant Method : Z:\voasrv\HPCHEM1\MSVOA\_D\Method\SFAMDLM110923SMA.M  
 Quant Title : SFAM01.0  
 QLast Update : Fri Nov 10 02:07:44 2023  
 Response via : Initial Calibration

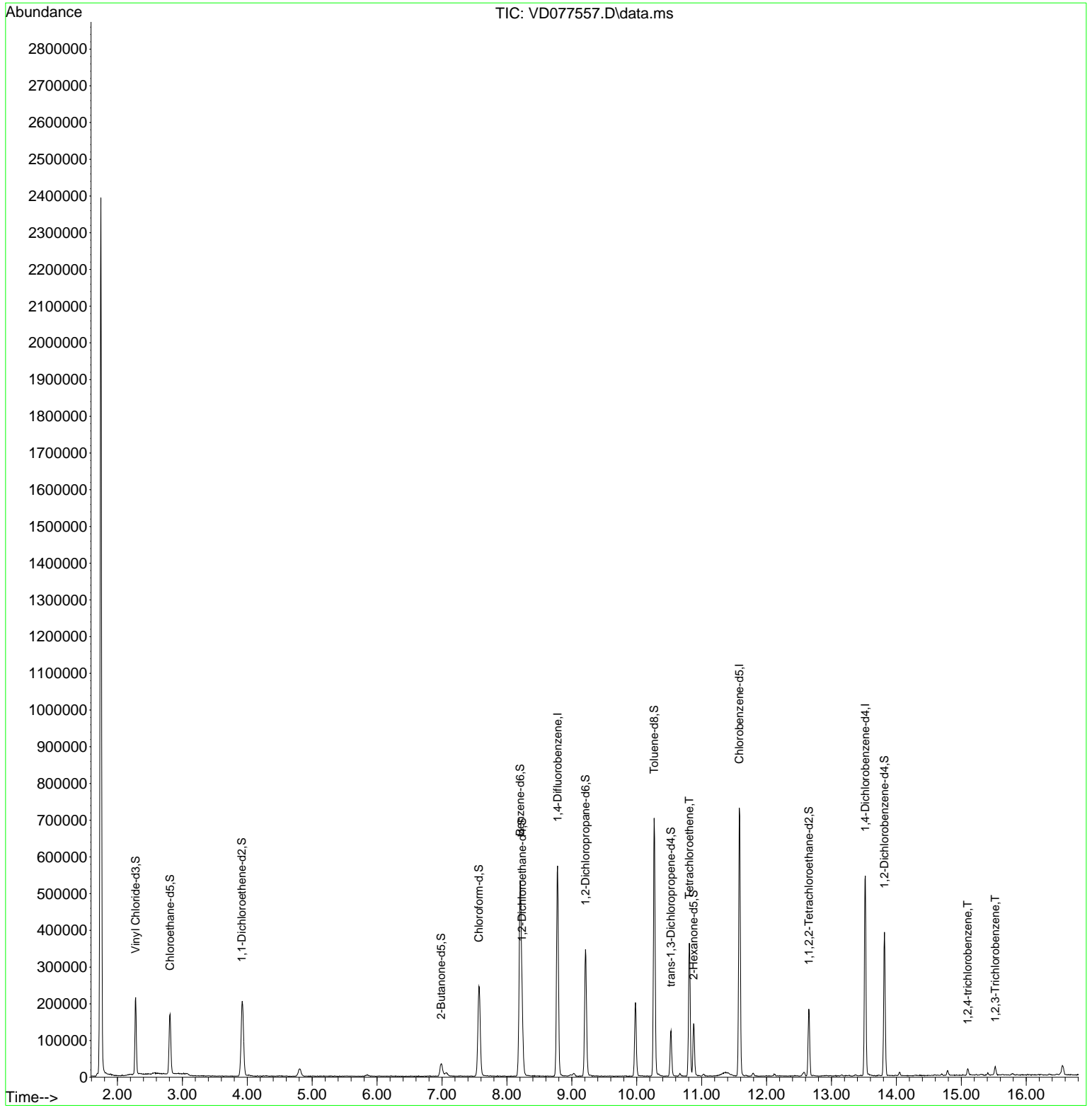
Compound	R.T.	QIon	Response	Conc	Units	Dev(Min)
Internal Standards						
1) 1,4-Difluorobenzene	8.781	114	471219	25.000	ug/L	0.00
28) Chlorobenzene-d5	11.581	117	395041	25.000	ug/L	0.00
58) 1,4-Dichlorobenzene-d4	13.522	152	139814	25.000	ug/L	0.00
System Monitoring Compounds						
4) Vinyl Chloride-d3	2.281	65	197046	16.438	ug/L	0.00
Spiked Amount	25.000	Range 30 - 150	Recovery =	65.760%		
7) Chloroethane-d5	2.811	69	169810	18.033	ug/L	0.00
Spiked Amount	25.000	Range 30 - 150	Recovery =	72.120%		
11) 1,1-Dichloroethene-d2	3.916	65	64484	17.397	ug/L	0.00
Spiked Amount	25.000	Range 45 - 110	Recovery =	69.600%		
21) 2-Butanone-d5	6.987	46	63869	30.775	ug/L	0.00
Spiked Amount	50.000	Range 20 - 135	Recovery =	61.540%		
24) Chloroform-d	7.569	84	253121	18.595	ug/L	0.00
Spiked Amount	25.000	Range 40 - 150	Recovery =	74.360%		
26) 1,2-Dichloroethane-d4	8.234	65	136493	18.851	ug/L	0.00
Spiked Amount	25.000	Range 70 - 130	Recovery =	75.400%		
32) Benzene-d6	8.204	84	534269	20.838	ug/L	0.00
Spiked Amount	25.000	Range 20 - 135	Recovery =	83.360%		
36) 1,2-Dichloropropane-d6	9.210	67	171773	20.568	ug/L	0.00
Spiked Amount	25.000	Range 70 - 120	Recovery =	82.280%		
41) Toluene-d8	10.269	98	467166	20.164	ug/L	0.00
Spiked Amount	25.000	Range 30 - 130	Recovery =	80.640%		
43) trans-1,3-Dichloroprop...	10.528	79	69417	19.278	ug/L	0.00
Spiked Amount	25.000	Range 30 - 135	Recovery =	77.120%		
47) 2-Hexanone-d5	10.875	63	50971	34.117	ug/L	0.00
Spiked Amount	50.000	Range 20 - 135	Recovery =	68.240%		
56) 1,1,2,2-Tetrachloroeth...	12.651	84	94671	17.109	ug/L	0.00
Spiked Amount	25.000	Range 45 - 120	Recovery =	68.440%		
66) 1,2-Dichlorobenzene-d4	13.816	152	97936	19.690	ug/L	0.00
Spiked Amount	25.000	Range 75 - 120	Recovery =	78.760%		
Target Compounds						
46) Tetrachloroethene	10.810	164	80324	16.082	ug/L	96
70) 1,2,4-trichlorobenzene	15.098	180	5380	1.010	ug/L	94
72) 1,2,3-Trichlorobenzene	15.522	180	5675	1.250	ug/L	97

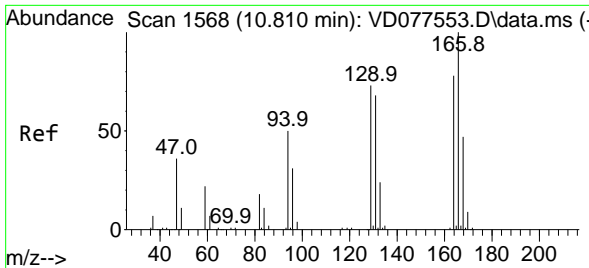
(#) = qualifier out of range (m) = manual integration (+) = signals summed

Data Path : Z:\voasrv\HPCHEM1\MSVOA\_D\Data\VD111423\  
 Data File : VD077557.D  
 Acq On : 14 Nov 2023 11:36  
 Operator : JC/SY  
 Sample : 05296-07  
 Misc : 5.41G/10ml/MSVOA\_D/SOIL  
 ALS Vial : 6 Sample Multiplier: 1

**Instrument :**  
 MSVOA\_D  
**ClientSampleId :**  
 BH3R9

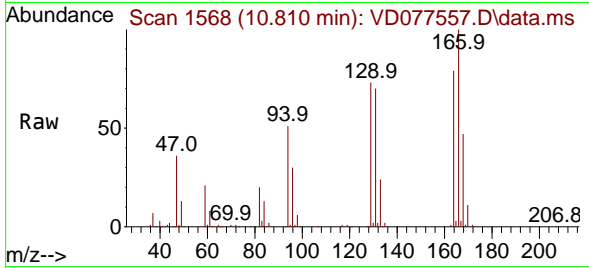
Quant Time: Nov 16 02:27:52 2023  
 Quant Method : Z:\voasrv\HPCHEM1\MSVOA\_D\Method\SFAMDLM110923SMA.M  
 Quant Title : SFAM01.0  
 QLast Update : Fri Nov 10 02:07:44 2023  
 Response via : Initial Calibration





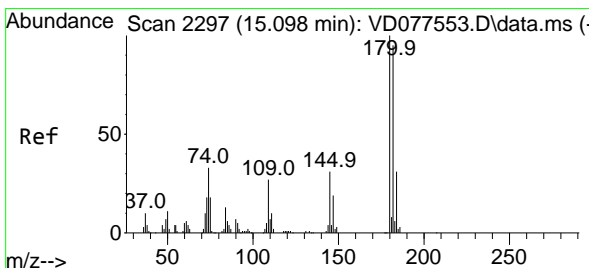
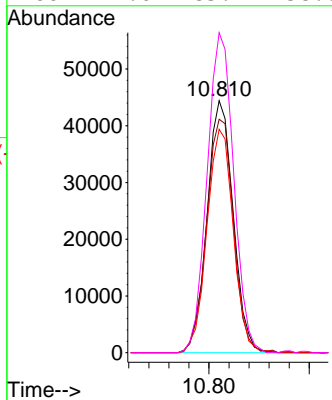
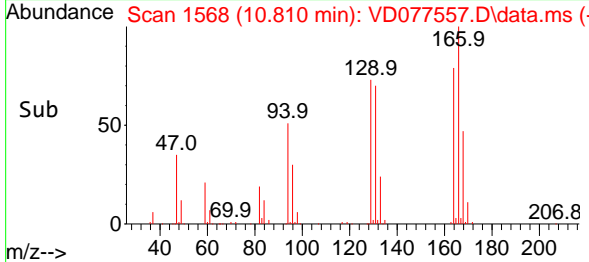
#46  
 Tetrachloroethene  
 Concen: 16.082 ug/L  
 RT: 10.810 min Scan# 11  
 Delta R.T. -0.000 min  
 Lab File: VD077557.D  
 Acq: 14 Nov 2023 11:36

Instrument :  
 MSVOA\_D  
 ClientSampleId :  
 BH3R9

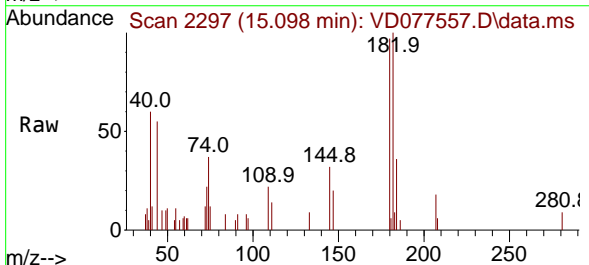


Tgt Ion:164 Resp: 80324

Ion	Ratio	Lower	Upper
164	100		
129	92.6	60.6	112.6
131	88.7	61.6	114.4
166	127.0	85.4	158.6

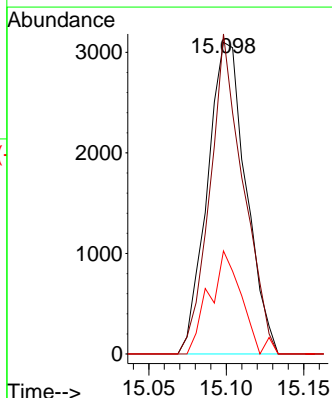
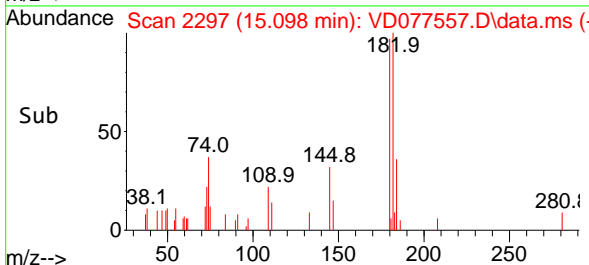


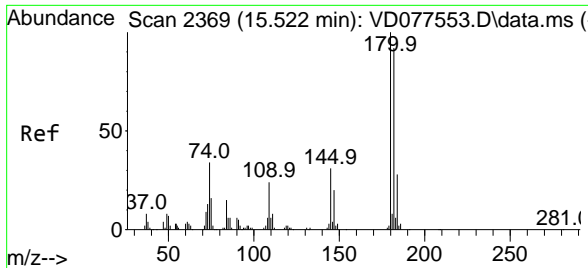
#70  
 1,2,4-trichlorobenzene  
 Concen: 1.010 ug/L  
 RT: 15.098 min Scan# 2297  
 Delta R.T. -0.000 min  
 Lab File: VD077557.D  
 Acq: 14 Nov 2023 11:36



Tgt Ion:180 Resp: 5380

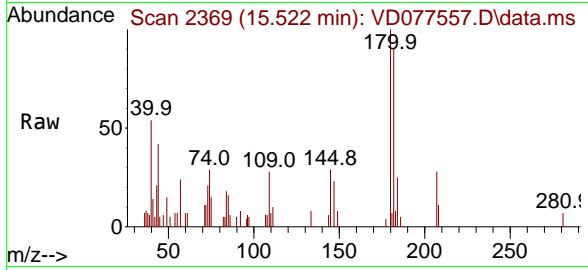
Ion	Ratio	Lower	Upper
180	100		
182	88.4	75.8	113.6
145	26.7	24.1	36.1





#72  
 1,2,3-Trichlorobenzene  
 Concen: 1.250 ug/L  
 RT: 15.522 min Scan# 21  
 Delta R.T. -0.000 min  
 Lab File: VD077557.D  
 Acq: 14 Nov 2023 11:36

Instrument :  
 MSVOA\_D  
 ClientSampleId :  
 BH3R9



Tgt Ion	Resp	Ion Ratio	Lower	Upper
180	5675	100		
182		93.2	76.8	115.2
145		31.3	26.0	39.0

