

Data File : VD064223.D
 Acq On : 15 Nov 2019 13:11
 Operator : VA/SY
 Sample : K5838-01
 Misc : 7.92G/5.00ml/MSVOA_D/SOIL
 ALS Vial : 8 Sample Multiplier: 1

Instrument :
 MSVOA_D
 ClientSampleId :
 UC-TP

Quant Time: Nov 16 04:50:44 2019
 Quant Method : Z:\VOASRV\HPCHEM1\MSVOA_D\METHOD\82D110819S.M
 Quant Title : SW846 8260
 QLast Update : Tue Nov 12 02:43:24 2019
 Response via : Initial Calibration

Internal Standards	R.T.	QIon	Response	Conc	Units	Dev(Min)
1) Pentafluorobenzene	7.98	168	959564	50.00	ug/l	0.00
34) 1,4-Difluorobenzene	8.87	114	1412153	50.00	ug/l	0.00
63) Chlorobenzene-d5	11.65	117	1304947	50.00	ug/l	0.00
72) 1,4-Dichlorobenzene-d4	13.58	152	630106	50.00	ug/l	0.00

System Monitoring Compounds

33) 1,2-Dichloroethane-d4	8.33	65	409109	51.84	ug/l	0.00
Spiked Amount	50.000		Recovery	=	103.68%	
35) Dibromofluoromethane	7.92	113	426225	52.58	ug/l	0.00
Spiked Amount	50.000		Recovery	=	105.16%	
50) Toluene-d8	10.34	98	1679879	54.94	ug/l	0.00
Spiked Amount	50.000		Recovery	=	109.88%	
62) 4-Bromofluorobenzene	12.64	95	569777	53.80	ug/l	0.00
Spiked Amount	50.000		Recovery	=	107.60%	

Target Compounds

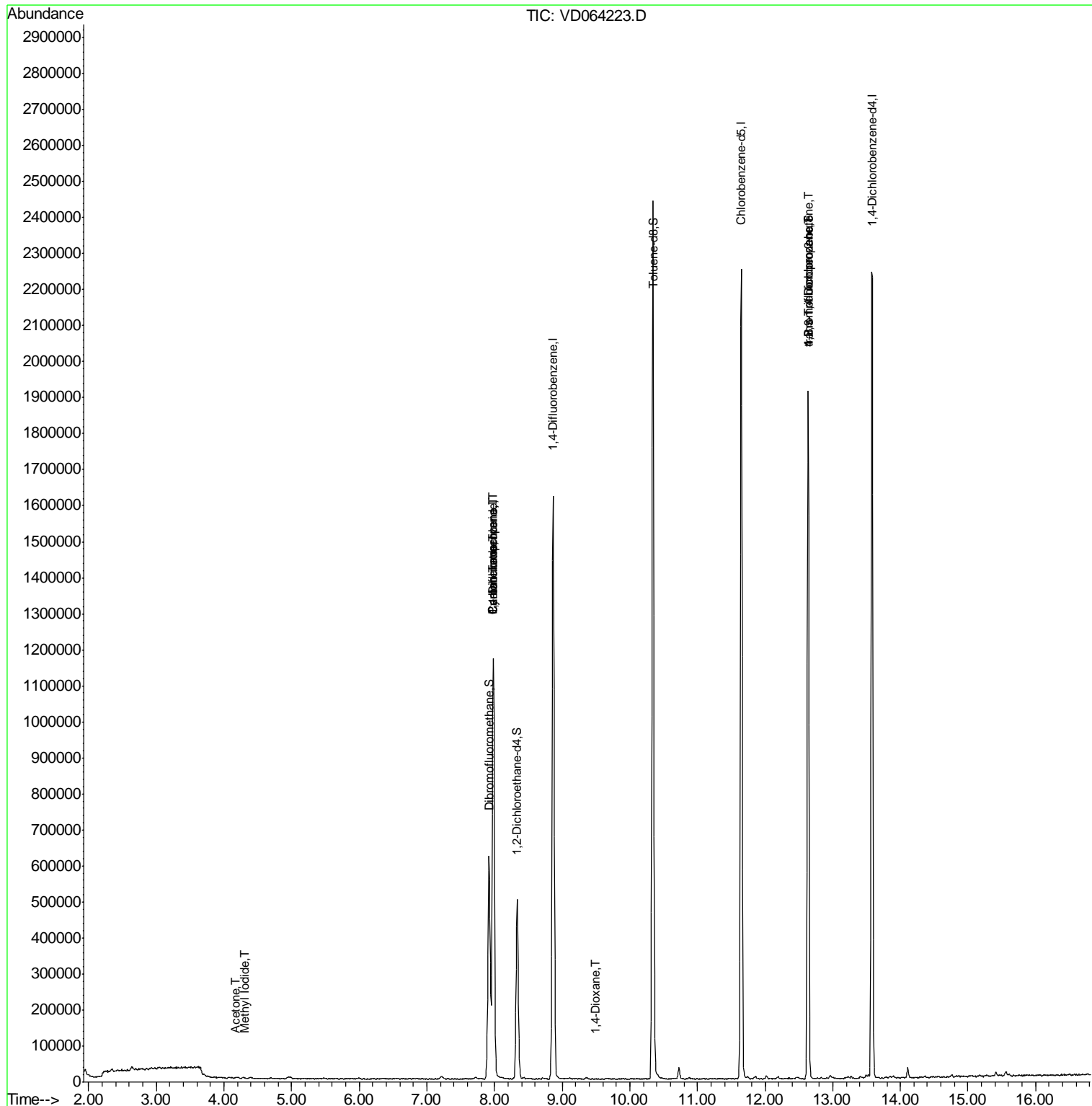
						Qvalue
10) Methyl Iodide	4.31	142	1032	2.134	ug/l #	41
16) Acetone	4.17	43	3572	1.911	ug/l #	45
31) Cyclohexane	7.98	56	20249	1.307	ug/l #	33
36) 1,1-Dichloropropene	7.98	75	64151	4.922	ug/l #	50
38) Carbon Tetrachloride	7.98	117	87316	6.261	ug/l #	15
49) 1,4-Dioxane	9.50	88	58	1.040	ug/l #	1
76) 1,2,3-Trichloropropane	12.64	75	300705	59.249	ug/l #	100
81) trans-1,4-Dichloro-2-buten	12.64	75	300705	117.691	ug/l #	10

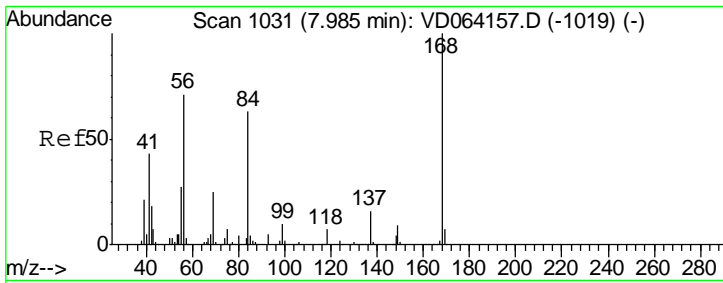
(#) = qualifier out of range (m) = manual integration (+) = signals summed

Data File : VD064223.D
Acq On : 15 Nov 2019 13:11
Operator : VA/SY
Sample : K5838-01
Misc : 7.92G/5.00ml/MSVOA_D/SOIL
ALS Vial : 8 Sample Multiplier: 1

Instrument :
MSVOA_D
ClientSampleId :
UC-TP

Quant Time: Nov 16 04:50:44 2019
Quant Method : Z:\VOASRV\HPCHEM1\MSVOA_D\METHOD\82D110819S.M
Quant Title : SW846 8260
QLast Update : Tue Nov 12 02:43:24 2019
Response via : Initial Calibration

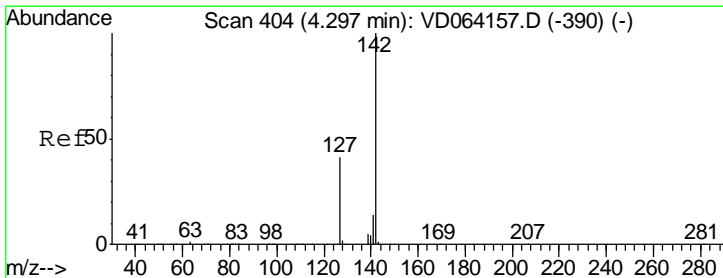
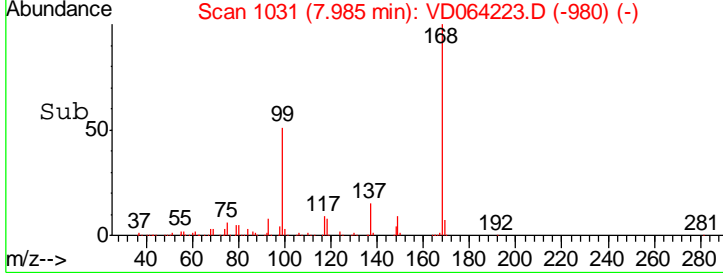
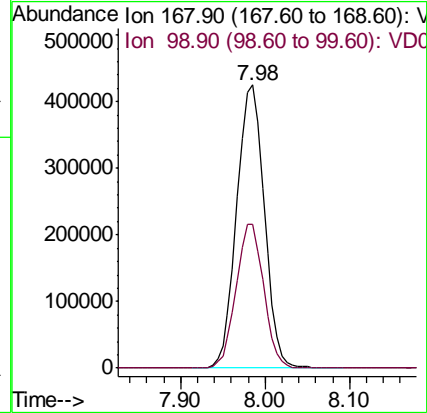
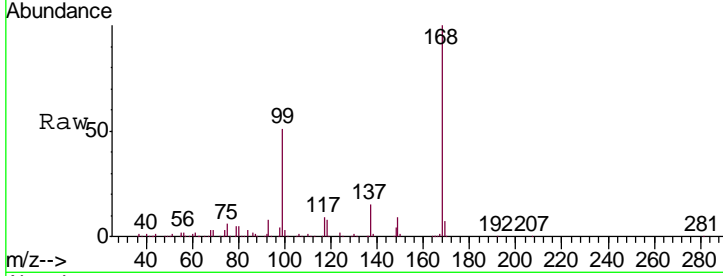




#1
 Pentafluorobenzene
 Concen: 50.000 ug/l
 RT: 7.98 min Scan# 1031
 Delta R.T. -0.00 min
 Lab File: VD064223.D
 Acq: 15 Nov 2019 13:11

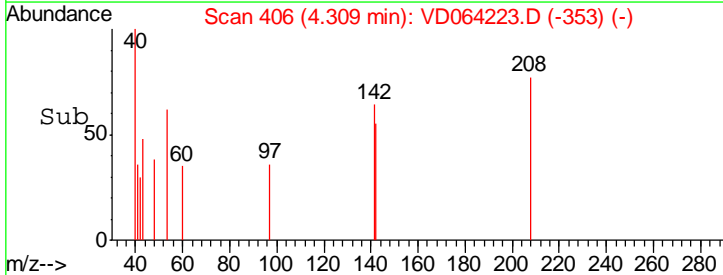
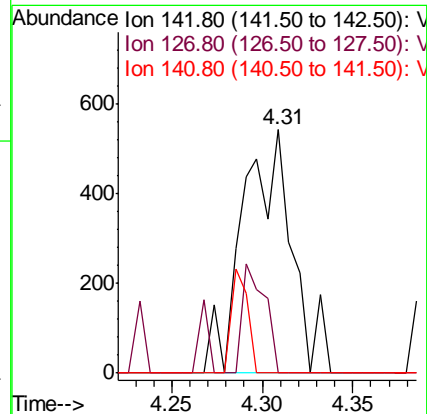
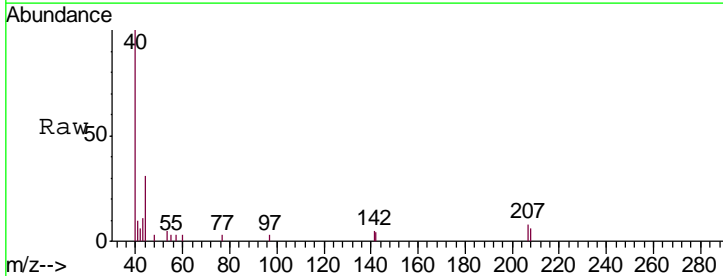
Instrument :
 MSVOA_D
 ClientSampled :
 UC-TP

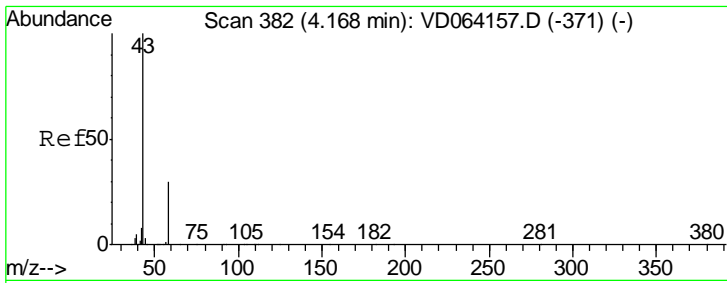
Tgt Ion:168 Resp: 959564
 Ion Ratio Lower Upper
 168 100
 99 50.6 41.6 62.4



#10
 Methyl Iodide
 Concen: 2.134 ug/l
 RT: 4.31 min Scan# 406
 Delta R.T. 0.01 min
 Lab File: VD064223.D
 Acq: 15 Nov 2019 13:11

Tgt Ion:142 Resp: 1032
 Ion Ratio Lower Upper
 142 100
 127 0.0 34.4 51.6#
 141 0.0 11.2 16.8#

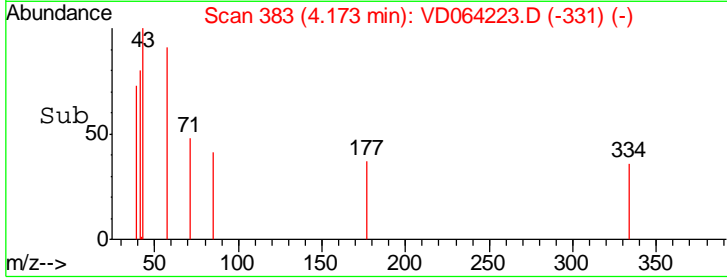
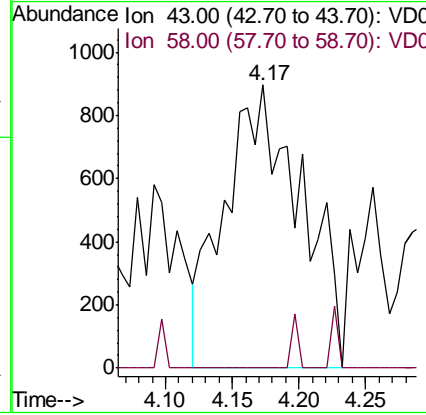
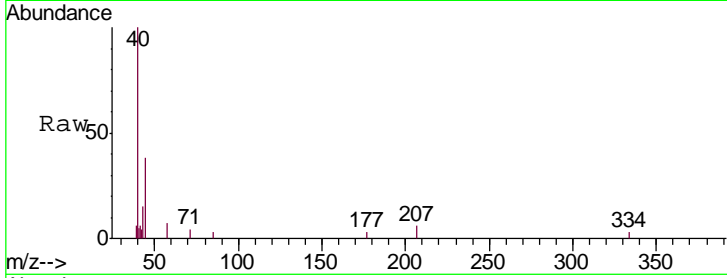




#16
 Acetone
 Concen: 1.911 ug/l
 RT: 4.17 min Scan# 383
 Delta R.T. 0.01 min
 Lab File: VD064223.D
 Acq: 15 Nov 2019 13:11

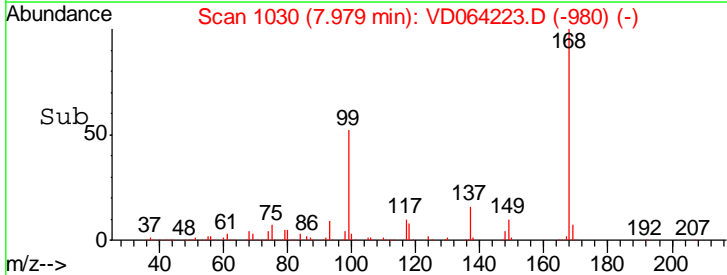
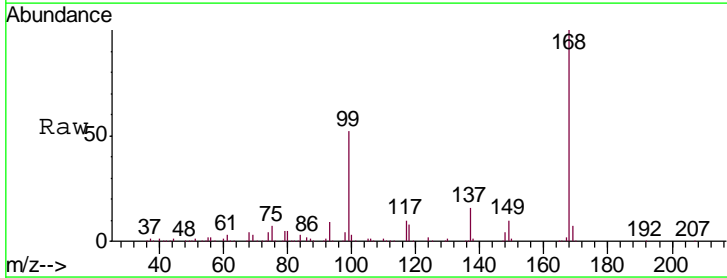
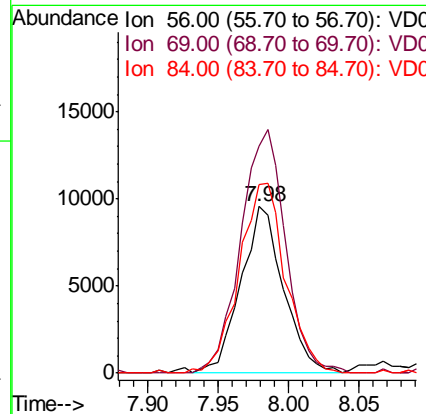
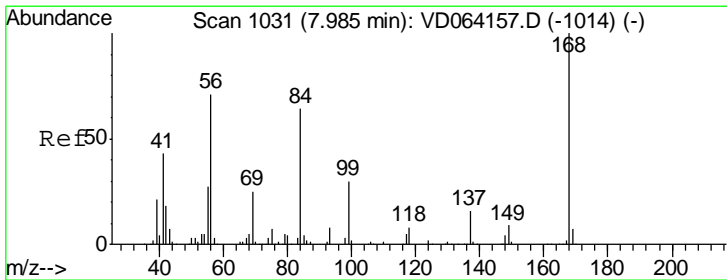
Instrument : MSVOA_D
 ClientSampled : UC-TP

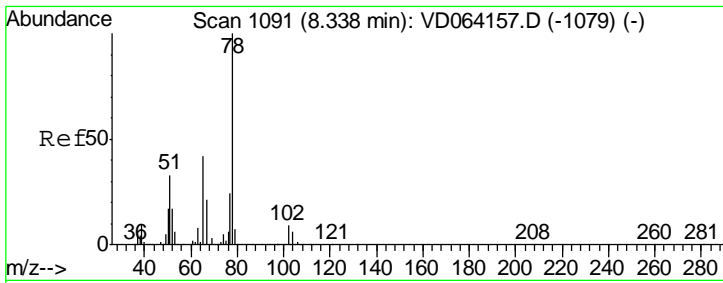
Tgt Ion	Resp	Lower	Upper
43	100		
58	0.0	24.1	36.1#



#31
 Cyclohexane
 Concen: 1.307 ug/l
 RT: 7.98 min Scan# 1030
 Delta R.T. -0.01 min
 Lab File: VD064223.D
 Acq: 15 Nov 2019 13:11

Tgt Ion	Resp	Lower	Upper
56	100		
69	136.3	28.2	42.4#
84	113.1	71.8	107.6#

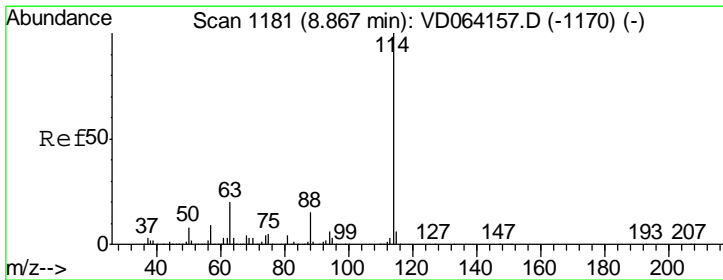
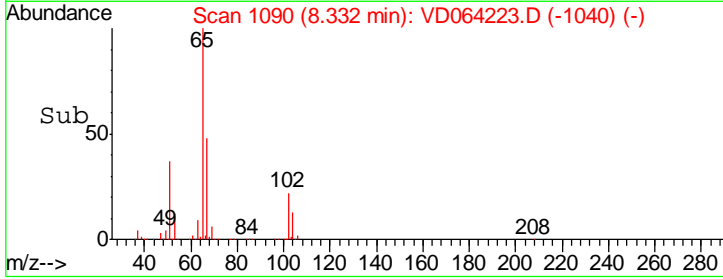
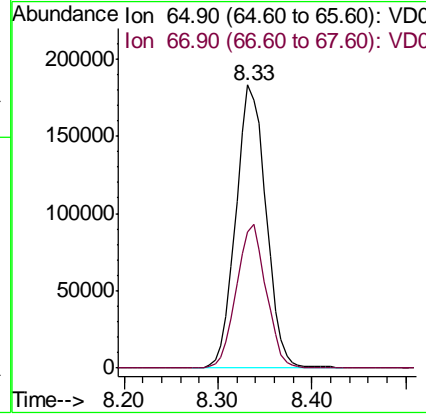
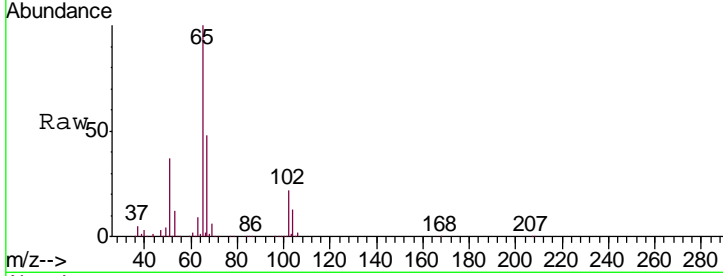




#33
 1,2-Dichloroethane-d4
 Concen: 51.839 ug/l
 RT: 8.33 min Scan# 1090
 Delta R.T. -0.01 min
 Lab File: VD064223.D
 Acq: 15 Nov 2019 13:11

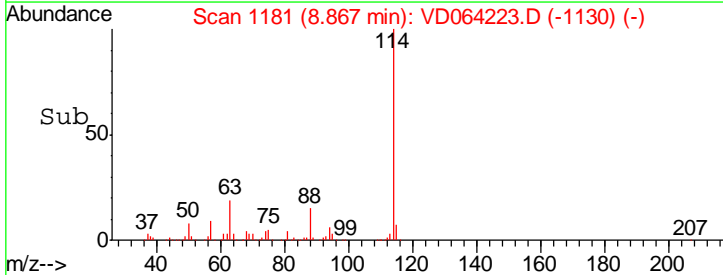
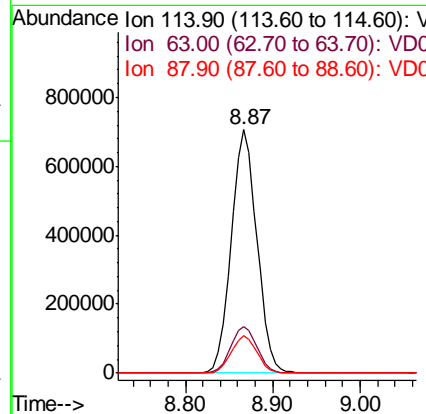
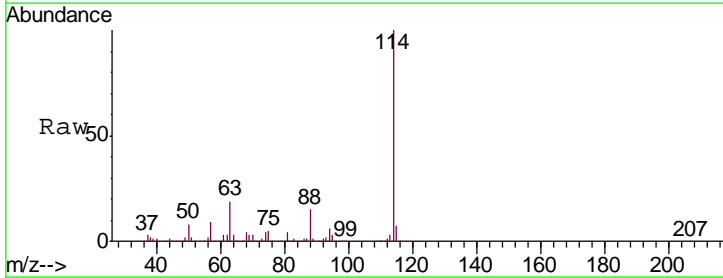
Instrument :
 MSVOA_D
 ClientSampled :
 UC-TP

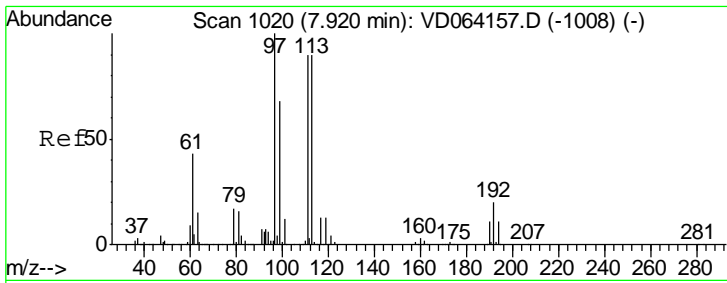
Tgt Ion: 65 Resp: 409109
 Ion Ratio Lower Upper
 65 100
 67 49.9 0.0 104.4



#34
 1,4-Difluorobenzene
 Concen: 50.000 ug/l
 RT: 8.87 min Scan# 1181
 Delta R.T. -0.00 min
 Lab File: VD064223.D
 Acq: 15 Nov 2019 13:11

Tgt Ion: 114 Resp: 1412153
 Ion Ratio Lower Upper
 114 100
 63 19.1 0.0 40.0
 88 15.3 0.0 30.2

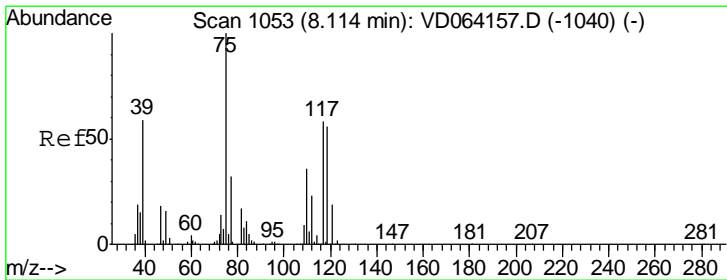
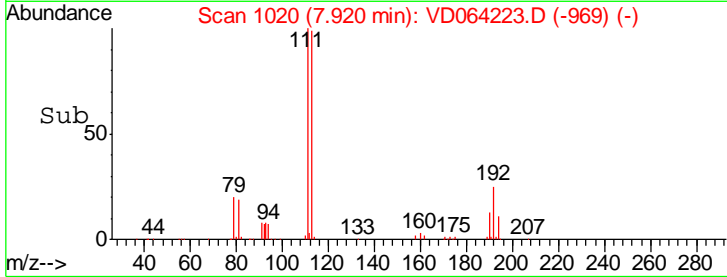
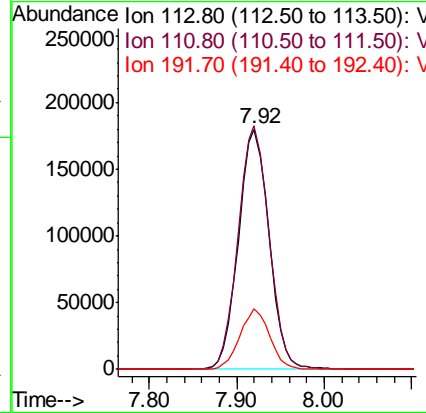
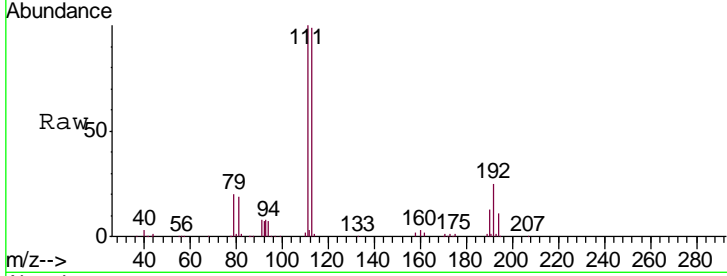




#35
 Dibromofluoromethane
 Concen: 52.581 ug/l
 RT: 7.92 min Scan# 1020
 Delta R.T. -0.00 min
 Lab File: VD064223.D
 Acq: 15 Nov 2019 13:11

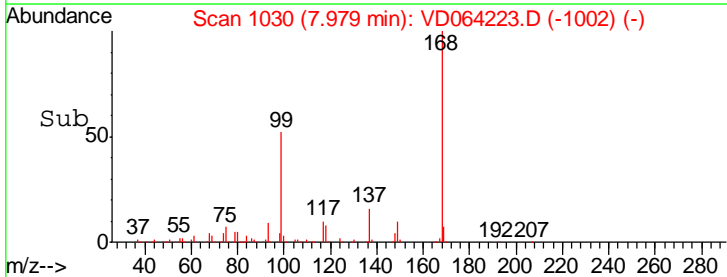
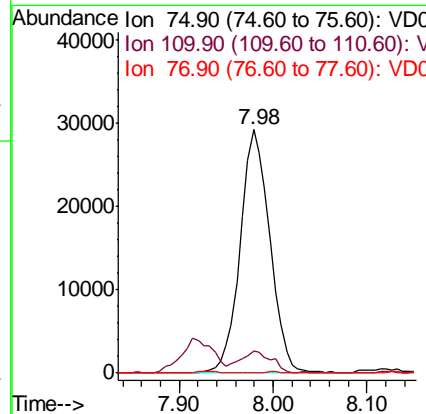
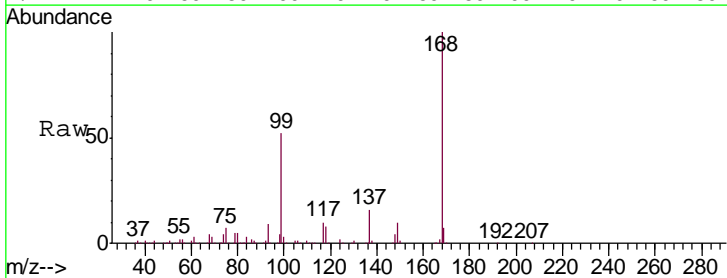
Instrument :
 MSVOA_D
 ClientSampled :
 UC-TP

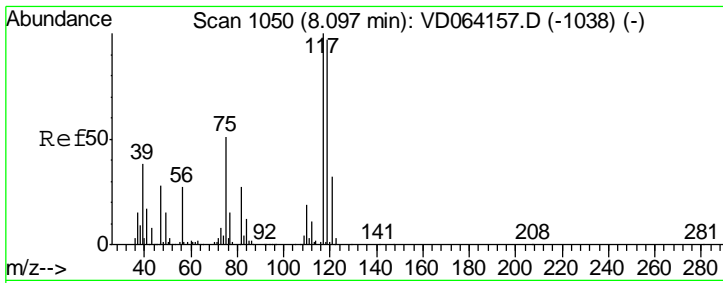
Tgt Ion	Resp	Lower	Upper
113	100		
111	102.3	81.5	122.3
192	24.3	18.8	28.2



#36
 1,1-Dichloropropene
 Concen: 4.922 ug/l
 RT: 7.98 min Scan# 1030
 Delta R.T. -0.14 min
 Lab File: VD064223.D
 Acq: 15 Nov 2019 13:11

Tgt Ion	Resp	Lower	Upper
75	100		
110	9.6	18.3	54.9#
77	0.2	25.0	37.6#

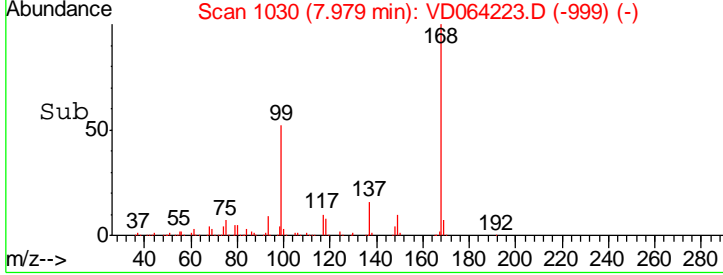
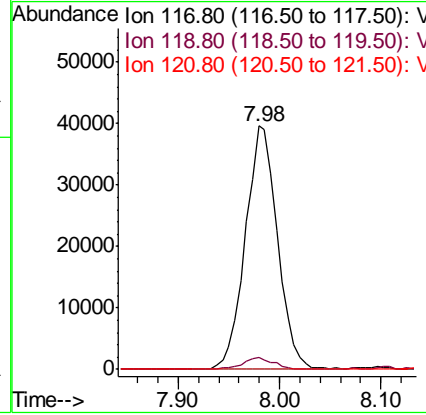
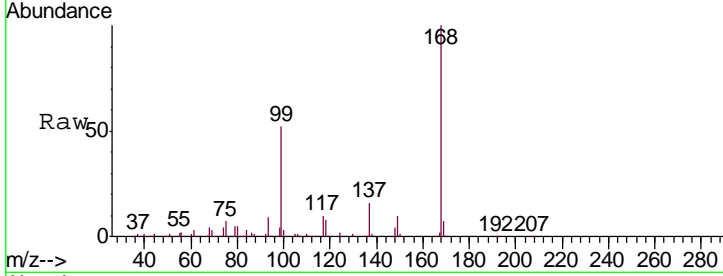




#38
 Carbon Tetrachloride
 Concen: 6.261 ug/l
 RT: 7.98 min Scan# 1030
 Delta R.T. -0.12 min
 Lab File: VD064223.D
 Acq: 15 Nov 2019 13:11

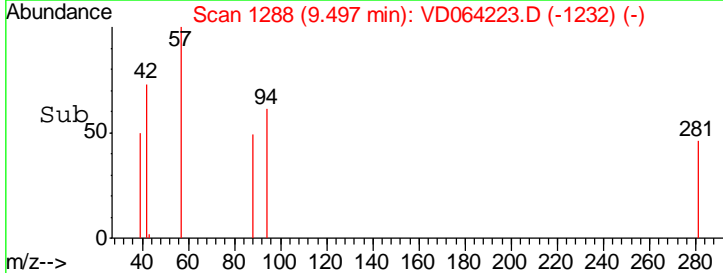
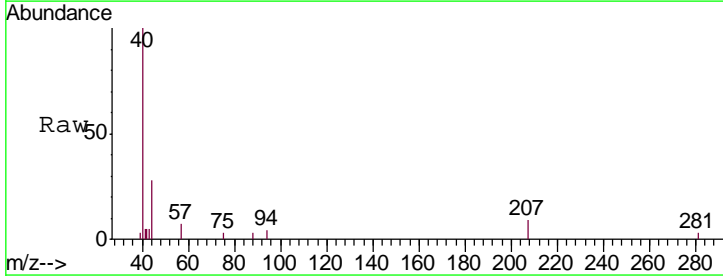
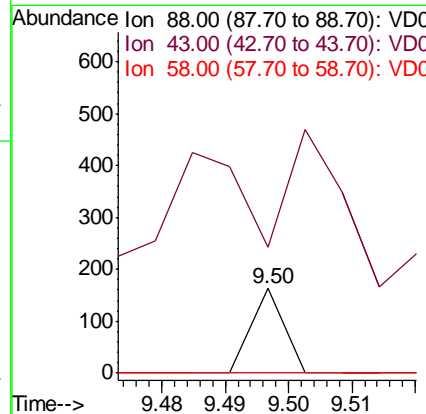
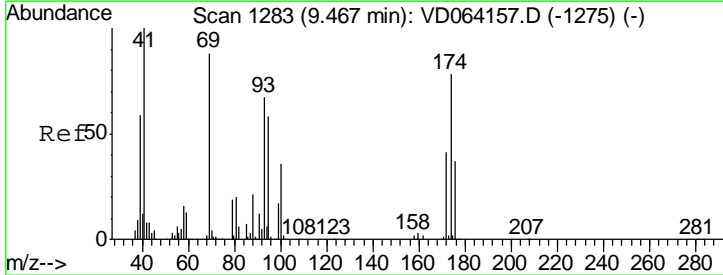
Instrument :
 MSVOA_D
 ClientSampled :
 UC-TP

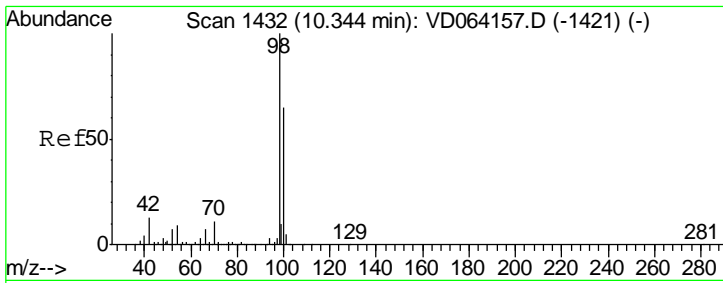
Tgt Ion	Resp	Lower	Upper
117	87316		
119	4.8	77.2	115.8#
121	0.0	25.5	38.3#



#49
 1,4-Dioxane
 Concen: 1.040 ug/l
 RT: 9.50 min Scan# 1288
 Delta R.T. 0.03 min
 Lab File: VD064223.D
 Acq: 15 Nov 2019 13:11

Tgt Ion	Resp	Lower	Upper
88	58		
88	100		
43	446.6	29.8	44.8#
58	0.0	58.1	87.1#

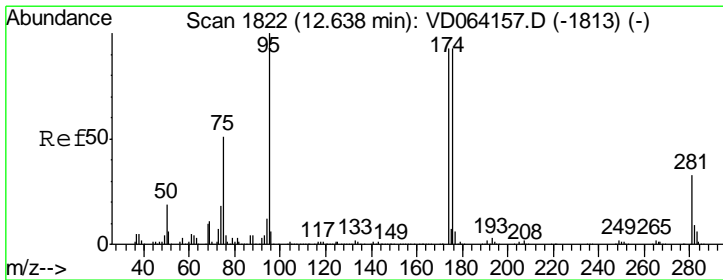
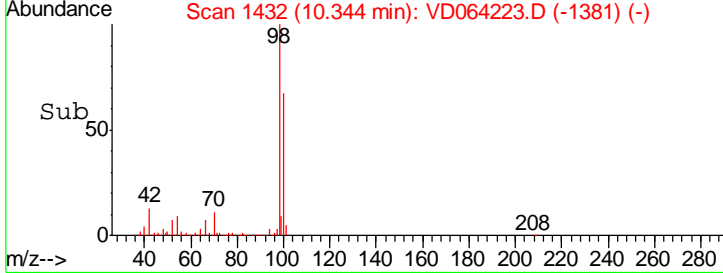
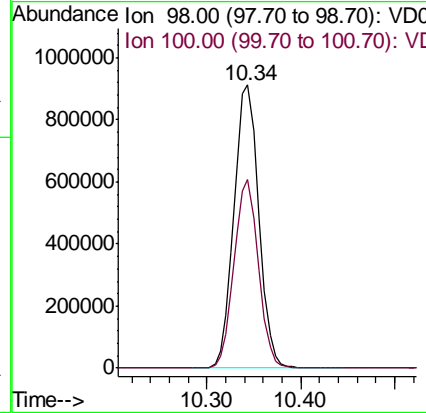
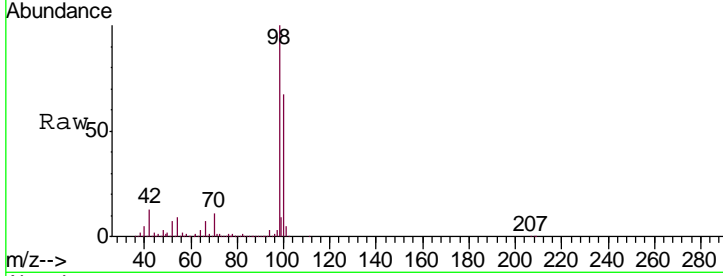




#50
 Toluene-d8
 Concen: 54.935 ug/l
 RT: 10.34 min Scan# 1432
 Delta R.T. -0.00 min
 Lab File: VD064223.D
 Acq: 15 Nov 2019 13:11

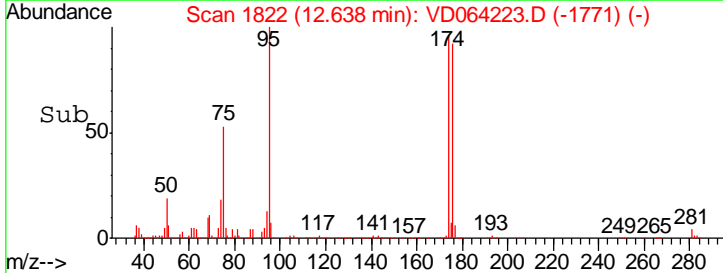
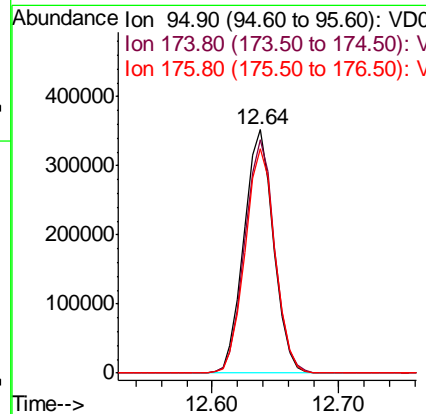
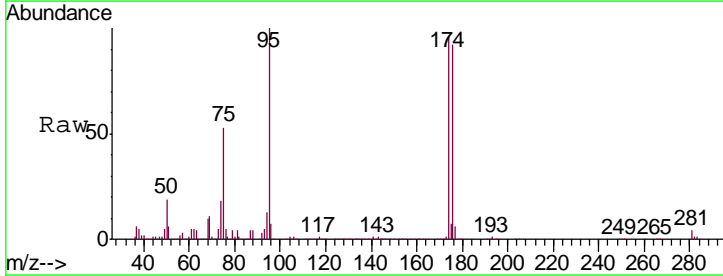
Instrument :
 MSVOA_D
 ClientSampled :
 UC-TP

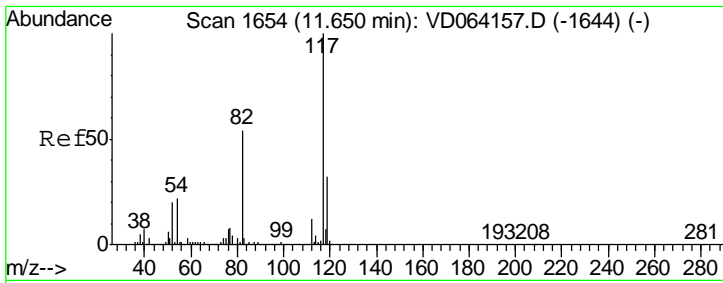
Tgt Ion: 98 Resp: 1679879
 Ion Ratio Lower Upper
 98 100
 100 65.3 52.6 78.8



#62
 4-Bromofluorobenzene
 Concen: 53.804 ug/l
 RT: 12.64 min Scan# 1822
 Delta R.T. -0.00 min
 Lab File: VD064223.D
 Acq: 15 Nov 2019 13:11

Tgt Ion: 95 Resp: 569777
 Ion Ratio Lower Upper
 95 100
 174 97.0 0.0 183.6
 176 93.4 0.0 180.2

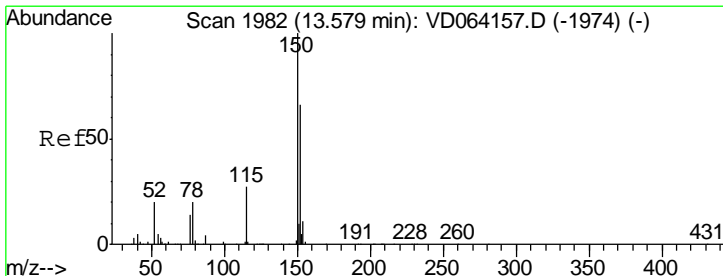
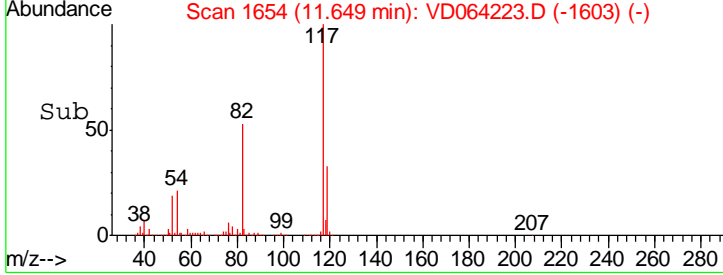
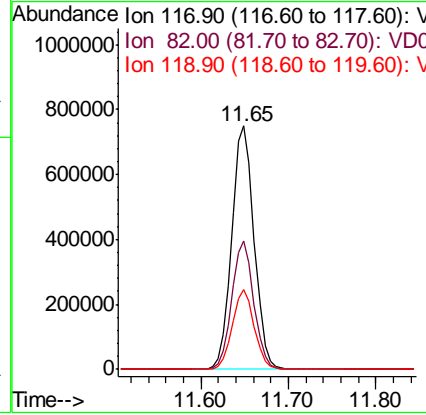
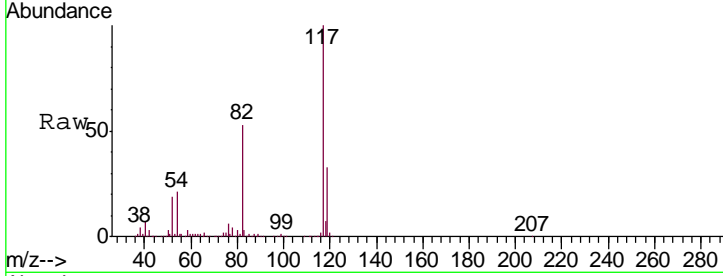




#63
 Chlorobenzene-d5
 Concen: 50.000 ug/l
 RT: 11.65 min Scan# 1654
 Delta R.T. -0.00 min
 Lab File: VD064223.D
 Acq: 15 Nov 2019 13:11

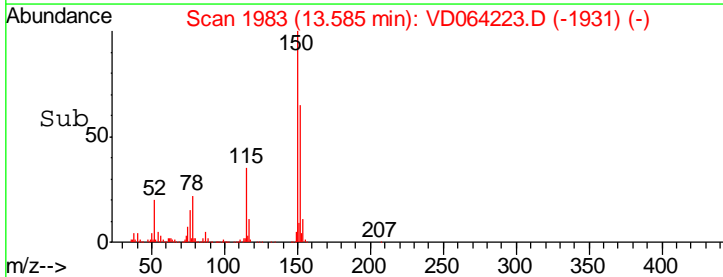
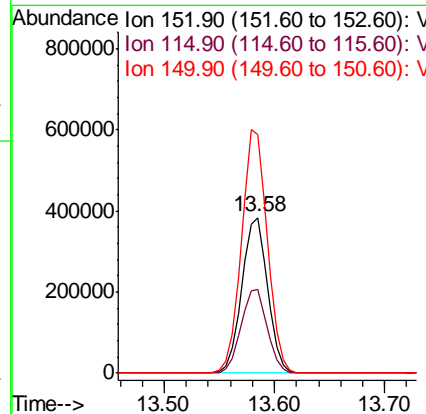
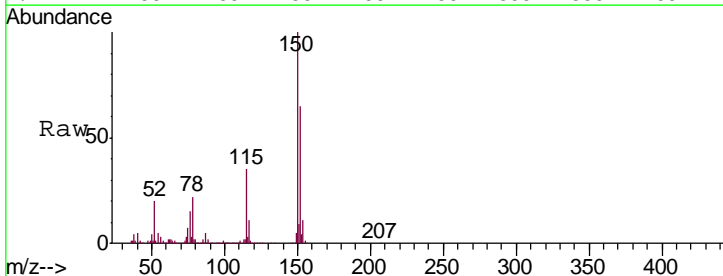
Instrument : MSVOA_D
 ClientSampled : UC-TP

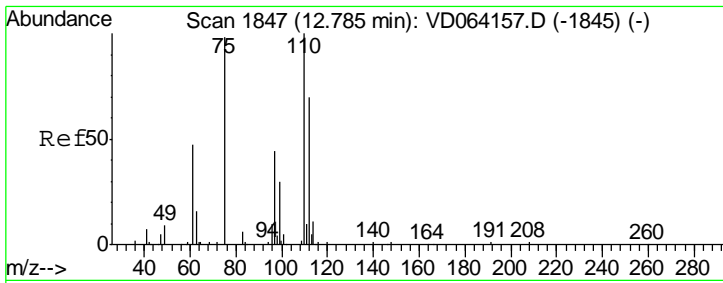
Tgt Ion	Resp	Lower	Upper
117	1304947		
82	52.7	42.8	64.2
119	32.6	25.6	38.4



#72
 1,4-Dichlorobenzene-d4
 Concen: 50.000 ug/l
 RT: 13.58 min Scan# 1983
 Delta R.T. 0.01 min
 Lab File: VD064223.D
 Acq: 15 Nov 2019 13:11

Tgt Ion	Resp	Lower	Upper
152	630106		
115	54.6	27.4	82.2
150	157.1	0.0	351.6

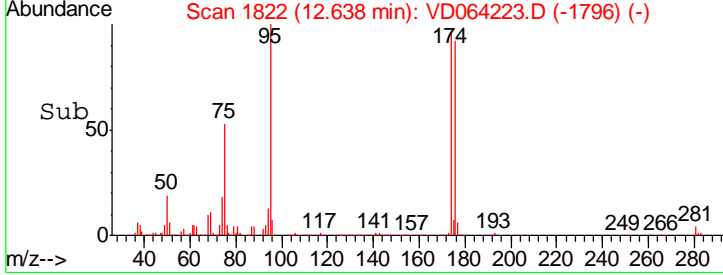
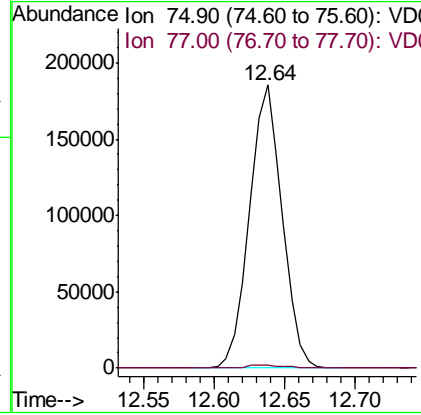
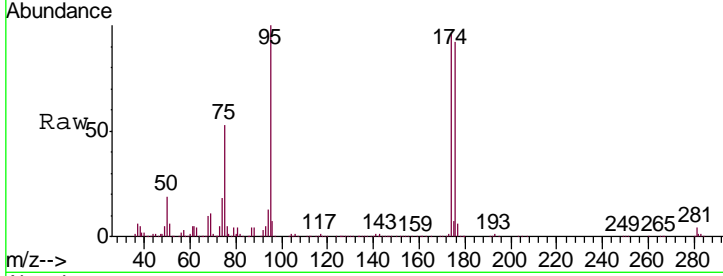




#76
 1,2,3-Trichloropropane
 Concen: 59.249 ug/l
 RT: 12.64 min Scan# 1822
 Delta R.T. -0.15 min
 Lab File: VD064223.D
 Acq: 15 Nov 2019 13:11

Instrument : MSVOA_D
 ClientSampled : UC-TP

Tgt Ion	Resp	Lower	Upper
75	100		
77	1.4	0.0	0.0#



#81
 trans-1,4-Dichloro-2-butene
 Concen: 117.691 ug/l
 RT: 12.64 min Scan# 1822
 Delta R.T. 0.11 min
 Lab File: VD064223.D
 Acq: 15 Nov 2019 13:11

Tgt Ion	Resp	Lower	Upper
75	100		
53	0.0	79.4	119.0#
89	0.0	36.6	55.0#

