

Data Path : Z:\voasrv\HPCHEM1\MSVOA\_D\Data\VD111521\  
 Data File : VD071027.D  
 Acq On : 15 Nov 2021 14:21  
 Operator : VA/SY  
 Sample : M4595-06  
 Misc : 6.93G/5.00ml/MSVOA\_D/SOIL  
 ALS Vial : 9 Sample Multiplier: 1

Instrument :  
 MSVOA\_D  
 ClientSampleId :  
 CMC-ICS-TC-002-01-04

Integration Parameters: RTEINT.P

Integrator: RTE  
 Smoothing : ON Filtering: 5  
 Sampling : 1 Min Area: 3 % of largest Peak  
 Start Thrs: 0.2 Max Peaks: 100  
 Stop Thrs : 0 Peak Location: TOP

If leading or trailing edge < 100 prefer < Baseline drop else tangent >  
 Peak separation: 5

Method : Z:\voasrv\HPCHEM1\MSVOA\_D\Method\82D110921S.M  
 Title : SW846 8260

Signal : TIC: VD071027.D\data.ms

peak #	R.T. min	first scan	max scan	last scan	PK TY	peak height	corr. area	corr. % max.	% of total
1	4.156	371	380	389	rBV	26525	71109	4.05%	0.755%
2	4.415	415	424	433	rBV2	11069	31158	1.77%	0.331%
3	7.914	1009	1019	1024	rBV	208264	493682	28.10%	5.239%
4	7.979	1024	1030	1040	rVB	407331	903270	51.41%	9.585%
5	8.332	1081	1090	1100	rBV	210481	475136	27.04%	5.042%
6	8.861	1171	1180	1189	rBV	607855	1238896	70.51%	13.146%
7	10.338	1422	1431	1441	rBV	968779	1756970	100.00%	18.644%
8	11.638	1643	1652	1665	rBV	938400	1599136	91.02%	16.969%
9	12.479	1788	1795	1801	rBV2	46214	75914	4.32%	0.806%
10	12.626	1813	1820	1829	rVV	739319	1253518	71.35%	13.301%
11	13.561	1973	1979	1987	rBV	867580	1483768	84.45%	15.745%
12	13.632	1987	1991	1994	rVV6	12483	22936	1.31%	0.243%
13	14.461	2124	2132	2138	rBV7	7901	18528	1.05%	0.197%

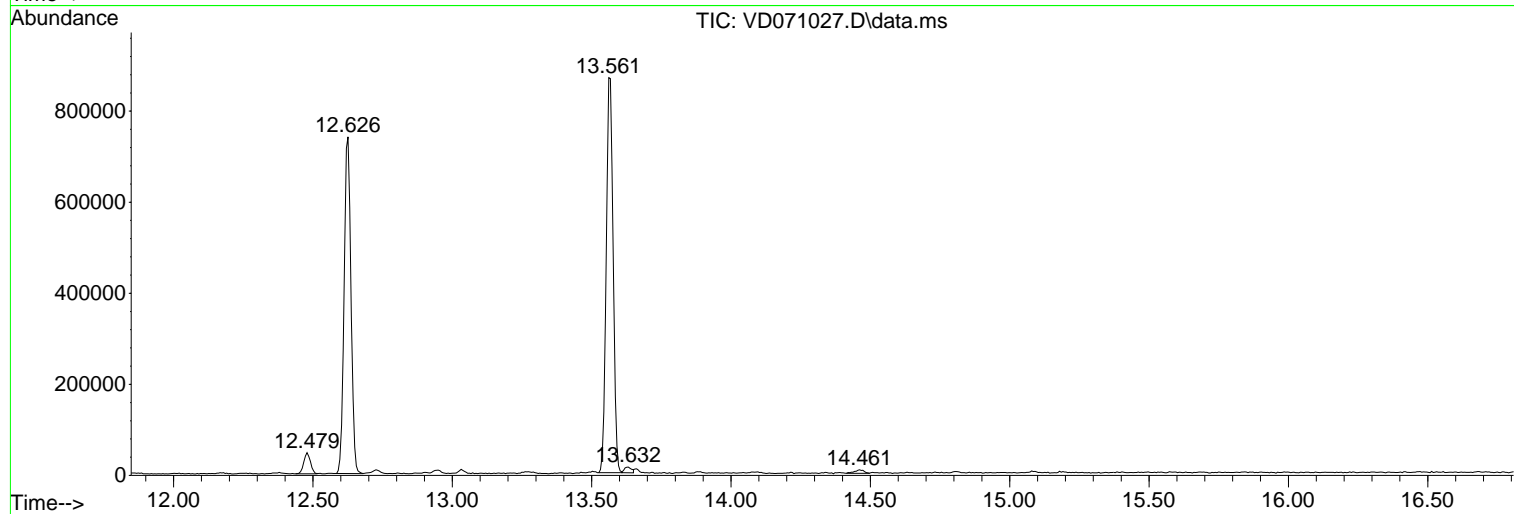
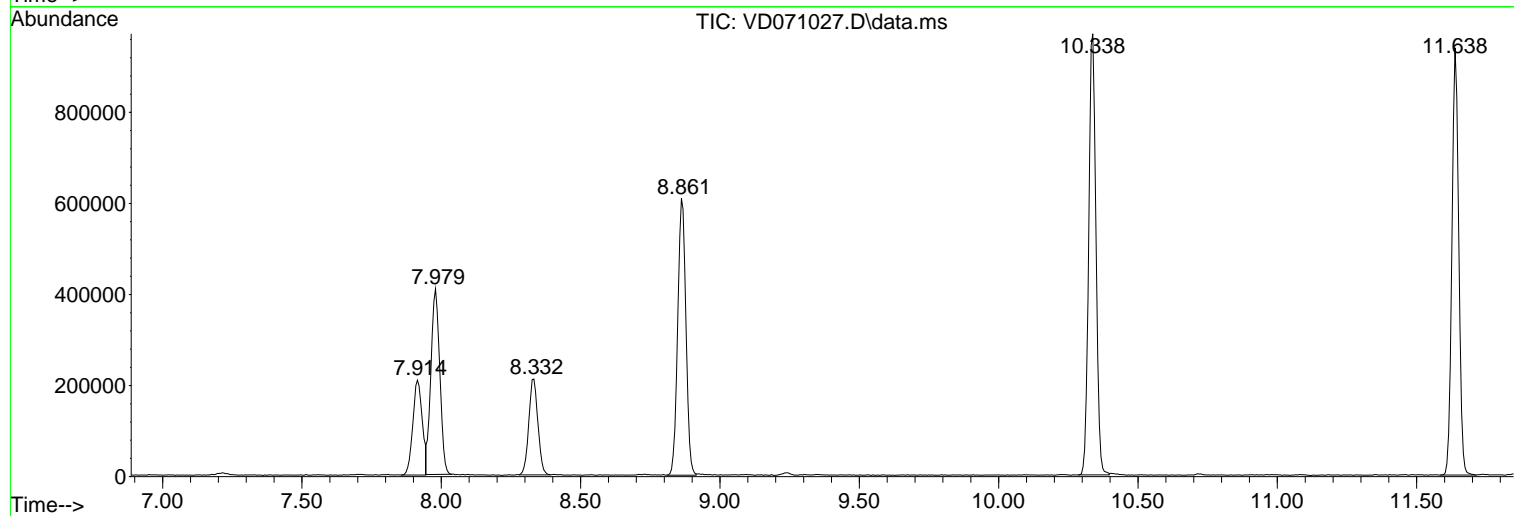
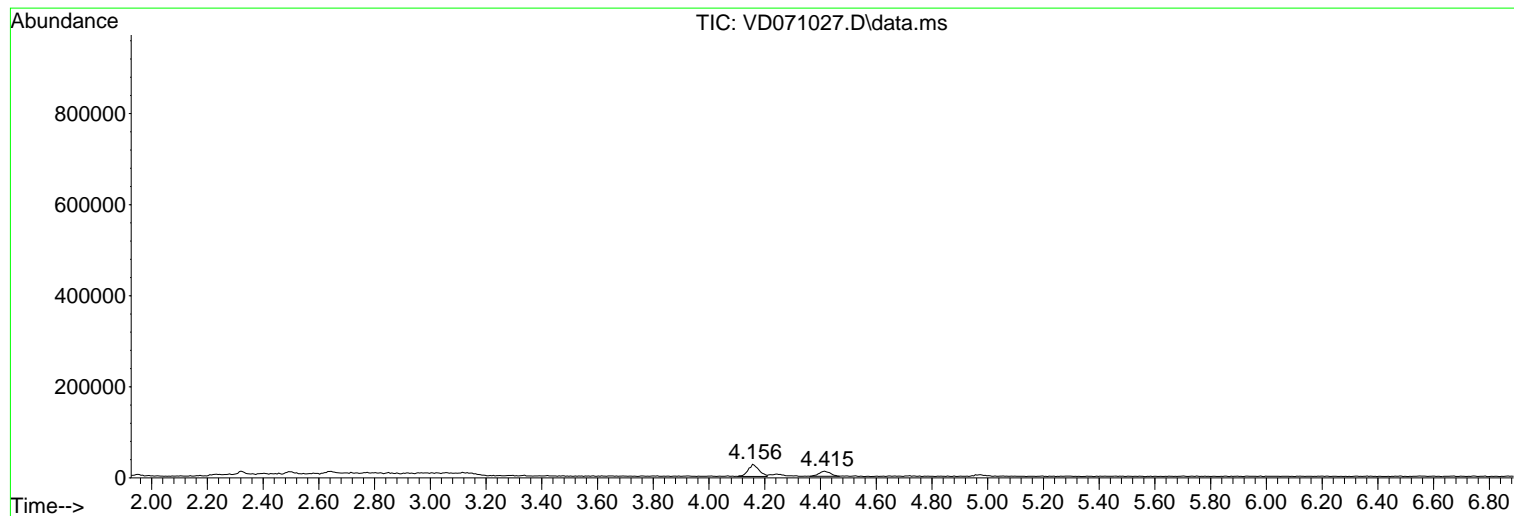
Sum of corrected areas: 9424021

Data Path : Z:\voasrv\HPCHEM1\MSVOA\_D\Data\VD111521\  
Data File : VD071027.D  
Acq On : 15 Nov 2021 14:21  
Operator : VA/SY  
Sample : M4595-06  
Misc : 6.93G/5.00ml/MSVOA\_D/SOIL  
ALS Vial : 9 Sample Multiplier: 1

Instrument :  
MSVOA\_D  
ClientSampleId :  
CMC-ICS-TC-002-01-04

Quant Method : Z:\voasrv\HPCHEM1\MSVOA\_D\Method\82D110921S.M  
Quant Title : SW846 8260

TIC Library : C:\Database\NIST20.L  
TIC Integration Parameters: LSCINT.P



Library Search Compound Report

Data Path : Z:\voasrv\HPCHEM1\MSVOA\_D\Data\VD111521\  
Data File : VD071027.D  
Acq On : 15 Nov 2021 14:21  
Operator : VA/SY  
Sample : M4595-06  
Misc : 6.93G/5.00ml/MSVOA\_D/SOIL  
ALS Vial : 9 Sample Multiplier: 1

Instrument :  
MSVOA\_D  
ClientSampleId :  
CMC-ICS-TC-002-01-04

Quant Method : Z:\voasrv\HPCHEM1\MSVOA\_D\Method\82D110921S.M  
Quant Title : SW846 8260

TIC Library : C:\Database\NIST20.L  
TIC Integration Parameters: LSCINT.P

No Library Search Compounds Detected

\*\*\*\*\*

Data Path : Z:\voasrv\HPCHEM1\MSVOA\_D\Data\VD111521\  
Data File : VD071027.D  
Acq On : 15 Nov 2021 14:21  
Operator : VA/SY  
Sample : M4595-06  
Misc : 6.93G/5.00ml/MSVOA\_D/SOIL  
ALS Vial : 9 Sample Multiplier: 1

Instrument :  
MSVOA\_D  
ClientSampleId :  
CMC-ICS-TC-002-01-04

Quant Method : Z:\voasrv\HPCHEM1\MSVOA\_D\Method\82D110921S.M  
Quant Title : SW846 8260

TIC Library : C:\Database\NIST0.L  
TIC Integration Parameters: LSCINT.P

TIC Top Hit name	RT	EstConc	Units	Response	--Internal Standard--			
					#	RT	Resp	Conc

---