

Data Path : Z:\voasrv\HPCHEM1\MSVOA\_D\Data\VD111623\  
 Data File : VD077591.D  
 Acq On : 16 Nov 2023 14:51  
 Operator : JC/SY  
 Sample : 05437-05  
 Misc : 4.48G/10ml/MSVOA\_D/SOIL  
 ALS Vial : 13 Sample Multiplier: 1

Instrument :  
 MSVOA\_D  
 ClientSampleId :  
 EY1E4

Quant Time: Nov 17 00:31:11 2023  
 Quant Method : Z:\voasrv\HPCHEM1\MSVOA\_D\Method\SFAMDLM110923SMA.M  
 Quant Title : SFAM01.0  
 QLast Update : Fri Nov 10 02:07:44 2023  
 Response via : Initial Calibration

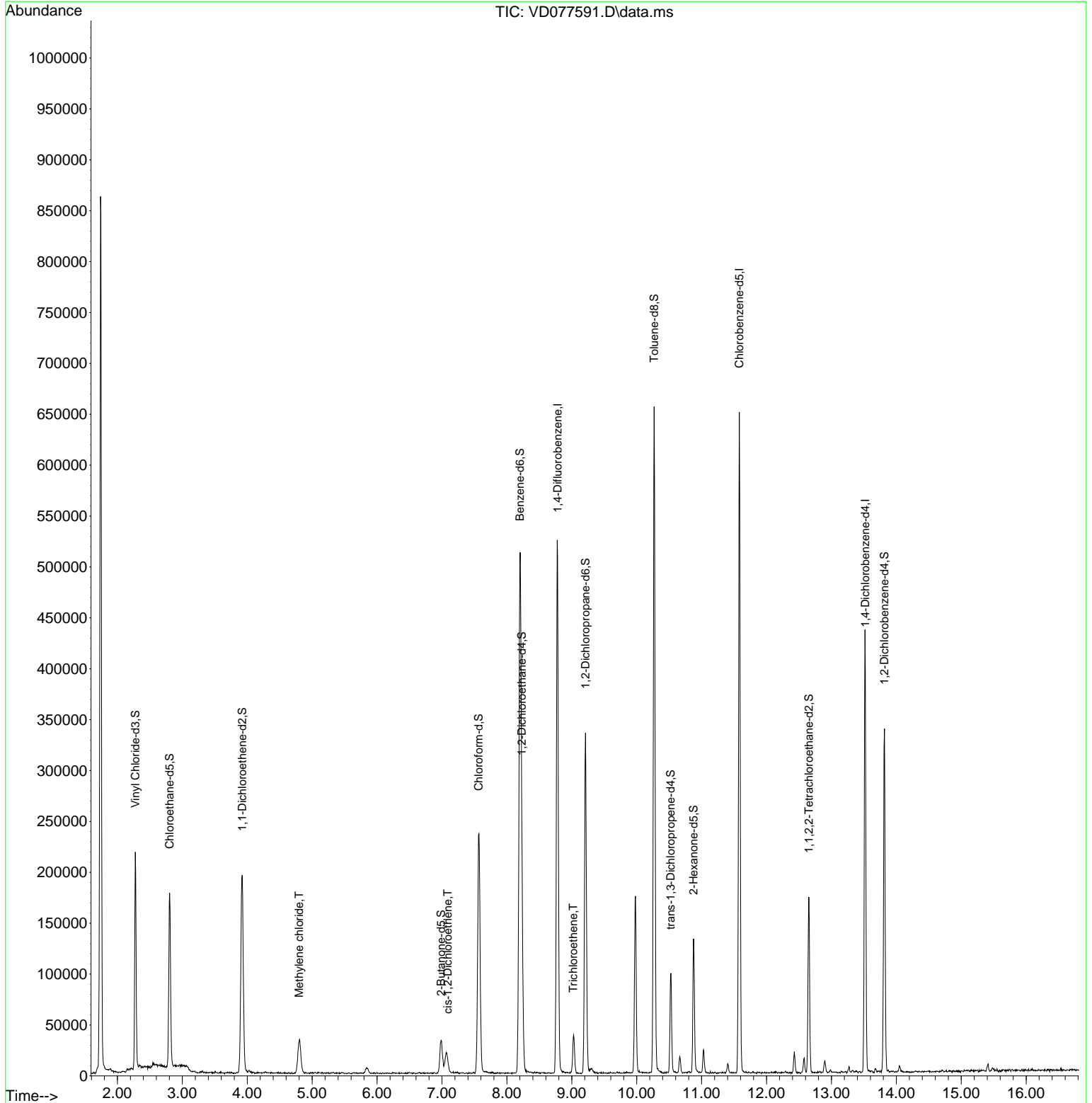
Compound	R.T.	QIon	Response	Conc	Units	Dev(Min)
Internal Standards						
1) 1,4-Difluorobenzene	8.781	114	433774	25.000	ug/L	0.00
28) Chlorobenzene-d5	11.581	117	342887	25.000	ug/L	0.00
58) 1,4-Dichlorobenzene-d4	13.522	152	110968	25.000	ug/L	0.00
System Monitoring Compounds						
4) Vinyl Chloride-d3	2.275	65	197271	17.878	ug/L	0.00
Spiked Amount	25.000	Range 30 - 150	Recovery =	71.520%		
7) Chloroethane-d5	2.805	69	175078	20.197	ug/L	0.00
Spiked Amount	25.000	Range 30 - 150	Recovery =	80.800%		
11) 1,1-Dichloroethene-d2	3.922	65	60686	17.786	ug/L	0.00
Spiked Amount	25.000	Range 45 - 110	Recovery =	71.160%		
21) 2-Butanone-d5	6.987	46	60622	31.732	ug/L	0.00
Spiked Amount	50.000	Range 20 - 135	Recovery =	63.460%		
24) Chloroform-d	7.563	84	244966	19.549	ug/L	0.00
Spiked Amount	25.000	Range 40 - 150	Recovery =	78.200%		
26) 1,2-Dichloroethane-d4	8.228	65	126330	18.953	ug/L	0.00
Spiked Amount	25.000	Range 70 - 130	Recovery =	75.800%		
32) Benzene-d6	8.199	84	513030	23.053	ug/L	0.00
Spiked Amount	25.000	Range 20 - 135	Recovery =	92.200%		
36) 1,2-Dichloropropane-d6	9.210	67	161977	22.345	ug/L	0.00
Spiked Amount	25.000	Range 70 - 120	Recovery =	89.360%		
41) Toluene-d8	10.269	98	436441	21.703	ug/L	0.00
Spiked Amount	25.000	Range 30 - 130	Recovery =	86.800%		
43) trans-1,3-Dichloroprop...	10.522	79	58045	18.571	ug/L	0.00
Spiked Amount	25.000	Range 30 - 135	Recovery =	74.280%		
47) 2-Hexanone-d5	10.875	63	44963	34.673	ug/L	0.00
Spiked Amount	50.000	Range 20 - 135	Recovery =	69.340%		
56) 1,1,2,2-Tetrachloroeth...	12.651	84	90873	18.921	ug/L	0.00
Spiked Amount	25.000	Range 45 - 120	Recovery =	75.680%		
66) 1,2-Dichlorobenzene-d4	13.816	152	85579	21.678	ug/L	0.00
Spiked Amount	25.000	Range 75 - 120	Recovery =	86.720%		
Target Compounds						
16) Methylene chloride	4.799	84	24084	3.288	ug/L	95
20) cis-1,2-Dichloroethene	7.087	96	3157	0.448	ug/L	92
34) Trichloroethene	9.022	95	13317	2.260	ug/L	94

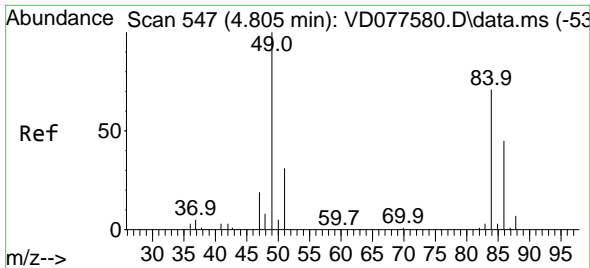
(#) = qualifier out of range (m) = manual integration (+) = signals summed

Data Path : Z:\voasrv\HPCHEM1\MSVOA\_D\Data\VD111623\  
 Data File : VD077591.D  
 Acq On : 16 Nov 2023 14:51  
 Operator : JC/SY  
 Sample : 05437-05  
 Misc : 4.48G/10ml/MSVOA\_D/SOIL  
 ALS Vial : 13 Sample Multiplier: 1

Instrument :  
 MSVOA\_D  
 ClientSampleId :  
 EY1E4

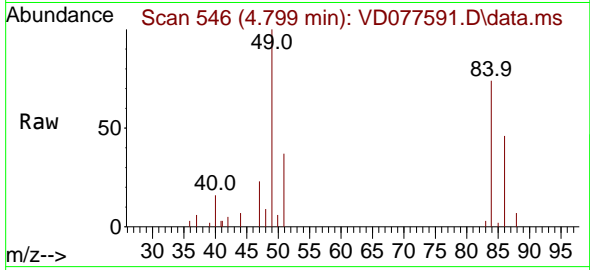
Quant Time: Nov 17 00:31:11 2023  
 Quant Method : Z:\voasrv\HPCHEM1\MSVOA\_D\Method\SFAMDLM110923SMA.M  
 Quant Title : SFAM01.0  
 QLast Update : Fri Nov 10 02:07:44 2023  
 Response via : Initial Calibration





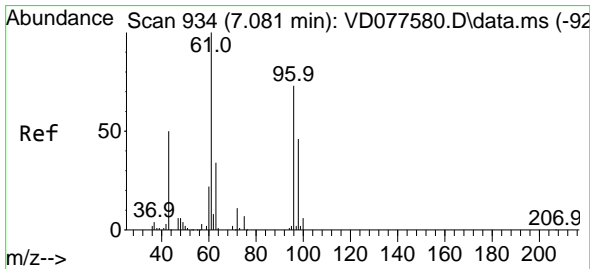
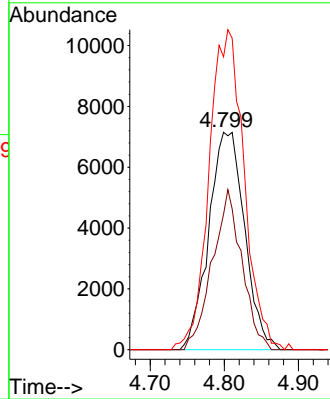
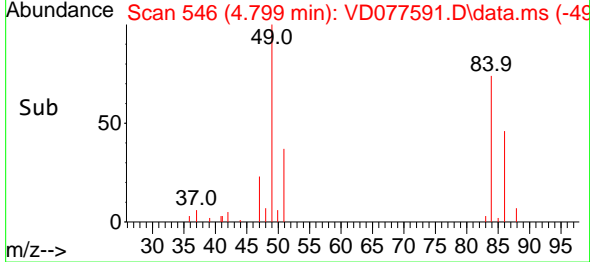
#16  
 Methylene chloride  
 Concen: 3.288 ug/L  
 RT: 4.799 min Scan# 54  
 Delta R.T. -0.006 min  
 Lab File: VD077591.D  
 Acq: 16 Nov 2023 14:51

Instrument :  
 MSVOA\_D  
 ClientSampleId :  
 EY1E4

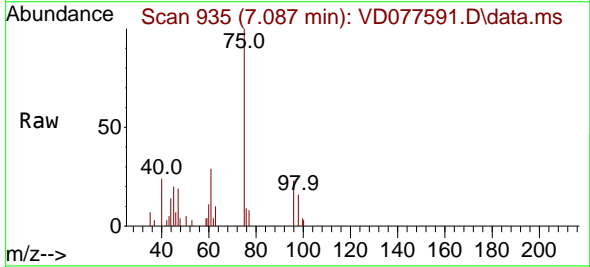


Tgt Ion: 84 Resp: 24084

Ion	Ratio	Lower	Upper
84	100		
86	62.3	46.5	86.5
49	134.7	98.3	182.7

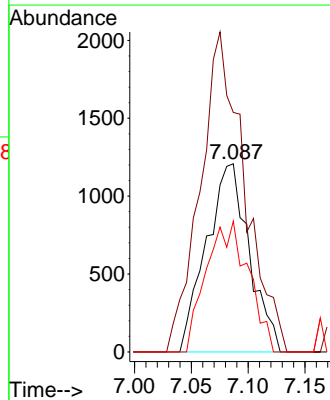
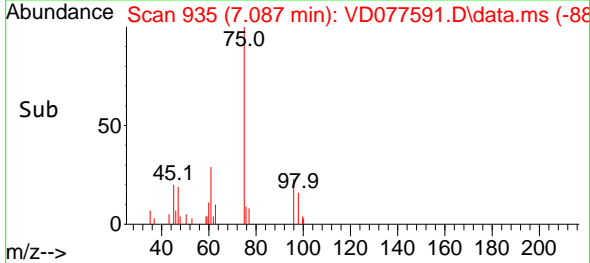


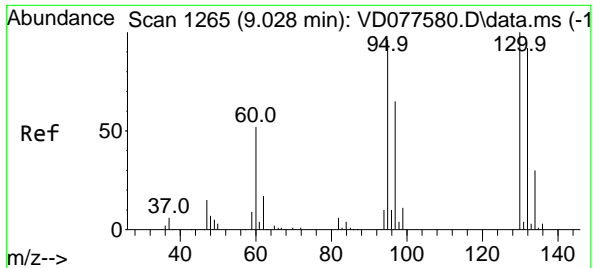
#20  
 cis-1,2-Dichloroethene  
 Concen: 0.448 ug/L  
 RT: 7.087 min Scan# 935  
 Delta R.T. 0.006 min  
 Lab File: VD077591.D  
 Acq: 16 Nov 2023 14:51



Tgt Ion: 96 Resp: 3157

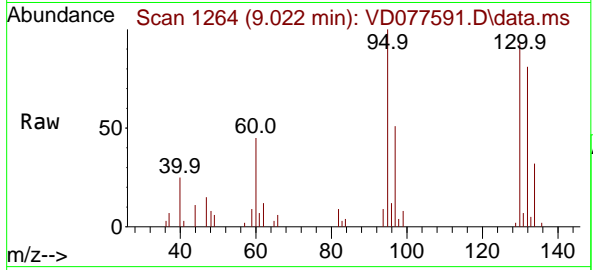
Ion	Ratio	Lower	Upper
96	100		
61	127.2	95.0	176.4
98	69.5	43.1	80.1





#34  
 Trichloroethene  
 Concen: 2.260 ug/L  
 RT: 9.022 min Scan# 11  
 Delta R.T. -0.006 min  
 Lab File: VD077591.D  
 Acq: 16 Nov 2023 14:51

Instrument : MSVOA\_D  
 ClientSampleId : EY1E4



Tgt Ion: 95 Resp: 13317

Ion	Ratio	Lower	Upper
95	100		
97	51.0	42.4	78.6
132	81.3	59.4	110.2
130	93.0	62.5	116.1

