

Data Path : Z:\voasrv\HPCHEM1\MSVOA_D\Data\VD111723\
 Data File : VD077605.D
 Acq On : 17 Nov 2023 11:28
 Operator : JC/SY
 Sample : 05437-03MSD
 Misc : 5.69G/10ml/MSVOA_D/SOIL
 ALS Vial : 2 Sample Multiplier: 1

Instrument :
 MSVOA_D
 ClientSampleId :

Quant Time: Nov 18 00:34:57 2023
 Quant Method : Z:\voasrv\HPCHEM1\MSVOA_D\Method\SFAMDLM110923SMA.M
 Quant Title : SFAM01.0
 QLast Update : Sat Nov 18 00:25:31 2023
 Response via : Initial Calibration

Compound	R.T.	QIon	Response	Conc	Units	Dev(Min)
Internal Standards						
1) 1,4-Difluorobenzene	8.781	114	222655	25.000	ug/L	0.00
28) Chlorobenzene-d5	11.581	117	215364	25.000	ug/L	0.00
58) 1,4-Dichlorobenzene-d4	13.516	152	103565	25.000	ug/L	0.00
System Monitoring Compounds						
4) Vinyl Chloride-d3	2.275	65	96932	17.114	ug/L	0.00
Spiked Amount	25.000	Range 30 - 150	Recovery =	68.440%		
7) Chloroethane-d5	2.805	69	90702	20.385	ug/L	0.00
Spiked Amount	25.000	Range 30 - 150	Recovery =	81.520%		
11) 1,1-Dichloroethene-d2	3.917	65	29096	16.613	ug/L	0.00
Spiked Amount	25.000	Range 45 - 110	Recovery =	66.440%		
21) 2-Butanone-d5	6.993	46	68583	69.937	ug/L	0.00
Spiked Amount	50.000	Range 20 - 135	Recovery =	139.880%#		
24) Chloroform-d	7.569	84	150995	23.476	ug/L	0.00
Spiked Amount	25.000	Range 40 - 150	Recovery =	93.920%		
26) 1,2-Dichloroethane-d4	8.234	65	93285	27.266	ug/L	0.00
Spiked Amount	25.000	Range 70 - 130	Recovery =	109.080%		
32) Benzene-d6	8.205	84	276274	19.765	ug/L	0.00
Spiked Amount	25.000	Range 20 - 135	Recovery =	79.080%		
36) 1,2-Dichloropropane-d6	9.210	67	102055	22.415	ug/L	0.00
Spiked Amount	25.000	Range 70 - 120	Recovery =	89.640%		
41) Toluene-d8	10.269	98	243755	19.298	ug/L	0.00
Spiked Amount	25.000	Range 30 - 130	Recovery =	77.200%		
43) trans-1,3-Dichloroprop...	10.528	79	47463	24.177	ug/L	0.00
Spiked Amount	25.000	Range 30 - 135	Recovery =	96.720%		
47) 2-Hexanone-d5	10.875	63	51829	63.634	ug/L	0.00
Spiked Amount	50.000	Range 20 - 135	Recovery =	127.260%		
56) 1,1,2,2-Tetrachloroeth...	12.651	84	95829	31.767	ug/L	0.00
Spiked Amount	25.000	Range 45 - 120	Recovery =	127.080%#		
66) 1,2-Dichlorobenzene-d4	13.816	152	87429	23.730	ug/L	0.00
Spiked Amount	25.000	Range 75 - 120	Recovery =	94.920%		
Target Compounds						
2) Dichlorodifluoromethane	1.934	85	70199	19.577	ug/L	99
3) Chloromethane	2.152	50	108534	21.038	ug/L	99
5) Vinyl chloride	2.287	62	121460	20.859	ug/L	95
6) Bromomethane	2.699	94	71759	23.148	ug/L	94
8) Chloroethane	2.840	64	79707	22.019	ug/L	95
9) Trichlorofluoromethane	3.181	101	112849	21.296	ug/L	98
10) 1,1,2-Trichloro-1,2,2-...	3.975	101	65768	20.168	ug/L	98
12) 1,1-Dichloroethene	3.946	96	62547	19.754	ug/L	98
13) Acetone	4.028	43	93160	90.377	ug/L	99
14) Carbon disulfide	4.269	76	204577	17.943	ug/L	100
15) Methyl Acetate	4.564	43	51837	30.568	ug/L #	82
16) Methylene chloride	4.805	84	113403	30.166	ug/L	93
17) trans-1,2-Dichloroethene	5.316	96	68136	20.457	ug/L	99
18) Methyl tert-butyl Ether	5.322	73	220927	28.261	ug/L	99
19) 1,1-Dichloroethane	6.116	63	153836	23.020	ug/L	95
20) cis-1,2-Dichloroethene	7.081	96	84100	23.241	ug/L	98
22) 2-Butanone	7.081	43	82678	66.662	ug/L	100
23) Bromochloromethane	7.428	128	40817	28.072	ug/L	92
25) Chloroform	7.599	83	149390	24.335	ug/L	99

Data Path : Z:\voasrv\HPCHEM1\MSVOA_D\Data\VD111723\
 Data File : VD077605.D
 Acq On : 17 Nov 2023 11:28
 Operator : JC/SY
 Sample : 05437-03MSD
 Misc : 5.69G/10ml/MSVOA_D/SOIL
 ALS Vial : 2 Sample Multiplier: 1

Instrument :
 MSVOA_D
 ClientSampleId :

Quant Time: Nov 18 00:34:57 2023
 Quant Method : Z:\voasrv\HPCHEM1\MSVOA_D\Method\SFAMDLM110923SMA.M
 Quant Title : SFAM01.0
 QLast Update : Sat Nov 18 00:25:31 2023
 Response via : Initial Calibration

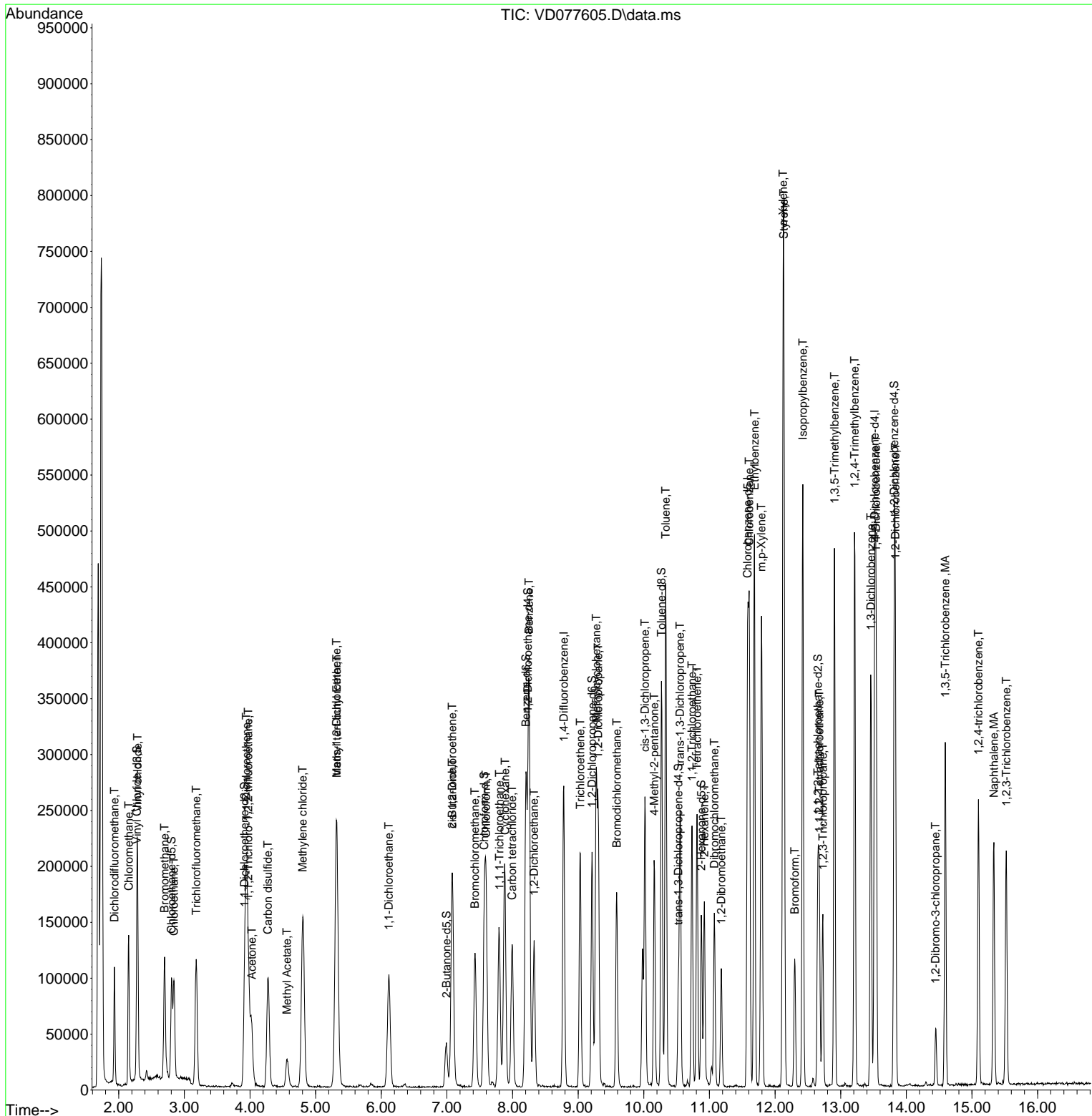
Compound	R.T.	QIon	Response	Conc	Units	Dev(Min)
27) 1,2-Dichloroethane	8.328	62	112232	27.579	ug/L	95
29) Cyclohexane	7.887	56	115333	16.494	ug/L	98
30) 1,1,1-Trichloroethane	7.799	97	115816	20.542	ug/L	98
31) Carbon tetrachloride	7.993	117	95877	19.788	ug/L	98
33) Benzene	8.252	78	313454	20.988	ug/L	100
34) Trichloroethene	9.034	95	75473	20.394	ug/L	95
35) Methylcyclohexane	9.275	83	109543	16.403	ug/L	98
37) 1,2-Dichloropropane	9.304	63	95615	23.030	ug/L	99
38) Bromodichloromethane	9.587	83	114664	24.077	ug/L #	95
39) cis-1,3-Dichloropropene	10.016	75	153158	24.006	ug/L	98
40) 4-Methyl-2-pentanone	10.157	43	142036	56.138	ug/L	99
42) Toluene	10.334	91	329282	21.000	ug/L	100
44) trans-1,3-Dichloropropene	10.551	75	136697	25.930	ug/L	97
45) 1,1,2-Trichloroethane	10.734	97	71632	28.225	ug/L	97
46) Tetrachloroethene	10.810	164	53120	19.509	ug/L	98
48) 2-Hexanone	10.922	43	111031	55.364	ug/L	99
49) Dibromochloromethane	11.075	129	76254	26.451	ug/L	100
50) 1,2-Dibromoethane	11.181	107	67152	27.669	ug/L	92
51) Chlorobenzene	11.604	112	204046	22.212	ug/L	98
52) Ethylbenzene	11.687	91	353675	20.499	ug/L	96
53) m,p-Xylene	11.793	106	131365	20.924	ug/L	94
54) o-Xylene	12.122	106	128892	21.435	ug/L	100
55) Styrene	12.134	104	237480	22.619	ug/L	98
57) 1,1,2,2-Tetrachloroethane	12.675	83	88011	29.438	ug/L	97
59) Bromoform	12.298	173	50191	28.425	ug/L #	98
60) Isopropylbenzene	12.422	105	334709	19.980	ug/L	99
61) 1,2,3-Trichloropropane	12.728	75	61736	27.985	ug/L	97
62) 1,3,5-Trimethylbenzene	12.904	105	255798	20.120	ug/L	100
63) 1,2,4-Trimethylbenzene	13.210	105	265474	20.613	ug/L	100
64) 1,3-Dichlorobenzene	13.457	146	147249	21.426	ug/L	98
65) 1,4-Dichlorobenzene	13.540	146	153307	22.104	ug/L	99
67) 1,2-Dichlorobenzene	13.834	146	139801	23.009	ug/L	94
68) 1,2-Dibromo-3-chloropr...	14.445	75	13332	27.784	ug/L	90
69) 1,3,5-Trichlorobenzene	14.592	180	89813	19.193	ug/L	99
70) 1,2,4-trichlorobenzene	15.098	180	76129	19.303	ug/L	99
71) Naphthalene	15.334	128	183120	24.637	ug/L	99
72) 1,2,3-Trichlorobenzene	15.522	180	68287	20.307	ug/L	99

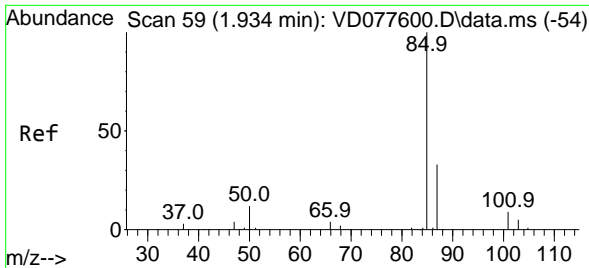
(#) = qualifier out of range (m) = manual integration (+) = signals summed

Data Path : Z:\voasrv\HPCHEM1\MSVOA_D\Data\VD111723\
 Data File : VD077605.D
 Acq On : 17 Nov 2023 11:28
 Operator : JC/SY
 Sample : 05437-03MSD
 Misc : 5.69G/10ml/MSVOA_D/SOIL
 ALS Vial : 2 Sample Multiplier: 1

Instrument :
 MSVOA_D
 ClientSampleId :

Quant Time: Nov 18 00:34:57 2023
 Quant Method : Z:\voasrv\HPCHEM1\MSVOA_D\Method\SFAMDLM110923SMA.M
 Quant Title : SFAM01.0
 QLast Update : Sat Nov 18 00:25:31 2023
 Response via : Initial Calibration

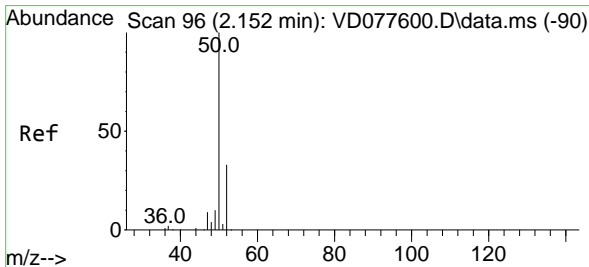
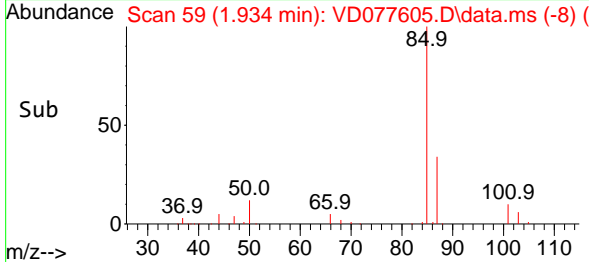
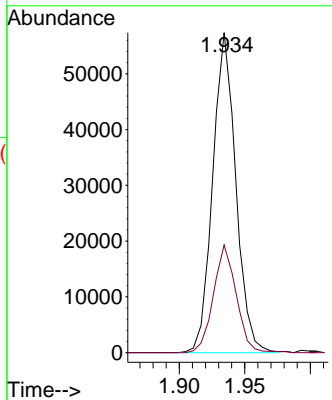
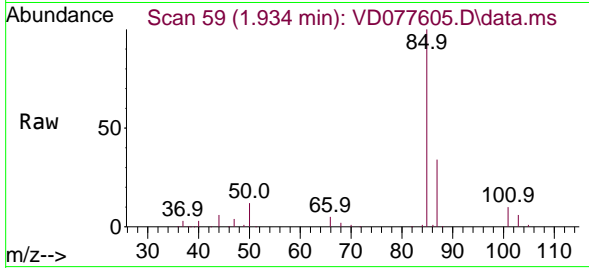




#2
 Dichlorodifluoromethane
 Concen: 19.577 ug/L
 RT: 1.934 min Scan# 59
 Delta R.T. -0.000 min
 Lab File: VD077605.D
 Acq: 17 Nov 2023 11:28

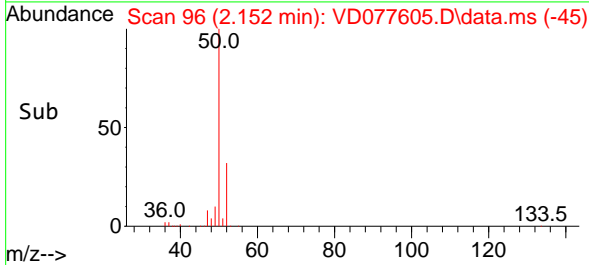
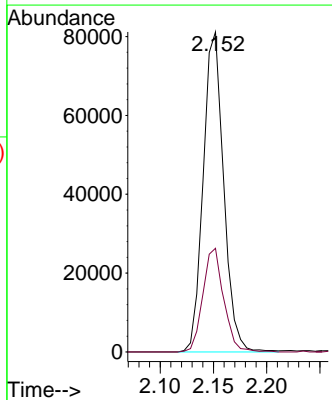
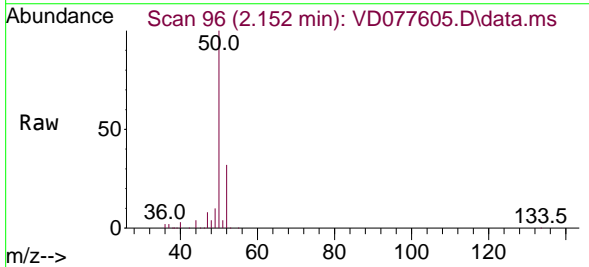
Instrument : MSVOA_D
 ClientSampleId :

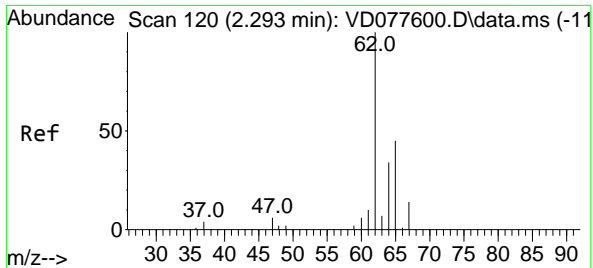
Tgt Ion: 85 Resp: 70199
 Ion Ratio Lower Upper
 85 100
 87 33.3 26.2 39.2



#3
 Chloromethane
 Concen: 21.038 ug/L
 RT: 2.152 min Scan# 96
 Delta R.T. -0.000 min
 Lab File: VD077605.D
 Acq: 17 Nov 2023 11:28

Tgt Ion: 50 Resp: 108534
 Ion Ratio Lower Upper
 50 100
 52 32.4 22.1 41.1

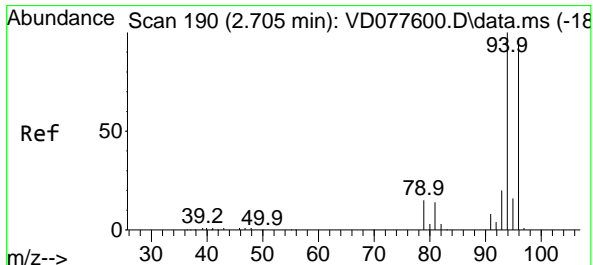
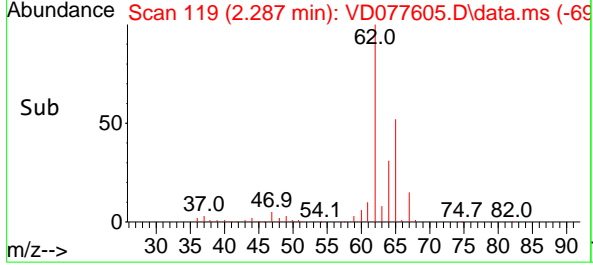
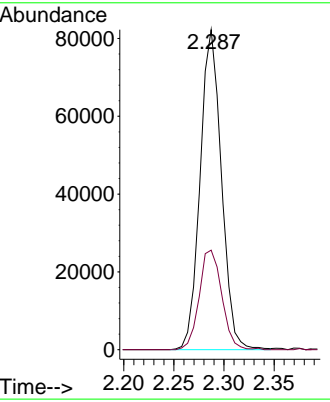
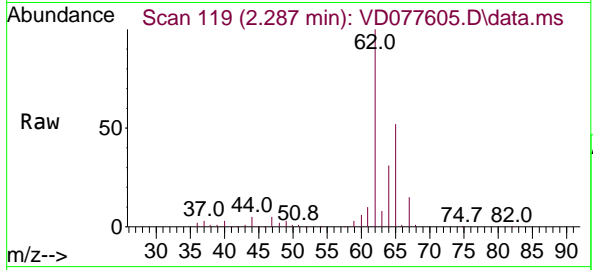




#5
 Vinyl chloride
 Concen: 20.859 ug/L
 RT: 2.287 min Scan# 119
 Delta R.T. -0.006 min
 Lab File: VD077605.D
 Acq: 17 Nov 2023 11:28

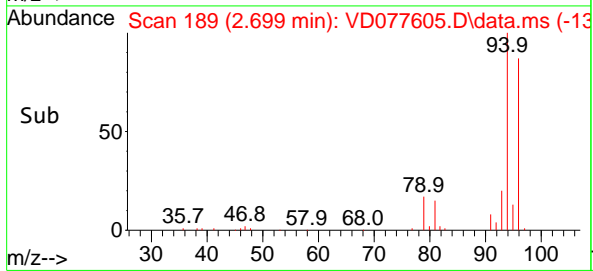
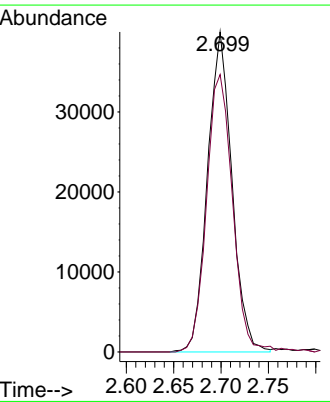
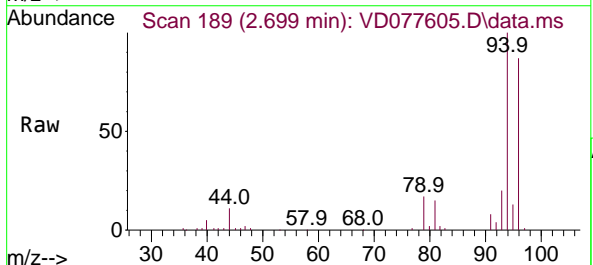
Instrument : MSVOA_D
 ClientSampleId :

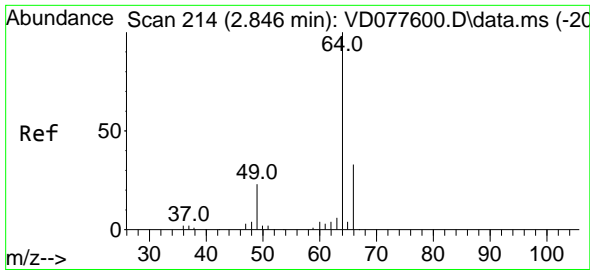
Tgt Ion: 62 Resp: 121460
 Ion Ratio Lower Upper
 62 100
 64 31.1 23.9 44.5



#6
 Bromomethane
 Concen: 23.148 ug/L
 RT: 2.699 min Scan# 189
 Delta R.T. -0.006 min
 Lab File: VD077605.D
 Acq: 17 Nov 2023 11:28

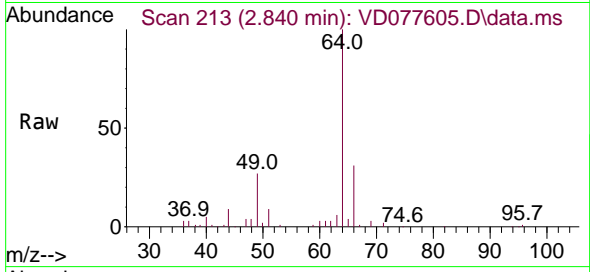
Tgt Ion: 94 Resp: 71759
 Ion Ratio Lower Upper
 94 100
 96 86.7 64.5 119.9



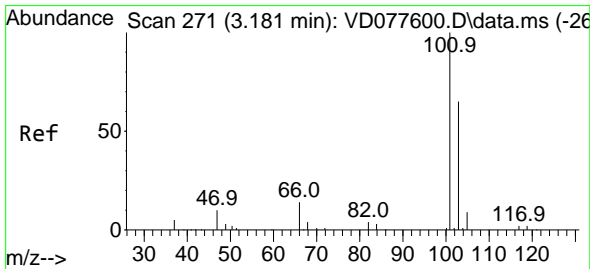
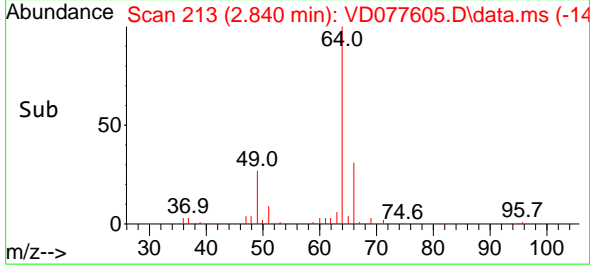
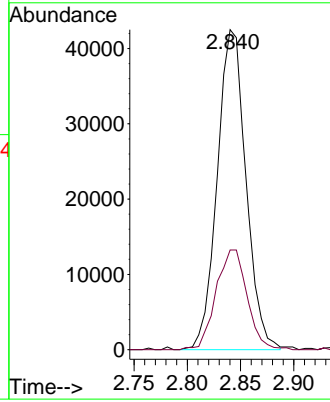


#8
 Chloroethane
 Concen: 22.019 ug/L
 RT: 2.840 min Scan# 214
 Delta R.T. -0.006 min
 Lab File: VD077605.D
 Acq: 17 Nov 2023 11:28

Instrument :
 MSVOA_D
 ClientSampleId :

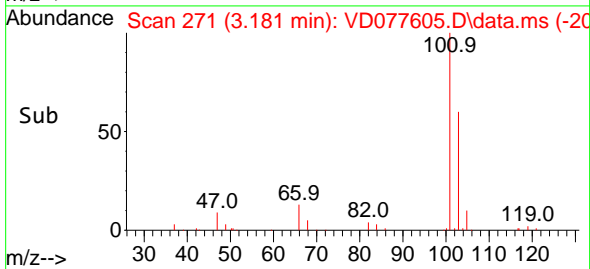
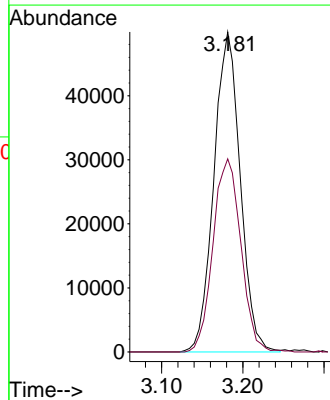
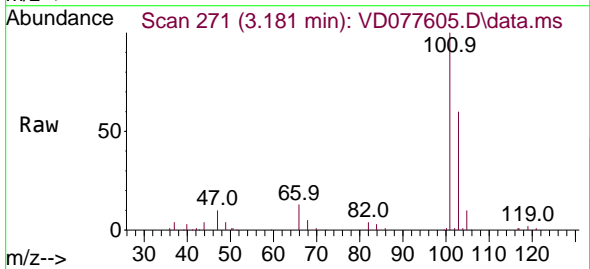


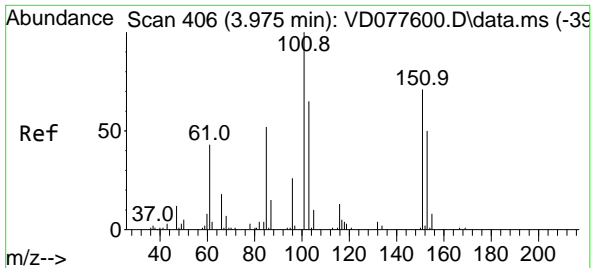
Tgt Ion: 64 Resp: 79707
 Ion Ratio Lower Upper
 64 100
 66 31.1 19.8 36.8



#9
 Trichlorofluoromethane
 Concen: 21.296 ug/L
 RT: 3.181 min Scan# 271
 Delta R.T. -0.000 min
 Lab File: VD077605.D
 Acq: 17 Nov 2023 11:28

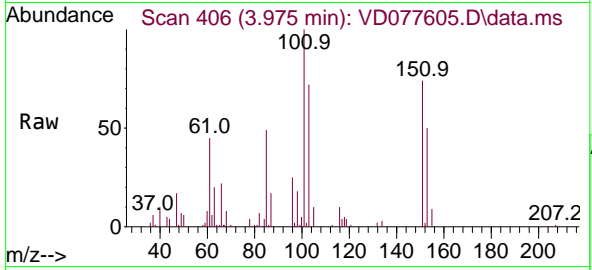
Tgt Ion: 101 Resp: 112849
 Ion Ratio Lower Upper
 101 100
 103 63.5 51.9 77.9





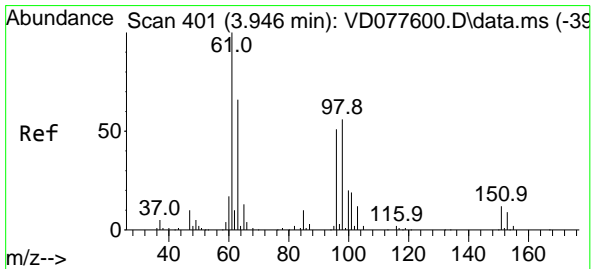
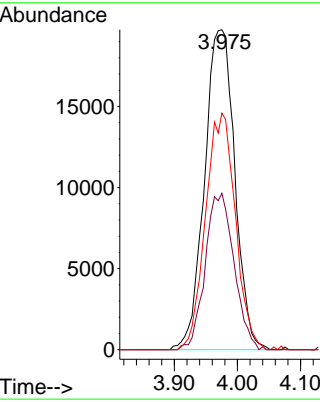
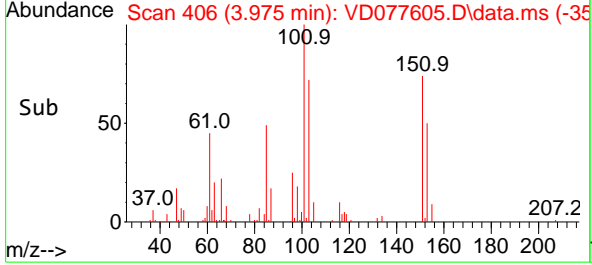
#10
 1,1,2-Trichloro-1,2,2-trifluoroethane
 Concen: 20.168 ug/L
 RT: 3.975 min Scan# 406
 Delta R.T. -0.000 min
 Lab File: VD077605.D
 Acq: 17 Nov 2023 11:28

Instrument : MSVOA_D
 ClientSampleId :

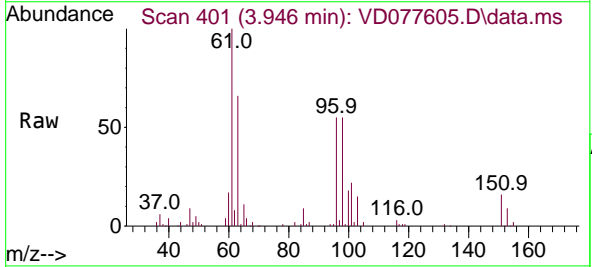


Tgt Ion: 101 Resp: 65768

Ion	Ratio	Lower	Upper
101	100		
85	45.9	36.8	55.2
151	72.8	56.6	84.8

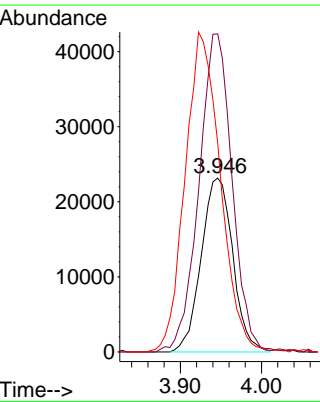
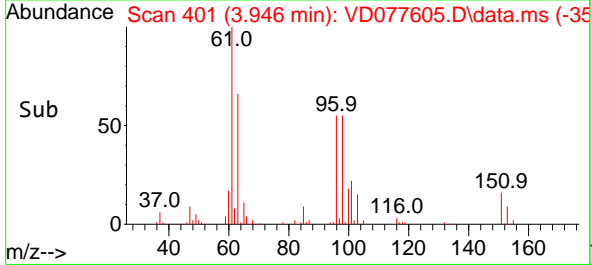


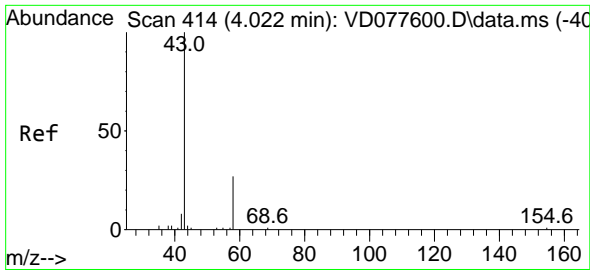
#12
 1,1-Dichloroethene
 Concen: 19.754 ug/L
 RT: 3.946 min Scan# 401
 Delta R.T. -0.000 min
 Lab File: VD077605.D
 Acq: 17 Nov 2023 11:28



Tgt Ion: 96 Resp: 62547

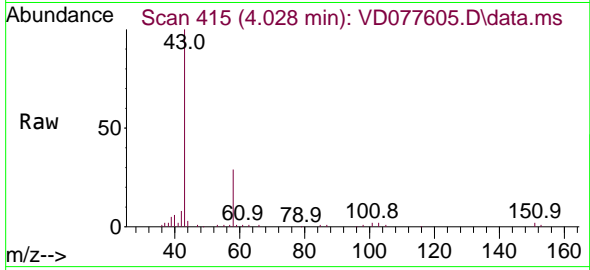
Ion	Ratio	Lower	Upper
96	100		
61	182.9	127.5	236.9
63	120.0	86.4	160.4



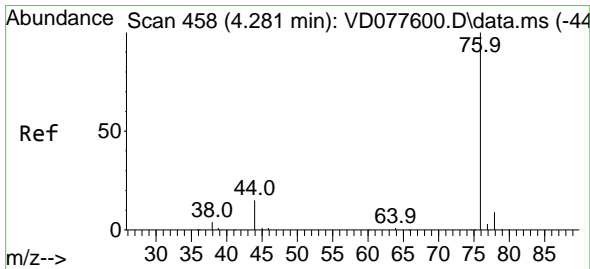
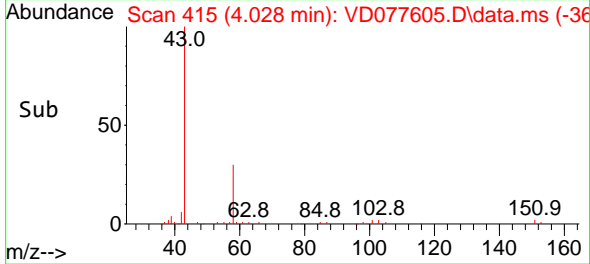
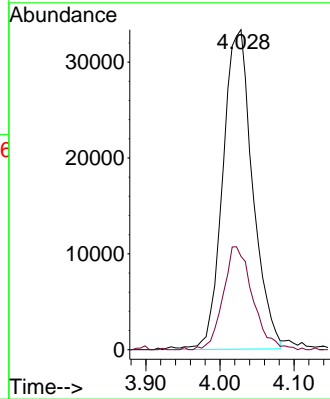


#13
 Acetone
 Concen: 90.377 ug/L
 RT: 4.028 min Scan# 413
 Delta R.T. 0.006 min
 Lab File: VD077605.D
 Acq: 17 Nov 2023 11:28

Instrument :
 MSVOA_D
 ClientSampleId :

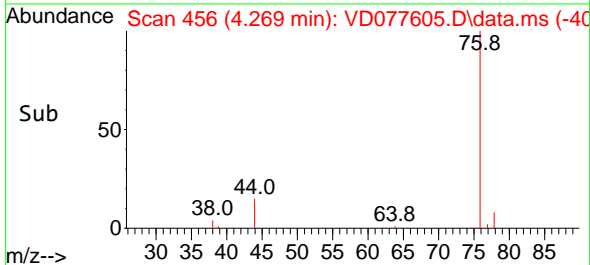
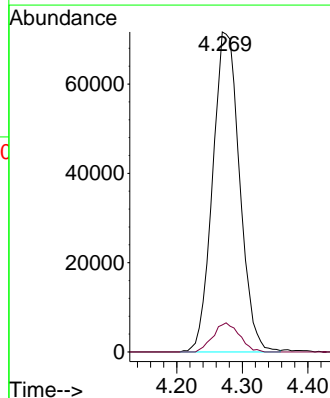
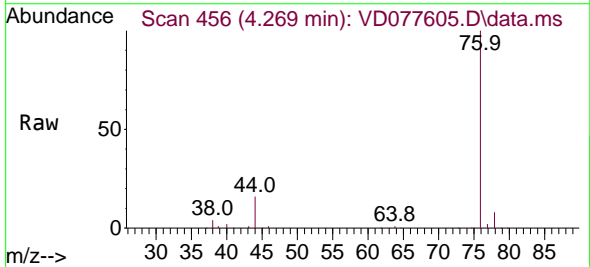


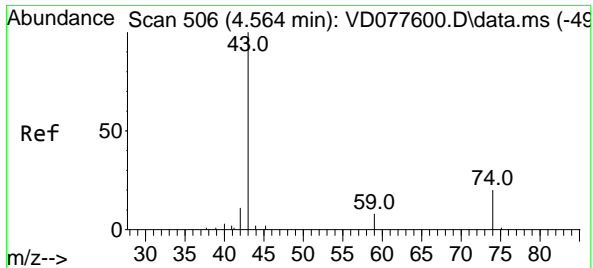
Tgt Ion: 43 Resp: 93160
 Ion Ratio Lower Upper
 43 100
 58 31.5 0.0 64.0



#14
 Carbon disulfide
 Concen: 17.943 ug/L
 RT: 4.269 min Scan# 456
 Delta R.T. -0.012 min
 Lab File: VD077605.D
 Acq: 17 Nov 2023 11:28

Tgt Ion: 76 Resp: 204577
 Ion Ratio Lower Upper
 76 100
 78 8.4 6.9 10.3

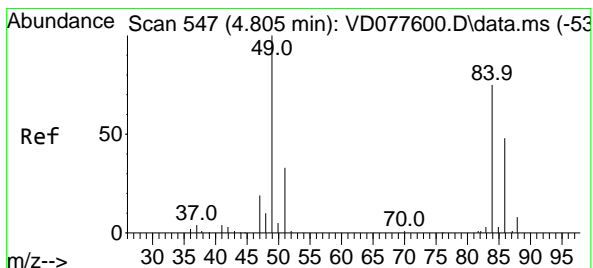
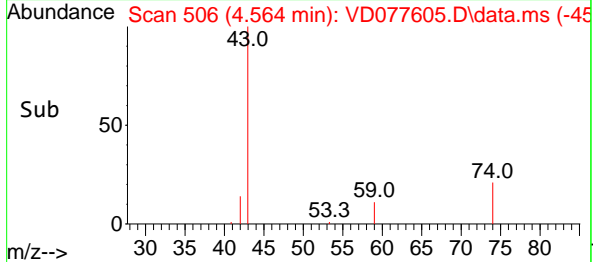
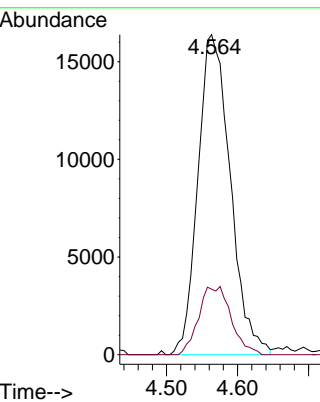
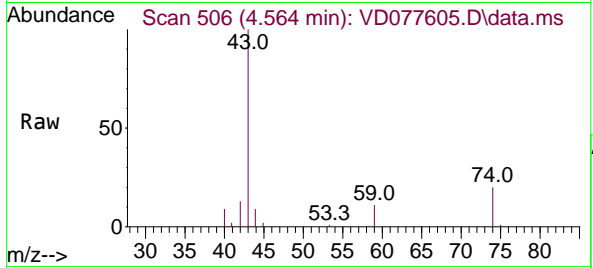




#15
 Methyl Acetate
 Concen: 30.568 ug/L
 RT: 4.564 min Scan# 506
 Delta R.T. -0.000 min
 Lab File: VD077605.D
 Acq: 17 Nov 2023 11:28

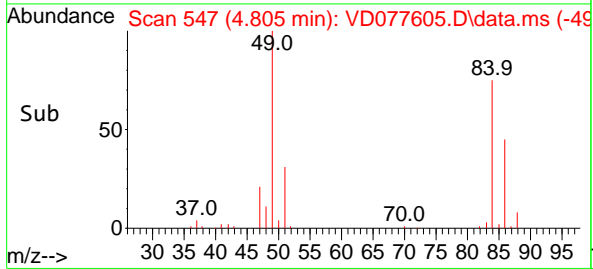
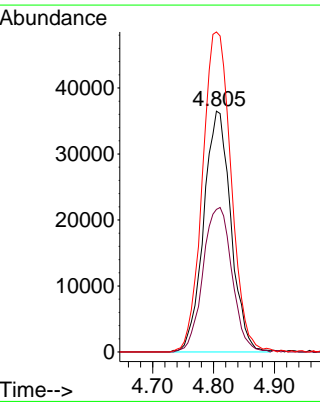
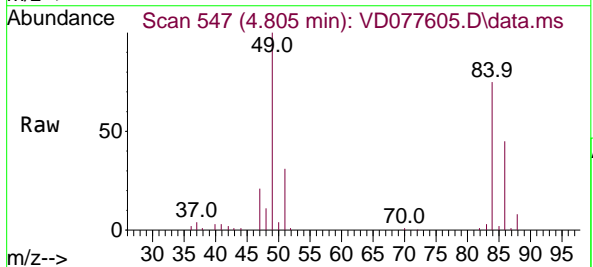
Instrument : MSVOA_D
 ClientSampleId :

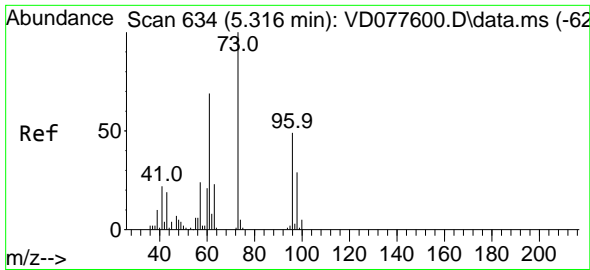
Tgt Ion: 43 Resp: 51837
 Ion Ratio Lower Upper
 43 100
 74 12.1 16.6 24.8#



#16
 Methylene chloride
 Concen: 30.166 ug/L
 RT: 4.805 min Scan# 547
 Delta R.T. -0.000 min
 Lab File: VD077605.D
 Acq: 17 Nov 2023 11:28

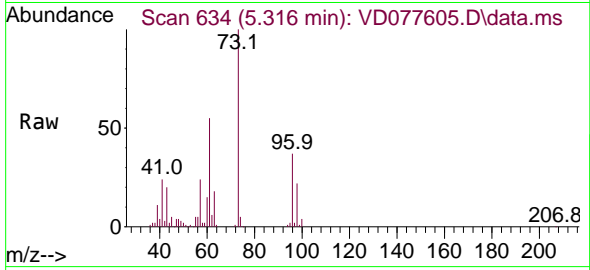
Tgt Ion: 84 Resp: 113403
 Ion Ratio Lower Upper
 84 100
 86 59.2 46.5 86.5
 49 132.9 98.3 182.7



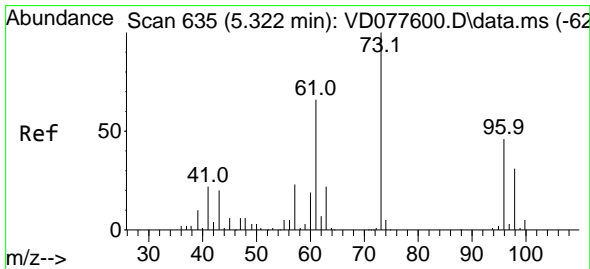
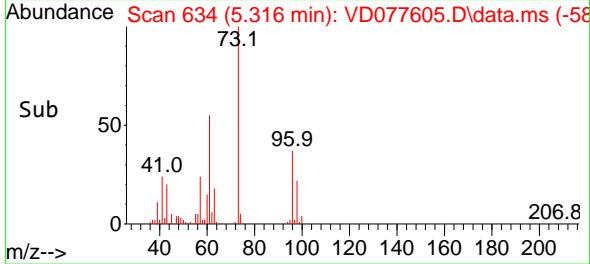
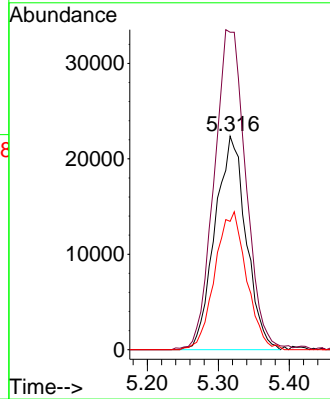


#17
 trans-1,2-Dichloroethene
 Concen: 20.457 ug/L
 RT: 5.316 min Scan# 61
 Delta R.T. -0.000 min
 Lab File: VD077605.D
 Acq: 17 Nov 2023 11:28

Instrument :
 MSVOA_D
 ClientSampleId :

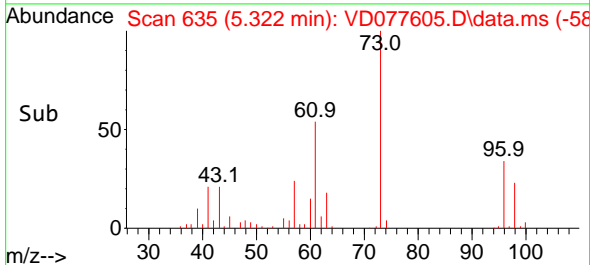
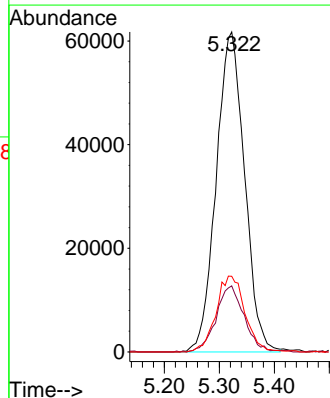
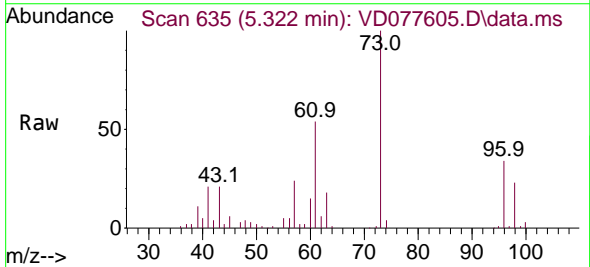


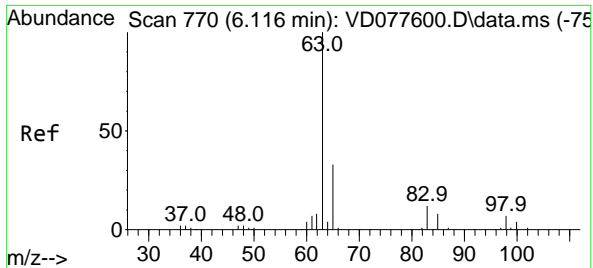
Tgt Ion: 96 Resp: 68136
 Ion Ratio Lower Upper
 96 100
 61 148.7 104.0 193.2
 98 60.1 43.1 80.1



#18
 Methyl tert-butyl Ether
 Concen: 28.261 ug/L
 RT: 5.322 min Scan# 635
 Delta R.T. -0.000 min
 Lab File: VD077605.D
 Acq: 17 Nov 2023 11:28

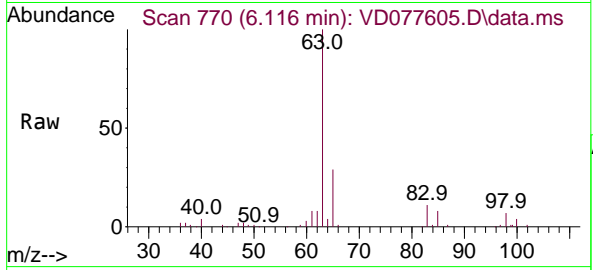
Tgt Ion: 73 Resp: 220927
 Ion Ratio Lower Upper
 73 100
 43 20.0 16.4 24.6
 57 24.2 19.3 28.9





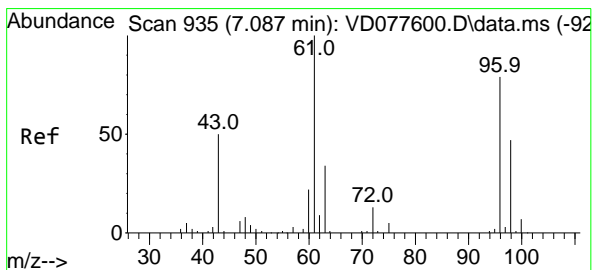
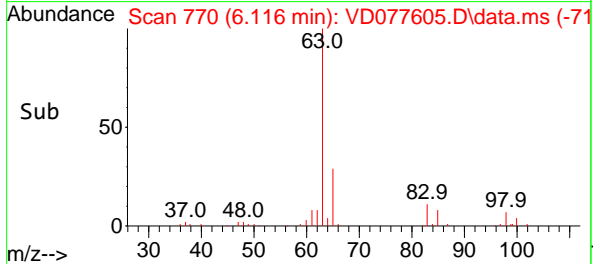
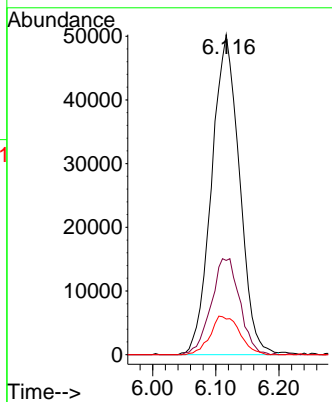
#19
 1,1-Dichloroethane
 Concen: 23.020 ug/L
 RT: 6.116 min Scan# 770
 Delta R.T. 0.000 min
 Lab File: VD077605.D
 Acq: 17 Nov 2023 11:28

Instrument :
 MSVOA_D
 ClientSampleId :



Tgt Ion: 63 Resp: 153836

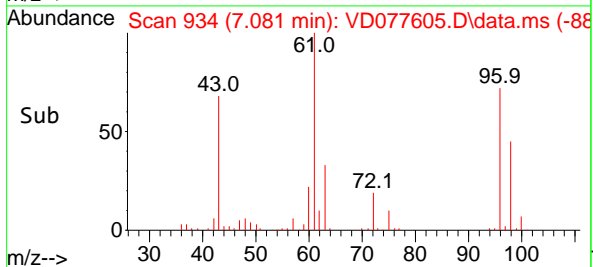
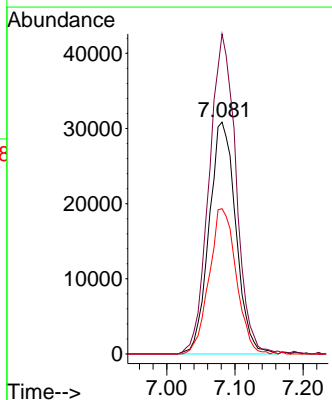
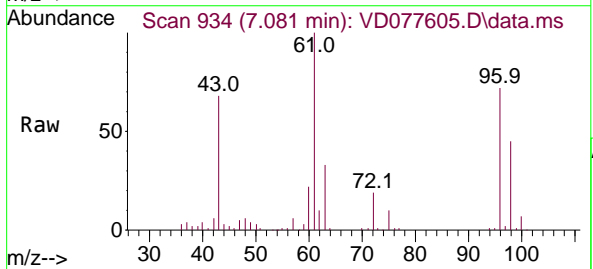
Ion	Ratio	Lower	Upper
63	100		
65	29.5	22.6	42.0
83	11.1	8.8	16.3

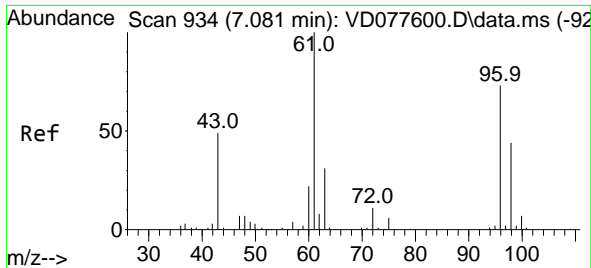


#20
 cis-1,2-Dichloroethene
 Concen: 23.241 ug/L
 RT: 7.081 min Scan# 934
 Delta R.T. -0.006 min
 Lab File: VD077605.D
 Acq: 17 Nov 2023 11:28

Tgt Ion: 96 Resp: 84100

Ion	Ratio	Lower	Upper
96	100		
61	138.0	95.0	176.4
98	62.7	43.1	80.1

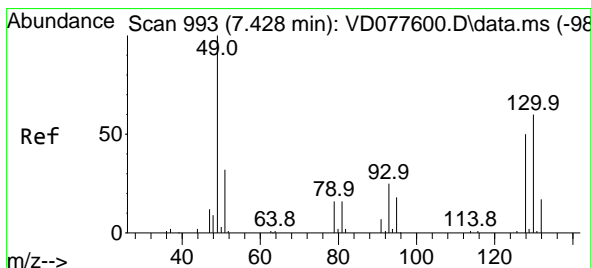
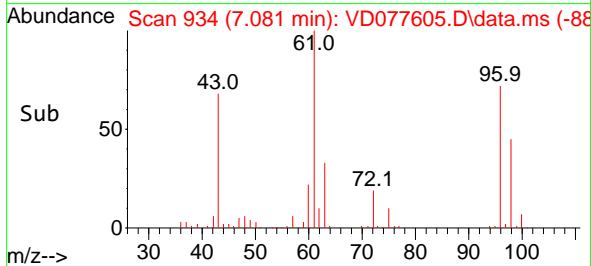
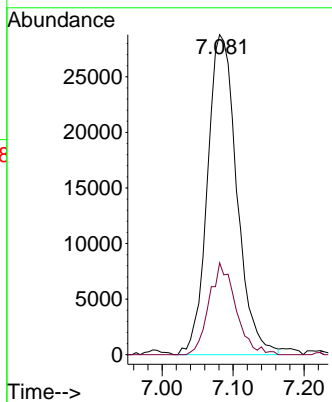
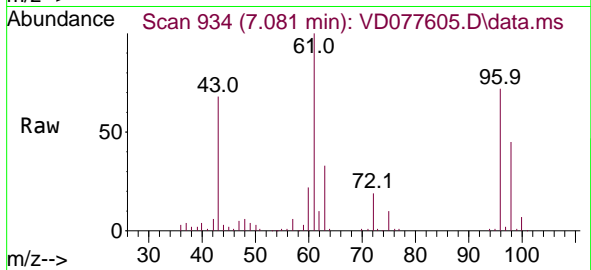




#22
 2-Butanone
 Concen: 66.662 ug/L
 RT: 7.081 min Scan# 911
 Delta R.T. -0.000 min
 Lab File: VD077605.D
 Acq: 17 Nov 2023 11:28

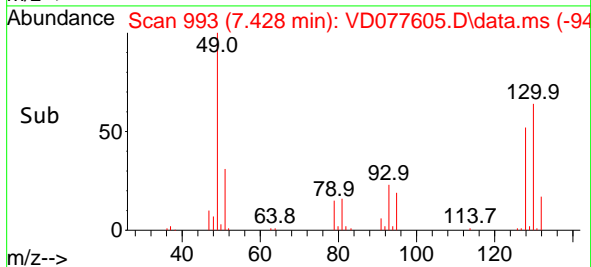
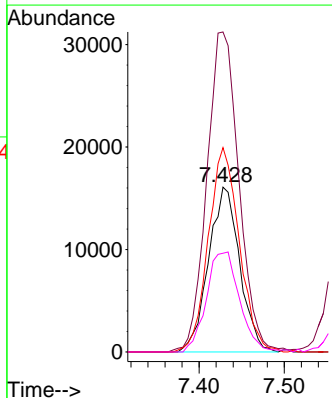
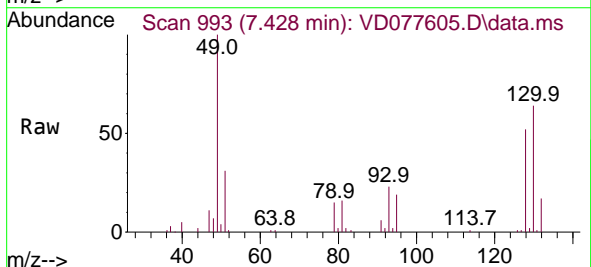
Instrument :
 MSVOA_D
 ClientSampleId :

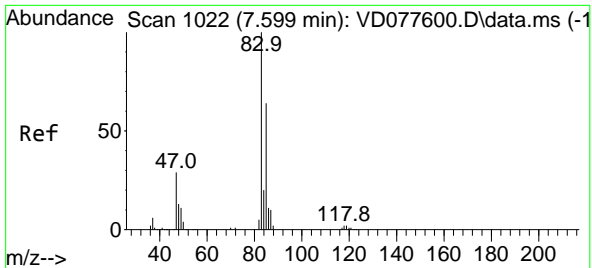
Tgt Ion: 43 Resp: 82678
 Ion Ratio Lower Upper
 43 100
 72 25.5 12.8 38.4



#23
 Bromochloromethane
 Concen: 28.072 ug/L
 RT: 7.428 min Scan# 993
 Delta R.T. -0.000 min
 Lab File: VD077605.D
 Acq: 17 Nov 2023 11:28

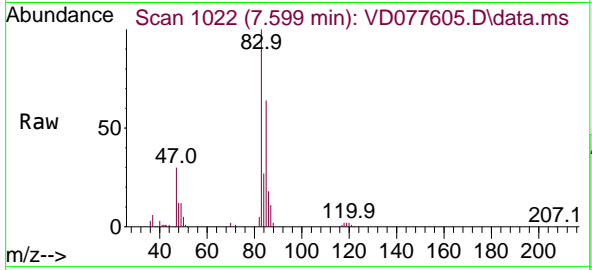
Tgt Ion:128 Resp: 40817
 Ion Ratio Lower Upper
 128 100
 49 194.1 146.7 272.5
 130 124.0 83.2 154.6
 51 59.9 53.3 79.9



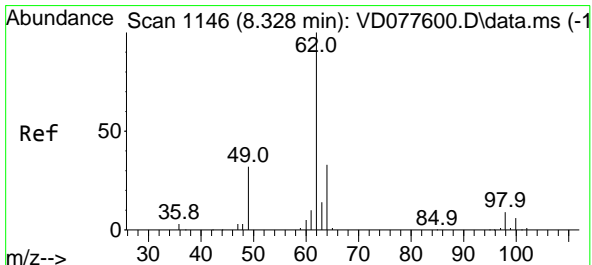
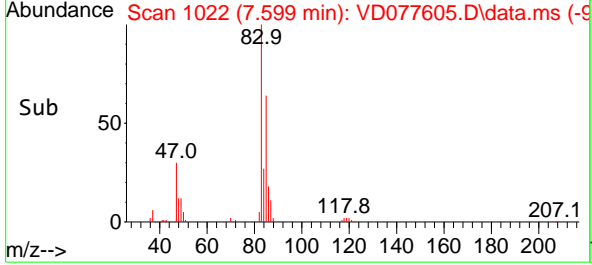
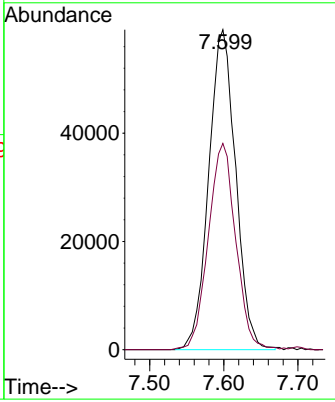


#25
 Chloroform
 Concen: 24.335 ug/L
 RT: 7.599 min Scan# 1022
 Delta R.T. -0.000 min
 Lab File: VD077605.D
 Acq: 17 Nov 2023 11:28

Instrument : MSVOA_D
 ClientSampleId :

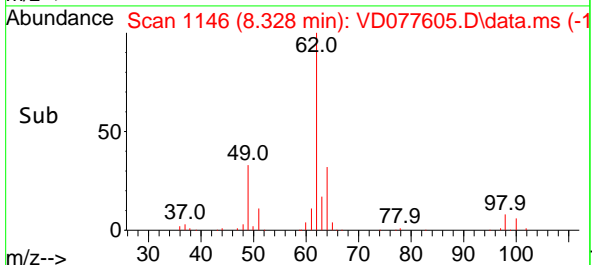
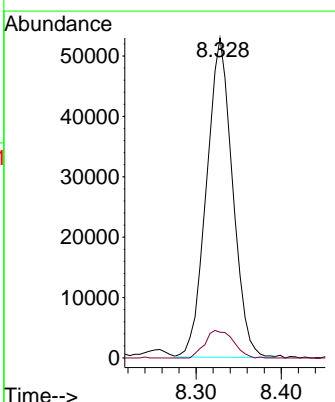
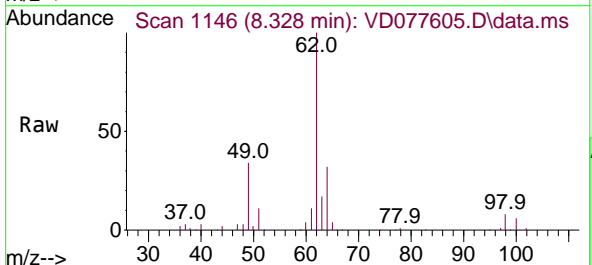


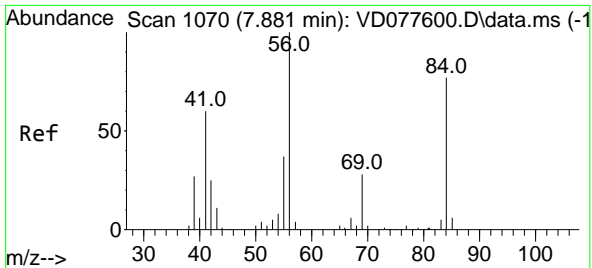
Tgt Ion: 83 Resp: 149390
 Ion Ratio Lower Upper
 83 100
 85 64.5 45.9 85.3



#27
 1,2-Dichloroethane
 Concen: 27.579 ug/L
 RT: 8.328 min Scan# 1146
 Delta R.T. -0.000 min
 Lab File: VD077605.D
 Acq: 17 Nov 2023 11:28

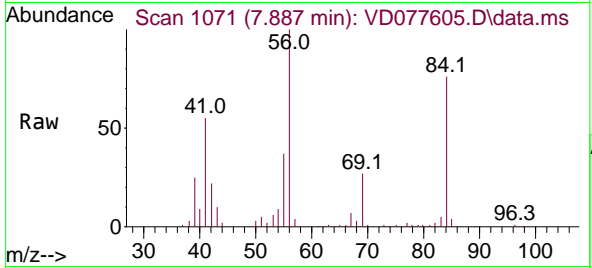
Tgt Ion: 62 Resp: 112232
 Ion Ratio Lower Upper
 62 100
 98 8.1 8.0 12.0





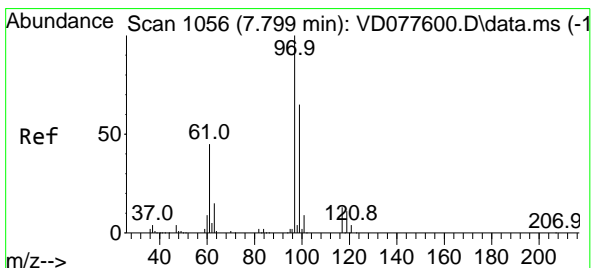
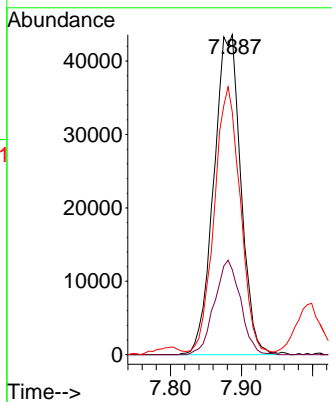
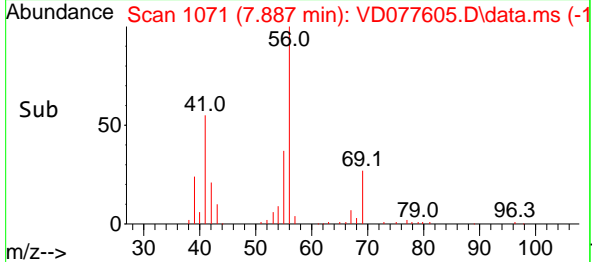
#29
 Cyclohexane
 Concen: 16.494 ug/L
 RT: 7.887 min Scan# 1071
 Delta R.T. 0.006 min
 Lab File: VD077605.D
 Acq: 17 Nov 2023 11:28

Instrument :
 MSVOA_D
 ClientSampleId :

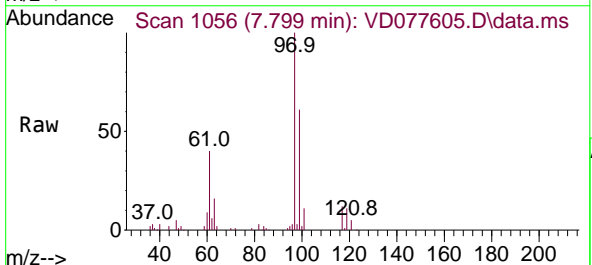


Tgt Ion: 56 Resp: 115333

Ion	Ratio	Lower	Upper
56	100		
69	28.3	22.6	33.8
84	80.9	63.3	94.9

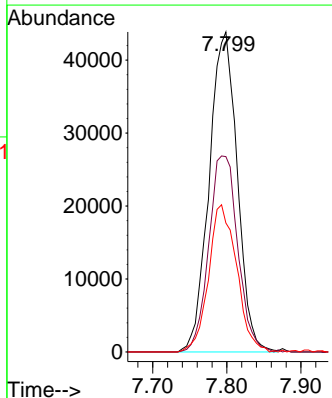
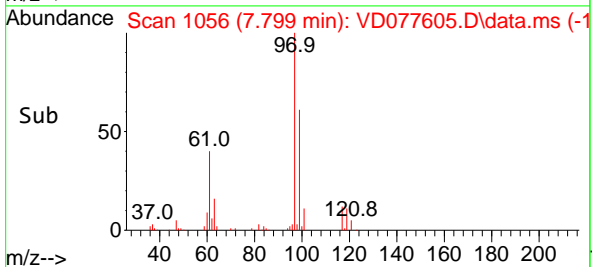


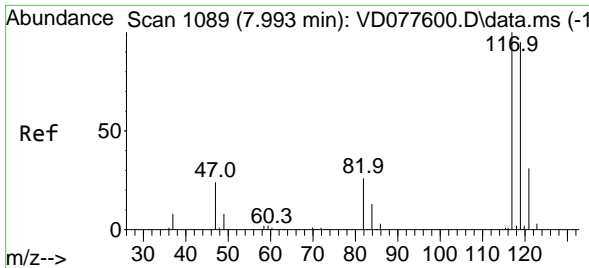
#30
 1,1,1-Trichloroethane
 Concen: 20.542 ug/L
 RT: 7.799 min Scan# 1056
 Delta R.T. -0.000 min
 Lab File: VD077605.D
 Acq: 17 Nov 2023 11:28



Tgt Ion: 97 Resp: 115816

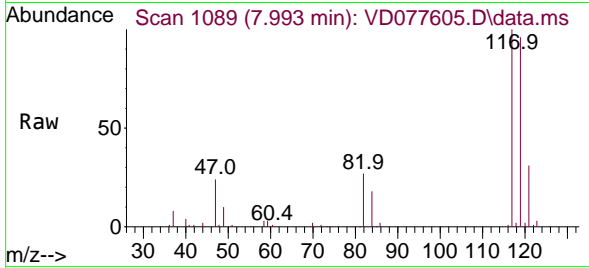
Ion	Ratio	Lower	Upper
97	100		
99	63.1	51.4	77.2
61	45.7	38.1	57.1



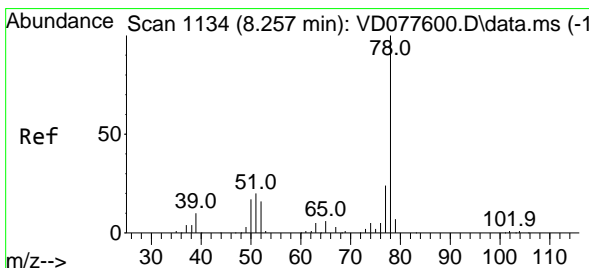
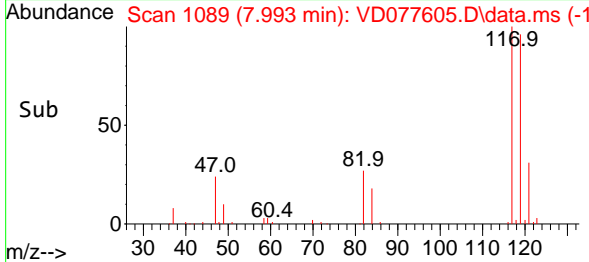
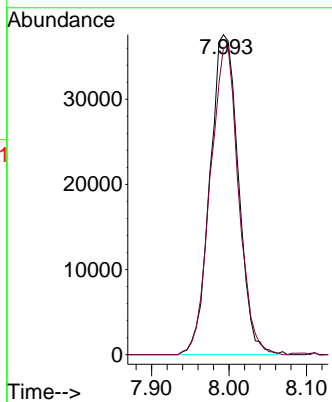


#31
 Carbon tetrachloride
 Concen: 19.788 ug/L
 RT: 7.993 min Scan# 1089
 Delta R.T. -0.000 min
 Lab File: VD077605.D
 Acq: 17 Nov 2023 11:28

Instrument : MSVOA_D
 ClientSampleId :

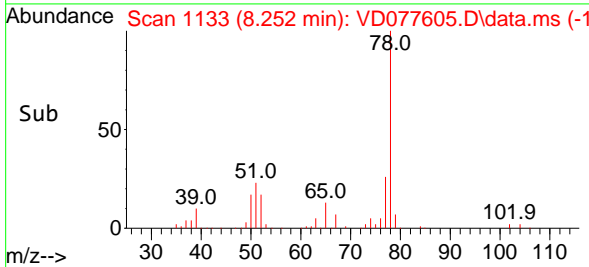
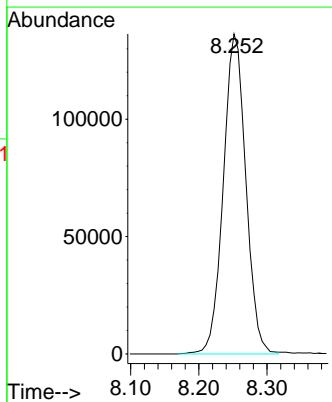
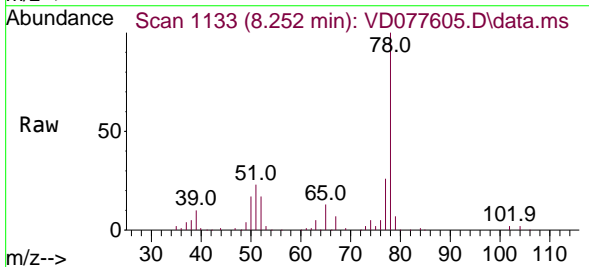


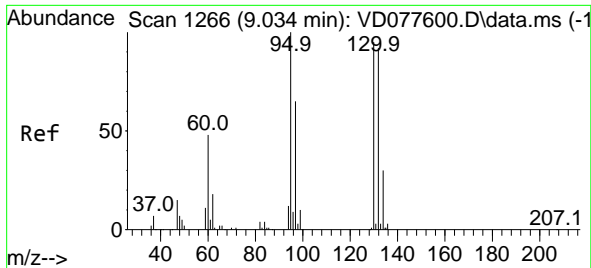
Tgt Ion:117 Resp: 95877
 Ion Ratio Lower Upper
 117 100
 119 95.8 75.4 113.0



#33
 Benzene
 Concen: 20.988 ug/L
 RT: 8.252 min Scan# 1133
 Delta R.T. -0.006 min
 Lab File: VD077605.D
 Acq: 17 Nov 2023 11:28

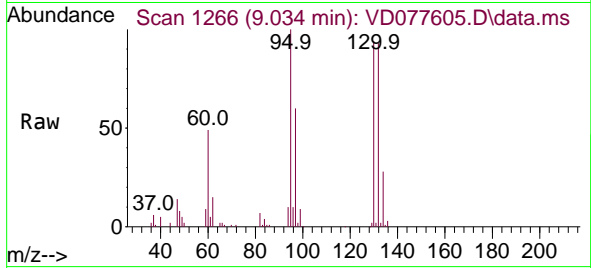
Tgt Ion: 78 Resp: 313454





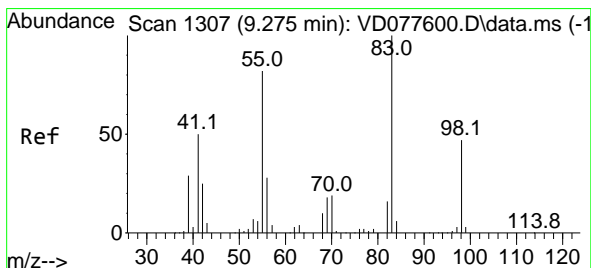
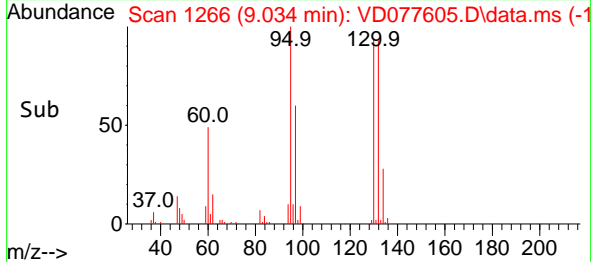
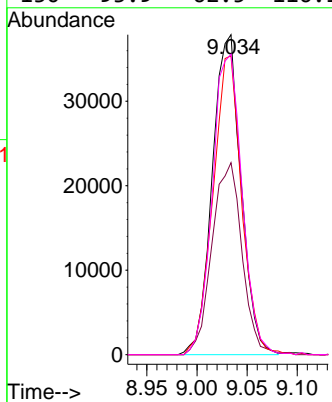
#34
 Trichloroethene
 Concen: 20.394 ug/L
 RT: 9.034 min Scan# 11
 Delta R.T. -0.000 min
 Lab File: VD077605.D
 Acq: 17 Nov 2023 11:28

Instrument :
 MSVOA_D
 ClientSampleId :



Tgt Ion: 95 Resp: 75473

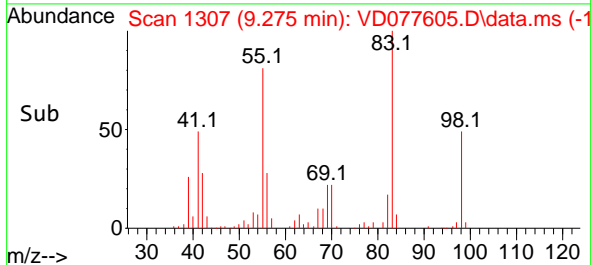
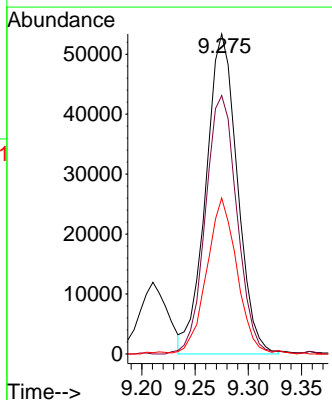
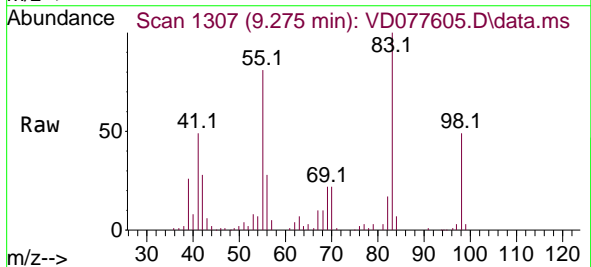
Ion	Ratio	Lower	Upper
95	100		
97	60.0	42.4	78.6
132	93.4	59.4	110.2
130	93.9	62.5	116.1

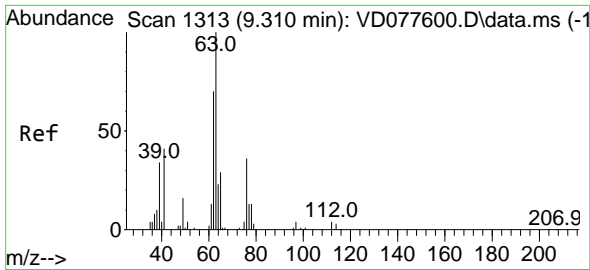


#35
 Methylcyclohexane
 Concen: 16.403 ug/L
 RT: 9.275 min Scan# 1307
 Delta R.T. -0.000 min
 Lab File: VD077605.D
 Acq: 17 Nov 2023 11:28

Tgt Ion: 83 Resp: 109543

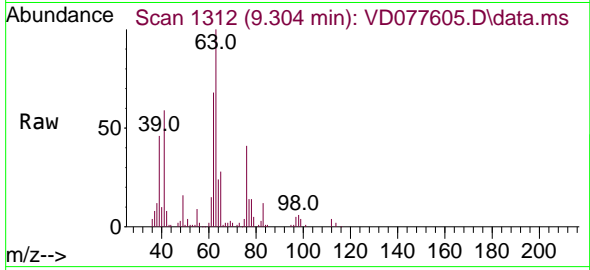
Ion	Ratio	Lower	Upper
83	100		
55	81.1	66.5	99.7
98	46.6	37.4	56.2



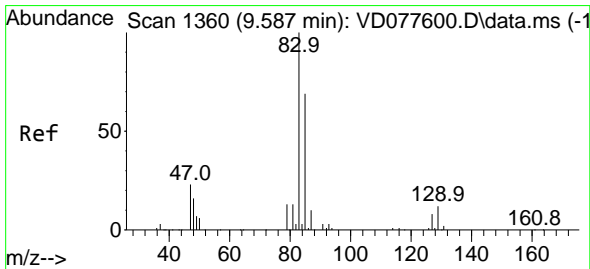
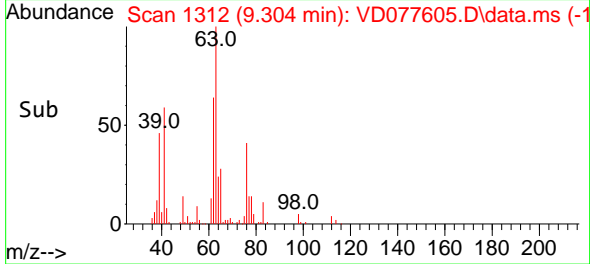
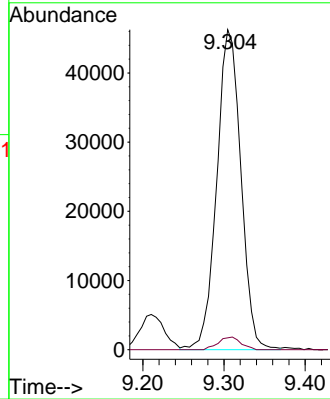


#37
 1,2-Dichloropropane
 Concen: 23.030 ug/L
 RT: 9.304 min Scan# 111
 Delta R.T. -0.006 min
 Lab File: VD077605.D
 Acq: 17 Nov 2023 11:28

Instrument :
 MSVOA_D
 ClientSampleId :

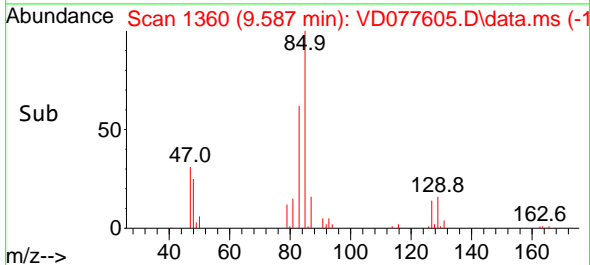
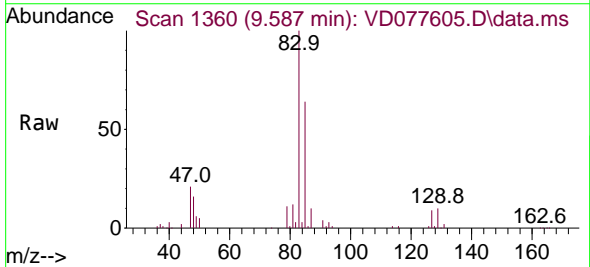
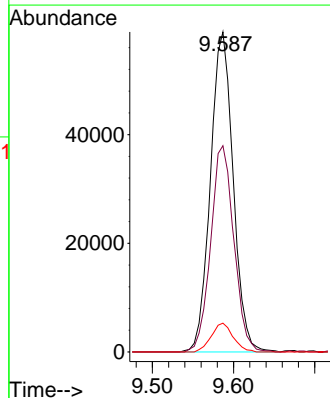


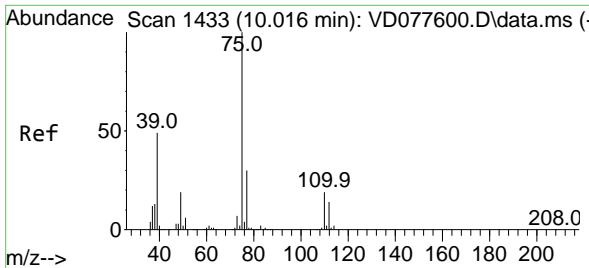
Tgt Ion: 63 Resp: 95615
 Ion Ratio Lower Upper
 63 100
 112 3.7 3.2 4.8



#38
 Bromodichloromethane
 Concen: 24.077 ug/L
 RT: 9.587 min Scan# 1360
 Delta R.T. -0.000 min
 Lab File: VD077605.D
 Acq: 17 Nov 2023 11:28

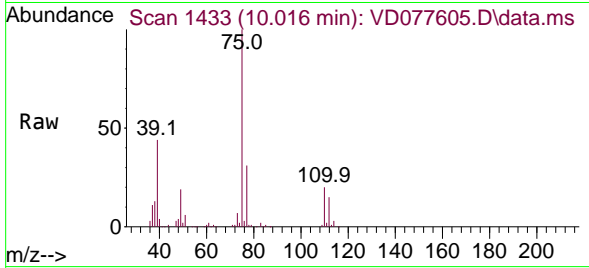
Tgt Ion: 83 Resp: 114664
 Ion Ratio Lower Upper
 83 100
 85 64.5 42.4 78.8
 127 10.0 6.4 9.6#



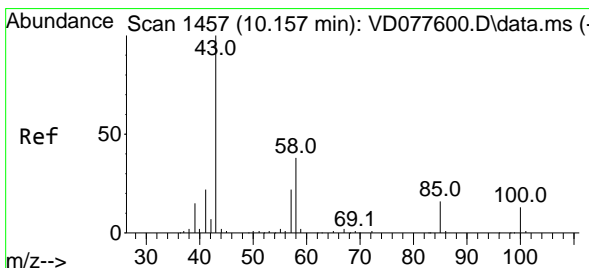
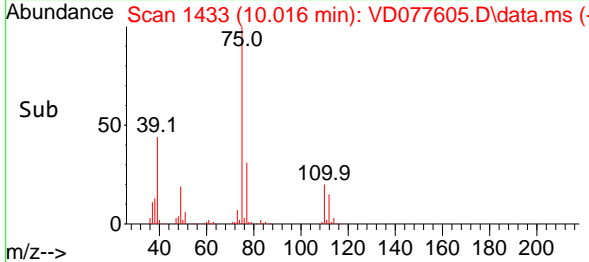
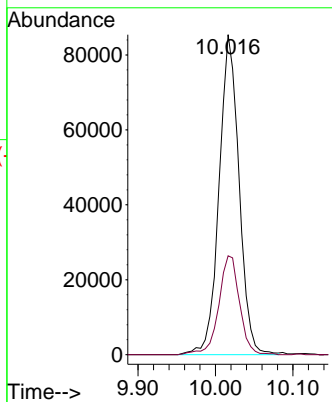


#39
 cis-1,3-Dichloropropene
 Concen: 24.006 ug/L
 RT: 10.016 min Scan# 1433
 Delta R.T. -0.000 min
 Lab File: VD077605.D
 Acq: 17 Nov 2023 11:28

Instrument : MSVOA_D
 ClientSampleId :

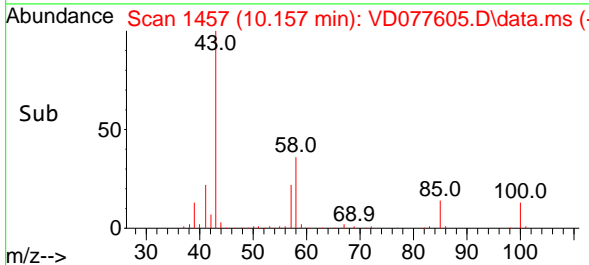
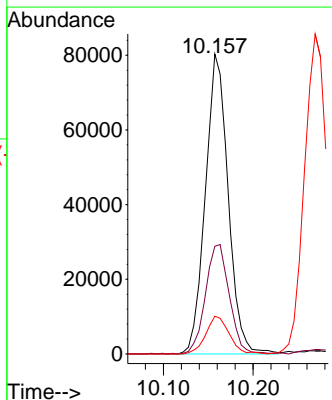
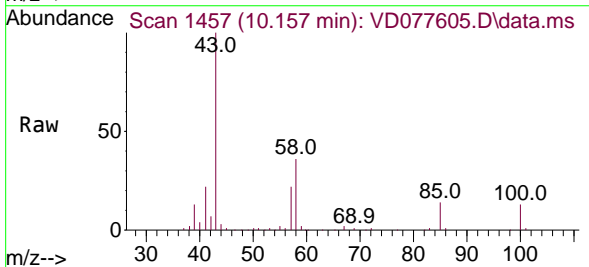


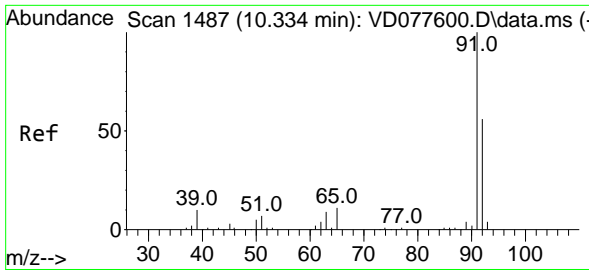
Tgt Ion: 75 Resp: 153158
 Ion Ratio Lower Upper
 75 100
 77 30.9 22.5 41.9



#40
 4-Methyl-2-pentanone
 Concen: 56.138 ug/L
 RT: 10.157 min Scan# 1457
 Delta R.T. -0.000 min
 Lab File: VD077605.D
 Acq: 17 Nov 2023 11:28

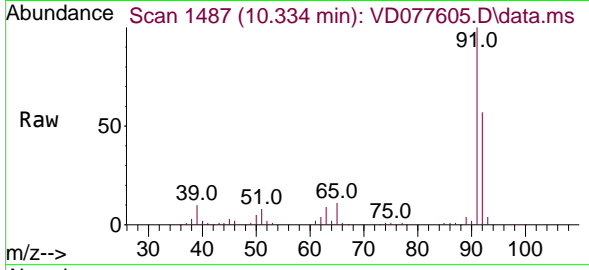
Tgt Ion: 43 Resp: 142036
 Ion Ratio Lower Upper
 43 100
 58 38.1 29.8 44.8
 100 12.6 9.5 14.3



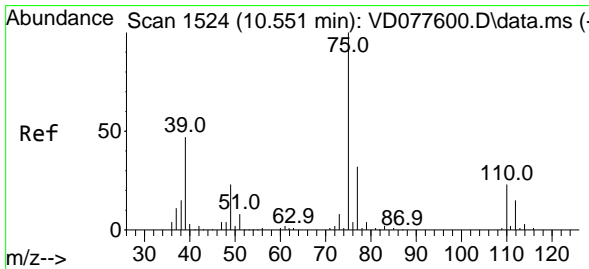
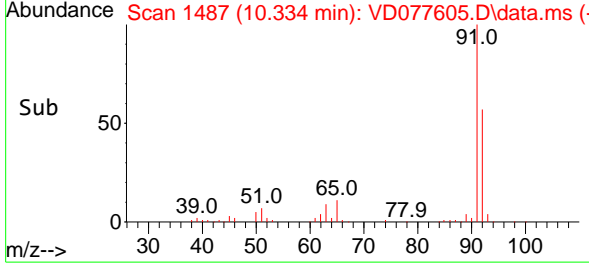
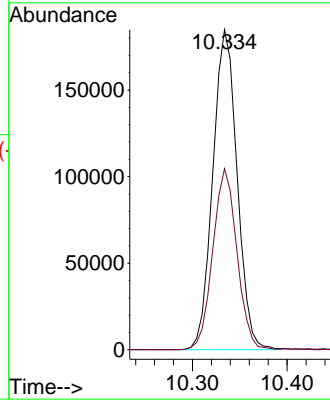


#42
 Toluene
 Concen: 21.000 ug/L
 RT: 10.334 min Scan# 1487
 Delta R.T. -0.000 min
 Lab File: VD077605.D
 Acq: 17 Nov 2023 11:28

Instrument : MSVOA_D
 ClientSampleId :

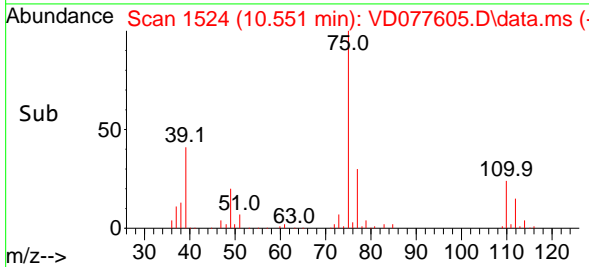
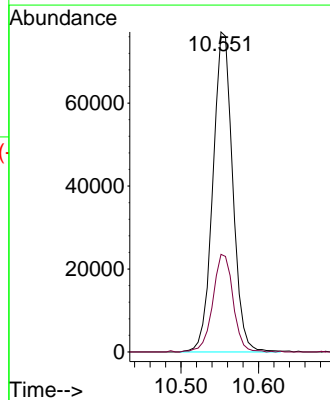
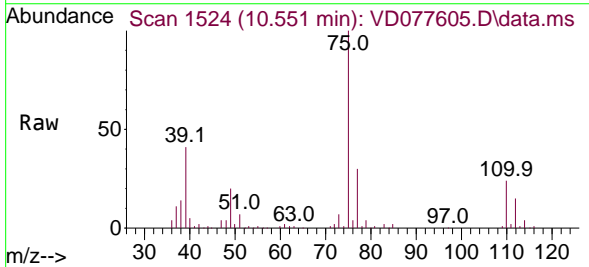


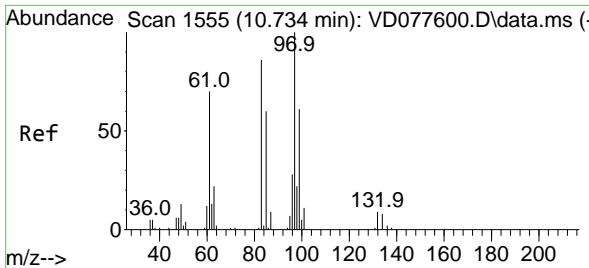
Tgt Ion: 91 Resp: 329282
 Ion Ratio Lower Upper
 91 100
 92 56.5 39.3 73.1



#44
 trans-1,3-Dichloropropene
 Concen: 25.930 ug/L
 RT: 10.551 min Scan# 1524
 Delta R.T. -0.000 min
 Lab File: VD077605.D
 Acq: 17 Nov 2023 11:28

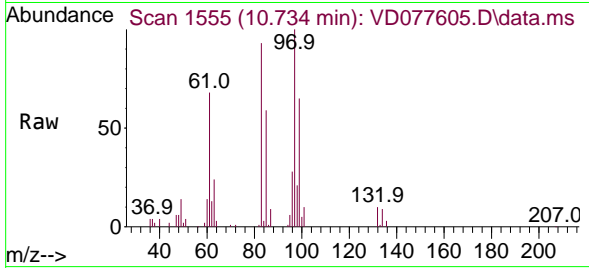
Tgt Ion: 75 Resp: 136697
 Ion Ratio Lower Upper
 75 100
 77 30.5 22.3 41.5





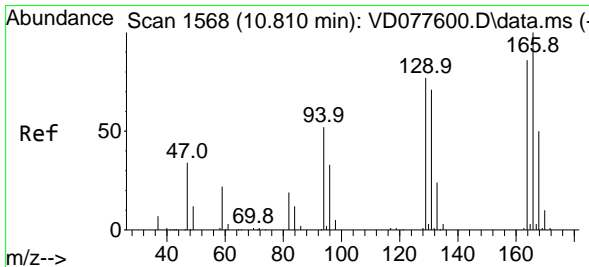
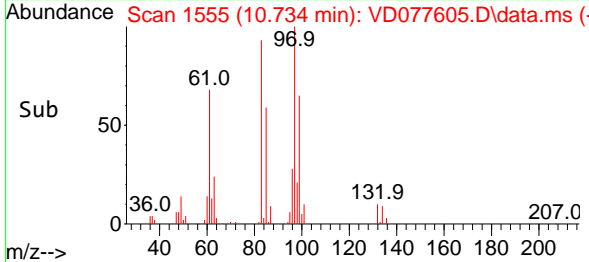
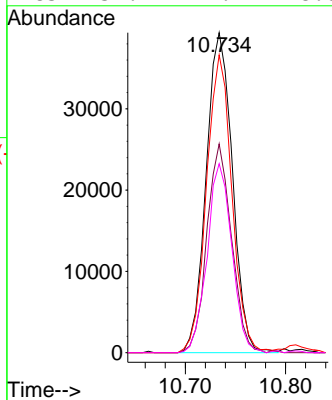
#45
 1,1,2-Trichloroethane
 Concen: 28.225 ug/L
 RT: 10.734 min Scan# 1555
 Delta R.T. -0.000 min
 Lab File: VD077605.D
 Acq: 17 Nov 2023 11:28

Instrument : MSVOA_D
 ClientSampleId :



Tgt Ion: 97 Resp: 71632

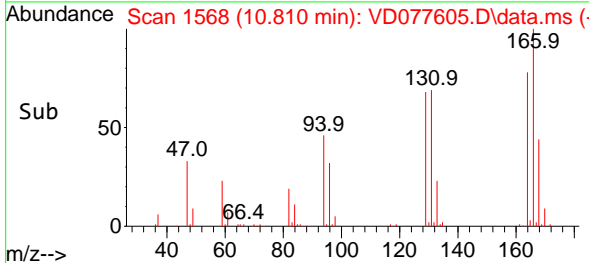
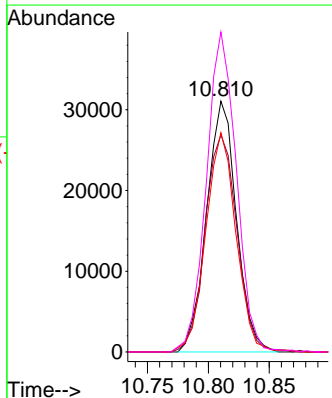
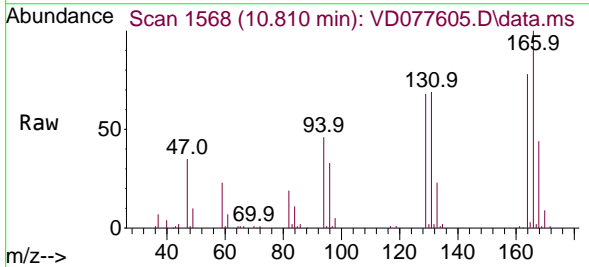
Ion	Ratio	Lower	Upper
97	100		
99	65.3	43.5	80.7
83	93.0	63.1	117.3
85	59.1	42.4	78.8

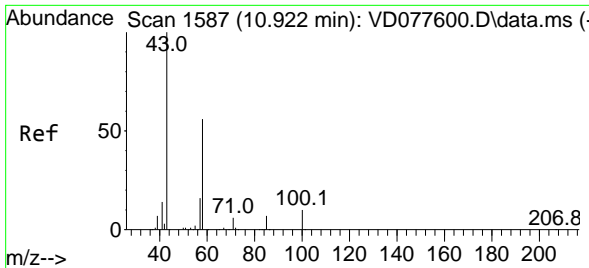


#46
 Tetrachloroethene
 Concen: 19.509 ug/L
 RT: 10.810 min Scan# 1568
 Delta R.T. -0.000 min
 Lab File: VD077605.D
 Acq: 17 Nov 2023 11:28

Tgt Ion: 164 Resp: 53120

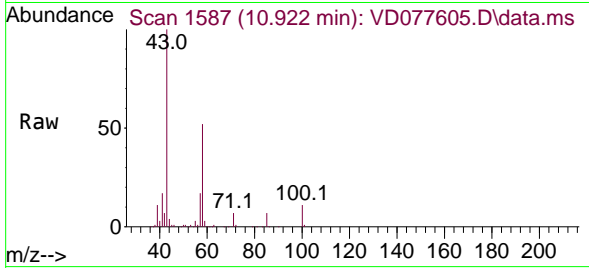
Ion	Ratio	Lower	Upper
164	100		
129	86.6	60.6	112.6
131	87.4	61.6	114.4
166	127.6	85.4	158.6





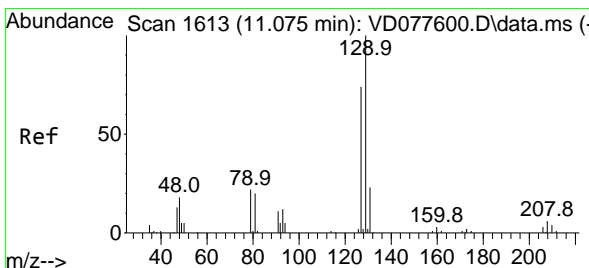
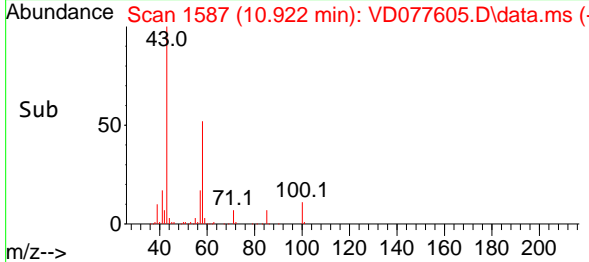
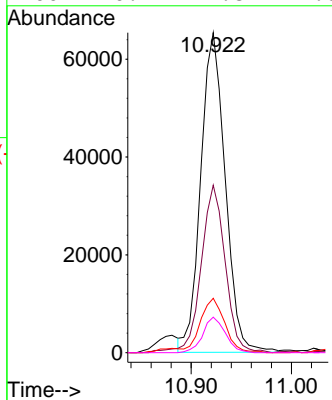
#48
 2-Hexanone
 Concen: 55.364 ug/L
 RT: 10.922 min Scan# 111031
 Delta R.T. -0.000 min
 Lab File: VD077605.D
 Acq: 17 Nov 2023 11:28

Instrument : MSVOA_D
 ClientSampleId :



Tgt Ion: 43 Resp: 111031

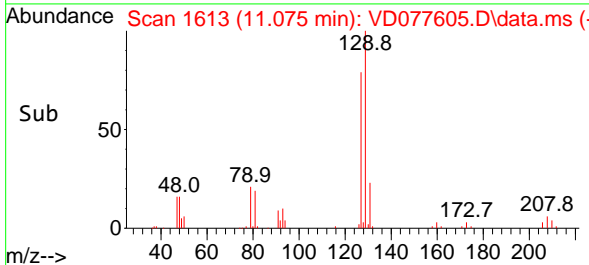
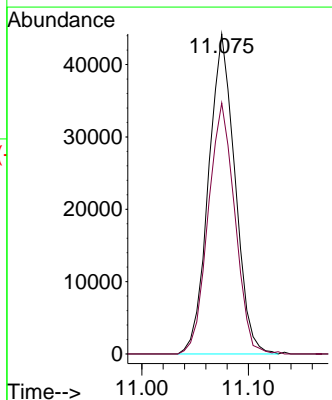
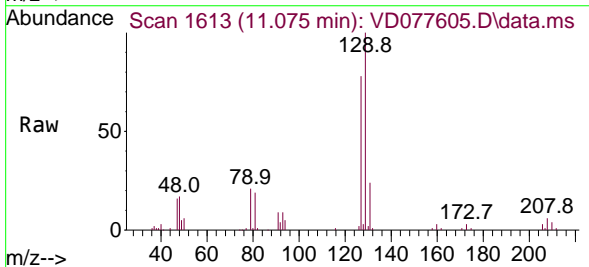
Ion	Ratio	Lower	Upper
43	100		
58	51.5	40.8	61.2
57	16.0	13.7	20.5
100	10.2	7.8	11.8

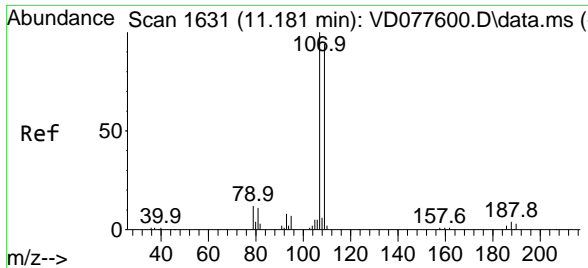


#49
 Dibromochloromethane
 Concen: 26.451 ug/L
 RT: 11.075 min Scan# 1613
 Delta R.T. -0.000 min
 Lab File: VD077605.D
 Acq: 17 Nov 2023 11:28

Tgt Ion: 129 Resp: 76254

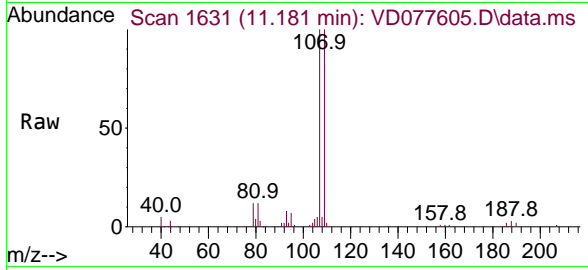
Ion	Ratio	Lower	Upper
129	100		
127	78.4	54.9	102.1





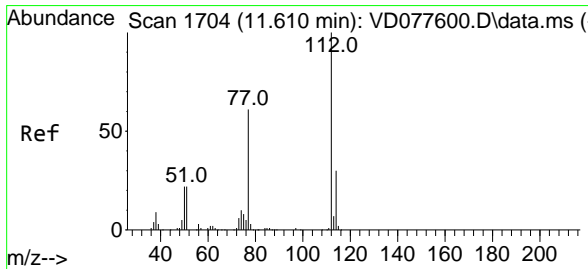
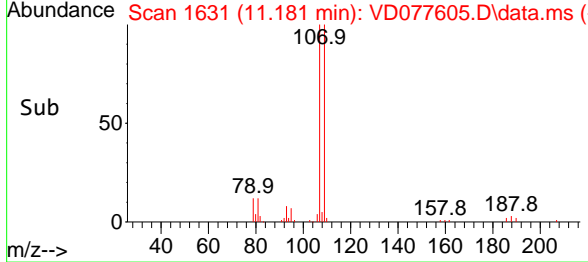
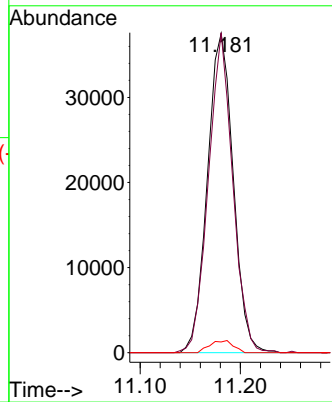
#50
 1,2-Dibromoethane
 Concen: 27.669 ug/L
 RT: 11.181 min Scan# 1
 Delta R.T. -0.000 min
 Lab File: VD077605.D
 Acq: 17 Nov 2023 11:28

Instrument :
 MSVOA_D
 ClientSampleId :



Tgt Ion:107 Resp: 67152

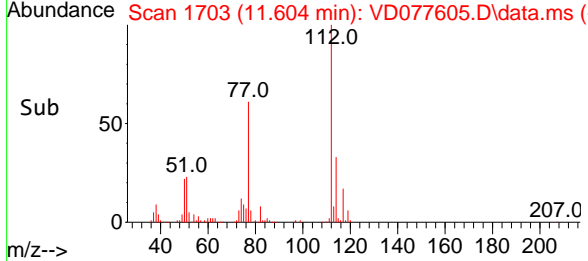
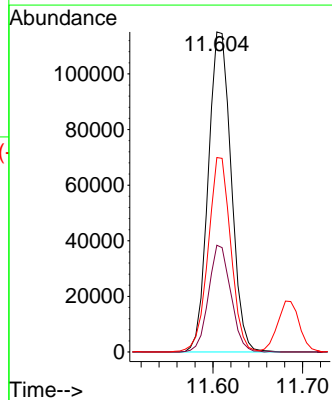
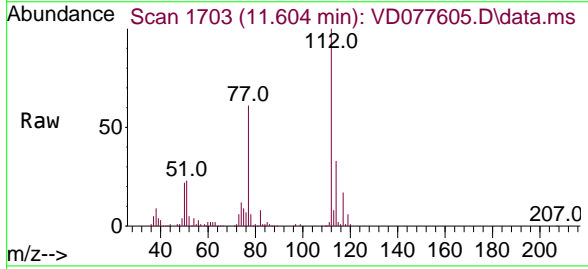
Ion	Ratio	Lower	Upper
107	100		
109	100.3	64.8	120.3
188	3.3	3.2	4.8

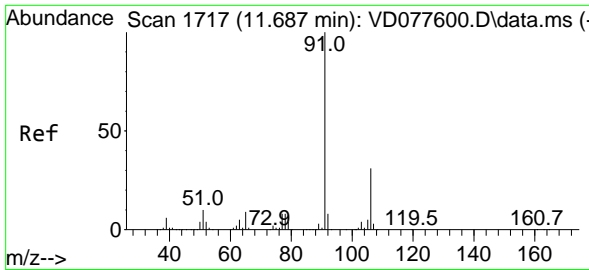


#51
 Chlorobenzene
 Concen: 22.212 ug/L
 RT: 11.604 min Scan# 1703
 Delta R.T. -0.006 min
 Lab File: VD077605.D
 Acq: 17 Nov 2023 11:28

Tgt Ion:112 Resp: 204046

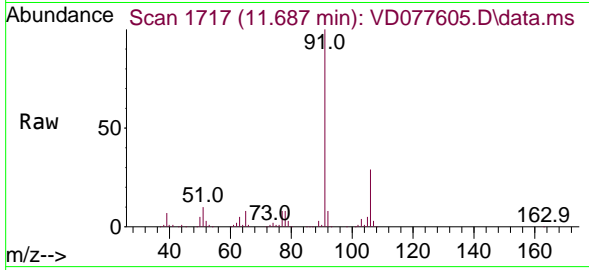
Ion	Ratio	Lower	Upper
112	100		
114	33.4	22.4	41.6
77	60.7	49.6	74.4



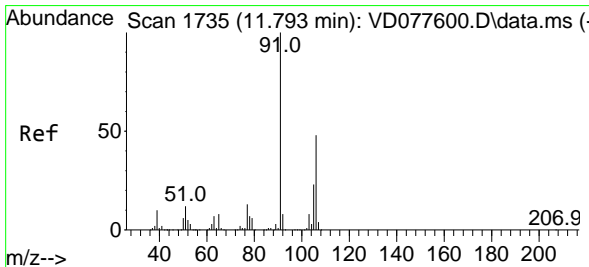
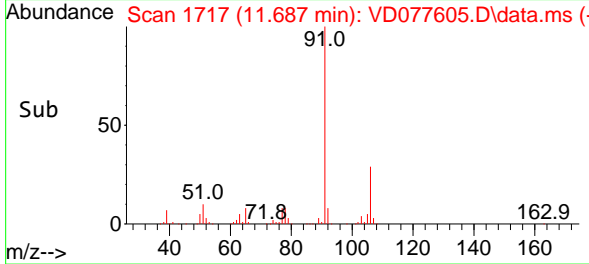
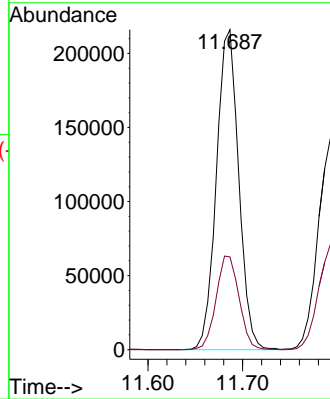


#52
 Ethylbenzene
 Concen: 20.499 ug/L
 RT: 11.687 min Scan# 1717
 Delta R.T. -0.000 min
 Lab File: VD077605.D
 Acq: 17 Nov 2023 11:28

Instrument : MSVOA_D
 ClientSampleId :

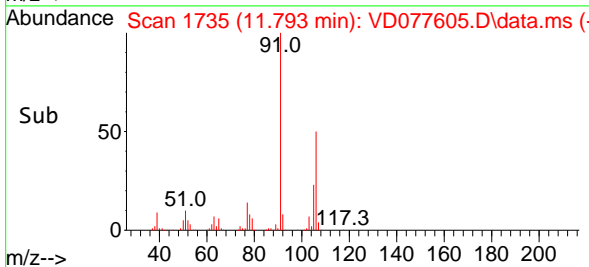
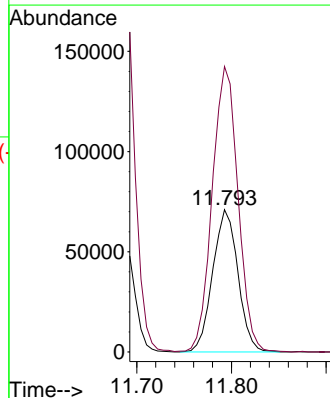
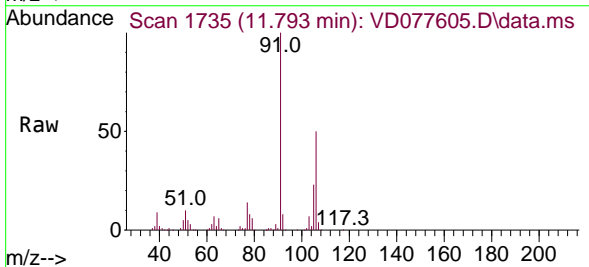


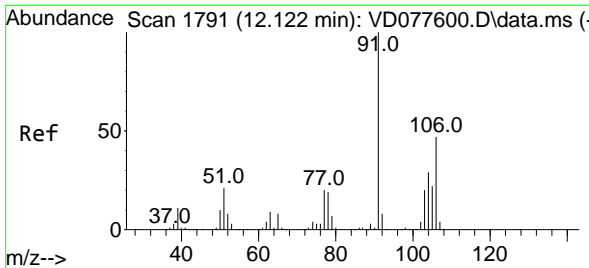
Tgt Ion: 91 Resp: 353675
 Ion Ratio Lower Upper
 91 100
 106 29.0 22.0 40.8



#53
 m,p-Xylene
 Concen: 20.924 ug/L
 RT: 11.793 min Scan# 1735
 Delta R.T. -0.000 min
 Lab File: VD077605.D
 Acq: 17 Nov 2023 11:28

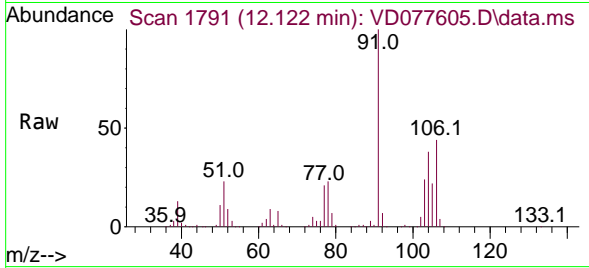
Tgt Ion: 106 Resp: 131365
 Ion Ratio Lower Upper
 106 100
 91 200.7 146.7 272.4



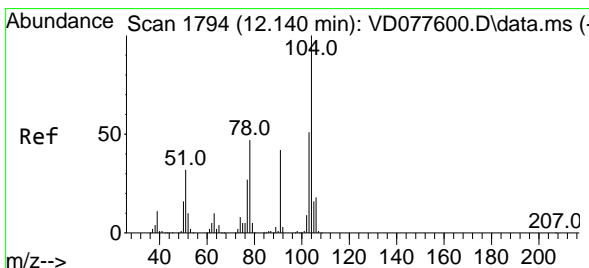
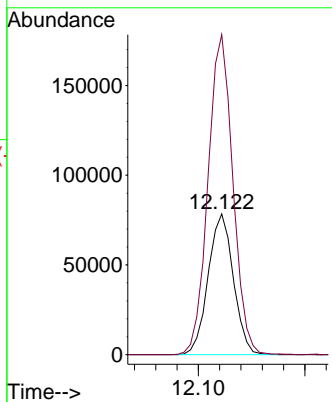
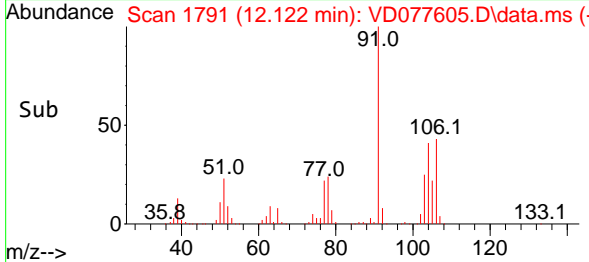


#54
 o-Xylene
 Concen: 21.435 ug/L
 RT: 12.122 min Scan# 1791
 Delta R.T. 0.000 min
 Lab File: VD077605.D
 Acq: 17 Nov 2023 11:28

Instrument : MSVOA_D
 ClientSampleId :

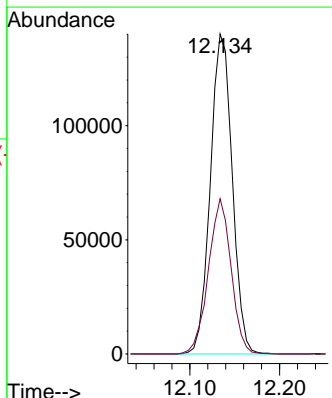
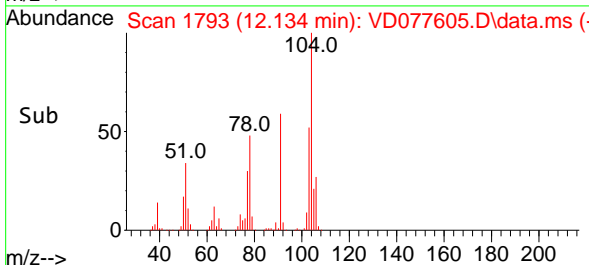
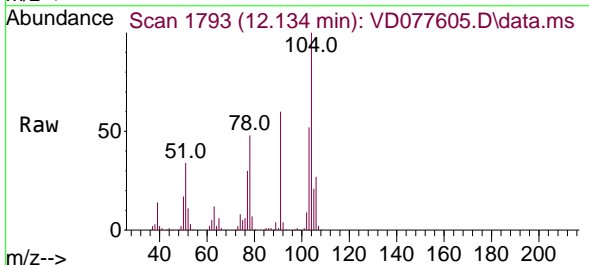


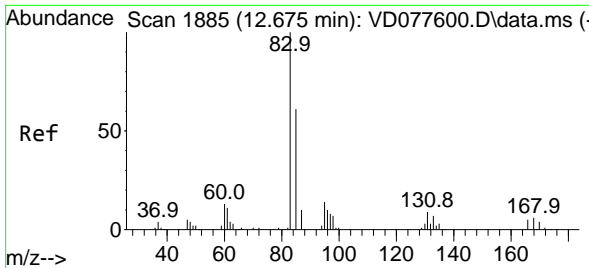
Tgt Ion:106 Resp: 128892
 Ion Ratio Lower Upper
 106 100
 91 227.3 158.5 294.4



#55
 Styrene
 Concen: 22.619 ug/L
 RT: 12.134 min Scan# 1793
 Delta R.T. -0.006 min
 Lab File: VD077605.D
 Acq: 17 Nov 2023 11:28

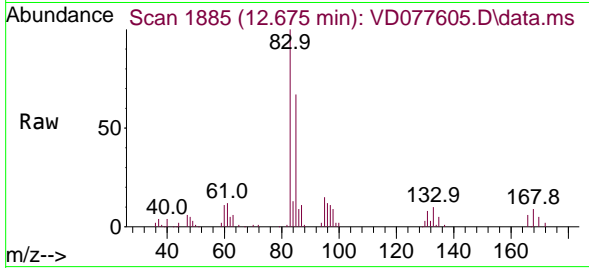
Tgt Ion:104 Resp: 237480
 Ion Ratio Lower Upper
 104 100
 78 48.5 34.9 64.9



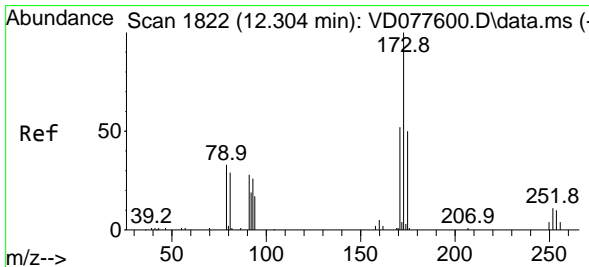
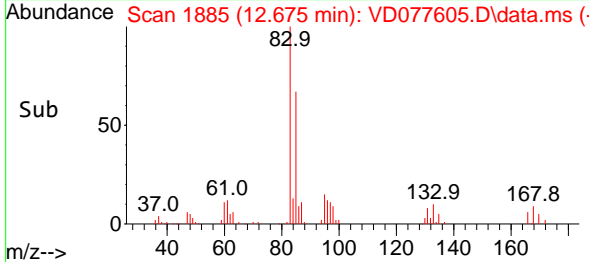
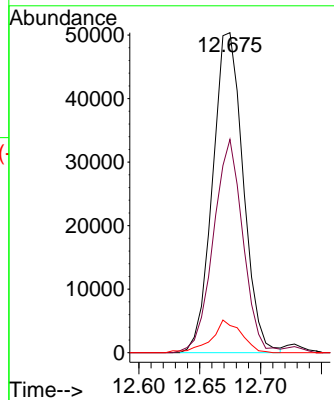


#57
 1,1,2,2-Tetrachloroethane
 Concen: 29.438 ug/L
 RT: 12.675 min Scan# 1885
 Delta R.T. -0.000 min
 Lab File: VD077605.D
 Acq: 17 Nov 2023 11:28

Instrument : MSVOA_D
 ClientSampleId :

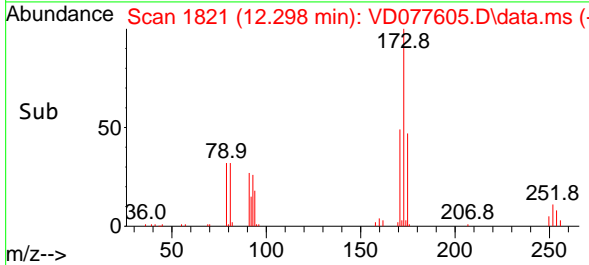
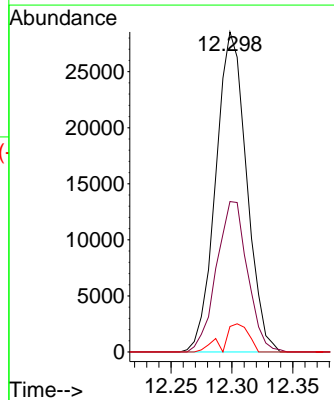
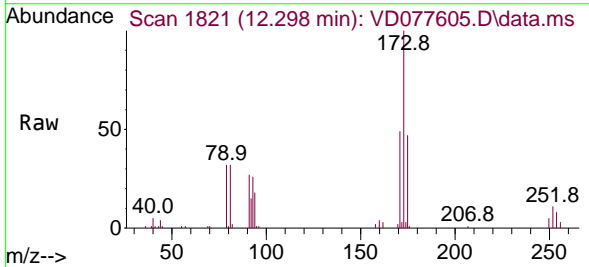


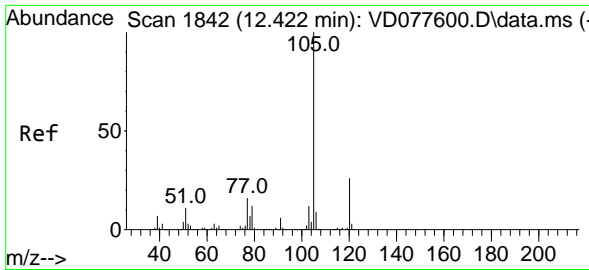
Tgt Ion: 83 Resp: 88011
 Ion Ratio Lower Upper
 83 100
 85 66.7 44.9 83.3
 131 8.5 7.2 10.8



#59
 Bromoform
 Concen: 28.425 ug/L
 RT: 12.298 min Scan# 1821
 Delta R.T. -0.006 min
 Lab File: VD077605.D
 Acq: 17 Nov 2023 11:28

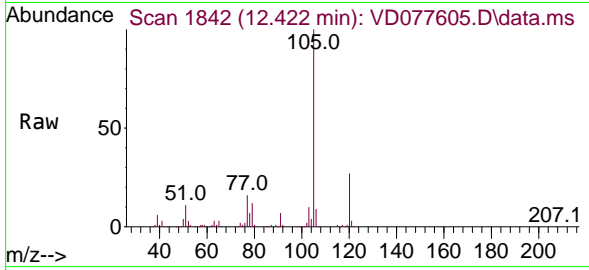
Tgt Ion: 173 Resp: 50191
 Ion Ratio Lower Upper
 173 100
 175 47.4 38.2 57.2
 254 5.7 7.1 10.7#





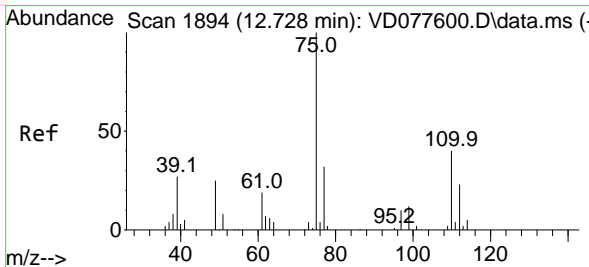
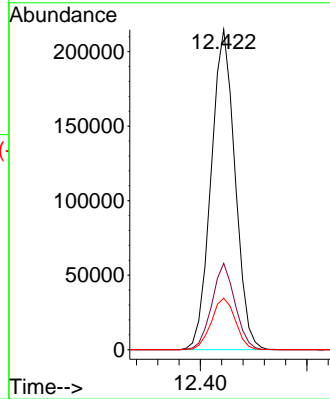
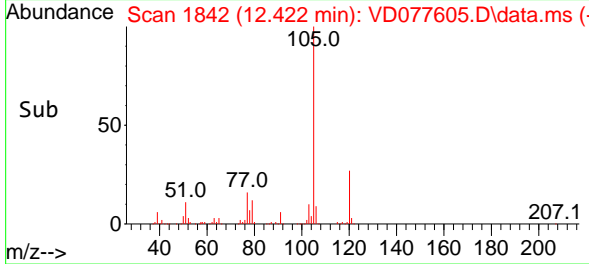
#60
 Isopropylbenzene
 Concen: 19.980 ug/L
 RT: 12.422 min Scan# 1842
 Delta R.T. 0.000 min
 Lab File: VD077605.D
 Acq: 17 Nov 2023 11:28

Instrument : MSVOA_D
 ClientSampleId :

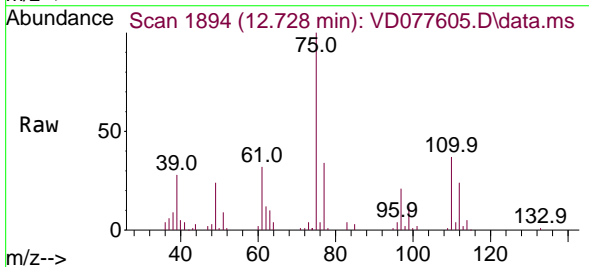


Tgt Ion:105 Resp: 334709

Ion	Ratio	Lower	Upper
105	100		
120	26.1	21.0	31.4
77	16.2	13.4	20.2

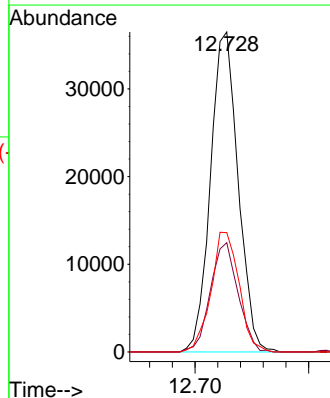
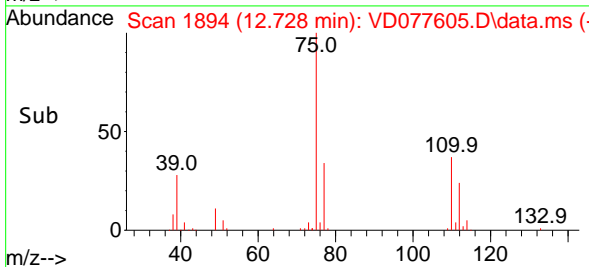


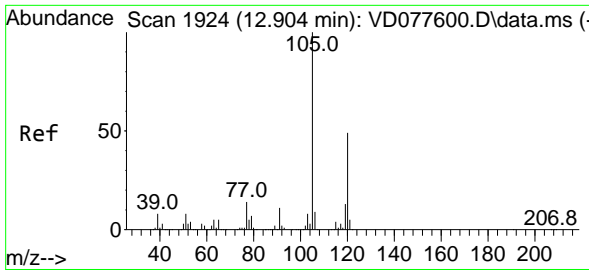
#61
 1,2,3-Trichloropropane
 Concen: 27.985 ug/L
 RT: 12.728 min Scan# 1894
 Delta R.T. 0.000 min
 Lab File: VD077605.D
 Acq: 17 Nov 2023 11:28



Tgt Ion: 75 Resp: 61736

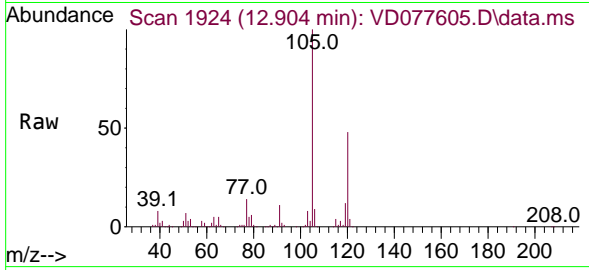
Ion	Ratio	Lower	Upper
75	100		
77	34.3	25.6	38.4
110	38.0	29.6	44.4



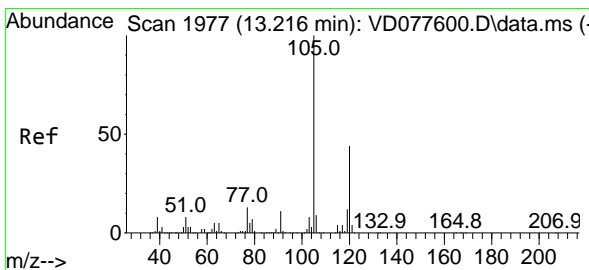
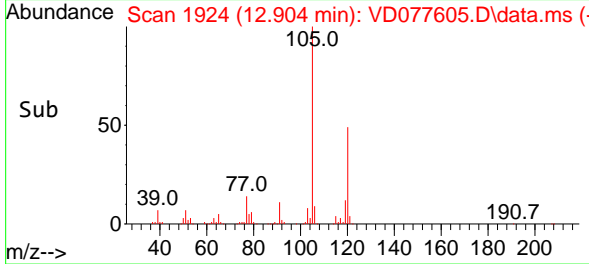
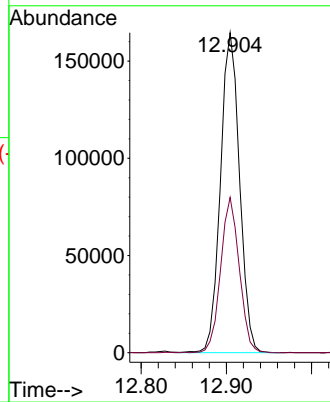


#62
 1,3,5-Trimethylbenzene
 Concen: 20.120 ug/L
 RT: 12.904 min Scan# 1924
 Delta R.T. -0.000 min
 Lab File: VD077605.D
 Acq: 17 Nov 2023 11:28

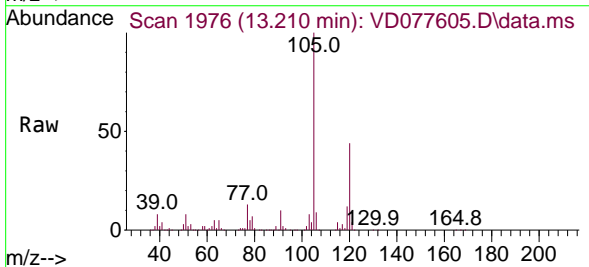
Instrument :
 MSVOA_D
 ClientSampleId :



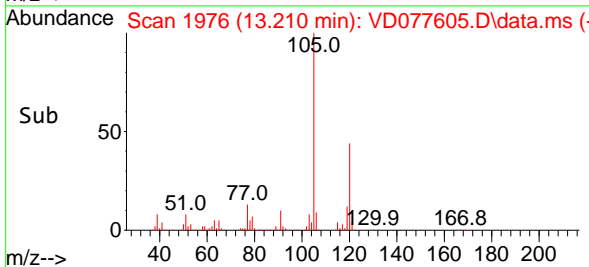
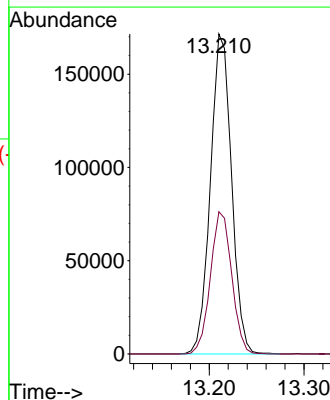
Tgt Ion:105 Resp: 255798
 Ion Ratio Lower Upper
 105 100
 120 47.3 37.8 56.6

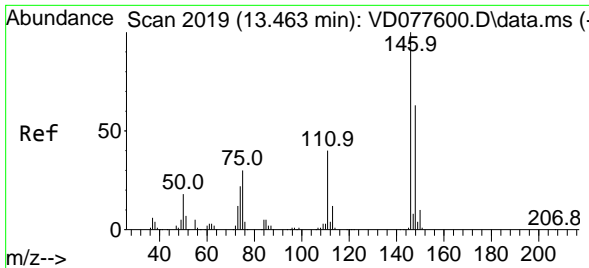


#63
 1,2,4-Trimethylbenzene
 Concen: 20.613 ug/L
 RT: 13.210 min Scan# 1976
 Delta R.T. -0.006 min
 Lab File: VD077605.D
 Acq: 17 Nov 2023 11:28



Tgt Ion:105 Resp: 265474
 Ion Ratio Lower Upper
 105 100
 120 44.8 35.6 53.4



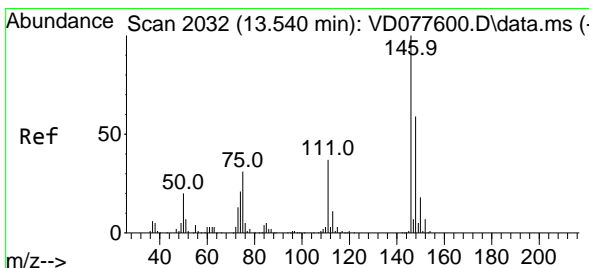
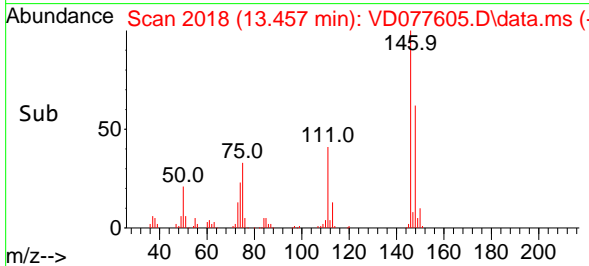
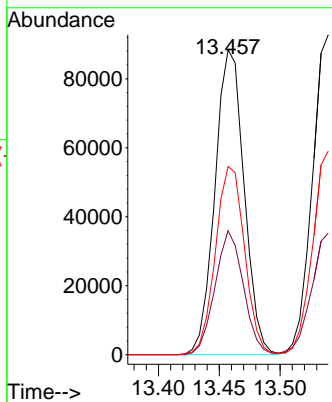
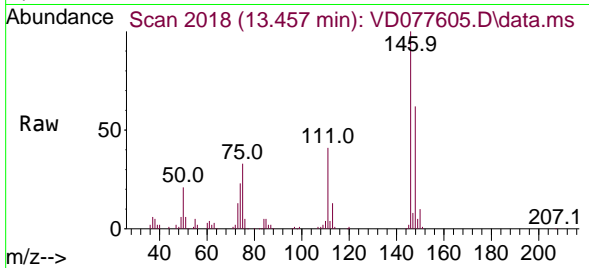


#64
 1,3-Dichlorobenzene
 Concen: 21.426 ug/L
 RT: 13.457 min Scan# 2019
 Delta R.T. -0.006 min
 Lab File: VD077605.D
 Acq: 17 Nov 2023 11:28

Instrument : MSVOA_D
 ClientSampleId :

Tgt Ion:146 Resp: 147249

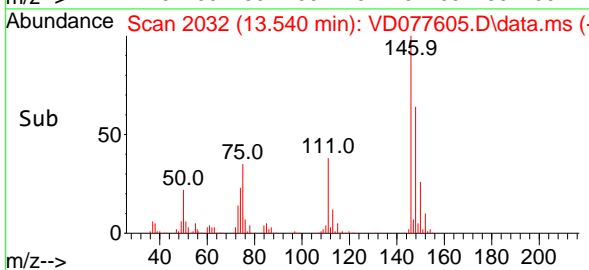
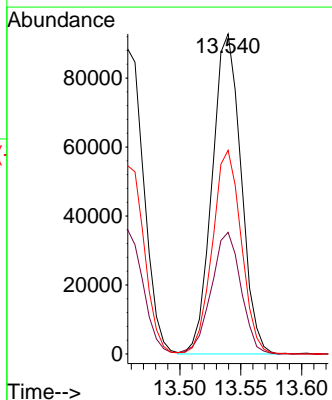
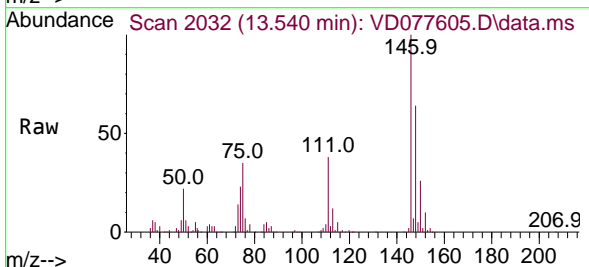
Ion	Ratio	Lower	Upper
146	100		
111	40.7	27.2	50.6
148	61.7	44.1	81.9

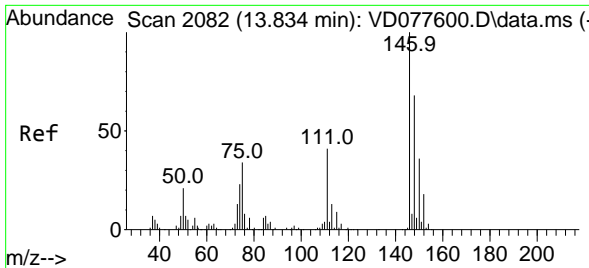


#65
 1,4-Dichlorobenzene
 Concen: 22.104 ug/L
 RT: 13.540 min Scan# 2032
 Delta R.T. -0.000 min
 Lab File: VD077605.D
 Acq: 17 Nov 2023 11:28

Tgt Ion:146 Resp: 153307

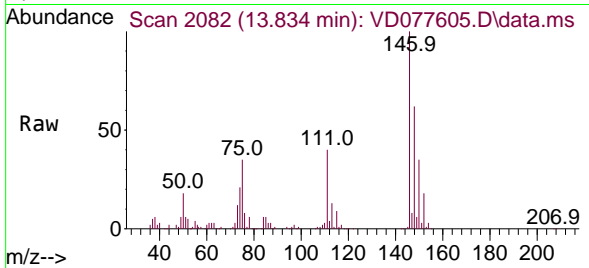
Ion	Ratio	Lower	Upper
146	100		
111	38.0	25.6	47.4
148	63.6	44.1	81.9



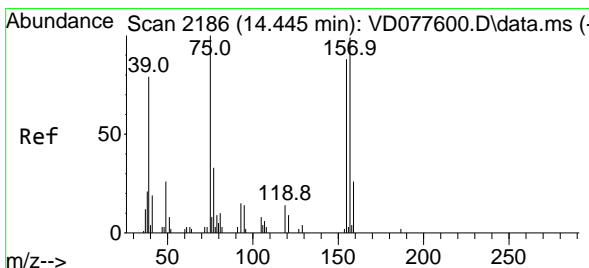
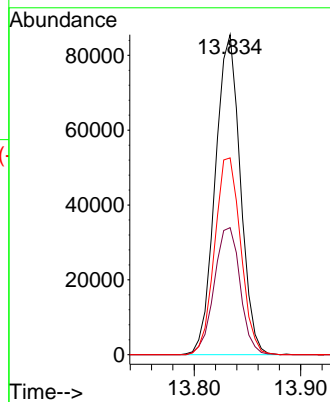
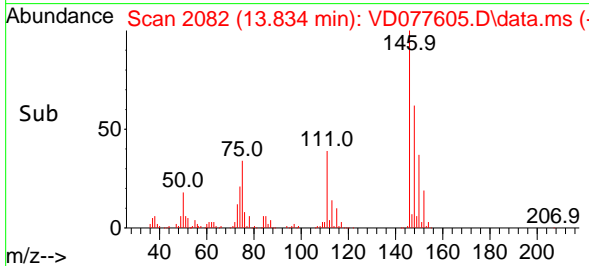


#67
 1,2-Dichlorobenzene
 Concen: 23.009 ug/L
 RT: 13.834 min Scan# 2082
 Delta R.T. -0.000 min
 Lab File: VD077605.D
 Acq: 17 Nov 2023 11:28

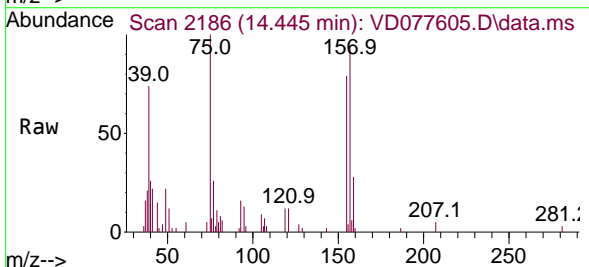
Instrument : MSVOA_D
 ClientSampleId :



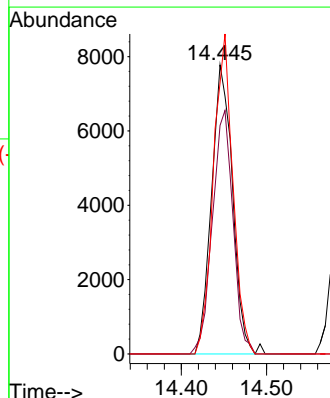
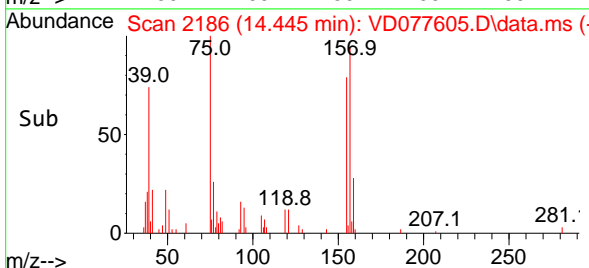
Tgt Ion:146 Resp: 139801
 Ion Ratio Lower Upper
 146 100
 111 39.7 33.8 50.6
 148 61.5 54.3 81.5

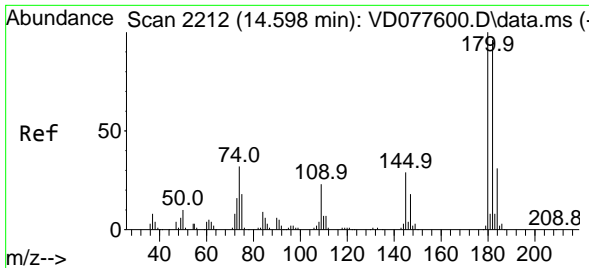


#68
 1,2-Dibromo-3-chloropropane
 Concen: 27.784 ug/L
 RT: 14.445 min Scan# 2186
 Delta R.T. -0.000 min
 Lab File: VD077605.D
 Acq: 17 Nov 2023 11:28



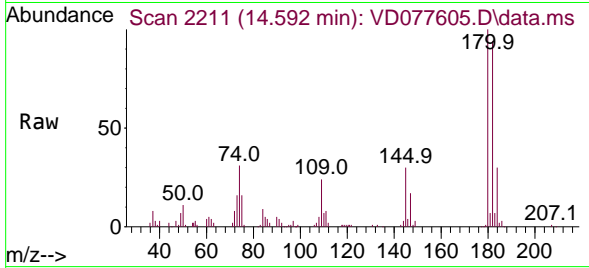
Tgt Ion: 75 Resp: 13332
 Ion Ratio Lower Upper
 75 100
 155 83.1 58.2 87.2
 157 93.7 68.7 103.1



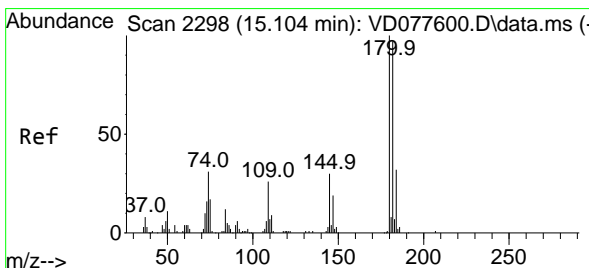
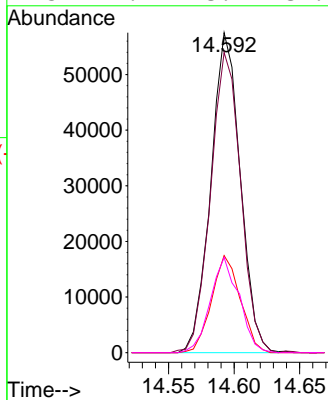
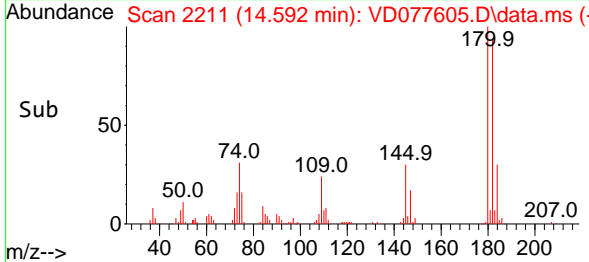


#69
 1,3,5-Trichlorobenzene
 Concen: 19.193 ug/L
 RT: 14.592 min Scan# 211
 Delta R.T. -0.006 min
 Lab File: VD077605.D
 Acq: 17 Nov 2023 11:28

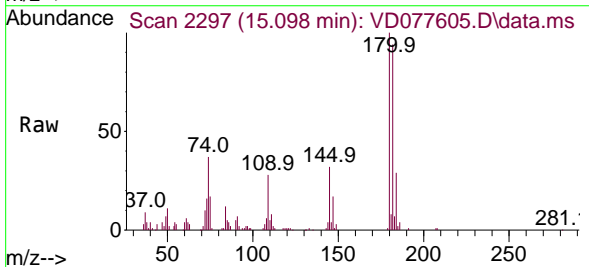
Instrument :
 MSVOA_D
 ClientSampleId :



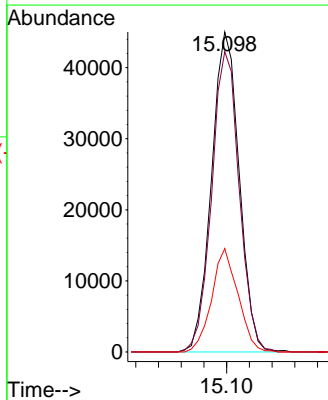
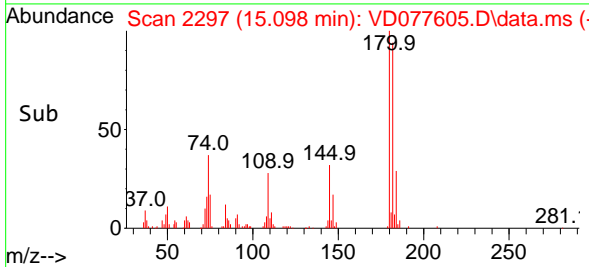
Tgt Ion:180 Resp: 89813
 Ion Ratio Lower Upper
 180 100
 182 95.6 76.1 114.1
 184 29.7 24.0 36.0
 145 29.1 23.1 34.7

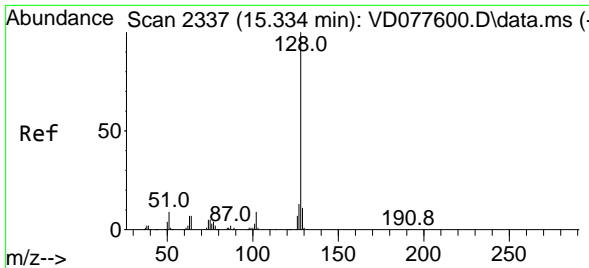


#70
 1,2,4-trichlorobenzene
 Concen: 19.303 ug/L
 RT: 15.098 min Scan# 2297
 Delta R.T. -0.006 min
 Lab File: VD077605.D
 Acq: 17 Nov 2023 11:28



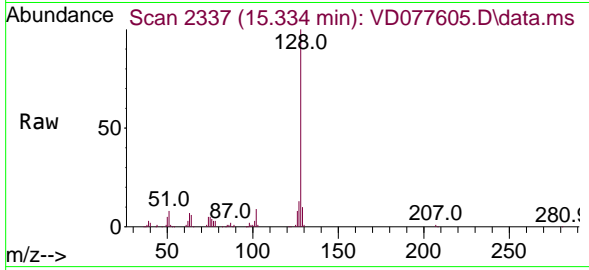
Tgt Ion:180 Resp: 76129
 Ion Ratio Lower Upper
 180 100
 182 93.4 75.8 113.6
 145 30.8 24.1 36.1



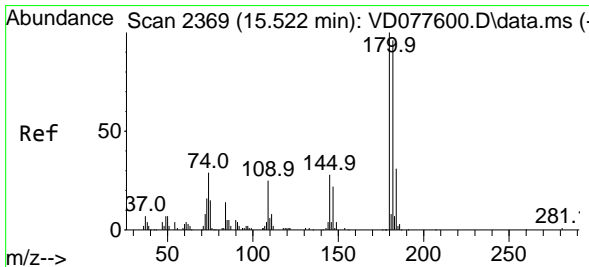
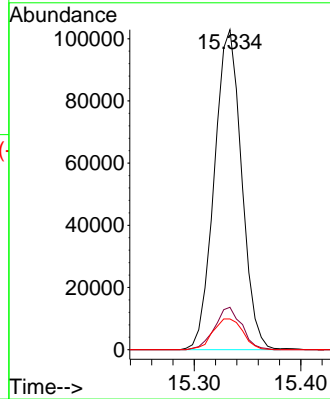
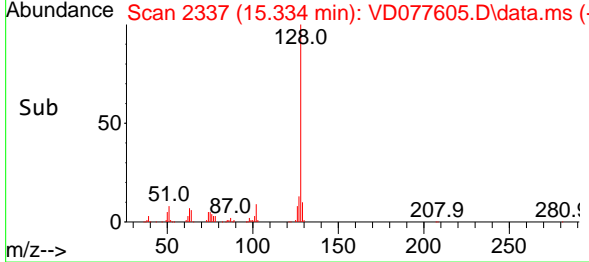


#71
 Naphthalene
 Concen: 24.637 ug/L
 RT: 15.334 min Scan# 21
 Delta R.T. -0.000 min
 Lab File: VD077605.D
 Acq: 17 Nov 2023 11:28

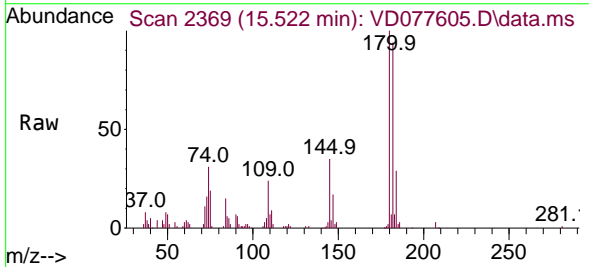
Instrument :
 MSVOA_D
 ClientSampleId :



Tgt Ion:128 Resp: 183120
 Ion Ratio Lower Upper
 128 100
 127 13.2 10.5 15.7
 129 10.6 9.0 13.6



#72
 1,2,3-Trichlorobenzene
 Concen: 20.307 ug/L
 RT: 15.522 min Scan# 2369
 Delta R.T. -0.000 min
 Lab File: VD077605.D
 Acq: 17 Nov 2023 11:28



Tgt Ion:180 Resp: 68287
 Ion Ratio Lower Upper
 180 100
 182 96.4 76.8 115.2
 145 33.5 26.0 39.0

