

Data Path : Z:\VOASRV\HPCHEM1\MSVOA D\DATA\VD111819\
 Data File : VD064256.D
 Acq On : 18 Nov 2019 11:06
 Operator : VA/SY
 Sample : VD1118SBL01
 Misc : 5.00G/5.00ml/MSVOA D/SOIL
 ALS Vial : 2 Sample Multiplier: 1

Instrument :
 MSVOA_D
 ClientSampleId :
 VD1118SBL01

Quant Time: Nov 19 04:47:32 2019
 Quant Method : Z:\VOASRV\HPCHEM1\MSVOA_D\METHOD\82D110819S.M
 Quant Title : SW846 8260
 QLast Update : Tue Nov 12 02:43:24 2019
 Response via : Initial Calibration

Internal Standards	R.T.	QIon	Response	Conc	Units	Dev(Min)
1) Pentafluorobenzene	7.98	168	1038327	50.00	ug/l	0.00
34) 1,4-Difluorobenzene	8.87	114	1478305	50.00	ug/l	0.00
63) Chlorobenzene-d5	11.65	117	1271171	50.00	ug/l	0.00
72) 1,4-Dichlorobenzene-d4	13.58	152	605514	50.00	ug/l	0.00

System Monitoring Compounds	R.T.	QIon	Response	Conc	Units	Dev(Min)
33) 1,2-Dichloroethane-d4	8.33	65	441913	51.75	ug/l	0.00
Spiked Amount				50.000		
			Recovery	=	103.50%	
35) Dibromofluoromethane	7.91	113	441299	52.00	ug/l	0.00
Spiked Amount				50.000		
			Recovery	=	104.00%	
50) Toluene-d8	10.34	98	1742497	54.43	ug/l	0.00
Spiked Amount				50.000		
			Recovery	=	108.86%	
62) 4-Bromofluorobenzene	12.64	95	553478	49.93	ug/l	0.00
Spiked Amount				50.000		
			Recovery	=	99.86%	

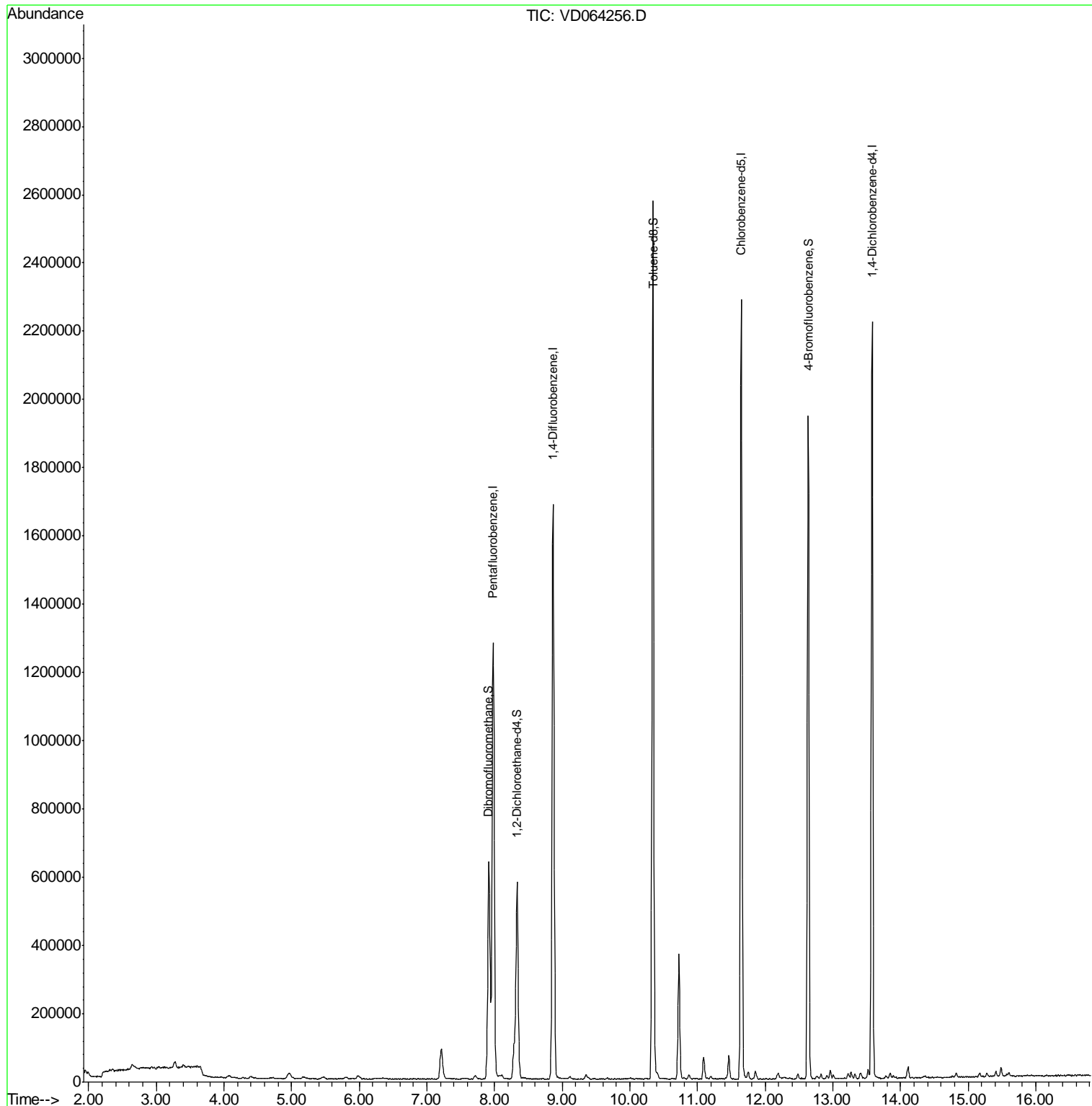
Target Compounds Qvalue

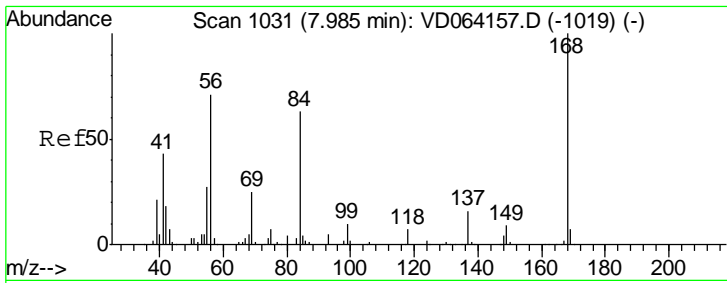
(#) = qualifier out of range (m) = manual integration (+) = signals summed

Data Path : Z:\VOASRV\HPCHEM1\MSVOA D\DATA\VD111819\
 Data File : VD064256.D
 Acq On : 18 Nov 2019 11:06
 Operator : VA/SY
 Sample : VD1118SBL01
 Misc : 5.00G/5.00ml/MSVOA D/SOIL
 ALS Vial : 2 Sample Multiplier: 1

Instrument :
 MSVOA_D
 ClientSampleId :
 VD1118SBL01

Quant Time: Nov 19 04:47:32 2019
 Quant Method : Z:\VOASRV\HPCHEM1\MSVOA_D\METHOD\82D110819S.M
 Quant Title : SW846 8260
 QLast Update : Tue Nov 12 02:43:24 2019
 Response via : Initial Calibration

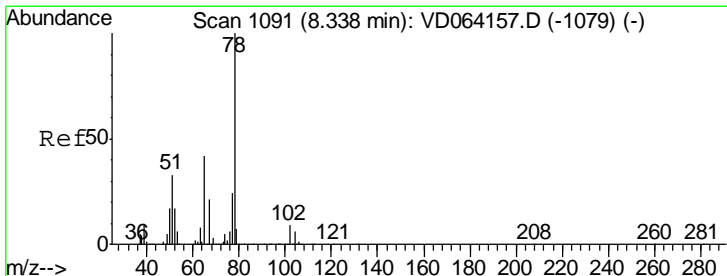
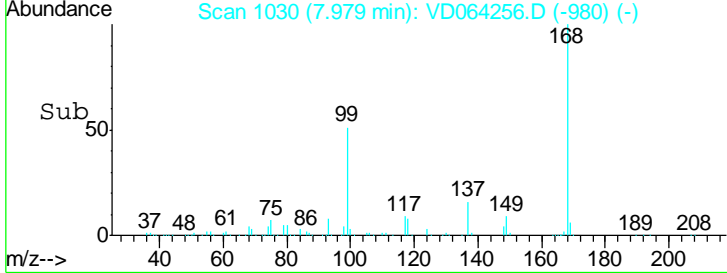
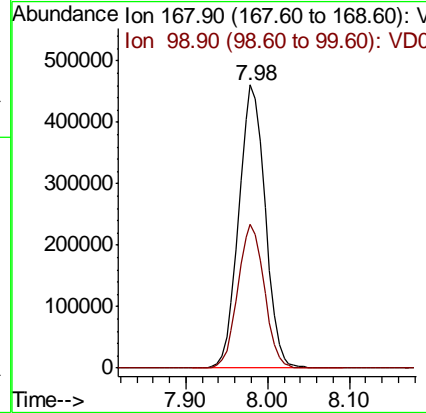
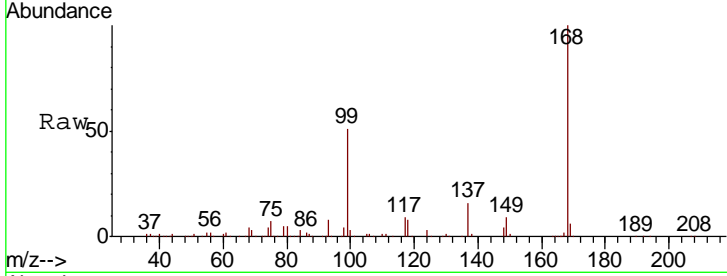




#1
 Pentafluorobenzene
 Concen: 50.000 ug/l
 RT: 7.98 min Scan# 1030
 Delta R.T. -0.01 min
 Lab File: VD064256.D
 Acq: 18 Nov 2019 11:06

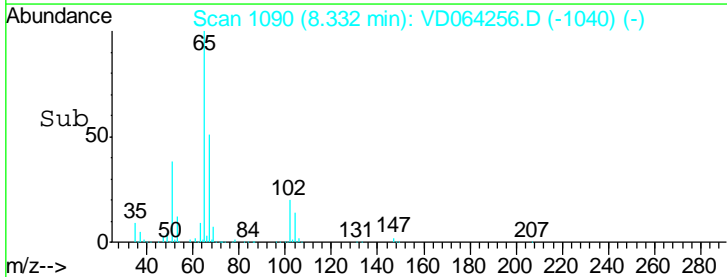
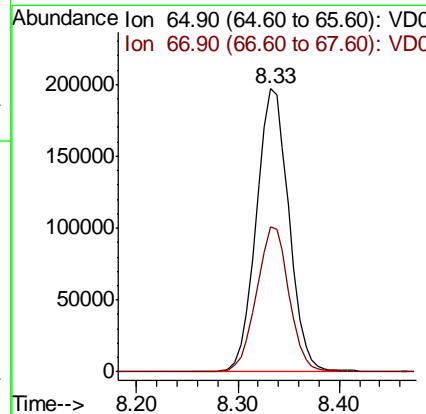
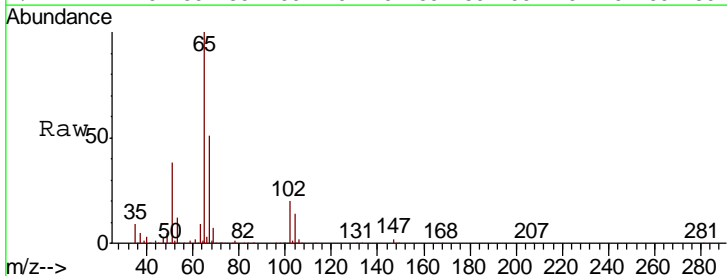
Instrument :
 MSVOA_D
 ClientSampled :
 VD1118SBL01

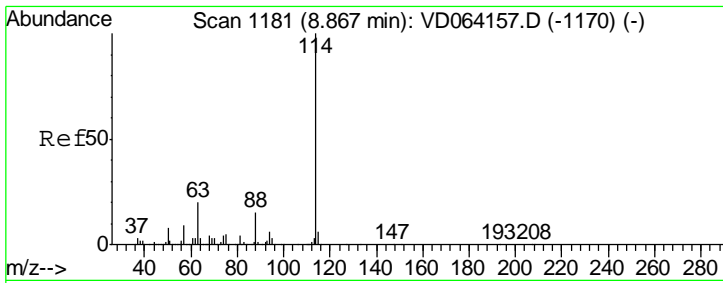
Tgt Ion: 168 Resp: 1038327
 Ion Ratio Lower Upper
 168 100
 99 50.8 41.6 62.4



#33
 1,2-Dichloroethane-d4
 Concen: 51.749 ug/l
 RT: 8.33 min Scan# 1090
 Delta R.T. -0.01 min
 Lab File: VD064256.D
 Acq: 18 Nov 2019 11:06

Tgt Ion: 65 Resp: 441913
 Ion Ratio Lower Upper
 65 100
 67 51.3 0.0 104.4

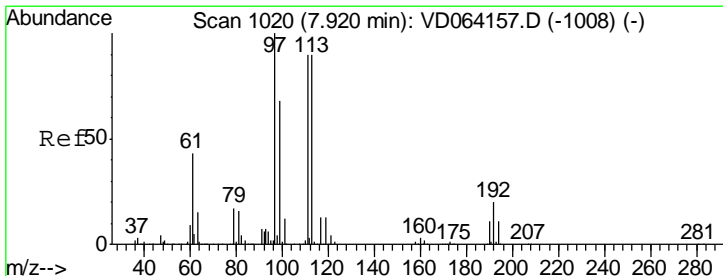
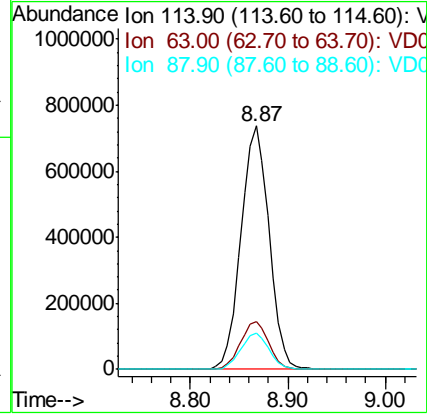
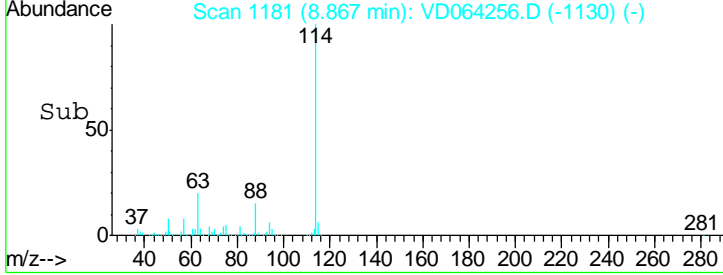
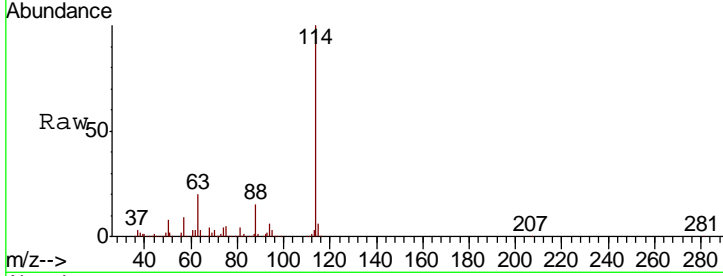




#34
 1,4-Difluorobenzene
 Concen: 50.000 ug/l
 RT: 8.87 min Scan# 1181
 Delta R.T. -0.00 min
 Lab File: VD064256.D
 Acq: 18 Nov 2019 11:06

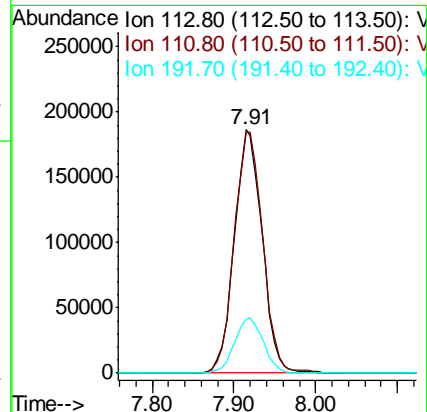
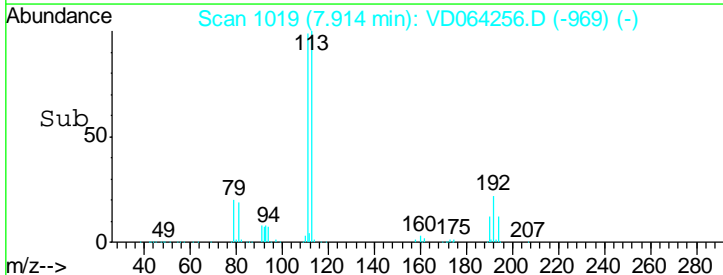
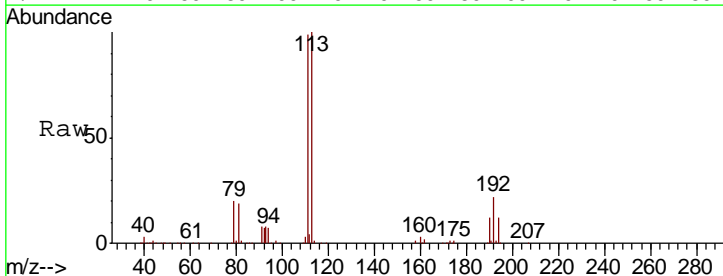
Instrument : MSVOA_D
 ClientSampleID : VD1118SBL01

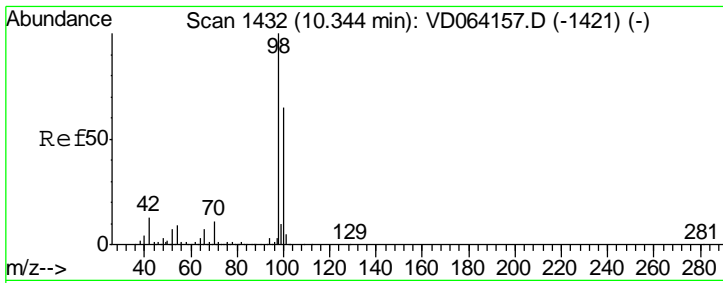
Tgt Ion	Resp	Lower	Upper
114	100		
63	19.5	0.0	40.0
88	15.0	0.0	30.2



#35
 Dibromofluoromethane
 Concen: 52.005 ug/l
 RT: 7.91 min Scan# 1019
 Delta R.T. -0.01 min
 Lab File: VD064256.D
 Acq: 18 Nov 2019 11:06

Tgt Ion	Resp	Lower	Upper
113	100		
111	101.7	81.5	122.3
192	23.5	18.8	28.2



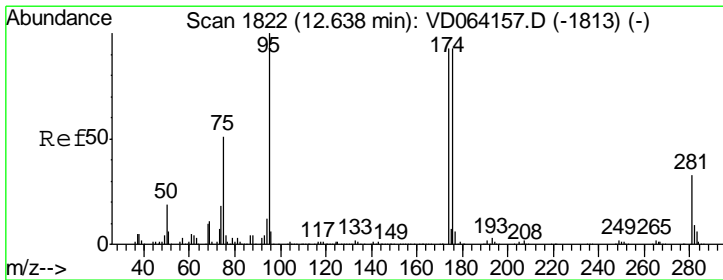
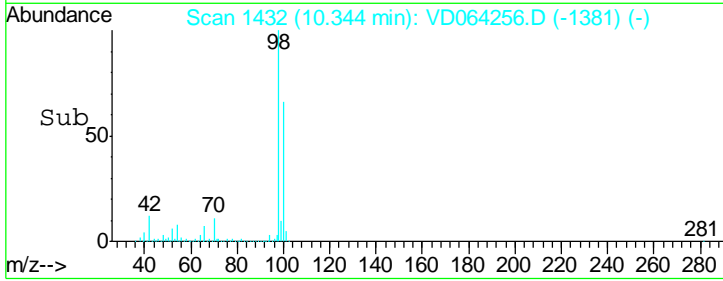
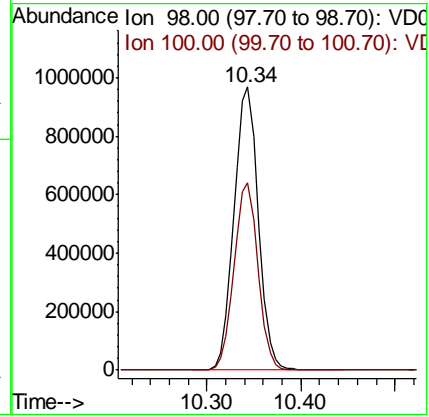
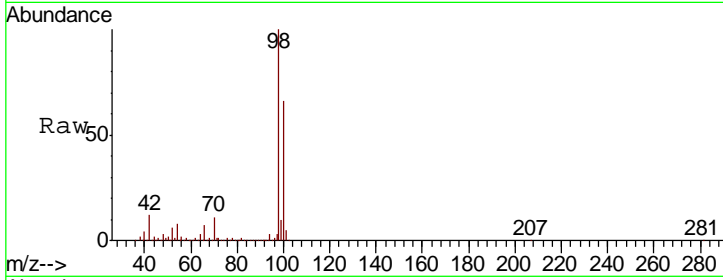


#50
 Toluene-d8
 Concen: 54.433 ug/l
 RT: 10.34 min Scan# 1432
 Delta R.T. -0.00 min
 Lab File: VD064256.D
 Acq: 18 Nov 2019 11:06

Instrument : MSVOA_D
 ClientSampled : VD1118SBL01

Tgt Ion: 98 Resp: 1742497

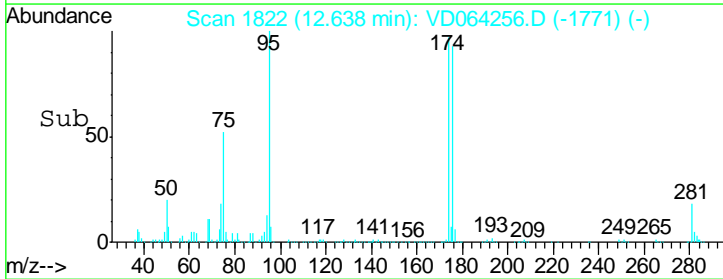
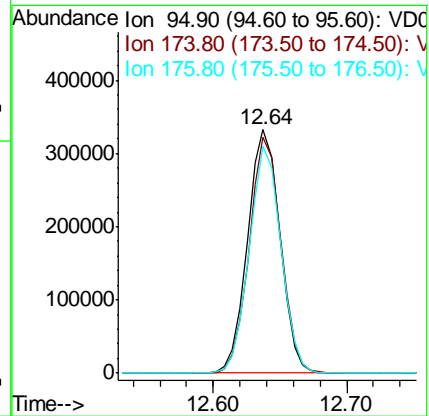
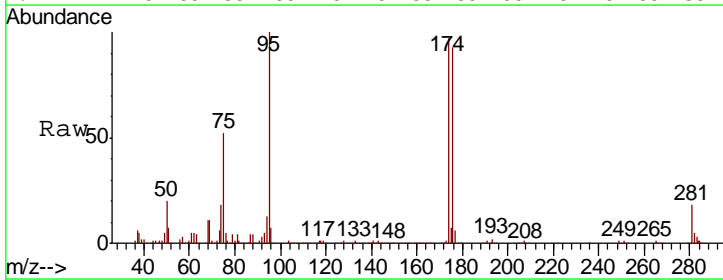
Ion	Ratio	Lower	Upper
98	100		
100	65.2	52.6	78.8

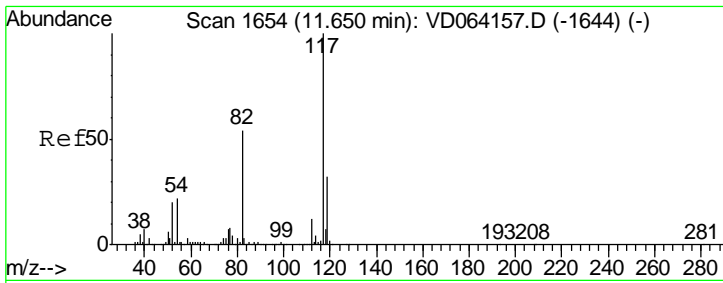


#62
 4-Bromofluorobenzene
 Concen: 49.926 ug/l
 RT: 12.64 min Scan# 1822
 Delta R.T. -0.00 min
 Lab File: VD064256.D
 Acq: 18 Nov 2019 11:06

Tgt Ion: 95 Resp: 553478

Ion	Ratio	Lower	Upper
95	100		
174	94.8	0.0	183.6
176	91.5	0.0	180.2



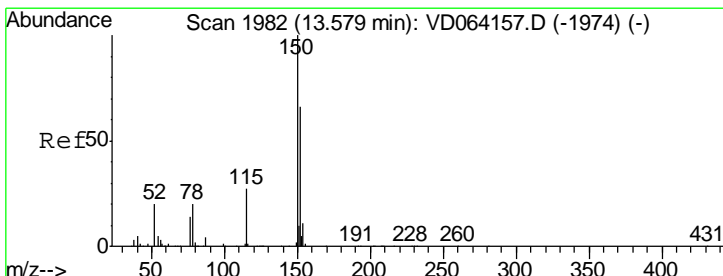
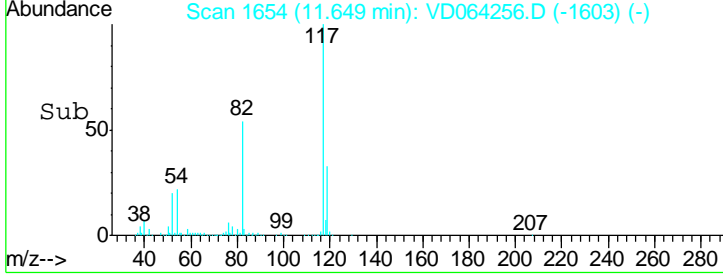
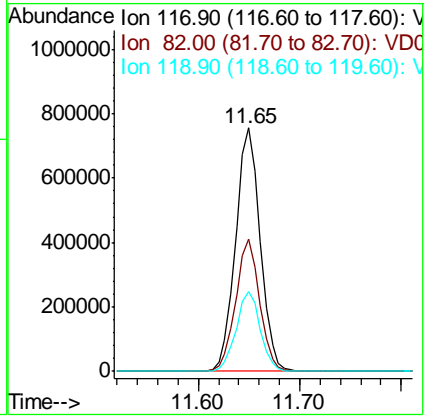
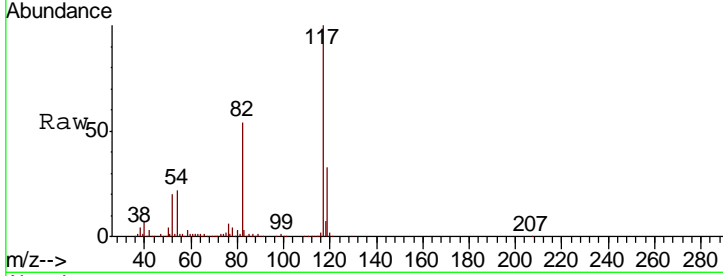


#63
 Chlorobenzene-d5
 Concen: 50.000 ug/l
 RT: 11.65 min Scan# 1654
 Delta R.T. -0.00 min
 Lab File: VD064256.D
 Acq: 18 Nov 2019 11:06

Instrument : MSVOA_D
 ClientSampled : VD1118SBL01

Tgt Ion: 117 Resp: 1271171

Ion	Ratio	Lower	Upper
117	100		
82	54.2	42.8	64.2
119	33.0	25.6	38.4



#72
 1,4-Dichlorobenzene-d4
 Concen: 50.000 ug/l
 RT: 13.58 min Scan# 1983
 Delta R.T. 0.01 min
 Lab File: VD064256.D
 Acq: 18 Nov 2019 11:06

Tgt Ion: 152 Resp: 605514

Ion	Ratio	Lower	Upper
152	100		
115	55.1	27.4	82.2
150	156.4	0.0	351.6

