

Data Path : Z:\VOASRV\HPCHEM1\MSVOA D\DATA\VD112619\  
 Data File : VD064386.D  
 Acq On : 26 Nov 2019 16:14  
 Operator : VA/SY  
 Sample : K6024-03  
 Misc : 5.91G/5.00ml/MSVOA D/SOIL  
 ALS Vial : 13 Sample Multiplier: 1

Instrument :  
 MSVOA\_D  
 ClientSampleId :  
 B-3-(0.5-1.0)

Integration Parameters: RTEINT.P  
 Integrator: RTE  
 Smoothing : ON Filtering: 5  
 Sampling : 1 Min Area: 3 % of largest Peak  
 Start Thrs: 0.2 Max Peaks: 100  
 Stop Thrs : 0 Peak Location: TOP

If leading or trailing edge < 100 prefer < Baseline drop else tangent >  
 Peak separation: 5

Method : Z:\VOASRV\HPCHEM1\MSVOA\_D\METHOD\82D110819S.M  
 Title : SW846 8260

Signal : TIC

peak #	R.T. min	first scan	max scan	last scan	PK TY	peak height	corr. area	corr. % max.	% of total
1	7.920	1010	1020	1025	rBV	474574	1142408	33.58%	6.438%
2	7.985	1025	1031	1043	rVB	905388	2027670	59.61%	11.427%
3	8.338	1080	1091	1101	rBV	390865	891701	26.21%	5.025%
4	8.867	1172	1181	1196	rBV	1237412	2500588	73.51%	14.092%
5	9.114	1216	1223	1231	rVB3	37309	71556	2.10%	0.403%
6	10.344	1423	1432	1444	rBV	1867139	3401832	100.00%	19.172%
7	10.732	1491	1498	1506	rBV	20641	37452	1.10%	0.211%
8	11.649	1646	1654	1667	rBV	1652279	2851220	83.81%	16.068%
9	12.638	1814	1822	1835	rBV	1326363	2189931	64.38%	12.342%
10	13.585	1975	1983	1995	rBV	1605038	2629813	77.31%	14.821%

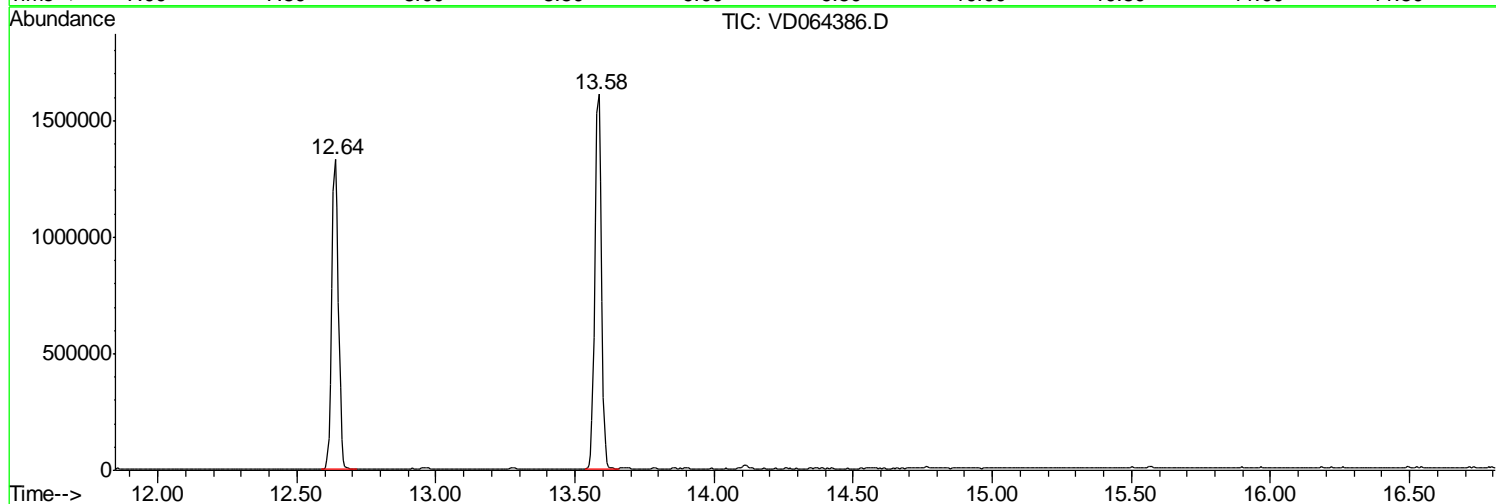
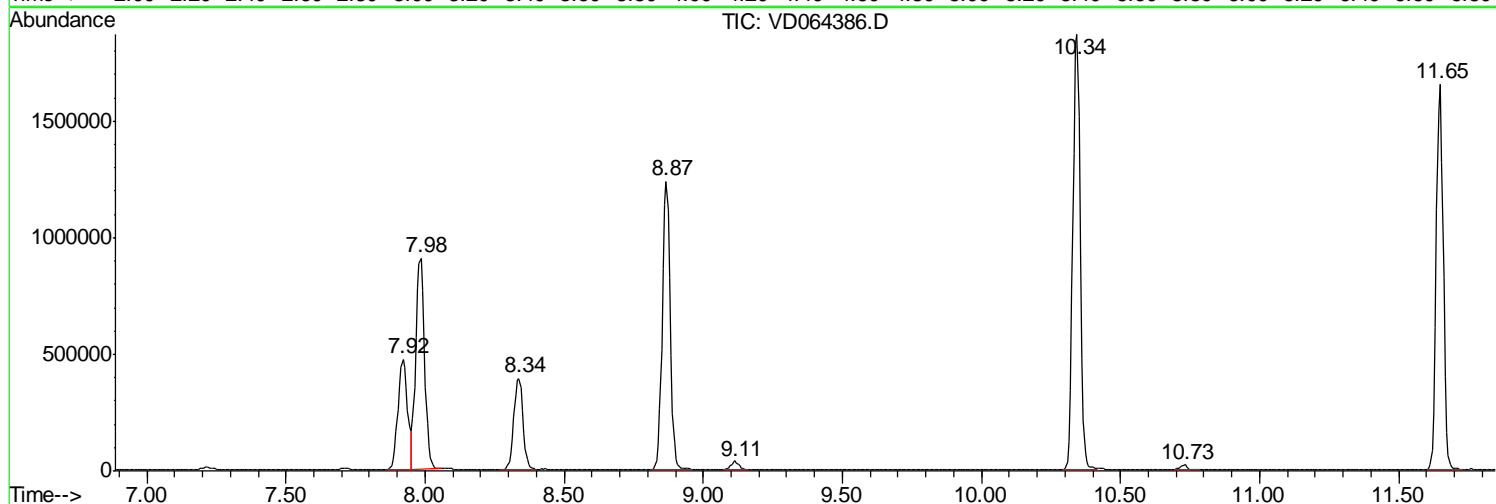
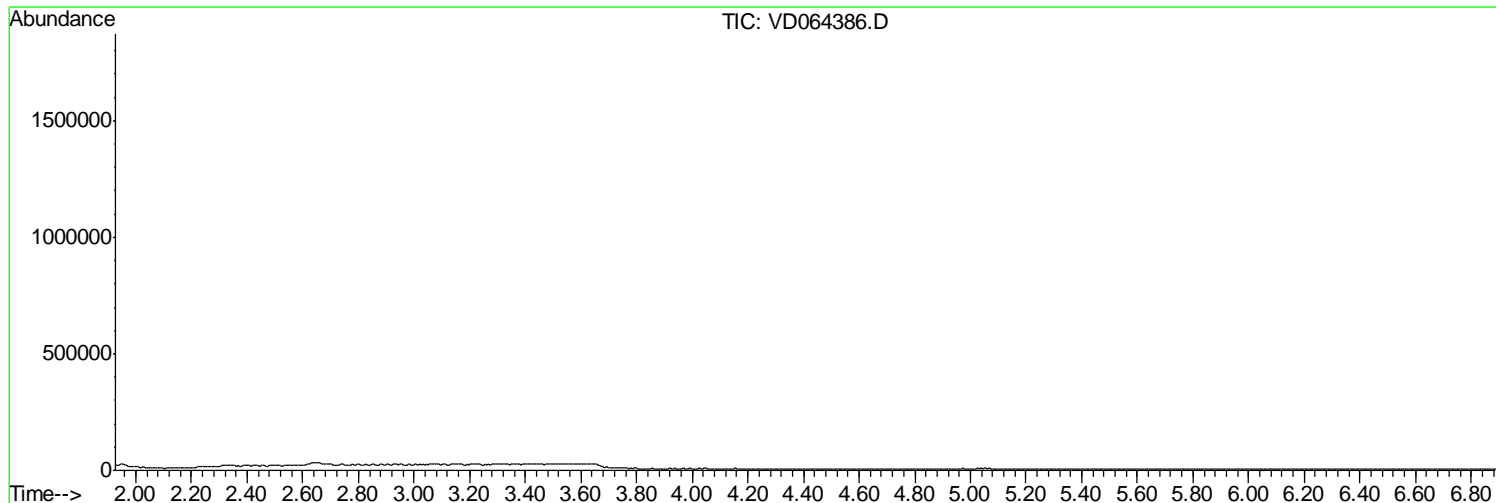
Sum of corrected areas: 17744171

Data Path : Z:\VOASRV\HPCHEM1\MSVOA D\DATA\VD112619\  
Data File : VD064386.D  
Acq On : 26 Nov 2019 16:14  
Operator : VA/SY  
Sample : K6024-03  
Misc : 5.91G/5.00ml/MSVOA D/SOIL  
ALS Vial : 13 Sample Multiplier: 1

Instrument :  
MSVOA\_D  
ClientSampled :  
B-3-(0.5-1.0)

Quant Method : Z:\VOASRV\HPCHEM1\MSVOA\_D\METHOD\82D110819S.M  
Quant Title : SW846 8260

TIC Library : C:\DATABASE\NIST11.L  
TIC Integration Parameters: LSCINT.P



Data Path : Z:\VOASRV\HPCHEM1\MSVOA\_D\DATA\VD112619\  
Data File : VD064386.D  
Acq On : 26 Nov 2019 16:14  
Operator : VA/SY  
Sample : K6024-03  
Misc : 5.91G/5.00ml/MSVOA\_D/SOIL  
ALS Vial : 13 Sample Multiplier: 1

Instrument :  
MSVOA\_D  
ClientSampleId :  
B-3-(0.5-1.0)

Quant Method : Z:\VOASRV\HPCHEM1\MSVOA\_D\METHOD\82D110819S.M  
Quant Title : SW846 8260

TIC Library : C:\DATABASE\NIST11.L  
TIC Integration Parameters: LSCINT.P

No Library Search Compounds Detected

\*\*\*\*\*

Data Path : Z:\VOASRV\HPCHEM1\MSVOA\_D\DATA\VD112619\  
Data File : VD064386.D  
Acq On : 26 Nov 2019 16:14  
Operator : VA/SY  
Sample : K6024-03  
Misc : 5.91G/5.00ml/MSVOA\_D/SOIL  
ALS Vial : 13 Sample Multiplier: 1

Instrument :  
MSVOA\_D  
ClientSampleId :  
B-3-(0.5-1.0)

Quant Method : Z:\VOASRV\HPCHEM1\MSVOA\_D\METHOD\82D110819S.M  
Quant Title : SW846 8260

TIC Library : C:\DATABASE\NIST11.L  
TIC Integration Parameters: LSCINT.P

TIC Top Hit name	RT	EstConc	Units	Response	--Internal Standard--			
					#	RT	Resp	Conc

---