

Data Path : Z:\voasrv\HPCHEM1\MSVOA_D\Data\VD113023\
 Data File : VD077716.D
 Acq On : 30 Nov 2023 19:35
 Operator : JC/SY
 Sample : VSTDCCC025EC
 Misc : 5.00G/10ml/MSVOA_D/SOIL
 ALS Vial : 1 Sample Multiplier: 1

Instrument :
 MSVOA_D
 ClientSampleId :

Quant Time: Nov 30 23:03:06 2023
 Quant Method : Z:\voasrv\HPCHEM1\MSVOA_D\Method\SFAMDLM112923SMA.M
 Quant Title : SFAM01.0
 QLast Update : Thu Nov 30 23:00:23 2023
 Response via : Initial Calibration

Compound	R.T.	QIon	Response	Conc	Units	Dev(Min)
Internal Standards						
1) 1,4-Difluorobenzene	8.781	114	290291	25.000	ug/L	0.00
28) Chlorobenzene-d5	11.581	117	268740	25.000	ug/L	0.00
58) 1,4-Dichlorobenzene-d4	13.522	152	138179	25.000	ug/L	0.00
System Monitoring Compounds						
4) Vinyl Chloride-d3	2.281	65	163047	20.596	ug/L	0.00
Spiked Amount	25.000	Range 30 - 150	Recovery =	82.400%		
7) Chloroethane-d5	2.811	69	139865	22.166	ug/L	0.00
Spiked Amount	25.000	Range 30 - 150	Recovery =	88.680%		
11) 1,1-Dichloroethene-d2	3.928	65	46323	22.568	ug/L	0.00
Spiked Amount	25.000	Range 45 - 110	Recovery =	90.280%		
21) 2-Butanone-d5	6.993	46	44607	44.584	ug/L	0.00
Spiked Amount	50.000	Range 20 - 135	Recovery =	89.160%		
24) Chloroform-d	7.569	84	192785	24.641	ug/L	0.00
Spiked Amount	25.000	Range 40 - 150	Recovery =	98.560%		
26) 1,2-Dichloroethane-d4	8.234	65	95438	24.076	ug/L	0.00
Spiked Amount	25.000	Range 70 - 130	Recovery =	96.320%		
32) Benzene-d6	8.204	84	399037	24.654	ug/L	0.00
Spiked Amount	25.000	Range 20 - 135	Recovery =	98.600%		
36) 1,2-Dichloropropane-d6	9.210	67	120256	24.351	ug/L	0.00
Spiked Amount	25.000	Range 70 - 120	Recovery =	97.400%		
41) Toluene-d8	10.269	98	372974	25.036	ug/L	0.00
Spiked Amount	25.000	Range 30 - 130	Recovery =	100.160%		
43) trans-1,3-Dichloroprop...	10.528	79	52527	24.053	ug/L	0.00
Spiked Amount	25.000	Range 30 - 135	Recovery =	96.200%		
47) 2-Hexanone-d5	10.875	63	39689	46.640	ug/L	0.00
Spiked Amount	50.000	Range 20 - 135	Recovery =	93.280%		
56) 1,1,2,2-Tetrachloroeth...	12.651	84	87247	24.448	ug/L	0.00
Spiked Amount	25.000	Range 45 - 120	Recovery =	97.800%		
66) 1,2-Dichlorobenzene-d4	13.816	152	118157	23.903	ug/L	0.00
Spiked Amount	25.000	Range 75 - 120	Recovery =	95.600%		
Target Compounds						
2) Dichlorodifluoromethane	1.934	85	105433	22.751	ug/L	97
3) Chloromethane	2.152	50	138262	20.767	ug/L	100
5) Vinyl chloride	2.287	62	176195	21.247	ug/L	99
6) Bromomethane	2.699	94	75017	17.076	ug/L	97
8) Chloroethane	2.846	64	117050	22.612	ug/L	95
9) Trichlorofluoromethane	3.181	101	158453	22.403	ug/L	99
10) 1,1,2-Trichloro-1,2,2-...	3.975	101	99612	23.874	ug/L	99
12) 1,1-Dichloroethene	3.952	96	88884	22.509	ug/L	95
13) Acetone	4.022	43	52125	40.662	ug/L	98
14) Carbon disulfide	4.281	76	325695	23.274	ug/L	99
15) Methyl Acetate	4.569	43	36299	19.781	ug/L	99
16) Methylene chloride	4.805	84	106663	20.694	ug/L	94
17) trans-1,2-Dichloroethene	5.316	96	98636	23.958	ug/L	95
18) Methyl tert-butyl Ether	5.322	73	199610	21.994	ug/L	99
19) 1,1-Dichloroethane	6.110	63	93975	12.111	ug/L	97
20) cis-1,2-Dichloroethene	7.081	96	105353	23.028	ug/L	97
22) 2-Butanone	7.081	43	60635	42.026	ug/L	# 65
23) Bromochloromethane	7.428	128	45048	23.651	ug/L	97
25) Chloroform	7.599	83	178912	23.420	ug/L	94

Data Path : Z:\voasrv\HPCHEM1\MSVOA_D\Data\VD113023\
 Data File : VD077716.D
 Acq On : 30 Nov 2023 19:35
 Operator : JC/SY
 Sample : VSTDCCC025EC
 Misc : 5.00G/10ml/MSVOA_D/SOIL
 ALS Vial : 1 Sample Multiplier: 1

Instrument :
 MSVOA_D
 ClientSampleId :

Quant Time: Nov 30 23:03:06 2023
 Quant Method : Z:\voasrv\HPCHEM1\MSVOA_D\Method\SFAMDLM112923SMA.M
 Quant Title : SFAM01.0
 QLast Update : Thu Nov 30 23:00:23 2023
 Response via : Initial Calibration

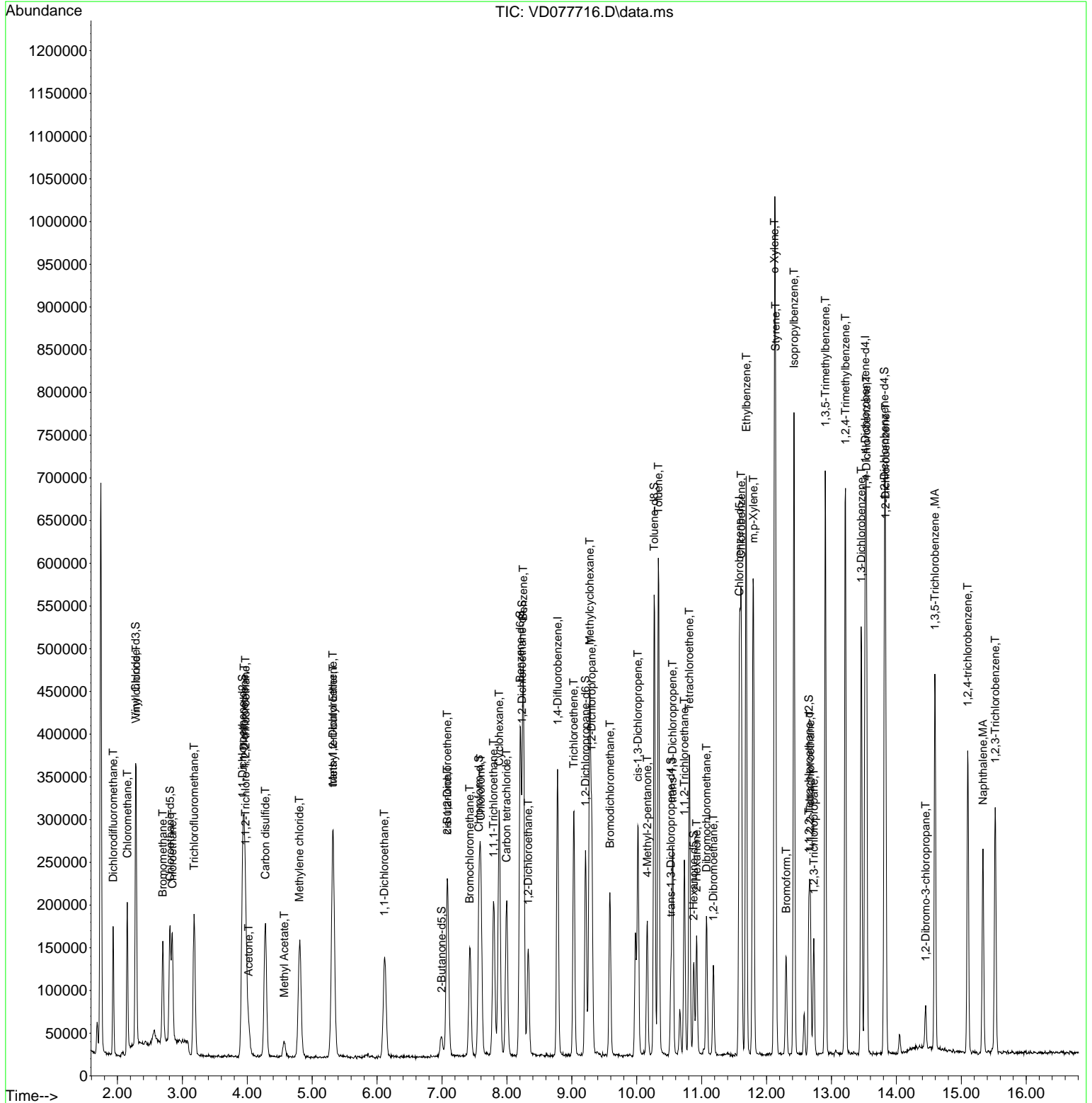
Compound	R.T.	QIon	Response	Conc	Units	Dev(Min)
27) 1,2-Dichloroethane	8.328	62	112224	23.486	ug/L	100
29) Cyclohexane	7.881	56	159698	22.520	ug/L	96
30) 1,1,1-Trichloroethane	7.793	97	154145	23.441	ug/L	99
31) Carbon tetrachloride	7.993	117	136791	23.654	ug/L	98
33) Benzene	8.252	78	408080	23.330	ug/L	100
34) Trichloroethene	9.028	95	102210	23.540	ug/L	98
35) Methylcyclohexane	9.275	83	179846	23.331	ug/L	98
37) 1,2-Dichloropropane	9.304	63	105909	23.223	ug/L	99
38) Bromodichloromethane	9.587	83	129946	23.431	ug/L	97
39) cis-1,3-Dichloropropene	10.016	75	164004	23.028	ug/L	97
40) 4-Methyl-2-pentanone	10.163	43	105047	41.741	ug/L	96
42) Toluene	10.334	91	442038	23.793	ug/L	97
44) trans-1,3-Dichloropropene	10.551	75	135439	22.768	ug/L	99
45) 1,1,2-Trichloroethane	10.734	97	72179	23.566	ug/L	94
46) Tetrachloroethene	10.810	164	77763	22.210	ug/L	89
48) 2-Hexanone	10.922	43	86288	40.339	ug/L	93
49) Dibromochloromethane	11.075	129	83322	22.878	ug/L	94
50) 1,2-Dibromoethane	11.181	107	67279	22.777	ug/L #	99
51) Chlorobenzene	11.610	112	275127	23.882	ug/L	98
52) Ethylbenzene	11.687	91	483830	23.492	ug/L	97
53) m,p-Xylene	11.798	106	183195	23.540	ug/L	98
54) o-Xylene	12.122	106	176837	23.744	ug/L	99
55) Styrene	12.140	104	311547	23.906	ug/L	94
57) 1,1,2,2-Tetrachloroethane	12.675	83	82075	22.615	ug/L	98
59) Bromoform	12.304	173	51850	22.679	ug/L #	97
60) Isopropylbenzene	12.422	105	482194	23.380	ug/L	99
61) 1,2,3-Trichloropropane	12.728	75	55161	21.703	ug/L	97
62) 1,3,5-Trimethylbenzene	12.904	105	358708	23.157	ug/L	99
63) 1,2,4-Trimethylbenzene	13.216	105	364300	23.195	ug/L	100
64) 1,3-Dichlorobenzene	13.457	146	207849	23.303	ug/L	98
65) 1,4-Dichlorobenzene	13.539	146	212609	22.971	ug/L	98
67) 1,2-Dichlorobenzene	13.834	146	186707	23.262	ug/L	97
68) 1,2-Dibromo-3-chloropr...	14.451	75	12011	20.041	ug/L	92
69) 1,3,5-Trichlorobenzene	14.592	180	136971	22.552	ug/L	99
70) 1,2,4-trichlorobenzene	15.098	180	114134	22.136	ug/L	98
71) Naphthalene	15.333	128	203608	21.600	ug/L	99
72) 1,2,3-Trichlorobenzene	15.522	180	101063	22.359	ug/L	97

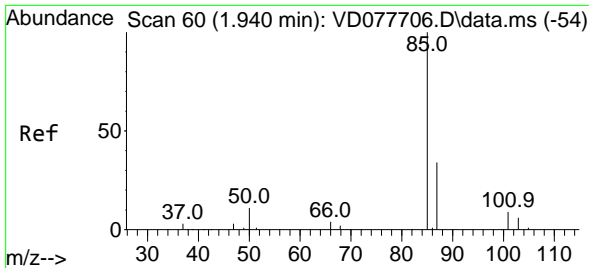
(#) = qualifier out of range (m) = manual integration (+) = signals summed

Data Path : Z:\voasrv\HPCHEM1\MSVOA_D\Data\VD113023\
 Data File : VD077716.D
 Acq On : 30 Nov 2023 19:35
 Operator : JC/SY
 Sample : VSTDCCC025EC
 Misc : 5.00G/10ml/MSVOA_D/SOIL
 ALS Vial : 1 Sample Multiplier: 1

Instrument :
 MSVOA_D
 ClientSampleId :

Quant Time: Nov 30 23:03:06 2023
 Quant Method : Z:\voasrv\HPCHEM1\MSVOA_D\Method\SFAMDLM112923SMA.M
 Quant Title : SFAM01.0
 QLast Update : Thu Nov 30 23:00:23 2023
 Response via : Initial Calibration

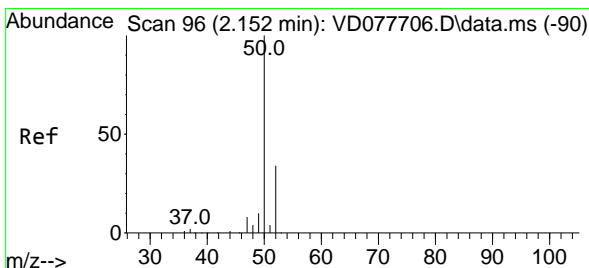
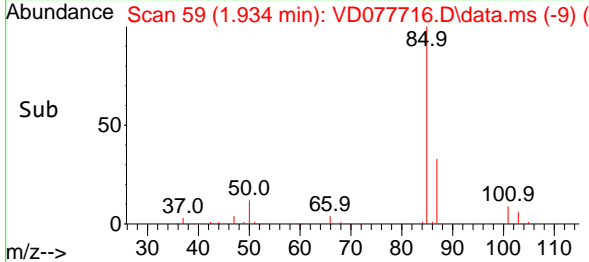
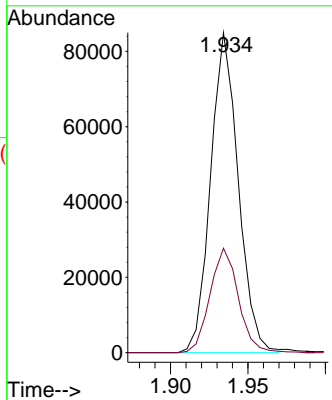
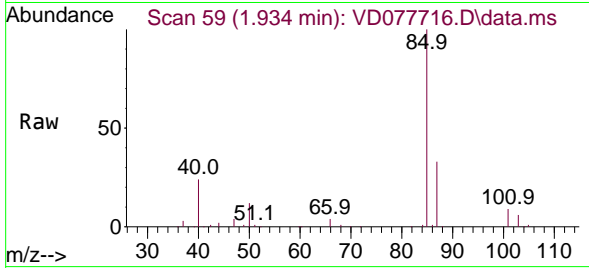




#2
 Dichlorodifluoromethane
 Concen: 22.751 ug/L
 RT: 1.934 min Scan# 51
 Delta R.T. -0.006 min
 Lab File: VD077716.D
 Acq: 30 Nov 2023 19:35

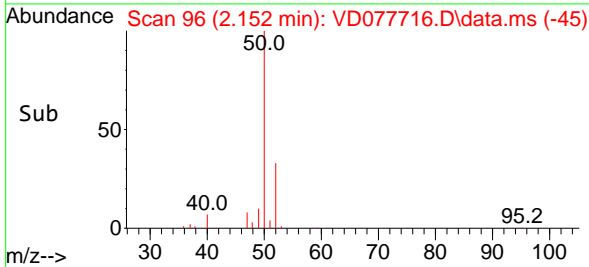
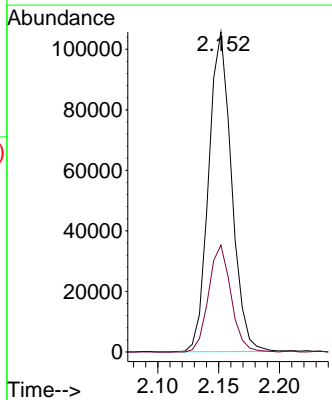
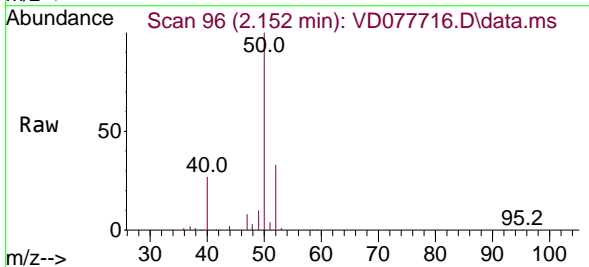
Instrument :
 MSVOA_D
 ClientSampleId :

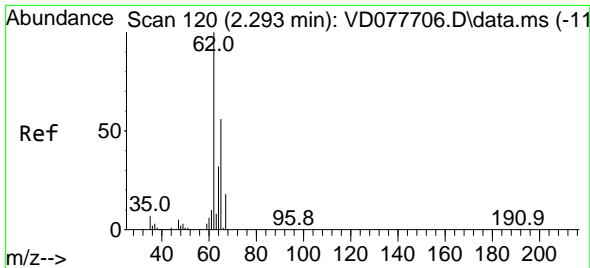
Tgt Ion: 85 Resp: 105433
 Ion Ratio Lower Upper
 85 100
 87 33.5 25.6 38.4



#3
 Chloromethane
 Concen: 20.767 ug/L
 RT: 2.152 min Scan# 96
 Delta R.T. 0.000 min
 Lab File: VD077716.D
 Acq: 30 Nov 2023 19:35

Tgt Ion: 50 Resp: 138262
 Ion Ratio Lower Upper
 50 100
 52 33.4 23.2 43.2

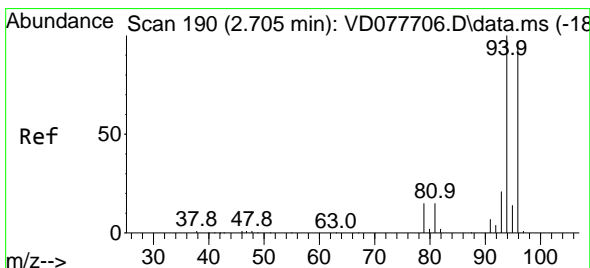
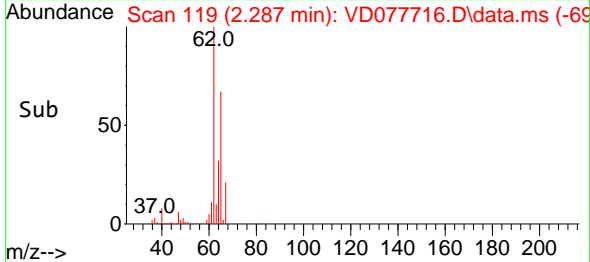
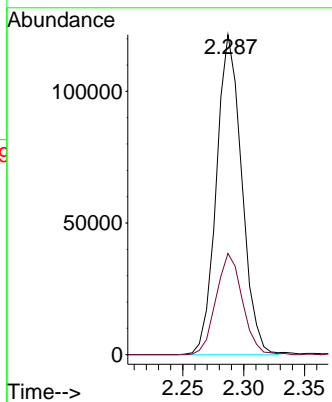
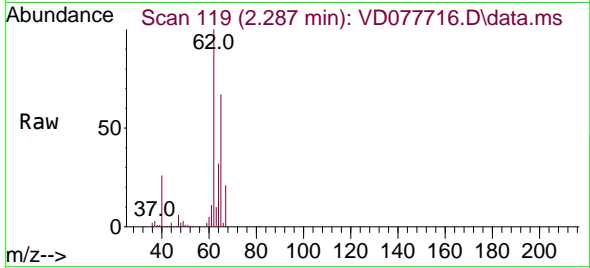




#5
 Vinyl chloride
 Concen: 21.247 ug/L
 RT: 2.287 min Scan# 11
 Delta R.T. -0.006 min
 Lab File: VD077716.D
 Acq: 30 Nov 2023 19:35

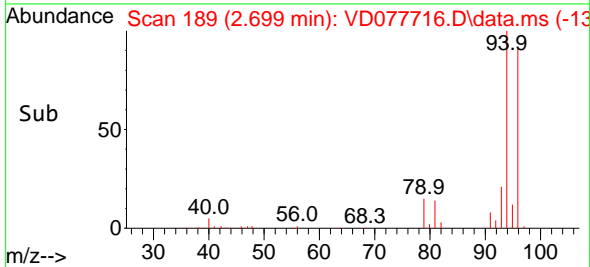
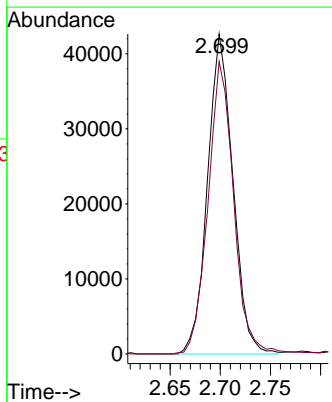
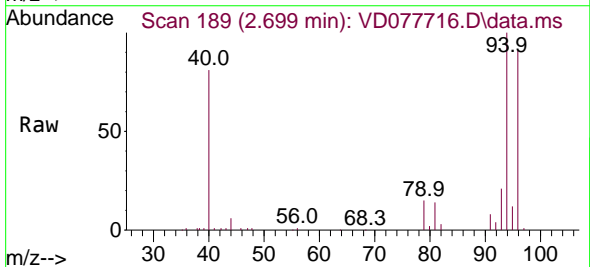
Instrument :
 MSVOA_D
 ClientSampleId :

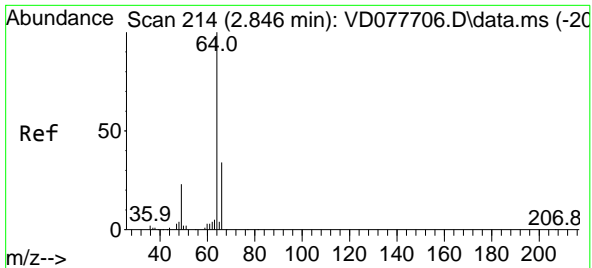
Tgt Ion: 62 Resp: 176195
 Ion Ratio Lower Upper
 62 100
 64 31.7 22.6 42.0



#6
 Bromomethane
 Concen: 17.076 ug/L
 RT: 2.699 min Scan# 189
 Delta R.T. -0.006 min
 Lab File: VD077716.D
 Acq: 30 Nov 2023 19:35

Tgt Ion: 94 Resp: 75017
 Ion Ratio Lower Upper
 94 100
 96 91.4 66.0 122.6

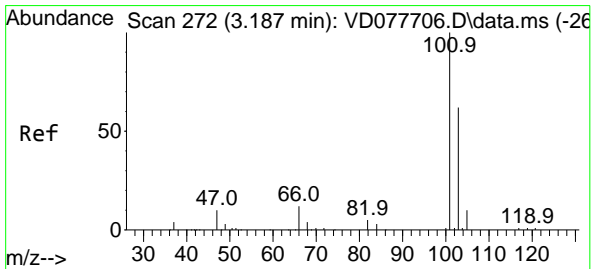
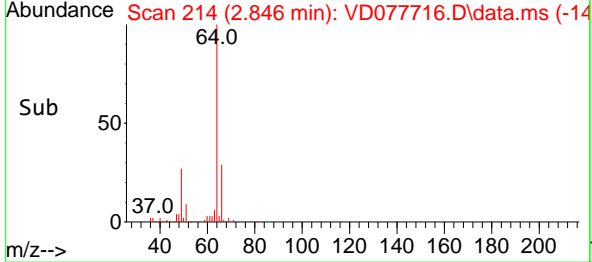
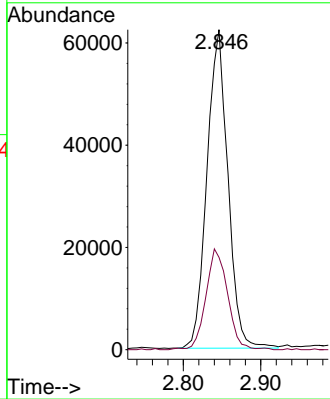
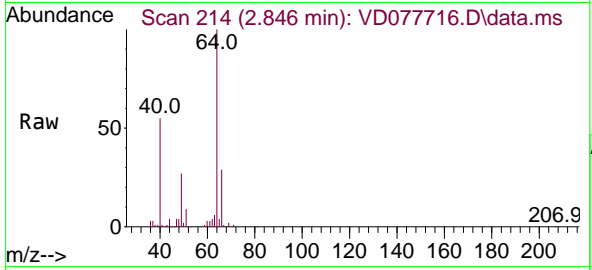




#8
 Chloroethane
 Concen: 22.612 ug/L
 RT: 2.846 min Scan# 214
 Delta R.T. 0.000 min
 Lab File: VD077716.D
 Acq: 30 Nov 2023 19:35

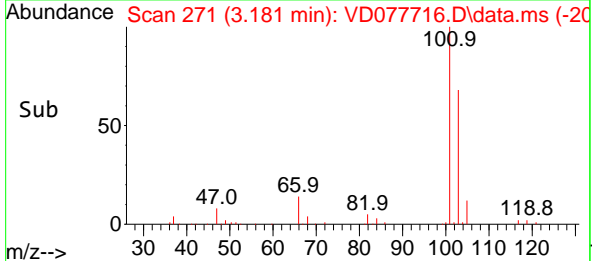
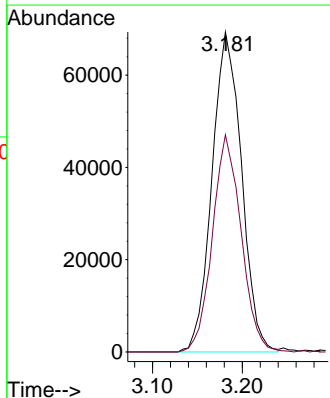
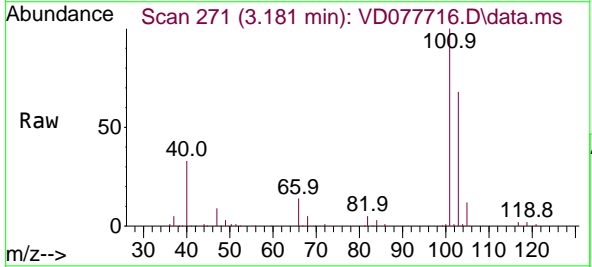
Instrument :
 MSVOA_D
 ClientSampleId :

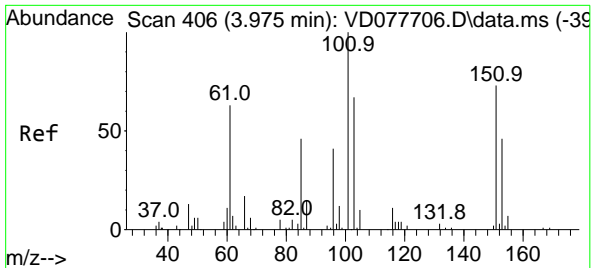
Tgt Ion: 64 Resp: 117050
 Ion Ratio Lower Upper
 64 100
 66 28.9 22.0 41.0



#9
 Trichlorofluoromethane
 Concen: 22.403 ug/L
 RT: 3.181 min Scan# 271
 Delta R.T. -0.006 min
 Lab File: VD077716.D
 Acq: 30 Nov 2023 19:35

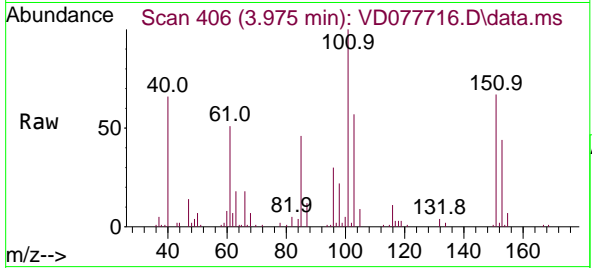
Tgt Ion: 101 Resp: 158453
 Ion Ratio Lower Upper
 101 100
 103 66.0 52.5 78.7



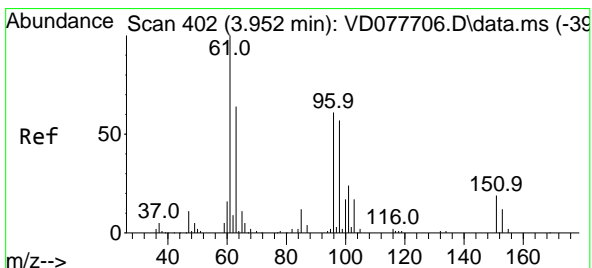
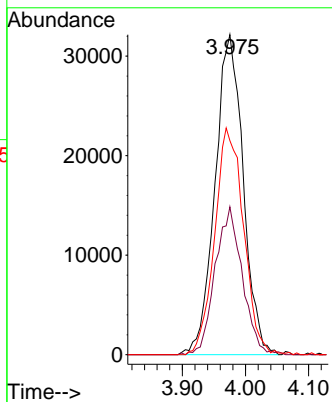
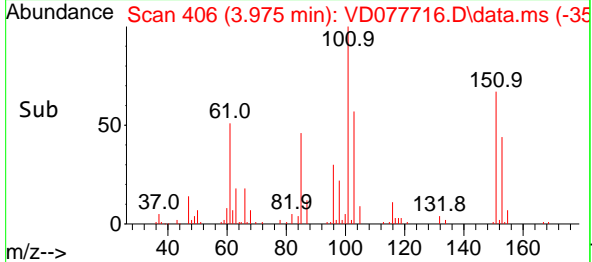


#10
 1,1,2-Trichloro-1,2,2-trifluoroethane
 Concen: 23.874 ug/L
 RT: 3.975 min Scan# 406
 Delta R.T. 0.000 min
 Lab File: VD077716.D
 Acq: 30 Nov 2023 19:35

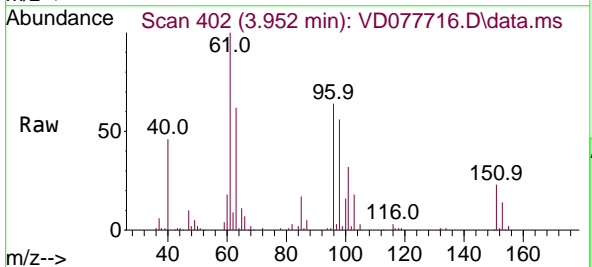
Instrument : MSVOA_D
 ClientSampleId :



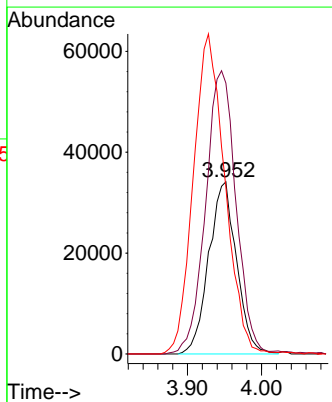
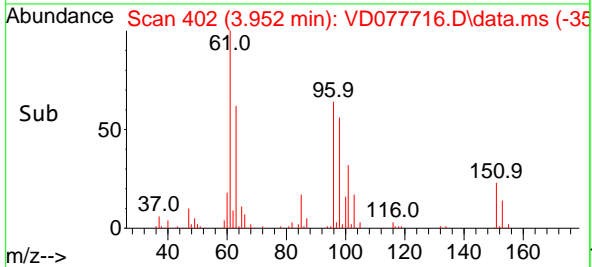
Tgt Ion:101 Resp: 99612
 Ion Ratio Lower Upper
 101 100
 85 44.2 35.8 53.6
 151 72.3 57.0 85.6

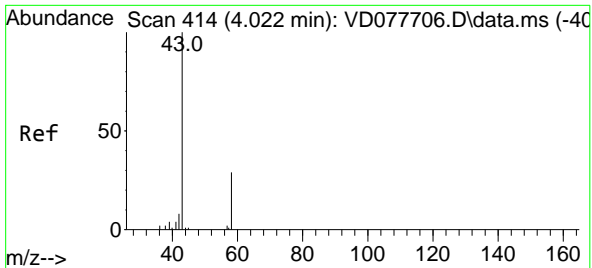


#12
 1,1-Dichloroethene
 Concen: 22.509 ug/L
 RT: 3.952 min Scan# 402
 Delta R.T. 0.000 min
 Lab File: VD077716.D
 Acq: 30 Nov 2023 19:35



Tgt Ion: 96 Resp: 88884
 Ion Ratio Lower Upper
 96 100
 61 157.2 108.6 201.6
 63 96.9 60.3 111.9

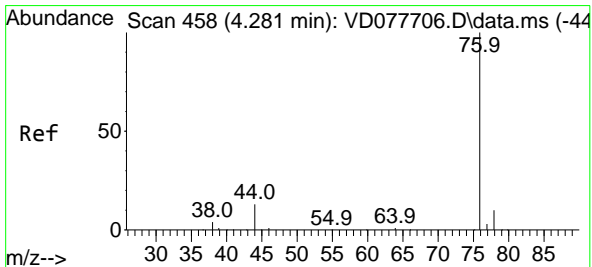
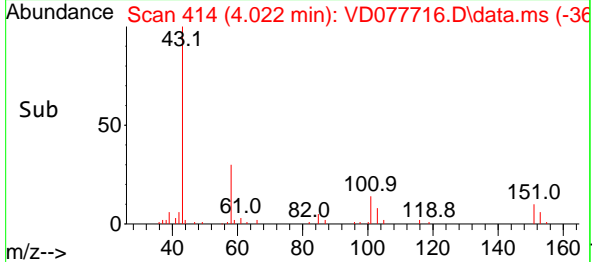
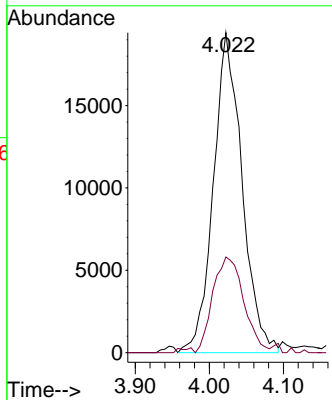
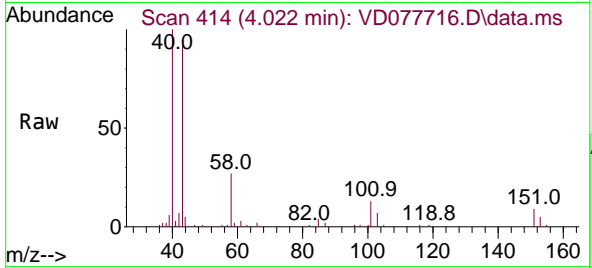




#13
 Acetone
 Concen: 40.662 ug/L
 RT: 4.022 min Scan# 413
 Delta R.T. 0.000 min
 Lab File: VD077716.D
 Acq: 30 Nov 2023 19:35

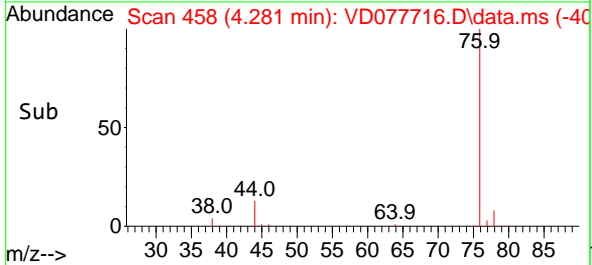
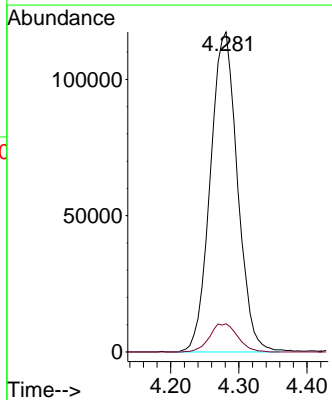
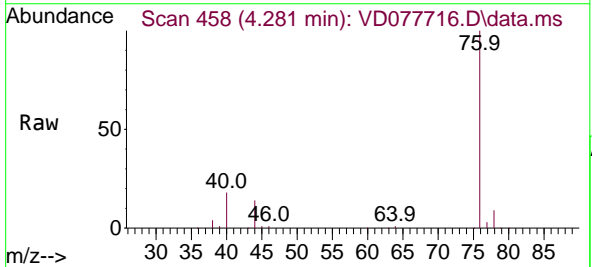
Instrument :
 MSVOA_D
 ClientSampleId :

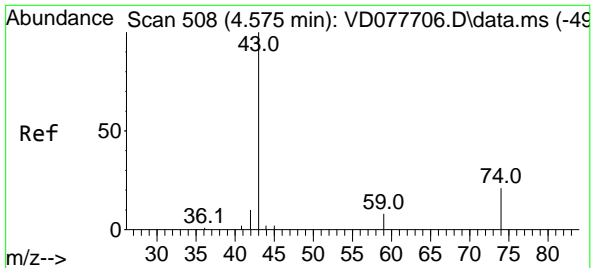
Tgt Ion: 43 Resp: 52125
 Ion Ratio Lower Upper
 43 100
 58 32.3 0.0 67.2



#14
 Carbon disulfide
 Concen: 23.274 ug/L
 RT: 4.281 min Scan# 458
 Delta R.T. 0.000 min
 Lab File: VD077716.D
 Acq: 30 Nov 2023 19:35

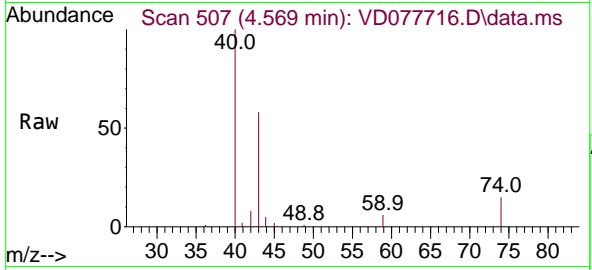
Tgt Ion: 76 Resp: 325695
 Ion Ratio Lower Upper
 76 100
 78 8.8 7.2 10.8



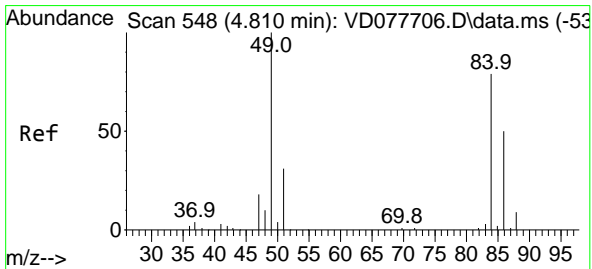
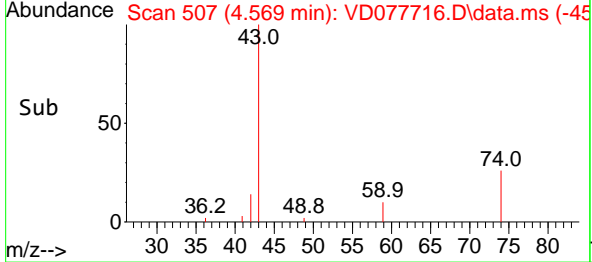
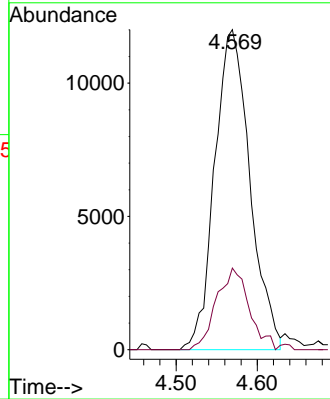


#15
 Methyl Acetate
 Concen: 19.781 ug/L
 RT: 4.569 min Scan# 507
 Delta R.T. -0.006 min
 Lab File: VD077716.D
 Acq: 30 Nov 2023 19:35

Instrument : MSVOA_D
 ClientSampleId :

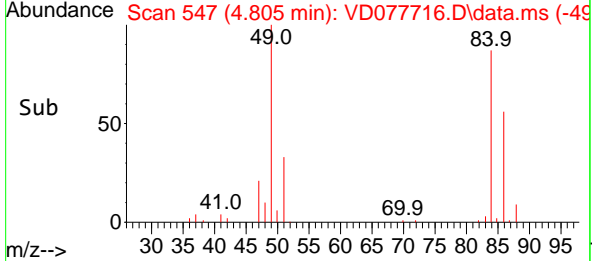
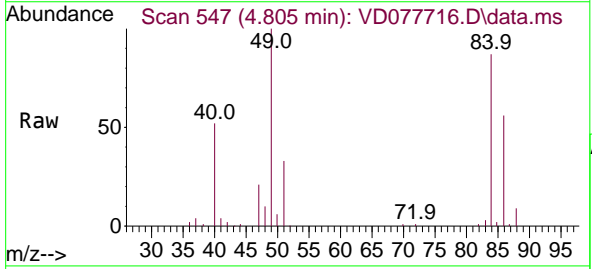
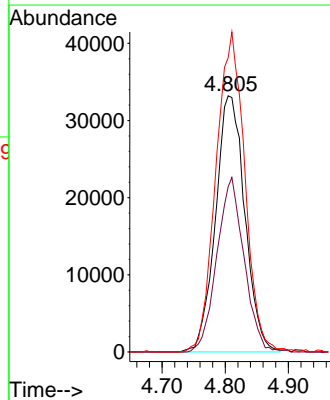


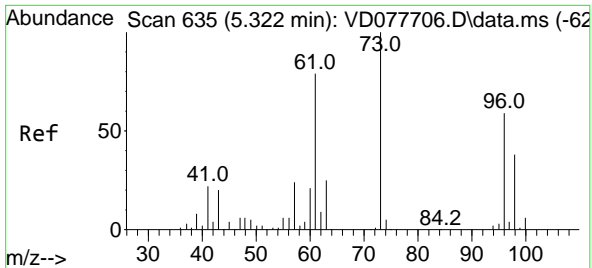
Tgt Ion: 43 Resp: 36299
 Ion Ratio Lower Upper
 43 100
 74 22.5 18.6 27.8



#16
 Methylene chloride
 Concen: 20.694 ug/L
 RT: 4.805 min Scan# 547
 Delta R.T. -0.006 min
 Lab File: VD077716.D
 Acq: 30 Nov 2023 19:35

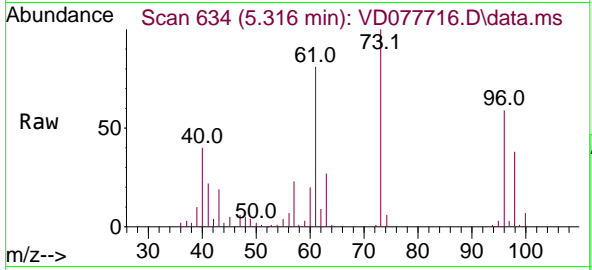
Tgt Ion: 84 Resp: 106663
 Ion Ratio Lower Upper
 84 100
 86 64.5 40.1 74.5
 49 115.0 83.2 154.6





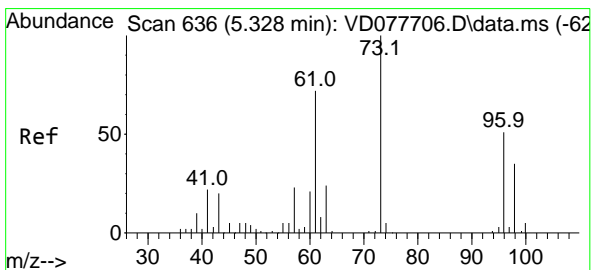
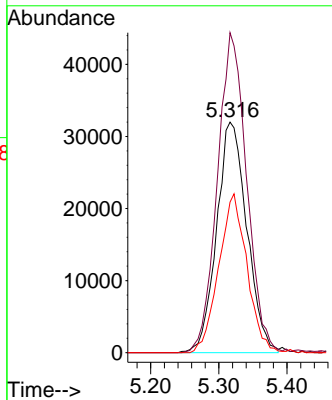
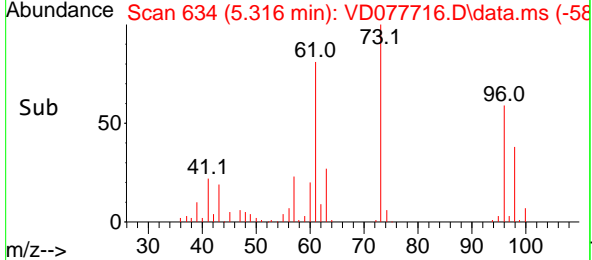
#17
 trans-1,2-Dichloroethene
 Concen: 23.958 ug/L
 RT: 5.316 min Scan# 61
 Delta R.T. -0.006 min
 Lab File: VD077716.D
 Acq: 30 Nov 2023 19:35

Instrument : MSVOA_D
 ClientSampleId :

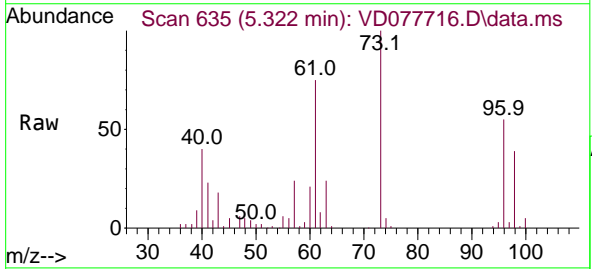


Tgt Ion: 96 Resp: 98636

Ion	Ratio	Lower	Upper
96	100		
61	138.7	92.3	171.3
98	65.3	44.7	82.9

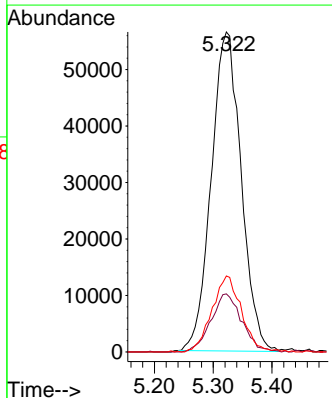
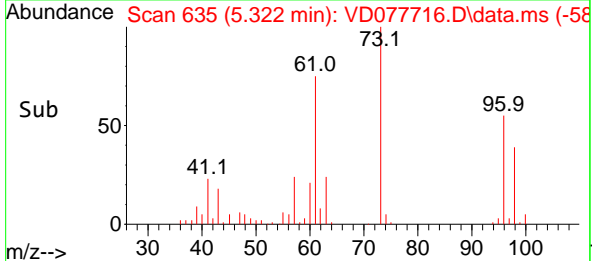


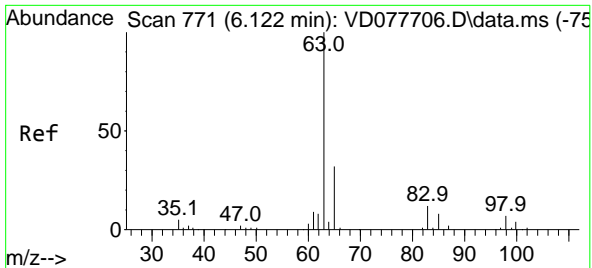
#18
 Methyl tert-butyl Ether
 Concen: 21.994 ug/L
 RT: 5.322 min Scan# 635
 Delta R.T. -0.006 min
 Lab File: VD077716.D
 Acq: 30 Nov 2023 19:35



Tgt Ion: 73 Resp: 199610

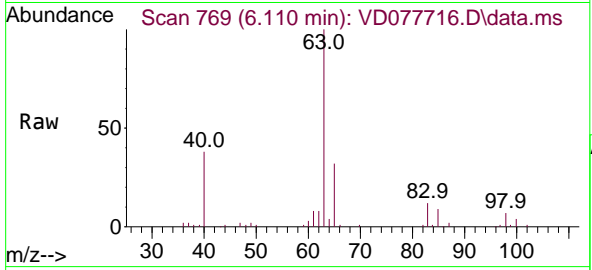
Ion	Ratio	Lower	Upper
73	100		
43	18.8	15.0	22.4
57	23.3	18.1	27.1



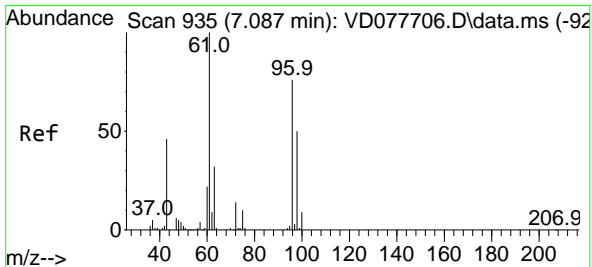
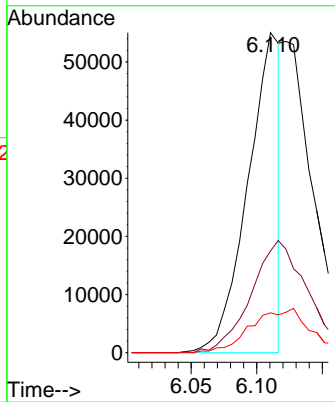
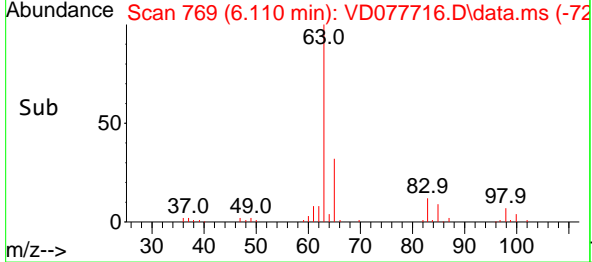


#19
 1,1-Dichloroethane
 Concen: 12.111 ug/L
 RT: 6.110 min Scan# 771
 Delta R.T. -0.012 min
 Lab File: VD077716.D
 Acq: 30 Nov 2023 19:35

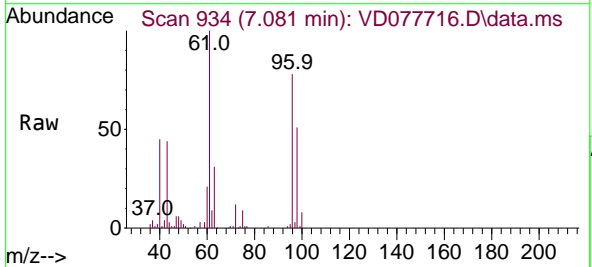
Instrument : MSVOA_D
 ClientSampleId :



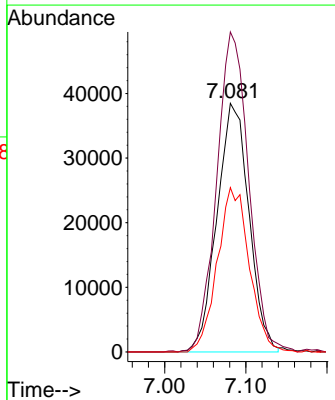
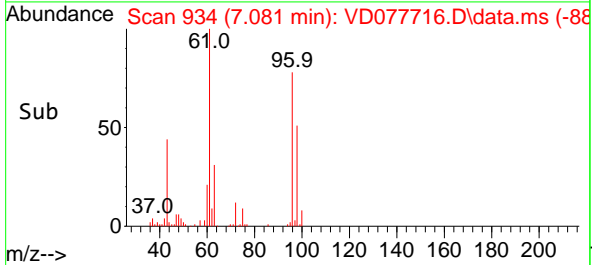
Tgt Ion: 63 Resp: 93975
 Ion Ratio Lower Upper
 63 100
 65 31.8 20.9 38.9
 83 12.5 9.7 17.9

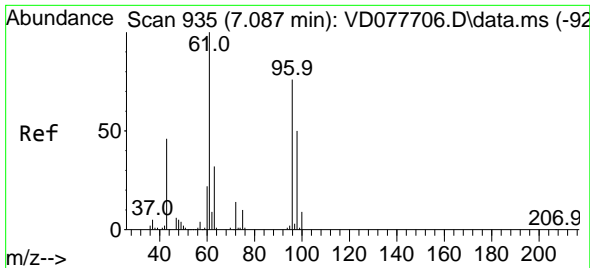


#20
 cis-1,2-Dichloroethene
 Concen: 23.028 ug/L
 RT: 7.081 min Scan# 934
 Delta R.T. -0.006 min
 Lab File: VD077716.D
 Acq: 30 Nov 2023 19:35



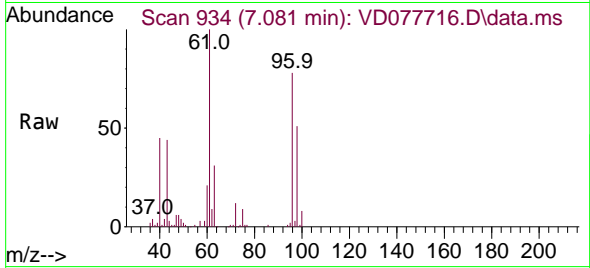
Tgt Ion: 96 Resp: 105353
 Ion Ratio Lower Upper
 96 100
 61 128.7 88.1 163.5
 98 66.1 44.1 81.9



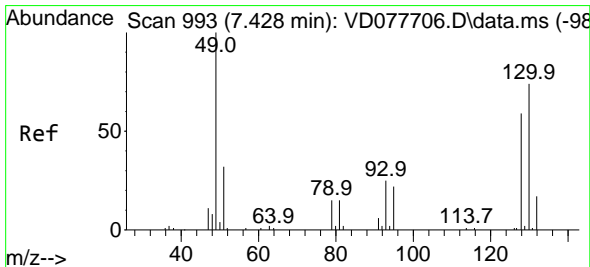
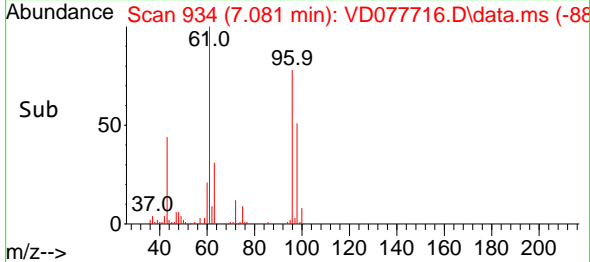
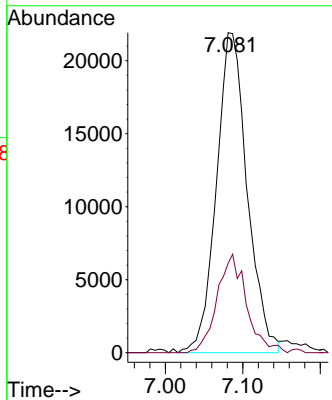


#22
 2-Butanone
 Concen: 42.026 ug/L
 RT: 7.081 min Scan# 913
 Delta R.T. -0.006 min
 Lab File: VD077716.D
 Acq: 30 Nov 2023 19:35

Instrument : MSVOA_D
 ClientSampleId :

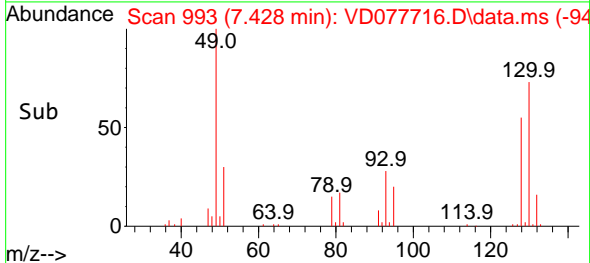
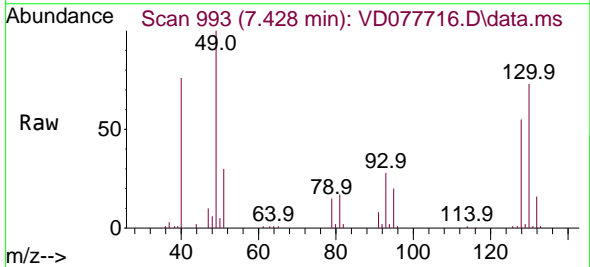
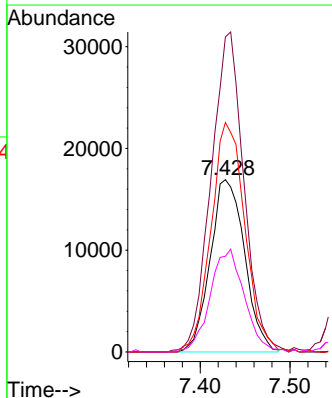


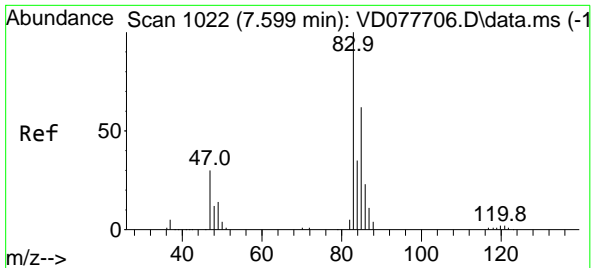
Tgt Ion: 43 Resp: 60635
 Ion Ratio Lower Upper
 43 100
 72 28.6 7.2 21.6#



#23
 Bromochloromethane
 Concen: 23.651 ug/L
 RT: 7.428 min Scan# 993
 Delta R.T. 0.000 min
 Lab File: VD077716.D
 Acq: 30 Nov 2023 19:35

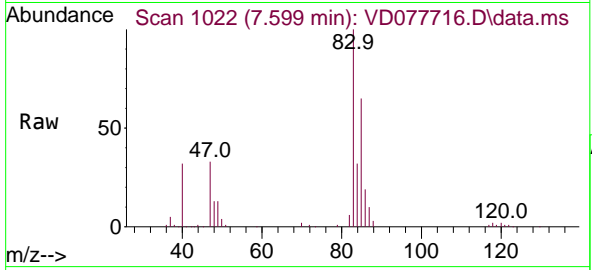
Tgt Ion:128 Resp: 45048
 Ion Ratio Lower Upper
 128 100
 49 182.9 124.7 231.5
 130 133.1 92.3 171.3
 51 55.5 47.1 70.7



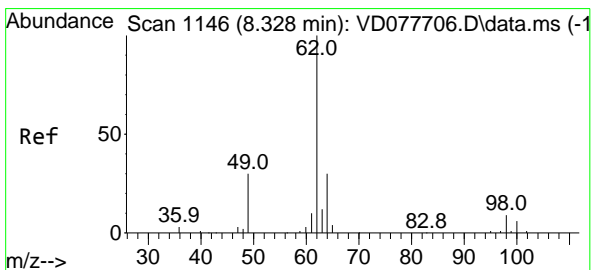
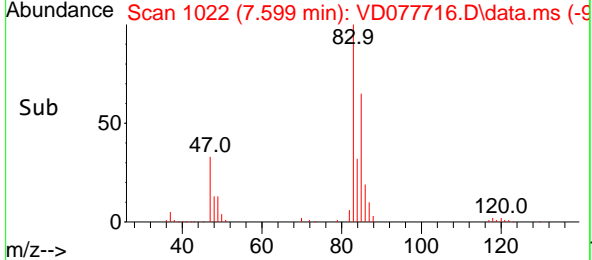
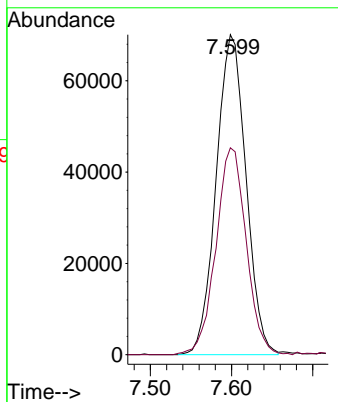


#25
 Chloroform
 Concen: 23.420 ug/L
 RT: 7.599 min Scan# 1022
 Delta R.T. 0.000 min
 Lab File: VD077716.D
 Acq: 30 Nov 2023 19:35

Instrument : MSVOA_D
 ClientSampleId :

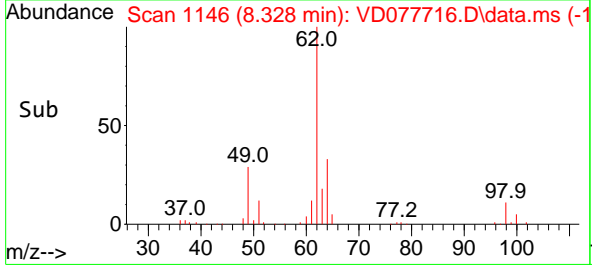
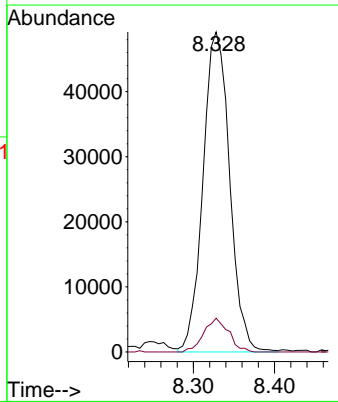
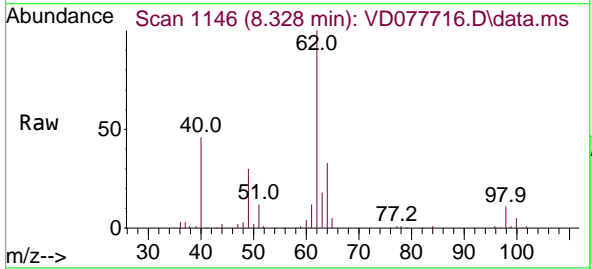


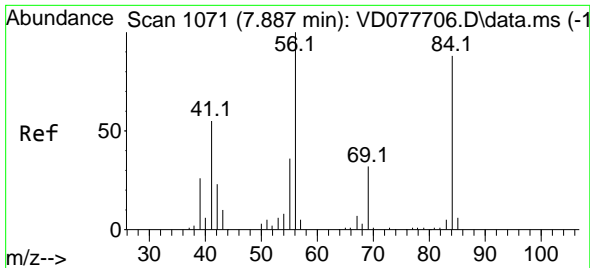
Tgt Ion: 83 Resp: 178912
 Ion Ratio Lower Upper
 83 100
 85 64.7 48.9 90.9



#27
 1,2-Dichloroethane
 Concen: 23.486 ug/L
 RT: 8.328 min Scan# 1146
 Delta R.T. 0.000 min
 Lab File: VD077716.D
 Acq: 30 Nov 2023 19:35

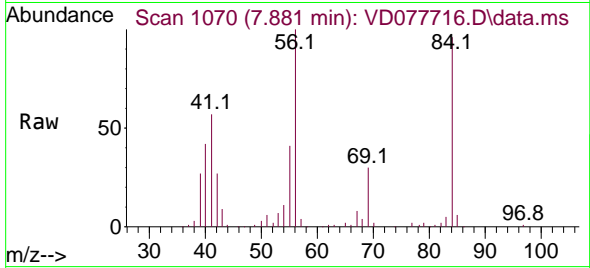
Tgt Ion: 62 Resp: 112224
 Ion Ratio Lower Upper
 62 100
 98 10.6 8.4 12.6



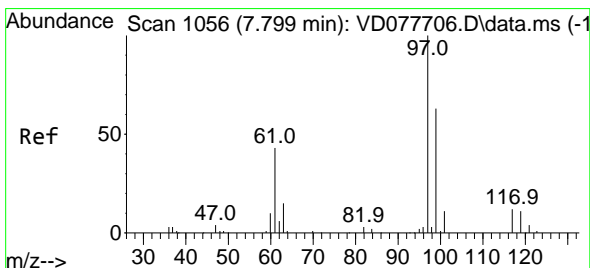
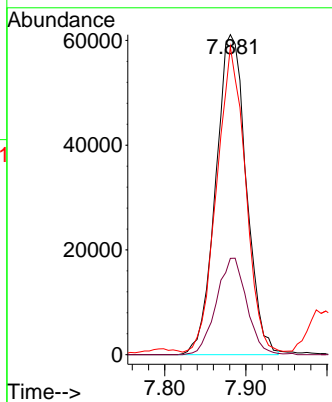
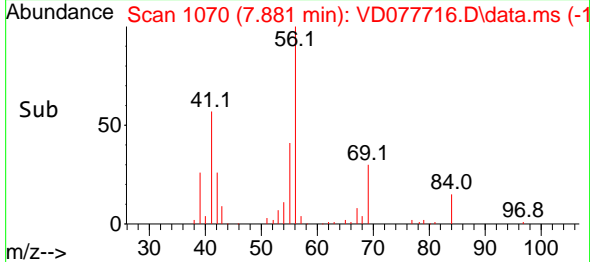


#29
 Cyclohexane
 Concen: 22.520 ug/L
 RT: 7.881 min Scan# 1070
 Delta R.T. -0.006 min
 Lab File: VD077716.D
 Acq: 30 Nov 2023 19:35

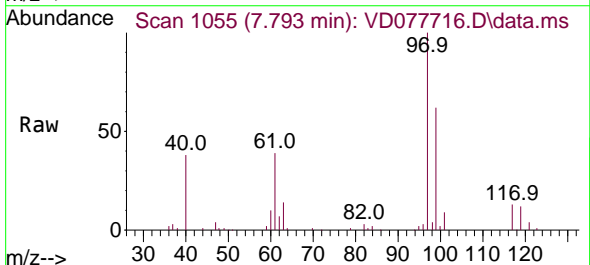
Instrument :
 MSVOA_D
 ClientSampleId :



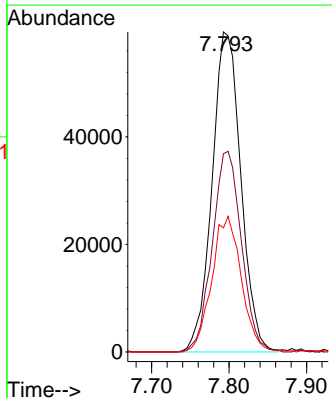
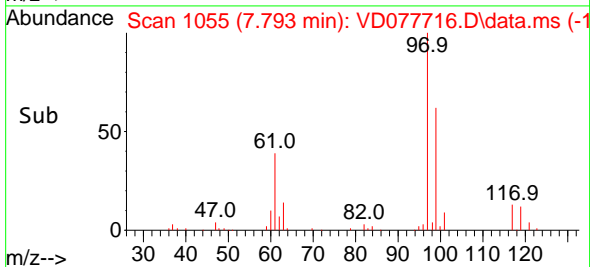
Tgt Ion: 56 Resp: 159698
 Ion Ratio Lower Upper
 56 100
 69 29.8 22.2 33.4
 84 89.3 68.5 102.7

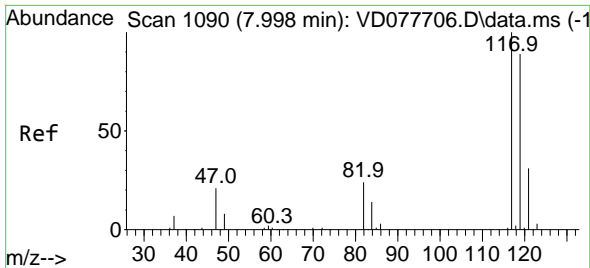


#30
 1,1,1-Trichloroethane
 Concen: 23.441 ug/L
 RT: 7.793 min Scan# 1055
 Delta R.T. -0.006 min
 Lab File: VD077716.D
 Acq: 30 Nov 2023 19:35



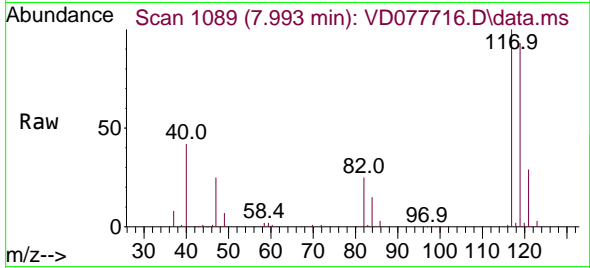
Tgt Ion: 97 Resp: 154145
 Ion Ratio Lower Upper
 97 100
 99 63.3 51.4 77.2
 61 43.6 35.4 53.2



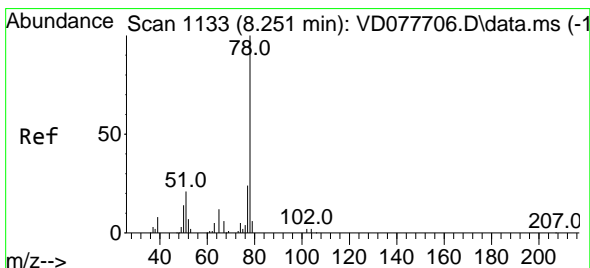
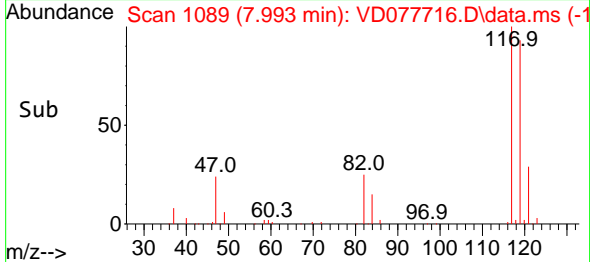
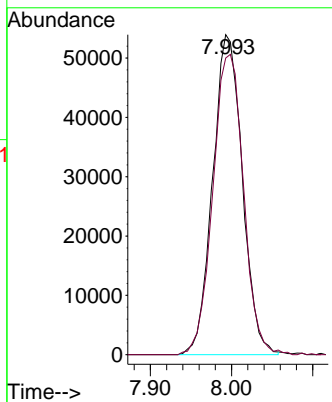


#31
 Carbon tetrachloride
 Concen: 23.654 ug/L
 RT: 7.993 min Scan# 1090
 Delta R.T. -0.006 min
 Lab File: VD077716.D
 Acq: 30 Nov 2023 19:35

Instrument : MSVOA_D
 ClientSampleId :

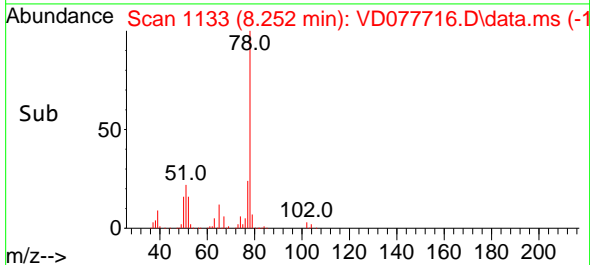
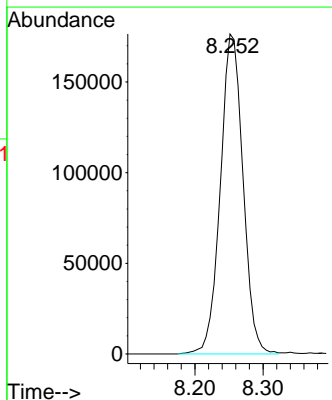
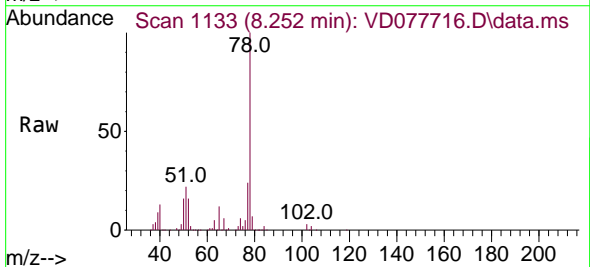


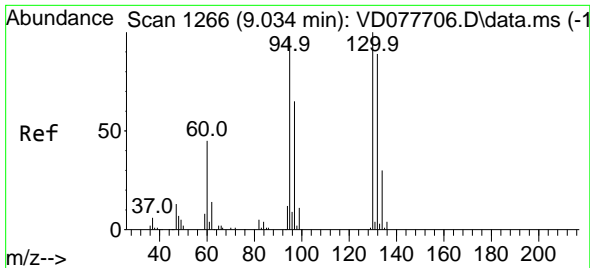
Tgt Ion:117 Resp: 136791
 Ion Ratio Lower Upper
 117 100
 119 97.1 76.3 114.5



#33
 Benzene
 Concen: 23.330 ug/L
 RT: 8.252 min Scan# 1133
 Delta R.T. 0.000 min
 Lab File: VD077716.D
 Acq: 30 Nov 2023 19:35

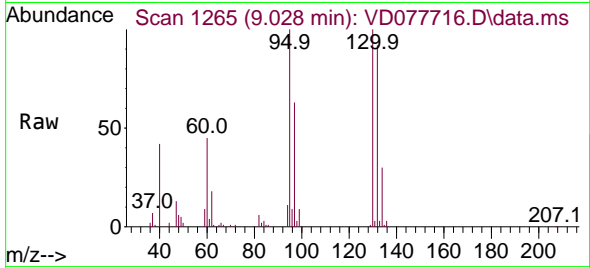
Tgt Ion: 78 Resp: 408080





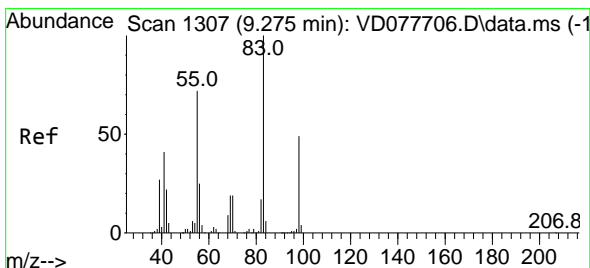
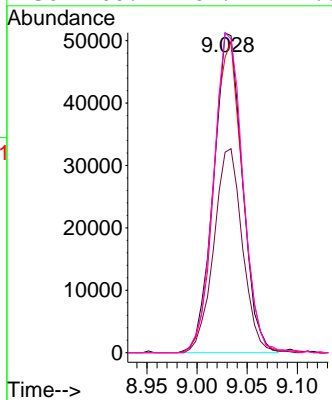
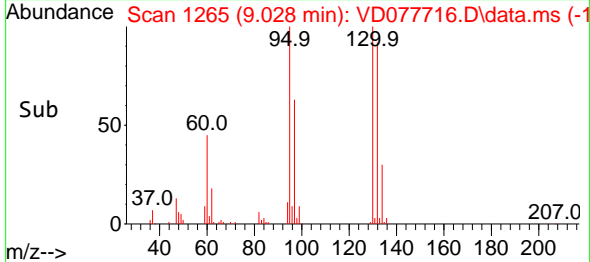
#34
 Trichloroethene
 Concen: 23.540 ug/L
 RT: 9.028 min Scan# 11
 Delta R.T. -0.006 min
 Lab File: VD077716.D
 Acq: 30 Nov 2023 19:35

Instrument :
 MSVOA_D
 ClientSampleId :

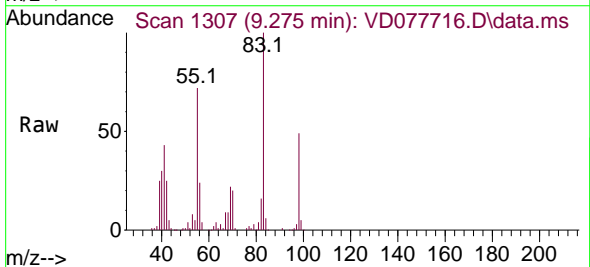


Tgt Ion: 95 Resp: 102210

Ion	Ratio	Lower	Upper
95	100		
97	62.7	44.2	82.0
132	92.4	67.5	125.3
130	100.1	69.4	129.0

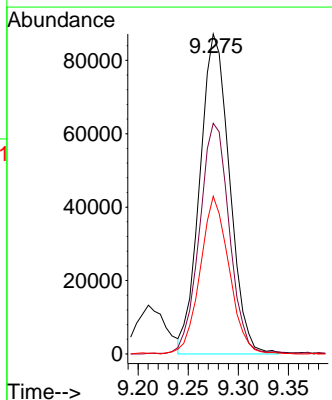
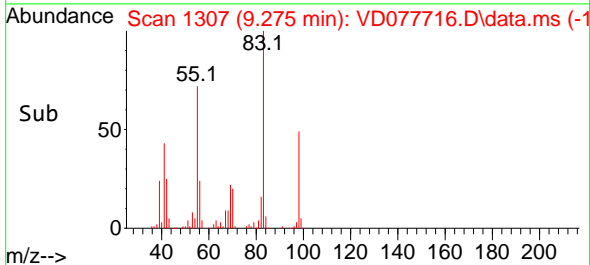


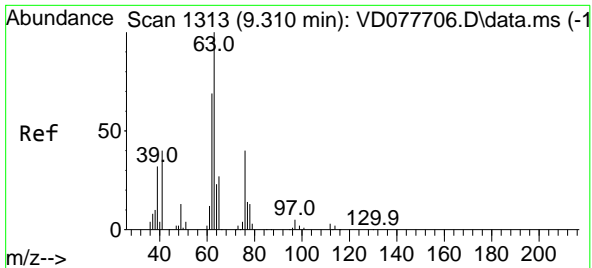
#35
 Methylcyclohexane
 Concen: 23.331 ug/L
 RT: 9.275 min Scan# 1307
 Delta R.T. 0.000 min
 Lab File: VD077716.D
 Acq: 30 Nov 2023 19:35



Tgt Ion: 83 Resp: 179846

Ion	Ratio	Lower	Upper
83	100		
55	72.3	59.8	89.6
98	47.8	38.5	57.7

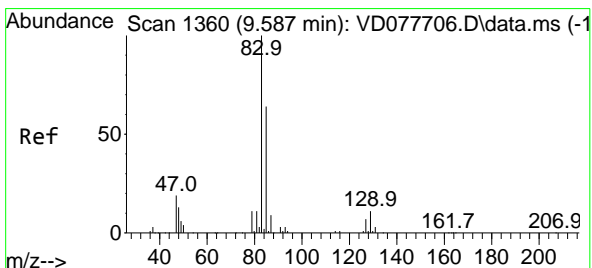
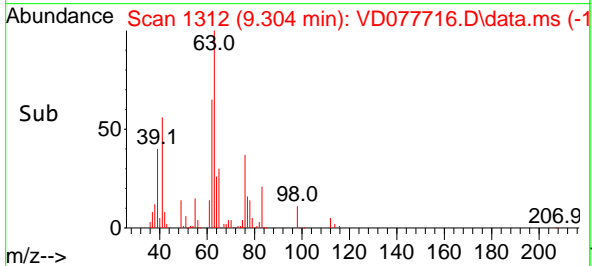
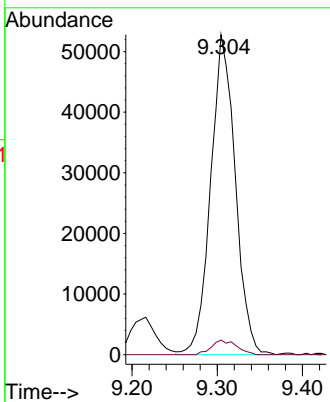
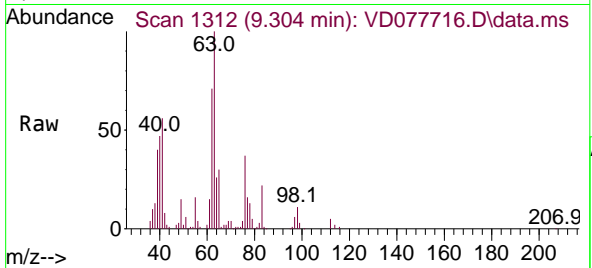




#37
 1,2-Dichloropropane
 Concen: 23.223 ug/L
 RT: 9.304 min Scan# 111
 Delta R.T. -0.006 min
 Lab File: VD077716.D
 Acq: 30 Nov 2023 19:35

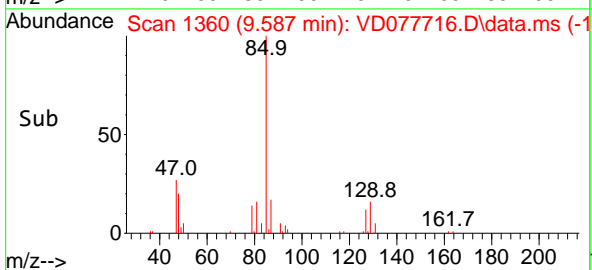
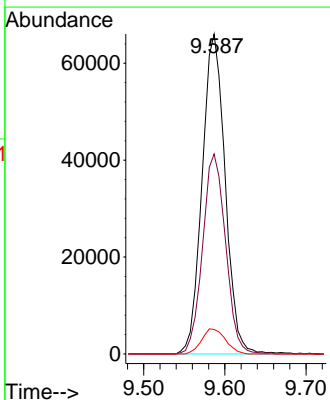
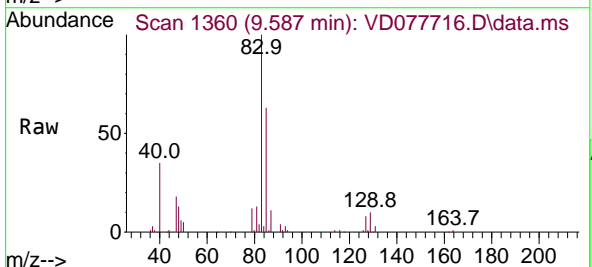
Instrument : MSVOA_D
 ClientSampleId :

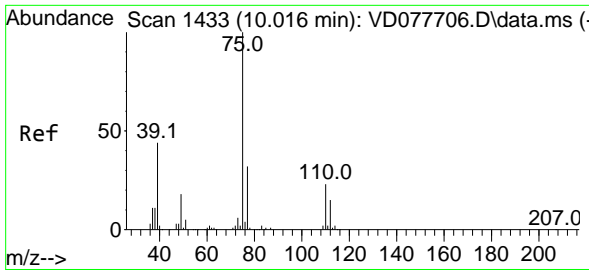
Tgt Ion: 63 Resp: 105909
 Ion Ratio Lower Upper
 63 100
 112 4.6 3.5 5.3



#38
 Bromodichloromethane
 Concen: 23.431 ug/L
 RT: 9.587 min Scan# 1360
 Delta R.T. 0.000 min
 Lab File: VD077716.D
 Acq: 30 Nov 2023 19:35

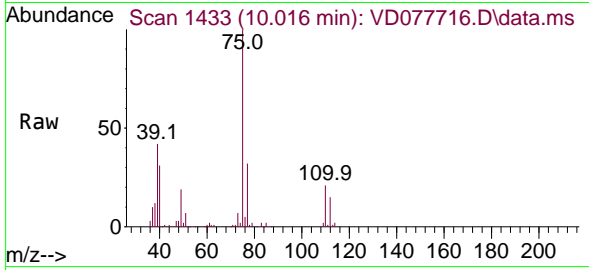
Tgt Ion: 83 Resp: 129946
 Ion Ratio Lower Upper
 83 100
 85 62.5 45.5 84.5
 127 7.7 7.4 11.2



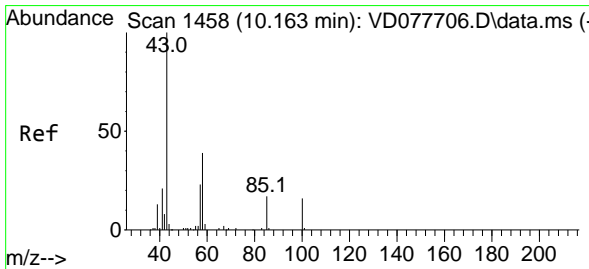
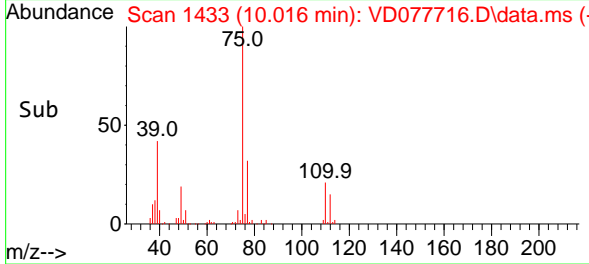
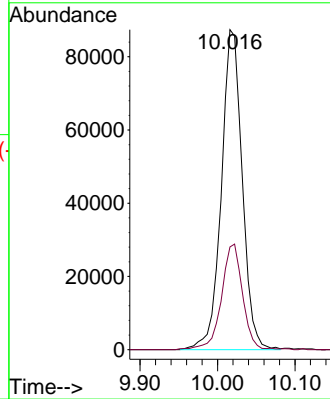


#39
 cis-1,3-Dichloropropene
 Concen: 23.028 ug/L
 RT: 10.016 min Scan# 1433
 Delta R.T. 0.000 min
 Lab File: VD077716.D
 Acq: 30 Nov 2023 19:35

Instrument : MSVOA_D
 ClientSampleId :

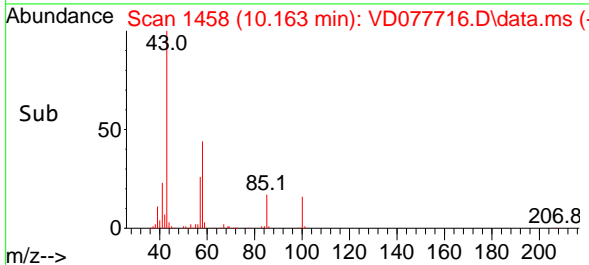
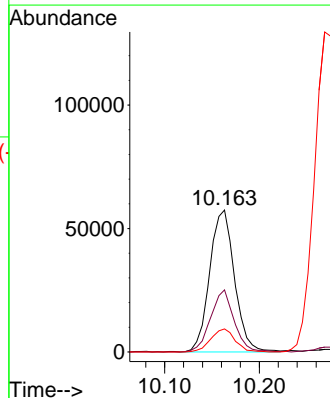
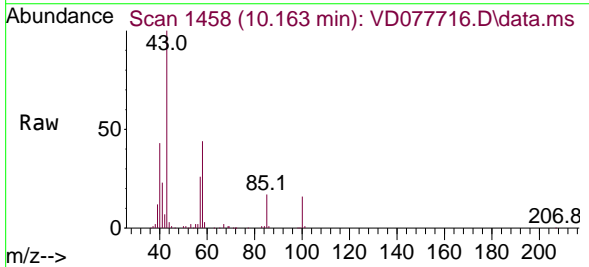


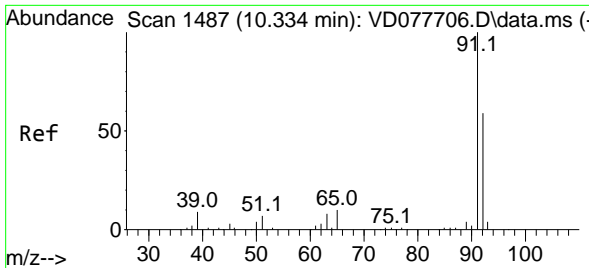
Tgt Ion: 75 Resp: 164004
 Ion Ratio Lower Upper
 75 100
 77 32.1 21.2 39.4



#40
 4-Methyl-2-pentanone
 Concen: 41.741 ug/L
 RT: 10.163 min Scan# 1458
 Delta R.T. 0.000 min
 Lab File: VD077716.D
 Acq: 30 Nov 2023 19:35

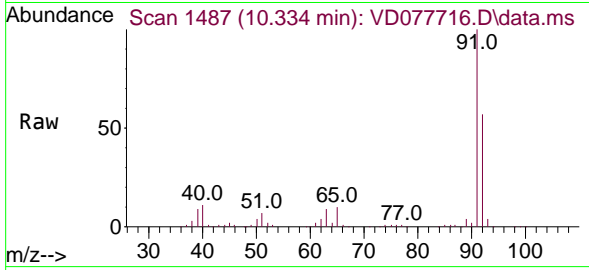
Tgt Ion: 43 Resp: 105047
 Ion Ratio Lower Upper
 43 100
 58 41.4 31.0 46.4
 100 15.9 11.9 17.9



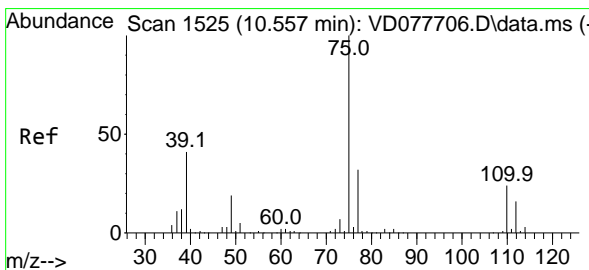
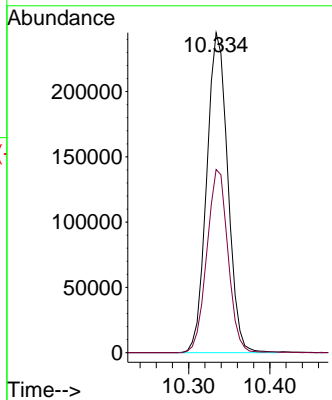
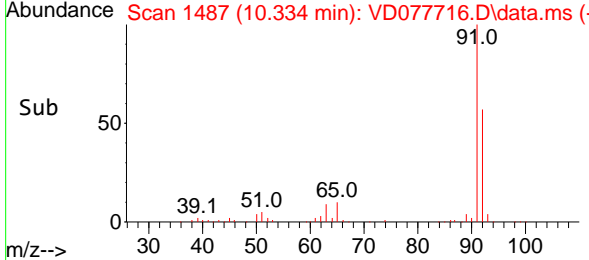


#42
 Toluene
 Concen: 23.793 ug/L
 RT: 10.334 min Scan# 1487
 Delta R.T. 0.000 min
 Lab File: VD077716.D
 Acq: 30 Nov 2023 19:35

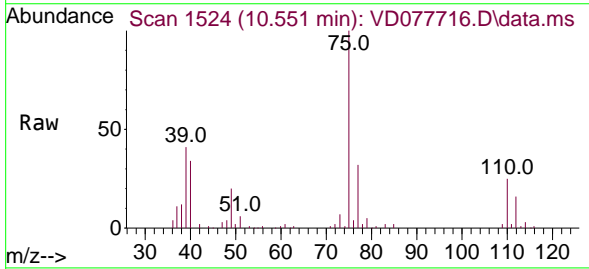
Instrument : MSVOA_D
 ClientSampleId :



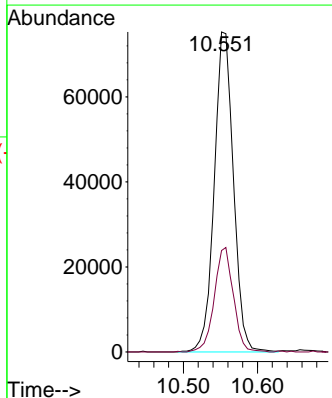
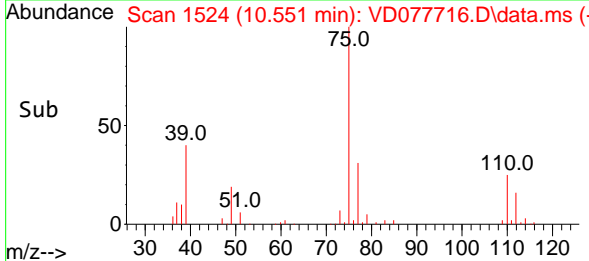
Tgt Ion: 91 Resp: 442038
 Ion Ratio Lower Upper
 91 100
 92 57.3 41.6 77.3

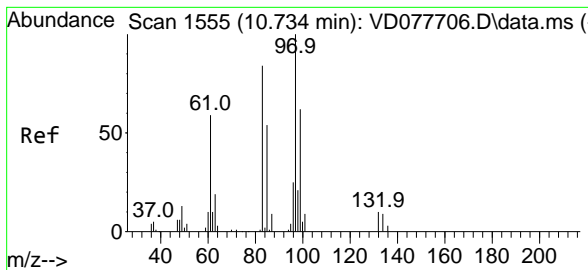


#44
 trans-1,3-Dichloropropene
 Concen: 22.768 ug/L
 RT: 10.551 min Scan# 1524
 Delta R.T. -0.006 min
 Lab File: VD077716.D
 Acq: 30 Nov 2023 19:35



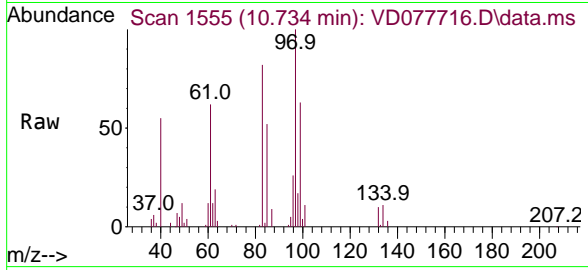
Tgt Ion: 75 Resp: 135439
 Ion Ratio Lower Upper
 75 100
 77 31.7 22.0 40.8





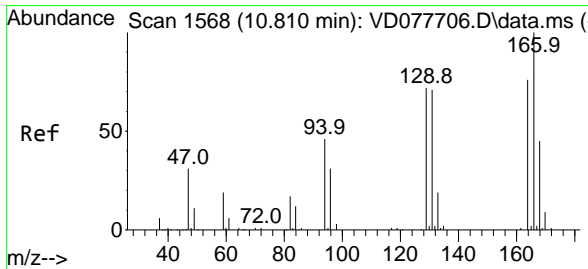
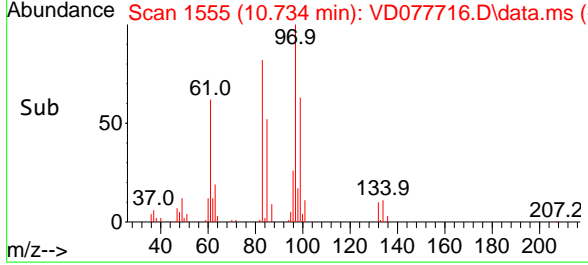
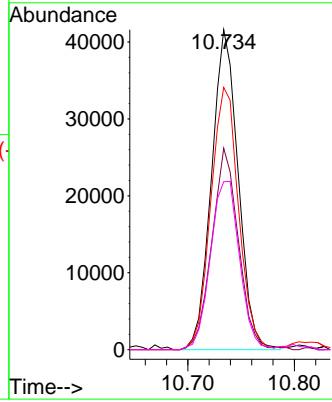
#45
 1,1,2-Trichloroethane
 Concen: 23.566 ug/L
 RT: 10.734 min Scan# 1555
 Delta R.T. 0.000 min
 Lab File: VD077716.D
 Acq: 30 Nov 2023 19:35

Instrument : MSVOA_D
 ClientSampleId :

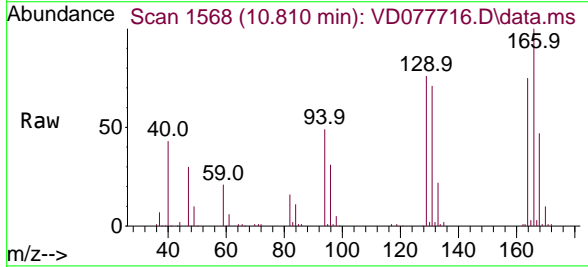


Tgt Ion: 97 Resp: 72179

Ion	Ratio	Lower	Upper
97	100		
99	63.0	41.7	77.5
83	82.0	63.6	118.2
85	52.5	37.2	69.2

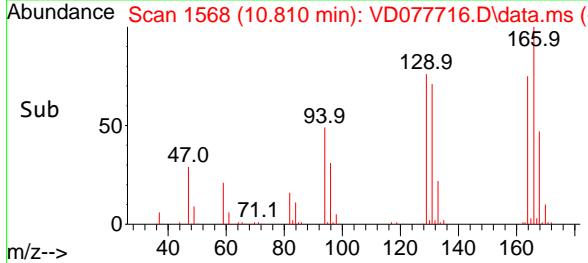
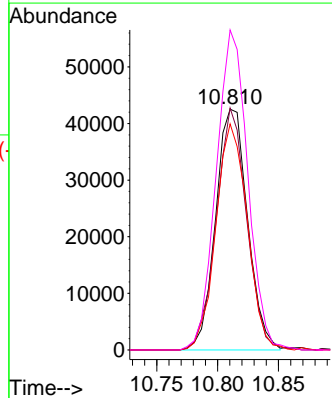


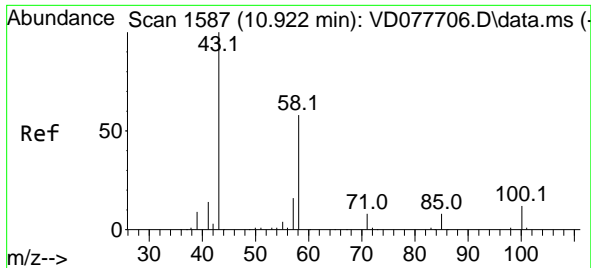
#46
 Tetrachloroethene
 Concen: 22.210 ug/L
 RT: 10.810 min Scan# 1568
 Delta R.T. 0.000 min
 Lab File: VD077716.D
 Acq: 30 Nov 2023 19:35



Tgt Ion: 164 Resp: 77763

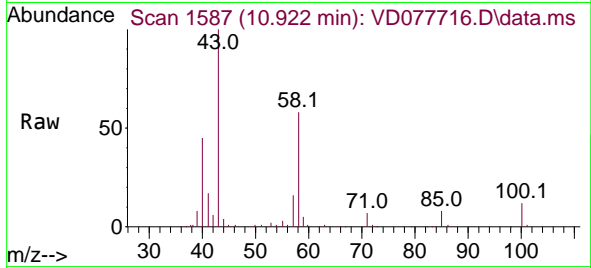
Ion	Ratio	Lower	Upper
164	100		
129	100.5	61.5	114.3
131	93.9	59.1	109.9
166	132.9	85.4	158.6



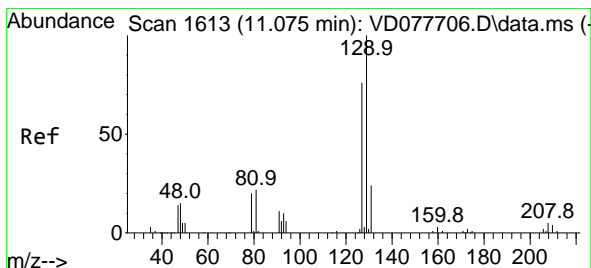
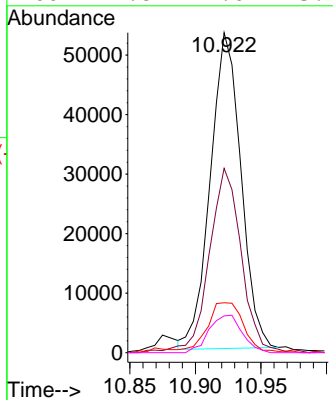
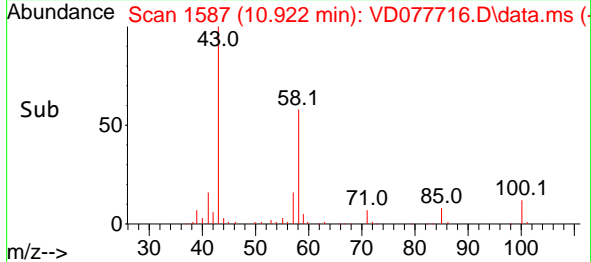


#48
 2-Hexanone
 Concen: 40.339 ug/L
 RT: 10.922 min Scan# 1587
 Delta R.T. 0.000 min
 Lab File: VD077716.D
 Acq: 30 Nov 2023 19:35

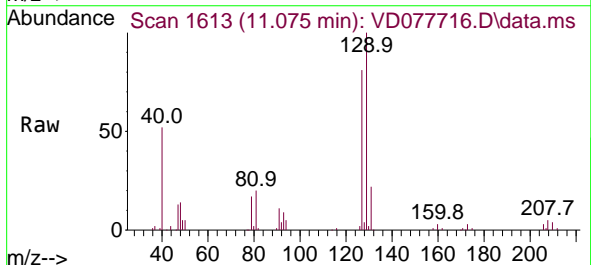
Instrument : MSVOA_D
 ClientSampleId :



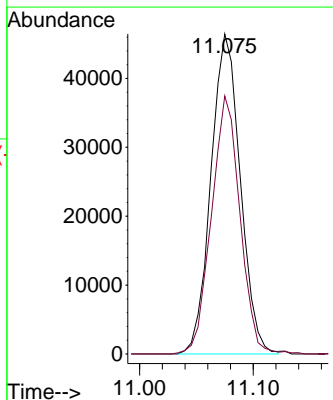
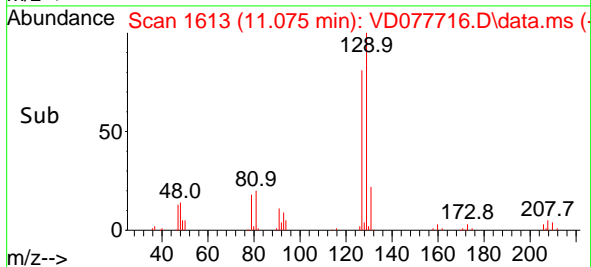
Tgt Ion: 43 Resp: 86288
 Ion Ratio Lower Upper
 43 100
 58 60.4 43.0 64.6
 57 18.7 13.8 20.8
 100 12.8 9.0 13.4

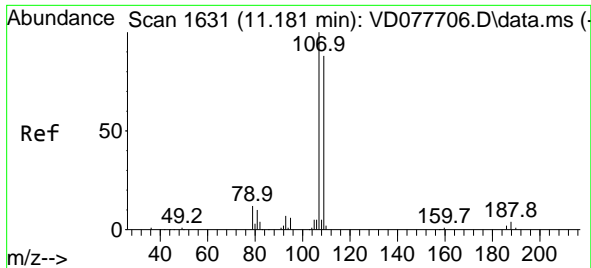


#49
 Dibromochloromethane
 Concen: 22.878 ug/L
 RT: 11.075 min Scan# 1613
 Delta R.T. 0.000 min
 Lab File: VD077716.D
 Acq: 30 Nov 2023 19:35



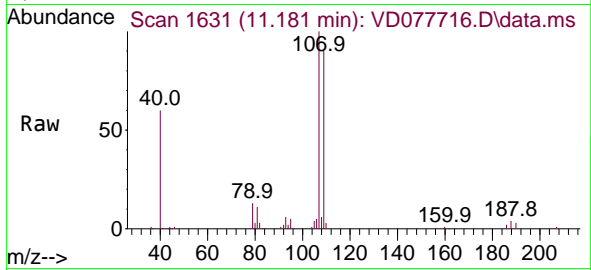
Tgt Ion: 129 Resp: 83322
 Ion Ratio Lower Upper
 129 100
 127 80.7 52.8 98.2



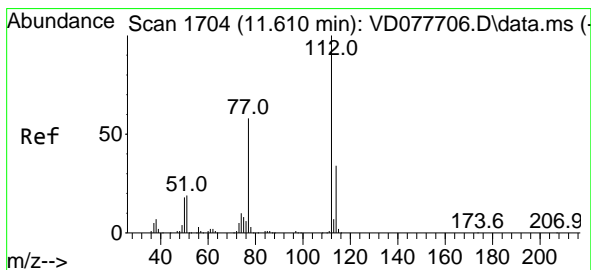
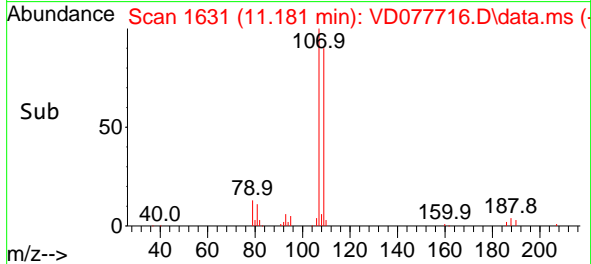
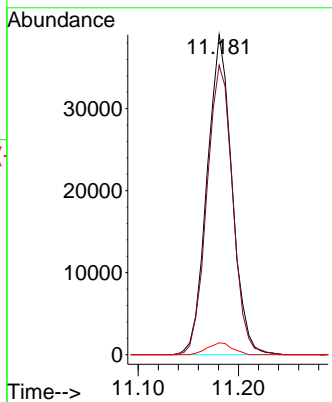


#50
 1,2-Dibromoethane
 Concen: 22.777 ug/L
 RT: 11.181 min Scan# 10
 Delta R.T. 0.000 min
 Lab File: VD077716.D
 Acq: 30 Nov 2023 19:35

Instrument : MSVOA_D
 ClientSampleId :

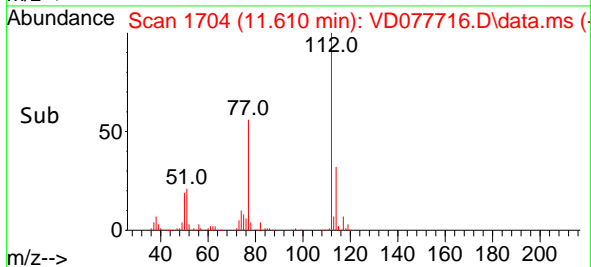
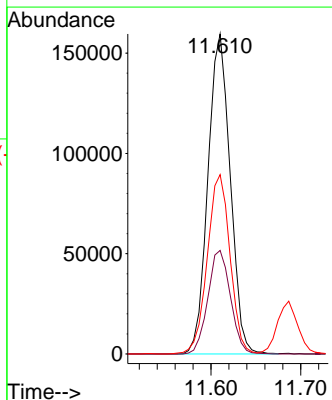
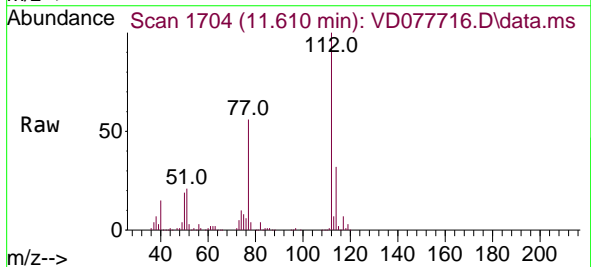


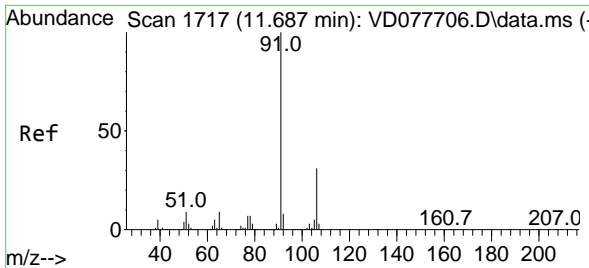
Tgt Ion:107 Resp: 67279
 Ion Ratio Lower Upper
 107 100
 109 90.5 64.2 119.2
 188 3.7 2.3 3.5#



#51
 Chlorobenzene
 Concen: 23.882 ug/L
 RT: 11.610 min Scan# 1704
 Delta R.T. 0.000 min
 Lab File: VD077716.D
 Acq: 30 Nov 2023 19:35

Tgt Ion:112 Resp: 275127
 Ion Ratio Lower Upper
 112 100
 114 32.3 22.5 41.9
 77 56.0 46.4 69.6

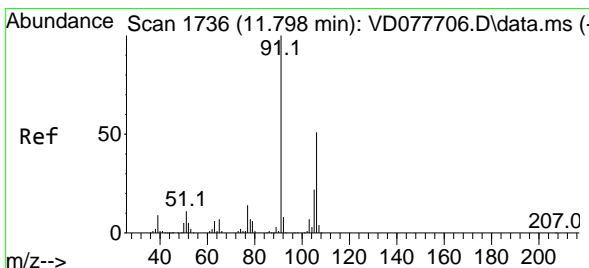
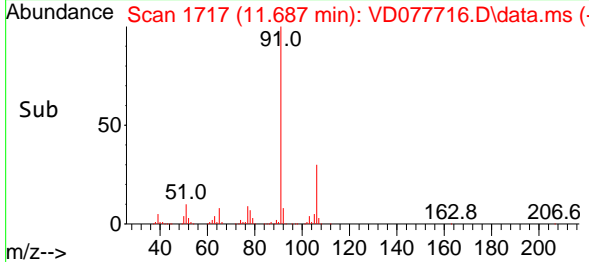
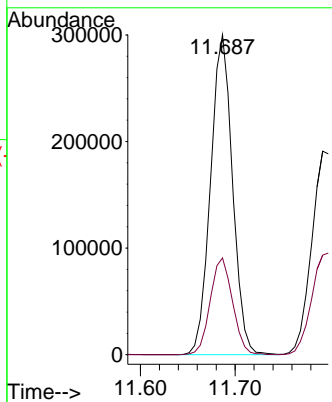
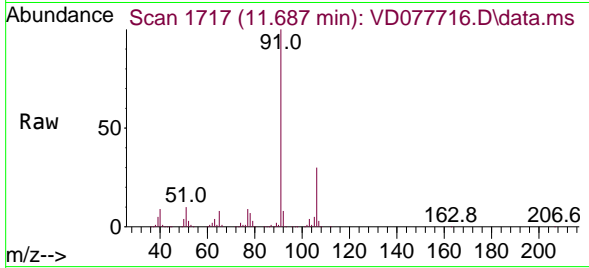




#52
 Ethylbenzene
 Concen: 23.492 ug/L
 RT: 11.687 min Scan# 1717
 Delta R.T. 0.000 min
 Lab File: VD077716.D
 Acq: 30 Nov 2023 19:35

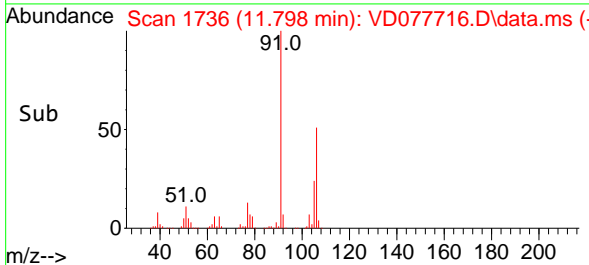
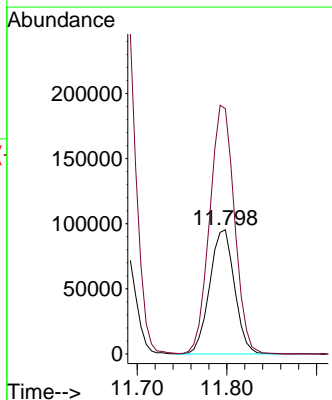
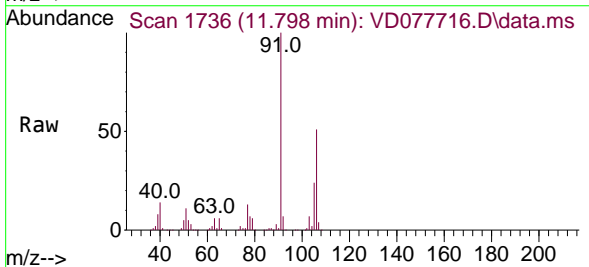
Instrument : MSVOA_D
 ClientSampleId :

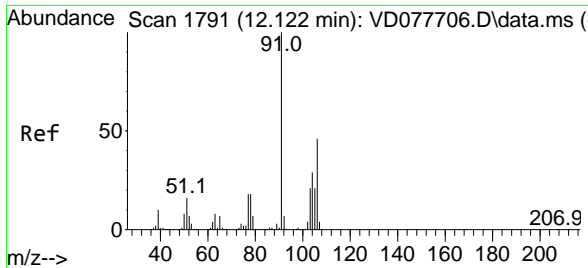
Tgt Ion: 91 Resp: 483830
 Ion Ratio Lower Upper
 91 100
 106 30.3 22.4 41.6



#53
 m,p-Xylene
 Concen: 23.540 ug/L
 RT: 11.798 min Scan# 1736
 Delta R.T. 0.000 min
 Lab File: VD077716.D
 Acq: 30 Nov 2023 19:35

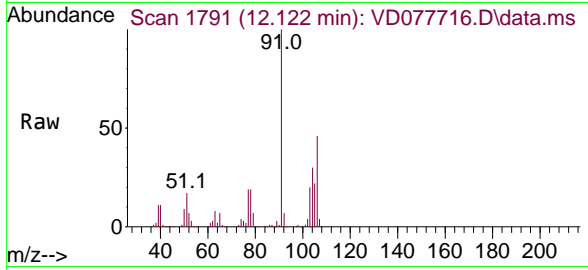
Tgt Ion: 106 Resp: 183195
 Ion Ratio Lower Upper
 106 100
 91 197.7 140.8 261.6



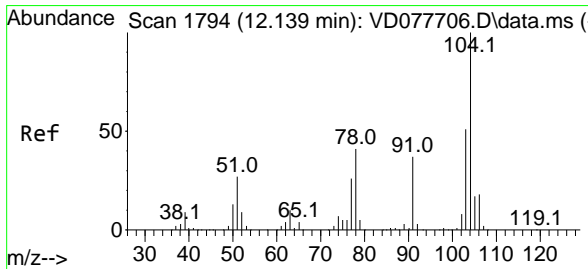
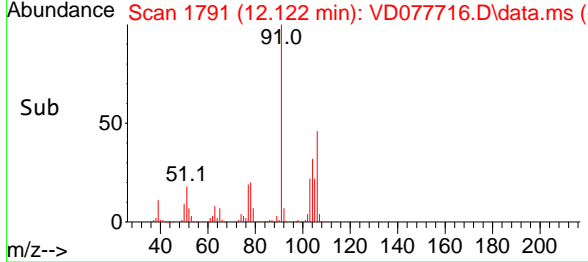
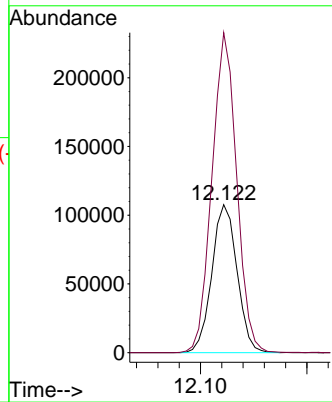


#54
 o-Xylene
 Concen: 23.744 ug/L
 RT: 12.122 min Scan# 1791
 Delta R.T. 0.000 min
 Lab File: VD077716.D
 Acq: 30 Nov 2023 19:35

Instrument : MSVOA_D
 ClientSampleId :

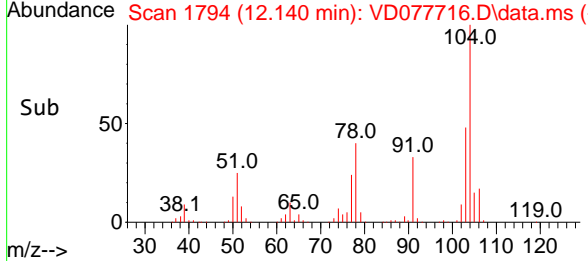
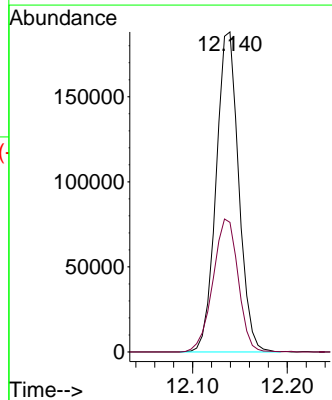
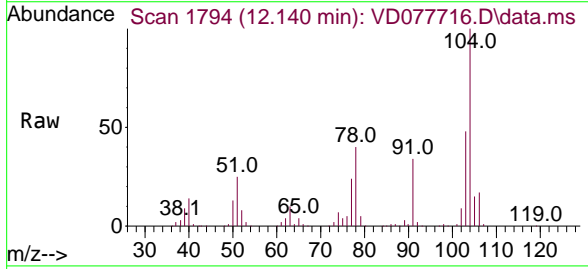


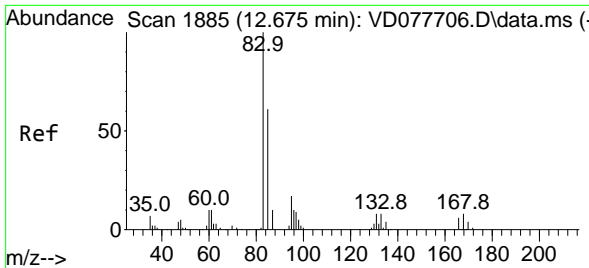
Tgt Ion:106 Resp: 176837
 Ion Ratio Lower Upper
 106 100
 91 216.2 152.2 282.7



#55
 Styrene
 Concen: 23.906 ug/L
 RT: 12.140 min Scan# 1794
 Delta R.T. 0.000 min
 Lab File: VD077716.D
 Acq: 30 Nov 2023 19:35

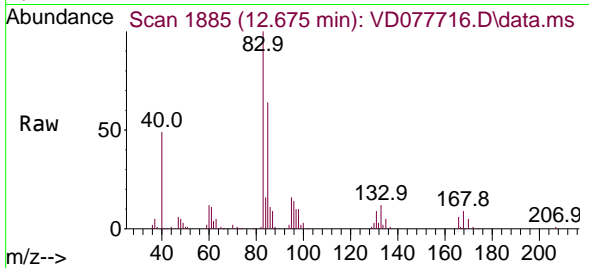
Tgt Ion:104 Resp: 311547
 Ion Ratio Lower Upper
 104 100
 78 40.5 30.9 57.5



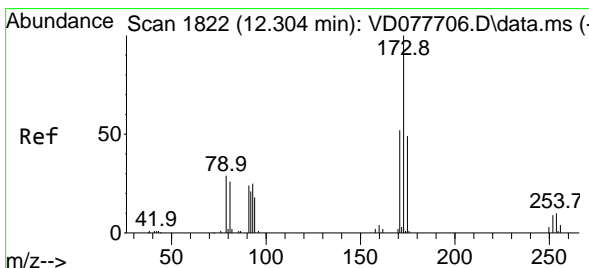
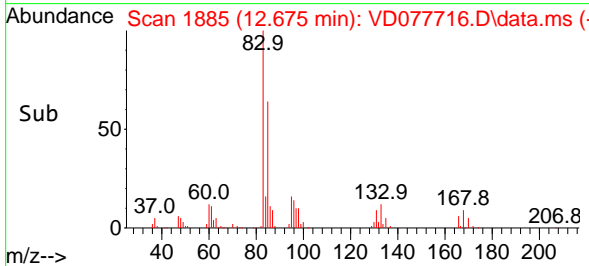
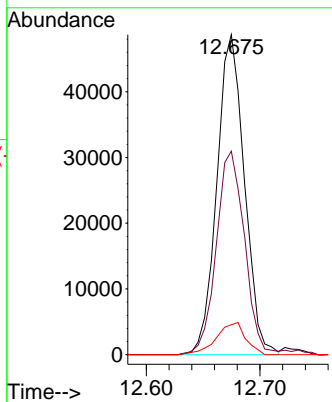


#57
 1,1,2,2-Tetrachloroethane
 Concen: 22.615 ug/L
 RT: 12.675 min Scan# 1885
 Delta R.T. 0.000 min
 Lab File: VD077716.D
 Acq: 30 Nov 2023 19:35

Instrument : MSVOA_D
 ClientSampleId :

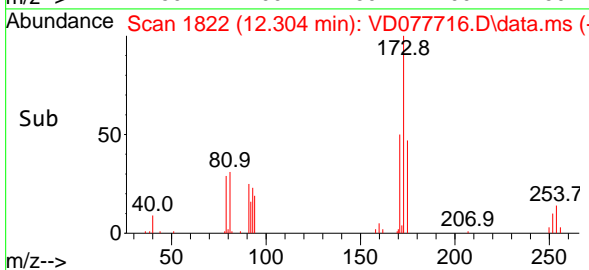
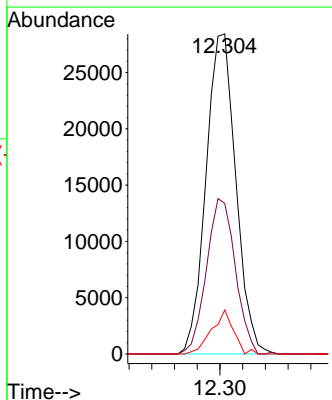
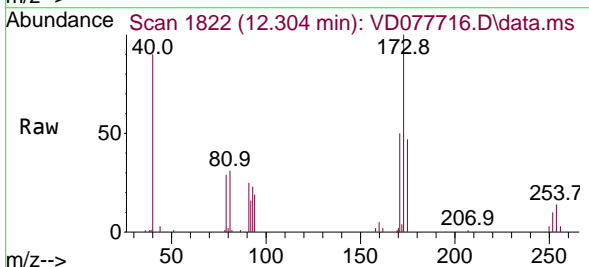


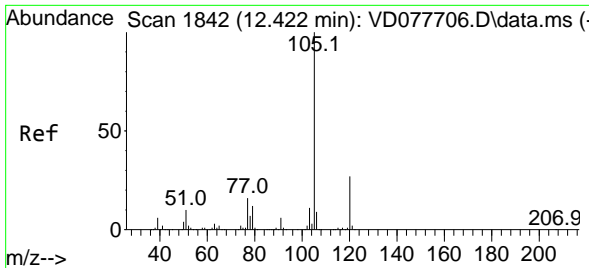
Tgt Ion: 83 Resp: 82075
 Ion Ratio Lower Upper
 83 100
 85 63.6 43.3 80.5
 131 9.4 7.3 10.9



#59
 Bromoform
 Concen: 22.679 ug/L
 RT: 12.304 min Scan# 1822
 Delta R.T. 0.000 min
 Lab File: VD077716.D
 Acq: 30 Nov 2023 19:35

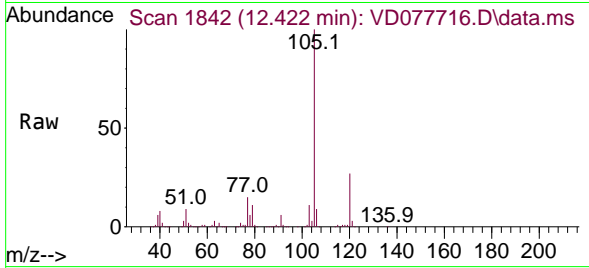
Tgt Ion: 173 Resp: 51850
 Ion Ratio Lower Upper
 173 100
 175 46.9 38.7 58.1
 254 9.8 1.8 2.8#





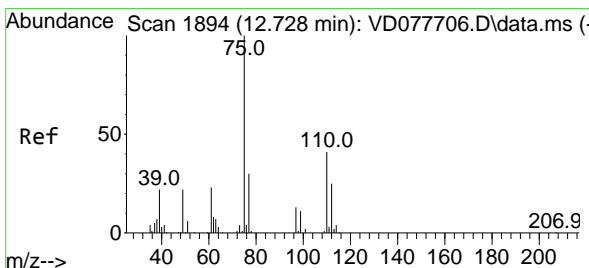
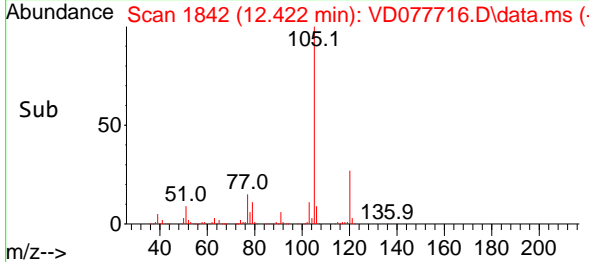
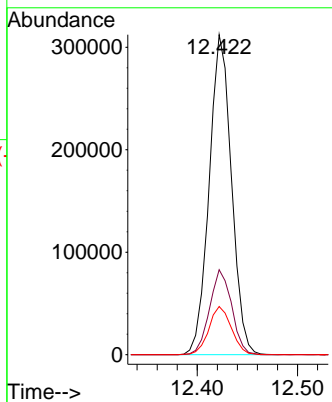
#60
 Isopropylbenzene
 Concen: 23.380 ug/L
 RT: 12.422 min Scan# 1842
 Delta R.T. 0.000 min
 Lab File: VD077716.D
 Acq: 30 Nov 2023 19:35

Instrument : MSVOA_D
 ClientSampleId :



Tgt Ion: 105 Resp: 482194

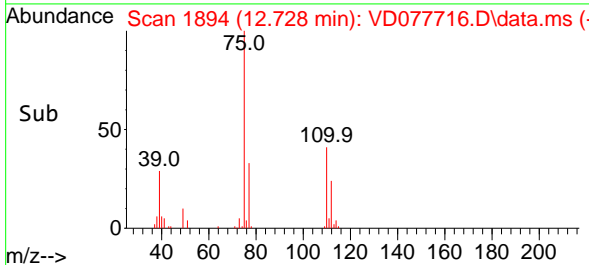
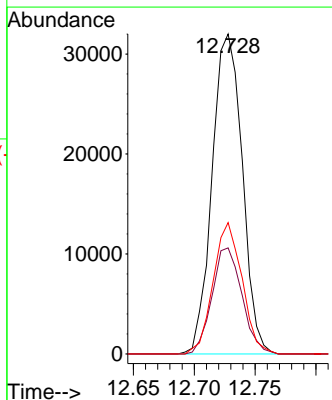
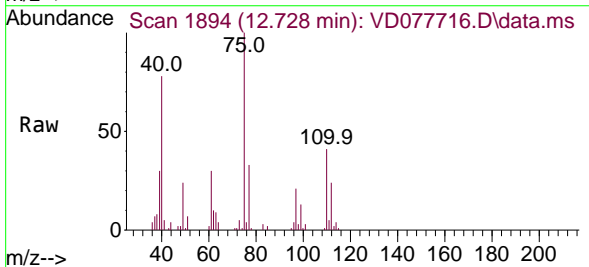
Ion	Ratio	Lower	Upper
105	100		
120	26.3	21.3	31.9
77	15.2	12.6	18.8

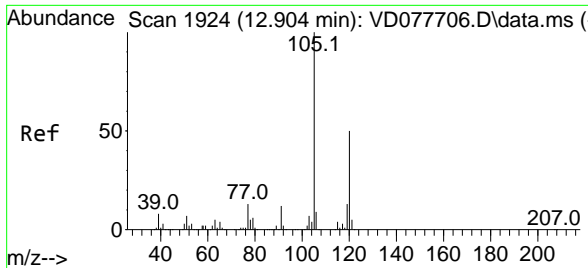


#61
 1,2,3-Trichloropropane
 Concen: 21.703 ug/L
 RT: 12.728 min Scan# 1894
 Delta R.T. 0.000 min
 Lab File: VD077716.D
 Acq: 30 Nov 2023 19:35

Tgt Ion: 75 Resp: 55161

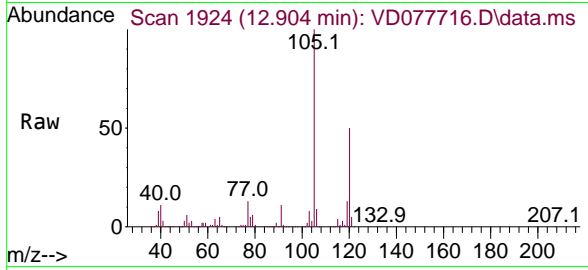
Ion	Ratio	Lower	Upper
75	100		
77	32.9	26.8	40.2
110	39.3	33.4	50.2



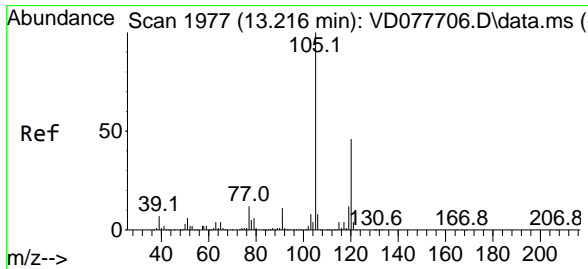
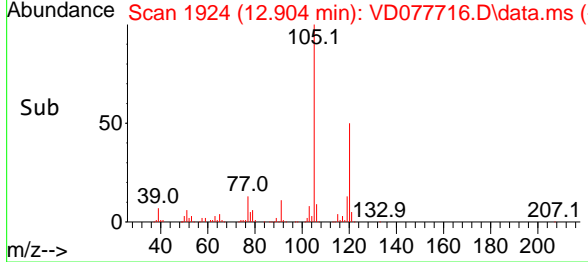
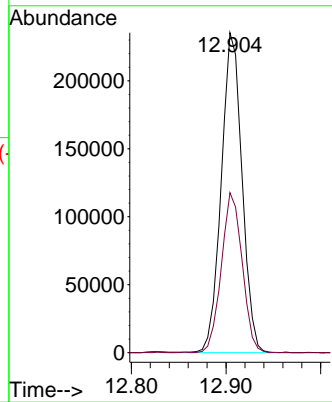


#62
 1,3,5-Trimethylbenzene
 Concen: 23.157 ug/L
 RT: 12.904 min Scan# 1924
 Delta R.T. 0.000 min
 Lab File: VD077716.D
 Acq: 30 Nov 2023 19:35

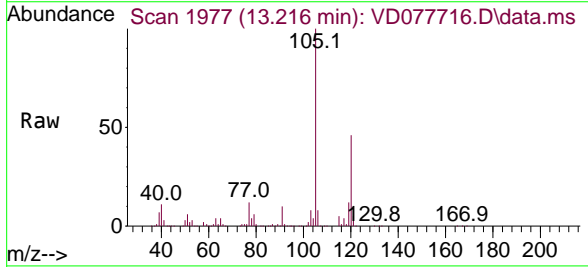
Instrument : MSVOA_D
 ClientSampleId :



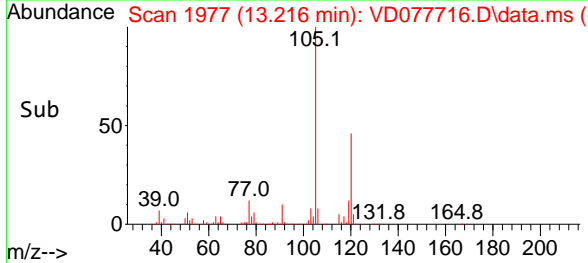
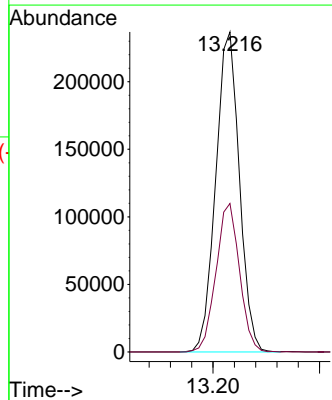
Tgt Ion:105 Resp: 358708
 Ion Ratio Lower Upper
 105 100
 120 50.1 39.5 59.3

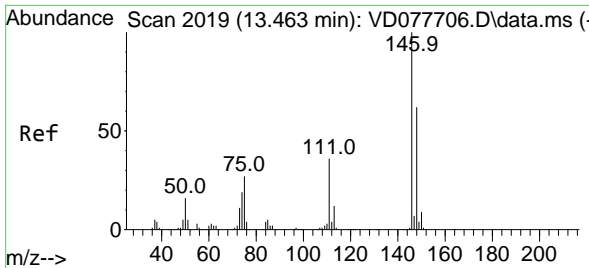


#63
 1,2,4-Trimethylbenzene
 Concen: 23.195 ug/L
 RT: 13.216 min Scan# 1977
 Delta R.T. 0.000 min
 Lab File: VD077716.D
 Acq: 30 Nov 2023 19:35



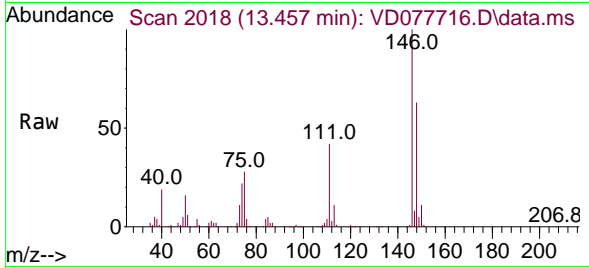
Tgt Ion:105 Resp: 364300
 Ion Ratio Lower Upper
 105 100
 120 46.2 37.1 55.7



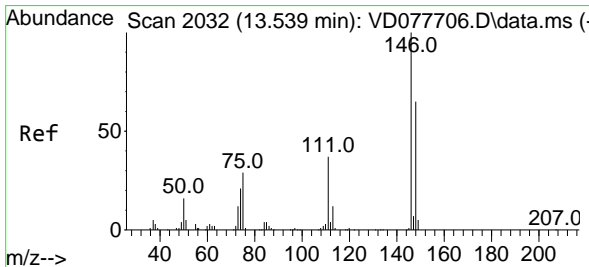
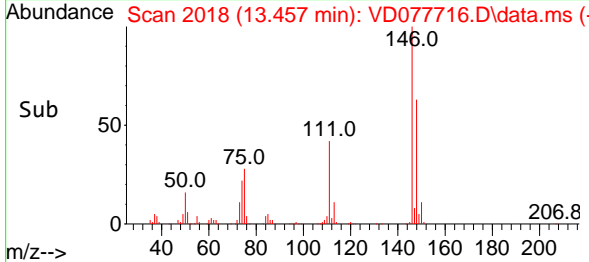
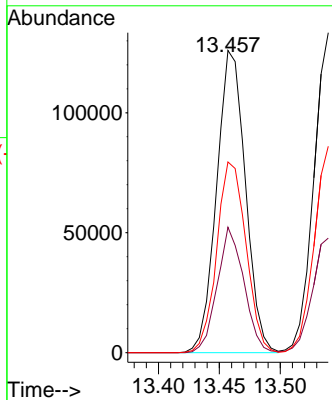


#64
 1,3-Dichlorobenzene
 Concen: 23.303 ug/L
 RT: 13.457 min Scan# 2019
 Delta R.T. -0.006 min
 Lab File: VD077716.D
 Acq: 30 Nov 2023 19:35

Instrument : MSVOA_D
 ClientSampleId :

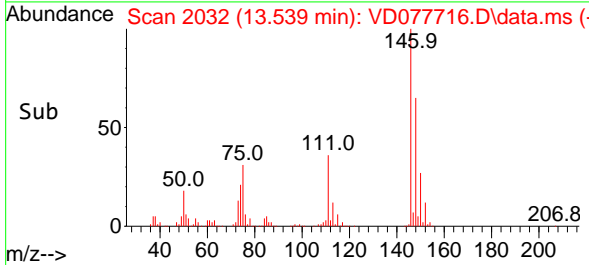
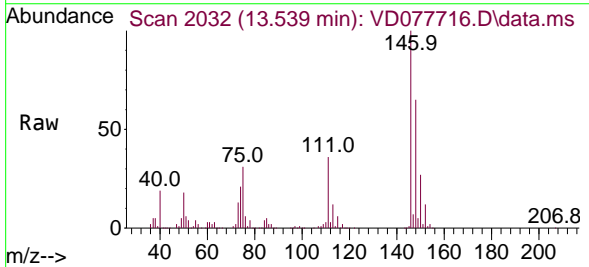
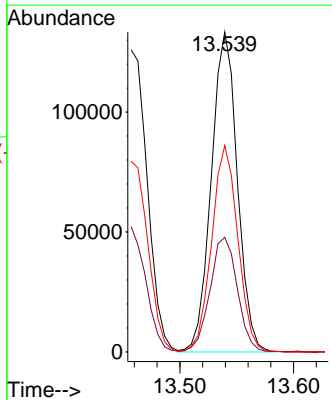


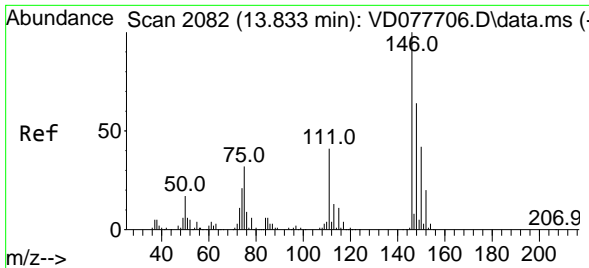
Tgt Ion:146 Resp: 207849
 Ion Ratio Lower Upper
 146 100
 111 41.5 26.6 49.4
 148 63.1 44.0 81.6



#65
 1,4-Dichlorobenzene
 Concen: 22.971 ug/L
 RT: 13.539 min Scan# 2032
 Delta R.T. 0.000 min
 Lab File: VD077716.D
 Acq: 30 Nov 2023 19:35

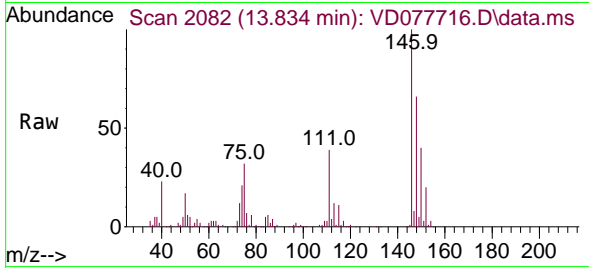
Tgt Ion:146 Resp: 212609
 Ion Ratio Lower Upper
 146 100
 111 35.8 26.4 49.0
 148 64.5 44.0 81.8



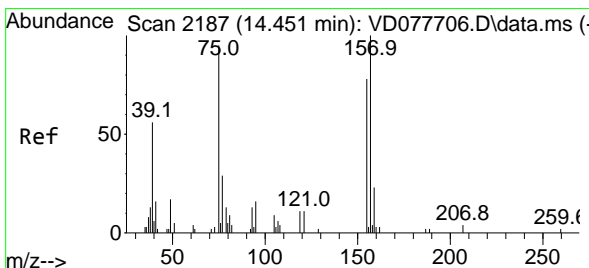
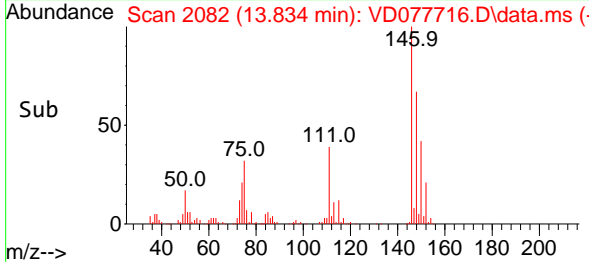
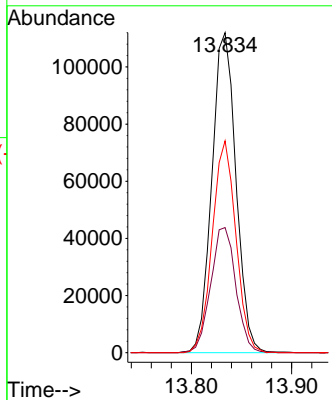


#67
 1,2-Dichlorobenzene
 Concen: 23.262 ug/L
 RT: 13.834 min Scan# 2082
 Delta R.T. 0.000 min
 Lab File: VD077716.D
 Acq: 30 Nov 2023 19:35

Instrument : MSVOA_D
 ClientSampleId :

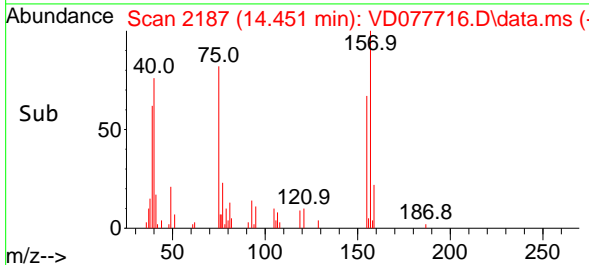
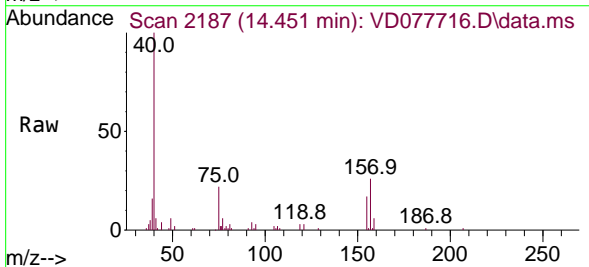
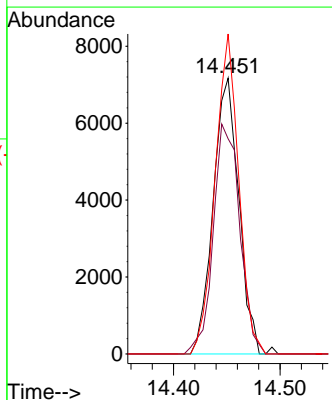


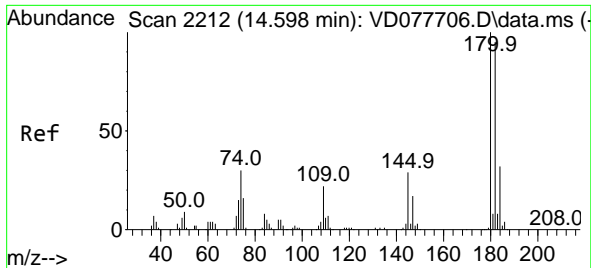
Tgt Ion:146 Resp: 186707
 Ion Ratio Lower Upper
 146 100
 111 39.1 31.4 47.2
 148 66.2 50.2 75.2



#68
 1,2-Dibromo-3-chloropropane
 Concen: 20.041 ug/L
 RT: 14.451 min Scan# 2187
 Delta R.T. 0.000 min
 Lab File: VD077716.D
 Acq: 30 Nov 2023 19:35

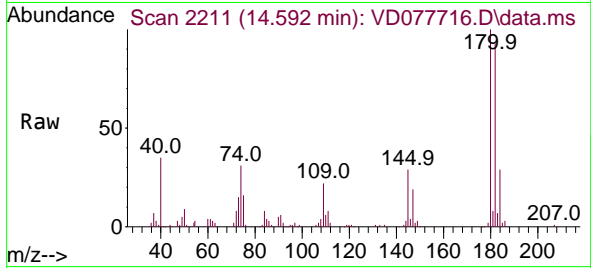
Tgt Ion: 75 Resp: 12011
 Ion Ratio Lower Upper
 75 100
 155 78.0 69.2 103.8
 157 116.0 86.6 130.0



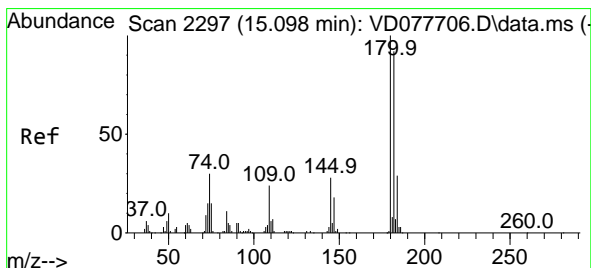
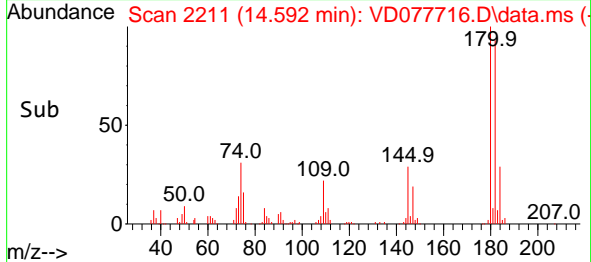
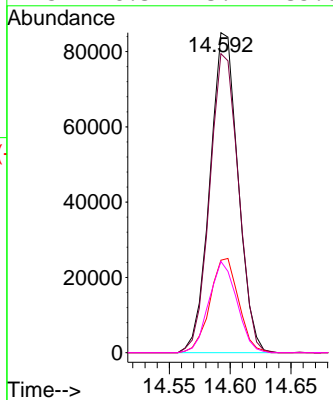


#69
 1,3,5-Trichlorobenzene
 Concen: 22.552 ug/L
 RT: 14.592 min Scan# 211
 Delta R.T. -0.006 min
 Lab File: VD077716.D
 Acq: 30 Nov 2023 19:35

Instrument :
 MSVOA_D
 ClientSampleId :

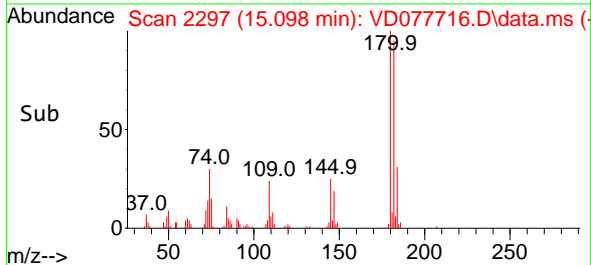
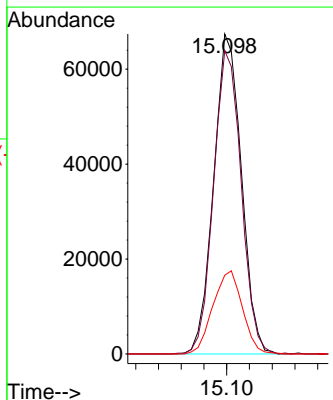
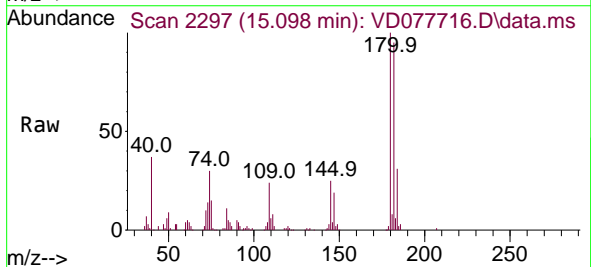


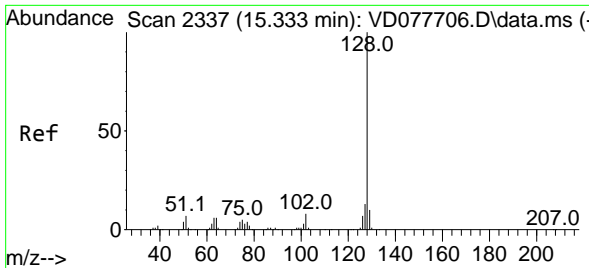
Tgt Ion:180 Resp: 136971
 Ion Ratio Lower Upper
 180 100
 182 95.0 77.0 115.4
 184 30.0 24.3 36.5
 145 28.3 23.4 35.0



#70
 1,2,4-trichlorobenzene
 Concen: 22.136 ug/L
 RT: 15.098 min Scan# 2297
 Delta R.T. 0.000 min
 Lab File: VD077716.D
 Acq: 30 Nov 2023 19:35

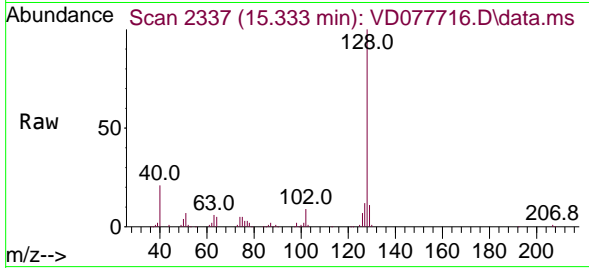
Tgt Ion:180 Resp: 114134
 Ion Ratio Lower Upper
 180 100
 182 94.6 77.0 115.6
 145 27.7 23.9 35.9



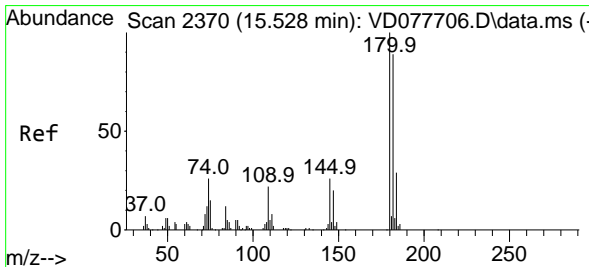
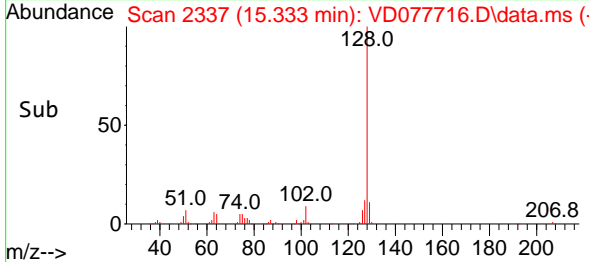
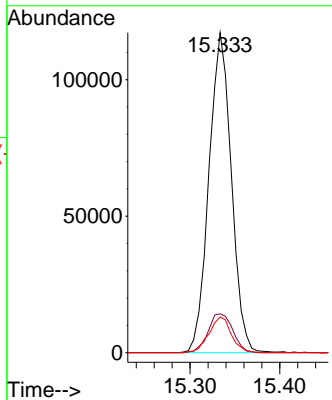


#71
 Naphthalene
 Concen: 21.600 ug/L
 RT: 15.333 min Scan# 21
 Delta R.T. 0.000 min
 Lab File: VD077716.D
 Acq: 30 Nov 2023 19:35

Instrument :
 MSVOA_D
 ClientSampleId :



Tgt Ion:128 Resp: 203608
 Ion Ratio Lower Upper
 128 100
 127 13.4 10.5 15.7
 129 11.2 8.7 13.1



#72
 1,2,3-Trichlorobenzene
 Concen: 22.359 ug/L
 RT: 15.522 min Scan# 2369
 Delta R.T. -0.006 min
 Lab File: VD077716.D
 Acq: 30 Nov 2023 19:35

Tgt Ion:180 Resp: 101063
 Ion Ratio Lower Upper
 180 100
 182 93.7 77.3 115.9
 145 29.9 25.2 37.8

