

Data Path : Z:\voasrv\HPCHEM1\MSVOA_D\Data\VD120221\
 Data File : VD071123.D
 Acq On : 02 Dec 2021 17:38
 Operator : VA/SY
 Sample : M4891-01RE
 Misc : 4.99G/5.00ml/MSVOA_D/SOIL
 ALS Vial : 1 Sample Multiplier: 1

Instrument :
 MSVOA_D
 ClientSampleId :
 MINEBROOK-1-COMPRE

Quant Time: Dec 03 00:40:35 2021
 Quant Method : Z:\voasrv\HPCHEM1\MSVOA_D\Method\82D112921S.M
 Quant Title : SW846 8260
 QLast Update : Mon Nov 29 17:54:09 2021
 Response via : Initial Calibration

Compound	R.T.	QIon	Response	Conc	Units	Dev(Min)
Internal Standards						
1) Pentafluorobenzene	7.967	168	37178	50.000	ug/l	-0.02
34) 1,4-Difluorobenzene	8.861	114	66783	50.000	ug/l	0.00
63) Chlorobenzene-d5	11.638	117	80010	50.000	ug/l	0.00
72) 1,4-Dichlorobenzene-d4	13.567	152	40114	50.000	ug/l	0.00
System Monitoring Compounds						
33) 1,2-Dichloroethane-d4	8.332	65	35340	81.010	ug/l	0.00
Spiked Amount	50.000	Range	50 - 163	Recovery	=	162.020%
35) Dibromofluoromethane	7.914	113	26427	62.142	ug/l	0.00
Spiked Amount	50.000	Range	54 - 147	Recovery	=	124.280%
50) Toluene-d8	10.332	98	85007	52.527	ug/l	0.00
Spiked Amount	50.000	Range	49 - 140	Recovery	=	105.060%
62) 4-Bromofluorobenzene	12.626	95	38971	69.469	ug/l	0.00
Spiked Amount	50.000	Range	25 - 144	Recovery	=	138.940%

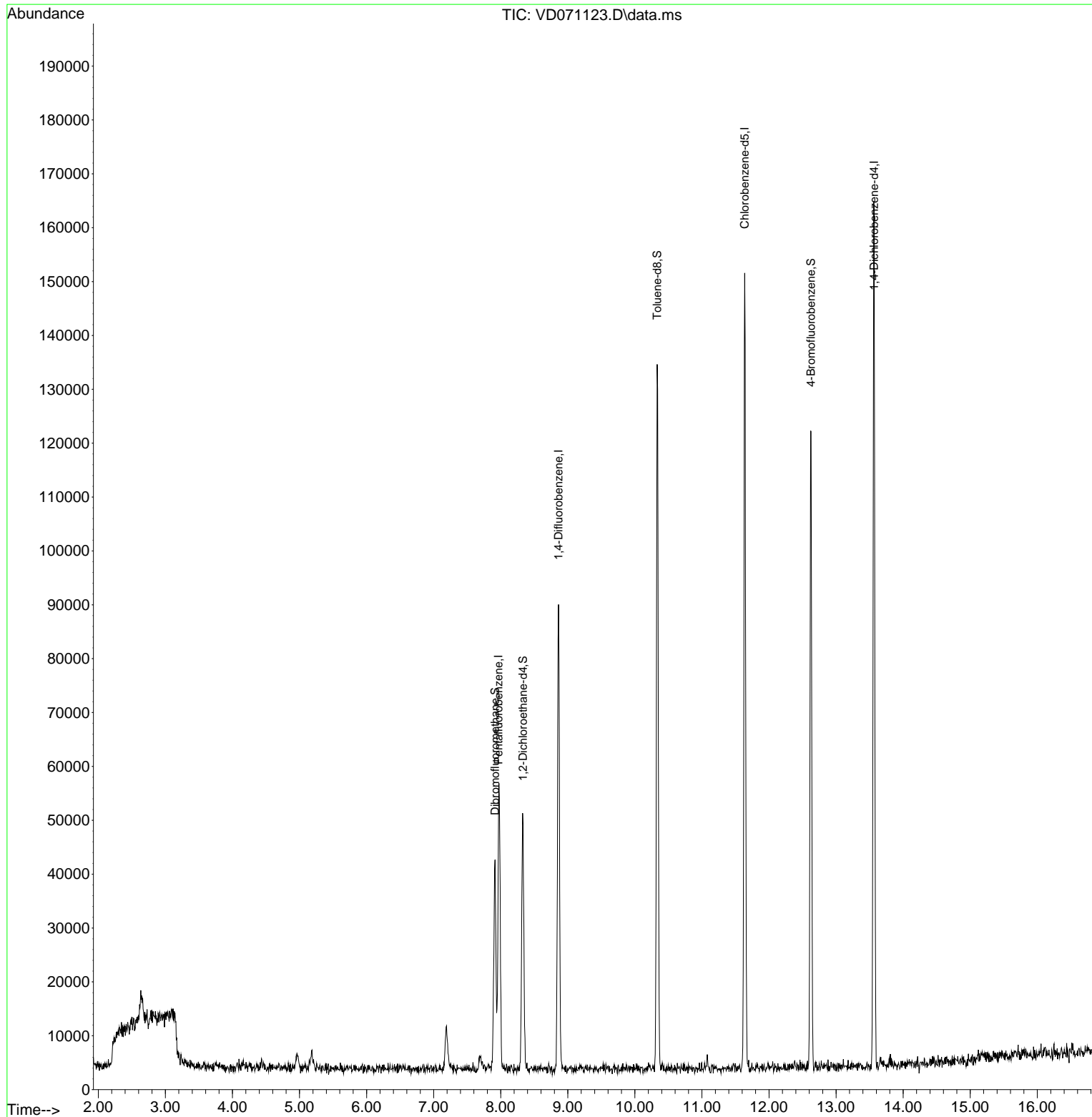
Target Compounds Qvalue

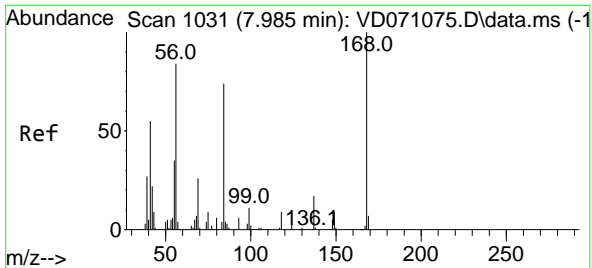
(#) = qualifier out of range (m) = manual integration (+) = signals summed

Data Path : Z:\voasrv\HPCHEM1\MSVOA_D\Data\VD120221\
 Data File : VD071123.D
 Acq On : 02 Dec 2021 17:38
 Operator : VA/SY
 Sample : M4891-01RE
 Misc : 4.99G/5.00ml/MSVOA_D/SOIL
 ALS Vial : 1 Sample Multiplier: 1

Instrument :
 MSVOA_D
 ClientSampleId :
 MINEBROOK-1-COMP

Quant Time: Dec 03 00:40:35 2021
 Quant Method : Z:\voasrv\HPCHEM1\MSVOA_D\Method\82D112921S.M
 Quant Title : SW846 8260
 QLast Update : Mon Nov 29 17:54:09 2021
 Response via : Initial Calibration

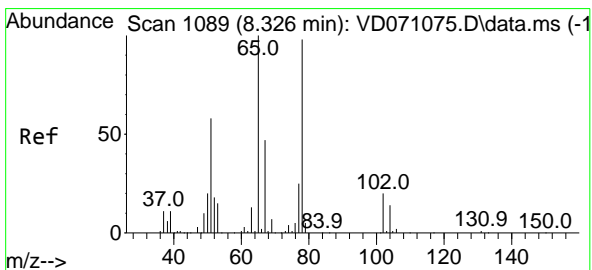
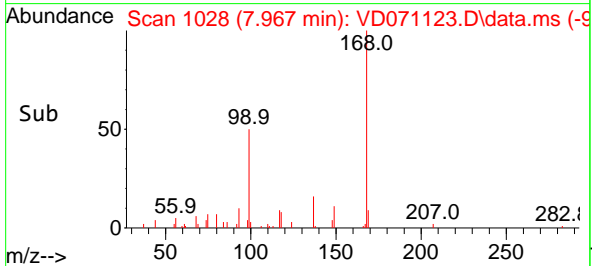
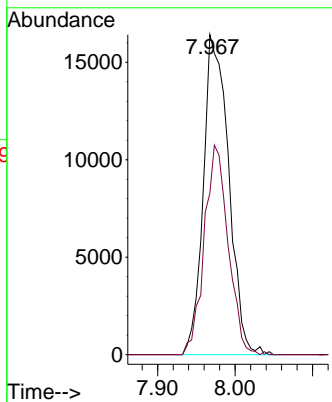
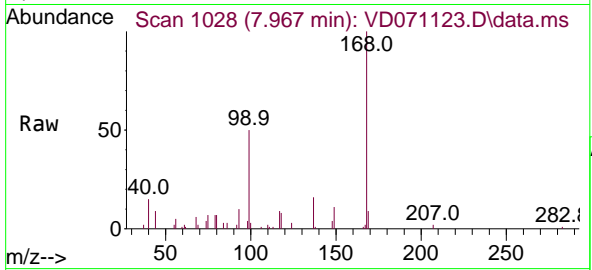




#1
 Pentafluorobenzene
 Concen: 50.000 ug/l
 RT: 7.967 min Scan# 1028
 Delta R.T. -0.018 min
 Lab File: VD071123.D
 Acq: 02 Dec 2021 17:38

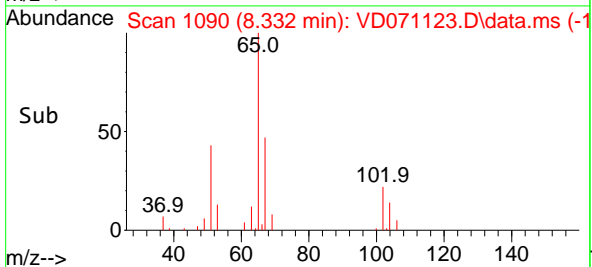
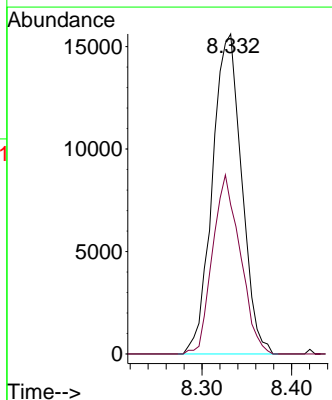
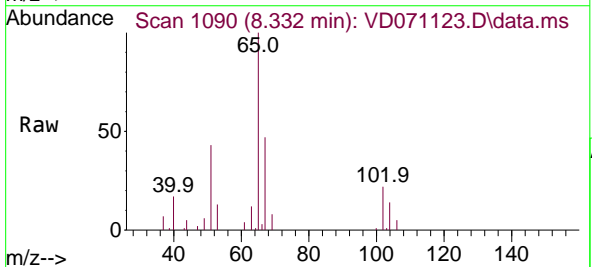
Instrument : MSVOA_D
 ClientSampleId : MINEBROOK-1-COMP

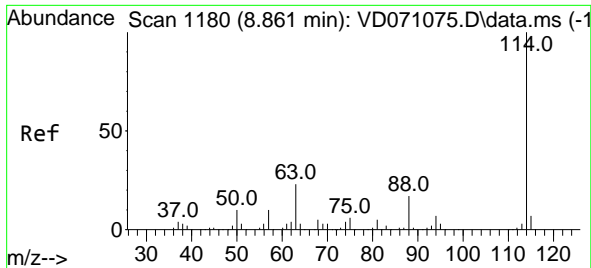
Tgt Ion:168 Resp: 37178
 Ion Ratio Lower Upper
 168 100
 99 50.5 46.6 69.8



#33
 1,2-Dichloroethane-d4
 Concen: 81.010 ug/l
 RT: 8.332 min Scan# 1090
 Delta R.T. 0.006 min
 Lab File: VD071123.D
 Acq: 02 Dec 2021 17:38

Tgt Ion: 65 Resp: 35340
 Ion Ratio Lower Upper
 65 100
 67 53.1 0.0 112.2

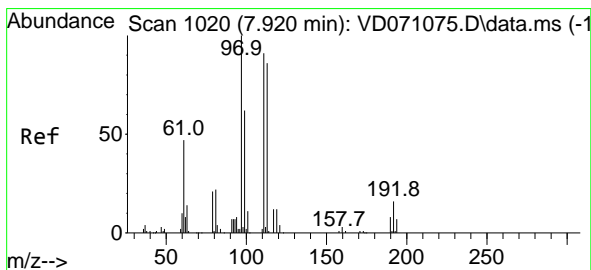
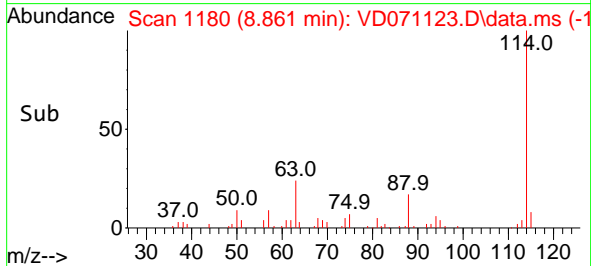
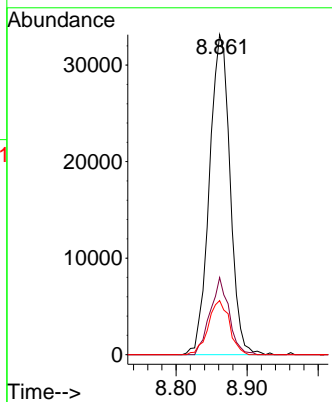
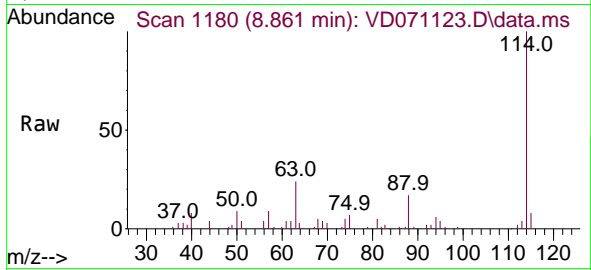




#34
 1,4-Difluorobenzene
 Concen: 50.000 ug/l
 RT: 8.861 min Scan# 1119
 Delta R.T. 0.000 min
 Lab File: VD071123.D
 Acq: 02 Dec 2021 17:38

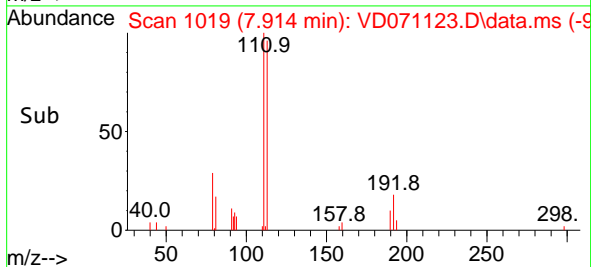
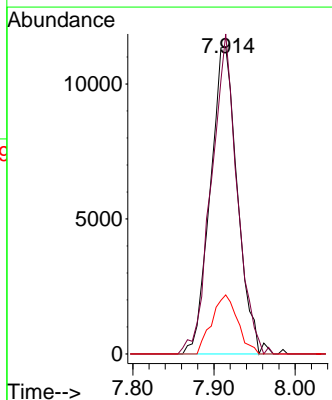
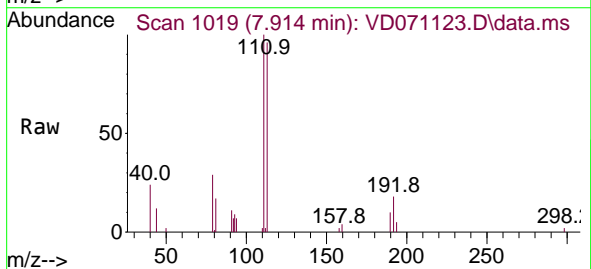
Instrument :
 MSVOA_D
 ClientSampleId :
 MINEBROOK-1-COMPRE

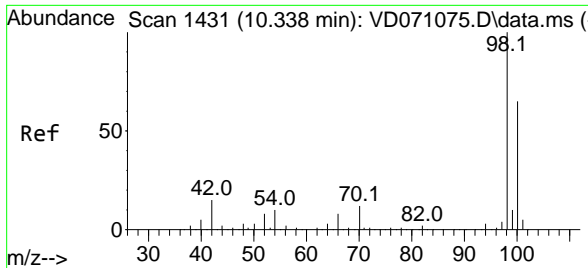
Tgt Ion	Resp	Lower	Upper
114	100		
63	24.1	0.0	41.8
88	16.9	0.0	32.8



#35
 Dibromofluoromethane
 Concen: 62.142 ug/l
 RT: 7.914 min Scan# 1019
 Delta R.T. -0.006 min
 Lab File: VD071123.D
 Acq: 02 Dec 2021 17:38

Tgt Ion	Resp	Lower	Upper
113	100		
111	98.8	82.0	123.0
192	18.3	15.2	22.8

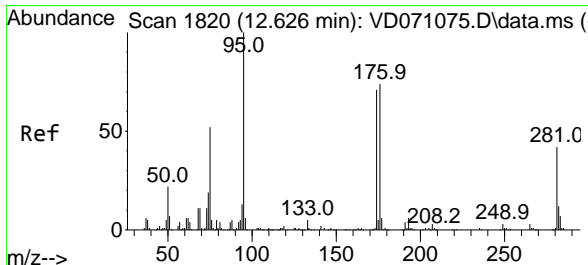
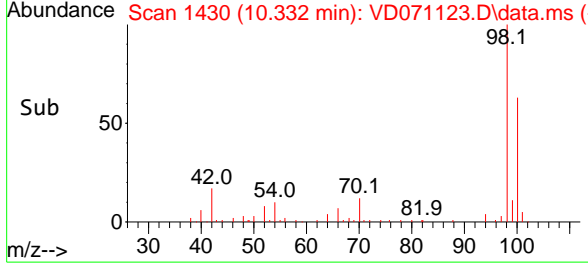
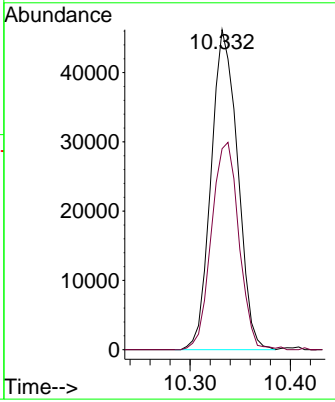
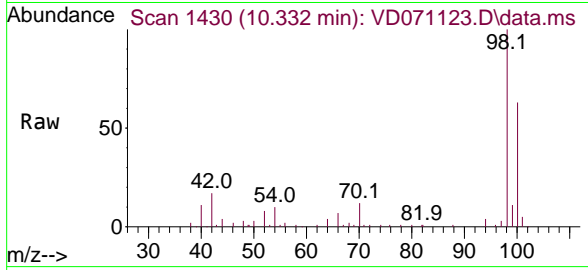




#50
 Toluene-d8
 Concen: 52.527 ug/l
 RT: 10.332 min Scan# 1430
 Delta R.T. -0.006 min
 Lab File: VD071123.D
 Acq: 02 Dec 2021 17:38

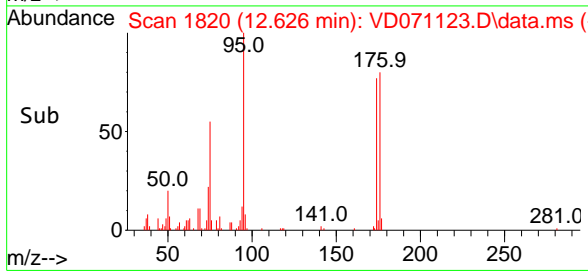
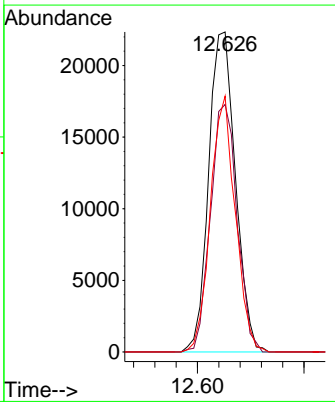
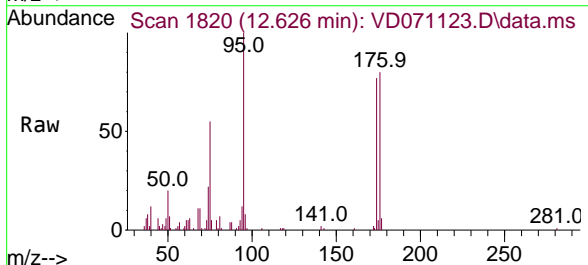
Instrument :
 MSVOA_D
ClientSampleId :
 MINEBROOK-1-COMPRE

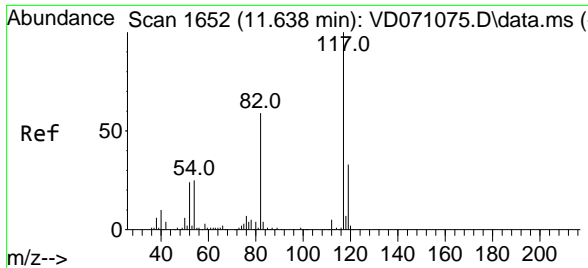
Tgt Ion: 98 Resp: 85007
 Ion Ratio Lower Upper
 98 100
 100 67.0 51.8 77.6



#62
 4-Bromofluorobenzene
 Concen: 69.469 ug/l
 RT: 12.626 min Scan# 1820
 Delta R.T. -0.000 min
 Lab File: VD071123.D
 Acq: 02 Dec 2021 17:38

Tgt Ion: 95 Resp: 38971
 Ion Ratio Lower Upper
 95 100
 174 76.9 0.0 159.4
 176 74.3 0.0 154.0



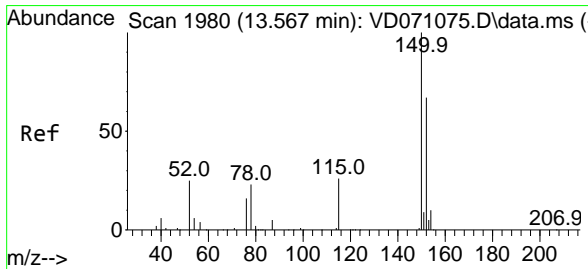
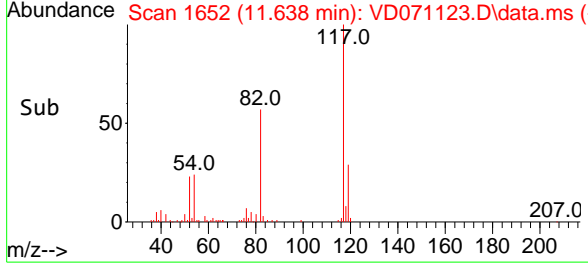
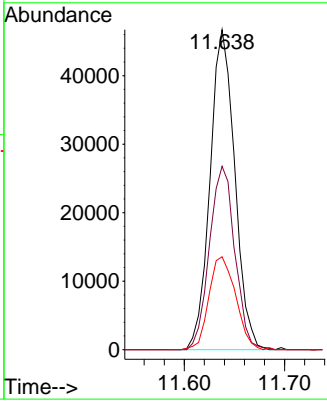
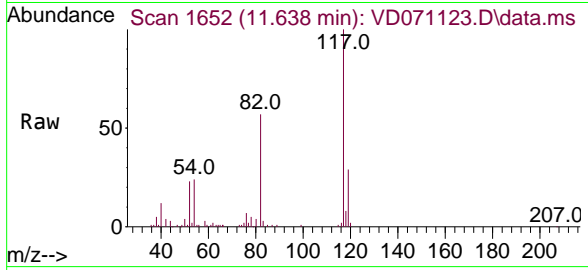


#63
 Chlorobenzene-d5
 Concen: 50.000 ug/l
 RT: 11.638 min Scan# 1170
 Delta R.T. -0.000 min
 Lab File: VD071123.D
 Acq: 02 Dec 2021 17:38

Instrument : MSVOA_D
 ClientSampleId : MINEBROOK-1-COMPRE

Tgt Ion:117 Resp: 80010

Ion	Ratio	Lower	Upper
117	100		
82	57.3	44.7	67.1
119	29.0	26.2	39.4



#72
 1,4-Dichlorobenzene-d4
 Concen: 50.000 ug/l
 RT: 13.567 min Scan# 1980
 Delta R.T. -0.000 min
 Lab File: VD071123.D
 Acq: 02 Dec 2021 17:38

Tgt Ion:152 Resp: 40114

Ion	Ratio	Lower	Upper
152	100		
115	59.6	29.8	89.3
150	158.7	0.0	349.2

