

Data Path : Z:\voasrv\HPCHEM1\MSVOA_D\Data\VD120723\
 Data File : VD077774.D
 Acq On : 07 Dec 2023 12:21
 Operator : JC/SY
 Sample : 05646-04RE
 Misc : 3.12G/10ml/MSVOA_D/SOIL
 ALS Vial : 1 Sample Multiplier: 1

Instrument :
 MSVOA_D
 ClientSampleId :
 COAT8RE

Integration Parameters: LSCINT.P

Integrator: RTE
 Smoothing : OFF
 Sampling : 1
 Start Thrs : 0.2
 Stop Thrs : 0

Filtering: 5
 Min Area: 0 % of largest Peak
 Max Peaks: 100
 Peak Location: TOP

If leading or trailing edge < 100 prefer < Baseline drop else tangent >
 Peak separation: 5

Method : Z:\voasrv\HPCHEM1\MSVOA_D\Method\SFAMDLM112923SMA.M
 Title : SFAM01.0

Signal : TIC: VD077774.D\data.ms

peak #	R.T. min	first scan	max scan	last scan	PK TY	peak height	corr. area	corr. % max.	% of total
1	1.687	13	17	20	rBV	29620	40171	0.34%	0.145%
2	1.746	20	27	44	rVB	2070696	3037896	25.99%	10.933%
3	2.075	79	83	87	rBV3	5515	10720	0.09%	0.039%
4	2.281	113	118	124	rVB	224723	333224	2.85%	1.199%
5	2.811	202	208	219	rVB	173823	330756	2.83%	1.190%
6	3.246	279	282	283	rVB	2906	2408	0.02%	0.009%
7	3.311	287	293	294	rBV	3262	4740	0.04%	0.017%
8	3.375	303	304	307	rVB	3475	2283	0.02%	0.008%
9	3.464	317	319	320	rVB	2770	1712	0.01%	0.006%
10	3.722	361	363	364	rBV	2342	1365	0.01%	0.005%
11	3.787	372	374	377	rVB	2577	1554	0.01%	0.006%
12	3.846	383	384	387	rBV	2514	1979	0.02%	0.007%
13	3.928	387	398	408	rBV	170410	458670	3.92%	1.651%
14	4.193	442	443	447	rVB	2228	1937	0.02%	0.007%
15	4.234	447	450	451	rBV	2727	2113	0.02%	0.008%
16	4.293	456	460	461	rBV3	2447	2780	0.02%	0.010%
17	4.322	463	465	467	rVV	1863	1332	0.01%	0.005%
18	4.405	477	479	481	rBV	1537	1598	0.01%	0.006%
19	4.428	481	483	485	rVV	2679	1987	0.02%	0.007%
20	4.493	493	494	495	rBV	3432	1795	0.02%	0.006%
21	4.534	500	501	504	rVB	3727	1490	0.01%	0.005%
22	4.569	506	507	508	rBV	2813	1420	0.01%	0.005%
23	4.658	520	522	525	rBV	1775	1300	0.01%	0.005%
24	4.693	527	528	531	rVV	1917	1332	0.01%	0.005%
25	4.758	538	539	540	rBV	1735	916	0.01%	0.003%
26	4.893	559	562	565	rBV3	2835	4072	0.03%	0.015%
27	4.958	571	573	574	rBV	2430	1793	0.02%	0.006%
28	5.087	592	595	596	rBV	2168	2421	0.02%	0.009%
29	5.181	608	611	614	rBV	2960	3159	0.03%	0.011%
30	5.205	614	615	617	rVB	2971	1238	0.01%	0.004%
31	5.222	617	618	620	rBV	2560	1916	0.02%	0.007%
32	5.405	647	649	652	rBV	2615	2826	0.02%	0.010%
33	5.428	652	653	657	rBV	2772	2037	0.02%	0.007%
34	5.464	657	659	660	rBV	2127	1708	0.01%	0.006%
35	5.516	667	668	669	rVB	2907	1025	0.01%	0.004%
36	5.558	674	675	676	rBV	2595	1229	0.01%	0.004%

Data Path : Z:\voasrv\HPCHEM1\MSVOA_D\Data\VD120723\
 Data File : VD077774.D
 Acq On : 07 Dec 2023 12:21
 Operator : JC/SY
 Sample : 05646-04RE
 Misc : 3.12G/10ml/MSVOA_D/SOIL
 ALS Vial : 1 Sample Multiplier: 1

Instrument :
 MSVOA_D
 ClientSampleId :
 COAT8RE

Integration Parameters: LSCINT.P

Integrator: RTE
 Smoothing : OFF
 Sampling : 1
 Start Thrs: 0.2
 Stop Thrs : 0

Filtering: 5
 Min Area: 0 % of largest Peak
 Max Peaks: 100
 Peak Location: TOP

If leading or trailing edge < 100 prefer < Baseline drop else tangent >
 Peak separation: 5

Method : Z:\voasrv\HPCHEM1\MSVOA_D\Method\SFAMDLM112923SMA.M
 Title : SFAM01.0

37	5.587	676	680	681	rVB	2485	2244	0.02%	0.008%
38	5.605	681	683	687	rBV3	1445	1779	0.02%	0.006%
39	5.646	687	690	691	rBV2	2184	1568	0.01%	0.006%
40	5.758	706	709	710	rBV	2098	2197	0.02%	0.008%
41	5.775	710	712	713	rVV	2647	1604	0.01%	0.006%
42	5.816	717	719	722	rBV	1981	2309	0.02%	0.008%
43	5.875	727	729	732	rBV2	2083	1948	0.02%	0.007%
44	5.987	746	748	750	rVB	2390	1867	0.02%	0.007%
45	6.046	754	758	760	rBV	2809	4798	0.04%	0.017%
46	6.093	764	766	769	rVB	2159	2225	0.02%	0.008%
47	6.158	776	777	780	rVB	2331	1857	0.02%	0.007%
48	6.211	784	786	787	rBV	2715	1980	0.02%	0.007%
49	6.252	792	793	794	rVB	2719	960	0.01%	0.003%
50	6.458	827	828	831	rVB	2674	1371	0.01%	0.005%
51	6.569	845	847	849	rBV2	1887	1386	0.01%	0.005%
52	6.616	853	855	857	rVB	1628	999	0.01%	0.004%
53	6.640	857	859	860	rBV	1827	1240	0.01%	0.004%
54	6.669	863	864	866	rBV	2572	1930	0.02%	0.007%
55	6.740	874	876	879	rBV3	2429	1934	0.02%	0.007%
56	6.763	879	880	882	rBV	2081	1000	0.01%	0.004%
57	6.799	885	886	887	rVB	3212	1134	0.01%	0.004%
58	6.834	890	892	893	rBV	2554	1976	0.02%	0.007%
59	6.993	911	919	926	rBV3	27609	80966	0.69%	0.291%
60	7.187	950	952	953	rBV	2585	2027	0.02%	0.007%
61	7.311	969	973	975	rBV	2127	2413	0.02%	0.009%
62	7.369	982	983	986	rBV	3646	2807	0.02%	0.010%
63	7.399	986	988	989	rBV	3371	2387	0.02%	0.009%
64	7.493	1003	1004	1007	rVB	2545	1577	0.01%	0.006%
65	7.569	1007	1017	1029	rBV	204085	531870	4.55%	1.914%
66	7.722	1040	1043	1044	rBV	2733	3132	0.03%	0.011%
67	7.963	1082	1084	1085	rVB	2408	1072	0.01%	0.004%
68	8.122	1110	1111	1114	rBV	3200	2998	0.03%	0.011%
69	8.252	1115	1133	1145	rBV2	2550839	6906781	59.08%	24.857%
70	8.716	1210	1212	1214	rBV	1780	1460	0.01%	0.005%
71	8.781	1214	1223	1231	rVV	379388	754813	6.46%	2.716%
72	9.210	1289	1296	1307	rVB	260573	549559	4.70%	1.978%
73	9.675	1373	1375	1378	rBV	2730	3926	0.03%	0.014%
74	9.740	1385	1386	1388	rBV	2117	1044	0.01%	0.004%
75	9.863	1405	1407	1410	rBV	2613	1706	0.01%	0.006%
76	9.934	1418	1419	1420	rVB	2720	960	0.01%	0.003%

Data Path : Z:\voasrv\HPCHEM1\MSVOA_D\Data\VD120723\
 Data File : VD077774.D
 Acq On : 07 Dec 2023 12:21
 Operator : JC/SY
 Sample : 05646-04RE
 Misc : 3.12G/10ml/MSVOA_D/SOIL
 ALS Vial : 1 Sample Multiplier: 1

Instrument :
 MSVOA_D
 ClientSampleId :
 COAT8RE

Integration Parameters: LSCINT.P

Integrator: RTE
 Smoothing : OFF Filtering: 5
 Sampling : 1 Min Area: 0 % of largest Peak
 Start Thrs: 0.2 Max Peaks: 100
 Stop Thrs : 0 Peak Location: TOP

If leading or trailing edge < 100 prefer < Baseline drop else tangent >
 Peak separation: 5

Method : Z:\voasrv\HPCHEM1\MSVOA_D\Method\SFAMDLM112923SMA.M
 Title : SFAM01.0

77	9.981	1420	1427	1435	rBV2	145673	275414	2.36%	0.991%
78	10.275	1469	1477	1486	rBV	485979	897669	7.68%	3.231%
79	10.528	1514	1520	1527	rVB2	86291	156741	1.34%	0.564%
80	10.663	1537	1543	1554	rVB	101065	193897	1.66%	0.698%
81	10.752	1556	1558	1559	rBV	3709	2353	0.02%	0.008%
82	10.881	1574	1580	1587	rBV	117999	188139	1.61%	0.677%
83	11.022	1603	1604	1606	rBV	4526	3169	0.03%	0.011%
84	11.099	1616	1617	1618	rBV	2348	930	0.01%	0.003%
85	11.287	1647	1649	1650	rBV	2869	2033	0.02%	0.007%
86	11.610	1693	1704	1717	rBV	6878556	11690040	100.00%	42.071%
87	11.781	1731	1733	1735	rVB	3327	1785	0.02%	0.006%
88	11.898	1751	1753	1754	rBV	3464	2737	0.02%	0.010%
89	12.157	1795	1797	1798	rBV	3025	1722	0.01%	0.006%
90	12.351	1828	1830	1831	rVB	3128	1479	0.01%	0.005%
91	12.416	1839	1841	1843	rBV	2708	2212	0.02%	0.008%
92	12.581	1863	1869	1875	rBV	97952	162504	1.39%	0.585%
93	12.651	1875	1881	1888	rVV	118975	199005	1.70%	0.716%
94	12.775	1900	1902	1905	rVB	3666	2230	0.02%	0.008%
95	13.463	2013	2019	2024	rBV2	51983	94160	0.81%	0.339%
96	13.522	2024	2029	2040	rVB2	209226	451669	3.86%	1.625%
97	13.663	2051	2053	2054	rBV	2589	1132	0.01%	0.004%
98	13.816	2074	2079	2087	rVB	134444	227065	1.94%	0.817%
99	13.993	2107	2109	2110	rVB	3706	1751	0.01%	0.006%
100	14.051	2114	2119	2126	rVV	41749	64018	0.55%	0.230%

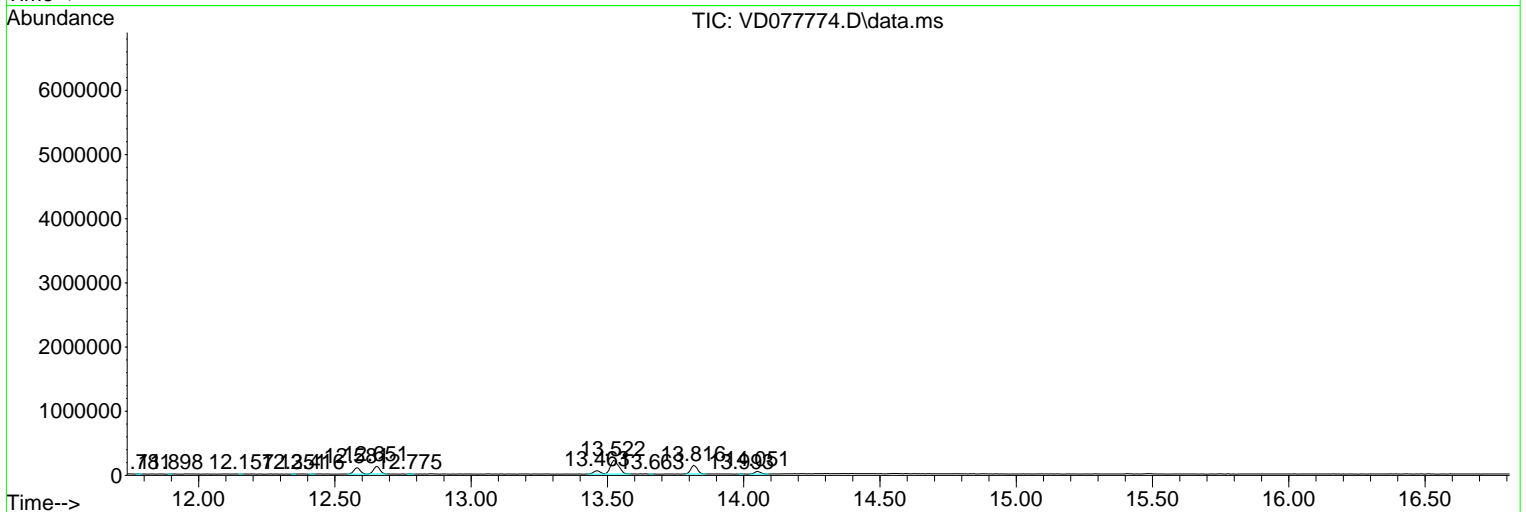
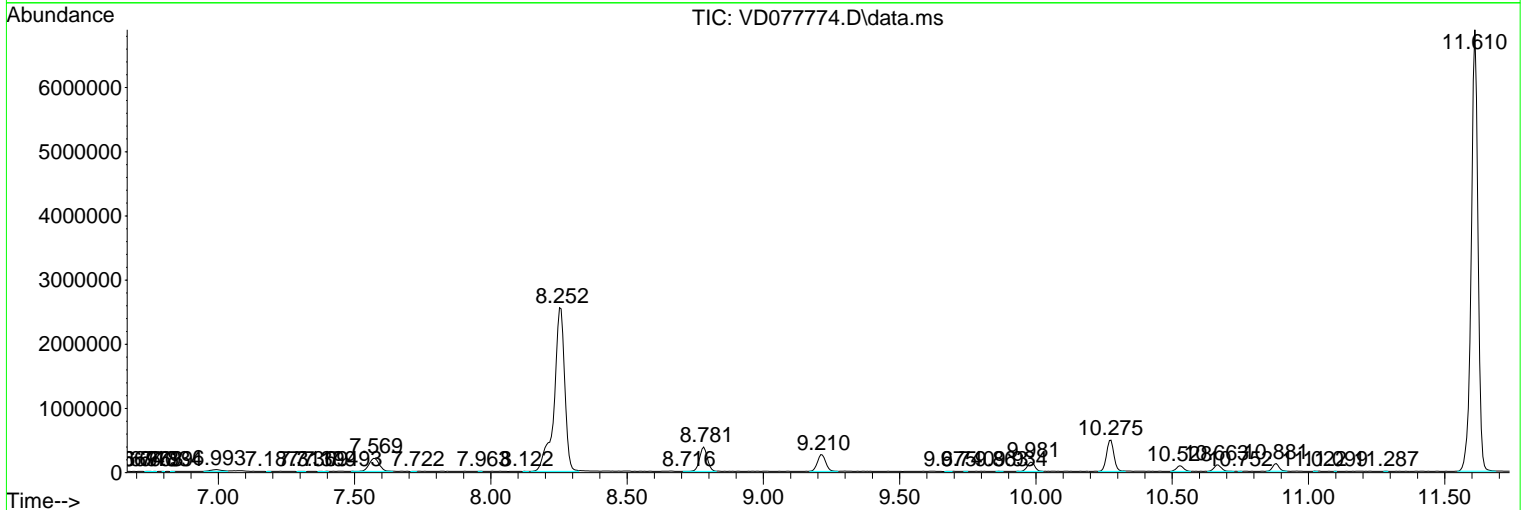
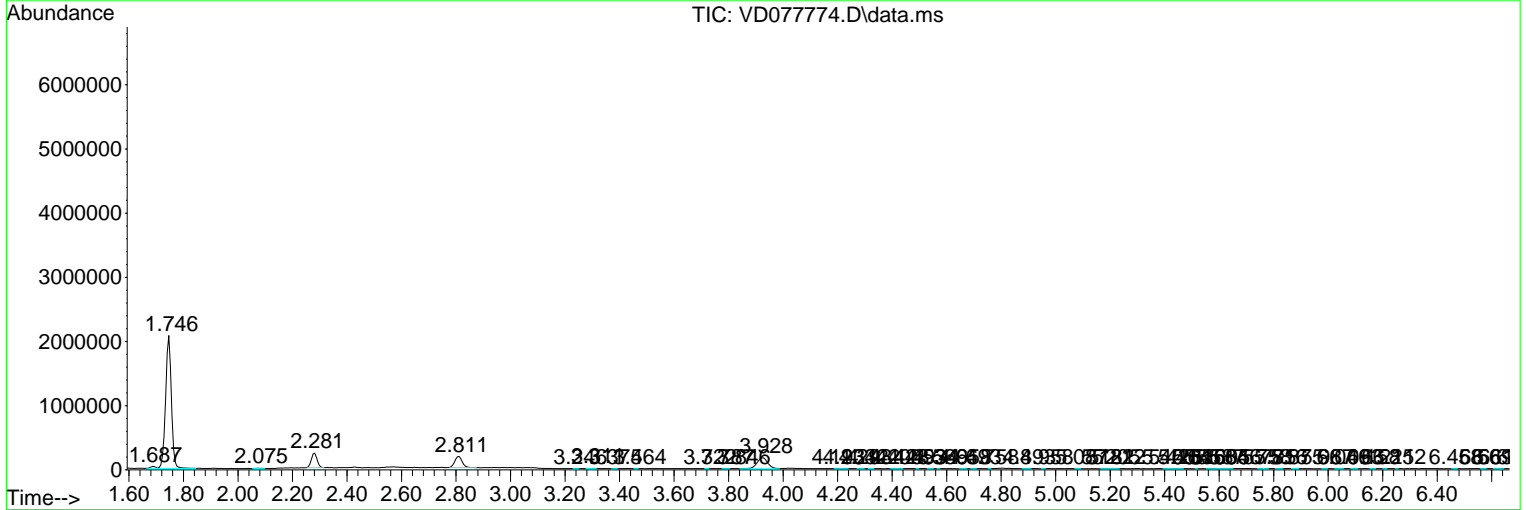
Sum of corrected areas: 27786560

Data Path : Z:\voasrv\HPCHEM1\MSVOA_D\Data\VD120723\
 Data File : VD077774.D
 Acq On : 07 Dec 2023 12:21
 Operator : JC/SY
 Sample : 05646-04RE
 Misc : 3.12G/10ml/MSVOA_D/SOIL
 ALS Vial : 1 Sample Multiplier: 1

Instrument :
 MSVOA_D
 ClientSampleId :
 COAT8RE

Quant Method : Z:\voasrv\HPCHEM1\MSVOA_D\Method\SFAMDLM112923SMA.M
 Quant Title : SFAM01.0

TIC Library : C:\Database\NIST20.L
 TIC Integration Parameters: LSCINT.P



Data Path : Z:\voasrv\HPCHEM1\MSVOA_D\Data\VD120723\
 Data File : VD077774.D
 Acq On : 07 Dec 2023 12:21
 Operator : JC/SY
 Sample : 05646-04RE
 Misc : 3.12G/10ml/MSVOA_D/SOIL
 ALS Vial : 1 Sample Multiplier: 1

Instrument :
 MSVOA_D
 ClientSampleId :
 COAT8RE

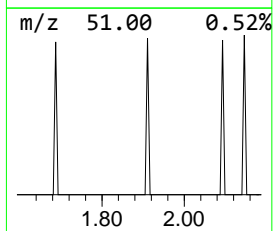
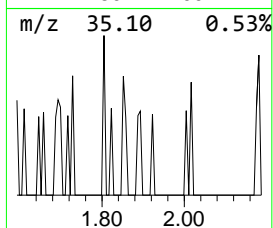
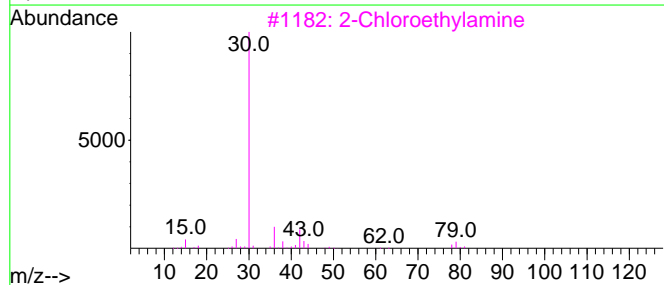
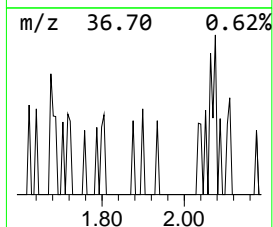
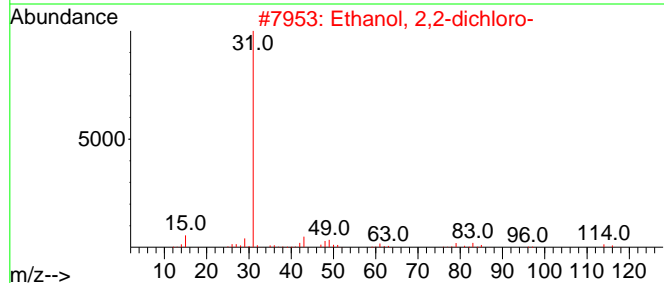
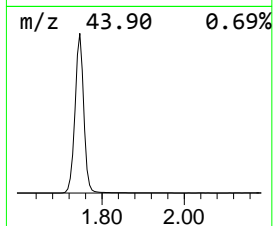
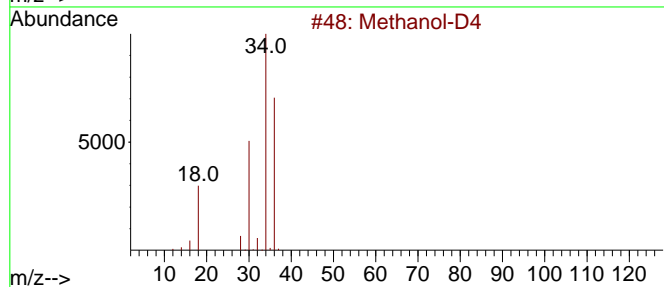
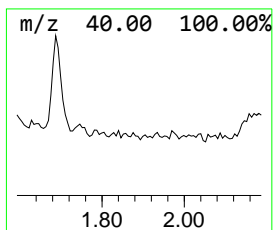
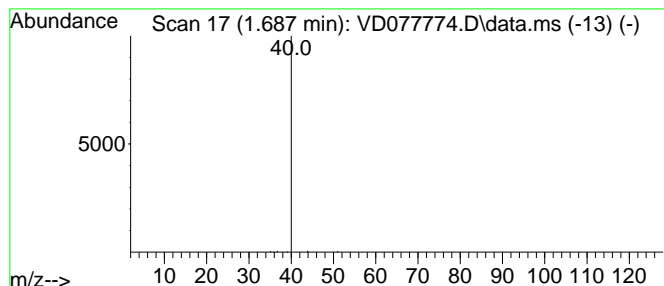
Quant Method : Z:\voasrv\HPCHEM1\MSVOA_D\Method\SFAMDLM112923SMA.M
 Quant Title : SFAM01.0

TIC Library : C:\Database\NIST20.L
 TIC Integration Parameters: LSCINT.P

 Peak Number 1 unknown-01 Concentration Rank 5

R.T.	EstConc	Area	Relative to ISTD	R.T.
1.687	1.33 ug/L	40171	1,4-Difluorobenzene	8.781

Hit#	of	Tentative ID	MW	MolForm	CAS#	Qual
1	5	Methanol-D4	36	CD4O	000811-98-3	1
2		Ethanol, 2,2-dichloro-	114	C2H4C12O	000598-38-9	1
3		2-Chloroethylamine	79	C2H6C1N	000689-98-5	1
4		Ethanol, 2,2-dichloro-	114	C2H4C12O	000598-38-9	1
5		Mercaptamine	77	C2H7NS	000060-23-1	1



Data Path : Z:\voasrv\HPCHEM1\MSVOA_D\Data\VD120723\
Data File : VD077774.D
Acq On : 07 Dec 2023 12:21
Operator : JC/SY
Sample : 05646-04RE
Misc : 3.12G/10ml/MSVOA_D/SOIL
ALS Vial : 1 Sample Multiplier: 1

Instrument :
MSVOA_D
ClientSampleId :
C0AT8RE

Quant Method : Z:\voasrv\HPCHEM1\MSVOA_D\Method\SFAMDLM112923SMA.M
Quant Title : SFAM01.0

TIC Library : C:\Database\NIST20.L
TIC Integration Parameters: LSCINT.P

TIC Top Hit name	RT	EstConc	Units	Response	--Internal Standard--			
					#	RT	Resp	Conc
-----	-----	-----	-----	-----	-----	-----	-----	-----
unknown-01	1.687	1.3	ug/L	40171	1	8.781	754813	25.0