

Data Path : Z:\voasrv\HPCHEM1\MSVOA\_D\Data\VD121121\  
 Data File : VD071277.D  
 Acq On : 11 Dec 2021 18:41  
 Operator : VA/SY  
 Sample : M5051-03  
 Misc : 5.04G/5.00ml/MSVOA\_D/SOIL  
 ALS Vial : 1 Sample Multiplier: 1

Instrument :  
 MSVOA\_D  
 ClientSampleId :

Quant Time: Dec 12 18:51:31 2021  
 Quant Method : Z:\voasrv\HPCHEM1\MSVOA\_D\Method\82D112921S.M  
 Quant Title : SW846 8260  
 QLast Update : Mon Nov 29 17:54:09 2021  
 Response via : Initial Calibration

Compound	R.T.	QIon	Response	Conc	Units	Dev(Min)
Internal Standards						
1) Pentafluorobenzene	7.979	168	319098	50.000	ug/l	0.00
34) 1,4-Difluorobenzene	8.861	114	523398	50.000	ug/l	0.00
63) Chlorobenzene-d5	11.638	117	557915	50.000	ug/l	0.00
72) 1,4-Dichlorobenzene-d4	13.561	152	284223	50.000	ug/l	0.00
System Monitoring Compounds						
33) 1,2-Dichloroethane-d4	8.326	65	145054	38.741	ug/l	0.00
Spiked Amount	50.000	Range	50 - 163	Recovery	=	77.480%
35) Dibromofluoromethane	7.914	113	157144	47.149	ug/l	0.00
Spiked Amount	50.000	Range	54 - 147	Recovery	=	94.300%
50) Toluene-d8	10.332	98	663604	52.320	ug/l	0.00
Spiked Amount	50.000	Range	49 - 140	Recovery	=	104.640%
62) 4-Bromofluorobenzene	12.620	95	279965	63.678	ug/l	0.00
Spiked Amount	50.000	Range	25 - 144	Recovery	=	127.360%
Target Compounds						
						Qvalue
10) Methyl Iodide	4.314	142	66	4.577	ug/l #	40
11) Tert butyl alcohol	5.179	59	4476	Below Cal	#	71
16) Acetone	4.167	43	4964	35.174	ug/l #	84
20) Methylene Chloride	4.962	84	42871	7.824	ug/l #	85
23) Vinyl Acetate	6.426	43	60	27.227	ug/l #	72
25) 2-Butanone	7.238	43	363	28.639	ug/l #	45
31) Cyclohexane	7.973	56	9199	1.444	ug/l #	42
36) 1,1-Dichloropropene	7.973	75	28655	5.858	ug/l #	49
38) Carbon Tetrachloride	7.979	117	34136	7.079	ug/l #	18
41) Methacrylonitrile	7.573	41	164	Below Cal	#	42
43) Isopropyl Acetate	8.285	43	2621	5.728	ug/l #	22
51) 4-Methyl-2-Pentanone	10.220	43	739	30.924	ug/l #	34
52) Toluene	10.397	92	9091	1.078	ug/l	97
56) Ethyl methacrylate	10.667	69	825	6.182	ug/l #	1
59) 2-Hexanone	10.944	43	3706	36.353	ug/l #	22
67) Ethyl Benzene	11.738	91	121649	6.242	ug/l	92
68) m/p-Xylenes	11.843	106	160481	21.813	ug/l	98
69) o-Xylene	12.173	106	118089	17.078	ug/l	98
71) Bromoform	12.626	173	2551	1.303	ug/l #	1
73) Isopropylbenzene	12.473	105	36010	1.750	ug/l	97
74) N-amyl acetate	12.261	43	34639	11.148	ug/l #	55
75) 1,1,2,2-Tetrachloroethane	12.691	83	3712	1.095	ug/l #	89
76) 1,2,3-Trichloropropane	12.620	75	157289	58.084	ug/l #	1
78) n-propylbenzene	12.808	91	75825	2.959	ug/l	99
79) 2-Chlorotoluene	12.873	91	44583	3.099	ug/l #	42
80) 1,3,5-Trimethylbenzene	12.949	105	485701	28.620	ug/l	99
81) trans-1,4-Dichloro-2-b...	12.620	75	157289	125.941	ug/l #	18
82) 4-Chlorotoluene	12.949	91	58099	3.891	ug/l #	45
83) tert-Butylbenzene	13.255	119	90568	6.214	ug/l #	66
84) 1,2,4-Trimethylbenzene	13.255	105	706383	42.634	ug/l	99
85) sec-Butylbenzene	13.390	105	45512	2.045	ug/l	87
86) p-Isopropyltoluene	13.502	119	57694	3.169	ug/l	96
90) Hexachloroethane	14.108	117	17391	5.039	ug/l #	14
92) 1,2-Dibromo-3-Chloropr...	14.508	75	840	1.522	ug/l #	4
95) Naphthalene	15.384	128	254617	30.685	ug/l	100

Data Path : Z:\voasrv\HPCHEM1\MSVOA\_D\Data\VD121121\  
Data File : VD071277.D  
Acq On : 11 Dec 2021 18:41  
Operator : VA/SY  
Sample : M5051-03  
Misc : 5.04G/5.00ml/MSVOA\_D/SOIL  
ALS Vial : 1 Sample Multiplier: 1

Instrument :  
MSVOA\_D  
ClientSampleId :

Quant Time: Dec 12 18:51:31 2021  
Quant Method : Z:\voasrv\HPCHEM1\MSVOA\_D\Method\82D112921S.M  
Quant Title : SW846 8260  
QLast Update : Mon Nov 29 17:54:09 2021  
Response via : Initial Calibration

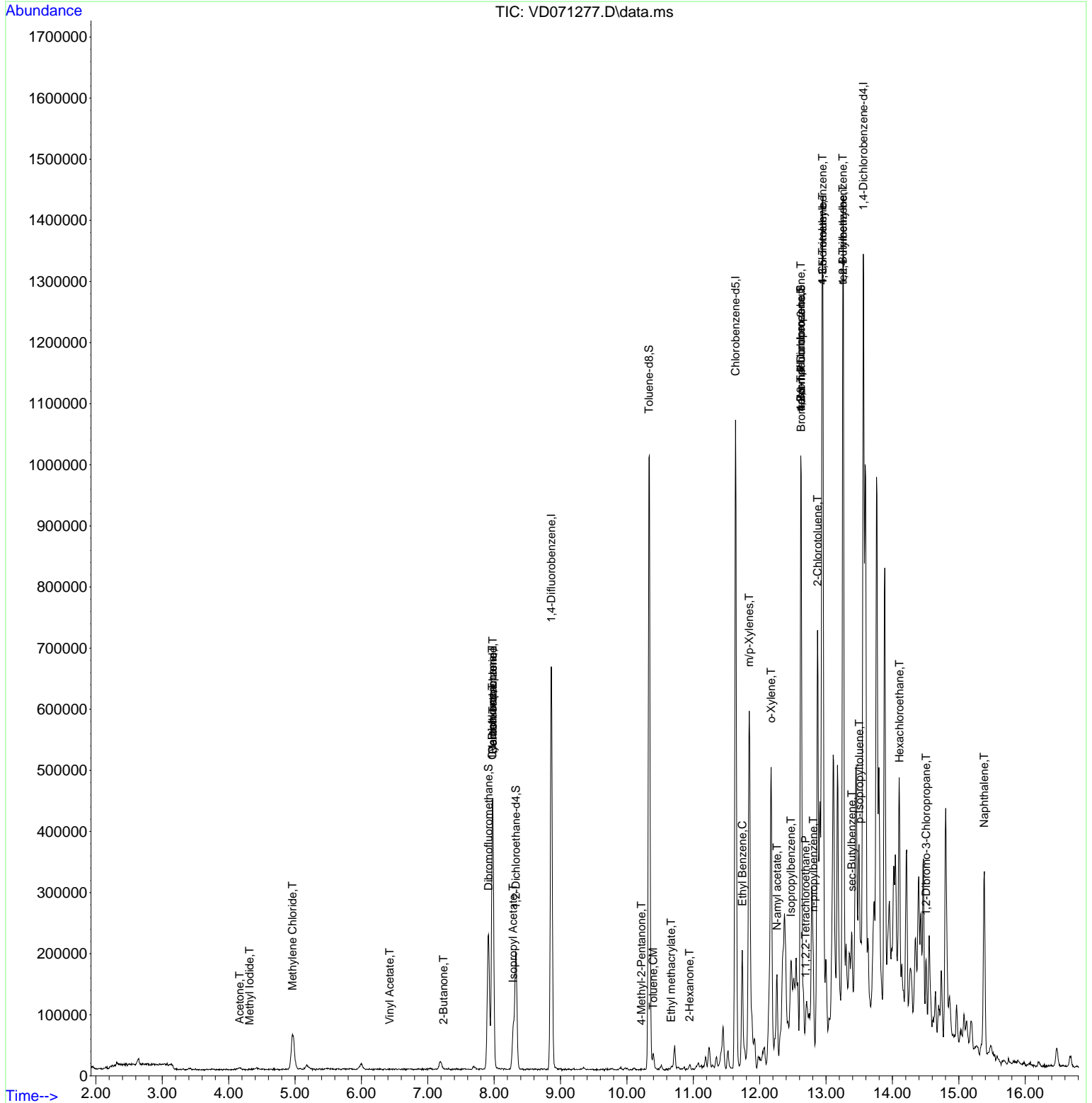
Compound	R.T.	QIon	Response	Conc	Units	Dev(Min)
----------	------	------	----------	------	-------	----------

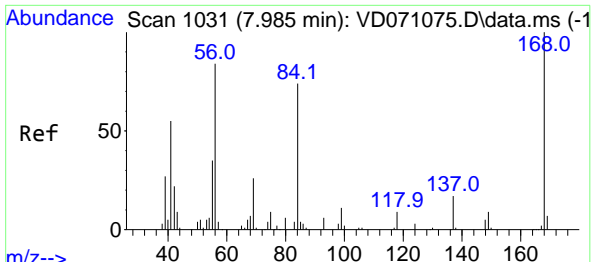
-----  
(#) = qualifier out of range (m) = manual integration (+) = signals summed

Data Path : Z:\voasrv\HPCHEM1\MSVOA\_D\Data\VD121121\  
 Data File : VD071277.D  
 Acq On : 11 Dec 2021 18:41  
 Operator : VA/SY  
 Sample : M5051-03  
 Misc : 5.04G/5.00ml/MSVOA\_D/SOIL  
 ALS Vial : 1 Sample Multiplier: 1

Instrument :  
 MSVOA\_D  
 ClientSampleId :

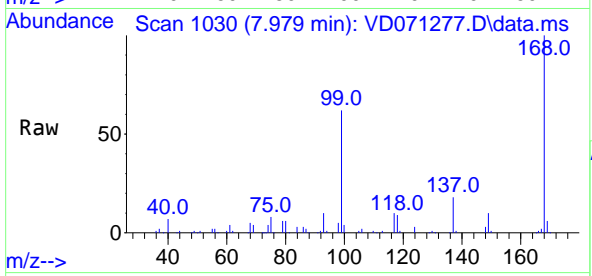
Quant Time: Dec 12 18:51:31 2021  
 Quant Method : Z:\voasrv\HPCHEM1\MSVOA\_D\Method\82D112921S.M  
 Quant Title : SW846 8260  
 QLast Update : Mon Nov 29 17:54:09 2021  
 Response via : Initial Calibration



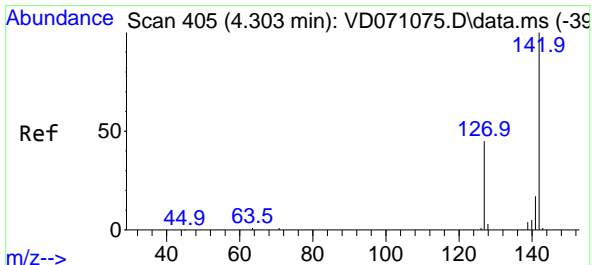
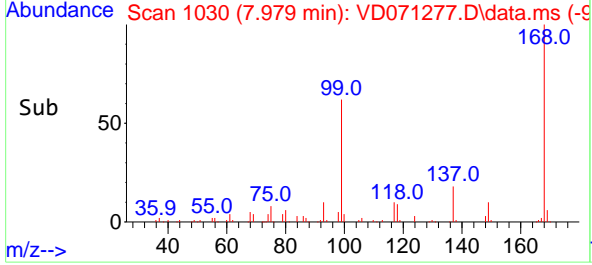
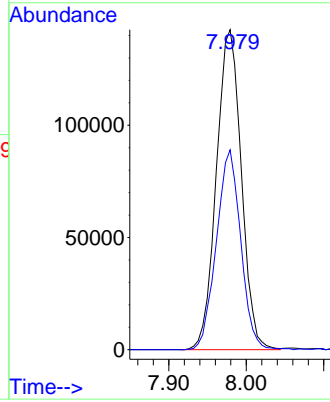


#1  
 Pentafluorobenzene  
 Concen: 50.000 ug/l  
 RT: 7.979 min Scan# 1030  
 Delta R.T. -0.006 min  
 Lab File: VD071277.D  
 Acq: 11 Dec 2021 18:41

Instrument :  
 MSVOA\_D  
 ClientSampleId :

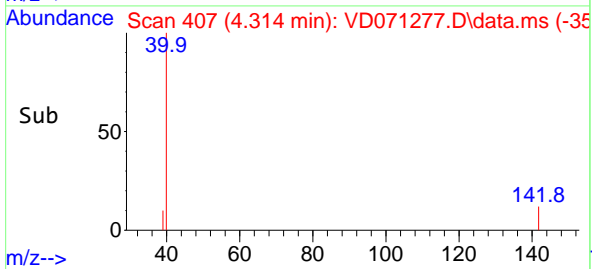
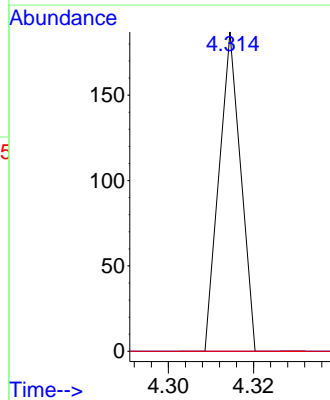
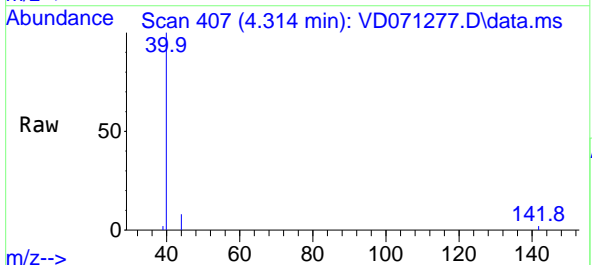


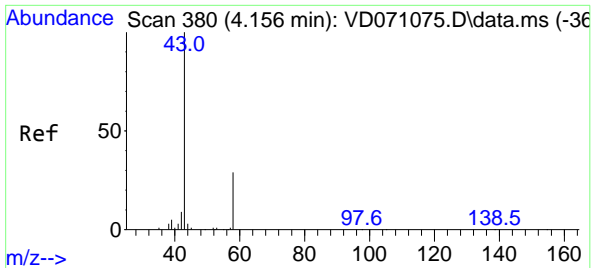
Tgt Ion:168 Resp: 319098  
 Ion Ratio Lower Upper  
 168 100  
 99 62.4 46.6 69.8



#10  
 Methyl Iodide  
 Concen: 4.577 ug/l  
 RT: 4.314 min Scan# 407  
 Delta R.T. 0.011 min  
 Lab File: VD071277.D  
 Acq: 11 Dec 2021 18:41

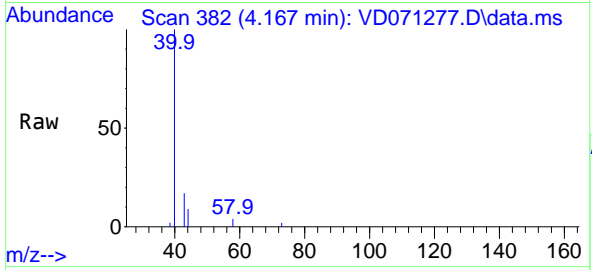
Tgt Ion:142 Resp: 66  
 Ion Ratio Lower Upper  
 142 100  
 127 0.0 35.0 52.4#  
 141 0.0 12.0 18.0#



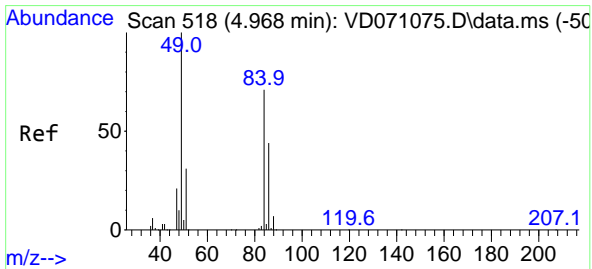
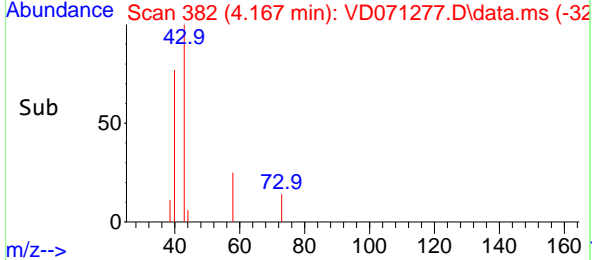
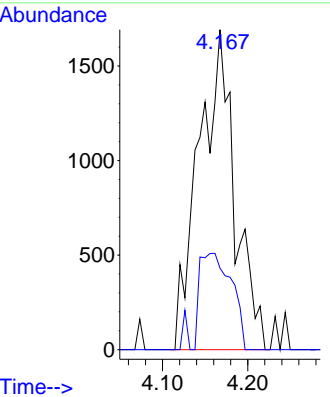


#16  
 Acetone  
 Concen: 35.174 ug/l  
 RT: 4.167 min Scan# 380  
 Delta R.T. 0.011 min  
 Lab File: VD071277.D  
 Acq: 11 Dec 2021 18:41

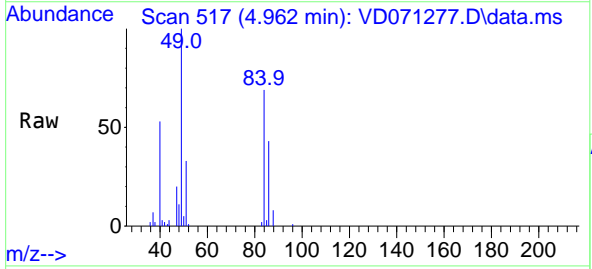
Instrument : MSVOA\_D  
 ClientSampleId :



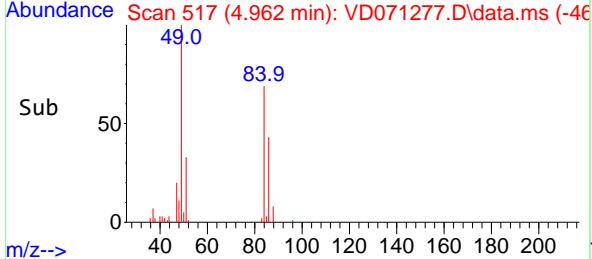
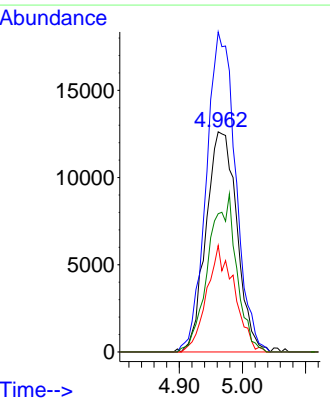
Tgt Ion: 43 Resp: 4964  
 Ion Ratio Lower Upper  
 43 100  
 58 25.5 27.8 41.8#

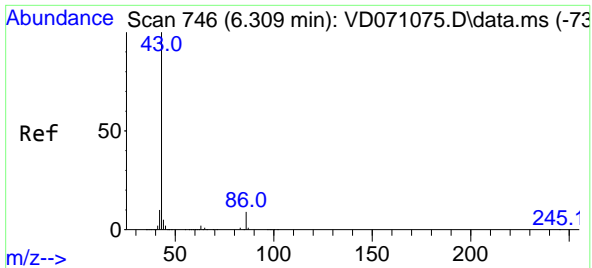


#20  
 Methylene Chloride  
 Concen: 7.824 ug/l  
 RT: 4.962 min Scan# 517  
 Delta R.T. -0.006 min  
 Lab File: VD071277.D  
 Acq: 11 Dec 2021 18:41



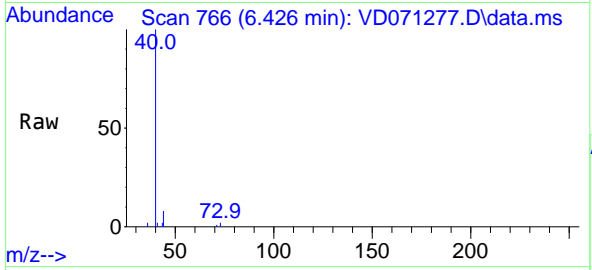
Tgt Ion: 84 Resp: 42871  
 Ion Ratio Lower Upper  
 84 100  
 49 145.3 95.8 143.6#  
 51 48.4 30.9 46.3#  
 86 62.8 50.3 75.5



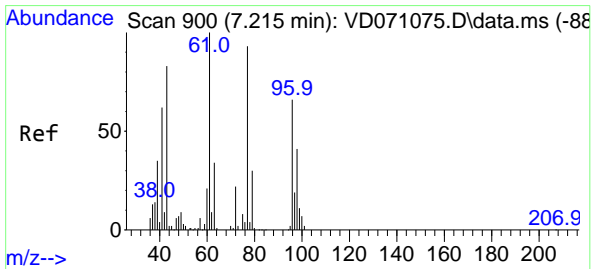
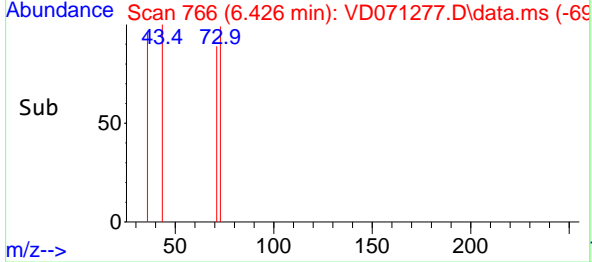
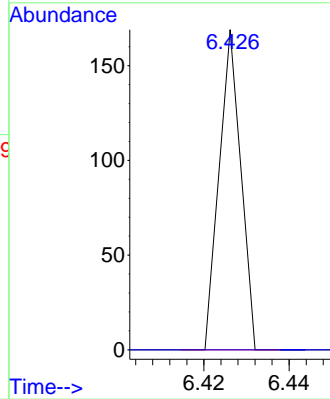


#23  
 Vinyl Acetate  
 Concen: 27.227 ug/l  
 RT: 6.426 min Scan# 704  
 Delta R.T. 0.117 min  
 Lab File: VD071277.D  
 Acq: 11 Dec 2021 18:41

Instrument : MSVOA\_D  
 ClientSampleId :

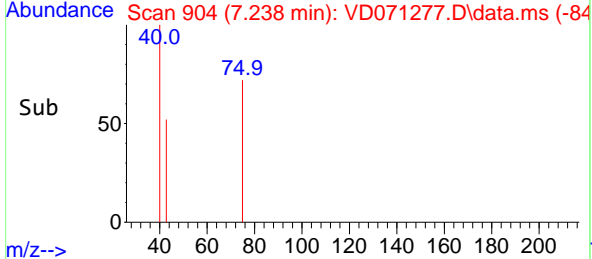
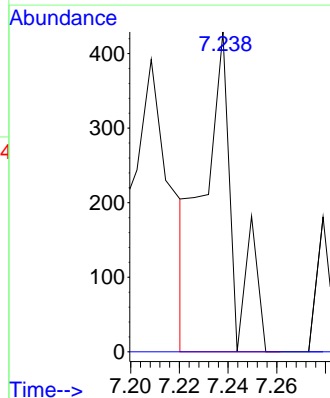
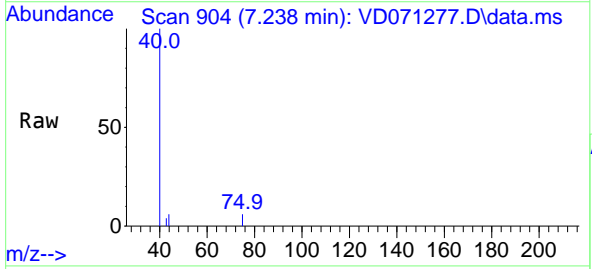


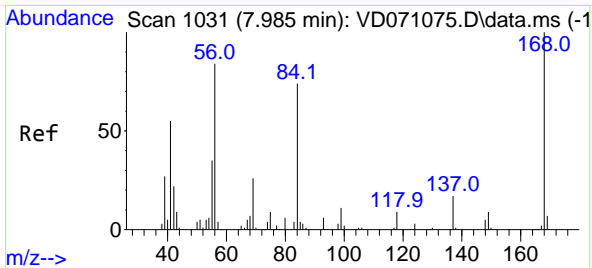
Tgt Ion: 43 Resp: 60  
 Ion Ratio Lower Upper  
 43 100  
 86 0.0 8.2 12.4#



#25  
 2-Butanone  
 Concen: 28.639 ug/l  
 RT: 7.238 min Scan# 904  
 Delta R.T. 0.023 min  
 Lab File: VD071277.D  
 Acq: 11 Dec 2021 18:41

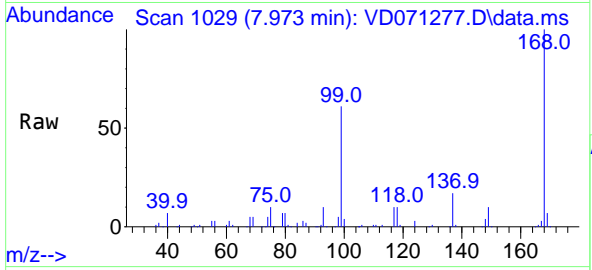
Tgt Ion: 43 Resp: 363  
 Ion Ratio Lower Upper  
 43 100  
 72 0.0 23.8 35.6#



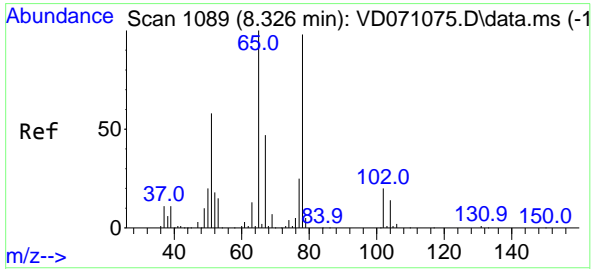
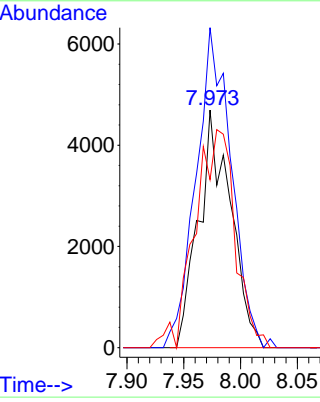
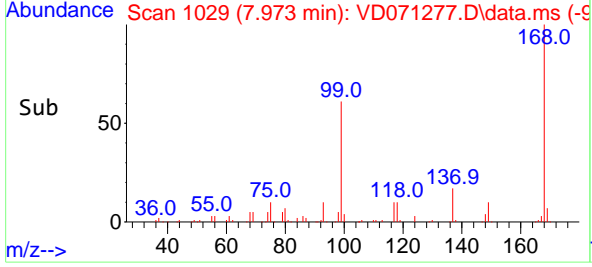


#31  
 Cyclohexane  
 Concen: 1.444 ug/l  
 RT: 7.973 min Scan# 1029  
 Delta R.T. -0.012 min  
 Lab File: VD071277.D  
 Acq: 11 Dec 2021 18:41

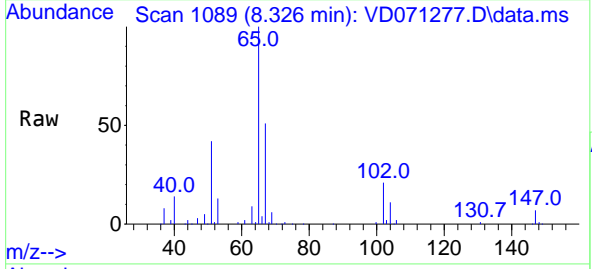
Instrument : MSVOA\_D  
 ClientSampleId :



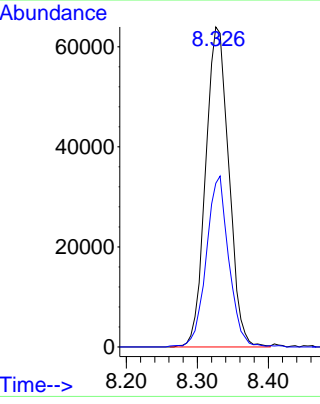
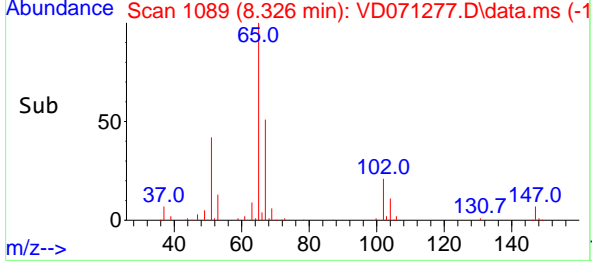
Tgt Ion: 56 Resp: 9199  
 Ion Ratio Lower Upper  
 56 100  
 69 130.8 25.9 38.9#  
 84 70.7 64.3 96.5

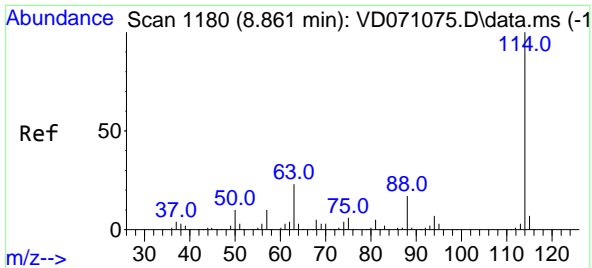


#33  
 1,2-Dichloroethane-d4  
 Concen: 38.741 ug/l  
 RT: 8.326 min Scan# 1089  
 Delta R.T. 0.000 min  
 Lab File: VD071277.D  
 Acq: 11 Dec 2021 18:41



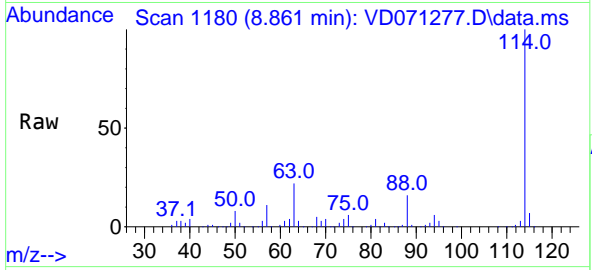
Tgt Ion: 65 Resp: 145054  
 Ion Ratio Lower Upper  
 65 100  
 67 51.6 0.0 112.2



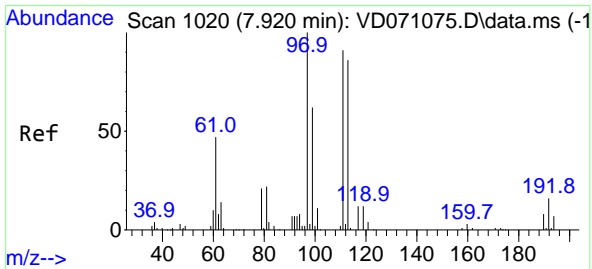
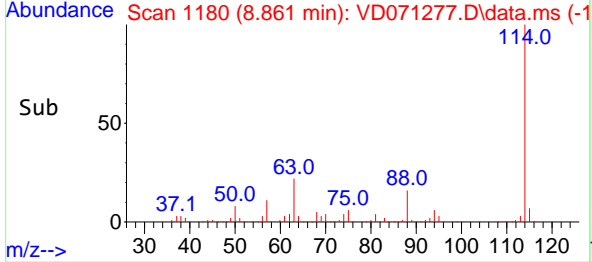
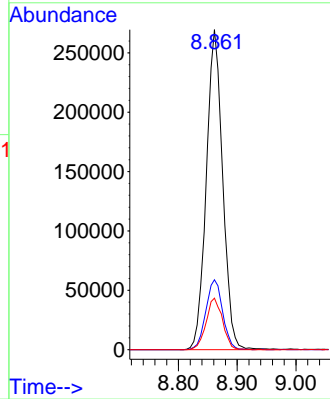


#34  
 1,4-Difluorobenzene  
 Concen: 50.000 ug/l  
 RT: 8.861 min Scan# 1119  
 Delta R.T. 0.000 min  
 Lab File: VD071277.D  
 Acq: 11 Dec 2021 18:41

Instrument : MSVOA\_D  
 ClientSampleId :

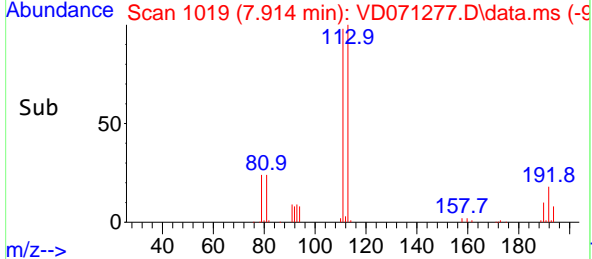
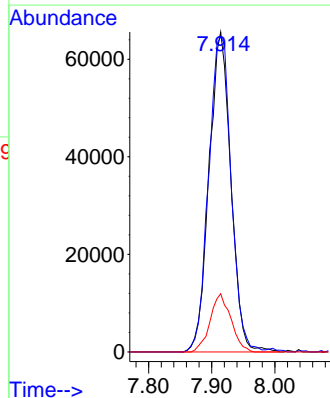
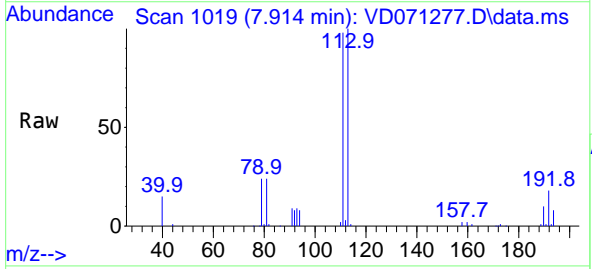


Tgt Ion:114 Resp: 523398  
 Ion Ratio Lower Upper  
 114 100  
 63 21.8 0.0 41.8  
 88 16.1 0.0 32.8

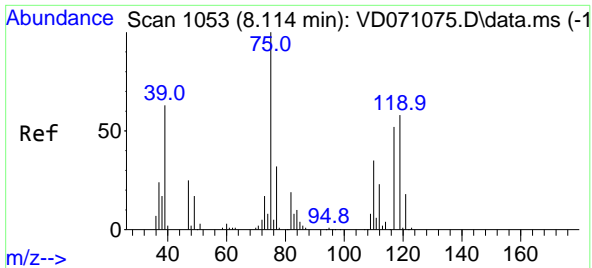


#35  
 Dibromofluoromethane  
 Concen: 47.149 ug/l  
 RT: 7.914 min Scan# 1019  
 Delta R.T. -0.006 min  
 Lab File: VD071277.D  
 Acq: 11 Dec 2021 18:41

Tgt Ion:113 Resp: 157144  
 Ion Ratio Lower Upper  
 113 100  
 111 102.3 82.0 123.0  
 192 17.4 15.2 22.8

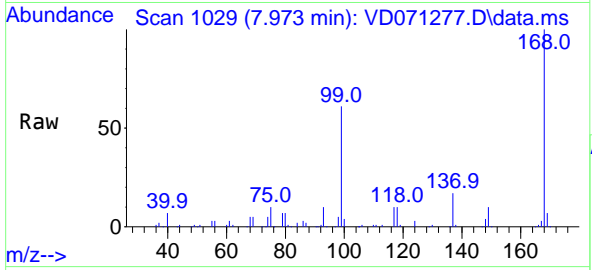




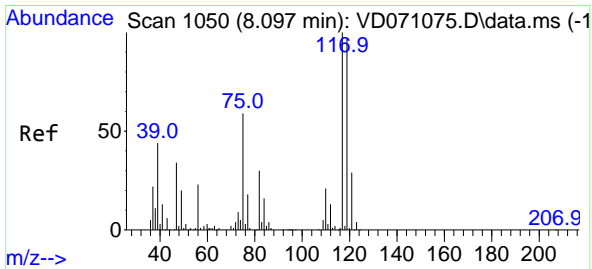
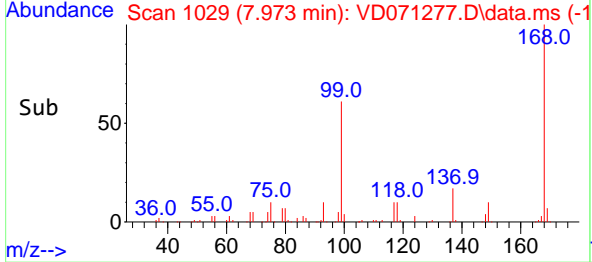
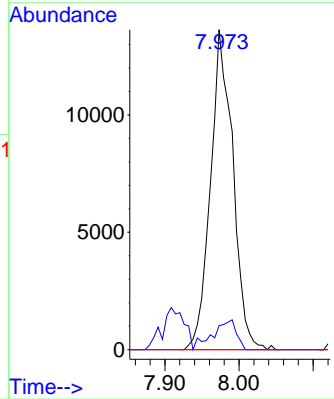


#36  
 1,1-Dichloropropene  
 Concen: 5.858 ug/l  
 RT: 7.973 min Scan# 1029  
 Delta R.T. -0.141 min  
 Lab File: VD071277.D  
 Acq: 11 Dec 2021 18:41

Instrument : MSVOA\_D  
 ClientSampleId :

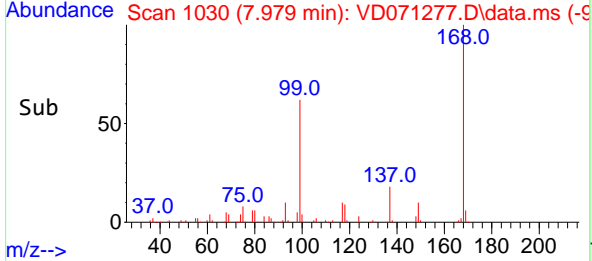
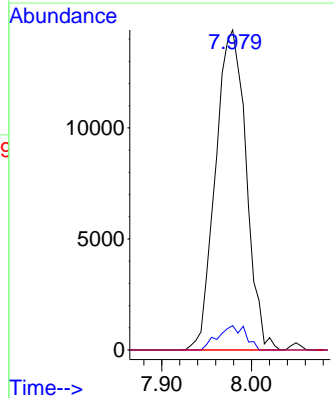
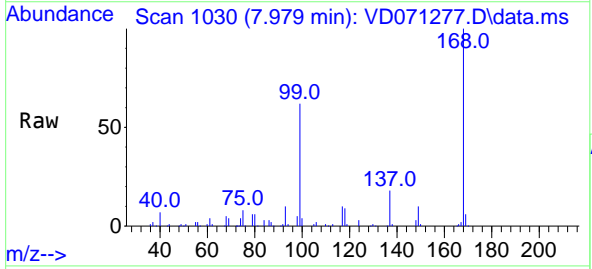


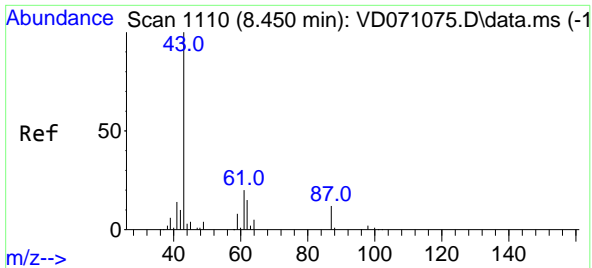
Tgt Ion: 75 Resp: 28655  
 Ion Ratio Lower Upper  
 75 100  
 110 8.7 17.8 53.4#  
 77 0.0 24.8 37.2#



#38  
 Carbon Tetrachloride  
 Concen: 7.079 ug/l  
 RT: 7.979 min Scan# 1030  
 Delta R.T. -0.118 min  
 Lab File: VD071277.D  
 Acq: 11 Dec 2021 18:41

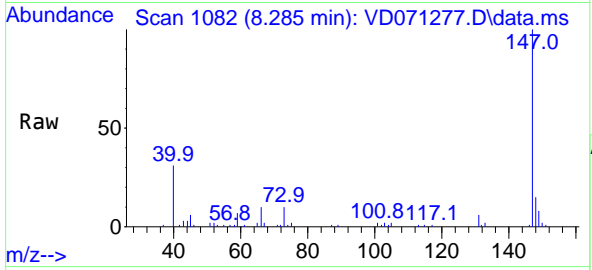
Tgt Ion: 117 Resp: 34136  
 Ion Ratio Lower Upper  
 117 100  
 119 7.6 75.8 113.6#  
 121 0.0 23.6 35.4#





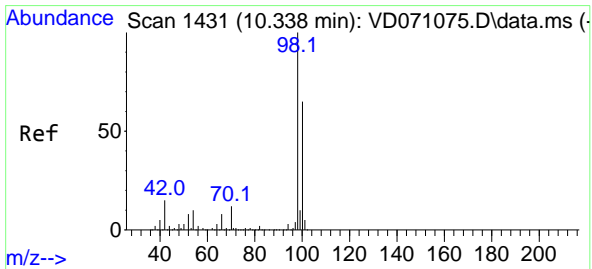
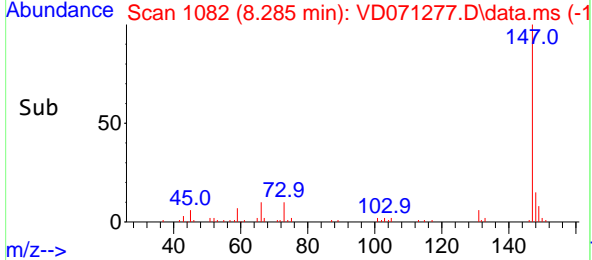
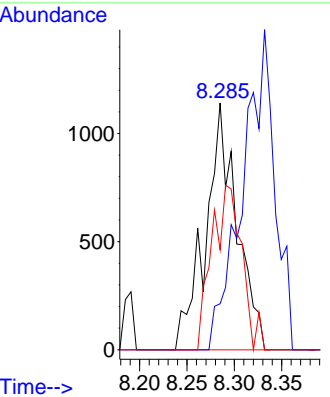
#43  
 Isopropyl Acetate  
 Concen: 5.728 ug/l  
 RT: 8.285 min Scan# 1082  
 Delta R.T. -0.165 min  
 Lab File: VD071277.D  
 Acq: 11 Dec 2021 18:41

Instrument : MSVOA\_D  
 ClientSampleId :



Tgt Ion: 43 Resp: 2621

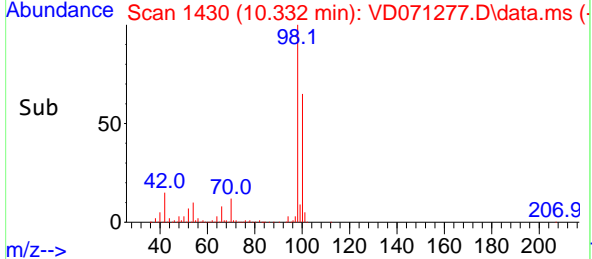
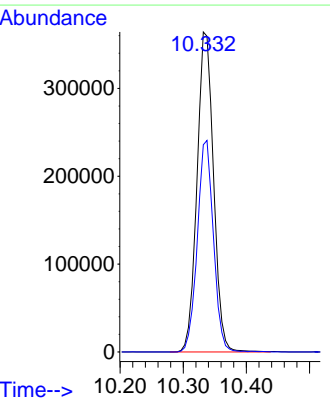
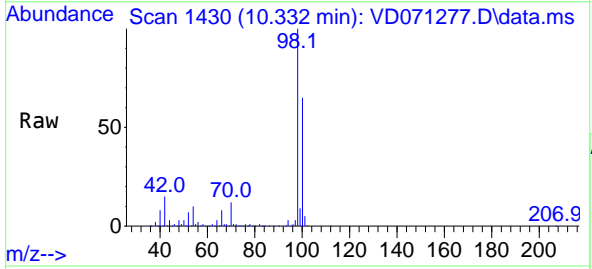
Ion	Ratio	Lower	Upper
43	100		
61	0.0	28.2	42.4#
87	63.6	10.7	16.1#

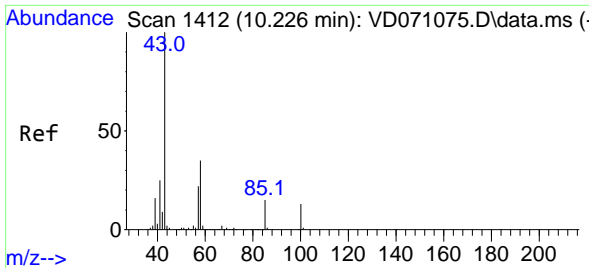


#50  
 Toluene-d8  
 Concen: 52.320 ug/l  
 RT: 10.332 min Scan# 1430  
 Delta R.T. -0.006 min  
 Lab File: VD071277.D  
 Acq: 11 Dec 2021 18:41

Tgt Ion: 98 Resp: 663604

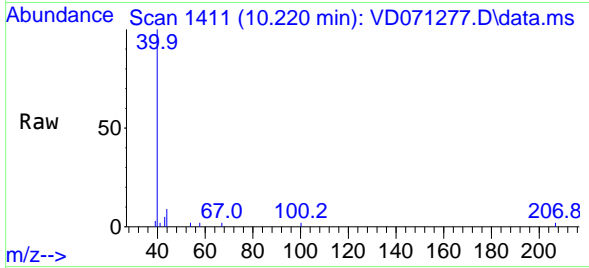
Ion	Ratio	Lower	Upper
98	100		
100	64.4	51.8	77.6



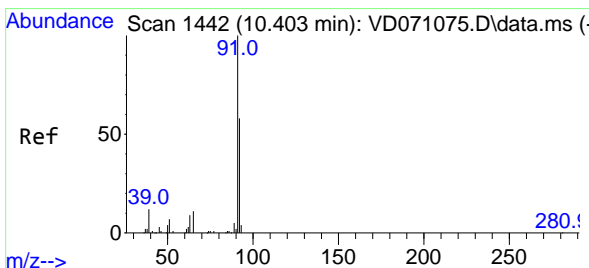
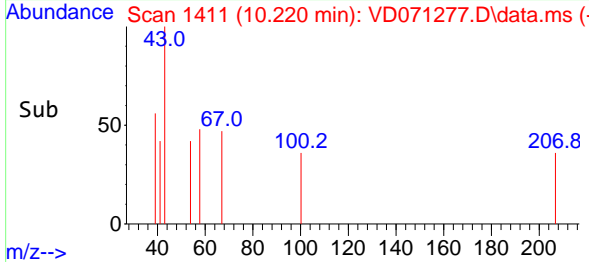
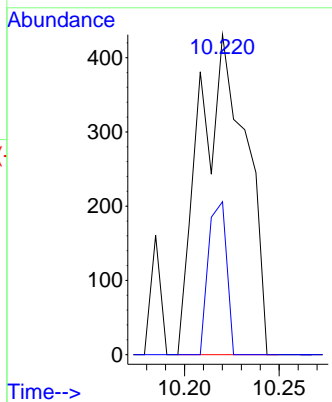


#51  
 4-Methyl-2-Pentanone  
 Concen: 30.924 ug/l  
 RT: 10.220 min Scan# 1411  
 Delta R.T. -0.006 min  
 Lab File: VD071277.D  
 Acq: 11 Dec 2021 18:41

Instrument : MSVOA\_D  
 ClientSampleId :

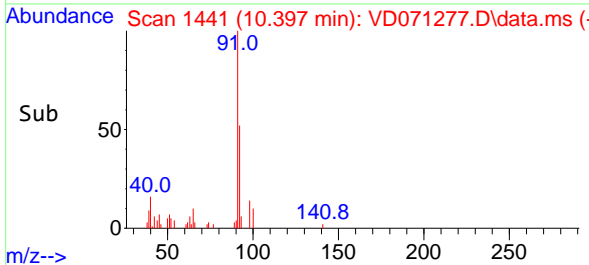
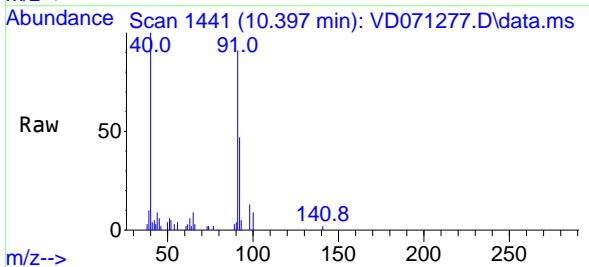
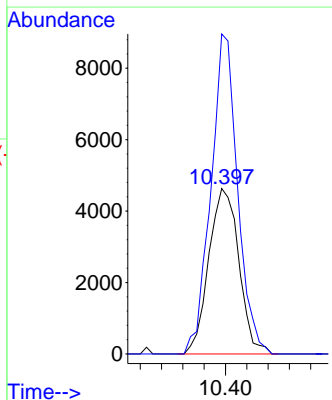


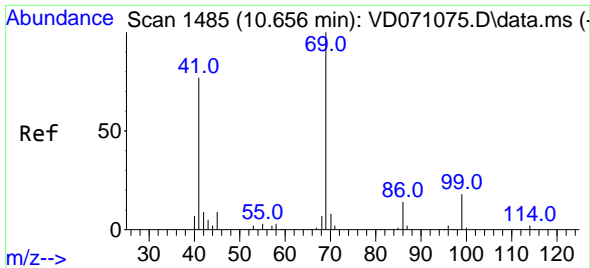
Tgt Ion: 43 Resp: 739  
 Ion Ratio Lower Upper  
 43 100  
 58 0.0 33.1 49.7#



#52  
 Toluene  
 Concen: 1.078 ug/l  
 RT: 10.397 min Scan# 1441  
 Delta R.T. -0.007 min  
 Lab File: VD071277.D  
 Acq: 11 Dec 2021 18:41

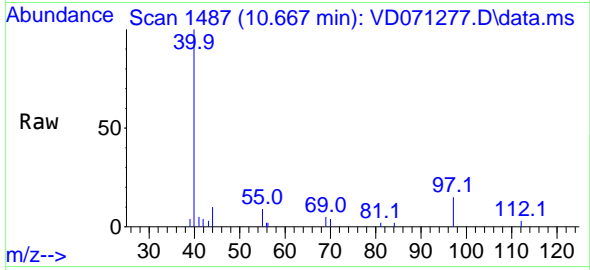
Tgt Ion: 92 Resp: 9091  
 Ion Ratio Lower Upper  
 92 100  
 91 171.5 140.7 211.1



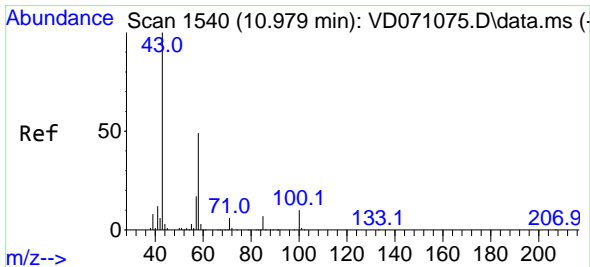
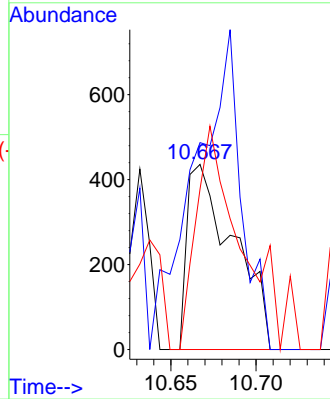
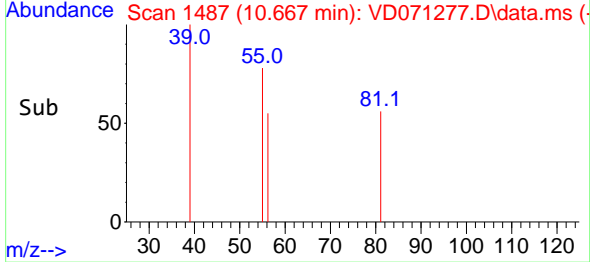


#56  
 Ethyl methacrylate  
 Concen: 6.182 ug/l  
 RT: 10.667 min Scan# 1485  
 Delta R.T. 0.011 min  
 Lab File: VD071277.D  
 Acq: 11 Dec 2021 18:41

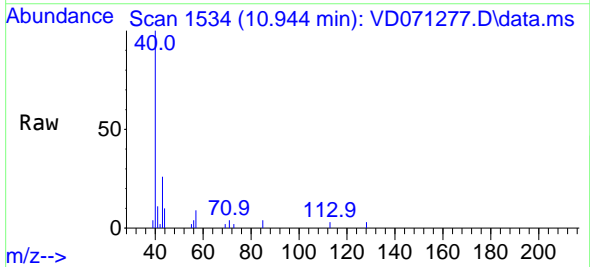
Instrument :  
 MSVOA\_D  
 ClientSampleId :



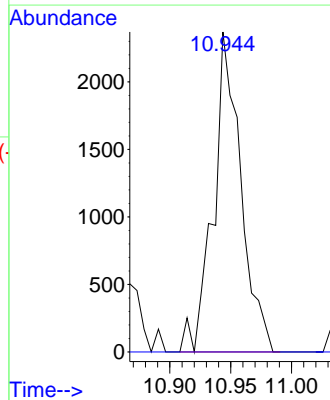
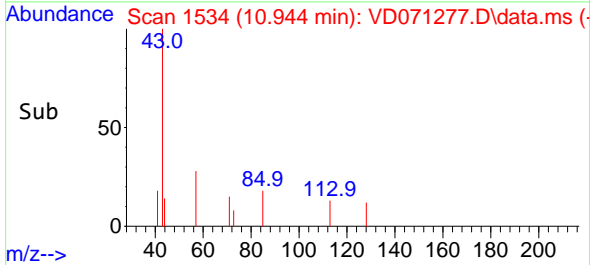
Tgt Ion: 69 Resp: 825  
 Ion Ratio Lower Upper  
 69 100  
 41 173.9 50.2 75.2#  
 39 120.7 19.8 29.8#

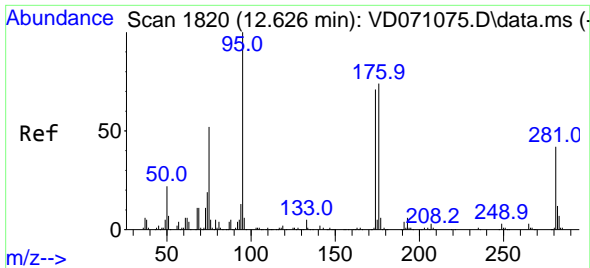


#59  
 2-Hexanone  
 Concen: 36.353 ug/l  
 RT: 10.944 min Scan# 1534  
 Delta R.T. -0.035 min  
 Lab File: VD071277.D  
 Acq: 11 Dec 2021 18:41



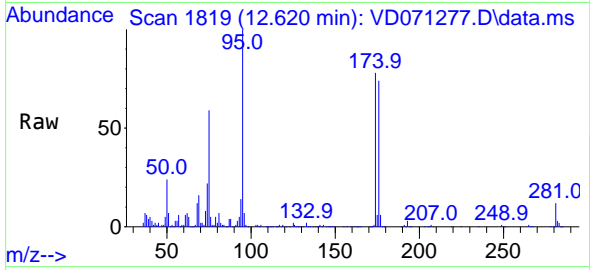
Tgt Ion: 43 Resp: 3706  
 Ion Ratio Lower Upper  
 43 100  
 58 0.0 28.7 86.1#



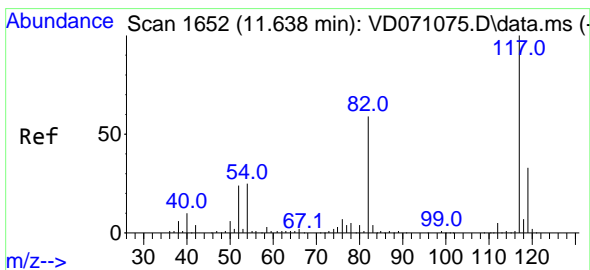
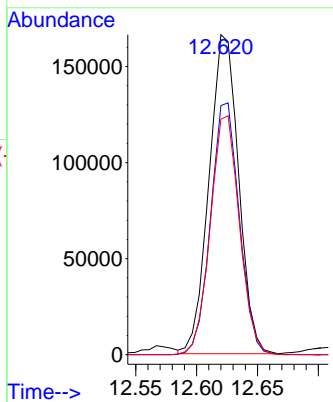
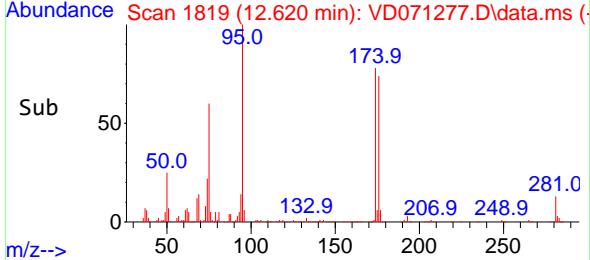


#62  
 4-Bromofluorobenzene  
 Concen: 63.678 ug/l  
 RT: 12.620 min Scan# 1819  
 Delta R.T. -0.006 min  
 Lab File: VD071277.D  
 Acq: 11 Dec 2021 18:41

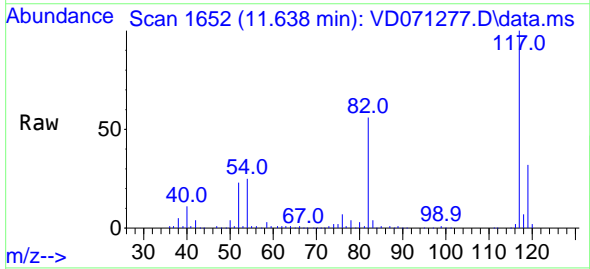
Instrument : MSVOA\_D  
 ClientSampleId :



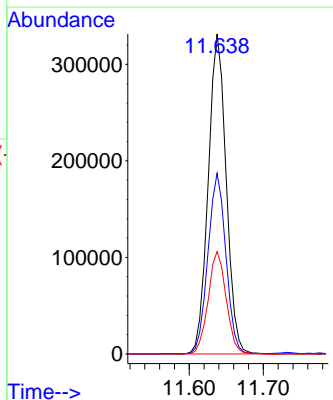
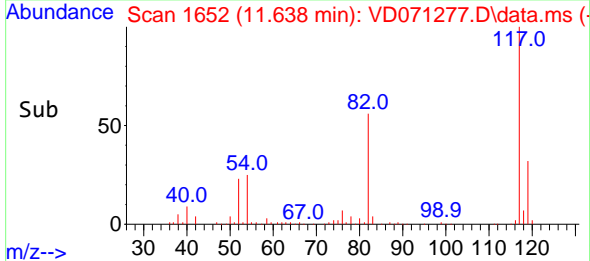
Tgt Ion: 95 Resp: 279965  
 Ion Ratio Lower Upper  
 95 100  
 174 76.7 0.0 159.4  
 176 73.7 0.0 154.0

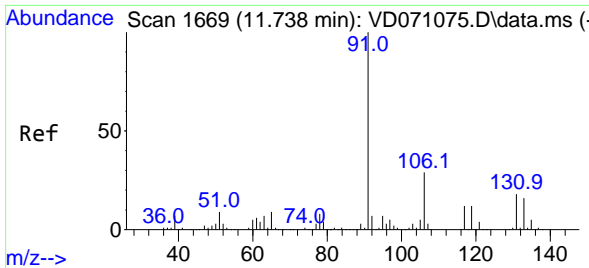


#63  
 Chlorobenzene-d5  
 Concen: 50.000 ug/l  
 RT: 11.638 min Scan# 1652  
 Delta R.T. -0.000 min  
 Lab File: VD071277.D  
 Acq: 11 Dec 2021 18:41



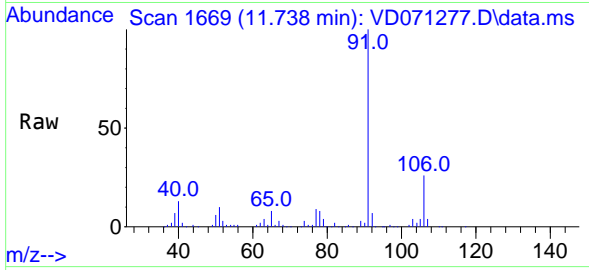
Tgt Ion: 117 Resp: 557915  
 Ion Ratio Lower Upper  
 117 100  
 82 56.3 44.7 67.1  
 119 32.0 26.2 39.4



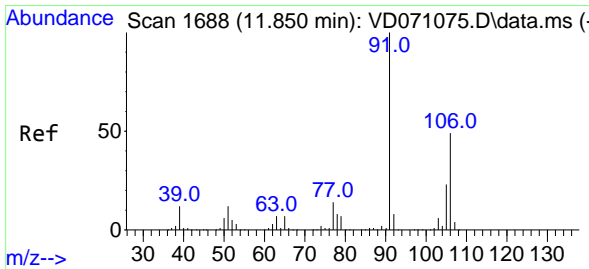
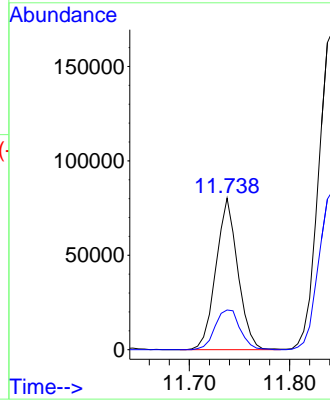
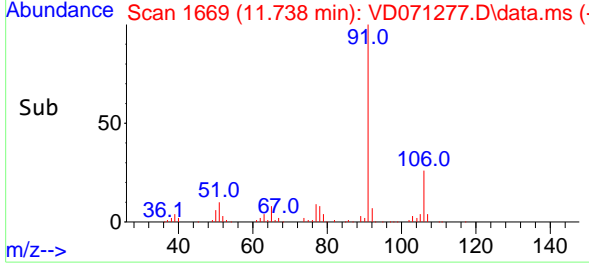


#67  
Ethyl Benzene  
Concen: 6.242 ug/l  
RT: 11.738 min Scan# 1669  
Delta R.T. -0.000 min  
Lab File: VD071277.D  
Acq: 11 Dec 2021 18:41

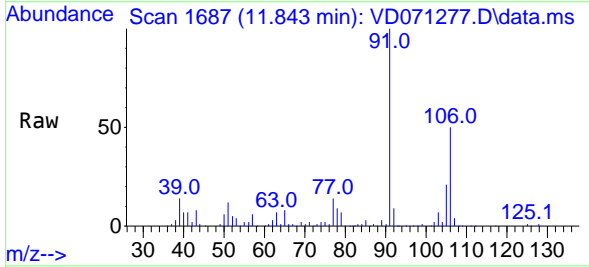
Instrument : MSVOA\_D  
ClientSampleId :



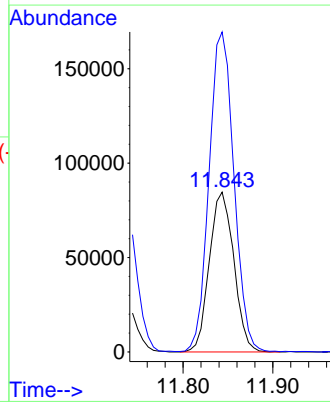
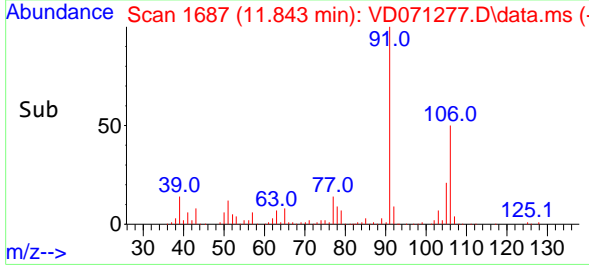
Tgt Ion: 91 Resp: 121649  
Ion Ratio Lower Upper  
91 100  
106 26.2 24.6 36.8

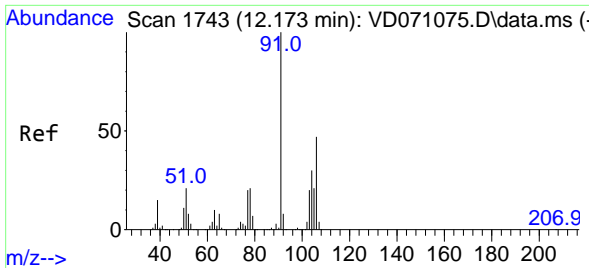


#68  
m/p-Xylenes  
Concen: 21.813 ug/l  
RT: 11.843 min Scan# 1687  
Delta R.T. -0.007 min  
Lab File: VD071277.D  
Acq: 11 Dec 2021 18:41



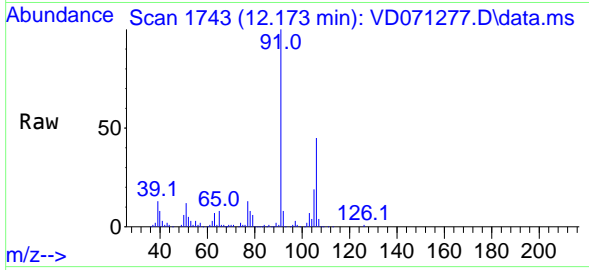
Tgt Ion: 106 Resp: 160481  
Ion Ratio Lower Upper  
106 100  
91 202.8 160.1 240.1



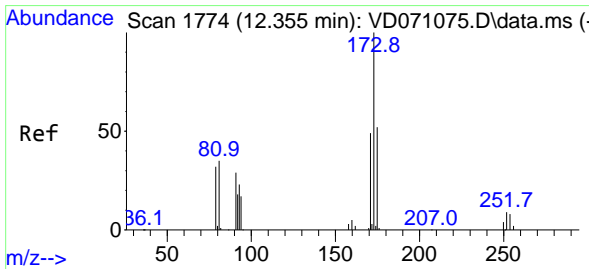
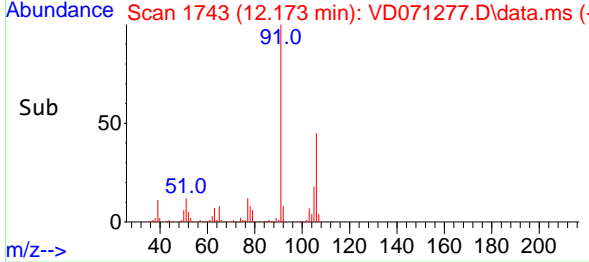
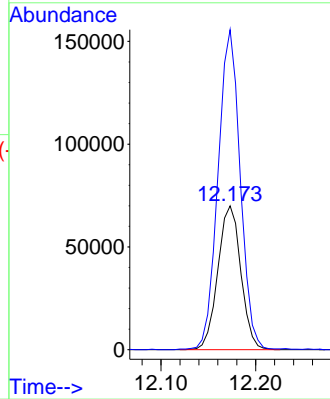


#69  
 o-Xylene  
 Concen: 17.078 ug/l  
 RT: 12.173 min Scan# 11  
 Delta R.T. -0.000 min  
 Lab File: VD071277.D  
 Acq: 11 Dec 2021 18:41

Instrument :  
 MSVOA\_D  
 ClientSampleId :

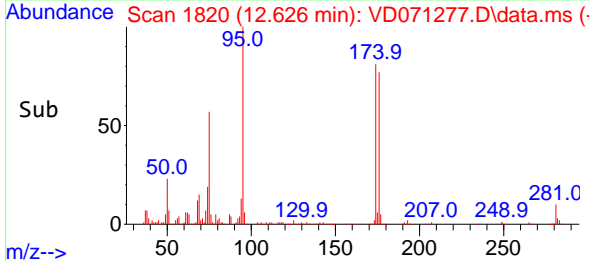
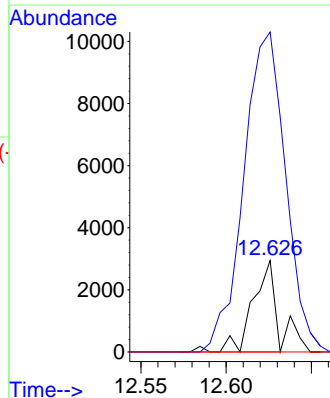
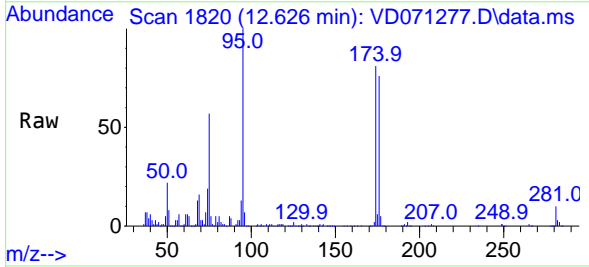


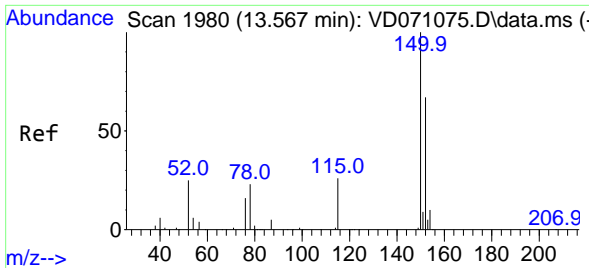
Tgt Ion:106 Resp: 118089  
 Ion Ratio Lower Upper  
 106 100  
 91 215.1 106.3 319.0



#71  
 Bromoform  
 Concen: 1.303 ug/l  
 RT: 12.626 min Scan# 1820  
 Delta R.T. 0.271 min  
 Lab File: VD071277.D  
 Acq: 11 Dec 2021 18:41

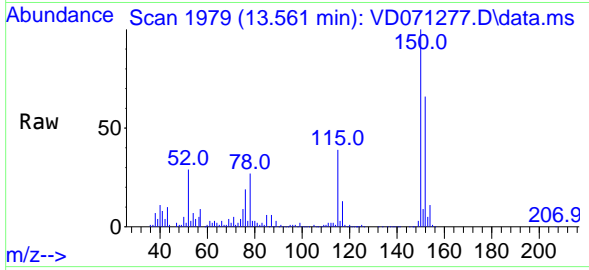
Tgt Ion:173 Resp: 2551  
 Ion Ratio Lower Upper  
 173 100  
 175 596.4 24.1 72.2#  
 254 0.0 0.1 0.1#



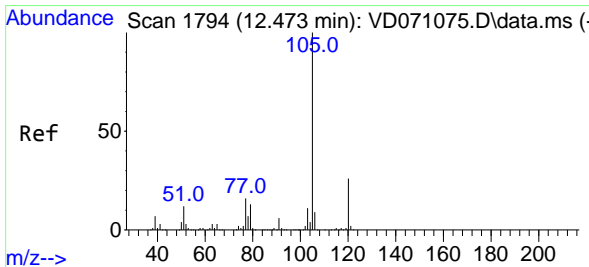
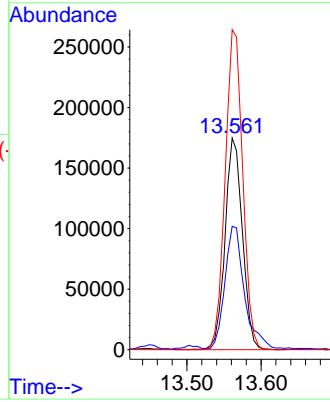
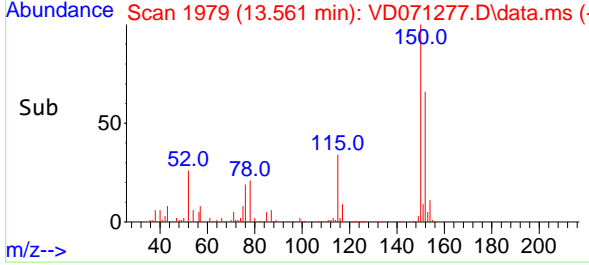


#72  
 1,4-Dichlorobenzene-d4  
 Concen: 50.000 ug/l  
 RT: 13.561 min Scan# 1980  
 Delta R.T. -0.006 min  
 Lab File: VD071277.D  
 Acq: 11 Dec 2021 18:41

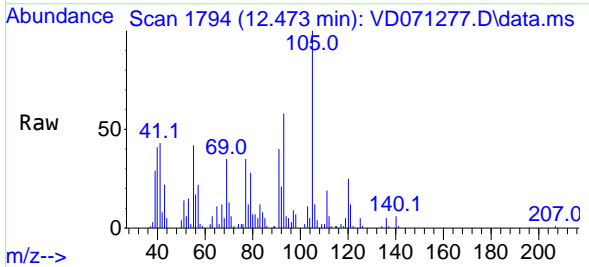
Instrument : MSVOA\_D  
 ClientSampleId :



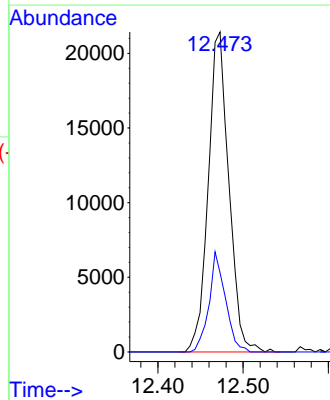
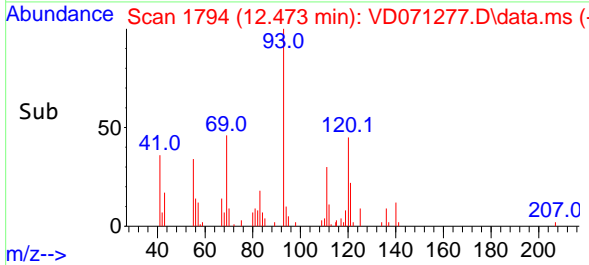
Tgt Ion:152 Resp: 284223  
 Ion Ratio Lower Upper  
 152 100  
 115 67.4 29.8 89.3  
 150 152.6 0.0 349.2



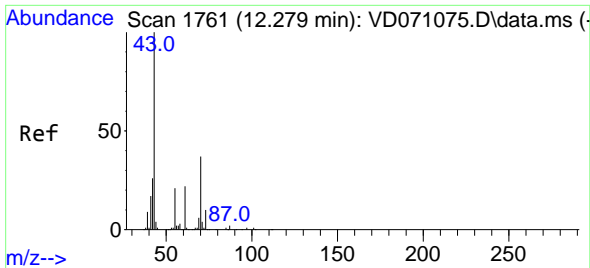
#73  
 Isopropylbenzene  
 Concen: 1.750 ug/l  
 RT: 12.473 min Scan# 1794  
 Delta R.T. -0.000 min  
 Lab File: VD071277.D  
 Acq: 11 Dec 2021 18:41



Tgt Ion:105 Resp: 36010  
 Ion Ratio Lower Upper  
 105 100  
 120 24.9 13.2 39.5

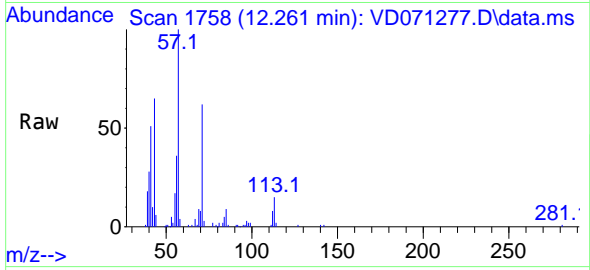






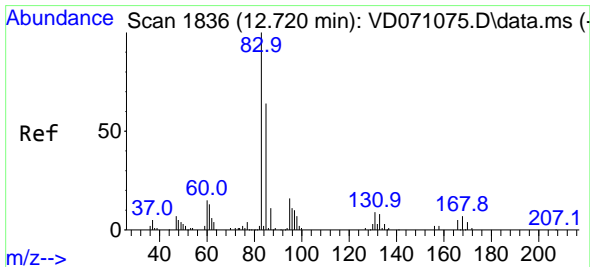
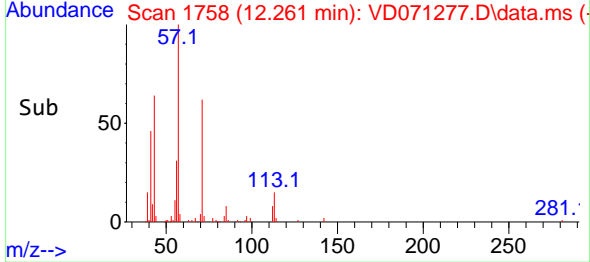
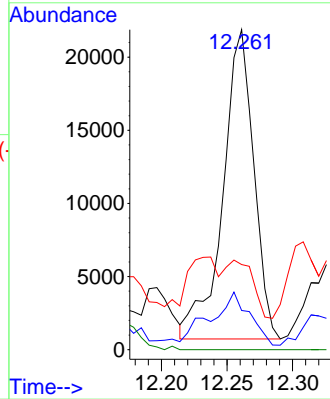
#74  
 N-amy1 acetate  
 Concen: 11.148 ug/l  
 RT: 12.261 min Scan# 1  
 Delta R.T. -0.018 min  
 Lab File: VD071277.D  
 Acq: 11 Dec 2021 18:41

Instrument :  
 MSVOA\_D  
 ClientSampleId :

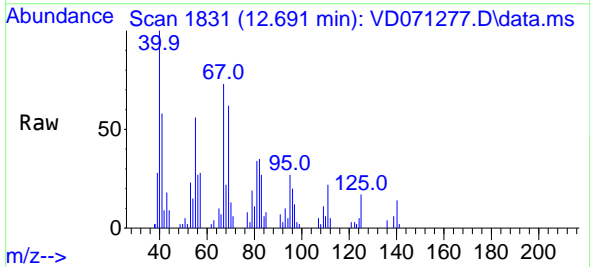


Tgt Ion: 43 Resp: 34639

Ion	Ratio	Lower	Upper
43	100		
70	22.2	36.6	55.0#
55	0.0	22.5	33.7#
61	0.0	20.5	30.7#

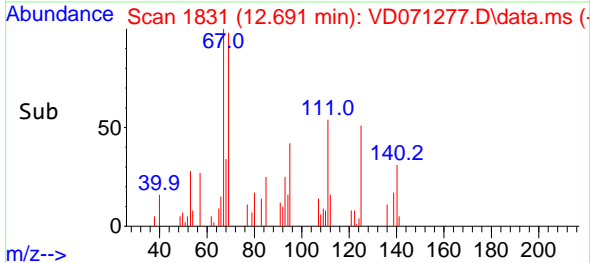
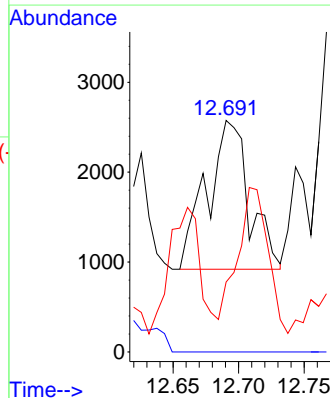


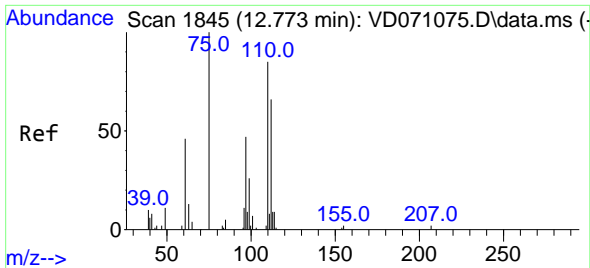
#75  
 1,1,2,2-Tetrachloroethane  
 Concen: 1.095 ug/l  
 RT: 12.691 min Scan# 1831  
 Delta R.T. -0.030 min  
 Lab File: VD071277.D  
 Acq: 11 Dec 2021 18:41



Tgt Ion: 83 Resp: 3712

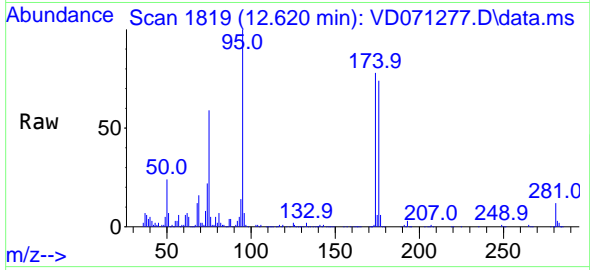
Ion	Ratio	Lower	Upper
83	100		
131	0.0	4.9	14.7#
85	70.7	32.0	96.2



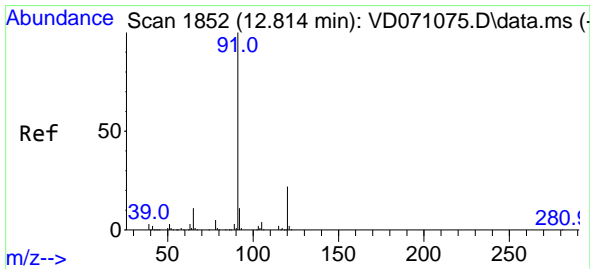
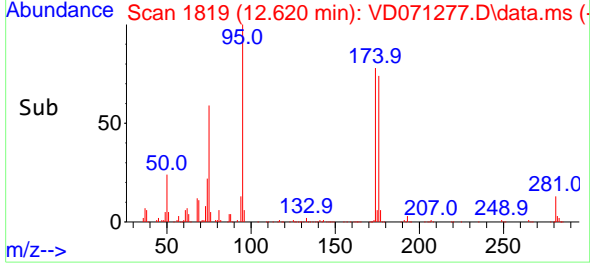
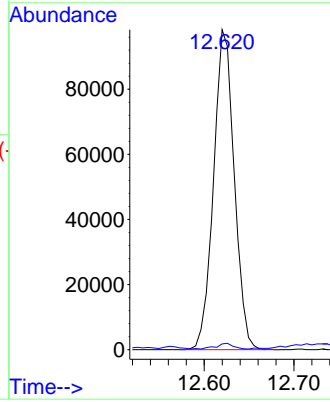


#76  
 1,2,3-Trichloropropane  
 Concen: 58.084 ug/l  
 RT: 12.620 min Scan# 1819  
 Delta R.T. -0.153 min  
 Lab File: VD071277.D  
 Acq: 11 Dec 2021 18:41

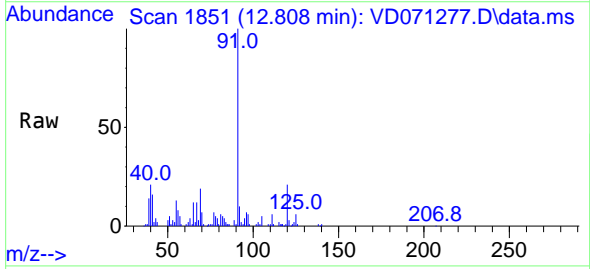
Instrument : MSVOA\_D  
 ClientSampleId :



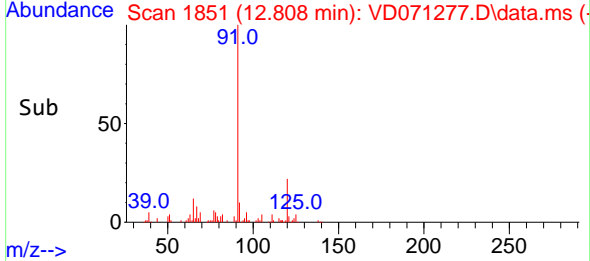
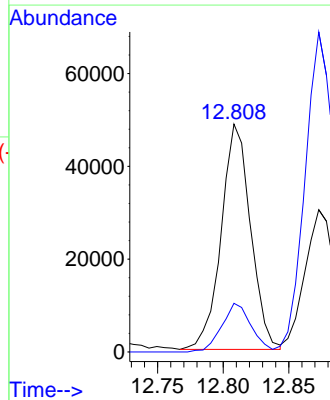
Tgt Ion: 75 Resp: 157289  
 Ion Ratio Lower Upper  
 75 100  
 77 1.5 158.4 475.3#

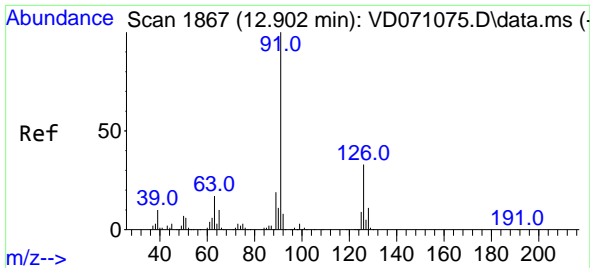


#78  
 n-propylbenzene  
 Concen: 2.959 ug/l  
 RT: 12.808 min Scan# 1851  
 Delta R.T. -0.006 min  
 Lab File: VD071277.D  
 Acq: 11 Dec 2021 18:41



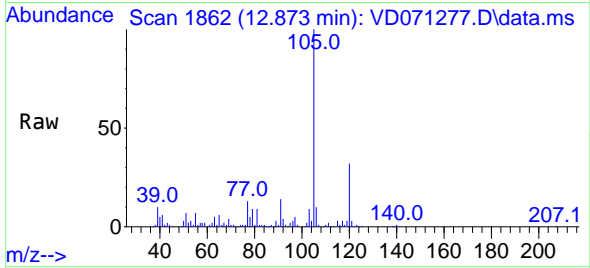
Tgt Ion: 91 Resp: 75825  
 Ion Ratio Lower Upper  
 91 100  
 120 21.6 10.9 32.9



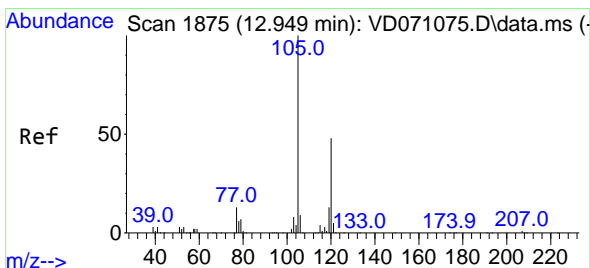
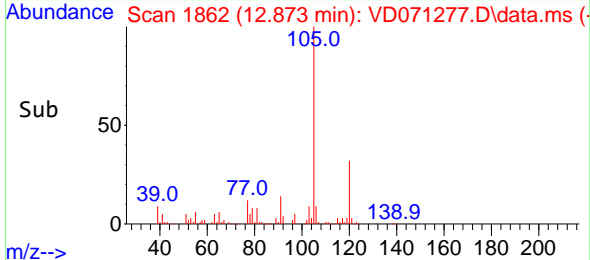
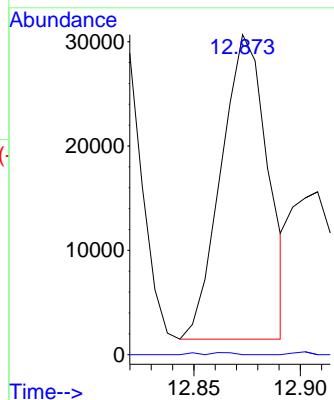


#79  
 2-Chlorotoluene  
 Concen: 3.099 ug/l  
 RT: 12.873 min Scan# 1862  
 Delta R.T. -0.029 min  
 Lab File: VD071277.D  
 Acq: 11 Dec 2021 18:41

Instrument : MSVOA\_D  
 ClientSampleId :

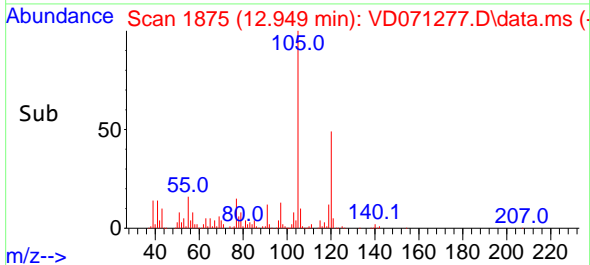
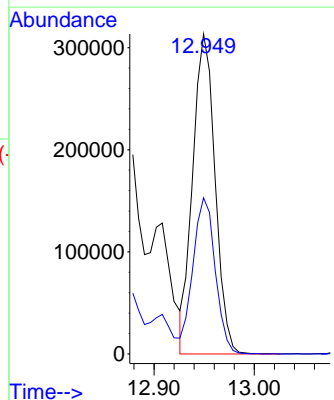
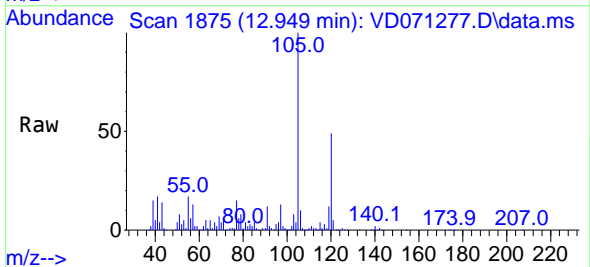


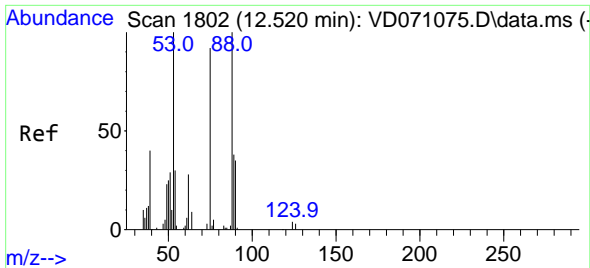
Tgt Ion: 91 Resp: 44583  
 Ion Ratio Lower Upper  
 91 100  
 126 0.4 16.6 49.7#



#80  
 1,3,5-Trimethylbenzene  
 Concen: 28.620 ug/l  
 RT: 12.949 min Scan# 1875  
 Delta R.T. 0.000 min  
 Lab File: VD071277.D  
 Acq: 11 Dec 2021 18:41

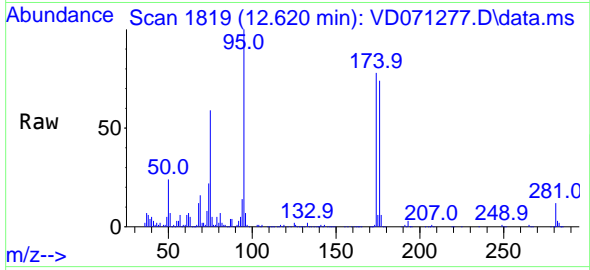
Tgt Ion: 105 Resp: 485701  
 Ion Ratio Lower Upper  
 105 100  
 120 48.7 24.6 73.8



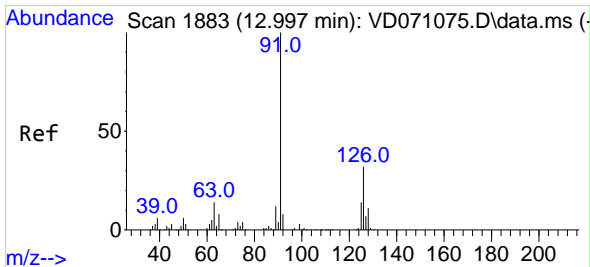
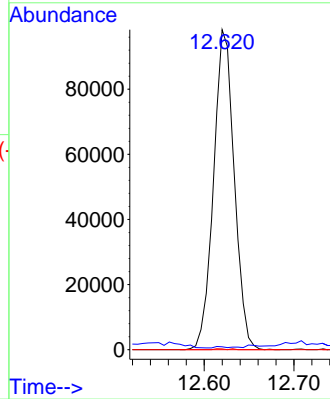
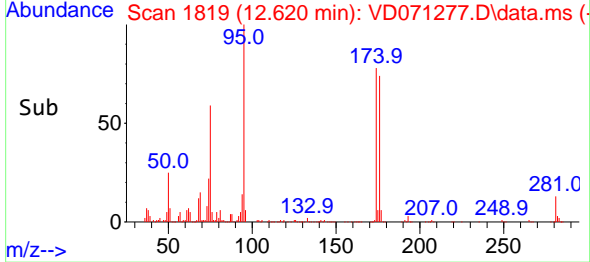


#81  
 trans-1,4-Dichloro-2-butene  
 Concen: 125.941 ug/l  
 RT: 12.620 min Scan# 1819  
 Delta R.T. 0.100 min  
 Lab File: VD071277.D  
 Acq: 11 Dec 2021 18:41

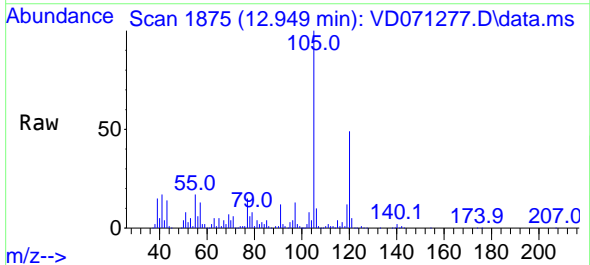
Instrument :  
 MSVOA\_D  
 ClientSampleId :



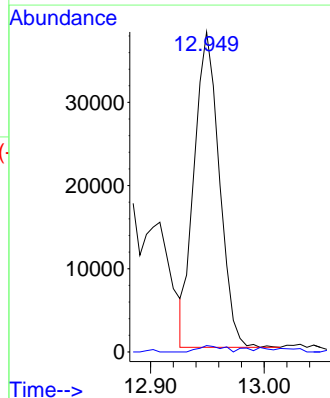
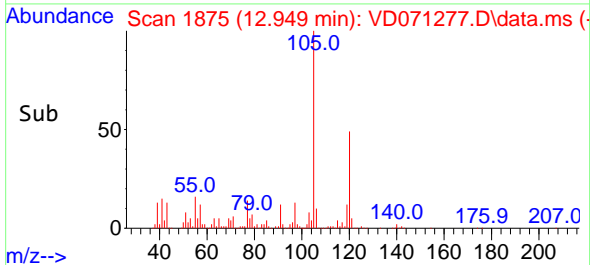
Tgt Ion: 75 Resp: 157289  
 Ion Ratio Lower Upper  
 75 100  
 53 0.2 62.6 94.0#  
 89 0.1 34.5 51.7#

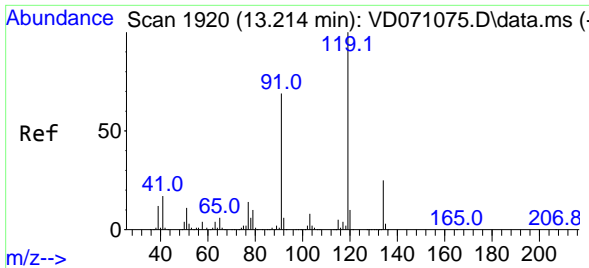


#82  
 4-Chlorotoluene  
 Concen: 3.891 ug/l  
 RT: 12.949 min Scan# 1875  
 Delta R.T. -0.048 min  
 Lab File: VD071277.D  
 Acq: 11 Dec 2021 18:41



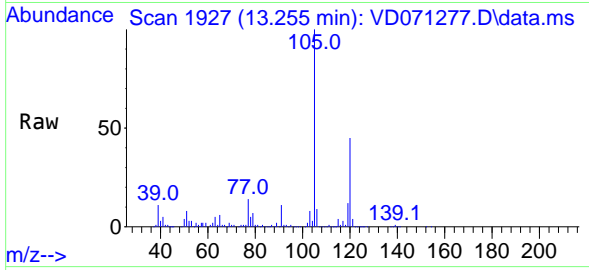
Tgt Ion: 91 Resp: 58099  
 Ion Ratio Lower Upper  
 91 100  
 126 1.9 16.4 49.1#



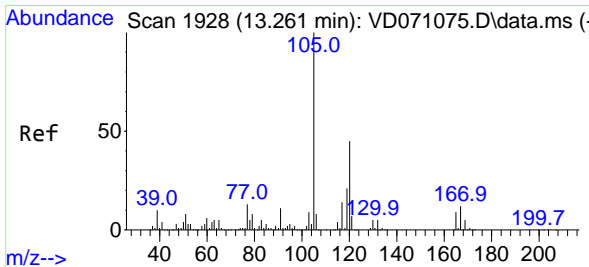
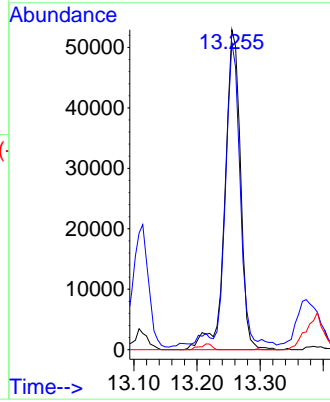
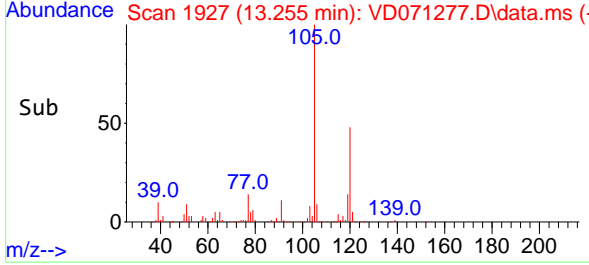


#83  
 tert-Butylbenzene  
 Concen: 6.214 ug/l  
 RT: 13.255 min Scan# 1927  
 Delta R.T. 0.041 min  
 Lab File: VD071277.D  
 Acq: 11 Dec 2021 18:41

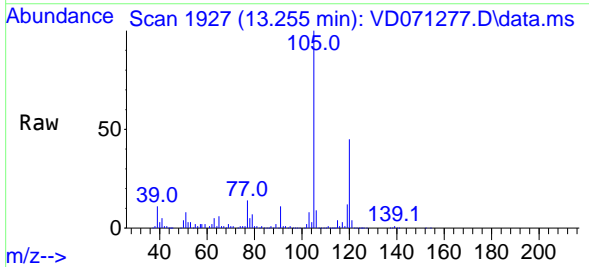
Instrument : MSVOA\_D  
 ClientSampleId :



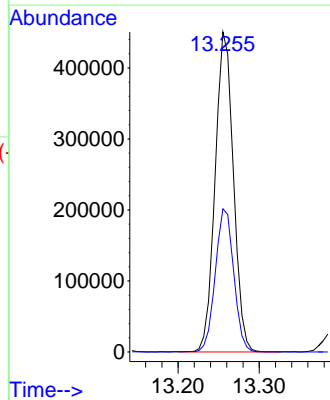
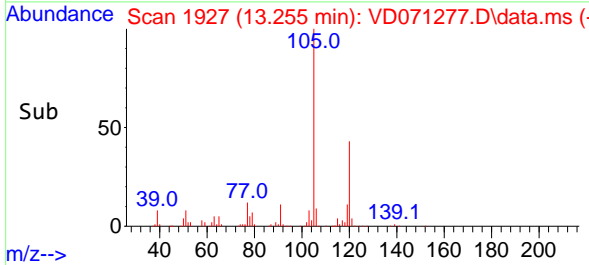
Tgt Ion:119 Resp: 90568  
 Ion Ratio Lower Upper  
 119 100  
 91 86.3 32.5 97.5  
 134 0.0 13.2 39.6#

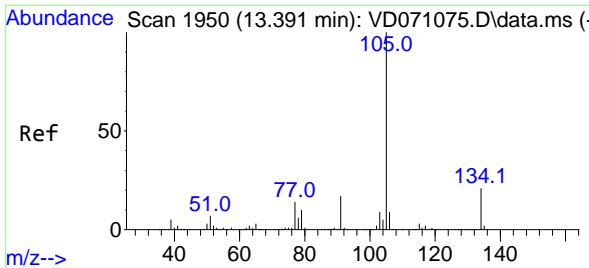


#84  
 1,2,4-Trimethylbenzene  
 Concen: 42.634 ug/l  
 RT: 13.255 min Scan# 1927  
 Delta R.T. -0.006 min  
 Lab File: VD071277.D  
 Acq: 11 Dec 2021 18:41



Tgt Ion:105 Resp: 706383  
 Ion Ratio Lower Upper  
 105 100  
 120 45.2 22.9 68.7

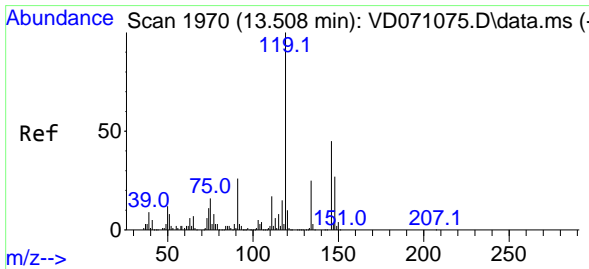
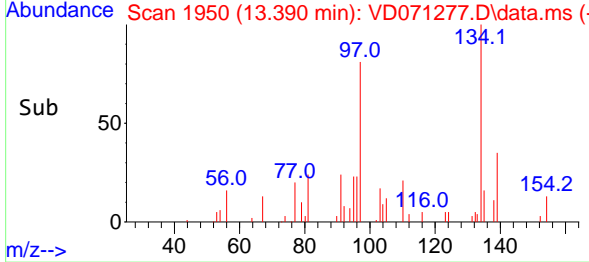
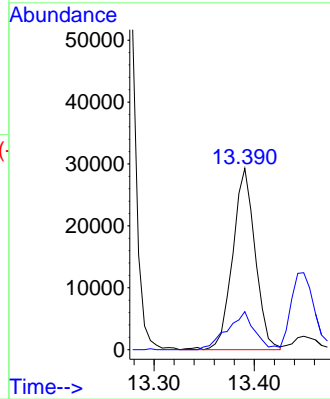
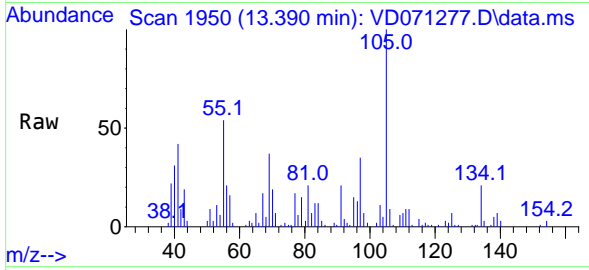




#85  
 sec-Butylbenzene  
 Concen: 2.045 ug/l  
 RT: 13.390 min Scan# 1950  
 Delta R.T. -0.001 min  
 Lab File: VD071277.D  
 Acq: 11 Dec 2021 18:41

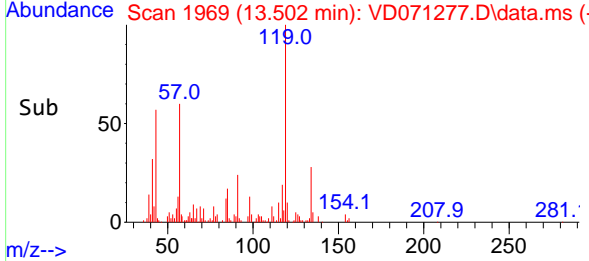
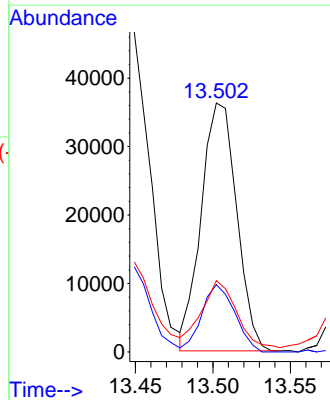
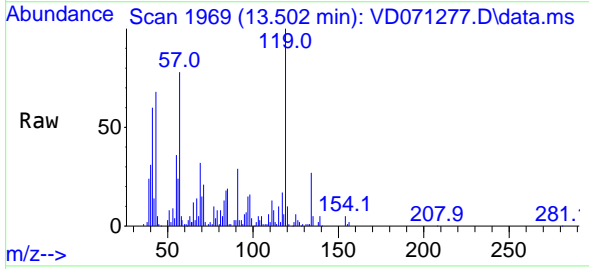
Instrument : MSVOA\_D  
 ClientSampleId :

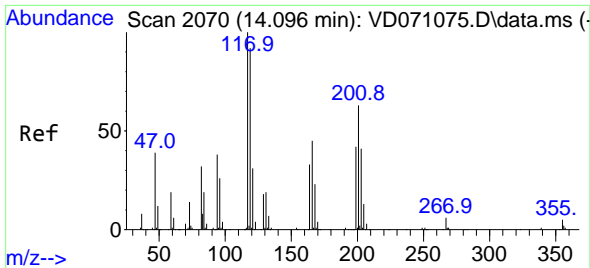
Tgt Ion:105 Resp: 45512  
 Ion Ratio Lower Upper  
 105 100  
 134 25.0 9.7 28.9



#86  
 p-Isopropyltoluene  
 Concen: 3.169 ug/l  
 RT: 13.502 min Scan# 1969  
 Delta R.T. -0.006 min  
 Lab File: VD071277.D  
 Acq: 11 Dec 2021 18:41

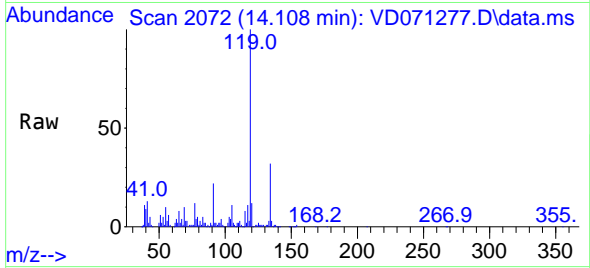
Tgt Ion:119 Resp: 57694  
 Ion Ratio Lower Upper  
 119 100  
 134 25.3 13.0 38.9  
 91 26.3 11.4 34.2



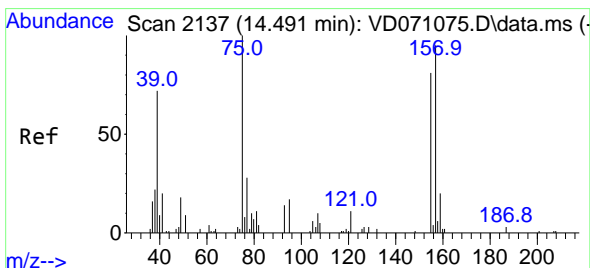
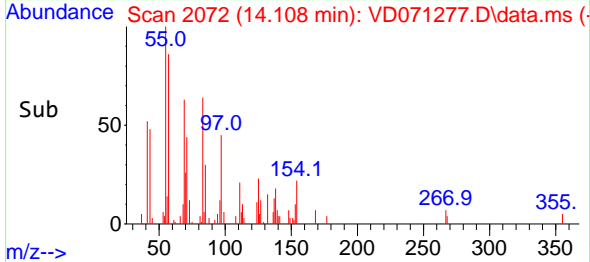
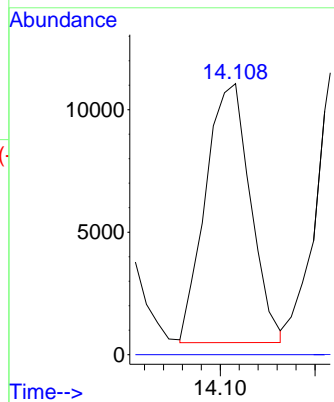


#90  
 Hexachloroethane  
 Concen: 5.039 ug/l  
 RT: 14.108 min Scan# 2070  
 Delta R.T. 0.012 min  
 Lab File: VD071277.D  
 Acq: 11 Dec 2021 18:41

Instrument : MSVOA\_D  
 ClientSampleId :

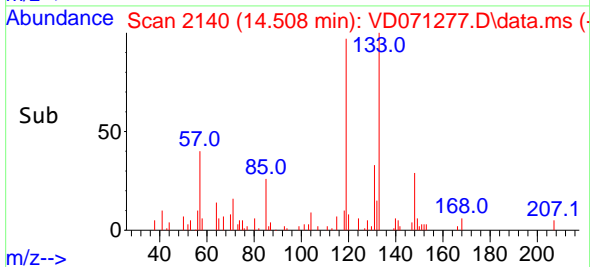
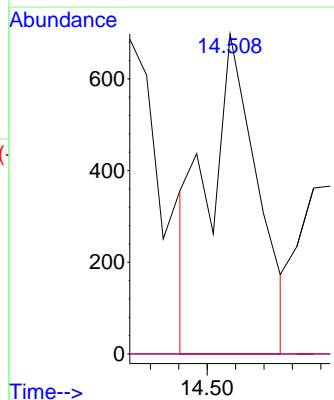
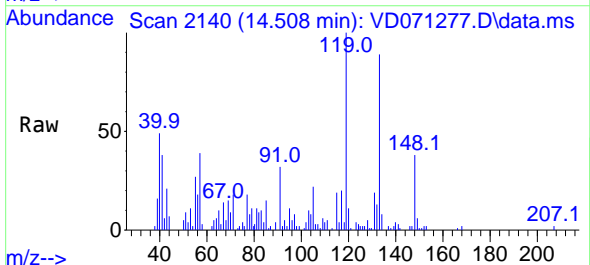


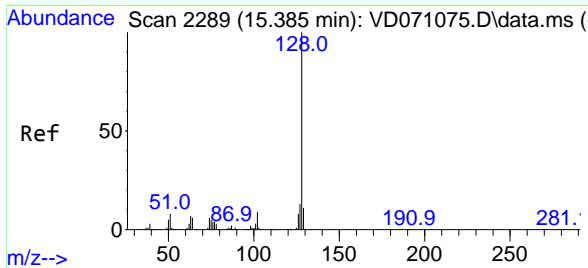
Tgt Ion:117 Resp: 17391  
 Ion Ratio Lower Upper  
 117 100  
 201 0.0 36.0 108.1#



#92  
 1,2-Dibromo-3-Chloropropane  
 Concen: 1.522 ug/l  
 RT: 14.508 min Scan# 2140  
 Delta R.T. 0.017 min  
 Lab File: VD071277.D  
 Acq: 11 Dec 2021 18:41

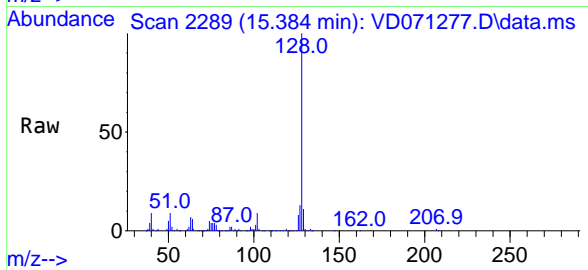
Tgt Ion: 75 Resp: 840  
 Ion Ratio Lower Upper  
 75 100  
 155 0.0 40.0 120.0#  
 157 0.0 49.8 149.3#





#95  
 Naphthalene  
 Concen: 30.685 ug/l  
 RT: 15.384 min Scan# 21  
 Delta R.T. -0.001 min  
 Lab File: VD071277.D  
 Acq: 11 Dec 2021 18:41

Instrument :  
 MSVOA\_D  
 ClientSampleId :



Tgt Ion:128 Resp: 254617

Ion	Ratio	Lower	Upper
128	100		
127	13.5	10.7	16.1
129	10.9	8.7	13.1

