

Data Path : Z:\voasrv\HPCHEM1\MSVOA_D\Data\VD121223\
 Data File : VD077827.D
 Acq On : 11 Dec 2023 22:25
 Operator : JC/SY
 Sample : 05740-01
 Misc : 5.00G/5.0ml/MSVOA_D/SOIL
 ALS Vial : 20 Sample Multiplier: 1

Instrument :
 MSVOA_D
 ClientSampleId :
 CHRT-24328

Quant Time: Dec 12 00:53:54 2023
 Quant Method : Z:\voasrv\HPCHEM1\MSVOA_D\Method\82D120823S.M
 Quant Title : SW846 8260
 QLast Update : Fri Dec 08 13:33:18 2023
 Response via : Initial Calibration

Compound	R.T.	QIon	Response	Conc	Units	Dev(Min)

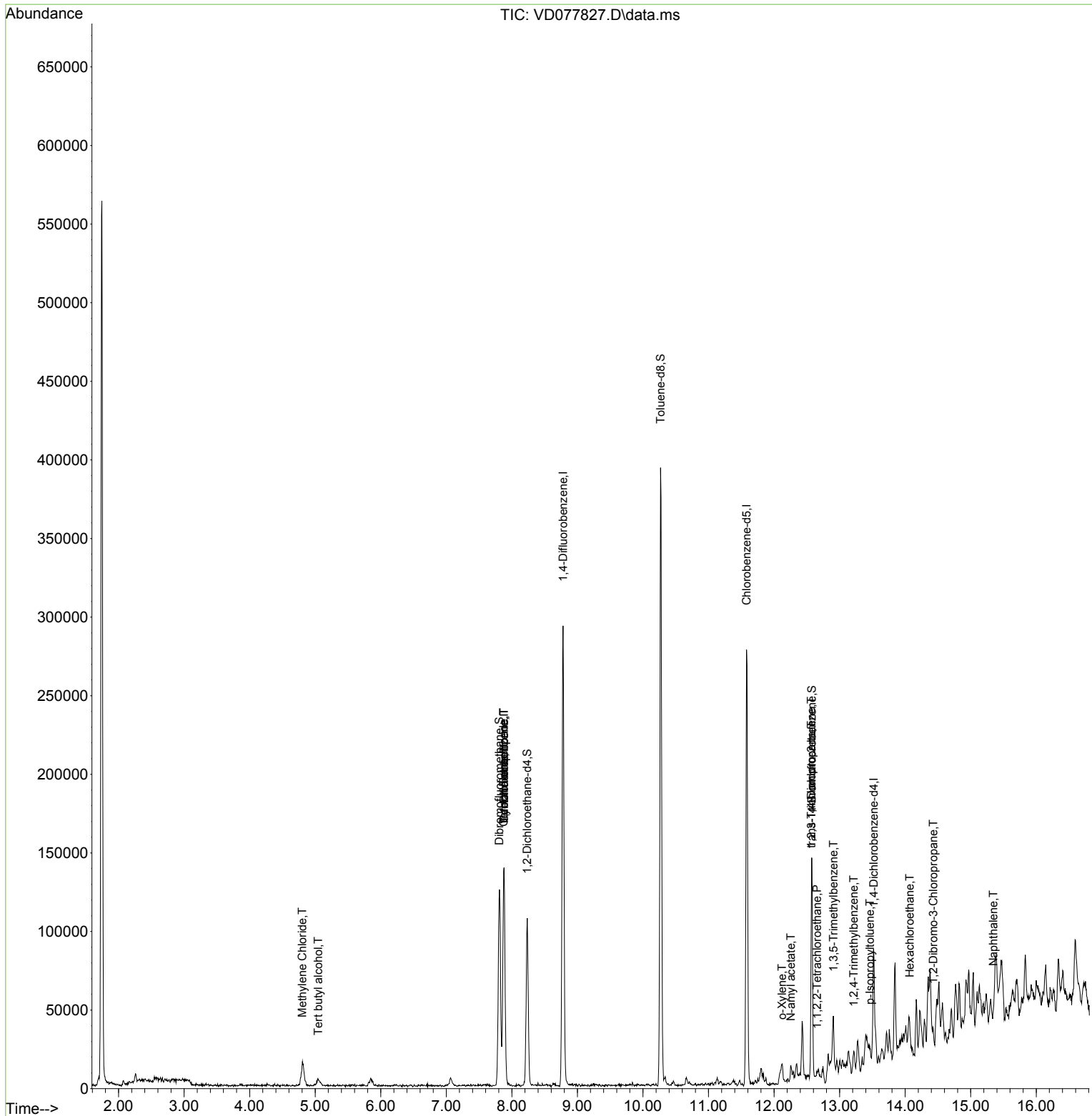
Internal Standards						
1) Pentafluorobenzene	7.881	168	110266	50.000	ug/l	0.00
34) 1,4-Difluorobenzene	8.781	114	257766	50.000	ug/l	0.00
63) Chlorobenzene-d5	11.581	117	165826	50.000	ug/l	0.00
72) 1,4-Dichlorobenzene-d4	13.522	152	20305	50.000	ug/l	0.00
System Monitoring Compounds						
33) 1,2-Dichloroethane-d4	8.234	65	77811	59.886	ug/l	0.00
Spiked Amount	50.000	Range	50 - 163	Recovery	=	119.780%
35) Dibromofluoromethane	7.810	113	92079	50.997	ug/l	0.00
Spiked Amount	50.000	Range	54 - 147	Recovery	=	102.000%
50) Toluene-d8	10.269	98	274417	37.947	ug/l	0.00
Spiked Amount	50.000	Range	58 - 134	Recovery	=	75.900%
62) 4-Bromofluorobenzene	12.575	95	40491	18.728	ug/l	0.00
Spiked Amount	50.000	Range	30 - 143	Recovery	=	37.460%
Target Compounds						
						Qvalue
11) Tert butyl alcohol	5.046	59	8045	122.842	ug/l #	89
16) Acetone	4.017	43	289	Below Cal	#	32
20) Methylene Chloride	4.805	84	10827	2.427	ug/l #	84
25) 2-Butanone	7.093	43	135	Below Cal	#	37
31) Cyclohexane	7.881	56	2563	1.109	ug/l #	41
36) 1,1-Dichloropropene	7.881	75	8289	2.870	ug/l #	45
38) Carbon Tetrachloride	7.875	117	10071	3.498	ug/l #	15
65) Chlorobenzene	11.616	112	415	Below Cal	#	43
69) o-Xylene	12.122	106	2921	1.200	ug/l	97
74) N-amyl acetate	12.257	43	789	2.608	ug/l #	1
75) 1,1,2,2-Tetrachloroethane	12.657	83	769	2.866	ug/l #	52
76) 1,2,3-Trichloropropane	12.569	75	20960	118.855	ug/l #	100
80) 1,3,5-Trimethylbenzene	12.904	105	6345	4.943	ug/l	99
81) trans-1,4-Dichloro-2-b...	12.569	75	20960	240.808	ug/l #	17
84) 1,2,4-Trimethylbenzene	13.216	105	6599	5.140	ug/l	98
86) p-Isopropyltoluene	13.463	119	5667	3.952	ug/l	89
88) 1,4-Dichlorobenzene	13.528	146	315	Below Cal	#	1
90) Hexachloroethane	14.069	117	958	3.632	ug/l #	11
92) 1,2-Dibromo-3-Chloropr...	14.428	75	78	1.047	ug/l #	1
95) Naphthalene	15.345	128	1224	1.713	ug/l #	63

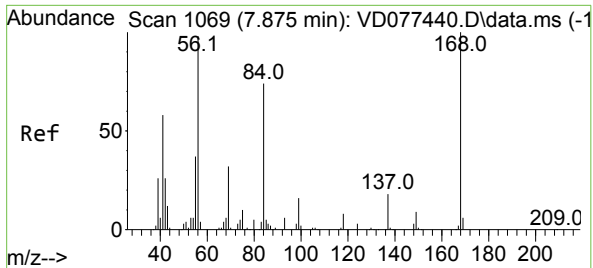
(#) = qualifier out of range (m) = manual integration (+) = signals summed

Data Path : Z:\voasrv\HPCHEM1\MSVOA_D\Data\VD121223\
 Data File : VD077827.D
 Acq On : 11 Dec 2023 22:25
 Operator : JC/SY
 Sample : 05740-01
 Misc : 5.00G/5.0ml/MSVOA_D/SOIL
 ALS Vial : 20 Sample Multiplier: 1

Instrument :
 MSVOA_D
 ClientSampleId :
 CHRT-24328

Quant Time: Dec 12 00:53:54 2023
 Quant Method : Z:\voasrv\HPCHEM1\MSVOA_D\Method\82D120823S.M
 Quant Title : SW846 8260
 QLast Update : Fri Dec 08 13:33:18 2023
 Response via : Initial Calibration

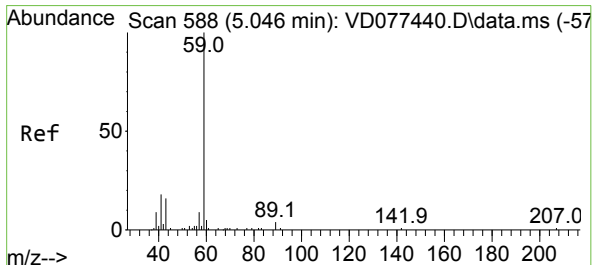
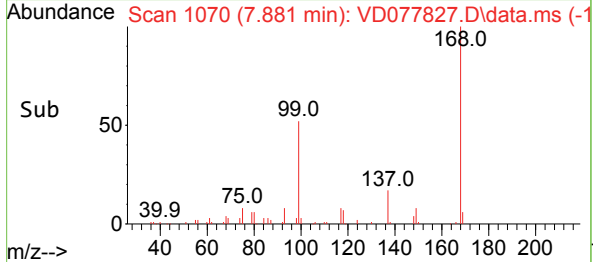
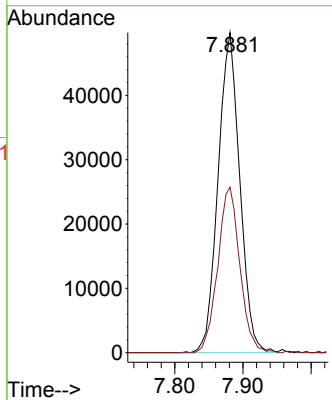
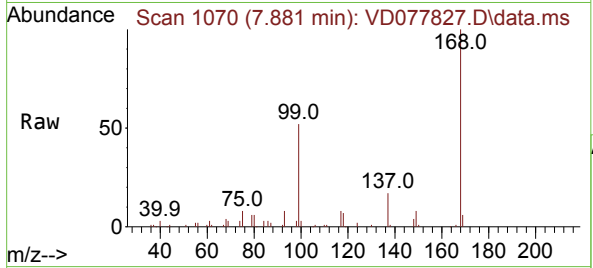




#1
 Pentafluorobenzene
 Concen: 50.000 ug/l
 RT: 7.881 min Scan# 1069
 Delta R.T. 0.006 min
 Lab File: VD077827.D
 Acq: 11 Dec 2023 22:25

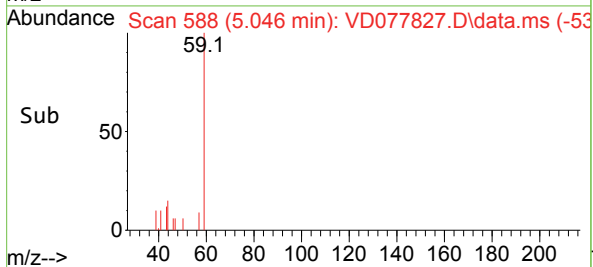
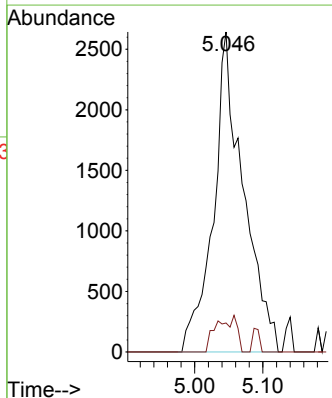
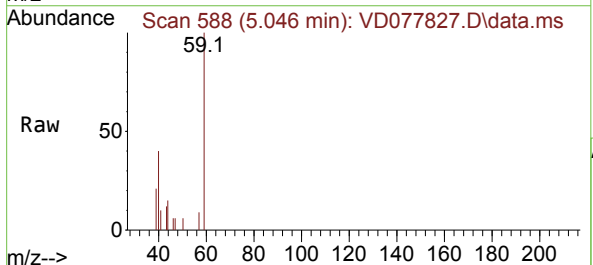
Instrument : MSVOA_D
 ClientSampleId : VD077827.D
 CHRT-24328

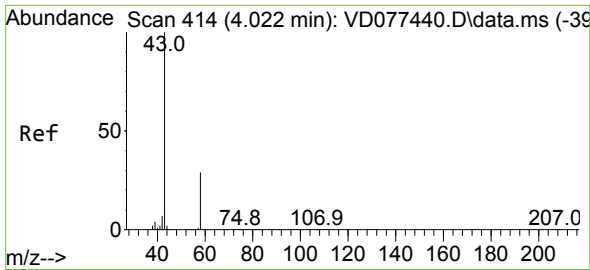
Tgt Ion:168 Resp: 110266
 Ion Ratio Lower Upper
 168 100
 99 51.7 36.7 55.1



#11
 Tert butyl alcohol
 Concen: 122.842 ug/l
 RT: 5.046 min Scan# 588
 Delta R.T. -0.000 min
 Lab File: VD077827.D
 Acq: 11 Dec 2023 22:25

Tgt Ion: 59 Resp: 8045
 Ion Ratio Lower Upper
 59 100
 57 5.6 7.8 11.8#

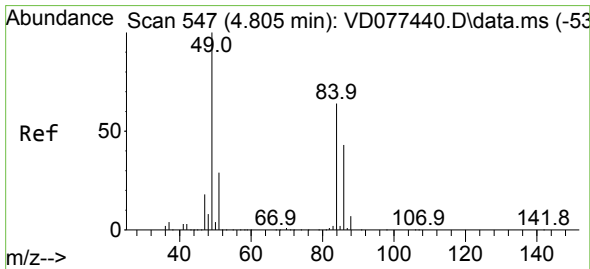
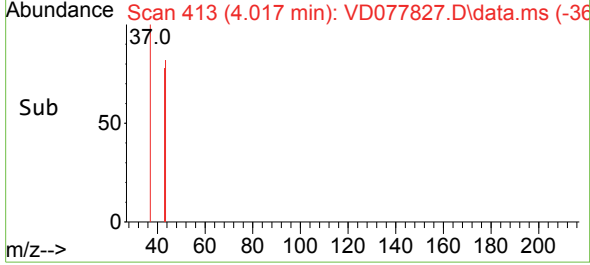
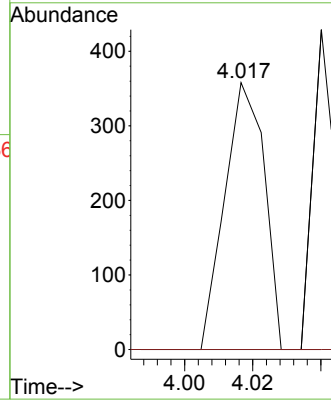
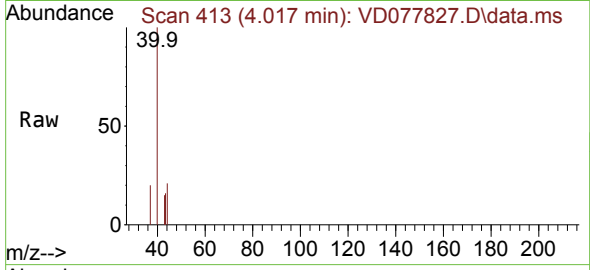




#16
 Acetone
 Concen: Below Cal
 RT: 4.017 min Scan# 414
 Delta R.T. -0.005 min
 Lab File: VD077827.D
 Acq: 11 Dec 2023 22:25

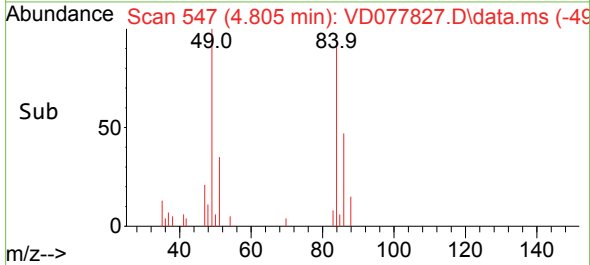
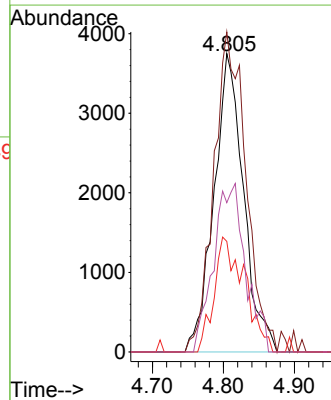
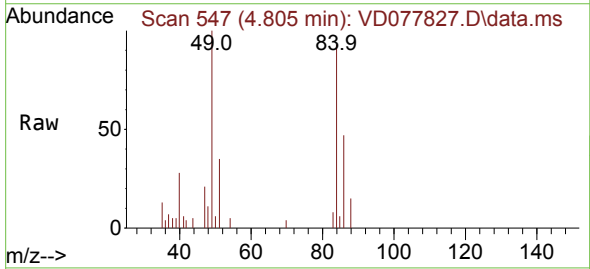
Instrument : MSVOA_D
 ClientSampleId : CHRT-24328

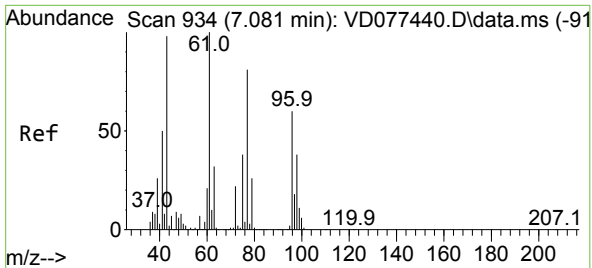
Tgt Ion: 43 Resp: 289
 Ion Ratio Lower Upper
 43 100
 58 0.0 34.7 52.1#



#20
 Methylene Chloride
 Concen: 2.427 ug/l
 RT: 4.805 min Scan# 547
 Delta R.T. -0.000 min
 Lab File: VD077827.D
 Acq: 11 Dec 2023 22:25

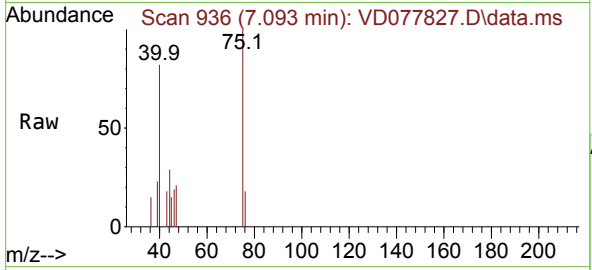
Tgt Ion: 84 Resp: 10827
 Ion Ratio Lower Upper
 84 100
 49 107.2 71.4 107.2#
 51 37.1 24.5 36.7#
 86 50.0 48.7 73.1



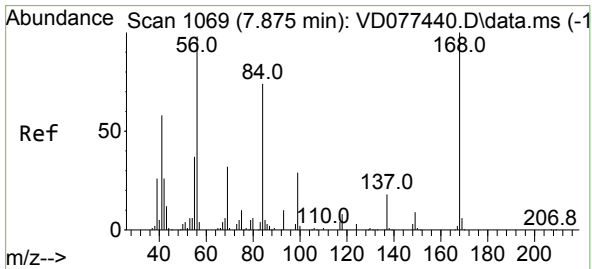
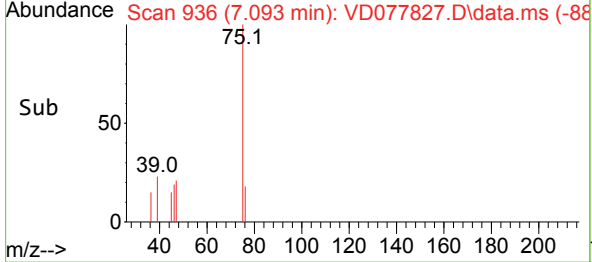
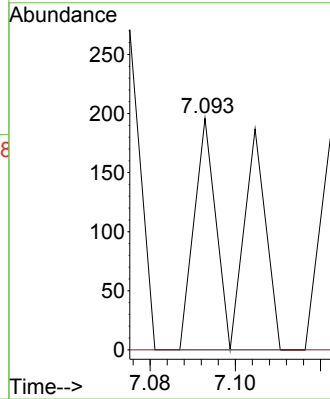


#25
 2-Butanone
 Concen: Below Cal
 RT: 7.093 min Scan# 91
 Delta R.T. 0.012 min
 Lab File: VD077827.D
 Acq: 11 Dec 2023 22:25

Instrument : MSVOA_D
 ClientSampleId : CHRT-24328

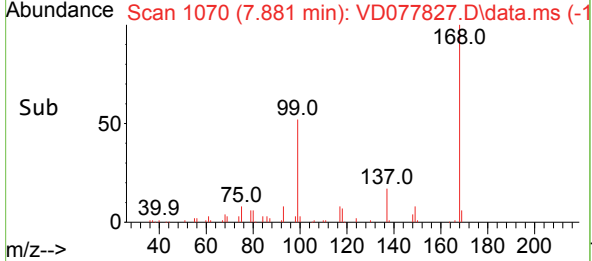
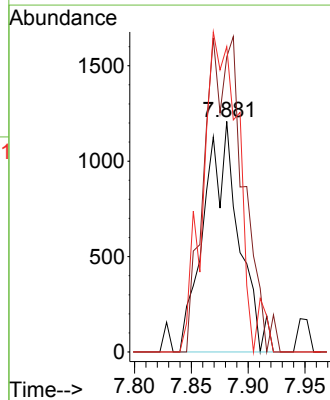
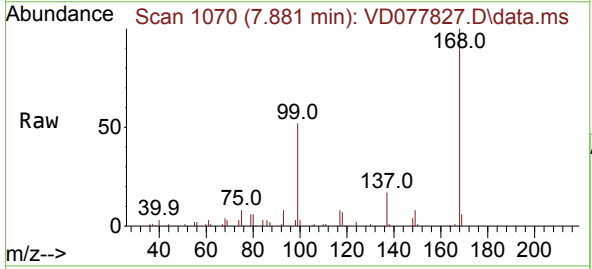


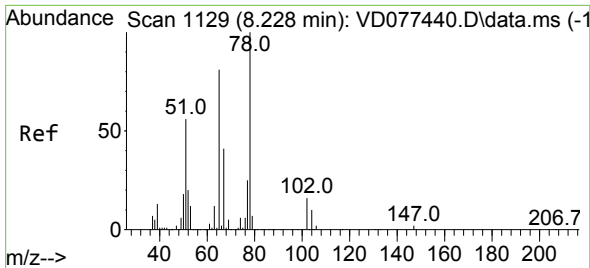
Tgt Ion: 43 Resp: 135
 Ion Ratio Lower Upper
 43 100
 72 0.0 30.7 46.1#



#31
 Cyclohexane
 Concen: 1.109 ug/l
 RT: 7.881 min Scan# 1070
 Delta R.T. 0.006 min
 Lab File: VD077827.D
 Acq: 11 Dec 2023 22:25

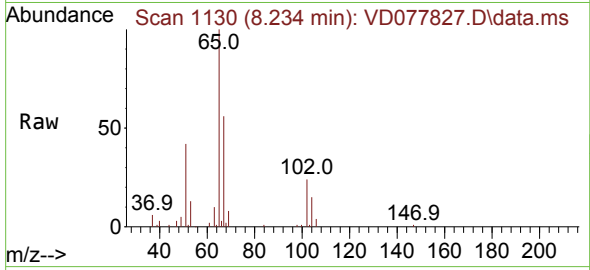
Tgt Ion: 56 Resp: 2563
 Ion Ratio Lower Upper
 56 100
 69 128.0 28.6 43.0#
 84 132.5 84.8 127.2#



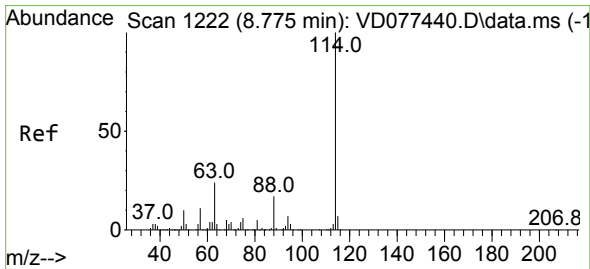
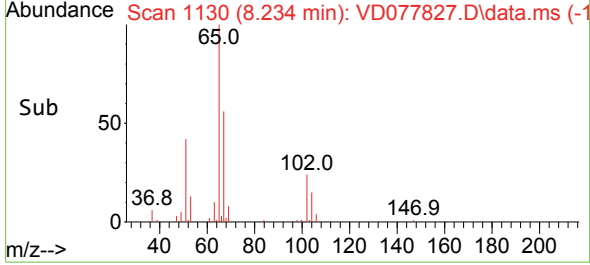
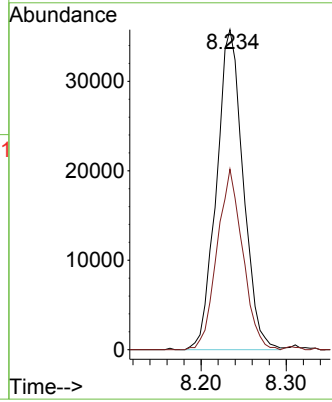


#33
 1,2-Dichloroethane-d4
 Concen: 59.886 ug/l
 RT: 8.234 min Scan# 1129
 Delta R.T. 0.006 min
 Lab File: VD077827.D
 Acq: 11 Dec 2023 22:25

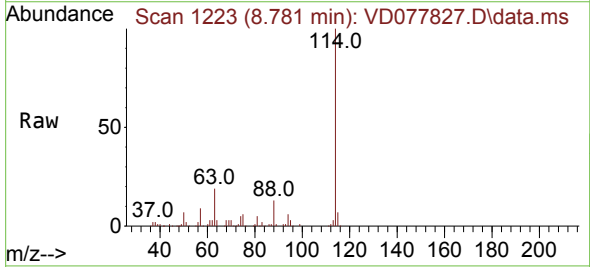
Instrument : MSVOA_D
 ClientSampleId : VD077827.D
 CHRT-24328



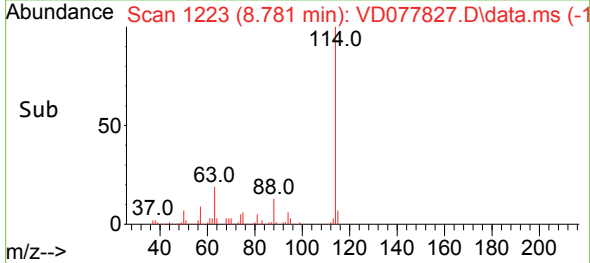
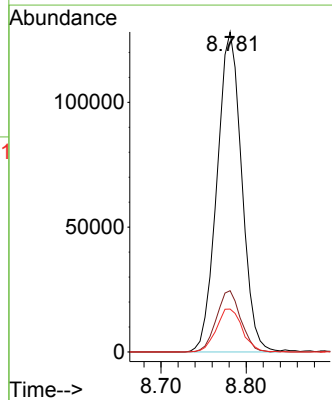
Tgt Ion: 65 Resp: 77811
 Ion Ratio Lower Upper
 65 100
 67 54.4 0.0 115.0

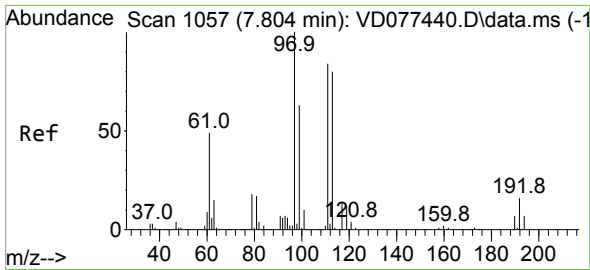


#34
 1,4-Difluorobenzene
 Concen: 50.000 ug/l
 RT: 8.781 min Scan# 1223
 Delta R.T. 0.006 min
 Lab File: VD077827.D
 Acq: 11 Dec 2023 22:25



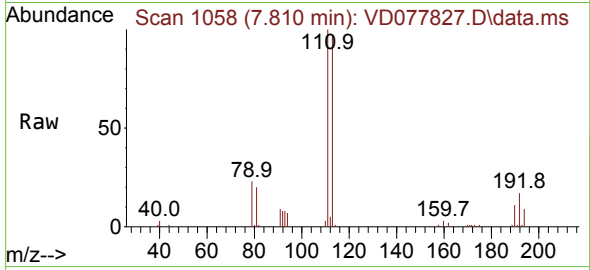
Tgt Ion: 114 Resp: 257766
 Ion Ratio Lower Upper
 114 100
 63 19.2 0.0 33.4
 88 13.4 0.0 26.2



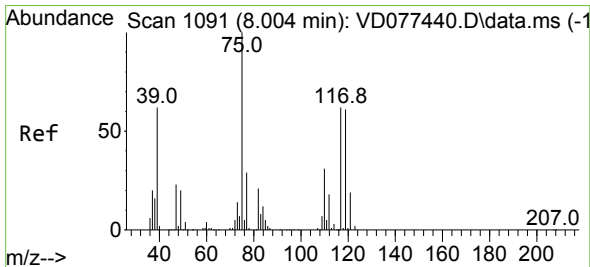
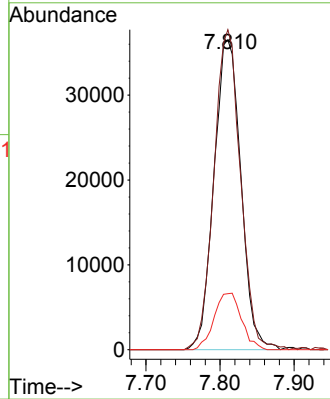
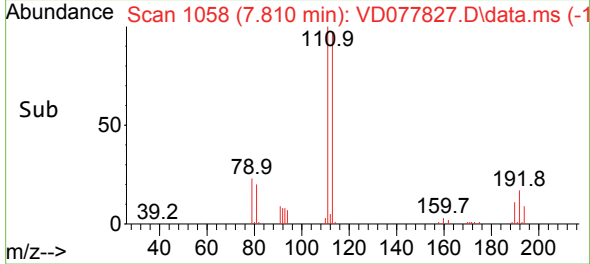


#35
 Dibromofluoromethane
 Concen: 50.997 ug/l
 RT: 7.810 min Scan# 1058
 Delta R.T. 0.006 min
 Lab File: VD077827.D
 Acq: 11 Dec 2023 22:25

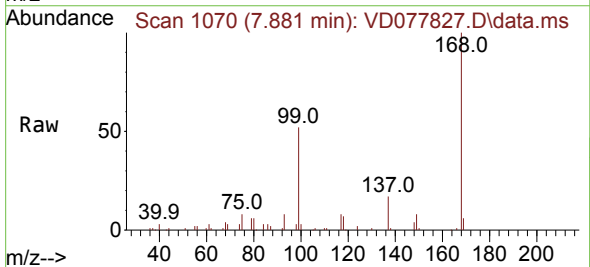
Instrument : MSVOA_D
 ClientSampleId : VD077827.D
 CHT-24328



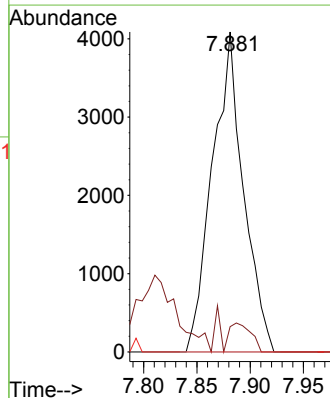
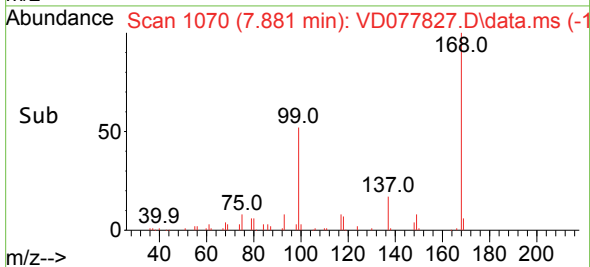
Tgt Ion:113 Resp: 92079
 Ion Ratio Lower Upper
 113 100
 111 101.8 84.7 127.1
 192 18.6 16.8 25.2

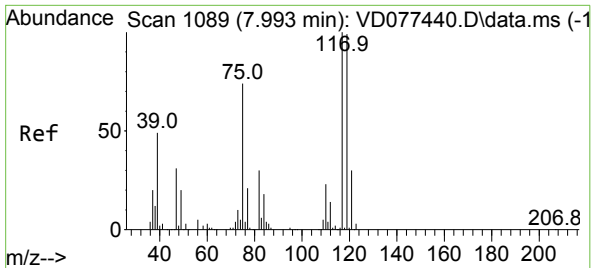


#36
 1,1-Dichloropropene
 Concen: 2.870 ug/l
 RT: 7.881 min Scan# 1070
 Delta R.T. -0.123 min
 Lab File: VD077827.D
 Acq: 11 Dec 2023 22:25



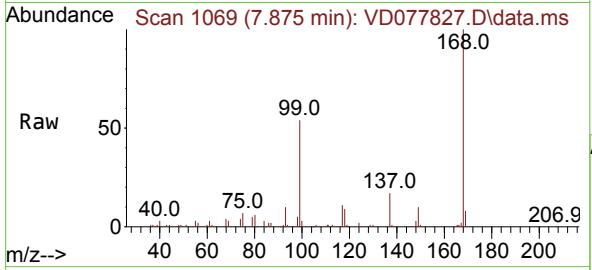
Tgt Ion: 75 Resp: 8289
 Ion Ratio Lower Upper
 75 100
 110 6.4 19.9 59.6#
 77 0.0 24.7 37.1#



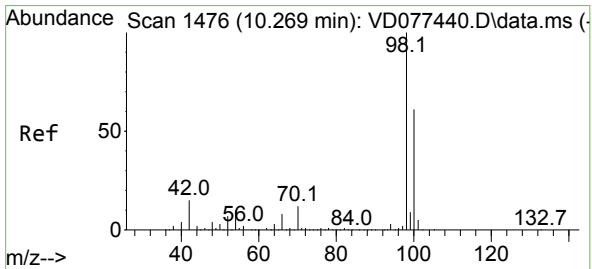
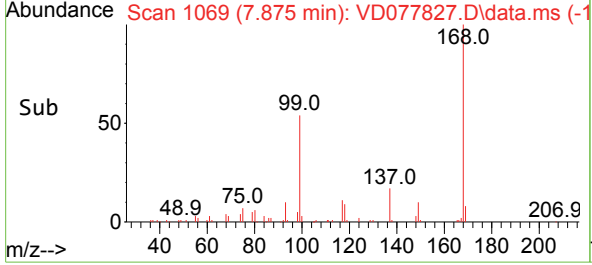
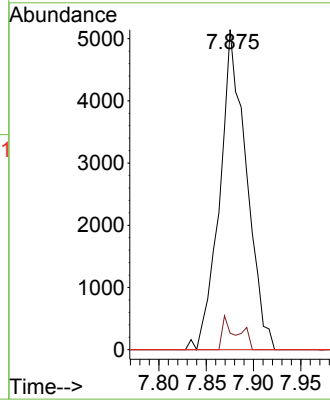


#38
 Carbon Tetrachloride
 Concen: 3.498 ug/l
 RT: 7.875 min Scan# 1089
 Delta R.T. -0.118 min
 Lab File: VD077827.D
 Acq: 11 Dec 2023 22:25

Instrument : MSVOA_D
 ClientSampleId : VD077827.D
 CHRT-24328

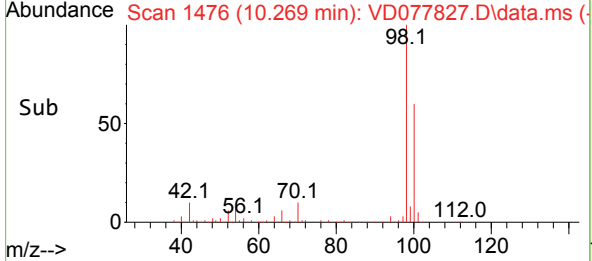
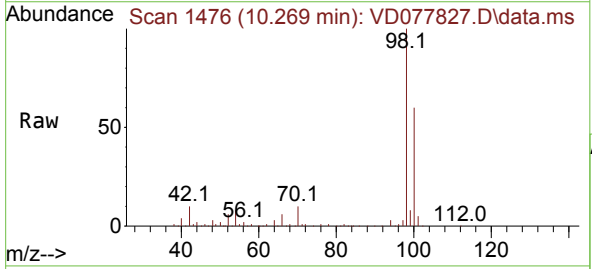
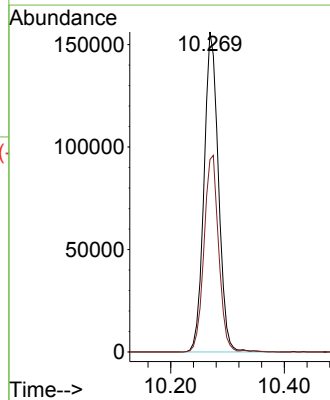


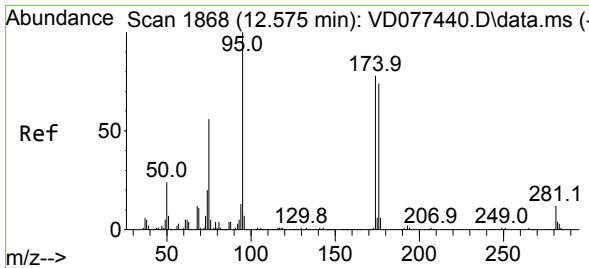
Tgt Ion:117 Resp: 10071
 Ion Ratio Lower Upper
 117 100
 119 5.2 78.0 117.0#
 121 0.0 24.2 36.2#



#50
 Toluene-d8
 Concen: 37.947 ug/l
 RT: 10.269 min Scan# 1476
 Delta R.T. 0.000 min
 Lab File: VD077827.D
 Acq: 11 Dec 2023 22:25

Tgt Ion: 98 Resp: 274417
 Ion Ratio Lower Upper
 98 100
 100 62.2 50.3 75.5

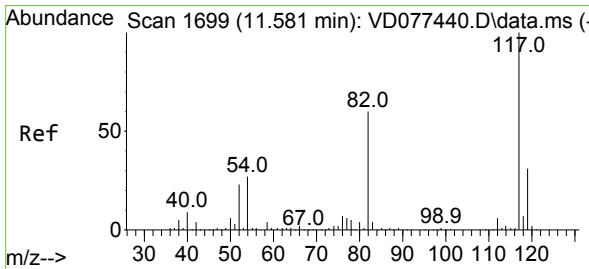
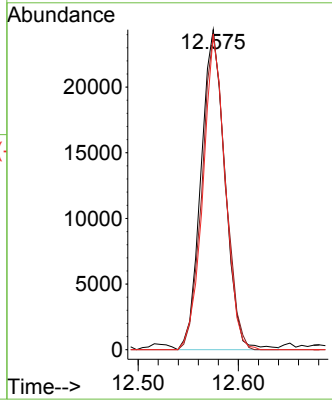
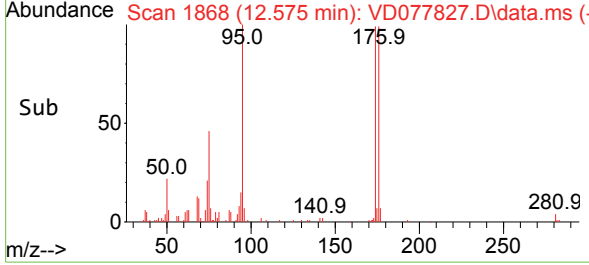
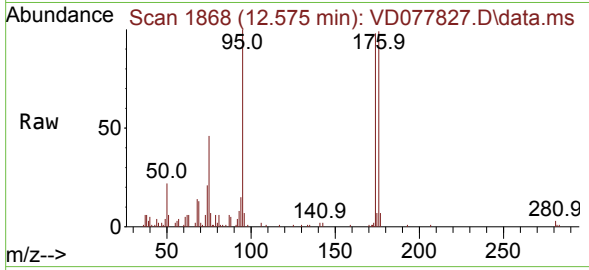




#62
 4-Bromofluorobenzene
 Concen: 18.728 ug/l
 RT: 12.575 min Scan# 1868
 Delta R.T. -0.000 min
 Lab File: VD077827.D
 Acq: 11 Dec 2023 22:25

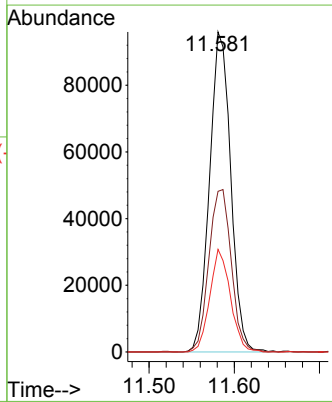
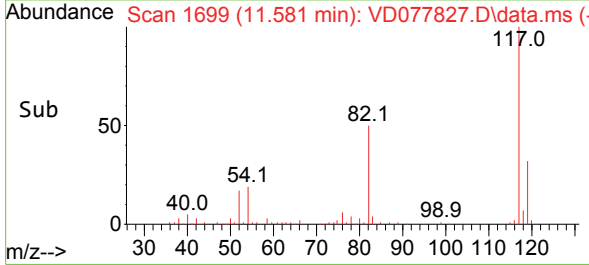
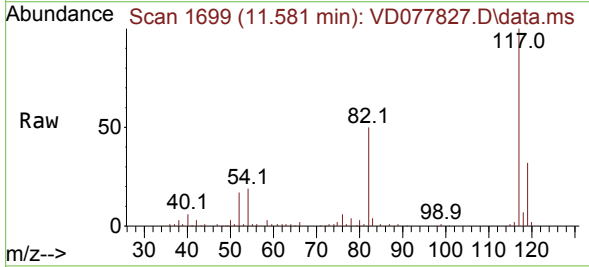
Instrument : MSVOA_D
 ClientSampleId : VD077827.D
 CHRT-24328

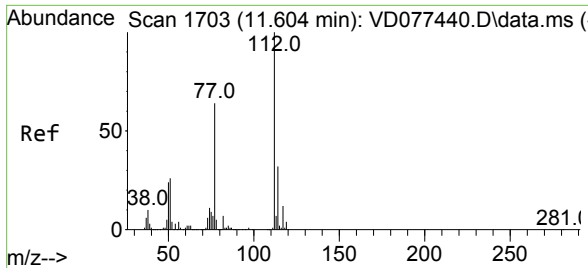
Tgt Ion	Resp	Lower	Upper
95	40491	100	
174	95.4	0.0	201.8
176	91.3	0.0	191.8



#63
 Chlorobenzene-d5
 Concen: 50.000 ug/l
 RT: 11.581 min Scan# 1699
 Delta R.T. -0.000 min
 Lab File: VD077827.D
 Acq: 11 Dec 2023 22:25

Tgt Ion	Resp	Lower	Upper
117	165826	100	
82	50.2	38.3	57.5
119	32.1	25.0	37.4

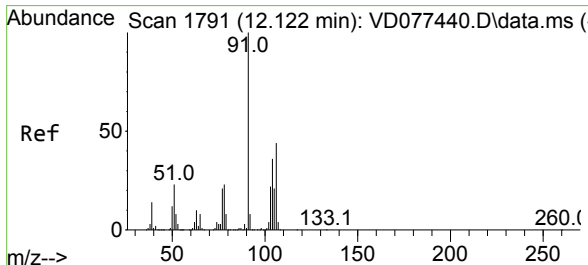
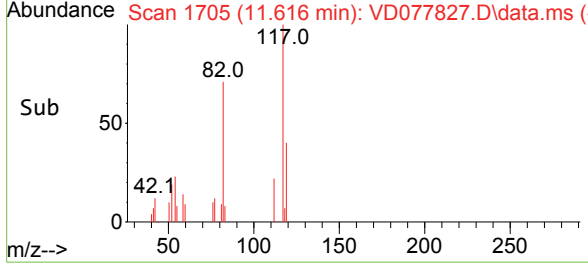
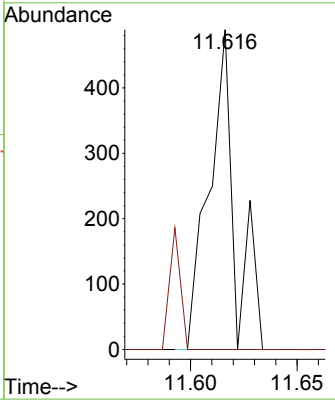
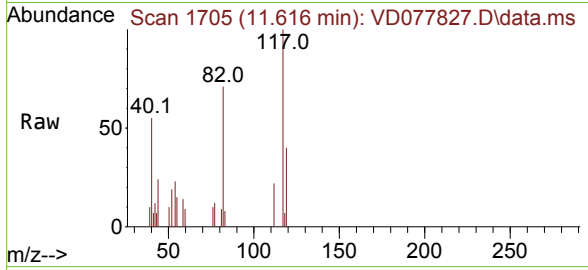




#65
 Chlorobenzene
 Concen: Below Cal
 RT: 11.616 min Scan# 11
 Delta R.T. 0.012 min
 Lab File: VD077827.D
 Acq: 11 Dec 2023 22:25

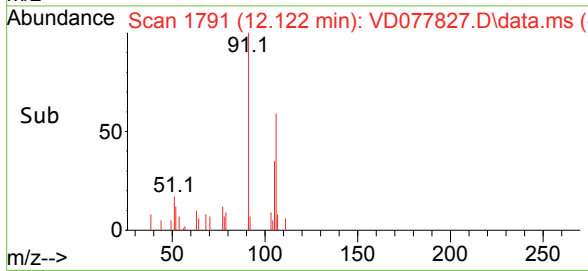
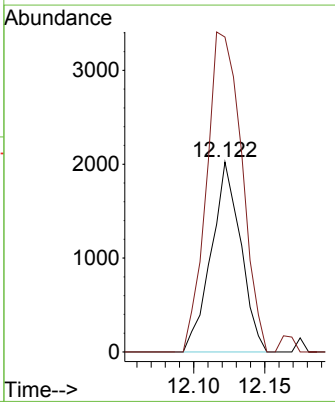
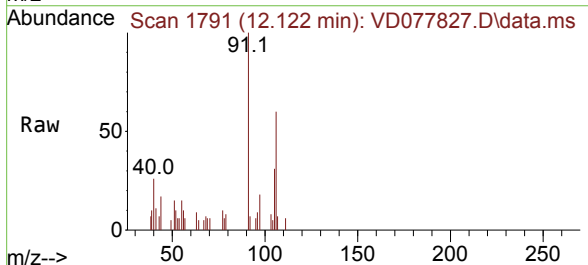
Instrument : MSVOA_D
 ClientSampleId : VD077827.D
 CHRT-24328

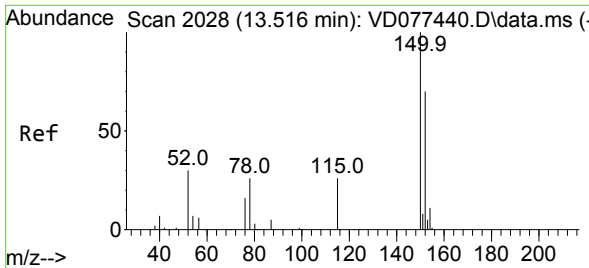
Tgt Ion:112 Resp: 415
 Ion Ratio Lower Upper
 112 100
 114 0.0 25.1 37.7#



#69
 o-Xylene
 Concen: 1.200 ug/l
 RT: 12.122 min Scan# 1791
 Delta R.T. 0.000 min
 Lab File: VD077827.D
 Acq: 11 Dec 2023 22:25

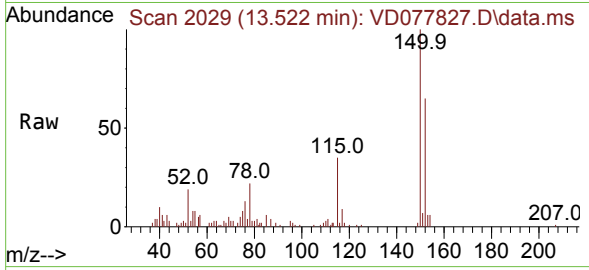
Tgt Ion:106 Resp: 2921
 Ion Ratio Lower Upper
 106 100
 91 200.6 97.9 293.6



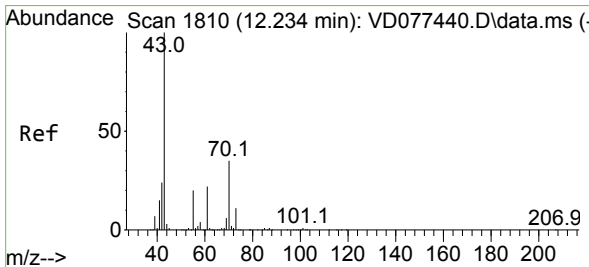
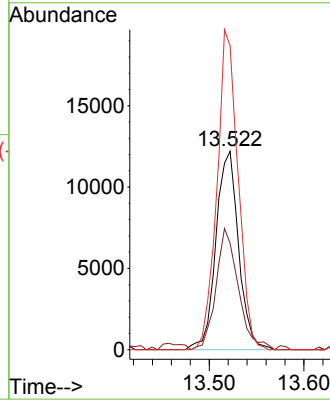
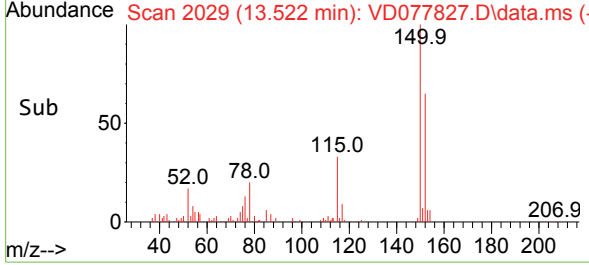


#72
 1,4-Dichlorobenzene-d4
 Concen: 50.000 ug/l
 RT: 13.522 min Scan# 2028
 Delta R.T. 0.006 min
 Lab File: VD077827.D
 Acq: 11 Dec 2023 22:25

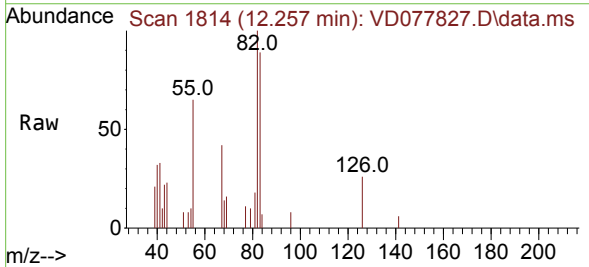
Instrument : MSVOA_D
 ClientSampleId : CHRT-24328



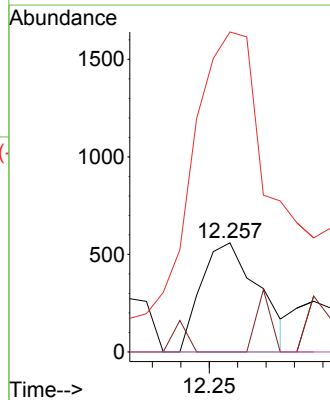
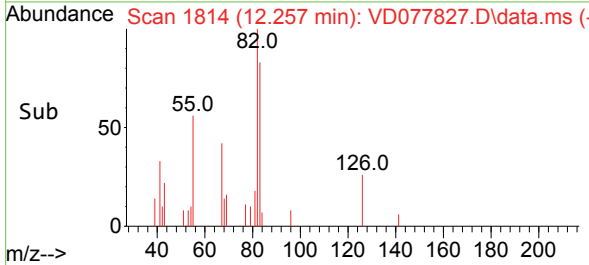
Tgt Ion:152 Resp: 20305
 Ion Ratio Lower Upper
 152 100
 115 60.2 27.1 81.3
 150 150.4 0.0 353.6

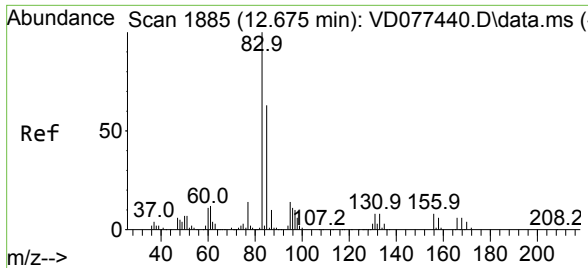


#74
 N-amy1 acetate
 Concen: 2.608 ug/l
 RT: 12.257 min Scan# 1814
 Delta R.T. 0.023 min
 Lab File: VD077827.D
 Acq: 11 Dec 2023 22:25



Tgt Ion: 43 Resp: 789
 Ion Ratio Lower Upper
 43 100
 70 14.3 45.0 67.4#
 55 387.3 23.8 35.6#
 61 0.0 22.1 33.1#

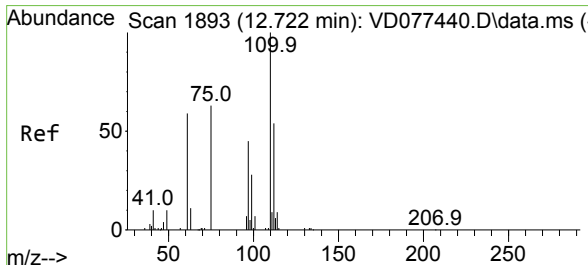
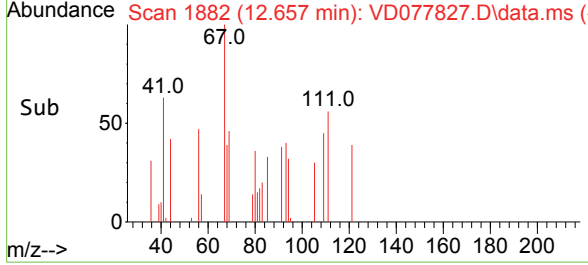
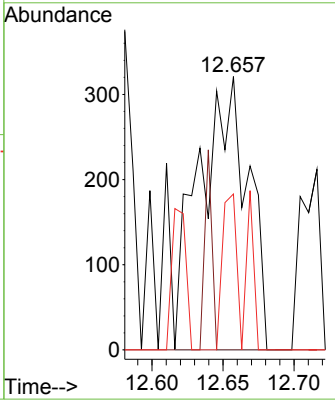
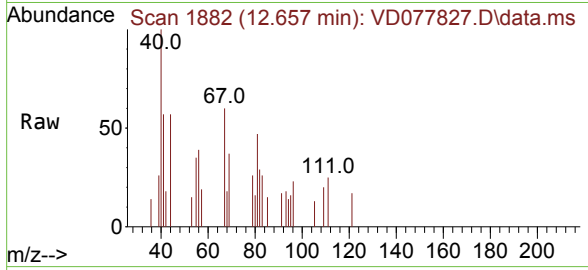




#75
 1,1,2,2-Tetrachloroethane
 Concen: 2.866 ug/l
 RT: 12.657 min Scan# 1882
 Delta R.T. -0.018 min
 Lab File: VD077827.D
 Acq: 11 Dec 2023 22:25

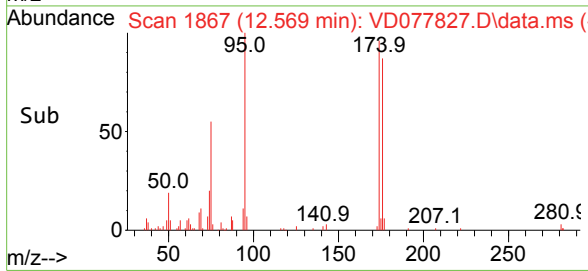
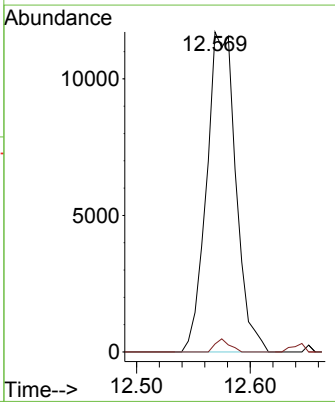
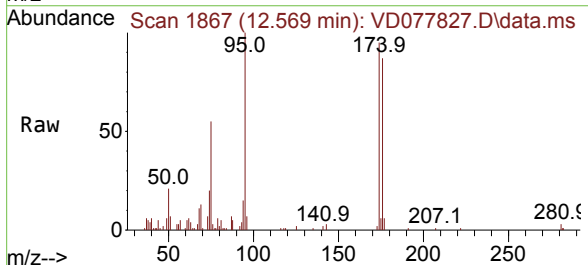
Instrument : MSVOA_D
 ClientSampleId : VD077827.D
 CHRT-24328

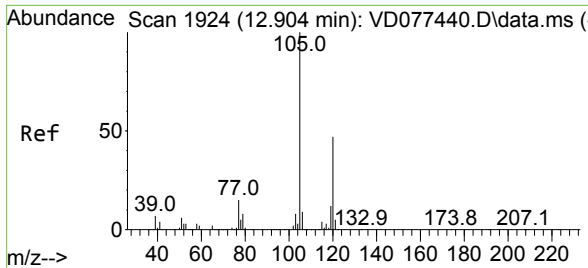
Tgt Ion	Resp	Lower	Upper
83	100		
131	0.0	5.1	15.3#
85	25.0	32.6	97.8#



#76
 1,2,3-Trichloropropane
 Concen: 118.855 ug/l
 RT: 12.569 min Scan# 1867
 Delta R.T. -0.153 min
 Lab File: VD077827.D
 Acq: 11 Dec 2023 22:25

Tgt Ion	Resp	Lower	Upper
75	100		
77	2.0	0.0	0.0#

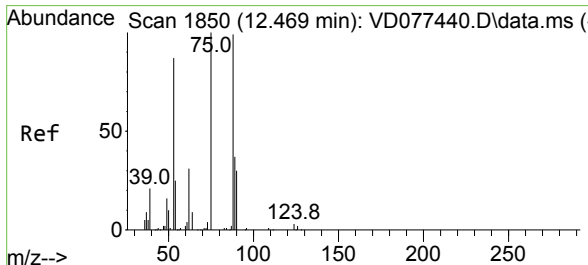
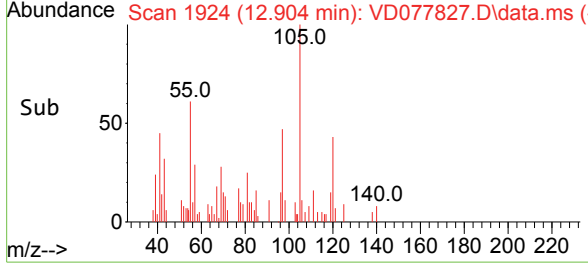
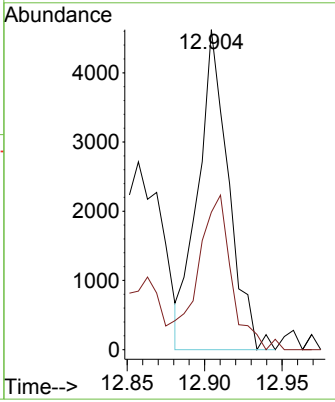
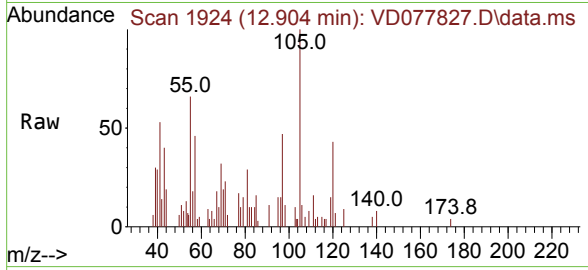




#80
 1,3,5-Trimethylbenzene
 Concen: 4.943 ug/l
 RT: 12.904 min Scan# 1924
 Delta R.T. 0.000 min
 Lab File: VD077827.D
 Acq: 11 Dec 2023 22:25

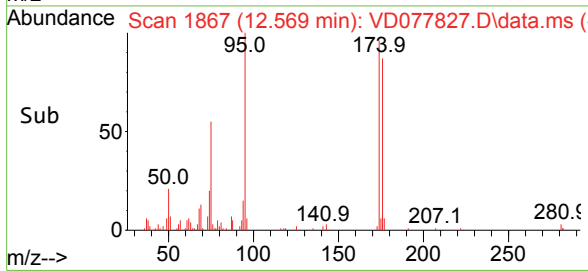
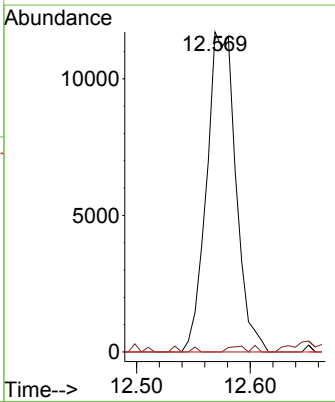
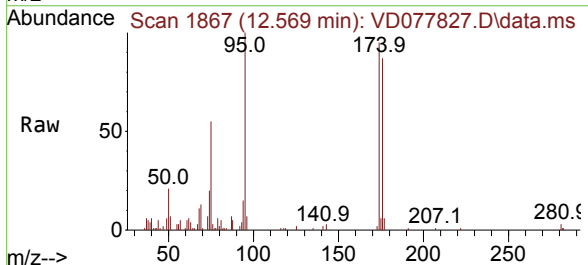
Instrument : MSVOA_D
 ClientSampleId : VD077827.D
 CHRT-24328

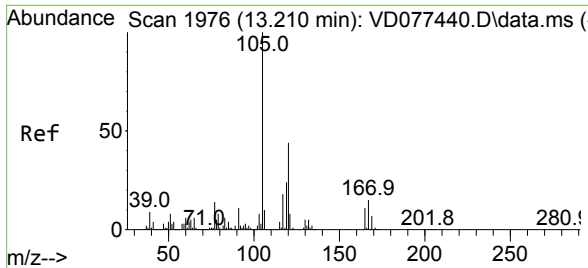
Tgt Ion: 105 Resp: 6345
 Ion Ratio Lower Upper
 105 100
 120 51.8 26.4 79.2



#81
 trans-1,4-Dichloro-2-butene
 Concen: 240.808 ug/l
 RT: 12.569 min Scan# 1867
 Delta R.T. 0.100 min
 Lab File: VD077827.D
 Acq: 11 Dec 2023 22:25

Tgt Ion: 75 Resp: 20960
 Ion Ratio Lower Upper
 75 100
 53 0.3 63.0 94.4#
 89 0.0 37.9 56.9#

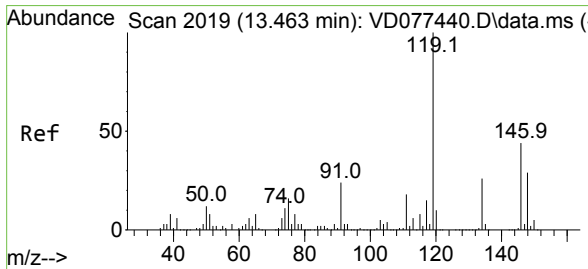
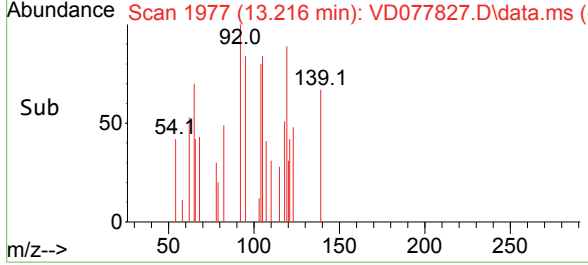
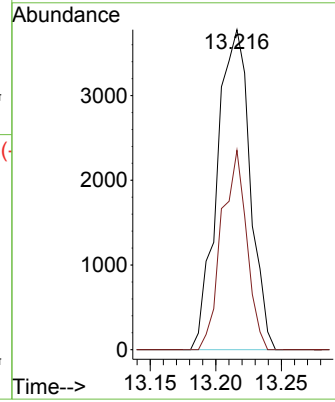
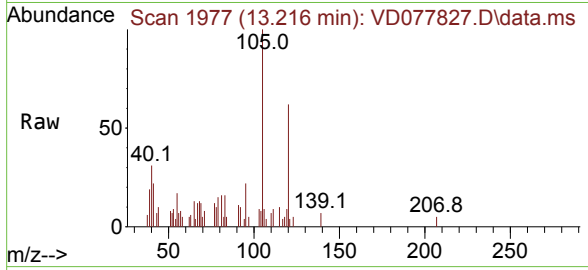




#84
 1,2,4-Trimethylbenzene
 Concen: 5.140 ug/l
 RT: 13.216 min Scan# 1977
 Delta R.T. 0.006 min
 Lab File: VD077827.D
 Acq: 11 Dec 2023 22:25

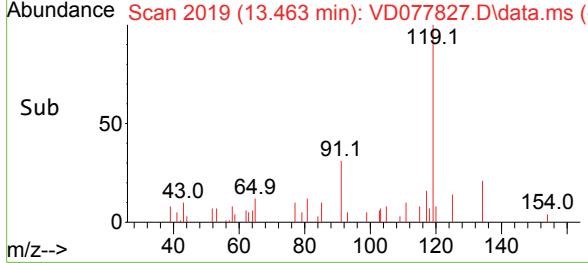
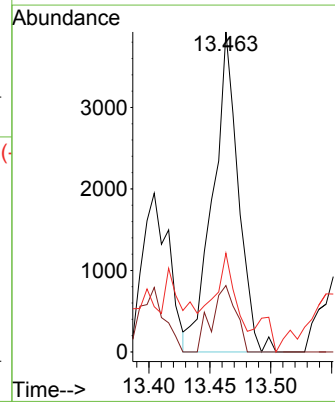
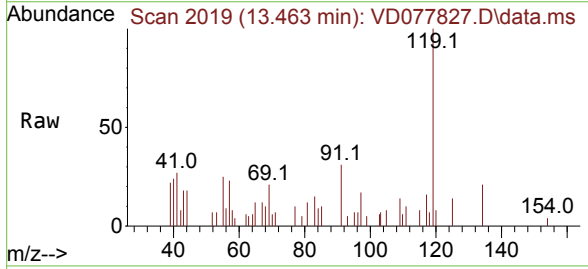
Instrument : MSVOA_D
 ClientSampleId : CHRT-24328

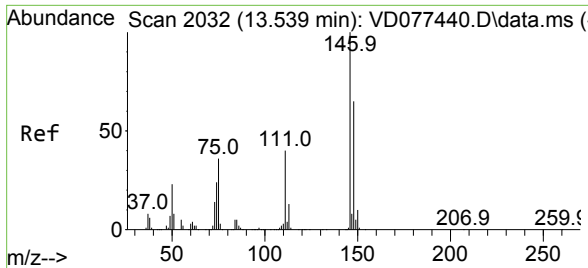
Tgt Ion:105 Resp: 6599
 Ion Ratio Lower Upper
 105 100
 120 47.5 24.3 72.9



#86
 p-Isopropyltoluene
 Concen: 3.952 ug/l
 RT: 13.463 min Scan# 2019
 Delta R.T. 0.000 min
 Lab File: VD077827.D
 Acq: 11 Dec 2023 22:25

Tgt Ion:119 Resp: 5667
 Ion Ratio Lower Upper
 119 100
 134 19.9 14.2 42.6
 91 18.5 10.5 31.5

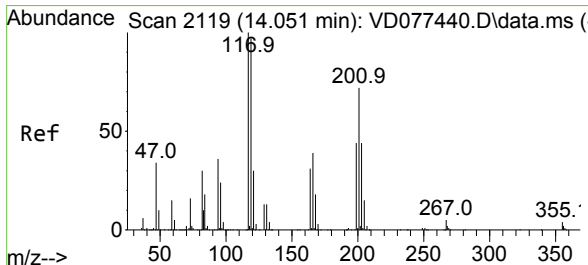
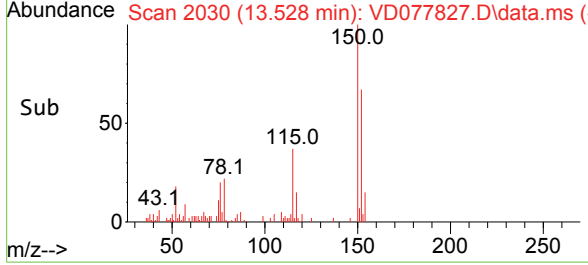
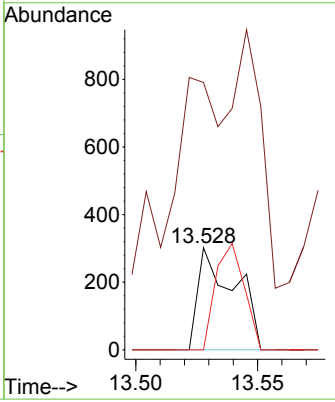
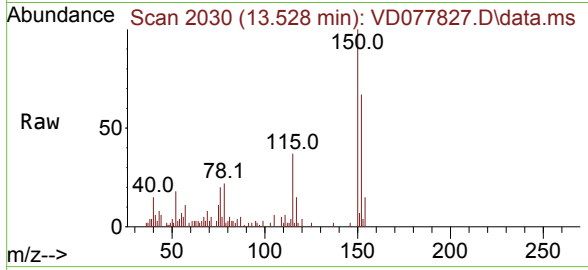




#88
 1,4-Dichlorobenzene
 Concen: Below Cal
 RT: 13.528 min Scan# 2030
 Delta R.T. -0.011 min
 Lab File: VD077827.D
 Acq: 11 Dec 2023 22:25

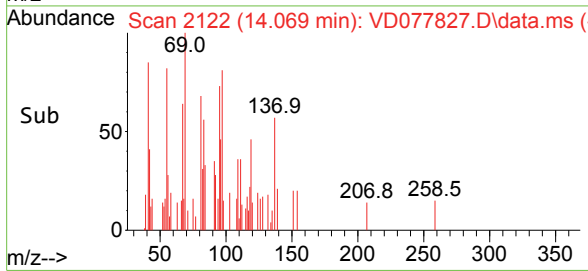
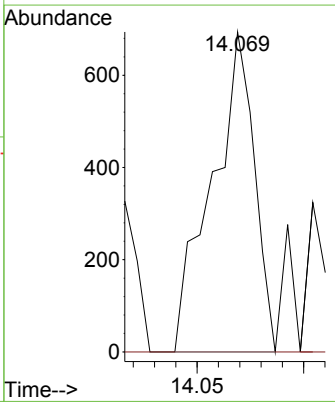
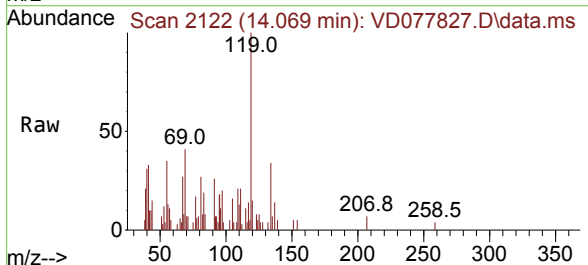
Instrument : MSVOA_D
 ClientSampleId : CHRT-24328

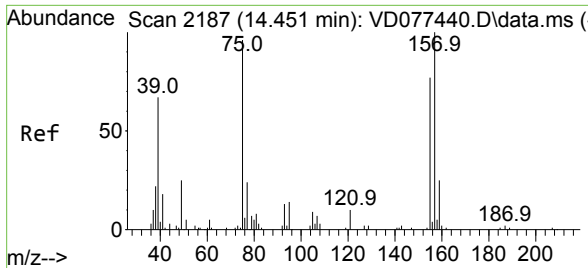
Tgt Ion	Resp	Lower	Upper
146	100		
111	439.4	17.4	52.3#
148	81.3	31.7	95.1



#90
 Hexachloroethane
 Concen: 3.632 ug/l
 RT: 14.069 min Scan# 2122
 Delta R.T. 0.018 min
 Lab File: VD077827.D
 Acq: 11 Dec 2023 22:25

Tgt Ion	Resp	Lower	Upper
117	100		
201	0.0	38.5	115.5#

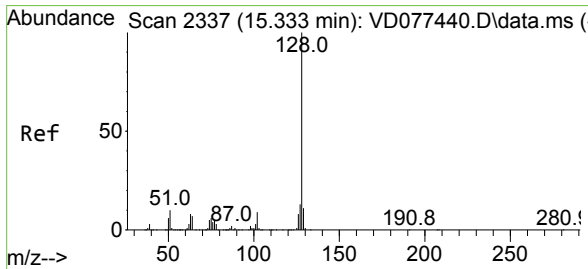
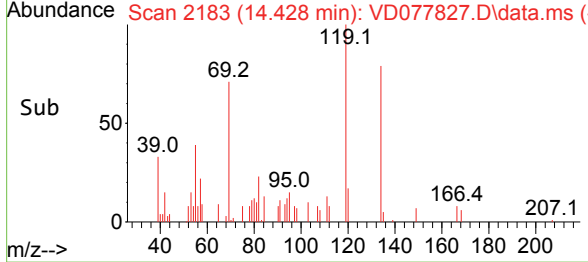
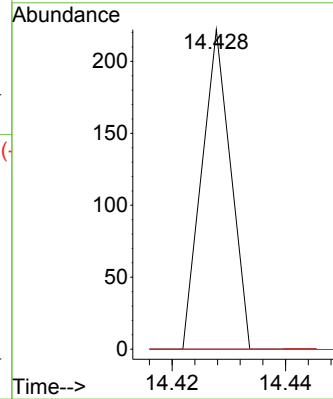
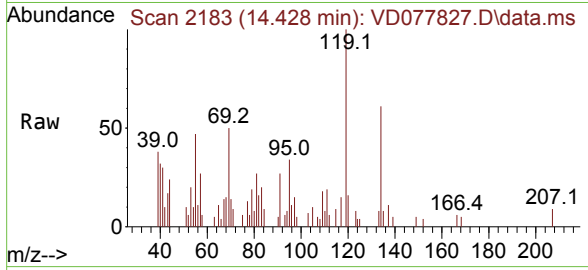




#92
 1,2-Dibromo-3-Chloropropane
 Concen: 1.047 ug/l
 RT: 14.428 min Scan# 2183
 Delta R.T. -0.023 min
 Lab File: VD077827.D
 Acq: 11 Dec 2023 22:25

Instrument : MSVOA_D
 ClientSampleId : VD077827.D
 CHRT-24328

Tgt Ion	Resp	Lower	Upper
75	100		
155	0.0	47.9	143.8#
157	0.0	59.9	179.7#



#95
 Naphthalene
 Concen: 1.713 ug/l
 RT: 15.345 min Scan# 2339
 Delta R.T. 0.012 min
 Lab File: VD077827.D
 Acq: 11 Dec 2023 22:25

Tgt Ion	Resp	Lower	Upper
128	100		
127	0.0	10.5	15.7#
129	27.1	8.7	13.1#

