

Data Path : Z:\voasrv\HPCHEM1\MSVOA\_D\Data\VD121421\  
 Data File : VD071316.D  
 Acq On : 14 Dec 2021 13:07  
 Operator : VA/SY  
 Sample : M5022-49  
 Misc : 5.04G/5.00ml/MSVOA\_D/SOIL  
 ALS Vial : 1 Sample Multiplier: 1

Instrument :  
 MSVOA\_D  
 ClientSampleId :  
 TP14

Integration Parameters: RTEINT.P

Integrator: RTE  
 Smoothing : ON Filtering: 5  
 Sampling : 1 Min Area: 3 % of largest Peak  
 Start Thrs: 0.2 Max Peaks: 100  
 Stop Thrs : 0 Peak Location: TOP

If leading or trailing edge < 100 prefer < Baseline drop else tangent >  
 Peak separation: 5

Method : Z:\voasrv\HPCHEM1\MSVOA\_D\Method\82D112921S.M  
 Title : SW846 8260

Signal : TIC: VD071316.D\data.ms

peak #	R.T. min	first scan	max scan	last scan	PK TY	peak height	corr. area	corr. % max.	% of total
1	4.962	506	517	528	rBV5	28441	97283	4.77%	0.831%
2	5.179	542	554	565	rBV2	25927	96791	4.74%	0.827%
3	7.191	887	896	907	rVB	46283	128048	6.28%	1.094%
4	7.914	1008	1019	1024	rBV	241991	590889	28.97%	5.048%
5	7.979	1024	1030	1040	rVB	450267	981639	48.12%	8.386%
6	8.326	1075	1089	1099	rBV	221028	502704	24.64%	4.295%
7	8.861	1171	1180	1191	rBV	669961	1347460	66.05%	11.511%
8	10.332	1421	1430	1440	rBV	1069990	1966923	96.42%	16.803%
9	10.720	1489	1496	1501	rBV2	21967	39078	1.92%	0.334%
10	11.079	1551	1557	1563	rBV	72628	113755	5.58%	0.972%
11	11.450	1616	1620	1629	rVB4	21368	37550	1.84%	0.321%
12	11.638	1644	1652	1664	rBV	1163002	2009293	98.50%	17.165%
13	12.620	1812	1819	1828	rBV	1016963	1695308	83.10%	14.483%
14	12.944	1869	1874	1881	rVB5	16823	26740	1.31%	0.228%
15	13.561	1972	1979	1988	rBV	1251871	2039972	100.00%	17.427%
16	14.085	2063	2068	2074	rVB2	18519	32280	1.58%	0.276%

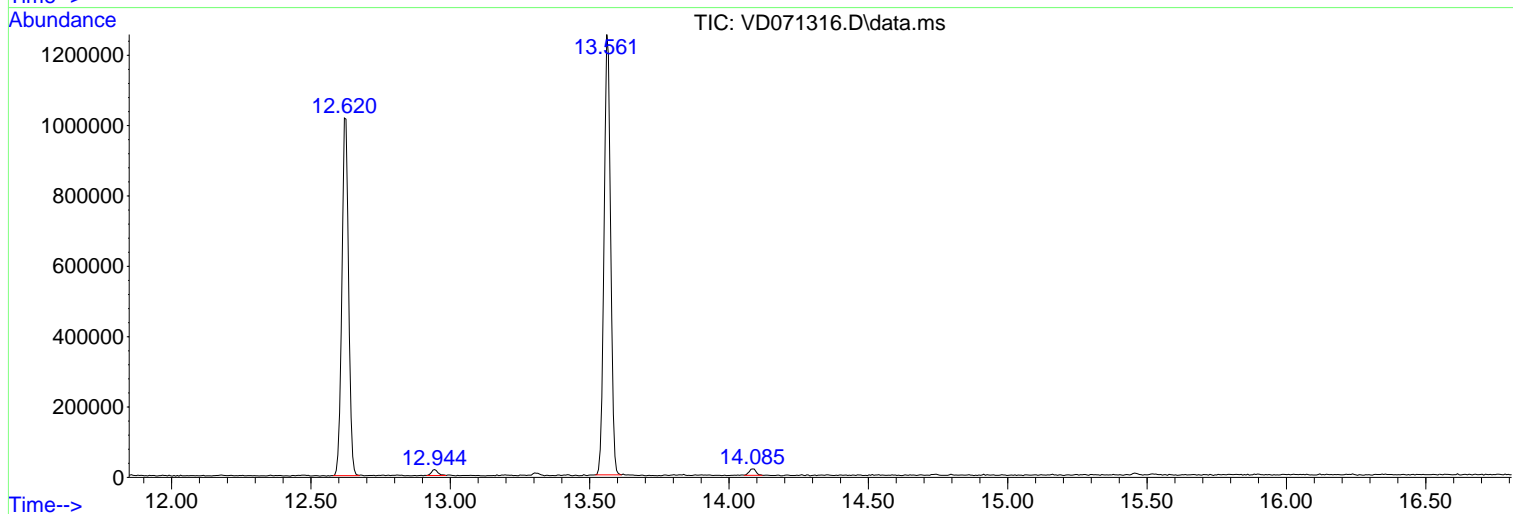
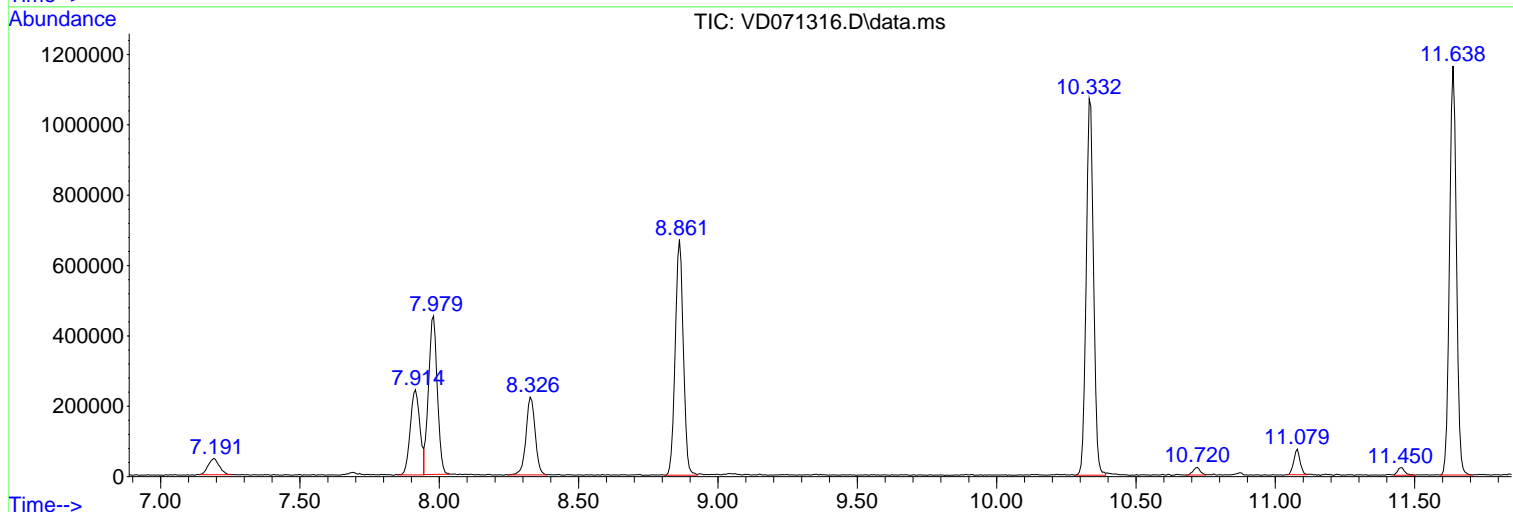
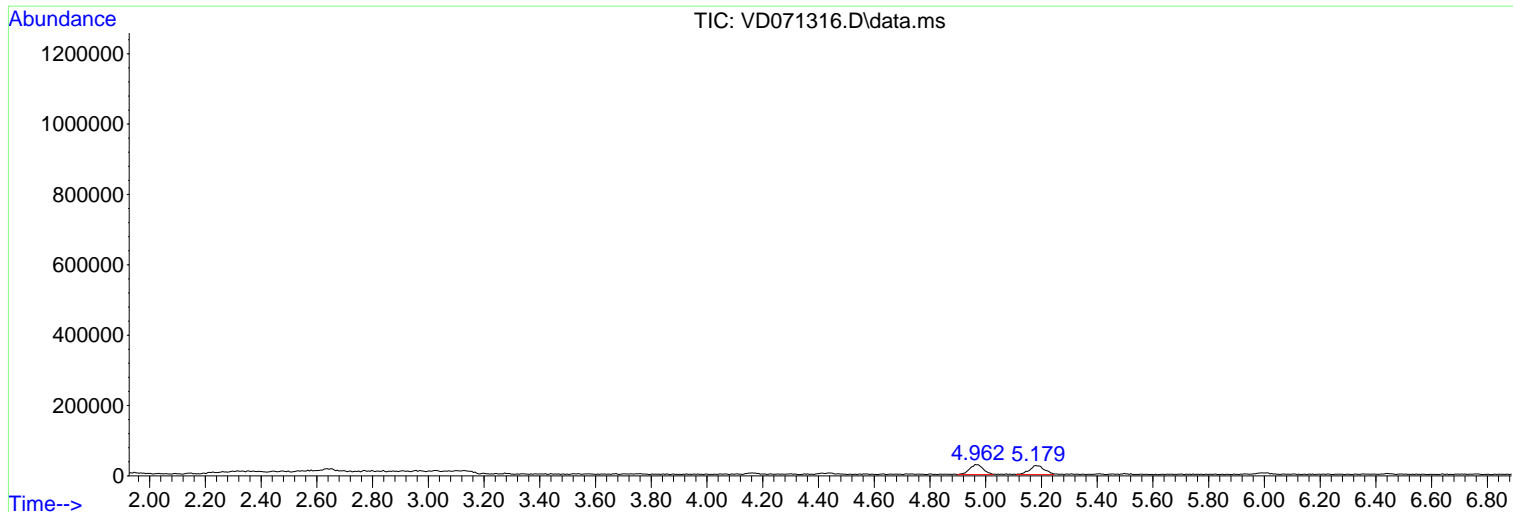
Sum of corrected areas: 11705713

Data Path : Z:\voasrv\HPCHEM1\MSVOA\_D\Data\VD121421\  
 Data File : VD071316.D  
 Acq On : 14 Dec 2021 13:07  
 Operator : VA/SY  
 Sample : M5022-49  
 Misc : 5.04G/5.00ml/MSVOA\_D/SOIL  
 ALS Vial : 1 Sample Multiplier: 1

Instrument :  
 MSVOA\_D  
 ClientSampleId :  
 TP14

Quant Method : Z:\voasrv\HPCHEM1\MSVOA\_D\Method\82D112921S.M  
 Quant Title : SW846 8260

TIC Library : C:\Database\NIST0.L  
 TIC Integration Parameters: LSCINT.P



Data Path : Z:\voasrv\HPCHEM1\MSVOA\_D\Data\VD121421\  
 Data File : VD071316.D  
 Acq On : 14 Dec 2021 13:07  
 Operator : VA/SY  
 Sample : M5022-49  
 Misc : 5.04G/5.00ml/MSVOA\_D/SOIL  
 ALS Vial : 1 Sample Multiplier: 1

Instrument :  
 MSVOA\_D  
 ClientSampleId :  
 TP14

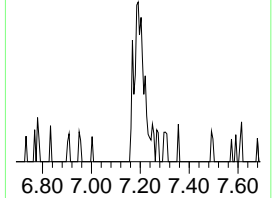
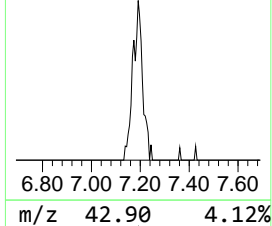
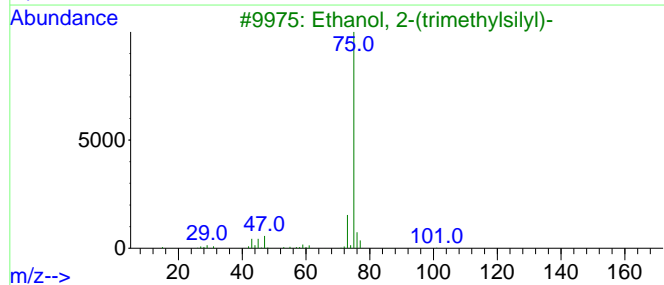
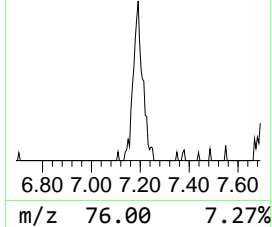
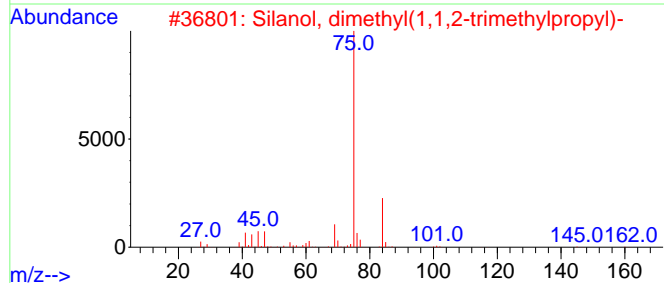
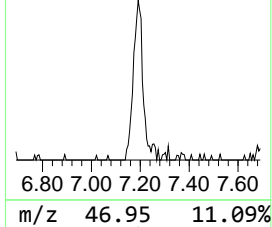
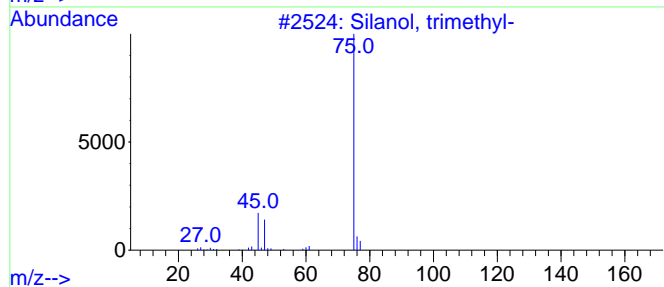
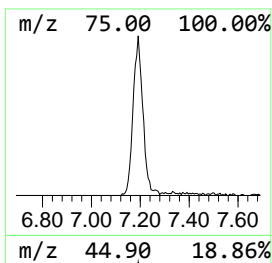
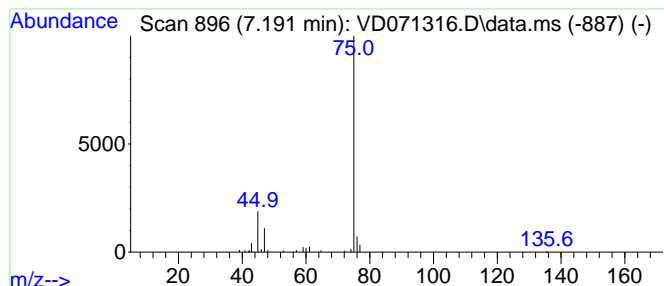
Quant Method : Z:\voasrv\HPCHEM1\MSVOA\_D\Method\82D112921S.M  
 Quant Title : SW846 8260

TIC Library : C:\Database\NIST20.L  
 TIC Integration Parameters: LSCINT.P

\*\*\*\*\*  
 Peak Number 1 Silanol, trimethyl- Concentration Rank 1

R.T.	EstConc	Area	Relative to ISTD	R.T.
7.191	6.52 ug/l	128048	Pentafluorobenzene	7.973

Hit#	of	5	Tentative ID	MW	MolForm	CAS#	Qual
1			Silanol, trimethyl-	90	C3H10OSi	001066-40-6	78
2			Silanol, dimethyl(1,1,2-trimethyl...)	160	C8H20OSi	055644-10-5	64
3			Ethanol, 2-(trimethylsilyl)-	118	C5H14OSi	002916-68-9	56
4			Acetic acid, TMS derivative	132	C5H12O2Si	002754-27-0	47
5			Propanoic acid, TMS derivative	146	C6H14O2Si	016844-98-7	43



Data Path : Z:\voasrv\HPCHEM1\MSVOA\_D\Data\VD121421\  
Data File : VD071316.D  
Acq On : 14 Dec 2021 13:07  
Operator : VA/SY  
Sample : M5022-49  
Misc : 5.04G/5.00ml/MSVOA\_D/SOIL  
ALS Vial : 1 Sample Multiplier: 1

Instrument :  
MSVOA\_D  
ClientSampleId :  
TP14

Quant Method : Z:\voasrv\HPCHEM1\MSVOA\_D\Method\82D112921S.M  
Quant Title : SW846 8260

TIC Library : C:\Database\NIST0.L  
TIC Integration Parameters: LSCINT.P

TIC Top Hit name	RT	EstConc	Units	Response	--Internal Standard--			
					#	RT	Resp	Conc
-----	-----	-----	-----	-----	-----	-----	-----	-----
Silanol, trimet...	7.191	6.5	ug/l	128048	1	7.973	981639	50.0